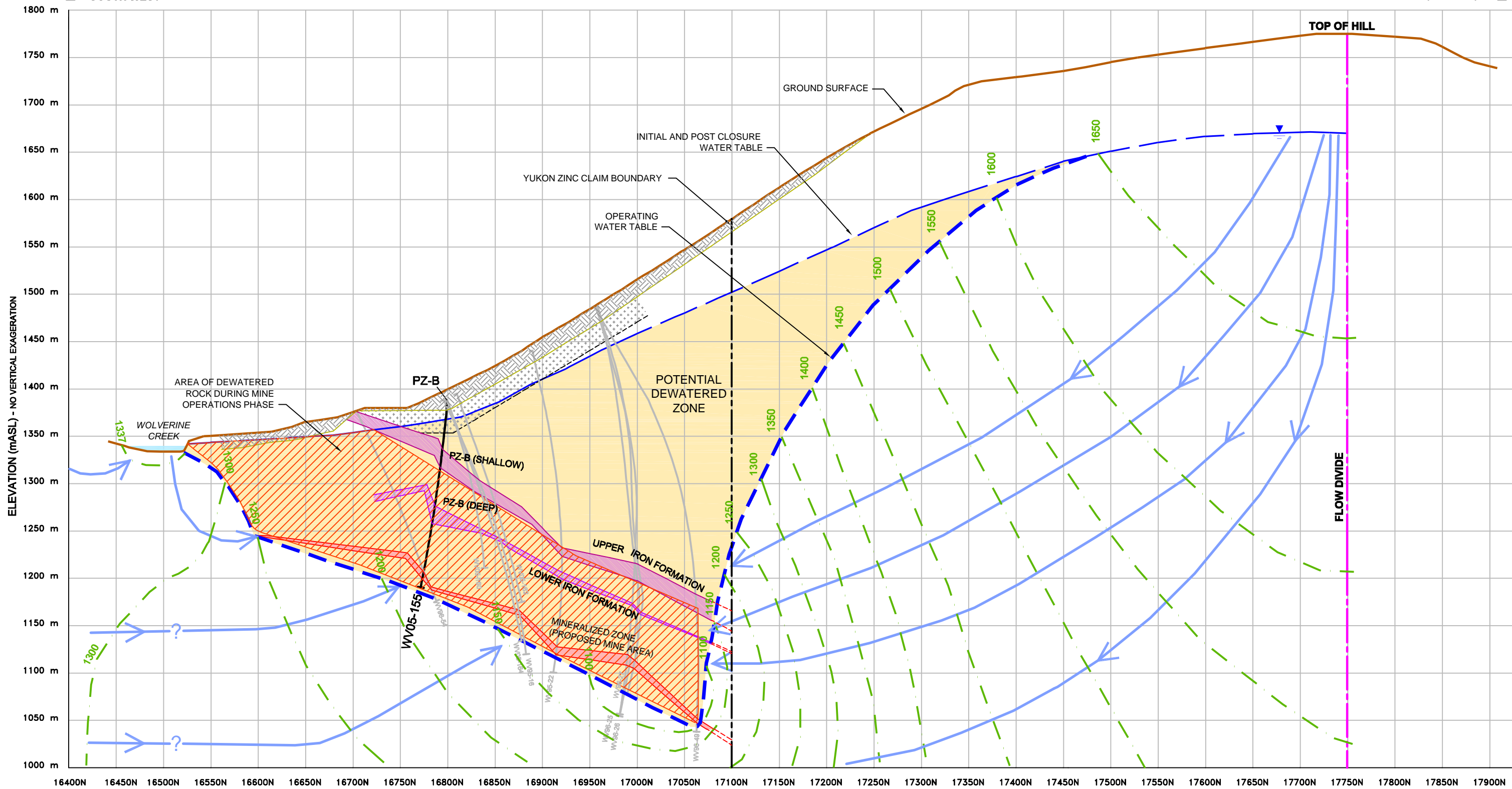


B SOUTH WEST

NORTH EAST B'



SECTION 16825 B-B' Looking Northwest - Scale: 1:4,000 (No vertical exaggeration)

LEGEND:

- OVERBURDEN
- SHALLOW WEATHERED BEDROCK
- MINE DEWATERED ZONE
- UPPER IRON FORMATION
- LOWER IRON FORMATION
- MINERALIZED ZONE
- GROUND WATER FLOW DIVIDE
- INFERRED GROUNDWATER EQUIPOTENTIAL LINE
- INFERRED GROUNDWATER FLOW DIRECTION
- INFERRED POTENTIALLY DEWATERED ZONE
- INFERRED WATER TABLE DURING MINE OPERATION
- WATER TABLE - SUMMER 2005
- PZ-A PIEZOMETER INSTALLED BY GARTNER LEE IN APRIL 2005
- PZ-B POINT OF GROUNDWATER ELEVATION MEASUREMENT
- K = HYDRAULIC CONDUCTIVITY (cm/s)
- EXPLORATION DIAMOND DRILL HOLE DRILLED BY OTHERS

REVIEWED BY: DJ/RF/RM
 PREPARED BY: PW/CCL
 DATE ISSUED: JANUARY, 2006
 PROJECT NUMBER: 50-288
 FILE NAME:
 50288_B6_06aJan31_05r3.dwg
 REVISION: 3

File Name: 50288_B6_06aJan31_05r3.dwg	Date: JANUARY, 2006
Notes:	
1. Hydrostratigraphic layers to be used for interpretation purposes only. Thickness and extent may vary significantly between boreholes.	
2. Inferred groundwater equipotential and flow directions based on limited data and analytical equations.	
Data Sources: Base Cross Sections Provided by Yukon Zinc Corporation	

Projection: N/A

Gartner Lee

Yukon Zinc
CORPORATION

Wolverine Project

Figure 6.4-9
CONCEPTUAL HYDROGEOLOGIC MODEL
CROSS SECTION B-B' (Operating)

Path: C:\GILL\Yukon Zinc\Rush Edits\ Plotted on: Feb 15, 2006-12:30pm Edited by: Charone Concepts Ltd