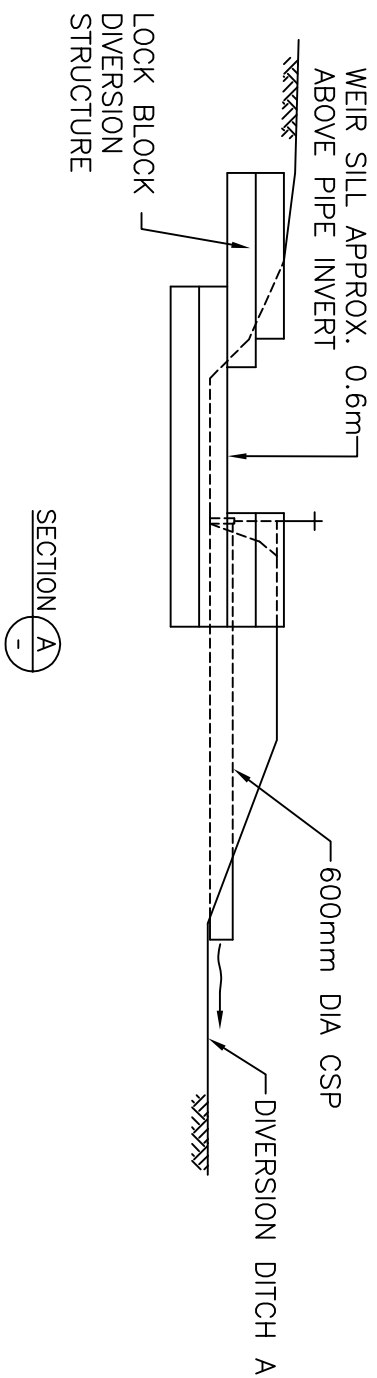


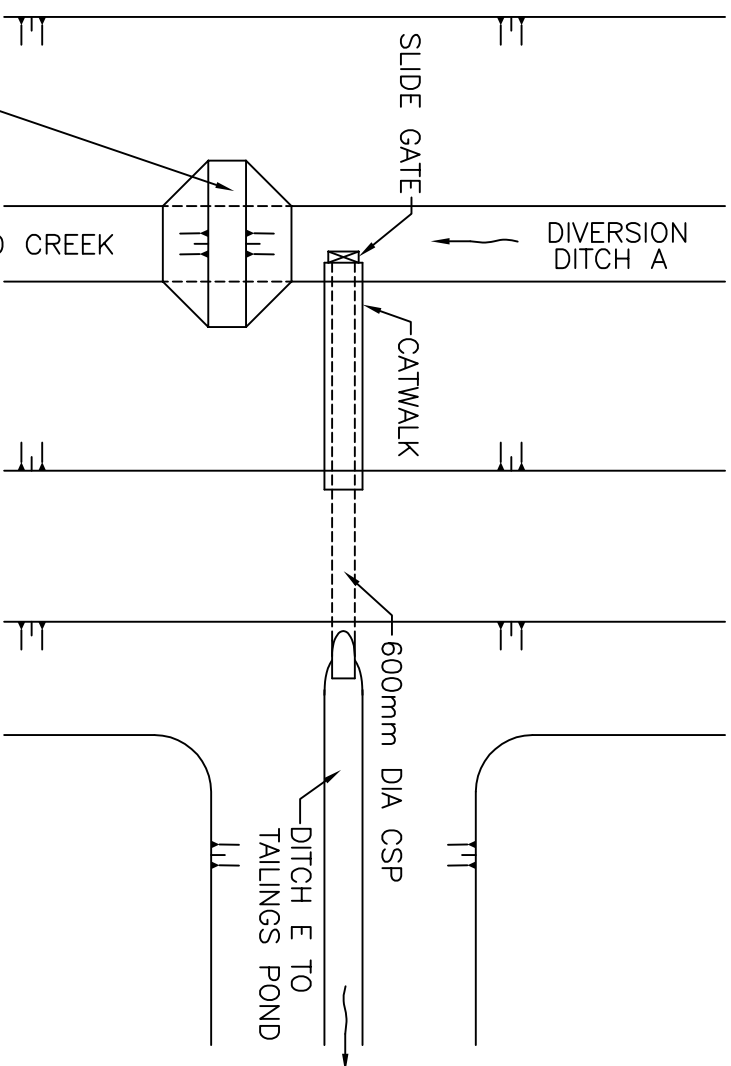
GO CREEK DIVERSION STRUCTURE
PLAN



WEIR SILL APPROX. 0.6m
ABOVE PIPE INVERT

600mm DIA CSP

DIVERSION DITCH A



DITCH A DIVERSION STRUCTURE
PLAN

- NOTES**
1. LAYOUTS SHOWN ARE CONCEPTUAL.
 2. FOR LOCATION OF DIVERSION STRUCTURES SEE DRAWING J1-C-013.

NOT FOR CONSTRUCTION



FOR A FULL PROTECTION AND GUARANTEE OF THE WORK, THE CONTRACTOR SHALL BE RESPONSIBLE FOR OBTAINING ALL NECESSARY PERMITS AND APPROVALS FROM THE APPROPRIATE AGENCIES AND AUTHORITIES. THE CONTRACTOR SHALL BE RESPONSIBLE FOR OBTAINING ALL NECESSARY PERMITS AND APPROVALS FROM THE APPROPRIATE AGENCIES AND AUTHORITIES. THE CONTRACTOR SHALL BE RESPONSIBLE FOR OBTAINING ALL NECESSARY PERMITS AND APPROVALS FROM THE APPROPRIATE AGENCIES AND AUTHORITIES.	
DWG. NO.	REFERENCE DRAWINGS

PROJECT	
PROCESS	
CIVIL	
MECH.	
STRUCT.	
PIPING	
SERVICES	
ELECT.	
INSTR.	
NO	DESCRIPTION
	ISSUE/REVISIONS
BY	DATE

PROJECT	
PROCESS	
CIVIL	
MECH.	
STRUCT.	
PIPING	
SERVICES	
ELECT.	
INSTR.	
NO	DESCRIPTION
	ISSUE/REVISIONS
BY	DATE

SECTION:	DATE
SCALE:	
DESIGN BY: RLO	
DRAWN BY: CW	
CHECK BY: ---	
APP. BY: HM	

FILENAME:	PROJECT NUMBER	DRAWING NUMBER	REV.
	M09234A02	7.6-6	A

Kohn Cippen Berger

Yukon Zinc CORPORATION

TAILINGS FACILITY
GO CREEK AND DITCH "A"
DIVERSION STRUCTURES