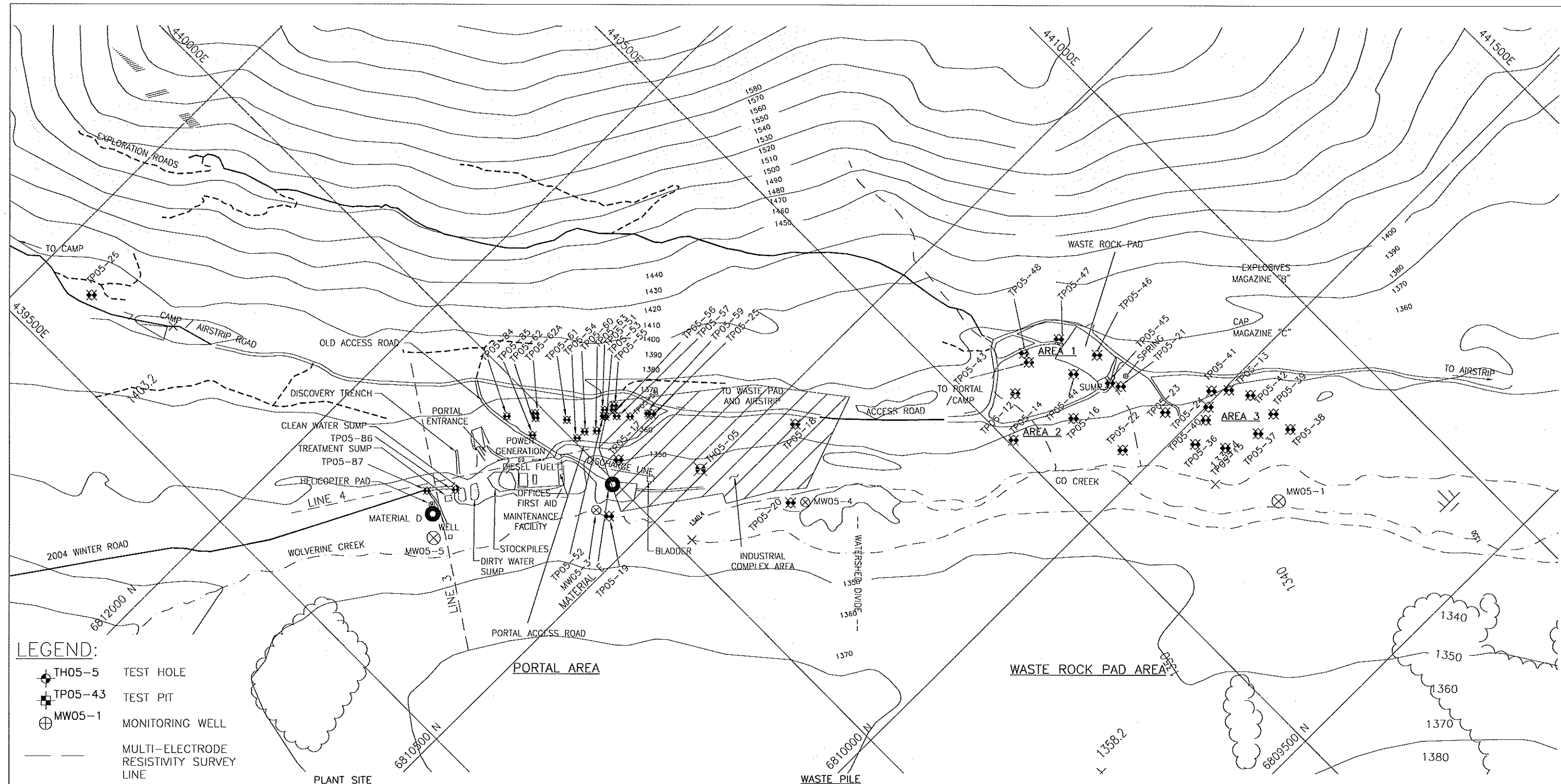


Date: 10/5/2005
 Scale: 1=40(P/S)
 Drawing File: M:\09234402-Wolverine Feasibility Design & Enviro. Assess\400 Design\410 Drawings\ear\B-2.8-1&2.dwg (ewong)
 Xref: Wlvcontour1, Comp to Airport_Roads



- LEGEND:**
- ⊕ TH05-5 TEST HOLE
 - ⊕ TP05-43 TEST PIT
 - ⊕ MW05-1 MONITORING WELL
 - MULTI-ELECTRODE RESISTIVITY SURVEY LINE

AREA 1		
TH05-5	440113.6E	6810508.7N
TP05-17	440030.0E	6810613.3N
TP05-18	440274.8E	6810451.7N
TP05-19	439954.2E	6810559.1N
TP05-20	440179.3E	6810366.3N

PLANT SITE		
MW05-1	440744.1E	6809807.5N
MW05-3	439946.6E	6810581.0N
MW05-4	440197.0E	6810350.3N
TP05-25	440120.0E	6810629.0N
TP05-26	439612.0E	6811409.0N

AREA 2		
MW05-5	439727E	6810735N
TP05-51	440071E	6810687N
TP05-52	440063E	6810681N
TP05-53	440064E	6810678N
TP05-54	440007E	6810686N
TP05-55	440087E	6810681N
TP05-56	440081E	6810677N
TP05-57	440078E	6810666N
TP05-58	440093E	6810650N
TP05-59	440117E	6810633N
MTP05-60	440023E	6810685N
TP05-61	440016E	6810719N
TP05-62	439982E	6810757N
TP05-62A	439987E	6810763N

AREA 2		
TP05-63	440038E	6810672N
TP05-84	439951E	6810792N
TP05-85	439959E	6810741N
TP05-86	439808E	6810766N
TP05-87	439777E	6810797N

AREA 1		
TP05-43	440616.0E	6810255.0N
TP05-44	440653.0E	6810190.0N
TP05-45	440686.0E	6810138.0N
TP05-46	440702.0E	6810185.0N
TP05-47	440676.0E	6810247.0N
TP05-48	440620.0E	6810271.0N

AREA 2		
TP05-12	440563.5E	6810234.6N
TP05-14	440508.0E	6810183.0N
TP05-16	440602.2E	6810139.1N
TP05-21	440693.3E	6810121.8N
TP05-22	440622.5E	6810045.9N

AREA 3		
TP05-13	440814.0E	6809993.0N
TP05-15	440743.5E	6809930.1N
TP05-23	440715.0E	6810032.5N
TP05-24	440771.0E	6809997.0N
TP05-36	440713.0E	6809969.0N
TP05-37	440789.0E	6809909.0N
TP05-38	440840.0E	6809877.0N
TP05-39	440838.0E	6809914.0N
TP05-40	440753.0E	6809985.0N
TP05-41	440793.0E	6810012.0N
TP05-42	440833.0E	6809962.0N

SAMPLES FOR COMPACTION TESTING
 MATERIAL D - 439754E, 6810764N
 MATERIAL E - 439995E, 6810592N

File Name: FIGURE 2.7-2.dwg
 Projection: UTM Zone 9, NAD 27 Date: OCTOBER 24, 2005
 Prepared By: KLOHN CRIPPEN
 Data Sources: Government of the Yukon, Yukon Zinc Corporation

Yukon Zinc CORPORATION
Wolverine Project
 Figure 8-2
 PLANT SITE AND WASTE ROCK PILE
 SITE INVESTIGATION PLAN