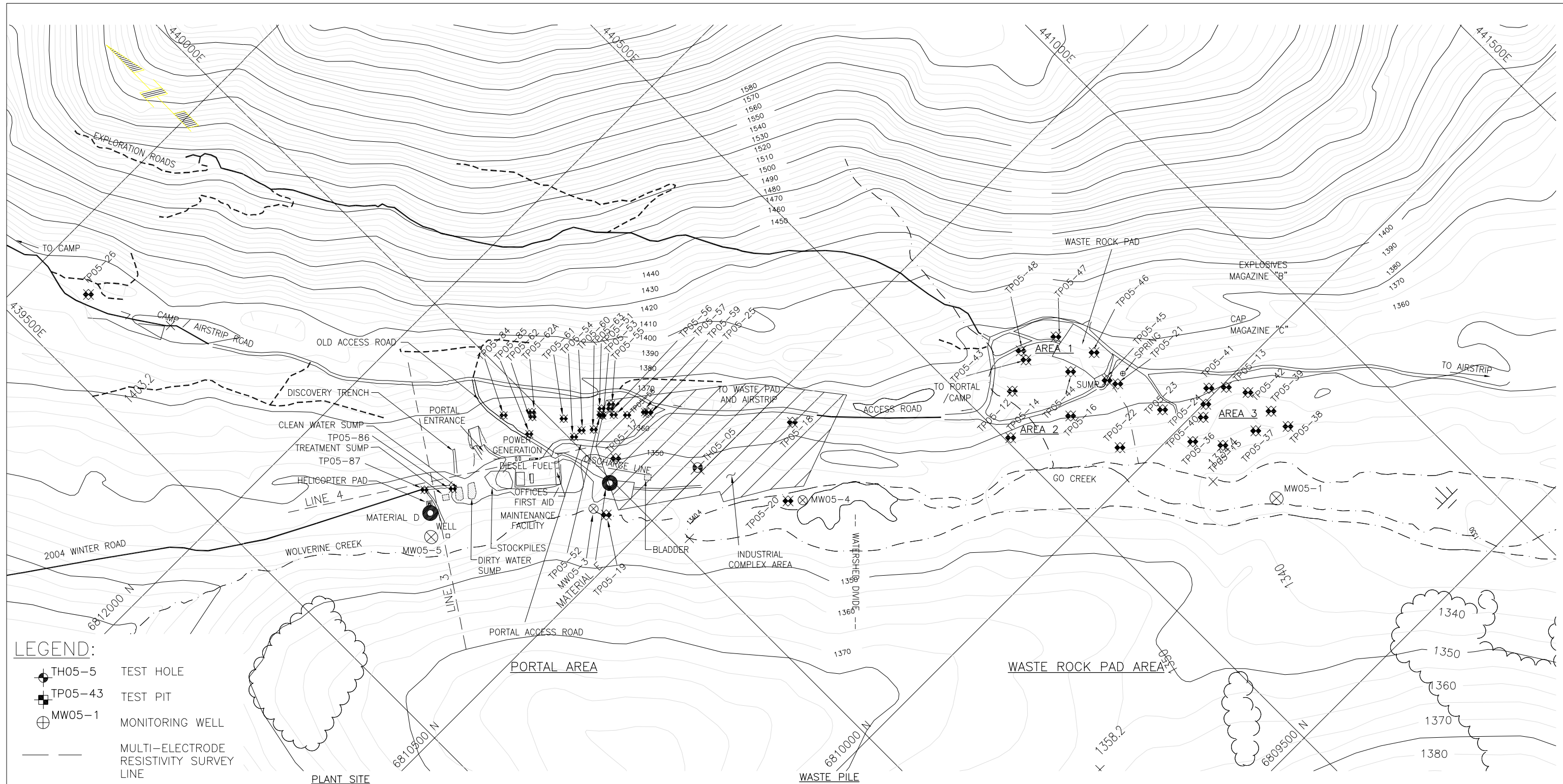


Date: 10/5/2005
 Scale: 1=40(P/S)
 Drawing File: M:\M092344A02-Wolverine Feasibility Design & Enviro. Assess\400 Design\410 Drawings\ear\B-2.8-1&2.dwg (cwong)
 Xrefs: Wolcontours1, Camp to Airport Roads



- LEGEND:**
- TH05-5 TEST HOLE
 - TP05-43 TEST PIT
 - MW05-1 MONITORING WELL
 - — — MULTI-ELECTRODE RESISTIVITY SURVEY LINE

AREA 1		
TH05-5	-	440113.6E, 6810508.7N
TP05-17	-	440030.0E, 6810613.3N
TP05-18	-	440274.8E, 6810451.7N
TP05-19	-	439954.2E, 6810559.1N
TP05-20	-	440179.3E, 6810366.3N

PLANT SITE		
MW05-1	-	440744.1E, 6809807.5N
MW05-3	-	439946.6E, 6810581.0N
MW05-4	-	440197.0E, 6810350.3N
TP05-25	-	440120.0E, 6810629.0N
TP05-26	-	439612.0E, 6811409.0N

AREA 2		
MW05-5	-	439727E, 6810735N
TP05-51	-	440071E, 6810687N
TP05-52	-	440063E, 6810681N
TP05-53	-	440064E, 6810678N
TP05-54	-	440007E, 6810686N
TP05-55	-	440087E, 6810681N
TP05-56	-	440081E, 6810677N
TP05-57	-	440078E, 6810666N
TP05-58	-	440093E, 6810650N
TP05-59	-	440117E, 6810633N
MTP05-60	-	440023E, 6810685N
TP05-61	-	440016E, 6810719N
TP05-62	-	439982E, 6810757N
TP05-62A	-	439987E, 6810763N

AREA 2		
TP05-63	-	440038E, 6810672N
TP05-84	-	439951E, 6810792N
TP05-85	-	439959E, 6810741N
TP05-86	-	439808E, 6810766N
TP05-87	-	439777E, 6810797N

AREA 1		
TP05-43	-	440616.0E, 6810255.0N
TP05-44	-	440653.0E, 6810190.0N
TP05-45	-	440686.0E, 6810138.0N
TP05-46	-	440702.0E, 6810185.0N
TP05-47	-	440676.0E, 6810247.0N
TP05-48	-	440620.0E, 6810271.0N

AREA 2		
TP05-12	-	440563.5E, 6810234.6N
TP05-14	-	440508.0E, 6810183.0N
TP05-16	-	440602.2E, 6810139.1N
TP05-21	-	440693.3E, 6810121.8N
TP05-22	-	440622.5E, 6810045.9N

AREA 3		
TP05-13	-	440814.0E, 6809993.0N
TP05-15	-	440743.5E, 6809930.1N
TP05-23	-	440715.0E, 6810032.5N
TP05-24	-	440771.0E, 6809997.0N
TP05-36	-	440713.0E, 6809969.0N
TP05-37	-	440789.0E, 6809909.0N
TP05-38	-	440840.0E, 6809877.0N
TP05-39	-	440838.0E, 6809914.0N
TP05-40	-	440753.0E, 6809985.0N
TP05-41	-	440793.0E, 6810012.0N
TP05-42	-	440833.0E, 6809962.0N

SAMPLES FOR COMPACTION TESTING
 MATERIAL D - 439754E, 6810764N
 MATERIAL E - 439995E, 6810592N

File Name: FIGURE 2.7-2.dwg
 Projection: UTM Zone 9, NAD 27 Date: OCTOBER 24, 2005
 Prepared By: KLOHN CRIPPEN
 Data Sources: Government of the Yukon, Yukon Zinc Corporation

Yukon Zinc CORPORATION
Wolverine Project
 Figure 2.7-2
 PLANT SITE AND WASTE ROCK PILE
 SITE INVESTIGATION PLAN