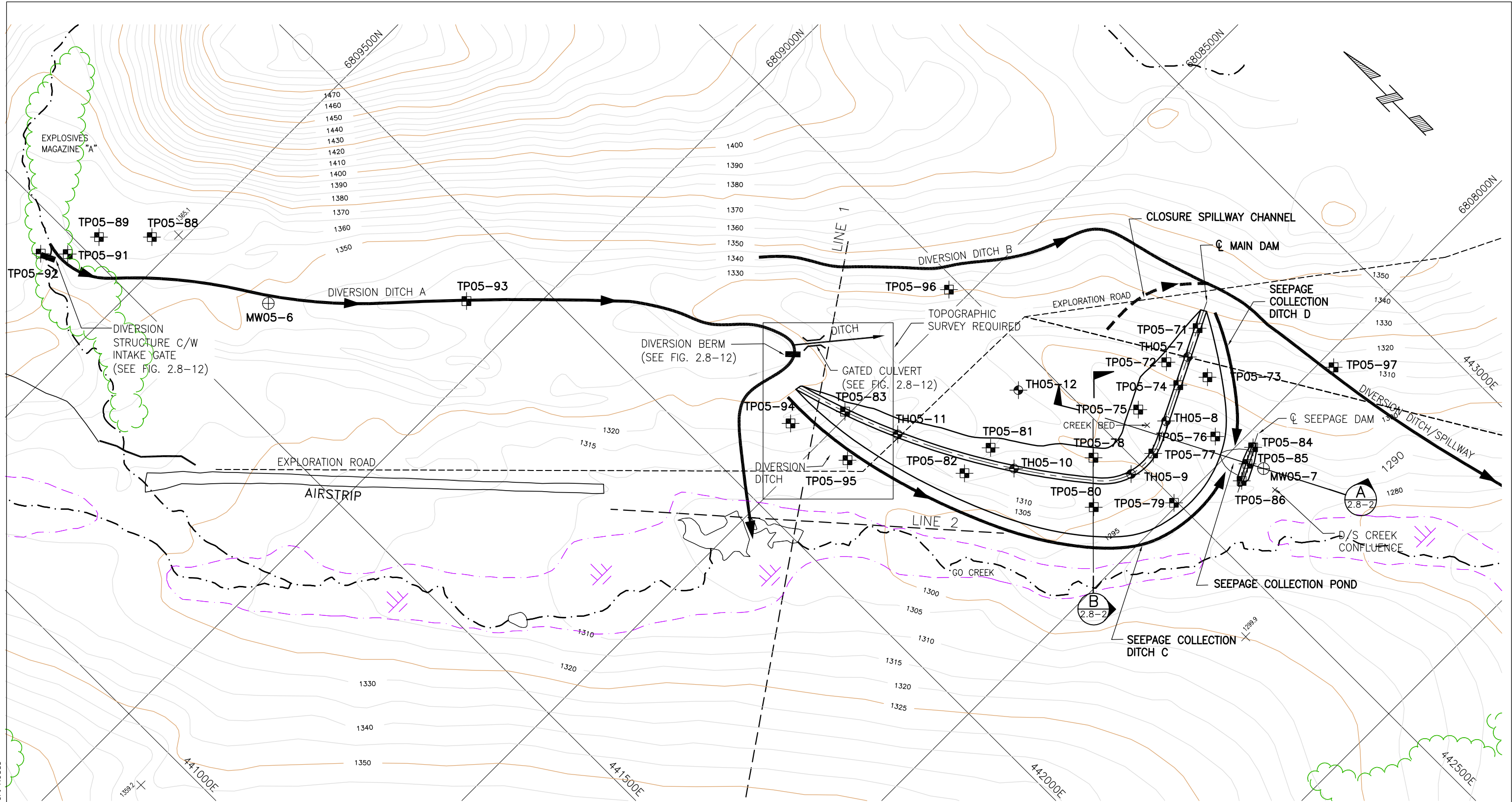


Scale: 1=40(P.S)  
 Drawing File: M:\092344A02-Wolverine Feasibility Design & Enviro. Assess\400 Design\410 Drawings\ear\B-2.8-1&2.dwg (cwong)  
 Xrefs: Wolycontour.r1, Camp to Airport Roads



**LEGEND:**

- TH05-1 TEST HOLE
- TP05-1 TEST PIT
- MW05-1 MONITORING WELL
- MULTI-ELECTRODE RESISTIVITY SURVEY LINE

**CAMP SITE**

TP05-88	-	441532E,	6809540N
TP05-89	-	441443E,	6809603N

**DIVERSION DITCHES**

TP05-91	-	441475E,	6809620N
TP05-92	-	441443E,	6809653N
TP05-93	-	441893E,	6809089N
TP05-94	-	442134E,	6808558N
TP05-95	-	442158E,	6808446N
TP05-96	-	442481E,	6808529N
TP05-97	-	442847E,	6807978N

**SEEPAGE DAM**

TP05-84	-	442656E,	6807979N
TP05-85	-	442629E,	6807966N
TP05-86	-	442602E,	6807952N

**TAILINGS DAM**

TP05-71	-	442732E,	6808187N
TP05-72	-	442654E,	6808183N
TP05-73	-	442685E,	6808116N
TP05-74	-	442641E,	6808142N
TP05-75	-	442564E,	6808160N
TP05-76	-	442324E,	6808036N
TP05-77	-	442529E,	6808090N
TP05-78	-	442453E,	6808156N
TP05-79	-	442495E,	6808007N
TP05-80	-	442395E,	6808097N
TP05-81	-	442343E,	6808291N
TP05-82	-	442281E,	6808291N
TP05-83	-	442212E,	6808507N

TH05-7	-	442686E,	6808164N
TH05-8	-	442583E,	6808114N
TH05-9	-	442479E,	6808092N
TH05-10	-	442346E,	6808238N
TH05-11	-	442248E,	6808417N
TH05-12	-	442444E,	6808326N
MW05-6	-	441655E,	6809322N
MW05-7	-	442643E,	6807941N

File Name: FIGURE 2.8-1.dwg  
 Projection: UTM Zone 9, NAD 27 Date: OCTOBER 24, 2005  
 Prepared By: KLOHN CRIPPEN  
 Scale: 0 100 m  
 Data Sources: Government of the Yukon, Yukon Zinc Corporation

**Yukon Zinc CORPORATION**  
**Wolverine Project**  
 Figure 2.8-1  
 TAILINGS IMPOUNDMENT  
 SITE INVESTIGATION PLAN