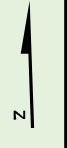


**Legend**

- ★ Community of Interest
- Community
- Proposed Mine Site
- ⊗ Pre-existing Mine Site
- Road
- Mine Access Road
- ☪ Lake
- ~ River
- - - Provincial/State Boundary



N W T



**Yukon Zinc CORPORATION**

**Wolverine Project**

**Figure 7.14-1**  
**Socio-Economic Assessment**  
**Communities of Interest**

File Name: YukonZinc\_Fig7\_14-1\_Socio\_economic.mxd

Projection: UTM Zone 9, NAD 27      Date: October 20, 2005

Scale: 1:1,500,000

0 10 20 30 40 50  
 Kilometres

Prepared By:  
 AXYS

Data Sources: Government of the Yukon, Yukon Zinc Corporation, Centre for Topographic Information

To Cassiar ↓

To Ft. Nelson →

To Dawson City ↑

To Macmillan Pass ↑

To Haines Junction ←