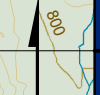



Legend

- Terrain, Surficial Geology and Soils Local Study Area
- Potential Disturbance Footprint
- Mine Access Road
- Wolverine Camp Main Road
- Roads
- Contour
- Index Contour
- ~~~~~ River
- ~~~~~ Lake
- ~~~~~ Wetland





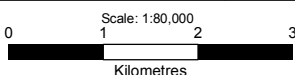
Wolverine Project

Figure 7.3-1
Terrain, Surficial Geology and Soils
Local Study Area

File Name: YukonZinc_Fig7_3-1_Terrain_SurGeo_Soils_LSA.mxd


Projection: UTM Zone 9, NAD 27 Date: October 20, 2005

Scale: 1:80,000



Kilometres

Prepared By:



Data Sources: Government of the Yukon, Yukon Zinc Corporation, Centre for Topographic Information (NTDB)