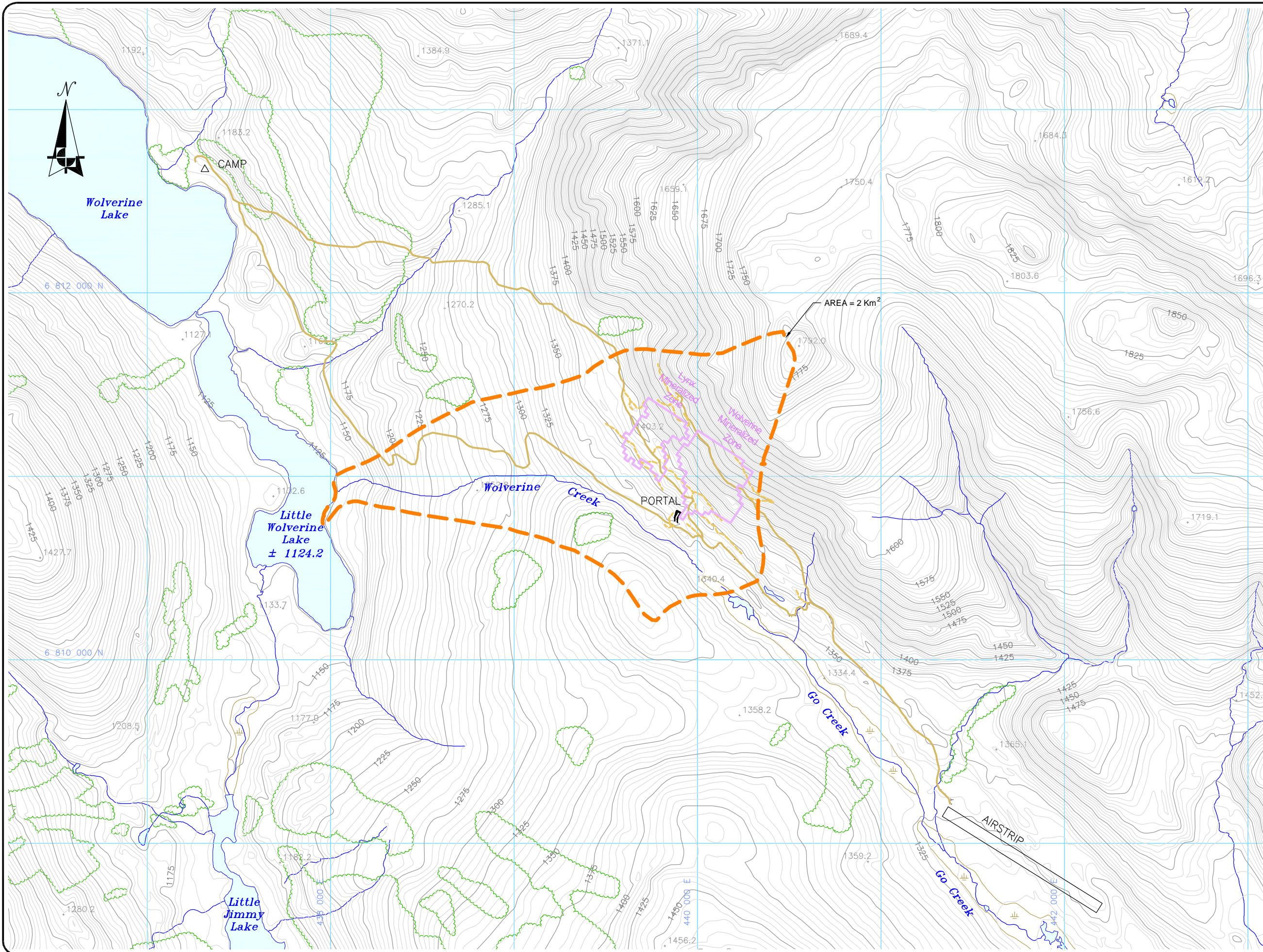


Path: S:\AutoCad\acad-Prj\2005\50-288 Wolverine Yukon Zinc\4D-Report-Oct05\ Plotted on: Oct 13, 2005-4:41pm Edited by: NTO



- LEGEND:**
- GROUND SURFACE CONTOUR (M ASL) - 5m INTERVAL
 - DRAINAGE
 - ROAD - MAIN
 - - - ROAD - DRILL ACCESS
 - ~ TREES
 - MINERALIZED ZONE
 - - - MINE GROUNDWATER LOCAL STUDY AREA (WOLVERINE CREEK WATERSHED)

- Data Sources:**
1. Proposed Roads, contour and drainage data provided by Expatriate Resources on September 22, 2004
 2. Claims and mineralized zones from drawings provided by Yukon Zinc Corporation
 3. Wolverine Creek watershed boundary provided by Madrone Environmental Services Ltd.

REVIEWED BY : DJ/RF/RM
 PREPARED BY : PW
 DATE ISSUED : OCTOBER, 2005
 PROJECT NO. : 50-288
 FILE NAME : 50288-4D-04.dwg
 REVISION : 1



Wolverine Project

**Figure 7.6-1
MINE GROUNDWATER
STUDY AREA**

Date: OCTOBER, 2005
 Projection: UTM Zone 9, NAD 27 File Name: 50288-4D-04.DWG

