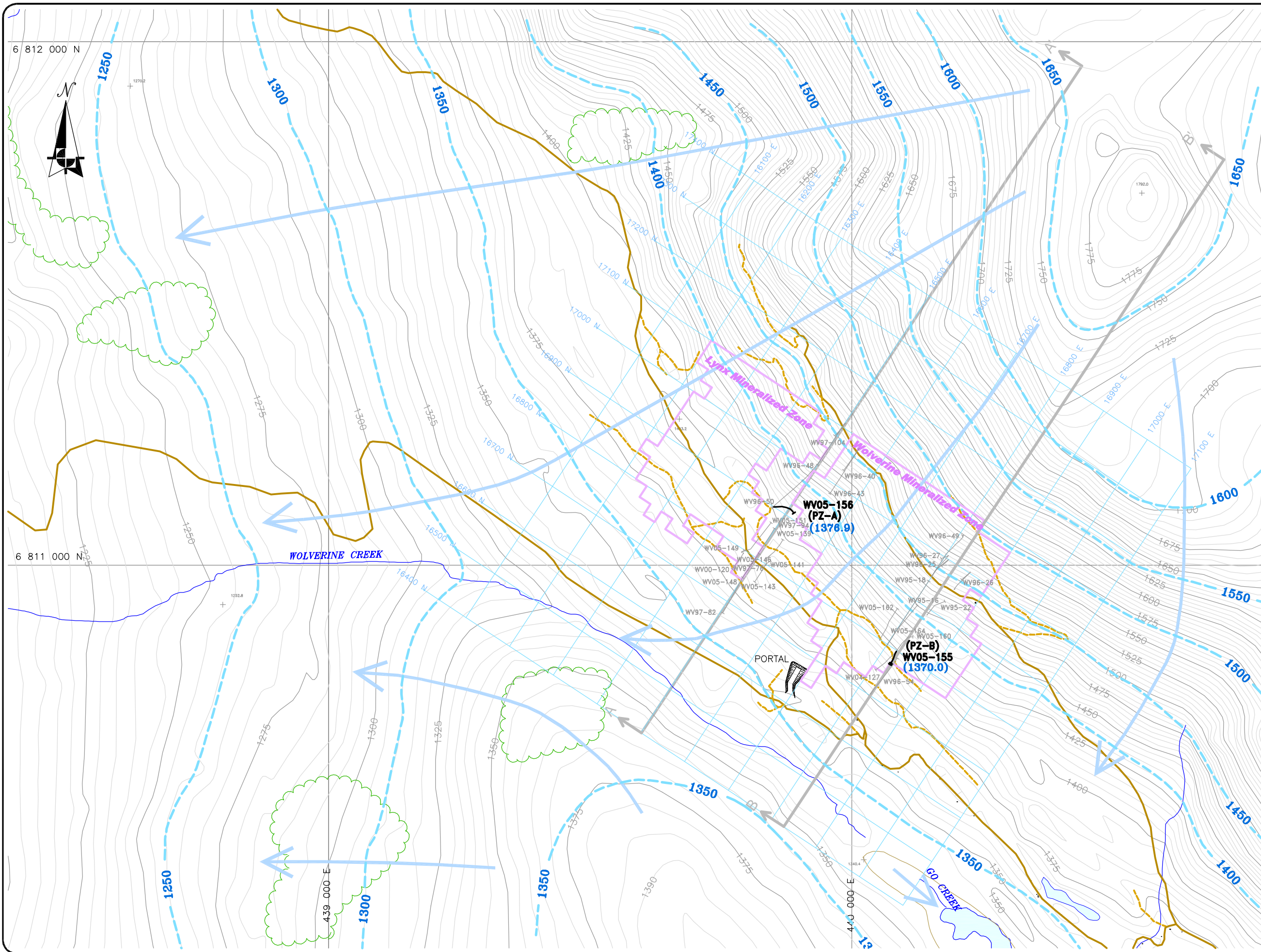


Path: S:\AutoCad\acad-Prj\2005\50-288 Wolverine Yukon Zinc\4D-Report-Oct05\ Plotted on: Oct 13, 2005-4:36pm Edited by: NTo



LEGEND:

- GROUND SURFACE CONTOUR (M ASL) - 5m INTERVAL
- DRAINAGE
- ROAD - MAIN
- ROAD - DRILL ACCESS
- INFERRED GROUNDWATER EQUIPOTENTIAL LINE (M ASL)
- MINERALIZED ZONE
- INFERRED GROUNDWATER FLOW DIRECTION (JULY 1, 2005)
- CROSS SECTION LINES
- PIEZOMETER INSTALLED BY GARTNER LEE IN APRIL 2005 (PROJECTED TO SURFACE)
- WV05-155**
(1370.0) GROUNDWATER ELEVATION MEASURED ON JULY 1, 2005 (M ASL)
- ON-SECTION DIAMOND DRILL HOLE (PROJECTED TO SURFACE)
- WV97-100

- Data Sources:**
1. Proposed Roads, contour and drainage data provided by Expatriate Resources on September 22, 2004
 2. Claims and mineralized zones from drawings provided by Yukon Zinc Corporation
 3. Wolverine Creek watershed boundary provided by Madrone Environmental Services Ltd.

REVIEWED BY : DJ/RF/RM
 PREPARED BY : PW
 DATE ISSUED : OCTOBER, 2005
 PROJECT NO. : 50-288
 FILE NAME : 50288-4D-01.dwg
 REVISION : 1



Wolverine Project

**Figure 7.6-2
 CONCEPTUAL
 HYDROGEOLOGIC MODEL
 PLAN**

Date: OCTOBER, 2005

Projection: UTM Zone 9, NAD 27 | File Name: 50288-4D-01.DWG

0 50 100 200 300m

Scale 1:7,000