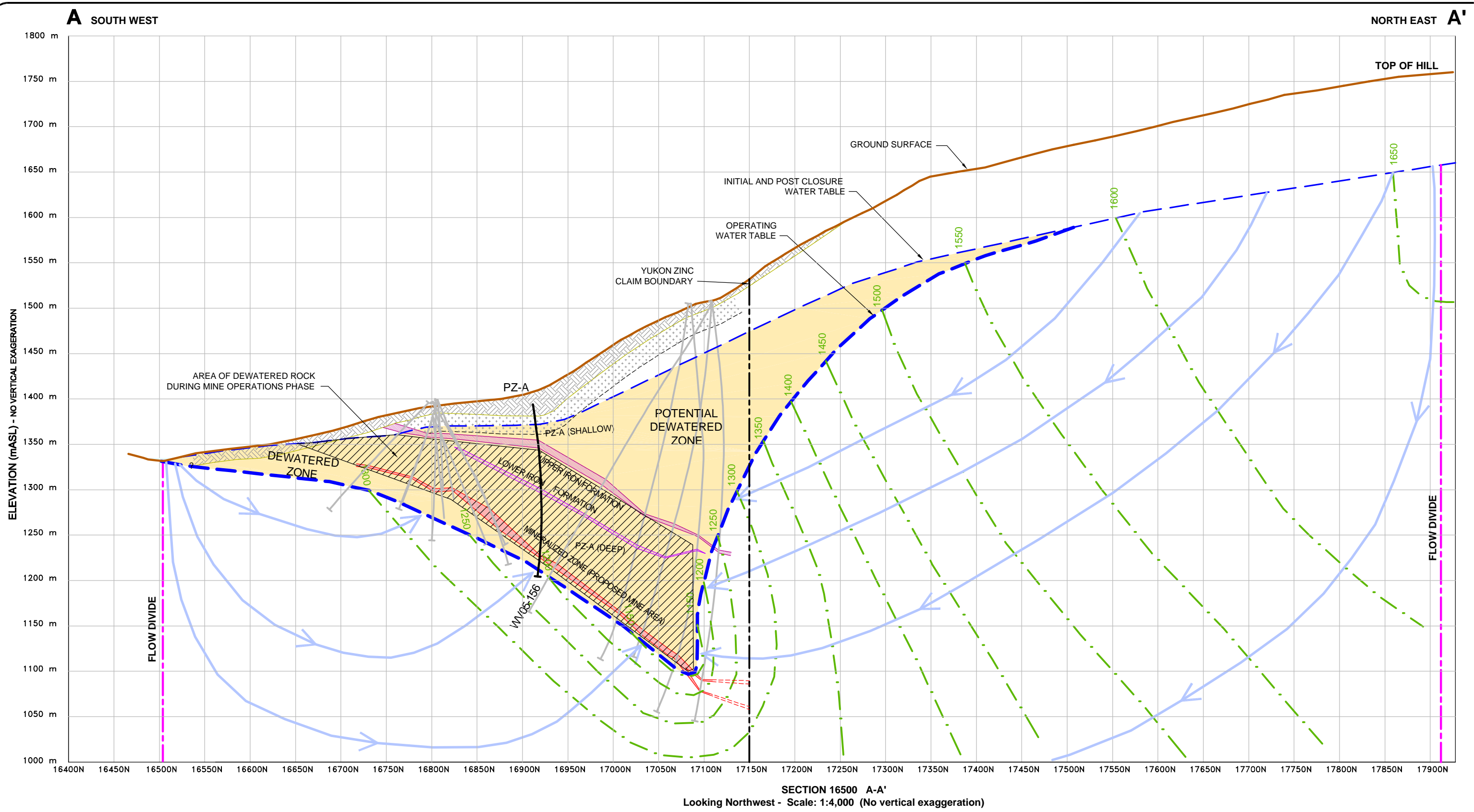


Path: S:\AutoCad\acad-Prj\2005\50-288 Wolverine Yukon Zinc\4D-Report-Oct05\ Plotted on: Oct 31, 2005-10:58am Edited by: pwhiting



SECTION 16500 A-A'  
Looking Northwest - Scale: 1:4,000 (No vertical exaggeration)

LEGEND:	
	OVERBURDEN
	SHALLOW WEATHERED BEDROCK
	UPPER IRON FORMATION
	LOWER IRON FORMATION
	MINERALIZED ZONE
	GROUND WATER FLOW DIVIDE
	INFERRED GROUNDWATER EQUIPOTENTIAL LINE
	INFERRED GROUNDWATER FLOW DIRECTION
	INFERRED WATER TABLE DURING MINE OPERATION
	WATER TABLE - SUMMER 2005
	MINE DEWATERED ZONE
	INFERRED POTENTIALLY DEWATERED ZONE

**PZ-A** PIEZOMETER INSTALLED BY GARTNER LEE IN APRIL 2005  
POINT OF GROUNDWATER ELEVATION MEASUREMENT

EXPLORATION DIAMOND DRILL HOLE DRILLED BY OTHERS

K = HYDRAULIC CONDUCTIVITY (cm/s)

REVIEWED BY: DJ/RF/RM  
PREPARED BY: NT/PW  
DATE ISSUED: OCTOBER, 2005  
PROJECT NUMBER: 50-288  
FILE NAME: 50288-4D-06.dwg  
REVISION: 1

File Name: 50288-4D-06.DWG	Date: OCTOBER, 2005
Notes: 1. Hydrostratigraphic layers to be used for interpretation purposes only. Thickness and extent may vary significantly between boreholes. 2. Inferred groundwater equipotential and flow directions based on limited data and analytical equations.	Projection: N/A
Data Sources: Base Cross Sections Provided by Yukon Zinc Corporation	

# Yukon Zinc

CORPORATION

## Wolverine Project

**Figure 7.6-7**  
**CONCEPTUAL HYDROGEOLOGIC MODEL**  
**CROSS SECTION A-A' (Operating)**