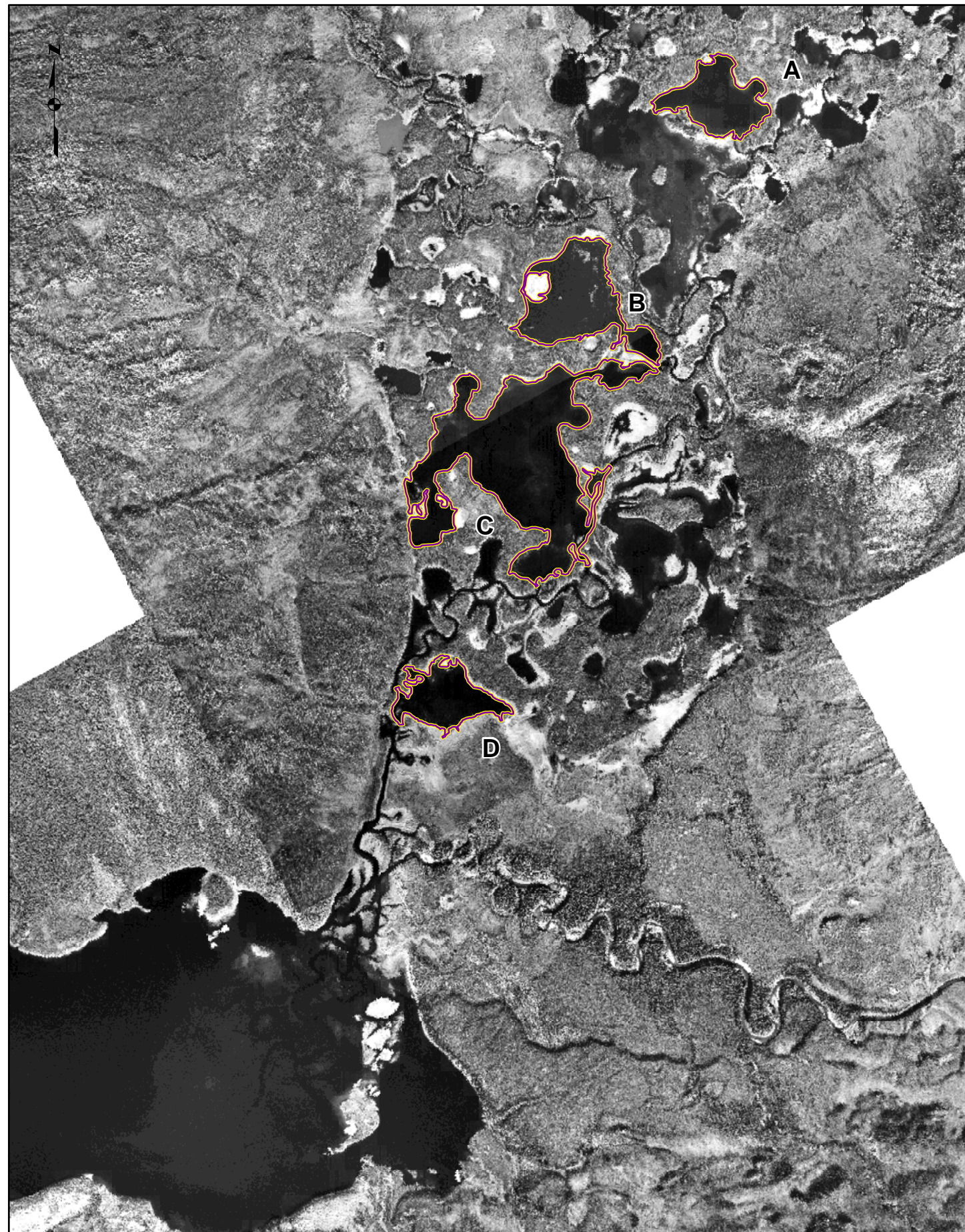
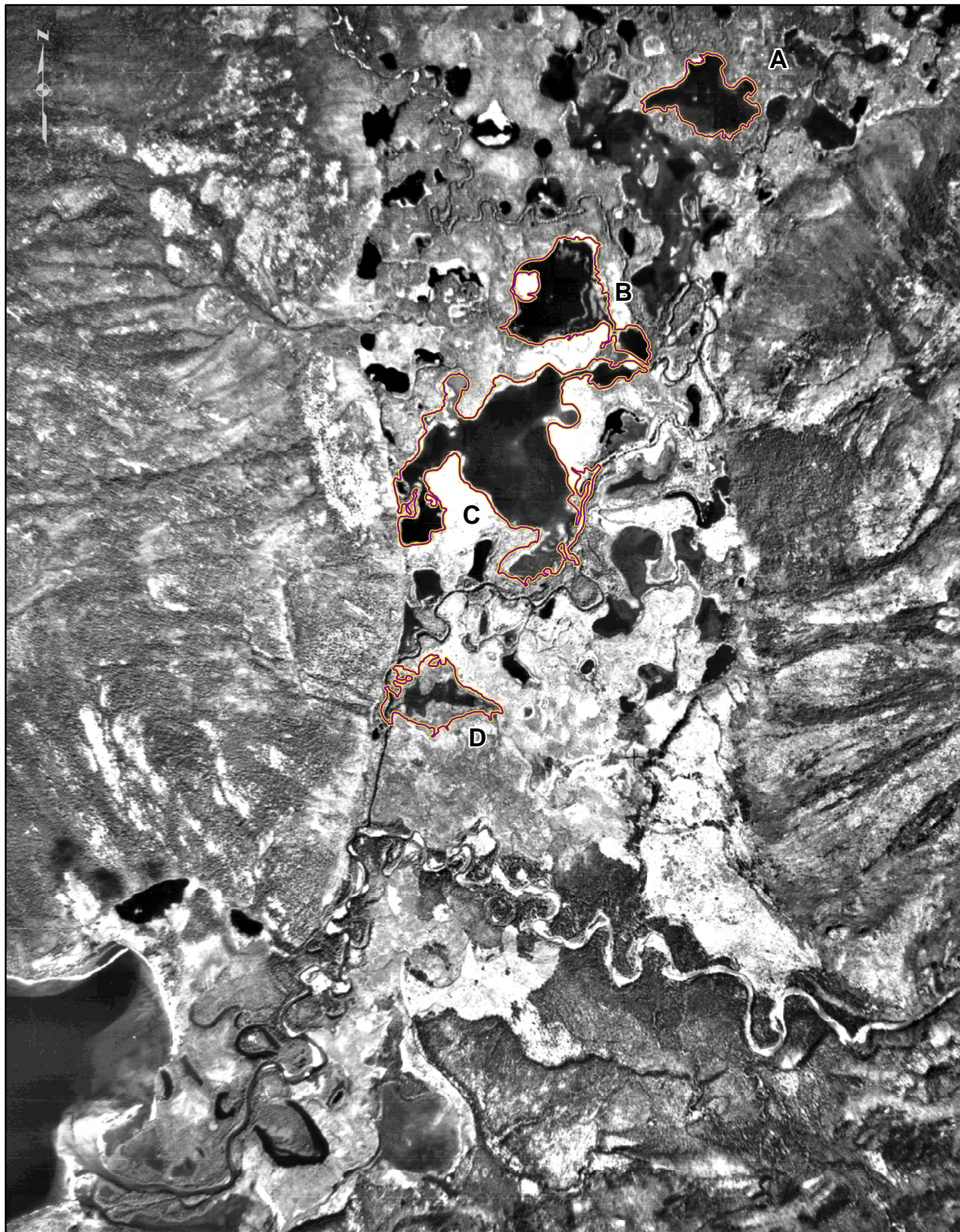


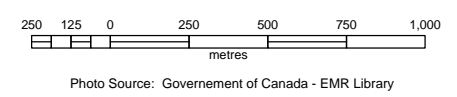
**CHAPTER 7**  
**APPENDIX 7G**

**Comparison of Historical  
Aerial Photography at Roop Lake**

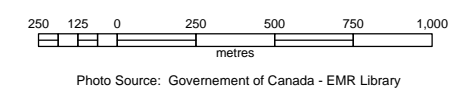




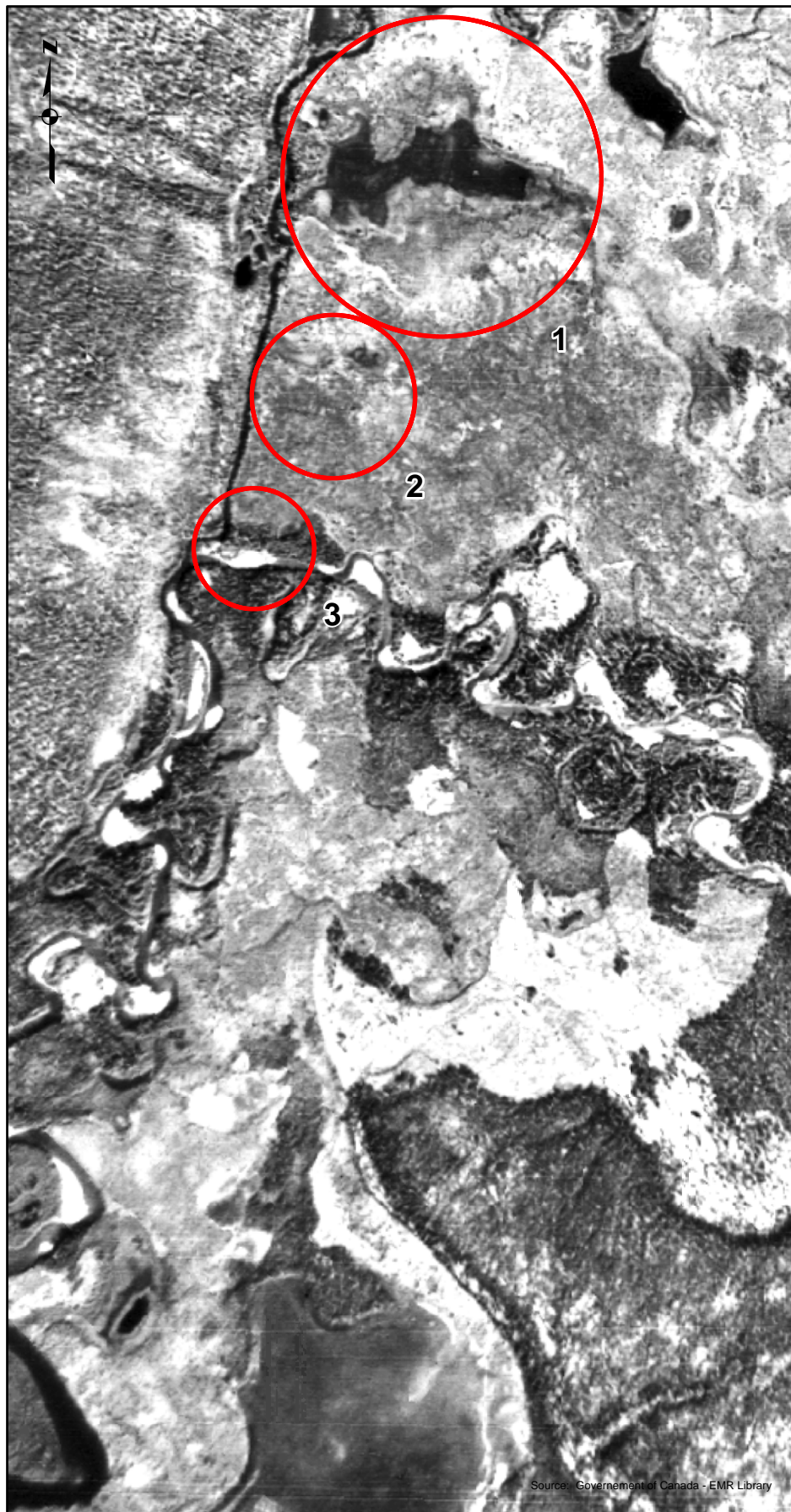
Aerial Photo: Roop Creek - 1  
 Date of Photo: July 15, 1947  
 Water Elevation: Approx. 661 m (assuming the water level was 15' (4.6 m) lower than the upper limit of current water license)



Aerial Photo: Roop Creek - 2  
 Date of Photo: June 9, 1996  
 Water Elevation: 664.845 metres



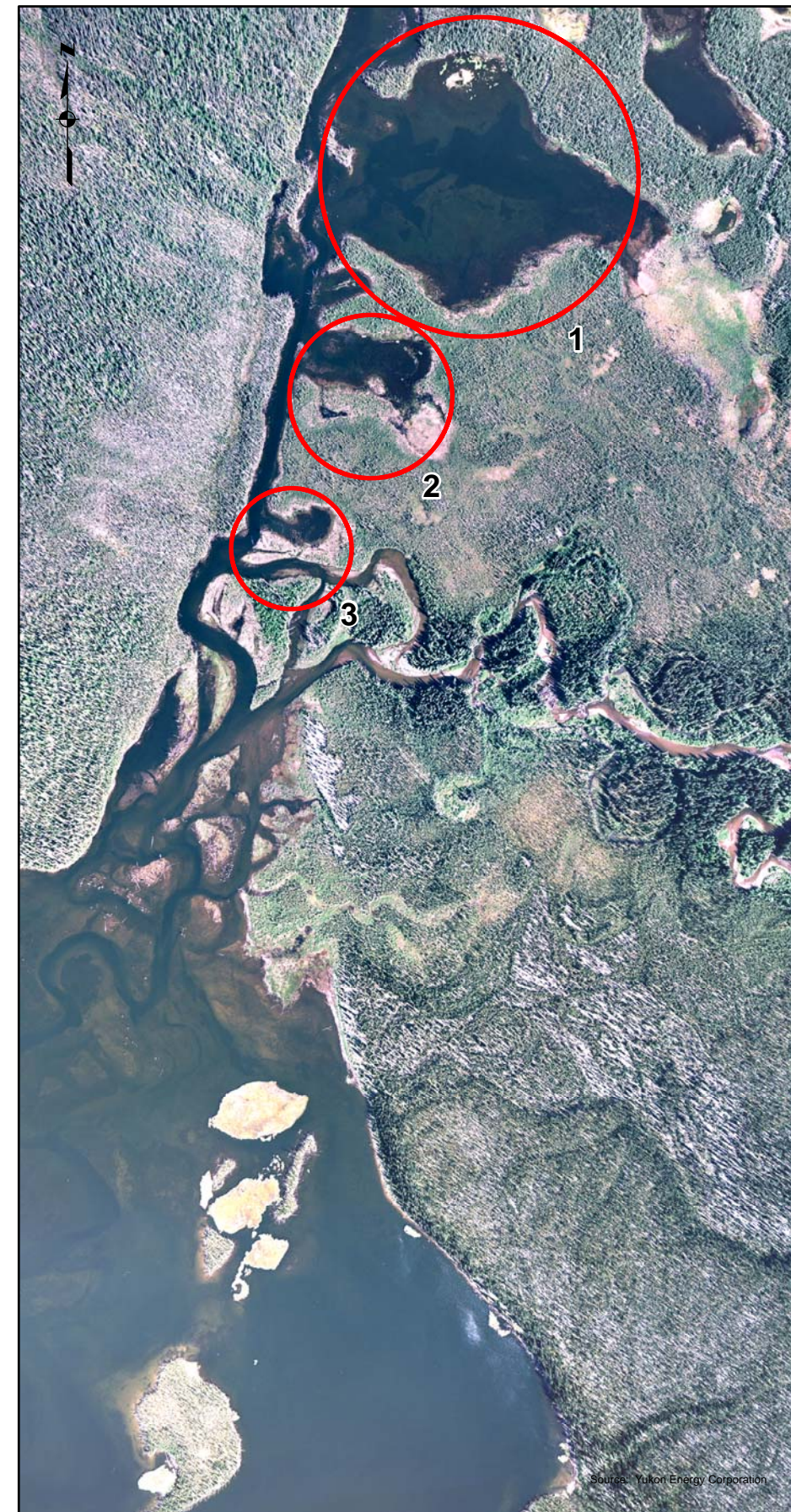




Aerial Photo: Roop Creek - 1  
Date of Photo: July 15, 1947  
Water Elevation: Approx. 661 m (assuming the water level was 15' (4.6 m) lower than the upper limit of current water license)



Aerial Photo: Roop Creek - 2  
Date of Photo: June 9, 1996  
Water Elevation: 664.845 metres



Aerial Photo: Roop Creek 3  
Date of Photo: July 3, 2008  
Water Elevation: 665.533 metres

