

PAP 88-016

MAY

56 mile  
travel  
pickup

26<sup>th</sup> Prospecting, on Bluffs,  
Near Lake Neberg

Volcanics

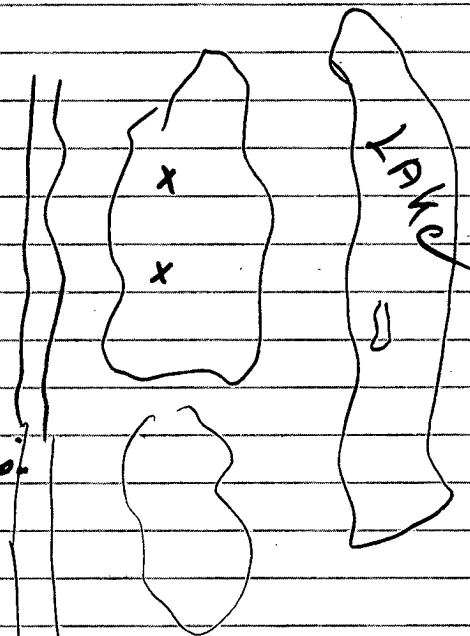
Some

Quartz

veins

with

mineralization



mile

28

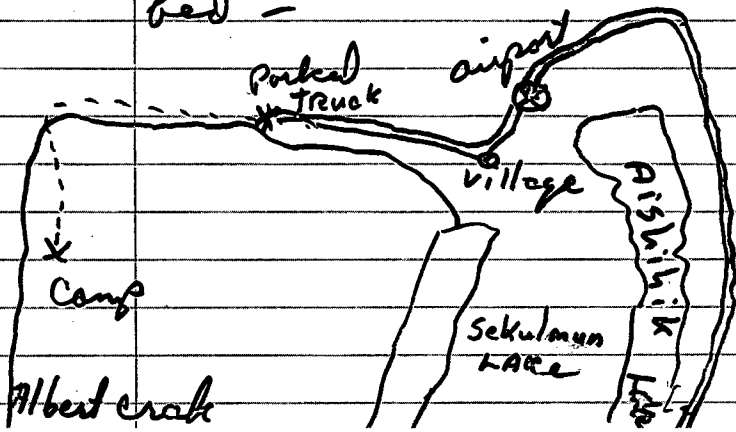
Took two  
Samples and  
Sent them into  
NORANDA

Lake # 1 & 2

June 1 - 5 - Aishihik Lake area

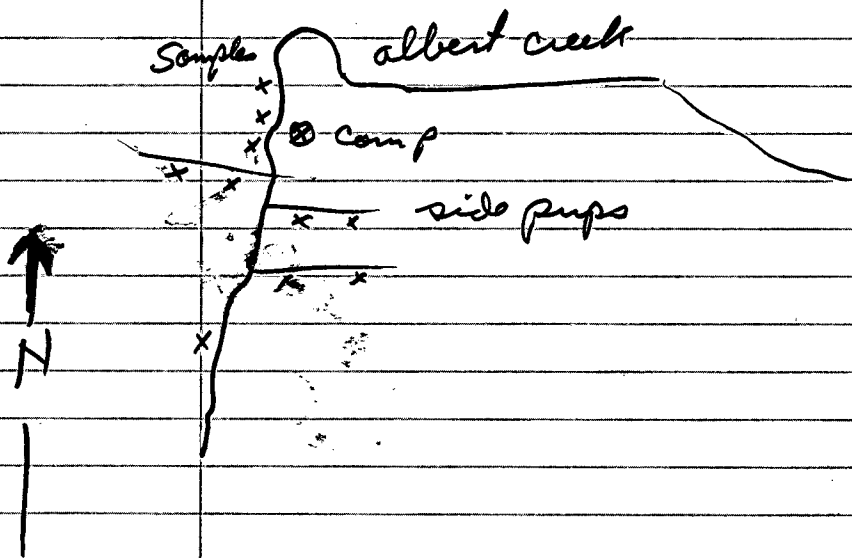
June 1<sup>st</sup> Drove from Whitehorse up Aishihik Lake Road & around the head of lake - across North End of Sekulmun Lake along 4x4 Road to where road meets Albert Creek -

80 miles from Alasca Highway and approx 150 miles from Whitehorse. parked the pickup there and walked in approx 6 miles to where Albert Creek turns South - crossed the creek there and parked in a further mile and made camp. It was late - so went to bed -



June 2<sup>nd</sup>

panned albert creek near  
camp and along bars for about  
one mile up stream from camp  
No signs to speak of. went up  
side pups about one mile  
south of camp and to left as  
we traveled up stream. Some  
color. but very fine and not  
very encouraging. went back  
to camp in evening, and  
made notes -

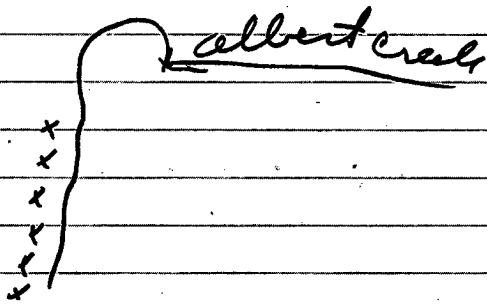


June 3<sup>rd</sup>

went across Albert Creek  
from camp (west side)  
and took Rock samples  
along bluff up stream  
from camp. Took some  
good rock samples from  
bedrock bluffs. These  
bluffs are composed of mostly  
Biotite Schist with fractures  
and seams of quartz. The  
further up stream the more  
seams & fractures of quartz.

Took samples # (Al-1-12)

Saw in one piece what  
could be grains of Gold - but  
could not be sure. will  
take them into Noranda  
for analysis.



June 4<sup>th</sup>

left camp early and went  
~~up~~ up Albert creek about  
three miles to large  
creek coming in from  
the North West (on  
the Right as we headed up  
Stream)

This stream carried quite  
a bit of water and had a  
good fish up into the  
hills - It was also a  
fairly long stream. We  
panned for about a mile  
up stream and also took  
several rock samples -  
we did not find any  
significant shows of Gold  
but found some interesting  
rock samples. Lots of  
quartz in creek and some  
hornfelsed Schist.  
Came back to camp late  
in evening.

June 5<sup>th</sup>

Broke Camp - packed up rock samples and packed back out to truck - arrived at truck at 12:30 - then proceeded to drive back South to Whitehorse arrived back home at 6:30 that evening. No problems enroute. Except noise in water pump on truck.

Total miles back approx  
150 miles

Total miles on trip  
300 miles

or

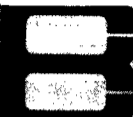
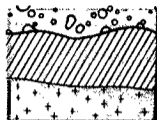
660 Kilometers

took samples into Noranda

Ors

Bondar-Clegg & Company Ltd.

136 Industrial Road  
Whitehorse, Yukon Territory Y1A 2V1  
Phone: (403) 667-6523  
Telex: 036-8-460



BONDAR-CLEGG

REPORT: V88-03951-0

PROJECT: NONE GIVEN

SAMPLE NUMBER	ELEMENT UNITS	AU PPB	PT PPB	PD PPB	AG PPM	CU PPM
------------------	------------------	-----------	-----------	-----------	-----------	-----------

R2 TELEGRAPH 1

<5

0.2

260

R2 ALBERT 1

<5

<15

<2



June 10<sup>th</sup> Friday  
DAWSON AREA

Drove up to Dawson from  
Whitehorse in pickup  
kilometers at start:

75972.5

Arrived at Dawson airport  
at 3:00 and waited for  
the plane until 4:00

Mileage at Dawson

76482.3

Total mile 509.9 Kilo

flew into Thistle creek  
at 4:15 arrived into  
Thistle at 6:00 and  
made camp at mouth  
of Blueberry Creek  
about 1/2 mile downstream

June 11<sup>th</sup> Saturday

Up early and walked up  
Thistle Creek to mouth of  
Blueberry about  $\frac{1}{2}$  mile

Took some samples (pan)  
at mouth and got some  
color - went up Blueberry  
about 2 miles and found  
some old workings - So  
spent some time at that  
location - Some gold flakes  
but Not too impressive -  
took some rock sample  
Come back to camp in  
late evening -

Blueberry very shallow from  
mile up & on up to top -  
Very little gravel or rocks to  
hold Gold - bedrock about foot  
down with no clay or gravel  
to hold any Gold - looks like  
a poor creek for Placer -  
took lots of pans - No results  
to speak of -

Sunday  
June 12<sup>th</sup>

Up about 7:00 and walked up  
Thistle creek about 4 miles  
to Dredge - panned all along  
Creek - but Not much in  
Coloro. panned Arizona  
Creek coming in from  
North (left) side and  
went up this creek about  
2 miles - Not much  
gravel - lots of swamp -  
- very little dirt over rocks.  
Came back down Thistle  
and took some rock samples  
from a large Quartz vein  
1<sup>st</sup> zone - some large  
stringers all along this  
bank (North side)

labeled these Arizona 1, 2, 3

Came back to camp - arrived  
at 7:00 P.M.

June 13<sup>th</sup> ~~Tuesday~~ Monday

Scotch Gulch

Went down Thistle Creek from  
Camp today to fairly long creek  
coming in from North (Right)  
side of Thistle going downstream  
Creek is about 2 miles from  
Camp, the dredge worked up  
into the mouth of this creek.  
Panned at mouth - but not  
much in way of colors. Went up  
this creek about one mile and  
found bedrock about a foot  
down. Some bedrock showing,  
across this creek a little ways  
further up. This creek doesn't  
have much gravel and very few  
rocks - mostly fine gravel &  
sand down to bedrock. Indicate  
very little top soil covering the  
rocks & bedrock. Probably would  
not hold much gold - would wash  
down into Thistle - Got very  
little in the way of colors.  
Come back down and panned  
the side gravels along bench.  
No results -

left creek and came to camp

June 14<sup>th</sup> Tuesday

went up thistle about  
two miles or so to creek  
coming in from North -  
Has more water than the  
other creeks and drains  
a large valley - creek  
called "Nebeuro's Gulch"  
on map - took sample  
Pier and panned up along  
Creek some distance - no  
color and very little outcrop  
lots of black muds covers  
perhaps considerable depth -  
very hard walking and  
lots of swamps - could not  
find any signs of previous  
workings - spent the  
day up this creek and  
came back down to cat  
road and down to camp -  
rained on way back  
to camp -

Nebeuro Gulch

June 15<sup>th</sup> Wednesday

Birds camp and waited for  
plane to come in and pick  
us up from Dawson.

went down to Thistle creek  
and took some rock samples  
from bedrock along south  
side and about one mile  
south west from Blueberry  
bedrock bar is exposed  
in creek and along benches  
near creek - Schist and  
quartz stringers - Some  
large pyrite flecks embedded  
in quartz.  
labeled them

Thistle # 1, 2, 3 -

Plane came in at 4:00 P.M.  
and flew back to Dawson  
to pick up - started drive  
back to Whitehorse.

Thistle Creek

June 16<sup>th</sup> Thursday

drove back down to  
whitehorse and unpacked  
got sample ready to  
take into Bondowaleys -

mileage at start of trip  
~~back down~~

75972.5

mileage at Home

76991.4 →

total mileage on trip:

1018.9 Kilometers

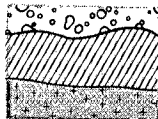
or

612 miles

Took sample into Noranda  
for shipment

Bondar-Clegg & Company Ltd.

130 Pemberton Ave.  
North Vancouver, B.C.  
Canada V7P 2R5  
Phone: (604) 985-0681  
Telex: 04-352667



BONDAR-CLEGG

REPORT: V88-03985.0

PROJECT: NONE GIVEN

SAMPLE NUMBER	ELEMENT UNITS	Au PPB	Ag PPM	Cu PPM
R2 ARIZONA 1		<5	<0.1	4
R2 ARIZONA 2		<5	0.1	40
R2 THISTLE 1		<5	<0.1	24
R2 THISTLE 2		<5	<0.1	8
R2 THISTLE 3		48	0.3	48



June 17<sup>th</sup>

took sample into  
Bonds & legs

(over)

June 18<sup>th</sup> SAT

Drove up to Mendenhall  
Creek and panned some  
there and then on up  
to Marshall creek near  
Hains Junction. Went  
up this creek about 4  
miles to boulders over  
river and panned gravel  
out of 1 hole dug down about  
10 feet - also panned some  
gravel from boulders -  
lots of large boulders about  
20 feet down from top  
some gravel - lot of clay -  
some very fine colors.  
wanted to get up to head  
water to Granite intrusion  
along top end - could not  
get across river or side  
creeks - water too high  
So came back down late  
in day -

total mileage 200 miles  
420 kilometers

June 21-22

Flew out to Semanoff Hills near the Big Salmon to do some prospecting - landed at the place where North Big Salmon enters the Big Salmon - went up creek to bluff near swamp - took samples of rock in creek side + lot of copper (bornite) matched out some pyrite - also went up hills to ridges crossing to Yukon River Spent the day and came back to camp -

Samples

Salmon # 1, 2, 3, 4  
5, 6, 7

003/003



# Chemex Labs Ltd.

Analytical Chemists • Geochemists • Registered Assayers

211 BROOKSBANK AVE., NORTH VANCOUVER,  
BRITISH COLUMBIA, CANADA V7J-1C1

PHONE (604) 954-0221

*BIG SALMON*

To: UNITED KENO HILL MINES LIMITED

409 BLACK ST.  
WHITEHORSE, YUKON  
Y1A 2N2

Project: JPR

Comments:

## CERTIFICATE OF ANALYSIS

SAMPLE DESCRIPTION	PREP CODE	Ag oz/T			
12878	207 ---	0.006			
12879	207 ---	0.002			
12880	207 ---	0.014			
12881	207 ---	0.006			
12882	207 ---	0.185			
12883	207 ---	0.016			
12884	207 ---	0.225			

*SALMON*

LABS

*12883-12884*

June 22

Crossed over ridge to Yukon River and took some samples along the way. Lots of volcanic type rocks - some copper stain - malachite Azurite and Bornite in some samples - the volcanics seem to be wedged in between limestone and occupy an area of about one half mile wide and quite a length. I took some rock samples along Yukon river bank where stream comes down to the River Bar (Cassiar bar) come back to camp

Took samples into Kinn Hill for analysis.

July 9-~~20~~ 16<sup>th</sup>

Danson area - Thistle Creek

9<sup>th</sup> Flew into thistle creek strip in rented plane - landed & made camp in trailer  
located not far from strip & is old camp site - camp still in good shape - except for cook shack messed up - probably from wolverine - stuff scattered all over & hole chewed through door - teeth marks on cans - lots of tools etc left in camp by "Gold mark Fed. of Calgary" looks like they operated only short time - but left lots of equip -

D&H cat D-7 cat & 988 loader still in camp - lots of fuel in tanks - but no sign of operations in couple of years -

10th - Remained in camp and  
got things ready for  
trip up Thistle creek  
to Head - went to  
sample creek (main)  
& side creeks - also  
Rock sample along  
way -

Panned old sluice box  
used by "Gold Mark"  
& got about quarter  
oz. small flakes - lots of  
Gold still in mats -

11<sup>th</sup> started up creek and found  
the dredge sitting in creek  
about three miles up -  
still pretty well intact  
except for buckets - they  
were washed down stream  
and almost covered - Dredge  
is full of water and resting on  
bedrock - riffles are all  
cleaned out - motors and  
equip still there - used  
the dredge as shelter for  
night due to rain storms  
passed around the creek  
but very few colors -  
chipped rocks but not mud  
to assay -



12th -

went up creek another  
three or four miles -  
not much gravel and  
only two or three feet  
to bedrock - creek is  
fairly narrow but  
has rounded ridges.  
lots of black mud  
on side creeks - but  
probably very little  
gravel. Doesn't look  
very promising on  
up. Better prospects  
down on lower end  
toward mouth of the  
Blueberry -

Started back down creek  
made camp at mouth  
of side creek coming in  
from North - No colors

13<sup>th</sup> -

went down past dredge  
and took rock samples  
on way down of outcrops  
along creek sides -  
made the main camp late  
in evening - tired -  
went to bed -

Rock samples 7-1-8

14<sup>th</sup>

Broke camp about  
Noon and loaded  
supplies - flew back  
into Dawson - arrived  
about 4:00 -

Drove into Rock Creek  
and stayed overnight  
at Clayton Midgett's  
place

12<sup>th</sup>

Drove up Hunter Rd  
to take a look at one of  
the operations run by  
Colin Mays. - Some good  
looking gravel in cut -  
took some samples.

Drove out to Dempster  
corner and took one sample  
of rock on bluff -

16<sup>th</sup> - Drove back down to  
whitehouse and took  
in samples to Noranda  
for sending in.  
Unpacked in evening

Total mileage:

600 miles

1260 Kilometers

Yukon Gen.

8806-020

ACME ANALYTICAL LABORATORIES LTD.

852 E. HASTINGS ST. VANCOUVER B.C. V6A 1R6

PHONE (604) 253-3158

FAX (604) 253-1716

GEOCHEMICAL ANALYSIS CERTIFICATE

ICP - .500 GRAM SAMPLE IS DIGESTED WITH 3ML 3-1-2 HCL-HNO3-H2O AT 95 DEG. C FOR ONE HOUR AND IS DILUTED TO 10 ML WITH WATER.

THIS LEACH IS PARTIAL FOR MN FE CA P LA CR MG BA TI B W AND LIMITED FOR NA K AND AL. AU DETECTION LIMIT BY ICP IS 3 PPM.

- SAMPLE TYPE: ROCK AU\* ANALYSIS BY ACID LEACH/AA FROM 10 GM SAMPLE. HG ANALYSIS BY FLAMELESS AA. PT\*\* PD\*\* RH\*\* BY FA-MS.

Thistle

DATE RECEIVED: JUN 07 1988

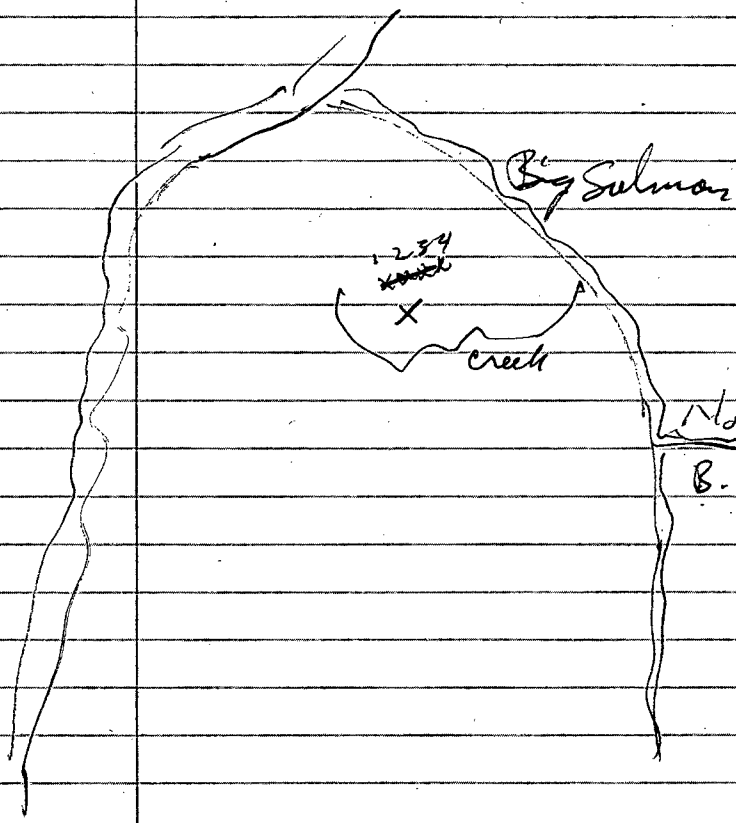
DATE REPORT MAILED: June 16/88

ASSAYER: C. Leong, D. TOYE OR C. LEONG, CERTIFIED B.C. ASSAYERS

NORANDA EXPLORATION PROJECT-8806-020 312 File # 88-1810

SAMPLE#	Mo	Cu	Pb	Zn	Ag	Ni	Co	Mn	Fe	As	U	Au	Th	Sr	Cd	Sb	Bi	V	Ca	P	La	Cr	Mg	Ba	Ti	B	Al	Na	K	W	Au*	Hg	Pt**	Pd**	Rh*
	PPM	PPM	PPM	PPM	PPM	PPM	PPM	PPM	%	PPM	PPM	PPM	PPM	PPM	PPM	PPM	PPM	PPM	%	%	PPM	PPM	%	PPM	%	PPM	%	%	%	PPM	PPB	PPB	PPB	PPB	PPB
R 39902	2	60	2	18	.3	21	6	325	1.79	2	8	ND	1	183	1	2	2	23	3.55	.007	2	36	.64	4	.01	2	.78	.01	.08	2	6	5	-	-	-
R 39903	1	33	3	41	.1	25	10	1521	2.77	4	5	ND	1	183	1	2	2	6	9.64	.007	2	4	3.36	31	.01	8	.20	.01	.09	2	1	20	-	-	-
R 39904	1	9	2	15	.2	11	5	104	4.92	126	5	ND	1	6	1	12	2	2	.29	.004	2	4	.11	7	.01	2	.04	.01	.04	1	89	250	-	-	-
R 39905	1	119	5	53	.1	12	32	326	7.96	2	5	ND	1	138	1	2	2	322	3.35	.362	7	1	1.40	561	.20	11	2.56	.04	.60	1	2	5	3	6	
R 39906	1	27	3	56	.1	24	36	350	10.83	2	5	ND	1	33	1	2	2	379	1.52	.082	2	1	1.34	81	.21	2	1.14	.02	.13	1	1	5	27	11	
R 39907	1	8	6	15	.1	7	3	569	1.06	2	5	ND	1	749	1	2	2	2	18.11	.011	4	3	.46	22	.01	7	.31	.01	.04	1	1	5	-	-	-
R 39909	74	227	19	1339	1.6	126	8	177	5.83	109	6	ND	3	47	15	2	2	526	1.14	.051	4	127	.94	8	.12	2	.82	.02	.49	2	5	30	-	-	-
R 39910	1	12	4	21	.2	33	1	246	.94	3	5	ND	1	87	1	2	2	7	16.60	.034	5	6	6.47	105	.01	3	.27	.01	.11	7	8	560	-	-	-

X 1-1-88



Big Salmon

1234  
~~XXXXXX~~  
X  
Creek

North  
B.S.

ORHO Davis  
Seminal

	Au	Ag	Cu
1	.130	.19	.94
2	.296	.28	1.04
3	.345	.64	2.26
4	.296	.37	1.29



not valid for  
claim on assistance

went into Seminoe claim  
with King Hill by chopper  
and sampled trench put  
in by Noranda - they  
turned claim back - so  
King Hill may be interested

Samples Nos: 1-4

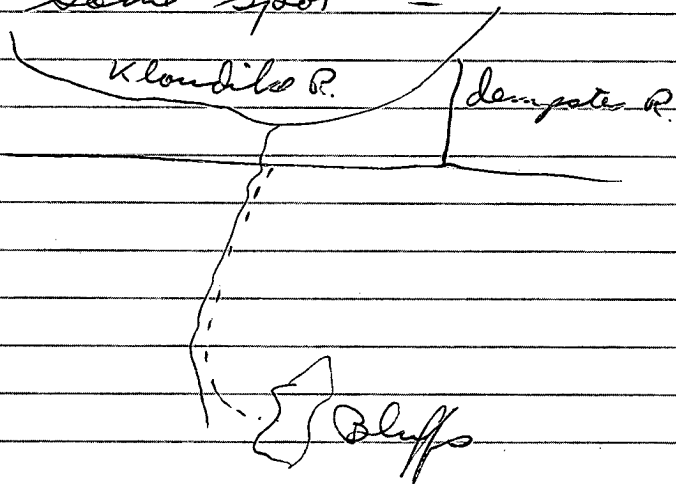
July<sup>20</sup> - Aug<sup>20</sup>

Flew to  
State

2

Aug 27 & 28

Prospecting, across from the Klondike River in the area of the Dempster cutoff - on bluffs up small tributary heading South West. Area is open and some good looking prospects - walked up creek about 0 miles - come back in at dark and stayed overnight at cabin at Rock Creek - spent 2<sup>nd</sup> day at same spot -

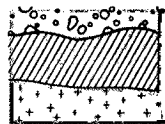


took one sample in to  
check for Gold  
(over)

O. Davis

Bondar-Clegg & Company Ltd.

136 Industrial Road  
Whitehorse, Yukon Territory Y1A 2V1  
Phone: (403) 667-6523  
Telex: 036-8-460



**BONDAR-CLEGG**

**Geochemical  
Lab Report**

REPORT: V88-05613.4

PROJECT: NONE GIVEN PAGE 1

SAMPLE NUMBER	ELEMENT UNITS	AU OPT
---------------	---------------	--------

R2 DAWSON		0.010
-----------	--	-------

Sept (3) 4, 5 Dawson area

went up River (Yukon) about twenty miles and checked for some places creeks that come into the Yukon from both sides -

Sept 3<sup>rd</sup> stopped at creek located before and across from Bell creek checked numerous places for indications of places - traced & checked main creek and several smaller side creeks - some colors and good indications - checked bluffs along creeks also for hard rock - stopped at mouth Garnet Creek for night - made camp next to old cabin -

Sept (4)

checked up Carnet Creek  
about  $\frac{1}{2}$  mile - not  
too much sign for colors  
in pan - still quite a  
bit of water coming down  
creek - checked sidocreek  
coming in from North.  
Some color in pan - but  
came back down and  
headed up Yukon River  
to Galena Creek - some  
interesting rocks along  
bank just before creek  
pulled into mouth and  
walked up stream -  
checked & panned as we  
went up - stayed to  
right at forks and  
took right fork. some  
color - but not exciting  
came back to boat and  
tried to find mouth  
of Indian River - but  
too shallow - ran  
around in both directions  
tried -

pulled into cove and made  
camp - walked up creek away  
but still couldn't find mouth  
of Indian River.

---

Sept 5<sup>th</sup>

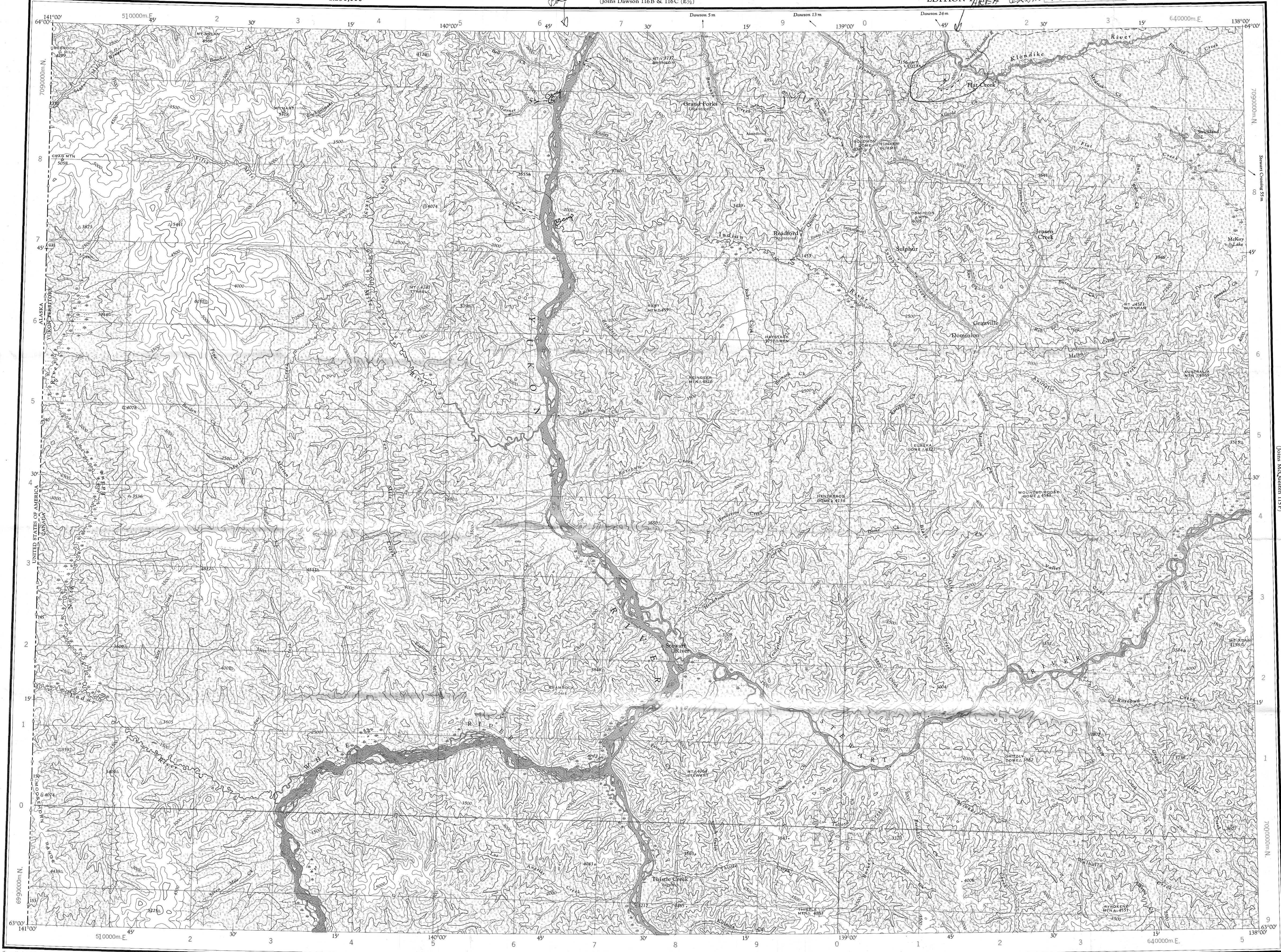
walked up small slough to  
bluffs about  $\frac{1}{4}$  mile back  
and checked rocks - not  
much showing - some quartz  
& one vein that sloped up  
from camp - fairly clear  
quartz and not much in  
mineral concentration -  
jacked up and headed back  
down stream.

arrived into Dawson  
after dark about 8:00 -  
getting cold & nippy when  
sun goes down on river.

Dave -

I had to leave  
in middle of season  
to attend an urgent  
family matter down  
in States - so  
missed about 30 days -  
was hoping to make it  
up next summer - but  
found out it was not possible  
after talking to you on  
phone - sorry about it  
thanks  
DLS





Compiled, 1961, by the SURVEYS AND MAPPING BRANCH, DEPARTMENT OF MINES AND TECHNICAL SURVEYS, from large scale maps and (west of 140°) from air photographs, taken in 1949. Printed 1963.

Copies may be obtained from the Map Distribution Office, Department of Mines and Technical Surveys, Ottawa.

Transverse Mercator Projection  
North American Datum 1927  
Contour Interval 500 feet  
Elevations in feet above Mean Sea Level  
Magnetic declination 31°28' East at centre of map 1963  
Annual change (decreasing) 3.5'

Some names on this map are not yet official. Corrections or additions are invited by the Surveys and Mapping Branch.

(Joins Snag 115J & 115K (E 1/2))  
**STEWART RIVER**  
YUKON TERRITORY

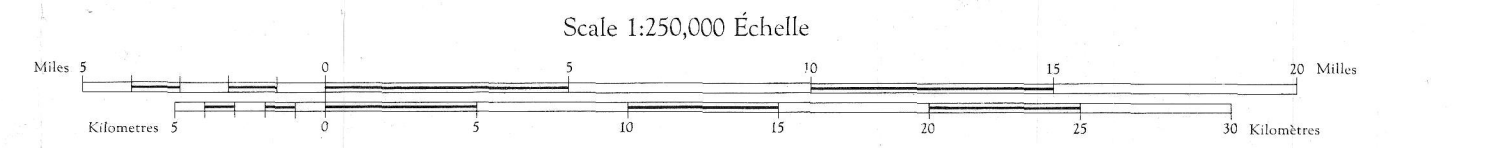
Certains noms inscrits sur cette carte ne sont pas encore officiels. La Direction des levés et de la cartographie saurait gré au public de lui signaler corrections et additions.

Projection Transverse de Mercator  
Réseau géodésique nord-américain unifié (1927)  
Équidistance des courbes: 500 pieds  
Élévations en pieds au-dessus du niveau moyen de la mer  
Déclinaison magnétique au centre de la feuille en 1963: 31°28' Est  
Variation annuelle (décroissante) 3.5'

Rédigée en 1961, par la DIRECTION DES LEVÉS ET DE LA CARTOGRAPHIE, MINISTÈRE DES MINES ET DES RELEVÉS TECHNIQUES, d'après les cartes à large échelle et l'ouest du 140° d'après les photographies aériennes prises en 1949. Imprimée en 1963.

Ces cartes sont en vente au Bureau de distribution des cartes, ministère des Mines et des Relevés techniques, Ottawa.

- Road, all weather.....Chemin, toute saison.....
- Wagon or winter road.....Chemin de terre ou d'hiver.....
- Trail or portage.....Sentier ou portage.....
- Town.....Ville.....
- Village or settlement.....Village ou hameau.....
- Post office.....Bureau de poste.....
- Building.....Bâtiment.....



PROVISIONAL MAP

CARTE PROVISOIRE

- Horizontal control point.....Point géodésique.....
- Boundary monument.....Borne frontalière.....
- Spot elevation, in feet.....Repère de nivellement en pieds.....
- Rapids; falls.....Rapides; chutes.....
- Marsh or swamp.....Marais ou marécage.....
- Depression contour.....Courbes de ouvette.....
- Surveyed line.....Ligne arpentée.....

TO GIVE A REFERENCE TO NEAREST 1000 METRES

GRID ZONE IDENTIFICATION	100 000 M. SQUARE IDENTIFICATION
7V	EA 6450

UNIFORM GRID REFERENCE  
100 000 METRES  
EA 6450  
If reporting beyond 10' in any direction, prefix Grid Zone Designation with 7VE6450

TEN THOUSAND METRE  
UNIVERSAL TRANSVERSE MERCATOR GRID  
ZONE 7  
115-O & N(E 1/2)  
EDITION 1

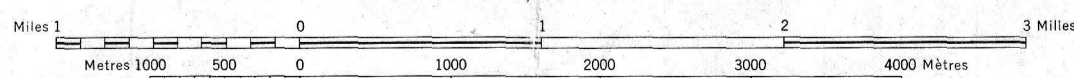


Produced and printed by the SURVEYS AND MAPPING BRANCH, DEPARTMENT OF MINES AND TECHNICAL SURVEYS, 1961, from air photographs taken in 1949 and 1955.

Établie et imprimée par la DIRECTION DES LEVÉS ET DE LA CARTOGRAPHIE, MINISTÈRE DES MINES ET DES RELEVÉS TECHNIQUES en 1961, d'après les photographies aériennes prises en 1949 et 1955.

**THISTLE CREEK**  
YUKON TERRITORY

SCALE 1:50,000 ÉCHELLE



CONTOUR INTERVAL 100 FEET  
Elevations in Feet above Mean Sea Level  
North American Datum 1927  
Transverse Mercator Projection

ÉQUIDISTANCE DES COURBES: 100 PIEDS  
Élévations en pieds au-dessus du niveau moyen de la mer  
Réseau géodésique nord-américain unifié (1927)  
Projection transverse de Mercator

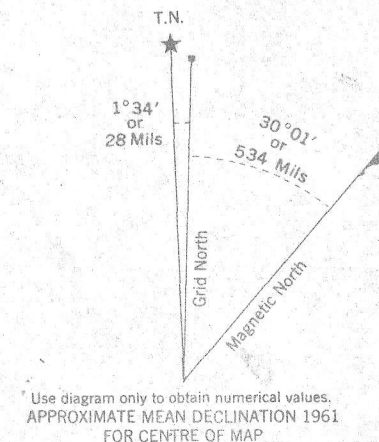
MAGNETIC DECLINATION 31°30' EAST  
AT CENTRE OF MAP 1961  
Annual change (decreasing) 3.6'

DECLINAISON MAGNÉTIQUE AU CENTRE  
DE LA FEUILLE EN 1961: 31°30' EST  
Variation annuelle (décroissante) 3.6'

The nomenclature on this map has not been submitted to the Canadian Board on Geographical Names and may be subject to revision. Information on names is invited by the Surveys and Mapping Branch.

La nomenclature de la présente carte n'a pas été soumise à la Commission canadienne des noms géographiques et, par conséquent, elle pourrait faire l'objet d'une révision. Tous renseignements sur les noms seront bien accueillis par la Direction des levés et de la cartographie.

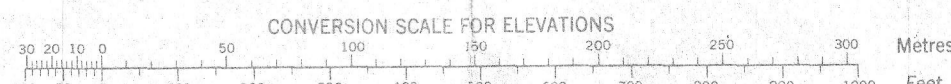
Building.....	Bâtiment.....	Barn.....	Grange.....
School.....	École.....	Post Office.....	Bureau de poste.....
Church.....	Église.....	Cemetery.....	Cimetière.....
Lighthouse.....	Phare.....	River with bridge.....	Rivière avec pont.....
Stream, intermittent or dry.....	Cours d'eau intermittent ou à sec.....	Lake, intermittent or dry.....	Lac intermittent ou à sec.....
Lake, permanent.....	Lac permanent.....	Marsh or Swamp.....	Marais ou marécage.....
Depression contours.....	Courbes de contre.....		



Use diagram only to obtain numerical values. APPROXIMATE MEAN DECLINATION 1961 FOR CENTRE OF MAP. Annual change decreasing 3.6'

GRID ZONE DESIGNATION 7V	100,000 M. SQUARE IDENTIFICATION 700 E A F A EV F V 60
TO GIVE A REFERENCE TO NEAREST 100 METRES EXAMPLE: POND EASTING: Read number on grid line immediately to left of point Estimate tenths of a space from this line eastward to point. NORTHING: Read number on grid line immediately above point Estimate tenths of a space from this line northward to point. MILITARY GRID REFERENCE: 952043 Nearest water-gaug reference 200,000 metres (about 63 miles)	

ONE THOUSAND METRE  
UNIVERSAL TRANSVERSE MERCATOR GRID  
ZONE 7

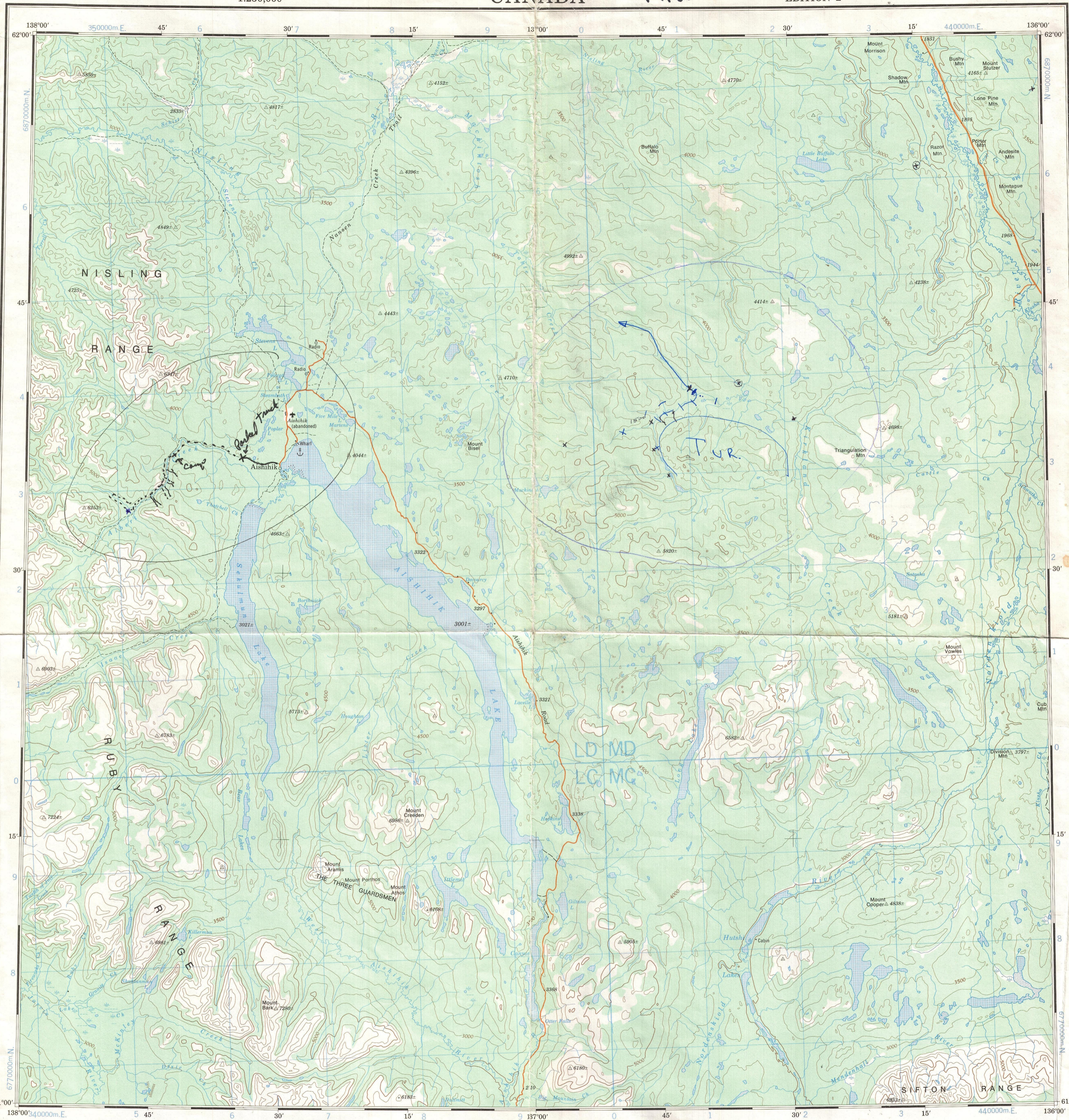


NATIONAL TOPOGRAPHIC SYSTEM  
SYSTÈME DE RÉFÉRENCE CARTOGRAPHIQUE NATIONAL

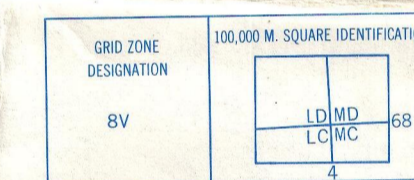
PAP88-016 115 O/3 EDITION 1

THISTLE CREEK

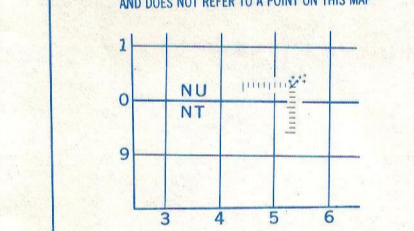
Military users, refer to this map as: **SERIES A 502 SÉRIE MAP 115H CARTE**  
 Références de la carte pour usage militaire: **EDITION 1 MCE ÉDITION**



TEN THOUSAND METRE  
 UNIVERSAL TRANSVERSE MERCATOR GRID  
 ZONE 8



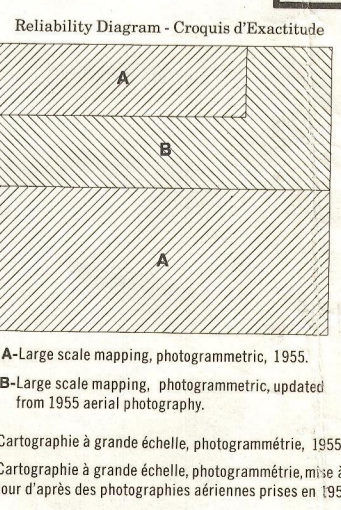
EXAMPLE OF METHOD USED TO GIVE A REFERENCE TO NEAREST 1000 METRES  
 THE FOLLOWING GRID REFERENCE IS A SAMPLE ONLY AND DOES NOT REFER TO A POINT ON THIS MAP



REFERENCE POINT ROCKS (as above)

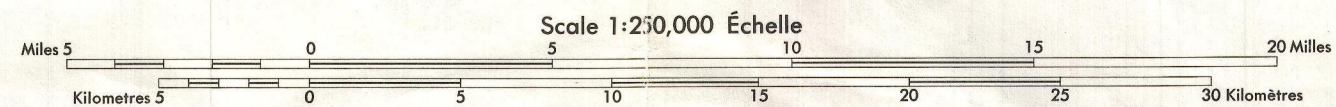
SQUARE: Read letters of 100,000 m. square NU  
 EASTING: Read number on grid line immediately to left of point  
 Estimate tenths of a square from this line eastward to point. 54  
 NORTHING: Read number on grid line immediately below point  
 Estimate tenths of a square from this line northward to point. 04

EXAMPLE MILITARY GRID REFERENCE NUS404  
 If reporting beyond 18° in any direction, prefix Grid Zone Designation as: 15VNU5404



Produced 1965 by the SURVEYS AND MAPPING BRANCH, DEPARTMENT OF ENERGY, MINES AND RESOURCES. Printed 1971.  
 Magnetic declination 1970 varies from 30°34' easterly at centre of west edge to 31°19' easterly at centre of east edge. Mean annual change 3.7' westerly.

**AISHIHIK LAKE**  
 YUKON TERRITORY



Roads: loose or stabilized surface, all weather..... 2 lanes or more ..... less than 2 lanes  
 loose surface, dry weather.....  
 cart track.....  
 trail or portage.....

FOR COMPLETE REFERENCE SEE REVERSE SIDE

CONTOUR INTERVAL 500 FEET  
 Elevations in feet above Mean Sea Level  
 North American Datum 1927  
 Transverse Mercator Projection

ÉQUIDISTANCE DES COURBES 500 PIEDS  
 Élévations en pieds au-dessus du niveau moyen de la mer  
 Système de référence géodésique nord-américain, 1927  
 Projection Transverse de Mercator

Établi en 1968 par la DIRECTION DES LEVÉS ET DE LA CARTOGRAPHIE, MINISTÈRE DE L'ÉNERGIE, DES MINES ET DES RESSOURCES. Imprimé en 1971.  
 La déclinaison magnétique pour 1970 varie de 30°34' Est au centre de la limite Ouest à 31°19' Est au centre de la limite Est. Variation moyenne annuelle 3.7' Ouest.

Routes: gravier aggloméré, toute saison..... 2 voies ou plus ..... moins de 2 voies  
 de gravier période sèche.....  
 de terre.....  
 sentier ou portage.....

POUR UNE LISTE COMPLÈTE DES SIGNES, VOIR AU VERSO

