

*Prospecting Program*

Prospector's Assistance  
Program

Otto Hanson

October 11, 1989

1 Prospecting Program  
28 & 29/06/89. - 20 hrs

Pick up food & equipment  
for Limestone Creek Base  
Camp etc

2 Prospecting Program

07/07/89 - 14 hrs

Hauling Supplies to Linc  
Creek, by Aircraft fixed

Airplane - 2 trips - 155.00  
145.00

Truck 4x4 Rent.

### 3. Prospecting Program

02/07/89 - 18 hrs

Checking inventory +  
Repairs to equipment etc  
Reconicent trip & Lake  
Creek area to check out  
road access to upper  
Valley etc - 600 AM  
- 12:00 PM - 18 hrs approx  
access has been  
mined + area is  
heavily wooded +  
will need more trips  
to find a good trail  
to the higher area  
to be prospected  
\* approx mileage with 4x4  
Vehicle - 6 Miles 9.6 Kl.

Truck 4x4 Rent.

### Prospecting Program

03/07/89 - 10 hrs

Went to LV to check  
on access to higher  
area. The road is  
good to about 1/2 mi  
up the claims +  
then brush but not  
to heavy maybe  
able to make it  
without a much  
trouble  
airport to LV back  
about 12 miles

Truck 4x4 Rent.

### 4. Prospecting Program

04/10/89 - 14 hrs

Back to LV to pick  
up some supplies  
for Lenny +  
check the road  
access to St. Germain  
& to Mendocena  
access is to  
St. Germain high  
water + to Mendocena  
is OK. 15 miles

Truck 4x4 Rent.

5 Prospecting Program  
05/07/89 - 15 hrs  
Work at Base Camp  
airstrip getting inventory  
& supplies ready for  
a trip up top in a  
day or so. Over to  
Contenera & get other  
stuff needed for the  
\*trip 8 miles -  
also established a camp  
site at Contenera for  
going into the upper  
area.  
There is a old channel  
that the Menes was  
mountain behind the  
Contenera Cabin  
that I believe goes  
north to little Violet  
& also south to Salmon  
Creek & maybe over to  
Harter & I want to  
concentrate on that for  
now.  
truck Rent 4x4 -

12 hrs Prospecting Program  
6 06/07/89. Base camp  
airport  
Got the A.T.V. working  
& got to get the Paper  
Work done on that one  
Went to Contenera  
& took up some supplies  
& stayed over till  
approx 4 miles -

truck Rent 4x4.

7 Prospecting Program  
07/07/89 - 12 hrs  
Back to base of the airport  
& check the testing box  
& pump etc. Study  
the terraces between  
Contenera & airstrip  
which requires more  
sluicing of the channel  
material. A quartz  
outcropping at the North  
end of the airstrip  
actually goes North  
and follows the East  
side of the river over  
to the old channel  
at Contenera & then  
goes under overburden  
to little Violet.  
back to Contenera Camp  
8 miles.

4x4 truck rent.

8 Prospecting Program  
08/07/89 - 12 hrs  
Went from Conteneva  
to LV with Lenny to  
St Germaine. LV back  
to Conteneva & established  
a camp area at  
LV for future prop.  
Conteneva & airstrip to  
pick up supplies etc  
to take over & maintain  
+ Diner with Bud + Rod.  
approx 22 miles -

4x4 Rental -

9 Prospecting Program  
09/02/89 - 12 hrs  
Went to airstrip this  
morn + got the ATV  
going for the trip to  
Jungstone Creek. We  
went up past the village  
but the road is bad  
so we came back to  
the base camp try  
again. Call. - 6 miles  
Made a trip to LV  
+ picked up Lenny +  
checked the camp +  
then back to camp at  
Conteneva. Picked up  
some maps at airport  
base camp for study  
- total 20 miles

4x4 - Rental -  
ATV - Rental -

10 Prospecting Program  
10/07/89 - 15 hrs  
Went to airport + to hri<sup>exp</sup>  
to phone the phone unit  
working so back to  
Base Camp at airport  
+ then over to Conteneva  
Camp. Worked on some  
testing equipment +  
supplies to go up to  
the upper area.  
Bud is going up to  
the same area to stake  
some claims that are  
lapping + is going  
to flag a trail for  
me. It will save  
me a few hrs on  
the way back by  
following his trail  
as I'm going up the  
other side 12 miles

4x4 Rental

11 Prospecting Program  
11/07/89 - 14 hrs  
OK - went up Conteneva  
Creek by the road to  
Bills Camp + done some  
servations as to where  
the best access is  
to go over to the upper  
area

There are quite a few  
canyons on the east  
bank between Conteneva  
& the area east of the  
airstrip (See airphoto)  
& map for details  
Found my camera today  
So I'll be able to take  
some pictures →  
from Conteneva to  
Base Camp at airstrip  
to do some more  
work on the testing  
equipment + program  
study of samples etc  
Back to Camp at  
Conteneva. 26 miles  
4x4 Rental →  
(Other equip. Rental)  
See details →

12 Prospecting Program  
12/07/89 - 12 hrs.  
Prospected on the  
claims that were  
bypassed by the air-  
strip along the  
Salmon River  
Checking exploration  
work done previous  
location of pits + test  
areas are recorded  
as assessment work  
See Maps + Photos.  
From Base camp at  
Conteneva to Base  
Camp at airstrip  
approx 10 miles

4x4 Rental -

13 Prospecting Program  
13/07/89 - 12 hrs.  
from Camp Conteneva  
to base Camp at airstrip.  
Checked out test box  
and made some  
changes going to  
use expanded Metal  
and instead of riffles  
& see if I should  
better recovery of  
fine sands etc.  
Checked the under-  
ground channel at  
site by the junction  
of the old road +  
the new Run Road  
& it has just about  
dried up may have  
to use Salmon R.  
water for testing?  
only 12 M. -

4x4 Rental -

14 Prospecting Program  
14/07/89 - 10 hrs  
Worked on sluice testing  
equipment + hose for  
pumps etc. Over to  
L.V. camp for parts  
+ back to base camp  
at airstrip awaiting  
paper work etc  
12 miles

15 Prospecting Program  
15/07/89 - 10-11 hrs  
Over to L.V. and pick  
up parts for the pump  
and nuts + bolts etc  
just about got every  
thing ready to start  
up into the next  
level of conteneva  
& lake creek area  
Rained + the water  
came up a little  
but it's still low  
may go to town with  
in a day or so for  
supplies + get the  
flight bills in to  
D.D. if possible

16 Prospecting Program  
16/07/89 - 12 hrs  
Worked at Base camp  
on equipment for  
testing + then took  
a trip over to L.V.  
The camp there is  
being moved to Gonderus  
but I will still have  
a thin camp there  
to go up to the higher  
area on the next stage  
no sign of Bud yet  
if he comes out I'll  
Hickey go in for supplies  
no word from Lesley but  
the D.H.s at Gonderus  
so I may leave  
today + start the  
exploration on living  
to I'll have to stake some  
claims on the Gonderus

4x4 Rental



17 Prospecting Program  
17/07/89 - 12 hrs

Went to Martin Creek  
air strip to look at the  
Df for the exploration  
program & then prospe.  
on the way back  
to Limestone the  
area from Martin  
to Limestone is flatter  
so I didn't find  
much of interest  
except that they did  
a drilling program on  
it. The area between  
the Salmon & Limestone  
Valley is open ground  
in the area & maybe  
worth checking later.  
Went to L.V. & checked  
on the moving program  
& then back to containers  
& Base Camp at airstrip  
(Limestone)  
Approx 10 miles

18 Prospecting Program  
27/07/89

OK seen to WA & got  
supplies & came back  
on the 24/07/89 Spent  
one day getting the  
Df over to Base Camp  
at Limestone airstrip  
washed up equipment  
and today I went over  
to Little Violet to  
check on the camp  
there as the contract  
was in there moved  
over to Gonders &  
I may not use that  
camp till later.  
28, 29, 30, 31, 1, 2, 3, 4, 5, 6  
Went to town on the 6  
for supplies etc.

Airplane - S.C.H. # 75.00

19

Prospecting Program  
14, 18, 16, # 1, 2 hrs  
Went to WA on the 6th  
for supplies etc. Came  
back on the 14 & stayed  
at base camp, getting  
ready for an explor-  
ation program on  
the Eagle Nest pass  
(Sheels Gulch)  
going to prospect from  
Lake Creek to 4 mile  
area.

Made one trip with  
444 lodge on the 16/08/89  
in & out 30 miles

14 - aircraft - F.C. # 145.00

Truck Rent -

20 Prospecting Program  
17/08/89 - 12 hrs

Getting Equip Ready to  
go to upper Lake Ck  
Summitt Contenera  
& on to Livingston Ck  
at 4 mile etc.

Made a trip to L.V.  
to pick up equip  
needed, from base  
camp to Contenera  
to L.V. & back to  
base camp - 20 miles

Truck Rental -

21 Prospecting Program  
18/08/89 - 15 hrs

Trip over to Contenera  
Camp to pick up supplies  
for trip to upper Liv-  
ingstone. Back to base  
camp & up to the head  
waters of Lake Summitt  
Contenera & Eagle Pass.  
arrived 11.30 PM

Staked 2 mile prop lease  
on Eagle Nest prop &  
did a bit of testing on the  
way - No significant showing  
inlay approx 30 miles ✓

truck rental.

22 Prospecting Program  
19/08/89. - 8 hrs.

Went to Eagle Nest  
claim & checked supply  
left there last yr  
The tarp sheet is  
in a shambles &  
everything is ruined  
had to check that  
later. Prospected a bit  
on the 2 mile lease  
& found some real deep  
underground channels.  
The water is running  
about 3-4 ft below the  
surface & is pushing sea  
gravel up but no  
gold showing some  
black sand & small  
local rocks.

## 24 Prospecting Program

27/08/89

OK the prospecting is going slow as I've only been doing some prospecting along with doing equipment for the Exploration Program on Eagle West.

I've staked the 2<sup>nd</sup> lease on Eagle West & intend to stake some more claims over on upper Continever later all the info that I have had has not been compiled as yet but will be in with the final part in the West month when I'm also working on the Eagle West Prop Exploration Program.  
OK. More update  
truck rental -  
approx - 20 miles Trip out to Cont & L.V. & back.

Prospecting Program  
28, 29, 30, 31/08/89  
Trip to W.H. to get  
Supplies & do paper  
work on prospecting  
Program & Exploration  
Program & saved use  
Program for a road  
to Eagle West site,

## 12 Exploration Program

18/08/89 - 10 hrs

Got the Cat + supplies loaded  
& started to Eagle Nest  
Pup arrived at upper  
Pug area approx 8:30  
Left equipment + went  
on the prospecting to take  
2 mile lease then back  
in equip + to bed.

19/08/89 - 8 hrs.

Moved the equipment  
part way down Eagle N.  
Pup but the valley is  
tight going so didn't  
get right to the claims  
Had trouble with the  
tracks + had to repair  
them + lighten them  
up.

Check for more notes  
for exploration on the  
following days for  
Eagle Nest

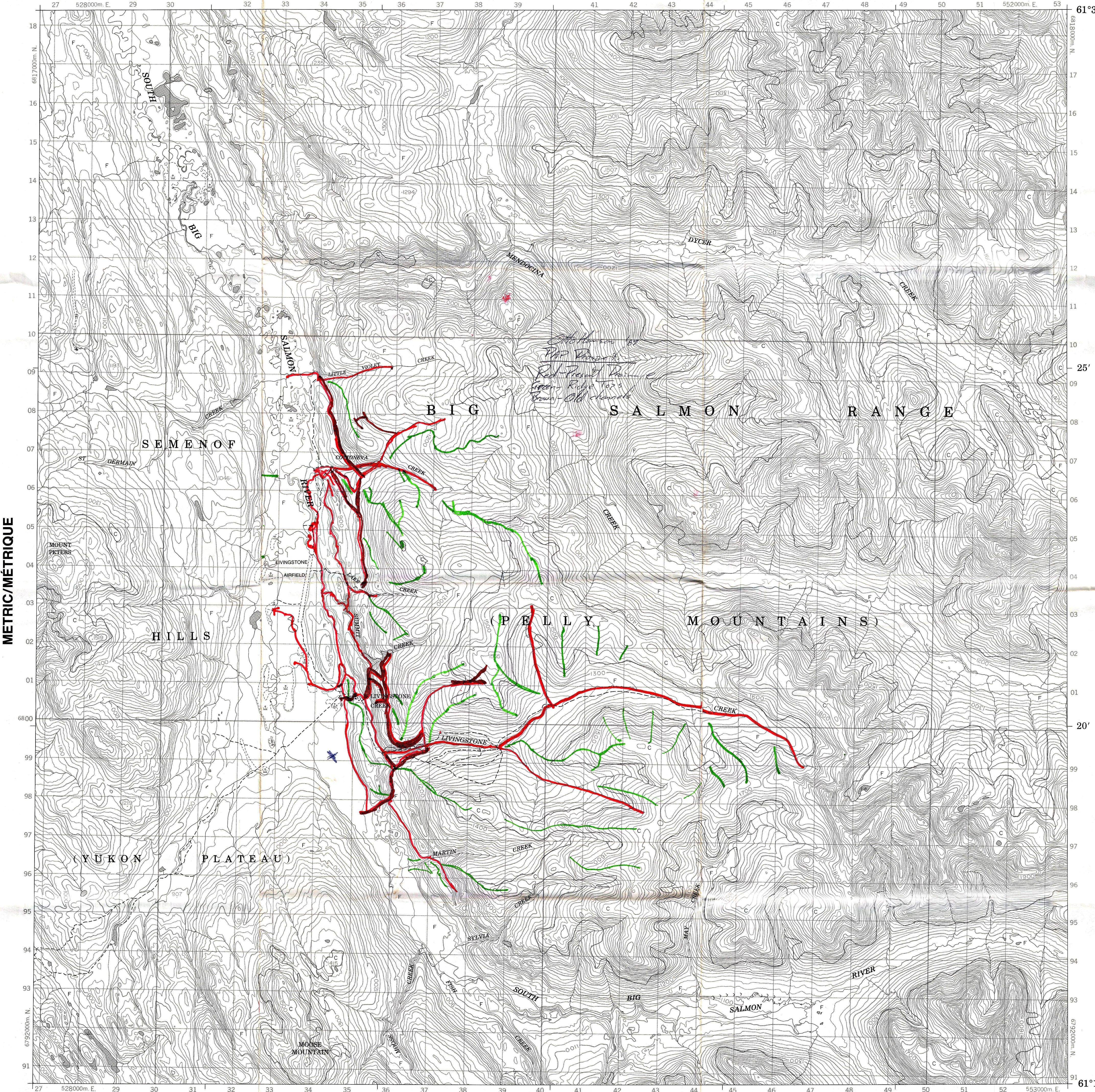
## Exploration Program

27/08/89

Mount kept much for  
notes so far as it  
has been at a stand  
still I was stuck for  
3 days  
& finally got everything  
out + took the prospect  
lease near where I  
intend to start digging  
& trenching so far the  
used the D & D +  
4x4 truck to get the  
supplies etc up to  
go to work. from now  
on it will mostly  
be cat + truck travel  
to get the tract made  
more later

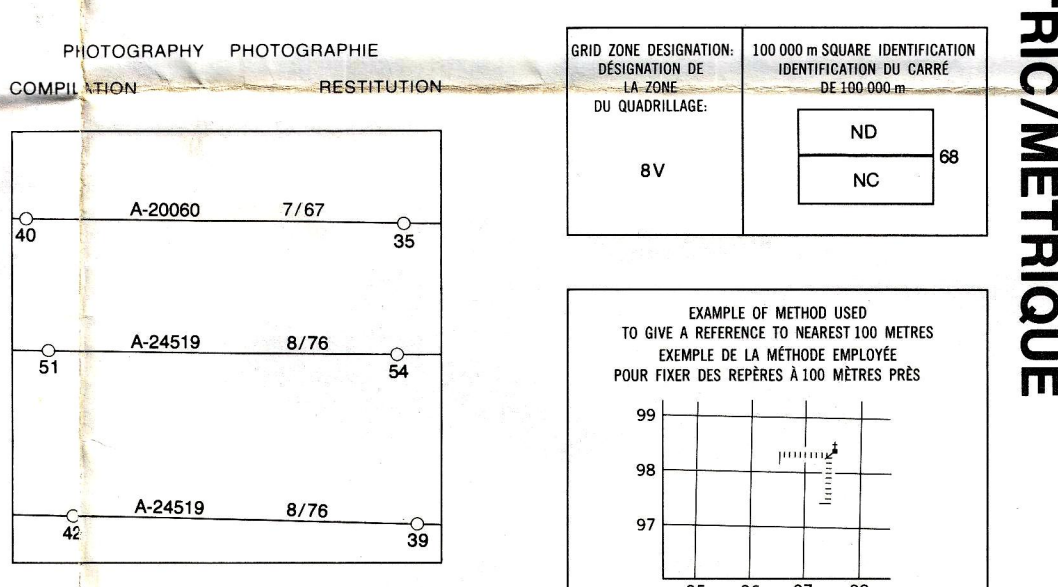
truck Rental -

Military users, refer to this map as: MAP 105 E/8 CARTE Réf. de cette carte pour usage militaire: ÉDITION 1 MCE ÉDITION



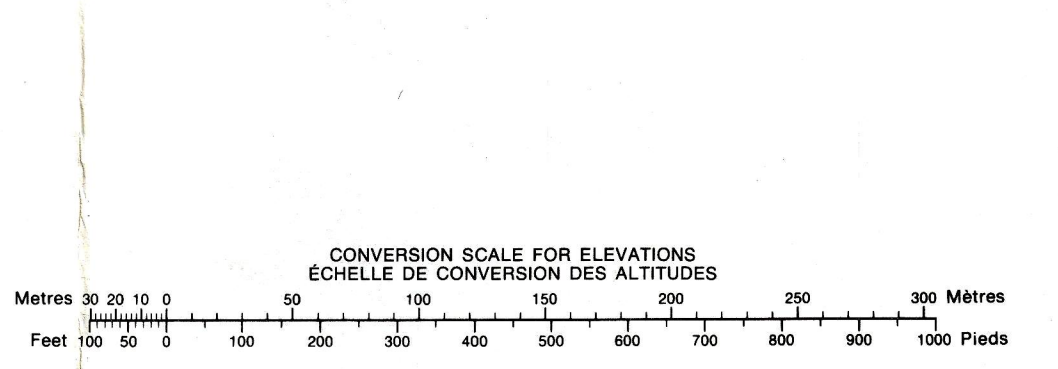
LEGEND - LÉGENDE. Table listing symbols for roads, railways, bridges, buildings, and terrain features with their corresponding French and English descriptions.

GLOSSARY - GLOSSAIRE. AIRFIELD: TERRAIN D'AVIATION



EXAMPLE OF METHOD USED TO GIVE A REFERENCE TO NEAREST 100 METRES. Includes instructions for reading the grid and an example grid showing coordinates like 99, 98, 97 and 95, 96, 97, 98.

ONE THOUSAND METRE UNIVERSAL TRANSVERSE MERCATOR GRID ZONE 8. Includes magnetic bearing information: The 1984 MAGNETIC BEARING is 29° 51' (531 mbs) EAST OF GRID NORTH.



PRODUCED BY THE SURVEYS AND MAPPING BRANCH, DEPARTMENT OF ENERGY, MINES AND RESOURCES. OTTAWA, PUBLISHED IN 1984.

ELEVATIONS IN METRES ABOVE MEAN SEA LEVEL. CONTOUR INTERVAL ..... 20 METRES. NORTH AMERICAN DATUM 1927.

LIVINGSTONE CREEK YUKON TERRITORY TERRITOIRE DU YUKON. Scale 1:50 000 Échelle. Includes a scale bar in meters and miles.

ALTITUDES EN MÈTRES. ÉQUIDISTANCE DES COURBES ..... 20 MÈTRES. SYSTEME DE RÉFÉRENCE GÉODÉSIQUE NORD-AMÉRICAIN 1927.

ÉTABLI PAR LA DIRECTION DES LÈVES ET DE LA CARTOGRAPHIE, MINISTÈRE DE L'ÉNERGIE, DES MINES ET DES RESSOURCES, OTTAWA, PUBLIÉE EN 1984.

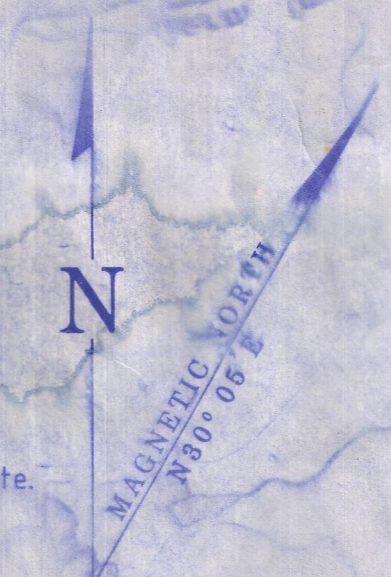
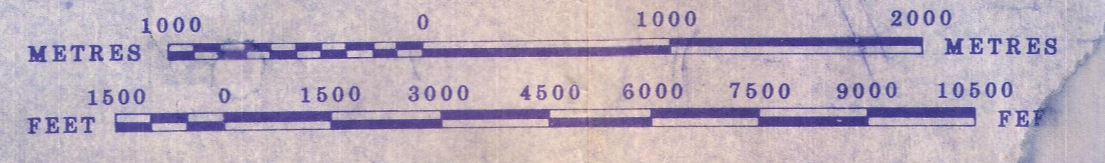
LIVINGSTONE CREEK 105 E/8 ÉDITION 1 ÉDITION. Energy, Mines and Resources Canada / Énergie, Mines et Ressources Canada.

# 105E-8 PLACER

LATITUDE 61° 15' TO 61° 30'  
 LONGITUDE 134° 00' TO 134° 30'

ISSUED UNDER THE AUTHORITY OF THE MINISTER OF INDIAN AFFAIRS AND NORTHERN DEVELOPMENT

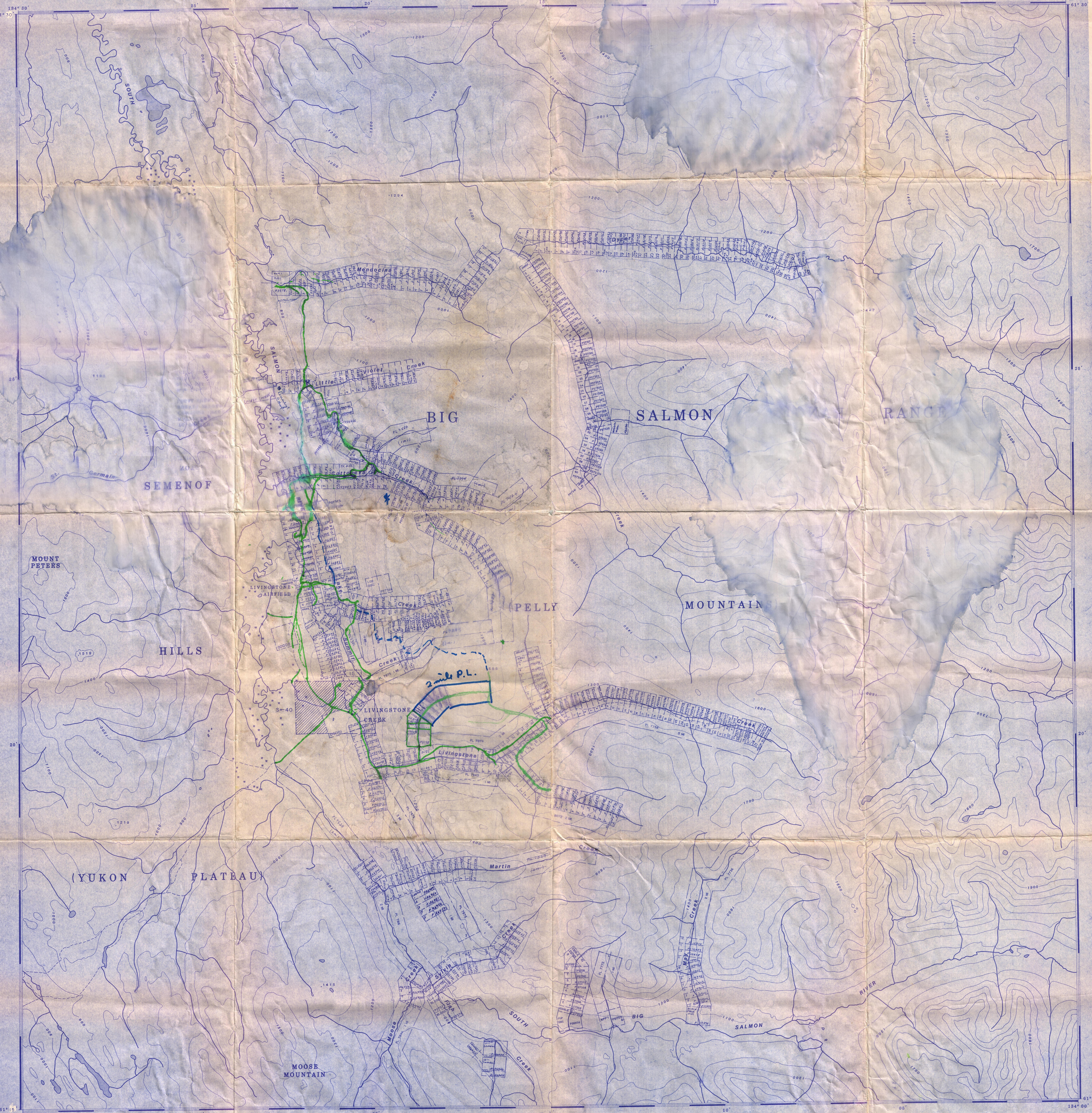
SCALE 1:30,000



**NOTE:**  
 THIS MAP IS ISSUED AS A PRELIMINARY GUIDE FOR WHICH THE DEPARTMENT OF INDIAN AFFAIRS AND NORTHERN DEVELOPMENT WILL ACCEPT NO RESPONSIBILITY FOR ANY ERRORS, INACCURACIES OR OMISSIONS THAT MAY OCCUR.  
 TOPOGRAPHY IS FROM 1:50,000 NATIONAL MAP SERIES. CONTOUR INTERVAL 50 METRES. SURFACE ELEVATIONS COMPILED FROM SPOT HEIGHTS, BY PLANNING SERVICES.  
 Note: Entry on certificate withdrawn from staking by P.L. 1928-1011, 1928-1012 to facilitate the settlement of surface rights without prejudice to existing surface rights.  
 Note: For quartz claims see 105E-8

105E-10	105E-9	105F-12
105E-7	105E-8	105F-6
105E-2	105E-1	105F-4

WHITEHORSE 12 SEPTEMBER 86

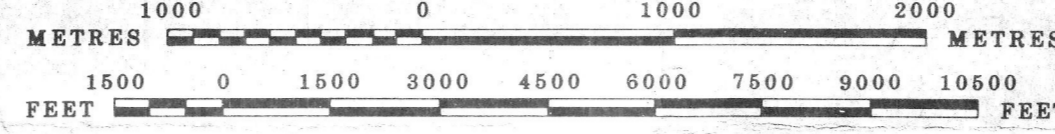


105E-8  
 QUARTZ

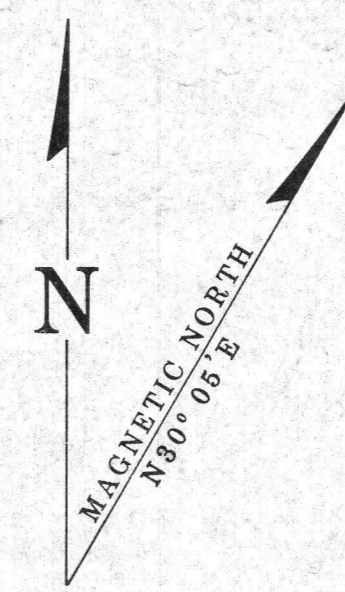
LATITUDE 61° 15' TO 61° 30'  
 LONGITUDE 134° 00' TO 134° 30'

ISSUED UNDER THE AUTHORITY OF THE MINISTER  
 OF INDIAN AFFAIRS AND NORTHERN DEVELOPMENT

SCALE 1:30,000



Indian Grave Site



NOTE:  
 THIS MAP IS ISSUED AS A PRELIMINARY GUIDE FOR WHICH THE DEPARTMENT OF INDIAN AFFAIRS AND NORTHERN DEVELOPMENT WILL ACCEPT NO RESPONSIBILITY FOR ANY ERRORS, INACCURACIES OR OMISSIONS WHATSOEVER.  
 TOPOGRAPHY COMPILED FROM 1:50,000 NATIONAL TOPOGRAPHIC SERIES.  
 CONTOUR INTERVAL 100 METRES.  
 SURVEY INFORMATION COMPILED FROM LEGAL SURVEYS, BY DRAFTING SERVICES.

Note: Entry on certain Lands is withdrawn from staking by P.C. 1988-1011 & P.C. 1988-1025 to facilitate the Settlement of Native Land Claims without prejudice to Existing Surface and Subsurface Rights.

105E-10	105E-9	105E-12
105E-7	105E-8	105E-5
105E-2	105E-1	105E-4

Note: For placer claims see 105E-8 placer

