

50'

400

Deep Canyon

1200

1300

Flat

Winter road to red mountain

Creek

Quartz bog

new cut trail

Sidney

PL 8318

1 MI

1 MI

PL 8352

my place lease

Lee's Place

BIG

1200

1 MILE

PL 7878

2 MI

PL 7874

1 MILE

PL 7877

Twin

PELLY

Map 105-C-14

P27587

P27586

P27585

P27584

P27583

P27582

P27581

P27580

P27579

P27578

P27577

P27576

P27575

P27574

P27573

P27572

P27571

P27570

14

13

12

11

KG 10

9

8

7

6

5

4

3

2

1

KG 1

OTTO

TONYA

JENN

14

13

12

11

KG 10

9

8

7

6

5

4

3

2

1

KG 1

OTTO

TONYA

JENN

006

1000

YB2179

YB2177

3 MILE

YB2178

YB2176

INGATEE

base camp

1984
Clara's
St. Ked

PATSY P32228

3 MILE

PL 7650

1200

SALT

(200 + II) June 12

We load up truck with supplies and the Pug on Ken's trailer and head out to Iron Cr. At approx. mi 5 on the Sidney Cr. road Karl Gruber is setting up a 30 man camp, waiting for the arrival of approx. 15 Malaysians and a becker drill. They will be testing the Sidney Cr. Valley. We move into our base camp, cabin approx 1 mile up Iron Cr.



Base camp Iron Cr.

June 13 and 14

Clean up camp and get ready for trip up Sidney Cr.



I'm unloading supplies at base camp.



My new 4x4 about 1 mile from base camp
Last mile ATV trail only

June 15

We go up Sidney Cr. road with the Pug up to where the road crosses Sidney Cr. we then hike up, on the right hand side of Sidney Cr. to the first small lake. We look over the unnamed tributary on the right hand side of Sidney Cr. approx. 1000 feet down stream from the lake. We have been told of some pretty good gold found on this creek by John Tillotson, who has prospected in this area for a number of years. We find the remain of old cabins, pole ruffles etc. along the side of this creek. I stake a one mile prospecting lease on the lower end of the creek.

PL 83 18'

We go back to base Camp.



remains of log wall tent frame



rock fireplace and enamel pot
over grown with moss



Old pole rifles decaying and covered
with moss

June 16

We drive to Whitehorse to pick up more supplies and to register lease. We then drive out to Tagish to meet our brother Andy who is landing his float plane at the Tagish river below bridge. We stay overnite at Tagish



Andy with his float plane Tagish river.

June 17

We fuel up the plane, then we fly up to Sidney Cr. to look over the area. We then fly to Little Teslin Lake, we leave the plane there and drive back to Iron Creek.

Six americans incl. Soey Grants son are camped on our lower claim on Iron Cr. They are from Arizona. They plan to work on the creek with a suction dredge.



Base camp
on Iron Cr.



Karl Brubers
Camp



Andy's plane
at Little ~~AT~~
Teslin Lake.

June 18

Andy and I do some testing on Iron Cr below lower falls with $2\frac{1}{2}$ " suction nozzle we recover apr. $\frac{1}{2}$ penny weight of gold in about 2 hrs. Andy stakes the claim and we drive back to Whitehorse. We camp overnight at the shop in M'Crac.



I'm trying out my new $2\frac{1}{2}$ " suction nozzle I'm very satisfied with it's performance.

June 19

Andy registers his claim, I bring a sample of black sand from Iron Cr to Assayers (assay for gold Platinum + Palladium). I buy a heavy duty hand winch for winching boulder, etc. I drive Andy back to his plane, he leaves for Smithers, I go back to Iron Cr.

June 20

We cut a road from the trail down to Iron Cr., north of base camp. I haul a pump, small sluice box and some hoses, with the Pug up Iron Cr. for Leo to work with. I get ready for a trip up Sidney Cr. Onill arrives at Karl Crubers' camp, they start to drill near the mouth of Iron Cr.

June 21

I drive Pug up Sidney Cr. valley as far as I can, about 1 1/2 miles from my lease. I spend the after noon looking for the best game trail to follow, for packing supplies up to the lease. I flag and blaze the trail, then return to base camp. It's sunny and warm all day. The road is very dusty.

June 22

I work around camp, kill a rabbit to eat, repair Pug, change a tire.

Sunny + warm

June 23

We haul a load of supplies as far as we can go with the Pug. Leo and I walk the rest of the way to the lease with the chainsaw and some supplies. We cut dead fall off the trail. We did a little panning on the bottom end of the lease we set a few fine ^{colors} ~~containers~~. We go back to base camp.

Sunny and warm light high clouds towards eve.

June 24

I go up Sidney Cr with Pug, I pack 2 loads up to lease (pump hoses sluice box, bar, shovel wades etc) I hike up Sidney Cr on right hand side up to first stream past second lake. I look at outcrops along the way, take a few samples. Game trails in this area are hard to follow. I go back to base camp.



June 25

I relax a little, went fishing below falls on iron cr. Talked to Malaysian prospector and his assistant. Americans camped on our lower claim are still dredging below our lower claim on iron cr.

mostly sunny cloudy, small shower

June 26

Fix road to base camp. it was torn up when Americans tried to drive up iron cr. with their 4x4 pickup. I fix my small chainsaw and run the generator for a few hrs. to charge the battery for the radio tel. I did my laundry

Mostly cloudy no rain

June 27

I go up to lease and set up 2½" suction nozzle. I make a pit approx. 1 m wide by 3 m long by 1 m deep (Pit #2)

Pit is in streambed approx. 200' up from post #1

I don't find any gold, but I never hit bedrock or any hard layers. I move the equipment up to top of canyon and camp there overnite.

Mostly sunny and warm a few clouds no rain.

June 28

I took test pans from in the creek at the head of the canyon to approx. 500' upstream, I find only a few colors. It's sunny and warm until approx. 3:30 PM, a dark cloud approaches from the east, there is lots of thunder and lightning. I leave for base camp it starts to rain as I reach the Pass. I find Bob Keese and his son Karl camped at Twin Cr. they plan on staying for a while and prospect in the area. Bob shows me his map that is supposed to show where the gold is (satellite imagery or something like that) according to it there are some hot spots in the area. I continue towards base camp, I stop in to see how the Americans are doing with their dredging, they now have a Karl Crubers 690 excavator to dig a pit next to the creek. Over a glass of punch they tell me that they are getting some gold, but it is quite fine. They ask me how much we want for our iron cr claims, I give them a price and tell them that it is neg. they will be talking to Jay Grant tonight on the telephone. I go on up to base camp, it has stopped raining and it turns colder.

June 29

We are running low on grub, so we go to Whitehorse. On the way we stop in to see if anyone needs anything at Karl Crubers camp. They show us how the Malaysians pan the drill samples with large wooden bowls. It was quite interesting. They give us a list of things they would like from town. They (Karl + Jenny) ask if Leo would drive them camera to Whitehorse for them so Karl Leo agrees and we go on to Whitehorse. We pick up the mail, my \$1000⁰⁰ advance is in the mail. I stop in to see David Downing to see if I can reallocate the money I had proposed to use for helicopter rental. I want to use it for other prospecting services and supplies. Dave says no problem, just keep receipts. We pick up some grub etc. then we have supper at Miras restaurant with Ken. We leave for Iron Cr and arrive at Karl's camp around 12:15, we drop off his supplies and continue onto base camp.

Sunny + hot heavy thunder showers
late evening

June 30

Leo and I cut firewood for our base camp. We walk up Iron Cr to have a look at a fraction of open ground, just above Leo's claim. After supper we walk down to our lower camp on Iron Cr. to pick up a few things, we find that the americans that were camping on our lower claim have packed up and left.

Mostly sunny & warm a few thunder showers in the area.

July 1

We go up sidney Cr and up to my lease, we find that Karl Gruber has pushed a cat trail to within $\frac{1}{2}$ mile of the lease, following my flogged trail, he stopped at the "death bog". We pan out a few pans of gravel at different spots on the lease, we don't find much. On our way back we walk across to the next stream that flows into sidney Cr. (east of my lease) we pan a little and recover only some black sand. We see Bob Heese at twin Cr. he tells us that someone had hiked in to see us. When we arrive at Iron Cr we find Uic Sokalski, his wife Pat and son Michael. They have come to visit and to see the country. They invite us to stay for supper with them, it shure was good (home made moose sausage as well as home grown carrots, cucumbers, lettuce, radishes etc.) We do a little panning below the falls to show Michul how it's done. As usual each pan yields 4 or 5 nice flakes. We sit around and talk until about 10:00 PM, then we head back to our camp. they camp at Ken's camp site.

Sunny and warm one small shower.

July 2

We show Vic and family the old workings on Iron cr and the 200' fraction of open ground, between Leo's claim and the Fordyce 3 mile lease. Vic decides to stake it, we give him a hand. We go back to our base camp cabin for lunch. Bob Keese and son Karl show up on their 4 wheeler, they give me a pry bar that they thought I had lost on the trail, I thank them anyway and make a pot of coffee. They tell us that they are leaving the country and that they were going down to prospect in the Dease lake area of B.C. They had found the upper Sidney cr valley too difficult to travel. They are going to camp at our lower claim and leave in the morning.

We walk down to lower falls to try show Michael how to catch some grayling, but they weren't biting, it was very bright sunshine and very hot. We go back to our base camp. Vic is going to camp overnight, then leave in the morning.

Walking on the upper trail with Pat & Vic we saw 2 martens, they were chasing each other and just about ran into us.

Sunny and hot all day

July 3

We go up Sidney Cr. Valley and then up the mountain on the old winter road to Red Mountain we leave the Pug at the first small washout, we could of gone further with it but I didn't bring enough fuel along.



I pan some gravels from the stream in the washout there are a few fine colors. We hike up the winter road a couple more miles until it starts to drop into the next valley. It looks as if you could go all the way with Pug or other APU if you have enough fuel that is. We hike back to the Pug, have a snack then we walk across to Twin Cr. it's an easy hike on a ridge with very few trees and no brush. It's getting late so we head back for camp. At Twin Cr we find Jenny Cruber washing the dust from her eyes, she has just driven up the road (which is very dry and dusty) with them bombardier.



Leo Looking north over Sidney Cr. valley
from up on the winter road into red mountain

they plan on leaving it up at the end
of the trail. We continue on to base camp.

Sunny and hot
not many bugs use no bug dope today

July 4

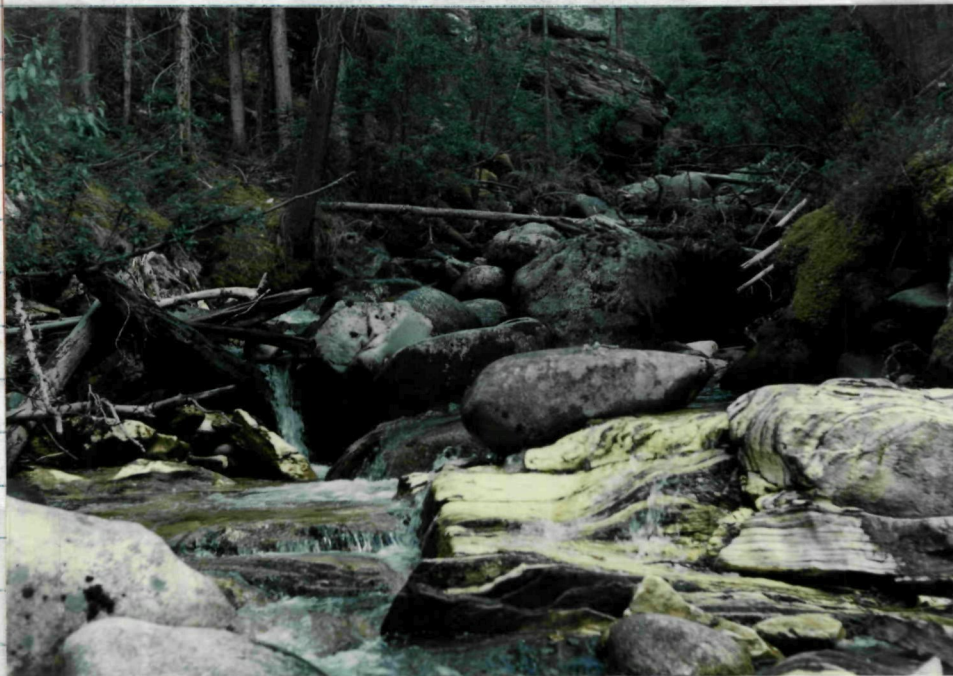
I did my laundry and some other chores around camp. I give Leo a hand to do a clean up, where he's working on his 'bear' claim. he doesn't get much gold. Leo decides to ~~go~~ work the rocker box below the lower falls

Sunny with a few high clouds no rain hot
not very many bugs

July 5

I go up to my lease, Leo stays to work on Iron cr. I start a pit (Pit #2) apr. 100' upstream from the head of the canyon. I move apr. 2 cu. yds of boulders, cobbles and gravel, following the bedrock down from the side of the creek. I recover about 10 bits of gold the size of very coarse sand (1-2 mm across), plus some fine colors.

Sunny and hot



Looking up
Lease creek
from top of
Canyon

July 6

I do chores around camp until around noon, then I drive out to Johnson's crossing and have lunch. I drive out to the airstrip 5 miles from Johnson's crossing to have a look at 2 airplanes that are for sale, one is a Cessna 150 and the other is a Citabria c/w floats and skis. The fellow wants \$12,000⁰⁰ for the Cessna and \$39,000⁰⁰ for the Citabria, it has only 550 hrs on it total time.

I drive out to Teslin, have a shower and wash cloths. I meet my mother and two of my sister's, they have come to visit for about 1 week. We stop at Makluk Bay for the Salmon Bake, it was very good.

We drive on to Johnson's crossing. We leave Pauline's car there and continue on to Iron c., we get there shortly after 10:00 PM.

Sunny and warm, a few heavy showers in the area

July 7

We show man, Paulina and Lucie the old workings on Iron Cr, the old camp and equipment (wagon wheels, steam donkey, water pump etc.) After lunch they walk down the lower trail with Leo to the lower claim to do some panning. I stay behind to butcher the last ~~to~~ 2 domestic rabbits that we had for fresh meat. I join them on the lower claim, I show Lucie how to fish for grayling, she catches a nice one about 11" long, she says it's the first fish she ever caught. They find some nice gold using gold pans and the rocker box. We go back to base camp for supper, then we play cards. everyone is quite tired from all the traveling etc. Man also has a cold.

Sunny and hot 33° in the shade

Ken calls me to tell me that we have to move from the yard that we are renting in McCree

July 8

We have breakfast, the Malaysian prospectors stop in at our base camp on their way up Iron cr on a prospecting trip. We pack up as I have to go to town to see about moving out of M'Crac and Mom Lucie and Pauline want to see Leo's place at Tagish and to visit relatives in Whitehorse. We drive out on the lower rd along Sidney Cr that comes out at Karl Erubers camp. We stop at JC for lunch then go on to Tagish. Leo and company stay at Tagish, I go on to Whitehorse to see about moving things at the shop. I talk to Ken for a few minutes on the road he is heading out to Tagish.

Sunny and hot

July 9

I stay in town, wash cloths, shower and wash the truck.

Sunny and hot

July 10

I pick up the mail and the assay report from the assayers. I see Dave Downing about the prospectors assistance grant. I show him the results of the Gold Platinum & Palladium assay. He refers me to Trevor Bremner a geologist with geo. I talk to Trevor over the phone, he suggests that I should possibly stake quartz claims over the area where the sample came from. I move the caboose back to Kerry's place. I meet Leo Mom Pauline and Lucie at the SS Klondike, we tow the boat together, they go back to Tagish, I stay at M'Crac.

Sunny and hot.

July 11

I clean up around the yard and take everything out of the shop. I borrow a tow bar from IBEX Const. for towing my old school bus, that I use as a storage shed. I put in for a payment of '\$3,389.46' from the prospecton assistant grant. Dave is not in, so I leave it with the secretary. I camp at McCrae again.

Sunny and hot a few thunder storms.

July 12

I leave for Tagish at 6:00 AM, pulling the old school bus (storage shed). I park it at in Leo's yard at Tagish Lake.

Sunny and hot no rain

July 13

Our company leaves for Sask. with planned stop overs at Stewart and Smithers B.C.

I go back to Whitehorse to finish moving out of the yard in McCrae. I pick up the Gold assay report from the assayers.

I talk to Ken about the results etc.

Sunny and warm.

July 14

Phil offers me a job, it will start in about two weeks, I'm considering it. I pick up some groceries and other supplies and head out for the bush. I stay overnight at Tagish. Cloudy and cooler.

July 15

We arrive back at Iron Cr., we work around camp. There is lots of activity, an Karl Grubers claim below our lower Iron Cr. claim, they are drilling another test hole with the Becker drill (appr. 200' deep). They also have a 690 John Deere excavator digging test pits. There are a few people around that I haven't seen before. They kind of ignore us, so we don't hang around. We walk over to Sidney Cr. to look around (near old log cabin with rhubarb). Mostly cloudy and cooler.

July 16

We walk down Iron Cr., going down into the canyon at a number of places along the way. We walk up Sidney Cr. a ways. I have a bath in Iron Cr. "Brrr... it's quite cold still." Claudie called on the mobile to inquire about the berries, she also wants to know how my new water pump is working, as she is thinking of buying one. Ken will be going to work down along the ALASKA Hwy. near Smart river within a couple of weeks.

Sunny and hot

July 17

We go up Sidney Cr and up to my lease we pack in some fuel for the water pumps, and a small slice box, that I borrowed from Ken Macphie I look at the rock out crops in the area.

Leo stakes a one mile prospecting lease, upstream from my lease. We go back to base camp

Cloudy warm one life shower

July 18

We pick up some lumber and gasoline from our lower Iron Cr camp. We haul it up to base camp with the Pug. I service the Pug (oil change clean air filter etc) I do some repairs to the cabin (replace ripped up poly with some old windows that I've salvaged from an old cabin in Carcross) I run the gen for about 5 hours to run the skid saw and to charge up the radio telephone battery. Leo started digging a test pit on the John claim. Karl's excavator went down the road towards his camp

mostly cloudy and warm small shower 6:00 PM



Base camp after repairs
glass windows
floor joist & beams trimmed



July 19

I go up to my lease, I work on Pit #2 (started on July 5) with the suction nozzle. I follow the bedrock down into the creek. I move approx. 1 cu yd of gravel and muck, from which I recover approx. 10 pieces of gold the size of coarse sand, approx. 20 fine colors and one piece 1 mm thick x 3 mm wide x 4 mm long. I go back to camp. Leo continued working on the John claim.

cloudy, smokey, warm, small shower in the eve.

July 20

We go up to the lease (Leo and I) we start another pit (Pit #3) on the edge of the creek. The bedrock is black and very fractured. We recover about 15 colors the size of very fine sand. We look up the creek for another site to test. We look at the bedrock at the top of the canyon, we take a few samples for assay. We go back to base camp. We get there just in time as it starts to rain.

cloudy, cool and rain in the evening

July 21

IT's raining, so we leave for town to pick up supplies, mail etc. We pull the drills (from Carl's camp) out of the ditch and up the last hill on the way out on the Sidney cr. road. We arrive at Whitehorse at 2:00 PM. I do my banking, pick up the mail. Leo registers his prospecting lease. I run into Ron Stark, and talk with him for a few minutes. I went up to the Northern Affairs building up on Range Road to buy a few maps (geology map Teslin, Topo. map 105-C-13) I stop in to see Phil, he's planning on starting the renovation job up in Ross River on around the 24th of July. I camp overnight in my truck, Leo goes to Tazish with my new truck. I do my laundry.

cloudy some sunny periods
heavy rain in the AM, lite rain late evening.

July 22

I go see Vic to see if he had any trouble recording his claim, since it didn't show any open ground on the mining recorder's map he had no problem with it. I buy my groceries, film etc. then I go to Tagish to pick up a few things that I have stored there and to change trucks. I take the old GMC 4x4. I stop in to see Ken and Claidie MacPhee, we talk about prospecting etc, over a couple of scotches. They give me a bottle of Glenlivet to take back to Iron Ck. It's sunny and warm, I leave for Iron Creek. By the time I get to Johnson's it is raining steady. I had to put the tire chains on to make it up the one hill, on the Sidney Cr. road. I picked up a full 5 gal pail of oil, that must of fell off someones truck. I drop it off at Carl Gombens camp as it's probably there. I arrive at camp around 10:00 PM. Leo stayed at Tagish, he's thinking of going to ALBERTA to look for work.

July 23

I go to the truck with the Pug to pick up some supplies. I walk down to put up the claim tags on Andy's claim. On the way back to camp I look at the bedrock along the canyon. I service the Pug (clean the air filter grease the u joints etc.) and get ready for a trip up Sidney Cr.

mostly sunny and warm, no rain

July 24

I go up Sidney Cr and up to my lease, I then go cross country due west from the head of the canyon. I only go approx. $1\frac{1}{2}$ miles as it is hard going, (lots of dead fall, thick brush and steep side hill). I find a small stream and do some panning on it. I get a few fine colors. I look at a few outcrops along the way. I go back to base camp.

sunny, cloudy 50/50 cool, no rain

July 25

I study samples that I have picked up. I patch up the Pug, the centre u joint fell apart yesterday on the way back to base camp. I clean up the house, charge up the radio telephone battery and have a bath.

cloudy and cool clearing up in the eve.

July 26

I went up to the lease and took some rock samples, I also worked the suction nozzle I recovered about 8 pieces of gold the size of coarse sand and some very fine colors. I stashed the pump, slance box hoses etc... under a tree next to the creek as I will be away working on a const. job for about a month. I go back to Iron Cr Camp. I overheard on the radio tel. that Alex Muephee has broken his arm today.

Sunny and hot

July 27

I go down into the Iron Cr canyon to pick up a few rock samples for assay. I sort all the samples I've collected. I close up camp and leave for town. I left the Pug at base camp. I talk to Karl and Senny Gruber for a few minutes at Sidney Cr on the canal rd. they are somewhat disappointed with the test results of their drilling program and they are not sure about future plans for the area. I stay overnight at Tagish. Leo has left for ALBERTA.

Sunny and hot.

July 28

I go into Whitehorse and do the usual running around, picking up the mail, paying bills etc. my progress cheque for 2220⁰⁰ was in the mail. I stop in to see Dave to let him know what's happening, he wasn't in so I left a message with Ushika. I drop off 10 samples for assay. Andy sent me ~~up~~ some good belt dressing for the Paj and a copy of the pictures he took when he was up with his airplane.

July 31

I put in for a payment of \$943.⁰⁰

I go work for Phil Andrietz (Andco Ent. Ltd) on a renovation contract up in Ross River.

Aug 22

I check with assayers, results are not in yet. I pick up a case of Forcite 40% and 40 safety fuses. I buy some grub and leave for Iron Cr. I run into some heavy rain near Sidney Cr and have to chain up the trucks to make it up the steep hill approx. 3 miles in on the Sidney Cr road. I arrive at camp around 9:00 PM.

Aug 23

I move my truck and the Pug up to the end of the trail up Sidney Cr. 3 hunters go up the old winter rd with 4 wheelers.

I pack the case of powder up to my lease. I look around some, then I go back to the truck to camp oversite.

cloudy and cool, one shower late afternoon

Aug 24

I take a look at the first lake before going up to the lease. I blast some boulders out of the way, it sure works good. I use up 5 fuses and 21 sticks of powder. (just above canyon)

Clear with cool breeze in the AM

Sunny and warm until about 4:00 PM

it gets cloudy - no rain

Aug 25

I move smaller boulders and fragments of the larger ones off the area of bedrock to be worked with 2 1/2" section nozzle. I dredge the area and recover some very fine gold, there is a fair amount of black sand containing quite a lot of garnet

Sunny and hot

Aug 26

I go up the Sidney creek valley, on the left hand side of the creek, I look at the bedrock outcrops along the way up to and past the first lake. The water level of the first lake is about 12 feet higher than normal due to beaver-dams. This makes it difficult to walk along the lake, I go back to the truck to camp overnight.

Sunny and Hot

Aug 27

I look around Sidney Cr near the mouth of Iron Cr. Water levels in the creeks are lower than normal due to the lack of rain.

IT gets very smoky, so I decide to head out to see if any of the firs are nearby. I also want to buy a canoe for traveling up the lakes up Sidney Cr. I go to Tazish to spend the night.

Sunny, Hot and smoky

Aug 28

I go to Whitehorse I check with assay office, the results are not in yet. I see Yukon Explosives about the powder they sold me, it's over 2 yrs. old, has a strong odour. the sticks have sweetened some and are out of round. The fellow who sold it to me assures me that it's still good, I leave it at that. I look around for a canoe, there are a few advertised in the paper. I don't get an answer when I try the tel nos. I call Gord Dumas about possibly doing some logging in the Sidney Cr valley, he doesn't think that there is any sawlogs available due to land claims and mineral claims in the area.

Sunny and hot.

Aug 29

I look at a few used canoes as well as all the new ones in town. I finally decide on a 16 foot fiberglass square stern (Quick Silver workhorse) from the Canoe People for \$639.⁰⁰ I have to come back tomorrow to pick it up, they have to move the carrying yoke, so it balances properly. I go prospecting up the Mitchell valley. I also look for timber for saw logs. About 10 miles in from the Alaska Hwy, the trail follows up on a gravel bench. It looks as if there could be large volumes of good gravel. I also find some good timber. I talk to René Pelkman about it. He is very busy with a ^{Forest} fire near Lake Laberge.

Sunny and warm

Aug 30

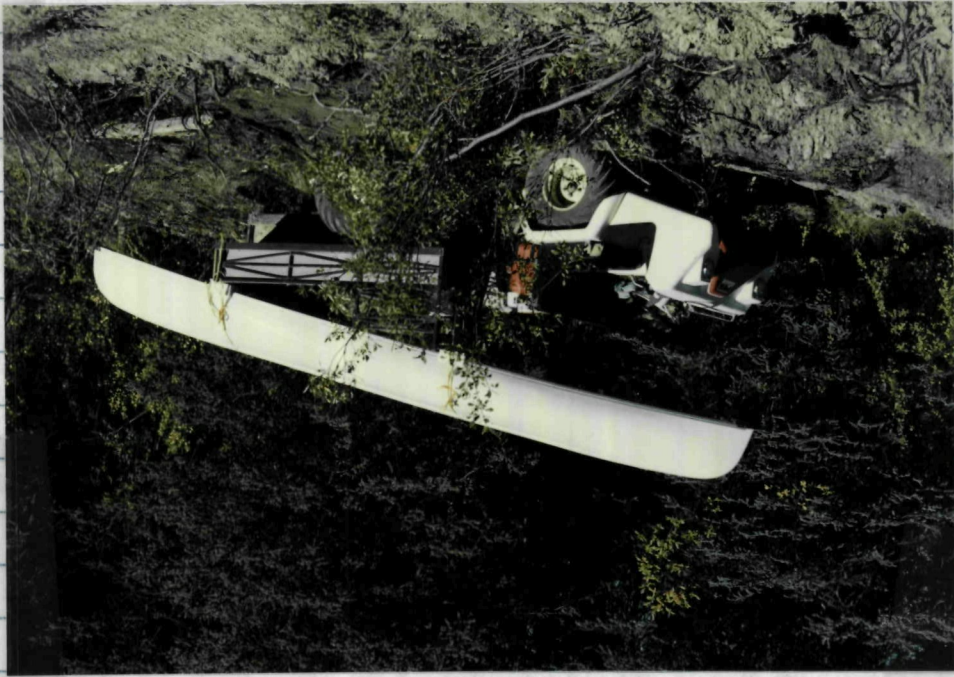
I get a hair cut, I go shopping for an outboard motor for the canoe I buy a 2 horse from Honda for \$700⁰⁰, it will be ready at 2:00 PM. I buy 2 paddles and a set of foam pads for putting the canoe on the roof of a car or truck. (Paddles \$40⁰⁰ each foam pads \$26⁰⁰ for set of 4) I pick up the canoe at 1:00 PM and the outboard around 1:45. I pick up a few groceries and leave town I go by Jagisk to pick up a few maps that I have there. I arrive at Karl Grubers camp around 10:00 PM, I stop and talk with them a while, they are moving out, but they might be back ~~next year~~ in a week or so as Jozy Grant plans to do some testing on Iron Cr. Karl says no problem if I want to log on his leases. I arrive at my lower Iron Cr camp around 11:30 PM I sleep in the truck. Sunny not quite so hot 18° C



Aug 31

I poke around Iron Cr until around noon, then I drive up Sidney Cr as far as I can go with the trucks (the first creek up from Twin Cr) I put the canoe and my gear on the log and take it to the end of the trail. (Flat creek) I hike up to the first lake to pick up my waders, then I come back for the canoe. I pack it across the "death bog" to Sidney Cr. I put on my waders and pull the canoe up the creek paddling it only short distances over heavier dam ponds. I drag the poor canoe over many beaver dams, deadfalls and passages through the willows in a few places. I think it would of been easier to pack it all the way to the lake on my trail, it shure would of been easier on the canoe. I walk back to the log to get some gear, sleeping bag etc. then head back up to the lake. I paddle up the lake and camp for the night.

Sunny and warm



Sept 1

There is a heavy frost this morning, I take the canoe up to the second lake, it is much easier going, paddling most of the way the rest of the way was shallow but not bad for dead fall.

I paddle up the second lake with some difficulty against the wind I look at bedrock outcrop along the way. I then head back to the first lake. I hike back to the truck and drive back to Iron Cu. I hike around the Iron Cu canyon. I find a quartz vein about 2 $\frac{1}{2}$ - 3" wide with some selena in it. It is located approx 75 feet below the lower falls on the RHS of the creek. I go back to the first lake and camp overnight.

Sunny not quite so warm



Sept 2

Light rain 7:00 - 9:00 AM, no frost some fresh snow on higher mountain tops. I take the Pug out to the truck to pick up supplies. I drive back to Iron Co. I heat up some water, take a bath have supper I pack up some extra grub and head back to the lake cloudy like drizzle now & then

Sept 3

I paddle over to the island to have a look at it. It starts to rain I go back to the truck to pick up my insulated covers etc. cloudy, no frost some rain

Sept 4

I go up to my lease, I look around some then I pack my gear from the top of the canyon to the bottom end of the lease I camp at the lake Some like drizzle in the AM it clears up in the afternoon.

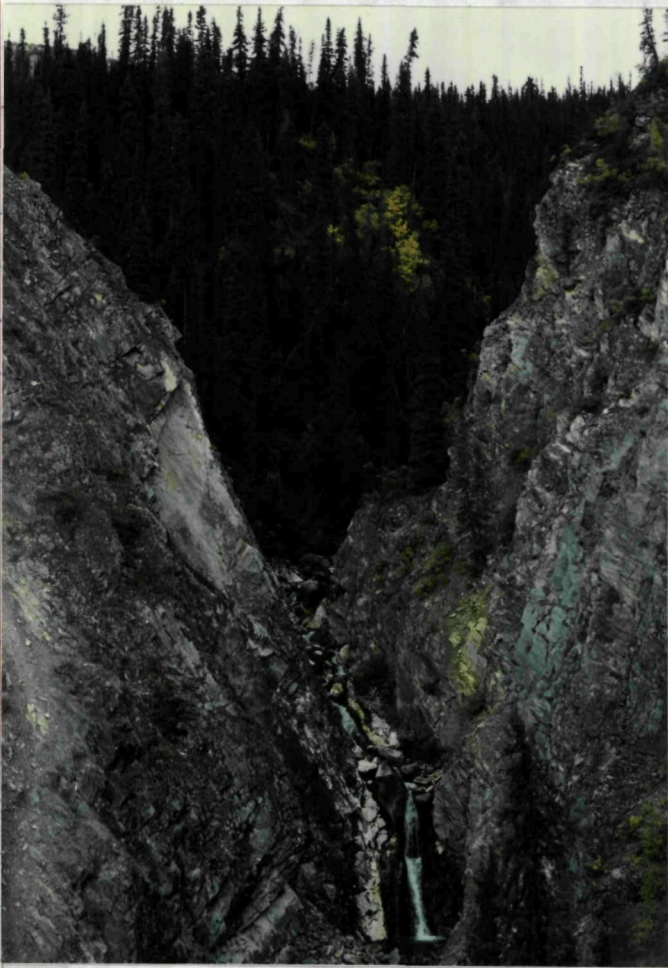


Sept 5

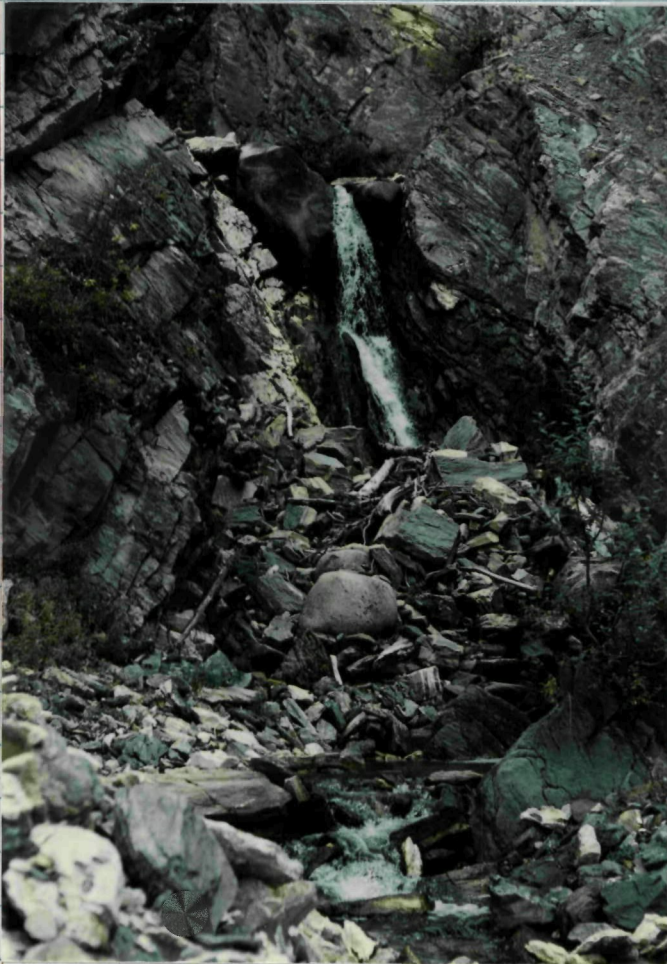
I go up to the top end of the second lake by canoe. I then hike up to have a look at the canyon on the next creek up on the right hand side of Sidney. It is quite a Canyon. I go down into the deepest part I find some interesting looking formations including a large cluster of weathered calcite crystals. I take some rock samples for assay. I then follow the creek down to Sidney Cr. I walk up the Sidney Cr valley up to the third lake looking at the bedrock outcrops along the way. It looks like the top end of Sidney Cr. now flows the other way towards the Terlin river as the ~~the~~ creek bed has dried up below the third lake. As it's getting late I head back to camp at the first lake. No rain a few clouds not too warm.



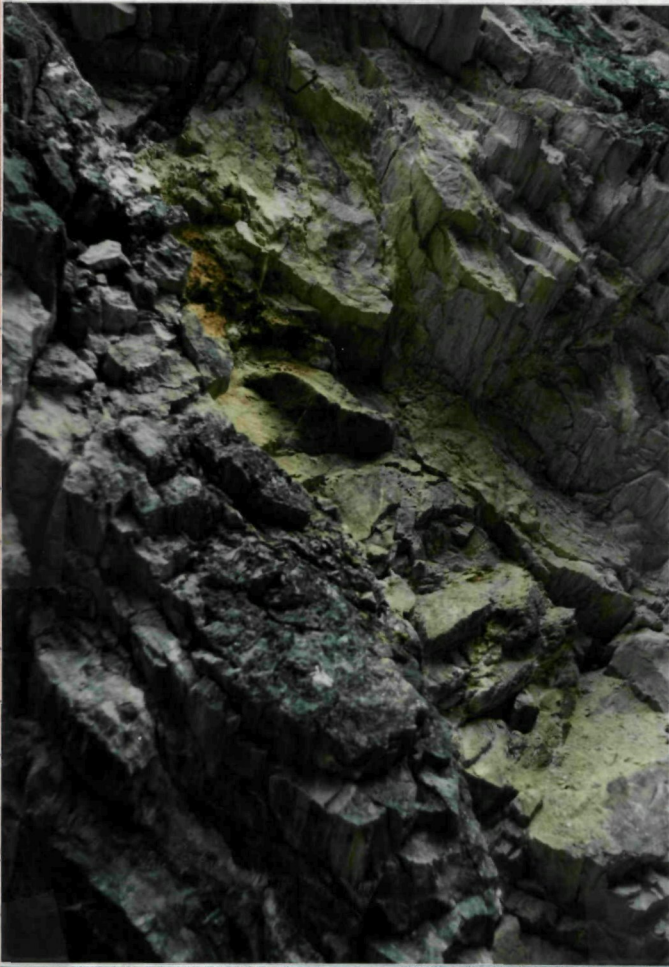
calcite crystals



View of Canyon
from above



Same water fall
as seen from
inside of canyon



Rock formations
in canyon



Sept 6 and 7

I pack some gear etc out from up at the first lake. I leave the Pug at the cook shack and leave for Tagish

Nice cloudy, no rain.

Sept 8

I go to Whitehorse, check with assays for results; nothing is in yet, so the girl calls down to Vancouver they will send up partial results by computer this afternoon. I pick them up at 4:00 PM.

Sunny and hot (new records)

Sept 9

I spend some time studying the results of the assays.

Sunny and warm

Sept 10

I sleep in then I head into Whitehorse

cloudy and windy

Sept 11

I get some tires for the truck fixed.
I go up to 200 range rd. to buy some geology books and reports. I go to the chamber of mines to read up on rare earth elements. I get some extra prints made up of the photos that I took this summer. I buy ~~some~~ binders and other material to make up my report on the summer prospecting. I go back to Tagish to spend the night. Ken is home for a few days, we have a few scatches together and look over the results of the assays.

It's a nice day

Sept 12

Ken comes over to look over some of my rock samples: he leaves for work in Whitehorse. I leave for Iron Cr.
I have another look at the bedrock at the top end of the Canyon on Iron Cr. and I take a few more samples.
Sunny and warm

Sept 13

I look at the bedrock at the lower end of the Iron Cr. canyon and take a few more samples. Two hunters drive in with a two wheel drive, they had two four wheelers in the back of the truck. It rains on and off, it snows up high in the mountains.

Heavy rain and snow late eve.

Sept 14

Mountain tops are covered with snow, it's clear and -3°C . I take the Pug to the end of the trail up Sidney Creek. I pack equipment out from my lease (pump, sluice box, hoses and powder). I take the canoe out from the lake. I leave the canoe and powder at the truck at the lower camp. It's 9:00 and getting dark when I arrive at base camp. mostly cloudy cool. lite shower 7:30 - 8:00 PM

Sept 15

IT's -5°C this morning. I start packing up things around the cabin. I stake 6 quartz claims along the Iron Co canyon (Canyons #1-6). I go down and have another look at the bedrock around the lower falls. I take a few more samples. I stake 2 more claims below the first 6 (Canyons #7 + #8). I plan to stake 8 more tomorrow. I tie the canoe down on the track as it gets quite windy at times. I see a couple more hunters driving out.

Clear and cool windy at times.

Sept 16

IT's clear and cold this morning. I stake 8 more claims (Canyon #9-16) on the east side of claims #1-8. more hunters drive in today.

A few clouds mostly sunny and cool.

Sept 17

I close up camp as I will be going to work for a couple of weeks. It was -10°C this morning. I leave Iron Creek around 3:00 PM and arrive at Tagish around 6:00 PM.

Clear and cold early AM cloudy early PM
it starts to rain 8:00 PM.

Sept 17 - Oct 3

I go work for Phil Andriete (Andco Ent Hld) in Ross River (Retreat 8 houses Yukon Housing)

Oct 15

Ken and I drive out to Iron Cr to pick up the Pug. we also plan to stake a 3 mile placer lease that is expiring at midnight tonight. Bob Wondge and Cam Weiland show up with plans to stake the same lease. we decide to split it up 50/50. At midnight we go down and stake the leases. it takes us all ~~night~~ night.

Oct 16

Just as we finish staking the leases at 9:00 AM Joey Grant flies over with by helicopter over-staking our leases. we walk back to base camp looking at the bedrock outcrops along the way. we all go up to the cabin for moose steak and beans. Cam + Bob leave for Whitehorse.

Oct 17

Ken and I close up camp, it has snowed about 4" since last night. we load the Pug on my truck. then we go to Tagish. ~~for~~

Oct 18

Ken and I go to Whitehorse to register the lease, only to find out that it is invalid due to the fact, that I had not registered the P.O.A. with the mining recorders prior to staking the lease. We have supper with Cam and Bob and Sweed at the Take. We decide (Ken and I) decide not to go back and restake. Bob, Cam and Sweed will go back and stake it by P.O.A. they agree to give us the bottom 2 claims of the lease if they are successful in getting it. We go back to Tagish.

Oct 19 - 22

Ken and I go to work in Terlin for David Naime and ass. on the Fox Point sub. (Surveying) - we go back to Tagish.

Oct 23

I sort my rock samples and work on my diary.

Oct 24

Ken and I go to Whitehorse, I drop off 18 samples at the Assayore, some results are not expected back for approx. 2 months. We drop off affidavits at the mining recorders as to what went on at Iron Cr. in regards to the staking of the leases on Oct 16. Ken goes back to Tagish, I get a room at the Airport Chalet, I work on my diary. I talk to Trevor Bremner and show him the results of the assays. He suggests that I prospect the area next summer especially for Thorsten + uranium.

Oct 25

I finish putting my diary together. I submit a statement of expenditure for the last of this years prospector ass. grant.

I apply for the prospectors assistants grant for the ~~coming~~ next prospecting season (1990)

Bondar-Clegg & Company Ltd.
 130 Pemberton Ave.
 North Vancouver, B.C.
 2R5
 985-0681 Telex 04-352667



**Geochemical
 Lab Report**

A DIVISION OF INCHCAPE INSPECTION & TESTING SERVICES

REPORT: V89-03515.0 (COMPLETE)

REFERENCE INFO:

CLIENT: ROB HAMEL
 PROJECT: NONE GIVEN

SUBMITTED BY: R. HAMEL
 DATE PRINTED: 2-JUL-89

ORDER	ELEMENT	NUMBER OF ANALYSES	LOWER DETECTION LIMIT	EXTRACTION	METHOD
1	Au Gold - Fire Assay	1	1 PPB	FIRF-ASSAY	DC Plasma Emission
2	Pt Platinum	1	5 PPB	FIRE-ASSAY	DC Plasma Emission
3	Pd Palladium	1	1 PPR	FTRE-ASSAY	DC Plasma Emission

SAMPLE TYPES	NUMBER	SIZE FRACTIONS	NUMBER	SAMPLE PREPARATIONS	NUMBER
X OTHER	1	2 -150	1	SIEVE -20	1
				PULVERIZING	1

REMARKS: Assay of high Au to follow on V89-03515.6

REPORT COPIES TO: MR. ROB HAMEL

INVOICE TO: MR. ROB HAMEL

Pan concentrate Iron Cr Canyon

Bondar-Clegg & Company Ltd.
Pemberton Ave.
North Vancouver, B.C.
V7R 5R5
(604) 5-0681 Telex 04-352667



Geochemical Lab Report

A DIVISION OF INCHCAPE INSPECTION & TESTING SERVICES

REPORT: V89-03515.0

DATE PRINTED: 2-JUL-89

PROJECT: NONE GIVFN

PAGE 1

SAMPLE NUMBER	ELEMENT UNITS	Au PPN	Pt PPB	Pd PPB
X2 061989		>100000	48	<1

Bondar-Clegg & Company Ltd.
130 Pemberton Ave.
North Vancouver, B.C.
V7P 2R5
985-0681 Telex 04-352667



Certificate of Analysis

A DIVISION OF INCHCAPE INSPECTION & TESTING SERVICES

REPORT: V89-03515.6 (COMPLETE)

REFERENCE INFO:

CLIENT: MR. ROB HAMEL
PROJECT: NONE GIVEN

SUBMITTED BY: R. HAMEL
DATE PRINTED: 7-JUL-89

ORDER	ELEMENT	NUMBER OF ANALYSES	LOWER DETECTION LIMIT	EXTRACTION	METHOD
1	Au Gold	1	0.002 OPT		Fire Assay

SAMPLE TYPES	NUMBER	SIZE FRACTIONS	NUMBER	SAMPLE PREPARATIONS	NUMBER
X OTHER	1	2 -150	1	AS RECEIVED, NO SP	1

NOTES: # indicates ERRATIC RESULTS

REPORT COPIES TO: MR. ROB HAMEL

INVOICE TO: MR. ROB HAMEL

Pan concentrate Iron Creek Canyon

Bondar-Clegg & Company Ltd.
130 Pemberton Ave.
North Vancouver, B.C.
V7P 2R5
☎ 985-0681 Telex 04-352667



Certificate of Analysis

A DIVISION OF INCHCAPE INSPECTION & TESTING SERVICES

DATE PRINTED: 7-JUL-89

REPORT: V89-03515.6

PROJECT: NONE GIVEN

PAGE 1

SAMPLE NUMBER	ELEMENT UNITS	Au OPT
X2 061989		0.794#

A DIVISION OF INCHCAPE INSPECTION & TESTING SERVICES

REPORT: V89-04357.0 (COMPLETE)

REFERENCE INFO:

CLIENT: MR. ROB HAMEL
 PROJECT: NONE GIVEN

SUBMITTED BY: R.HAMFL
 DATE PRINTED: 13-SEP-89

ORDER	ELEMENT	NUMBER OF ANALYSES	LOWER DETECTION LIMIT	EXTRACTION	METHOD
1	Au Gold - Fire Assay	1	1 PPB	FIRE-ASSAY	DC Plasma Emission
2	Pt Platinum	1	5 PPB	FIRE-ASSAY	DC Plasma Emission
3	Pd Palladium	1	1 PPB	FIRE-ASSAY	DC Plasma Emission
4	Au Gold	10	5 PPB	NOT APPLICABLE	Inst. Neutron Activ.
5	As Arsenic	10	1 PPM	NOT APPLICABLE	Inst. Neutron Activ.
6	Ba Barium	10	100 PPM	NOT APPLICABLE	Inst. Neutron Activ.
7	Br Bromine	10	1 PPM	NOT APPLICABLE	Inst. Neutron Activ.
8	Ce Cerium	10	10 PPM	NOT APPLICABLE	Inst. Neutron Activ.
9	Co Cobalt	10	10 PPM	NOT APPLICABLE	Inst. Neutron Activ.
10	Cr Chromium	10	50 PPM	NOT APPLICABLE	Inst. Neutron Activ.
11	Cs Cesium	10	1 PPM	NOT APPLICABLE	Inst. Neutron Activ.
12	Eu Europium	10	2 PPM	NOT APPLICABLE	Inst. Neutron Activ.
13	Hf Hafnium	10	2 PPM	NOT APPLICABLE	Inst. Neutron Activ.
14	Ir Iridium	10	100 PPB	NOT APPLICABLE	Inst. Neutron Activ.
15	La Lanthanum	10	5 PPM	NOT APPLICABLE	Inst. Neutron Activ.
16	Lu Lutetium	10	0.5 PPM	NOT APPLICABLE	Inst. Neutron Activ.
17	Mo Molybdenum	10	2 PPM	NOT APPLICABLE	Inst. Neutron Activ.
18	Rb Rubidium	10	10 PPM	NOT APPLICABLE	Inst. Neutron Activ.
19	Sb Antimony	10	0.2 PPM	NOT APPLICABLE	Inst. Neutron Activ.
20	Sc Scandium	10	0.5 PPM	NOT APPLICABLE	Inst. Neutron Activ.
21	Se Selenium	10	10 PPM	NOT APPLICABLE	Inst. Neutron Activ.
22	Sm Samarium	10	0.1 PPM	NOT APPLICABLE	Inst. Neutron Activ.
23	Sn Tin	10	200 PPM	NOT APPLICABLE	Inst. Neutron Activ.
24	Ta Tantalum	10	1 PPM	NOT APPLICABLE	Inst. Neutron Activ.
25	Tb Terbium	10	1 PPM	NOT APPLICABLE	Inst. Neutron Activ.
26	Te Tellurium	10	20 PPM	NOT APPLICABLE	Inst. Neutron Activ.
27	Th Thorium	10	0.5 PPM	NOT APPLICABLE	Inst. Neutron Activ.
28	U Uranium	10	0.5 PPM	NOT APPLICABLE	Inst. Neutron Activ.
29	W Tungsten	10	2 PPM	NOT APPLICABLE	Inst. Neutron Activ.
30	Yb Ytterbium	10	5 PPM	NOT APPLICABLE	Inst. Neutron Activ.
31	Zr Zirconium	10	500 PPM	NOT APPLICABLE	Inst. Neutron Activ.
32	Ag Silver	10	0.1 PPM	HNO3-HCL HOT EXTR	Atomic Absorption
33	Cd Cadmium	10	0.2 PPM	HNO3-HCL HOT EXTR	Atomic Absorption
34	Cu Copper	10	1 PPM	HNO3-HCL HOT EXTR	Atomic Absorption
35	Ni Nickel	10	2 PPM	HNO3-HCL HOT EXTR	Atomic Absorption
36	Pb Lead	10	2 PPM	HNO3-HCL HOT EXTR	Atomic Absorption
37	Zn Zinc	10	1 PPM	HNO3-HCL HOT EXTR	Atomic Absorption

Bondar-Clegg & Company Ltd.
 130 Pemberton Ave.
 Vancouver, B.C.
 (604) 985-0681 Telex 04-352667



Geochemical
 Lab Report

A DIVISION OF INCHCAPE INSPECTION & TESTING SERVICES

REPORT: V89-04357.0 (COMPLETE)

REFERENCE INFO:

CLIENT: MR. ROB HAMEL
 PROJECT: NONE GIVEN

SUBMITTED BY: R.HAMEL
 DATE PRINTED: 13-SEP-89

ORDER	ELEMENT	NUMDFR OF ANALYSES	LOWER DETECTION LIMIT	EXTRACTION	METHOD
38	B Boron	10	10 PPM		DC Plasma Emission
39	Li Lithium	10	1 PPM	HF-HNO3-HClO4-HCl	Atomic Absorption
40	Al2O3 Alumina (Al2O3)	10	0.01 PCT	HF-HNO3-HClO4-HCl	DC Plasma Emission
41	CaO Calcium (CaO)	10	0.01 PCT	HF-HNO3-HClO4-HCl	DC Plasma Emission
42	Fe2O3 Total Iron as Fe2O3	10	0.01 PCT	HF-HNO3-HClO4-HCl	DC Plasma Emission
43	K2O Potassium (K2O)	10	0.01 PCT	HF-HNO3-HClO4-HCl	DC Plasma Emission
44	LOI Loss On Ignition	10	0.01 PCT		Gravimetric
45	MgO Magnesium (MgO)	10	0.01 PCT	HF-HNO3-HClO4-HCl	DC Plasma Emission
46	MnO Manganese (MnO)	10	0.01 PCT	HF-HNO3-HClO4-HCl	DC Plasma Emission
47	Na2O Sodium (Na2O)	10	0.01 PCT	HF-HNO3-HClO4-HCl	DC Plasma Emission
48	P2O5 Phosphorous (P2O5)	10	0.01 PCT	HF-HNO3-HClO4-HCl	DC Plasma Emission
49	SiO2 Silica	10	0.01 PCT	HF-HNO3-HClO4-HCl	DC Plasma Emission
50	TiO2 Titanium (TiO2)	10	0.01 PCT	HF-HNO3-HClO4-HCl	DC Plasma Emission
51	Totals Whole Rock Totals	10	0.01 PCT		
52	Ce Cerium	1	2 PPM		Inst. Neutron Activ.
53	Dy Dysprosium	1	0.5 PPM		Inst. Neutron Activ.
54	Er Erbium	1	50 PPM		Inst. Neutron Activ.
55	Eu Europium	1	0.5 PPM		Inst. Neutron Activ.
56	Gd Gadolinium	1	100 PPM		Inst. Neutron Activ.
57	Ho Holmium	1	0.5 PPM		Inst. Neutron Activ.
58	La Lanthanum	1	0.2 PPM		Inst. Neutron Activ.
59	Lu Lutetium	1	0.05 PPM		Inst. Neutron Activ.
60	Nd Neodymium	1	5 PPM		Inst. Neutron Activ.
61	Pr Praseodymium	1	25 PPM		Inst. Neutron Activ.
62	Sc Scandium	1	0.05 PPM		Inst. Neutron Activ.
63	Sm Samarium	1	0.05 PPM		Inst. Neutron Activ.
64	Tb Terbium	1	0.5 PPM		Inst. Neutron Activ.
65	Th Thorium	1	0.2 PPM		Inst. Neutron Activ.
66	Tm Thulium	1	1 PPM		Inst. Neutron Activ.
67	U Uranium	1	0.5 PPM		Inst. Neutron Activ.
68	Yb Ytterbium	1	0.2 PPM		Inst. Neutron Activ.

A DIVISION OF INCHCAPE INSPECTION & TESTING SERVICES

REPORT: V89-04357.0 (COMPLETE)

REFERENCE INFO:

CLIENT: MR. ROB HAMEL
 PROJECT: NONE GIVEN

SUBMITTED BY: R.HAMEL
 DATE PRINTED: 13-SEP-89

SAMPLE TYPFS	NUMBER	SIZE FRACTIONS	NUMBER	SAMPLE PREPARATIONS	NUMBER
C CONCENTRATE (PAN/HM)	2	2 -150	10	OTHER SAMPLE PREP 1	1
R ROCK OR BED ROCK	8			PULVERIZING	2
				CRUSH, PULVERIZE -150	8

REMARKS: OTHER SAMPLE PREP IS SIEVING SAMPLE
 #102 TO -18 MESH.
 ERRATIC RESULTS NOTED ON SAMPLE #103:
 Au CHECK = 3392 PPM
 Pt CHECKS = 36 & <15 PPB
 SAMPLES 102 AND 103: ELEVATED DETECTION LIMITS
 DUE TO HIGH Cr, Ta, Th, U AND W CONTENTS.

REPORT COPIES TO: MR. ROB HAMEL

INVOICE TO: MR. ROB HAMEL

Sample # 102 pan concentrate Iron Cr Canyon
 Sample # 103 pan concentrate lease creek PL # 8318
 Sample # 104 bedrock top end of canyon on lease
 Sample # 105 bedrock next to Iron Cr. old Hrd. site app
 300' from survey pin marking end of 1 mile baseline
 (downstream) up Iron Cr.
 Samples # 106 — #111 bedrock samples from top end of the
 Canyon on lease PL 8318

Bondar-Clegg & Company Ltd.
 130 Pemberton Ave.
 North Vancouver, B.C.
 V7P 2R5
 (604) 985-0681 Telex 04-352667



**Geochemical
 Lab Report**

A DIVISION OF INCHCAPE INSPECTION & TESTING SERVICES

DATE PRINTED: 13-SEP-89

REPORT: V89-04357.0

PROJECT: NONE GIVEN PAGE 1A

SAMPLE NUMBER	ELEMENT UNITS	Au PPB	Pt PPB	Pd PPB	Au PPB	As PPM	Ba PPM	Br PPM	Ce PPM	Co PPM	Cr PPM	Cs PPM	Eu PPM
C2 #102					>10000	11	<250	<2	250	120	4610	<1	<2
C2 #103		>10000	300	<2	731	12	<790	<2	350	72	5090	<1	<2
R2 #104					16	2	530	<1	22	<10	180	2	<2
R2 #105					7	3	2300	<1	<10	<10	200	2	<2
R2 #106					<5	<1	440	<1	<10	<10	<50	2	<2
R2 #107					<5	1	410	<1	<10	<10	190	<1	<2
R2 #108					<5	3	1900	<1	<10	<10	120	<1	<2
R2 #109					12	5	3600	<1	13	<10	140	<1	<2
R2 #110					<5	2	2600	<1	14	<10	160	2	<2
R2 #111					<5	5	380	<1	<10	<10	160	<1	<2

Bondar-Clegg & Company Ltd.
 130 Pemberton Ave.
 North Vancouver, B.C.
 V7P 2R5
 (604) 35-0681 Telex 04-352667



**Geochemical
 Lab Report**

A DIVISION OF INCHCAPE INSPECTION & TESTING SERVICES

DATE PRINTED: 13-SEP-89

REPORT: V89-04357.0

PROJECT: NONE GIVEN PAGE 1B

SAMPLE NUMBER	ELEMNT UNITS	Hf PPM	Ir PPB	La PPM	Lu PPM	Mo PPM	Rb PPM	Sb PPM	Sc PPM	Se PPM	Sm PPM	Sn PPM	Ta PPM
C2 #102		13	<100	160	<0.5	<3	<21	1.2	16.0	<15	21.3	<560	82
C2 #103		<4	<100	210	<0.5	<5	<19	1.7	13.0	<10	25.0	<500	42
R2 #104		<2	<100	13	<0.5	<2	36	0.9	5.2	<10	2.1	<200	<1
R2 #105		2	<100	6	<0.5	3	46	1.5	11.0	<10	1.8	<200	<1
R2 #106		<2	<100	6	<0.5	<2	24	0.5	3.8	<10	1.1	<200	<1
R2 #107		<2	<100	<5	<0.5	<2	<10	0.6	2.4	<10	0.6	<200	<1
R2 #108		<2	<100	6	<0.5	8	11	0.8	3.2	<10	1.2	<200	<1
R2 #109		<2	<100	6	<0.5	<2	11	1.0	4.6	<10	2.0	<200	<1
R2 #110		<2	<100	11	<0.5	12	29	0.6	12.0	<10	2.8	<200	<1
R2 #111		<2	<100	<5	<0.5	3	<10	1.0	1.2	<10	0.6	<200	<1

Bondar-Clegg & Company Ltd.
 130 Pemberton Ave.
 North Vancouver, B.C.
 V7P 2R5
 (604) 5-0681 Telex 04-352667



**Geochemical
 Lab Report**

A DIVISION OF INCHCAPE INSPECTION & TESTING SERVICES

DATE PRINTED: 13-SEP-89

REPORT: V89-04357.0

PROJECT: NONE GIVEN PAGE 1C

SAMPLE NUMBER	ELEMENT UNITS	Tb PPM	Te PPM	Th PPM	U PPM	W PPM	Yb PPM	Zr PPM	Ag PPM	Cd PPM	Cu PPM	Ni PPM	Pb PPM
2 #102		4	<29	190.0	76.5	534	8	<770	0.3	0.4	33	113	15
2 #103		6	<33	1240.0	238.0	447	<5	1200	0.1	0.5	18	91	17
2 #104		<1	<20	4.2	1.0	<2	<5	<500	<0.1	0.2	7	15	6
2 #105		<1	<20	3.5	1.7	<2	<5	<500	0.2	1.2	27	26	23
2 #106		<1	<20	0.8	2.3	<2	<5	<500	<0.1	0.7	14	20	5
2 #107		<1	<20	<0.5	<0.5	<2	<5	<500	<0.1	0.2	7	6	6
2 #108		<1	<20	1.2	2.6	3	<5	<500	0.3	1.8	31	9	15
2 #109		<1	<20	1.2	1.5	<2	<5	<500	0.3	0.6	46	11	52
2 #110		<1	<20	1.9	3.7	<2	<5	<500	0.4	3.0	57	42	8
2 #111		<1	<20	<0.5	0.7	<2	<5	<500	0.1	0.6	4	13	15



A DIVISION OF INCHCAPE INSPECTION & TESTING SERVICES

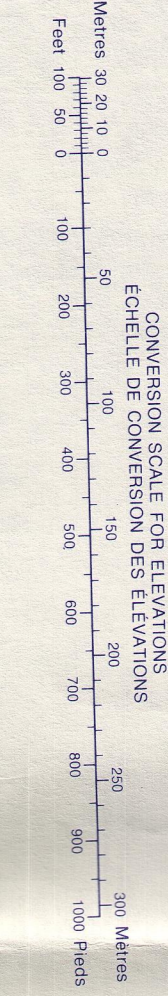
DATE PRINTED: 13-SEP-89

REPORT: V89-04357.0

PROJECT: NONE GIVEN PAGE 1D

SAMPLE NUMBER	ELEMNT UNITS	Zn PPM	B PPM	Li PPM	Al2O3 PCT	CaO PCT	Fe2O3 PCT	K2O PCT	LOI PCT	MgO PCT	MnO PCT	Na2O PCT	P2O5 PCT
C2 #102		58	45	17	4.49	1.60	59.00	0.50	1.15	1.18	0.25	0.88	0.30
C2 #103		65	11	9	1.42	0.85	89.30	0.08	<0.05	0.51	0.32	0.10	0.39
R2 #104		32	16	15	4.05	0.30	1.76	0.68	0.38	0.57	0.06	1.84	<0.01
R2 #105		305	14	26	10.40	1.45	3.22	1.28	1.59	0.89	0.05	3.42	<0.01
R2 #106		48	<10	11	3.29	44.60	1.29	0.82	36.08	1.93	0.03	0.88	0.11
R2 #107		15	16	3	1.29	0.91	0.89	0.14	0.90	0.20	0.05	0.63	<0.01
R2 #108		264	16	4	2.54	5.53	5.68	0.37	5.65	0.25	0.10	0.82	<0.01
R2 #109		85	15	5	4.19	0.26	2.07	0.34	0.77	0.22	0.02	2.29	<0.01
R2 #110		238	30	17	6.30	1.43	3.73	0.68	4.61	0.67	0.02	1.26	<0.01
R2 #111		23	22	2	1.13	11.30	1.46	0.13	10.78	1.46	0.02	0.41	<0.01

Military users refer to this map as: Réference de cette carte pour usage militaire: SERIES A 502 SÉRIE MAP 105 C CARTE EDITION 2 MCE ÉDITION



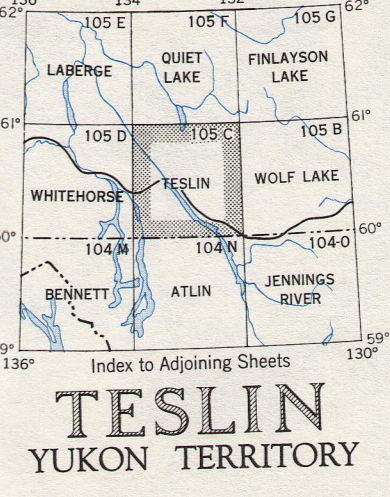
ROADS - ROUTES: hard surface - pavé, loose surface - de gravier, cart track - de terre, trail - sentier

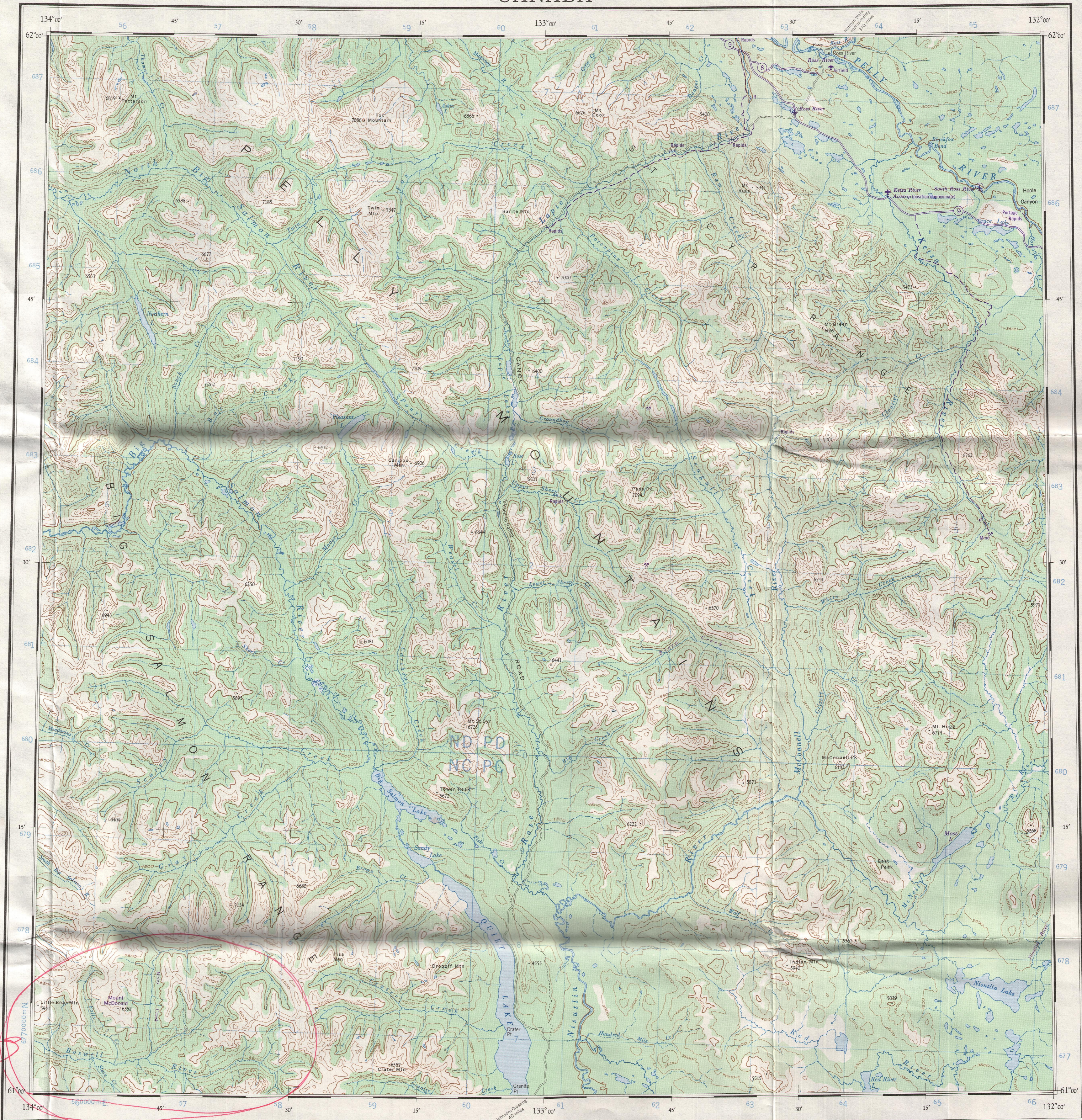
THE DECLINATION OF THE COMPASS NEEDLE 1970. Surveys in 1947 and compilation in 1950 by the Topographical Survey, from air photographs in 1948. Lithographed and printed by the Army Survey Establishment R.C.E., Department of National Defence, 1952.

Interim corrections 1979. REFERENCE table with columns for 'More than 2 Lines', '2 Lines', and 'Less than 2 Lines'. It lists various symbols for roads, boundaries, and landmarks.

Scale 1:250,000 or 1 inch = 4 miles (approximately). Includes a graphical scale bar in miles and kilometers. A grid reference box shows 'NC 9306' and '8VNC9306'.

REFERENCE table with columns for 'Building', 'Fire Lookout Tower', 'Wireless Station', etc., and their corresponding symbols.



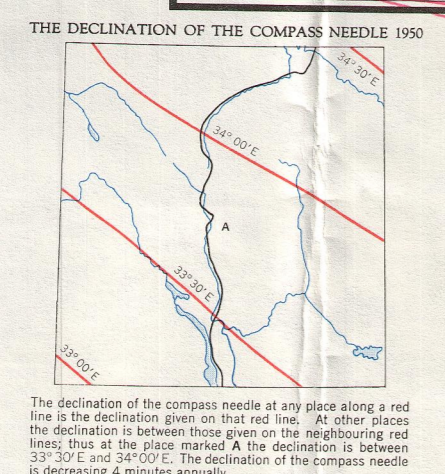


Military users, refer to this map as: Réference de la carte pour usage militaire: SERIES A502 SERIE MAP 105 F CARTE EDITION 2 MCE EDITION

ROADS - ROUTES:
 hard surface - pavée
 loose surface - de gravier
 cart track - de terre
 trail - sentier
 Deletions - Suppressions

UNIVERSAL TRANSVERSE MERCATOR GRID
 TEN THOUSAND METRE ZONE 8

1000000	500000	0	500000	1000000
6780000	6780000	6780000	6780000	6780000



Surveys in 1948 and compilation in 1950 by the Topographical Survey from photogrammetry taken in 1949. Lithographed and printed by the Army Survey Establishment, R.C.E., Department of National Defence, 1950.
 Interim Corrections 1974 (1977)

REFERENCE

Road, Hard Surface, All Weather	2 Lanes	Road, 2 Lanes	Less than 2 Lanes
Road, Loose Surface, All Weather	2 Lanes	Road, 2 Lanes	Less than 2 Lanes
Road, Special, etc.	Cart Track	Trail	Trail
Boundary, International	Survey Mon.	Survey Mon.	Survey Mon.
Boundary, Provincial	Survey Mon.	Survey Mon.	Survey Mon.
Boundary, County or District	Survey Mon.	Survey Mon.	Survey Mon.
Boundary, Township, Selgiry or Parish	Survey Mon.	Survey Mon.	Survey Mon.
Boundary, Indian Reserves, Park	Survey Mon.	Survey Mon.	Survey Mon.
Surveyed Line	Spot Elevation (in feet)	Spot Elevation (in feet)	Spot Elevation (in feet)
Railway, Standard Gauge	Abandoned	Abandoned	Abandoned
	Station	Station	Station

QUIET LAKE
 YUKON TERRITORY

Scale 1:250,000 or 1 inch = 4 miles (approximately)

Miles 5 10 15 20 25 30
 Kilometres 5 10 15 20 25 30

Copies may be obtained from the Canada Map Office, Department of Energy, Mines and Resources, Ottawa, or your nearest map dealer.
 Ces cartes sont en vente au Bureau des Cartes du Canada, Ministère de l'Énergie, des Mines et des Ressources, Ottawa, ou chez le vendeur le plus près.
 © Canada 1973, tous droits réservés

Corrections Provisaires, 1977

REFERENCE

Building	Fire Lockout Tower	Contours, Elevation
School	Wireless Station	Contours, Approximate
Post Office	Mine	Contours, Depression
Church	Clim	Wooded Area
Stream, Indefinite or Unsurveyed	Stream, Intermittent	Navigable Canal
Stream, in Dry River Bed	Bridged Stream	Ferry
Marsh or Swamp	Marsh or Swamp, in water	Lighthouse
Glacier or Snowfield	Sand, Gravel or Mud	Suspense Anchorage

