

October 19, 1990

Work Order # 08470

Bruce Patnode

Invoice for Analytical Services

Sample Preparation [Soil]	10 x \$ 1.00	=	\$ 10.00
Sample Preparation [Rock]	15 x \$ 3.75	=	\$ 56.25
Au 6 Geochem Package	25 x \$ 13.50	=	\$ 337.50
<hr/>			
Total			\$ 403.75
Less 10 Coupons			\$ 86.25
<hr/>			
Total due on receipt of invoice			\$ 317.50

PAID
SM

Thank you for using Northern Analytical Laboratories Ltd.



October 19, 1990

Work Order # 08470

Bruce Patnode

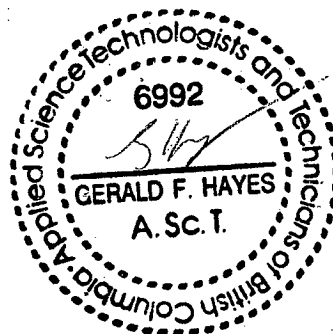
File # 08470a

Sample: Soil

Assay Certificate For Samples Provided

Sample	ppb Au	ppm Ag	ppm Cu	ppm Pb	ppm Zn	ppm As	ppm Sb
12026	211	<0.1	2	4	80	43	<1
12027	162	<0.1	92	14	379	52	5
12028	127	<0.1	176	15	154	71	4
12029	58	<0.1	17	6	54	46	2
12031	34	<0.1	<1	4	64	58	3
12032	42	<0.1	3	5	65	50	<1
12033	19	<0.1	21	3	50	61	2
12046	14	<0.1	3	1	39	66	3
12048	28	<0.1	<1	<1	33	51	<1
12049	24	<0.1	3	4	42	71	3

Au -- 15g Fire Assay/AAS
 Metals -- Aqua Regia Digestion/AAS Geochem



October 19, 1990

Bruce Patnode

Work Order # 08470

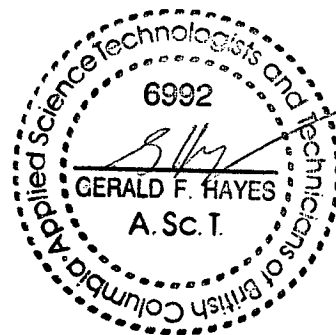
File # 08470b

Sample: Rock

Assay Certificate For Samples Provided

Sample	ppb Au	ppm Ag	ppm Cu	ppm Pb	ppm Zn	ppm As	ppm Sb
12026b	20	<0.1	68	188	215	32	8
12030	<10	<0.1	6	51	107	41	<1
12036	17	<0.1	38	77	77	33	<1
12037	<10	<0.1	42	99	179	32	4
12038	<10	0.2	1	43	51	17	63
12039	<10	<0.1	37	308	503	38	<1
12040	<10	<0.1	60	39	75	54	<1
12041	<10	<0.1	62	21	54	60	2
12042	<10	<0.1	32	16	102	120	10
12043	<10	<0.1	14	24	46	27	<1
12044	<10	<0.1	111	11	76	129	8
12045	<10	<0.1	145	12	80	125	7
12046	<10	<0.1	14	316	477	28	<1
12047	<10	<0.1	74	22	79	76	<1
12048	<10	<0.1	37	9	56	48	<1

Au -- 15g Fire Assay/AAS
 Metals -- Aqua Regia Digestion/AAS Geochem



October 19, 1990

Work Order # 08470

Bruce Patnode

Invoice for Analytical Services

Sample Preparation [Soil]	10 x \$ 1.00	=	\$ 10.00
Sample Preparation [Rock]	15 x \$ 3.75	=	\$ 56.25
Au 6 Geochem Package	25 x \$ 13.50	=	\$ 337.50
<hr/>			
Total			\$ 403.75
Less 10 Coupons			\$ 86.25
<hr/>			
Total due on receipt of invoice			\$ 317.50

PAID

Thank you for using Northern Analytical Laboratories Ltd.



October 19, 1990

Work Order # 08470

Bruce Patnode

Invoice for Analytical Services

Sample Preparation [Soil]	10 x \$ 1.00	=	\$ 10.00
Sample Preparation [Rock]	15 x \$ 3.75	=	\$ 56.25
Au 6 Geochem Package	25 x \$ 13.50	=	\$ 337.50
<hr/>			
Total			\$ 403.75
Less 10 Coupons			\$ 86.25
<hr/>			
Total due on receipt of invoice			\$ 317.50

Thank you for using Northern Analytical Laboratories Ltd.



BRUCE PATNODE
PROSPECTING NOTES

P.A.P.

April 1990

April 1/90 - June 1/90

Verbal approval from Dave Downing
y.r.g.

Started doing research

April 4/90 - Dined Research Library
for Reference.

April, 6/90 - go over TESTIN and
WHITE HORSE MAP sheets for
geological TRENDS.

April 9, 1990 - Chamber of Mines
Library. look for old maps
and reports.

April 10 1990

③ Trip out to Square Lake area. looked around a bit but it is too early. will have to wait a few weeks to get into the fields.

$$208 \text{ km} \times .26 = \$54.08$$

April 23 1990.

④ Started to go over the geochem maps and start correlating with geological maps.

April 24,

⑤ Continued correlating geochem and geological maps.

Thursday
April 26. Went out to Y.T.G. and
started to look at remote sensing
data but didn't have time to
get machine up and running

Friday

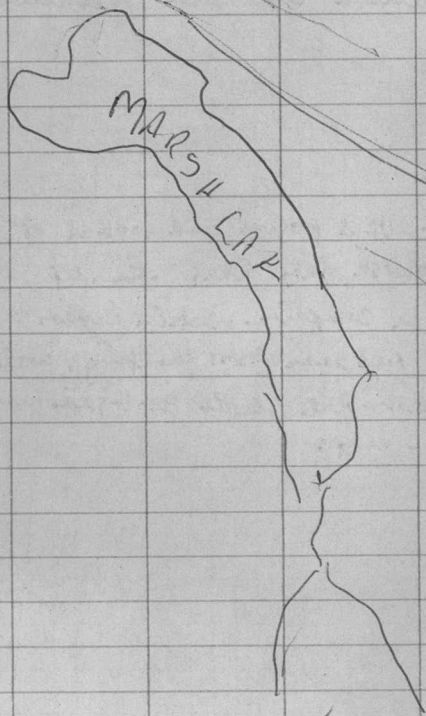
April 27. - Used program and looked at
Atlin and Marsh Lake Areas. Ran up
Marsh Lake on computer. Noticed linear trends
NW/SE and some cross faulting. Was
try to correlate with geological and
Geochem maps

Saturday

April 27.

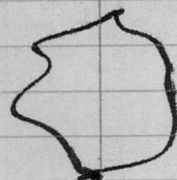
Drove out down Atlin road
but cannot get back with my vehicle
tried to see linear features
that might be showing through
but no luck.

230 Km x .26 = \$59.80



9
May 5 - Starting to get a picture
with geological, geochem. and R.S.
information. The major linear
features trending NW/SE that show
up on remote sensing. There are
some geochem anomalies that
may coincide with these
linear features. Also the
meta-volcanic series and
intrusives should prove
interesting.

Area
3



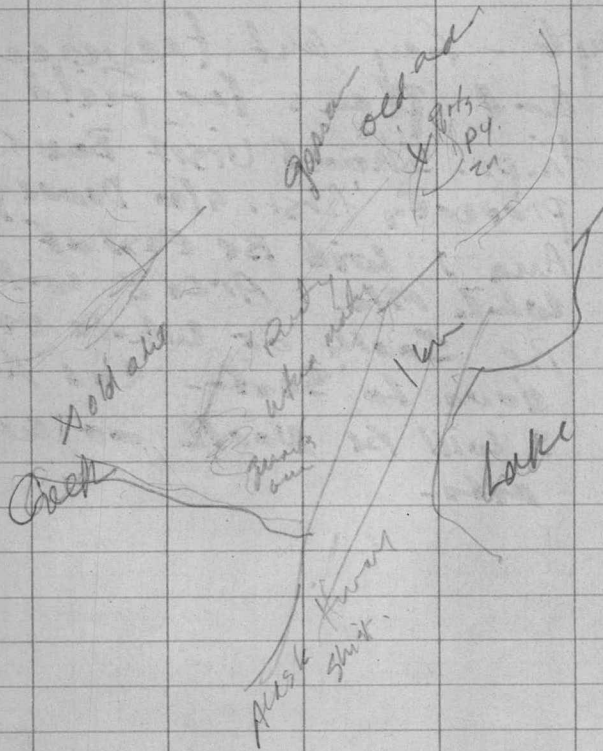
Area
1

Area
2

May 6 - Lay out traverses
and plans for field
trips. Should visit Bob Kofu
property first. also Domeykos
Area 1 will be east of
White Mts. Area 2 will
be south of White Mts
down to Saco. and Area
3 will be north of White
Mts.

May 8, 1990

get all my prospecting equipment
together. pickles, plugging hammers, pans etc.



May 3/90

Visit Brass Kopen property
at Monte Lake.

quite a bit of alteration
quartz being
^{calcs}
the rocks are quite basic in
some places (serpentine?).
A fair amount
of silicification occurs -

(12)
A Silicification may cover some of
the rocks at the southern end

There may be a trend NWSSE

at the old adit by the creek
the rocks are quite basic.

Some massive lenses of calcite
being

$$112 \text{ km} \times .26 = 29.12$$

x Mariposa Co.

Road

Highway

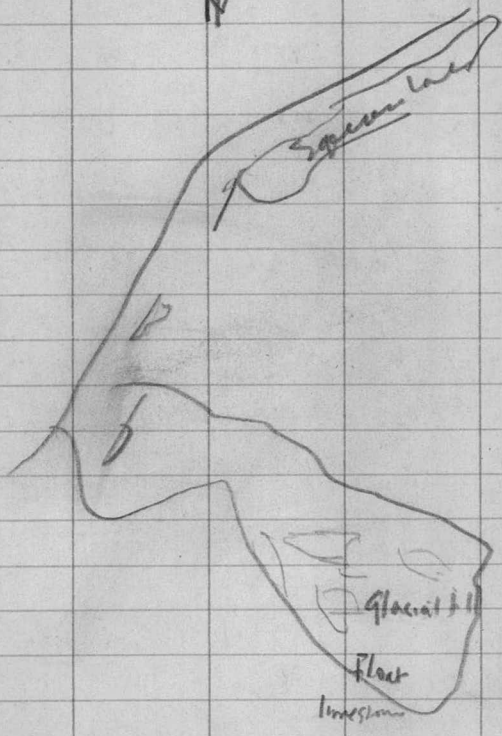
MARSH
Lake

JUNE 3, 190

Went in West Side of
highway past Judas Creek subdivision
to look at rocks in that area

(13)
green marlposite occurs
that is similar to the
Ross Bank property.

$$160 \text{ Km} \times 26 = 4160$$



June 17

- Walked in from around little lakes
east of Aquia Lake. I am looking
for evidence of N.W. trending
fault.

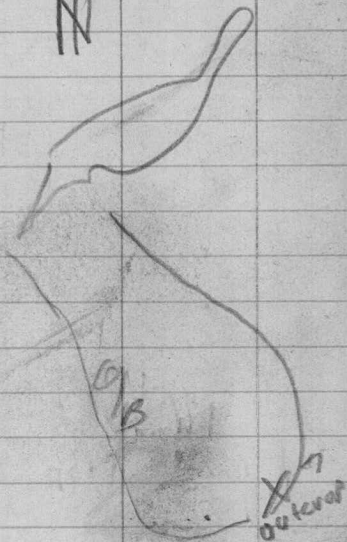
Not much vegetation so far
mostly open

(14)
Some float & mostly sedimentary
I'll head a little more east
and loop back.

No out crop - head back
mostly glaciated

208 Km x .26 = \$54.08

N



June 23

I Am heading more east. Starting
in a the west end of Swan Lake

Mostly overborder first leg in But I can
see a hill that may be outcrop to east

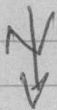
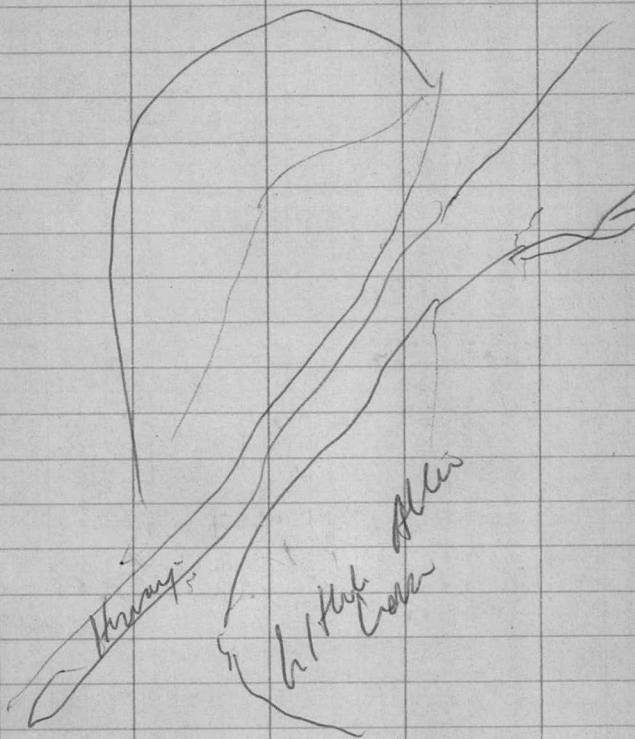
Outcrop - seems to be horizontal

No mineralization

could be a fault but it is too narrow to
tell - heading back

$$208 \text{ Km} \times .26 = 54.08$$

S



July 31 '22

- Little Allen Lake area

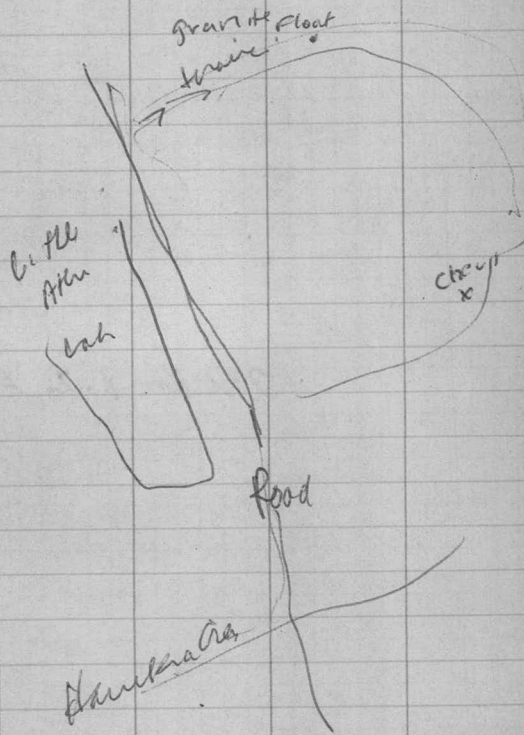
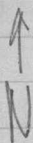
Check for linear Corrosion through
NW or Cross faults:

Mostly limestone by Highway.

(16) Higher up limestone and
argillite. Don't see any
mineralization.

Quite blocky ground but do
see any distinct linear features.

$$230 \text{ Km} \times .26 = 59.8^\circ$$



July 18/92

Traverse East side of Huray
Starting about 7 km north of
Hamsa creek.

Lots of outcrop. Some float
granite.

(11)
Mostly argillite and some chert
don't see any mineralization

230 Km X.26 = 59.80

July 22/90

traverse East side of Highway
South of Hamakua Creek

(18) Mostly Argillite with
Minor Chert - no mineralization
Except odd Pyrite cube
odd quartz stringer

No linear features that I can
identify
Some shale

230 Km X. 26 = \$59.80

July 24/90

Last traverse for this section
head in about mile 13 off on R.
Best to look for major linear.

Amphib. Some Chert. Biot Quartz Stringers
But are barren / No mineralization
Except old Pyrite ore

minor shale
No Linear.

Will move further south

230 Km X .26 = \$59.80

Aug 7/90

- Heading Back from Taetu
Lake to a geochem showing

too wet cant get Back

Soaking wet

Need a chopper

$$260 \text{ Km} \times .26 = 67.60$$

Aug 3 190

Check out old copper
showing west of McComb
I think R. Stack holds claims
this area.

Siliceous volcanic
rhyolite dacite? quartz
wearing. rhyolite dikes?
2 meters

(2)

~~128 Km x .26 = 33.28~~
128 Km .26 33.28

Mangan
Lake

Aug 8/90

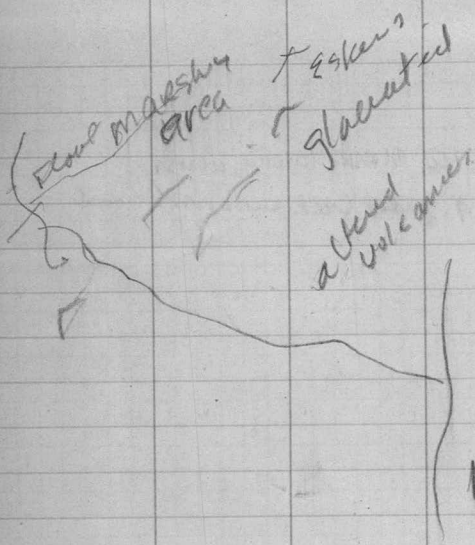
Traverse East side of the Alaska Highway across
from south exit of Jules Creek subdivision road

Mostly fakes - don't see any
significant lenses

Some float with manganese but don't know
where its from.

Can't find any outcrops.

$$176 \text{ Km} \times .26 = 45.76$$



S 29
O 6
19
14

Aug 12

Head Back into old logging road
East of Alaska Highway and back about
5 km. Try to find N.E. features.

Still too many glacial features -
Some outcrop - volcanic? But no
mineralization or major linears

(23)

$$192 \text{ km} \times .26 = 49.92$$

August 19

Headed down McClintock Creek
and back about 10 miles -
Checked for the linear - didn't
find any - This area has been
glaciated and is covered with
till.

(24)

There was one area that could have
been a wagon fault but there
wasn't any outcrops that I could
find. I won't spend any
time here.

$$122\text{Km} \times .26 = 31.72$$

September 6 1990

Check out area south/west
of Summit Lake and south of
Alaska hwy. Started off
from old Mica wave road.

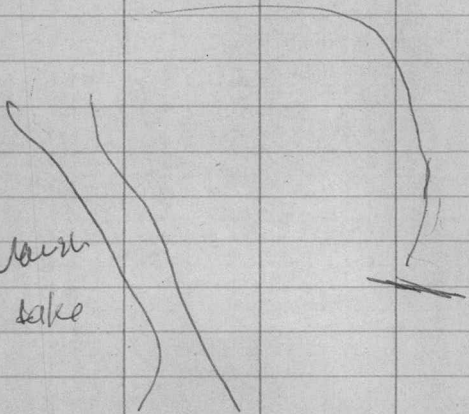
(25) There is some outcrop mostly
Sedimentary rocks? Doesn't
look too interesting - Won't spend
any more time here.

$$224 \text{ Km} \times .26 = 58.24$$



North
lake

Home



Sept 26

traverse east side of marsh
lake -

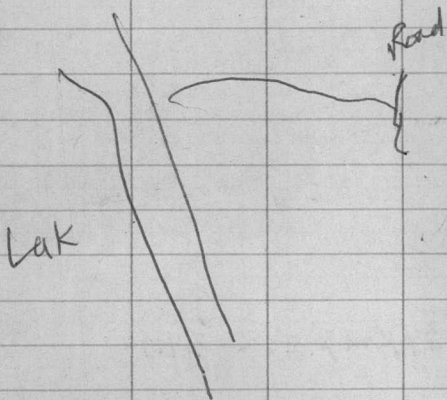
Volcanic, some sedimentary
rocks

(26)

Some faulting E-W. to be
checked in the day to check. But I will
go in maybe tomorrow and
follow it to the east.

134 Km x .26 = 34.94

N ↑



Lake

Road

Sept 29.

Follow E-W. Fault to the East

this is a fairly big break

Ran into an old road - will follow it south - it must go back to Highway.

(27)

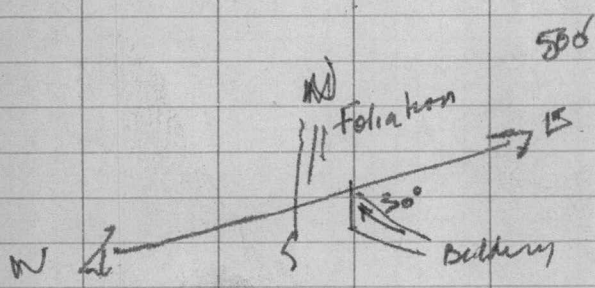
these rocks look fairly silicious

Back at Highway

Come back this week

$$134 \times .26 = 34.94$$

Km



Oct 4/90

ON E-W fault
About 5 km at Alaska Highway
East of Marsh Lake and about
4 km South Jocas Creek sudon on

Rocks very siliceous
gts and calcite stringers

(28) This Breccia is at least 500 ft wide

Broke quite a few rocks - some fine grained
mineralized - some graphite

Come back tomorrow.

Skiff of man

$$158 \text{ km} \times .26 = \$39.00$$

Oct. 5.

Followed Break further east - still
very silicious, - there is an apple green
mineral in the matrix - it might be malposite
But it seems quite silicious.

29
Break still E-W and about same width

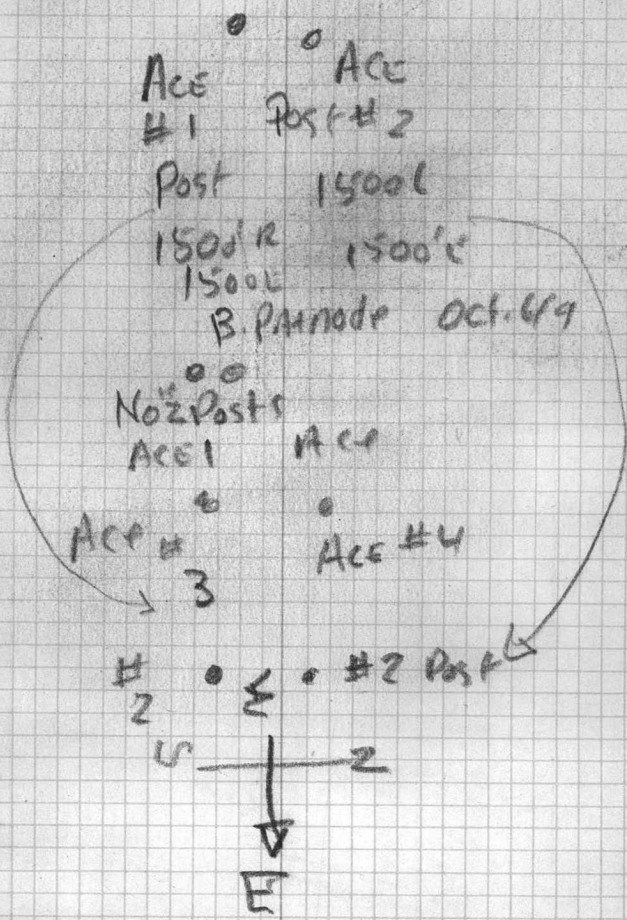
think I'll stake this tomorrow

150 km x .26 = 39.00

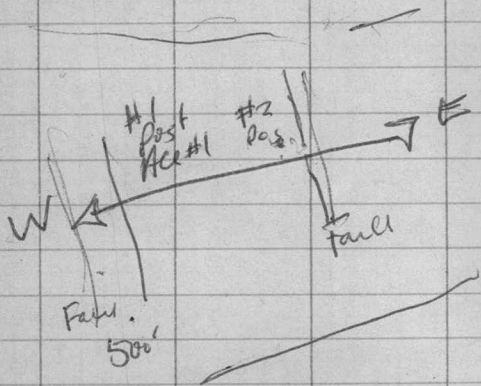
Oct 6,

Stake 4 Claims heading E.

30



$$150 \times .26 = 39.00$$



October 13

Prospecting to the ^{west} east of
Ace group. Rocks are still

silicious. Strange looking
outcrop - look something like
a Breccia - very silicious.

Rocks a rusty in spot.

Think I will tie on a
few more claims tomorrow
the weather is getting prettier
Bad.

150 x .26 = 39.00

Oct. 14

Tie on 2 more claims

ACE 5 and Ace #6

#2 Post ^W #2 Post

Oct. 14/9d

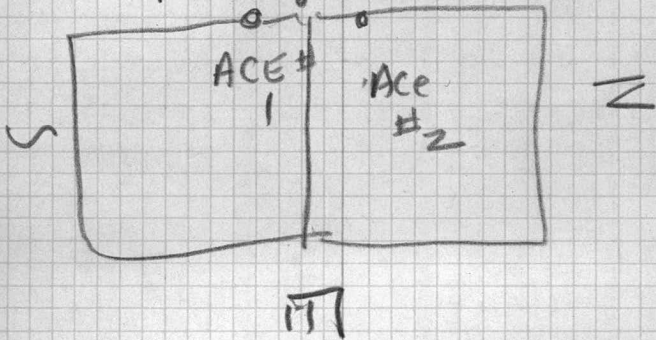
B. Patnode

1500' L

1500' R

ACE #5

ACE #6

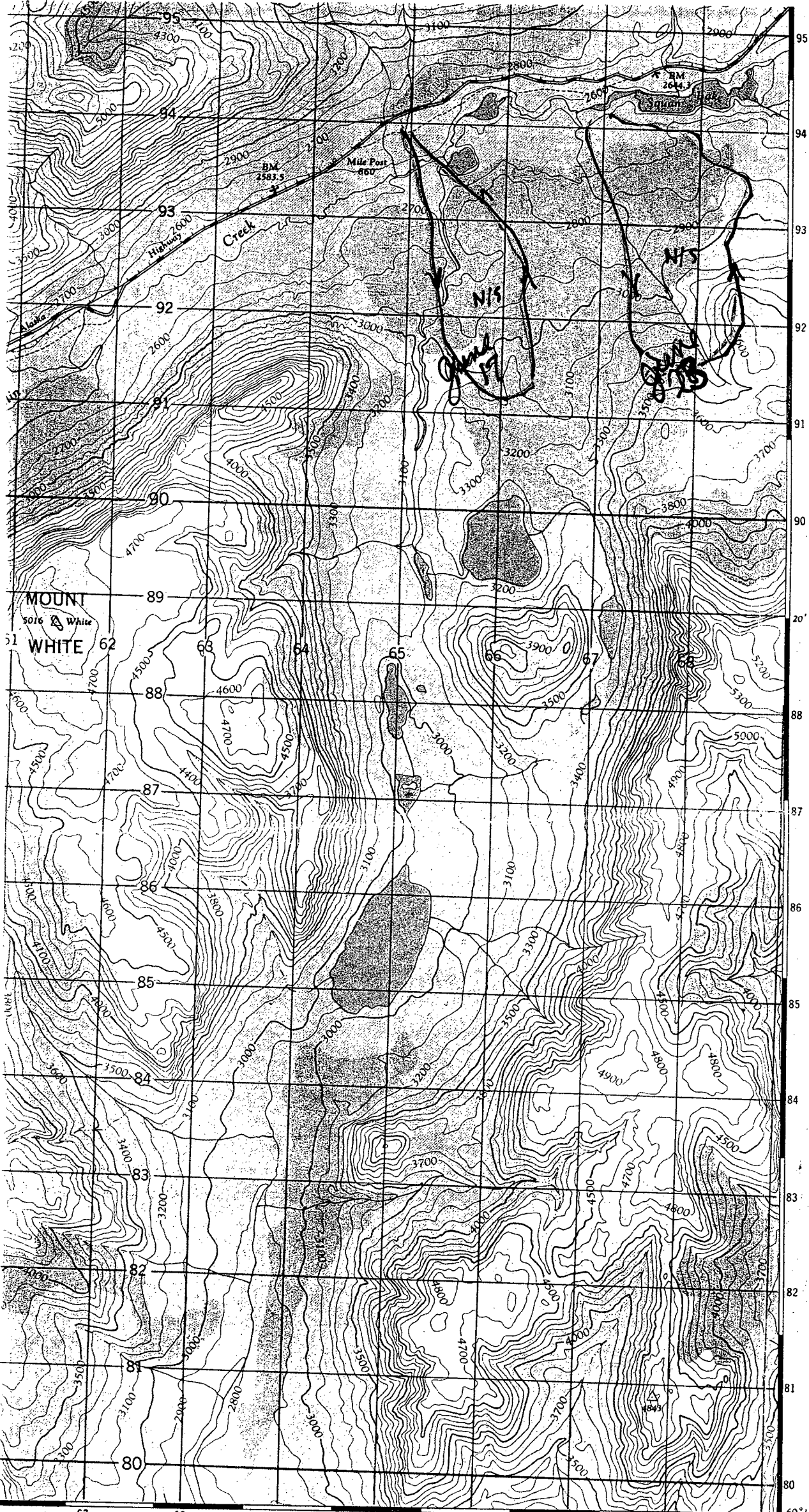


lots of snow

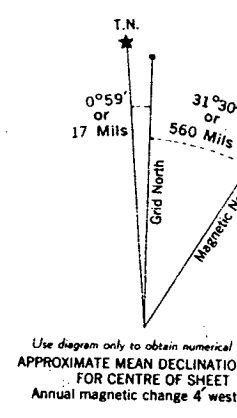
150 km x 267 39

Day 33

- Wrap up activities



... ..
 Contours, elevation
 .. depression
 .. approximate
 Relief, not indicated by Contours
 Wooded Areas, heavy
 .. light



TO GIVE GRID REFERENCE ON THE FIGURES. IGNORE the SMALLER figures printed of the map. These are for finding the full co-USE ONLY THE LARGER FIGURES PRINTED IN ON THE FACE OF THE MAP. Viz. 6680

POINT BENCH MARK	
FOR STANDARD MILITARY GRID REFERENCE	
East	North
Take West edge of square in which point lies, and read the figure printed opposite this line on North or South margin or on the line itself on the face of the map. Estimate tenths Eastwards.	Take South edge in which point lies; this line on East margin or on the line itself on the face of the map. Estimate tenths Northwards.
56	8
East	568
STANDARD MILITARY GRID REFERENCE 568894 (To read)	
Nearest similar grid reference - 100,000 Metres (Approx)	

ONE THOUSAND METRE UNIVERSAL TRANSVERSE MERCATOR ZONE 8

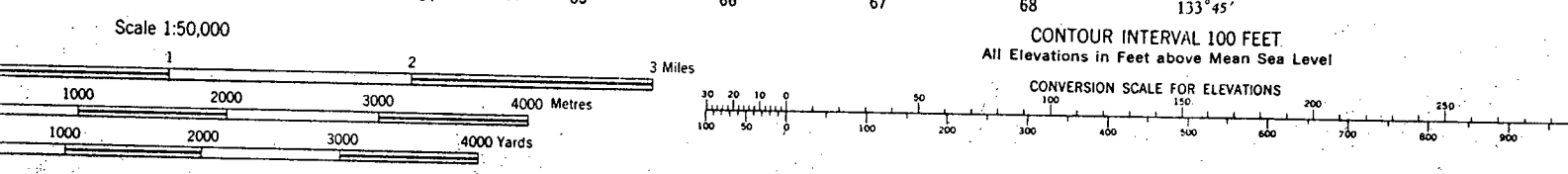
INDEX TO ADJOINING SHEETS

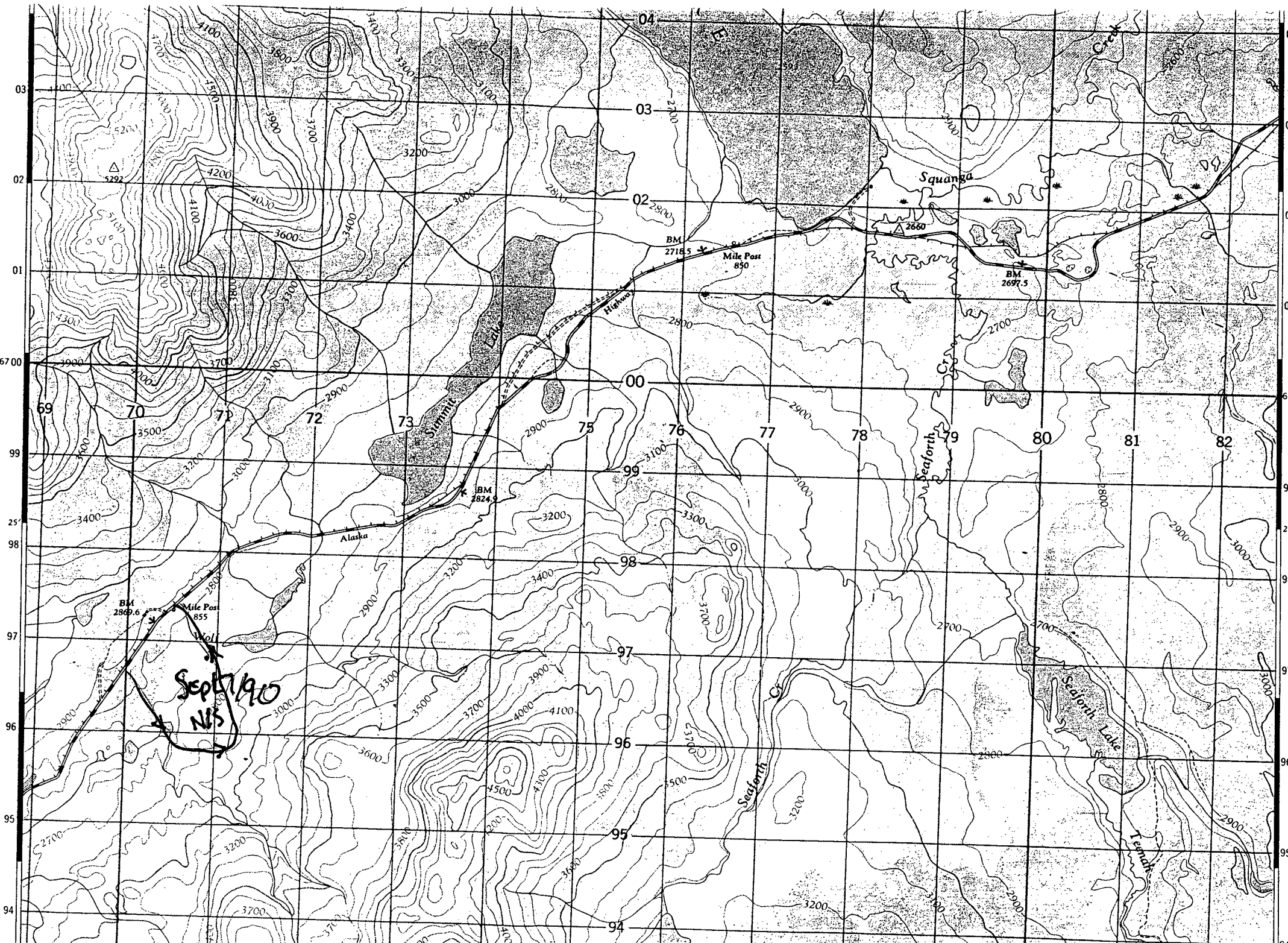
134°30'	133°30'	
105 D/9	105 C/12	105
105 D/8	105 C/5	105
105 D/7	105 C/4	105
60°30'	60°00'	

See "Index to Maps Available for sheets published."

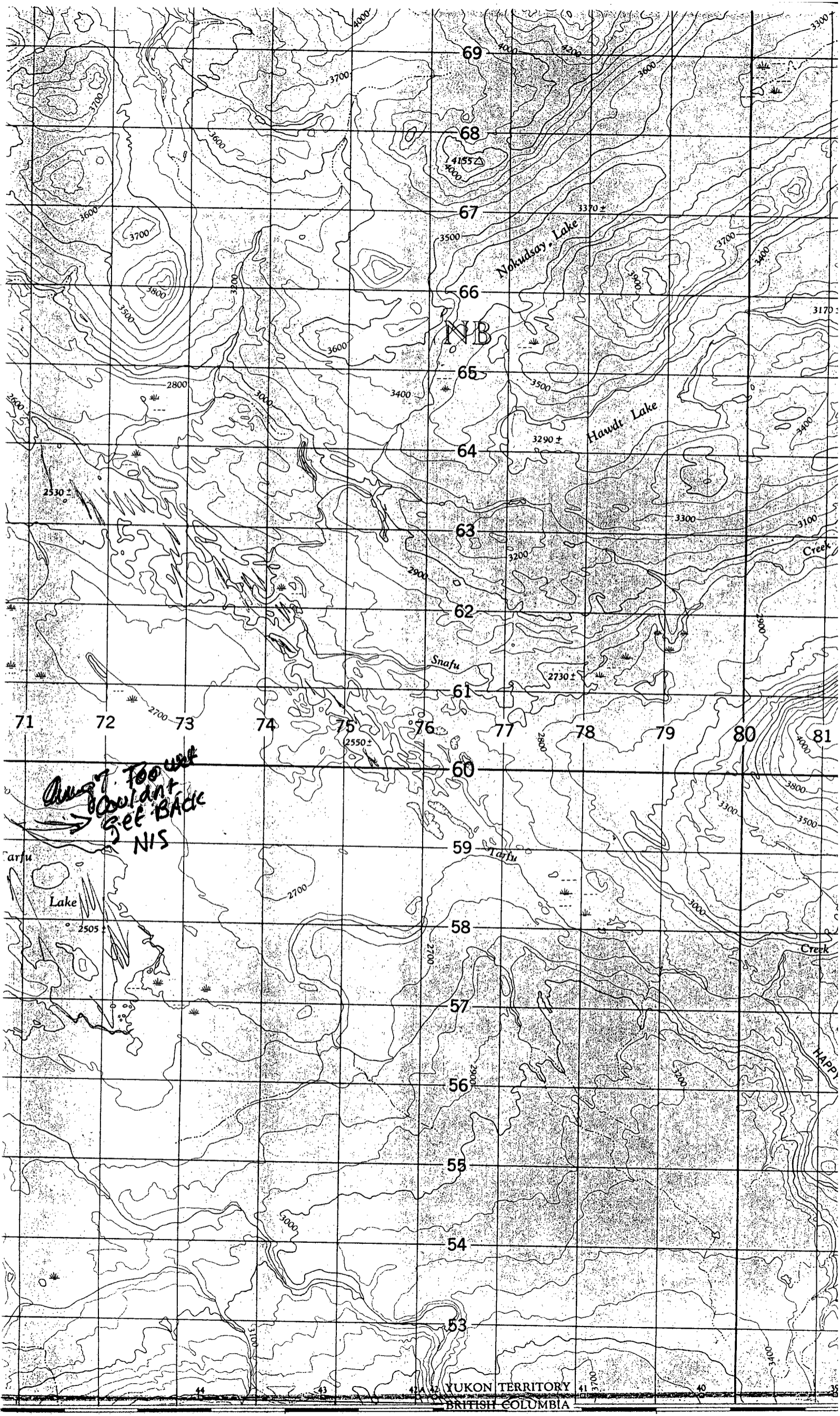
Note: Copies of this map required for purposes may be obtained from the Army Est. AHQ, Ottawa. The general public may obtain copies from Map Distribution Office, Dept. of Mines and Surveys, Ottawa, at 25 cents per copy.

SQUANGA LAKE
 YUKON TERRITORY
105 C/5 WEST HALF
 FIRST EDITION



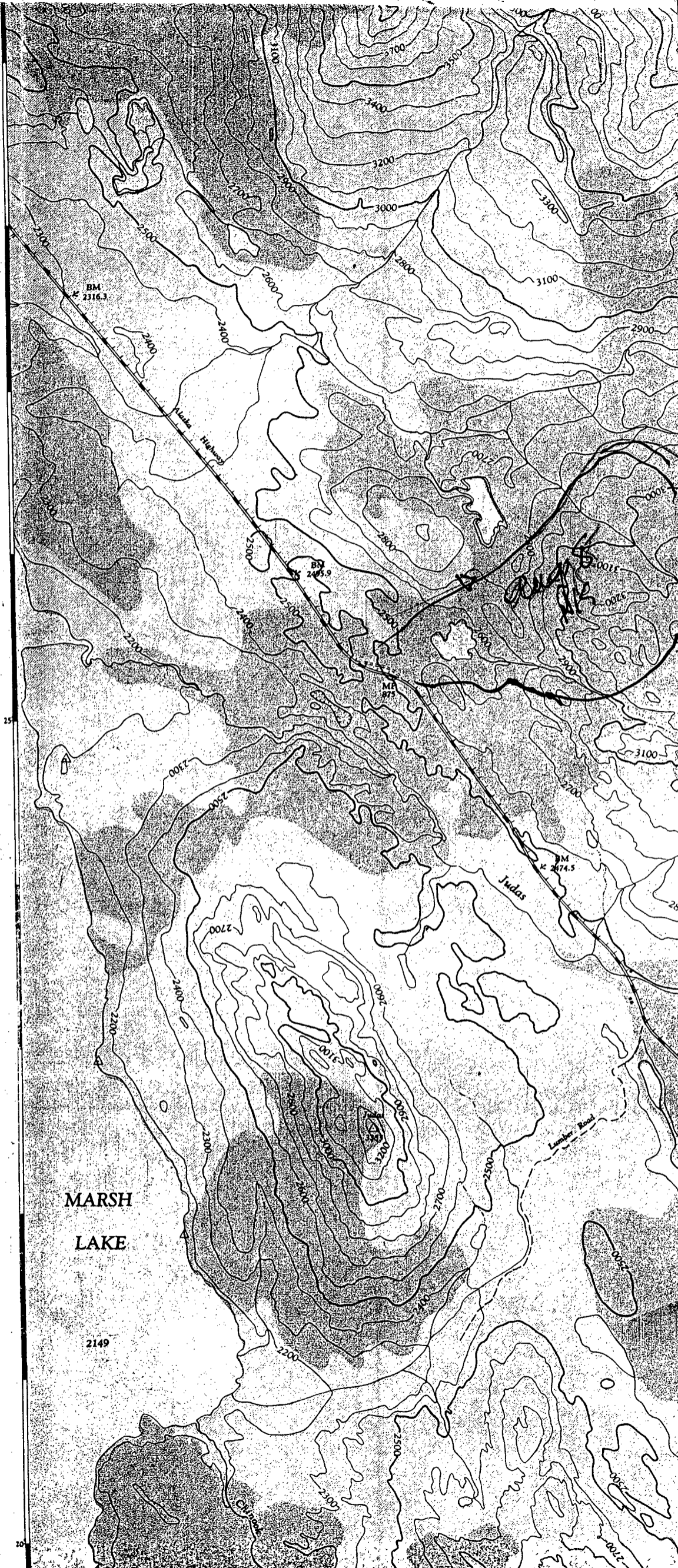


loose su
 loose su
 Cart Tr
 Special
 Railwa
 standar
 standar
 narrow
 Tramw
 Bridge
 Bound:
 ...
 ...
 ... R
 Electric
 Teleph
 Triangu
 Bound:
 Bench
 Spot E
 House.
 Buildin
 Mill or
 School
 Church
 ...
 Post O
 Teleph
 Mine c
 Cemet
 Quarry
 Sand o
 Cliff ...
 Cutting
 Emban
 Lighth
 Wharf
 Foresh
 Swamp
 Lake o
 Glacier
 Stream
 Irrigati
 Inunda
 Contou
 ...
 ...
 Relief
 Woodc



NB

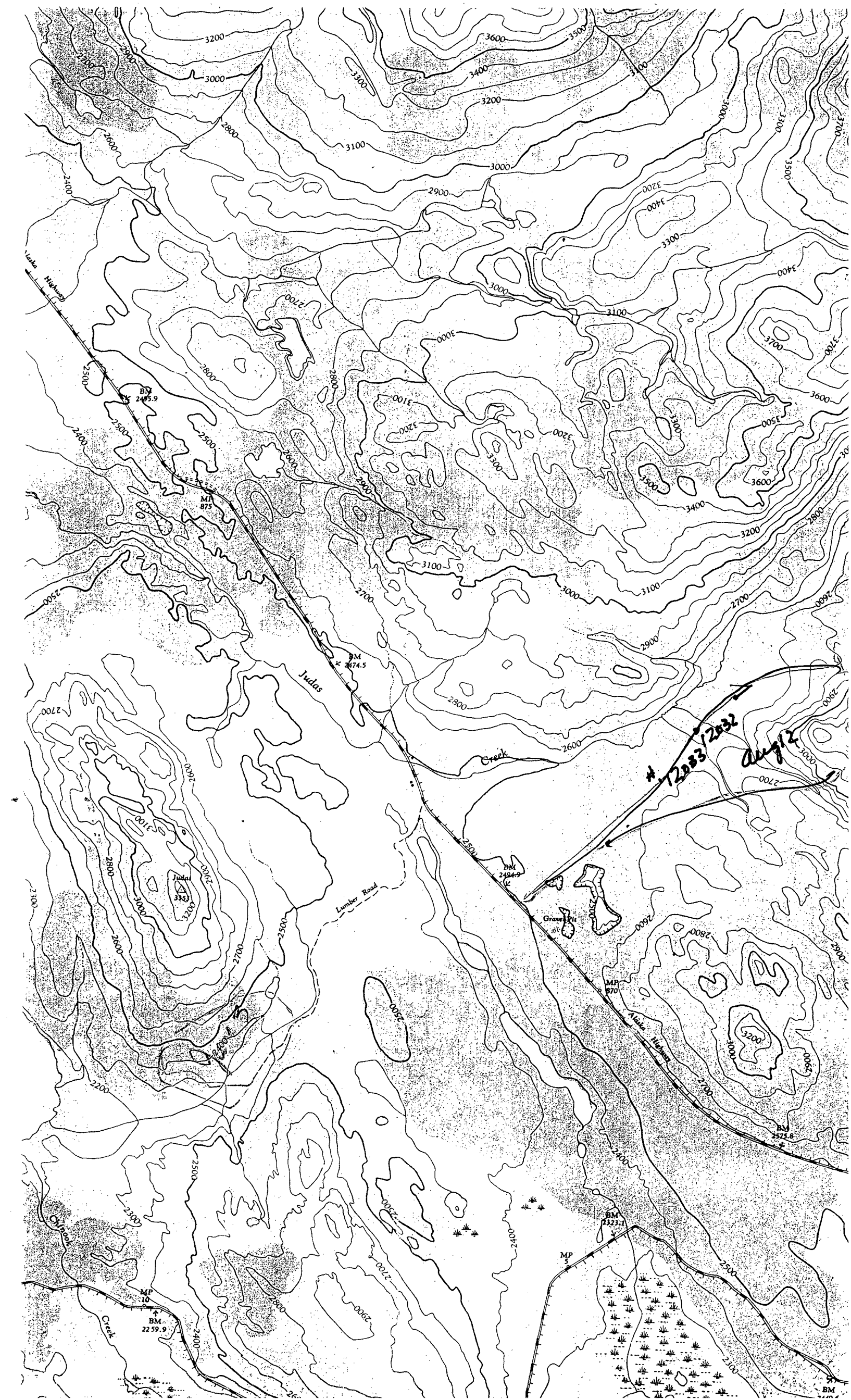
*August 7th 1904
couldn't
get back
NIS*



MARSH
LAKE

2149

Chapman



Lake Highway

Judas

Creek

Lumber Road

Grave Pit

Main Highway

MP 10

MP 5

12083/2032

Aug 12

BM 245.9

MP 875

BM 2474.5

BM 2484.4

MP 870

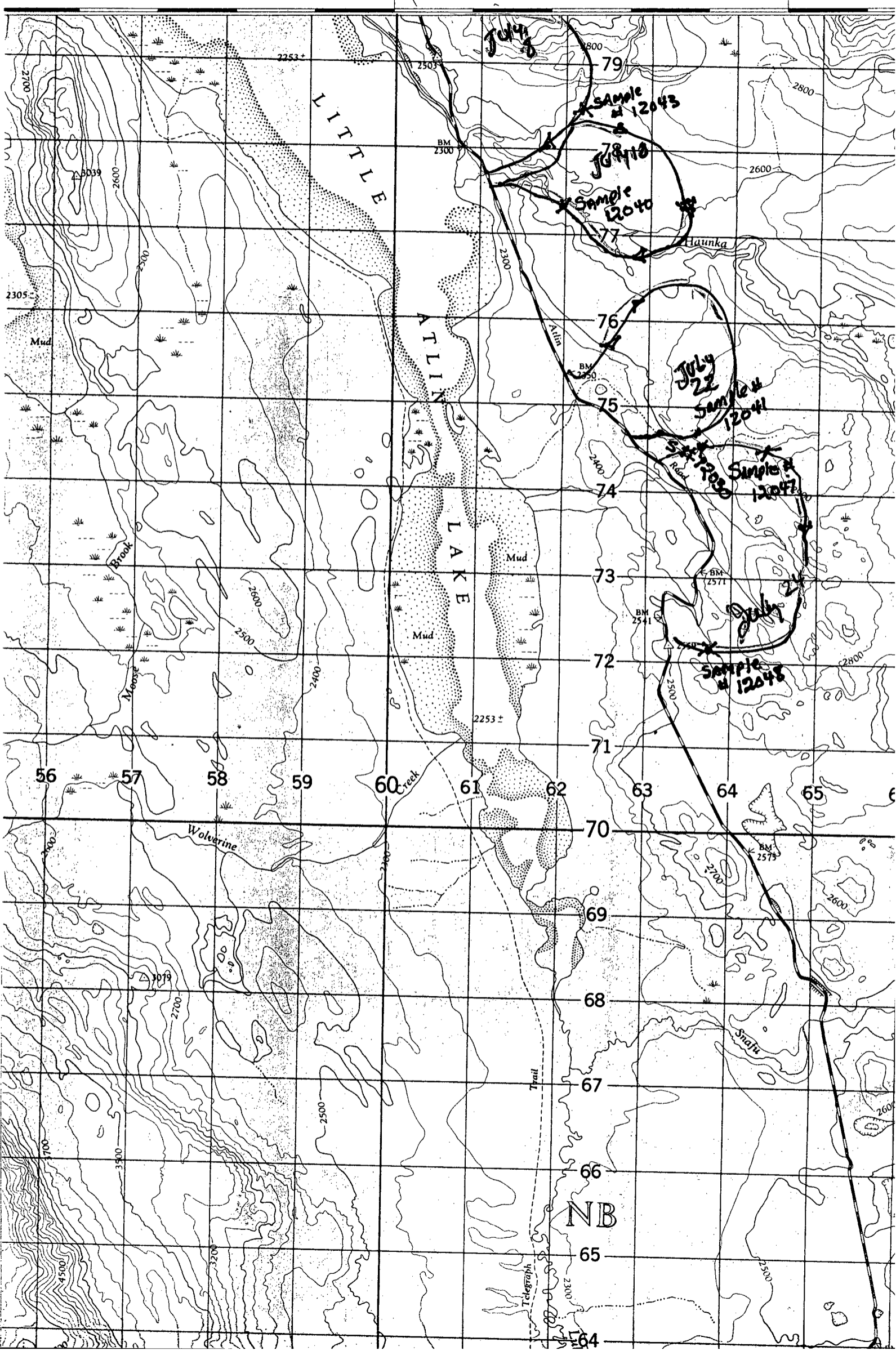
BM 2572.8

BM 1323.7

BM 2259.9

BM

00' 56 57 58 59 Whitehorse 50m 61 62 63 64 50' 65



TO GIVE GRID REFERENCE ON THIS SHEET, IGNORE the SMALLER figures printed around it of the map. These are for finding the full co-ordinate; USE ONLY THE LARGER FIGURES PRINTED IN THE MARGIN ON THE FACE OF THE MAP. Viz. 6708

POINT HOUSE	
FOR STANDARD MILITARY GRID REFERENCE	
East	North
Take West edge of square in which point lies, and read the figure printed opposite this line on North or South margin or on the line itself on the face of the map. Estimate tenths Eastwards.	Take South edge of square in which point lies, and read the figure printed opposite this line on East or West margin or on the line itself on the face of the map. Estimate tenths Northwards.
31	2
312	
STANDARD MILITARY GRID REFERENCE 312110 (To nearest 10)	
Nearest similar grid reference - 100,000 Metres/Approximately	

ONE THOUSAND METRE
UNIVERSAL TRANSVERSE MERCATOR
ZONE 8

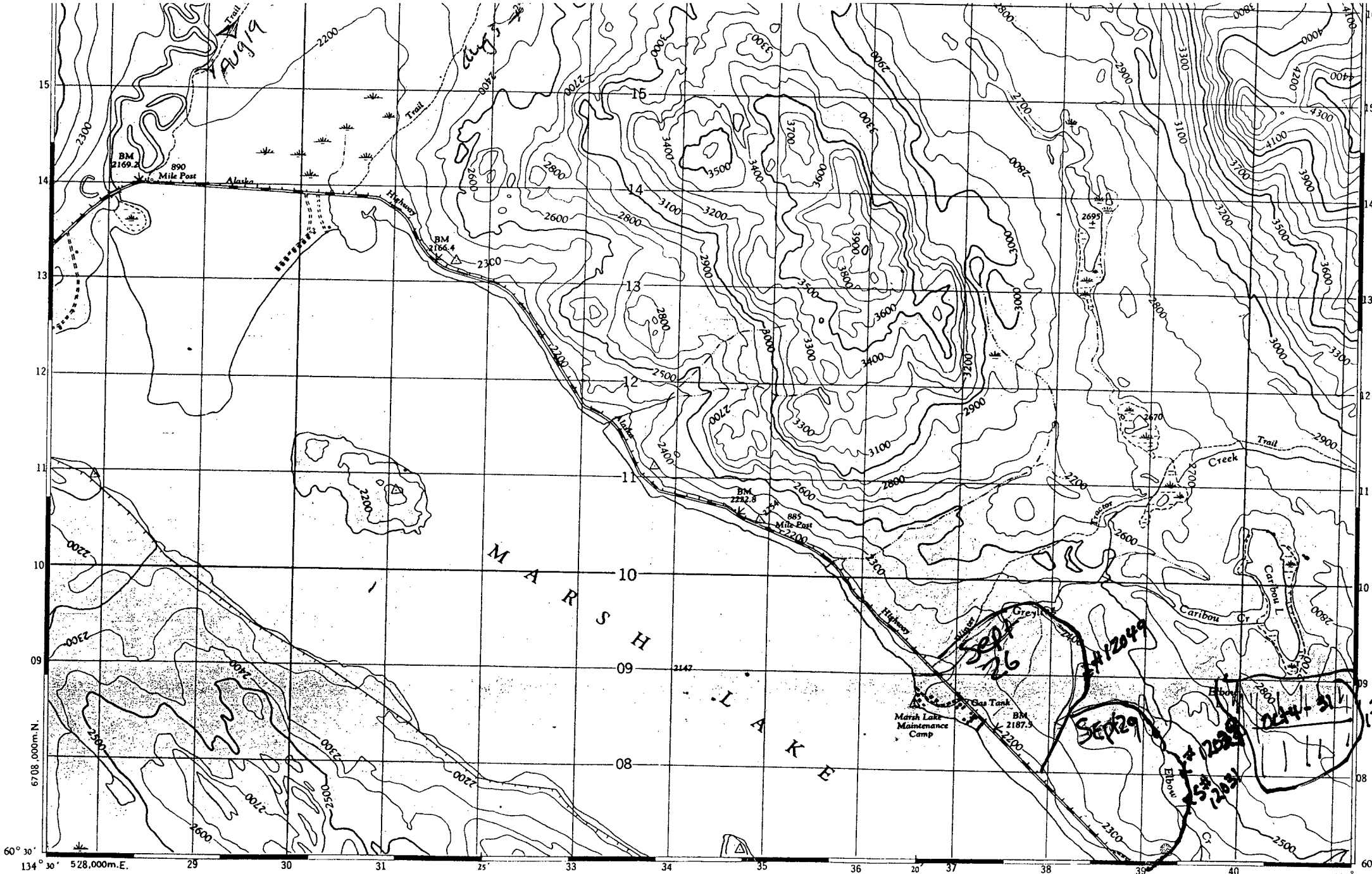
INDEX TO ADJOINING SHEETS

135° 00'	105 D/15	105 D/16	105 C
	CAP CREEK		
60° 45'	105 D/10	105 D/9	105 C
	MACRAE	MICHIE CREEK	STREAK M.
60° 15'	105 D/7	105 D/8	105 C
	LANDSLOWNE	TAGISH	SQUANGA LAKE

See "Index to Maps Available" for sheets published.

The general public may obtain copies of this map from the Map Distribution Office, Dept. of Mines and Technical Surveys, Ottawa, at 25 cents per copy.

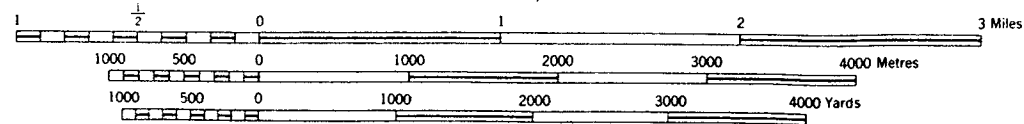
MICHIE CREEK
YUKON TERRITORY
105 D/9 WEST HALF
FIRST EDITION



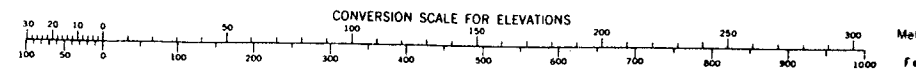
Surveyed, compiled, drawn and printed by the Army Survey Est. R.C.E. 1950-53
Aerial photography by R.C.A.F. 1946-48

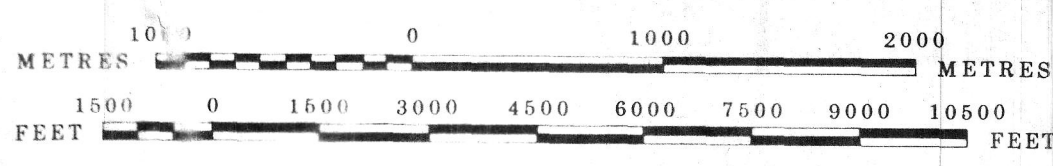
MAGNETIC DECLINATION 32° 14' EAST
AT CENTRE OF SHEET, 1953
Annual magnetic change 4' westerly

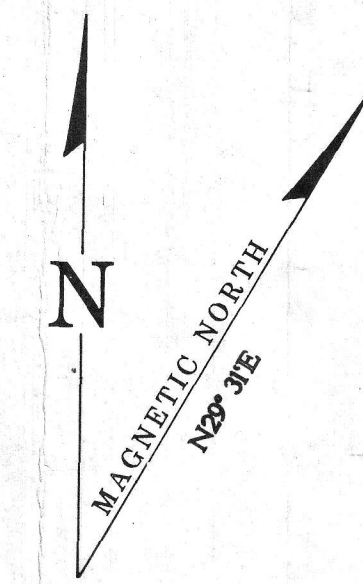
Scale 1:50,000



CONTOUR INTERVAL 100 FEET
All Elevations in Feet above Mean Sea Level



105D-9
QUARTZ & PLACER
 LATITUDE 69°30' TO 69°45'
 LONGITUDE 134°00' TO 134°30'
 ISSUED UNDER THE AUTHORITY OF THE MINISTER
 OF
 INDIAN AFFAIRS AND NORTHERN DEVELOPMENT
 SCALE 1:30,000




NOTE:
 THIS MAP IS ISSUED AS A PRELIMINARY GUIDE
 FOR WHICH THE DEPARTMENT OF INDIAN AFFAIRS
 AND NORTHERN DEVELOPMENT WILL ACCEPT NO
 RESPONSIBILITY FOR ANY ERRORS, INACCURACIES
 OR OMISSIONS WHATSOEVER.
 TOPOGRAPHY COMPILED FROM 1:50,000
 NATIONAL TOPOGRAPHIC SERIES.
 CONTOUR INTERVAL 500 FEET.
 SURVEY INFORMATION COMPILED FROM
 LEGAL SURVEYS, BY DRAFTING SERVICES.
 Note: Entry on certain lands is withdrawn from staking
 in cross-hatched areas to facilitate the settlement
 of Native Land Claims without prejudice to Existing
 Surface and Subsurface Rights.

105D-15	105D-16	105C-13
105D-10	105D-9	105C-12
105D-7	105D-8	105C-5

Canada

WHITEHORSE 15 JUNE 1990

