

✓

Aug. 17/90 to Aug. 30/90

McQueen Valley, Forty-mile Creek Area.

4 test holes and 1 trench was put in.

The gold that was found was very small, but chunky, used 20 power glass to see it.

Trench #4 -  $111' \times 9' \times 18 \text{ ft.} = 37 \times 3 \times 6 \text{ yd.} = 666 \text{ cu. yd.}$   
Holes approx. -  $15' \times 9' \times 18 \text{ ft.} = 5 \times 3 \times 6 \text{ yd.} = 90 \text{ cu. yd.}$   
4 holes and 1 trench = 1026 cubic yard.

Road had to be rebuilt from camp to creek, 800 ft. Washed out by spring run off, approx., 250 cubic yards to rebuilt. 5 yards put through sluice box.

Each hole is stripped  $50' \times 50' \times 1' = \text{approx. } 93 \text{ cu. yd.}$   
Trench is stripped  $150' \times 75' \times 1' = \text{approx. } 400 \text{ cu. yd.}$

Total, Dirt moved 2717 cubic yards.

Equipment - Backhoe -  $\frac{1}{2}$  yard bucket.

10 working days. (at 10 hours per day.)

Fuel approx. 4 - 45 gal. drums.

Hydraulic fluid - 4 pails.

Men on property.

Operator

Cook

Engineer

Helper - Go between.

2 days moving in.

2 days moving out.

Total days on property - 14 days.

Signature project engineer.

Mydra Curran



MAP SHEET 115P-10

84 NW

T. 1 N

80

76

72

68

64

60

56

52

48

44

1 inch = 400 ft

5 Miles

PL 8417

CLAIM LINE

CLAIM #5  
YB02742

CLAIM #4  
YB02741

CLAIM #3

15x9x18 = 90 cu yards

40 striping 93 cu yards

YB027

15

Miles

Creek

Road

15x9x18

Pit #1

90 cu yards

YB02739  
#2

0

4

8

12

36  
32  
28  
24  
20  
16  
12  
8  
4  
0

CLAIM #2  
YB02739

CLAIM #1  
YB02738

PL 8417  
5 Miles

Forty miles

Creek

Road

trench # 4 4x120x18 ft

666 curyards  
Striping 400 curyards

PIT'S  
15x9x18 ft #  
180 curyards

Road Repaired  
250 curyards

PENTICTON  
#1  
YB02043

cutline

BEADY - Load

Camp

POST #1

Road

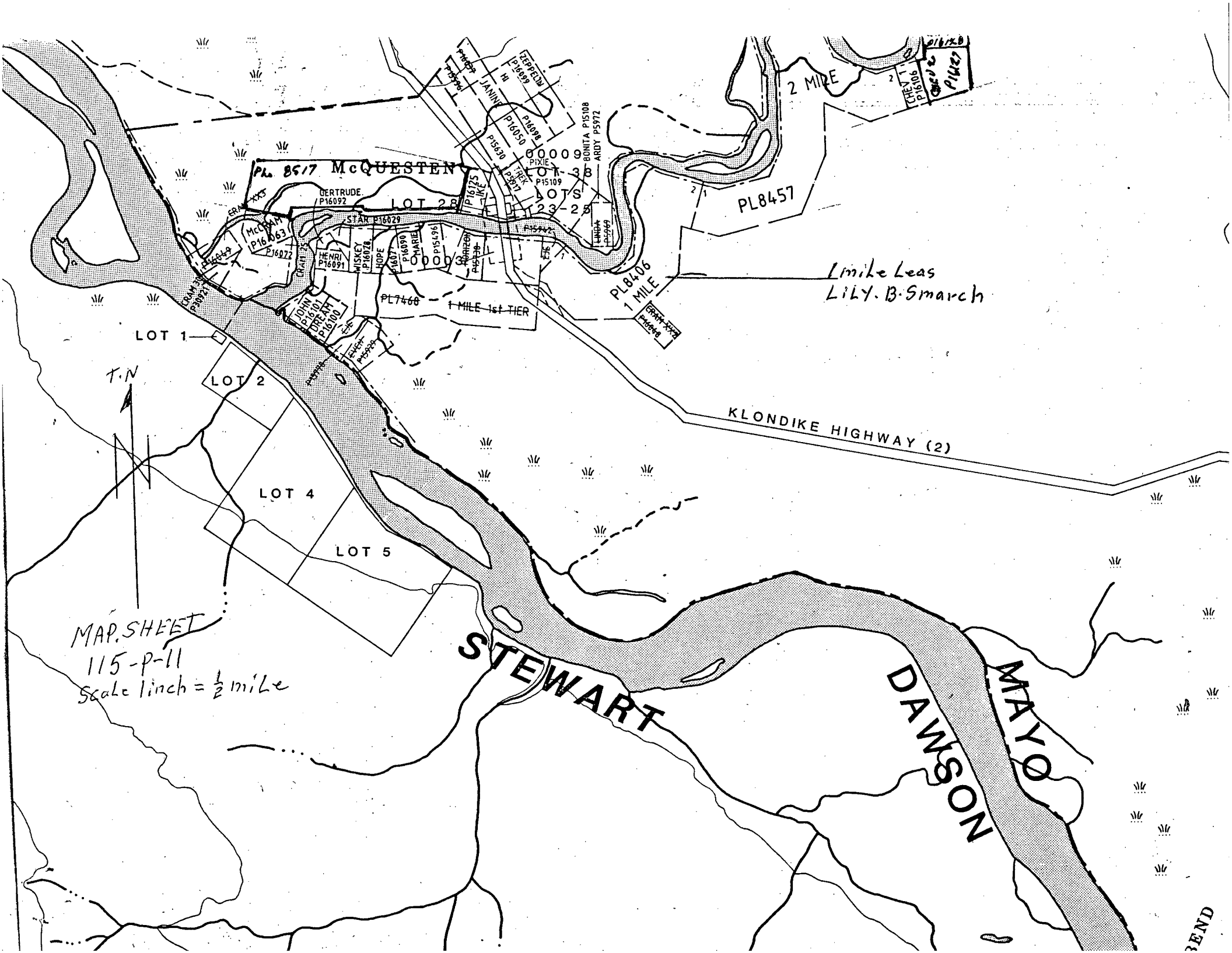
Mc-QUESTEN

1 inch = 400 ft

T.N

0 4 8 12 16





MAP SHEET  
115-p-11  
Scale 1 inch = 1/2 mile

1 mile Leas  
LILY. B. Smarch

STEWART  
DAWSON  
MAYO

KLONDIKE HIGHWAY (2)

LOT 1

LOT 2

LOT 4

LOT 5

Pl. 8517 McQUESTEN

GERTRUDE  
P16092

LOT 28

STAR  
P16029

MCCANN  
P16063

HENRI  
P16091

WISKEY  
P16078

HOPE  
P1607

MABLE  
P16090

ODDY  
P16096

PL 7468

1 MILE 1st TIER

PL 8406

1 MILE

PL 8457

2 MILE

T.N

BEND

Map Sheet # 115-P-11  
Assessment Work  
1. Mill River Lease # PL 8406  
Aug. 11/90 to Aug. 16/90

Equipment used 780 Loader Backhoe

\$75.00 per hour - Machine and Operator.

3 days at 8 hours per day \$1,800.00

Hand sluicing - 5 cu. yards \$100.00

Man hours - 5 days.

1 man. \$250.00

1 cook. \$250.00

Proceries. \$100.00

Transportation. \$200.00

Total = \$2,700.00

Mepl. V. Currie

1 mile Leas

MC QUESTEN RIVER

POST # 2  
P. 18406  
1 MILE LEASE

POST # 1  
P. 18457  
2 MILE LEASE

STRIPI NG  
99 X 57 X 0.5 FT =

167.3 cu yards



4.5 X 9 X 15 FT.  
= 292.5 cu yards

TRENCH

SCALE = 100 FT TO 1 INCH  
MAP SHEET N15P-11

EQUIPMENT 780 BACKHOLE

Trenching 625 cu yards

Striping 336.6 cu yards

Road



1 Mile Leas

750ft  
to Bridge

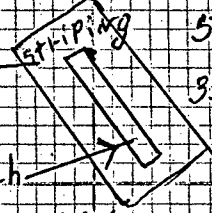
← McQUESTEN RIVER

Post #1  
PL 8406 1 Mile Leas

OVER FLOW Stream

Boag

Trench  
60x12x15 ft  
= 400 cu yard



51x99x8 = 168.3 cu yards  
93x17x0.34 =

Scale 1 inch = 100 ft  
MAP SHEET 115 P11





Mc QUESTEN RIVER 2 Mile Leas

Over Flow Stream

Post #1  
PL 8457

2 Mile Leas

striping 99x99 ft = 326 cu yard  
Trench 60x12x18 ft = 480 cu yard

25 cu yard  
Moved for Road

Road

X-N

Scale 1 inch = 100 ft

MAP SHEET 175 P-11

Blaised Line

Test Hole  
12x12x15 ft  
= 90 cu yard

Striping 51x51 ft  
= 57 cu yard

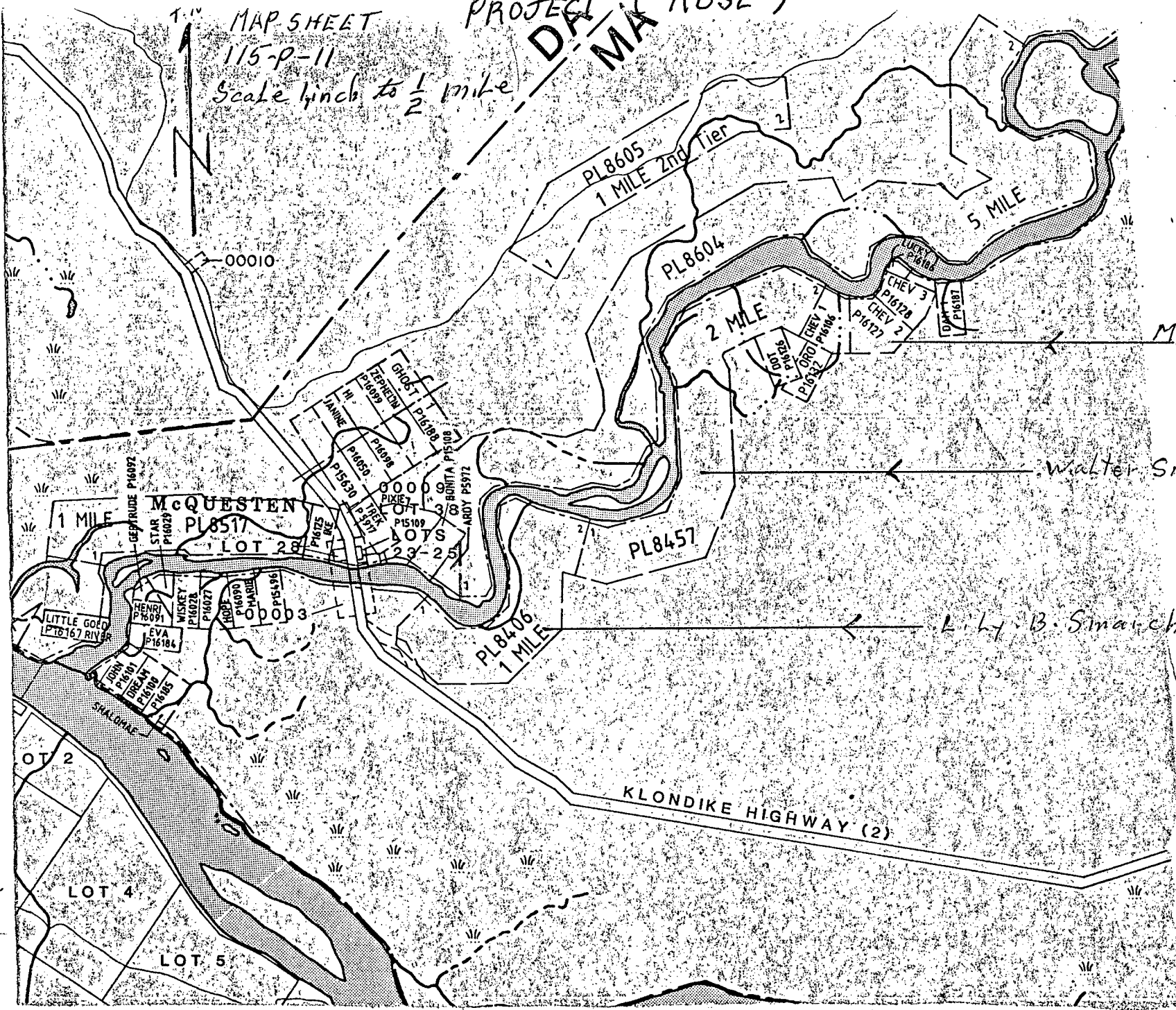
EQUIPMENT 780 Back Hoe

total striping 408 cu yard  
Trench's Hole 560 cu yard

Road

MAP SHEET  
115-P-11  
Scale 1 inch to 1/2 mile

PROJECT (ROSE)  
DF MA



MYRL V. CURRIE

Walter Smith

Lily B. Smarch

Mc Questen River

Mc Questen River

River

High water over flow

POST #1

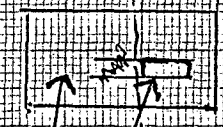
POST #2

POST #1

POST #2

POST #1 2

Over Flow Stream  
Stream

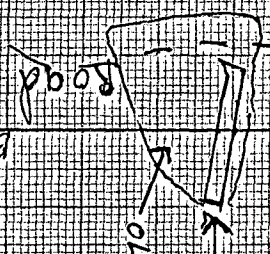


Trench 12x15x9 ft = 60 cu yard  
Road  
Striping 99x51x0.6 ft = 168.3 cu yard  
Blas Hole 99x99 ft = 27 cu yard

CHEV #1  
P16106

Scale 1 inch = 100 ft.

MAP SHEET 115-P-11



Trench 54x12x16 ft = 360 cu yard  
old striping  
CHEV #2  
P16127

Equipment 980 Buck Hoe

Trenching & Test Hole 519 Cu yard

Striping 590.3 cu yard

Road 40 cu yard  
Blas Hole 40 cu yard



Striping 51x99x0.6 ft = 336 cu yard

Test Hole

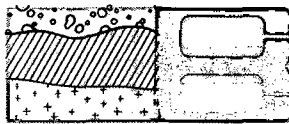
12x9x18 ft = 72 cu yard

Striping 51x59x0.6 ft = 86 cu yard

Chev #3 P16128







REPORT: V90-36269.4 ( PARTIAL )

REFERENCE INFO:

CLIENT: MYRL CURRIE  
 PROJECT: NONE GIVEN

SUBMITTED BY: M. CURRIE  
 DATE PRINTED: 24-OCT-90

ORDER	ELEMENT	NUMBER OF ANALYSES	LOWER DETECTION LIMIT	EXTRACTION	METHOD
1	Au Gold	5	0.002 OPT		Fire Assay
2	Au Mg Total Mg Gold	4	0.002 MG		Fire Assay

3 Weight Sample Weight 0.1 gm 4 0.1 GM  
 RESULTS TO FOLLOW FOR: Ir Os Pd Pt Rh Ru Pd Pt Rh

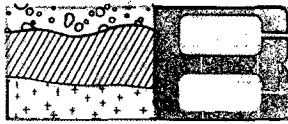
SAMPLE TYPES	NUMBER	SIZE FRACTIONS	NUMBER	SAMPLE PREPARATIONS	NUMBER
C CONCENTRATE (PAN/HM)	5	2 -150	5	PULVERIZING	5

NOTES: - indicates SEE REMARKS

REMARKS:  
 = THIS IS THE OPT AVERAGE FROM 3 ASSAYS OF THE SAMPLE.  
 AU MG IS THE TOTAL WT OF AU IN THE SAMPLE.

REPORT COPIES TO: MYRL CURRIE

INVOICE TO: MYRL CURRIE



DATE PRINTED: 24-OCT-90

PROJECT: NONE GIVEN

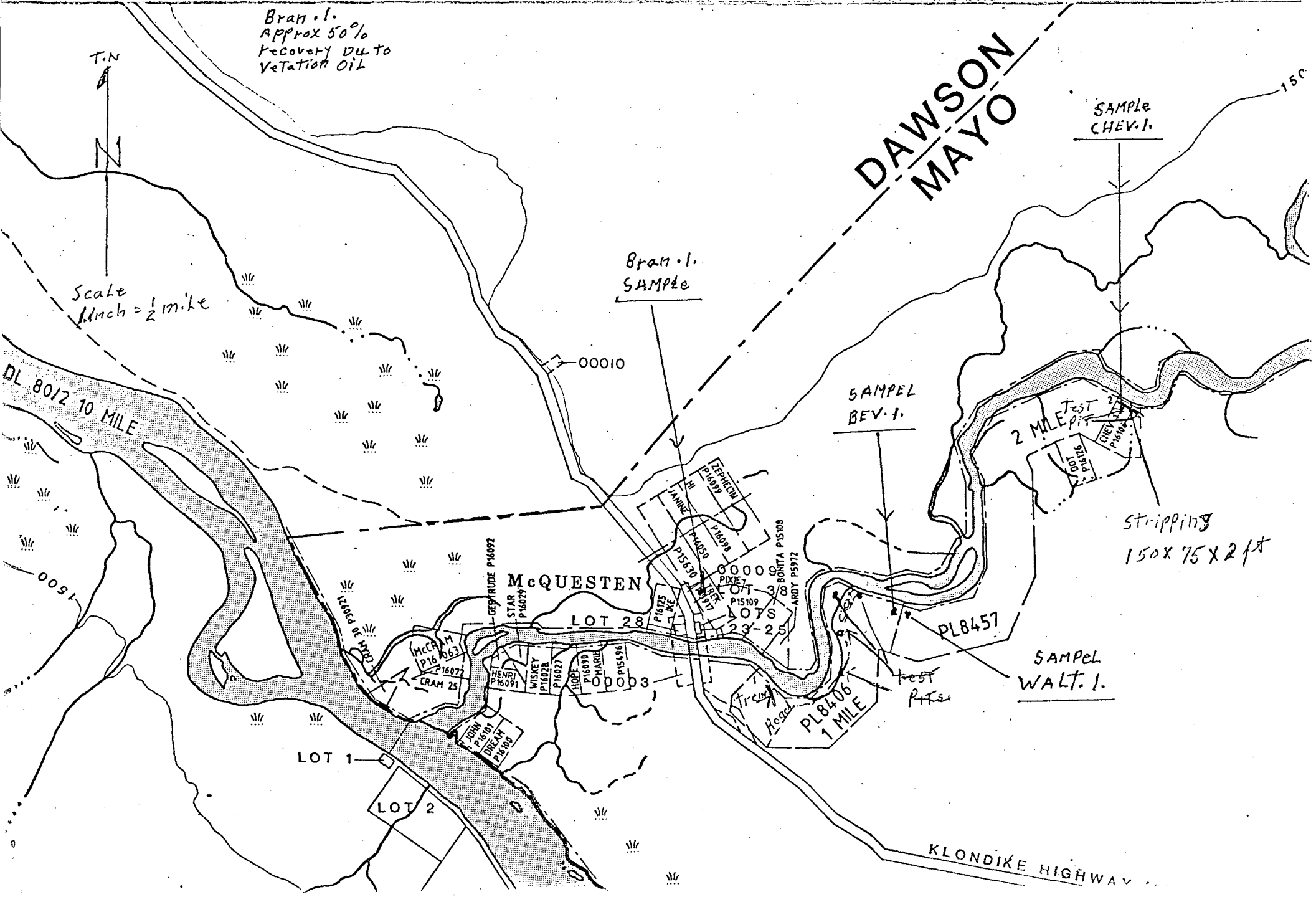
PAGE 1

REPORT: V90-36269.4

SAMPLE NUMBER	ELEMENT UNITS	Au OPT	Au Mg NG	Weight GM	<i>Au oz/yd.</i>	<i>yds/100000.</i>
C2 BEV1		81.750	48.850	17.4	<i>.00157</i>	<i>637</i>
C2 BRAN1		38.420	15.550	11.9	<i>.00050</i>	<i>2000</i>
C2 CHEV1		133.650	136.630	29.8	<i>.00439</i>	<i>228.</i>
C2 WALT1		7.542	8.300	32.1	<i>.00027</i>	<i>3747</i>
C2 VAN B		85.333=				

ASSAY  
1. YARD Samples Bran. 1. Bev. 1. WALT. 1 CHEV. 1.

SEPT / 90



48.850 mg/yd.  
.48850 gm/yd.

~~48~~

.048850

.00157 oz./yd.  $\Rightarrow$

$3.215 \times 10^{-5}$

ounce 31.10348

$$\frac{.00157}{1} = \frac{1}{x}$$

$$x = \frac{1}{.00157}$$

14.9.

636. yds/ounce



**ACTLABS**

**ACTIVATION  
LABORATORIES LTD**

Invoice No.: 1913  
Work Order: 1877  
Invoice Date: 30-JUL-90  
Date Submitted: 09-JUL-90  
Your Reference: NONE  
Account Number: P015

PLACER-DOME EXPLORATION LTD.  
103 PLATINUM ROAD  
WHITEHORSE, YUKON  
Y1A 5M3

ATTN: GLENN SHEVCHENKO

**CERTIFICATE OF ANALYSIS**

REPORT 1913A

INAA package, elements and detection limits:

AU	5.	PPB	AS	2.	PPM	BR	1.	PPM	CO	1.	PPM
CR	1.	PPM	CS	0.5	PPM	HF	0.5	PPM	HG	1.	PPM
IR	5.	PPB	MO	5.	PPM	RB	10.	PPM	SB	0.2	PPM
SC	0.1	PPM	SE	3.	PPM	TA	1.	PPM	TH	0.5	PPM
U	0.5	PPM	W	3.	PPM	LA	0.5	PPM	CE	3.	PPM
ND	5.	PPM	SM	0.1	PPM	EU	0.2	PPM	TB	0.5	PPM
YB	0.2	PPM	LU	0.01	PPM						

REPORT 1913B

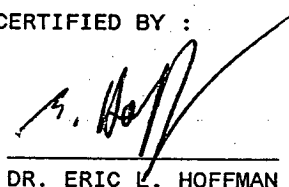
MAJOR OXIDES + TRACES BY FUSION ICAP

REPORT 1913C

AU, PT, PD by lead fire assay ICAP on 29.66 grams.

NOTE: THE GOLD VALUE BY FIRE ASSAY IS ON A MORE REPRESENTATIVE SAMPLE SIZE.

CERTIFIED BY :



DR. ERIC L. HOFFMAN



74

Sample description	SM PPM	EU PPM	TB PPM	YB PPM	LV PPM	Mass g
--------------------	-----------	-----------	-----------	-----------	-----------	-----------

A 11851	240	49.4	29	42.6	INT	0.4851
---------	-----	------	----	------	-----	--------

NO. 1111  
RECEIVED  
11/13/63

SAMPLE #	SiO2	Al2O3	Fe2O3	CaO	MgO	Na2O	K2O	TiO2	MnO	P2O5	LOI	TOTAL
	%	%	%	%	%	%	%	%	%	%	%	%
A 11851	9.8	2.2	43.2	1.4	0.5	0.5	<0.4	20.0	1.0	0.4	<0.2	79.2

SAMPLE #	Be	Cu	Ni	Pb	V	Zn	Mo	Ag	Nb	Bi
	PPM	PPM	PPM	PPM	PPM	PPM	PPM	PPM	PPM	PPM
A 11851	260	500	<200	1000	550	500	<200	2300	<50	<100

SAMPLE #	Ba	Sr	Zr	Y
	PPM	PPM	PPM	PPM
A 11851	500	< 200	42000	550

SAMPLE # :	AU	PT	PD
:	g	PPB	PPB

A 11851	3.742	67	67
---------	-------	----	----

M  
F  
A  
N

OR

P



PLACER DOME  
EXPLORATION LIMITED  
A Wholly owned Subsidiary of Placer Dome Inc.

103 PLATINUM ROAD  
WHITEHORSE, YUKON  
Y1A 5M3  
(403) 668-6838  
FAX (403) 668-2740

October 17, 1990

Mr. Myrl Currie  
c/o Don Branigan  
Box 4653,  
Whitehorse, Yukon

Dear Mr. Currie:


**RE: Lab Results on Placer Concentrate - McQueston Creek**

Attached are the lab assay results for the placer concentrate which you submitted to us for analysis. It would appear that due to the high values of tin and tungsten you are dealing with a skarn-type setting for the gold mineralization.

At your earliest convenience it would be appreciated if you could submit to us a location map for the sample.

Sincerely,

**PLACER DOME EXPLORATION LIMITED**

  
Glenn Shevchenko  
Geologist

GGS/ggs  
90.10.17



REPORT: V90-36269.4 ( PARTIAL )

REFERENCE INFO:

CLIENT: MYRL CURRIE  
PROJECT: NONE GIVEN

SUBMITTED BY: M. CURRIE  
DATE PRINTED: 5-OCT-90

ORDER	ELEMENT	NUMBER OF ANALYSES	LOWER DETECTION LIMIT	EXTRACTION	METHOD
1	Au Gold	5	0.002 OPT		Fire Assay

RESULTS TO FOLLOW FOR: Ir Os Pd Pt Rh Ru Pd Pt Rh

SAMPLE TYPES	NUMBER	SIZE FRACTIONS	NUMBER	SAMPLE PREPARATIONS	NUMBER
C CONCENTRATE (PAN/HM)	5	2 -150	5	PULVERIZING	5

REMARKS: PRELIMINARY RESULTS ONLY  
FINAL TO FOLLOW

REPORT COPIES TO: MYRL CURRIE

INVOICE TO: MYRL CURRIE





REPORT: V90-36269.4

DATE PRINTED: 5-OCT-90

PROJECT: NONE GIVEN

PAGE 1

SAMPLE NUMBER	ELEMENT UNITS	AU OPT
C2 BEV1		80.014
C2 BRAN1		38.592
C2 CHEV1		118.388
C2 WALT1		7.716
C2 VAN B		86.800





July 26 to Aug 31

90-080

July 26/90

Weather: Cloudy, rainy

Got 780 Backhoe from Whitehorse, flat tire first thing.

July 27/90

Weather: Cloudy, <sup>intervals</sup> sunny  
Went in to Chev claims, started stripping. Hydraulic hose broke, went to Steward King for fittings.

July 28/90

Weather: Cloudy  
Put trench in 18x4x5 yards = 360 cubic yards.  
Put 1/2 yard through sluice box.

July 29/90

Weather: Sunny, cloudy  
Put test hole down 4x3x3 yards.  
Put 1/2 yard through sluice box, good colour.

July 30/90

Weather: Rain all day.  
Rain all day in camp, check out samples.  
Getting approx. 50% recovery.

July 31/90

Weather: Cloudy all day.  
Put in another test hole 3x4x6 yards.  
Put gravel through sluice box, approx. 1 yard.

Aug. 1/90

Weather: Sunny  
Karen arrived at camp, brought some groceries up. Put gravel through sluice box.

Aug. 2/90

Weather: Sunny  
Worked on road to Chev claims with backhoe, had mud hole. Hydraulic line given trouble.

Aug. 3/90 Weather: Sunny  
Walked backhoe to camp to fix hydraulic line. Went to Whitehorse.

Aug. 4/90 Weather: Sunny + showers  
Came back to McQuesten River. Walter Smith + Walter Jack came up, they stayed in the cabin.

Aug. 5/90 Weather: Sunny + cloudy  
Checked Walter Smith's line on lease and recut, was very poor on property. Darin worked on backhoe hydraulic line.

Aug. 6/90 Weather: Sunny + showers  
Started trench on Walter Smith lease next to #1 post. Walter Smith and Walter Jack set up sluice box on claim, put about 1/2 yard through sluice.

Aug. 7/90 Weather: Rain all nite + part of day.  
Finished trench on Walter's claim. Moved to test hole. Broke hydraulic line on swing arm.

Aug. 8/90 Weather: cloudy + <sup>rain</sup> showers  
Worked on backhoe, hydraulic line. Brought backhoe in to Danny's garage to fix bucket. Walter put through, approx. 1/2 yard of gravel through sluice box.

Aug. 9/90 Weather: cloudy + <sup>rain</sup> showers.  
Darin welded bucket on backhoe in between rain showers. Walter Smith packed up sluice box. A few bolts needed tighten on backhoe.

Aug. 10/190 Weather: cloudy + <sup>a little</sup> rain  
Took backhoe back out to Walter's claim, put  
test hole down about 500' from river, passed  
out a couple of pans, good colours. Walter  
Smith left for Whitehorse. Y.T.

Aug. 11/190 Weather: Sunny + hot  
Took backhoe on 1 mile lease, started trench  
near #2 post. Hydraulic line broke again.

Aug. 12/190 Weather: Sunny + hot  
Got hydraulic fixed, set up sluice box at trench,  
put through  $\frac{1}{2}$  yard, good colours.

Aug. 13/190 Weather: Sunny + hot  
Finished trench and brought backhoe down to  
#1 post by bridge. Put  $\frac{1}{2}$  yard through sluice  
box, a lot of black sand, good colours.

Aug. 14/190 Weather: Sunny + hot  
Started trench, next to #1 post. Broke hydraulic  
fitting, took it over to Danny's garage, got it  
welded. Set up sluice box.

Aug. 15/190 Weather: Sunny + in evening <sup>showers</sup>  
Finished trench and brought backhoe in to camp.  
Put through ~~1/2~~ <sup>1/2</sup> yard in sluice box.

Aug. 16/190 Weather: Sunny  
Put about 2 yards through sluice box, good  
colour. Raymond stopped in, said I would get  
a good deal on a sluice machine, Fortepk #5  
machine, not till late fall.

Aug. 17/90

Took loader to Fartymill, cut off on Mayo Road. Took 3 wheeler and equipment in to McQuesten River at Fartymill. Branigan's 4x4 came in with driver.

Aug. 18/90

Darin walked backhoe in to mile 8 on Fartymill Road. Fixed on calvert.

Aug. 19/90

Fixed second calvert and walked in to McQuesten River, fixed road when necessary.

Aug. 20/90

Took equipment across river with backhoe, took canoe in to river for crossing, took 4x4 across river with supplies.

Aug. 21/90

Cleared area around trapper's cabin and marked on road to river, got all equipment in plus fuel. Branigan's 4x4 left to Whitehorse for parts.

Aug. 22/90

Built road to creek wash out. Crossed creek at 4 p.m., went 1 mile up road. Road in good shape.

Aug. 23/90

Put #1 hole down, approx. 4800 ft. up creek. Hand sluice, approx. 1/2 yard, good colour.

Aug. 24/90 Weather: Sunny  
Put test hole 1/4 mile up creek, 2 test holes  
100 ft. apart, panned and good colour.

Aug. 25/90 Weather: Sunny  
Finished 2 holes. Broke steering fitting.  
Went to Steward King for part, got part.

Aug. 26/90 Weather: Rain  
Walked old road to airport, all grown in.  
Finished #3 hole.

Aug. 27/90 Weather: Showers.  
Dug a trench 8x60x18 ft. at post #1 of claim  
#YB02738. Put 1 yard through sluice box,  
small specks of gold.

Aug. 28/90 Weather: cloudy + intervals <sup>sunny</sup>  
Extended trench #4 to 110x9x18 ft. Went to  
May Creek put hole down with explosives,  
panned about ten pans, got very few  
specks.

Aug. 29/90 Weather: Sunny  
Hole #5 about 6000 ft. up stream, 15x9x18 ft.  
hole. Sluice 1 yard, small specks of gold.  
Branigan's 4x4 came in with driver and  
brought wrong parts.

Aug. 30/90 Weather: cloudy + <sup>rain</sup> showers.  
No cat to come in. moved camp out of  
Forty mile, walked 780 out to Mayo Head.  
McQueen River came up 7 inches. Camp now  
at McQueen Bridge for further work, with  
gold machine.

Aug. 31/90 Weather: Frost & Sunny.  
Went to Moys for recording. Back into Forty mile  
for rest of year, river up about another 12 inches.  
Back to McQuesten River Bridge.

Branigan got gold machine, not likely get in  
to Forty mile with it till next year.

Set up gold machine at McQuesten area to see,  
how it performs. Spend a day on each  
property for proper sampling around Sept. 15 on,  
depending on weather. Assay results on  
properties will be turned in when received  
about Nov. 1/90. Will pick-up one man for helper  
on shovel. (Hand shovelling into gold machine.)

Will turn in statement on gold machine  
with assays; approx. Nov. 1/90

Sept. 1/90

Myrl. V. Currie

Weather: Rain all mite.



Picture at forty mile creek, trapper's cabin,  
with tree on top.



Forty mile (trench)  
With sand vein  $85^{\circ}$  vertical, 5 ft. width, approx.  
17 ft. depth, bottom of trench. Hard packed  
glacier gravel.





*McQuesten River area, sluice box for testing.*



*Modern equipment - Nortech #10, Gold machine.*

*"THE GOLD MACHINE"*

■ The Nortech 10 Model





**NOTICE**

This map is issued as a preliminary guide for which the Department of Indian Affairs and Northern Development will accept no responsibility for any errors, inaccuracies or omissions whatsoever.

# SHEET 115-P-10

LATITUDE 63° 30' To 63° 45'  
LONGITUDE 136° 30' To 137° 00'

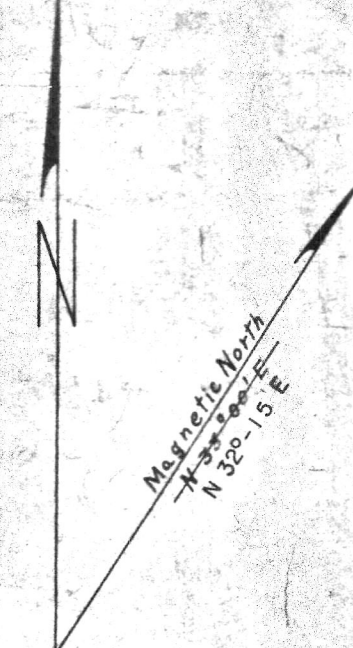
## MOOSE CREEK

CANADA  
DEPARTMENT OF NORTHERN AFFAIRS AND NATIONAL RESOURCES  
NORTHERN ADMINISTRATION BRANCH  
RESOURCES DIVISION

SCALE: 1/2 MILE TO 1 INCH

FT. 1500 0 1000 2000 3000 4000 5000 6000 7000 8000 10000

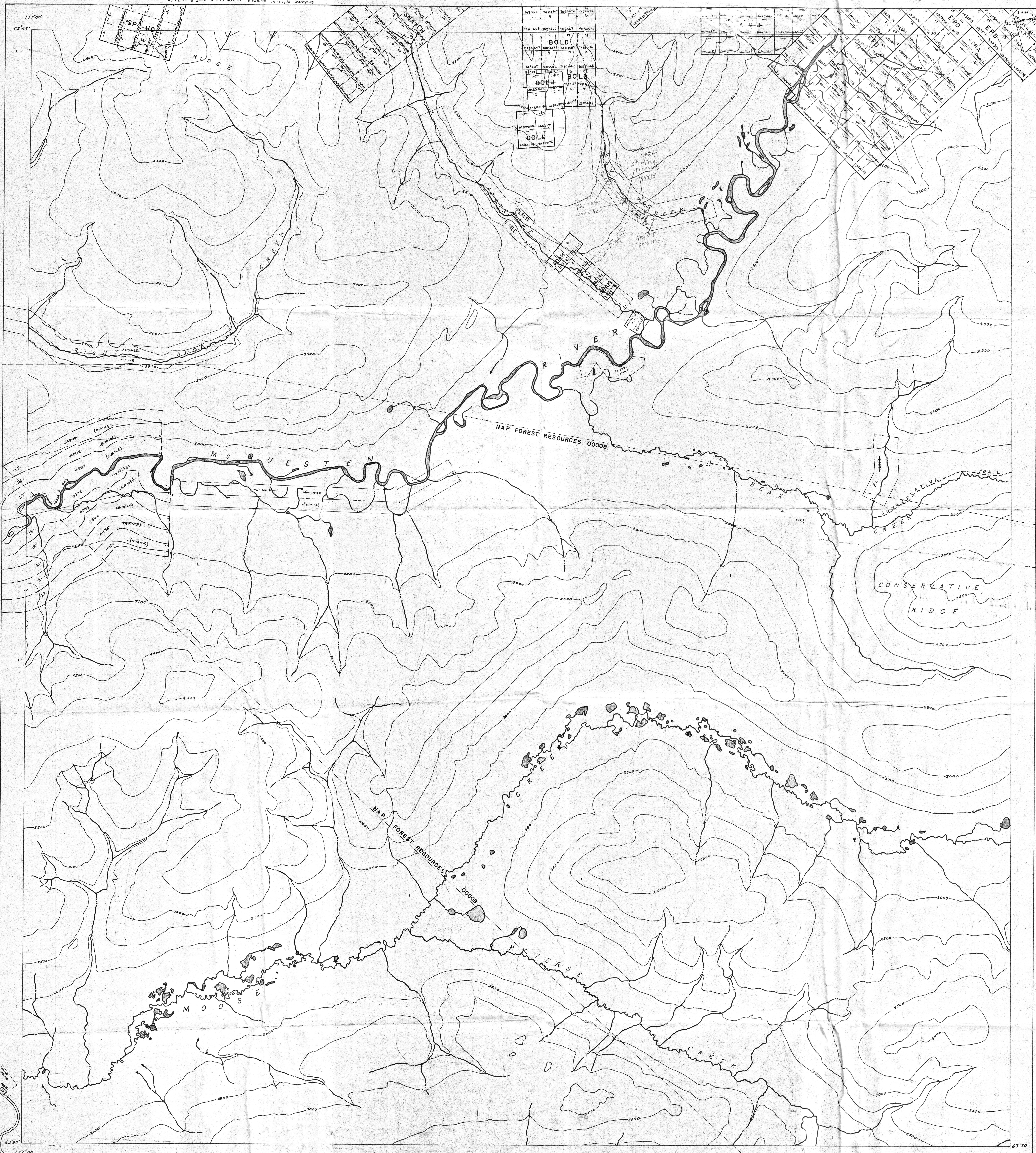
ISSUED UNDER THE AUTHORITY OF THE MINISTER  
NORTHERN AFFAIRS AND NATIONAL RESOURCES



115-P-14	115-P-15	115-P-16
115-P-11	115-P-10	115-P-9
115-P-6	115-P-7	115-P-8

2 OCT 65  
16 APR 65  
15 NOV 65  
14 FEB 65  
13 JUN 65  
12 OCT 65  
11 APR 65  
10 AUG 65  
9 DEC 65  
8 JUN 65  
7 OCT 65  
6 APR 65  
5 AUG 65  
4 DEC 65  
3 JUN 65  
2 OCT 65  
1 APR 65  
30 SEP 65  
29 MAR 65  
28 JUL 65  
27 NOV 65  
26 MAY 65  
25 SEP 65  
24 MAR 65  
23 JUL 65  
22 NOV 65  
21 MAY 65  
20 SEP 65  
19 MAR 65  
18 JUL 65  
17 NOV 65  
16 MAY 65  
15 SEP 65  
14 MAR 65  
13 JUL 65  
12 NOV 65  
11 MAY 65  
10 SEP 65  
9 MAR 65  
8 JUL 65  
7 NOV 65  
6 MAY 65  
5 SEP 65  
4 MAR 65  
3 JUL 65  
2 NOV 65  
1 MAY 65  
30 SEP 65  
29 MAR 65  
28 JUL 65  
27 NOV 65  
26 MAY 65  
25 SEP 65  
24 MAR 65  
23 JUL 65  
22 NOV 65  
21 MAY 65  
20 SEP 65  
19 MAR 65  
18 JUL 65  
17 NOV 65  
16 MAY 65  
15 SEP 65  
14 MAR 65  
13 JUL 65  
12 NOV 65  
11 MAY 65  
10 SEP 65  
9 MAR 65  
8 JUL 65  
7 NOV 65  
6 MAY 65  
5 SEP 65  
4 MAR 65  
3 JUL 65  
2 NOV 65  
1 MAY 65

WHITEHORSE 8 Feb. 63 28 Oct. 65 JUNE 3, 1974 APRIL 23, 1971



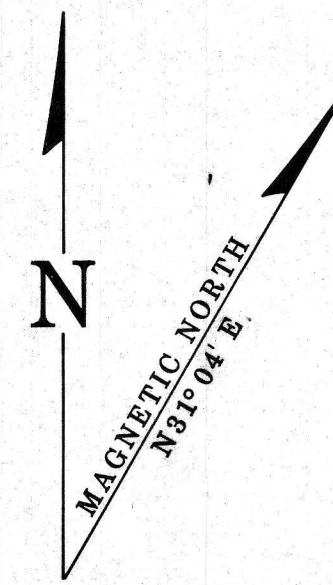
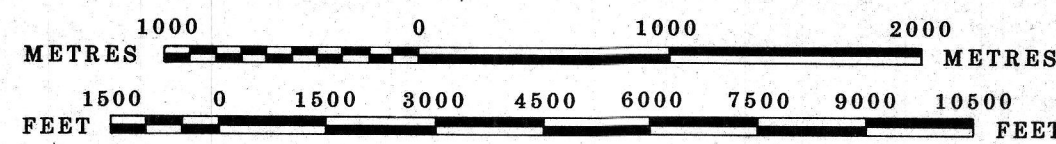


MAYO 6 APR. 1990  
 DAWSON 16 FEB. 1988

115P-11  
 QUARTZ & PLACER

LATITUDE 63°30' TO 63°45'  
 LONGITUDE 137°00' TO 137°30'  
 ISSUED UNDER THE AUTHORITY OF THE MINISTER  
 OF  
 INDIAN AFFAIRS AND NORTHERN DEVELOPMENT

SCALE 1:30,000



NOTE:

THIS MAP IS ISSUED AS A PRELIMINARY GUIDE FOR WHICH THE DEPARTMENT OF INDIAN AFFAIRS AND NORTHERN DEVELOPMENT WILL ACCEPT NO RESPONSIBILITY FOR ANY ERRORS, INACCURACIES OR OMISSIONS WHATSOEVER.

TOPOGRAPHY COMPILED FROM 1:50,000 NATIONAL TOPOGRAPHIC SERIES. CONTOUR INTERVAL 500 FEET. SURVEY INFORMATION COMPILED FROM LEGAL SURVEYS, BY DRAFTING SERVICES.

115P-13	115P-14	115P-15
115P-12	115P-11	115P-10
115P-6	115P-6	115P-7

