

Evened 2 may. Dropped camp on old
truck

9 MAY started camp, ground surveys
to Dawson for truck foot. Seen
Jack Thompson above us.

10 MAY over to #2 pup for target evaluation.
Luna is a no show for 10th appointment.

11 MAY Set 3 shafts to start test #1 500 yd
up to left of #2 pup and 150 FT
up hill. #2 in #2 pup 100 FT above
valley floor. #3 50 FT above #2 pit.
pit #4 1/2 then hit freeze. pit #5 1 FT
then hit freeze. Exposed ground and
surface fixed #2 #3 pits. Whites
located as surface gravel all 3 pits.

12 MAY sipped off holes down to 2 1/2 feet #2-3
pits. did walk over from #3 pup over
to #1 pup checked on bedrock gravel
overlay and exposed white channel
on #1 pup for Luna. run N-5 May

13 MAY ran test #1 and #3 pits at 2 FT
level pit #1 6 visables and 4 finer
colours, pit #3 2 colours fine

suspect greater depth needed for
decent results. However indication
on surface pans are encouraging.

May 14 Dave on for snow or went
up to whites to reclear holes of
water + melt pan 2 colors finer per

May 15 To whites, hole #1-2' hole #2-3'
hole #3-6' RAN PANS OUT OF ICE
3 holes hole #1 6 CPP hole #2 2 CPP.
2 samples
taken
FROM
#3 #1
hole #2 2-3 colors per pan. 15 yd sample
from hand sluice yielded 120 colors

17
SUSPECT SEPARATED MATERIAL BETWEEN
90-110 yds per oz. To 6' ~~level~~ level
around #3 PANNED NEXT TO #1 30-60 CPP

~~May 16~~ UP TO CLEAR HOLES APPEARS #3 HAS
2 separate freeze levels with gravel
and then a layer of sand between 2 1/2'
of frost on surface 3 1/2' gravel then sand
then frost which we are presently
trying to break through

May 16 UP TO clear holes on whites
#1 nothing done #2-4 1/2' #3 6 6" x 6 x 5
2-3 colors per on #2 #3 Fined #3

MAY 16 cleaned holes out to Dawson City
19:00 hrs For SOWER sluffing problem
in #2 #3 holes from ground waters
Checked surface values below #2
pit 1 c.p.p.

MAY 17 up to pits, cleaned fines; # to Dawson.
Fines still 2 c.p.p. in #3 #1 nothing
done #2 Rained out

MAY 18 up to pits #2 #3 cleaned #3 stuffed
and abandoned at 7 1/2' level last
reading 2 c.p.p. #2 bailed and fired
3 times 2 c.p.p. average. did panning
below #2 in lower restriction, heavy
rock (country) and mixed white channel
and overlying klondike gravels 4-6
good coarse colors per pan. Suspect
do to steepness of grade area is
shallow to rock and fines values
have for the better part been washed
down to clean creek. Values in this
area are ³⁰ ~~60~~ ⁶⁰ ~~120~~ per pan Working
difficulty could ~~occur~~ occur due
to diameter of country boulders up to 10'
across. pits #2 will probably be abandon

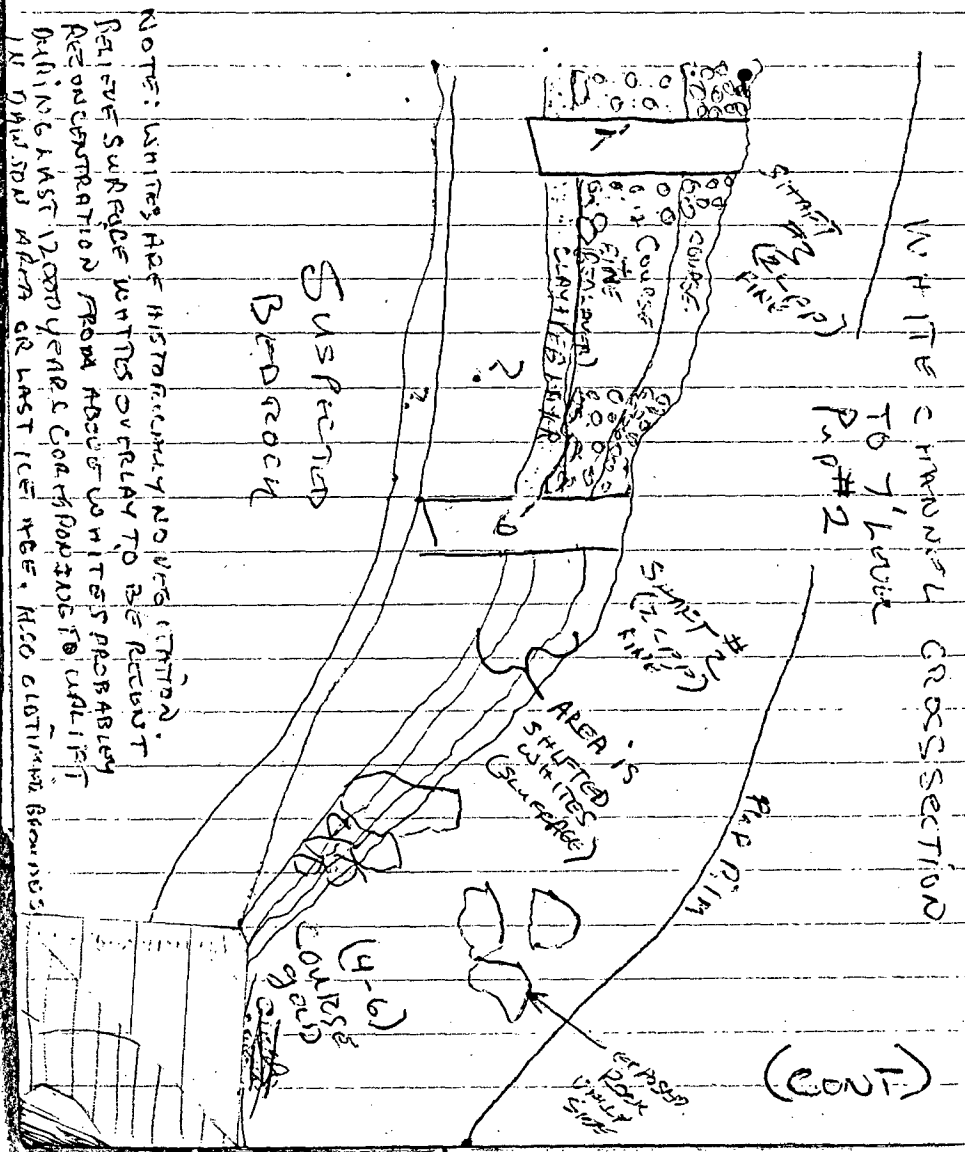
around 6'-7'. due to some stuffage
 as #3 plus ground water. However, #2
 appears to have gained 3' over #3 due
 to shallower ground determined by
 layers of redish sandy gravel at 4'
 on #2 being at or near 7' mark on #3.
 hopefully we can obtain a sample near rock
 in this area. pans indicate traces of
 orpiment hematite quartz cristol and
 what appears to be calcite plus apparent
 sulfide deposits on some of the smaller
 particles (also what appears to be a 1" layer of vegetation?)

122

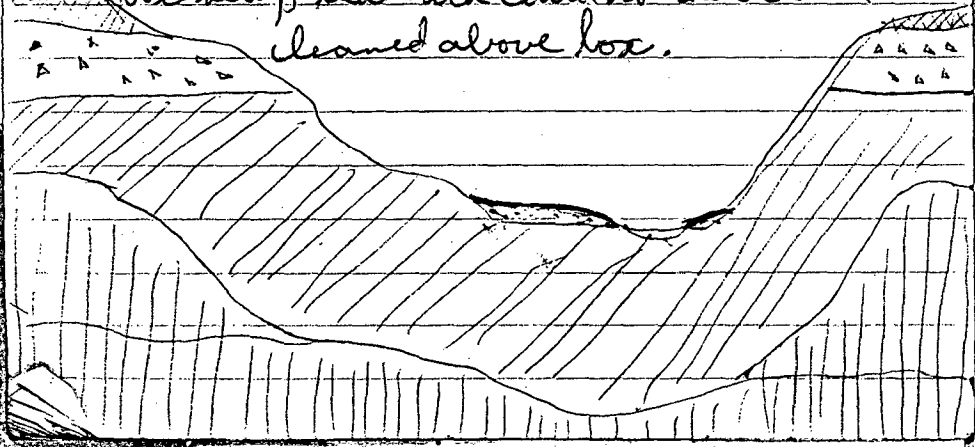
May 19 placed metal flower tags on Bobt-15
 inclusive up to whites to restake discovery
 in Dods name Posts Read as follows

Post #1 JIM	Post #2
Flower Discovery Chain	"
100 FT upstream to Post #2	1500 FT ^{DOWN} stream to #1
125 Flowers	"
9 1991	"
	"
	"
	"

MAY 20 Day OFF, Camp of garbage
do dishes, get water etc.



MAY 20 (CONT) TEST SITE #1 IS A NARROW RESTRICTION
IN A GROUND SLICE AREA WHERE ELEMENTS OF
AN OLD WOODEN BOX WAS LOCATED JUST 20' UP CUT,
HENCE THE HIGH RECOVERY IN THIS AREA 30-60 cpm.
IT WAS APPARENTLY WORKED WITH RUNOFF WATER
SUPPLEMENTED BY A 2 MILE LONG DRAIN ABOUT 1400'
FROM PUP #2. TO PUP #3. THEY GROUND SLICED
MATERIAL DOWN THE HILL CUTTING THROUGH THE
WHITE CHANNEL. ARCHIVES IN DAWSON HAVE
DRAWN A BLANK WITH REGARDS TO RECOVERY
OR INFO ON THIS WORK. HOWEVER, DUE TO
THE LARGE AMOUNT OF PREP WORK UNDERTAKEN
ONE MUST ASSUME THEY WORKED PAY TO
THE LIMIT OF THEIR WATER RESOURCES. COLORS
TAKEN ABOVE SLICE HAS YIELDED 2-4 fine
color per pan ABOVE ROCK. IT IS BELIEVED DUE TO
BOX SETUP THAT ROCK COULD NOT HAVE BEEN
CLEANED ABOVE BOX.



MAY 21 Set test sluice below #2 pit & ran
3/4 yd 30-40 app. coarse. Reset below #1 pit
ran 3/4 yd have over Apr? out at 10:00 AM
back at 10 pm. hit bedrock consisting of
heavy ~~granular quartz~~ ^{GRANULAR QUARTZ} ~~shist~~ ^{SHIST} Feldspar. (large crystals)
hematite Bill no show

MAY 22 Dawson For Shower, laundry, Show.
Gold show on 24 May

MAY 23 up to cut ran 2 1/2 yd threw test sluice
should have sample ready to take
Mon or Tues. Total yd (3).

May 24 up to cut out to highway to check
on Bill. Back screwed up. Bill in
up to check on cut

May 25 I have fle. out for duration Job office

May 26 Still have fle. John fishes here to
deal on ground. Rained early in
day. Hewlett back to Whitehouse for typing

May 27 Mr Kohlman here to deal on ground.
I gave him tour of ground. He
wants to come in so he will go to
lower ground with his hoe to
run test of recovery system to below

up front charges

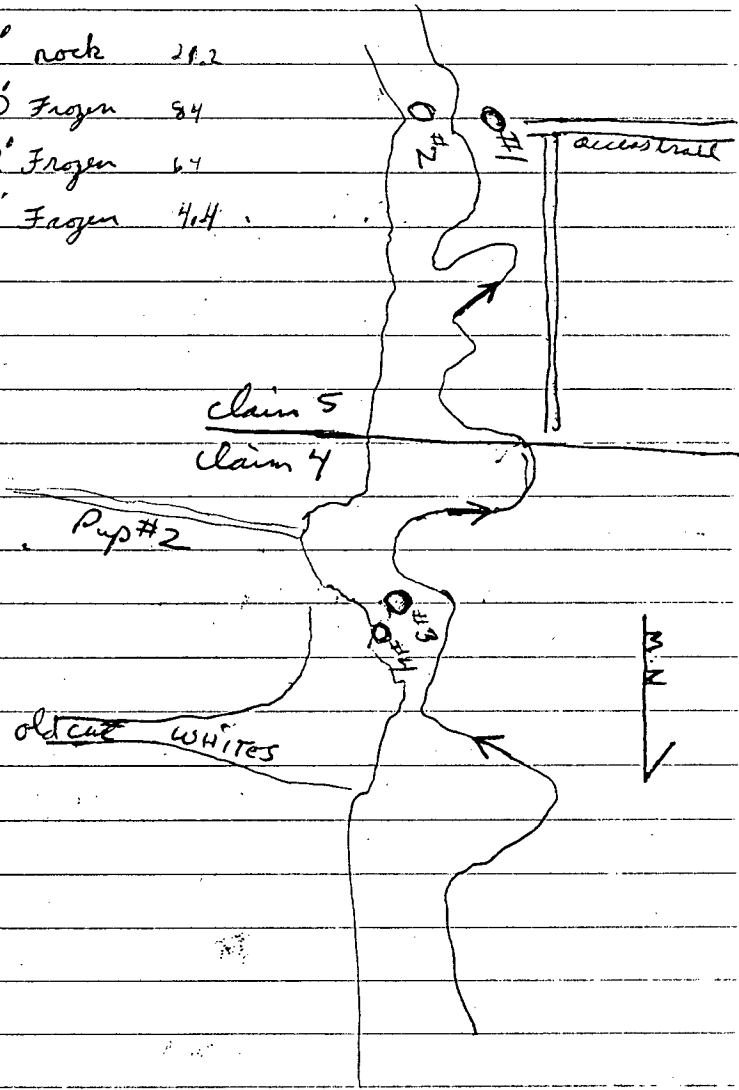
May 28 Went to Dawson to see mining records and ~~recheck~~ discovery on Whites. Also, I had to check expiry dates on Bob #1-15 and stake discovery claim on gulch on white channel gravels. Also checking out dates of expiry on 5 mile lease below Bob 1-15 and current leases of 1 and 2 miles downstream. repaired H.W. system in M.H. and fetched camp water from Willow Creek - 7 KM north on highway. Expiry date of 5 Mile lease is June 12/91

May 29 Went down to white channel up to test site #2 #3, changed to Jim (Name of claim) on discovery post. First of test equipment arrived today. Mr Fishers Tracked excavator and trommel hopper.

May 30 Stake 3 claims down below bridge. John Fisher dug 4 holes. Hole #1 end of road 16'x6'x6'. Hole #2 across creek from Hole #1 12'x10'x20'. Hole #3 at Bob 3 west to whites 12'x12'x12'. Hole #4 4'x8'x4'. Values between 2 and 4 fine colors per pan only obtained at hole #1. All others still in lower 1 mile lease cleared 150'x180'

test sites MAY 30

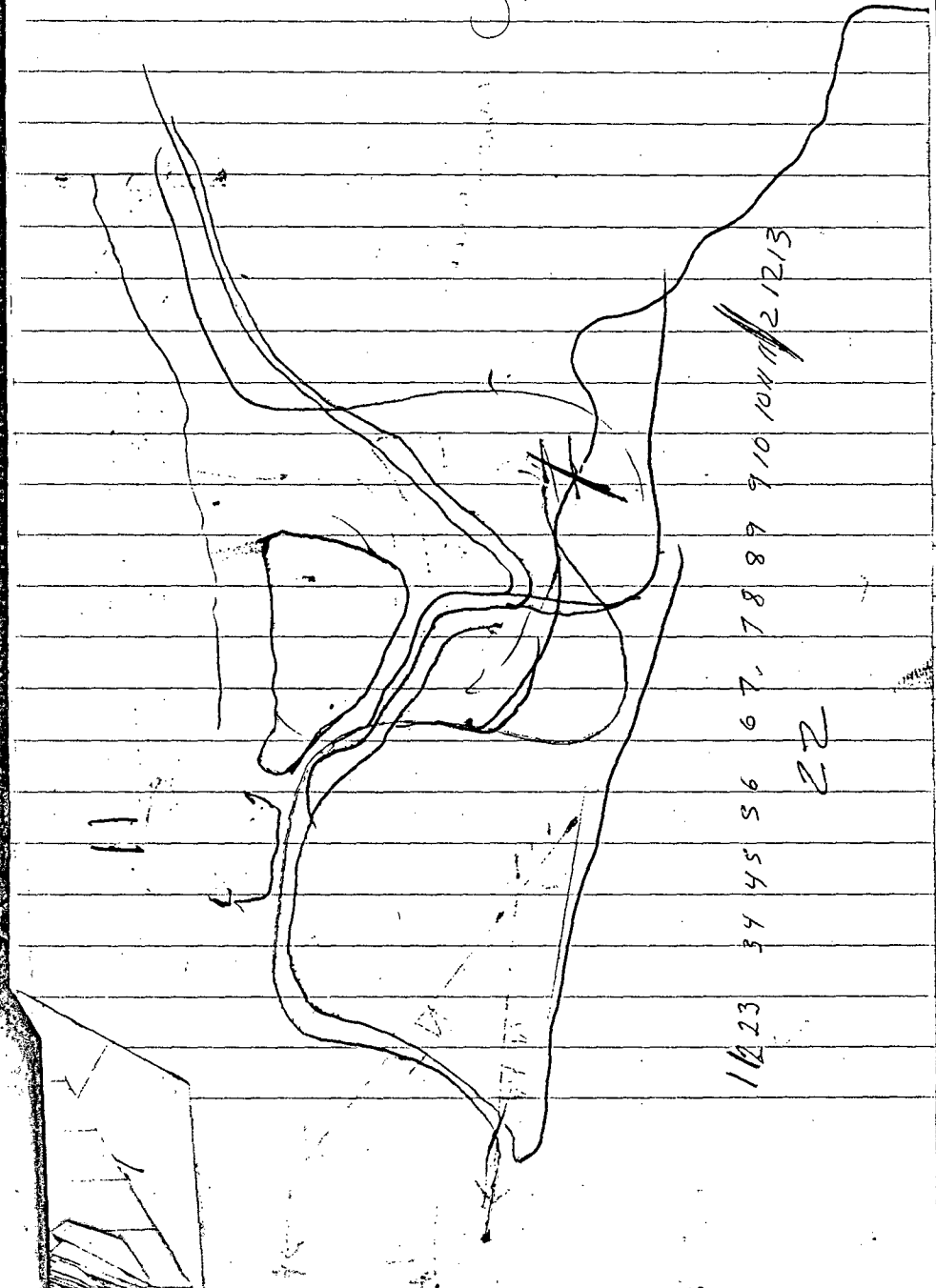
- #1 6'x6'x16' rock 29.2
- #2 12'x10'x20' Frozen 94
- #3 12'x12'x12' Frozen 67
- #4 4'x8'x4' Frozen 4.4



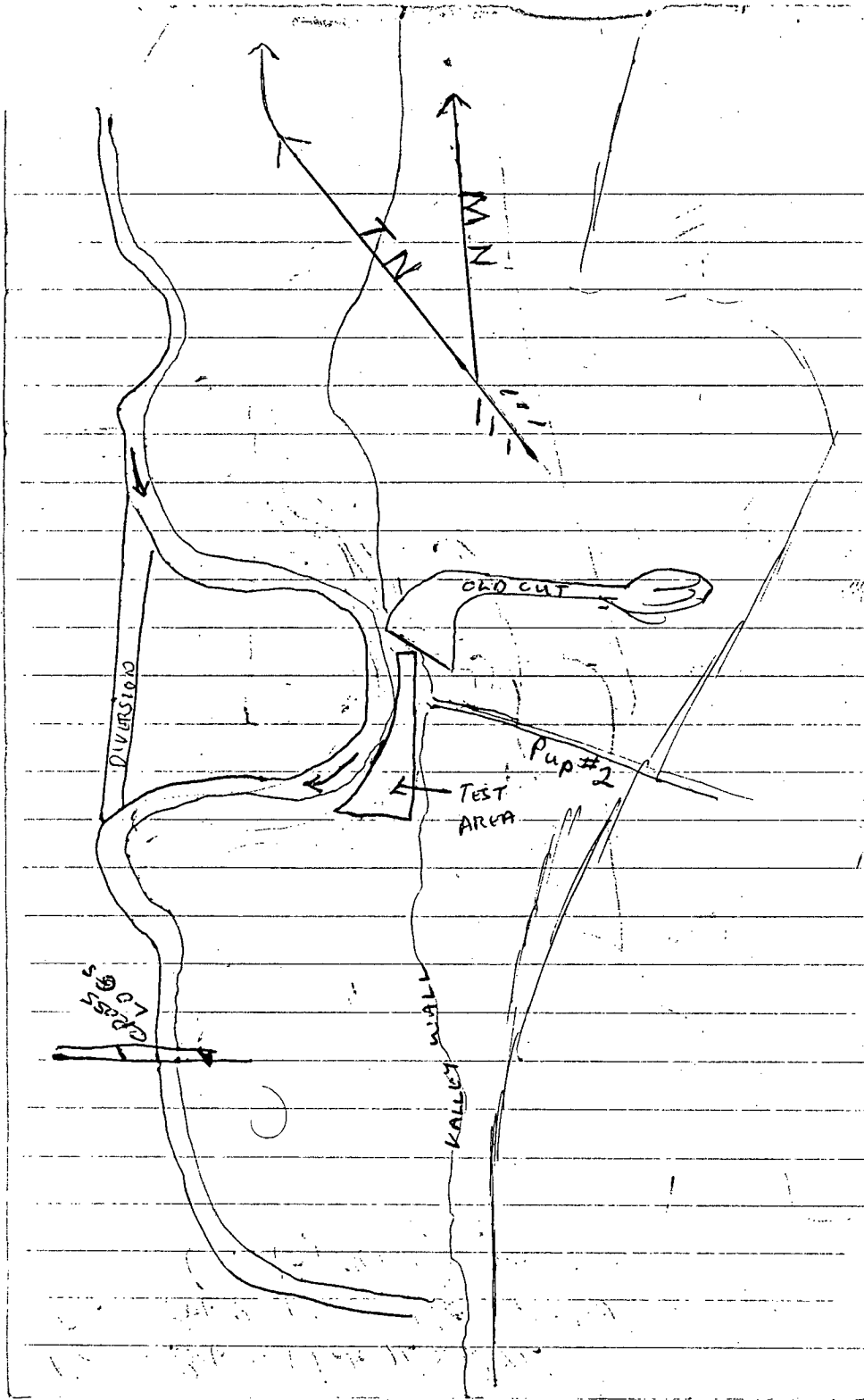
Claim Bob 4-1 hole 16' x 6' x 6'

Claim Bob 3-1 Hole 4' x 8' x 4' - 1-12 x 12 x 12

(May 30/91) John Fischer-



11223 34 45 56 67 78 89 910 1011 1213
22



MAY 31 More camp water Cleaned Camp.
Jim no snow with D6.

June 1 Mr Fisher is continuing with test
pit with his 1yd Cabelco. test pit,
dimensions and values are as follows.

June 2: To Whitehouse,

June 3: Supplies Fuel, Propane. filled out
interim pay agreement, to be sent to
Dawson City.

June 4 Back in Clear Creek. 3yd Inshy is
still not operating on lower ground.
counterweight expected Wed June 5
from Vancouver. Had visit by George
and Neil, mechanic for info on first
gulch and geologicals of area. Jim's
D6 CAT to arrive within next 2 DAYS

June 5 Stop up #2 gulch panned 6 went
over to #3 gulch whites located
75 ft mark 2 c.p.p. opening to clear
creek 6 c.p.p. walked 4 1/2 miles down old
Barlow Road and back looking
at feeders on opposite side of creek
Finn's cat expected tomorrow. Mr.
Fisher wants backhaul for his
excavator to Whitehorse when Finn
O-B ARRIVES. W.L.

June 6 To Dawson for shower, mail, apple
groceries Saw Dick DAEN in Dawson
to CONSULT ON WHITE CHANNEL

June 7 Up creek to see DAVID, ZOGUS, F.J. and
Steve Vanbilber, RAY LAZOT. RAINED

June 8 RAINED C.T. + MARCUS SIMES FOR MILE

June 9 RAINED Finn Hughes dropped load of gear

June 10 Dawson City Mining Recorder

Picky, Mail & Groceries

June 11 O-B on ground

IN CONTACT WITH GR LAST ICE MBE. ALSO OBTAINING BEARINGS
 12.17

June 12 Went up left limit from Clear
 Creek Bridge. Encountered mixed
 white channel gravel mixed with
 recent blondish gravels cut by
 glacial till on both sides. Gravels
 appear to be unsorted except for fine
 gravels $\frac{1}{2}$ " in diameter. Bedrock
 is a type of ^{fine granular} quartz. Several
 dry pups and a couple of running
 pups cross the limit to the Clear
 Creek floor. Values as yet undeterm-
 ined. Staked 5 mile lease up claims
 from end of our two mile lease to
 Bob #15 Posts read as follows

Post #1	Post #2
5 mile Pleas lease	SAME ONLY
5 mile upstream to	Downstream
Post #2	and
June 13/91	Post #1

1201 AM
 Roy Bill Pleas
 William A. Jones
 Claims against Wendy Burns 1 mile Post #2
 1 MILE DOWNSTREAM AND 3 CLAIMS

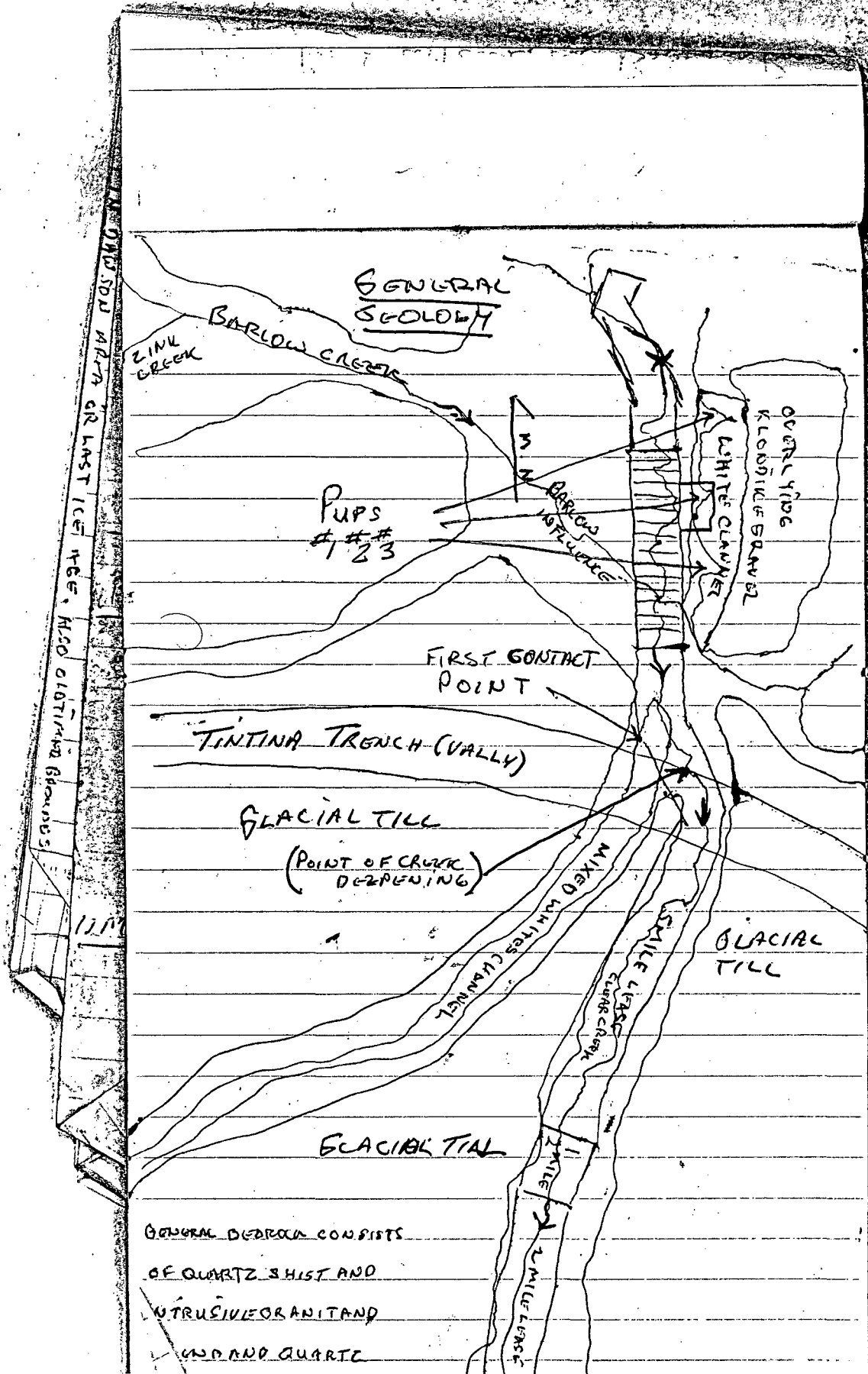
THEY DON'T WANT OR LASTICE NEE. ALSO OBTAINING GROUNDS

from Barlow town on Barlow Road.
Total Foot mileage today 18 1/2 miles

June 13 Dawson Mining Recorder to Register 3 bottom claims, laundry, Shower. Back by 17:00 hrs.

June 14 Worked on Recovery System for test plant and Posts for bottom lease breakdown.

JUNE 15 HAVE 3 MILES OF LEASE BREAK CLAIM POSTS READY TO INSTALL. TESTED JIMS 3" PUMP AND SERVICED CAT. LOOKED AT MODIFICATIONS TO IMPROVE RECOVERY ON BOX. JIM COULD BE TESTING IN ABOUT 7 DAYS. SURFACE WHITES APPEAR TO HAVE BEEN SHIFTED DOWN HILL SLIGHTLY. EXPECT GOOD RESULTS ON COMPACTED WHITE CHANNEL MAIN CHANNEL WHEN WE DO TESTS WITH D-6 BOX SYSTEM TO INVOLVE DUMP WITH PUNCH PLATE OVER NOMAD AND EXPANDED #16. PUNCH TO BE ALSO SUSPENDED OVER BOX AND 1/2" CLASSIFIER. IF ADDED STEEPNESS NEEDED WE WILL REMOVE EXPANDED, USE MAIN BOX AS CLASSIFIER ONLY, AND CHANNEL OFF WATER AND HALF INCH (GO OVER 2 PAGES)



JUNE 15

MATERIAL IN ANOTHER FINE TUNED BOX. DUE TO COMPACTNESS OF WHITE CHANNEL AND LIMITED WATER IT MAY BE NECESSARY TO RECIRCULATE WATER AND DIVERT WATER FROM PUD #2 THROUGH A 6" PIPE ON GRAVITY FEED. INITIAL TEST SITE TO BE SET UP ON OLD TIMER CUT ABOUT $\frac{1}{2}$ WAY UP THIRD TAILINGS, AND CLEAN $\frac{1}{2}$ OFF TOP OF TAILINGS AND THEN CLEAN CUT TO ROCK, REMOVE SLUFFED WHITE CHANNEL AND SLUICE IT, THEN CHECK OLD CHANNEL IN WHITES FOR PAY BY SLUICING ABOUT 250YD FROM EACH SIDE. IT APPEARS THE WHITE CHANNEL creek bed is hung up ON THE VALLEY WALL and drops in altitude in a NORTH TO SOUTH direction. HENCE, THE IDEAL PLACE TO START MINING ~~WOULD~~ BE AT THE LOWER END AND WORK UP CHANNEL. PERHAPS THE LOWEST IDEAL starting spot would be PUD #2 due to better water. AN ACCURATE ASSESSMENT CAN BE MADE OF THE VALUES ONCE THE COMPACT MATERIAL IS PROCESSED IN THE CUT MADE BY THE OLDTIMER. THE ROCK AND COMPACT MATERIAL IS EASILY ACCESSIBLE IN THIS AREA WITH LIMITED WORK NECESSARY.

OLD TIMER CUT
MIGHT BE
GRIST ICE
MGE
ALSO OLDTIMER
BRANDS

11/11

June 16 fetched camp water from Willow Creek
11 km away

Basic creek values have remained fairly constant and rock fairly aggraded on Clear Creek. The notable exception is the area approximately 2 mile downstream from Bob 15. In this area there is deepening of the channel due to the influence of the Tintina Valley. Depth in this area is as yet undetermined. Barlow Creek also affects the lower portion of Clear Creek. This is caused by Barlow being the older more mature drainage system with reported depths (George BERVAIS) of ^{the side of an opening of rock & clay} 83+ feet. Hence, Barlow creek could represent a canyon influence on Clear Creek lower, now apparently buried. Fluvial activity below Bob 15 was major in the Tintina younger sense, the scattered white channel on the lower left limit, the mass of glacial deposits, and the fairly

DRY SOIL
MAY 14
OR LAST
ICE
MGE
MCO
CLOTHING
BRANDS

new pay values which have not had time as yet to form a pay streak. It is this factor which makes it possible that lower clear creek could be economical to mine. Being that it is a pay area with surface deposits ^{even though rock pay not be obtained}.

The average run on Clear Creek gold is fine. Hence, the technology to recover fine gold must be incorporated. At present we have a 3 yd indy backhoe with a vertical capability of 33' diggin and testing on the lower 1/2 mile lease held by myself. The area has be stripped to speed ^{thawing} ^{red/cogred} ^{46pp} 150' x 180' x 1 yd. Surface colors are encouraging and results are to follow. Recovery device to be used in this area is a reverse spiral trommel using 200 gal per minute and processing 80 yd hr. on bulk sample. Tracked hoe is supplimented by a 950 cat loader. expected recovery is 90+ % of values in test area. Test area is 100 yds from Clear Creek Bridge on upstream side of left limit, just downstream 1 mile from our drill program completed last year.

11
12
13
14
15
16
17
18
19
20
21
22
23
24
25
26
27
28
29
30
31
32
33
34
35
36
37
38
39
40
41
42
43
44
45
46
47
48
49
50
51
52
53
54
55
56
57
58
59
60
61
62
63
64
65
66
67
68
69
70
71
72
73
74
75
76
77
78
79
80
81
82
83
84
85
86
87
88
89
90
91
92
93
94
95
96
97
98
99
100
101
102
103
104
105
106
107
108
109
110
111
112
113
114
115
116
117
118
119
120
121
122
123
124
125
126
127
128
129
130
131
132
133
134
135
136
137
138
139
140
141
142
143
144
145
146
147
148
149
150
151
152
153
154
155
156
157
158
159
160
161
162
163
164
165
166
167
168
169
170
171
172
173
174
175
176
177
178
179
180
181
182
183
184
185
186
187
188
189
190
191
192
193
194
195
196
197
198
199
200
201
202
203
204
205
206
207
208
209
210
211
212
213
214
215
216
217
218
219
220
221
222
223
224
225
226
227
228
229
230
231
232
233
234
235
236
237
238
239
240
241
242
243
244
245
246
247
248
249
250
251
252
253
254
255
256
257
258
259
260
261
262
263
264
265
266
267
268
269
270
271
272
273
274
275
276
277
278
279
280
281
282
283
284
285
286
287
288
289
290
291
292
293
294
295
296
297
298
299
300
301
302
303
304
305
306
307
308
309
310
311
312
313
314
315
316
317
318
319
320
321
322
323
324
325
326
327
328
329
330
331
332
333
334
335
336
337
338
339
340
341
342
343
344
345
346
347
348
349
350
351
352
353
354
355
356
357
358
359
360
361
362
363
364
365
366
367
368
369
370
371
372
373
374
375
376
377
378
379
380
381
382
383
384
385
386
387
388
389
390
391
392
393
394
395
396
397
398
399
400
401
402
403
404
405
406
407
408
409
410
411
412
413
414
415
416
417
418
419
420
421
422
423
424
425
426
427
428
429
430
431
432
433
434
435
436
437
438
439
440
441
442
443
444
445
446
447
448
449
450
451
452
453
454
455
456
457
458
459
460
461
462
463
464
465
466
467
468
469
470
471
472
473
474
475
476
477
478
479
480
481
482
483
484
485
486
487
488
489
490
491
492
493
494
495
496
497
498
499
500
501
502
503
504
505
506
507
508
509
510
511
512
513
514
515
516
517
518
519
520
521
522
523
524
525
526
527
528
529
530
531
532
533
534
535
536
537
538
539
540
541
542
543
544
545
546
547
548
549
550
551
552
553
554
555
556
557
558
559
560
561
562
563
564
565
566
567
568
569
570
571
572
573
574
575
576
577
578
579
580
581
582
583
584
585
586
587
588
589
590
591
592
593
594
595
596
597
598
599
600
601
602
603
604
605
606
607
608
609
610
611
612
613
614
615
616
617
618
619
620
621
622
623
624
625
626
627
628
629
630
631
632
633
634
635
636
637
638
639
640
641
642
643
644
645
646
647
648
649
650
651
652
653
654
655
656
657
658
659
660
661
662
663
664
665
666
667
668
669
670
671
672
673
674
675
676
677
678
679
680
681
682
683
684
685
686
687
688
689
690
691
692
693
694
695
696
697
698
699
700
701
702
703
704
705
706
707
708
709
710
711
712
713
714
715
716
717
718
719
720
721
722
723
724
725
726
727
728
729
730
731
732
733
734
735
736
737
738
739
740
741
742
743
744
745
746
747
748
749
750
751
752
753
754
755
756
757
758
759
760
761
762
763
764
765
766
767
768
769
770
771
772
773
774
775
776
777
778
779
780
781
782
783
784
785
786
787
788
789
790
791
792
793
794
795
796
797
798
799
800
801
802
803
804
805
806
807
808
809
810
811
812
813
814
815
816
817
818
819
820
821
822
823
824
825
826
827
828
829
830
831
832
833
834
835
836
837
838
839
840
841
842
843
844
845
846
847
848
849
850
851
852
853
854
855
856
857
858
859
860
861
862
863
864
865
866
867
868
869
870
871
872
873
874
875
876
877
878
879
880
881
882
883
884
885
886
887
888
889
890
891
892
893
894
895
896
897
898
899
900
901
902
903
904
905
906
907
908
909
910
911
912
913
914
915
916
917
918
919
920
921
922
923
924
925
926
927
928
929
930
931
932
933
934
935
936
937
938
939
940
941
942
943
944
945
946
947
948
949
950
951
952
953
954
955
956
957
958
959
960
961
962
963
964
965
966
967
968
969
970
971
972
973
974
975
976
977
978
979
980
981
982
983
984
985
986
987
988
989
990
991
992
993
994
995
996
997
998
999
1000

June 17 to Dawson for mail parts, running
Recorder.

June 18 worked on test system, almost
ready to set by tomorrow

June 19 test system on whites, cat over.
need supplies in Dawson, need 4" Vitale's
clamp and D-16 plugs plus buckets. Completed
some stripping better than hell here

June 20 test fired pump, rough set box, cut small
tailings pond for pump with D-6-74. Small
initial modifications necessary. To Dawson
for lay flat connectors, washers, and more
4" box clamps. suspect secondary modifica-
tion may be necessary. Still Hot

June 21 Still hot over 100°. might start working
nights when it's cooler. did some stripping
in test area, threw the truck on D-6.
test fired wash plant. we are going to
drop punch to $\frac{3}{4}$ " above expanded.
truck on D-6 by 7:30 P.M. hauled in

Track with tools and supplies to complete the job. might arrive tomorrow night if everything checks out. need some more work on road and tailings pond berm. Rained like hell. probably in to Dawson for supplies and wood, mail, recorder, fuel, tomorrow morning.

June 22 to Dawson, back by 1500 hrs. Picked up 1x4 and grub. Saturday Recorder closed dropped off 2 barrels Diesel and organized box. fixed pop motor on cat.

June 23 System up. Reworking beams between tailings pond and creek. Ran about 5 yds of material to test system. material seems to wash OK. No jam ups in the box and feed is good, have to work out push and tail schedule for cat. Need more gas for pump and monitor pump should be brought in tomorrow morning.

June 24 pushed 25-30 yd. Passes Upper Whites G.C.P. fuel tank on 3rd pump leaking mostly much moved with some mixed gravel

June 25 breakdown of 1 mile lease.
Rounded in Powers diggals for
staking. Bought fuel line for pump to
jerry can. plant does 15 yd/hr
when operating in much 40 in loose
and 25-30 yd/hr in packed. Lenses of
whites loose average 2-6 cpp. Area of
old box averages 30-90 or more cpp. Reddish
layer of fine gravel near bottom of cut on
rock should be tested for color. Area
at top of cut should be re-panned for
average cpp.

June 26 Staked 1 mile lease below Bob
claims. ~~what~~ went over to check on
whites. Cat skinner not there. 1 mile
lease appears to be limit of useable
ground due to creek shifting sides of
the valley just below. In this area
the valley is influenced by the Tintina
(Valley) trench. The ground below this
point is very difficult access for work
with equipment and surface values are
only rumors to date.

June 27 to Dawson for fuel. Sluiced about 100 yds in last 2 days. angle of bed pattern lessened and punch in dump box raised to level of stick plate 3" pump housing repaired. Panned redish brown layer at bottom of cut 6 cyp. trying to run through rest of muck from cut

June 28 test sluiced 25 yds ready for first cleanup of 200 yds. mostly mud and some whites. box needs to be raised again. material seems to be finer than $\frac{1}{2}$ " and not much packing in expanded. Will pan it down and take it to Dawson to Bud Mackenzie.

June 29 running mostly sluffed whites. cleanup completed. 6 hrs.

June 30 set fine expanded and mottley in test box to help recovery when box boils. running mostly sluff

July 1 Canada Day Ran some material
to test modifications panned some
samples from cut 20-30 fine

~~July 2 to 3~~ Cpp up top near
face. Ground looks sorted with
clay and a rusty layer of iron
oxidized quartz

17.1
Nico Clifton
BRANDS

July 1 Went up to check values of cat cut to left of Pyp #2. 6 pans patterned off bottom of cut yielded 20-30 colors fine on average 3 pans near top of cut yielded 10-15 colors per pan. Gravel whites appear unsorted and veined with stained iron oxidized quartz.

: Cat time 4 hrs

July 2 Rechecked cut up top 6' deeper down. 5 pans yielded 2 fine per pan. Still encountering layers of iron oxidized quartz. Black sand increasing but does not appear to carry much value. Due to nature of whites it is believed this material has been moved in recent history. To Dawson City Economic Development Bone Fishing sign on door. Dawson Mining Recorder. Picked up camp water at Willow Cr. Ran 28 yds of material through test sluice and recorded 1 mile lease staked 26 June by myself.

: Cat time 4 hrs

July 3 Went to Dawson City to drop off Remittance. Picked up fuel and fresh food. Visited Fork Thompson and Ray layout for info on creeks. Ran 15 yds of material through test box from white mixed

Cut time 2 hrs.

July 4 Ran 250 yds to date of various cross sections of whites including 25 yds today. We are attempting to cut down through the white channel to insitue gravel and hopefully to Rock. We have also attempted a surface push to locate high levels between Pop #1 and old cut. Surface whites were located 150' to left of old cut about 120' off valley floor. Pushed down 1 1/2' x 50' x 6" of moss 1' of overlying gravel and into white channel. four color panned 2 per pan. 2 pans taken.
Cut time: 2 hrs

July 5 Ran tracks off cut on side hill.
Tracks back on by 02:30. Cut off
new cut back on old cut.
: 3 hrs cut time

July 6 To Dawson for shower, laundry, Gub,
Picked up camp water at Willow Cr.

July 7 Down to check on old creek bed
below claim B-10. Creek is cutting
a new channel in this area which
enabled pans to be taken of the
old creek bed. 12 pans taken on
4 concentration points along 500'
of old bed yielded 4-9 cgp, usually
3-4 coarse and the rest fine. Area
appears economic from surface
tests with pan and would make a
good place to target test for old
channel. Area is Class II stream
about 20 meters in width. Boulders
well compacted with lots of quartz
coated boulders 6"-10" in diameter
fine sized colors. material should
run well in a classifier

July 8 Inspected lower leaves and panel
from Excavator hole near Clear Cr
bridge 3 pans yield 2-4 cpp. Tried
to find Miner who was looking for
ground named Lou Witley of
Sacramento Calif but apparently
he left for Dawson City night before

July 9 continuing to rock in old cut
down around 12' from surface still
encountering iodized quartz with
pans yielding same 2-4 cpp results.
water is flowing from old cut up
top row causing difficulty with
cat traction. Ground appears to
(sponge out) as if it were a sink
hole. Material is not in situ.

Cat time 6 hrs.

July 10 Cat pushed down another 3' encountered
brackish rock quartz stain black
leaves non pans yield 2-4 cpp
Cat time 3 hrs

Cat time 2 hrs

July 11 To Dawson overnight to arrange emergency financing from Family

July 12 Shower Food Fuel and Financed.
Bark on Clear Cr by 2 o'clock, recut except trail across valley due to rain wash.
Checked on cat push with 2-4 cpp more oxidized (iron) quartz. Colors on 3 pans appeared slightly larger in size. Cat down approx 18" from old surface. Water seepage becoming a problem.
: cat time 4 hrs

July 13 Water for camp from Willow Creek straightened camp and hauled garbage to clean dump. Fire in area of gravel lake causing concern

July 14 Cut Fire guard around camp. up to check cat push. Cat down about 21" No sign of rock. Encountered a layer of clay at 21' level. 2 cpp plus bright red oxidized quartz.
: Cat time 2 1/2 hrs

July 15 Cat encountering bad sloughage
in cut. Almost buried twice.
Sloughage cleared. water is flowing,
causing problems with cat push
still at approx old level. Check
water flow #2 pup (dry).
Cat time 4 hrs

July 16 down around 2.5' in cut. Cat
stuck. No sign of rock or water
while channeled, pans average 2
egg. 4 taken. 2 dead pans. Cat
out by 1800 hrs. Cut to be
abandoned temporarily in favor
of new test right between #2 pup
and old cut but 20'-40' higher.

Cat time 4 hrs - 32 ± hrs to date

July 17 Panned new cut to left of #2 pup
2 fine egg. Pup #2 below rock jam
2 fine 4 microscope. Revisited
access trail with axe.

July 18 Cat exposed white channel
Between #2 pup and old cut. Width
appears 125' wide. Whites appear
pure on uphill side fading to gray
on downhill side.
Cat time 2 hrs

July 19 Surface panned exposed 125'
cut from lower to higher every
30 or so feet. 2 pan averages.
2-3 spot #1, 2-3 spot #2, 2-3
spot #3, 4 spot #5
cat will attempt parallel cut
in this area.

July 20 Rained out

July 21 Cut to left of old cut $6\frac{1}{2}'$ down row
2-3 spp. fine still pure white no
indication of oxidation however
material is extremely fine like
talcum powder. Busted cat manifold
Cat time 2 hrs.

July 22 Panned up #2 pup 2000'
every 100' or so. Pans vary from
nothing to 24 epp some coarser than
average run. No indications of
rock from side walls. whites disappear
100' higher than old dyke.

July 23 Dinner for Slower, Mail,
Repair of cat stack and manifold.
cat reassembled by 2100 hrs.

July 24 Cat push continuing between #2
pup and old cut pans 2-4 epp & taken
2 dead pans whites still pure at 4'
Cat time 4 hrs

July 25 Up to check Pup off left limit of
Ray 6 on Clear Cr. Pans yield
15-20 epp fine out of water hole
extent of travel should be checked.
Cat unperized at 4 hrs running

July 26 To Dawson City no indication
of extent of gravel yet.
Contacted Economic Dev in
Whitehorse

July 27 Took day off. Planned pup ^{deaths}
right limit Prospect attack lower

July 28 For Whitehorse By myself

July 29 in Whitehorse seen Economic
Development