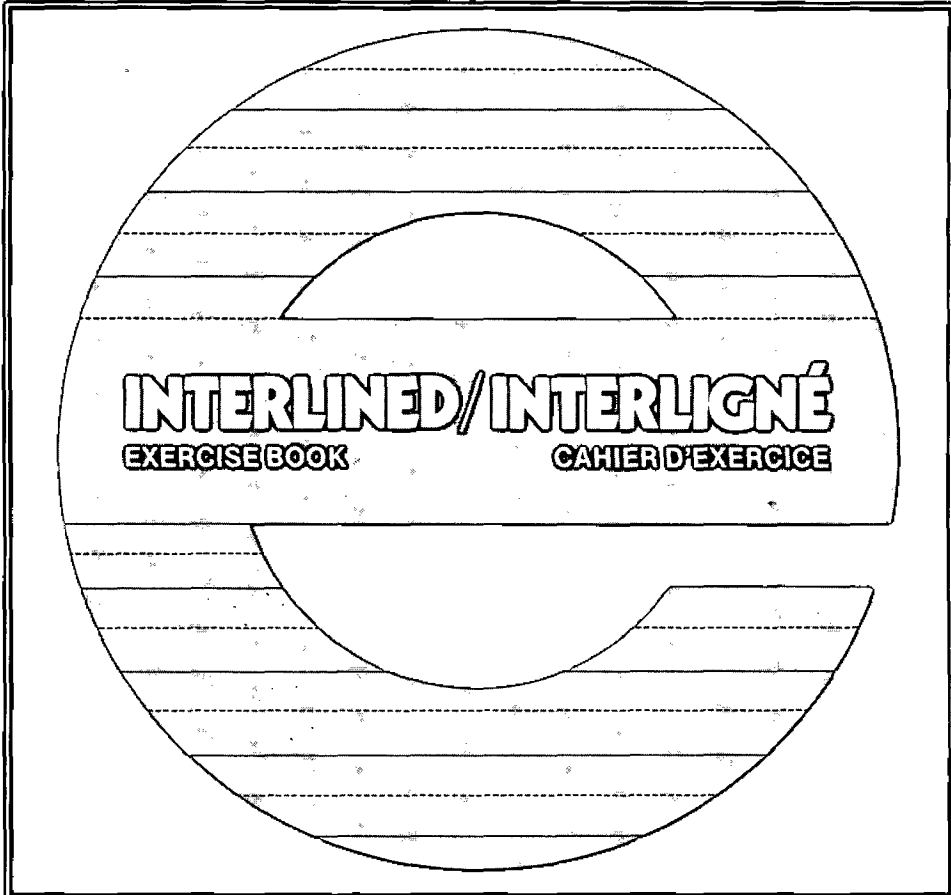


YM1P90-068
YM1P91-019

Keystone®

LC
SHOPPERS
DRUG MART
\$ 69D

EXERCISE



22.5 cm x 18.1 cm 8 7/8 in x 7 1/8 in

NAME/NOM Mystic Currie

SUBJECT/SUJET Mining Incentive Program

SCHOOL/ÉCOLE Protect Resources & Prospecting

MADE IN CANADA  FABRIQUÉ AU CANADA

EX72-IL

Day 1 May 7/91

getting Equipment Ready
for prospecting

May 19 91

May 8/91 Farm to McQuesten stopped
in at Whitehorse seen Dove Downing
Day 2 about prospecting advance.
arrived at McQuesten 6: PM
Weather sunny

May 9/91 weather sunny
set two way Radio up started
Back Hoe up moved in to 1 mile.
Day 3 Lease project # 2 Rose.

May 10/91 weather
Rain all night to noon
Back Hoe stuck most of afternoon

May 11/91 weather
cloudy sunny intervals
~~to~~ SE Leonard went on Back Hoe
Garth had one so back to work.
short day.

May 12/91 weather
sunny
Day 4 Left Garth working on property
went up Penikese Highway 32
miles Check out Camp site
mile 20.5 from turn off.
took a few samples. Brake Hydraulic
Line.

May 13/91

weather
cloudy Rain intervals

Worked on Back Hoe, Fixed Hydraulic Lines
Took pipe off & welded it

May 14/91

weather
Rain showers. sunny intervals

got finished trench on property
15 X 4 X 5 yd. approx 300 cu yd.
sampled with pan colour.

May 15/91

weather
cloudy sunny intervals.
Cold

tried to cross swamp with
Back Hoe stuck sampling &
Hand sluicing, Not much Luck

May 16/91

weather
sunny

got Back Hoe out of swamp
Break steering line Hydraulic

May 17/91

weather
Rain showers

Hand sluicing & panning
fair colour.

May 18/91

Rain all day.
worked around camp

weather

May 19/91 Rain all day. to rest
to do anything. went to
20/91 whitehouse

May 21/91

whitehouse to me quarters
Rain showers

May 22/91

weather
sunny cloudy intervals

Brought Back Hoe Back in to camp
cut more claim line.

worked on Back Hoe in Evening

May 23/91

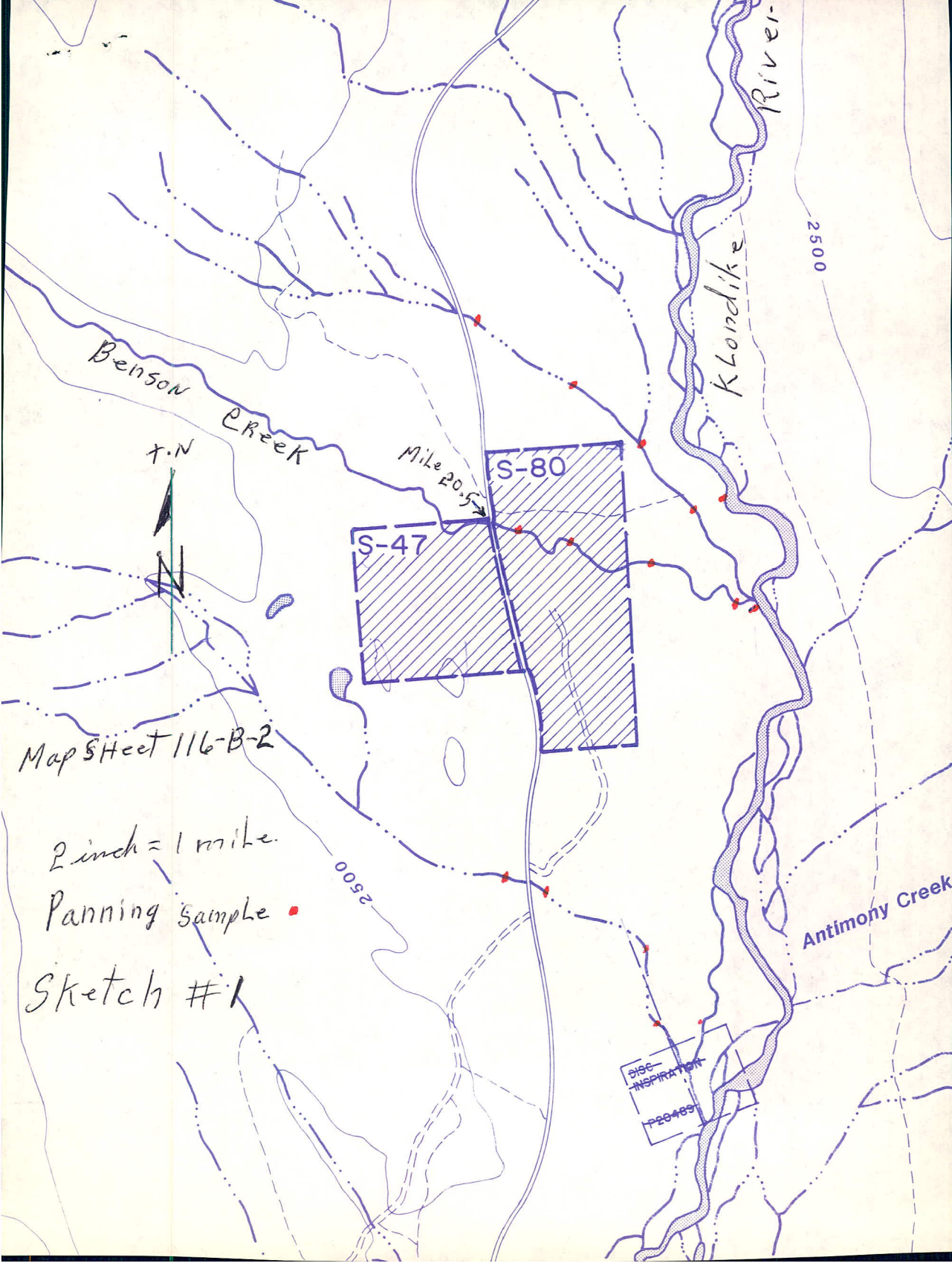
weather
sunny

Finished line cutting & sampling
an 1 mile lease. Keeping claims
#5 to #10 on Lease.
see sketch & work report on Base #
2 Project

May 24/91

weather
sunny

worked on Robin #1 claim
with Back Hoe put pit in
see sketch on Report.
went to Dawson gold show
with camper



Benson Creek

Klondike River

2500

T.N

Mile 20.5

S-80

S-47

Map Sheet 116-B-2

2 inch = 1 mile

Panning sample •

Sketch #1

2500

Antimony Creek

DISC
INSPIRATION
P29489

May 25/91

weather

Dawson gold show

sunny

May 26/91

weather

Rain showers

Hand sluicing & panning sample
on Rabin #1. Claim good colour.
~~Loaded camp~~

May 27/91

weather

sunny

Day 5 went to Mayo recorded work on
lease & up Dempster Highway
mile 20.5 with camper.
Left Garth in charge of camp at McQuesten.

May 28/91

weather

sunny

Day 6 sampled by panning on Benson Creek
from Highway to Klondike River
could only get down about 12 inch's.
ground still froze up, 2 clows
in one pan about 400 ft East of
Highway. see sketch #1

May 29/91

weather

sunny

Day 7 sampled next creek north
of Benson from Highway to
Klondike River ice still in creek
in spots approx 8 to 10 inch
thawed out see sketch #1

May 30/91

weather

sunny

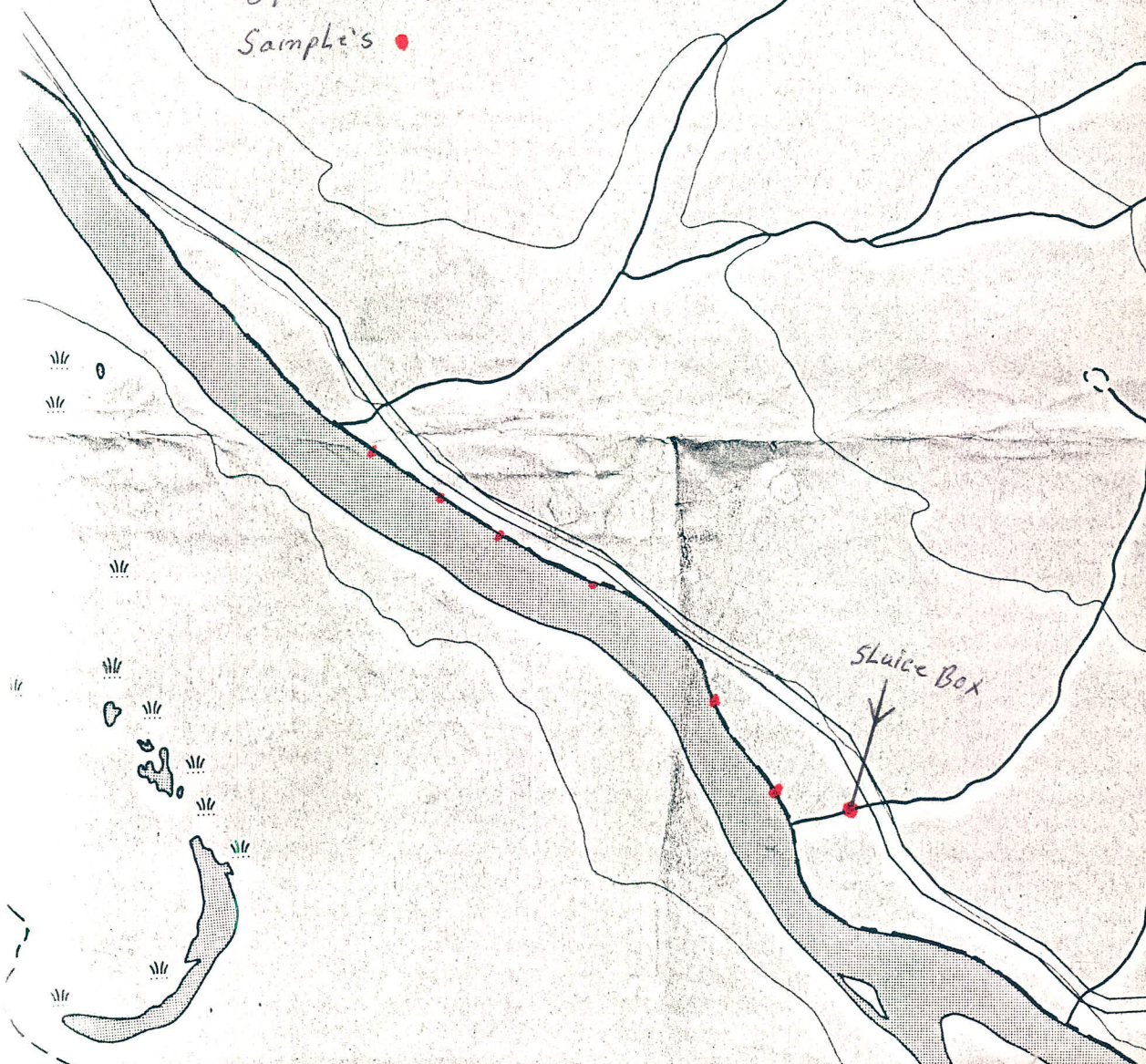
Day 8 checked creek south of Benson old
claim on creek No luck ground
frozen will come back later.



3000

MAP SHEET
115-P-7
Scale 2 inch = 1 mile
2500

Sketch #2
Samples •



Sluice Box



May 31/91

weather
sunny some clouds

Day 9

Loaded up camper & back to
McQuesten will go back in July
& aug. ground may be thrown out.

June 1/91

weather
Rain most of day

Day 10

Worked on flat tire on back wheel
ordered one from van every at
Dowson tube & liner \$185.00

June 2/91

weather
cloudy & sunny

Day 11

panning on the Stewart River
water to high colour in most places.
south of moose creek.
see sketch # 2.

June 3/91

weather
sunny & hot

Day 12

put sluic box on creek
about 300 ft up from Stewart River
good colour only off bed rock
on edge of road see sketch # 2
Bed rock quartz schist to quartzite

June 4/91

Day 13

sketching same as day 12
sketch # 2

weather
sunny & Hot
see

June 5/91

Day 14

picked up Bot & equipment out
of creek & went to White
horse. to see Dove Downing.

weather
sunny few clouds

June 6/91

Day 15

in Whitehorse seen Rod Hill every
thing fucked up Dove gone.

June 8/91

Whitehorse to Mc Queen with
Cliff Crain Operator & Macanic for
780 Back Hoe

June 9/91 to June 26/91

weather
Rain showers

workman Chew claims

1 mile Lease in to Rose claims.

see project Rose #2 work sheet

43 days in the field at present.

WESTAB

40 pages

91-019

metric ruled
exercise book

cahier d'exercice
réglage

name • nom

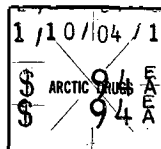
Maryl N. Currie

subject • sujet

Prospecting / 91

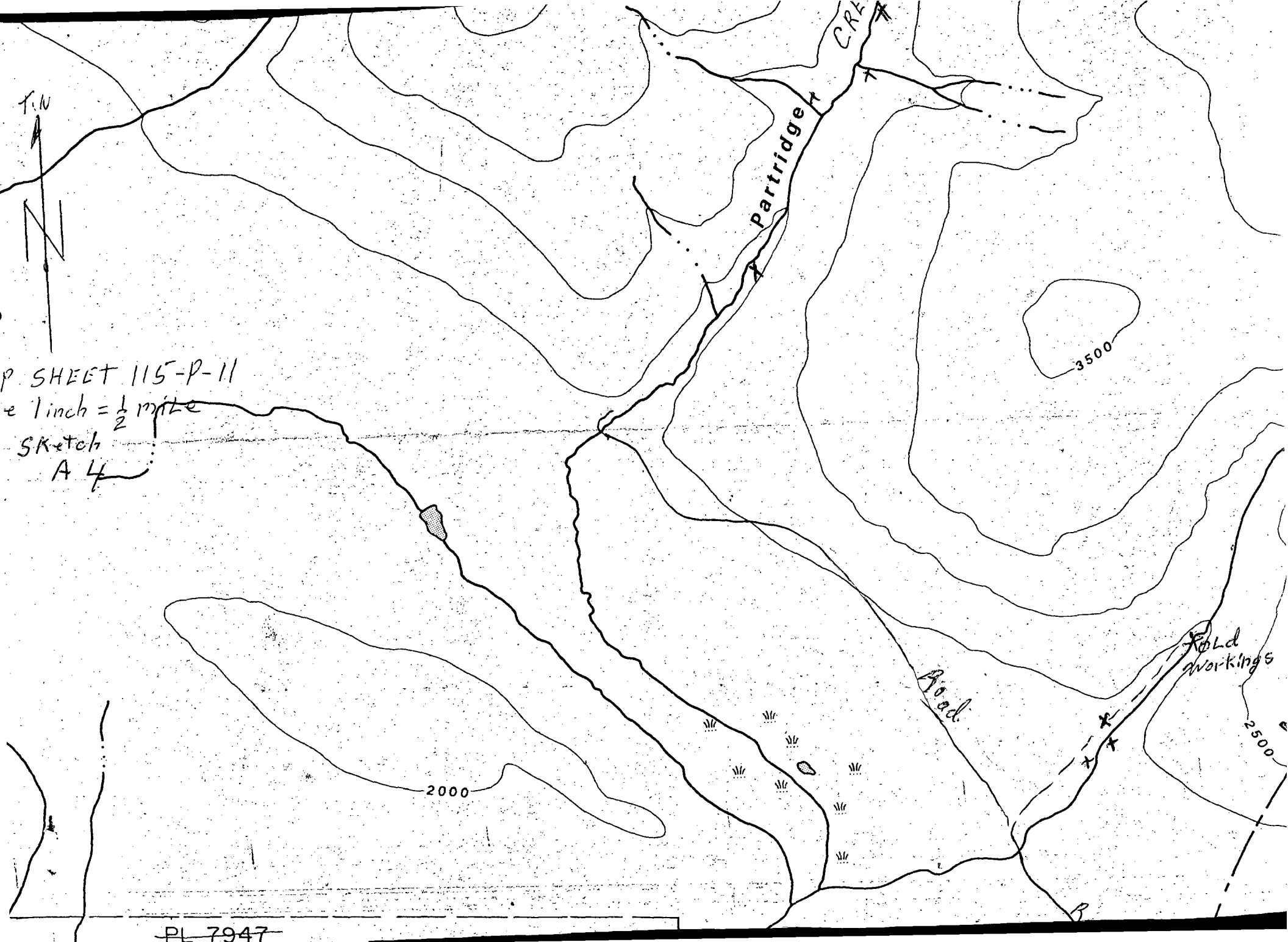
10 7/8" x 8" • 27.6 cm x 20.4 cm

distributed by • par
Shaben & Hamdon (1980) Ltd.
Edmonton, Alberta T5L 2H7
MADE IN CANADA • FABRIQUÉ AU CANADA





P. SHEET 115-P-11
1 inch = 1/2 mile
Sketch
A 4



July

Day 16 July 3/91 weather
Rain showers all day
paned out samples at camp in
between showers. poor results.

Day 17 July 4/91 weather
Cloudy Rain showers.
went to Partridge Creek did some
panning south of old workings, a couple of
specks of gold in every pan a very small
hard to pan a lot of shell rock.
see sketch A-41

Day 18 July 5/91 weather
sunny & hot
Went to Maya. Recorded Rose Claims & Groups
Chew #. 4 & 5.

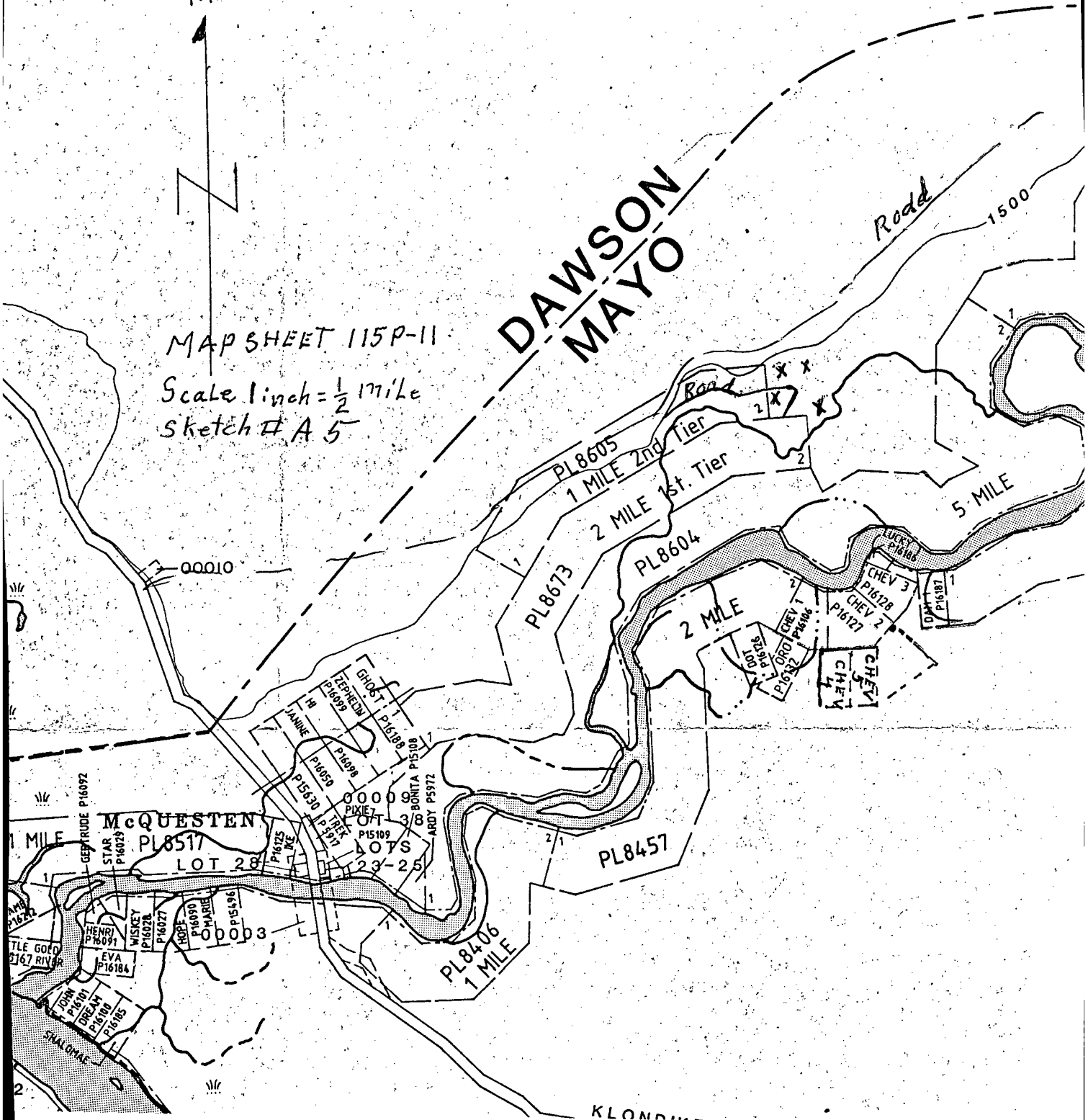
Day 19 July 6/91 weather
sunny & hot
Drove up to Partridge Creek walked
from old turn off to workings ~~up~~
~~walk~~ up to north fork panned up creek
stayed over night

Day 20 July 7/91 weather
sunny & hot
walked up Partridge Creek to
approx top took a couple of pans.
2 speck of gold out of 12 pans.
Returned to camp. 10: PM.
see sketch A 4

T.N

MAP SHEET 115P-11
Scale 1 inch = 1/2 mile
Sketch # A 5

DAWSON MAYO



KLONDIKE

July 8/91
Day 21

weather

Rain in morning

Went up ^{to} Vancouver Creek & Back
Nortex set up on creek plus a couple
of others small set ups. Nortex set
up approx 100 cu yd per Hour good
gold recover in sluice box on machine
Broke Hydraulic to transmission on
truck on way Back

July 9/91
Day 22

weather

Cloudy & Cold

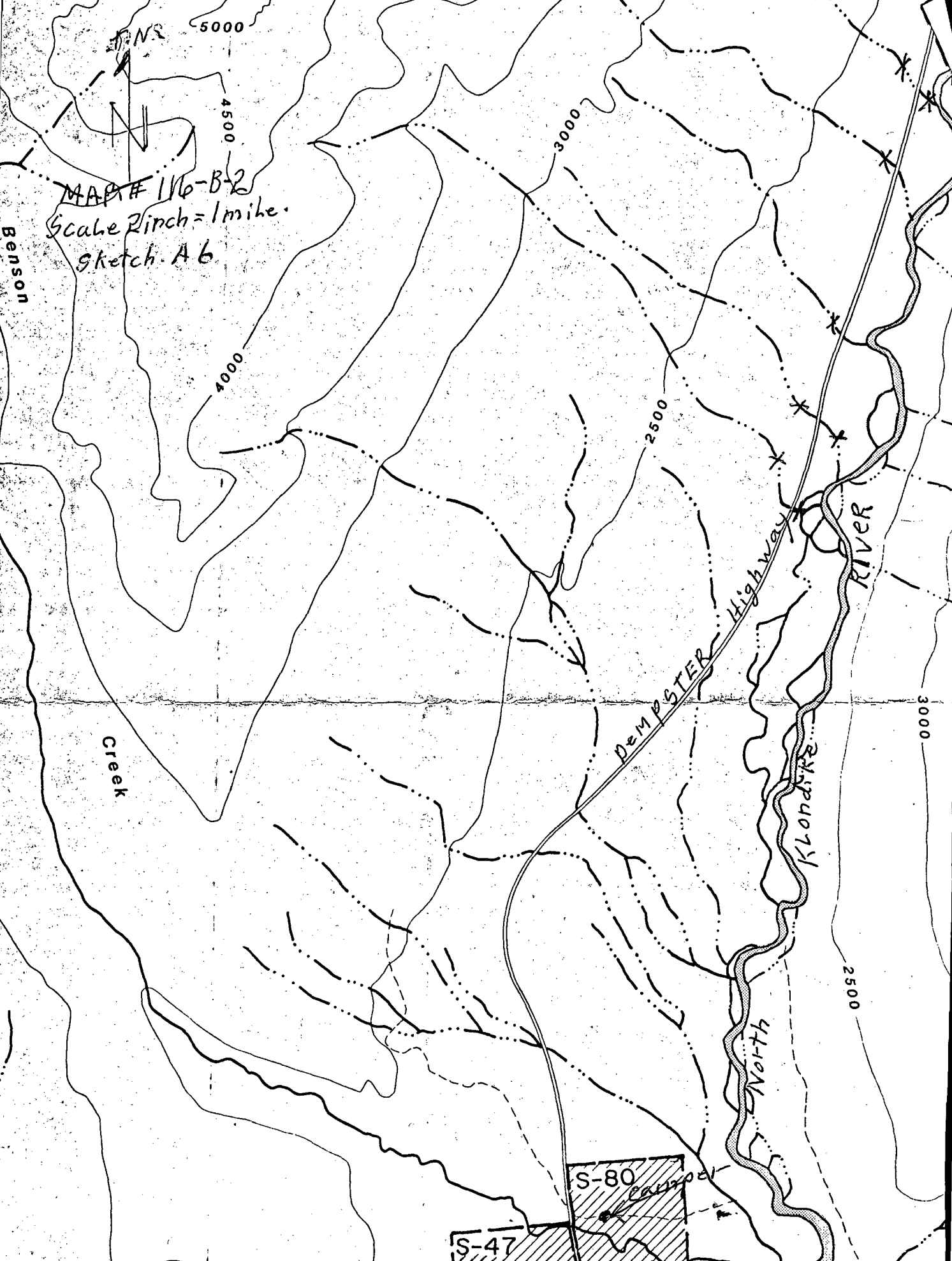
Fixed Hydraulic line on truck
Came Back to camp, seen some
of Nortex gold off Vancouver Creek
their was a few nuggets $\frac{1}{2}$ Long &
as Round as a pencil.

July 10/91
Day 23

weather

cloudy & Cold

Took Back hoe out for test Holes &
Made Road Down Hill to creek put 4
test Holes down with Back Hoe Hit
Frost at 3 to 4 ft. took samples
5 gal Bucket out of Each Hole.
East of 1 mile lease # PL8605 see sketch
A 5



MAP # 116-B-2
Scale 2 inch = 1 mile.
Sketch A 6

Benson

Creek

Dempster Highway

Klondike RIVER

North

S-80

Camp

S-47

5000

4500

4000

3000

2500

3000

2500

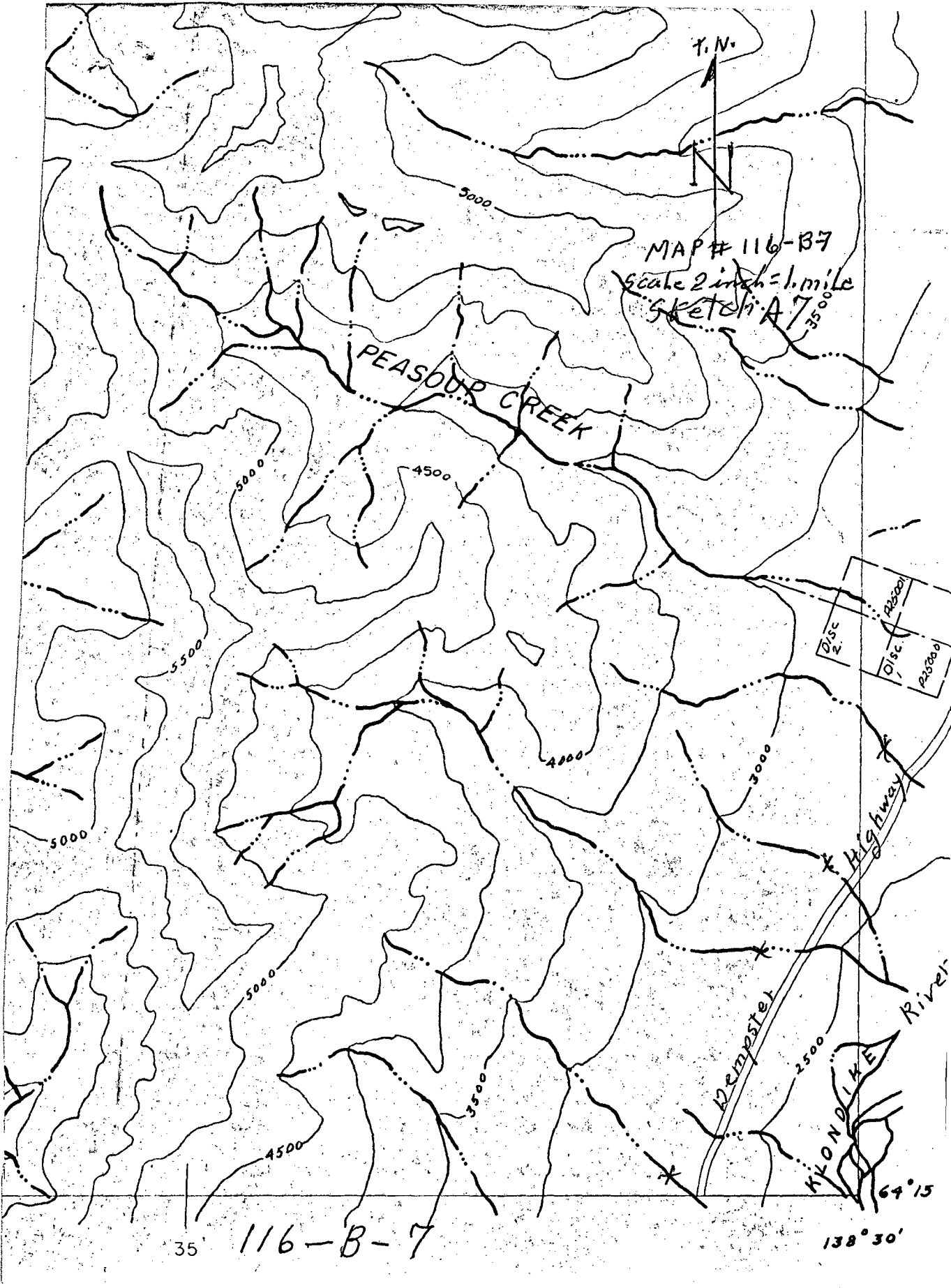
Day 24 July 11/91 weather
Rain showers.
paned out samples from yesterday
got Nothing.

Day 25 July 12/91 weather
Went back & panned at creek & Holes.
paned at creek got a couple of Clowns.
out to Holes got Nothing. give up on
that area.

Day 26 July 13/91
To Whitehouse Emergency call,
Family matter.

Day 27 July 16/91 weather
Sunny.
Loaded up Camper went up
the Dempster Highway very
smokey..

Day 28 July 17/91 weather
cloudy Rain intervals
panned on some creeks of Klondike River
west side one or 2 Clowns in every
pan small see sketch # A6 all
surface panning.



July 18/91

weather
Rain intervals

Day 29

sampled up to Peasapp Creek.
tried to dig down frost at 2 ft got
a couple of clours done to go up
Peasapp Creek later on Heavy smoke
in area. Have to leave till Aug. Cause
of fire. return to McQuesten
see sketch A7

July 19/91

weather
sunny.

Day 31

stayed at Dempster turn off over night
McQuesten at 10: AM run load. Camper
worked around camp panned some samples

July 20/91

weather
Rain showers.

Day 32

spent day shoveling in to sluice Box
at Creek approx 7^{mile} North of Stewart crossing
good colour if at Bed rock Hard sluice
ing By Hand, Bed Rock Quartzite shist.
See sketch A8 over

July 21/91

Day 33

worked on Creek 8 miles North
of Stewart shoveled in to sluice Box
most of day no Bed Rock very
few colours.

See sketch A8 over



3000

MAP SHEET
115-P-7
Scale 2 inch = 1 mile
Sketch A & 2500

STEWART RIVER

8 mile



July 22/91

weather
sunny & Hot

Day 34

paned up creek approx 10 mile from
Stewart Crossing got 2 Colours out
of 14 pans, so give up!
see sketch A 8

July 23/91

weather
sunny

Day 35

spent part of day on Rose claim with
Cliff, went on up to old mine called
Little Duck & SABRE did some panning
got a little colour.

see sketch A 9 over

July 24/91

weather

Sunny Rain in afternoon

Day 36

went up above SABRE claim panned
up creek $\frac{1}{2}$ mile Results nilk Rain at 12 Noon
Returned to camp put well in at Cabin

July 25/91

weather

Sunny Rain shower after Noon

Day 37

went back up to Lost Dutchman claim
did some panning down to the McQueen
River very few Colours, all
surface panning

SEE sketch A 9 over

MAP SHEET. 115-P-11
Scale 1 inch = 1/2 mile
Sketch A9

~~DISTRICT~~
~~DISTRICT~~

~~MINING~~
~~MINING~~

~~EN~~

00002

PL7874

2 MILE 2nd TIER

ELLEN 97
R5744
JENOR
PI5745
PI5746
LITTLE DUCK
CO-DISC.
LOST DUTCHMAN
SABRE.
CO-DISC.

3 MILE

3000

July 26/91

weather

sunny

Day 38

went up to Vancouver Creek
did some testing east of claims up against Hill
~~then~~ got a few specks in one hole.
SEE sketch A 10 over

July 27/91

weather

sunny

Day 39

at Vancouver Creek testing west
of claims south of Road Hole approx 2 ft
paned samples got colour in all
samples. Hope to do more work later
see sketch A 10 over

July 28/91

weather

sunny Rain in after noon

Day 40

took Rear End out of truck on
Vancouver Creek Road, got truck
back to camp. took Rear end apart.

July 29/91

weather

cloudy Rain all after noon

Day 41

Went to Mays Pump for parts
got some ordered parts from
Stewart Crossing.

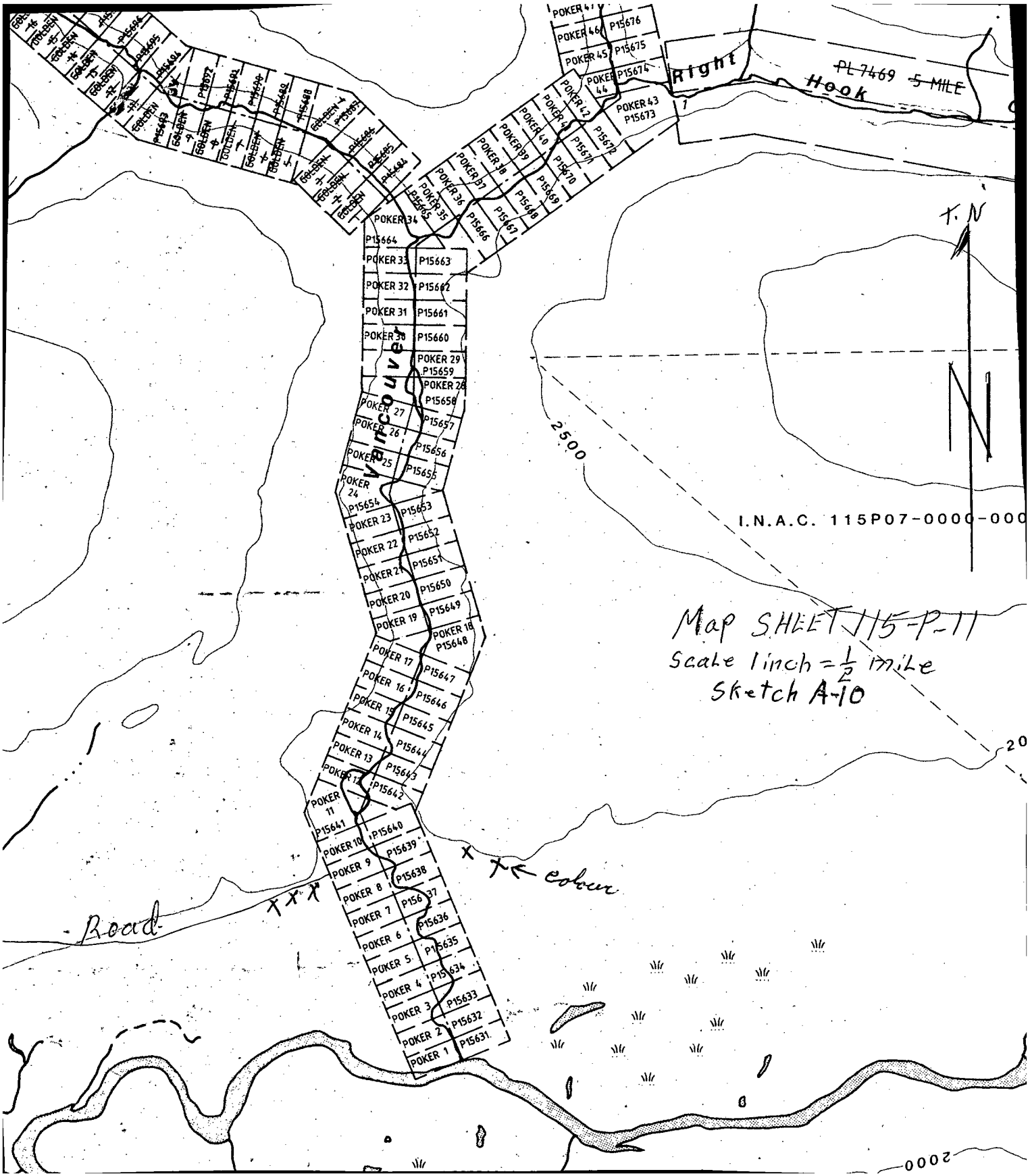
July 30/91

weather

sunny

Day 43

Went to Stewart for parts they
never got in till 9: PM.
cliff in from Rose claims



PL 7469 5 MILE
Hook

Right

T.N



I.N.A.C. 115P07-0000-000

Map SHEET 115-P-11
Scale 1 inch = 1/2 mile
Sketch A-10

2500

VINCENNE

Road

← color

2000

July 31/91

weather
cloudy.

Day 44

Fixed truck in morning passed
samples out at camp. up to date,
going back to Dempster Highway.
When back from whitehorse

~~July 31/91~~ Aug 1/91


Day 45

weather
Rain showers

went to whitehorse.

91-019

Hilroy

Northern H6
 78F46
 10

 709-12974
 \$1.69

interlined
exercise book

cahier
interligné

RULED 7/16" — 11 mm BETWEEN SOLID LINES

name - nom Meryl V Currie

subject - sujet prospecting / 91

72 pages

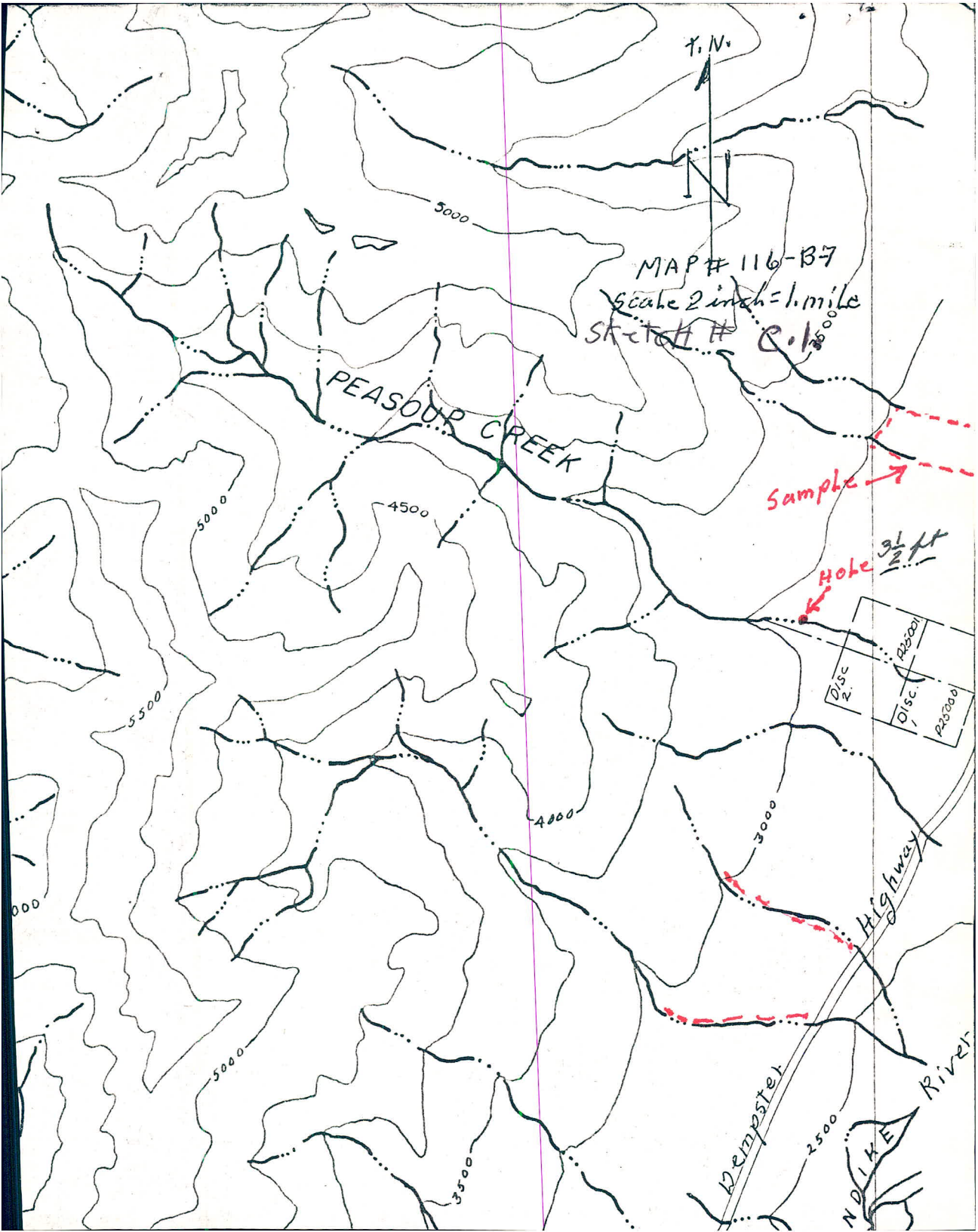
23.1 x 18.1 cm

IN 152

Hilroy M6E 2R9

Made in Canada — Fabriqué au Canada

no 12-152



T.N.

MAP # 116-B7

Scale 2 inch = 1 mile

Sketch # 2.1

PEASOPP CREEK

Sample →

Hole 31 ft



Kempster Highway

NDIKE River

Aug 7/91

Weather
Rain Showers

Day 46 Left Whitehorse to McQuesten,
Loaded Camper to Dempster arrived at
Peasoup Creek 10:30 PM.

Aug 8/91

Weather
Cloudy sunny intervals

Day 47

Worked up Peasoup Creek approx 1 mile
panning got a few specks of gold
approx $\frac{3}{4}$ of a mile up from Highway.
will try to get down Deper.

Aug 9/91

Weather
sunny.

Day 48

Went back up Peasoup Creek
put Hale down approx $3\frac{1}{2}$ ft
used Explosives to freeze ground.
got only a few clumps panning
see sketch # C.1.

Aug 10/91

weather
Rain

Day 49

Rain all day panned samples.

Aug 11/91

weather
Sunny

Day 50

sampled ^{up} next small creek north
of Peasoup creek & down next one north
approx 1 1/4 miles up creek No colour's
in panning. see sketch. C.1.
No colour in samples.

Aug 12/91

weather
Sunny

Day 51

sampled 2 creeks one mile & 1 1/4 miles
south of Peasoup creek, panned later
see sketch C.1 No colour in samples.

Aug 13/91

weather
Cloudy sunny intervals

Day 52

Went up Benson Creek approx 2 1/4 miles
putting Hole down, with Explosive's
approx 3 p.m. see sketch C.2.

Benson

MAP # 116-B-2
Scale 2 inch = 1 mile.
Sketch C.2.

4500

3000

4000

2500

Creek

Hole
5 ft

Hole
4 1/2 ft
gold.

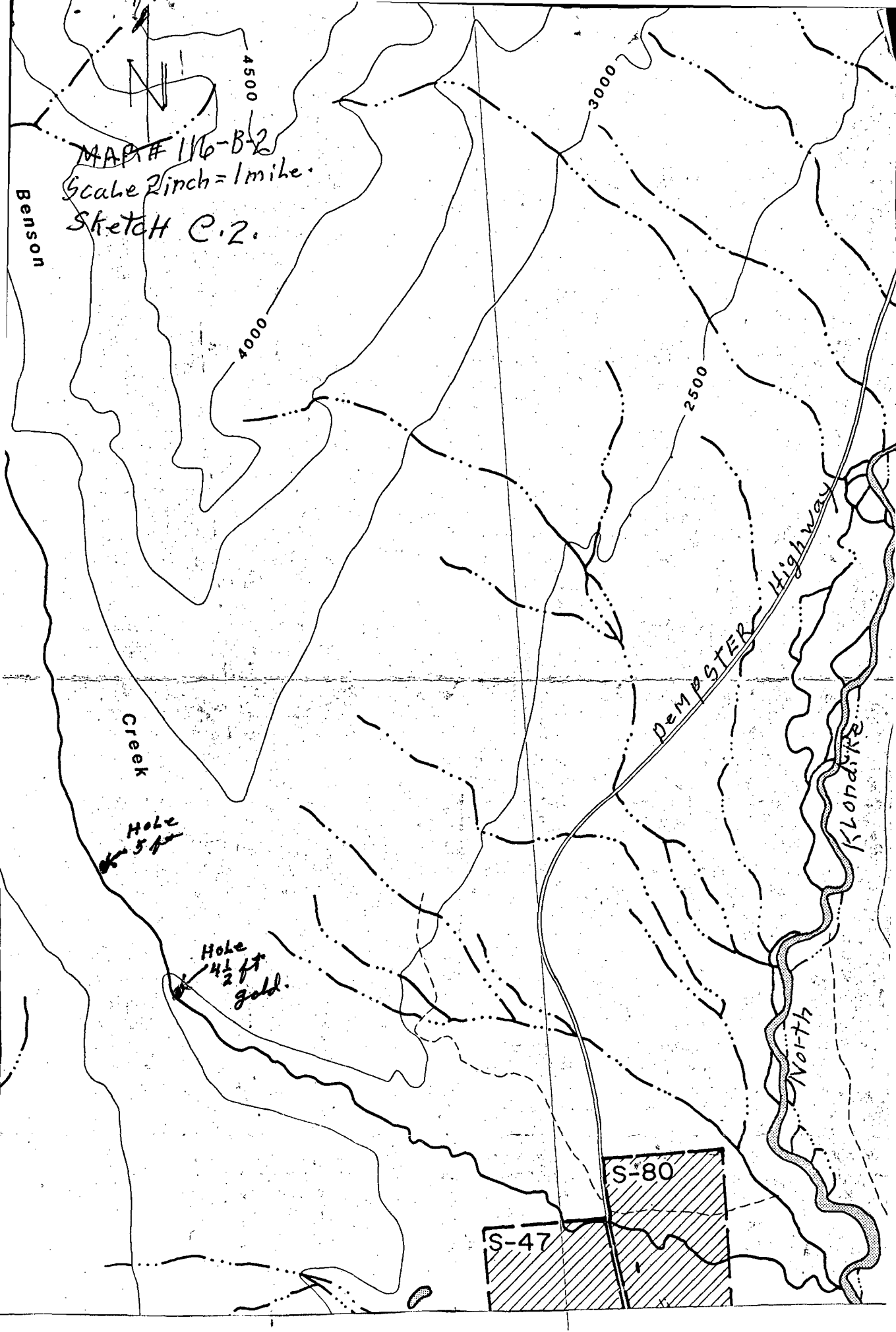
DEMPESTER Highway

KLONDIKE

North

S-47

S-80



Aug 14/91

Weather
Cloudy sunny intervals.

Day 53

Worked on Hale up Benson Creek
down $4\frac{1}{2}$ ft Frozen ground from
3 ft Down Hard time to get down $1\frac{1}{2}$ ft
put gravel through sluice Box
to narrow

Aug 15/91

Weather
Cloudy sunny.

Day 54

Put gravel through sluice Box
got approx 20 colours out of
200 shovels of gravel Colours small.
see sketch C.P.
I will go Back up Benson creek later.

Aug 16/91

sick ?

Aug 17/91

Weather
Rain all night

Day 55

Rain showers all day.
panned out samples in camp.



MAP SHEET 116-B-2
Scale: 2 inch = 1 mile
Sketch. C.3.

2500
Dempster Highway

Hole

RIVER

Klondike

North

3000

2500

BENSON CREEK

S-80

S-47

50

Aug 18/91

Day 56

Weather
Cloudy Cold.
Rain showers

Put Hale Down on Klondike River
North west side down 3 ft 2 ft mud
1 ft gravel large Balders. panned gravel
got ~~nothing~~ 4 miles north from Bearson Creek

Aug 19/91

Day 57

Weather
Cloudy sunny intervals

tried Explosive on Hale, to large
of Balders, Hale approx 4 ft

tried panning results nil

See sketch C.3.

Aug 20/91

Day 58

Weather
cloudy sunny intervals

Packed up Back to McQuesten.

Aug 21/91

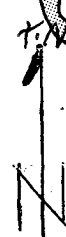
To Whitehorse

Sept 1 to 13/91 worked on project Rose 2.

POKER 2 P156
POKER 1 P1631

Hole
7 ft
200 Colours.

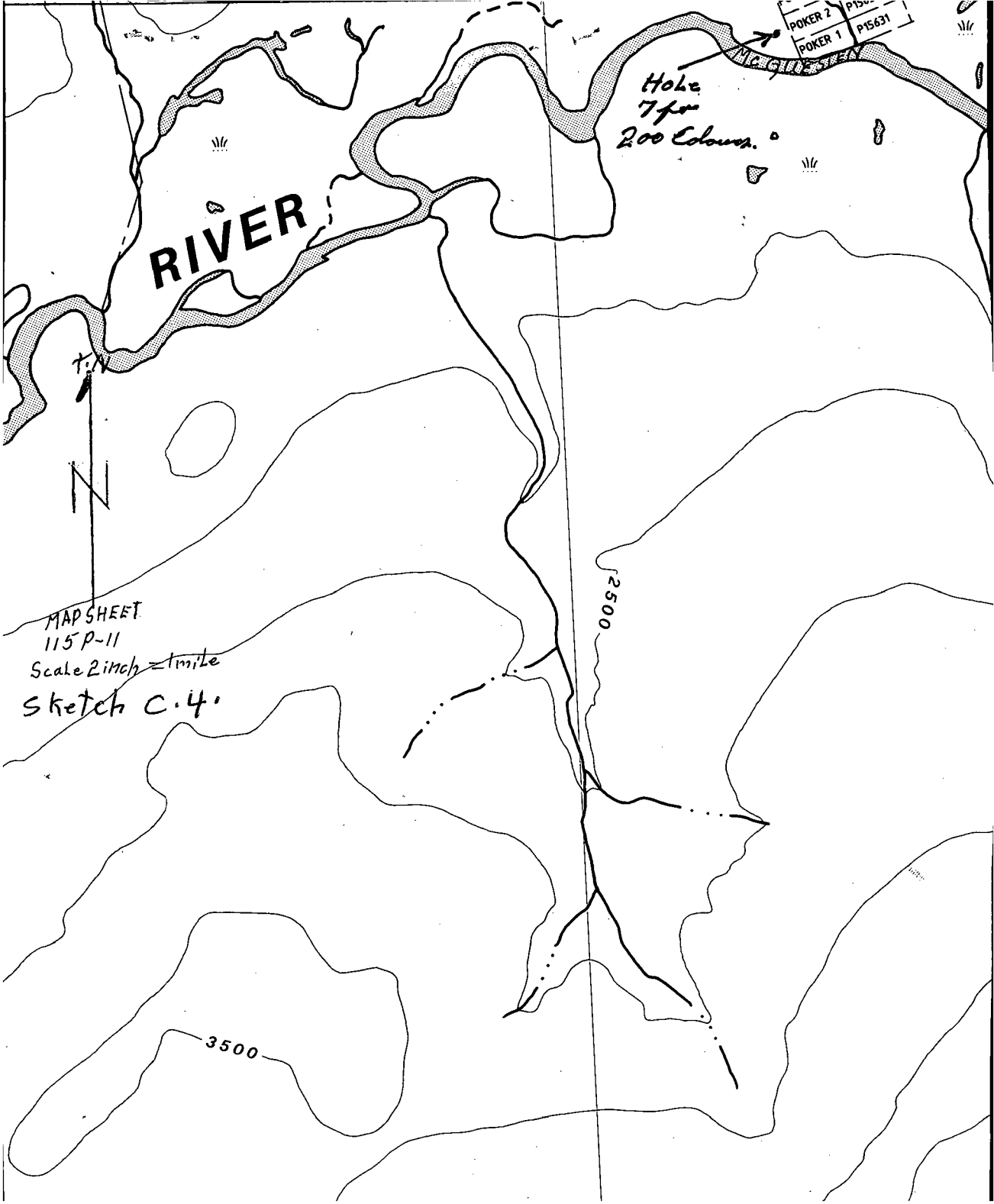
RIVER



MAP SHEET
115 P-11
Scale 2 inch = 1 mile
Sketch C.4.

2500

3500



Sept 14/91

weather
cloudy sunny intervals

Day 59

putting hole down on off me Western
River approx 600 ft north of River
1300 ft west of Vancouver Creek
off of Poker #2 Claim approx 4 ft

Sept 15/91

weather
sunny cloudy

Day 60

got hole down to 7 ft hit water

panned out 5 pans got 5 to 10
colours per pan took 25 gal
pails of gravel for sluicing
see sketch C.4

Sept 16/91

weather
windy showers.

Day 61

~~pan~~ sluiced samples out
very good results about 200 colours
see sketch C.4

Sept 17/91

weather
cloudy showers.

Day 62

panning along Stewart River
good colour in some pans.
see sketch C.5

MAP SHEET
115-P-7
Scale 2 inch = 1 mile
Sketch C.5

3000

Sample
| approx
500' apart



Sept 18/91

weather
Cloudy & showers.

Day 63

Finished panning along
Stewart River. same amount of
colour as day before. 5 to 10
colours per pan
see sketch C.5
Sampled every 500ft approx 2 miles

Sept 19/91

weather
Heavy Frost Cloudy Cold

Day 64

panned out samples at camp
Very poor Results.

Sept 20/91

weather
Heavy Frost

Day 65

got Bad Cold
went to whitehouse.

Sept 28/91
Day 66

weather
windy sunny

Whitahorse To Dempster,
Benson Creek.

Sept 29/91

Day 67.

~~W~~ weather
Cold Rain showers.

went Back up Benson Creek
approx $\frac{1}{2}$ mile up from first Hale
work on Hale approx 3 ft
see sketch C.2

Sept 30/91

Day 68

Heavy frost cloudy sunny intervals
working on Hale on Benson
Creek Frozen ground got
down to 5 ft large boulders.
tried panning a couple clours
see sketch C.2

Oct 1/91

Day 69

Heavy frost at night cloudy
took sluice Box up creek
put approx 100 shovels of gravel
through sluice Box got about 10
clours

MAP# 116-B-2
Scale 2 inch = 1 mile
Sketch C. B.

sample spots

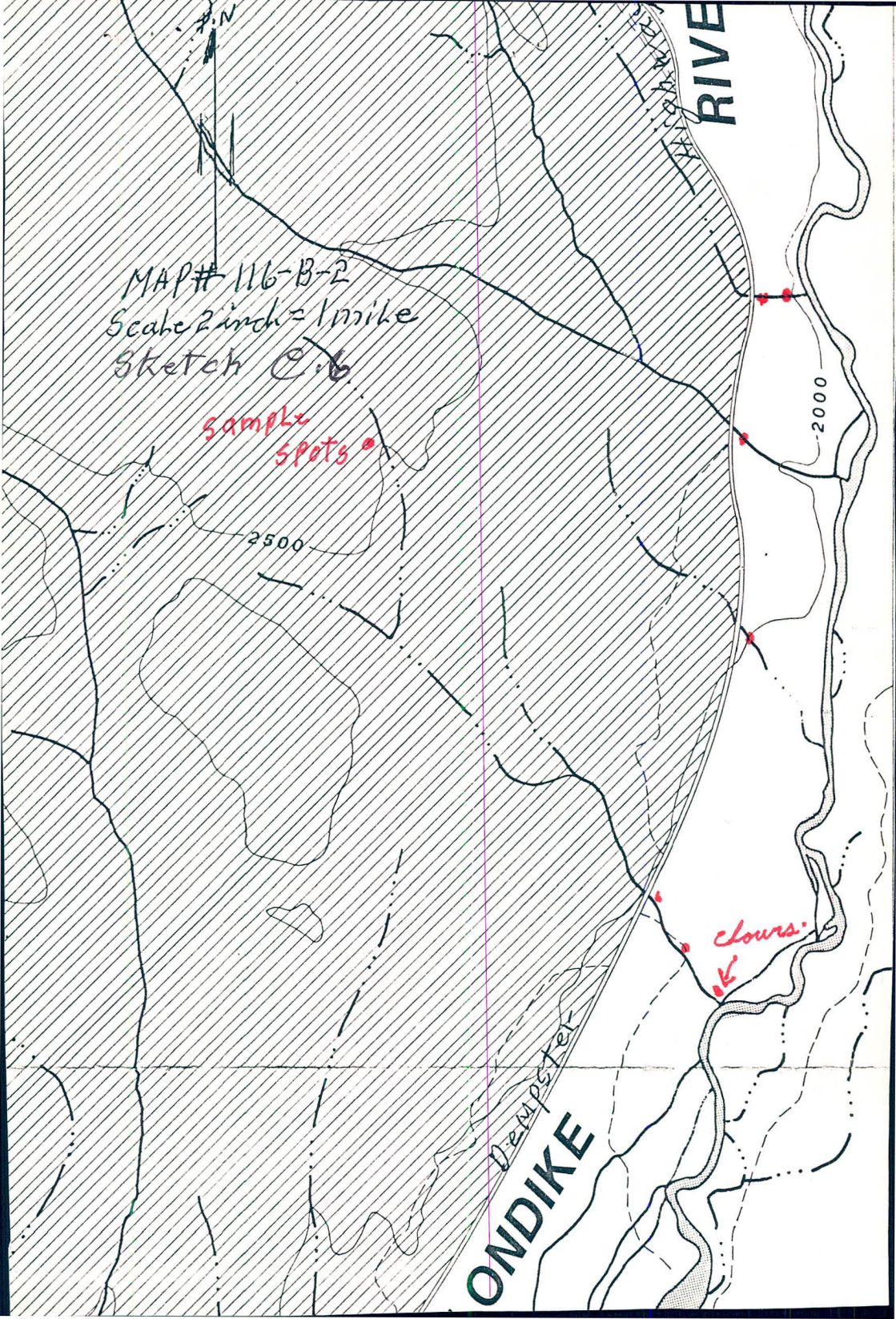
RIVER

2000

2500

clours

Dempster
ONDIKE



Oct 2/91

weather
cloudy sunny intervals

Day 70

Went up Benson Creek approx 4 miles
panned on way Back to Hole.

Packed Equipment Back to Camp.
since sampling no clouds.

Oct 3/91

weather
One inch ice Cloudy

Day 71

sample on a few creeks south
of Benson off Klondike River

panned a couple clowns in
one pan. See sketch C.6

Oct 4/91

weather
sunny

Day 72

Back to McQuester
worked on paper work.

Oct 5/91

weather
rain showers

Day 73

panned out samples at

Camp some from Dempster.

got a couple of colours

Oct 6/91

Day 74

Finish packing out samples.
putting equipment away
for winter.

weather
snow/rain showers

Oct 7/91

Day 75

Cold wet weather to
Whitehorse till weather clears.

weather
snow & rain

I expect to go back up
to McQuesten for another 8^{to 10} days
when weather clears.

I have put 110 days in the Bush
this summer.