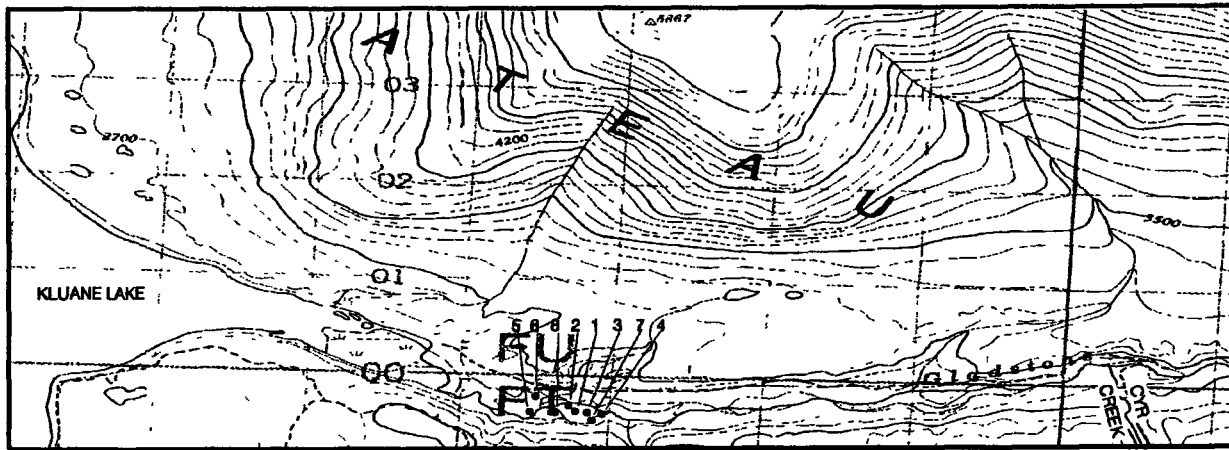


GLADSTONE RIVER PROJECT
TRENCHING REPORT
for
Yukon Mining Incentives Program
NTS 115G07/08
18 November 1991

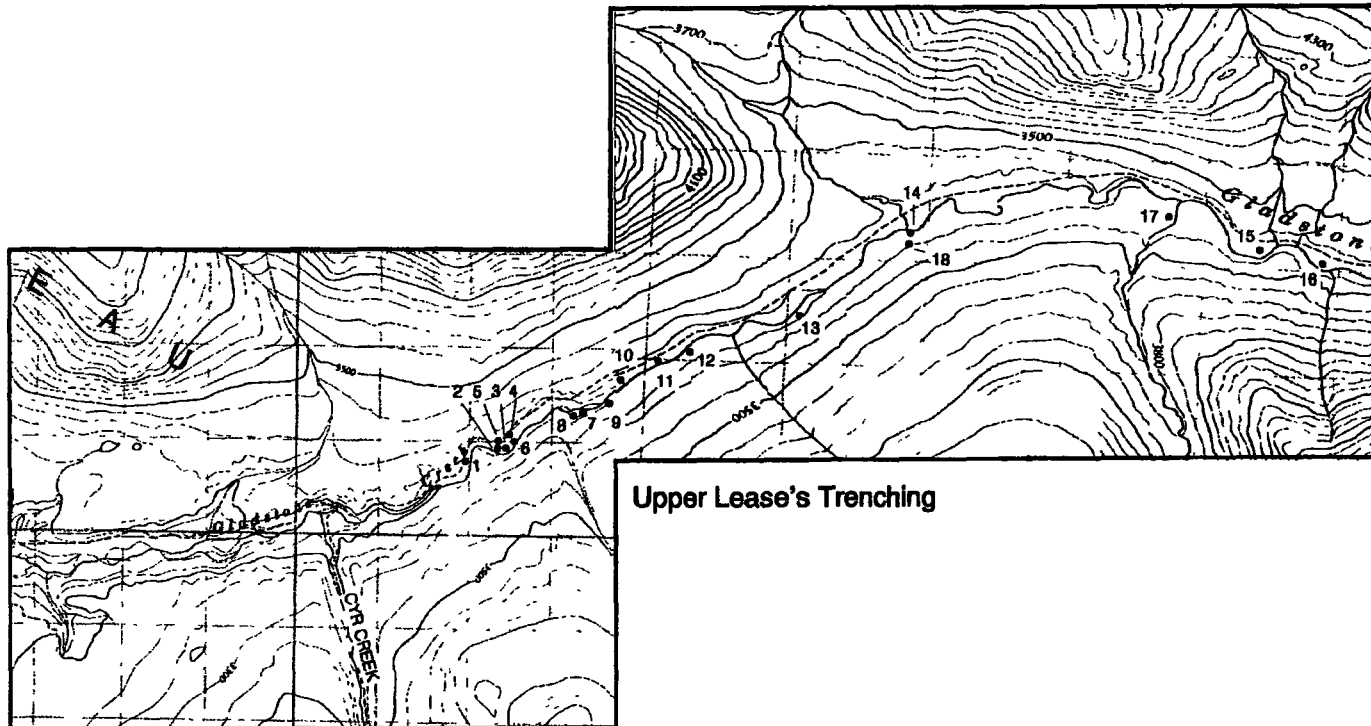
David A. Downing, P. Eng.

91-025
Neil Duncan

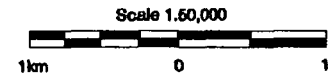


Lower Claims - Trenching

**GLADSTONE RIVER
PROJECT
Trench Location Map
Scale 1:50,000
NTS 115G07/08**



Upper Lease's Trenching



GLADSTONE RIVER PROJECT
Trenching Report

Trench (no.)	Length (ft.)	Width (ft.)	Avg. Depth (ft.)	Max. Depth (ft.)	Location	Trench Description	Sample Location
1	75	20	6	8	3300 ft. from post # 1 north side of creek	False bedrock at surface Side of showing trenched to 8 '(description) flat false bedrock at 8'	(entire depth or at bedrock)
2	80	18	7	8	3600 ft. from post#1 south side creek	clay gravels with large boulders to 5 ft. clay gravels from 5ft. to 7 ft. false bedrock at 7 ft.	surface to 6 ft. gravels above bedrock
3	100	18	10	10	3700' from post#1 south side of river adjacent old river bank	washed gravel thin layer(of what) on false bedrock	(entire depth or at bedrock)
4	85	18	8	8	3800' from post#1 south side of river along steep clay bank	washed gravel thin layer(of what) on false bedrock	surface to bedrock
5	50	20	8	8	3750' from post#1 upstream from trench #3 virgin area	timber,moss, loam removed clay gravels with few large rocks to 30" ? clay bedrock?, what is rest of trench?	entire depth ?
6	65	30	8		3300' from post#1 south side creek along trench #2	clay gravels with large boulders to 5' clay gravels to false bedrock at 8'	
7	60	18	7		8500' from post #1 upstream of pup, south side of valley	brown clay gravels with few large boulders heavy water flow	
8	80	18	9		same as above? right angle to hill and creek	washed gravel to 6' brown clay gravels remaining 3' heavy water flow	

GLADSTONE RIVER PROJECT
Trenching Report

Trench (no.)	Length (ft.)	Width (ft.)	Avg. Depth (ft.)	Max. Depth (ft.)	Location	Trench Description	Sample Location
9	85	20	8	11	11,220' from post#1 south side of valley 30' from river	clay gravels with large boulders to 6' blue clay gravels to 11' ?	
10	90	18	9	13	13,530' from post#1 old creek bed and bank	brown clay with large boulders ,false bedrock old riverbed at centre trench -no false bedrock	
11	65	18	7	8	20,790' from post#1 downstream of pup creek north side of valley	brown clay gravels with few large boulders to 8'	
12	70	18	8	12	21,190' frompost#1	brown clay gravels with large boulders to 12' pumped water out to deepen trench to 12'	
13	80	18	8	10	22,440' from post #1 on old oxbow	washed gravel to 3' brown clay gravels with few large boulders to 10'	
14	85	18	9	11	at post#2 and #1 bordering old river bed	brown clay gravels to 3' clay gravels with large boulders to 11' no false bedrock	
15	85	18	10	13	7920' from post#1	brown clay gravels to 6' brown clay gravels with boulders to 13' coarse clay gravels at 13', no false bedrock	
16	75	18	5	5	10,560' frompost #1	clay layer, then washed gravels water table too high to allow deeper trenching	
17	80	25	8	8	1000' frompost#1	layers of sand, blue clay gravels water table at 6', large flat boulders at 6'	

GLADSTONE RIVER PROJECT
Trenching Report

Trench (no.)	Length (ft.)	Width (ft.)	Avg. Depth (ft.)	Max. Depth (ft.)	Location	Trench Description	Sample Location
18	60	18	5	5	200' from post#1	black loam to 2' gravel and sand with blue clay to 5' large round boulders, tightly packed at 5'	

GLADSTONE RIVER PROJECT
 Sampling Results

Trench	Pan Sample Results	Sluice Box Sample	Sluice Box Results
1	black sand, garnets, fine gold		
2	black sand, coarse garnets (1/4"), fine gold black sand, garnets, gold to 1/16" ?		
3	black sand, garnets, fine gold		
4	black sand, garnets, fine gold		
5	black sand, garnets, fine gold		
6		25 yards	black sand, garnets, fine gold, bead gold 8.75 gms. gold recovered \$3.54 /cu. yard
7	black sand, garnets, fine gold		
8	black sand, garnets, fine gold		

GLADSTONE RIVER PROJECT
 Sampling Results

Trench	Pan Sample Results	Sluice Box Sample	Sluice Box Results
9		20 yards	black sand, garnets, fine gold, bead gold, small nuggets 13.75 gms. recovered \$6.95/cu. yard
10		20 yards	black sand, garnets, gold 6.2 gms. recovered
11	black sand, garnets, fine gold		
12	black sand, garnets, fine gold		
13	black sand, garnets, fine gold		
14	fine gold, 1 small nugget per pan, 1/16"-3/32"	20 yards	12.5 gms. recovered \$6.32 /cu. yard
15	black sand, garnets, fine gold		
16	black sand, no colors		
17	black sand, garnets, fine gold		

GLADSTONE RIVER PROJECT
Sampling Results

Trench	Pan Sample Results	Sluice Box Sample	Sluice Box Results
--------	--------------------	-------------------	--------------------

18	black sand, garnets, fine gold
----	--------------------------------

Gladstone River Project
 Trenching Report for Lower Claims (P32543 - P32545)

Test (no.)	Depth (ft.)	Volume (cu. yds.)	Gold Rec'd (gm)	Value/yard (@\$350U.S./oz.)	Trench Description	Cleanup Description
1	10	6	1.3	\$2.19	Silt, sand and gravel to 5' water table removed large boulders, rocks at 10', stopped work	black sand, fine gold few flakes thin flat gold
2	10	8	1.57	\$1.98	Surface silt and sand to 4' removed large boulders, rocks at 10' stopped work	black sand, garnets, fine gold
3	7	6	1.05	\$1.77	cat trench	black sand, garnets, fine gold few flakes thin gold
4	8	8	1.63	\$2.06	river washed gravels to 8' sampled	black sand, garnets, fine gold few flakes thin gold
5	7				cat trench in flood plain - pan sampled	black sand, garnets, fine gold
6	6				cat trench in old waterway, heavy water flow in gravels - pan sampled	black sand, garnets, no gold
7	7				cat trench at base of slope, south side of valley below pup - 60' by 18' - pan sampled	black sand, garnets, fine gold
8	7				centre of valley, black loam to 6' removed 1' of gravel pan sampled	black sand, garnets, no gold