

Sparkling Minerals (map attached).

Machinery was used to test up the
 place properties. Drushing, test holes,
 a small test box, - panning was done by
 hand. No - name creek appears to have ^{good} placer
 gold. Although perhaps not enough to warrant
 a large operation it would most likely
 support a small family operation.

Maxamed left limit of Kirkman
 Creek showed excellent test results and we feel
 we could successfully mine this area, again
 on a small operation set-up.

46 P24932
47 P24933
48 P24934
49 P24935
50 P24936
51 P24937
52 P24938

10'

12
YB31474 DRY 3
P37499

PL 8666
3000
1 MILE
SULU 1 P37340

NEAR

24	YB31486	23	YB31485	SOAK	17	YB31473
26		25	YB31487	WE 5	31	
28	YB31488			WE 4	38	YB40050
				WE 3	39	YB40049
				WE 2	33	
				WE 1	34	YB40052
54	P37630	YB31490	27	YB31489	40	YB40051
P37629	53	30			35	NEAR
52	P37628		29	YB31491	36	YB40054
51	P37627	YB31492			37	YB40053
50	P37626				38	YB40055
49	P37625				39	
48	P37624				40	
47	P37623					
46	P37622					
45	P37621					
44	P37620					
43	P37619					
42	P37618					
41	P37617					
40	P37616					
39	P37615					
38	P37614					
37	P37613					
36	P37612					
35	P37611					
34	P37610					
33	P37609					
32	P37608					
31	P37607					
30	P37606					
29	P37605					
28	P37604					
27	P37603					
26	P37602					
25	P37601					
24	P37600					
23	P37599					
22	P37598					
21	P37597					
20	P37596					
19	P37595					
18	P37594					
17	P37593					
16	P37592					
15	P37591					
14	P37590					
13	P37589					
12	P37588					
11	P37587					
10	P37586					
9	P37585					
8	P37584					
7	P37583					
6	P37582					
5	P37581					
4	P37580					
3	P37579					
2	P37578					
1	P37577					

2500
Creek

Touleary

115 J-14

Work Sites

DISTRICT 1
YUKON

GENERAL
JISC

May 9 Downriver to Ballarat.

A 6:30 AM start from Whitehorse with both Caley's crew and Sparkling Minerals crew. At Minto Resorts I met our crew of helpers - Stanley, Roy, George & Norman.

Once at Ballarat, getting to camp was super easy compared to last year. The glaciers are not so huge. It is interesting that the last 10 miles to Ballarat down the Yukon River are relatively free from ice at their banks.

At camp, the evening was spent getting everything liveable.

May 10 Campwork / hardtrenching

Brian and I had to get the water running properly. I kept the rest of our crew busy collecting things needed for the project. A rocker box was (pre-fab) built in Vancouver and needed to be completed. About 4:00 pm the crew and I took off to the

returned 0.925 oz/T Au. We dug a 20m trench, but could not get through the talus. I believe the hillside is a remnant of a slide.

White quartz boulders ~~are~~ are exposed along the hillside and a trench cut across them. They were surface rocks only.

I took 4 samples (1620-1631) of quartz vein, all with sulfide (except 1620). The quartz was very vuggy.

Sulfides present were galena and pyrrhotite.

We started trenching in 3 other spots but none were any different than the mother trench.

11
The mobile radio is not working so we can't raise the chopper. However, on the SBX, the people at McCabe Creek (Kruze) could hear us, and they ordered a chopper for tomorrow morning.

Stan and I received all the gear. I took Brian up to the Near 11/12 posts #2 and started him staking. He had Roy and George with him. They staked Near 31-40.

We will have to sling our gear over tomorrow. The plan is to start on Blueberry Creek for 10 days then move to Lulu Gulch. Hopefully the chopper can land near where we plan to camp. Holes will be placed near the posts 1, Viv 1 and at posts Jan 7.

May 12

The helicopter arrived late morning. It took four trips to get the crew and gear to Blueberry. There is a lot more snow than last year and the weather at night is a lot colder.

We get camp roughly set up so that I took a crew upstream from the pits on B-by. at 5:00pm. We worked on two pits, location unknown at this point. Around 10:30 we crossed the creek (north side) and started a third pit a little further upstream. All pits are on the insides of a meander. The two pits on the south side are a foot deep in frozen organics. The north side pit is frozen gravel just under the white curiboo moss.

May 13. Very disappointed at how Brian's shift did. They hit fines on top of frozen organics and didn't get down 4 inches over the 5 hours there. They just sat around instead of collecting wood.

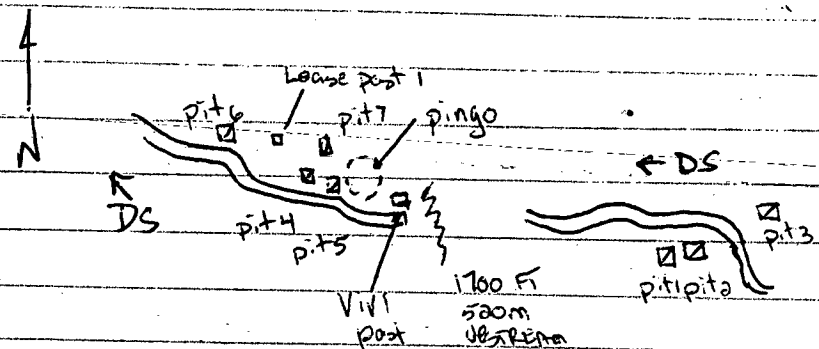
The shafts are slow going. The two on the north side have 2 feet or more of frozen organics. The south shaft had gravel for .40 m then went into organics. Beneath the organics was more gravel and then a really fine textured, thawed, dry clay? Like fuller earth. I put down that shaft another foot, so depth is now 21 inches pit 3 (+6 inches moss), 26 inches pit 2 (+2 inches moss) and 25 inches pit 1 (+7 inches moss). The 3 pits are located 526 m upstream from the Viv 1 post.

I flagged out two more shafts below the old pits on Blueberry to catch the influence of a left limit tributary. I also started a shaft about 50 m downstream of post 2 April 1 claim. This shaft is in thawed ground for ~40 m, composed of quartzite gravels.

May 14. Hit from organics on the uphill side of shaft on April 1 claim. Also started another shaft further north of the creek than the two below the old pits (pingo? - spring coming from about 10 m above creek.)

The upstream shafts went slowly today as we only had one burn due to intense digging downstream. Into sand and gravels on the two pits above, and into a frozen boulder patch on pit 1 (furthest south of creek, on north facing slope). This shaft is also flooding at a fast rate. The pit 3 (north, upstream) is curious because you go through about 1.5 m sand & gravels then hit from moss. I will pan these gravels tomorrow. Maybe we can rock some material through.

May 15 Sketch of the shafts being sunk on Blueberry.

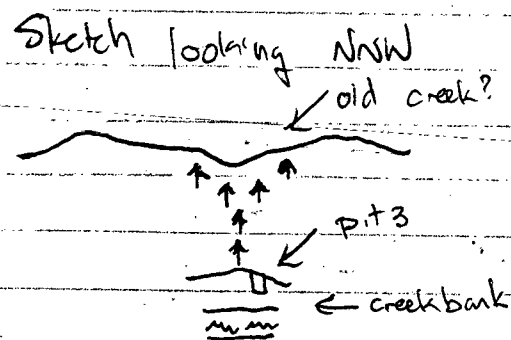


Pit 1 abandoned due to flooding. Managed to get down to 1.7 m., then slowed down by a boulder layer. The seepage

outpaced excavation at this point. The water has sat 2 days and nearly filled the pit, so it might be worth bailing and try to get down. (doubt it).

Pit 2 is the best pit. It is located 4.5m from the stream on the inside of a meander. Today I went through sandy gravels and hit a boulder patch of oblate shaped, sub rounded pebbles to boulders with washed gravels as a loose matrix (interstitial?). This shaft was down 1.5m at the end of the day and night shift has a burn to dig out. Panning the gravels shows garnets and magnetite, possibly ilmenite in the heavy fraction. Sloughing of the walls may force cribbing. Location 520m upstream of Viv 1 post

Pit 3 is on a knoll above the creek on the north side



It is about 1.4m deep and was initially thawed orange brown gravels. At the 0.9m mark, moss and roots existed until 1.25m.

Underneath these roots is a gritty grey clay. This clay has enough water content to snuff a fire, so you only get about 6 inches thaw a burn. Panning the

clay returned nothing.

Pits 4, 5, 6, 7 are all on the north side of Blueberry Creek as the south side is a steep hillside.

Pit 4 is thawed closest to the creek and frozen northerly of the creek. It is maybe 1.2m deep and is 3.5m away from the creek. Rocks (rounded) from floods are a problem in this shaft, although by retaining hit, they allow good thaw. However mucking out the shaft takes a lot of work. At the end of the day, I was maybe 30cm above creek level and water seepage was starting. I think the shaft will become unsinkable once we get below the creek, as it is within coarse, loosely packed gravels. Location 94m from Viv 1 post (downstream)

Pit 5 is completely thawed and even closer to the creek. Flooding started nearly immediately but has been kept to a slow pace. It was placed in a glacial or high water washout and is full of boulders. It is also tight to the edge of the collapsed P. 150, or possible Black Fox pit. Elevation here and at pit 6 is 675m (10m less than Viv 1 post.) Altimeter was not calibrated.

Pit 6 is on the April 1 claim, about 45m downstream from post 0. It started in Thawed gravel for 40cm then frozen organic layer and then boulders and gravel. It is still thawed and depth has not been taken. The downstream pits need to be logged. It is nearly down to creek level and may have to be abandoned as seepage has started. Four and a half metres seems to be the proper distance, but to prevent flooding (unless the fact that pit 2 is on a north facing slope has something to do with it).

Pit 7 is just started. I stripped the moss and chopped through 3 inches of organics. Brown gravel is beneath that. The pit is only 5 or 6 inches (13-15cm) at the moment, and may be left for the summer to thaw.

4/16. Shafting is going too slowly. I fired one guy today and Brian hiked down to Thistle Creek to use the phone and arrange for another crew.

Pit 2 is at 2.13m, still in boulders of Yukon Group hornblende schist. We're getting 10-20cm a fire, but only one fire a shift because nobody works but Brian and I. Pit 6 is thawed below creek level, but I left it partially dug out to go up above to pit 2. When I come back a fire was in it, so hopefully those guys dug to frost.

Pit 3 hit moss about 2m down; below the grey clay, Pit 4 was left to my crew so I don't know what is happening. Pit 7 has surface thawed around 20cm and is into grey gravels. Pit 5 is half full of water. Four 5 gallon pails of dirt were washed through the rocker box we built in Vancouver. The first two pails came from the 1.6m level and each had one speck of gold. Two more buckets were taken around the 2.1m mark and contained no gold but had many garnets and other heavy minerals.

4/17

Hit bedrock at 1.63m in pit 4. Micaceous quartz schist weathering to orange color in the creek. It is the same host rock as around the pingo. I believe it is a rim as pit 6 is down deeper and into a greyish blue clay. The rocker is being taken to those areas tomorrow.

Stripped some pits further upstream of the upper shafts. Too bad Blueberry is the creek to learn all the tricks to make it easy.

I'm going to fire the whole crew. They just stand around and watch Brian and I dig.

Will strip some more pits downstream, on the April 1 claim. Pit 7 (lease) is down nearly 30cm in 3 days thaw.

Abandoned pit 5 as water froze at lower level. Depth was approx 1.5m. Pit 1 is full to the rim and should flow over tomorrow.

down 3.4m. Water is starting to get out of hand, but it can't be abandoned now. We reeled 3 more buckets of dirt, but did not find any more gold. I'll have to recheck the 1.5m level. The bottom is very small, too small to work really. Lesson learned.

Pit 3 was dug out once and fire lit today. It was still glowing at 6:00 pm, so hopefully should have a good thaw. But if we aren't through the organics we won't get far. It is nearly 3m deep.

May - Disastrous. Cave in of pit 2. Nearly 4 feet of dirt. The shaft was just over the 3m mark and I never had a chance to log it. We spent the afternoon cribbing the hole.

Chopper is due anytime now to the 21st. If no new crew in, will go to Thistle instead of Lulu.

Pit 6 was about to have a fire lit in it, when I jumped in. We went down another 35cm. Damn those guys. I wasn't so lucky at pit 3 as I was stripping pits upstream.

Found some gold (flyshits + a coarse 3mm chunk) outta the gravels from shaft 4. Bedrock stunked us, as did repeated washes of gravels. Stockpiled 0.1m³ around hole anyway.

Reeled material from bottom of shaft 6. Had six flyspecks and a mess of concentrates. It'd be nice to get that down to bedrock. Stripped a pit at post 1. April 1 claim.

MAY 19.

Pit 2 is dug back out and down to 3m. No bedrock yet; hopefully we won't burn our cribbing. Cribbed pit 6. It is nearly 8 feet (2.4m) deep, but hit a layer of organics & clay.

Pit 3 is 2.4m and through the clay onto washed gravels. Stripped the other pits upstream of upper pits.

Helicopter should be in tomorrow. We haven't got down to bedrock, so we should come back, maybe when we do the hardback on the Vivian claims.

Might change plans & head to Thistle next in case we don't get a new crew right away. These guys are gone.

Only found one decent piece of gold on Blueberry. When Brian went down to Thistle camp they told him they just made wages at the mouth of Blueberry.

Will have to enclose photocopies of log book with this journal at the end of the season.

0.K. Where is the helicopter? It was scheduled for today. That means a split cost trip will occur tomorrow.

The crew went to sleep around 1:00pm today, so Brian and I finished off the pits. We hit a bedrock rim on the north face of pit 3. The edges of outcrop are rounded and to the south is gravels \therefore must be at edge of paleo stream. Depth of bedrock was 2.8m. Total depth of shaft is 3m. No time to get to frost is light a fire.

Pit 2 is down to 3.4m and we are still into stream gravels. There are three levels of stream in this pit. The middle level and lower level showed traces of gold.

Pit 4 below had the coarse chunk of gold and flyshits in the dump pile, but taking a bucket of gravels and then bedrock showed nothing. Bedrock changes downstream to a phyllite here, amphibolite or hornblende above.

Pit 6 is into organics still. A day of Thawing got us nowhere, so we lit a fire in it. Hopefully the cribbing won't all burn up and the pit will hold for a return visit. Should dig a hole further north of the creek and possibly hit a bench.

Tomorrow we go to Pluistle Creek. I want to place sheets right near the start of the lease and strip pits upstream before it forks.

May 81 Just started raking through gravels from bottom of pit 3 when chopper flew over.
Summary of Blueberry.

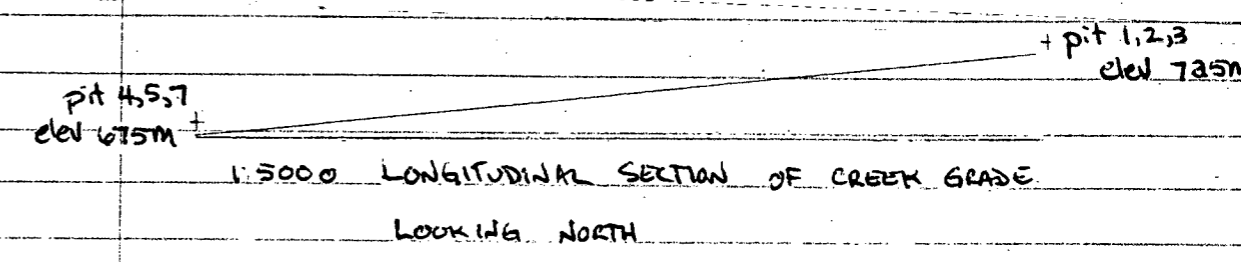
Lease of 2 miles.

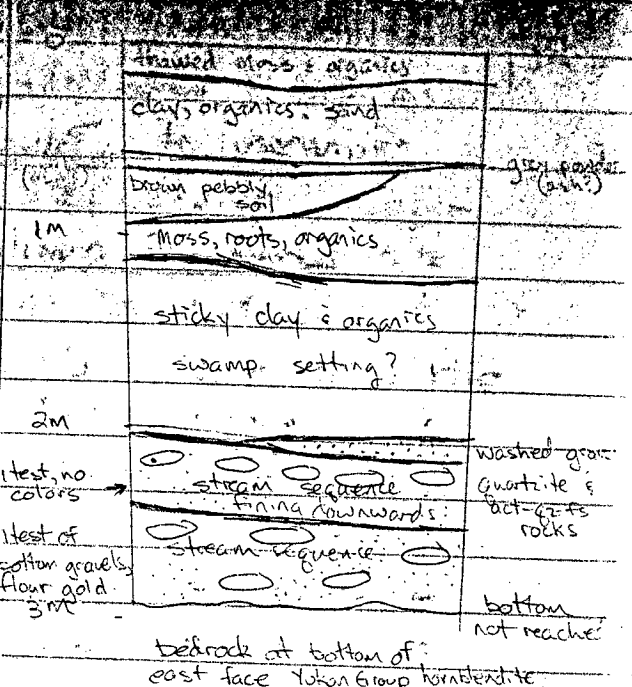
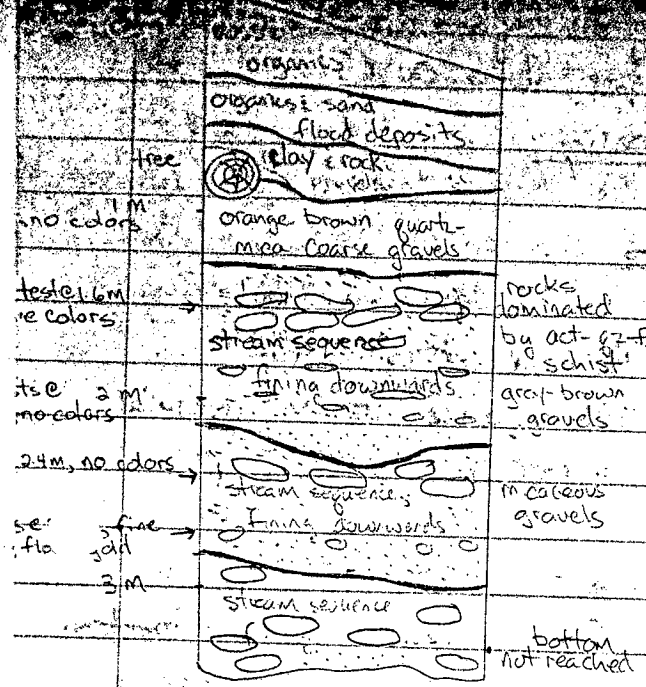
$L \times W \times D$

pit 1	1.5 x 1.5 x 1 m ³	flooded at 1m depth
2	1.6 x 1.7 x 3.4 m ³	3 rd sequence frozen gravels
3	1.6 x 2.0 x 3.0 m ³	bedrock in NW corner
4	1.5 x 1.8 x 1.9 m ³	bedrock at 1.5m
5	1.4 x 1.8 x 1.6 m ³	flood then froze at bottom.
6		

April claim

pit 6	1.6 x 1.8 x 2.4 m ³	flood depos. & organics from 1.8m onwards.
-------	--------------------------------	--



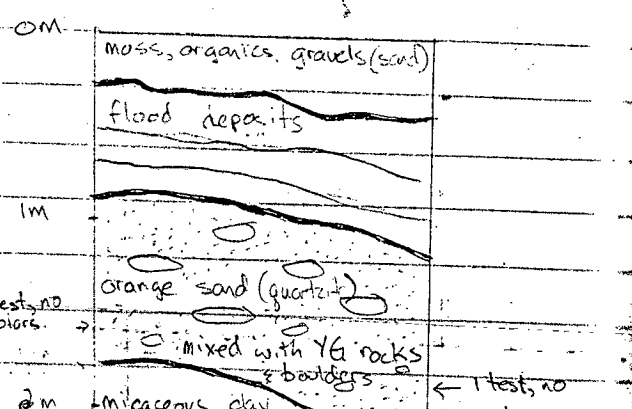
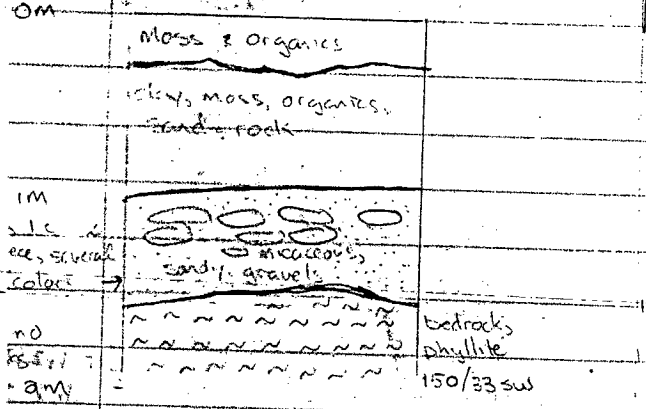


stockpiled 2.8-3.4m gravels
 concentrates taken from 2.3-2.8m level

bedrock at bottom of
 east face Yukon Group hornblende
 000/40N
 stockpiled 2.4-3.0m gravels

PITH LOG OF EAST FACE
 LOOKING UPSTREAM

PIT 6 LOG OF EAST FACE
 LOOKING UPSTREAM



stockpiled 0.1m³ gravels
 & 0.1m³ bedrock

bottom not reached

May 22 Spent the day portaging our stuff to near our claims. Backbreaking packing 2 miles upstream as was dropped off on 21st at P6157. Weed claim starts at end of P6176.

May 23 Dead tired from hiking. Walked up lease to 1/2 mile point and stripped a pit on the north slope as trees were best there. Will still need to transport wood a fair ways. Made pit visible from air and took it down 3 inches to frozen soil (gravels?). Will check on it in a couple of days, once we get a rifle up here.

Started another pit at an unknown location, again on the north side. It is on the edge of a slump or soil-flocted slope, about 10 feet from Thistle Creek. Rock was hit near the surface, but the ground is semi-thawed and picking is easier. Had no measuring tools today. Sited another two spots but too worn out to ever strip them. One is at post 1 lease, other is just downstream, along creek edge. The three pits recorded last year appear to be only one now. It must have been dug in winter as the area is all swamp. Lotsa luck for us to not get flooded.

May 24 Intense heat in the day helps make this an extremely dry valley. And a wind is always blowing, usually downstream direction. Tried a fire today in pit 3 (190m upstream post 1 placer lease Thistle). Very dangerous. It can easily get away, so do fires unwatched I guess.

Down just over 1 metre by pick & shovel in pit 4.

Pit 2 was stripped (twice). Once up high, ^{it was} easy going. The black muck only seems semi-frozen. However we would have to go 10 feet just to get to creek level. So we found a site alongside the creek. But it is frozen bloody hard. Probably because a glacier just left it.

Pit 1 is downstream from lease post 1, ∴ on weed claim some distance. It too is right on the bank & very frozen.

We are going to have to make one more portage, so tomorrow may be a short day.

The rocks in the creek are unlike anything on Ballarat. I'll have to take a good look when I have some spare time (Hah)

May 25 Very windy all day. Cloudy this afternoon, so feel a storm is coming.

Waked down to P6157 this morning to get gas for chainsaw & other gear.

Got a 12:30pm start on Pit 1. Took the frozen cap off (from the glacier) and no sooner got thru 1m of organics to hit thawed gravels and the creek. Three & 1/2 hrs. wasted. Pit flooded.

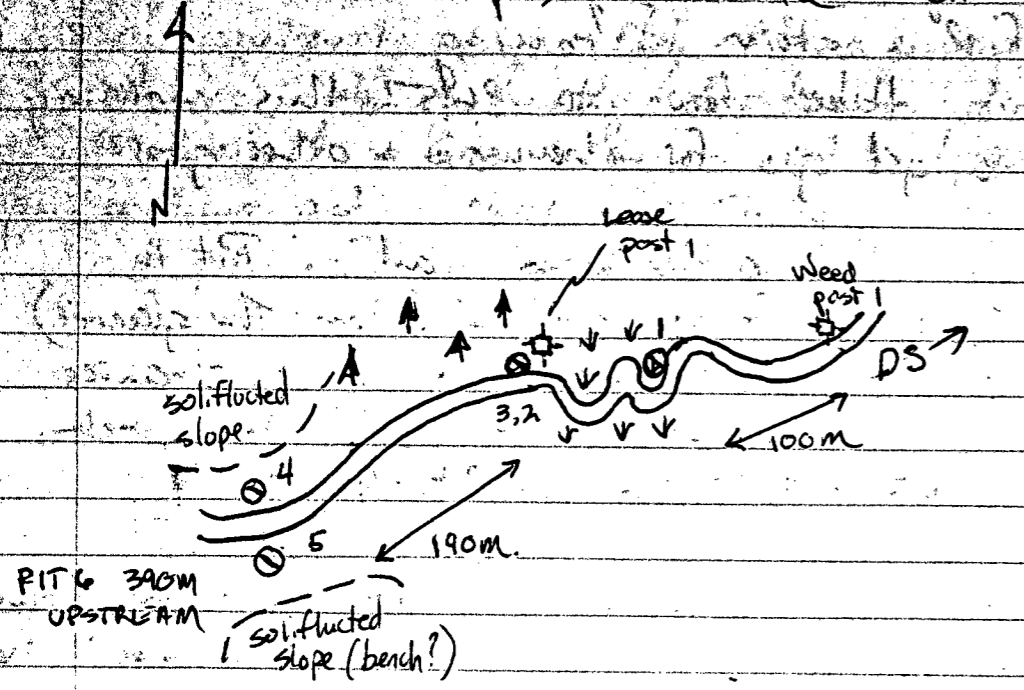
Looking at pit 2 seems similar, however we are just down to creek level (.6m) and are still in very frozen (cement) quartz rich gravels. A pan showed fine concentrates (garnet & magnetite) but no Au.

Will concentrate on Pit 4 tomorrow to get to bedrock.

Notice lease is actually located 3 claim lengths upstream from location on claim map.

1426

Sketch of pits on Thistle Creek



Pit 4 is in easy digging, but is in an actinolite schist bedrock. It was started on the a soliflucted slope and located 7m from the north creek bank. Bedrock was reached immediately below the moss on its north face, while gravels (flood?) were present for approx. 10cm depth below a 15m layer of organics & clay.

Moved across to south side ^{Thistle} creek and started pits in a willow clump, 1m from the south bank. 60cm of roots later we reached gravel of sub-angular mixed lithology. We went another 60cm through these semi-frozen gravels and have reached a thin (2cm?) layer of organic clay. Plan on stockpiling gravels below this organic layer.

The bedrock in pit 4 looks identical to the actinolite schist of the Amphibolite unit of last year. It appears to be metamorphosed diorite/gabbro. I would call it more of a gneiss as there are large boulders and fragments of quartz-feldspar ~~rock~~ bands.

We are now down to the creek level in pit 5. Hopefully we won't get flooded out in this one.

Camp is located on an elevated dune, possibly a pingo, at the end of (downstream side) a wide swampy stretch of creek, where pits 1-3 are located. It is likely related (the pingo) to the cause of the wide swamp.

May 27. Spent the whole day on pits and were down to 2.75m at shutdown. Below the thin organic/clay/sand layer (< 30cm) were partially frozen gravels identical to the cement in pit 2. Following this was an organic clay and sand layer to 1.7m depth, then orange brown coarse gravels to 2.75m depth. A layer of large boulders (creek boundary) at 2m. Several pans were taken out of these gravels. The gravels are being stockpiled from 2m onwards. Fine colors could be seen in almost all pans. Tomorrow we'll hit pay dirt.

May 28

Hiked down to P6157 to load net and haul some stuff up. At noon, pit 5 had over 1m of H₂O. Ratio of 6 buckets: 1 bucket water:dirt. Managed to scratch down to 3.23m and could not keep up with water. Of pans taken, last one had several colors. We will pan lots tomorrow.

Gravels appeared unchanged, altho bottom was never seen unwashed due to inflow.

The upstream side at the 2.9m mark is extremely leaky.

Hiked to pit 6, located 580m from base post 1. Took it down to hard ground & will pick at it tomorrow. Hopefully we'll get down

May 29

Panned gravels from pits.

2/7 pans of near-bottom gravels (2.8-3m) had chunky gold, less than 2mm in size.

Pans of gravels from 2.7m-3.2m carried specks of gold.

Pans of very last buckets taken from the shaft contained chunky gold < 2mm in size and specks of gold.

Hiked the 390m upstream to pit 6 and took it down to 0.5m, and hit frozen rock & dirt.

up camp to move tomorrow.

11/20 Helicopter in @ 10:00 am with extra man, Kola Trypus. Buzz over to Agate and set up camp at 1.8 km from lease post 1.

Hike down to near the mouth of Agate and found six shafts on the north side of the creek (claim P13176), with old windlasses outside 2 pits. Plus a 16 foot ladder leaning against a tree. West to the north is a cat road and large area (x 50 x 100m) stripped, but overgrown by new moss and scrub brush. This is located 280m downstream from our lease.

The creek stays tight against the south slope most of the route upstream except in a couple of spots with large meanders. We can shaft on the south side at these points.

Approx 800m upstream of post 1, the ground flattens as you climb to a plateau and enter Agate valley. Below this point, the north slope is very gentle as you open into the McCreae/Agate confluence zone.

The plateau/valley boundary corresponds to the last large tributary entering Agate Ck from the north on our lease (going downstream from headwaters). Good possibilities of bench ground up there.

Found two shafts on our lease, at 100m and 275m from lease post 1. May possibly be assessment work from claims past and not be very deep.

Last year noted 2 foot posts etched with NGS. 1-7. Found no. 2 / no. 3 this time and they are 800m (1/2 mile) apart. Still no idea as to what they may be.

Sited several shaft locations and will decide on best ones tomorrow. Did not go upstream yet.

Summary of Thistle Creek.

Lease of 1 mile

	L x W x D	
pit 2	0.4 x 2 x 1 m ³	frozen gravel along creek bank
pit 3	1.4 x 1.9 x .5 m ³	semi frozen organics
pit 4	1.4 x 2.17 x 1.7 m ³	bedrock @ 0.75m Yukon Group gneiss-schist
pit 5	1.4 x 1.85 x 3.2 m ³	flooded at 3.2m, gravels @ 2.0m. on carry gold.
pit 6	1.8 x 1.8 x .5 m ³	frozen rock/soil.

Need claim

pit 1	1.6 x 2 x 1 m ³	flooded @ .5m below creek level.
-------	----------------------------	----------------------------------

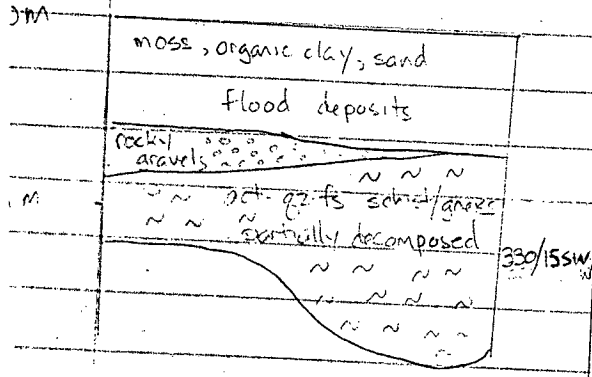
Pit 4 elev 1046m Pit 5 elev 1030m Pit 3 elev 1000m

1:5000 LONGITUDINAL PROFILE OF THISTLE CREEK
LOOKING NORTH

SCALE: 1:400

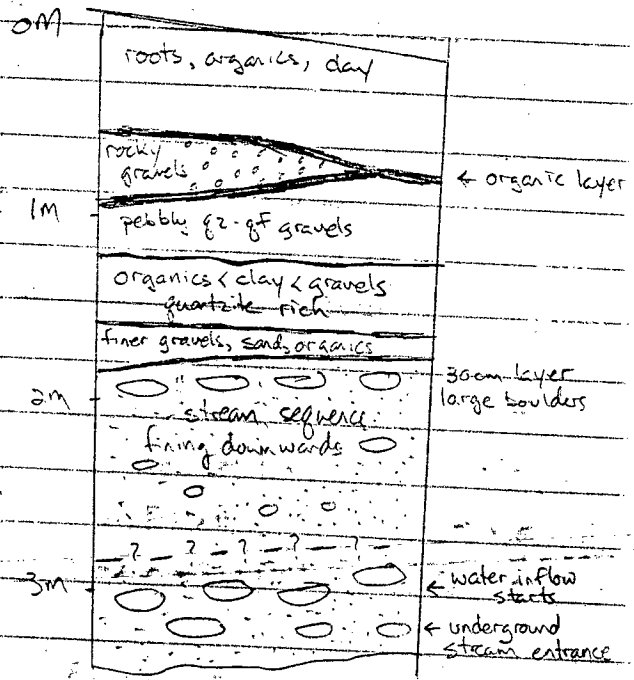
PIT 4 LOG OF SOUTH FACE

← DOWNSTREAM



PIT 5 LOG OF NORTH FACE

DOWNSTREAM →



Panned lower gravels, most pans showed flour gold & several colors.

May 31

Hiked down to area of first shaft found an lease and started shaft on the inside of a meander against the south slope. It appears a slide has come down and pushed out the creek.

We've gone 1m in this pit and we still in frozen organics. We stripped another pit across the creek, and have found flood gravels and frozen organics.

If a mudslide had dammed the creek, the original channel may be south of the present creek, or far up the shallow north slope (possible bench?) depending on the volume of the slide; perhaps both pits are in the same material.

Plan on digging full day tomorrow and doing some exploration in the evening.

June 1

Too tired to explore after day. Poured rain all nite, and most of day. Pit 1 we are down 1.3m and still into frozen organics. Picked away until 3:00 pm then moved upstream. Hiked up the hillside above pit 1 and confirmed suspicion of soliflucted slope, so organics may be very thick.

Didn't measure distance to second

June 4
Now named
Pit 1A

pit stripped down to frozen gravels located on the north slope above a part of glaciated Agate Ch. Hiked up north slope over crest of hill to look at a clearing done by a bulldozer. Most likely same people as mentioned on the 30th May. No gravels were seen atop in the clearing.

Planning on stripping one more pit just upstream of the major draw showing on the claim map around the one mile mark. Still haven't gone upstream.

in 2 Kola shot a bear last nite. We found him (the bear) this evening and finished it off. He'll have to buy it before it starts to rot. Good thing the weather has been cooperating.

Late start as of last nites antics. Stripped a pit below camp ^(Above post 1) (1675m) and had fairly easy digging in dry packed red yellow sand below the moss and thin layer of organics. Pit 4 is located on north side Agate Ch, 7m from the creek.

The creek is at least 1m below the banks everywhere, with the lower distances to waterline containing swamp. Spotting shaft locations near the creek is difficult.

All low vegetation is black spruce and buck brush (very little small willows also).

Moss is relatively shallow and covers up to (at least) 5 feet (1.5m) of organics. This last ref. is regards pit (which we abandoned) (sol. flattened slope). Tried a fire in it and managed to sort of square up the hole, but depth was maybe 15cm & 45cm water.

Stripped another pit approx. 180m upstream of the many times aforementioned north draw. Pit 3 is located on a flat terrace(?) on the south edge of Agate creek bank. Digging in coarse sand below < 20 cm moss & organics.

Got 20cm thaw in pit stripped yesterday (pit 3). Into a mix of organic clay and gravels.

Will explore lake tomorrow for sure, and probably locate pits upstream.

13. Measured distances to pits from post 1 today. Worked all day on lowermost pit. Have gone through 1.0m of organics, sand and clay. Hiked up to take this evening. Cold. No other pings. No outcroppings seen. Spotted an upstream shaft location.

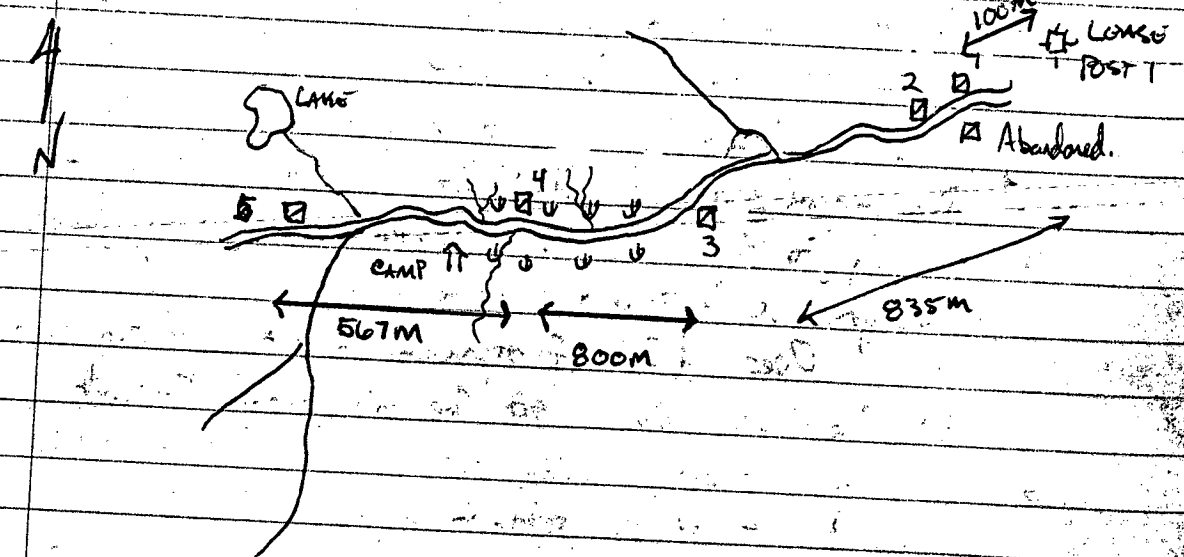
14. Hiked down to pit 1 and worked on it all day. Down to 1.8m at shutdown. Still in organics, and hit a layer of trees at 1.5m. This may mark the original organic layer, as it appears we have dug through the soliflucted south slope. ∴ Azak Creek was dammed and had to cut a new channel (its present one).

15. Fired Kola today. Brian and I hiked down to pit 1 and dug all day. Forgot the measuring tape, so could not do a log. Became excited around a layer of rock approx. 2m depth, but medium-coarse gravels contained interstitial organics. Also at this level we hit more trees (from mud slide?) sand then into sand & clay. Area is all swampy and pit is constantly wet. Bear is starting to smell & a lot of flies in the area. We made Kola cover it with moss.

Rocks seen in the pit were subrounded quartz, quartz feldspathic and quartz chlorite schists. Gravel was mostly quartz grains with rock fragments (and heavy concentrates seen with one specimen - garnet, Fe Oxide).

June Dug all day in pit 3, located 190m upstream of the ^{lower} lease tributary, 835m from lease post 1. Have gone 1.3m through repeating flood gravel/sands organic clays and roots. Frozed all the way. This is a disappointing creek. Thunderstorm this eve.

Sketch of pits on Azak Creek



m7 Cold & wet. Poured rain all afternoon & evening.
 Still into organics, sand, roots at 2.4 m depth.
 Pit 1 measures $1.9 \times 2.1 \text{ m}^2$. Stripped pits
 upstream 200m of lease pit 1. Found etched posts
 and 4 on way back to camp. Everything is soaked,
 we are camped in a swamp.

JB Still raining. Everything is wet including tent. Can't
 light a fire, no dry wood, no enthusiasm. Call day
 on account of weather.

9. Still pouring rain. Snow on ground in morning.
 Trail (lease line) is a creek. Over 1m water in pit 1.
 At end of day hit a cement-like layer of grey
 gravel with rock chips - still in it at 3m, (2.9-3.0m)
 hit it down. Just before the gravel had another
 layer of trees or roots, so may still be in the slide.
 Disappointing creek. Below pit 1 where I thought about
 digging (to avoid solidified slope) is running water
 through a swamp.

Over 9 feet of organics in pit 1, frozen solid
 all the way down, so the only way through is
 to pick & shovel. Walls are solidly frozen and cave-in
 should not be a problem.

AGATE CREEK

Jun 10. A break in the weather allows us to dig out.
 Travelled to pit 3 and dug until 3:00 pm.
 Down to 1.5 m depth in the center. Walls
 are difficult to square because of large boulders
 and cobbles frozen in place. Tree roots, 10cm in
 diameter are being dug at 1.5m in the SE
 corner.

Mucked out pit 4 to 4m depth, down
 to frozen ^{black} organics and ice lenses.
 Returned early to camp and prepared for
 demob. to (Dawson) Ballvat.

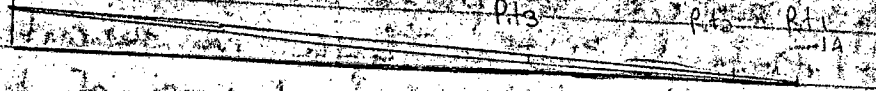
Jun 11 Helicopter in @ 9:00am and out to Ballvat then to
 Dawson. Record Digger 1 and Weed 1 placer claims
 on Thistle Creek as well as Near 31-40 hardrock
 claims.

SUMMARY OF AGATE CREEK

Lease of 3 miles

$L \times W \times D$

pit 1A	$1.8 \times 1.6 \times 1.7 \text{ m}^3$	frozen organics / slide (mud)
pit 1	$1.8 \times 1.7 \times 3.0 \text{ m}^3$	flood gravels / 2.8m organics - trees
pit 2	$1.7 \times 1.7 \times .5 \text{ m}^3$	clay and organics
pit 3	$2.0 \times 2.0 \times 1.5 \text{ m}^3$	tree roots / flood gravels
pit 4	$1.8 \times 1.7 \times .4 \text{ m}^3$	clay and organics
pit 5	$2.0 \times 2.0 \times$ stripped	of moss to black organics

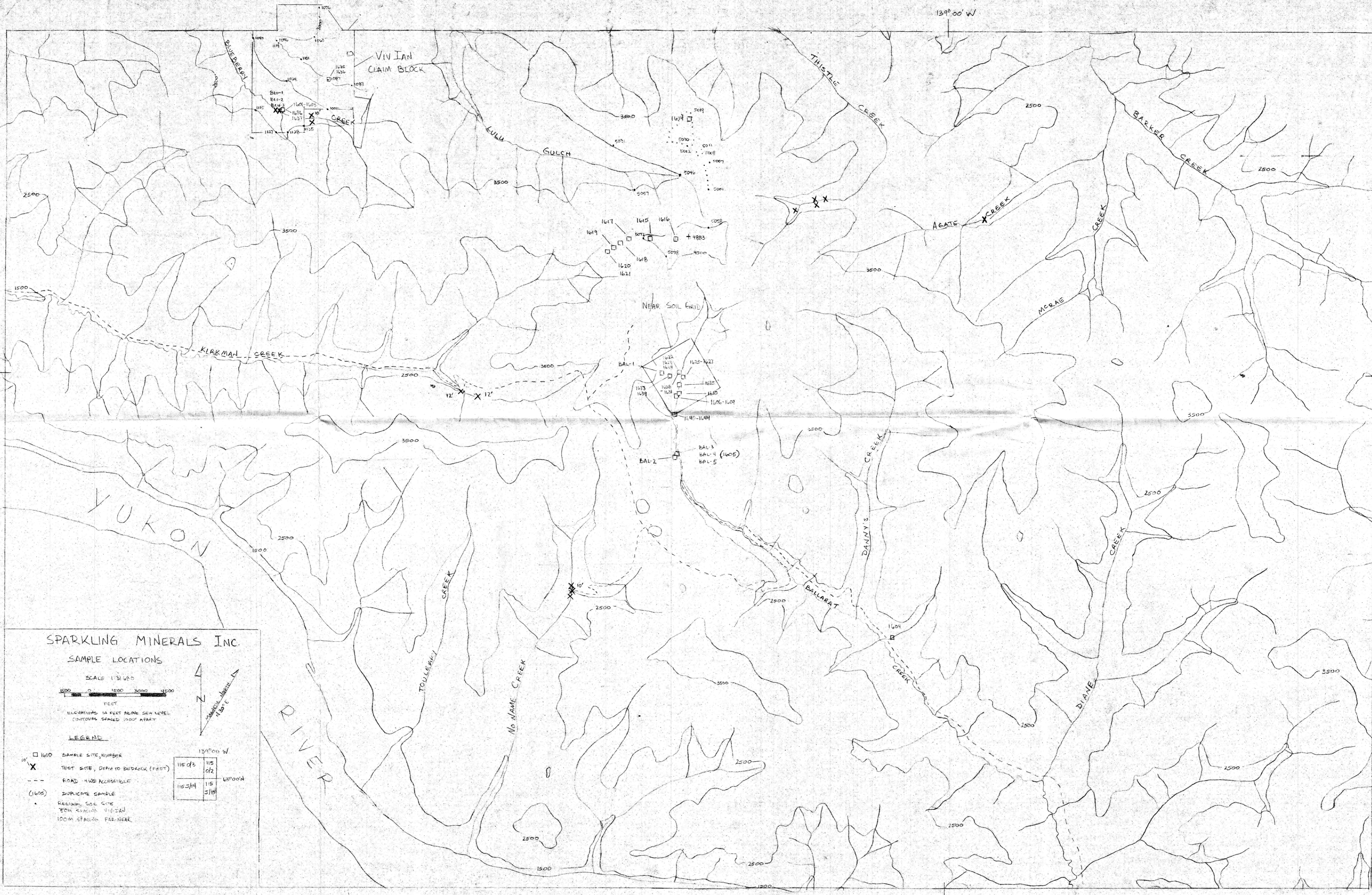


Longitudinal profile of Agate Creek, looking northwest

Written log of north face of pit 1 - Agate Creek

- 0- 0.4m moss
- .4- 0.9m organics interlayered with orange brown sand & flood deposits
- 0.9- 1.4m flood deposits interlayered with grey clays
- 1.4- 1.5 m trees, roots
- 1.5 - 1.8 m flood gravels, clay, moss, organics interlayered
- 1.8 - 1.9 m trees, roots
- 1.9- 2.4 m grey green gravels, clay & organics
- 2.3- 2.4m boulders
- 2.4- 2.5m trees, organics
- 2.5- 2.8 m fine sand, clay and roots
- 2.8- 3.0 m frozen gravels, coarse rock fragments, roots

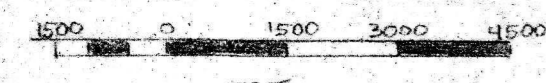
in SW corner



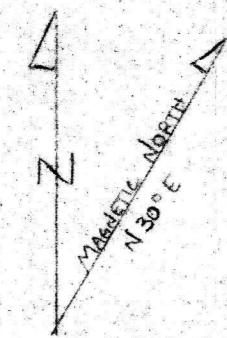
SPARKLING MINERALS INC.

SAMPLE LOCATIONS

SCALE 1:31,600



ELEVATIONS IN FEET ABOVE SEA LEVEL
CONTOURS SPACED 1000' APART



LEGEND

- 1610 SAMPLE SITE, NUMBER
- X TEST SITE, DEPTH TO BEDROCK (FEET)
- ROAD - 4WD ACCESSIBLE
- (1605) DUPLICATE SAMPLE
- REGIONAL SOIL SITE FROM RESURVEY VIVIAN 100M SPACING, FAR-NEAR

	139° 00' W	
115013		115012
115014		115015
	63° 00' N	

139° 00' W

63° 00' N

139° 00' W