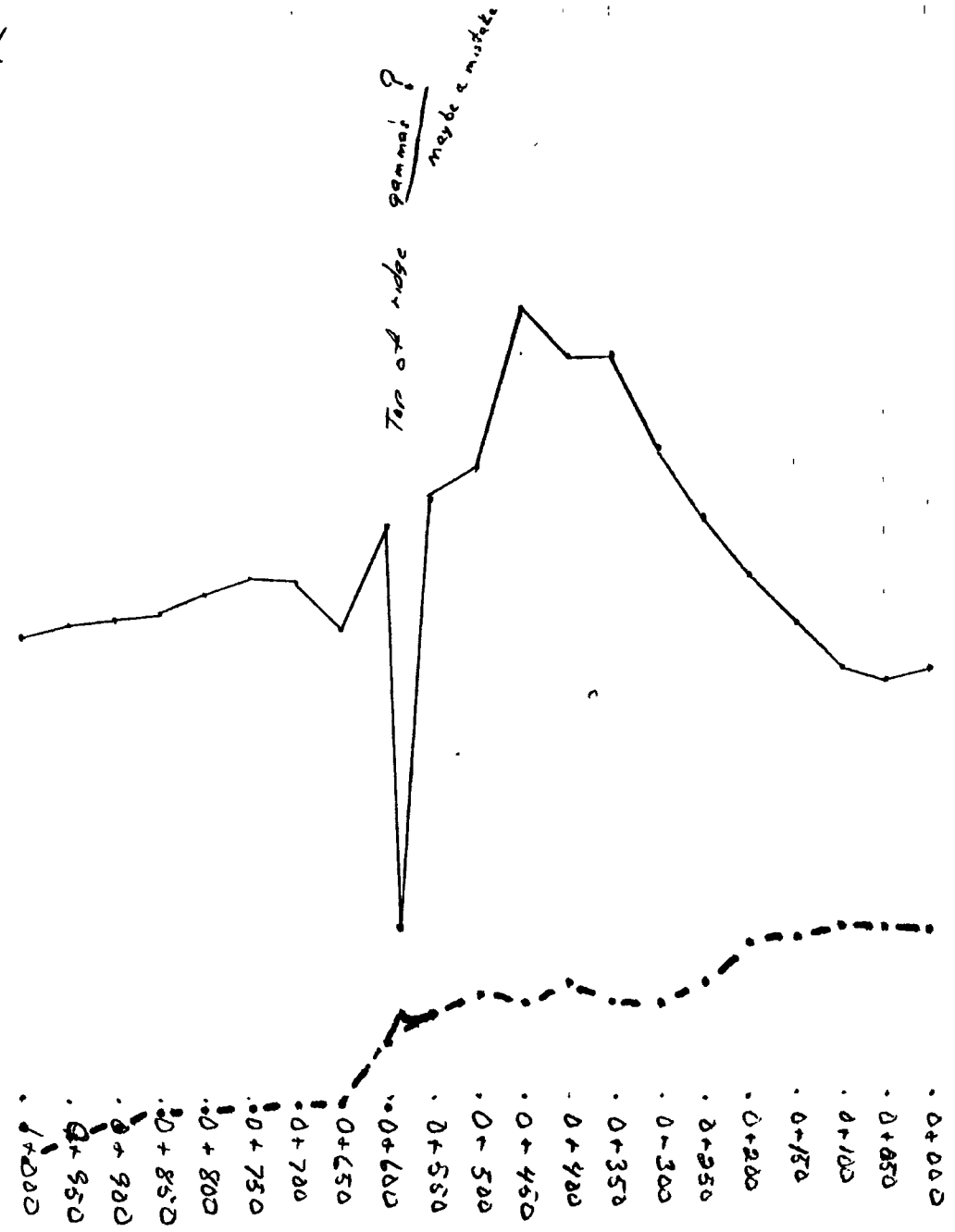


9400
9300
9200
9100
9000
8900
8800
8700
8600
8500
8400
8300
8200
8100
8000
7900
7800
7700
7600
7500
7400
7300
7200
7100
7000

Line K

Top of ridge
gamma?
maybe a mistake



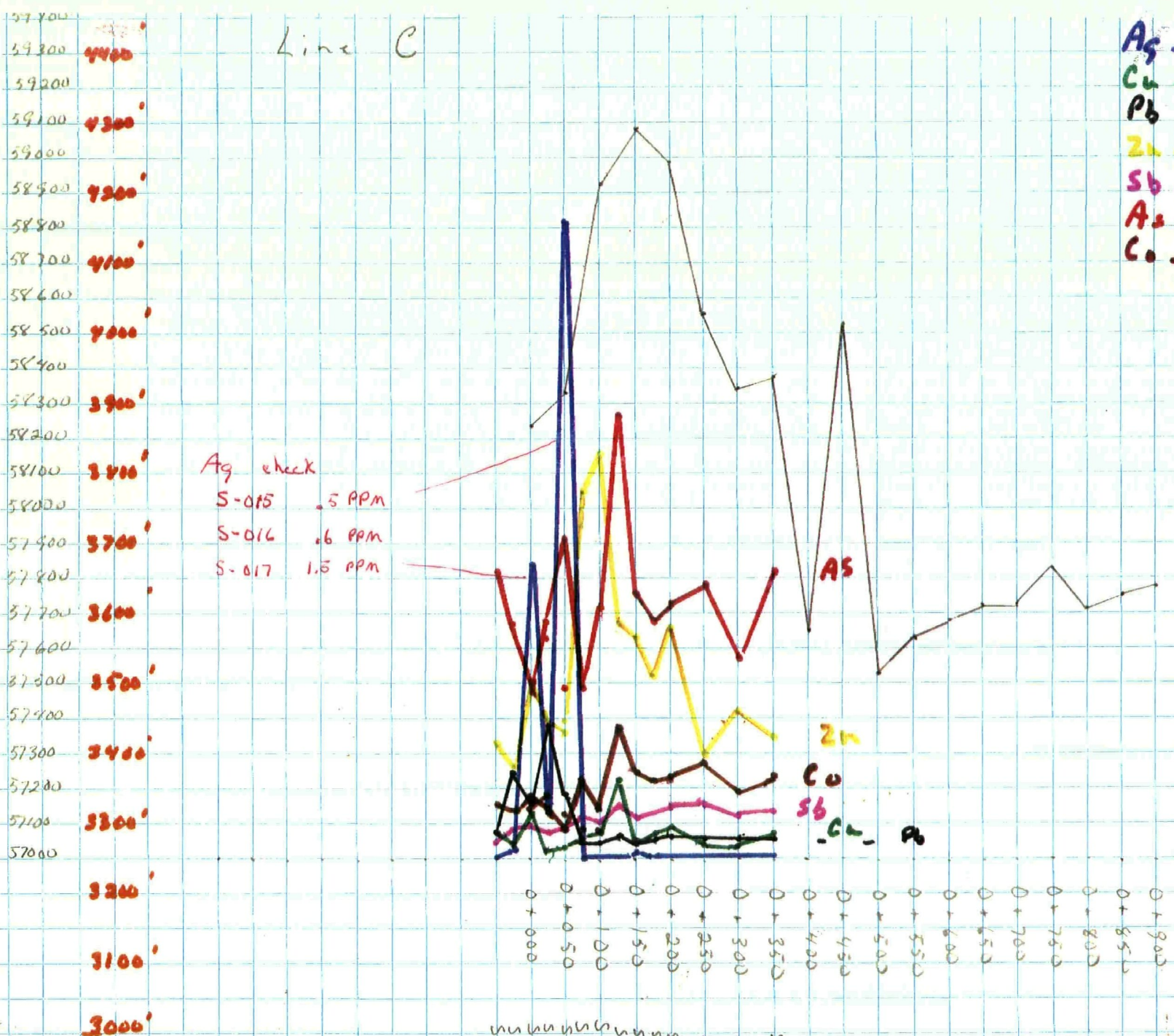
gamma s

du.

7600'
7500'
7400'
7300'
7200'
7100'
7000'

Line C

Ag	230 PPM
Cu	220 PPM
Pb	210 PPM
Zn	200 PPM
Sb	190 PPM
As	180 PPM
Co	170 PPM
	160 PPM
	150 PPM
	140 PPM
	130 PPM
	120 PPM
	110 PPM
	100 PPM
	90 PPM
	80 PPM
	70 PPM
	60 PPM
	50 PPM
	40 PPM
	30 PPM
	20 PPM
	10 PPM
	< 0.1 PPM



Ag check
 S-015 .5 PPM
 S-016 .6 PPM
 S-017 1.5 PPM

AS

gamma

Zn

Co

Sb

Cu

Ag

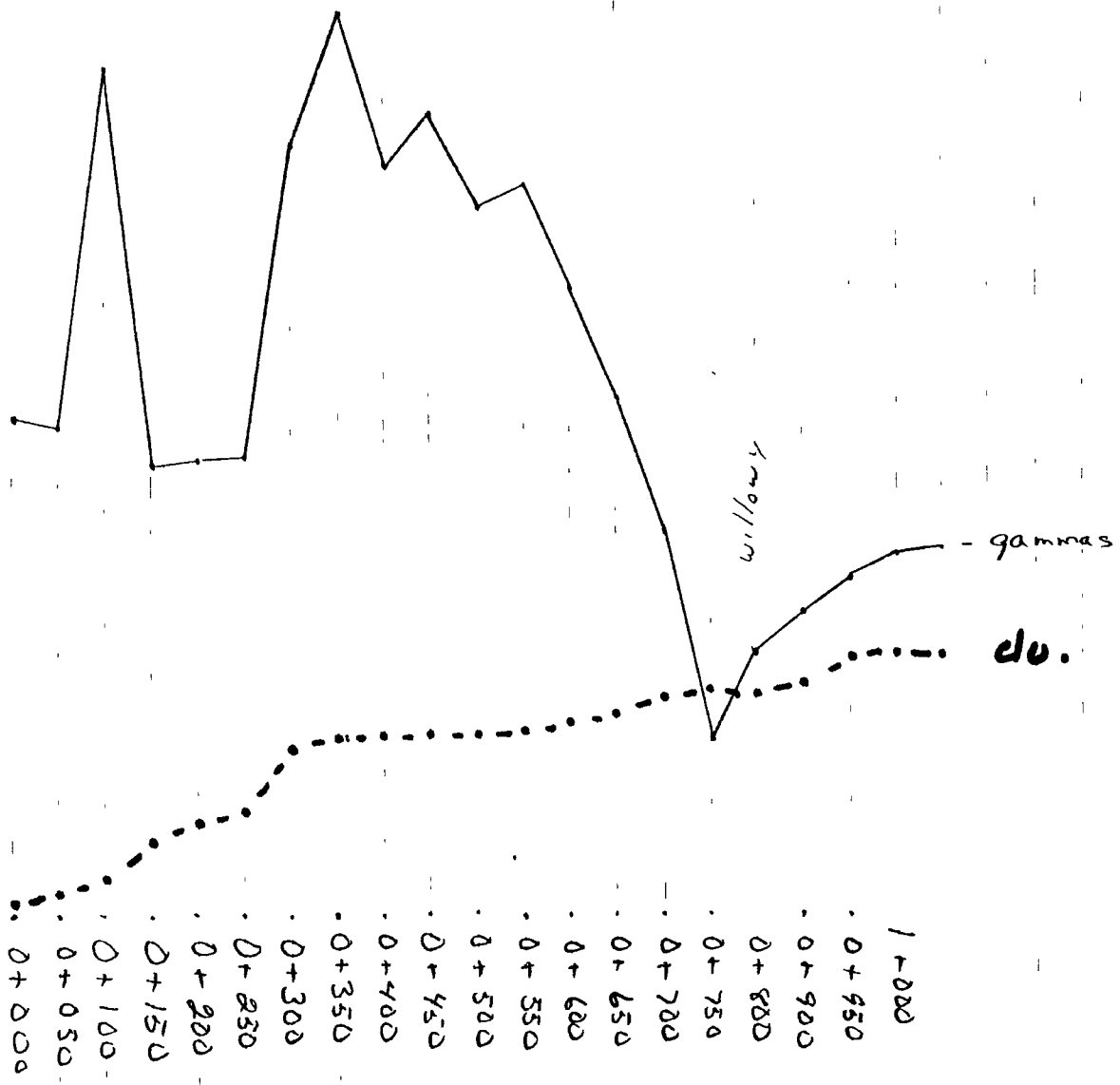
As

S-023
 S-022
 S-021
 S-020
 S-019
 S-018
 S-017
 S-016
 S-015
 S-014
 S-013
 S-012
 S-011
 S-010
 S-009
 S-008
 S-007
 S-006
 S-005
 S-004
 S-003
 S-002
 S-001

Magnetometer
 MP-2 Magnetometer Precession (Sintrex)

59400
 59300
 59200
 59100
 59000
 58900
 58800
 58700
 58600
 58500
 58400
 58300
 58200
 58100
 58000
 57900
 57800
 57700
 57600
 57500
 57400
 57300
 57200
 57100
 57000

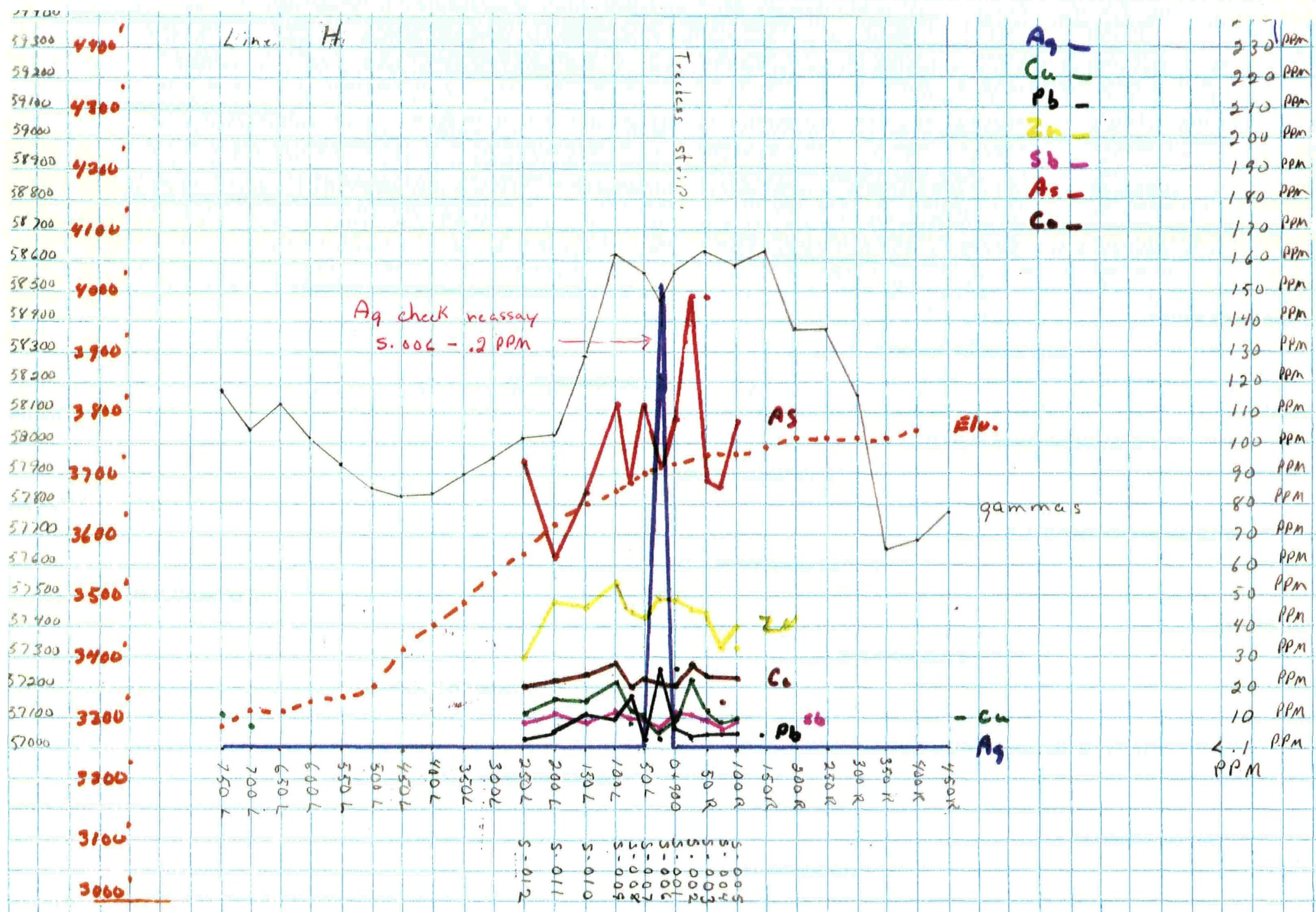
Line F



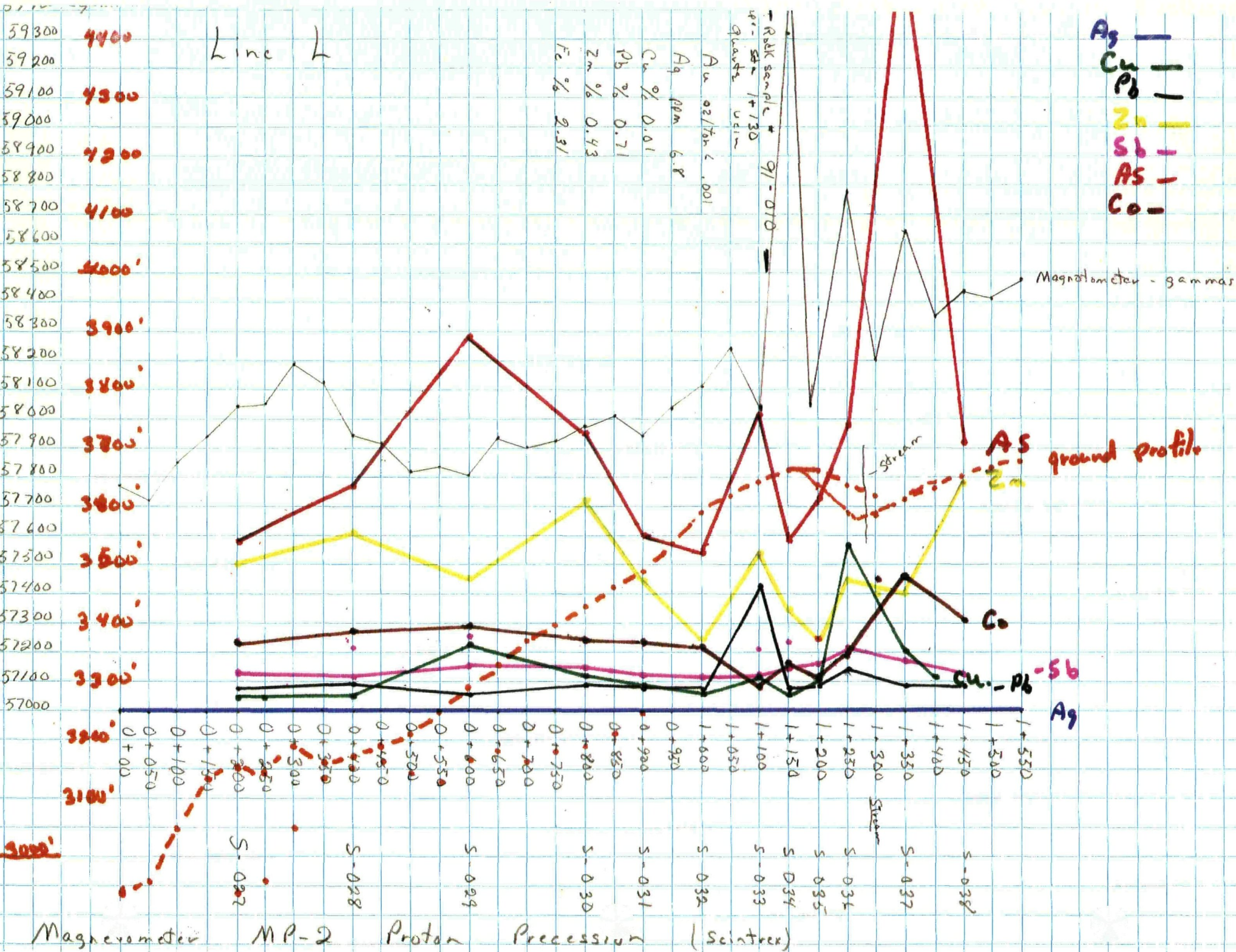
3600'
 3500'
 3400'
 3300'
 3200'

- gamma
 do.

willow



Magnet eter - MP-2 Proton Precession (scintrex)



59300 4400

59200

59100 4300

59000

58900 4200

58800

58700 4100

58600

58500 4000'

58400

58300 3900'

58200

58100 3800'

58000

57900 3700'

57800

57700 3600'

57600

57500 3500'

57400

57300 3400'

57200

57100 3300'

57000

3200'

3100'

3000'

Line L

Au 02/70h < .001
 Ag ppm 6.8
 Cu % 0.01
 Pb % 0.71
 Zn % 0.43
 Fe % 2.31

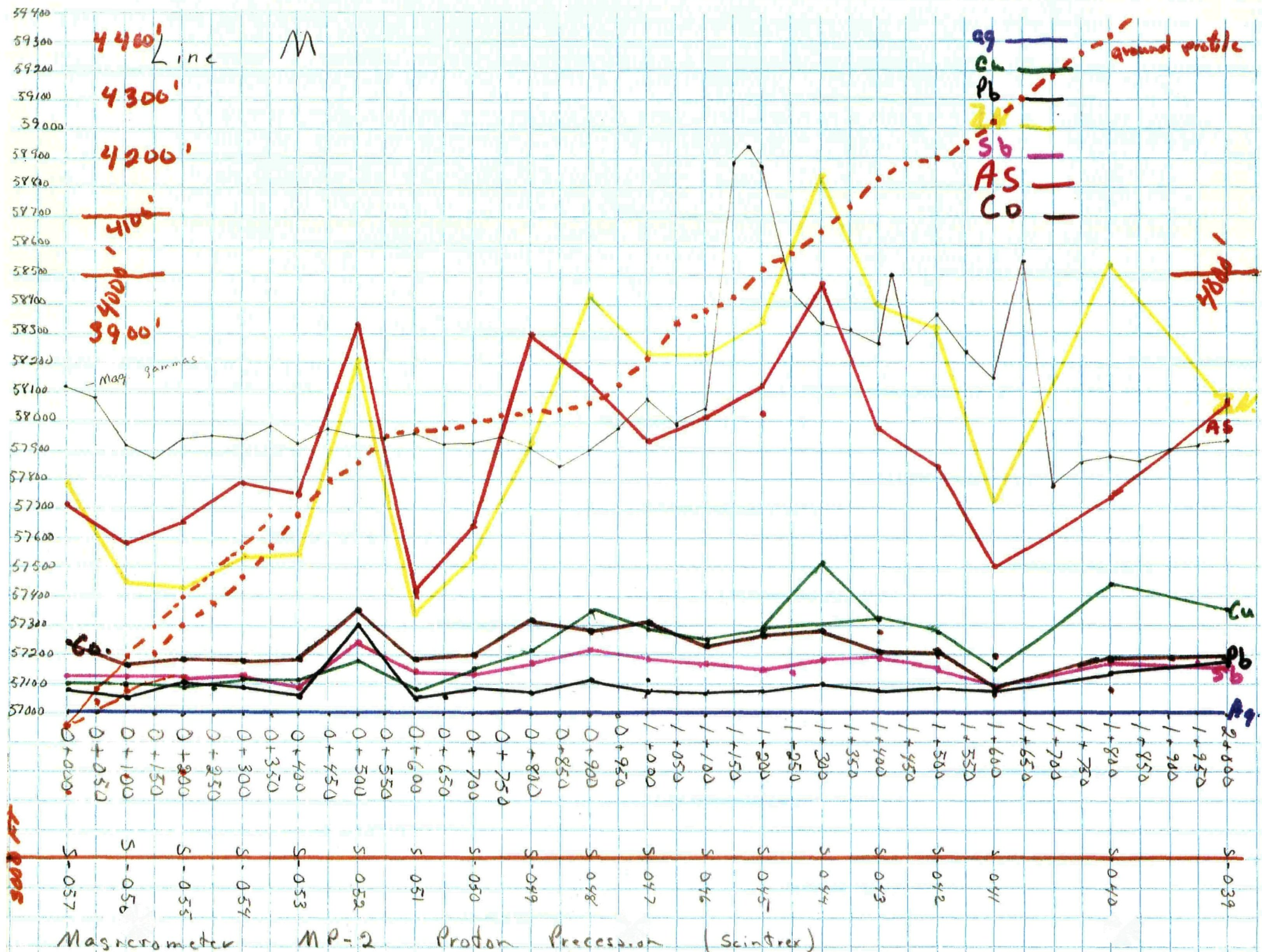
Rock sample # 91-010
 4" - 5" x 1" x 1/30
 Quartz vein

- Ag -
- Cu -
- Pb -
- Zn -
- Sb -
- AS -
- Co -

0+00
 0+050
 0+100
 0+150
 0+200
 0+250
 0+300
 0+350
 0+400
 0+450
 0+500
 0+550
 0+600
 0+650
 0+700
 0+750
 0+800
 0+850
 0+900
 0+950
 1+000
 1+050
 1+100
 1+150
 1+200
 1+250
 1+300
 1+350
 1+400
 1+450
 1+500
 1+550

S-027
 S-028
 S-029
 S-030
 S-031
 S-032
 S-033
 S-034
 S-035
 S-036
 S-037
 S-038

Magnetometer MP-2 Proton Precession (Scintrex)



Map 105-C-14

B

Line O
1200
0+000

1+850

Line M
1100

Sidney

Creek

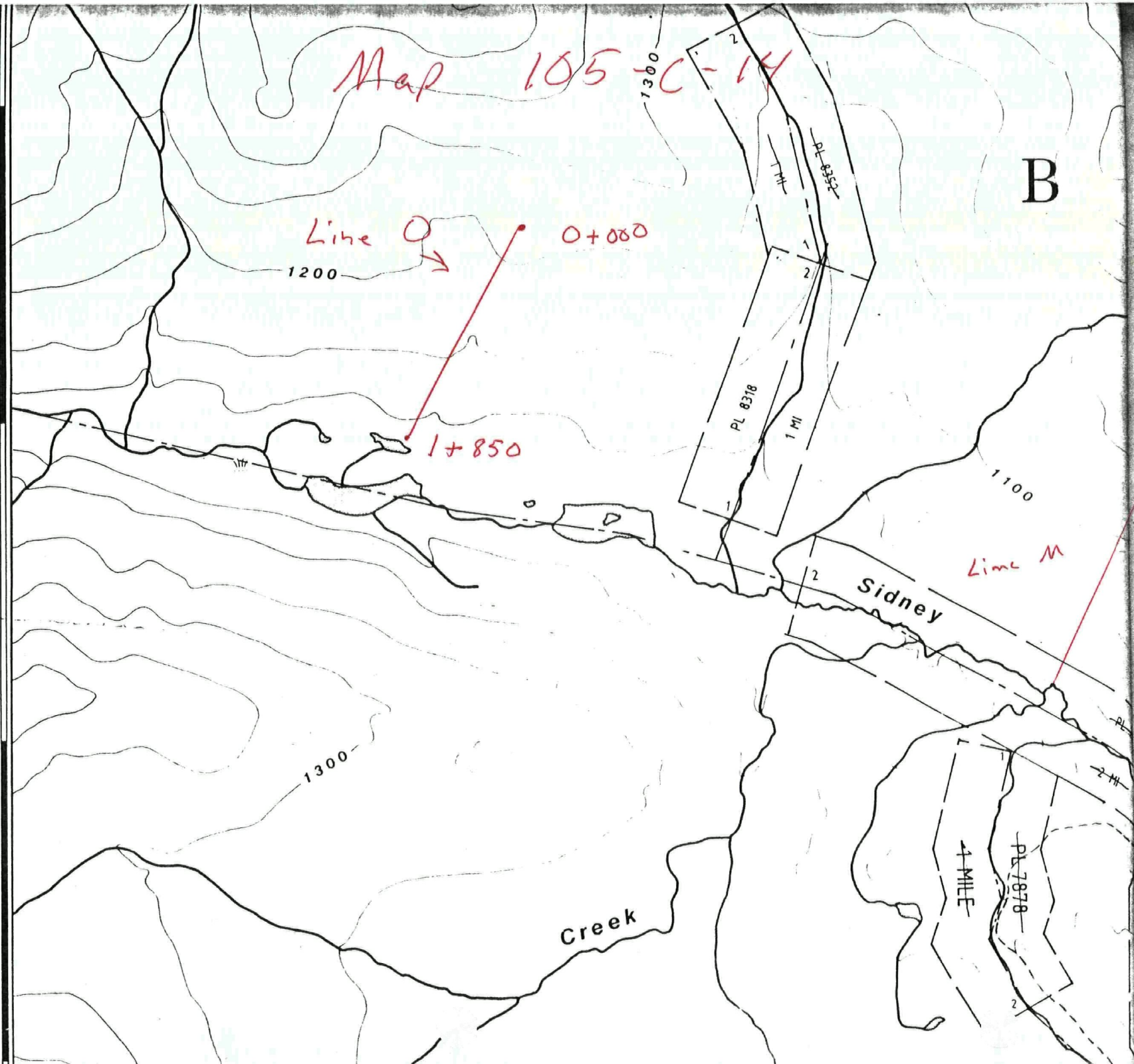
PL 8378

1 MI

4 MILE

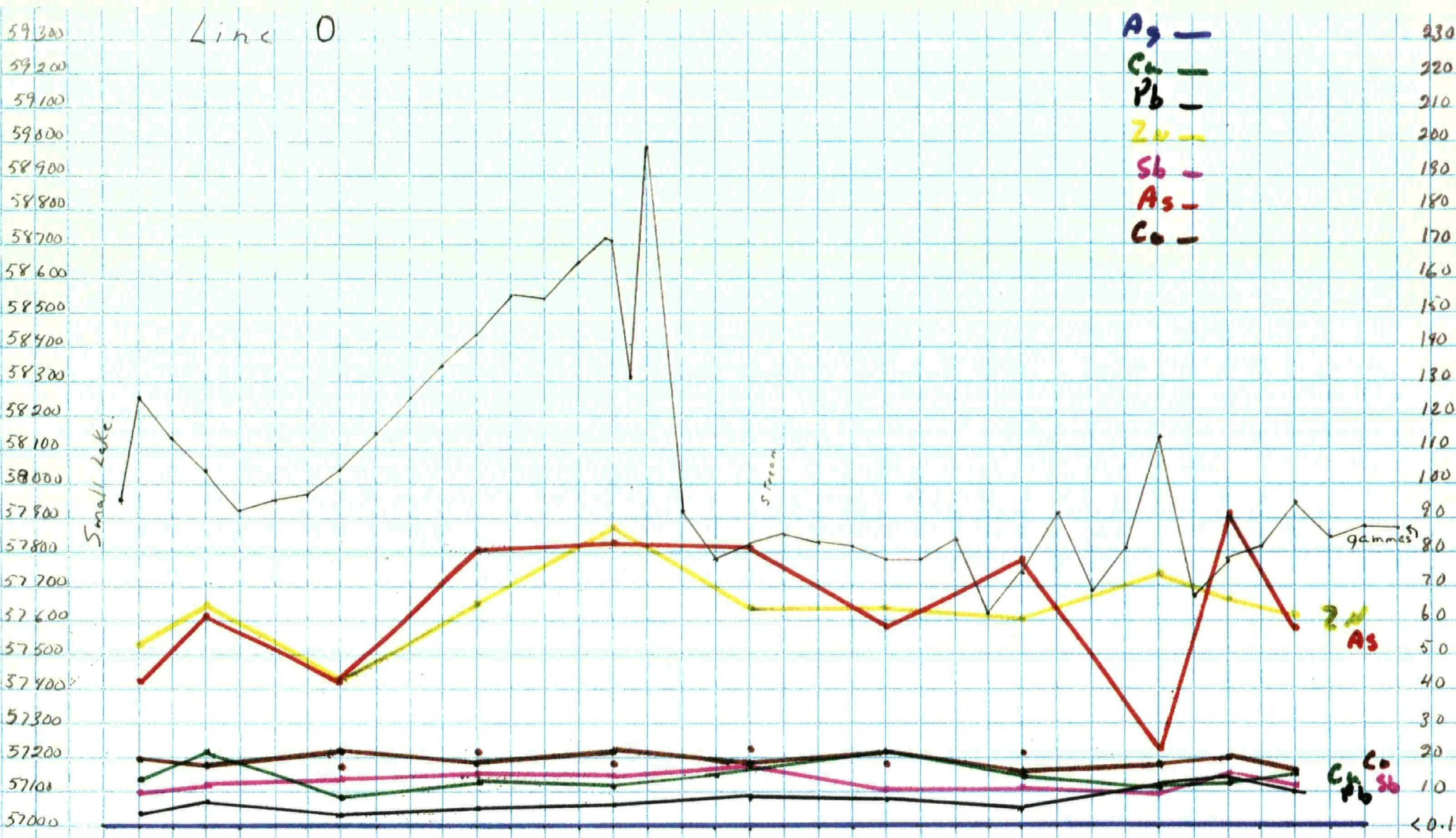
PL 7878

2 MI



Line 0

Ag — 230
 Cd — 220
 Pb — 210
 Zn — 200
 Sb — 190
 As — 180
 Co — 170



Zn
 As
 Cd
 Co
 Sb

Mag. tometer
 MP-2
 Proton
 Precession
 (Cintura)
 S-068
 S-067
 S-066
 S-065
 S-064
 S-063
 S-062
 S-061
 S-060
 S-059
 S-0

<0.1 PPM

August 14, 1991

Work Order # 13314

Rob Hamel

File # 13314d

Assay Certificate For Samples Provided

Sample #	Au ppb	Ag ppm	Cu ppm	Pb ppm	Zn %	Fe%
91-018	29	0.3	87	3	0.016	4.76
91-019	29	0.1	160	7	0.008	5.41
91-020	52	0.1	52	6	<0.001	1.91
S-006	32	152.0	----	--	-----	-----
S-015	111	179.2	----	--	-----	-----
S-016	20	12.9	----	--	-----	-----
S-017	20	81.6	----	--	-----	-----
S-018	41	2.1	----	-	-----	-----

Certified by Chyzolki



July 31, 1991

Work Order # 13282

Rob Hamel

Assay Certificate For Samples Provided

Sample #	Ag ppm	Cu ppm	Pb ppm	Zn ppm	Sb ppm	Mo ppm	As ppm	Cr ppm	Co ppm	Ni ppm
S-001	<0.1	10	8	48	12	<1	109	35	21	<1
S-002	<0.1	23	4	46	11	<1	149	48	28	<1
S-003	<0.1	12	5	45	9	<1	87	29	24	<1
S-004	<0.1	9	5	33	6	<1	85	19	16	<1
S-005	<0.1	10	5	40	10	<1	108	25	23	<1
S-006	*153.9	5	26	49	5	<1	93	17	21	<1
S-007	<0.1	11	6	43	9	<1	112	26	23	<1
S-008	<0.1	13	17	45	10	<1	87	31	20	<1
S-009	<0.1	21	10	54	12	<1	112	26	28	<1
S-010	<0.1	15	11	47	9	<1	84	23	24	<1
S-011	<0.1	16	5	49	12	<1	62	23	22	<1
S-012	<0.1	11	3	30	9	<1	94	21	20	<1
S-013	<0.1	7	6	116	10	<1	73	25	16	<1
S-014	<0.1	5	6	106	11	<1	48	26	23	<1
S-015	*183.7	4	19	36	9	<1	91	20	7	<1
S-016	*14.1	3	38	37	7	<1	69	16	12	<1
S-017	*84.6	13	15	50	10	<1	49	27	18	<1
S-018	2.3	4	25	25	8	<1	63	18	14	<1
S-019	<0.1	8	7	33	6	<1	81	24	16	<1
S-020	<0.1	23	7	68	16	<1	128	54	37	<1
S-021	0.2	5	5	64	11	<1	76	29	25	<1
S-022	0.1	7	7	52	15	<1	69	27	22	<1
S-023	<0.1	9	7	67	15	<1	73	28	23	<1
S-024	<0.1	4	6	30	12	<1	79	28	28	<1
S-025	<0.1	3	5	42	13	<1	57	22	19	<1
S-026	<0.1	7	6	35	16	.1	82	29	24	<1
S-027	<0.1	4	7	50	14	<1	59	20	23	<1
S-028	<0.1	4	9	61	12	<1	77	22	27	<1
S-029	<0.1	23	6	46	16	1	139	41	29	<1
S-030	<0.1	11	9	73	15	<1	96	33	25	<1

Certified by Chyokki



July 31, 1991

Work Order # 13282

Rob Hamel

Assay Certificate For Samples Provided

Sample #	Ag ppm	Cu ppm	Pb ppm	Zn ppm	Sb ppm	Mo ppm	As ppm	Cr ppm	Co ppm	Ni ppm
S-031	<0.1	9	9	45	13	<1	60	32	25	<1
S-032	<0.1	6	7	25	11	<1	54	38	23	<1
S-033	<0.1	11	43	54	11	<1	101	63	9	<1
S-034	<0.1	5	7	35	13	<1	59	49	16	<1
S-035	<0.1	10	9	26	16	<1	73	29	11	<1
S-036	<0.1	57	15	44	21	<1	98	130	18	<1
S-037	<0.1	20	9	40	17	<1	306	110	44	<1
S-038	<0.1	11	8	79	12	<1	92	29	31	<1
S-039	<0.1	36	17	106	16	<1	107	42	19	<1
S-040	<0.1	44	14	154	17	<1	74	44	19	<1
S-041	<0.1	15	7	73	9	<1	50	23	8	<1
S-042	<0.1	28	9	132	15	<1	85	46	20	<1
S-043	<0.1	31	8	140	19	<1	98	50	21	<1
S-044	<0.1	52	10	184	19	<1	148	60	29	<1
S-045	<0.1	29	8	136	15	<1	113	83	28	<1
S-046	<0.1	26	7	124	18	<1	101	137	24	<1
S-047	<0.1	29	7	123	19	<1	94	128	31	<1
S-048	<0.1	35	11	143	22	<1	115	99	29	<1
S-049	<0.1	21	7	91	17	<1	130	124	31	<1
S-050	<0.1	16	8	53	15	<1	64	34	20	<1
S-051	<0.1	7	6	35	15	<1	41	26	19	<1
S-052	<0.1	17	30	121	24	<1	133	77	35	<1
S-053	<0.1	11	5	55	9	<1	75	41	19	<1
S-054	<0.1	11	9	53	12	<1	78	29	18	<1
S-055	<0.1	9	10	43	11	<1	66	28	19	<1
S-056	<0.1	10	5	46	12	<1	59	35	17	<1
S-057	<0.1	10	7	79	13	<1	71	25	24	<1
S-058	<0.1	15	10	62	11	<1	57	35	16	<1
S-059	<0.1	13	13	67	13	<1	91	36	20	<1
S-060	<0.1	11	11	74	10	<1	23	35	19	<1

Certified by _____

Chyolci



July 31, 1991

Work Order # 13282

Rob Hamel

Assay Certificate For Samples Provided

Sample #	Ag ppm	Cu ppm	Pb ppm	Zn ppm	Sb ppm	Mo ppm	As ppm	Cr ppm	Co ppm	Ni ppm
S-061	<0.1	14	5	60	11	<1	78	27	15	<1
S-062	<0.1	21	7	63	10	<1	59	30	21	<1
S-063	<0.1	14	9	64	17	<1	83	34	18	<1
S-064	<0.1	11	7	88	14	<1	84	36	23	<1
S-065	<0.1	13	6	65	14	<1	81	35	18	<1
S-066	<0.1	9	4	43	13	<1	43	27	21	<1
S-067	<0.1	21	7	65	12	<1	63	39	17	<1
S-068	<0.1	14	4	53	10	<1	42	33	20	<1

Certified by Chycki



July 31, 1991

Work Order # 13282

Rob Havel

Corrected

Assay Certificate For Samples Provided

Sample #	Ag ppm	Cu ppm	Pb ppm	Zn ppm	Sb ppm	Mo ppm	As ppm	Cr ppm	Co ppm	Mn ppm
S-001	<0.1	10	8	48	12	<1	109	35	21	1
S-002	0.1	23	4	46	11	1	149	46	29	<1
S-003	<0.1	12	5	45	9	<1	97	29	24	1
S-004	<0.1	9	5	33	6	<1	85	19	16	<1
S-005	<0.1	10	5	40	10	1	108	25	23	1
S-006	✓ 0.2	5	28	49	5	<1	93	17	21	<1
S-007	<0.1	11	6	43	9	<1	112	26	23	<1
S-008	<0.1	13	17	45	10	<1	87	31	20	<1
S-009	0.1	21	10	54	12	<1	112	26	29	<1
S-010	<0.1	15	11	47	9	<1	84	23	24	1
S-011	0.1	16	5	49	12	<1	62	23	22	1
S-012	<0.1	11	3	30	9	<1	94	21	20	<1
S-013	<0.1	7	6	116	10	<1	73	25	16	<1
S-014	0.1	5	6	106	11	<1	48	26	23	<1
S-015	✓ 0.5	4	19	36	9	<1	91	20	7	<1
S-016	✓ 0.6	3	38	37	7	<1	69	16	12	<1
S-017	✓ 1.5	13	15	50	10	1	49	27	18	<1
S-018	2.3	4	25	25	8	<1	63	18	14	<1
S-019	0.1	3	7	33	5	<1	81	24	16	<1
S-020	<0.1	23	7	68	16	<1	123	54	37	<1
S-021	0.2	5	5	64	11	<1	76	29	25	<1
S-022	0.1	7	7	52	15	<1	69	27	22	<1
S-023	<0.1	3	7	47	15	<1	73	28	23	<1
S-024	<0.1	4	6	30	12	<1	72	28	28	1
S-025	<0.1	3	5	42	13	<1	57	22	19	<1
S-026	<0.1	7	6	35	16	<1	82	29	24	<1
S-027	0.1	4	7	50	14	<1	59	20	23	<1
S-028	<0.1	1	9	61	12	<1	77	22	27	<1
S-029	0.1	22	3	48	16	<1	123	41	29	1
S-030	0.1	11	9	73	15	<1	36	32	25	<1

Certified by _____



August 1, 1991

Work Order # 13282

Bob Hamel

Assay Certificate For Samples Provided

Sample #	Au oz/ton	Ag ppm	Cu [%] ppm	Pb [%] ppm	Zn [%] ppm	Fe [%] ppm
31-003	<0.001	8.0	---	---	---	---
91-010	<0.001	<u>6.8</u>	0.010	0.71	0.43	2.31

Certified by _____

Chyokki



GEOCHEMICAL ANALYSIS CERTIFICATE

Northern Analytical Labs. Ltd. File # 91-2727 Page 3
 105 Copper Road, Whitehorse YT Y1A 2Z7



SAMPLE#	Mo ppm	Cu ppm	Pb ppm	Zn ppm	Ag ppm	Ni ppm	Co ppm	Mn ppm	Fe %	As ppm	U ppm	Au ppm	Th ppm	Sr ppm	Cd ppm	Sb ppm	Bi ppm	V ppm	Ca %	P %	La ppm	Cr ppm	Mg %	Ba ppm	Ti %	B ppm	Al %	Na %	K %	W ppm	Pt** ppb
13248 91-001	1	33	6	34	.2	19	19	273	5.29	6	5	ND	1	12	.2	2	2	140	1.34	.105	2	44	.64	25	.26	2	.59	.07	.04	1	3
13248 91-002	1	15	4	113	.3	17	33	864	11.34	4	5	ND	1	135	.2	3	2	283	4.57	.586	4	8	3.27	58	.13	2	3.16	.01	.11	1	3
13248 91-003	1	3	5	87	.2	28	30	1176	11.07	2	5	ND	1	264	.2	5	2	349	7.12	.151	4	16	3.04	24	.08	2	2.90	.02	.03	1	3
13248 91-004	1	12	2	17	.1	824	46	579	2.66	5	5	ND	1	5	.2	2	2	16	.21	.002	2	536	7.48	5	.01	2	.14	.01	.01	1	7
13248 91-005	11	5371	2	24	25.1	20	7	200	2.28	3	5	2	1	47	1.7	2	9	13	.90	.009	2	135	.18	21	.01	2	.14	.01	.01	1	4
13248 91-006	4	19	641	44	2.0	268	20	257	1.92	2	5	ND	1	20	1.0	2	2	57	.66	.008	2	365	1.91	30	.05	3	1.30	.01	.13	1	3
STANDARD C/FA-10R	19	57	40	133	7.3	72	33	1055	4.00	43	18	6	40	52	18.6	16	19	56	.49	.090	39	59	.89	177	.09	34	1.90	.06	.15	12	486

ICP - .500 GRAM SAMPLE IS DIGESTED WITH 3ML 3-1-2 HCL-HNO3-H2O AT 95 DEG. C FOR ONE HOUR AND IS DILUTED TO 10 ML WITH WATER.
 THIS LEACH IS PARTIAL FOR MN FE SR CA P LA CR MG BA TI B W AND LIMITED FOR NA K AND AL. AU DETECTION LIMIT BY ICP IS 3 PPM.
 - SAMPLE TYPE: PULP PT** BY FIRE ASSAY & ANALYSIS BY ICP/GRAPHITE FURNACE.

DATE RECEIVED: JUL 22 1991 DATE REPORT MAILED: July 25/91 SIGNED BY: C. Leong D.TOYE, C.LEONG, J.WANG; CERTIFIED B.C. ASSAYERS

5371
 1, 10, 100

August 1, 1991

Work Order # 10248

Rob Name:

Assay Certificate For Samples Provided

Sample #	Au ppb
91-001	11
91-002	262
91-003	11
91-004	15
91-005	<u>3178</u>
91-006	5

Certified by Chyokli



August 14, 1991

Work Order # 13314

Rob Hamel

File # 13314c

Assay Certificate For Samples Provided

Sample	ppb Au	ppm Ag	ppm Cu	ppm Pb	ppm Zn	ppm As	ppm Sb	ppm Ni	ppm Co	ppm Cd
91-012	63	0.1	175	59	285	105	50	32	40	1
91-013	41	<0.1	265	11	96	164	36	49	35	1
91-014	35	<0.1	3	13	65	94	139	34	21	2
91-015	13	<0.1	47	10	33	55	70	12	12	1
91-016	34	<0.1	41	2	51	71	35	21	37	1
91-017	30	0.6	1744	2	44	61	32	56	31	<1

Certified by

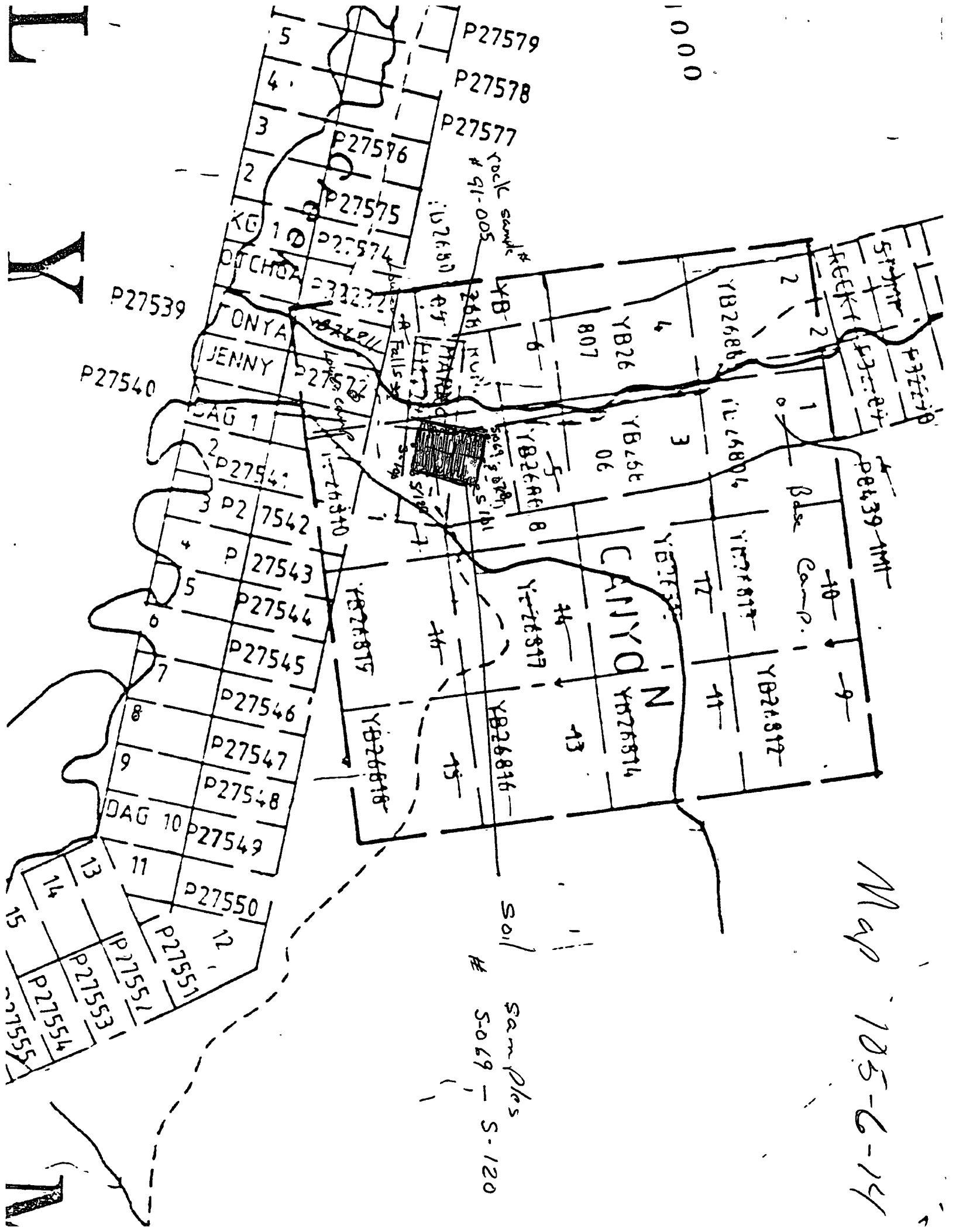
C. Hyski



TY

TI

1000



P27579
P27578
P27577
P27576
P27575
P27574

P27539
P27540

TONYA
JENNY
DAG 1
P27541
P27542
P27543
P27544
P27545
P27546
P27547
P27548
DAG 10
P27549

P27550
P27551
P27552
P27553
P27554
P27555

Rock sample # 91-005

26h KUI

A Falls

Base Camp

CANYON

Soil # S-069 - S-120

Map 105-6-14

August 12, 1991

Work Order # 13314

Rob Hamel

File # 13314a

Assay Certificate For Samples Provided
Soil samples

Sample #	Ag ppm	Cu ppm	Pb ppm
S-069	0.2	<1	6
S-070	0.3	<1	6
S-071	0.4	<1	5
S-072	0.3	<1	4
S-073	0.1	<1	5
S-074	0.3	<1	3
S-075	0.1	<1	3
S-076	<0.1	<1	2
S-077	0.7	<1	4
S-078	3.3	<1	8
S-079	1.1	<1	6
S-080	0.2	<1	8
S-081	4.5	<1	8
S-082	0.2	<1	6
S-083	0.2	<1	7
S-084	0.1	<1	6
S-085	<0.1	<1	6
S-086	<0.1	<1	4
S-087	<0.1	<1	4
S-088	0.3	1	3
S-089	0.1	9	5
S-091	<0.1	9	4
S-092	<0.1	7	5
S-093	<0.1	7	7
S-094	<0.1	6	5
S-095	<0.1	11	13
S-096	<0.1	17	15
S-097	<0.1	10	15
S-098	<0.1	18	10
S-099	<0.1	9	11

Certified by *Chyokki*



August 12, 1991

Work Order # 13314

Rob Hamel

File # 13314b

Assay Certificate For Samples Provided

Sample #	Ag ppm	Cu ppm	Zn ppm
S-100	0.3	15	14
S-101	<0.1	10	12
S-102	0.2	10	9
S-103	0.1	8	9
S-104	0.2	8	7
S-105	0.6	14	11
S-106	1:1	10	11
S-107	0.6	9	11
S-108	0.2	8	7
S-109	<0.1	5	5
S-110	<0.1	13	10
S-111	<0.1	13	9
S-112	<0.1	11	9
S-113	0.1	9	8
S-114	<0.1	11	10
S-115	<0.1	10	11
S-116	<0.1	6	9
S-117	<0.1	6	8
S-118	<0.1	8	7
S-119	1.0	6	11
S-120	<0.1	14	10

Certified by Chyokki



69 .3 <1 [4]
 70 .3 <1 [6]
 71 .4 <1 [5]
 72 .3 <1 [4]
 73 .1 <1 [5]
 74 .3 <1 [4] (100%)
 75 .1 <1 [4]
 76 .7 <1 [4]

77 33
 78 1.1
 79 .2
 80 4.5
 81 .2
 82 .2
 83 .2
 84 .1
 85
 86 .3
 87
 88
 89
 90
 91
 92
 93
 94
 95
 96
 97
 98
 99
 100 .3

101
 102
 103
 104
 105
 106
 107
 108
 109
 110
 111
 112
 113
 114
 115
 116
 117
 118
 119
 120

2n cu Zn
 12
 13
 14
 15
 16
 17
 18
 19
 20
 21
 22
 23
 24
 25
 26
 27
 28
 29
 30
 31
 32
 33
 34
 35
 36
 37
 38
 39
 40
 41
 42
 43
 44
 45
 46
 47
 48
 49
 50
 51
 52
 53
 54
 55
 56
 57
 58
 59
 60
 61
 62
 63
 64
 65
 66
 67
 68
 69
 70
 71
 72
 73
 74
 75
 76
 77
 78
 79
 80
 81
 82
 83
 84
 85
 86
 87
 88
 89
 90
 91
 92
 93
 94
 95
 96
 97
 98
 99
 100
 101
 102
 103
 104
 105
 106
 107
 108
 109
 110
 111
 112
 113
 114
 115
 116
 117
 118
 119
 120

with

Cu - red. O
 Zn □

June 30



mostly sunny, after noon
shower

We did some test panning
at different locations
in the canyon

We went down the
lower side of the trail to
about 1 mile past the
old trappers cabin

~~June~~ July 1



We walk up Iron Cr
to the top of the
second canyon

We do some test panning
there is some black sand
and some flower gold
in every pan we find
a better way to travel
back to camp

I go to Whitehorse
to pick up more supplies
I meet Leo in Whitehorse
we buy a 110 Honda
3 wheeler we camp
at Tashik overnight



July 3

We load up the Pug (4x4
ATV) and supplies fuel
etc and return to
Iron Co Camp -
mostly cloudy & windy.

Picture of Leo
standing next
our truck and load
of supplies.



start of it trail down until it
 15 in house at home we pull
 the Pag to 5 drop & vt 1+250

Km date m/s July 4 page 1

0+000	5771 58011	
0+050	58000	
0+100	57923	
0+150	57918	
0+200	57916	
0+250	57961	
0+300	57958	
0+350	57941	
0+400	57930	
0+450	57943	
0+500	57948	
0+550	57946	
0+600	57984	
0+650	58057	50
0+700	57974	50
0+750	57942	55
0+800	57943	50
0+850	58005	55 50
0+900	58000	11
1+000	58032	10 50
1+050	57933	50
1+100	57970	50 60
1+150	57962	50
1+200	57940	50 55
1+250	57912	55 50

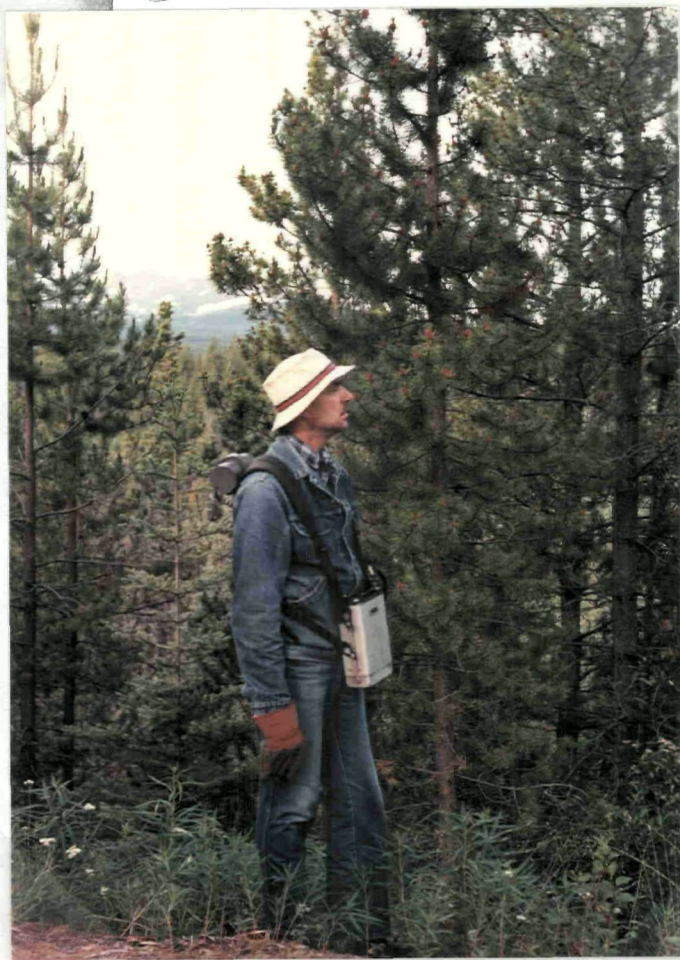
str - bar, rd v bbe -
 (5) low back 4m - PS
 vob
 U side d stem
 - stream

July 1 1961 6:00 AM ...
 Post 2 ... camp + falls ...

July 1 AM p. 2

6+000	57914	78 10	61 20	61 6	→ E
0+050	57970	61 10			
0+100	57972	60 70			! see B
0+150	57992	60 70			
0+200	57981	70 80			
0+250	57801	66 70			
0+300	57480	56 60			
0+350	58145	50 75			
0+400	58262	50-60			
0+450	58648	50 60			
0+500	58237	50-60			
0+550	58461	40-50			
0+600	58653	50			
0+650	58680	55 60			
0+700	58476	50			
0+750	58221	75 55			10ME of calc - f
0+800	58073	50-60			
0+850	57974	45-50			
0+900	57982	55-60			
0+950	57880	45 50			
1+000	57842	1 "			+
<u>1+050</u>	<u>57917</u>	<u>50-60</u>			
1+100	57938	50 55			
1+120	57913	55 60			old tv str

Km + m's			
1+200	57884	50-60	
1+250	57953	40-54	
1+300	57901	45-55	
1+350	57953	50-55	
1+400	57924	45-50	
1+450	57963	u u	
1+500	57872	45-50	
1+550	57931	45-55	
1+600	57864	50-55	Sand w/o calcu
1+650	58044	50-55	
1+700	58012	40-50	
1+750	57961	40-45	



buffalo

Leo with magnetometer

200 lbs \times 2 per place line
 cl d r cpe near #1 + of place less
 700 lbs \times 2 per place line

title July 4 4th place

KM + M's			
0+00	58240	50-55	
0+00	58335	45-55	15M u y 1 not
0+100	58317	60-80	
0+150	59076	60-70	
0+200	58717	60	
0+250	58554	4-50	
0+300	58313	50-60	10 M S / cl ^{ca} ₂₀₀
0+350	58701	45-55	
0+400	57648	6-70	
0+450	58529	55-60	
0+500	57576	55-65	
0+550	57626	55-60	
0+600	57608	55-65	
+650	57728	6-70	cul c/above c + 700
0+700	57727	80-10	15M s + 2 12M
0+750	57810	70-75	
0+800	57708	60-70	
0+850	57746	65-70	
0+900	57772	70-80	Top of whole ⁶⁰⁰⁰ (same size)
0+950	57701	55-65	
1+000	57809	55-65	
1+050	57711	60-70	
1+100	57644	70-80	H ₂ l l se
1+150	578-11	70-75	5 of // b - ^{net -} _{1/2 cation}
1+200	57916	50-55	+ survey line + found

up to h se
 2 per 1 way between P - + cache

date July 4 1M PM place 5

Kn + 2
 1 + 250 57916 30 55
 1 + 300 57921 51 60
 1 + 350 57922 45 55
 1 + 400 57934 50 - 60
 1 + 450 57925 55 65

c of of ~~Potential~~
 place 2

PM 12 30 NIT 3310 (h use)
 10 M space s
 ← Sam line
 0 + 050 58576 AH → 3200 pa
 0 + 070 58583 3200 J ← apr
 0 + 086 58518 2210
 0 + 090 58712 3200
 0 + 100 59001 3200
 0 + 110 59210 3200
 0 + 120 59204 3230
 0 + 130 59012 3230
 0 + 140 59065 3240
 0 + 150 59344 3250
 0 + 160 58751 3260
 0 + 180 58641 3270
 0 + 190 58415 3280
 0 + 200 58841 3280
 0 + 210 59865 3280
 0 + 220 58425 3280
 0 + 230 59502 3290
 0 + 240 58586 3290



4th July 4

116

After clearing the
10 m readings on the
part of the where we
got high readings
we looked around at
the canyon wall nearest
the high readings. We
take one rock sample
9105i

After supper I hauled
some water & wood
to camp with the Pug

Unc stops in for
a visit he is doing
his assessment work on
his class

Partly Cloudy Warm

Bugs moderate.

We can't set the read-
tel to work

I go to town to get the radio tel check out I also pick up ~~some~~ more maps & supplies. I get back to camp around 8:30 P.M.

Leo ~~was~~ worked on on a test pit near camp

I call BSC in Ottawa about mag interference they forecast quiet for tomorrow and ^{active} unsettled for Sunday July 7

I got mobile tel to work on Quail Lake Ch.

Mostly cloudy Warm

No rain



Leo servicing ATV

date July 6

page 1

Km + m's 57969
0+050 N. - 58047 50-60 3180
0+100 N. 57972 70 50 3185
0+150 N 58049 50 55 3190

from house N to stream
Light rain AM

We walk down with
mag. to pin point our
anomaly. we mark it out
with flagging on trees
We walk up sidney Cr rd
for about 1 mile, it starts
to rain a little heavier
we head back towards
camp for lunch we
stop to talk to Vic,
he is working with
the rockn boy below
lower falls. He has staked
the claim below his (the
one with our lower camp on
it)



Base camp apr. 1 mile up Iron Cr.

It's still raining heavy
after lunch so we
decide to go dig a test
pit on the edge of the
canyon near the mag. anomaly.
we dig in approx 10 feet
in the gravel, no bedrock yet.

IT starts to clear up around
4.00 PM

I go open up some trail
after supper white tea does
the dishes.

I examine the rock sample
we picked up July 4th
Sample # 91-001. The
rock is grey green with quartz
& sulfides with the outside
weathered white (purple tint)
I is magnetic.





July 7

page /

Taking Pictures

Took samples in canyon near mag anomaly

Samples 91-002 } strongly mag.
91-003 }
 app 80' up & SE of creek in canyon

Sample 91-004 outcrop side of canyon
 about 1/2 way app. canyon about 2 samples (magnetic) R.H. side of creek.

← Looking at canyon wall on opposite side of creek from where I took above samples



Clear skies AM
 Cloudy + Rain PM

← rock outcrop samples 91-002
 91-003

- AIT at Asus - 330 -
 3310 7100

Time	Location	Time	Time
0-000	58623	60	3210
0-050	57396	55-0	3215
0-100	57665	50-60	3300
0-150	57711	50-60	3300
0-200	57712	50 55	3300
0-250	57712	50 55	3300
0-300	57701	50 50	3200
0-325	small stream		32
0-350	57472	50-55	3280
0-400	57 02	15 0	3300
0-450	57694	25 10	3300
0-500	57491	50 55	3280
0-515	small stream		32 15
0-538	road	X signs	32 80
0-550	57633	50 60	3300
0-600	57515	45 50	3210
0-650	57610	45 50	3310
0-700	57644	10-10	10
0-750	57599	45 50	3320
0-800	57511	50 50	3330
0-850	57441	40	3370
0-900	57483	110-1	3390

2/2 - 105

Mag readings 200 - 300 gamma
 lower than usual and
 fluctuating lots
 (marked affected by fast moving low cloud)
 0+800 is at #2 post
 quartz claims YB26206-7
 0+900 is at #2 post of
 (Lapsed) claims YB26214-15

Aug 5

No 1	No 1
Mag #2	Mag #1
S	S
1500' R	1500' L
July 8	July 7
1991	1991
Leo	Leo
HAMEL	HAMEL

No 2	No 2
Mag #2	Mag #1
July 8	July 8
1991	1991
Leo	Leo
HAMEL	HAMEL



Leo next to claimposts
 these claims were not
 recorded



We fix the bridge across
 Iron Cr., we can now
 cross with the Pass &
 3 wheels - a Leo sees up trail
 To Sidney Cr.
 I help Leo stake 4 chains
 out the mas anomaly (some
 location as my former claim.
 Camp (5-8' ind) Y82680R-11

Leo HAMEL
 1991
 July 8
 Mag # 4
 No. 2

Leo HAMEL
 1991
 July 8
 1500' R
 S
 Mag # 4
 No. 1

Leo HAMEL
 1991
 July 8
 1500' L
 S
 Mag # 3
 No. 1

date July 8

page 4

Evie Leo does dishes +
gets some water

I finish clearing lower
trail

9:00 PM Bar Pies dropping
ALT reading 3430

I cook up a roast, it's
the last of our fresh meat.

Cloudy all day, only
a sprinkle of rain
On radio television we hear
Someone calling flight services
in Whitehorn about flight from
Whitehorn to Arctic Red river
Rick Nelson + Ed Philips^{are} on board
Person in Quilt Lake has expected
a call from them. No one has heard
from them. FSS says high solar
activity is interfering for HF radio
receptions.



date July 9

page 1

Temp 7°C AIT- 3310
cloudy

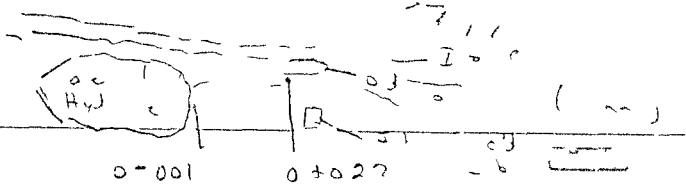
We cross Iron creek
below house and walk
down along canyon
on west side of creek.
We hoped to find a trail
that we could use to
get to the site across
the canyon from our
mag. anomaly. We chip
at bedrock along the way
but don't find anything very
interesting. We decide that
it will be easier to take the
Pug + 3 wheeler down across
our bridge, and then walk up
when we come back with the
magnetometer. Maybe tomorrow
if the mag. storms, aren't active.
We take Mag. + scintillometer readings
over a 22m stretch of old
creek bed just below John's old
cabin. It starts to rain.

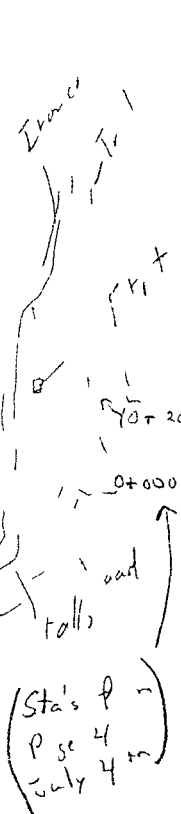


buffalo

House E

date	sub	to	from	to	from
6 001	70	71			
01 010	70			5, 11	
2 1 2	7	80		- 7499	
2+00	7				
2 00-	65	70		579, 2	
2 -	82			- 579	
11-00	80	-		57	
11 006	90			5, 79	
11 007	10			- 57905	
1 00	10-70			5790	
12 011	1-5			5-325	
01 012	80			57929	
01 013	80			57930	
01 011	80	-		5805	
01 015	70	-70		2	
01 016	70	90		-	
01 017	73	80			
01 016	70	10			
01 019	80			579 1	
01 01	8-90	100		540 1	
01 021	80	71			
01 022	7	-8-		5	





It rains at a low hour
 we go back to the BSE do it
 at 20 started on Jul, 6
 we do it down on the 2nd
 still no advice in 2nd
 We start a new pt
 on the left side 1+1
 trail when we start the
 height reading (52317 -)
 the first few feet are
 mostly sand (greenish colour)
 then we get into gravel
 and boulders 3-4 ft
 found 2 small oak 3-1 or
 eatd with small pebbles etc. it is crusty
 cloudy all day rain off
 + on - the evening

Bar pres during (411 read -)
 9:00 pm Temp 8°C (3170)

Called BSE recording Fore-
 is for mag storms to be at
 for to on ow

date July 10

page 1



Temp went down to +2C
 5:00 AM
 8: AM 7°C AIT 33%

Leo diss. test pit
 to test for placer gold
 on right bank of
 Irwin Cr. approx 200' downstream
 from Hyd. site. It was
 4 ft to detect he only
 got a small amount of flower
 gold.

I spend the day looking
 at the bedrock on the
 east side of the creek.
 starting approx 1500' up from
 the Lower Falls (scintilometer reading ^{upto} 150 cps
 in this area)
 At approx 900' up from the
 falls and approx 50' up from
 the creek I find a quartz vein
 with pyrite, chalcoprite and
 malachite stain. I take a sample
 for Assay Sample # 91-005
 scintilometer reading only 20-25 cps
 in this area



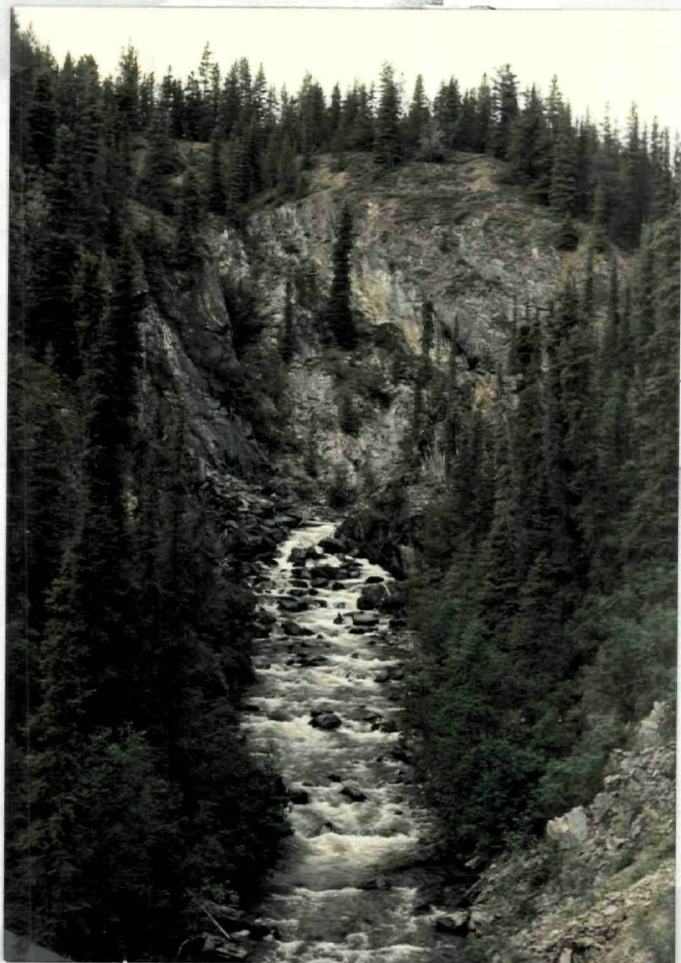
date July 18

page 2

At about 130' above lower falls I take a sample from a granite vein and surrounding rock, there is a trace of galena in the granite. Sample # 91-006
Here the scintillometer is reading is more normal 40-50 cps.

10:30 PM Bar Pres Low AIT - 3530
90C

tried calling GSC Ottawa
radio reception not good enough



← Bend in creek
highest mag readings
rock samples # 91-002
91-003
91-004

Looking up Iron Cu from
where I took rock sample #
91-005

date July 11

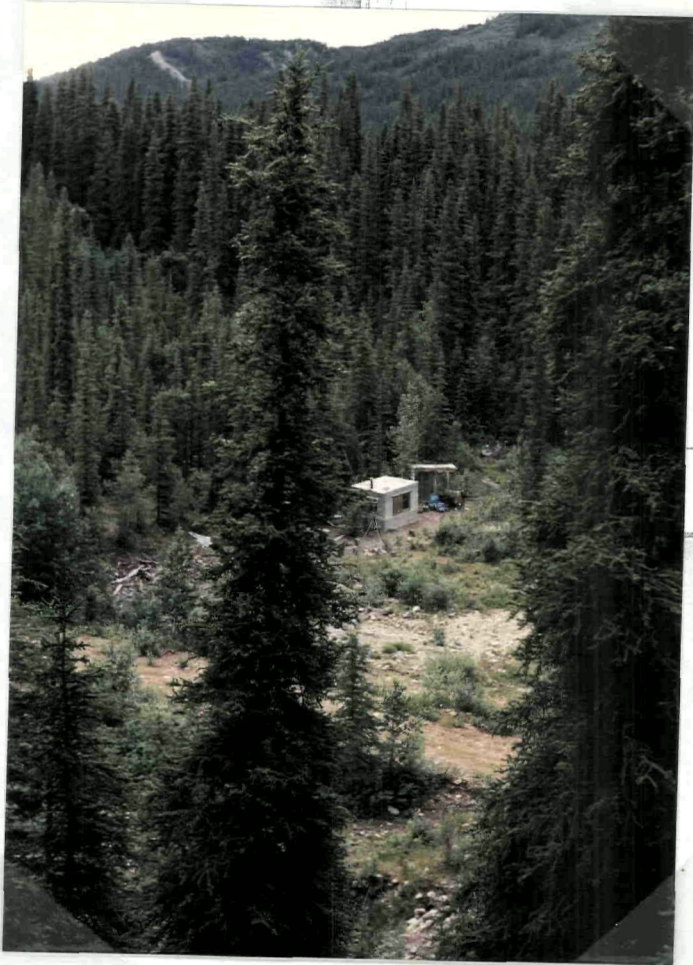
page 1

7:30 AM 4°C AIT 3390

mostly clear sky some high
stratus cloud.

I call Ottawa BSC
recording they say mag
activity will be active
fr. Thurs. Fri. & Sat.

elv. at bridge 3170



Looking down on our
lower camp

below lower falls Iron Cr.

T1 is 1 // was on top of C-100
 left side of 3 - C sta
 5 m or 1 - tall 0 upsta

date July 11 page 2

Km	m	Zone	F
0+000	58080		3210
0+050	58060		3220
0+100	58334	Left	3230
		recross	10
		take	pic
0+150	57970		3240
0+200	57977		3300
0+250	57990		3310
0+300	58667	near top of	3380
		str. h 11 (Pic)	
0+350	58952	access from	3390
		str	
0+400	5711		3370
0+450	58711		3390
0+500	58532		3300
0+550	58571		3100
0+600	58359		3420
0+650	58107		3430
0+700	57832		3410
0+750	57393		3115
0+800	57571		3410
0+850	57666		3450
0+900	57721		3480
0+950	57781		3410
0+1000	57811		3170

pict - of 11 sta

110 27 P. - r At ...
3480 0 + 3305
← 3570

0-000 50m at 0-370
f h h

km + m	West 74	300°	
0+00	58965		310
0+050	58911		3430
0+100	58903		3100
0+150	58881		3150
0+200	58850		3170
0+250	58730		3480
0-300	58574		3190
0+350	58417		3480
0+400	58446		3460
0+450	58454		3490
0+500	58469		3400
0+550	58455		3500
0+600	58485		3550
0+650	58521		3590
0+700	58497		3630
0+750	58037		3660
0+800	58027		3170
0+850	58572		3680

Line G

11
 5
 91
 2

(02 7.1)

Date 5-1-11

Page

Q.N - M	mas		AK
0190	01	58125	5
01100	01	58125	5
01900	1 R	5859	Long G
01900	20R	58617	1
01900	200R	58772	spring 370
01900	200R	58366	5815sam 3720
01900	300R	5815	1 3700
01900	300R	57671	bag 1 3700
01900	400R	57679	3
01900	400R	57777	372

01900	58519	bag 1	Long G	369
11000	58325	1		370
11050	58550	1		3690
11100	58165	1		11
11150	58471	1		3700
11200	58305	1		3710
11250	58154	1	bag 581 times	3700
11300	58447	1	1 1	3715
11350	58272	1	open bag T	3150
11400	58260	1	1 1 1	3700
11450	58229	1	ridge	3780

log n f v (u, 11)

unit 'm', 11 n e 5

		Mos	
Km-m	25L	58425	AIC
0+80	50L	58	
0-90	59L	58	
5' 2" →	100L	58	3700
0+00	150L	58	3670
	200L	58	3650
	250L	58	3620
	300L	58	3600
	350L	57	3580
	400L	57	3560
	450L	57	3540
	500L	57	3520
	550L	57	3500
	600L	57	3480
	650L	58	3460
	700L	58	3440
	725L	58	3420
	750L	58	3400

line ~~to~~ H

disc

sd 1 11

b-1m

top of b "

Road

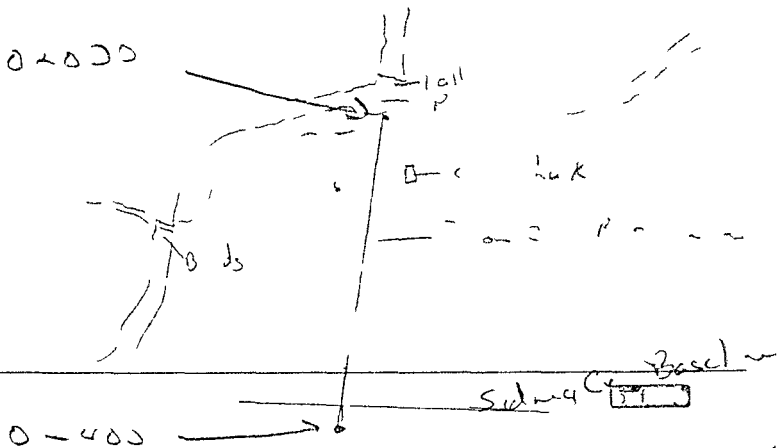
test at

Lots of mosquitos

11 10 9 8 7 6 5 4 3 2 1 0 1 2 3 4 5 6 7 8 9 10 11

Vm+ms	ma	Line & I	AIT
0+000	57867	Falls,	32 20
0+02 -	58009	1st R-11th ^o	32 30
0+050	57994	,	32 30
0+100	58019		32 32 - 1
0+120	5805		32 35
0+200	58115		32 20 ^h
0+250	58027		32 20
0 300	58001		32 30
0-350	58013		32 30
0+370	Sawney P m	Sdnye	Bas km +
0+400	58059		32 - 0

Above line is on I on
 a base line ⁰⁺⁰⁰⁰ starts at the
 pool below 2nd falls leading
 down to Sdnye or near there



Date 1/11
0+0
Page

This L - Stat at 101 of 100 m
 even N rd - h - d - - - - -

km + m	Sidney Cr	1	2	3	4
0+000	57022				3310
0+038	Road				
0+050	57943				3300
0+100	58034				3310
0+150	58073				3320
0+200	57920				3320
0+250	58145	stream			3330
0+300	58139				3320
0+350	58149				3310
0+400	58164				3310
0+450	58153				3310
0+500	58131				3310
0+550	58108				3310
0+600	58101				3300
0+650	58094				3300
0+700	58064				3290

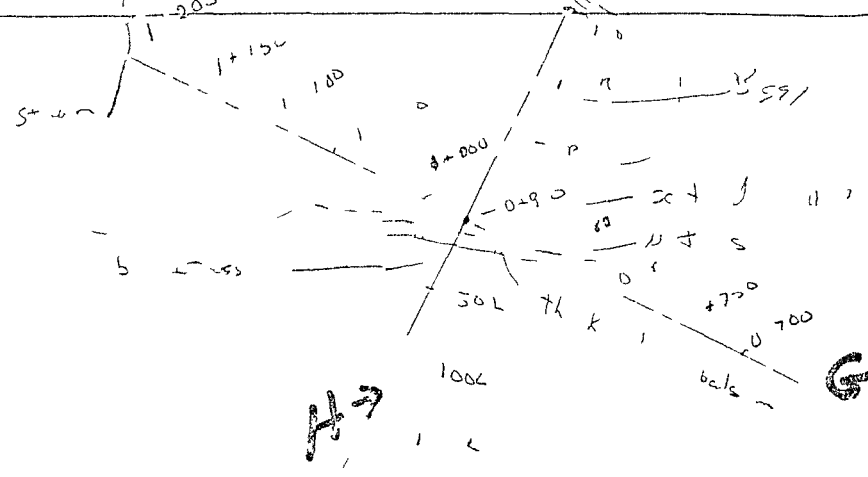
Sidney Cr

6:00 PM AIT back at

read - 3730

Prs ha J, - at

Tutti, 10 m



refer to July 12 last 3400

we did not see any outcrops on the lines

cloudy + we often all 0

1 10 2 3 4 5 6 7 8 9 10

all the ...
ATI 730

to do ... the heart
... 70 ... 11 us
... get out of ...
... pan ...
... 70 ...
... 70 ...
... 70 ...

Shower ... now and ...

7 03 PM AT 2523 15°2



date July 13

page 1

7:00 AM 5°C clear sky AIT 3450

Bank is wet, we make a cut in the rotted bedrock & overburden $\frac{1}{2}$ way up canyon wall, where the creek makes a sharp bend ^{slight (0+659 on 3rd)}. We take a sample of the bedrock at the end of the cut. Sample # 91-007

00 AIT at house 3700
14°C

Line JK

+000 - top of hill past old trailer site down to Sidney Co 1+000

+000 57946 road 3576

0+050 57922 3580

0+100 57946 3598

0+150 58056 3580

200 58162 Top of drop off 3370

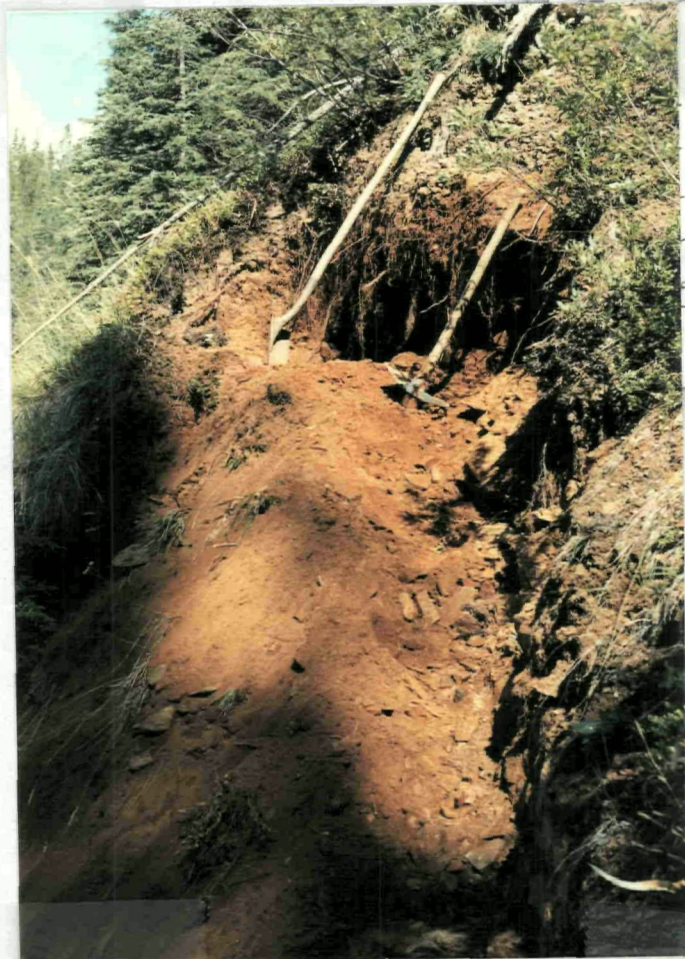
250 58297 close to bottom 3530

300 58443 3500

350 58646 gulley 3500

400 58646 ridge 3530

450 58764 3500



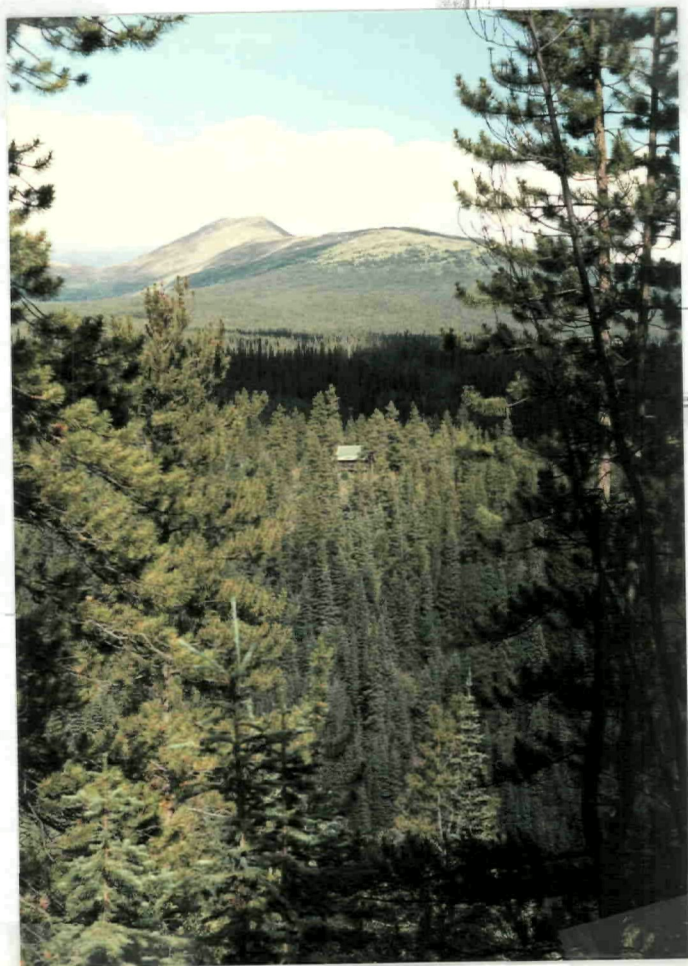
buffalo

0+300	58406		3510
0+550	58326	gully	3490
0+584	57375	top of ridge	3510
0+600	58275	down	3460
0+650	58044	bottom of hillside	3370
0+670	old Test	pit LHS	bucket
0+700	58161		3390
0+750	58169		3388
0+800	58112		3378
0+850	58081		3370
0+900	58067	savory line	3360
0+950	58057		3378
0+980	58025	road, creek	

Sunny & warm all day
No rain

We dig around in the bedrock
below lower falls I take
a sample 91-008
I cut wood for camp after
super while he does dishes

5/13/78



Looking at our main camp
from across Iron Ev. Valley

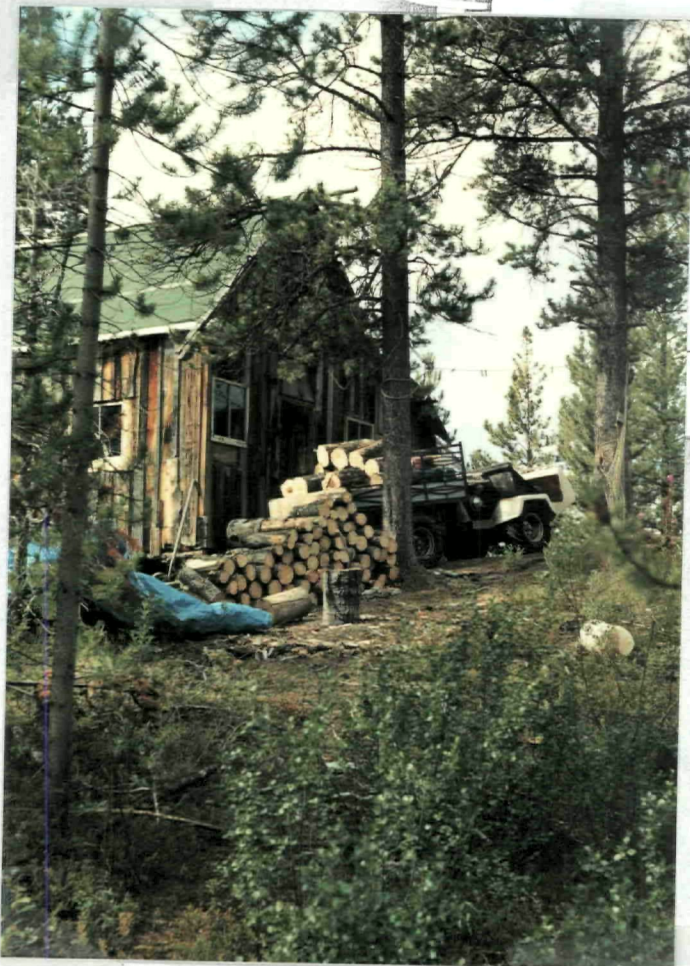
date July 14

page 1

Day off

I go to Jagish

Les stays in camp



Eastman

date July 15

page 1

C
O
Q
J
O
O
O
O
C
C
C
O
I
I go to Whitehorse for
summer IT's summer
= warm I stay at
Tajish suite I put
the fresh meat in the freezer
In the eve AL + I
run the mag along
the line behind the
inclusion we don't come across
anything interesting. Some nodules
on the surface kick about 125-130 cps
Leo works on test pit
over the mag anomaly
It rains off + on all
day

I send 6 sample out
for ASSAY it'll take about
2 wks to get results.
I got some photos done, not
paid some bills tel, commission
etc.

date July 16

page 1

I drove out to Iron Co. -
get there about Noon
Leo is down working on
a test pit

In the Afternoon Leo
& I take the chainsaw
and machete, we clear
a trail for about 1 mile
up Iron Co.

No rain today up to
21°C

Windy cool in eve 10°C

We go prospecting up
Iron Cr. the low to
see any out crop. after
the second canon we
move up from camp.

At this point the water
flashes out and gets wider.
there is lots of back brush
and boggy areas. The
mosquitoes & flies are thick
and hangover. We make it
app 4 miles up the creek
from camp.

mostly cloudy no rain

Placer Lease

Post #1

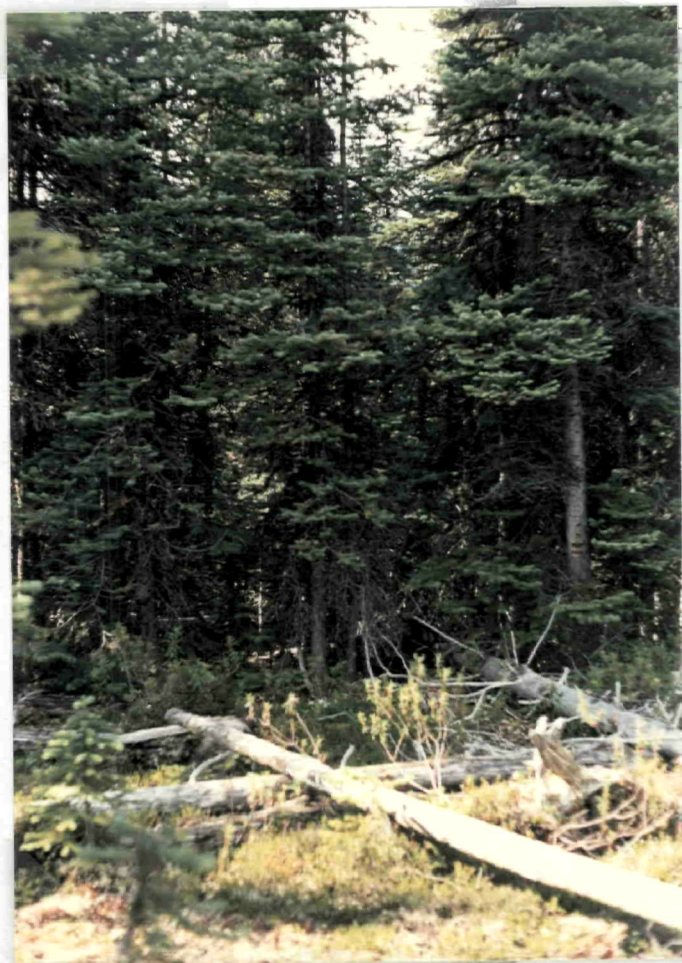
2 miles
up stream

July 17

1991

Robert Hamel





Thick Balsams south side
of treeless strip.

July 18

page 1

cloudy cool AIR - 3520

I try out the aneroidometer readings are fluctuating by as much as 300 gamma within seconds.

Soil sample #	Line - H	
S-001	-	treeless strip.
S-002	25 M R	
S-003	50 M R	moist
S-004	75 M R	Wet
S-005	100 M R	moist
S-006	(153.9) 97	25 M L moist
S-007	50 M L	
S-008	75 M L	
S-009	100 M L	thick Albers
S-010	150 M L	drier
S-011	200 M L	
S-012	300 M L	sandy

We go up Sidney Cr and walk up Line H to take soil samples. We dig a couple of test pits on treeless strip. we don't get down so bad ^{buffalo} neck



Treeless strip

date July 18

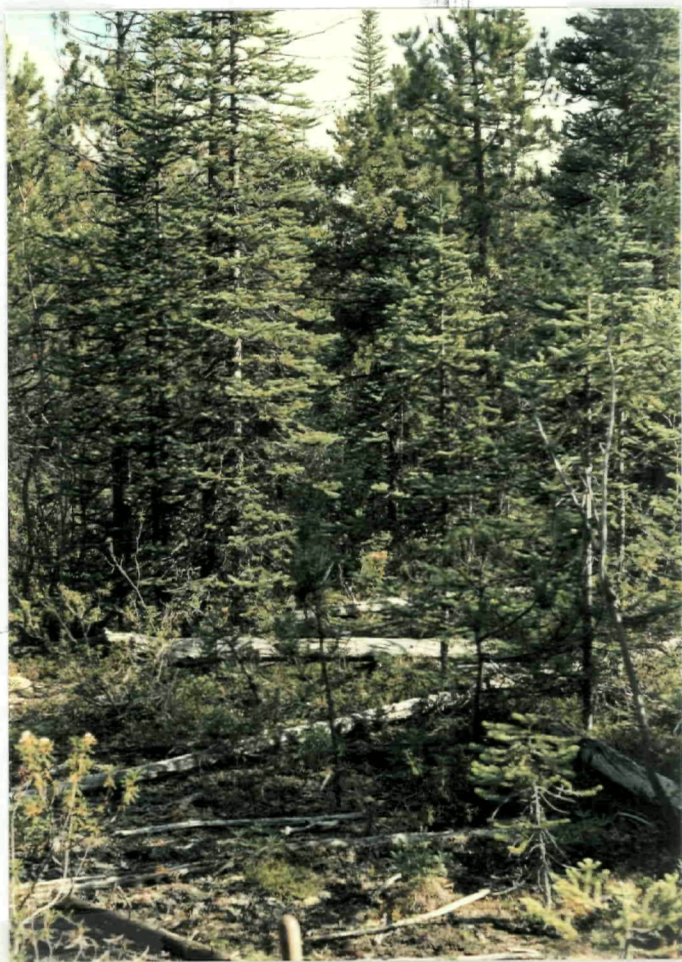
page 2

I take a rock sample from an
out crop near the strip Sample # 91009

S- soil sample #	S- 013	(0+100) line C	
	S- 014		25 M South
123.7	- S- 015	(5 M. N of dam pass)	50 M S
14.1	S- 016	Top of topsoil (road)	75 M S
84.6	S- 017	side hill	100 M S
2.3	S- 018	" " 15 m road	150 M S
	S- 019	Flat moist sandy	200 M S
	S- 020		25 M North
	S- 021		50 M N
	S- 022		75 M N
	S- 023		100 M N
	S- 024		150 M N
	S- 025		200 M N
	S- 026		300 M. N

We take the above soil
samples on line C starting
at 0+100 working both ways
from there.

Cool & windy 31 day
bugs not bad. No rain



North side of treeless strip
scattered spruce + pine

Clouds cool 5°C Alt. 3490
 raining up steep to valley
 Mag. fluctuating quite a
 lot this morning
 we haul some wood &
 water up to camp.
 In the afternoon we
 poke around in the
 canyon

It's raining again in the
 eve

I call Pauline to wish
 her a happy birthday. She
 says it's too hot in Sask
 they are planning a big party
 for the long weekend in
 Sept and wants to know
 if we can make it I tell
 her we probably can

Clouds cool 5°C
 town wants to buy my place at least
 for some time. Ken, Claude & Susan
 were thinking of coming out
 this winter but the rain clouded the market

date July 20

page 1

it rained all night
overcast fog & rain 5°C

Low fogs seen more a
the best part over the
was usually no decrease in

I see up $\frac{1}{2}$ - $\frac{1}{2}$
section double just show
the region and work in
right hand in about 1/2
hour. I get a few bits
of paper from the ground

IT rained 3rd day
until about 6.00 PM
still cloudy in eve.

date July 21

page 1

Day off
mostly clear sunny
and warm + 24
one small shower

Hiked around, checked out
Lower sidney c. trail with
3 wheeler
a few bugs but not bad
at all no ~~need~~ need for
bug dope.

Blue huckleberries are
plentiful this year. they are
just starting to turn blue.

Line 2

date July 22

page

7:00 AM moist soil 20.0 °C

Air at house 3120'

STA	gamma	S = soil sample #	elu
0+000	5777d	road	2930
0+050	57715		2960
0+100	57862		3050
0+150	57944		3130
0+200	58038	S-027	3150
0+238		^	3160
0+250	58041		3170
0+268		✓	3130
0+300	58197	~	3170
0+328		^	3180
0+350	58109	~	3160
0+400	57950	S-027	3170
0+450	57908		3180
0+500	57814		3210
0+550	57832		3250
0+600	57809	slide - (no soil moist) S-029	3290
0+650	57941		3310
0+700	57902		3370
0+750	57936		3400
0+800	57982	S-030	3430
0+750	57904		3170

check below (Allen & willis)

date July 22

page 2

Sta.	gammas	S = Soil sample	elo.
D-903	57944	S-031	3420
0+950	58075	outcrop	3540
1+000	58104	S-032	3590
1+050	58245		3630
1+100	58027	(Lead 45 ppm) S (wetter) - 033	3640
1+133	58203	^	3660
1+150	58319	S-034	3660
1+160	58170		
1+175	58037		3630
1+200	58479	S-035	3690
1+250	58773	stream (wet) S-036	3570
1+300	58200	"	
1+350	58640 (Ac 306)	open spot most S-037	3570
1+400	58353		3630
1+450	58433	S-038	3650
1+500	58410		3660
1+530	58482		3670

rock sample # 91-010

at sta. 1+130 apr 5 M Ltr

on rock out crop (galena ore)

9.00 PM Alt. 3180 - 15°C high cloud

Sta	gammes	Soil sample #	Alt
7 20 AM	clear sky	10°C	3190
0+000	58112	S-057	3220
0+050	58087		3270
0+100	57909	S-036	3308
0+150	57887		3350
0+200	57946	S-055	3406
0+250	57955		3440
0+300	57942	S-054	3485
0+350	57985		3540
0+400	57918	S-053	3590
0+450	57984		3650
0+500	57966	S-052	3688
0+550	57952		3720
0+600	57969	S-051	3730
0+650	57919		3740
0+700	57920	S-050	3750
0+750	57944		3760
0+800	57903	S-049	3770
0+850	57857		3770
0+870	5	stream	
0+900	57900	S-048	3780
0+950	57920		3810
0+000	58077	S-047	3260

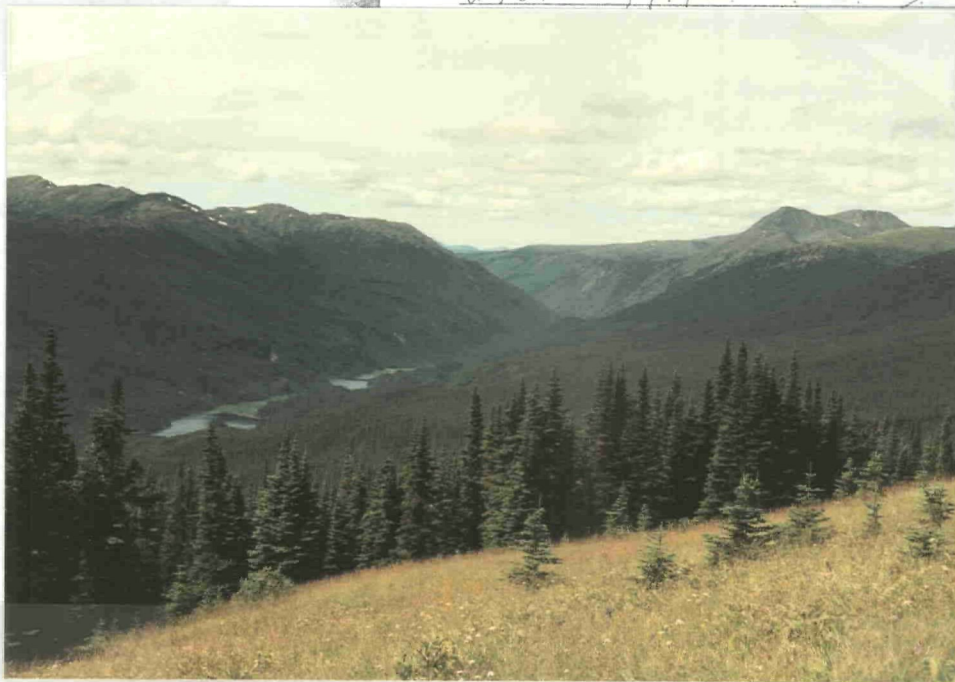
Rocky Quartz
Sample (91-011)

(open just)
do use small area



Leo Looking over
the view from
above line M

Sta.	gammas		soil sample #	dw.
1+050	57989	W		3920
1+100	58045		S-046	3940
1+150	58889	open		3960
1+175	58939	x		
1+200	58480		S-045	4010
1+250	58460			4340
1+300	58338		S-044	4080
1+350	58307			4620
1+400	58274		S-043	4168
1+417	58437	open		
1+421	58475	thick bagen		
1+430	58410	open		
1+450	58268			4186
1+500	58370	gt	S-042	4200
1+550	58235			4238
1+600	58153		S-041	4260
1+650	58548			
1+700	57787			4350
1+750	57852			4380
1+800	57878	moist	S-040	4420
1+850	57867			4460
1+900	57899			4420
1+950	57905			4510
2x000	57925		S-039	4550



Looking SW
Towards Lakes
on sidney Cr.

buttle

We broke the Pass + 3rd section
 up in sidney cr then
 walked up on the game trail
 on the right side of sidney cr
 to the beginning of low
 M (2 previous pages) At
 the end of the line 2000
 we walked up into above
 tree line to look at the
 old camp. I took some
 photos. It was a beautiful
 view. We set back to
 camp around 6:30
 It is still 23°C

Rock sample
 2000 ft
 west of camp
 sample #91-011

Sunny + warm (hot) all day
 lots of bass mosquitoes
 red flies, big black flies you name
 I have a wash in Iron cr
 it's a bit cold, but it
 should felt good.

8:30 Alt. 3920 temp 22°C



Looking SE
 Towards grayling LK.

date July 24

page 1

7:30 am mostly clear sky warm 15°C

Alt. 3450'

Line N

0+000	57940		3550
0+050	57896		3540
0+083		start of hill	
0+100	57913		3570
0+150	57939		3630
0+175	57982		3660
0+200	58026		3660
0+225	58037		3680
0+250	58136		3690
0+275	58168		3700
0+300	58499		3730
0+325	58450		3750
0+350	58245		3750
0+375	57953	0+385 - old camp	3760
0+400	57892		3760
0+425	57890		3770
0+450	57844		3780
0+475	57965		3800
0+500	57940		3810
0+525	57904		3820
0+550	57921		3830

date July 24

page 2

0+600	57974	3860
0+650	57919	3870
0+700	57882	3890
0+750	57777	3900
0+800	58007	3970

Abside line starts just below canyon and follows up on left side of creek. It's a small creek flowing into Sidney Cr from the north joining Sidney Cr apr 1000' down stream from first stake.

We drove this pass to Butcher to the end of the cat trail across S. 1 + twin creeks up to about 1/2 mile of 1st Lake.

battery went dead in ALT
Line 0

0+000 57875

0+050 57879

0+100 57896

S-058

0+150 57967

0+200 = 57813

S-059

0+250 57772

0+300 - 57684

S-060

0+350 = 58138

0+375 57808

0+400 = 57696

0+450 = 57903

0+500 57741

drop off begins, S-061

0+550 57611

0+600 57844

0+650 57783

0+700 57784

baggs wet S-062

0+750 - 57810

0+800 - 57825

0+850 57838

0+871 stream

0+900 57822

S-063

0+950 57798

1+000 57910

1+050 58978

1+075 58304

1+100 58703

1+115 58714

1+150 -58657

1+200 58549

1+250 58556

1+300 58438

1+350 58352

1+400 -58253

1+450 58153

1+500 -58045

1+550 57962

1+600 57952

1+650 57920

1+700 58027

1+750 58133

1+800 58258

1+827 -58969

Flat area

Stream runs ^{per line} on east of ^{20 x 45'} S-064

Small open area Ulike ^{is} street to deep ^{all}

S-065

← Steeper sides etc.

S-066

S+ 067

bottom of hill S+ 068

small lake end of line

After taking many readings
on line N we head
up the mountain on a
heading of 322° for
1,250 meters, where we
started line O (2 previous
pages).

Sunny but bug not
too bad most of the
day (too hot)

got back to base 7:00 PM
it still 25°C

date July 25

page 1

Sunny & warm had va - shower
during the night

0+050	-	5726
0+075		57928
0+050		5750
0+075		57387
0+100	-	57310
0+125		58295
0+150		57336
0+165		57467

We drive out to Jac's
as I have to return
the mes tomorrow.

date July 26

page (

I drive into Whitehorse early
in order to get the
mag. + scrib on the plane to
Van

I bring in 60 soil samples
to NAI as well as 2 rock
samples

The result of the Assay.
on the previous samples

I brought in are not
back from Vancouver yet
I AM told that all the
results should be ready by
next Wednesday.

I pick up 100 soil sample
bags. I go back to Tagish

date July 27

page 1

It rains all day.
I cross Tashik Lake with
the canoe to look at
outcrops up towards
Pennycook cr. (Placer cr.)
I don't find any mineralization

date July 28-29-30

page

days off waiting for
assay results

I go to town to get
assay results, pay bills
etc. they don't get
all the assays done but
I get the soils results
there is a number of
very high grades for silver
on 3 samples

I go back to Tazewell.

I go to town to get the remainder of the ASSAY results. I also put in a claim for the prosp grant

I see Sabah at lunch time to give her the mag nos. she will graft them on a comp for me

I pick up some groceries and head out to Tazuke

I decide to wait until tomorrow to go back to I ran Co as it is raining off + on.

Leo left for down south this morning.

IT'S nice in the AM
I drive out to Iron Cr.
by 2:00 PM it is raining
and it rains till about
6:00, it starts to
rain again around 10:00 PM
and it rains heavy all night

I have a look around when
some of the iron driver samples
were taken

I rains all morning
I do chern split wood etc.

In the after noon I walk
down with a pick & shovel
and do a small test pit
at the location of soil sample
S-015 I only get down
about 3 ft. in gravel
as a thunder storm moves in.
I walk down to our lower
camp to wait it out

I pick up a sample of
the gelsol in quartz vein next
to the lower falls

I head back to camp

IT is very windy, trees
are being blown down

Alt 3960

Pres - rising -

date

Aug 4

page

1

dry off

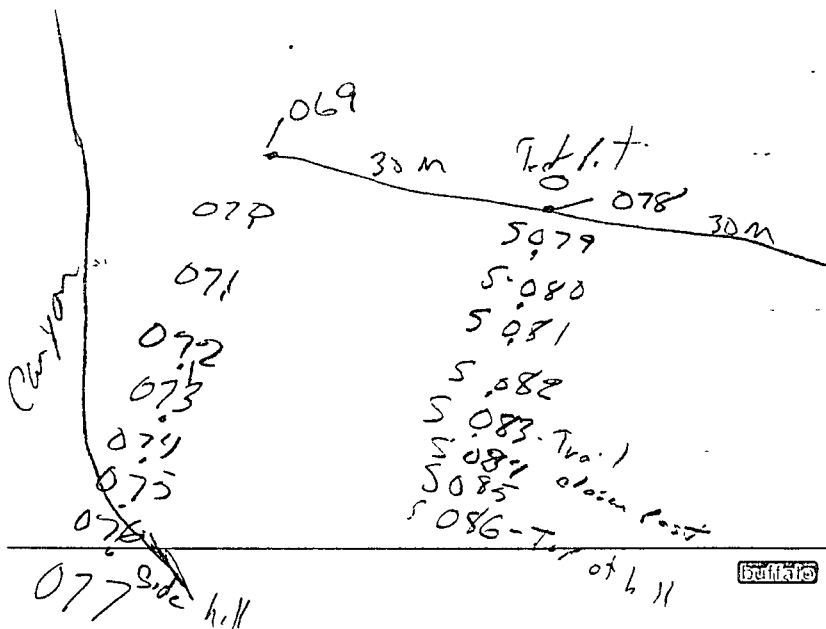
saw Lyr on road
down towards lower camp

re staked 4 Lower
quartz skins

Took soil samples see diagram
below

mostly cloudy cool
no rain some mosquitoes

7:05 Am Alt 3500



date Aug 6

page 1

(Frost)

cold at night

clear + sunny AM

Alt 3360

068	3 AM	077	3M	101
070		079		102
071		083		103
072		091		104
073		082		105
074		1083	trail	106
075		084	claim for quartz	107
076		085		108
077		086	Tarolthill	109
		087	organic	110
		088		111
		<u>089</u>		112
		091	org	113
		092		114
		093		115
		094		116
		095	TP	117
		096		118
		097		119
		098		120
		099		
		100	clay Bovril Tails	

S-015

Sid. Hill
element there

S-016

S-017

S-018

Butler

date Aug 6

page 2

Sunny & warm (80°C)
a few mosquitoes

I take more soil
samples over the area
where I got the high As.
in previous samples (# 5-015-5018)
A bear walked up the trail
from the Iv Cr road to the house

After supper I went
down into the canyon
I took 6 more rock
samples - 91-012, 91-013, 91-014,
91-015, 91-016, 91-017
All these samples are from
the right hand canyon wall
starting at the mag anomaly
going upstream approx 800'
(Sample # 91-017 cu. stain)

date Aug 7

page 1

clear + cold -1°C 6:00 AM
sunny + warm all day 20°C

I go dig a little more
on my test pit over
high ag anomaly, I don't
find bedrock.

I study the canyon walls
below mag anomaly

I take 3 rock sample
from left hand side of
creek. sample # 91-018,
91-019, 91-020.

I leave Iron Co to bring
soil & rock samples
in for ASSAY
I so do Testin to remove
the skidings from the trailer
on my rec. lot on Testin Lake
It rains heavy from 12.00
- 3.00 PM . I stay outside
at Tasish.

I go to Whitehorse
to set sampler in for
ASSAY I go see an
exploration co to see
what they think of the results
I already have. They are
quite excited about the
high silver in the soils
but tell me that I should
get the results checked again
and that I should graft
my result up (mass, soils etc)
I already have more samples
in to check on high results
I'll be getting the results
on these samples next week. Aug 1901

I go back to Tagish

I start to work on
grafting my results up.
I do line L + M

date

Aug 11

page

sunday day off

date Aug 12

page 1

Cloudy warm +20°C
I continue to work on
my paper work.

I finish grapping up
what I have to date.

date Aug 7

page 1

clear + cold -1°C 6:00 AM
sunny + warm all day 20°C

I go dig a little more
on my test pit over
high ag anomaly, I don't
find bedrock.

I study the canyon walls
below mag anomaly

I take 3 rock sample
from left hand side of
creek. sample # 91-018,
91-019, 91-020.

I leave Iron Co to bring
soil & rock samples
in for ASSAY
I so do Testin to remove
the skatings from the trailer
on my rec. lot on Testin Lake
It rains heavy from 12.00
- 3.00 PM . I stay outside
at Tasish.

I go to Whitehorn
to set sampler in for
ASSAY I go see an
exploration Co to see
what they think of the results
I already have. They are
quite excited about the
high silver in the soils
but tell me that I should
get the results checked again
and that I should graft
my result up (mass, soils etc)
I already have more samples
in to check on high results
I'll be getting the results
on these samples next week. Aug 1901

I go back to Jagirek

I start to work on
grafting my results up.
I do line L + M

date

Aug 11

page

sunday day off

date Aug 12

page 1

Cloudy warm +20°C
I continue to work on
my paper work.

I finish grapping up
what I have to date.