

TECHNICAL REPORT

PLACER PROSPECTING OF THE
RIGHT FORK OF HAYES CREEK

1993

GEORGE S. WILSON

TECHNICAL REPORT

CONTENTS

	PAGE
<u>I</u> PREFACE	1
<u>II</u> DESCRIPTION OF WORK	
WORK COMPLETED	2
WORK DETAILS	2, 3, 4
<u>III</u> RESULTS	
HOLE <u>I</u>	5
HOLE <u>II</u>	6
HOLE <u>III</u>	6
HOLE <u>IV</u>	7
HOLE <u>V</u> TRIB OF HAYES	7
<u>IV</u> CONCLUSIONS	8
<u>V</u> MAP AND PHOTOS.	

TECHNICAL REPORT

①

I PREFACE

BETWEEN MID AUGUST AND LATE SEPTEMBER OF 1993 AN ATTEMPT TO PROSPECT THE UPPER LEFT LIMIT FORK OF HAYES CREEK WAS UNDERTAKEN.

THE OUTCOME FROM THIS ATTEMPT WAS THAT THE TASK WAS SUCCESSFUL BUT THE RESULTS WERE TERRIBLY DISAPPOINTING.

THERE WERE THREE MAIN REASONS FOR CHOOSING THIS PARTICULAR AREA AS A HIGH POTENTIAL PROSPECT:

① ELEVEN OLD CABINS ON TWO MILES OF HAYES CREEK EACH CABIN SITE HAVING SEVERAL PROSPECTING HOLES DIG AROUND THEM.

② JUST UNDER THE MOSS AND A FEW INCHES INTO THE GRAVELS, ONE CAN PAN UP TO 18 SMALL COLOURS.

③ AN ATTEMPT IN 1988 AND 1992 TO DIG A SHAFT ON HAYES CREEK SHOWED VERY ENCOURAGING RESULTS, BUT THE SHAFT COULD NOT BE COMPLETED DUE TO THE EXTREME GROUND WATER CONDITIONS.

TECHNICAL REPORT

②

II DESCRIPTION OF WORK

WORK COMPLETED

FOUR SHAFTS WERE DUG TO BEDROCK ON HAYES CREEK. WITH EXCEPTION OF THE FIRST HOLE, THE SHAFTS WERE CRIBBED. A FIFTH HOLE WAS STARTED BUT NOT COMPLETED DUE TO THE POOR RESULTS. ABOUT 300 YARDS UPSTREAM FROM THIS SITE, A SMALL TRIBUTARY FLOWS INTO HAYES CREEK AND ONE ADDITIONAL CRIBBED SHAFT WAS DUG.

ONE OTHER SMALL TRIB. WAS EVALUATED BUT IT WAS DECIDED NOT TO DIG ON THIS CREEK AT THIS TIME.

ALL SHAFTS WERE EVALUATED VERY CAREFULLY AS THEY WERE BEING DUG USING A GOLD PAN AND THE BEST GRAVEL FROM TWO OF THE SHAFTS WERE PROCESSED THROUGH A ONE FOOT PROSPECTING SLUICE BOX.

WORK DETAILS

ALL SHAFTS WERE DUG WITH PICK AND SHOVEL IN THAWED GROUND. ONCE THE WATER TABLE WAS REACHED (APPROX 4 FE.), A FOUR INCH SUBMERSIBLE PUMP WAS USED IN THE BOTTOM OF THE HOLES FOR DEWATERING.

AT FIVE FEET, GRAVEL BECOMES DIFFICULT TO THROW OUT OF THE HOLE WITH A SHOVEL, SO A WINDLASS PLATFORM WAS BUILT OVER

TECHNICAL REPORT

③

EACH HOLE AND DIGGING THEN CONTINUED BY REMOVING THE MATERIAL IN A BUCKET USING THE WINDLASS (PHOTO 1).

USUALLY AROUND SIX FEET, THE SIDES OF THE SHAFTS BECAME UNSTABLE THEREFORE CRIBBING WAS INSTALLED. DEPENDING ON THE INTERIOR CONTOURS OF THE SHAFT WALLS, UP TO 60 POLES, 8 FEET LONG WERE REQUIRED TO COMPLETE A ROUND.

ONCE THE POLES WERE SECURED, MOSS WAS TIGHTLY PACKED BEHIND THE CRIBBING TO STOP FURTHER EROSION OF THE WALLS.

HOLES 3 AND 4 WERE EXTREMELY UNSTABLE AS THEY DEEPEINED. THE GRAVELS DID NOT CONTAIN SILTS OR CLAYS THEREFORE CONTINUED TO WASH OFF THE SIDES EVEN NEAR BEDROCK.

THE CRIBBING FOR THESE HOLES WERE NOT SECURED TO THE WINDLASS FRAME BUT LEFT LOOSE SO EACH POLE COULD BE HAMMERED DOWN AS THE DEPTH INCREASED. THIS WORKED TO A DEGREE BY STOPPING THE PROBLEM OF CONTINUOUS SLOUGHING BELOW THE CRIBBING. WHEN THERE WAS A PROBLEM, THE CRIBBING HAD THE FLEXIBILITY TO BE EASILY EXTENDED (PHOTOS 5+6).

THIS METHOD WAS NOT 100% EFFECTIVE BECAUSE IT WAS ALMOST IMPOSSIBLE TO PACK MOSS BEHIND THE EXTENDED CRIBBING TO STOP ALL SLOUGHING.

ONCE A SHAFT WAS COMPLETED THE WINDLASS PLATFORM AND CRIBBING POLES WERE PARTIALLY SALVAGED FOR REUSE.

EVALUATION OF THE MATERIAL REMOVED

TECHNICAL REPORT

④

FROM EACH HOLE STARTED JUST BELOW THE MOSS. ABOUT EVERY 6 INCHES IN DEPTH, A PAIL OR TWO OF MATERIAL WAS HAULED TO THE CREEK AND PANNED IN ORDER TO RECOGNIZE ANY MATERIAL THAT WOULD BE BULK SAMPLED THROUGH A SLUICE BOX.

THE LAST STAGE WAS TO CLASSIFY THE MATERIAL TO BE SLUICED AND PROCESS IT THROUGH A ONE FOOT SLUICE RUN.

HALF INCH HOLES WERE DRILLED IN THE BOTTOM OF A PLASTIC PAIL. THIS PAIL WAS PLACED INSIDE ANOTHER PAIL OF WATER. MATERIAL WAS SHOUELED INTO THE TOP PAIL AND BY AGITATING THE TOP PAIL, HALF INCH MATERIAL WAS COLLECTED IN THE BOTTOM PAIL.

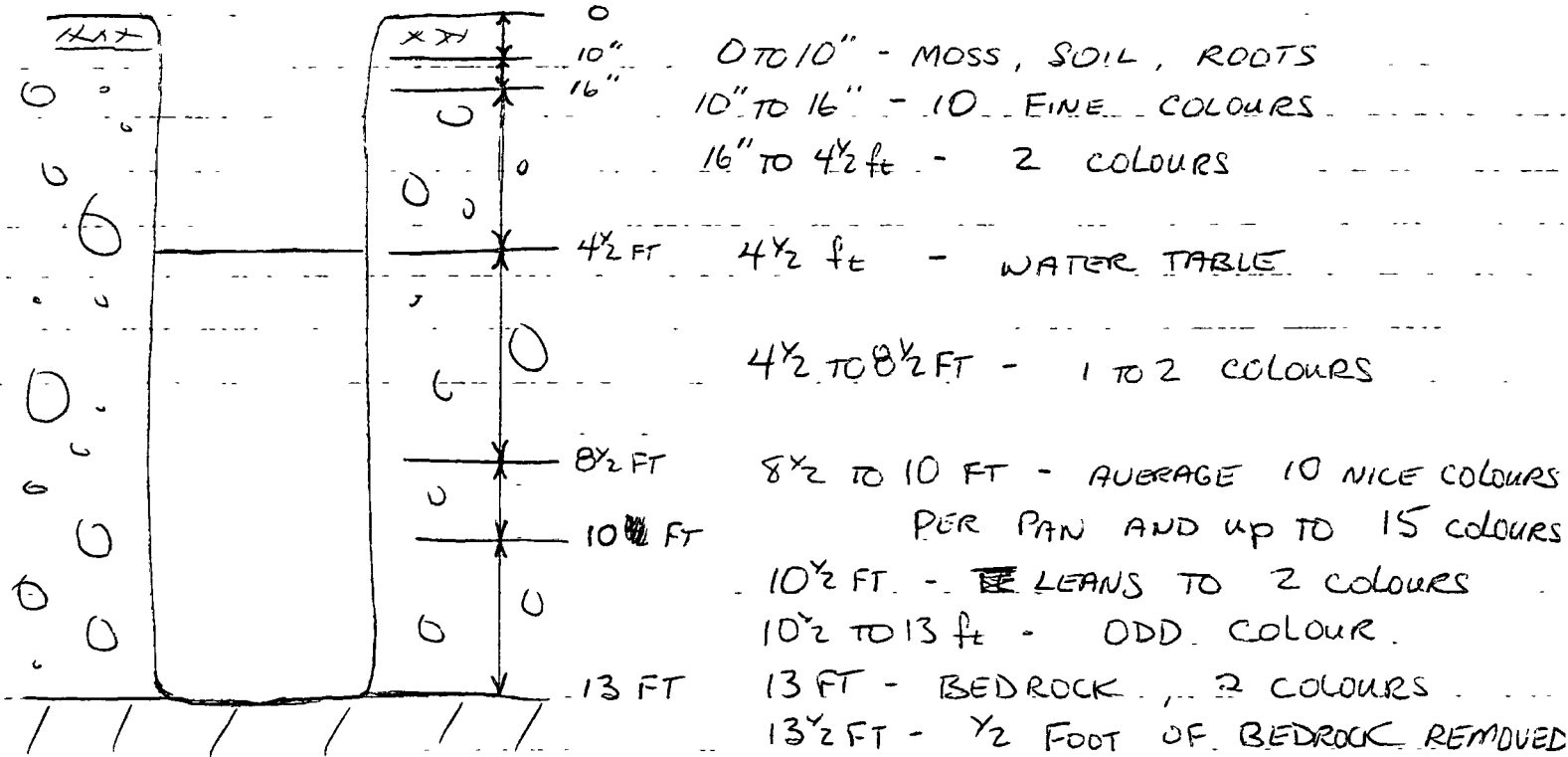
A SMALLER TWO INCH SUBMERSIBLE PUMP WAS PLACED DOWN A SHAFT TO SUPPLY WATER FOR THE SLUICE BOX AND THE CLASSIFIED MATERIAL SLOWLY FEED THROUGH THE SLUICE BOX (PHOTO 2).

TECHNICAL REPORT

5

III RESULTS

HOLE I 4 FT. L x 3 FT W x 13 FT DEEP.



- HOLE SIZE 4 FT LONG x 3 FT WIDE x 13 1/2 FT DEEP.
- APPROX 3/4 CU YD. OF CLASSIFIED MATERIAL SLICED FROM GRAVEL BETWEEN THE 8 TO 12 FOOT LEVEL.
- GOLD RECOVERED 400 MG

TOTAL YARDAGE FROM HOLE $\frac{4 \times 3 \times 13 1/2}{27} = 6$ CU. YDS.

VALUE OF GOLD RECOVERED $\frac{.4 \text{ Gm}}{32} \times \$450 \text{ CAN/oz} \times .85 \text{ FINE} = \4.78

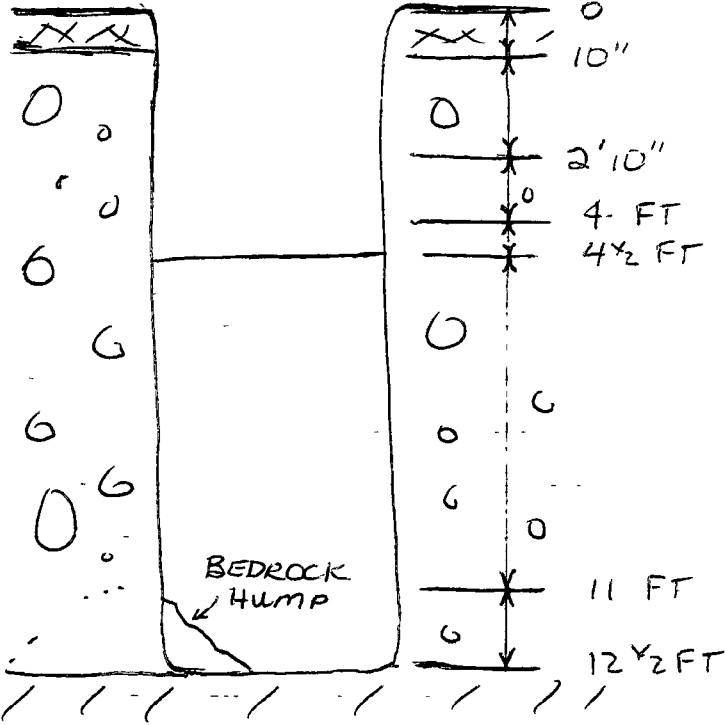
GRAVEL VALUE PER YARD $\frac{\$4.78}{6 \text{ CU. YD}} = \$.80 / \text{CU. YD.}$

TECHNICAL REPORT

6

HOLE II

4' x 3' x 12 1/2 FEET DEEP.



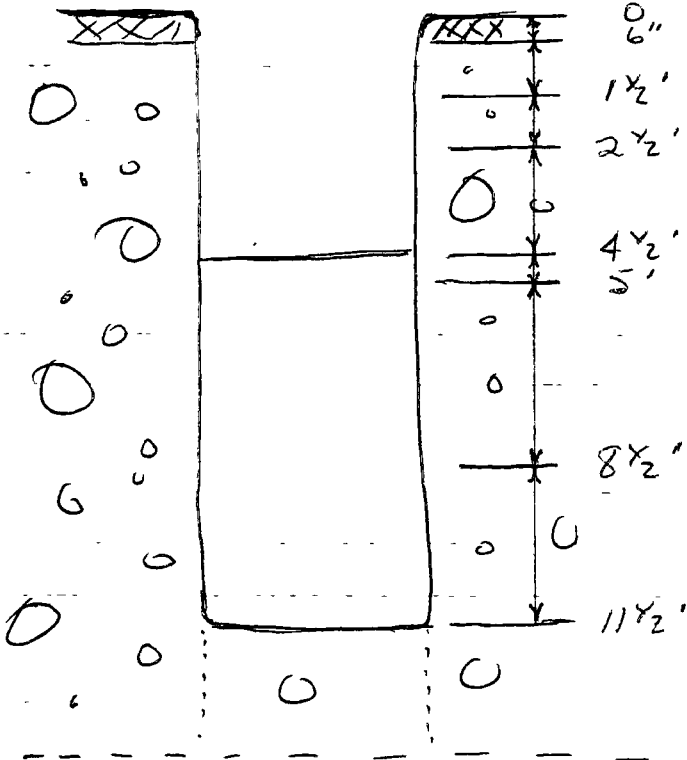
0 TO 10" - MOSS, SOIL, ROOTS
 10" TO 2' 10" - LOOSE ROCK, FEW FINES
 3 TO 4' - 5 TO 7 COLOURS
 4 1/2 FT - WATER TABLE 1 COLOUR/PAN

4' 6" TO 11' - ONE TO TWO COLOURS.

12 1/2 FT - BEDROCK, ONE COLOUR.

HOLE III

4' x 3' x 11 1/2 FEET DEEP



0 TO 6" - MOSS, SOIL, ROOTS
 1 1/2 TO 2 1/2 FT - 4 COLOURS / PAN

4 1/2 FT - WATER TABLE
 5 FT - 5 COLOURS / PAN

5 1/2 FT TO 8 1/2 FT - ONE COLOUR

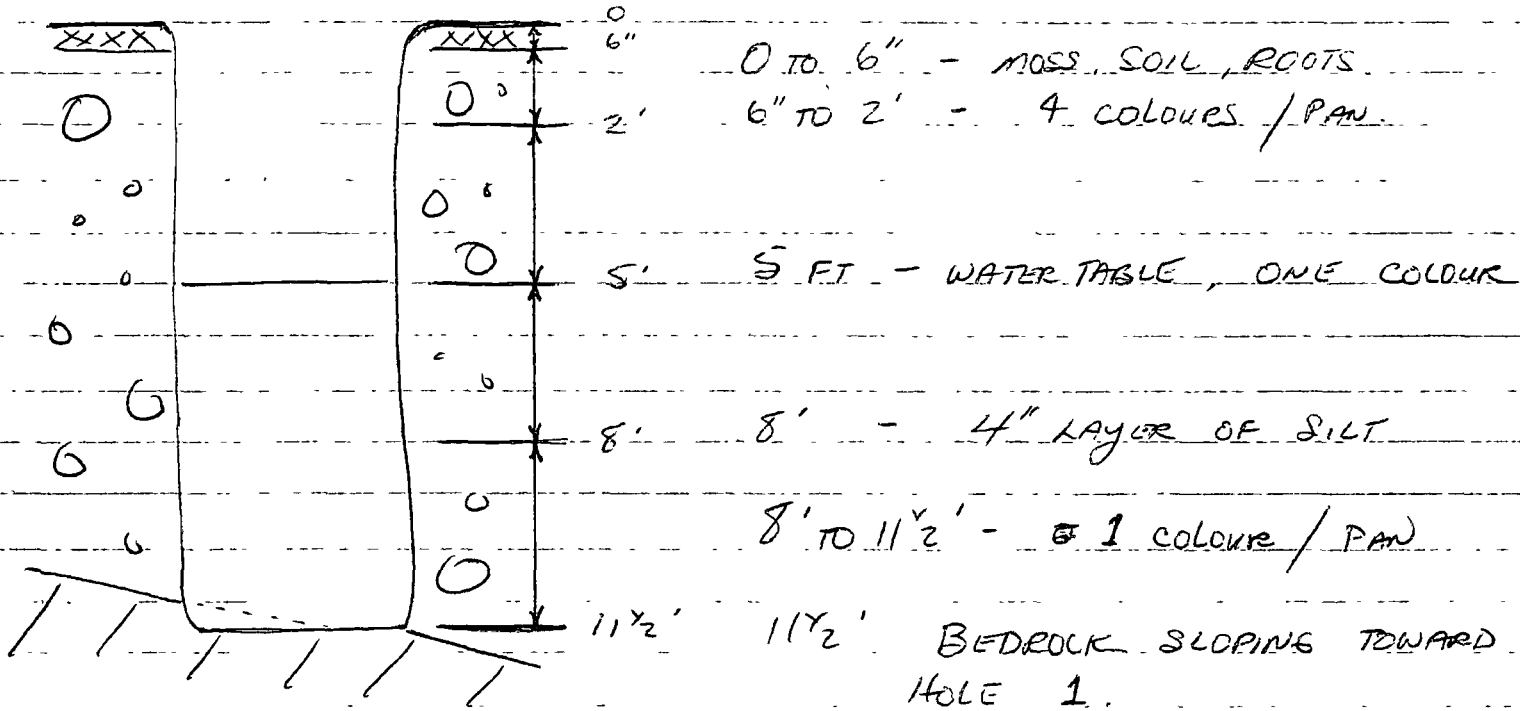
11 1/2 FT - PUMP DOES NOT KEEP UP TO WATER AND HOLE IS LOST - NO GOLD.

TECHNICAL REPORT

7

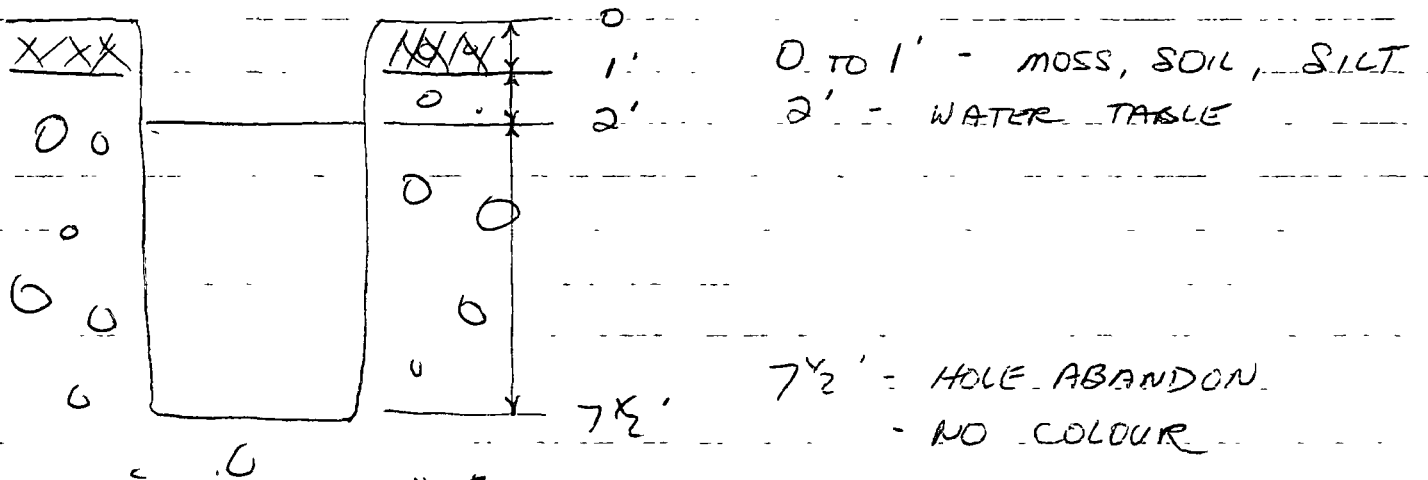
HOLE IV

4' x 3' x 11 1/2 FT. DEEP.



HOLE V

ON TRIBUTARY OF HAYES CK
 4 x 3 x 7 1/2 FT. DEEP.



TECHNICAL REPORT

8

IV CONCLUSIONS.

THERE IS NOT A VIABLE PLACER DEPOSIT ON THE LEFT LIMIT FORK OF HAYES CREEK AT THE POINT WHERE THESE SHAFTS HAVE BEEN DUG. THE PROBABILITY OF A PAYING PLACER FROM THE FORKS OF HAYES CREEK UP TO ITS CONFLUENCE ~~THE~~ WITH APEX CREEK IS REMOTE.

ALL ELEVEN OLD CABINS ARE FOUND IN THIS PORTION OF HAYES CREEK THE PHYSICAL APPEARANCES AROUND EACH CABIN ARE SIMILAR. I.E. - MANY LARGE HOLES INDICATING AN ATTEMPT TO FREEZE DOWN TO BEDROCK - NO EVIDENCE OF SLUICING ANY MATERIAL - FEW ARTIFACTS LEFT LIKELY AN INDICATION OF A SHORT STAY.

THERE IS NOTHING DOCUMENTED ON THE OLD WORK BUT ITS PROBABLY SAFE TO SAY THAT;

① UPPER HAYES SHOWED SURFACE POTENTIAL THEREFORE PROSPECTORS DECIDED TO BUILD CABINS FOR A WINTER ATTEMPT TO FREEZE DOWN TO BEDROCK ② THERE IS NO EVIDENCE AT ANY CABIN OF A SLUICE OR ANY SIMILAR DEVICE, SO ITS LIKELY THEY FOUND WHAT I FOUND ON BEDROCK AND THAT WAS NOTHING.

INDEX

PAGE

DIARY OF 1993
PLACER PROSPECTING
OF UPPER HAYES
CREEK

By.
GEORGE S. WILSON

93-016



ITEM #7711

IMPORTED FROM KOREA BY
BUFFALO EASTCANTRA INC
P O BOX 10, STATION C D N
MONTREAL P Q H3S 2S3

date

MONDAY Aug 16/93

page

HAVE COMPLETED EQUIPMENT
AND FINANCIAL PREPARATIONS
FOR PROSPECTING PROJECT.
PUMP AND GENERATOR ARE
BOOKED FOR PICK UP
TOMORROW. A QUICK STOP
INTO WORKMEN'S COMPENSATION
THEN PICK UP HELPER AND
HOPEFULLY AN EARLY START

buffalo

①

(1)

date TUESDAY Aug 17/93 page

GET OUT OF TOWN BY 10:30 AM AND GET TO THE END OF THE FREE GOLD ROAD BY 5:30 PM. WE TRANSFER EVERYTHING FROM THE TRUCK TO THE NODWELL AND START IN ON THE LAST 15 MILES BY 6:30 PM.

ONLY ONE BARREL OF FUEL CAN GO ON THIS LOAD, THE MACHINE IS OVERLOADED!

IT TURNS OUT TO BE A VERY DIFFICULT TRIP INTO HAYES CREEK ON THE WINTER ROAD. THE BOGS HAVE

THAWED CONSIDERABLY AND THE NODWELL WORKS VERY HARD. IT BOILS OVER THREE TIMES AND IS STILL TUCKER. FINALLY ARRIVED AT CAMP AT 11:00 PM. A LONG DAY!

5/11/73

②

date WEDNESDAY Aug 18/93 page

MICED THE NODWELL UP HAYES CR TO THE FIRST PROSPECTING SITE, UNLOADING THEN SET UP COIL SET AND PUMP BY THE SHAFT ATTEMPTED IN HOLE 1). THE HOLE IS SLOUGHED IN TO WITHIN FOUR FEET OF THE SURFACE BUT THE WINDLASS PLATFORM IS STILL USABLE. WE WILL START TO MUCK OUT THIS HOLE TOMORROW.

SPENT THE REST OF THE DAY STARTING A NEW HOLE (HOLE 2), 40 FEET OVER FROM HOLE 1. WE WILL DIG THIS NEW HOLE TILL THE WATER TABLE IS REACHED. TWO FOOT ID INCHES DUG IN NEW HOLE ON THIS DAY, 10" SOIL 2 FEET LOOSE ROCK WITH NO FINES AND NO CLAY.

5/11/73

date THURSDAY AUG 14/93 page

CONTINUE TO DIG IN HOLE 2 TO FOUR FOOT SIX INCH LEVEL (6" BELOW WATER TABLE) BETWEEN THREE AND FOUR FEET THERE ARE 5 TO 7 NICE COLOURS IN THE GOLD PAN. AT THE WATER TABLE, THERE IS ONLY ONE COLOUR.

USING MY 2" SUBMER-SIBLE PUMP, WE CONTINUE TO DIG THIS HOLE TO 5 1/2 FEET. AT THIS POINT, IT BECOMES DIFFICULT TO THROW GRAVEL OUT WITH A SHOVEL.

WE STOP DIGGING AND START TO BUILD A WINDLASS PLATFORM WHICH IS COMPLETED BY DAYS END.

butab

date FRIDAY AUG 20/93 page

WE DIG IN HOLE 2 USING THE SMALL PUMP UNTIL IT DOES NOT KEEP UP TO THE WATER COMING IN (7 ft). THERE IS STILL ONLY THE ODD COLOUR AT THIS POINT.

WE MOVE THE SMALL PUMP TO HOLE 1 AND GET A START AT MUCKING IT OUT. THE SIDES NEAR THE TOP OF THIS HOLE KEEP SLOUGHING IN AND WE GET DOWN TO THE 5 FOOT LEVEL. THIS HOLE IS GOING TO BE HUGE IF IT CONTINUES TO DISH OUT AT THE SURFACE.

ONCE THIS HOLE IS DOWN TO THE 7 FOOT MARK, WE WILL USE THE 4" PUMP

butab

(5)

date SATURDAY AUG 21/93 page

HOLE 1 CONTINUES TO FALL IN AND WE GET THE HOLE DOWN TO $7\frac{1}{2}$ FEET WITH THE SMALL PUMP.

THIS HOLE HAS BEEN A DIFFICULT ONE AND PERHAPS IT WILL HAVE TO BE CRIBBED AS WE GO DEEPER.

THERE ARE NOW TWO HOLES READY FOR THE 4" SUBMERSIBLE AND WE WILL START USING THAT PUMP TOMORROW.

TO DATE, THE WEATHER HAS BEEN EXCELLENT BUT THE BUGS ARE BAD.

buffalo

(6)

date SUNDAY AUG 22/93 page

ONCE EVERYTHING IS SET UP FOR THE 4" PUMP, WE TRY A DRY RUN. THE GEN SET BARELY STARTS THE SUBMERSIBLE OUT OF THE WATER. I DON'T THINK IT WILL START IT SUBMERGED. THAT DOES NOT PRESENT ANY REAL PROBLEM, THE IMPORTANT THING IS IT STARTS!

ONCE THE PUMP ^{WAS} LOWERED INTO HOLE 1, IT PUMPED IT DRY IN SECONDS. THE HOLE WAS DOWN TO $10\frac{1}{2}$ FEET BY DAYS END. THE PUMP STILL HAS LOTS TO GO BEFORE IT PUMPS AT MAXIMUM.

THERE IS AN INCREDIBLE AMOUNT OF WATER COMING INTO THE HOLE AT $10\frac{1}{2}$ FEET AND HOPEFULLY THE PUMP WILL GET US TO BEDROCK. WE'LL KNOW TOMORROW.

buffalo

7

date MONDAY AUG 23/93

page

A TERRIBLE DAY WEATHER WISE, 45°F AND DRIZZLE. MACHINERY RUNS WELL. VERY HARD DIGGING NOW WORKING AROUND THIS RATHER LARGE PUMP. MAKE IT DOWN TO 12½ FEET AND THE WATER FLOWING IN IS REMARKABLE. THE PUMP IS STILL KEEPING UP BUT IF BEDROCK IS MUCH DEEPER, I DOUBT WHETHER THE PUMP WILL DO THE JOB.

THERE WAS PANS WITH 10 REAL NICE COLOURS AT THE 8½ FEET LEVEL JUST AS THIS HOLE WAS LOST IN 1988.

THESE PANS CONTINUED DOWN TO ABOUT 10 FEET, BUT FROM 10 TO 12½ FT, ITS LEANED OUT TO ONLY A COUPLE OF COLOURS. MAYBE ON BEDROCK?

entails

8

date TUESDAY AUG 24/93

page

ANOTHER COLD RAINY DAY! WE GET DIGGING ABOUT 10.30 A.M AND BY 1:00 PM BEDROCK STARTS TO SHOW UP. STOP AND TAKE A FEW PANS THEN GO BACK DOWN AND DIG INTO BEDROCK.

IT WAS VERY DIFFICULT AT THE LAST TO DIG OUT BEDROCK DUE TO THE AMOUNT OF WATER COMING IN. THE PUMP DOES THE JOB ALTHOUGH ITS CLOSE. EVEN SO, I WAS WORKING IN 8" OF WATER AT THE LAST.

WE PAN SOME MORE AFTER SHUTTING DOWN THE MACHERY. THERE IS ONLY THE ODD COLOUR!

SEEMS THE BEST SHOWING WAS BETWEEN 8½ AND 10 FEET (10 TO 15 COLOURS). IT ALMOST SEEMS THE GRAVEL CHANGES COMPACTION DENSITY AND THEREFORE COULD ACT AS A FALSE BEDROCK AT 10 FEET.

entails

date

page

THE FINAL DEPTH OF THE HOLE I WAS $13\frac{1}{2}$ FEET. IT WAS VERY DANGEROUS AND THE REMAINING HOLES WILL BE CRIBBED FROM THE SURFACE DOWN TO 6 OR 8 FEET.

buffalo

(9)

date WEDNESDAY Aug 25 / 93 page

BEGIN BY MOVING EQUIPMENT TO HOLE 2. NEXT WE START TO CUT 2 TO 3" TREES, 8 FEET LONG FOR CRIBBING. APPROXIMATELY 50 TO 60 POLES ARE NEEDED SO WE SPEND MOST OF THE DAY ROUNDING THEM UP AND LIMBING THEM.

THE WEATHER CLEARED OVERNIGHT AND IT WAS A FINE DAY AFTER THE LAST TWO.

buffalo

(10)

date THURSDAY AUG 24/93 page

WE USE THE SMALL PUMP IN HOLE 2 TO DRAIN THE WATER IN ORDER TO CRIB. ONCE THE HOLE IS CRIBBED, THE 4" SUBMERSIBLE IS USED AND WE START DIGGING.

ALTHOUGH THE HOLE IS SAFE, THE CRIBBING RESTRICTS THE WORK AREA ESPECIALLY WITH THE 4" PUMP. THE HOLE MUST BE WIDENED SOMEWHAT BELOW THE CRIBBING TO GIVE ENOUGH ROOM TO MANOEUVRE. WE GET IT WORKABLE BUT ONLY MAKE IT DOWN TO APPROX 8 1/2 FEET.

THE CREEK IS ONLY UP marginally AFTER THE LIGHT RAINS OF THE LAST FEW DAYS AND WE ARE NOT HAVING ANY TROUBLE GETTING BACK AND FORTH TO THE HOLES ON THE TRIKE.

DAT CAN ONLY HELP FOR

date

page

ONE MORE DAY AND THE FRESH MEAT IS NO LONGER FRESH, SO ITS TIME FOR A QUICK TRIP TO TOWN IN THE NEXT DAY OR SO

(11)

date FRIDAY AUG 27/93

page

WE START A THIRD HOLE,
40 FEET OVER FROM HOLE 2.
HOLE 3 IS WORKED DOWN TO
THE FOUR FOOT MARK BY DAYS
END, JUST SHORT OF THE WATER
TABLE. AGAIN THERE IS COLOUR
ON THE SURFACE (APPROX 1 1/2 FT.)
BUT RUNS OUT BY 2 1/2 FEET.

WE RETURN TO CAMP EARLY
AND START TO ORGANIZE FOR
THE TRIP OUT. NODWELL READY
TO GO BY 10.00 PM. WE
WILL TRY FOR AN EARLY
START ON SATURDAY IN
ORDER TO TRAVEL IN THE
COOL OF THE DAY AND
HOPEFULLY AVOID BOILING
OVER THE NODWELL. I MUST
TRY TO GET A NEW RAD FOR
THE NODWELL BEFORE I COOK
THE ENGINE.

buffalo

(12)

(2)

date SATURDAY AUG 26/93

page

7:30 AM DEPARTURE, TO
THE TRUCK. BY 11:30 AM
AND INTO WHITEHORSE BY
8:30 PM.

buffalo

LEAVE TOWN BY 9:30 AM.
 PICK UP NEW HELPER (PAUL
 ROBERTS) IN CARMACKS
 AND CONTINUE DOWN THE
 FREE BOLD ROAD. GET TO
 THE NODWELL ABOUT 4:30
 AND READY FOR THE LAST
 LEG BY 5:30 P.M.

ARRIVE IN CAMP JUST
 BEFORE DARK, ANOTHER 12
 HOUR TRIP IN. NO TROUBLE
 WITH NODWELL COMING IN
 BUT THE TRAIL IS VERY
 BOGGY.

WE LOAD A BARREL OF DIESEL
 AND THE GEN SET BACK
 ONTO THE NODWELL AND MOVE
 THE NODWELL BACK TO THE
 PROSPECTING SITE.

WE START DIGGING IN HOLE 2
 AND BY DAYS END WE ARE
 DOWN TO 11 FEET. THIS
 HOLE WILL BE FINISHED TOMORROW.

SO FAR THIS HOLE HAS
 SHOWN VERY LITTLE COLOR IN
 THE PAN FROM 8 1/2 TO 11 FEET,
 UNLIKE HOLE 1

ALTHOUGH PAUL HAS NOT
 HAD ANY EXPERIENCE DIGGING
 PROSPECTING SHAFTS, HE IS
 AN EXCELLENT WORKER AND
 HAS NO TROUBLE CATCHING
 ON. I'M VERY PLEASED WITH
 HIS EFFORT.

date THURSDAY SEPT 2/93 page

WHILE DIGGING IN HOLE 2, THE HOSE FROM THE PUMP BLOWS OFF AND THERE IS A 4" GUSHER DOWN THE HOLE. I'M IN THE HOLE AND PAUL IS AWAY FROM THE WINDLASS WHEN THE HOSE BLOWS OFF. I'M DRENCHED INSTANTLY AND THE WATER IS SO COLD THAT IT TAKES MY BREATH AWAY. I TRY TO CLAMBER UP THE LADDER BUT BEFORE I GET OUT, PAUL IS BACK, RECOGNIZES THE DILEMMA AND SHUTS OFF THE PUMP. I'M FROZEN!

AFTER CHANGING CLOTHS AND FIXING THE PUMP, WE FINISH THE HOLE AT THE SAME DEPTH AS HOLE 1 (ONCE THE SURFACE GRADE IS TAKEN INTO ACCOUNT). ABOUT 1 1/2 FEET ABOVE BEDROCK, A BEDROCK

date page

HUMP STARTED TO APPEAR IN ONE CORNER, BUT DID NOT POSE A PROBLEM IN GETTING TO THE BOTTOM.

THIS HOLE HAS PRODUCED NOTHING IN THE GOLD PAN AND IT IS LIKELY NOT WORTH SLUICING ANY OF THE GRAVEL FROM IT.

INSTEAD OF STARTING IN HOLE 3, I'VE DECIDED TO START A FOURTH HOLE ON THE OTHER SIDE OF HOLE ONE SINCE HOLE TWO PRODUCED POOR RESULTS IN THE PAN.

TEMPERATURE REACHED 70°F TODAY, WHAT A DIFFERENCE A YEAR MAKES. LAST YEAR WE HAD SNOW AT THIS TIME.

(16)

date FRIDAY Sept 3/93

page

START HOLE 4 APPROX 50 FT OVER FROM HOLE 1. THERE ARE A FEW COLOURS IN A PAN JUST BELOW THE SURFACE BUT RUNS OUT AT 2 FEET.

WE GET THE HOLE DOWN TO 4 FEET AND ONCE AGAIN THE GRAVELS ARE SO LOOSE.

THEY SLOUGH IN CONTINUOUSLY AND THE HOLE QUICKLY BECOMES VERY LARGE AT THE TOP. WE WILL CRIBB THIS HOLE AT 6 FEET SO THAT IT DOES NOT GET TOO MUCH BIGGER.

ANOTHER GLORIOUS DAY BUT THE BLACK FLYS COME OUT IN DRIVES IN LATE AFTERNOON. WE HAVE NO BUG DUPE WITH US AND CHOKER ON THEM.

buffalo

(17)

date SATURDAY Sept 4/93

page

DIG HOLE 4 DOWN TO 6 FEET THEN START CUTTING SOME POLES FOR CRIBBING. WE DISASSEMBLE THE WINDLASS PLATFORM FROM HOLE 2 AND WILL USE IT AND WHAT CRIBBING WE CAN RECOVER IN THIS HOLE.

By DAY'S END WE HAVE THE WINDLASS SET UP AND THE CRIBBING IN PLACE. WE START TO GATHER THE MOSS TO STUFF BEHIND THE CRIBBING AND GET A START AT PUTTING IT IN PLACE.

WATER TABLE IN THIS HOLE STARTS AT 5 FEET.

I'M GOING TO TRY SOMETHING DIFFERENT WITH THE CRIBBING THIS TIME. THE POLES WILL NOT BE PERMANENTLY NAILED TO THE WINDLASS FRAME AND SINCE WE CUT THE POLES

buffalo

date

page

8 FEET LONG, IT STICKS UP ABOUT 2 FEET ABOVE THE WINDLASS FRAME. AS THE HOLE IS DUG DEEPER, WE WILL TRY TO POUND THE PILES DOWN AS THE DEPTH INCREASES.

ANOTHER GREAT DAY
65°F

Bulldo

(18)

date

SUNDAY SEPT 5/93

page

FINISHED CRIBBING AND CLEANED OUT HOLE. MOVED NODWELL AND PUMP OVER TO HOLE 4 THEN SET UP GEN SET AND PUMP.

DUG TO 8½ FEET BY DAYS END. THE GRAVEL FROM THE WATER TABLE DOWN SEEMS TO BE GETTING SLIGHTLY MORE TIGHTLY PACKED AND IS DEFINITELY HARDER TO DIG.

AT 8 FEET, HIT A 4" LAYER OF SILT AND BELOW THAT WAS A LAYER OF ROCK WHICH WE WILL DEAL WITH TOMORROW.

ONE COLOUR AT 8½ FEET

THE FIFTH OR SIXTH BEAUTIFUL DAY IN A ROW!

Bulldo

19

date MONDAY SEPT 6 / 93

page

VERY HARD DIGGING THE MATERIAL IN THIS HOLE COMPARED TO THE OTHER HOLES. BY THE TIME YOU GET A BUCKET FULL TO BE WIPED OUT, YOUR BACK IS SORE FROM BENDING OVER.

THE SIDES ARE SLOUGHING IN SOMEWHAT EVEN THOUGH THE MATERIAL SEEMS TO BE PACKED TIGHTER BUT WE ARE ABLE TO STUFF SOME MOSS BEHIND THE CRIBBING FROM BENEATH THE POLES. THE HOLE IS SMALLER THAN THE OTHERS ALSO MAKING IT HARDER TO WORK. HOWEVER, LESS DIRT IS COMING OUT THEREFORE LESS WORK, RIGHT?

THE HOLE IS DOWN TO 11 FEET BY DAYS END AND AGAIN A DISAPPOINTING SHOWING IN THE PAN SO FAR COMPARED TO HOLE 1

RECORDED TEMP. I'M SURE.
CLEAR + CALM.

20

date TUESDAY SEPT 7 / 93

page

BEDROCK APPEARS AT 11 1/2 FEET AND THERE IS ONLY A COLOUR OR SO IN A PAN WITH FEW HEAVIES. WHEN YOU TAKE INTO ACCOUNT THE DIFFERENCE IN SURFACE ELEVATION AND THE DEPTH OF THIS HOLE, BEDROCK IS SLOPPING TOWARD HOLE 1. ONE MORE HOLE SHOULD BE ENOUGH TO BE SURE WE'RE NOT MISSING ANYTHING.

WE SPEND THE LATE AFTERNOON LOOKING AT A SMALL PUP THAT COMES INTO HAYES CRK JUST ABOVE WHERE WE ARE DIGGING. IT IS THAWED AND WE CANNOT GET TOO FAR DOWN IN THE GRAVEL BEFORE WE HIT WATER. THERE ARE A SURPRISING AMOUNT OF HEAVIES IN A PAN EVEN AT 2 FEET. MAYBE I'LL

date

page

TRY A SHAFT UP THERE
AFTER HAYES CREEK HAS BEEN
COMPLETED. IF I CAN GET
THE NODWELL UP THERE I'LL
USE THE SMALL PUMP AND
SHOULD BE ABLE TO GET
A HOLE DOWN IN TWO DAYS
OR SO.

UNSETTLED WEATHER, SOME
SUN SOME CLOUDS, SOME
RAIN AND THUNDER (ON Sept 7)

21

date

WEDNESDAY Sept 8/93

page

DECIDE TO COMPLETE HOLE
3. DIG IT DOWN TO 5 FEET
THEN TAKE APART THE
WINDLASS PLATFORM AND
SALVAGE THE CRIBBING FROM
HOLE 4.

WE GET THE WINDLASS
FRAME AND CRIBBING IN PLACE
AND WILL MOSS BEHIND THE
POLES TOMORROW.

CLEAR DAY TILL NOON THEN
PARTLY CLOUDY IN AFT. 60°F

(22)

date

THURSDAY Sept 9/93

page

FINISHED CRIBBING AND GET THE PUMP AND GEN SET IN PLACE. PAN 5 COLOURS AT 5 FEET BUT THATS IT. DIG THE HOLE TO 8 1/2 FEET AND LAST PAN OF THE DAY HAS ONE COLOUR.

THE SIDES OF THIS HOLE ARE STANDING UP WELL COMPARED TO THE OTHER HOLES. IF THERE IS SOME GOLD IN THIS HOLE, I MAY DIG ONE MORE BETWEEN HOLE 1 AND HOLE 4, BUT SO FAR THE RESULTS ARE ULRY POOR.

AT DAYS END, THE BLACK FLYS ARE BAD BUT THE WEATHER IS GREAT.

buffalo

(23)

date

FRIDAY Sept 10/93

page

START DIGGING IN HOLE 3 AT 8 1/2 FEET AND BY 2:00pm WERE DOWN TO 10 1/2 FEET. AFTER LUNCH AND AT ABOUT THE 11 FOOT LEVEL, ~~THE~~ WATER STARTS GUSHING UP FROM THE BOTTOM OF THE SHAFT AND ABOUT 6" DEEPER, THE PUMP DOES NOT KEEP UP WITH THE WATER COMING IN.

ITS INCREDIBLE THAT A 4" PUMP DOING OVER 400 GALLONS A MINUTE CANNOT KEEP UP WITH THE WATER IN A HOLE AT 11 1/2 FEET, BUT THATS WHERE THE HOLE IS LOST.

WHEN I SEE THE PUMP IS AT MAXIMUM, I TAKE OUT A FEW SAMPLE BUCKETS OFF THE BOTTOM FOR PANNING. THERE IS NOTHING, BUT I GUESS THATS TO BE EXPECTED

buffalo

DUE TO THE UPWARD WATER FLOW ON THE BOTTOM.

I WILL RETHINK TOMORROW MORNING THE RELEVANCE OF ANOTHER HOLE BUT RIGHT NOW I FEEL IT WOULD PROVE NOTHING. I THINK I'LL PROBABLY TRY A HOLE ON THE SMALL PUP JUST UPSTREAM

WEATHER: COLD, RAINY, WINDY
45°F

HAVE DECIDED TO TRY THE SMALL PUP UPSTREAM. WE DISMANTLE AND LOAD EVERY THING ONTO THE NODWELL AND MOVE UP INTO THE SMALL CREEK ABOUT 100 YDS FROM THE MOUTH.

AFTER PICKING A SPOT FOR A SHAFT, WE STRIP THE OVERBURDEN DOWN TO GRAVEL AND FIND THE WATER TABLE RIGHT THERE. THE CREEK IS THAWED.

DIGGING IS EASY BECAUSE THE GRAVELS ARE LOOSE AND FINE. THIS POSES A PROBLEM WITH THE SIDES FALLING IN SO WE START TO CUT POLES FOR CRIBBING AND GET A START ON THE WIND LASS PLATFORM BEFORE DAYS END. WERE DOWN ABOUT 4 FEET, NO HEAVIES, NO GOLD.

date

page

WILL DIG ONE MORE DAY IN
THIS HOLE AND GO TO TOWN
ON MONDAY.

BEAUTIFUL DAY AFTER THE
MISERABLE DAY WE SPENT
YESTERDAY.

(25)

date

SUNDAY SEPT 12/93

page

WE USE THE CRIBBING METHOD
USED IN HOLES 3 AND 4 WHERE
WE POUND DOWN THE CRIBBING
AS THE HOLE DEEPENS. EVEN
USING THIS METHOD, THE
SIDES KEEP FALLING IN
UNDER AND BETWEEN THE
POLES (THE GRAVELS BEING
FINE WITH EXCESSIVE SEEPAGE
FROM ALL SIDES).

WE GET THE HOLE DOWN TO
7 1/2 FEET BUT HAVE YET TO
SEE ONE COLOUR IN THE
GOLD PAN.

THE MATERIAL BEHIND THE
CRIBBING ERODES AWAY
THROUGH THE BOTTOM OF THE
CRIBBING SO BADLY THAT
THE MATERIAL FALLING
BEHIND AND AGAINST THE
CRIBBING STRAINS AND
BOWS THE POLES TO THE
POINT WHERE THE HOLE

IS BECOMING VERY DANGEROUS.
By 6:00 PM WE DECIDE
THAT ENOUGH SINCE NOT
ONLY IS IT UNSAFE, WE
HAVE STILL TO SEE A
COLOR.

THIS HOLE WILL OBVIOUSLY
NOT BE EVALUATED.

WE PACK UP AND PREPARE
TO HEAD TO TOWN TOMORROW.
THE PUMP AND GEN SET WILL
GO BACK TO TOWN SINCE
ITS DUE BACK AND I
SEE NO POINT IN DIGGING
MORE HOLES.

I'LL PICK UP FOOD AND
RETURN WITH PAT IN A
FEW DAYS TO EVALUATE
THE MATERIAL FROM HOLE
ONE AND HOLE TWO.

WEATHER: CLOUDY, RAINY, COLD.

8:00 AM START

12:15 TO END OF ROAD
WHERE TRUCK IS PARKED

8:00 pm IN WHITEHORSE

REGULATOR ON THE NODWELL
NOT FUNCTIONING CORRECTLY

(27)

date WEDNESDAY Sept 15/93 page

LEFT TOWN AT 1:30 PM. THE REGULATOR FOR THE NODWELL WHICH WAS PROMISED AND CONFIRMED TO BE ON THE MORNING FLIGHT INTO WHITEHORSE WAS OF COURSE, NOT ON THE PLANE.

PAT WILL BE HELPING FOR THE DURATION AND WE PLAN TO SPEND OUR TIME SLICING SOME OF THE MATERIAL FROM THE PROSPECTING SHAFTS AND PERHAPS SOME RECONNAISSANCE ON NEARBY CREEKS.

WE GET AS FAR AS THE END OF THE FREE GOLD ROAD ON THIS DAY AND WILL MAKE THE FINAL LEG TOMORROW.

WE STAY AT MY 8x10' SHACK AT THE END OF THE ROAD. SOMEONE HAS STOLEN THE PROPANE STOVE!

No limit how low some people will go!!
WEATHER IS GOOD, LITTLE CLOUDS,
SOME SUN. 60°F

ballato

(28)

date THURSDAY Sept 16/93 page

PUT ON THE OLD REGULATOR ON THE NODWELL AND FILE THE POINTS SO THAT IT WORKS INTERMITTENTLY. WE ARE CARRYING TWO EXTRA BATTERIES FOR THE TRIP IN CASE THE REGULATOR MALFUNCTIONS.

THE REGULATOR WORKS O.K. BUT 3 1/2 MILES FROM CAMP, THE STEERING MECHANISM BREAKS AND WE ARE FORCED TO WALK THROUGH THE BOG TO CAMP. ARRIVE ABOUT 4:00 PM AND I MAKE A TRIP BACK TO THE NODWELL ON THE TRIKE TO BRING BACK SOME FOOD AND SOME OF PAT'S THINGS.

WHILE AT THE NODWELL, I ASSESS THE DAMAGE AND TRY TO FIGURE A FIX. THERE ARE TWO MORE MOUNTING HOLES ON THE DIFFERENTIAL FOR THE STEERING MECHANISM.

ballato

IN A LESS THAN PERFECT LOCATION, BUT HOPEFULLY THE MACHINE CAN BE FIXED TEMPORARILY.

RETURN TO CAMP BEFORE DARK WITH FOOD AND GEAR FOR THE NIGHT.

WEATHER IS AGAIN A NICE FALL DAY.

RETURN TO NODWELL AND IN SHORT ORDER HAVE IT MOBILE AND BACK IN CAMP

WE BUILD A SLEWIE BOX, ONE FOOT WIDE AND SIX FEET LONG. THE RIFFLES ARE EXPANDED METAL OVER NORMAL MATTING.

TO SCREEN THE MATERIAL FOR THE SLEWIE, WE DRILL HOLES IN THE BOTTOM OF PLASTIC OIL PAILS (1/2") AFTER LOADING THE NODWELL WITH GEAR NEEDED FOR EVALUATION, WE MOVE THE NODWELL UP THE CREEK TO THE PROSPECTING SITE AND UNLOAD.

WEATHER IS TERRIBLE, COLD WINDY, SOME SNOW AND RAIN HIGH 40°F

(30)

date SATURDAY SEPT 18/93 page

WE SPEND ALL DAY SCREENING THE MATERIAL ~~SET~~ SET ASIDE FROM HOLE 1 TO BE EVALUATED. IT SEEMS THIS IS TOUGHER WORK THAN DIGGING THE HOLES.

WE END UP WITH JUST ABOUT $\frac{3}{4}$ YARD OF MATERIAL FOR PROCESSING.

A PAIL WITH $\frac{1}{2}$ " HOLES IS PLACED INSIDE ANOTHER BUCKET FILLED WITH WATER. MATERIAL IS SHOULED INTO THE TOP PAIL AND THEN WASHED THROUGH TO THE BOTTOM BUCKET. ONLY $\frac{1}{2}$ MINUS MATERIAL FALLS THROUGH. SLOW GOING BUT IT WORKS.

SNOW GOES AND OVERALL NOT A BAD DAY.

Bulfinch

(31)

date SUNDAY SEPT 19/93 page

WE SET UP THE SLUICE BOX, GENERATOR AND 2" SUBMERSIBLE PUMP. THERE IS NO SHORTAGE OF WATER AT THIS SITE. THE PUMP GOES DOWN SHAFT 1 AND IT PUMPS CONTINUOUSLY FROM THIS HOLE WITHOUT PUMPING IT DRY.

IT TAKES SEVERAL HOURS TO FEED THE SCREENED MATERIAL THROUGH THE SLUICE AND ONCE FINISHED, WE DISMANTLE THE BOX AND WASH THE MATTING IN A PAIL OF WATER.

THERE IS ABOUT A QUART OF MATERIAL READY TO BE CLEANED UP FROM OUT OF THE SLUICE. WE RETURN TO CAMP AND WILL CLEAN THE MATERIAL TOMORROW.
PARTLY SUNNY. HIGH 55°F

Bulfinch

date MONDAY Sept 20/93 page

THE MATERIAL FROM THE CLEAN UP IS FIRST PANNED IN SMALL AMOUNTS TO REMOVE THE LIGHTER MATERIAL. IT IS THEN DRIED AND AGAIN IN SMALL QUANTITIES, THE MAGNETIC MATERIAL IS REMOVED USING A SMALL HORSE SHOE MAGNETE COVERED IN PLASTIC.

THE MATERIAL IS AGAIN PANNED THEN DRIED TILL THERE WAS $\frac{1}{4}$ CUP OR SO LEFT.

WITH TWEEZERS TO REMOVE THE LARGER MATERIAL AND BY CAREFULLY BLOWING THE FINER STUFF AWAY A SMALL QUANTITY OF GOLD IS RECOVERED.

400mg. By THE LOOK OF WHAT WE HAVE, ITS MARGINAL AT BEST AND THIS HOLE PANNED THE BEST OF

date

page

THE FOUR HOLES DUG. WE WILL DO THE MATERIAL SAVED FROM HOLE 2 JUST TO BE SURE BUT IT SURE LOOKS DISAPPOINTING.

(33)

date TUESDAY SEPT 21/93 page

SPENT THE DAY SCREENING
THE MATERIAL I SAVED FOR
PROCESSING FROM HOLE 2.
AGAIN THERE IS APPROX.
3/4 YD OF MATERIAL TO
BE SLUICED.

CLOUDY IN MORNING BUT
CLEARED IN AFTERNOON 60°F

(34)

date WEDNESDAY 22/93 page

PROCESSED MATERIAL
THROUGH THE SLUICE BOX
AND CLEANED UP THE
MATTING BY EARLY AFTER-
NOON.

WENT BACK TO CAMP
AFTER PACKING UP AND
STARTED TO CLEAN THE
MATERIAL.

VERY POOR RESULTS AND
THE BEST GUESS IS
APPROX 100 MG.

TEMPERATURE WENT TO A
LOW OF 15°F OVERNIGHT
BUT RECOVERED TO 45°F
DURING THE DAY.

DECIDE TO CHECK OUT A NEARBY CREEK WHICH I'VE BEEN INTERESTED IN FOR SOME TIME.

THE COUNTRY ROCK IS A QUARTZ PORPHYRY. WALK BOTH SIDES OF THE VALLEY BANGING ROCKS BUT FOUND LITTLE MINERALIZATION.

SPENT SEVERAL HOUR DIGGING IN THE CREEK VALLEY BOTTOM TRYING TO PAN SOMETHING INTERESTING BUT CREEK IS A BED IS ALSO THAWED AND COULD NOT GET DOWN MORE THAN 2 FEET ANYWHERE. NOTHING OF INTEREST IN ANY PAN.

DECIDED TO TERMINATE THIS PROJECT AND RETURN TO TOWN THE ENTIRE PROJECT IS A VERY DISAPPOINTING EXERCISE ESPECIALLY AFTER HAVING HELD HIGH HOPES

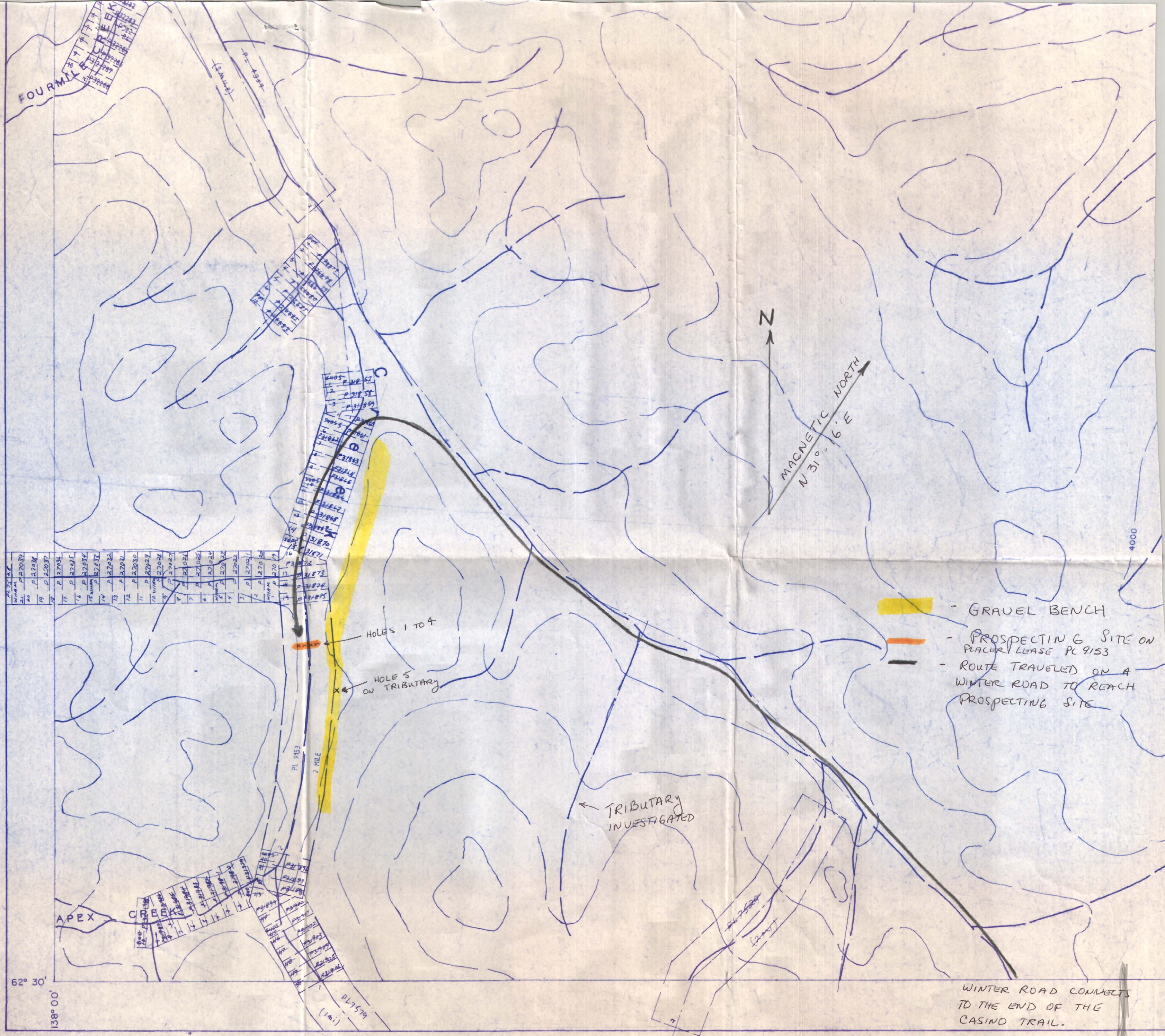
FOR THIS CREEK SINCE 1987. IT MAKES YOU WONDER WHAT ALL THE FUSS WAS ABOUT HERE WHEN THE LAST GENERATION OF PROSPECTORS WERE IN ~~HERE~~. HAYES CREEK.

36

date FRIDAY SEPT 24TH page

LEAVE CAMP RATHER
LATE (11 00 AM) BUT
THE WEATHER IS COOL
AND THERE IS NO PROBLEM
WITH THE MDDWELL.

REACH THE TRUCK BY
2:30 PM AND GET TO
WHITEHORSE BY 8:30 PM



25	26	27	28	29	30	31	32	33	34	35	36	37	38	39	40	41	42	43	44	45	46	47	48	49	50	51	52	53	54	55	56	57	58	59	60	61	62	63	64	65	66	67	68	69	70	71	72	73	74	75	76	77	78	79	80	81	82	83	84	85	86	87	88	89	90	91	92	93	94	95	96	97	98	99	100																								
1	2	3	4	5	6	7	8	9	10	11	12	13	14	15	16	17	18	19	20	21	22	23	24	25	26	27	28	29	30	31	32	33	34	35	36	37	38	39	40	41	42	43	44	45	46	47	48	49	50	51	52	53	54	55	56	57	58	59	60	61	62	63	64	65	66	67	68	69	70	71	72	73	74	75	76	77	78	79	80	81	82	83	84	85	86	87	88	89	90	91	92	93	94	95	96	97	98	99	100

- GRAVEL BENCH
- PROSPECTING SITE ON PLACER LEASE PL 9153
- ROUTE TRAVELED ON A WINTER ROAD TO REACH PROSPECTING SITE

WINTER ROAD CONNECTS TO THE END OF THE CASINO TRAIL.



to r



REMOVE FROM PAGE.

(IM)



to next pag



(Im)

REMOVE FROM
PAGE.