

93-11b

YEIP  
93-111  
1993

Outline  
for  
Grass Roots Prospecting

Submitted by:  
Reid Haines

Area #1

Map #115-0-10 &  
115-0-11

Steele Creek

Area #2

Map #115-0-11

Bismark Creek

Area #3

Map #115-0-11

Ruby Creek &  
McKinnon Creek and Area

Area #4

Map #115-0-11

Farm Creek  
(not named on maps)

Area #5

Map #115-0-10 &  
115-0-11

Letf Limit Creek  
(not named on maps)

Area #1

Steele Creek

Map #115-0-10 & 115-0-11

Pages 1-13

- Prospecting on 13 pup.
- Found old timers pit, cleaned out and tested. Finding small quantities of gold.
- Staked creek bottom because of finds.
- Found hard rock shaft in solid quartz. No values.
- Prospected on higher benches of Steele Creek.
- Found conglomerates with small quantities of gold.
- Rim holes to determine gravels and bedrock.
- Conglomerate for assays.

Area #2

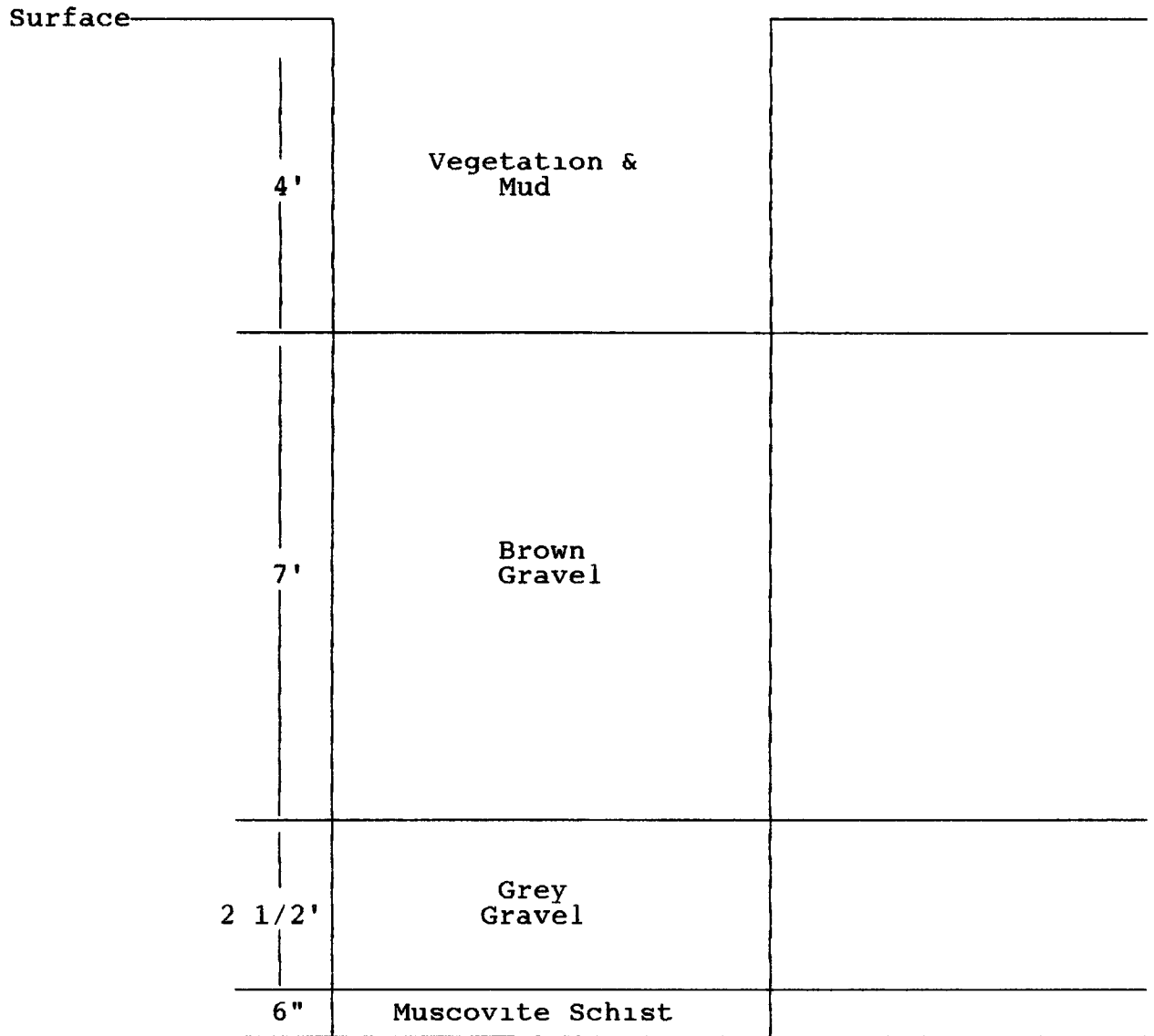
Bismark Creek and Area

Map #115-0-11

Pages 13-33

- Prospecting done on benches on and around Bismark Creek.
  
- Shafting done on bench rims to determine gravel/conglomerate, type of bedrock and possible values.
  
- Higher benches prove to be conglomerate overlying gneiss bedrock.
  
- Lower benches proved to have gravels overlying schist bedrock.
  
- Shafting done on lower bench to prove up gold values, 2 shafts completed down into bedrock.
  
- Shaft #1 profile (see next page).

SHAFT PROFILE #1



\* Pay seems to be mostly on bedrock contact. Bedrock still sloping down into bench.

SHAFT PROFILE #2

Surface		
7'	Vegetation & Mud	
5'	Brown Gravel	Panned out 1/2 blk sand and 1/2 brown sand concentrates with fine gold.
4'	Grey Gravel	Panned out heavy concentrates of blk sand, garnets wolframite
1'	Muscovite & Schist	Gold heaviest on bedrock contact.

- Bedrock still slopes into bench.

\* Benches to be staked later from what was found.

Area # 3

Ruby Creek, McKinnon Creek Area  
around Haystack Mountain

Map #115-0-11

Pages 16-23

- Prospected the high benches over top from Kitchener Creek (Bismark Creek).
- Followed conglomerate benches around Haystack area.
- Most Hostrock is a Muscovite and/or granite gneiss.
- Panned all the tributaries coming off of Haystack, blk send in all of them - the odd fine color .
- conglomerate for assays.

Area #4

Farm Creek (not named on maps)

Map # 155-0-11

Pages 34-37

- Prospected the creek and benches of the area.
- Rim holes done on the benches.
- Dug beside creek and panned out fine colors and blk sand.
- Will stake creek from what I have seen.

Area #5

Left Limit Creek (not named on maps)

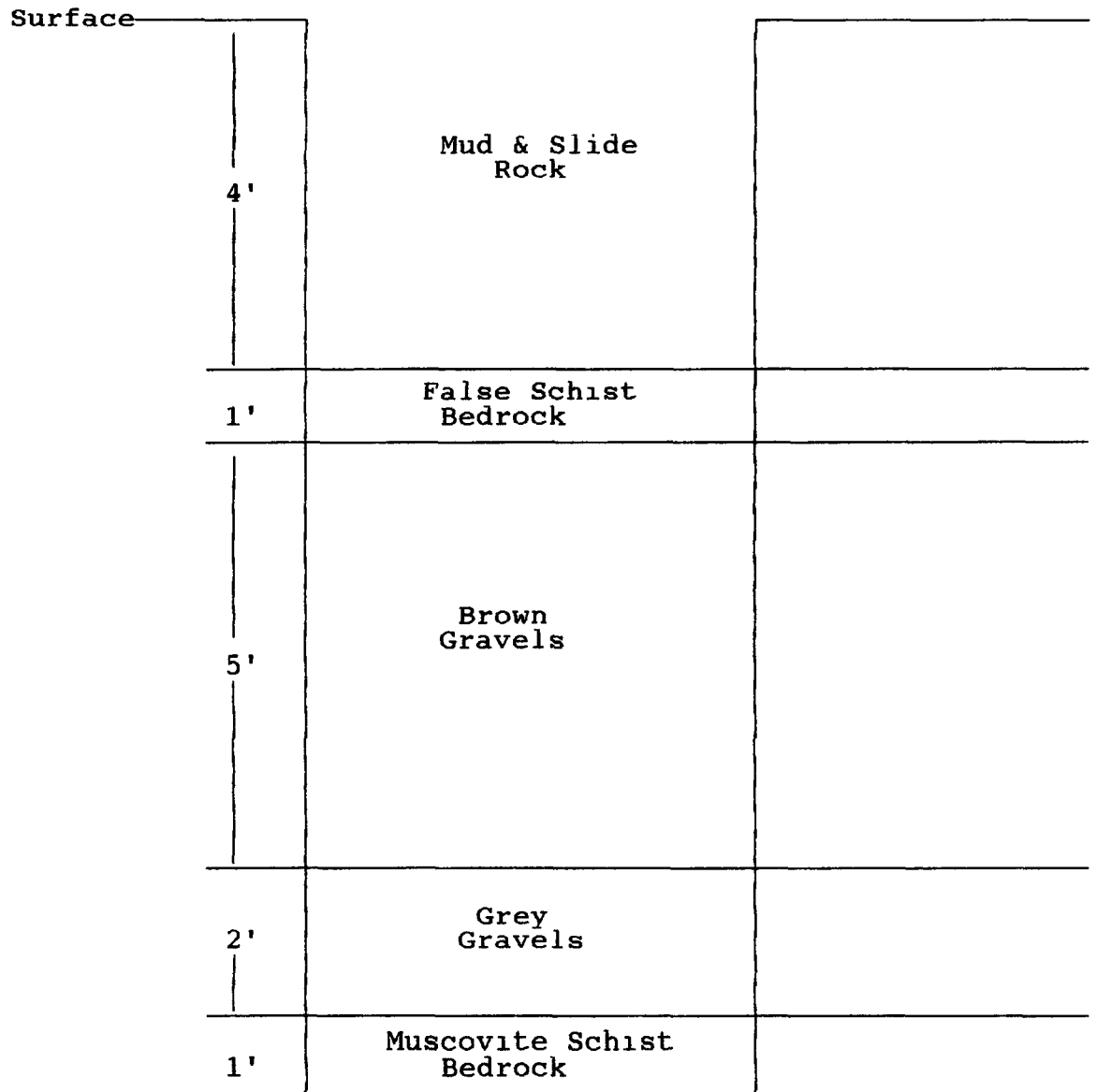
Map #155-0-10 & 115-0-11

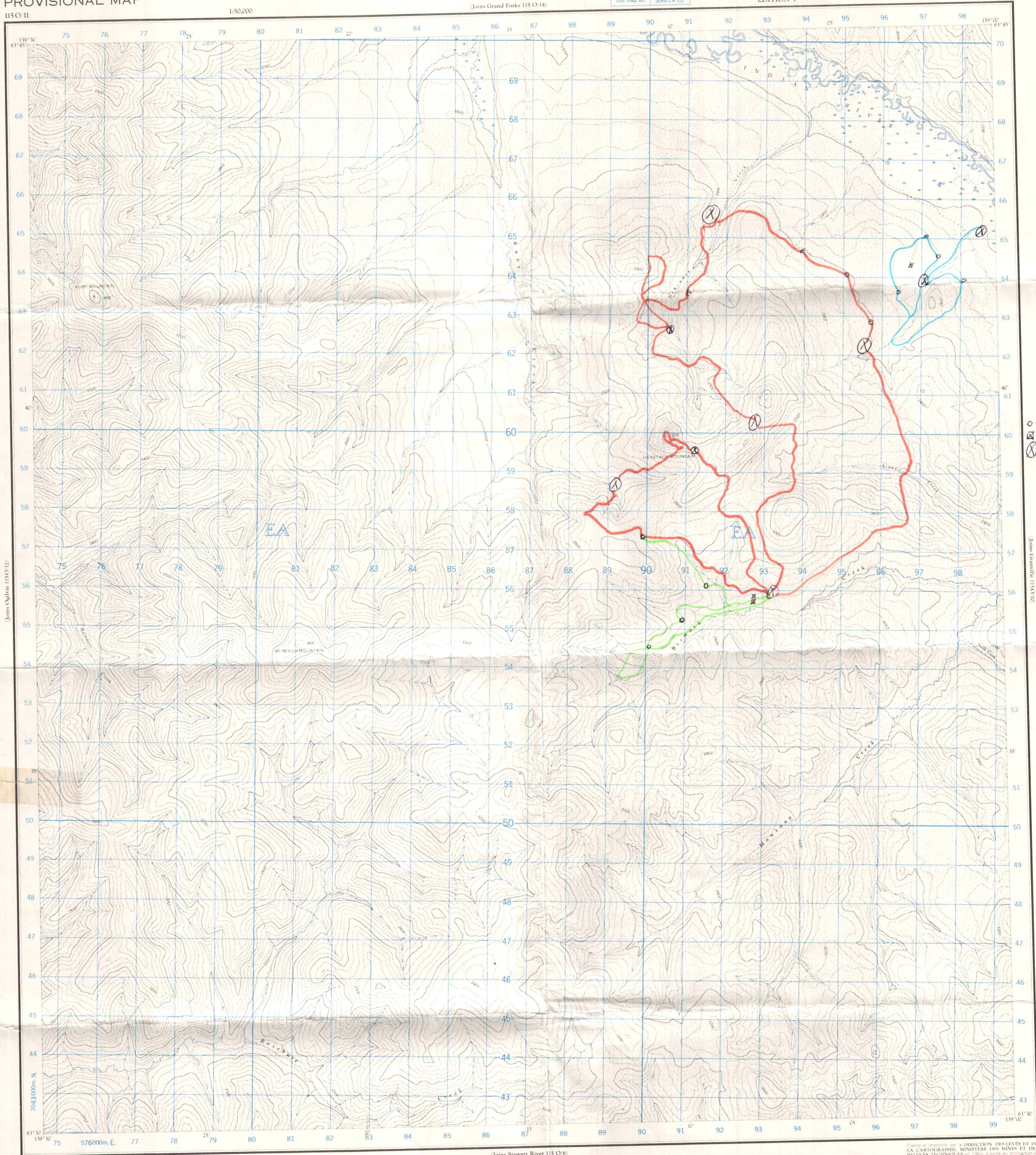
Pages 37-end

- Prospected on Left Limit Creek and benches in the surrounding area.
- Creek panned out fine colors and blk sand.
- Quartz boulders visible in creek.
- Rim holes done on benches from the findings I decided to shaft.
- One shaft done to prove up area.
- Will stake in the future from the results found.



SHAFT PROFILE





O - Rim hole  
X - Shaft  
X - Camp

Joins Ogilvie 115 O/12

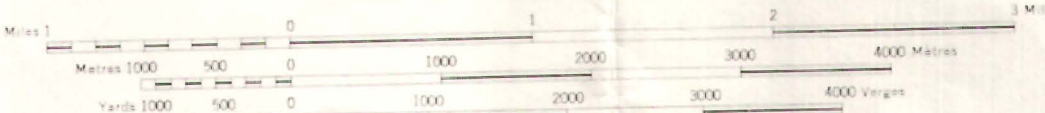
Joins Stewart River 115 O/6

Produced and controlled by THE SURVEYS AND MAPPING BRANCH, DEPARTMENT OF MINES AND TECHNICAL SURVEYS, 1963, from air photographs taken in 1952 and 1954.

(Joins Stewart River 115 O/6)

REINDEER MOUNTAIN  
YUKON TERRITORY

SCALE 1:50,000 ÉCHELLE



CONTOUR INTERVAL 500 FEET  
Elevations in Feet above Mean Sea Level  
North American Datum 1927  
Transverse Mercator Projection

ÉQUIVALENCES DES COURBES: 100 PIEDS  
Élévations en pieds au-dessus du niveau moyen de la mer  
Réseau géodésique nord-américain unifié (1927)  
Projection transverse Méridienne

MAGNETIC DECLINATION 31° 31' EAST  
AT CENTRE OF MAP 1963  
Annual change (decreasing) 3.5'

DÉCLINAISON MAGNÉTIQUE AU CENTRE  
DE LA FEUILLE EN 1963: 31° 31' EST  
Variation annuelle (diminuant): 3.5'

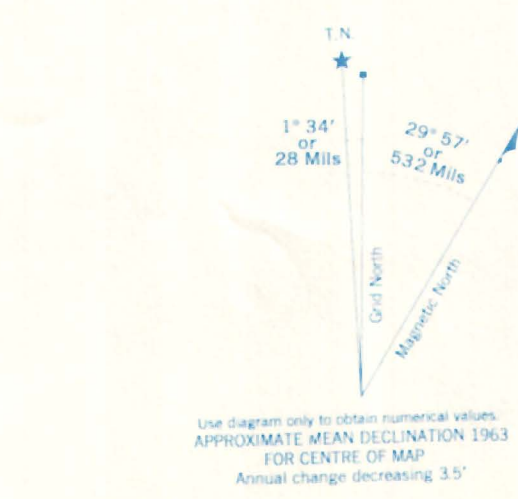
Some names on this map are not yet official.  
Corrections or additions are invited by the Surveys and Mapping Branch.

Certains noms inscrits sur cette carte ne sont pas encore officiels.  
La Direction des levés et de la cartographie saurait gré au public de lui signaler corrections et additions.



Building	Édifice	Bar	Grange
Spire	Épave	Post Office	Barrage
Church	Église	Canal	Canal
Lighthouse	Phare	Power	Power
Road with bridge	Roadway	Water	Water
Road without bridge	Roadway	Marsh	Marsh
Marsh	Marsh	Contour	Contour
Depression contour	Contour		

Carte de référence sur la DIRECTION DES LEVÉS ET DE LA CARTOGRAPHIE, MINISTÈRE DES MINES ET DES RELEVÉS TECHNIQUES, 1963, d'après les photographies aériennes prises en 1952 et 1954.



GRID ZONE DESIGNATION	100,000 M SQUARE IDENTIFICATION
7V	EA

TO OBTAIN A REFERENCE TO NEAREST 100 METERS  
(EXAMPLE: STREAM JUNCTION)

EASTING: Read number on grid line immediately to left of point  
Transfer letters of a square from top line to right of point.  
NORTHING: Read number on grid line immediately below point  
Transfer letters of a square from top line to right of point.

MILITARY GRID REFERENCE: 859586

Nearest similar grid reference 100,000 metres (about 32 miles)

ONE THOUSAND METRE  
UNIVERSAL TRANSVERSE MERCATOR GRID  
ZONE 7

NATIONAL TOPOGRAPHIC SYSTEM  
SYSTÈME DE RÉFÉRENCE CARTOGRAPHIQUE NATIONAL

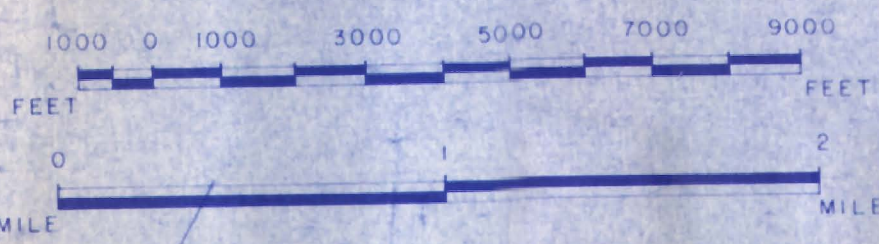
115 O/11  
EDITION 1

# 115-0-1 PLACER

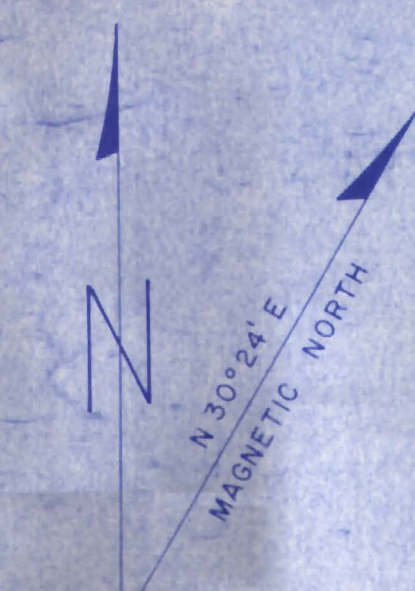
LATITUDE 63°30' TO 63°45'  
LONGITUDE 139°00' TO 139°30'

CANADA  
DEPARTMENT OF NORTHERN AFFAIRS AND NATIONAL RESOURCES  
NORTHERN ADMINISTRATION AND LANDS BRANCH  
MINING AND LANDS DIVISION

SCALE 1:31,680



ISSUED UNDER THE AUTHORITY OF THE MINISTER  
OF  
NORTHERN AFFAIRS AND NATIONAL RESOURCES



Note: Entry on certain lands is withdrawn from staking in cross-hatched areas to facilitate the settlement of Native Land Claims without prejudice to Existing Surface and Subsurface Rights.

115-0-13	115-0-14	115-0-15
115-0-12	115-0-11	115-0-10
115-0-5	115-0-6	115-0-7

**NOTICE**

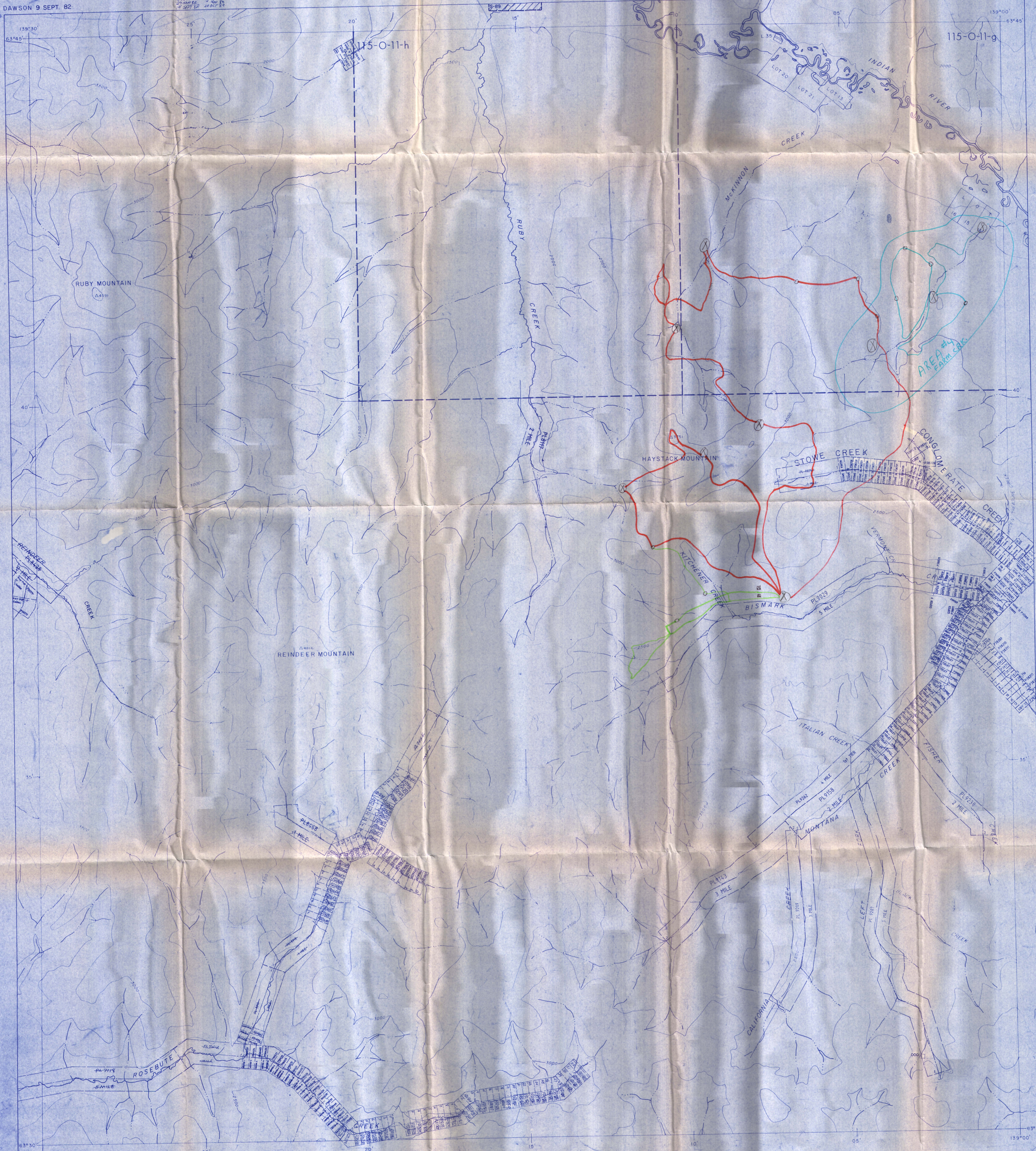
THIS MAP IS ISSUED AS A PRELIMINARY GUIDE FOR WHICH THE DEPARTMENT OF INDIAN AFFAIRS AND NORTHERN DEVELOPMENT WILL ACCEPT NO RESPONSIBILITY FOR ANY ERRORS, INACCURACIES OR OMISSIONS WHATSOEVER.

TOPOGRAPHY COMPILED FROM 1:50,000 NATIONAL TOPOGRAPHIC SERIES.  
CONTOUR INTERVAL 500 FEET  
SURVEY INFORMATION COMPILED FROM LEGAL SURVEYS, BY DRAFTING SERVICES 1982.

1 NOV 91	10 OCT 91
2 MAY 91	11 MAY 91
3 MAY 91	12 MAY 91
4 MAY 91	13 MAY 91
5 MAY 91	14 MAY 91
6 MAY 91	15 MAY 91
7 MAY 91	16 MAY 91
8 MAY 91	17 MAY 91
9 MAY 91	18 MAY 91
10 MAY 91	19 MAY 91
11 MAY 91	20 MAY 91
12 MAY 91	21 MAY 91
13 MAY 91	22 MAY 91
14 MAY 91	23 MAY 91
15 MAY 91	24 MAY 91
16 MAY 91	25 MAY 91
17 MAY 91	26 MAY 91
18 MAY 91	27 MAY 91
19 MAY 91	28 MAY 91
20 MAY 91	29 MAY 91
21 MAY 91	30 MAY 91
22 MAY 91	31 MAY 91
23 MAY 91	1 JUN 91
24 MAY 91	2 JUN 91
25 MAY 91	3 JUN 91
26 MAY 91	4 JUN 91
27 MAY 91	5 JUN 91
28 MAY 91	6 JUN 91
29 MAY 91	7 JUN 91
30 MAY 91	8 JUN 91
31 MAY 91	9 JUN 91

DAWSON 9 SEPT. 82

NOTE: FOR QUARTZ SEE 115-0-11  
FOR PLACER WITHIN DASHED LINE SEE 1:10 000



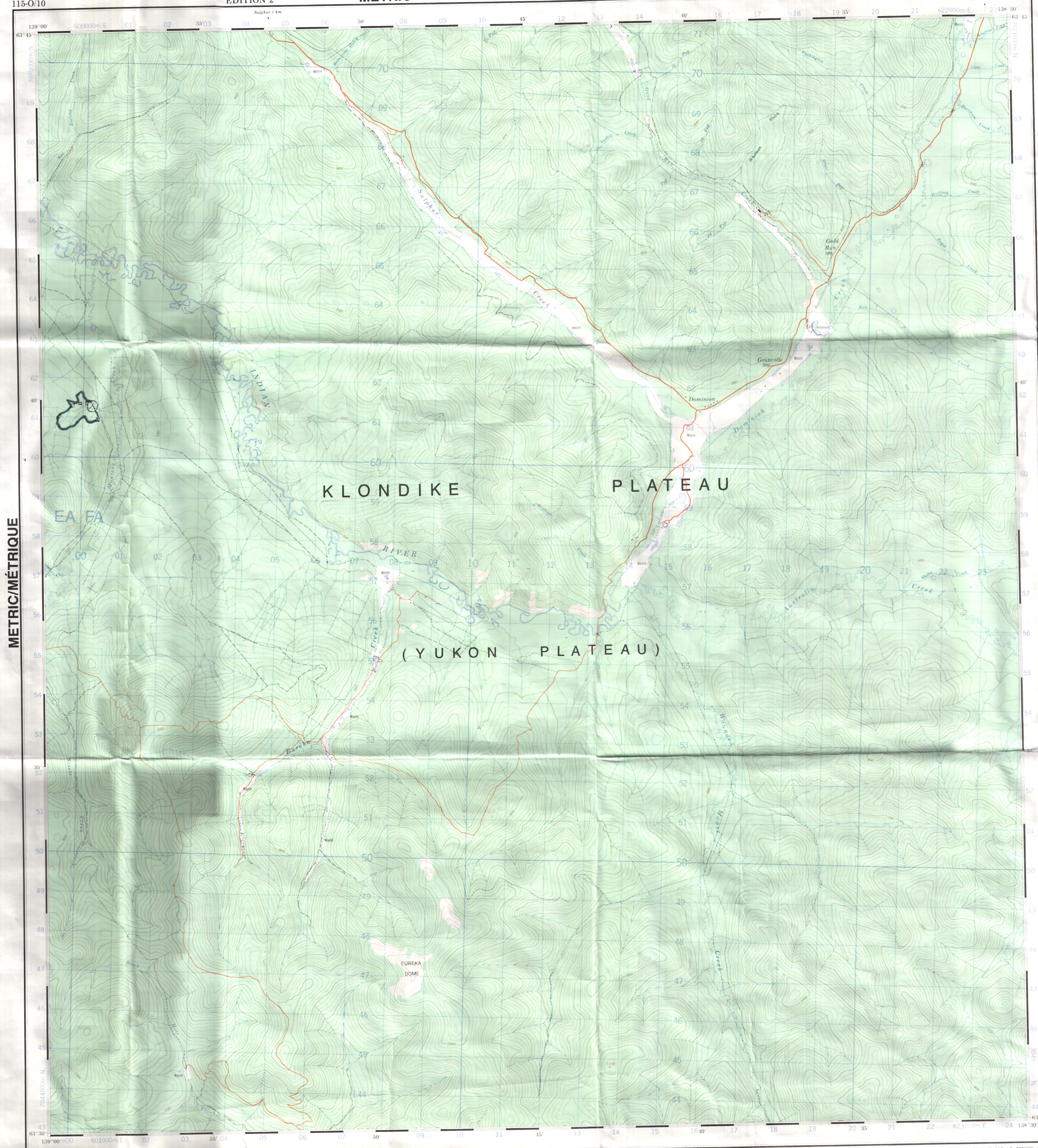
- - Rim holes
- ☒ - Shafts
- ⊗ - Camp

YMP  
93-111

Military users:  
refer to this map as:  
Référence de cette carte  
pour usage militaire:

SERIE A 722 SERIE  
MAP 115-O/10 CARTE  
ÉDITION 2 ÉDITION

Digit  
Mailing  
Cartographie  
numérique



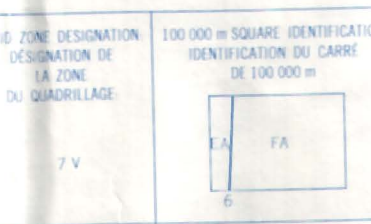
o - Rim holes  
x - Shaft  
⊗ - Camp

METRIC/MÉTRIQUE

METRIC/MÉTRIQUE

Use diagram only to obtain numerical values  
APPROXIMATE MEAN DECLINATION 1983  
FOR CENTRE OF MAP  
Annual change decreasing 10.8"

ONE THOUSAND METRE  
UNIVERSAL TRANSVERSE MERCATOR GRID  
ZONE 7  
QUADRANGLE UNIVERSAL TRANSVERSE DE MERCATOR  
DE MILLE MÈTRES



EXAMPLE OF METHOD USED  
TO OBTAIN REFERENCE TO NEAREST 100 METRES  
FROM GRID COORDINATES



REFERENCE POINT CHURCH - EGLISE

POINT NO. REPÈRE	CHURCH - EGLISE	GRID COORDINATES
1	St. Mary's	97 51
2	St. John's	97 52
3	St. Peter's	97 53
4	St. Paul's	97 54
5	St. James	97 55
6	St. George	97 56
7	St. Andrew	97 57
8	St. Nicholas	97 58
9	St. Basil	97 59
10	St. Constantine	97 60

UTM	UTM	UTM
115 014	115 015	115 016
115 011	115 010	115 009
115 008	115 007	115 006

PRODUCED BY THE CANADA CENTRE FOR MAPPING  
DEPARTMENT OF ENERGY, MINES AND RESOURCES  
INFORMATION CURRENT AS OF 1989 PUBLISHED IN 1993  
COPIES MAY BE OBTAINED FROM THE CANADA MAP OFFICE  
DEPARTMENT OF ENERGY, MINES AND RESOURCES  
OTTAWA, OR YOUR NEAREST MAP DEALER.

Roads:  
ice or stabilized surface, all weather  
loose surface, dry weather  
unclassified road or street  
railroad  
trail, cut line or passage

Routes:  
arterial, agreement route, season  
de gravel, temps sec  
route non classée au feu  
de terre  
sentier, passage au passage

FOR COMPLETE REFERENCE SEE REVERSE SIDE

GRANVILLE  
YUKON TERRITORY TERRITOIRE DU YUKON

Scale 1:50 000 Échelle

Miles 1 0 2 3 Miles  
Metres 1000 0 1000 2000 3000 4000 Mètres

CONVERSION SCALE FOR ELEVATIONS  
Metres 30 20 10 0 100 200 300 400 500 600 700 800 900 1000 Pieds

ÉCHELLE DE CONVERSION DES ALTITUDES  
Mètres 30 20 10 0 100 200 300 400 500 600 700 800 900 1000 Pieds

CONTOUR INTERVAL 20 METRES  
Elevations in Metres above Mean Sea Level  
North American Datum 1983  
Transverse Mercator Projection

ÉTABLI PAR LE CENTRE CANADIEN DE CARTOGRAPHIE  
MINISTÈRE DE L'ÉNERGIE, DES MINES ET DES RESSOURCES  
RÉFÉRENCE À LA CARTE 115-O/10  
Ces cartes sont en vente au BUREAU DES CARTES DU  
MINISTÈRE DE L'ÉNERGIE, DES MINES ET DES RESSOURCES  
OTTAWA, OU CHEZ LE VENDEUR LE PLUS PRÈS  
© 1993 SA MAJESTÉ LA REINE DU CHEF DU CANADA  
MINISTÈRE DE L'ÉNERGIE, DES MINES ET DES RESSOURCES

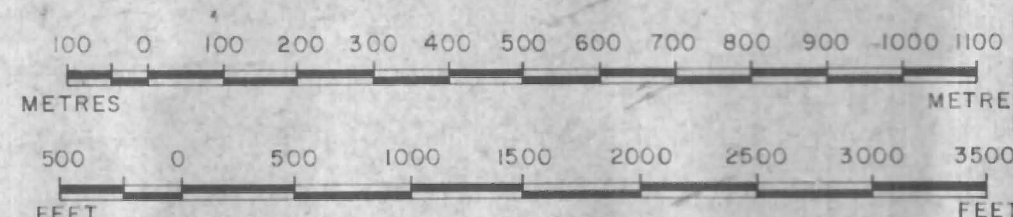
# PLACER SHEET

## 115-0-10d

LATITUDE 63° 35' TO 63° 40'  
LONGITUDE 138° 50' TO 139° 00'

CANADA  
DEPARTMENT OF NORTHERN AFFAIRS AND NATIONAL RESOURCES  
NORTHERN ADMINISTRATION AND LANDS BRANCH  
MINING AND LANDS DIVISION

SCALE 1:10,000



ISSUED UNDER THE AUTHORITY OF THE MINISTER  
OF  
NORTHERN AFFAIRS AND NATIONAL RESOURCES



115-0-11g	115-0-10i	115-0-10h
115-0-11f	115-0-10d	115-0-10e
115-0-11a	115-0-10c	115-0-10b

### NOTICE

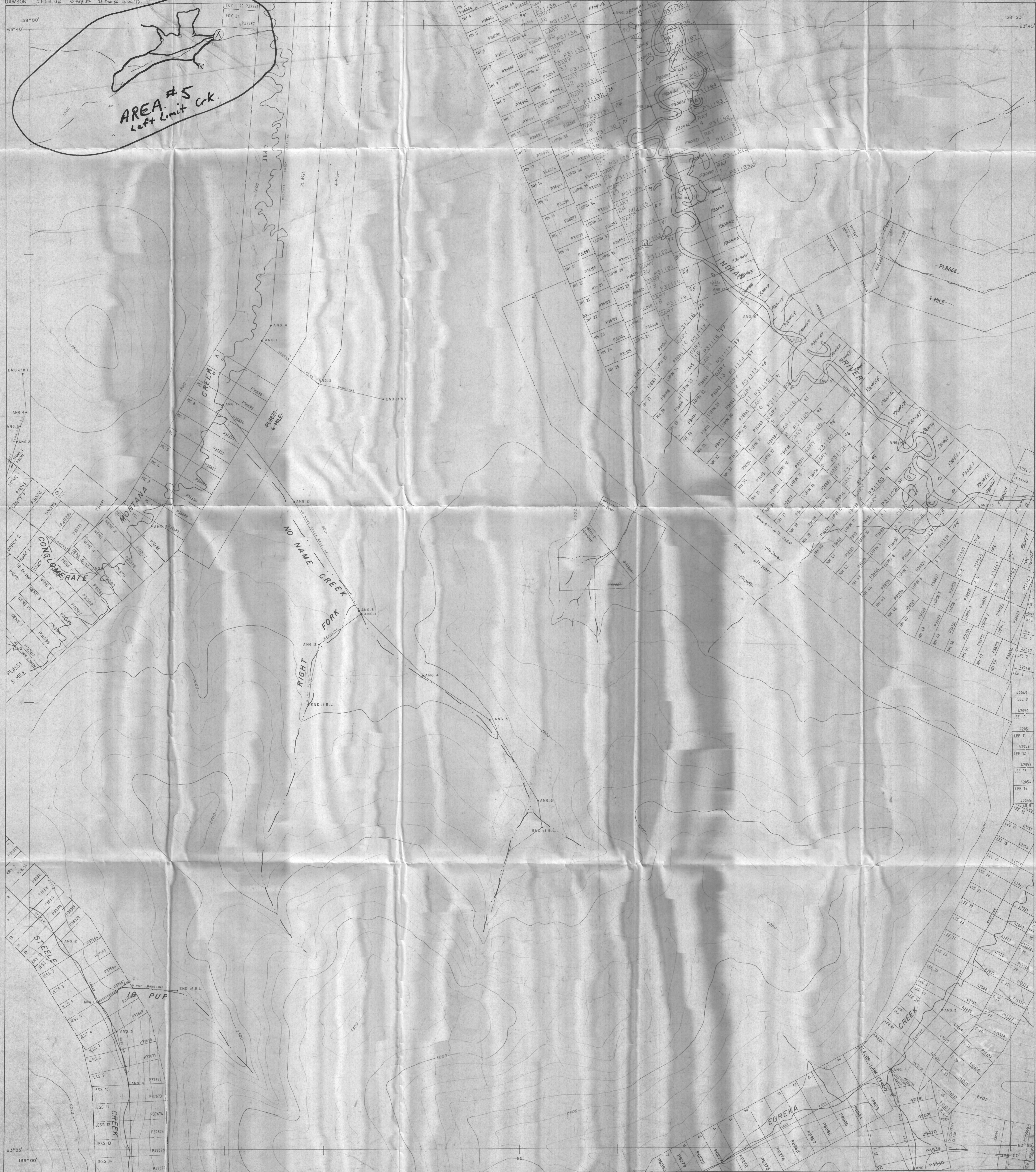
THIS MAP IS ISSUED AS A PRELIMINARY GUIDE FOR WHICH THE DEPARTMENT OF INDIAN AFFAIRS AND NORTHERN DEVELOPMENT WILL ACCEPT NO RESPONSIBILITY FOR ANY ERRORS, INACCURACIES OR OMISSIONS WHATSOEVER.

- - Rim hole
- ⊠ - Shaft
- ⊗ - Camp

TOPOGRAPHY COMPILED FROM 1:50,000 NATIONAL TOPOGRAPHIC SERIES  
CONTOUR INTERVAL 100 FEET  
SURVEY INFORMATION COMPILED FROM LEGAL SURVEYS, BY DRAFTING SERVICES 1980

15 JULY 82  
23 JUNE 82  
5 FEB 82

NOTE FOR QUARTZ CLAIMS SEE 115-0-10



GRASS ROOTS

Prospecting

Reid Haines

# INDEX

PAGE	GRASSROOTS PROSPECTING
1	Area #1 - Steele Creek
	Map # 115-0-11, 115-0-10
	Area #2 - Bismark Creek
	Map # 115-0-11
	YMP 93-111



ITEM # 7712

IMPORTED FROM KOREA BY  
BUFFALO EASTCANTRA INC.  
P.O. BOX 10, STATION C.D.N.  
MONTREAL P. Q. H3S 2S3

## Shafting on Left Fork (Montana Crk)

- Nov 3 - Truck into main camp on Steele Crk. with supplies.
- Nov 4 - Took wall tent and supplies up to Left Fork on 4x4. Set up camp, tent up, air tight stove in ect.
- Nov 5 - 4x4 back down to main camp for steamer, loaded on 4x4 and back up to Left Fork camp.
- Nov 6 - Hauled steamer over to the spot where I wanted to shaft. Set up steamer, hauled water to fill steamer. Cut wood for steaming. Started removing vegetation.
- Nov 7 - Removed the rest of the vegetation then squared out shaft. Nice thaw this year, dug down shaft approx 3', to late to start steam. Walked around area for the rest of the day.



Nov 8<sup>6</sup> - Fired up steamer, steamed points down 4'. Started mucking out shaft. Mud down 5' now. Intermixed with slide rock.

Nov 9<sup>7</sup> - Finished mucking out shaft. Down 7' now, mud seems to be alot sandier down on the bottom now. Holed water for steamer and cut more wood.

Nov 10<sup>8</sup> - Started up steamer then steamed points down another 4'. Started mucking out hole. Into sand now.

Nov 11<sup>9</sup> - More mucking out shaft. Sand goes down 2½'. Pans out about ¼ of the concentrate is black sand. No colors. Just starting into the gravel.

Nov 12<sup>10</sup> - Mucking out shaft, into round gravels now. The odd piece of slide rock still mixed in with the gravels. Slide rock appears

to be a gneiss with small crystals of what appears to be augite or possibly a hornblende.

Lots of black sand with garnets, wolframite etc. when panned.

Very hard digging, gravels very compacted. Cleaned out shaft down to frozen gravels. Shaft now 11 ft. deep. Hauled water to steamer.

Nov 13 - Fired up steamer, cut more wood. Steamed points down another 4 ft. Hard going, had to move points twice. Started mucking out.

Nov 14 - More mucking out. Gravels getting courser. Uncovered a boulder  $1\frac{1}{2}$  ft in diameter. Had to fashion a sling to get it out of the hole. Pans are alot nicer now, 5-6 colors pan. Some of the garnets are the size of peas.

Nov 15 - Gravels are course, the blk sand is courser, the colors in the

pan are coarse also. Started to get more angular rocks now. Lots of big rocks packed in with lots of blk sands. Very compact. Colors in every pan, some pans have over ten colors.

Nov 16<sup>14</sup> - Finished mucking out shaft, put all the gravels from the last ft. aside to be tested. Shaft 15' deep now.

Hauled water and fired up steamer, cut more wood. Points only down 3 ft. but it seems pretty solid so I just let them steam out there.

Nov 17<sup>15</sup> - Started mucking out, hit broken up bedrock at 16 ft. Pans out 10-15 colors/pan now. Some fairly coarse colors with lots of garnets, etc. Bedrock appears to be a hornblende gneiss as opposed to a biotite gneiss, because of the way it breaks. Doesn't break cleanly or on a plane. Cleaned off the gravels

right to bedrock and squared off the contacts. Started taking out the bedrock. Very broken up angular pieces, wedged in with concentrate. (Blk sand etc.)

Nov 18 - <sup>16</sup> Finished squaring off the first ft. of bedrock, gold seems to be going down into the bedrock quite away. Very hard compacted digging. From here down I will just put all the rest of the bedrock in a separate pile. Getting some water seeping into the hole, but not too serious.

Nov 19 - <sup>12</sup> Cleaned out the last of the bedrock. There is still some black sand in the cracks but I don't seem to pan out any more colors. The garnets are pretty well gone also. The only way to test the bedrock at this level, would be to take out a yardage test and run thru the test box. There could be coarse gold down this far, but I don't

get any in the pan.

Nov 20 - Panned out alot of the gravel  
<sup>18</sup> bedrock contact. Some nice  
colors, lots of gorgeous garnets  
with lots of different shades of  
red. Some purplish ones also.

Pans out 10-15 colors/pan  
some colors are the size of match  
heads with some weight to them.

Gold weighs up at a gram. /  $\frac{1}{2}$  yd<sup>3</sup>  
which works out to about \$20  
per yard. But this value is from  
concentrated contact by hand. When  
machine mining this average will  
be cut down to at least  $\frac{1}{2}$  the  
found value's.

Unpacked camp, left steamer  
on left Fork, headed back down  
to main camp Steele Crk.

Nov 21 - Truck into town.  
<sup>19</sup>

# Area #1

date

page /

Aug 1 - Loaded truck in Dawson City, headed out to Camp at Montana Crk. Spent the night at base camp (confluence of Steele Crk and Montana Crk)

①

Aug 2 - Loaded Honda 4x4 ATV with gear, then headed up Steele Crk as far as the trail would allow. Packed gear by hand up to the middle of 13 P.p. Set up camp. Wandered around for the rest of the day in the immediate area. Found where some old timers had taken a face off of one of the banks. They appeared to have moved alot of dirt, as the face was about 20' long.

②

Aug 3 - Went back to the oldtimers pit. Pulled moss back, then dug out the area. They had dug

③

an area off into the face of a bedrock reef. Panned a few colors in every pan. Dug the rest of the pit off. Piled gravel/bedrock contact to the side for a test.

Aug 4 - Started out up the pup checking for old timers workings. Didn't find anymore but I made it to the top of the crk. Low saddle goes thru into upper Black Hills. Climbed the highest point between the 2 crks. Spotted more high benches on the same levels that go down both crks. Needs more looking into. Headed back down to camp.

Aug 5 - Walked up a ridge behind camp, found an old-timers cabin and cache. Checked around the

(5)

area. Then followed the ridge up the hill and found where the old-timers had done a hard rock shaft. Dug the top area off, it appears to be solid quartz. The opening is 5' x 4" right on the ridge. I took some of the fine quartz and crushed as best I could then packed a pan full down to the creek to pan out. Nothing. Went back up to check further. Cleaned out shaft down about 4'.

Aug 6 - Went back up the ridge to the hard rock shaft. Dug out another 5', still seems to be solid quartz. No visible secondary mineralization, no Malachite or any other minerals to indicate copper or gold or anything for that matter. Not even any galena or any iron stain over. Don't.



Think the guy knew what he was doing. Took some sample's from the bottom to be assayed.

Walked around the ridge and over to one of the benches I had seen from the top of the saddle. It flattens out alot and seems bigger than it at first looked. One outcrop appears to be a Chloride gneiss.

Aug 7 - Went back up to the higher bench, dug a hole on the rim. Hit frost at 2', mud so far with intermixed flat host rock which appears to be a gneiss. Started another two holes farther in on the bench. One outcrop appears to be a muscovite gneiss with biotite streaks that have a greenish color to them.\*

(7)

\* - Probably explains why I thought a Chloride Gneiss

Aug 8 Back up to the upper benches. There are 3 different bench heights going down Steele Crk. The highest bench, having the most time to erode, is the most destroyed, though in spots there are still big flat areas still in place. The middle height benching has the biggest area, while the low bench is narrow and cut by the existing stream valley.

While climbing up to the top bench, I crossed a slide where I found a piece of conglomerate mixed in with the host rock. Checked around and found a few more pieces of sandstone. Walked up to the top of the slide and dug a hole on the rim of the bench. 1 ft of dirt covers 1 ft. of gravel then bedrock

rim. Gravels are mostly  
slide rock intermixed with  
round rock, sandstone and  
chunks of conglomerate. Packed  
a pan ~~g~~ down at the end  
of the day. A small bit of  
blk sand but no colors.

Aug 9 - Back up to the upper bench  
and started digging more holes.  
Got down anywhere from 1 ft  
down to  $2\frac{1}{2}$  ft. Made them  
big so that I would get  
maximum thaw because right  
now I couldn't see bringing a  
steamer up here without determining  
some sort of value first.

Dug 4 holes in different  
spots, while digging one hole  
on the down stream side of  
the bench, I noticed 3 other  
spots down stream on Stake  
Crk where the high bench  
is still in place.

Aug 10 Moved camp from 13 pups down onto Steele Crk at the Confluence of Box (Discovery) Crk. Took 4x4 back down to main camp for supplies

(10)

Aug 11 Loaded supplies onto 4x4 and headed back to Camp on Steele Crk. Walked around on the middle bench for the rest of the day. The bench is bigger than I thought at first, most of it except the rim is still unstaked, but without having the main crk staked in my name, I don't think its worth staking. Following the bench, I found where it gets cut by the crk. In the crk itself I noticed big round quartz boulders that start appearing where the bench is cut.

(11)

Aug 12 Followed the middle bench all the way down Steele Crk. Every where that it gets cut by the crk, there appears to be more big quartz rocks than in spots where the bench is in place. At all spots where it gets cut I was able to dig right by the crk and get colors in my pan.

Aug 13 Headed back up to the upper bench on left limit of Steele Crk valley. Once on the bench it appeared bigger than I at first thought. Approx. 1 mi long by  $\frac{1}{2}$  mi wide. It seems like it will get deep once into the bench. Did 3 Rim holes, two spots are a greenish muscovite gneiss mixed with what appears to be a biotite gneiss which probably gives it the green color. The 3rd hole is a granitic gneiss.

or a diorite, I'm not sure which.

Aug 14 - Back up to the top bench. Started a few other holes, but couldn't get down very far because of frost. The second hole I started had some sandstone mixed in with the top stuff. So I know I'm on the right track for the conglomerates. At this point on Steele crk, the top bench is all on the left limit. The middle bench seems to take up all the room on the right limit, to be cut by discovery pup then continue on down the right limit of Steele.

Aug 15 - Went up to 13 pup and staked a Co-disc. Also panned a lot of pans from the dirt I had piled up from the old-timers cut.

- Aug 16 Unpacked camp and started heading back to base camp. I stopped along the way where I thought the saddle between Steele Crk and No-Name Crk was the same height as the upper benches. Dug down on a spot where water had cut. Started turning up sandstone and pieces of conglomerate with round gravel right from surface.
- (16)
- Aug 17 Town for supplies and Record Co-Disc. on 13 pp.
- (17)
- Aug 18 Returned from town. Unloaded supplies.
- Aug 19 Grabbed a pick, bar and shovel, jumped on the 4x4 and went back to the hole I had started the other day on the saddle between Steele Crk and No-Name. The top layer.
- (18)

was dirt with slide rock mixed in. The next layer was some conglomerate mixed with slide rock then a shallow layer of conglomerate. Most of the conglomerate was broken up and the stuff that wasn't, broke up easy with the bar. The bedrock underneath is a muscovite gneiss. Hauled some dirt and broken up conglomerate from the bedrock contact down to the creek with the 4x4. Panned out the 5 gal. pail. Broke up as much of the conglomerate as I could then panned. At least one color in every pan. Altho small fine colors they were, there seemed to be lots of blk sand in comparison to the bulk of the pail. Went to the top of the saddle and squared off another hole.



- Aug 20 - Back up to the saddle between Steele crk and No-Name. Dug down about 3 ft and hit a conglomerate layer - sandstone. ~~Bar~~ Using the bar was too hard so I widened the hole, so I could swing the pick. Small layer of sandstone, turned to conglomerate and got very hard. Then I had to bar and pick.
- ⑨
- Aug 21 - Back up to the shaft on the saddle. Finally got the bar thru the conglomerate layer. Hard day on the pick and shovel.
- ⑩
- Aug 22 - Back up to the shaft. Finished squaring off the conglomerate then dug into the bedrock a ft. or so. Started getting hard. Not many large rocks in the conglomerate, the largest one probably the size of a baseball. Took
- ⑪

a pail of conglomerate/bed-rock contact down to the creek and panned. Some colors, lots of blk. sand. About the same amount of gold in the crushed conglomerate as in the bed-rock contact. Gold doesn't seem to go into the bedrock at all.

Aug 23 - Loaded Nodwell with supplies to go up Bismark Crk, took the steamer, test box, etc. Headed up Bismark crk. as far as I could go, approx. 4 miles up from the Montana Main Valley. Set up tent and camp. Took Nodwell back down to Steele Crk main camp.

Aug 24 4x4 back up to Bismark camp. Walked up the bench. There's a high bench system up Bismark Crk. Approx. 5 miles long. by any.

where's from  $\frac{1}{4}$  of a mile to 1 mile wide. Very destroyed or overlain by slide's in some spots, while other spots, the bench seem's to be fully in tact.

Aug 25

Walked up bench to Kitchener crk. Headed up Kitchener. The water in the crk. is highly mineralized, alot of sludge on the banks. ~~It~~ Looks like the banks are stained with iron.

(24)

The crk itself is lined with mud, both the banks and also the bottom. Although there is a thin layer of sand overlaying the bottom mud. Pan's out quite abit of blk sand but no colors

Aug 26

- Walked up onto a bench that goes up Kitchener crk. The first outcrop of Host rock I came to is a shist, while

Further up it seems to change to a Muscovite gneiss.

(25) The benching seems to go around the back side of Haystack. The whole area is benched. On one slide area I found a few pieces of conglomerate, so I know I'm on the right track. Started a hole on the rim of the bench,  $\frac{1}{2}$  way up Kitchener.

Aug 27 - Went back up to Kitchener and finished the bench hole.

(26) 2 ft of mud and slide rock, then 3' of gravel then bedrock contact. The gravel is a brown color, lots of quartz, also a few pieces of shist and a chunk of conglomerate. Panned out a few fine colors and lots of blk sand. Bedrock is a muscovite shist.

Aug 28 - Took a walk up to the top of Kitchener. There is even benching up here that goes across to Ruby Crk valley. All of the host rock outcrops are made up mostly of Muscovite gneiss. Found a couple of areas where it has a green tinge to it, so I suspect some biotite.

(27)

Looking down towards the Ruby valley, the benches seem to get even bigger. Haystack mtn. is still aways away, about a days walk from here. Started a little rim hole of one little bench on the saddle. Seems to be all slide rock. Has a bit of an Iron stain to it.

Aug 29 Headed back up to the saddle between Kitchener and Ruby. Took my sleeping

bag and supplies for a couple of days. Finished the hole on the bench. Slide rock down  $1\frac{1}{2}$  ft. then a small layer of conglomerate (4" thick) then bedrock - muscovite gneiss.

(28)

Walked over the saddle to Ruby. High benching on this side of the saddle, that goes down both sides of the esk, although the left limit has more of the benching in place. Some spots look to be a mile wide and carry all the way down the esk.

It would take many years to test the benching on Ruby Ck.

Camped on some forks, right at the bottom of Haystack.

Aug 30 - Trib where I camped panned out lots of blk sand, couple of small pieces of sandstone. Looks like an outcrop of serpentine on one of the faces below Haystack.

climbed up Haystack. Wow what a view. Haystack is very steep. By walking around the edge of the top you can see everywhere. The area is one big set of benches. Between Ruby and McKinnon its got a low saddle that looks like a bench running across both creeks to and continuing on down the Indian River Valley.

(27) I can see where it comes down from the headwaters of the Indian River, crosses at the mouth of Eureka, then Montana to continue across McKinnon, Oct. Oct.

There's benching all around the mountain. It looks like Haystack must have come up in the middle of a huge water system. Headed down into the saddle between the ridge on the Stowe side and Haystack.

Set up camp by a seep. Can see the top end of Ruby from here. Its a huge system.

Aug 31 - Headed down across the saddle between Stowe and Kitchener. Got to camp ~~at~~ early afternoon. As supplies were low I jumped on the 4x4 and headed down to Steele crk main camp.

30

Sept. 1<sup>st</sup> - 4x4 back up to Bismark camp with supplies. Packed sleeping bag and some provisions and headed back up to low saddle between Stowe and Kitchener. Walked across the top end of Stowe crk. Panned a minute color and lots of black sand. Crossing a slide on the ridge above Stowe, I found a piece of conglomerate. Host rock seems to be a granite gneiss, although there is also some serpentine chunks. The more I look around the more conglomerate I'm finding. Found on outcrop with a layer of conglomerate underneath



(31)

some gravel. Bedrock looks like a muscovite sheet. Set camp at the top of McKinnon on the ridge between Stowe.

Sept 2

- Walked back to the Stowe side of the ridge. A good vantage point to see down Stowe. One side of Stowe (Right limit) is very deep cut while the left limit is low and gradual. Benched all the way down. There's an even lower saddle across Stowe towards the Mouth of Montane crk. The crk has no name on the map, so I'll call it L.L. for left limit crk. Broke camp. Headed down McKinnon, Hugh benches on McKinnon also. It seems that all the left limits in this area is the side with all the benching. Hugh benches on that side of the crk. The creek pans out lots of blk sand. Pieces of conglomerate everywhere.

(32)

High benching, as I described ~~earlier~~ earlier, there's a big bench that runs across McKinnon across a low saddle towards Ruby. Found a color on surface in one of the scaps. Lots of blk sand in every pan. Camp on a bench overlooking a fork with three ribs coming in at once. It seems like I'm right under Haystack mountain.

Sept 3 - Some spots where the benches are washed out, I found lots of conglomerate, lots everywhere. Found an old shaft in the crk. Panned some of the bedrock, about 7 colors in each pan. Bedrock is a shist (greyish in color). Further down I found where some old timers had opened a face on the hill. They opened up a Conglomerate that is a different color than the one's I've been seeing. This one has a blackish

(33)

color to it. Compared to the iron stained stuff I've been finding. I assume the black must be a volcanic. Crushed some up and panned. 4 or 5 colors lots of blk sand. Lots of round quartz pebbles. Bedrock is a gneiss.

Sept 4<sup>th</sup> - Panned all the tribos I crossed, lots of blk sand, the odd color here and there. Not bad looking for panning on surface. Lots of old workings, conglomerate exposed everywhere. Found an old road, so now I'm following it. Found some newer workings and an adit with a road to it on the right limit. Camped at a spot where 2 trailers were sitting. I ~~assume~~ assume this is Bill Harris's outfit.

Sept 5 - Followed the set of benches that appears to go across McKinnon to Ruby, coming from the North

of Montana ark. Did a couple of small rim holes. Shist bedrock overlain with gravels in one hole. Brown sand mixed with blk sand, no colors. 2nd hole there was some conglomerate chunks mixed with the slide rock. Under the slide rock was some brown gravel, some fine colors mixed in with the brown sand/blk sand concentrate. Camped on the bench above a crk that goes down across high benching and enters Montana Crk near the Indian River Hay Farm. From here on I'll call it the Farm crk.

(35)

Sept 6 - Headed over the saddle down conglomerate crk (trib of Stowe). Most of the outcrops seem to be a gneiss. Found lots of Serpentine on one outcrop. Another outcrop had what looks like a copper stain, altho. I never found any Mal-

(36) achite or Azurite etc. Down conglomerate, found one old shaft, across Stove and up over the ridge to camp, long day.

Sept 7<sup>th</sup> - Low on supplies, 4x4 back down to main camp then Truck to town.

(37) Sept 9<sup>th</sup> - Back from town, loaded 4x4 Honda with supplies, then headed up to Bismark camp.

(38) Sept 10<sup>th</sup> - Took a walk along Bismark bench, up past Kitchener. It narrows down about 1/2 mile past Kitchener, then gets into higher more destroyed benches. Did a small run hole on a bench beside the trib. past Kitchener. Slide rock on top of gravel, shist bedrock. 2 colors/pan. Lots of blk sand and garnets. Going back down to camp, I found a spot that I wanted

to shaft on. Just down from kitchen, on the bench.

Sept 10 - Loaded up Steamer on 4x4 and took it to the spot I had picked for shafting. Started to set up steamer.

Sept 12<sup>th</sup> - Took the rest of the gear down on the 4x4. Cut wood and packed water to steamer. Squared out hole 4 ft x 5 ft. Mud down to frozen at 2 ft.

Sept 12 - Started fire then steamed points down 4 ft. Started mucking out. Hit gravel down 4 ft from surface.

Sept 14 - Finished mucking out hole. Brown gravels, pans out about  $\frac{1}{2}$  blk sand  $\frac{1}{2}$  brown sand, lots of garnets and possibly some chromite. Want to test it.

to be sure. Filled steamer up with water, then cut wood.

Sept 15 - Started steamer, points down another 4 ft. Started mucking out. This would be alot easier with 2 people. Very slow going, I have to fill up 2 - 5 gal pails, hook both ends of the rope up to them, then climb up and pull them out, one at a time. More brown gravel.

Sept 16 - Finished mucking out holes down 10 ft now. Still brown gravel, but the rocks are getting ~~co~~ courser. Small colors in nearly every pan now.

Sept 17 - Cut wood for steamer, hauled water on 4x4 from ark. Let time and steamed points down another 4'

Sept 18 - Started mucking out shaft. One more ft of brown gravel, then it changes to a grey gravel. A lot more blk. sand now in the concentrate. It seems to be finer than the blk sand from the brown gravels.

(47)

Sept 19<sup>th</sup> - Mucking out shaft. Grey gravels are getting coarser now. Lots of quartz rocks stained an iron color. Found a piece of mica (muscovite) with what appears to be hornblende crystals. Getting more colors in each pan.

(48)

Sept 20 - Finished mucking out the shaft. Just into a muscovite shist bedrock. The gold doesn't seem to go down into bedrock very far. Had a pan with 12 colors, a couple of them were quite coarse. Saved most of

(49)



the grey gravels. Hauled it down to the creek on the 4x4. Will put thru the test box tomorrow.

50  
 Sept 21 - Hauled the test box and pump down to the creek on the 4x4. Set it up, then shoveled the grey gravels and bedrock contact thru it. Cleaned up, lots of garnets, some of them the size of marbles. After weighing up the gold, it proved out to be approx. #5 per yard. Considering the ~~fineness~~ ~~of~~ fineness of the concentrate I must be on the edge of the channel. One more hole should prove up more. 4x4 for supplies

51  
 Sept 22 Moved steamer farther up on the bench to do another shaft. Cut wood, hauled water with 4x4, filled steamer

then squared up hole.

Sept 23<sup>rd</sup> - Started steamer, then steamed points down 4'. Started mucking out hole. So for mud down 5' with a few pieces of slide rock intermixed.

(52)

Sept 24 - Filled steamer with water packed from cork on 4x4. While steamer was heating up, I cut wood. Steamed points down another 4'. Started mucking out. Still in mud at 6 ft.

(53)

Sept 25<sup>th</sup> - Went back to shaft and kept mucking out hole. Mud ended at 7 ft. Brown gravel mixed with some slide rock.

(54)

Sept 26 - Finished mucking out shaft. Still brown gravel, pans.

out with the odd color.  
 (55) Half blk sand and half brown  
 sand in the concentrate.  
 Down 9 ft now

Sept 27<sup>th</sup> - Hauled water up to the  
 steamer. While steamer was  
 heating up, I cut wood.  
 (56) Steamed points down another  
 4'. More mucking out. Still  
 in brown gravel.

Sept 28<sup>th</sup> - More mucking out. It's very  
 slow by myself. Got thro the  
 brown gravel layer and  
 (57) just into the grey channel.  
 Shaft now 12' deep.

Sept 29<sup>th</sup> - Finished mucking out shaft  
 Down a ft. into the grey  
 channel. A few colors/pan,  
 (58) lots of blk sand and garnets.  
 Blk sand is coarser now  
 than the blk sand in

the brown gravels.

Sept 30 - Cut wood then hauled water and filled steamer.  
(59) Steamed points down another 4 ft.

Oct 1<sup>st</sup> - Mucking out shaft. Grey channel is getting courser, lots of quartz rocks. Concentrate is appears to be the same as Tom is getting down on Montana bench below Bismark, so I believe this is the same channel.  
(60)

Oct 2<sup>nd</sup> - More mucking out, channel is very compact, making it hard digging. Getting some nice size quartz boulders out now. I got a football size rose quartz boulder also. Gold getting a little courser now.  
(61)

Oct 3<sup>rd</sup> - Finished mucking out shaft. I seem to be on the edge of bedrock contact. Fired up steamer and steamed points down. The points went down easily, so I know that I'm on bedrock.

(62)

Oct 4<sup>th</sup> - Cleaned out shaft, a ft. into bedrock. Colors again don't seem to go into the bedrock very ~~far~~ far. Bedrock is a Muscovite schist.

(63)

Oct 5 - Hauled the bottom ft of grey channel and the bedrock down to the ark on the back of the 4x4. Started putting the gravels thro test box. Lots of concentrate with some nice size garnets.

(64)

Oct 6<sup>th</sup> - Cleaned up test box and panned down the concentrate.

(65) Lots of magnetics, garnets, what looks like a wolframite, and some nice pieces of course gold. (Match head size, only flat). Separated the gold and weighed up, it proves out at approx \$9/sg. yd. It's definitely rich enough to mine.

Oct 7 - 4x4 to main camp. Truck  
(66) to town for supplies.

Oct 9 - Back from town with  
(67) supplies. Loaded 4x4 with pop tent and supplies enough for a few days. Headed down to the lower end of Montana Crk. Spent the night at the Indian River farm.

Oct 10 - Walked up the crk, from  
(68) the Indian River farm. I'll call it Farm crk. as it has no name on the maps. The benching

is alot bigger here than it was, even on Ruby crk. The benching comes down the Indian River Valley, crosses Montana Crk, then curls in by this crk, then keeps going down the Indian River. The higher benches seem to also come down the Indian across Montana and through the upper ends of McKinnon and Ruby.

Set up camp below an outcropping of Muscovite gneiss.

The crk is larger than it at first seems, blk sand shows up in every pool, and quartz boulders are common.

Oct 11 - Started a rim hole on one of the benches below camp. Thaw is good this year. Dug down 4', mixture of Brown gravels, slide rock,

with the odd layers of mud. Quite mixed up at this point. Black sand poured out with every pan. The odd color, very fine. The slide rock is a gneiss, with the odd piece of Serpentine and chlorite schist. Bedrock rim is a Muscovite schist.

Oct 12 - Walked across the creek to follow some more of the benching. I can't get over the size of the benching in this spot. Each area of bench is at least a half mile wide by one mile long or more. Did a rim hole on the bench below an outcrop with a seep coming down. A couple of ft. of mud covering brown gravels. Found a couple of pieces of Sandstone and conglomerate mixed in with the gravels. Blk sand in every

(70)



pan, the odd fine color. Also looks like some wolframite. Bedrock again is a Muscovite schist. Walked up over the seeps, towards the upper end of the crk. What a view, I still can't get over the size of the benching!

Oct 13<sup>th</sup> - Walked along the benching towards McKinnon crk. Diced the odd little rim hole to determine if it's all round rocks coming off of the benches. It is, must of been a great deal of water that came down here at one time. Found the odd piece of conglomerate in the slide rock. Back to camp.

Oct 14 - Broke camp, headed back down to the Indian River Farm. Loaded 4x4 and started up. Montana crk, Stopped at

(72) a left limit trib. of Montana. Panned a couple of fine colors and lots of blk sand, so I decided to set up camp here and check it out.

Oct 15<sup>th</sup> - Started a rim hole on one of the benches. I got to bedrock at 4', bedrock is a Muscovite schist overlaid with round gravels that appear to be in place. Panned fine colors on bedrock contact. Lots of blk sand, again what appears to be a wolframite. Lots of quartz, some pieces of sandstone. This benching runs down Montana and joins up with the benching I was just checking out on Farm crk.

Oct 16 - Opened up another hole further in on the bench. (74) There not as good here, I get

down into the mud only 2 ft then hit frost. Went up onto the next bench and did a little rim hole there. Hit rim at 3 ft. Muscovite shist Slide rock for  $2\frac{1}{2}$  ft, then a half ft of round gravels. Found a piece of conglomerate in the slide rock. It seems like the whole area is covered with conglomerate, all that needs to be done is find the paying channel in it. Checked the crk a few times, again quite a bit of blk sand concentrate

Oct 17 - Decided to do a major shaft from the things I've seen in this area. 4x4 down to Bismark camp for steamer. Hauled steamer back to left limit crk. Also picked up more supplies.

(75)

Oct 18<sup>th</sup> - Set steamer up on the bench. Dug out fire pit. Hauled water on the back of the 4x4. Cut wood for steamer. Started squaring out shaft opening.

(76)

Oct 19<sup>th</sup> - Finished squaring out shaft, 5'x4' by 2 ft deep. Started steamer and steamed points down 4'

(77)

Oct 20 - Mucked out shaft. Two more ft. of mud then it has a ft. section of false bedrock (shist). Then there's brown gravels. Pans out with again, half blk sand and half brown sand. A few garnets but no colors so far.

(78)

Oct 21 - Hauled water to steamer. Cut wood then fired up steamer. Steamed points.

(79)

down another 4'. Started mucking out. Still brown gravels. Concentrate the same.

Oct 22 - Mucking out shaft. Brown gravels getting a little bit coarser. More, bigger, quartz rocks now. The odd color when panned now.

(80)

Oct 23 - Finished cleaning out ~~the~~ bottom of shaft. Still brown gravels. Hauled water from crik. Cut wood, filled steamer, steamed points down another 4'.

(81)

Oct 24 - Brown gravels have changed to a grey channel now. Blk sand is alot thicker in the concentrate now. Still only a few colors, every other pan.

(82)

Oct 25<sup>th</sup> - Concentrate has courses  
blk. sand now. There is a  
few colors in every pan.

(83)

Garnets are very abundant.  
Also, again what looks like  
wolframite. Some pieces  
of rose quartz and lots  
of quartz boulders.

Oct 26 - Finished mucking out the  
grey gravels. Bedrock contact

(84)

pans out nice colors. Two  
or three course colors each  
pan, with lots of fines. Bed-  
rock is a Muscovite shist

Oct 27<sup>th</sup> - Finished cleaning out the  
bottom of the shaft. One ft.  
into bedrock. Shaft has

(85)

4 ft of Mud and slide rock.  
1 ft of false bedrock, then  
turns to brown gravels which  
go down for 5 ft then 2 ft.  
of grey channel, down into a

ft. into Muscovite shist  
bedrock. Panned out a  
bunch of the bedrock contact.  
Pays approx \$6/sqyd. I decided  
not to do anymore testing in  
this area until I can stake  
it.

Oct 28 - Dismantled steamer and  
loaded it on 4x4. Broke  
(86) camp and headed down to  
main Steele crk. camp.

Oct 29<sup>th</sup> - 4x4 up to Bismark camp.  
Broke camp, loaded on 4x4,  
(87) couldn't quite get the test  
box and pump on 4x4. I'll  
pick up later. Hauled stuff  
back down to main camp  
Steele.

- From here I went up  
to Left Fork of Montana  
Crk. and sunk another

shaft. Once the money from this grant comes thru I will be going down to Farm crk and L.L. crk. to do some staking and further testing in the crk bottoms.

- Truck back to town.