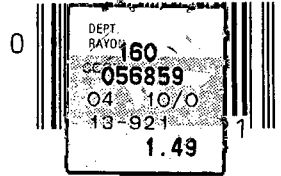


Hilroy



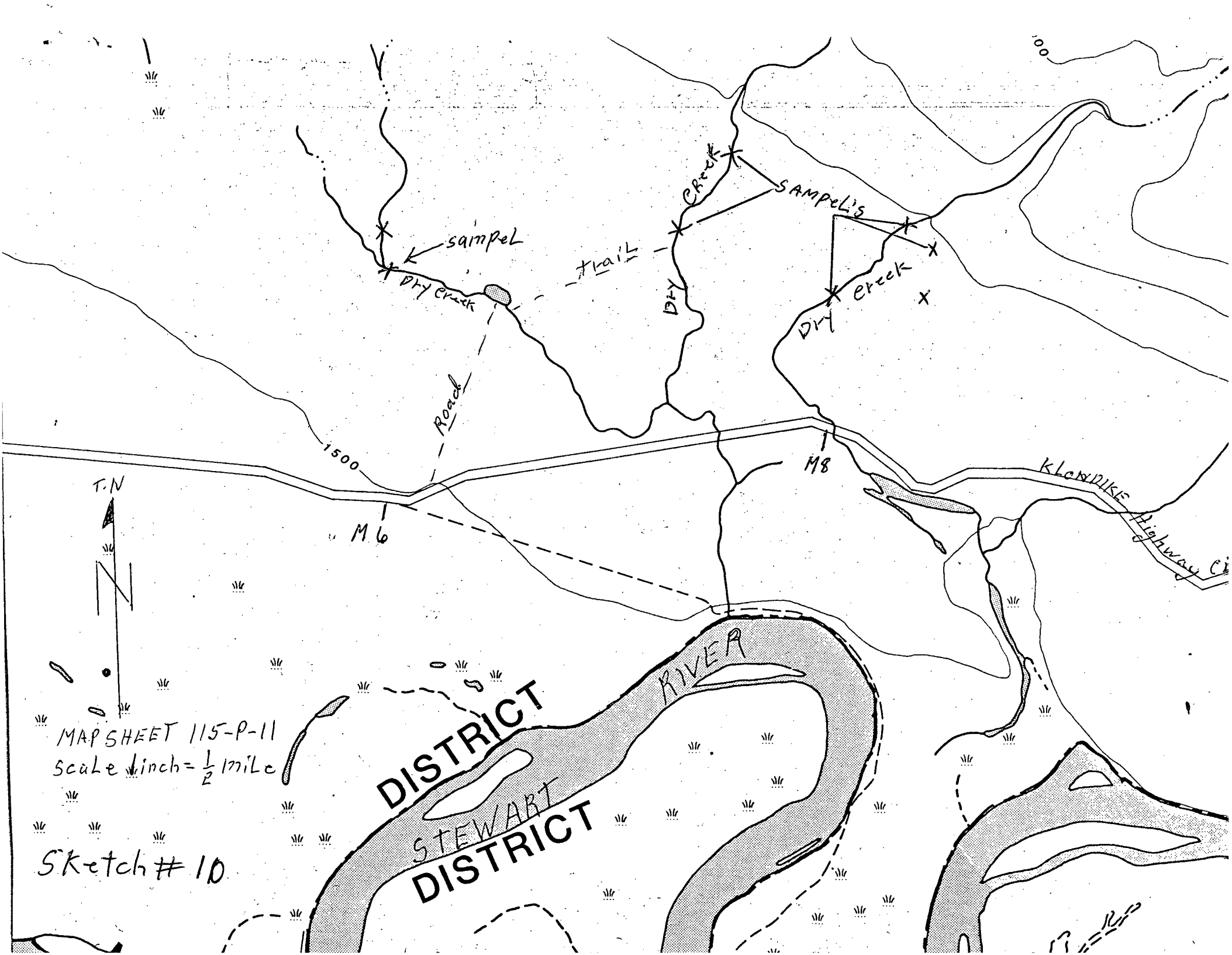
note book • cahier ^{avec} spirale

name-nom Miguel N. Carrero

subject-sujet Prospectiva, Report

HILROY Toronto M6E 2R9
Made in Canada - Fabriqué au Canada

60 pages
23.2 x 18.1 cm
no 13-921



MAP SHEET 115-P-11
Scale 1 inch = 1/2 mile

Sketch # 10

DISTRICT
STEWART
DISTRICT

STEWART RIVER

Road

Trail

Sample's

sample

Dry Creek

Dry Creek

Dry Creek

Klondike Highway

T.N

1500

M 6

M 8

100

Day 33

July 4/90

weather

got 3 wheels fixed in whitehouse
arrived at Mc. Questen 5: PM.

Day 34

July 5/90

weather

Sunny & Hot

Took samples at Dry Creek
small specks of gold see sketch #10

Day 35

July 6/90

weather

Sunny every Hot

worked on water pump to
Day for sluicing working good
screen in Exhaust plugged.

Day 36

July 7/90

weather

sunny with cloudy intervals

went back in to Dry Creek area
took more samples tested small
specks of gold. 8 Miles south
of Mc Questen Bridge.

see sketch #10

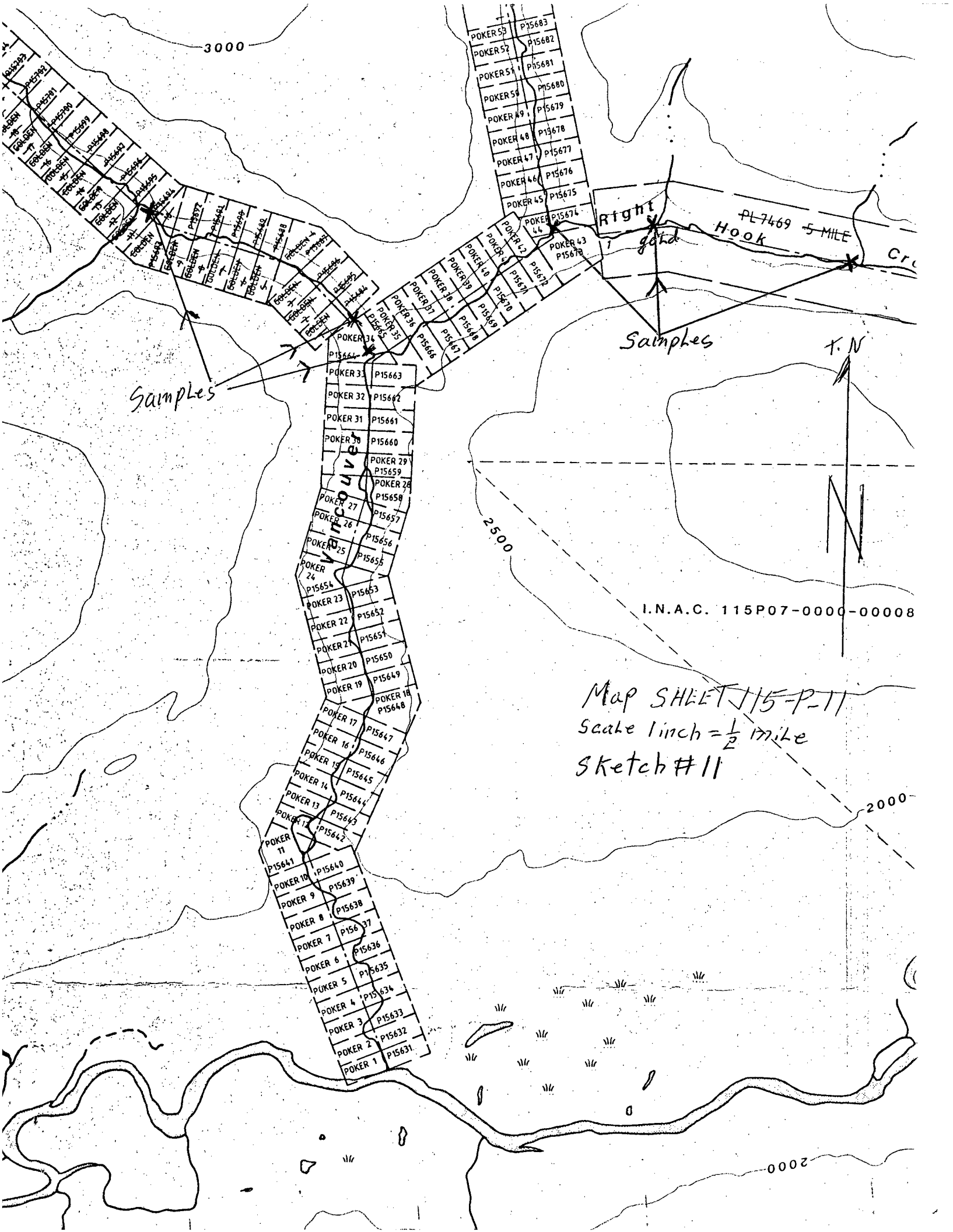
Day 37

July 8/90

weather

sunny Rain cloudy intervals

went back to lake at
6 miles ^{south} from Mc Questen Bridge
took more samples gold specks
see sketch #10



3000

2500

2000

2000

Samples

Samples

Right Hook Creek
PL7469 5 MILE

T.N

I.N.A.C. 115P07-0000-00008

Map SHEET 115-P-11
Scale 1 inch = 1/2 mile
Sketch # 11

- POKER 59 P15683
- POKER 58 P15682
- POKER 57 P15681
- POKER 56 P15680
- POKER 49 P15679
- POKER 48 P15678
- POKER 47 P15677
- POKER 46 P15676
- POKER 45 P15675
- POKER 44 P15674
- POKER 43 P15673
- POKER 42 P15672
- POKER 41 P15671
- POKER 40 P15670
- POKER 39 P15669
- POKER 38 P15668
- POKER 37 P15667
- POKER 36 P15666
- POKER 35 P15665
- POKER 34 P15664
- POKER 33 P15663
- POKER 32 P15662
- POKER 31 P15661
- POKER 30 P15660
- POKER 29 P15659
- POKER 28 P15658
- POKER 27 P15657
- POKER 26 P15656
- POKER 25 P15655
- POKER 24 P15654
- POKER 23 P15653
- POKER 22 P15652
- POKER 21 P15651
- POKER 20 P15650
- POKER 19 P15649
- POKER 18 P15648
- POKER 17 P15647
- POKER 16 P15646
- POKER 15 P15645
- POKER 14 P15644
- POKER 13 P15643
- POKER 12 P15642
- POKER 11 P15641
- POKER 10 P15640
- POKER 9 P15639
- POKER 8 P15638
- POKER 7 P15637
- POKER 6 P15636
- POKER 5 P15635
- POKER 4 P15634
- POKER 3 P15633
- POKER 2 P15632
- POKER 1 P15631

Day 38

July 9/90-

Weather

sunny

Took more samples on Chew #3
claim all samples come up with
approx 8 to 12 specks ^{Gold} per pan.

Day 39

July 10/90-

Weather

sunny

Checked 40 mile Road, 17 miles to
old ~~and~~ conservative trail 13.6
miles to 40 mile crossing approx 24 inch
water, at crossing two bad holes
to dip. turn off ~~at~~ on Mayo
Road 38.6 Km post.

Day 40

July 11

Weather

cloudy with showers

Went up Vancouver Creek to took
samples & panned out see sketch #11
stayed over night at cabin
at fork.

Day 41

July 12

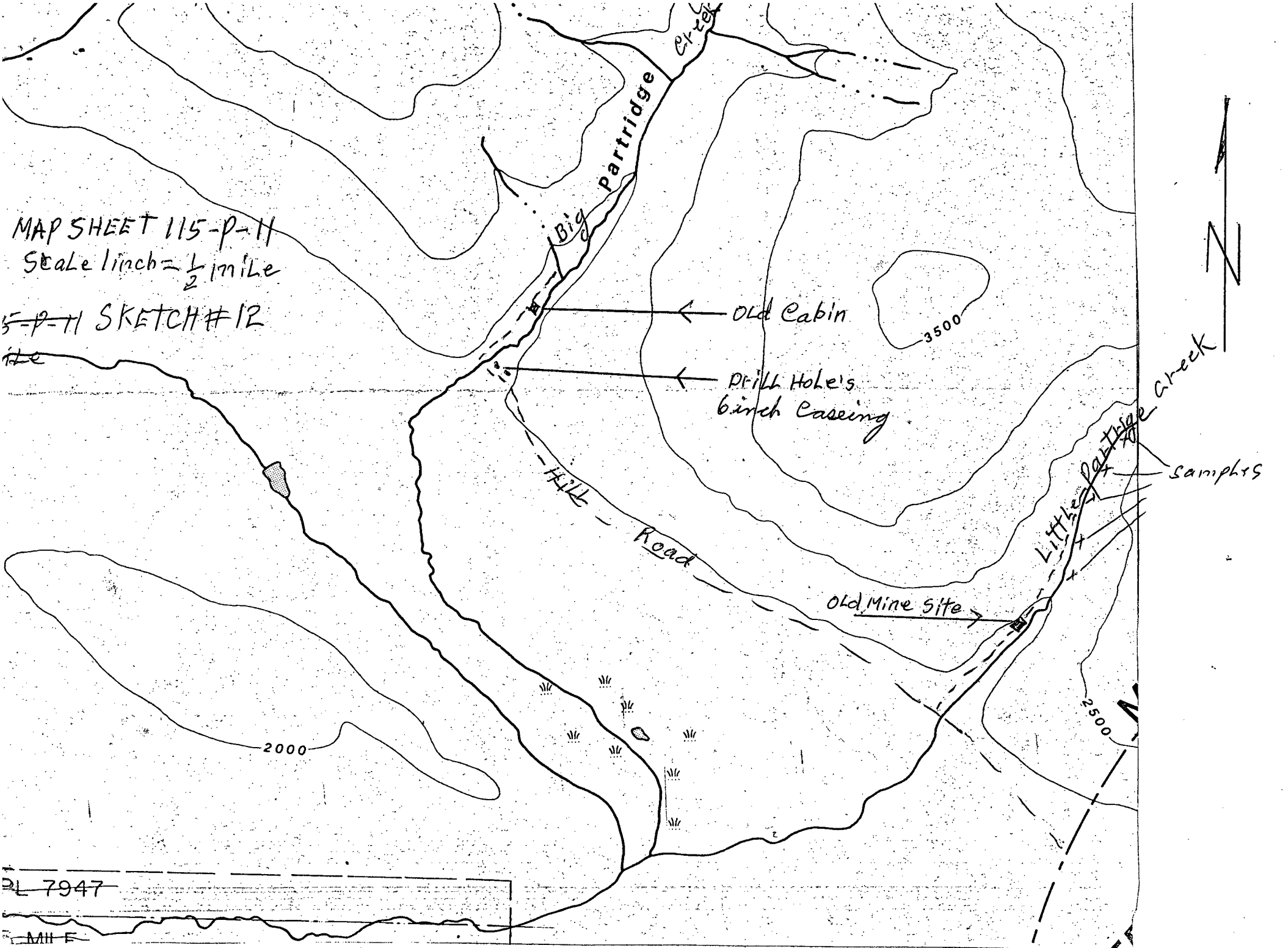
Weather

showers & cool

Took samples on Right Hook Creek
see sketch #11 a couple of specks of gold
up Right Hook. Back to camp

MAP SHEET 115-P-11
Scale 1 inch = 1/2 mile

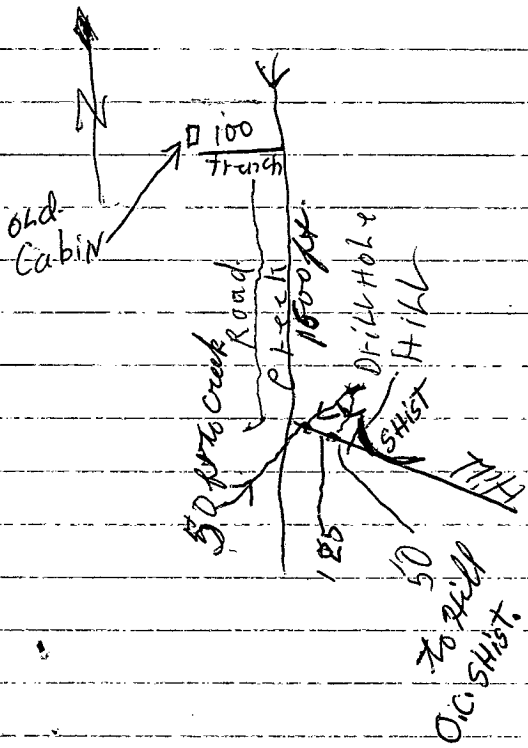
5-P-11 SKETCH #12



PL 7947

MILE

Mag North



Day 42

Weather sunny & showers

July 17/90 Went up partridge Creek took
samples. panned old samples no gold
6 inch drill casing still in ground
at creek, 1 Hole 50 ft from creek 8 ft
of casing out of ground. Sec Hole 125 ft
from first hole 1 ft of casing out of
ground. Old cabin 1500 ft up creek
Roof caved in. Heavy seed growth on
road. see sketch # 12 some of the
gravel out of the drill hole looks like Vancouver

Day 43

July 18/90 Creek gravel no gold. Expect to go up creek
weather Later

sunny

^{Little} up partridge Creek from old mine
site approx $1\frac{1}{2}$ miles panned samples
a couple of small specks of gold
old road up creek grown up with
second growth, will lightly go
up in fall when leaf's are off.
see sketch # 12

Day 44

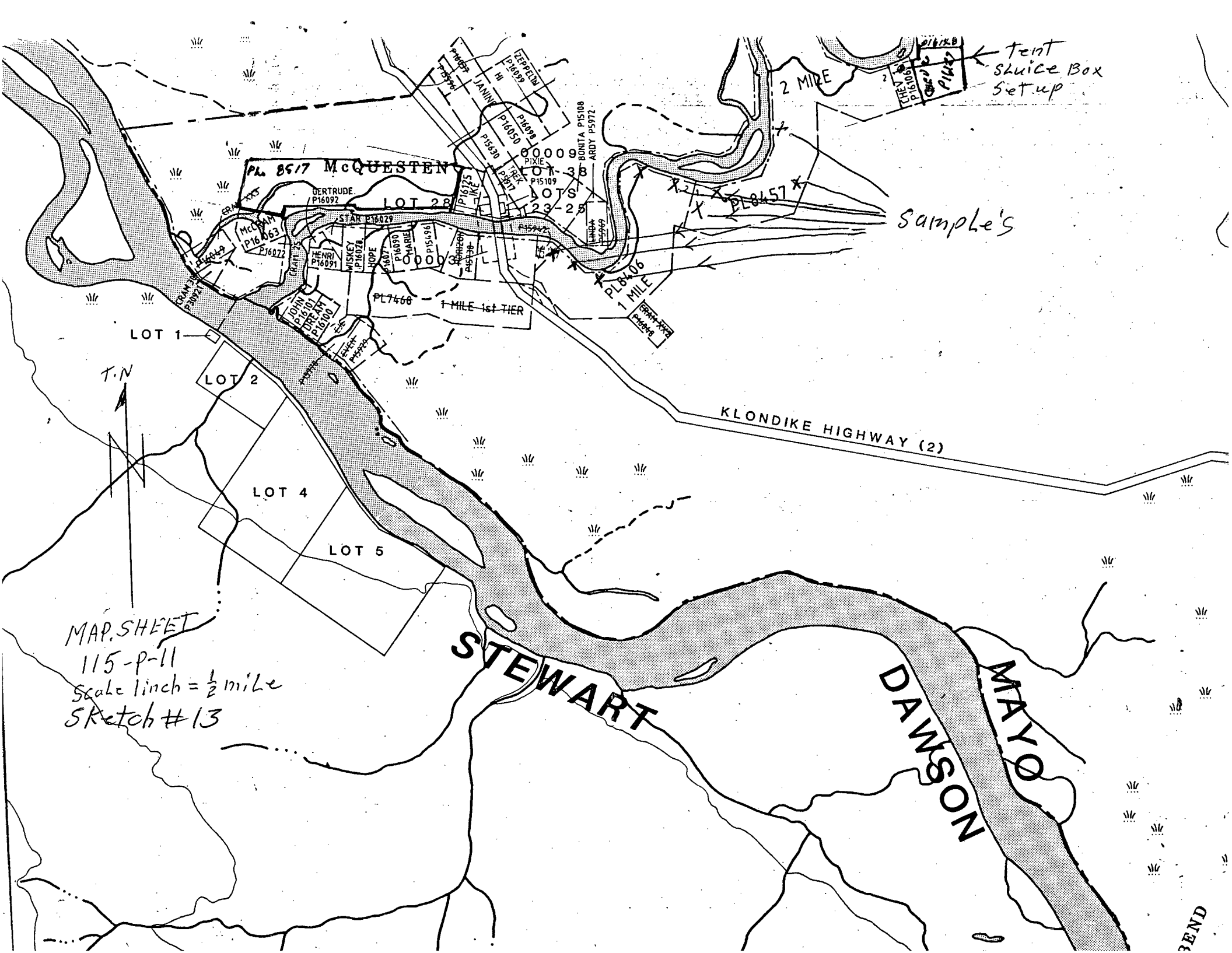
July 19/90

weather

sunny & hot

panned out samples at camp
not too much gold, a few specks
re. set up sluice box at claim
Chen # 1





tent
sluice Box
Setup

sample's

MAP SHEET
115-p-11
Scale 1 inch = 1/2 mile
Sketch #13

T.N

BEND

Day 45
July 20/90

Weather
sunny & Hot
took samples along River for test
Holes later on with back Hoe.
Most with specks of gold
see sketch #13

Day 46
July 21/90

Weather
sunny & Hot
put samples through sluice
Box set up. got a couple coarse
specks of gold. Most fly shit small.
see picture. with
sketch #13

Small Box at END with wool Blanket
got fine gold set up Chem #1 claim
on Queen River.

Day 47
July 22

Weather
sunny & Hot
worked on claim putting
gravel through sluice Box ~~for~~ off.
River Bank $\frac{1}{2}$ yard for assay
assay 0.012 oz/yard from
first assay.
copy of assay in Book.

DISTRICT
DISTRICT

MAP SHEET. 115-P-11
Scale 1 inch = 1/2 mile
Sketch # 14

MINING
MINING

Road

Sample

3 MILE
PL8087

3500

3000

4000

Cable
Crossing

00002

PL7874

2 MILE 2nd TIER

PL7827

LOST DUTCHMAN

LITTLE
DUCK

SABRE.

CO-DISC.

CO-DISC.

1574

P5745

P5783

gold

gold

A

Day 48
July 23

weather

sunny & hot

Re sampling along River 2500 ft in
on lease PL 8457 put through sluice
3 small specks of gold.

see sketch # 13

Day 49

July 24

weather

sunny & hot

went up creek west of Vancouver
very dirty bush. approx $\frac{1}{2}$ mile
up from road gold in clay

on edge of creek no gold in
ground under clay. Heavy schist
possibly quartz hornblende schist
in spots up creek. see sketch # 14

Day 50

July 25/90

weather

sunny & hot

took sample's up stream from
Cable Crossing on McQuesten River
approx 4000 ft. 2 specks of gold out
of 12 pans. see sketch # 14

Day 51

July 26 to July 31

worked on chevron claims
prospecting later in fall another 15

days or
more

Aug 3 went to white horse
check with Dave office mat
in flood after working on
walter smith claim. Testing &
assist. work.

Aug 4 walter smith & walter jack
came up on their property.

working on up grading claims
& Lease

Day ~~52~~

Explosives	309.20	✓✓
To Bld Explosives Mag	17.22	✓✓
Map's	12.00	4.50
assay	30.00	✓
SBX 11 two way radio 59656 - No receipt.		
200.00 month 3 months	600.00	
18 days x 45	= ? 810.00	
32 turned in	810.00	

gas bills on mileage

370.00

2148.42

July 18, 1990

Work Order # 34736

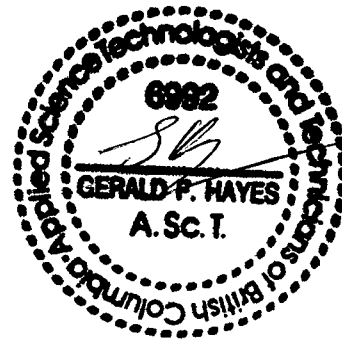
Myrl Currie

Assay Certificate For Samples Provided

Sample	oz/yard Au
#1	0.012

Au -- Fire Assay/Gravimetric Finish

Note: Sample was said to represent 1/2 of a yard of material.
The assay result is calculated to reflect this.



WESTAB

40 pages

metric ruled
exercise book

cahier d'exercice réglage

name • nom

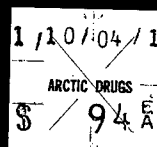
MYRL V CURRIE

subject • sujet

PROSPECTING

10⁷/₈" x 8" • 27.6 cm x 20.4 cm

distributed by • par
Shaben & Hamdon (1980) Ltd.
Edmonton, Alberta T5L 2H7
MADE IN CANADA • FABRIQUÉ AU CANADA



Respecting.

- Day 52 Sept 16/90 sunny
testing 1000 ft from River End of Chew
1 & 2 Claims, a speck or 2 of gold per pan.
Bill Clayton showed up interested
in claim & lease.
- Day 53 Sept 17/90 sunny & cloudy
went to Mayor Recording office
for map's & transaction on Chew. 1. Claim
sold to Graham Jones for \$500000
- Day 54 Sept 18/90
Rain all day. worked around
camp. panned out samples.
- Day 55 Sept 19/90 sunny cloudy intervals
testing 1000 ft from River End of
1 mile lease near Bridge a few specks
of gold
- Day 56 Sept 20/90
went to whitehouse,
- Day 57 Sept 24/90 Rain showers.
we. roofed cabin at Macqueter
with new paper.
- Sept
25/90 Rain
Day 58 put samples through gold
machine,

Sketch # S-1

△ 4183

T.N.

MAP SHEET
115P-11
Scale 2 inch = 1 mile

sample #
S-1

Rock
sample

← Specks
of Gold

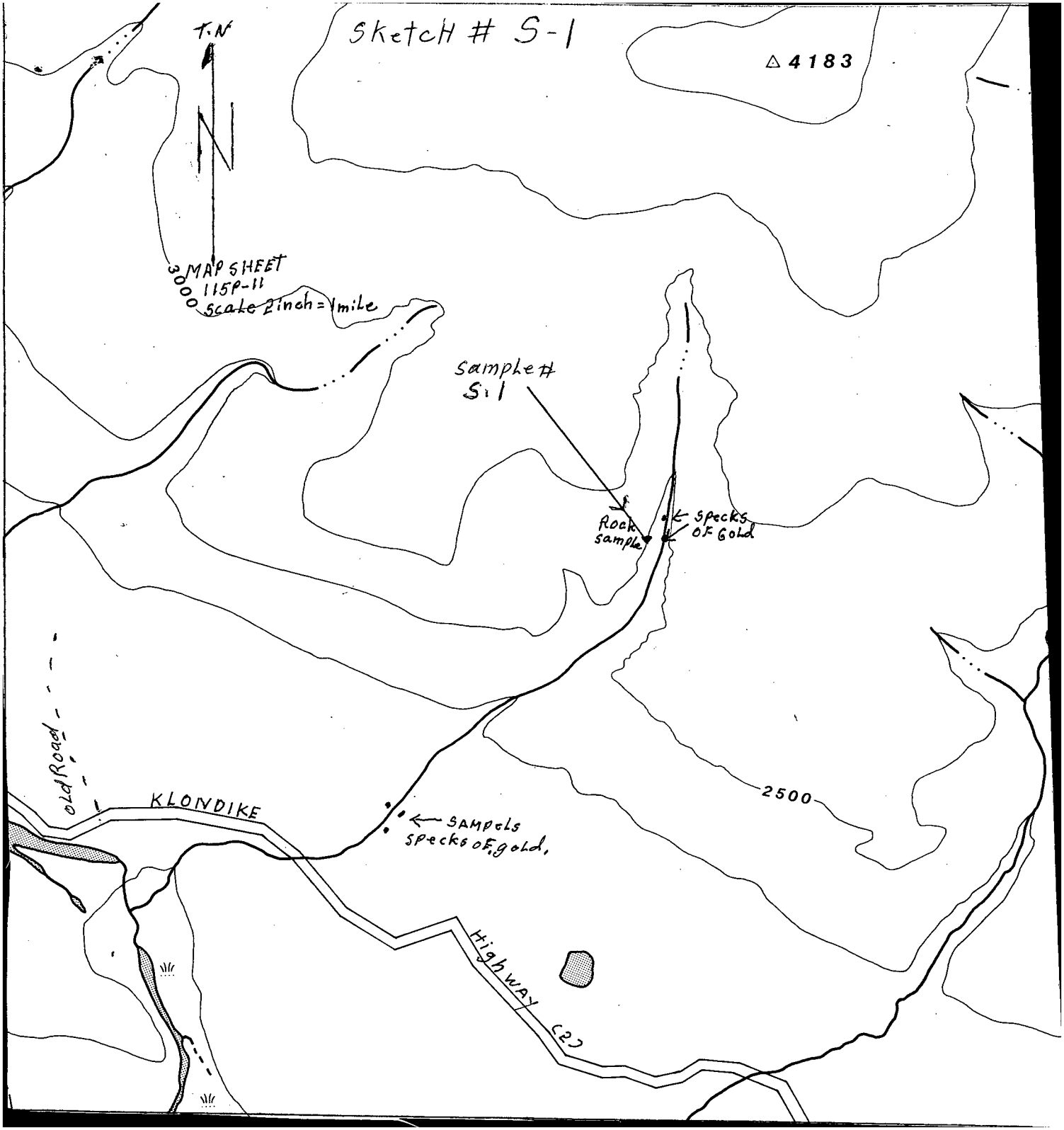
← samples
specks of gold,

2500

KLONDIKE

Highway
62

old Road



T.N

Sketch # S-2.

Staked
By
Allan Lewis



MAP SHEET
115-P-11
Scale 2 inch = 1 mile.

3000

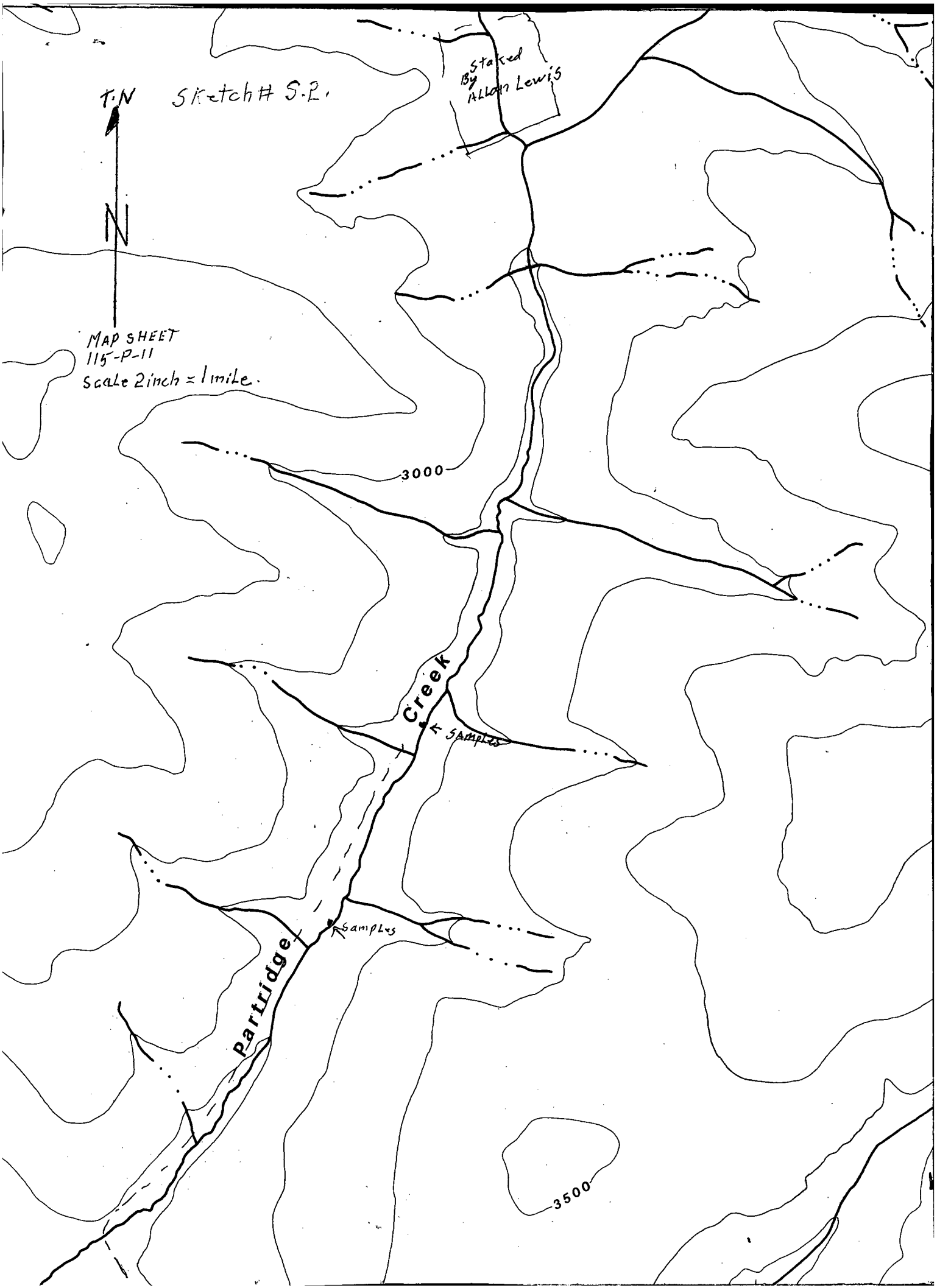
Creek

← samples

← samples

Partridge

3500



oct 1/90

Day 64 went to Dawson City for propaine & get a tooth out, \$40.00 to get a tooth pulled.

oct 2/90

Cloudy & cold

Day 65 spent day looking for old Road to get up an Mountain, 4183 see sketch 5.1. I think I found it, unable to use 3 weeks.

oct 3/90

cold & cloudy.

Day 66

went up road to Little Duck claim & lost ~~with~~ Dutchman. checked out to East of workings, heavy swamp. could not get a good sample. see sketch 5.3 →

oct 4/90 tooth trouble. to whitehouse to see Doctor.

oct 10/90

weather

cold sunny intervals

Day 67 cut line on end of Chew & claim 1000 ft approx

oct 12/90

wet snow all day

68 staked Chew 4 & 5 claim, rough going old Burn. don't feel so good

MAP SHEET
115P-11

Sketch S.3.

Town
A

MINING
MINING

Scale 2 inch = 1 mile

Mc QUESTEN RIVER

00002

swamp

IP15744

IP15745

IP15746

LOST DUTCHMAN

LITTLE DUCK	SABRE
CO-DISC. P15746	CO-DISC. P15747

IP15766

LOST DUTCHMAN

Oct 13/90 weather
Day 69 Snow all day about 3 inch
Stayed in camp sick or flu?

Oct 14/90 weather
Day 70 snow & cold
propaine stove burnt out moved in to ^{on camper-}
cabin, Cut a load of wood.

Oct 15/90 weather
Day 71 cloudy & cold
Went up Harker Creek to check out
Sandy's claim, too much snow approx
6 inch, too much snow on trees
To get around in Bush.

Oct 16/90 weather cloudy
Day 72 packed up camp for season
put ever thing away for next year

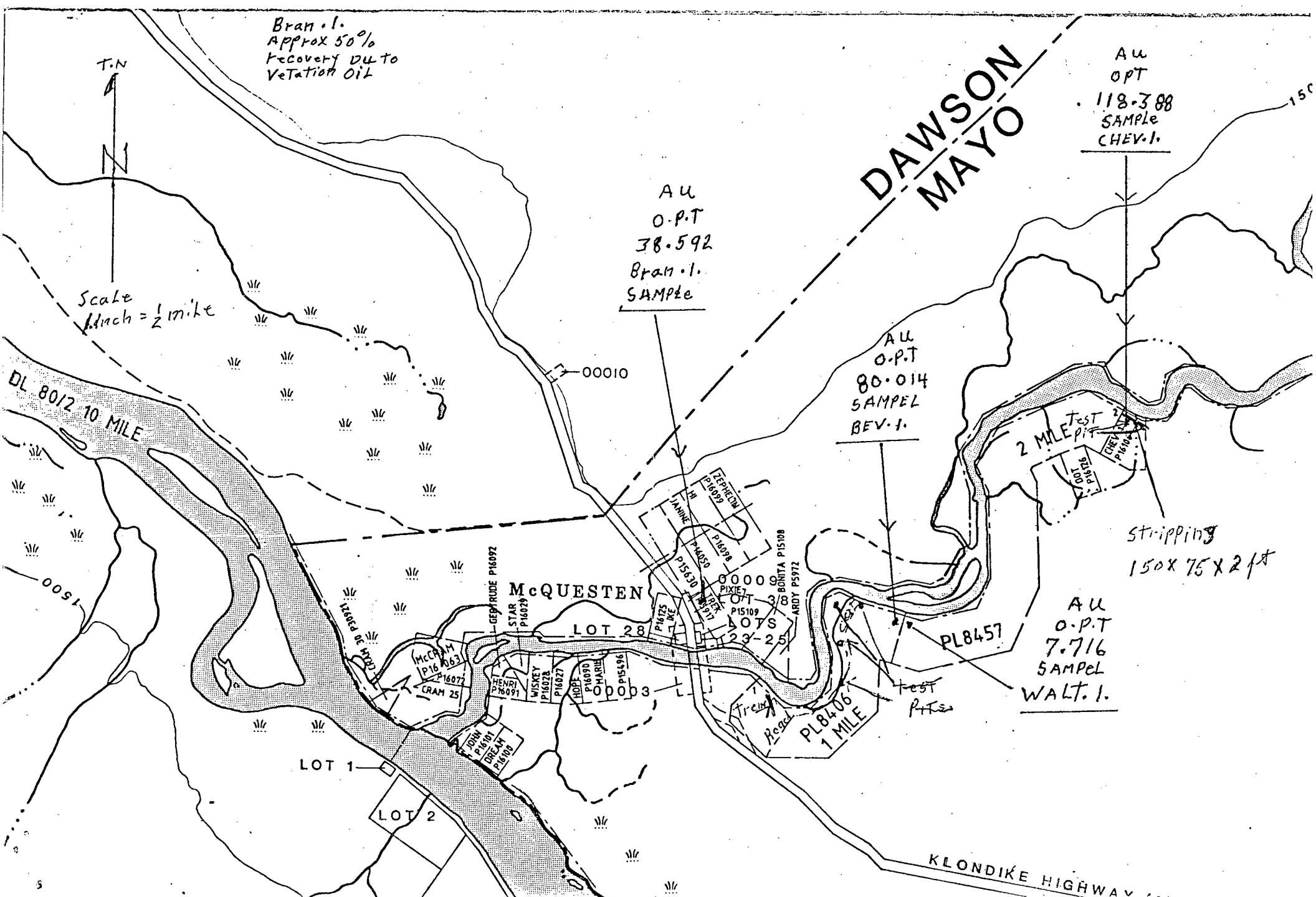
Oct 17/90
Day 73 Back to Whitehorse

Finish for this year. will likely
strike 1 more claim in Nov/90

Total Day's spent in Bush this year 125

ASSAY
1. YARD Sample's Bran. 1. Bev. 1. WALT. 1 CHEV. 1.

SEPT / 90



Receipts

~~1000.00~~

Recording office

1.00 ✓
6.00 N/A. Recording Fees

Lac. soap for panning

8.10 ✓

1 Rtn. x 802 Km x .26 208.52. Travel Cost
Gas: 113.80
Total 128.90

21 Days at 35.00

735.00 ✓

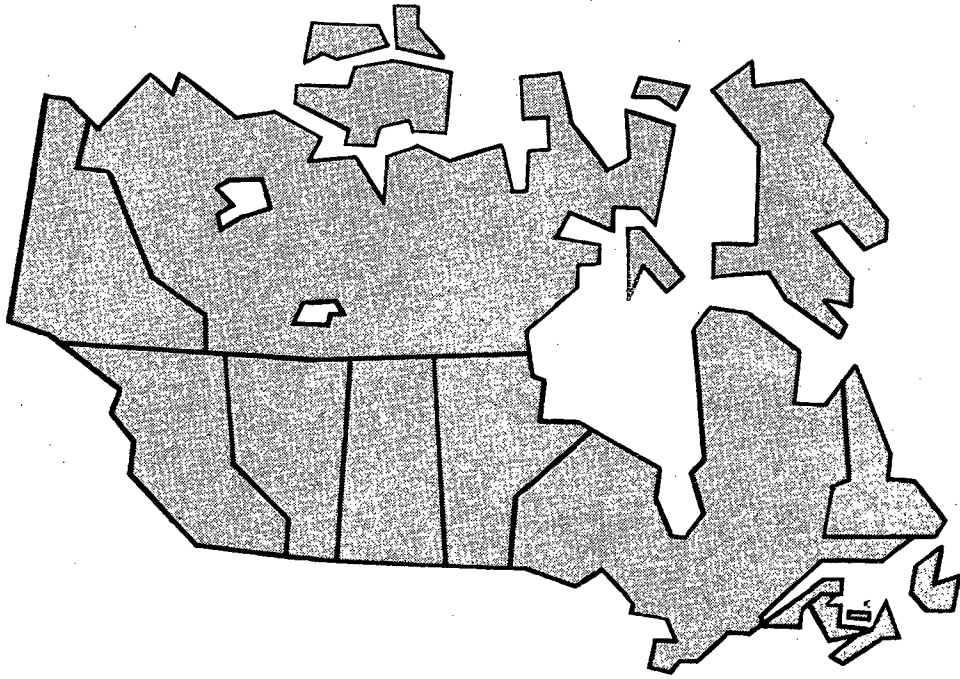
863.90 / Revised Total
\$952.62

← sketch

4 ASSAY OF gold, ounce per tone

BRAN.1. BEV.1. WALT.1. CHEV.1.

A.U. 38.592 80.014 7.716 118.388



CAHIER D'EXERCICES

EXERCISE BOOK



CANADA



1990

NOM NAME Myal V Currie

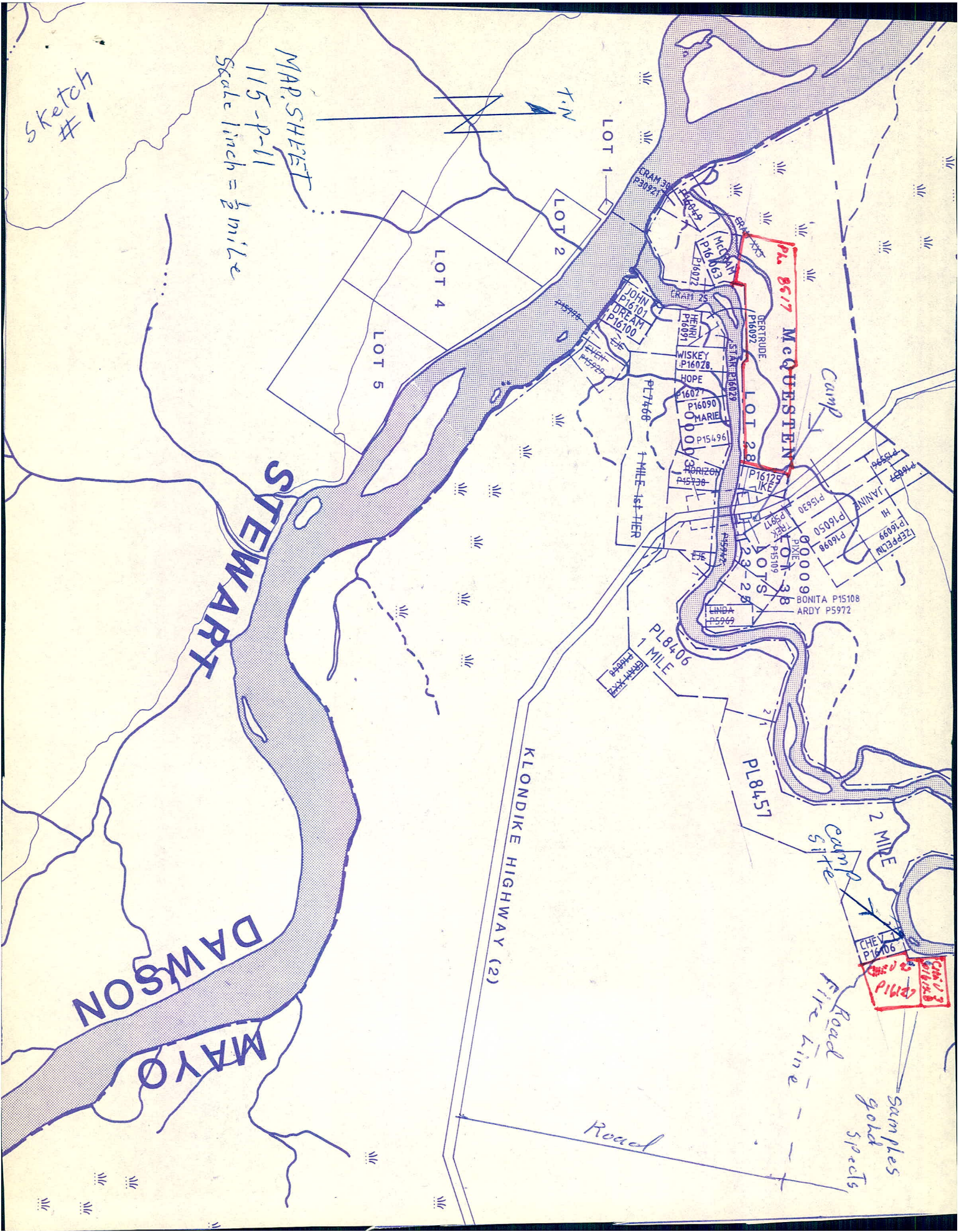
SUJET SUBJECT Prospecting

May 5/90 to

FANCO

Sketch #1

MAP SHEET
115-P-11
Scale 1 inch = 1/2 mile



STEWART

DAWSON
MAYO

KLONDIKE HIGHWAY (2)

2 MILE
Camp site
Road
Fire line
Samples gold specs

PL 8517 McQUESTEN

PL 8451

PL 8406
1 MILE
1 MILE 1st TIER

LOT 1

LOT 2

LOT 4

LOT 5

LOT 28

LOT 38

CRAN 36
P30021

BR 4357

McQUESTEN
P16065

CRAN 25
P16072

JOHN
P16101

DREAM
P16100

WISKEY
P16078

HOPE
P16090

MARIE
P15496

HORIZON
P15731

PIKE
P15109

LINDA
P5969

GERTRUDE
P16092

Camp

JANINE
P15390

MI
P16050

LEPPEN
P16098

BONITA
P15108

ARDY
P5972

CHEV
P16106

PL 8517

PL 8517

PL 8517

PL 8517

PL 8517

prospecting 1990

Day 1 May 5/90

weather

Sunny.

Left Whitehorse for McQuesten River
arrived 4 PM. Cabin Occupated By
Graham Jones, (placer miner)

Day 2 May 6/90

weather

Sunny.

Checked ~~area~~ ^{area} out. McQuesten River
High took samples up stream from
Chew 1 claim gold in samples. 400 & 800
ft from post #2 see sketch #1

Day 3 May 7/90

weather

Sunny.

Staked Claims Chew 2 & 3 up stream
from from Chew 1 south side of
McQuesten River Checked out
Vancouver Road 6 miles up a
lot of trees across Road.

Day 4 May 8/90

weather

Sunny

Went to Mayo for map's &
Recorded Claims Chew 2 & 3
Checked old Road in to McQuesten R
Road called Conservative trail,
to much ice at present to used.

Day 5 May 9/90

weather

Sunny

went to whitehorse for supplies &
Equipment, Left Camper at
McQuesten Lodge.

Day 6 May 17/90

Weather

Hot ~~Extra High~~ Sunny

Left Whitehorse for McQuesten River
with sluice box & pump River High
Checked Road in to claim over water problem.

Day 7 May 18/90

Weather

Sunny

spent day on north side of McQuesten
River panning 2 miles up stream.
see sketch (?) small specs of gold per
sample.

Day 8 May 19/90

Weather

Sunny

Worked on road to Chem. claim
set up tent & Blasted Hole in
Bank for tailing pond to check
set up sluice Box for samples.

Day 9 May 20/90

Weather

Sunny

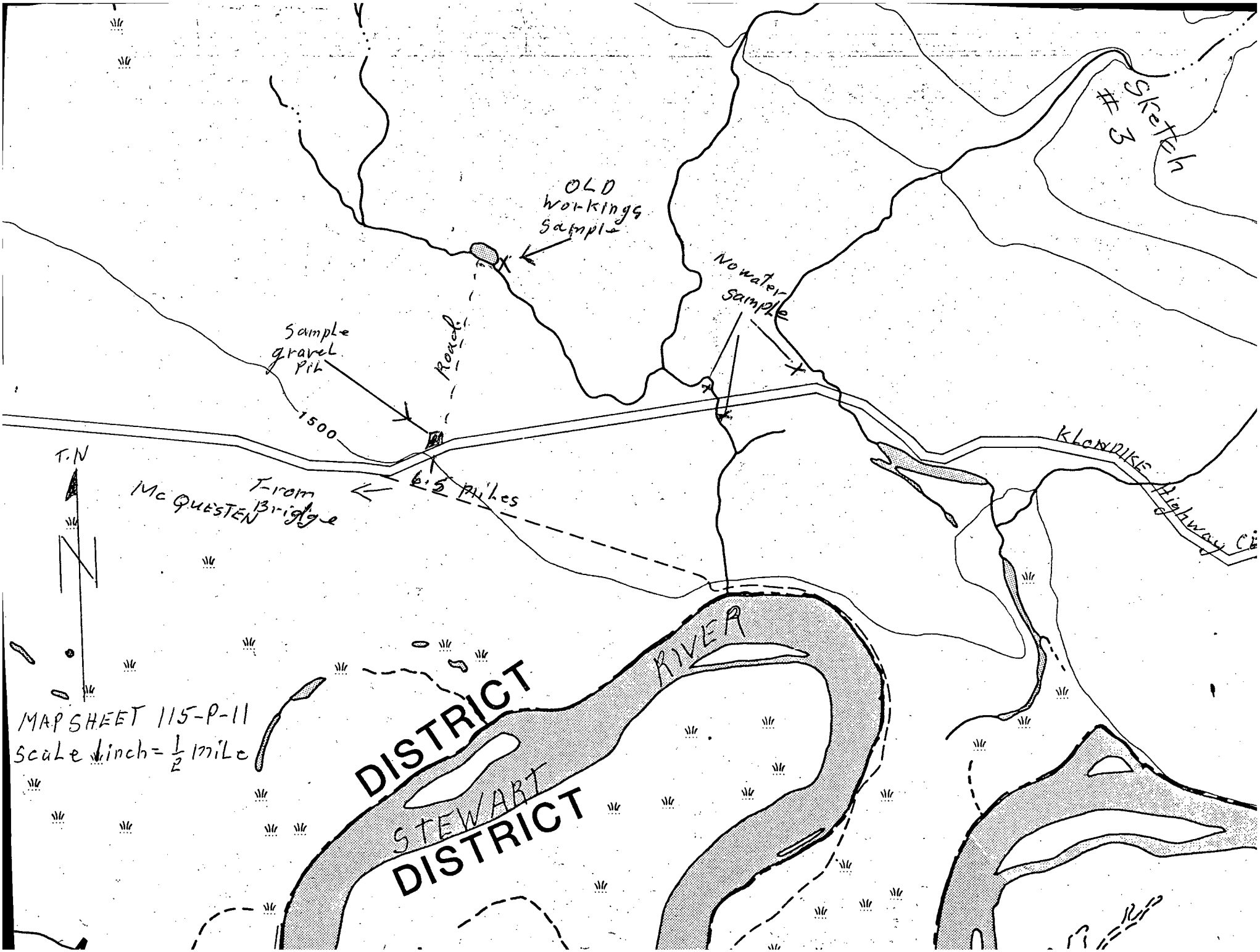
Worked more on Road to claim
set up talit Blasted Hole tested
sample gravel 2 ft Down specs of gold.

Day 10 May 21/90

Weather

Sunny with showers.

Went south on Highway 6.5 miles
walked in to lake North side of Road
took samples at lake south end & at
road gravel pit, small specs of gold
work had bin Bone at south end of
Lake about 10 years ago. will likely
go back in & get longer samples later.
see sketch # 3 → over-



MAP SHEET 115-P-11
Scale 1 inch = 1/2 mile

Day 11 May 22/90

weather
Rain

Rained all night & Day panned out
some samples & Book work up to date.

Day 12 May 23/90

weather
showers.

Checked stream south ^{East} of McQuesten Bridge
7.8 miles see sketch #3 ← Not very
good ~~test~~ results, one to go Back
& get 5 gold samples after sluice Box is set up.
No water in creek.

Day 13 May 24/90

weather

sunny with cloudy intervals
Took samples ~~on~~ at a few spots on the
way to Dawson City for gold show.

May 25/90

26/90

May 27/90 Made a deal on Nortech #10
Machine, after demonstration. Left for
Flat Creek.

Day 14 May 28/90

weather

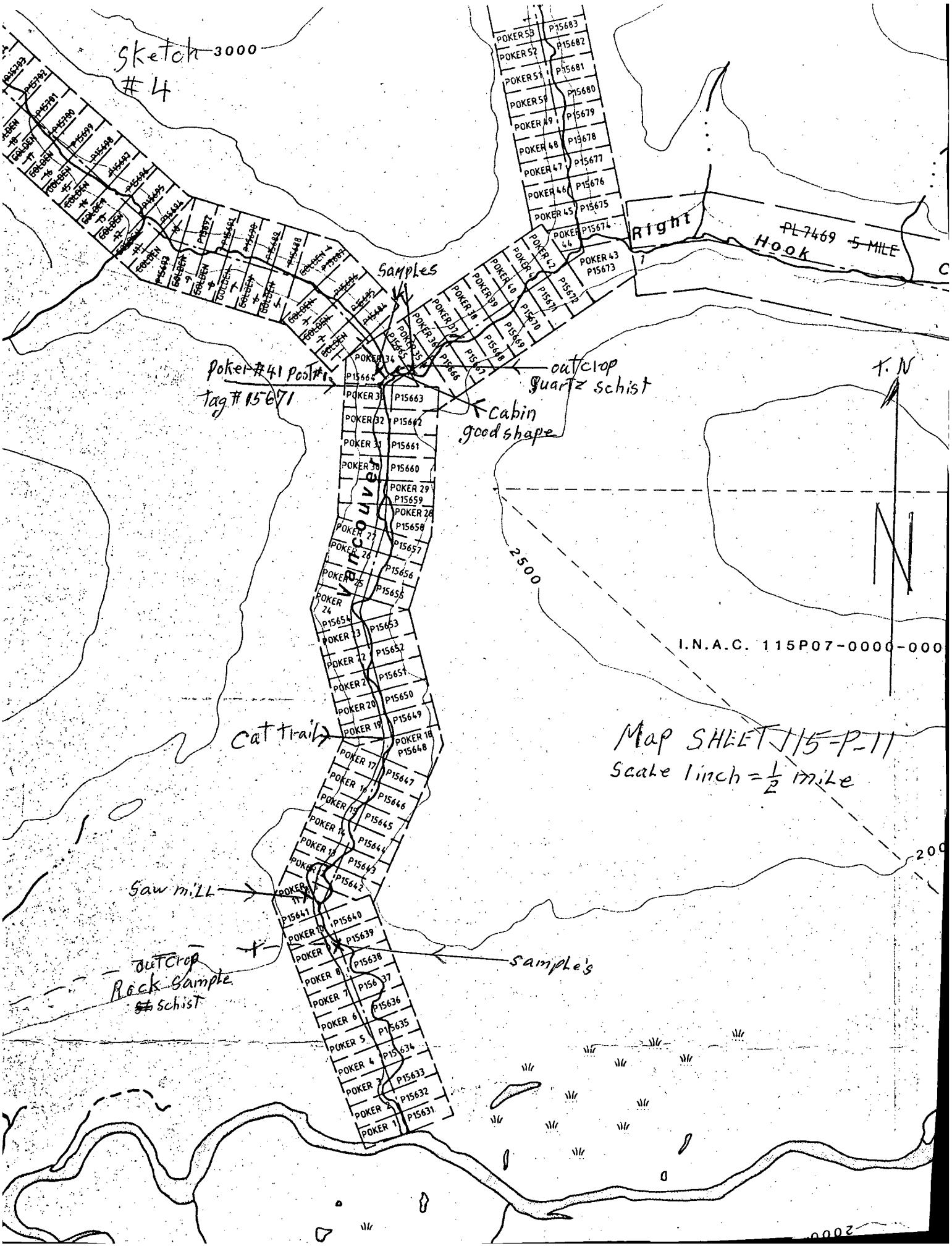
sunny with showers in Evening
panned out samples taken at Flat Creek
~~up~~ up stream small specks of gold took
samples at a few pits on the way Back to
McQuesten River. a quit a few ~~for~~ people
at Flat Creek did not find what I was
looking for.

Day 15 May 29/90

weather

sunny cloudy intervals 8:pm Rain
panned out samples taken on trip from
Dawson to McQuesten Microscopic gold in
most samples.

Sketch 3000
#4



Poker #41 Post #
tag # 15671

outcrop
Quartz schist
Cabin
good shape

cat trail

Saw mill

outcrop
Rock sample
schist

sample's

I.N.A.C. 115P07-0000-000

Map SHEET 115-P-11
Scale 1 inch = 1/2 mile



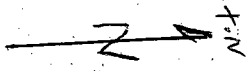
Right

PL 7469 5 MILE
Hook

2500

200

2000



EST 115-P-11

h = 1/2 mile

Sketch #5

PL 7947

2000

partridge

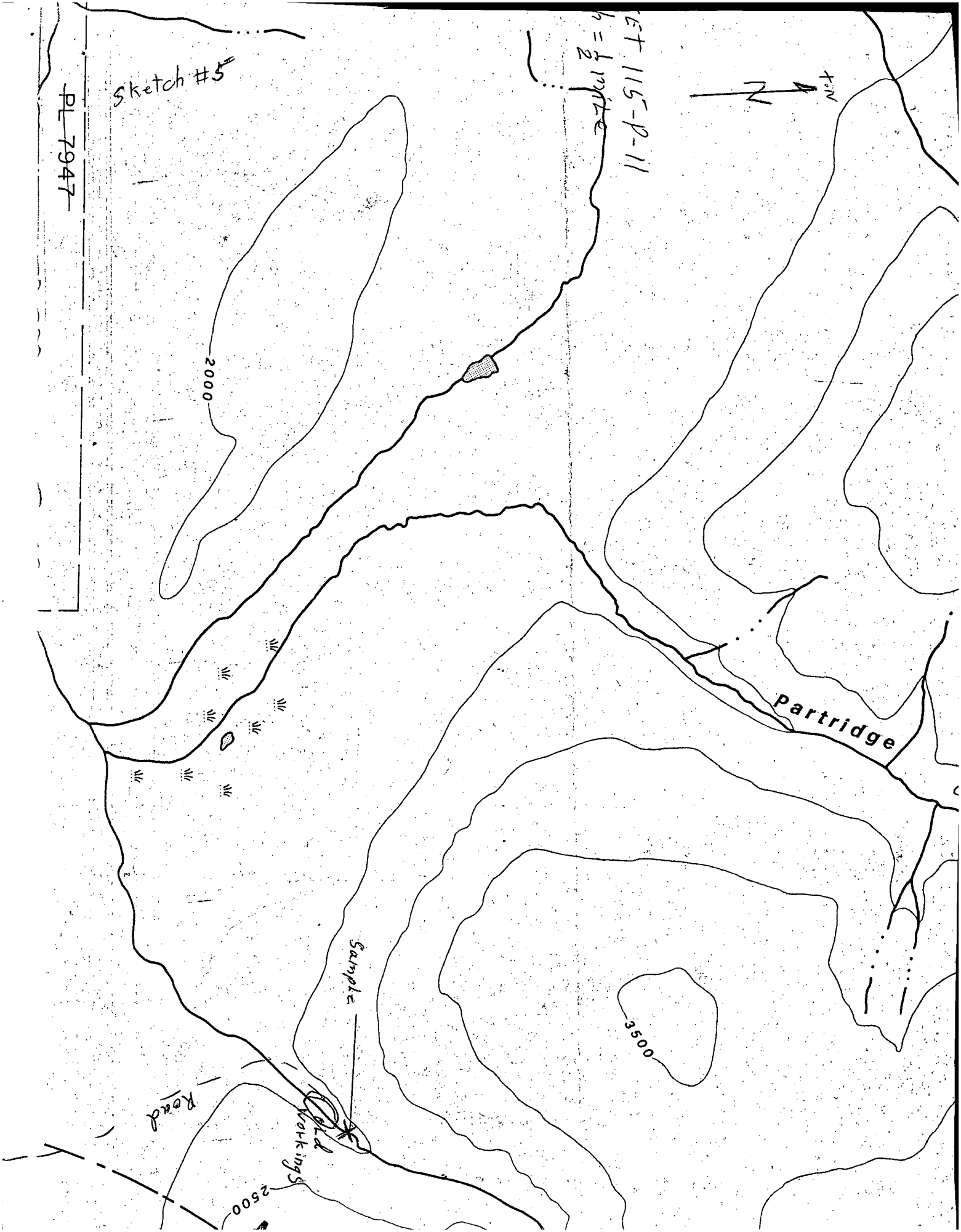
3500

Sample

Road

Old
Workings

2500



Day 16 May 30/90

weather
cloudy

Rain all night cleared up at 10: AM.

went with 3 mules to Vancouver Creek
checked rock out camp on Hill to Vancouver Creek
quartzite schist took samples of tailing pile
a quite a bit of fine gold in it. Bear got tent.

Day 17 May 31/90

weather
cloudy

went to Whitehorse for supplies &
check on money from prospectors assistance.
seen 4 Bears on the way down.

arrived Back at McQuesten River on June 9/90

June

Day 18

June 10/90

weather

sunny with showers

took Chain saw cut trees out of Road
to Vancouver Creek took more samples
on Vancouver Creek & partridge Creek.
used 5 gal pails. saw mill on Vancouver
Creek not used for 2 or 3 years. see sketch,

See sketch ↙

Day 19 June 11/90

weather

sunny with showers

got stuck going in to camp site on
Chain Chew 1. cut line between
Chew 1 & Chew 2 chain left samples there

Mc. QUESTEN RIVER ISLAND

CLAIM SHEET
115-P-11

#1 Post

#2 Post

Scale 1 inch = 100 FT.

Tailing Pond
12x9x6

SLUICE BOX

Tent

Camper site

HIGH WATER Creek

CLEARING

CHEV. I

P16106

ROAD

330 Mag N

BAD HOLE

FIRE LINE

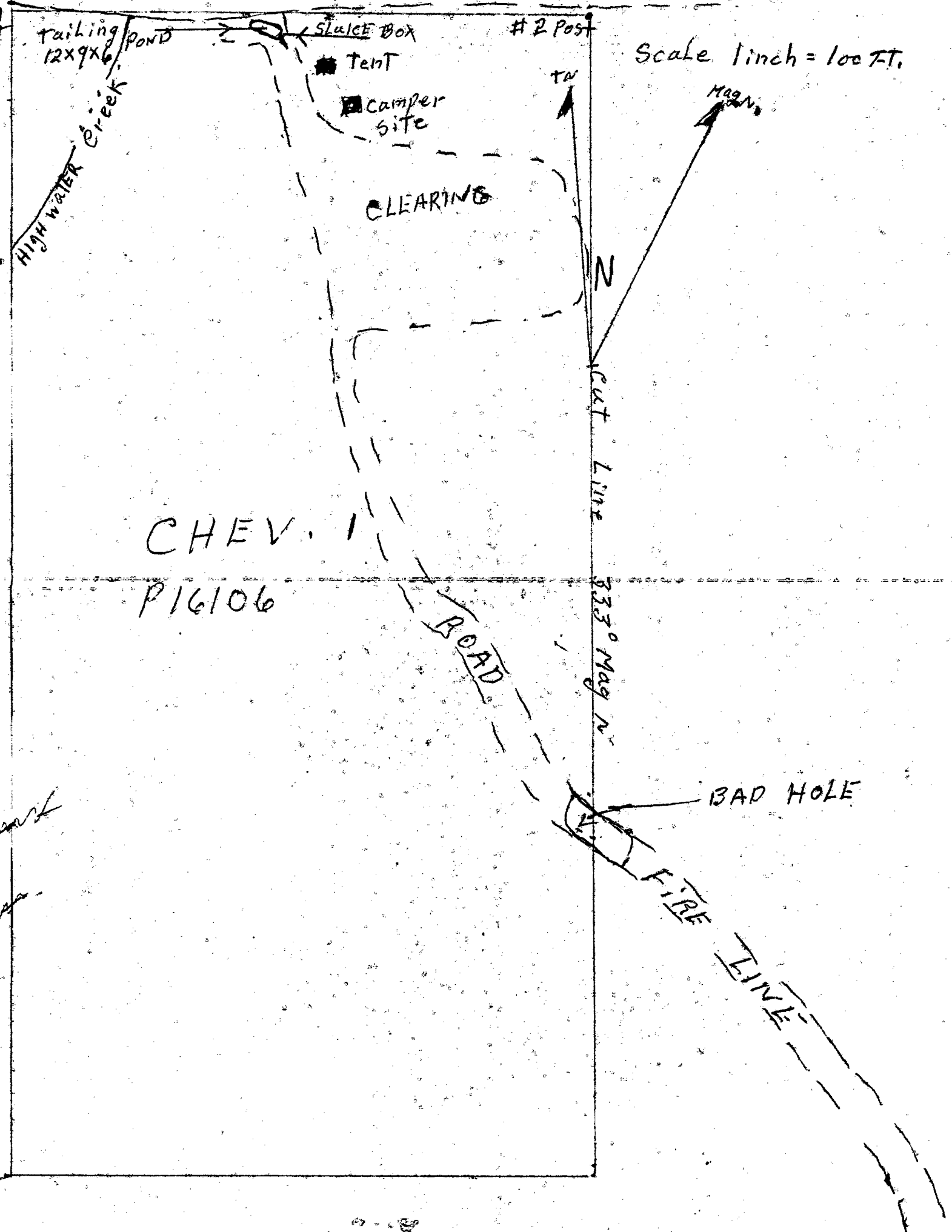
Cut Line

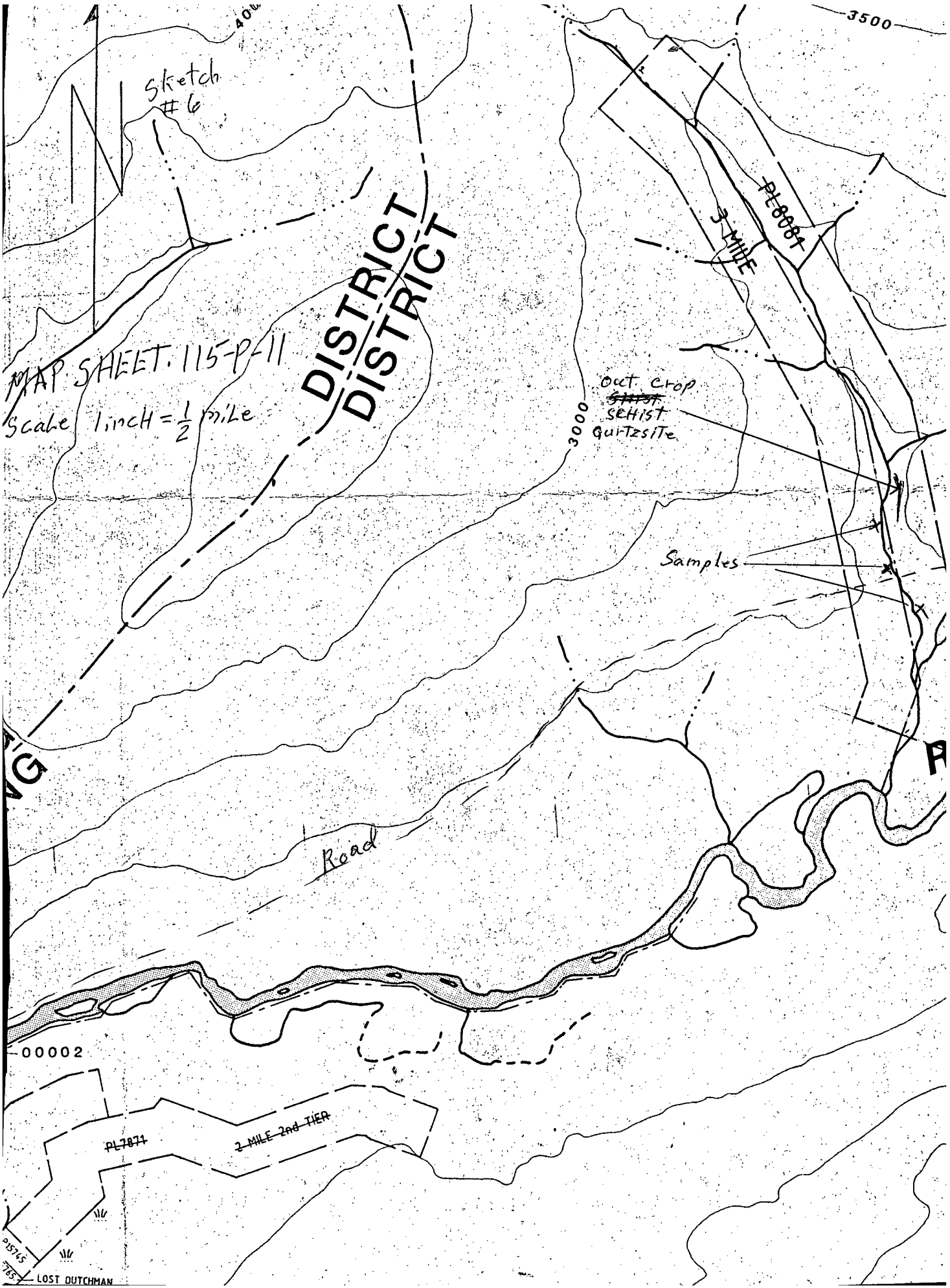
N

TV

Mag N

~~mark~~
~~mark~~





Sketch #6

MAP SHEET. 115-P-11

Scale 1 inch = 1/2 mile

DISTRICT
DISTRICT

3 MILE
PL 8004

out crop
~~SEHIST~~
SEHIST
Quartzite

Samples

Road

PL 7871

2 MILE 2nd TIER

00002

3500

3000

Day 20 June 12/90 weather sunny
Blasted Hole Larger 12 ft x 9 x 6 ft at camp site
set up sluice box sluiced out about 3
5^g pairs of samples got good Colours.
sluice Box set up on Chew 1 claim see sketch #1

Day 21 June 13/90 weather
sunny & hot
went up Vancouver Creek Road checked
out creek this side of Vancouver Creek.
took samples no gold in stream samples.
But small specks in the clay samples. See sketch #6

Day 22 June 14/90 weather cloudy
went to camp site put more samples through
sluice Box still getting good Colours in Box
Slow going to much black sand.

Day 23 June 15/90 weather
Rained all night
Rained all day went up to see
pilot at air port on the Stewart River
worked on Boock's.

Day 24/ June 16/90 weather
cloudy with showers
put last of samples through sluice Box
~~at~~ changed sloping of sluice Box.

Day 25 June 17/90 weather
Rained all night
Rained till 11:30 AM showers after
noon. wife sick worked around
camp.



Sluice Box For Sampling
Cher #1 Claiter

Day 26 June 18/90

weather

Rainy

Went to Whitehorse to see about check from prospector assist seen Dan Downing. took wife to see Doctor June 19 in town June 20/90 Whitehorse to McQueston, checked on aircraft at air port still out of order.

Day 27 June 21/90

weather

Rain

Rained Hard all night & all day. all Roads to wet to travel. re set Radio aerial up. works ok now.

Day 28 June 22/90

weather

Sunny

Went up Vancouver Creek panned up 2 mile from old mine site no gold in samples see sketch # 4

Day 29 June 23/90

weather

Sunny with showers.

up Vancouver Creek to Thoroughfare Creek Cabin at junction North East side of Creek Claim # PATER # 41

Post #1 tag 15671 took samples on Bath Creeks out crop on Vancouver quartz schist. see sketch # 4

eat fruit up Vancouver Creek

Day 30 June 24/90

weather

Sunny Cloudy

put samples through sluice box going to spend next few days putting sample through sluice box & sampling chert claim see picture ←

Day 31 June 25 & 26/90

Weather
Cloudy sunny intervals

Worked on Claim sluicing my tailings from sampling. got as much gold as in first sluicing only getting about 40% of gold. samplend check Claim got quite a bit of gold. Estimate 12 oz yard per ounce of gold. if you can save it.

June 27/90
Day 32 Check Road ~~in~~ from Mayo in to McQuesten at forty mile Creek. then to Whitehorse.

Myd or Curved



Bondar-Clegg & Company Ltd.
 5420 Canotek Road
 Ottawa, Ontario
 K1J 8X5
 (613) 749-2220 Telex 053-3233

MYRL CURRIE
 C/O BONDAR-CLEGG & CO.
 136 INDUSTRIAL ROAD
 WHITEHORSE, YT Y1A 2V1

Invoice : V078629
 Date : 10-DEC-90
 Report No : V90-36269.4
 Project : NONE GIVEN
 Reference:

ANALYSES:

4 ANALYSES OF Au	@ \$30.00/SAMPLE	\$ 120.00
1 ANALYSES OF Au	@ \$10.25/SAMPLE	\$ 10.25
1 ANALYSES OF "ASSAY PLATINUM GROUP"	@ \$120.00/SAMPLE	\$ 75.60
		\$ 44.40

SAMPLE PREPARATION:

5 SAMPLES OF PULVERIZING	@ \$ 2.50/SAMPLE	\$ 12.50
--------------------------	------------------	----------

Invoice Total: \$ 262.75 Cdn

\$183.75 PAID OCT 5/90

\$75.00 PAID JAN 15/91

P/A
 in
 Myrl's
 File
 For 1990

THIS IS A PROFESSIONAL SERVICE
 ACCOUNTS DUE WHEN RENDERED

Bondar-Clegg & Company Ltd.
130 Pemberton Ave.
North Vancouver, B.C.
V7P 2R5
(604) 985-0681 Telex 04-352667



Certificate of Analysis

A DIVISION OF INCHCAPE INSPECTION & TESTING SERVICES

REPORT: V90-36269.4 (COMPLETE)

REFERENCE INFO:

CLIENT: MYRL CURRIE
PROJECT: NONE GIVEN

SUBMITTED BY: M. CURRIE
DATE PRINTED: 6-DEC-90

SAMPLE TYPES	NUMBER	SIZE FRACTIONS	NUMBER	SAMPLE PREPARATIONS	NUMBER
C CONCENTRATE (PAN/HM)	5	2 -150	5	PULVERIZING	5

NOTES: = indicates SEE REMARKS

REMARKS:

= THIS IS THE OPT AVERAGE FROM 3 ASSAYS OF THE
SAMPLE.

AU MGS IS THE TOTAL WT OF AU IN THE SAMPLE.

=WE WERE UNABLE TO OBTAIN RESULTS FOR THESE
ELEMENTS THROUGH INAA DUE TO THE HIGH AU
IN THIS SAMPLE. THE RESULTS WE GOT VIA THE
FIRE ASSAY LEAD COLLECTION METHOD INDICATE

THAT THE PLATINUM GROUP ARE NOT LIKELY PRESENT.

REPORT COPIES TO: MYRL CURRIE

INVOICE TO: MYRL CURRIE

Bondar-Clegg & Company Ltd.
 130 Pemberton Ave.
 North Vancouver, B.C.
 V7P 2R5
 (604) 985-0681 Telex 04-352667



Certificate
 of Analysis

A DIVISION OF INCHCAPE INSPECTION & TESTING SERVICES

REPORT: V90-36269.4 (COMPLETE)

REFERENCE INFO:

CLIENT: MYRL CURRIE
 PROJECT: NONE GIVEN

SUBMITTED BY: M. CURRIE
 DATE PRINTED: 6-DEC-90

ORDER	ELEMENT	NUMBER OF ANALYSES	LOWER DETECTION LIMIT	EXTRACTION	METHOD
1	Au Gold	5	0.002 OPT		Fire Assay
2	Pt Platinum	0	PPB		Inst. Neutron Activ.
3	Pt Platinum	1	0.002 OPT		Fire Assay
4	Pd Palladium	1	PPB		Inst. Neutron Activ.
5	Pd Palladium	1	0.002 OPT		Fire Assay
6	Rh Rhodium	1	PPB		Inst. Neutron Activ.
7	Rh Rhodium	1	0.001 OPT		Fire Assay
8	Ir Iridium	0	PPB		Inst. Neutron Activ.
9	Os Osmium	0	PPB		Inst. Neutron Activ.
10	Ru Ruthenium	0	PPB		Inst. Neutron Activ.
11	Au Mg Total Mg Gold	4	0.002 MG		Fire Assay
12	Weight Sample Weight 0.1 gm	4	0.1 GM		

Bondar-Clegg & Company Ltd.
 130 Pemberton Ave.
 North Vancouver, B.C.
 V7P 2R5
 (604) 985-0681 Telex 04-352667



Certificate
 of Analysis

A DIVISION OF INCHCAPE INSPECTION & TESTING SERVICES

REPORT: V90-36269.4

DATE PRINTED: 6-DEC-90

PROJECT: NONE GIVEN

PAGE 1

SAMPLE NUMBER	ELEMENT UNITS	Au OPT	Pt PPB	Pt OPT	Pd PPB	Pd OPT	Rh PPB	Rh OPT	Ir PPB	Os PPB	Ru PPB	Au Mg MG	Weight GM
C2 BEV1		81.750										48.850	17.4
C2 BRAN1		38.120										15.550	11.9
C2 CHEV1		133.650										136.630	29.8
C2 WALT1		7.542										8.300	32.1
C2 VAN B		85.333=	=	<0.002	<2000	<0.002	<50	<0.002	=	=	=		

[Empty box]

[Empty box]


[Empty box]

[Empty box]

[Empty box]

[Empty box]

[Empty box]

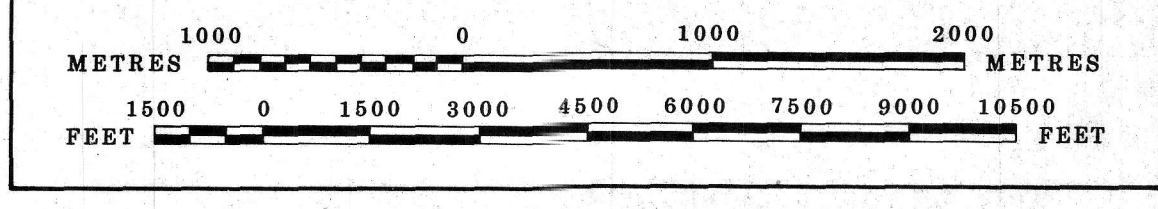
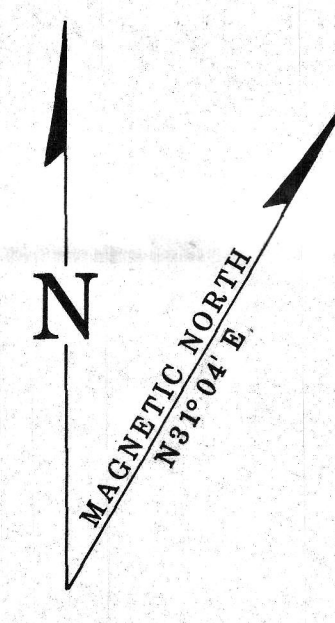

 Registered Assayer, Province of British Columbia

115P-11
QUARTZ & PLACER

LATITUDE 68°30' TO 68°45'
 LONGITUDE 137°00' TO 137°30'

ISSUED UNDER THE AUTHORITY OF THE MINISTER
 OF
 INDIAN AFFAIRS AND NORTHERN DEVELOPMENT

SCALE 1:30,000

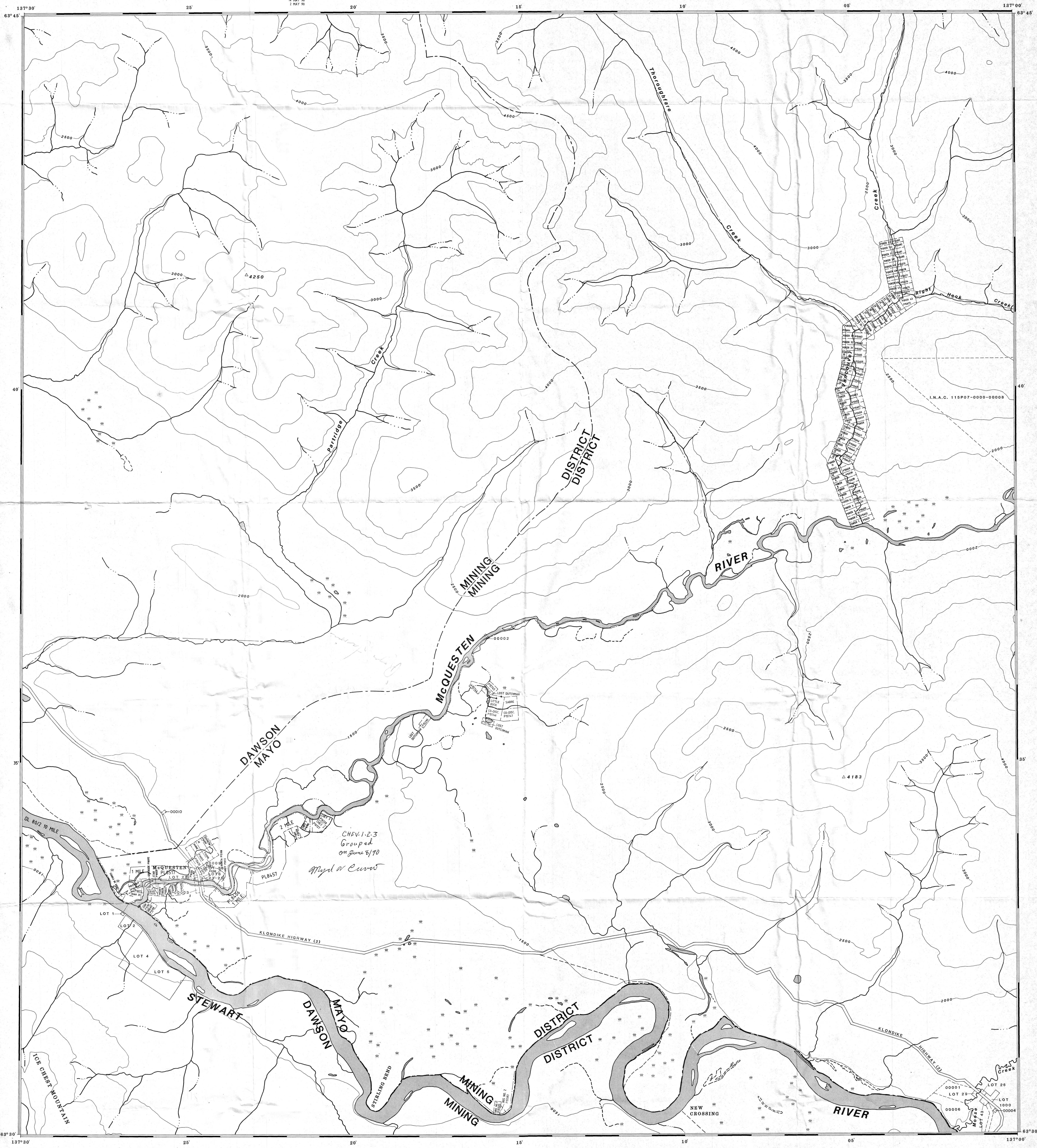



NOTE:
 THIS MAP IS ISSUED AS A PRELIMINARY GUIDE
 FOR WHICH THE DEPARTMENT OF INDIAN AFFAIRS
 AND NORTHERN DEVELOPMENT WILL ACCEPT NO
 RESPONSIBILITY FOR ANY ERRORS, INACCURACIES
 OR OMISSIONS WHATSOEVER.

TOPOGRAPHY COMPILED FROM 1:50,000
 NATIONAL TOPOGRAPHIC SERIES.
 CONTOUR INTERVAL 500 FEET.
 SURVEY INFORMATION COMPILED FROM
 LEGAL SURVEYS, BY DRAFTING SERVICES.

115P-13	115P-14	115P-15
115P-12	115P-11	115P-10
115P-8	115P-6	115P-7

MAYO 6 APR. 1990
 DAWSON 16 FEB 1988
 7 JUNE 93
 14 MAY 93
 2 MAY 93



Refer to this map as: 115 P EDITION 3 ASE SERIES A 502



100,000 M. SQUARE IDENTIFICATION

GRID ZONE DESIGNATION	8V
100,000 M. SQUARE IDENTIFICATION	LF MF LE ME

TO GIVE A REFERENCE TO NEAREST 1000 METRES

EXAMPLE: CABIN

SQUARE: Read letters of 100,000 m. square LF

EASTING: Read number on grid line immediately to left of point Estimate tenth of a square from this line eastward to point.

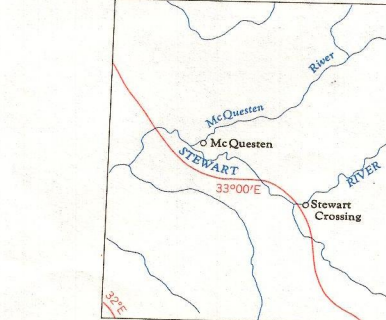
NORTHING: Read number on grid line immediately below point Estimate tenth of a square from this line northward to point.

MILITARY GRID REFERENCE (to nearest 1,000 metres) LF8779

If reporting beyond 18° in any direction, prefix Grid Zone Designation as: 8VLF8779

TEN THOUSAND METRE UNIVERSAL TRANSVERSE MERCATOR GRID ZONE 8

THE DECLINATION OF THE COMPASS NEEDLE 1962
DECLINAISON MAGNETIQUE EN 1962



The declination of the compass needle is decreasing 3.9 minutes annually.
La déclinaison magnétique décroît de 3.9 minutes annuellement

Compiled, 1960, by the SURVEYS AND MAPPING BRANCH, DEPARTMENT OF MINES AND TECHNICAL SURVEYS, from large scale maps. Printed 1963.

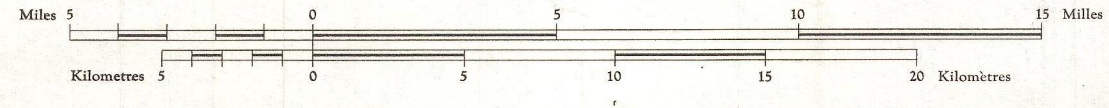
Copies may be obtained from the Map Distribution Office, Department of Mines and Technical Surveys, Ottawa.

Road	Road	Road	Road
hard surface, all weather	parvé, toute saison	more than 2 lanes	2 lanes
loose surface, all weather	de gravier, toute saison	2 lanes or more	less than 2 lanes
wagon, cart track	chemin de terre	2 voies ou plus	moins de 2 voies
Railway, normal gauge	Chemin de fer, écartement normal	voie simple	voie double
Depression contours	Courbes de cuvette	single track	double track
Spot elevation, in feet	Repère de nivellement en pieds	single track	double track
Power transmission line	Ligne de transport d'énergie	single track	double track

McQUESTEN

YUKON TERRITORY

Scale 1:250,000 Échelle

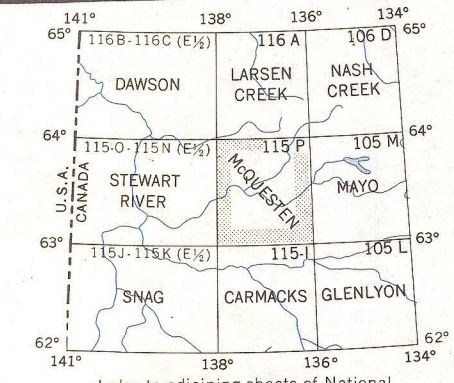


Transverse Mercator Projection
North American Datum 1927
Contour Interval 500 feet
Elevations in feet above Mean Sea Level

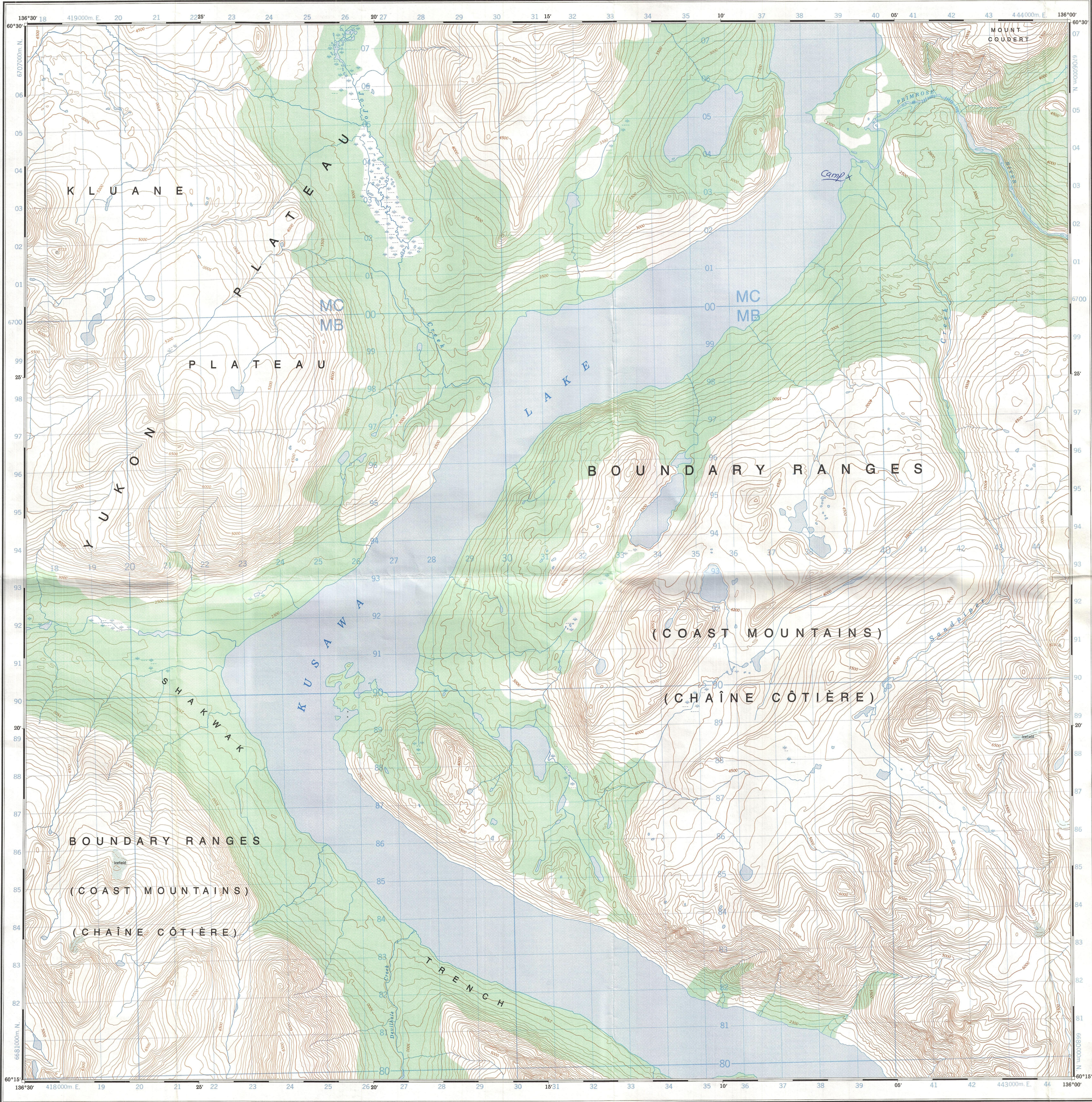
Rédigée en 1960, par la DIRECTION DES LEVÉS ET DE LA CARTOGRAPHIE, MINISTÈRE DES MINES ET DES LEVÉS TECHNIQUES, d'après les cartes à large échelle. Imprimée en 1963.

Ces cartes sont en vente au Bureau de distribution des cartes, ministère des Mines et des Relevés techniques, Ottawa.

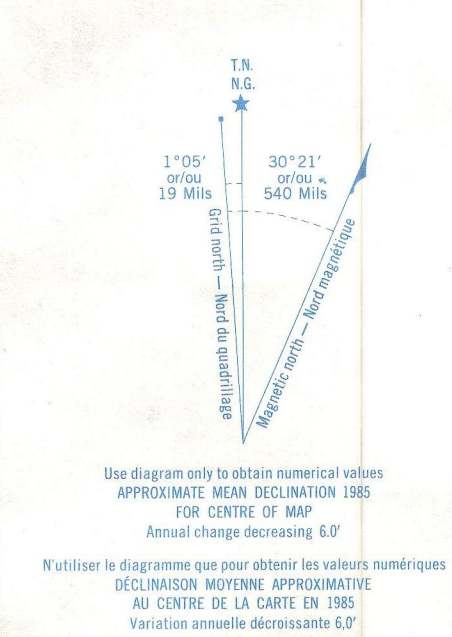
Town	Ville	Stream	Cours d'eau
Village or Settlement	Village ou hameau	intermittent or dry	intermittent ou à sec
Post office	Bureau de poste	intermittent lake	Lac intermittent
School	École	Rapids; falls	Rapides; chutes
School	École	Marsh or swamp	Marais ou marécage
Boundary monument	Borne frontière	Lighthouse	Phare
Horizontal control point	Point géodésique	Airport	Aéroport
		Seaplane base	Base d'hydravions



Index to adjoining sheets of National Topographic System
Tableau d'assemblage du Système de Référence Cartographique National

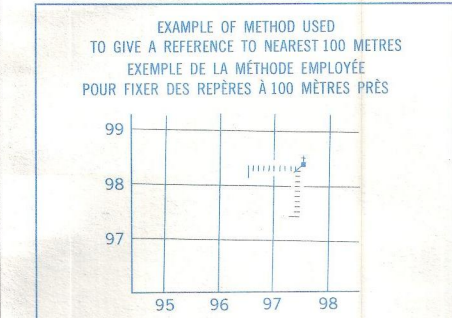


Military users, refer to this map as: **SERIES A 722 SÉRIE**
 Référence de cette carte pour usage militaire: **MAP 115 A/8 CARTE**
 ÉDITION 2 MCE ÉDITION



ONE THOUSAND METRE
 UNIVERSAL TRANSVERSE MERCATOR GRID
 ZONE 8
 QUADRILLAGE UNIVERSEL TRANSVERSE DE MERCATOR
 DE MILLE MÈTRES

GRID ZONE DESIGNATION DESIGNATION DE LA ZONE DU QUADRILLAGE	100 000 m SQUARE IDENTIFICATION IDENTIFICATION DU CARRÉ DE 100 000 m
67	MC MB



REFERENCE POINT POINT DE REPÈRE	CHURCH - EGLISE (as above) (ci-dessus)
EASTING: Read number on grid line immediately to left of point. ABSCISSE: Note le chiffre de la ligne de quadrillage immédiatement à gauche du repère.	97
Estimate tenths of a square from this line eastward to point. Estimer le nombre de dixièmes du carré entre cette ligne et le repère en direction est.	5 975
NORTHING: Read number on grid line immediately below point. ORDONNÉE: Note le chiffre de la ligne de quadrillage immédiatement en dessous du repère.	96
Estimate tenths of a square from this line northward to point. Estimer le nombre de dixièmes du carré entre cette ligne et le repère en direction nord.	4 964
GRID REFERENCE: RÉFÉRENCE AU QUADRILLAGE	975964
Nearest similar grid reference 100 000 metres La prochaine référence similaire est à 100 000 mètres	

137°00'	135°30'	
66°45'	66°45'	
115 A/10	115 A/9	105 D/12
115 A/7	115 A/8	105 D/5
115 A/2	115 A/1	105 D/4
66°00'	66°00'	

Index to adjoining Maps of the National Topographic System
 Tableaux d'assemblage du Système national de référence cartographique

Produced by the SURVEYS AND MAPPING BRANCH,
 DEPARTMENT OF ENERGY, MINES AND RESOURCES.
 Updated from aerial photographs taken in 1979. Published in 1986.
 Copies may be obtained from the Canada Map Office,
 Department of Energy, Mines and Resources, Ottawa,
 or your nearest map dealer.
 © 1986. Her Majesty the Queen in Right of Canada,
 Department of Energy, Mines and Resources.

SANDPIPER CREEK
 YUKON TERRITORY TERRITOIRE DU YUKON

Information concerning bench marks and horizontal survey monuments can be obtained from Geodetic Survey, Surveys and Mapping Branch, Ottawa.
 Pour tout renseignement concernant les repères et bornes altimétriques, s'adresser aux levés géodésiques, Division des levés et de la cartographie, Ottawa.

Établi par la DIRECTION DES LEVÉS ET DE LA CARTOGRAPHIE,
 MINISTÈRE DE L'ÉNERGIE, DES MINES ET DES RESSOURCES.
 Mise à jour à l'aide de photographies aériennes prises en 1979. Publiée en 1986.
 Ces cartes sont en vente au Bureau des Cartes du Canada,
 ministère de l'Énergie, des Mines et des Ressources, Ottawa,
 ou chez le vendeur le plus près.
 © 1986. Sa Majesté La Reine du Chef du Canada,
 Ministère de l'Énergie, des Mines et des Ressources.

