
PROSPECTING REPORT
SUBMITTED BY: GEOFF BARRINGTON

ON

SWANSON CREEK
VENUS CREEK
BIG THING CREEK

FOR

YUKON MINING INCENTIVES PROGRAM

December 1994

94-027

SWANSON CREEK

Location

Map Sheet #115-G-8, Latitude 61° 20' : Longitude 138° 16'
(See maps attached)

Access

By road to Gladstone Creek. This road takes off from the road to Silver City at Kluane Lake and follows the north side of the lake for approximately 35 miles of 4 x 4 road. Once at Gladstone Creek, the road goes upstream for nine miles to its end. From this point, access was made by helicopter.

Previous Work

Previous work done on Swanson Creek is unknown. There is a rumour of hand mining and five old wooden sluice boxes were found currently, but there was no sign of excavation and the author cannot make a connection to any kind of production handwork.

Current Work

Work began on August 30, 1994. Three persons spent a total of 17 days on Swanson Creek including mobilization and demobilization. The work was divided into two parts. The first part was approximately six miles up from the mouth of the creek on the North Fork and covered approximately 800 yards of the creek. Seven holes were hand dug to the water table, the results were panned and no gold was found.

The second part of the work was from the main fork down to 200 yards below the canyon and covered approximately one and one-half miles. Eleven holes were hand dug to the water table and seven holes yielded gold. One to two colours per pan were found. The average being one colour per pan. The colours were up to 1 x 1 mm in size, flat, with some dendritic forms, rough edges and some quartz inclusions. The black sand has a fairly low amount of magnetite in it and garnets were commonly found. Clay bedrock was found in one hole at 3'. On top of the bedrock, two colours were panned. The size of these colours was approx. 1mm³ and was the coarsest gold found to date.

Conclusions and Recommendations

Conclusions about the property remain uncertain due to the water problem and incomplete testing. The gold found below the fork was fairly consistent and prolific for such shallow testing. Bulk yardage tests with a hoe to bedrock are recommended for the future.

VENUS CREEK

Location

Map Sheet 115-G-8. Latitude 61° 20' : Longitude 138° 10'
(See maps attached)

Access

By road to Gladstone Creek and then up Gladstone Creek nine miles to the end of the road. From here, access was made by helicopter.

Previous Work

Previous work on Venus Creek is unknown. There is a rumour that Venus Creek has placer gold.

Current Work

Work began on September 16, 1994. A series of 14 shallow holes averaging four feet were hand dug to the water table. Two people spent a total of 11 days including mobilization and demobilization. The area covered by the test holes was approx. three miles. Results were taken by panning gold that was found in four out of the 14 holes dug. One to two colours per pan were found. The colours were about 1mm x 1mm in size, flat in shape and slightly rough. The black sand has a fairly low amount of magnetite in it.

Conclusions and Recommendations

Conclusions are uncertain because of the water problem. To complete testing, bedrock tests would have to be done, but this would be fairly hard to do because the location is bad for access. Also, Venus Creek appears to have a very small gravel reserve.

Recommendations are that no further testing be carried out.

BIG THING CREEK

Location

Map Sheet 105-D-2, Latitude 60° 4' : Longitude 135° 35'
(See maps attached)

Access

By road to approx. seven miles south of Carcross to where Big Thing Creek intersects the highway and then by foot both up and down stream.

Previous Work

There is rumour of hand work and about 15 years ago a cat-trail was put in and some shallow cat work (stripping) was done.

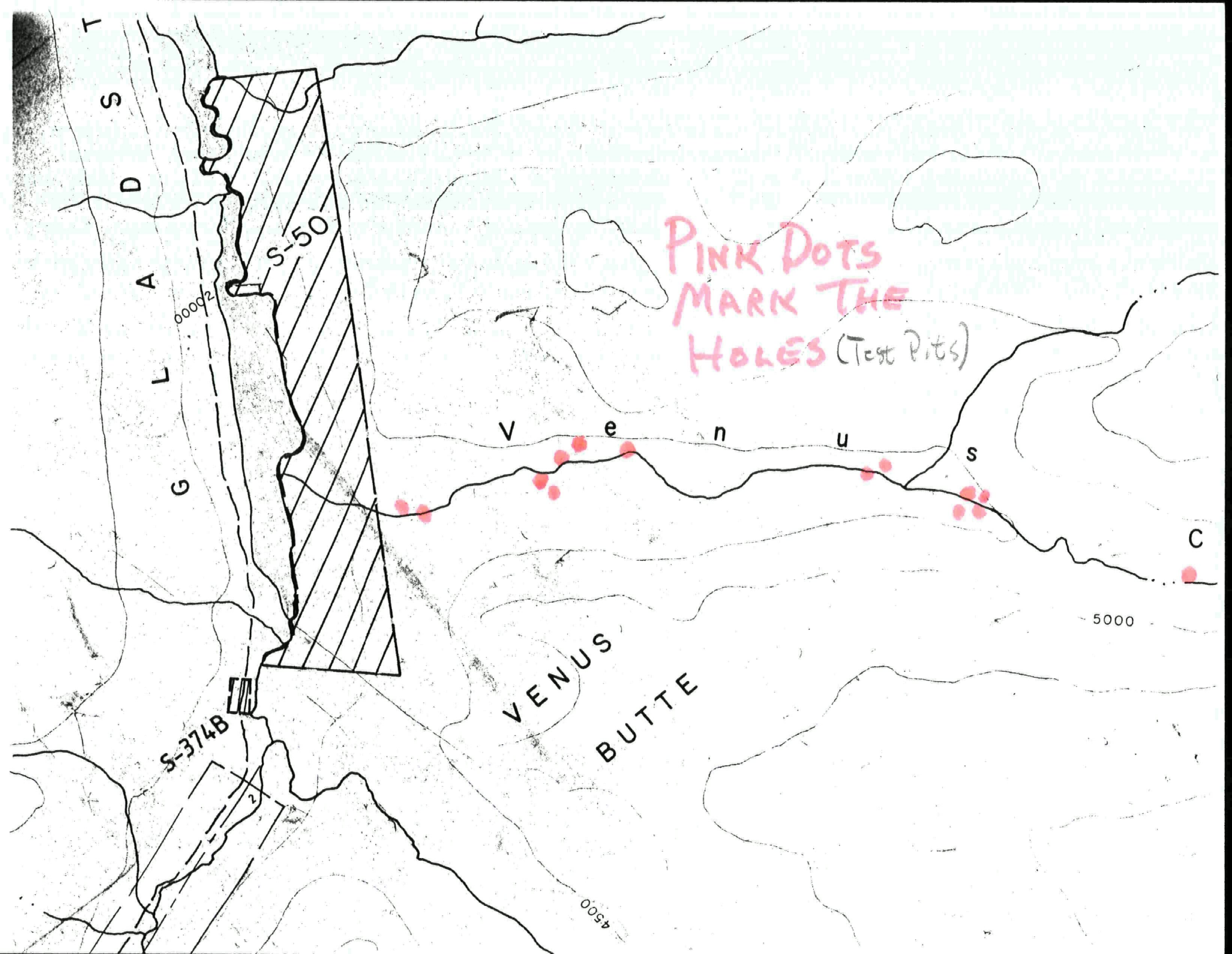
Current Work

Work began on October 6, 1994. One person spent eight days on Big Thing Creek, including mobilization and demobilization. A series of six shallow holes averaging four feet were hand dug to the water table. Results were taken by panning. No gold was found. As well, there was only small amounts of light black sand.

Conclusions and Recommendations

Conclusions about the property remain uncertain due to incomplete testing. Bedrock tests would be quite feasible with a hoe because of good access. However, there were no indicators found.

No further testing is recommended for the future.



T
S
D
A
L
G

S-50

00002

S-374B

PINK DOTS
MARK THE
HOLES (Test Pits)

VENUS
BUTTE

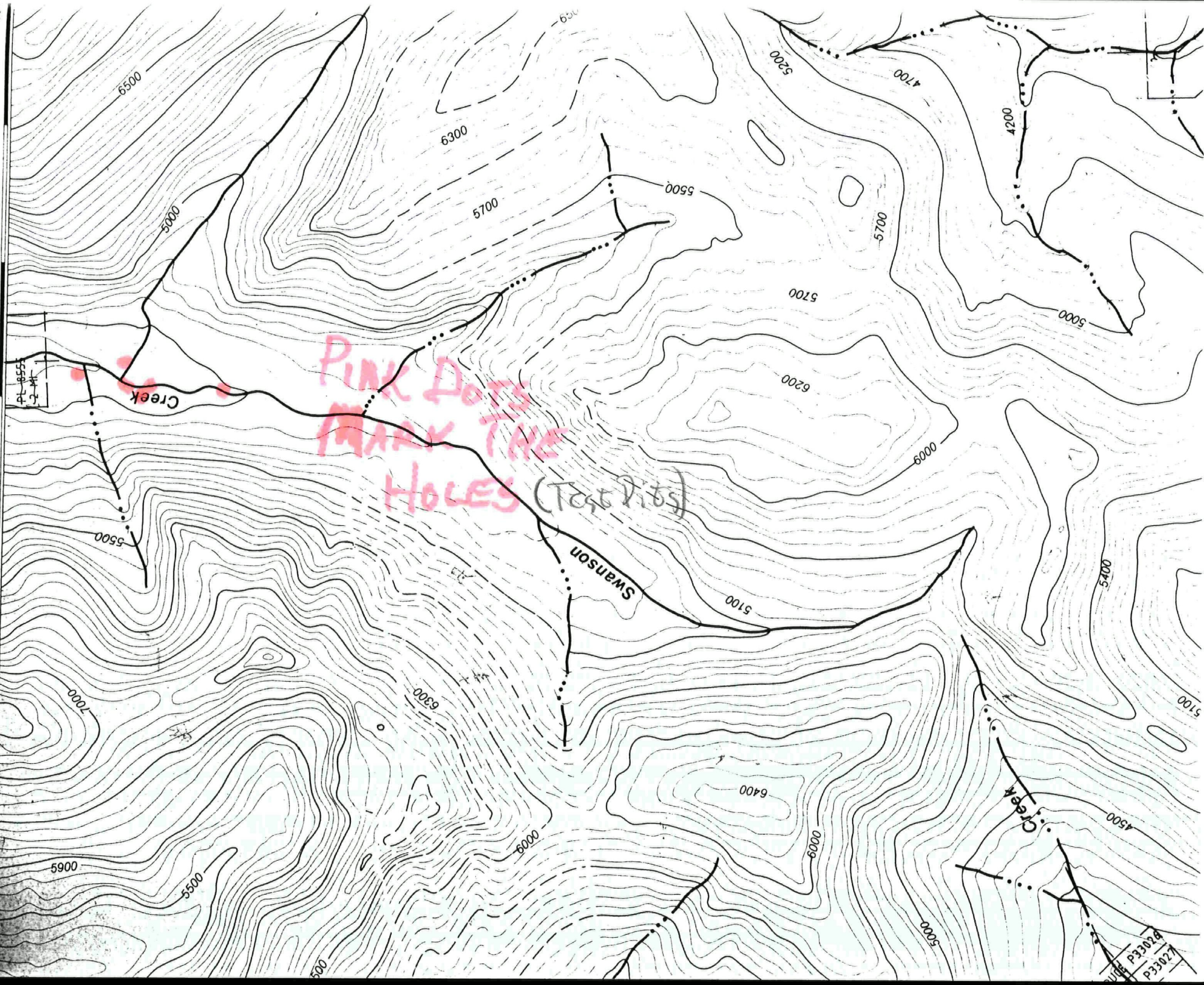
5000

4500

C

20

13



Pink Dots
 MARK THE
 HOLES (TEST PITS)

Creek

Swanson

Creek

Sheet P33028
 P33027

PL9376

5 MILE

4000

PINK DOTS MARK THE HOLES (Test pits)

0000

PL-8555

2 MI

PL 8567 1st TIER

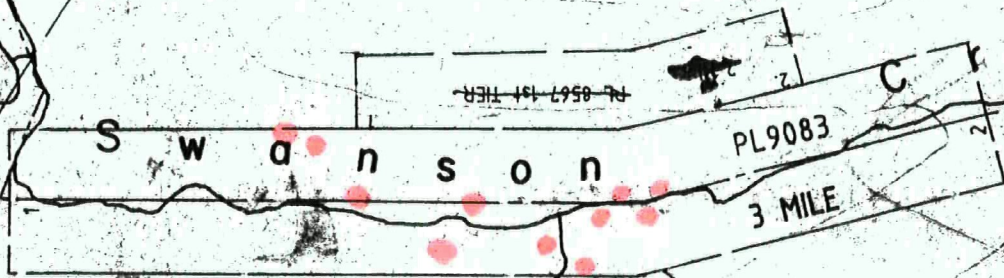
PL9083

3 MILE

S w a n s o n

C r e e k

2 MILE





3500

Donald

Creek

0050

2500

6009

BRUTE MTN

SUGARLOAF HILL

BARB

PAT

TAP

R-7

PINK DOTS MARK THE HOLES (Test Pits)

Thing Creek

Creek

HIGHLANDS

MONTANA MOUNTAIN

TAGISH

N-YAG

Conrad

Lot 17

Lot 1018

Lot 1021

SANDPIPER

Copper

A R M

I N D Y

3000