

YEIP

94-043

1994

94-043

**MIKE BROWN
51 GREEN CRESCENT
WHITEHORSE, YUKON
Y1A 4R8**

**PHONE: 403 668-6886
FAX: 403 667-6438**

February 13, 1994

**TECHNICAL REPORT FOR THE UPPER LIVINGSTONE CREEK SUMMER PLACER
ACTIVITIES:**

Location & Access:

Map #105-E-8

Two Mile placer lease 8861. Latitude 61° 12.5' : Longitude 134° 20'

The Upper Livingstone Creek area is only accessible by plane during the summer months. During the winter months it is accessible by a winter trail and an ice bridge if any heavy machinery is to be moved in or out.

Geology & Target:

The geology target on the first half mile of Livingstone Creek was to excavate the placer gravels just above the clay layers or bedrock, and test with a sluice plant.

Tests have shown that the clay bedrock is between 5 and 20 metres thick and consists of complex of alluvia, colluvial and glacial deposits.

Sluicing Process:

The ground on Upper Livingstone is saturated with ground water. In order to get an accurate test, we used the Cat to strip a path 10 feet to 20 feet deep targeting just above the clay layer. The material to be sluiced was pushed back to the sluice plant. (See diagram I)

The sluice plant had a shaker screen on it, all the large boulders were washed and screened down to 3" minus before they entered the sluice box. For recovery, we used backed Nomad matting under the Hungarian riffles. The riffles were 1 inch angle iron. To set the right pitch on the sluice box, we used Randy Clarkson's Report - "Placer Gold Recovery Research: Final Summary." This showed us how to set riffles to create the right vortex for our gold recovery system.

Results:

All the concentrate material realized from the test pit sluicing process contained heavy iron deposits (black sand) with quarts. Yardage did not prove up as expected; \$1.00 per yard and under. (Diagram II - Test Pits)

Recommendations:

To continue up-stream in creek channel, and test valley with magnetic survey.

Environment:

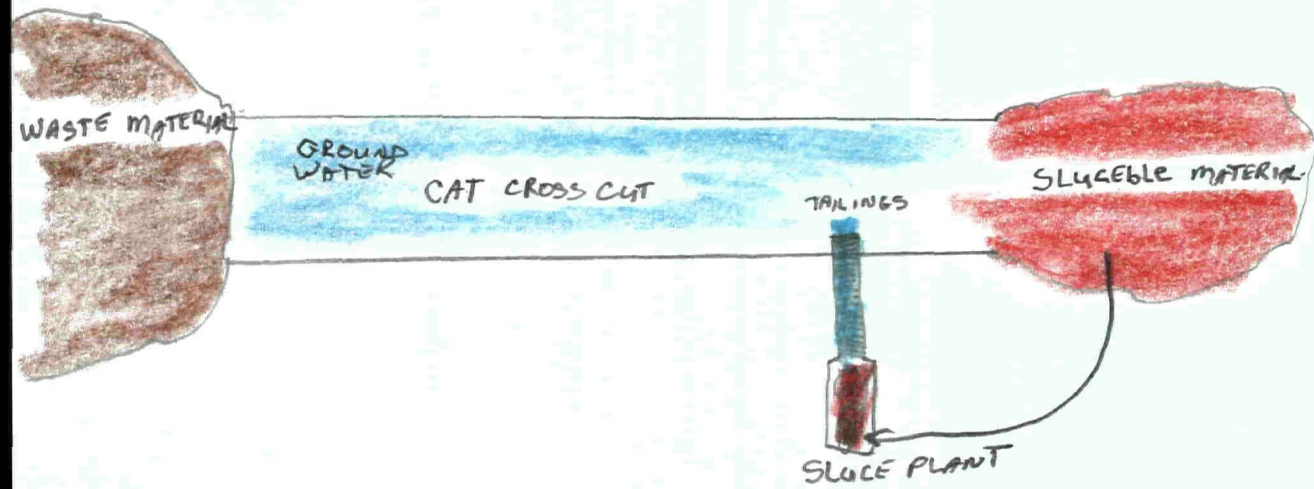
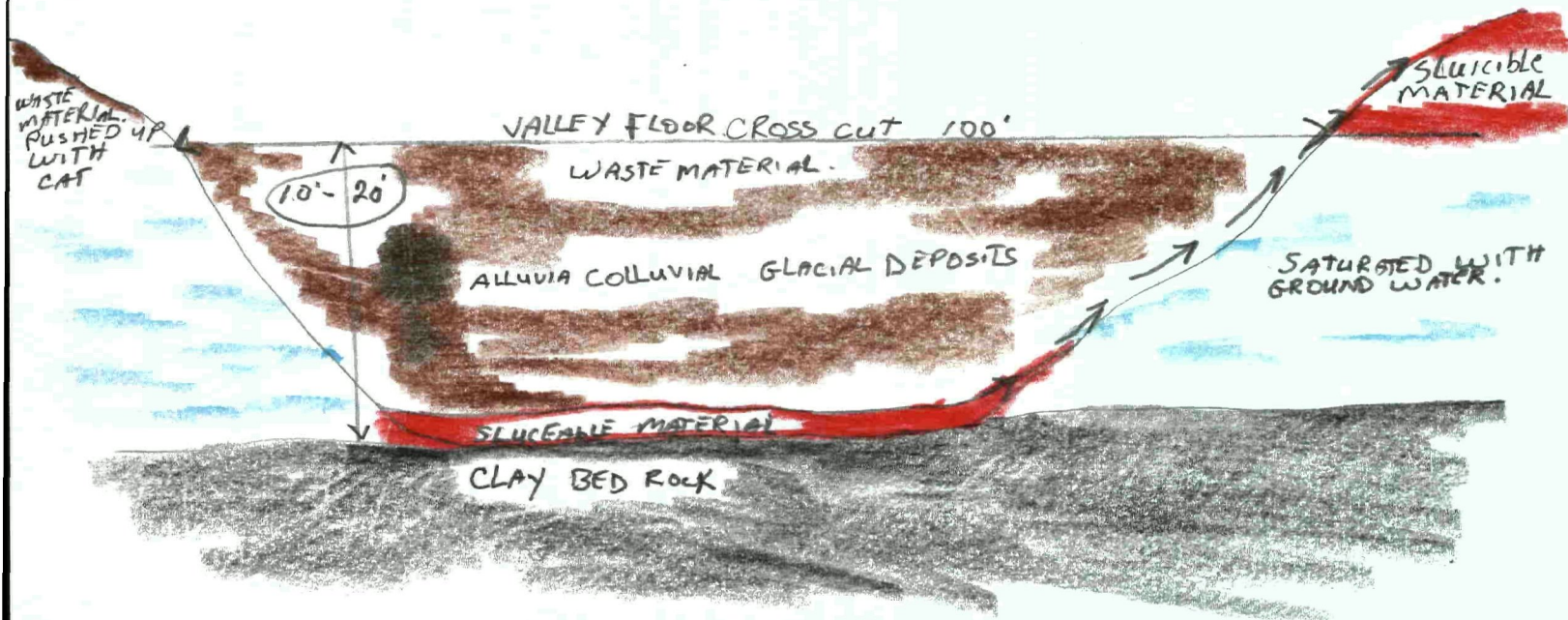
All trenches were backfilled and the area was levelled and left smooth to avoid any entrapment of wildlife.

Our thanks to the Government of Yukon for their funding assistance for our program. This assistance was two-fold:

- 1) it helped the Yukon economy as funds were spend in Yukon to provided supplies and employment, and .
- 2) the prospect of finding a profitable mining development.

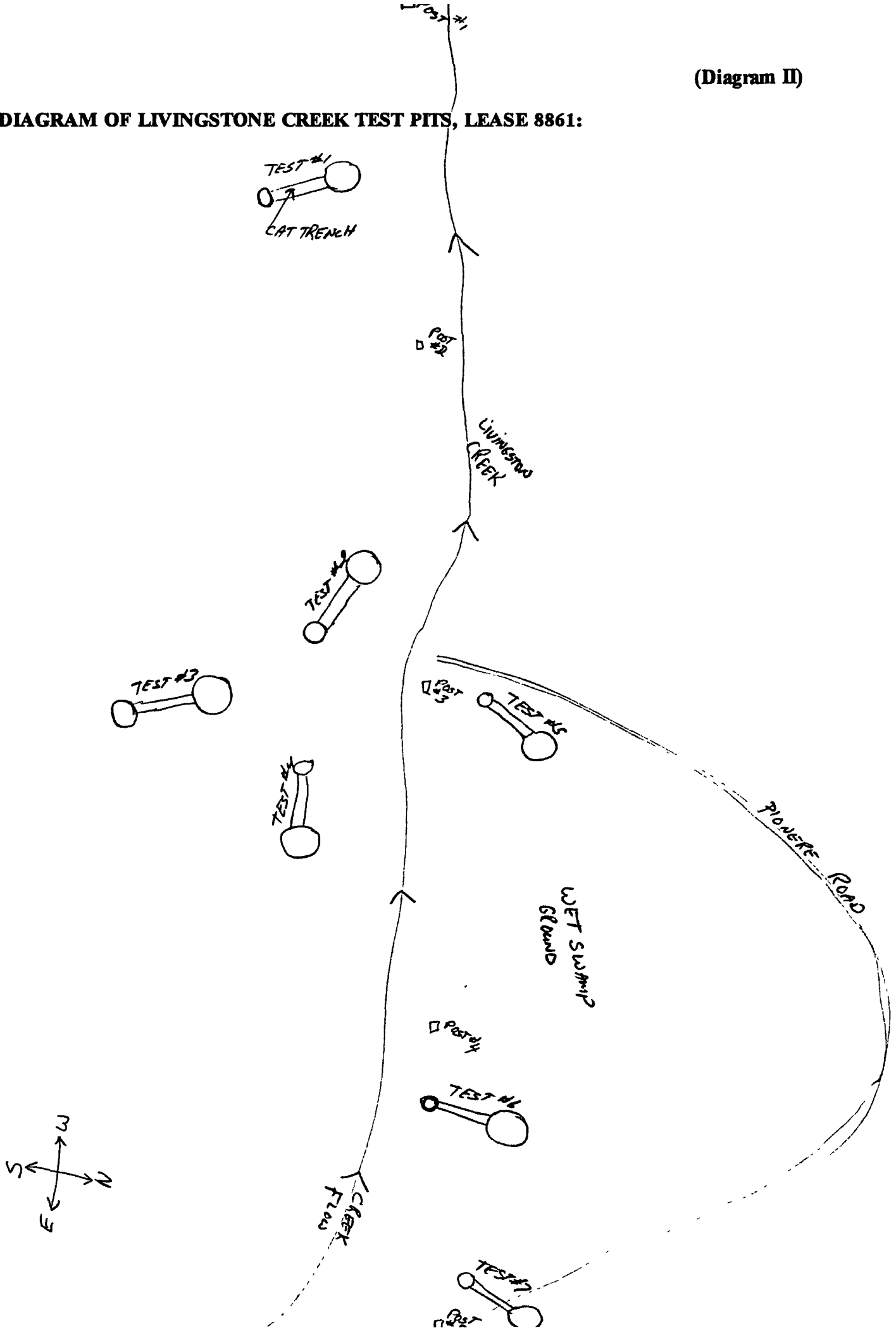
Pictures on the following pages provide visual progress of our summer test program.

(Diagram I)



(Diagram II)

DIAGRAM OF LIVINGSTONE CREEK TEST PITS, LEASE 8861:





LIVINGSTON CREEK
LEASE # 8861

SLICEABLE
MATERIAL JUST ABOVE CLAY

← CLAY SEAM



D8K
BULLDOZER



CLAY SEAM



CAMP AT
UPPER LUMBERTON
CREEK
1994



LEASE # 8861

LOOKING UP
LIVINGSTON
CREEK



TEST SITE
UPPER LIVINGSTON
CREEK

105-E-8

N
W
E
S

UPPER LIVINGSTONE CREEK :
TWO MILE PLACER LEASE 8861
LATITUDE 61° 12.5' : LONGITUDE 134° 20'

