

~~Y.M.P.~~ Journal 1994
115.G.11

Y.M.I.P. # 94-05

A. John Obermeier
Box 32,
Barwash Landing,
Yukon - YOB-1VO



(Placer prospecting
Au)

- 115-G-11 -

Access

June 4th / 94

At Milepost 1116 (approx.) the "planned" spot for crossing the Klwane river to access the proposed prospecting area was found to be extremely dangerous, because of the swift current and eddies in this area. The decision was made to cross the Lake (Klwane lake) from Burwash, due north, to reach the other side near, or at the beginning of the mouth of the river. A horse trail from a local outfitter leads along the NE side into the Tincup lake area.

Several other old Indian trails can also still be travelled, but are too grown over for use with a 4 wheel A.T.V.

Provisions and equipment were ferried over and cached and hauled into the prospecting area. This was accomplished over a two week period. Due to high winds on Klwane lake, it took sometimes several days of "sitting it out" before another crossing could safely be made.

Previous consultation: Trevor Bremner, - Geologist from the Fed's, gave me some ideas of what to look for and where.

Equipment:

1. one 2 inch "Keene Suction dredge" (portable),
2. one 2 inch Briggs & Stratton water pump with hoses.
3. One 12ft. Aluminum boat with 25hp. Johnson O.B. motor. (incl. 2 life jackets and oars).
4. One Husky 61 chainsaw.
5. One Yamaha 4 wheel A.T.V.
6. Home made alum. Sluice box (foldable).

- * #s Equipment #'s (corresponding to the above, in numerical order)
- 1.) E-414167
 - 2.) B-9214782
 - 3.) no number on boat: (12ft. Aluminum)
25hp Johnson (Sea Breeze) FT18E-C 413532
 - 4.) Husqvarna 61 - 2380456
 - 5.) 4wheeler - JY 42 HT 00 XH 000 9073
 - 6.) no ser. number

Little Creek (#1 on map)

sunny/warm

①

June 16th /94

08³⁰ hrs. setting out to prospect on "Little Creek"
drop offs numbered #1 and #2 on map.

Under brush is dense and little water flow.

Noticed wash outs from 1988 flood, washed
some gravels with Portaslucide in #1 area.

12³⁰ hrs. Moved to #2 area for testing,
no colours in both locations.

1~~7~~³⁰ hrs. Set up for camp and run more
gravel through suction dredge.

18⁰⁰ hrs. shut down for the day.

June 17th

Little Creek (#1)
Location #1 and #2

(2)

sunny, windy -

06⁰⁰ hrs. Returned to #1 location to resume testing on east and west banks. Even a 1 1/2 meter deep hole did not yield any indications of Au - no colour.

13⁰⁰ hrs. moved up to #2 location, moved some boulders, used suction dredge - no colour.

15⁰⁰ Very ~~little~~ a small amount of magnetite. Continued with small trench on east side, still no colour.

18⁰⁰ Returned to camp.

June 18th

#2 Creek

(3)

windy, light overcast

07⁰⁰ hrs. moving all equipment to new location. (2 trips on foot)

14⁰⁰ hrs. setting up on #2 Crk. - location #1.

Tired!

June 19th

2 Creek
- location #1 -

(4)

windy; warm

09⁰⁰ hrs.

Gravels bear a distinct similarity to the ones on "Little Creek," (limestone);
Some ferrous (rusty) oxide clumps.

Tested these for Au, via panning - no indications.

Removed some mediumsize boulder.

Very little water in Creekbed, at times dry, where it moved underground.

14⁰⁰

Used suction dredge to probe area where I removed boulder, sluiced approx. 6 yds.³, panned concentrate, found 2 colour.

17⁰⁰

Returned to camp.

June 20th

(5)

- # 2 Creek -
location # 1 and # 2

sunny, windy

08⁰⁰ hr. Returned to # 1 location, dug down in two areas, approx. 4' each, used suction dredge and pan - no colours.

13⁰⁰ Up on # 2 location moving some boulders.

15⁰⁰ Used suction dredge in these areas.

Note X Some of the lower (deeper) lying gravels appear to be glacial till, but no colours were found. The depth of bedrock remains undetermined and could possibly be established through seismic sounding.

17⁰⁰ washed through approx. 2 cu. yrd of gravel - no results -

19⁰⁰ Returned to camp.

June 21st

3 Creek

(6)

overcast, windy

07⁰⁰ Moved to #3 Creek - setting up.
checking via panning along the way.
No colour.

* No water flow at the 3500' level, although
there's small waterflow above and below.
The gravels in this Creek are somewhat
coarser in appearance. Some of the
boulders are of the conglomerate type,
checked out some loose ~~for~~ quartz, crushed
and panned some - no colour.

18⁰⁰ Into camp.

June 22nd

(7)

#3 Creek

light wind, warm

#3 location

06⁰⁰ moved some boulder, took samples
to be washed elsewhere. - no water.

11⁰⁰ at water - tested samples - no colours.

14⁰⁰ at confluence - terrain is steep,
checking east + west bank for colour.
digging down in area of previous small
water fall - no colour.

Can run suction dredge only 20 min. at a
time - low, slow water flow.

16⁰⁰ panning concentrate from dredge sluice -
no colour.

18⁰⁰ back to camp.

June 23rd

#3 Creek

(8)

sunny - no wind

#2 location

07⁰⁰ hr. moving equipment to location

* The similarities here confirm to #1 and #2 Creek, although this Creek ~~is~~ cuts "deeper" into the terrain.

13⁰⁰ hr. - setting up 2" pump and sluice box

14⁰⁰ moving gravels through box - the suction dredge is not suitable here - too coarse.

16⁰⁰ Testing (panning) some concentrate - no colour.

17⁰⁰ Continuing to test area in various locations with Pan - no colour.

18⁰⁰ To camp.

(9)

June 24th.

3 Creek

showers, cloudy

2 location

08⁰⁰ hr. tested ground between # 3 and # 2
location - no colours.

14⁰⁰ hr. moving equipment to # 1 location.

June 25th

(10)

3 Creek
~~B~~ location (one)

overcast, windy

09⁰⁰ hrs. setting up and moving some boulders.
noticed conglomerate formation in same.

* Again limestone and oxidized ferrous
sand and light gravels were found - tested
same - no colour. These "rusty zones"
are set up in clumps and have to be
broken down in order to wash them in a

pan.
13⁰⁰ Found ² small (2mm) size Copper nuggets in
concentrate - no colours though.

18⁰⁰ Back to camp.

June 25th

#3 Creek

light breeze, cloudy

- # 3 location - (one)

08⁰⁰ hrs. found another four small Copper nuggets,
again no colour.

12⁰⁰ hrs. checking low lying area on NW bank
with suction dredge in an old pool - slow
water flow - , gravels are well rounded, indicative
of glacial till - checked under 4" layer
of 1235 yr. old volcanic ash to confirm
glacial deposits - again no colour - no
copper.

17⁰⁰ hrs. reassembled gear and moved to
camp at 19⁰⁰ hrs.

June 26th

4 Creek (11)

sunny, windy.

06⁰⁰ moving to # 4 Creek all day.

20⁰⁰ Setting up - checked at random, during trip, several locations along the way via panning. No colours.

* noticed silicified limestone, some bithumens as well.



Note:

* Do to time consumption because of moving camp, location and equipment, the entries here are shorter than normal. All moves are on foot.

The terrain does not permit the use of A.T.V.s, to cut travel to do so would take away from the prospecting.

The distances are quite substantial.

Personal crossing during prospecting, for supplies were made via the lake to Burnash, cont. ↗

June 27th

(17)

4 Creek

strong S. wind, - clear

- #1 location -

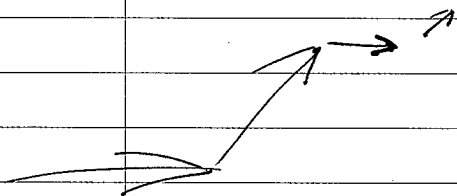
09⁰⁰ hr. moving up the Creek to #1 location.

12⁰⁰ hr. at #1 location.

13⁰⁰ hr. setting up at approx. the 4000' level in steep area.

15⁰⁰ checking several locations nearby via panning - no colours.

18⁰⁰ Back to camp.



* equipment, fuel and supplies had to be ~~made~~ ^{brought in} via the lake route. At times it was possible to cross via canoe at the original proposed crossing site 2 miles south of Uluane Village (1118), yet it was too dangerous to move supplies there other than myself.

June 28th

4 Creek

(13)

warm, windy.

#1 location

10⁰⁰

set up and ready to run some gravel through suction dredge.

14⁰⁰

tested concentrate, had moved approx. 3 yds.³ of material. - No colours. - 2 small copper nuggets.

*

noticed more granite in gravels than in the other locations and creeks.

June 29th

(14)

cloudy, showers

Going out for supplies + provisions. (H. Jct)

June 30th

day off

July 1st

day off

July 2nd

Too stormy to cross Lake today.
Winds up to 70 km/p.hr.

July 3rd

Windy — no crossing

July 4th

15

Still windy.

15⁰⁰ hrs. Crossed in the afternoon

July 5th

#4 Creek

windy, warm

22⁰⁰ hrs. - arrived at camp.

(16)

July 6th

#4 Creek

(17)

sunny; calm

#2 location.

11⁰⁰ hrs. arrived at site from camp.

set up to dredge at 4000' level in small ravine. * Again noticed granite pieces and limestone - rusty coloured gravel, some indication of small amount of copper - found four colours^{Au} in panned concentrate, had sluiced approx. 3 yds³ of material - not a good ratio!

17⁰⁰ hrs. had to shut down for repair on dredge motor. (faulty plug).

July 7th

(17)

#4 Creek

cloudy, windy

#2 location

10⁰⁰ hrs. used S. dredge to check several spots in the vicinity. - Hand washed several oxide (iron) deposits - some minute amount of copper - no more colour.

15⁰⁰ rechecked area where colours found on July 6th - hand dug a 3 1/2 ft. hole and checked the bottom gravels - no colour.

Digging is prohibitive due to large boulders in gravels. These boulders appear to have been dropped by the retreating last glacier.

Note * Apparently three different glaciation periods seem to have taken place in this region. Two of them retreated in the same direction - one at a 90° from them.

* The lake level seems to have been at a higher elevation as well in the "recent" past. Some old roots and driftwood can still be found that indicate this.

* It is very discouraging not to find any indication of glacial deposits so far, although the geology is quite different from that in the Doujek region.

July 8th

#4 Creek
#3 location

(A)

cloudy, wind

07⁰⁰

moving to #3 location,
observing the gravels and rocks
and finding a quite similar appearance
as in #2 location.

11³⁰

excavated a 4' hole and using ^{the} suction-
dredge to test contents. - No colour.
Moving around in different spots in
the same area without results.

* If any gold were in these gravels, it
would have definitely given indication by
now.

18⁰⁰ hr. in Camp. - moving to #1 location.

23⁰⁰

arrived and set up at #1.

115-G-11

July 9th

#4 Creek
#1 location

(26)

cloudy, warm

(East bank)

12⁰⁰ hr. moving some small boulders, cleaned out these areas with suction dredge.

15⁰⁰ hr. panned concentrate, - no colour.

(West bank) - checked old Creek bed - no water - removed pails of gravel to wash area - no colour.

18⁰⁰ back to camp.

July 10th

#4 Creek

(2)

cool, windy. ^{NW}

- #1 location -

08⁰⁰ hrs. checking on Eastbank under volcanic ash.
noticed bands of rusty ferrous oxide,
processed some - no colour, some minute
copper granules.

11⁰⁰
digging hole for testing, pumping water
to use suction dredge - removed approx.
one cu. yrd - no colour.

15⁰⁰ tested several locations in the vicinity -
no gratifying results.

x limestone, some granite, schist
pyrite + calcopyrites

18⁰⁰ Into camp. - packing for move to
#5 Creek.

July 11th

#5 Creek

(22)

windy, cool.

Moving supplies + equipment
all day.

* doing spot checks with gold pan along the way.

July 12th

(23)

going out for provisions + fuel (H. Jct.)

July 13th

day of - (shopping)

July 14th

windy + cool

waiting to cross lake

July 15th

Too windy to cross

July 16th

Still waiting for winds to die down.

July 17th

(24)

cool, calm

17⁰⁰

Crossing Lake

got to camp at 03⁰⁰ hrs. July 18th

July 18th

5 Creek
- #1 location -

(25)

Sunny, windy

15⁰⁰ hrs. got moved to #1 location,
setting up equipment.
Checking gravels and panning
in several areas - no colours.

East side

* This location is a "natural sluice box" as
the Creek runs well and "steps" down
like a terrace.

17⁰⁰ hrs. moved approx. 2 cu. yds of gravels
through machine, found 4 colours,

20⁰⁰ shut down

July 20th

#5 Creek
#1 location

(26)

windy, clear

Eastside

10⁰⁰ hrs. returned to same location and checked banks - again the always present "volcanic ash" layer, gravels below had not been moved and indicate glacial till deposits.

15⁰⁰ dug several holes to wash lower lying contents. 2 colours found - nothing larger.

17⁰⁰ tested concentrate from approx. 2 cu yds of washed gravels - 3 colours.
- small amount of copper in same.

18⁰⁰ shut down - off to camp.

July 21st

#5 Creek
#2 location

(27)

sunny, windy

10⁰⁰ arrived at #2 location, setting up.

12⁰⁰ panned at confluence of two pups into creek - no colours.

Moved up on NW pup and tested gravels.
No colours.

16⁰⁰ set up near test hole (3' deep) for tomorrow.

18⁰⁰ into camp.

July 22nd

(28)

5 Creek.
2 location

heavy overcast,
shower.

11³⁰

finish digging test hole and started suction dredge.

15⁰⁰

hrs. run several cu. yds of material through box - testing concentrate - 3 colours. again running into rusty oxide regions without getting any colour. Some indications of copper - very minute.

18⁰⁰

into camp.

July 23rd

(19)

#6 Creek

cloudy; showers.

15⁰⁰ hrs. completed move to #6 Creek, set up camp
and moved equipment up to #1 location.
* panning in several locations - no results
18⁰⁰ returned to camp.

* noted much more limestone than
on #5 Creek.

July 24th

(30)

6 Creek
1 location

hazy, calm

7⁰⁰ hrs. the Creek had moved in several areas, just recently (probably 1988) and 2" pump and hand sluice were used to test old Creek beds. Hase had to be run to get water to dry Creek bed.

* Found large copper nugget on creek bed surface (afloat), checked for possible source - (nil).

11⁰⁰ shoveling gravels through sluice, approx. 2 yds. - found some larger copper nuggets - and 2 colours. (Au).

15⁰⁰ foraging on east side - more copper grains - no colours.

18⁰⁰ Shut down.

July 25th

6 Creek (31)
2 location

windy, warm

08⁰⁰ hrs. panning in area for indications. (nil)
moved on # 2 pup.

11⁰⁰ hrs. started Suction dredge and moved
approx. 3 yds of gravel - no copper - no
gold indications.

15⁰⁰ started test hole to check lower areas,

* got to bedrock a 1 meter down.

Checking "bottoms" - 2 colours.

resumed suction dredging in hole.

moved 3-4 cu yds of material, checking
concentrate, some copper, (6 colours Au)

18⁰⁰ Shut down

July 26th

6 Creek (32) cloudy, cool
3 location

08⁰⁰ hrs. setting up and hauling equipment.

* area predominantly limestone, some exposed bedrock. - Moving large rocks ~~far~~ from test site.

11⁰⁰ hrs. cuts on bank reveal some layering

* consisting of silt, gravels (fill) ferrous oxide and below the humus layer, volcanic ash - 5".

15⁰⁰ sampled various layers of the above
- no colours.

near bedrock - found some colours and very light amounts of magnetite. - No colours.

18⁰⁰ Shut down - moved equipment + camp

July 27th

33

Out for provisions

H. J.

0

July 28th

day off - (shopping) wise.

July 29th

day of...

July 30th

day of

July 31st

(37)

07⁰⁰ - ~~10~~ Crossing lake -

22⁰⁰ arrived at camp. - set up. (#7 creek)

* Note - a great percentage of time is in moving through the terrain, panning "here and there" and packing equipment, camp + provisions, I abstained from "boring you to death with writing about it. Interesting and worthwhile topics are mentioned only. It ~~feels~~ seems futile at times to exert the physical effort and labour.

~~Jul~~ Aug. 1st

#7 Creek

(38)

hot, calm

#1 location

10⁰⁰ hrs. exploring pup, - panning for indications - we checked out the upper regions around the confluence (4000' level) and returned at 14⁰⁰ hrs. to haul suction dredge up. Initial panning was without success.

16⁰⁰ hrs. started dredging in confluence area. Some glacial fill on SE side, but no colour. * larger rounded off limestone rocks + boulders indicate a larger flow of water at one time, as they seem to have been moved from high lying host rock.

20⁰⁰ Shut down...

Aug 2nd

7 Creek
below # 1 location

(39)

light wind, warm

09⁰⁰ hr. rechecking via panning both sides of Creek. No interesting hardrocks here. Had four colours in pan and set up to dredge this spot.

* Note: The use of a portable suction dredge is superior to digging - especially where wet ground is concerned - hand digging only drops any possible heavier minerals lower, as with the suction nozzle they're caught. A truly great tool. Disturbance of sediments is minimal and settles out within 10 ft. downstream. Where suspended particles are high, the tailings are routed through a small tailings pond. Great care was taken not to destroy any possible Fish habitat.

Most of the Creeks flow intermittend in this region which is prohibitive to the life of fish.

18⁰⁰ hr. A couple more colours were found but the ratio indicates no feasible, further prospects.

Aug. 3rd

7. Creek

(40)

overcast, calm

2 + 3 location

10⁰⁰ hrs.

panning in both locations, (nothing notable)
Schist + limestone are again predominant
in this area.

16⁰⁰ hrs. moving in to canyon area (E)

sampling, panning, used suction dredge
to reach to bedrock - only 20cm in this
area in some places. Some very small
copper nuggets, very few colours.

18⁰⁰

moving to # 4 location

Aug. 4th

#7 Creek (41)
#4 location

light overcast, warm

10⁰⁰ dense under brush and mosses. (hard going)
* limestone, small conglomerate.

12⁰⁰ checking #4 area via goldpan, can't
get suction dredge up there - (to sleep).

Noticed rusty zones in East bank - checked out
materials, - no colour.

17⁰⁰ Shut down.

Aug. 6th

7 Creek
5 + 6 location

(42)

31°C
sunny, hot

09⁰⁰ hrs. panning and testing on the way up,
* noticed a few "conglomerates" that must
have been dropped during the glacial melt
as there's no indication of host rock in
the area, undisturbed - yet well worn.

13⁰⁰ going up pup (#5), panning from creekbed,
no colour.

* Noticed small quartz stringers in lime stone -
removed some stained rusty looking quartz,
crushed and washed some, some pyrite,
no colour.

18⁰⁰ To camp.

Aug. 7th

7 Creek

(43)

29°C
hot, calm

6 location (pup)

08⁰⁰ hrs. (sleep) studying limestone, - some silicified; some small Quartz stringers, checked various spots, crushed + washed materials - no colour.

15⁰⁰ checked main Creek bed - lots of exposed bed rock, slow water flow, panned in pool-holes - no colour.

19⁰⁰ arrived at # 7 location, setting up and shutting down.

Aug. 8th

7 Creek
7 location

44

hot, hot, hot.
no wind

09⁰⁰ hrs. passing small lake - "summit"
7 and 8 location are not actually
on # 7 Creek, but checked there any-
way. (curious!?)

14⁰⁰ No indications of any kind, mossy + swampy
no tall trees.

16⁰⁰ Returning to camp.

Aug. 9th

(45)

hot

Moving everything towards # 8 creek
all day.

* Rechecking # 7 Creek in some spots
via panning, - no results.

(46)

Aug. 10th

#8 Creek

hot, calm

#1 location

11⁰⁰

all setup at bottom of #1 location
this is also a summit area, mossy, swampy.

13⁰⁰

checking out pup, no water in higher
area, panned where possible - no colours.

16⁰⁰

Too hot to continue.

Aug. 11th

8 Creek

(47)

hot,

2 + 3 location

07⁰⁰

moving in the morning coolness to central area near bottom of # 3 location.

No colours found on main creek.

13⁰⁰

Going up # 2, pup sloughed in at times, with organic debris. - Low and no flow. - Took samples to pan elsewhere.

16⁰⁰

Checking samples in main creek - no colour. Saw surrounding higher ground again limestone.

18⁰⁰

Shut down. (too warm)

Aug. 12th

#8 Creek
#3 location

(48)

hot, calm

06⁰⁰ hr. moving up on #3, - no water, - bone dry.

11⁰⁰ hr. digging down to get sample material for panning.

15⁰⁰ hr. no colour in samples.

17⁰⁰ shutting down, extremely hot.

Aug 13th

(49)

Lat.

07⁰⁰

Going out for supplies.

22⁰⁰

crossed at Mile 1116 and hitched ride
to B. wash.

Aug. 14th

Wase. for supplies

Aug 15th

Day off.

Aug. 18th

Day of.

Aug. 17th

warm, windy

18⁰⁰

Crossing lake from S. wash

Aug. 18th

50

20⁰⁰ arrived at # 8 Creek - camp.

Aug. 19th

8 Creek

(51)

warm, windy

4 location

11⁰⁰

arrived at #4. quite a dropoff into canyon - stayed high and checked gravels - limestone, sdust.

panning in several locations - only small pools of water here and there, no colours.

15⁰⁰

retrieved some samples and washed them in maincreek - noticed a couple of copper granules. - no colours.

17⁰⁰ to camp.

Aug. 20th

#9 Creek

52

warm, calm

07⁰⁰ moving to #9 Creek all day.
sampling in various locations. no colours.

20⁰⁰ hrs. getting set up for next day.

Aug. 21st

9 Creek

(53)

warm, cloudy

11 location

10⁰⁰ hrs. - pup is dry - digging down in likely areas for samples.

17⁰⁰ hrs. returning with samples and hand-sluiced. same - washed/panned concentrate, no colour.

* This area is similar in geology as previous ones.

19⁰⁰ hrs. shut down.

Aug. 22nd

(54)

9 Creek

warm, overcast

12 location + A+B

06⁰⁰ hr. checking pups - dry

taking samples - 3 trips

11⁰⁰ moving samples to wash site

returning for further samples up
on A+B, no water.

15⁰⁰ start washing samples, found 3 colours
from pup "B".

17⁰⁰ Shut down

Aug. 23rd

9 Creek

(55)

sunny, warm.

B pup.

09⁰⁰ hr.

returned for deeper samples

11⁰⁰

washed out gravel samples. - one colour.

13⁰⁰

moving to # 1 location.

* checking main creek on both sides,
no indication of copper or gold.

limestone, some small coniferiferous, schists.

18⁰⁰

to camp.

Aug. 24th (56) #9 Creek
#1 location

warm, windy

08⁰⁰ Finally some water in pup, (small flow)
panned in several locations, both banks
at the 4000' and 4500' levels - no colour.

13⁰⁰ hrs. - moved to higher location, various
other pups feeding into this one, all dry
but one, sampled dry and washed
later, some copper granules - no colour.
The area is very steep and strewn with
wind eroded materials - nothing noteworthy.

15⁰⁰ hrs. checked out small quartz samples -
again no colour.

18⁰⁰ Shut down.

Aug. 25th

#9 Creek

(57)

sunny, windy.

08⁰⁰ moving to #2 location

13⁰⁰ hrs. set up and going up #2. No water!
Taking several samples to be washed later.

17⁰⁰ washing samples, minute amount of copper - no gold indications.

19⁰⁰ returned and set up near #3.

* the absence of water in pups makes it difficult to prospect.

Aug. 27th (58) #9 Creek
- #3 location -

hazy; warm.

07⁰⁰ hrs. no water again.

moving up to get samples.

(* Fresh bear sign - returned to camp to
bring up gun.)

11⁰⁰ getting samples.

15⁰⁰ washing out samples - no mineral content.

* again, the geology is similar throughout
the area - nothing worth while to mention

17⁰⁰ Shut down.

* Out at 04⁰⁰ hrs. Aug. 28th

Aug. 28th

day off
trip to H. Jt. - supplies.

Aug. 29th

Day off - getting provisions

Aug. 30th

Day off

Aug. 31st

08⁰⁰ Crossing lake from B. wash

23⁰⁰ Arrived at # 9 Creek.

Sept. 1st

9 Creek (59)

cool; windy

11⁰⁰ hrs. moving gear to # 6 area - setting up, took various samples via pan on the way - no colours.

limestone, some silicified, rusty gravels on bank cut.

15⁰⁰ Checked out ferrous oxide samples, no colour.

18⁰⁰ Shut down.

Sept. 2nd

9 Creek
7 location

(60)

sunny, windy

07⁰⁰ hrs. ~~Get~~ Pup dry, going up for samples

11⁰⁰ hrs. returning with samples for washing
- nothing noteworthy - no colours.

13⁰⁰ getting another set of samples -
same results - nil.

16⁰⁰ to camp.

Sept. 3rd

Creek # 9
#8

(61)

sunny, windy

11⁰⁰ reached # 8 location, Main creek
flowing sparsely, again limestone formations,
some small conglomerates.

14⁰⁰ # 8 pup dry - climbing for samples.

16⁰⁰ very small indications of copper,
checked out some ferrous oxide - no colour.

x noticed some lighter coloured limestone -
layers (?). no colour. (Au)

19⁰⁰ returned to camp.

Sept. 4th

Creek #9

(62)

overcast, cool

#. 9. location

07⁰⁰ hrs.: started up dry pipe, it appeared that there has been no water flow in this area for some time, due to overgrowth - even the main creek disappears underground and sample washing was done in small pools. nothing of any significance to note.

* some trace of copper - no colour.

16⁰⁰ returning to camp and getting more samples near main creek - again no colour.

19⁰⁰ shut down for the day.

Sept. 5th

Creek # 9

(63)

cool - windy.

10 location

10⁰⁰ hrs. quite steep in canyon area, limestone, some muddy layers, took samples and panned some, small amount of copper - no colour.

13⁰⁰ Dug several holes 2 to 3 ft. deep, got 2 to 3 colours per pan, - *not enough water to run suction dredge*

repeated sample runs and panned material, dug a bit deeper in test holes - again only 2-3 colours per pan.

18⁰⁰ back to camp. -

Sept. 6th

Creek # 9

(64)

windy, cool

0700 hr. moving equipment and supplies back into vicinity of # 11 + 12 location all day — tested ground in previously missed spots, had marked some with ribbon for return trip — *no noteworthy results in these areas either.

Sept. 7th

on #9 Creek (return) cool, cloudy.

07⁰⁰ moving all day - into #8 Creek area -
alpine meadows - near both small lakes,
* took several samples and panned same,
no results.

19⁰⁰ Setting up camp near #2 location #7 Creek
again sampled along the way - no colour.

Sept. 8th

(66)

sunny - cool

1300 hr. near confluence of # 7 and # 5 Creek
did some digging + sampling in this
area - nothing to report.

Very discouraging!

Sept. 9th

(mouth of #7)

cool, cloudy.

got across the river (Kluane) by
noon - going out for supplies.

Sept. 10th

gone out - day off
(H. Jd.)

Sept. 11th

day off

Sept. 12th

day of

Sept. 15th

day of

Sept. 14th

day off

Sept. 15th

day of

Sept. 16th

gone to see Nurse at D. bay

Sept. 17th

(67)

returned to mouth of
7 Creek

cool, windy

13⁰⁰ hrs. moving over to # 6 Creek - ~~in~~ up stream
towards proposed land claims area - there is
quite a good sized mountain there with
plenty of wind erosion and ~~of~~ bare rock face,
22⁰⁰ set up camp in area.
04⁰⁰ being awakened by falling debris.

Sept. 18th

land claims area. (68) cool, sunny.

08⁰⁰ hrs. obtained from moving motorized equipment into this area as the purpose of this trip is to check out.

various locations of rocky terrain for mineral content. No water anywhere, some small trickles here and there coming from the rock surface and fissures.

* hard rock is not my strongest area as I have limited experience in it, although anything noteworthy will be recorded or checked out with geologists and/or samples.

Should take prospectors course

Sept. 19th

land claims area

(9)

windy, cool.

07⁰⁰ * noticed some skarns which have formed on lime stone contact, usually fissured & with rusty zones, also found pyrite + calcopyrite in these areas.

removed several samples for testing and lab checkout.

17⁰⁰ back to camp.

Sept. 20th

hard claims area

70

sunny, cool.

0900 Returned to area and found some more skarns.

* previous day samples washed earlier - no mineral indications.

crushed some quartz found in small stringers for later washing - testing.

1700

Shut down.

Sept. 21st

hard claims area

(71)

cool, calm

09⁰⁰

processed yesterday's samples - no minerals,
other than some ferrous oxide.

11⁰⁰

discovered some smaller straws and
removed material for washing. no colours.

Sept. 22nd

near #6 Creek. (72) cool, windy

09⁰⁰ washing out samples - trace of copper
no colour.

16⁰⁰ packing up gear to move out in morning.

Summary

Nov. 2nd / 94

Re: Placerprospects, Au

Poor indication of mineral contents encountered during this prospecting venture leads me to believe that mining in this area is not feasible.

In the higher lying areas a thorough checking out of the ground was not possible, due to the lack of water, although samples were collected and taken out for Lab. analysis, the results are pending until the samples are processed. (in progress at this time). This area ~~is~~ was one of the toughest areas I have ever worked in, due to the long distances involved and the dense terrain,

The area directly east of the prospected area (approx. 8 to 10 km), ~~the~~ ^{the} Gladstone area for example is fairly rich in placer deposits. It's therefore very puzzling that there were no noteworthy indications in the area I prospected.

There is just nothing to be put on paper. I'm very regretful that this was such a poor report.

A. John Obermeier

Even if you did not have good results, information is still important.

Work is done & documented in diary,
map & SUMMARY REPORT



WHITEHORSE 18 March 1988

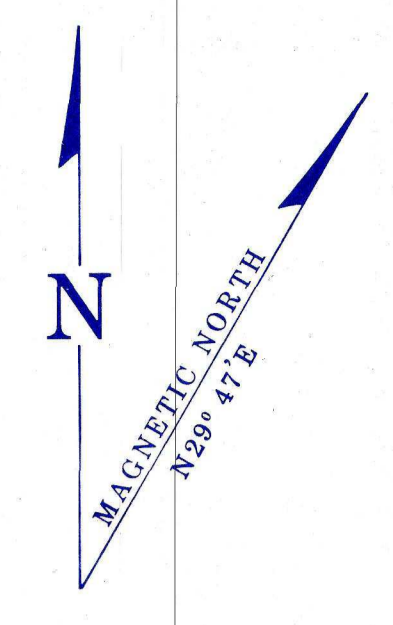
12 NOV 91
 13 NOV 92
 14 OCT 92
 05 OCT 92
 21 AUG 92
 01 AUG 92
 17 JULY 91
 16 OCT 91
 26 AUG 91
 20 AUG 91
 09 MAY 91
 12 SEPT 88
 23 APRIL 88
 31 OCT 88
 04 OCT 88
 20 JULY 88
 16 SEPT 88
 26 AUG 88
 07 JULY 88
 24 JUN 88
 12 MAY 88

115G-11
QUARTZ & PLACER

LATITUDE 61° 30' TO 61° 45'
 LONGITUDE 139° 00' TO 139° 30'

ISSUED UNDER THE AUTHORITY OF THE MINISTER
 OF INDIAN AFFAIRS AND NORTHERN DEVELOPMENT

SCALE 1:30,000

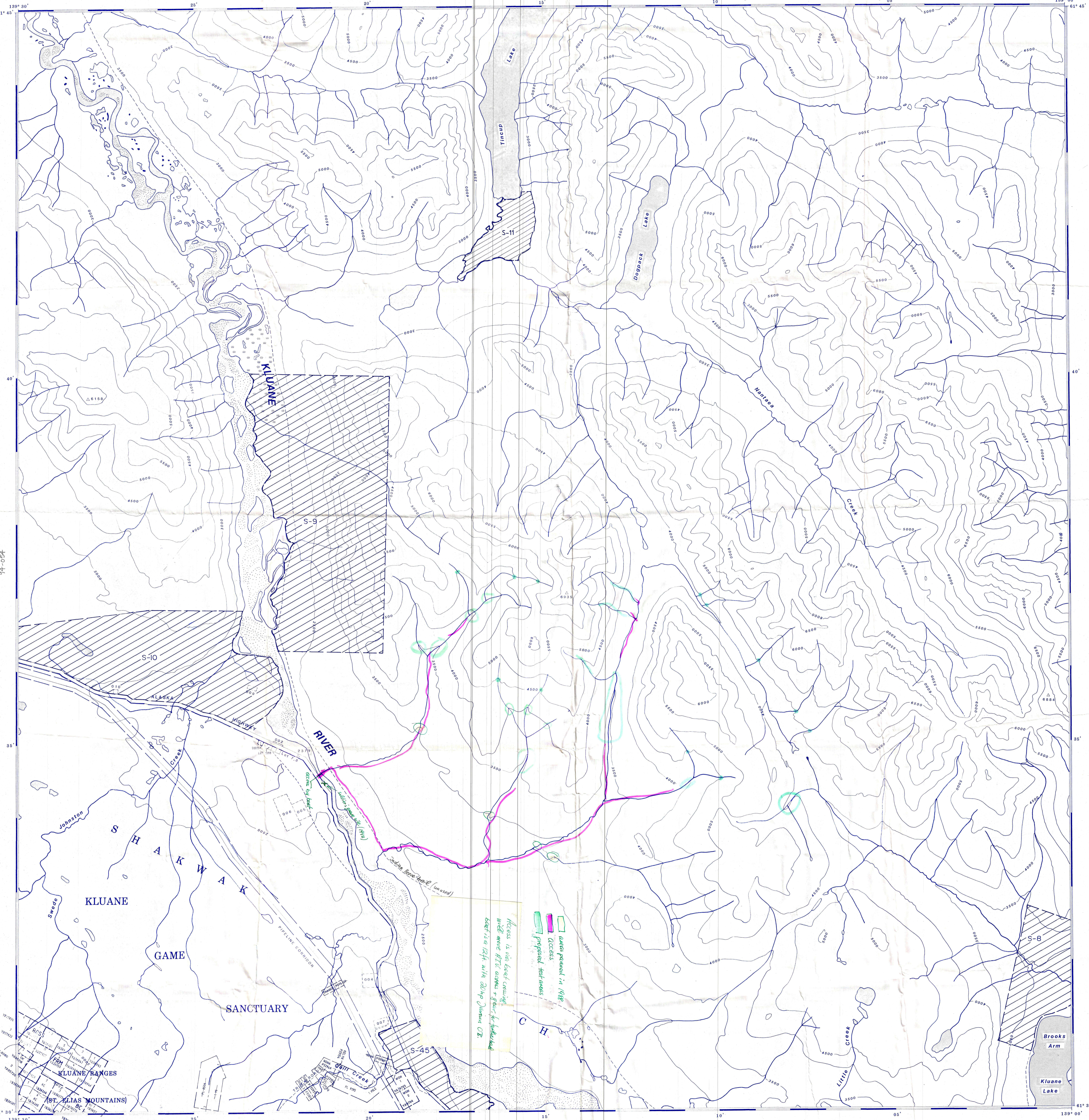


NOTE:
 THIS MAP IS ISSUED AS A PRELIMINARY GUIDE FOR WHICH THE DEPARTMENT OF INDIAN AFFAIRS AND NORTHERN DEVELOPMENT WILL ACCEPT NO RESPONSIBILITY FOR ANY ERRORS, INACCURACIES OR OMISSIONS WHATSOEVER.

TOPOGRAPHY COMPILED FROM 1:50,000 NATIONAL TOPOGRAPHIC SERIES. CONTOUR INTERVAL 500 FEET. SURVEY INFORMATION COMPILED FROM LEGAL SURVEYS, BY DRAFTING SERVICES.

Note: Entry on certain lands is withdrawn from staking in cross-hatched areas to facilitate the settlement of Native Land Claims without prejudice to Existing Surface and Subsurface Rights.

115G-13	115G-14	115G-15
115G-12	115G-11	115G-10
115G-5	115G-6	115G-7



*Access is via boat crossing
 well worn ft. 60. access + fees, for hydroelectric
 boat is a 12 ft. with 20 hp Outboard O/E.*

*Water-powered in 1988
 Access
 proposed test areas*