

105-K-2 - Grew Cr. prospect

Property is accessed via Roberts Campbell highway 40km east of Faro on the south side of the highway. It is a placer, hardrock gold deposit. Placer gold has been found in the lower reaches of the creek by hand miners & the upper reaches stand to have gold in them. Disseminated sulfides are seen at the upper end of this creek. I plan to hand slice in the canyon & rock chip sample some of the hardrock. A period of 2 wks. will be spent on this.

115-I-6 - Stoddart Cr. placer prospect

Property is accessed via Mount Friesgold road at km. 52 on the Granite mountain turnoff to the right. It is a placer gold prospect + Hardrock prospect. Placer gold should be here as it drains a large low grade hardrock deposit, also old working can be found which show actual hand mining took place. I plan to shaft to bedrock and drift along the gravel bedrock contact. The samples will be hand panned and if sufficient quantities are found the rest will be sliced.

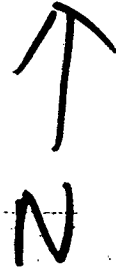
A period of 4 wks. will be spent on this. The hardrock at the upper forks of Stoddart has banded sulfides and blue silicious zones in it & is on open ground.

PELLEY

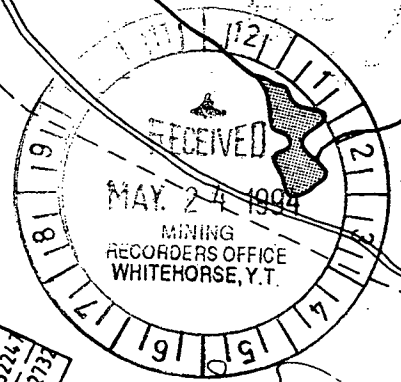
3000

Post Locations

<input checked="" type="checkbox"/>	NO CONCERNS <i>known at</i>
<input type="checkbox"/>	CONCERNS: <i>coordinates</i>
DATE: <i>26/5/94</i>	<i>A/ Supervisor of Lands</i>



$132^{\circ}53'$
 $62^{\circ}03'$



1	P 32228
2	P 32229
3	P 32241
4	P 32242
5	P 32243
6	P 32244
7	P 32245
8	P 32246
9	P 32247
10	P 32248
11	P 32249
12	P 32250

ROBERT
 2500

S-11

ENT GOLD

HAND CUTS

00005

25670
25671
25672
25673
25674

25649
25650
25651
25652

HERZ
P25648

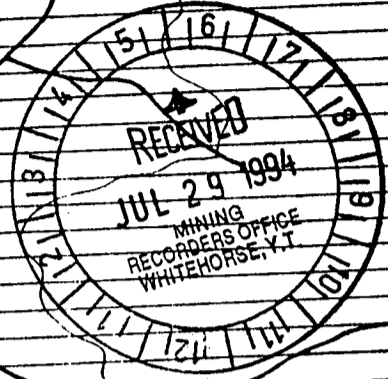
Grewk Post #2

105K-2P
Grewk

Handrock
 Grabs Samples
 @ Post 2
 Placer
 Hand Sluicing
 Panning

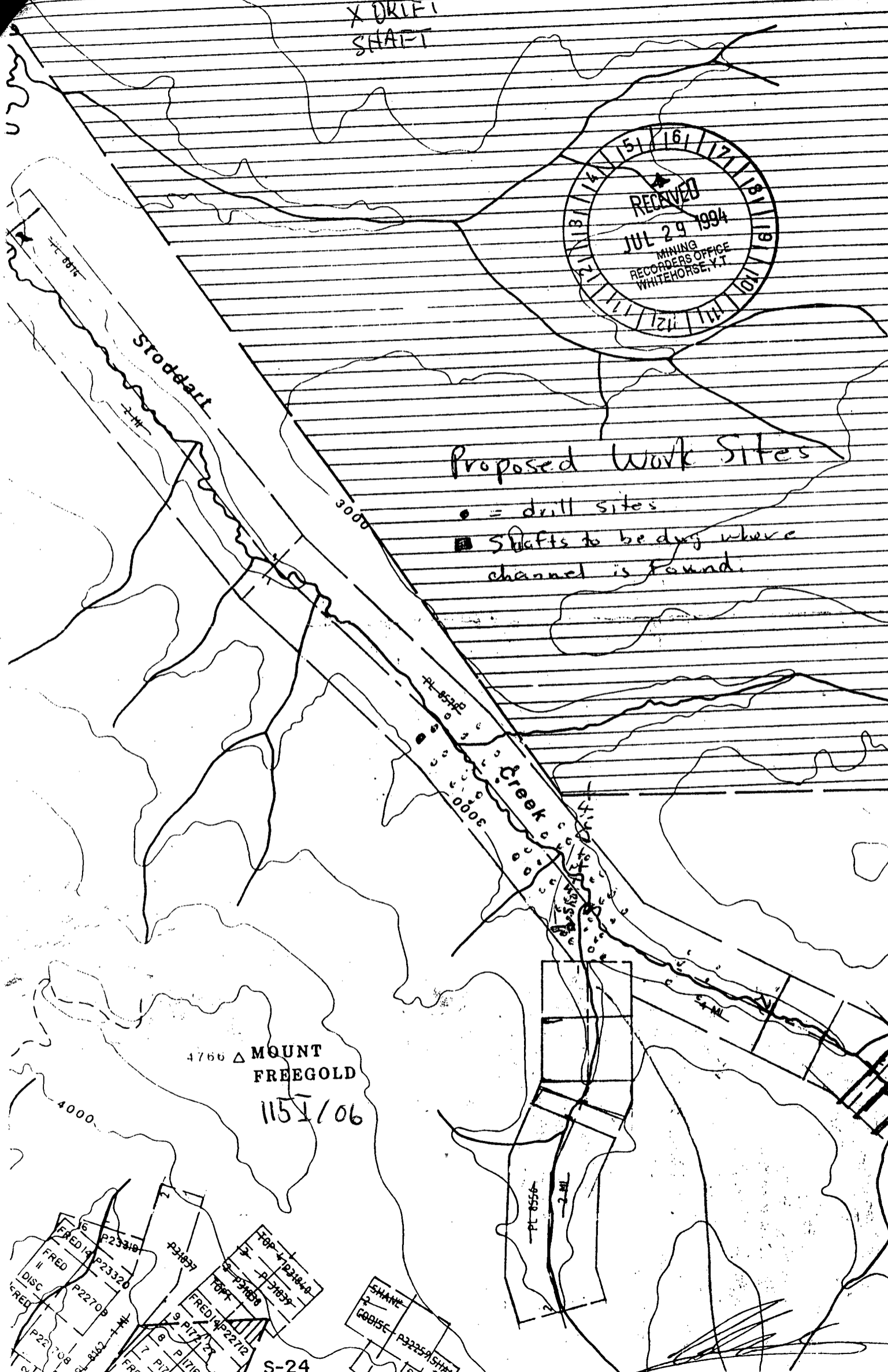
WORK PLAN
X DRIFT
SHAFT

R-9



Proposed Work Sites

- = drill sites
- Shafts to be dug where channel is found.



REPORT ON PRELIMINARY PROSPECTING

OF

GREW CR. 105-K-2

STODDART CR. 115-I-6

MONTANA CR. 115-O-11

PERFORMED by

Tom Morgan

between the dates of

May 10 1994 to Dec 24 1994

TABLE OF CONTENTS

ACCESS - GREW CR. STODDART CR. MONTANA CR. + TRISS.

GREW CR. CLAIM MAP 105-K-2

GREW CR. TRAVERSES + SAMPLE MAP

GREW CR. CANYON + TRENCH START PICTURES

GREW CR. FINISHED TRENCH PICTURES

STODDART CR. - Quartz map SHOWING ACCESS ROAD 115-I-6

STODDART CR. - Placer map SHOWING OLD BENCH CHANNEL

STODDART CR. - TRAVERSES + SAMPLE MAP

SAMPLE DESCRIPTION TABLE

ASSAY CERTIFICATES

STOWE CR. + MIDDLE MONTANA CR. MAP SHOWING CLAIMS + UPPER STOWE CR. SHAFT

UPPER MONTANA CR. SHOWING CLAIMS + SHAFT LOCATION 115-O-11

PICTURES SHOWING UPPER STOWE CR. + UPPER MONTANA CR. SHAFT SITES

UPPER STOWE CR. SHAFT CROSS SECTION

UPPER MONTANA CR. SHAFT CROSS SECTION

CONCLUSIONS

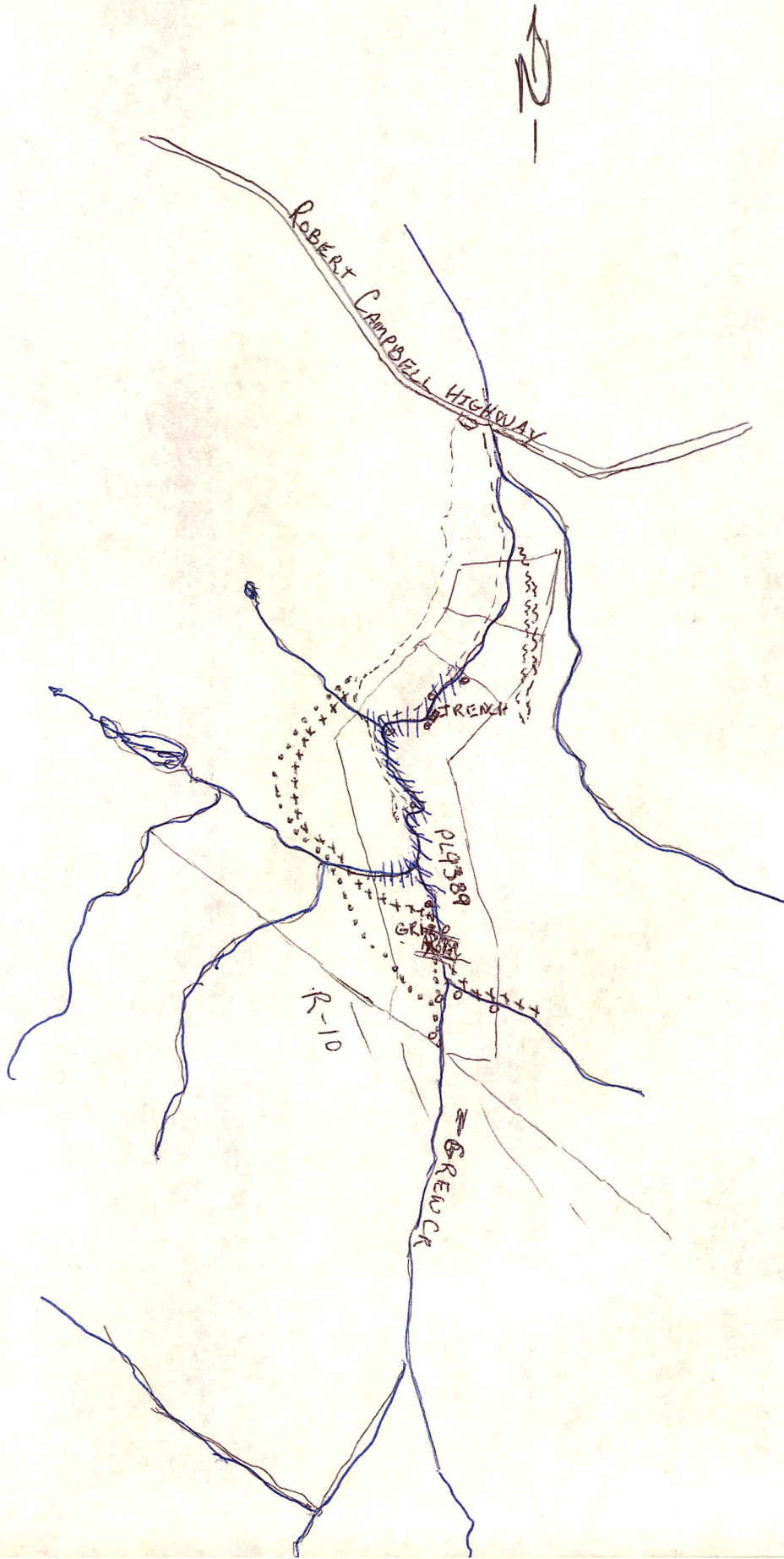
ACCESSES

GREW CR. - Turn right on Faro road travelling north through Carmacks. Follow this road till you're around 40 miles past Faro where you'll hit Grew Cr., ½ mile before the Grew Cr. culvert a drill road goes south and follows the left limit of Grew Cr. to about mid canyon where it continues West. The creek must be followed by foot from here.

Stoddart Cr. - Turn left on the Mount Freegold road travelling north through Carmacks. Follow this road 39 miles to the Laforma Mine turn off to the north. Continue up to the top of Mount Freegold and continue east 3 miles through the Antonic zone and down along the right limit of Schist Cr. through the DART claims. The road ends at the junction of Stoddart Cr. & Schist Crs.

MONTANA CR. - Proceed out of Dawson to the Bonanza Cr. turn off. 2 miles out on the south side. Take this road and continue up ~~to~~ its head going up the Eldorado road. Continue over the Calder summit and down Calder / Quartz to the north of Quartz Cr. at the Indian River. Turn left at the old bucket line dredge and follow the trail up the Indian River 8 miles to the mouth of Montana Cr. Continue up this trail 5.5 miles to Stone Cr. trail going to the West 3 miles to the shaft. Continue from here ~~up~~ 8 miles up Montana Cr. to the Upper Montana Cr. shaft.

GREW CR. TRAVERSES 105-K-2



May 11 - - - - -
May 12
May 13 staking PL9389
May 14 ~~~~~

SEPT. 10+11 Trench
SEPT 12 XXXX

DISSEMINATED SULFIDE ZONE

X GRITZ SAMPLE SITE

TRENCH SITE

STREAM CHANNEL

HHH CANYONED SECTION OF CREEK

O PAW SAMPLES

GREW CR. 105-K-2

W



FIRST BED $\frac{1}{2}$ mile (at hand trench)
from canyon start looking upstream



HAND TRENCH START between canyon wall
and large boulder that shovel is leaning against

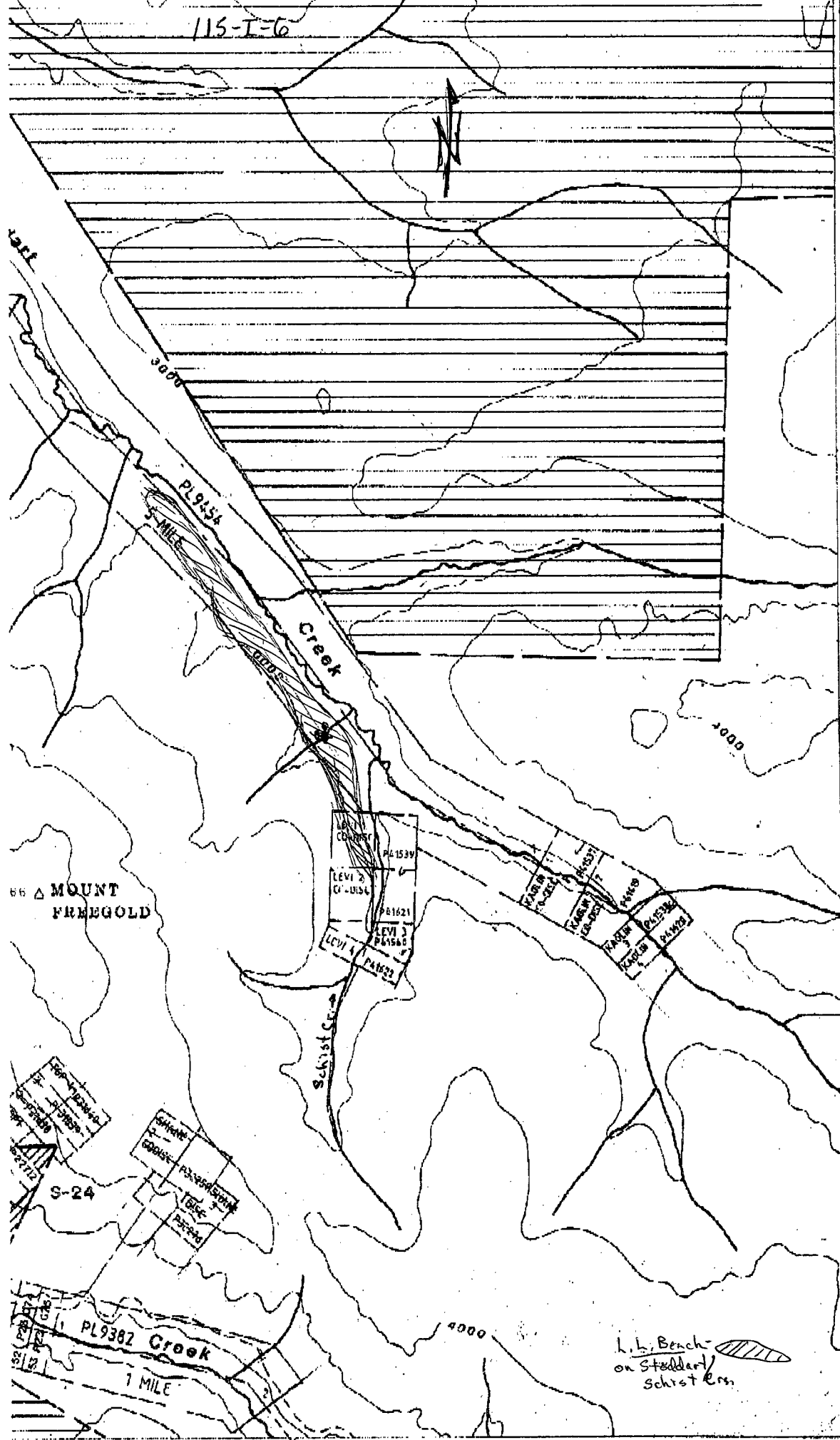
GREW CR. 105-K-2



HAND Trench extending back into bank and under boulder
It was also 2' below the water level with no solid bedrock

115-T-6

20'



66 Δ MOUNT FREEGOLD

PL9134

Creek

Schist

LEVI 1 PL1539
 LEVI 2 PL1621
 LEVI 3 PL1545
 LEVI 4 PL1622

MAGN PL1623
 MAGN PL1624
 MAGN PL1625
 MAGN PL1626

S-24
 PL9382
 PL9383
 PL9384
 PL9385
 PL9386
 PL9387
 PL9388
 PL9389
 PL9390

SHANE
 GODISE
 PL9381
 TISE
 PEECH

PL9382
 1 MILE
 Creek

L. L. Bench
on Steadert
Schist Cr.

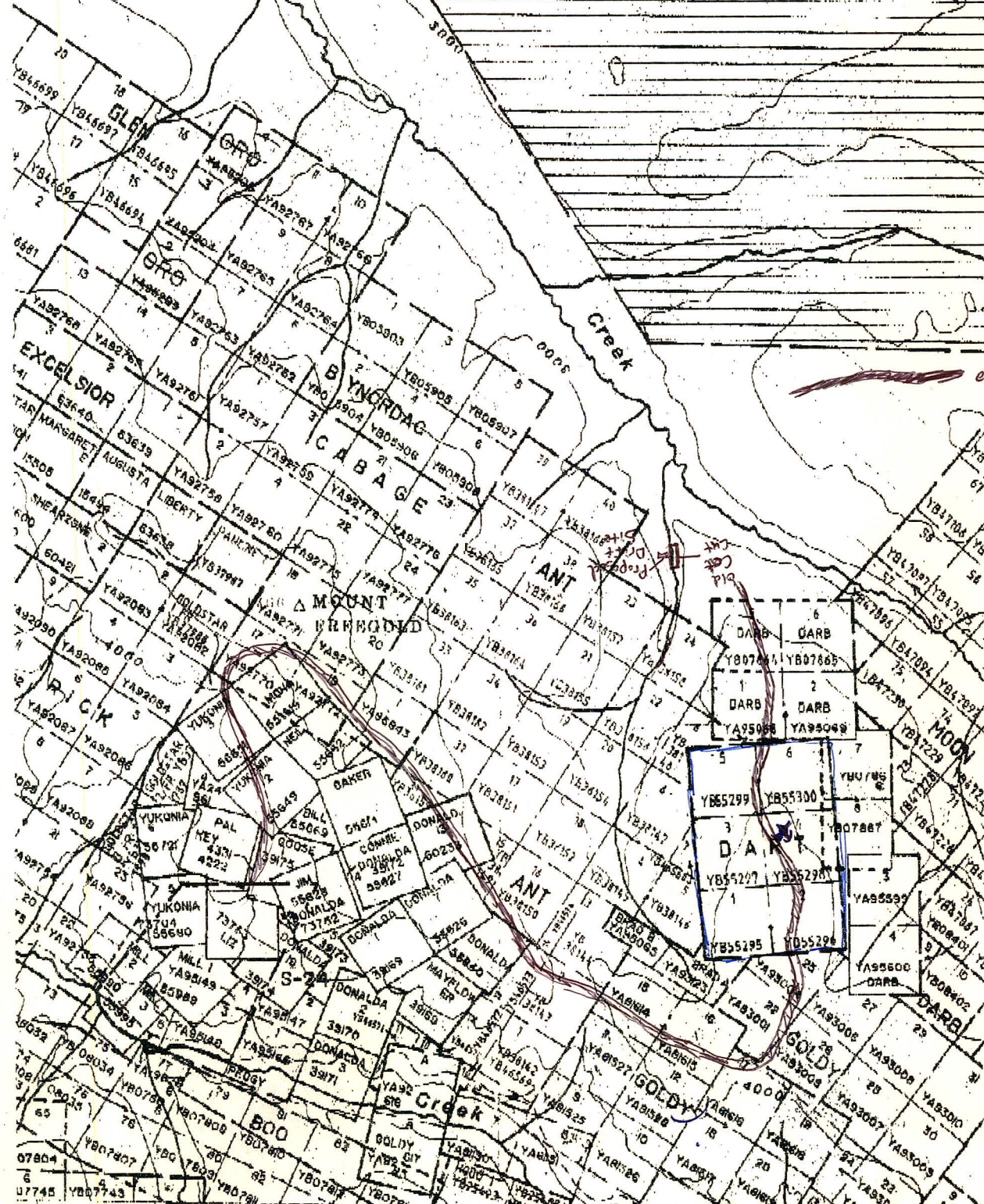
115-T6

Part of farms
staked Nov 29/94

Stoddart

Creek

access road



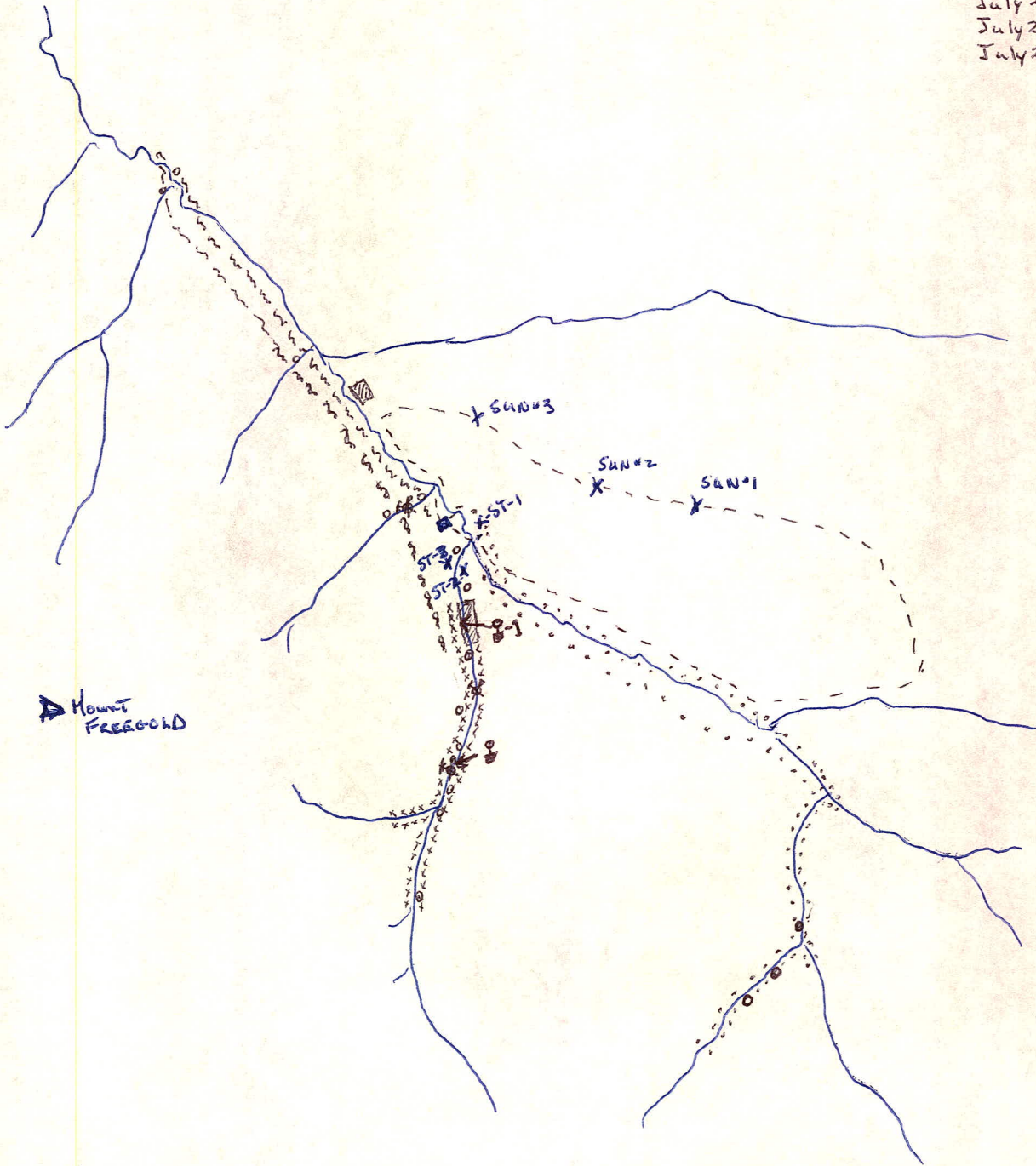
STODDART CR. 115-I-6 TRAVERSES + SAMPLING



- ① START OF DRIFT SITE
- ← Hand Trenching spots
- X sample sites
- Cabin
- hand panning areas
- ▨ Cat Cut/Trench
- ⊗ old hand workings

Traverses

- July 20 -----
- July 21 oooooo
- July 22 xxxxxx
- July 27 ~~~~~~



▲ Mount FREGGOLD

SAMPLE TABLE

SAMPLE NAME	LOCATION	DESCRIPTION
SUN #1	<u>115-I-6</u> 62° 17.75' Lat. 137° 04' Long	DEEP RED/BROWN RHYOLITE w WELL DEVELOPED PORPHORITIC CLASTS + PYRITES
SUN #2	<u>115-I-6</u> 62° 17 ³ / ₄ ' Lat. 137° 03 ¹ / ₂ ' Long	LIGHT BROWN FINE GRAINED RHYOLITE w SOME RUST ZONES + THE ODD PYRITE
SUN #3	<u>115-I-6</u> 62° 17 ³ / ₄ ' Lat. 137° 03' Long.	LIGHT BEIGE (OFF WHITE) w LIGHT BROWN STAIN IN PLACES + THE ODD PYRITE
ST # 1	<u>115-I-6</u> 62° 17 ¹ / ₄ ' Lat 137° 04' Long	ALTERED GRANITIC w UGGY QUARTZ + DISSEMINATED TO BANDED SULFIDES STAINING/WEATHERING YELLOW TO GREEN/YELLOW
ST #2	<u>115-I-6</u> 62° 17 ¹ / ₄ ' Lat 137° 04' Long	ALTERED GRANITIC w OPAQUE BLUE SILICIOUS LENSES/VEINING w DISSEMINATED TO MASSIVE SULFIDES
ST #3	<u>115-I-6</u> 62° 17 ¹ / ₂ ' Lat 137° 03 ¹ / ₂ ' Long	ALTERED GRANITIC w BANDED SULFIDES ALMOST SCHISTOSIS IN ITS BANDING + SEPARATIONS
GR #1	<u>105-K-2</u> 12,000' UP GREY CR. (ON LEFT LIMIT) FROM HIGHWAY	MARBLE w DISSEMINATED SULFIDES WEATHERING YELLOW/BROWN
GR #2	<u>105-K-2</u> 12,000' UP GREY CR. FROM HIGHWAY (ROBERT CAMPBELL) ON LEFT LIMIT	MARBLE w DISSEMINATED SULFIDES WEATHERING RED/BROWN

07/94

Assay Certificate

Page 1

Tom Morgan

WO#25266

Sample #	Au ppb	Ag ppm	Cu ppm	Pb ppm	Zn ppm	As ppm	Sb ppm
SUN#1	<5	0.2	51	6	59	15	<2
SUN#2	<5	<0.1	6	14	13	14	<2
SUN#3	<5	<0.1	9	17	9	<10	<2
GR1	23	<0.1	12	29	364	13	2
GR2	<5	<0.1	18	15	22	<10	<2

Certified by




09/21/94

Assay Certificate

Page 1

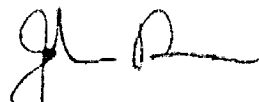
Tom Morgan

WO#25397

Sample #	Au ppb	Ag ppm	Cu ppm	Pb ppm	Zn ppm	As ppm	Sb ppm
ST 1	5	<0.1	17	27	50	16	<1
ST 2	5	<0.1	14	15	51	19	1
ST 3	7	<0.1	37	13	74	18	<1
ST 4	17	<0.1	26	4	29	10	<1

ST4 - Quartz breccia off map sheet coming up between green stones + schists

Certified by



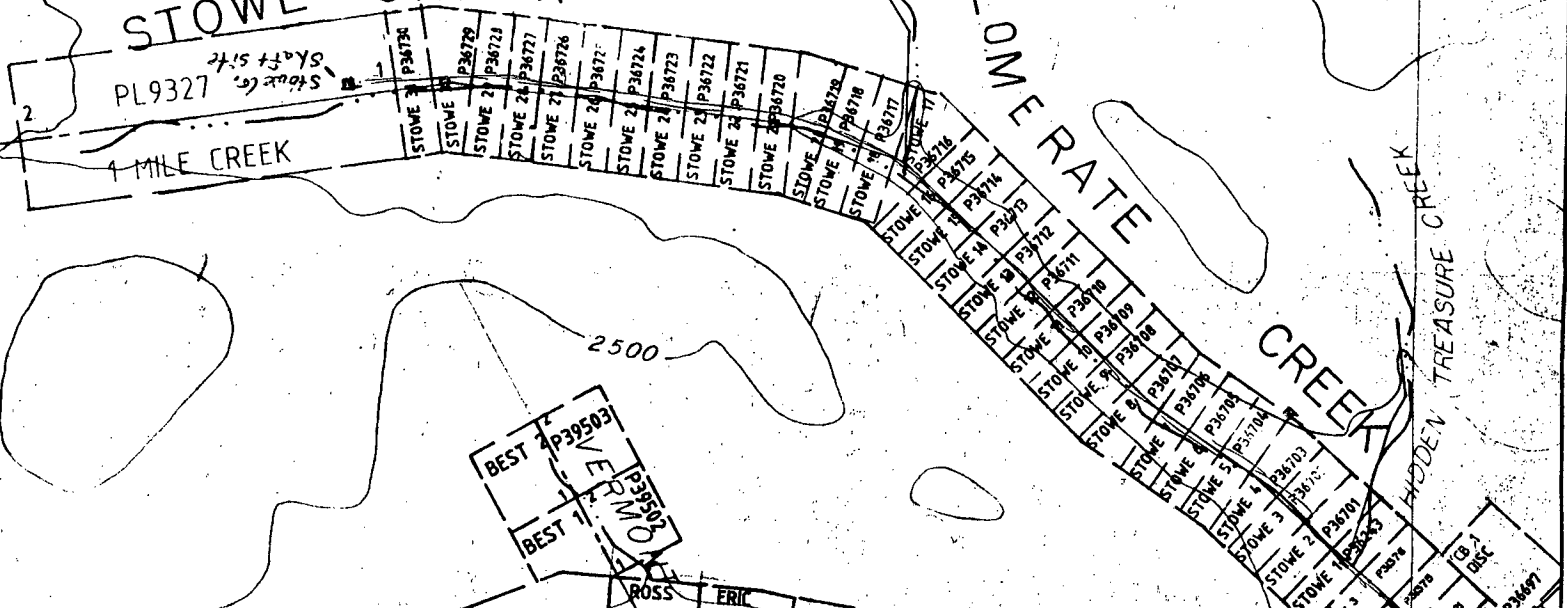
STOWE CR. + MIDDLE MONTANA CR. 115-0-11

AIN

STOWE CREEK

CONGLOMERATE CREEK

PL9327
4.54 Acres
Staff 5.4



BEST
P39503
P39502
P39501

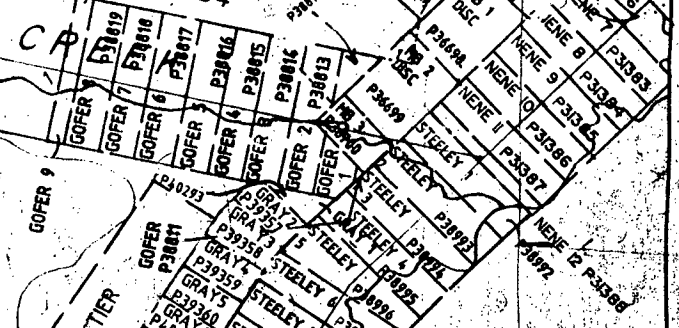
ROSS ERIC
P39501 P39500

1st TIER

PL9354

PL9337
BISMARCK

3 MILE
5 MILE



GOFER 9

GOFER 8

GOFER 7

GOFER 6

GOFER 5

GOFER 4

GOFER 3

GOFER 2

GOFER 1

GOFER 0

GOFER -1

GOFER -2

GOFER -3

GOFER -4

GOFER -5

GOFER -6

GOFER -7

GOFER -8

GOFER -9

GOFER -10

GOFER -11

GOFER -12

GOFER -13

GOFER -14

GOFER -15

GOFER -16

GOFER -17

GOFER -18

GOFER -19

GOFER -20

GOFER -21

GOFER -22

GOFER -23

GOFER -24

GOFER -25

GOFER -26

GOFER -27

GOFER -28

GOFER -29

GOFER -30

GOFER -31

GOFER -32

GOFER -33

GOFER -34

GOFER -35

GOFER -36

GOFER -37

GOFER -38

GOFER -39

GOFER -40

GOFER -41

GOFER -42

GOFER -43

GOFER -44

GOFER -45

GOFER -46

GOFER -47

GOFER -48

GOFER -49

GOFER -50

GOFER -51

GOFER -52

GOFER -53

GOFER -54

GOFER -55

GOFER -56

GOFER -57

GOFER -58

GOFER -59

GOFER -60

GOFER -61

GOFER -62

GOFER -63

GOFER -64

GOFER -65

GOFER -66

GOFER -67

GOFER -68

GOFER -69

GOFER -70

GOFER -71

GOFER -72

GOFER -73

GOFER -74

GOFER -75

GOFER -76

GOFER -77

GOFER -78

GOFER -79

GOFER -80

GOFER -81

GOFER -82

GOFER -83

GOFER -84

GOFER -85

GOFER -86

GOFER -87

GOFER -88

GOFER -89

GOFER -90

GOFER -91

GOFER -92

GOFER -93

GOFER -94

GOFER -95

GOFER -96

GOFER -97

GOFER -98

GOFER -99

GOFER -100

GOFER -101

GOFER -102

GOFER -103

GOFER -104

GOFER -105

GOFER -106

GOFER -107

GOFER -108

GOFER -109

GOFER -110

GOFER -111

GOFER -112

GOFER -113

GOFER -114

GOFER -115

GOFER -116

GOFER -117

GOFER -118

GOFER -119

GOFER -120

GOFER -121

GOFER -122

GOFER -123

GOFER -124

GOFER -125

GOFER -126

GOFER -127

GOFER -128

GOFER -129

GOFER -130

GOFER -131

GOFER -132

GOFER -133

GOFER -134

GOFER -135

GOFER -136

GOFER -137

GOFER -138

GOFER -139

GOFER -140

GOFER -141

GOFER -142

GOFER -143

GOFER -144

GOFER -145

GOFER -146

GOFER -147

GOFER -148

GOFER -149

GOFER -150

GOFER -151

GOFER -152

GOFER -153

GOFER -154

GOFER -155

GOFER -156

GOFER -157

GOFER -158

GOFER -159

GOFER -160

GOFER -161

GOFER -162

GOFER -163

GOFER -164

GOFER -165

GOFER -166

GOFER -167

GOFER -168

GOFER -169

GOFER -170

GOFER -171

GOFER -172

GOFER -173

GOFER -174

GOFER -175

GOFER -176

GOFER -177

GOFER -178

GOFER -179

GOFER -180

GOFER -181

GOFER -182

GOFER -183

GOFER -184

GOFER -185

GOFER -186

GOFER -187

GOFER -188

GOFER -189

GOFER -190

GOFER -191

GOFER -192

GOFER -193

GOFER -194

GOFER -195

GOFER -196

GOFER -197

GOFER -198

GOFER -199

GOFER -200

GOFER -201

GOFER -202

GOFER -203

GOFER -204

GOFER -205

GOFER -206

GOFER -207

GOFER -208

GOFER -209

GOFER -210

GOFER -211

GOFER -212

GOFER -213

GOFER -214

GOFER -215

GOFER -216

GOFER -217

GOFER -218

GOFER -219

GOFER -220

GOFER -221

GOFER -222

GOFER -223

GOFER -224

GOFER -225

GOFER -226

GOFER -227

GOFER -228

GOFER -229

GOFER -230

GOFER -231

GOFER -232

GOFER -233

GOFER -234

GOFER -235

GOFER -236

GOFER -237

GOFER -238

GOFER -239

GOFER -240

GOFER -241

GOFER -242

GOFER -243

GOFER -244

GOFER -245

GOFER -246

GOFER -247

GOFER -248

GOFER -249

GOFER -250

GOFER -251

GOFER -252

GOFER -253

GOFER -254

GOFER -255

GOFER -256

GOFER -257

GOFER -258

GOFER -259

GOFER -260

GOFER -261

GOFER -262

GOFER -263

GOFER -264

GOFER -265

GOFER -266

GOFER -267

GOFER -268

GOFER -269

GOFER -270

GOFER -271

GOFER -272

GO

15	
16	
17	
18	
19	
20	
21	
22	
23	
24	
25	
26	
27	
28	
29	
30	
31	
32	
33	
34	
35	
36	
37	
38	
39	
40	
41	
42	
43	
44	
45	
46	
47	
48	
49	
50	

3000

3500

Start Site

Old Cabin

NAD 2	2
P39493	
NAD 1	2
P39492	

INE 2	2
P39495	
INE 1	2
P39498	

MONTANA CR.

3 MILE

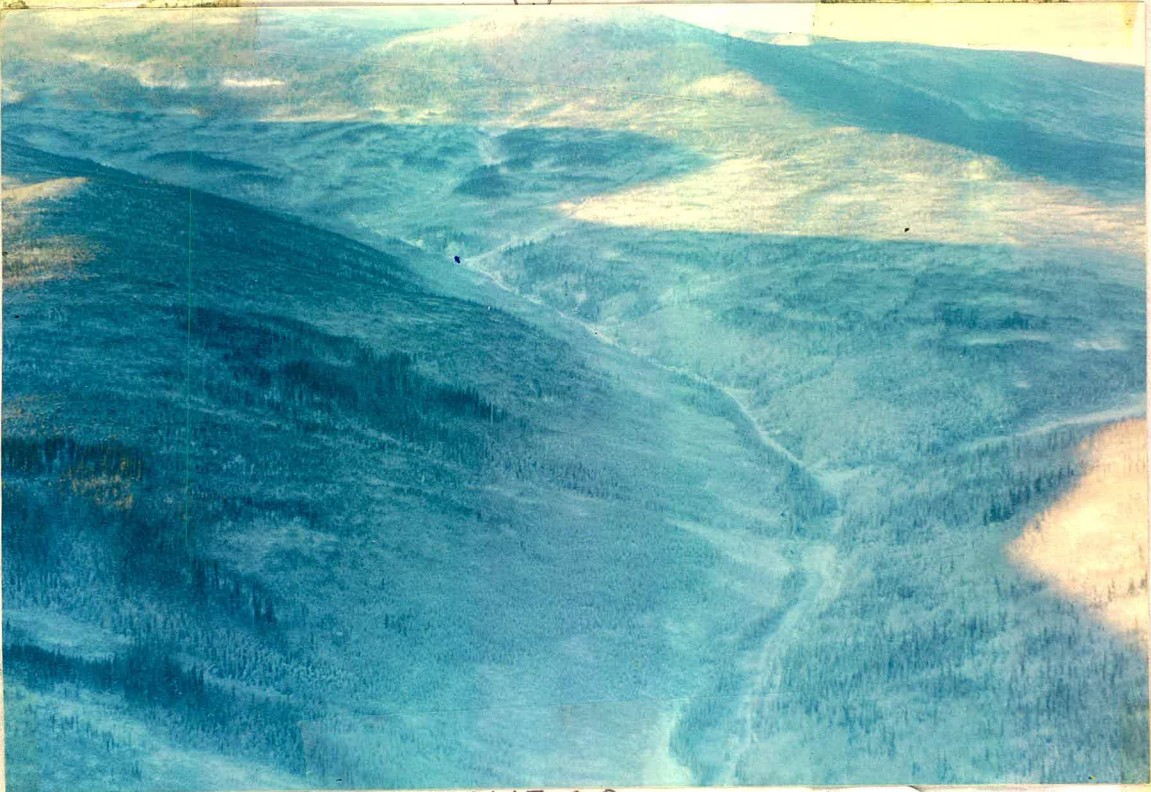
PL 9143

CALIFORNIA

Trail shaft

COFFIN

115-0-11 MONTANA CR. + TRIBS.



UPPER STOWE CR. looking West

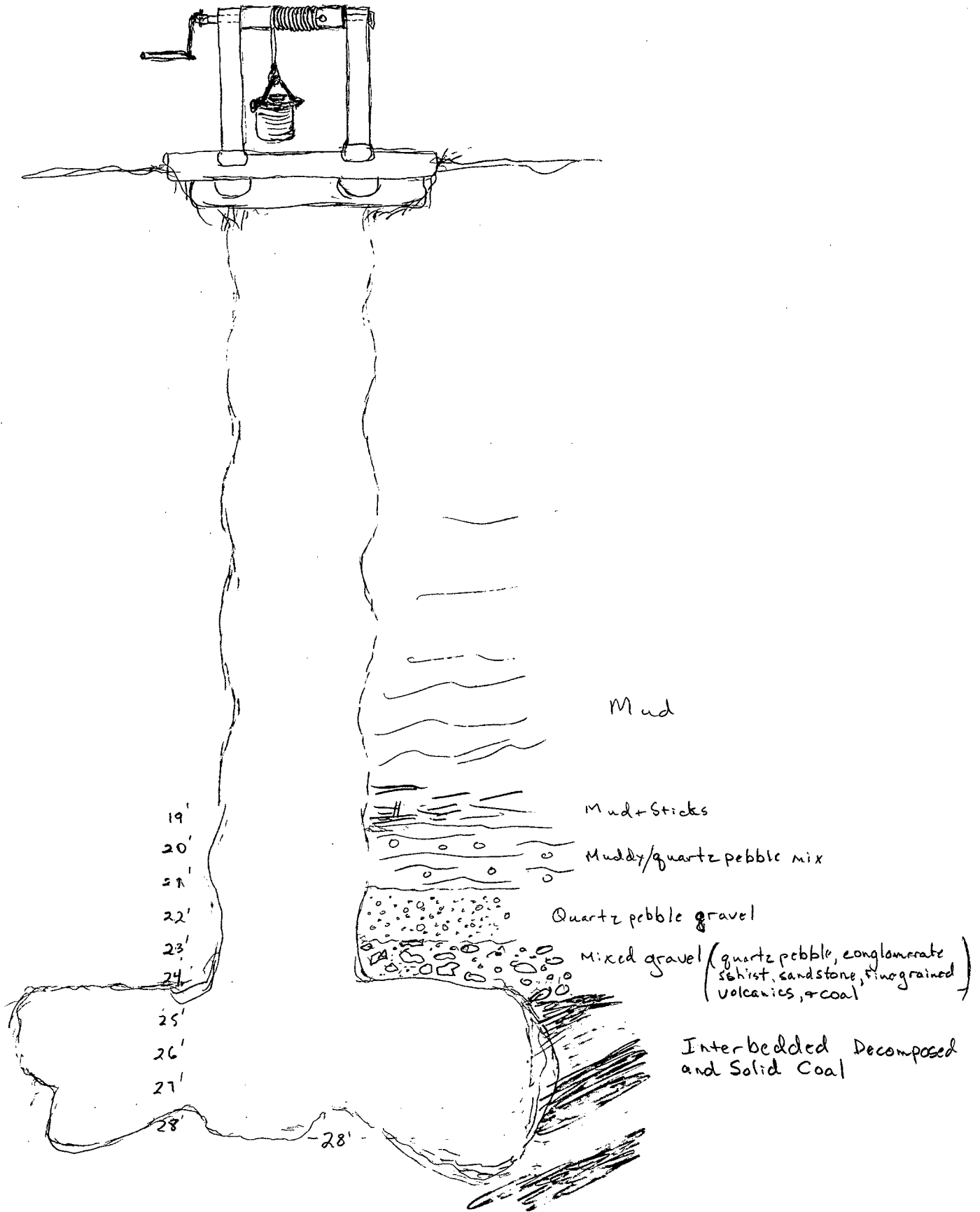
HAYSTACK MTN. NW



UPPER MONTANA CR.
looking North West

(•) showing shaft + sites on Upper Stowe Cr. (above) + Upper Montana Cr. (below)

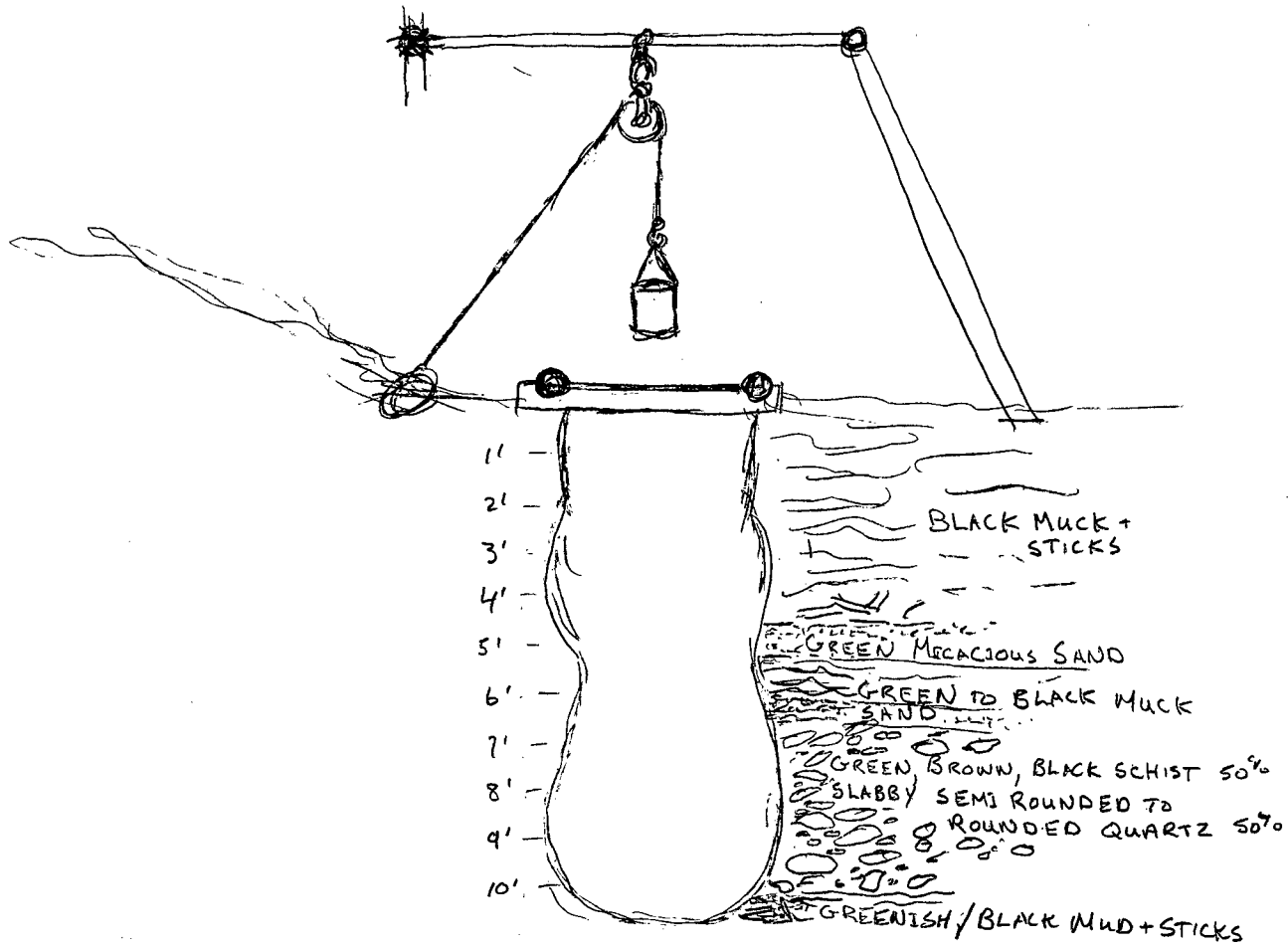
STOWE CR. SHAFT CROSS SECTION
139° 05.5' Long 63° 39' Lat.



UPPER MONTANA CR. SHAFT CROSS SECTION

139° 10' Long 63° 32.5' Lat.

MS OF DEC. 24/94



CONCLUSIONS

My conclusion of Law Cr. is this. The bedrock concentration of a placer con. will probably not exist in the soft crumbly bedrock of the canyon. Some of the bedrocks of the ground above the canyon may hold something yet. The hardrock samples showed anomalous values which should be checked further also.

The Stoddart Cr. prospect warrants a high priority. The anomalous values in the hard rock being cut across the favorable schist bedrock are an ideal model for creating a rich placer channel. This project will be commencing this winter to determine volume values of sections of the Left Limit Schist/Stoddart Cr. bench. The cross cutting of the gravel/bedrock contact of this left limit side must be done to determine whether a mineable deposit exists.

The Stone Cr. shaft showed favorable material being cut (quartz pebble conglomerate), yet the bedrock of this is unsuitable for collection of concentrates, being coal. This bedrock of coal may be economic in itself and warrants further investigation.

The Montana Cr. shaft must be finished to determine the viability of this gravel deposit. The gravel ~~has~~ so far seen and valley configuration show the best possibility of turning into an economic deposit that have seen in the Montana Cr. drainage to date.



Government of Canada

RULED EXERCISE BOOK

for ink writing

92 pages

P.P.S. Cat. No. 3255

NAME Tom Morgan's Diary Prospecting May 10 - Dec 24
ADDRESS YMP 94-069 1994
SCHOOL _____

①

May 10 Got the last bit of gear together and headed out to Drew Cr. Camped in a clearing just off the road $\frac{1}{4}$ mile before the Drew Cr. crossing, and arrived after dark.

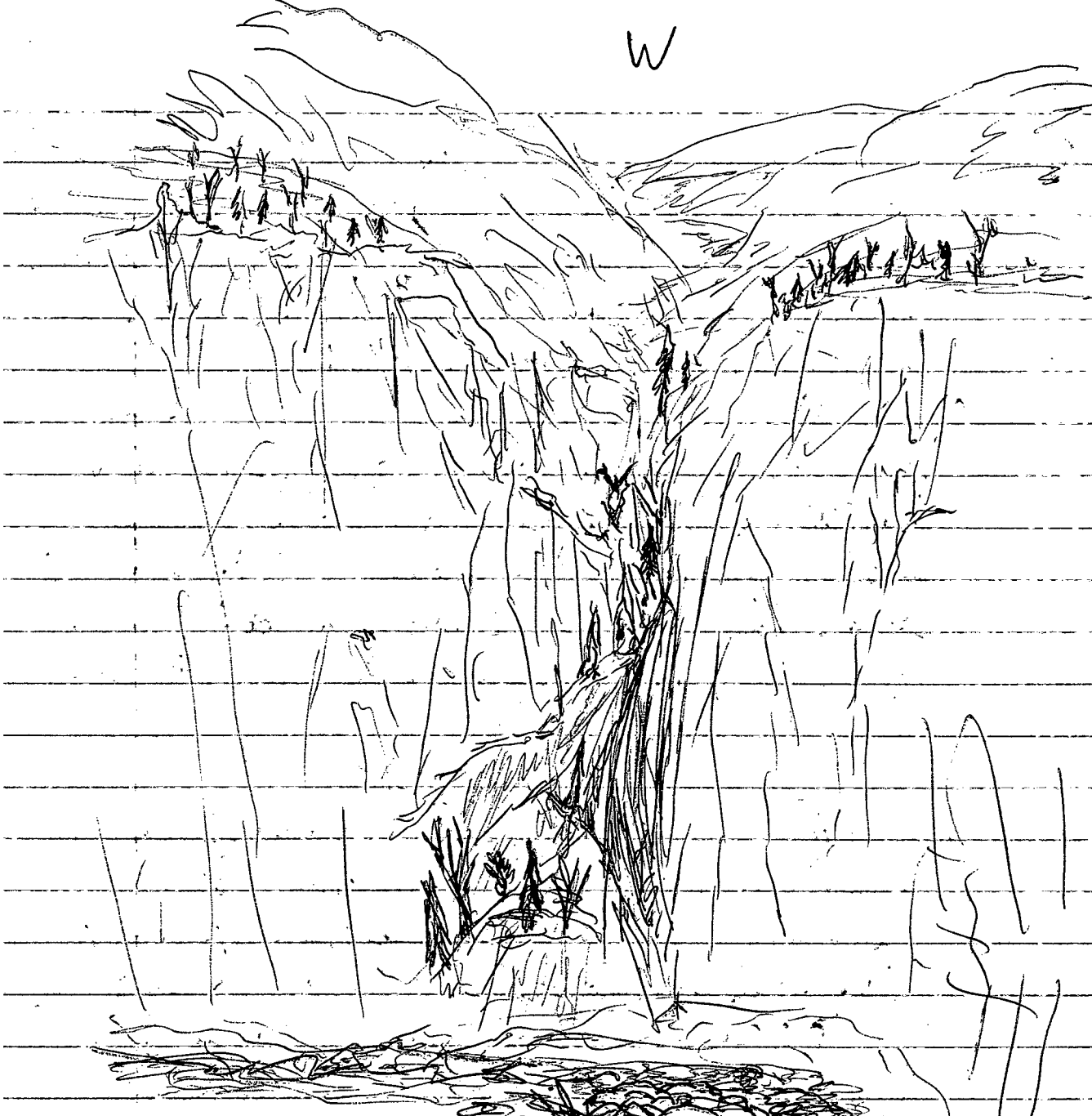
②

May 11 Hiked up along the creek in the valley bottom from the highway through the bottom claims where hand mining had & was being done intermittently by the look of things. There was some hand boxes, pans, screens, picks, shovels & other gear at the mouth of the canyon and two other gravel bars down from it. The claims ended at the start of the canyon. It appeared that the material being processed wasn't bedrock pay, as no bedrock could be seen in any of the places being worked. The pay must have been coming out of the re-concentration of glacial till. The main gravels of the valley were a mix of assorted gravels of schist, slate, granite, ultramafic. There were a fair number of heavy clastic

Olivine + hematite/limonite type
rock in the strata of gravel.

In the canyon there was big
boulders of slate from local origin
of the canyon. Panned in and around
these rocks and found flyschite in
most of the pans, along with 2 flakes of Au
in one pan just below the
first real narrows of the canyon,
(around 15' ~~across~~). A series of
alternating flares + narrows continued
up the entire length of this mile long
canyon. Half way up two landslides
had created ponds in the 500' vertical
walls of the gorge. A number of small
water falls near the head of the
canyon created an impass. Half
way down ^{the} noticed a gorge coming
in on the left limit. Enough
spruce, willow, poplar grew up along
the cliffs + ~~steep~~ moss slopes of it
to climb out of that one maze like path up
one shoot of it. Above that the gorge widened
into a gentle to moderately sloped valley

W



Right angle turn in
Brewer's canyon where 1st
left hand gorge offers a
difficult access into the
middle canyon.

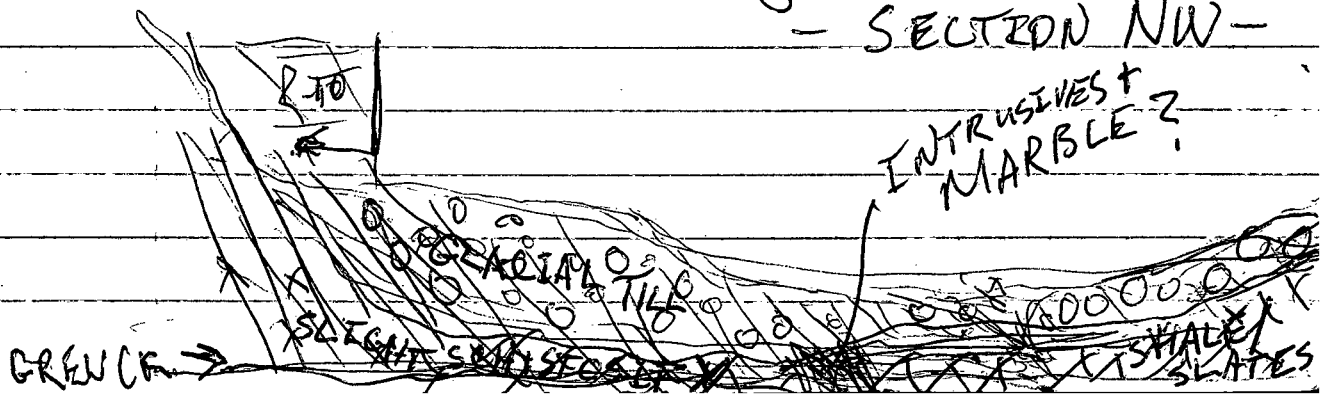
running east-west. This cut a large layer of silt rich glacial till that lay between the rock outcrops that extended out of the upper reaches of the valley walls lying to the North and South.

Found a road on the south side of the valley going down along the left limit of Brew Co. high above the valley which went back to an old drill camp site. There was a tripod and drill core. From here I went back to the highway & truck.

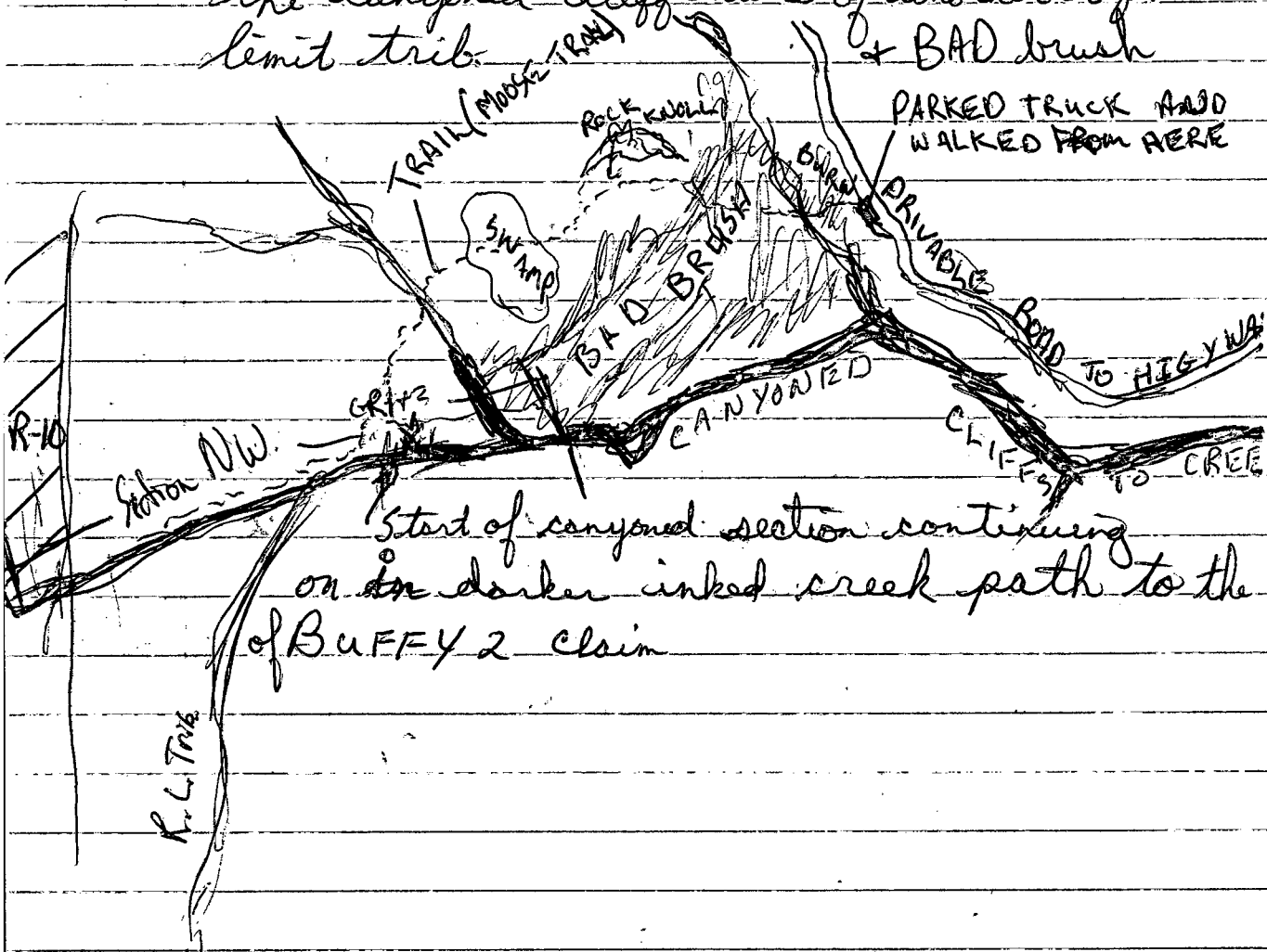
③ May 12 - Headed up to where the creek goes. Said the road goes W. I walked around the upper part of the canyon to where Brew Co. becomes a steep walled wooded (medium to large spruce) valley. The creek flats are 300' to 400' wide up to the edge of an R-10 land claim where the creek flows out of the St. Cyr Range of the Pelley Mountains. The bedrock was a bit schistose and more resistant to weathering from the three different spots checked.

poking thru. I dug on the two that
 had a layer of gravel overlaying them.
 Found a little black sand and garnet but
 no color. The bedrock is still a bit crumbly.
 Followed the creek back down to the head
 of the canyon where a body of calcareous
 rock is intruded by a fine grained
 black volcanic. The white, to red-brown
 yellow brown stained rock has disseminated
 sulfide halos extending out from the
 black ~~intrusive~~ intrusive. Took a
 couple samples, one of the yellow brown
 stained disseminated sulfide carrying ^{rock}
 (GR #1) and one of the red brown stained
 disseminated sulfide "marble" (GR #2)
 GR #1 was taken from 0 to 2m South
 of black volcanic intrusive + GR #2
 was from 2m to 3.5m South of the
 same intrusive body.

- SECTION NW -

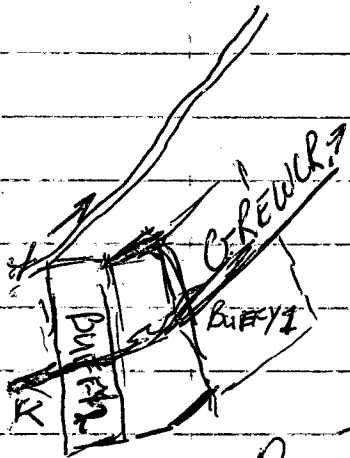


I noticed some old axe cut stumps at these narrows, where canyoning of the creek begins. From here the creek went into waterfall ~~and~~ shutes & boulders to the pt. I'd made it to below, yesterday 500m or so downstream. Had to hike up and out of valley to miss the canyoned steep walls of another left limit trib. + BAD brush



④ - staking

May 13 Tied up with Buff 2 #2 post and started staking upstream. I stayed tight along the canyon edge, to within reason as the edge was very poor. The left limit edge was fairly good going until the first left limit trib. at this point the brush became extremely dense, the terrain rugged up down & the canyon edge suddenly dangerous with big slabs having recently crashed to the valley floor 400' or so below. A number of big sections of ground, trees & all looked just ready to go with big cracks & splits through out them.



Ran the line back from this ~~end~~ ~~start~~ end very unstable zone in the shittiest brush I've seen in awhile. This continued up to the 2nd L.H. trib. where the terrain and the underbrush let up, with smoother slopes and bigger trees. Angled the line back into the valley floor where it was fairly good going up to where R-10 had claim out across.

(5)

May 14 Hiked up R.R. along an old trail
till it started to swing over to other
Leford of Brew Co. where I turned around.
Got back to the truck and drove back
to Carmack & on to Whitehorse.

July 18 Came into Mount Freegold camp from
Whitcomb & stayed there the night

July 19 Drove in via Kaforma Mine over Mount
Freegold, thru Antevak Zone and down into
Stoddart Cr. valley. Had to move a number
of large boulders off the road on the
final approach into the valley where
the road passes through a thick
deposit of glacial till which appears
to be running basically E-W. Made
our way over to the cabin at the forks
of what I den called Schist Cr. &
Stoddart Cr. The cabin had been built
back in the early to mid 1980's by
some previous claim holders. Had to
walk in the last 1/2 mile as the road
was washed out too bad & fix up &
clean out a bit to make the cabin ~~demmy~~
livable.

⑥ July 20 Hiked up right limit of Stoddard Cr. checking rock-gravel types. Most of the gravel was a ^{large} grained granite. Cut up and onto the ridge of sorts, found nothing but moss & brush going up. On the sloping ridge coming back into the Stoddard Cr. valley found some dyalite outcrops. There were 3 fairly distinct types of it intruding through almost syenitic granite. The first one, Sun #1, was a deep red/brown with well developed porphyritic clasts & pyrite. The second ~~around~~ 500-600 m West of the first (Sun #2) was a finer grained with some rust zones in it & the odd pyrite. The last one (SUN #3) was almost white (brige), having a little brown stain to it in places. These were the only things intruding the massive granite body (intruding or crystal fractionation off this large granite)

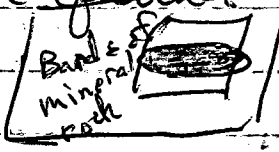
(7)

July 21 Hiked along left limit side of creek and continued up right fork. Noticed the gravels showed a more quartzy ~~type~~ a large quartz monzonite coming into them. One of the left limit trib. draining the back side of the easterly extension of the Mount Fregold ridge was almost entirely quartz monzonite gravel. Spent the afternoon panning up along this small trib. where I found some fine color along with a pan of 5 color + around 10 flyshit. This was all panned from surface material and fines from creek mass that gravels had washed over. This material looked almost identical to the Revenue Cr. gravels, which was extremely good pay. The hard rock property that this little trib. drains is a large low grade deposit ("Antonik"). The continuation of Stoddart Cr. up from this had totally granitic rock gravels in it. On the way back down crossed over to the right limit for easier

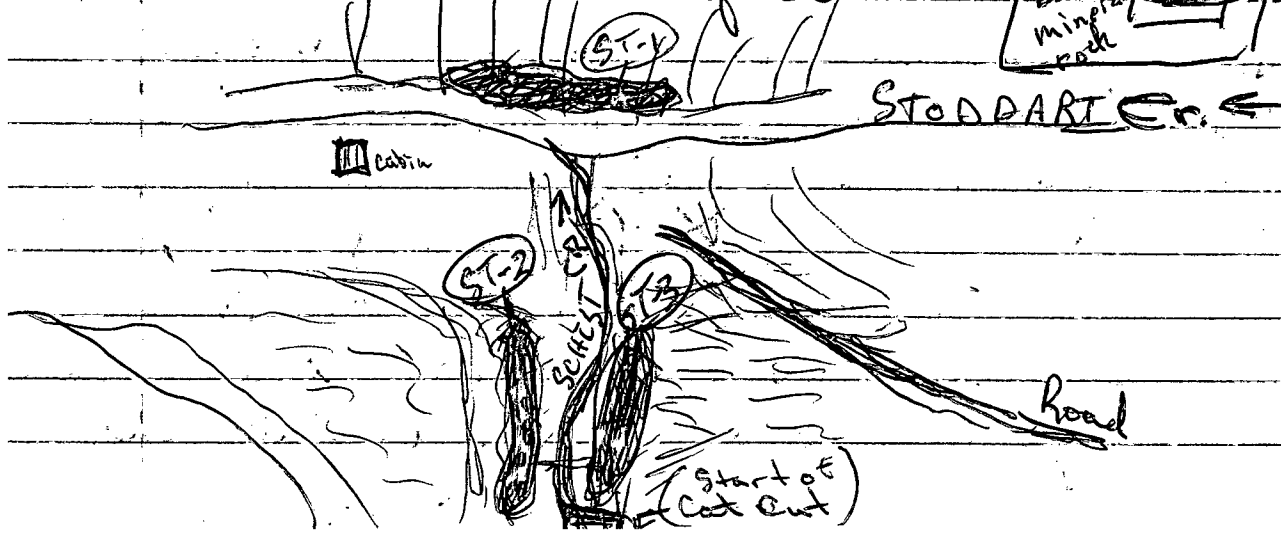
walking just before the cabin, which was on the other side of the creek, found some altered granitic with yellow stained sulfide banded rock with a high quartz content.

- ⑧ July 22 Went back across the creek and found the band of altered granite to be around 150' across (running E-W).
R.H. Bond took a sample of the vuggy-quartz
(ST#1) rich altered granitic which ~~has~~ disseminated to banded sulfides ~~which~~ These ^{were} weathering & staining yellow to green-yellow. On the left limit of Stoddard Cr. where Schult Cr. cuts thru, found some similar rock with banded sulfides in some exposed bedrock. These rocks could be seen intermittently where bedrock poked thru the gravels for around 200' up Gehist Cr. These rocks extended back into the banks of the creek under the gravel/mud lenses. Banded a bunch of different sulfides rock. The two basic types of material that came out of this were sampled.



The one was (ST-2) which had opaque blue silicious lenses/veining that had disseminated to massive sulfides running thru it. This rock had a slight schistosity character coming into it with the micaceous flakes developing. The other type + sample (ST-3) was a banded massive sulfide in (granodiorite) → that's schistosity is developing in its banding & separating. Took some pans ~~+~~ from the gravel that came off the bedrock which it was cleaning off and exposing. Found a few flyshit but no real concentration from this gravel/bedrock contact. The channel, if there is one looks like it would be further over towards the left limit.



STODDART Co. ←



(9)

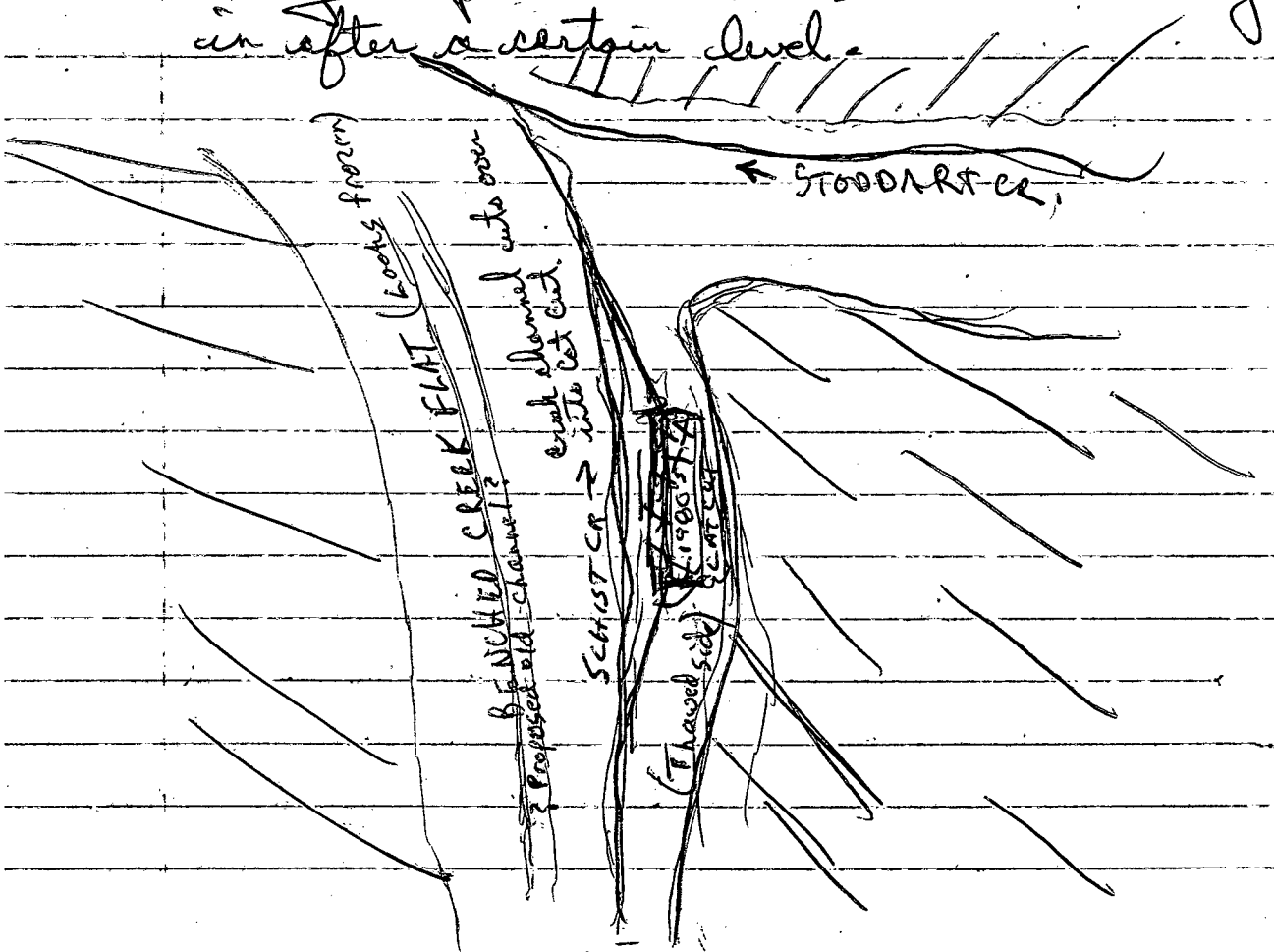
July 23 Proceeded up Schist Cr. past the
bedrock showings and old cut trench
on right limit. Sure looks like this
test cut was put in a place of
easy cat skidding & not proper placer
channel testing. The cut is hard on
the right limit in hillside sluff and
thawed ground facing WSW. The is still
5 to 7 hundred feet to left limit hillside
of valley bottom left untouched. The
most recent setting would have gone
the way of the thawed side of the valley
which was the right limit. The left
limit side would have a better chance
of an old intact placer con., as well as
the contours of the valley looking lining up
with side. } Come across some old wing
dams and hard stacked boulders from an
old hand-mined open cut. } There were
also a number of old rotten pyramid
topped posts   The gravels were
a mix of good looking quartz, schists &
Amphibolites as well as some fine & coarse
grained granites. The bedrock showed

Where valley
narrows.

exposed
bedrock on creek
edge

in a few places, around 1/2 mile up, coming
out of the creek, it was schistose in
character which was running (the bedding)
almost perpendicular to the creek flow.

~~also~~ This configuration is another plus
in placer con formation. Took some pans
from under a few boulders and got three
flyshit in one, 2 in another along with
some black sand. I couldn't get down
very deep as there was water coming
in after a certain level.



(10) July 24 Bill and I went staking the main
Stoddart Cr. Noticed a few prospect
diggings, but no real old mined areas.
Didn't spend any time looking for them
though as there was a lot of time to
cut. The upper 1 1/2 mile did have a
cat trail that was ~~some~~ followable
~~in spots~~ for some sections of the line.

(11) July 25 Finished staking the rest of the
claims on the upper end of Stoddart Cr.
& Schist Cr. Got back to cabin & Bill
took off to take care of some things
on the other side of the mountain.
I decided to stay for a few more days
to check more of the ground out to
figure out a shaft site for later on.

(12) July 26 Walked up Schist Cr. to the old
hand workings and started to dig
where they appeared to have left
off. The water was coming in where
ever I went below a certain level,

so I started to trench / ditch at the start of the old channel that the creek was running through. This was around 30' from the end (upstream face) I managed to lower the water level down around 2' after trenching to within 5' of the face. There was still no sign of bedrock. After gaining another 6" I could see that without widening my trench / ditch a fair amount I wouldn't be able to get any more depth. This would entail moving the material I'd already ditched onto the h.h. creek side. Figured I'd need a wheel barrow and at least a couple days as I still didn't know where bedrock was. I must have been close as there was a real boulder layer developing where I left off. The odd fine color could be seen in the pan but no con worth any mention. The creek gravels in the main gut of the creek look to be all thawed. Where the black muck layer comes in the permafrost

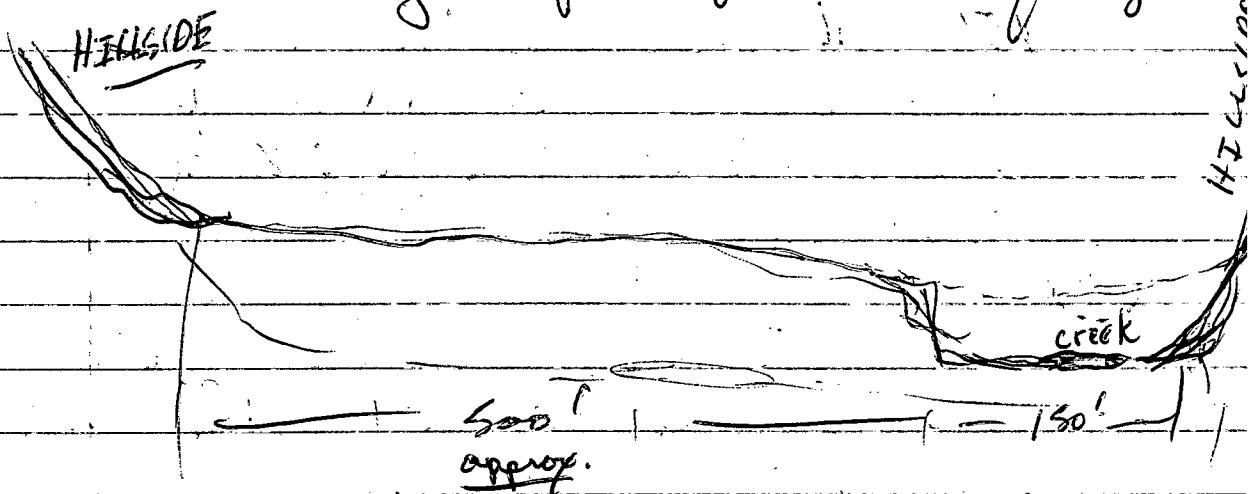
also does the same. This happens intermittently up the length of the creek. Easier shafting would result in the permafrost areas.

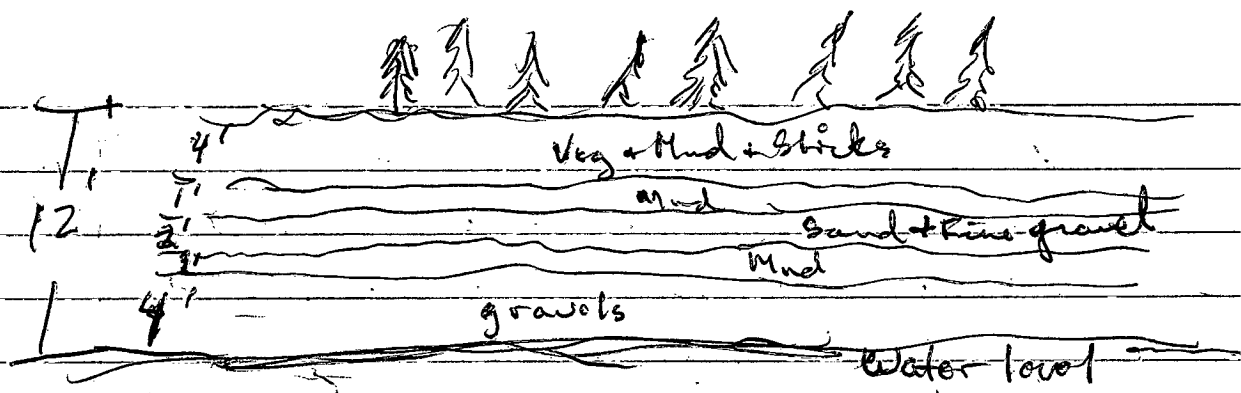
(13) July 27 Along the bottom 3000' of Schist Cr. a bench left limit creek flat developed strongly to become a left limit bench of Stoddard Cr. ~~from there down~~. This I followed downstream for a distance of around 2 miles. This bench area looks to be frozen ~~to~~ from all the moss, nigger heads, & stunted spruce along with ^{1/2} basically facing North face. An older channel would have almost definitely gone through here at the first L.L. trib. below Schist Cr. I found more old hand workings where this little trib. had cut this left limit bench. It lined up with the back channel coming out of Schist Cr.'s left limit. The bench narrowed from here a bit then widened

where the next L.L. tril. come in. The bedrock and gravels that I found & saw were of granitic (mostly) origin here. After this the bench pinched out and looked as if it continued on the R. limit. The best spot was definitely, by the look of channel development and surrounding bedrock type at the mouth of Schist Cr. in the centre of the Left Limit Bench.

(14)

July 28. Went up to cat cut at the mouth of Schist Cr. and started digging thaw/shaft back from left limit edge/face to see if bedrock could be seen on this side. There was alternating bands of fine gravel & mud along this face of around 12' height.





The water level prevented much digging below it. No contact could be found in the three places I tried along this face. I'm sure it would be frozen once you got in past the surface thaw. It would be worth, once the frost hits, to incline a drift ~~in~~ from this face to the gravel bedrock contact. ~~at~~ This could be continued for a ways to check a portion of the valley bottom. 15' would be a reasonable distance before a shaft should be put down for work efficiently in gravel removal by hand.

⑤

July 29 Decided to come back with steaming gear after the frost sets in. Closed camp up & headed back over the mountain.

Sept 9 Rob & I got our last bit of gear together and headed out to Brew Co. Got in late and camped out in Rob's Van.

⑮ Sept 10 Rob & I hiked up canyon panning & trying to figure on a spot to dig in and find a prospect worth chasing. Decided on the last real narrows at the corner $\frac{1}{3}$ mile up from the mouth of the canyon. There were a whole series of boulders that looked as if they could be a good trap. Started digging in behind one of the biggest boulders checking gravel on and in between them & found a little con. & fine gold but nothing worth saving. It was raining a bit and some rocks started to fall off the upper canyon walls to crash on the valley floor 40 ft. away. That was just a little too close for comfort so we headed back and set up camp.

(16)

Sept 11 It was n't raining so we went down and continued trenching up under the boulder trying to find a solid layer that would hold a placer con. We dug until we were underwater almost 2' up under the boulder. There was still nothing solid when we finished, so took a few pictures, ~~to~~ climbed up out of the canyon. The volume of material moved was 6' x 5' x 6'. (slate/shale mostly)

(17)

Sept 12 We took a hike up past the canyon where the rock changes along with the valley shape. Followed the right limit trib. that comes in just above where G.R. 1 & 2 were taken at the canyon head. It cuts a large body of glacial till also. Some of the bedrock was somewhat blocky and hard, looked like a quartzite, which came up out of the creek channel. There was around a foot of

gravel overlaying one of the hollows
of this exposed creek bottom bedrock.
Upon digging thru this reconcentrated
assortment of gravel we found one
pan that had around 10 color and 2 flint
in the blocky bedrock. This was around
700 yds. up the trib. Found little
else than that as the large layer of
glacial till seemed to cover everything
in this back valley. Brew Cr.
appears to have reconcentrated
a large strath of glacial outwash.
By the look of the canyon it would
act as a funnel from the steady
decay of its own local rock might
not offer a sluice box configuration.
The actual flares and gravel
drop/flats below the canyon would
I think offer a better environment
for the build up or concentration
of similarly dense materials. In
this sense it would not be a
bedrock concentration of gold. From
what I've heard & seen of the mining
below the canyon this is to be the case.

Sept 13 Broke camp and headed back to Whitehorse.

Nov 1 Left Whitehorse and stayed the night at the junction of Bowls & Seymour Cr. in Glenn & Bill's cabin. Kept the skidoo on the truck as the snow wasn't very deep. Stopped and picked up steaming gear A at the bottom of Caribou Cr.

(18) Nov 2 Drove to the bottom of Brizzly Gulch road and put the chains on. Made it up and over the mountain with hardly any problem; found Noranda's ^{Imperial} Part block of claims and staked it. #1 to #6. Some good numbers in Au, Ag had come out of the shaft on Part #4 which was put down in the 30's. Continued on down to Stoddart Cr. Parked before the road got too rough and skidooed down to the cabin, & got a fire going.

(19) Nov 3 Went back up to the truck and got the steaming gear & brought it down to the old cat cut where I figured to ^{put} in the drift. The frost ~~was~~ ^{is} in ground ~~hard~~ now, I could start drifting now no problem. Will wait till Bill comes back though. Dropped off the gear at what looked like an easy set up at a reachable distance to drifts. I cut some fire wood and support poles & called it a day.

Nov 4 Chinked up the cabin, cut fire wood & hauled it in with the skidoo, did some splitting and cooked good stew.

Nov 5 Loaded up the skidoo & left for Dawson till Bill gets back from Bolivia.

Nov 6 - Left Dawson for Montana Co.
Got fire going and went up to see
Ven to plan our day ahead, set,

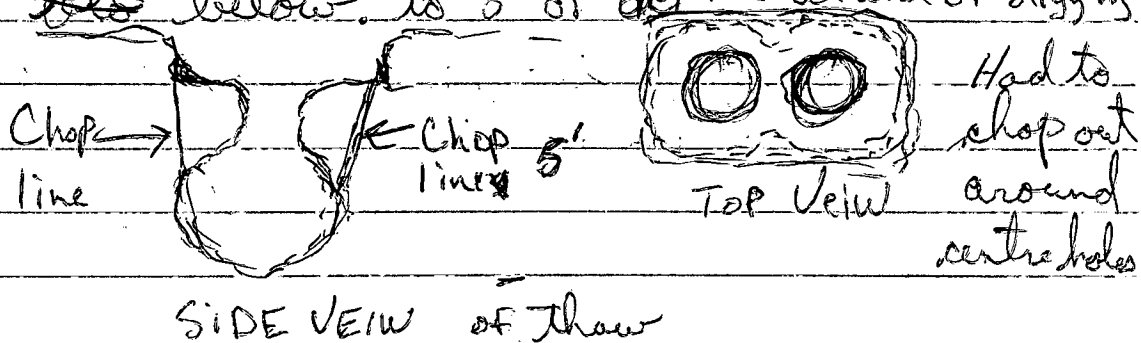
20 Nov 7 - Took off for the upper end of Stowe Co.
to dig a shaft where an old
quartz conglomerate channel looks
to ~~be~~ cut by the present day
Stowe Co. The trail was a mess
torn up by Terry T.'s rats (let we forget)
and we had to cut around a lot of
it. Making it to Conglomerate Cr.
by the end of the day was a real
chore & sweat.

21 Nov 8 - Finished trail to shaft site and
pulled in gear. Prepared site for
steaming by shoveling, chopping &
putting up hanging poles.

Nov 9 Got a steam hood for the tank and
 (22) squared in the shaft top by chopping
 down a foot into the block
 much. Had to go back to find a
 gage and blow-off valve as it
 wasn't with the gear. Found them
 back at the shed around dark so
 called it a day.

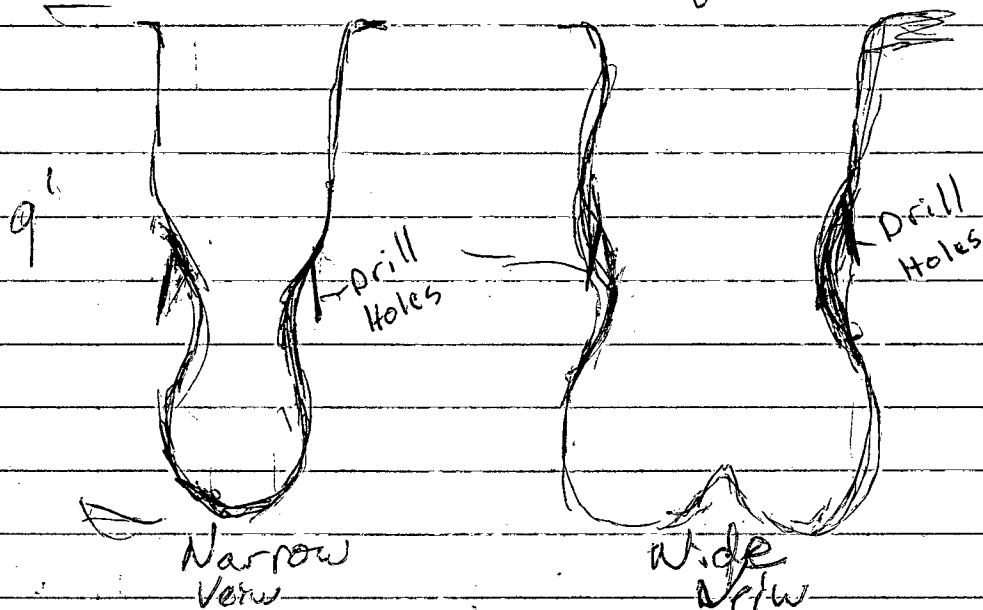
(23) Nov 10 Steamed first round. Top of shaft
 didn't seem to thaw very good.
 There is still water flowing in this
 upper end of Stone Cr. which is a
 bonus for making steam.

Nov 11 The top of the hole thawed badly
 so we had to bar out the top of
 (24) the hole to match the thaw pocket
 below. to 5' of depth at end of digging.



Nov 12 Steamed a round and hung up
(25) The hoses, cut a little more wood &
covered the hole. The points we held
back at 3' to see if that would
be little bit better.

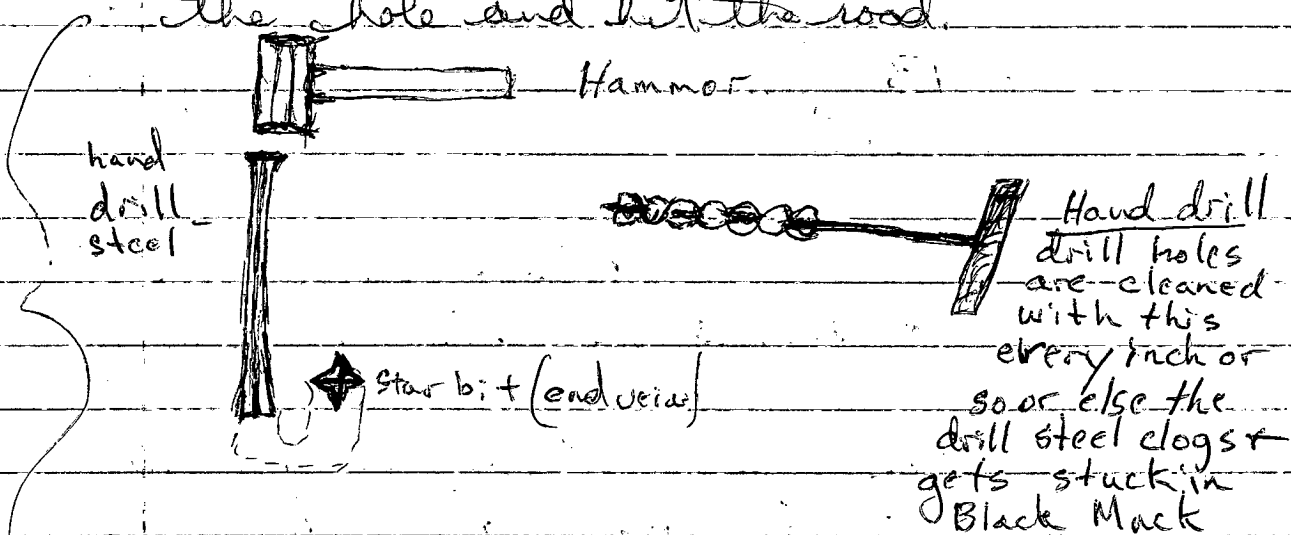
Nov 13 Mucked out to 9'. Was straight
(26) water & veg. lumpy mud. Set up the
pulley & rope for the last bit



Was still too narrow, will have
to drill (single jack) and blast

(27)

Nov 14 Got everything ready and steamed a tank into the ground and around $4\frac{1}{2}$ hrs. Held the points back to 3 ft. again. Single jacked in 3-1 ft. holes but didn't load them. Covered the hole and hit the road.



These are the single jacking tools used to square up the hole with dynamite.

(28)

Nov 15 Started to muck & get down to around 11.5' It became a little (narrowness) muck. We spelled each other off ~~and~~ single jacking another 9 holes ranging from 6" to just over a foot. To widen the hole

Nov 15 ~~Loaded~~ Loaded the holes but didn't blast them.

(29)

Nov 16 Tied on a cap and let it go.
Let the smoke clear and mucked
(30) out the frozen blasted material and
another 1.5' of thawed mud down
to 13'. This mud is not thawing worth
an shot.

Nov 17 Went into Dawson to get more
fuel & food & meet Stuart in Whse, Bessie, set

Nov 25 Came back out all loaded up.
Hauled a 45 gal. drum of gas on skis sled as
well as supplies I picked up in Whitehorse.

Nov 26 Steamed a round and soured it
over. Held the points back in a
(31) soupy mud with the old stick in
it.

Nov 27 Mucked out to 16' and drilled some
(32) holes but didn't load them. Started

to timber in the top of the hole.

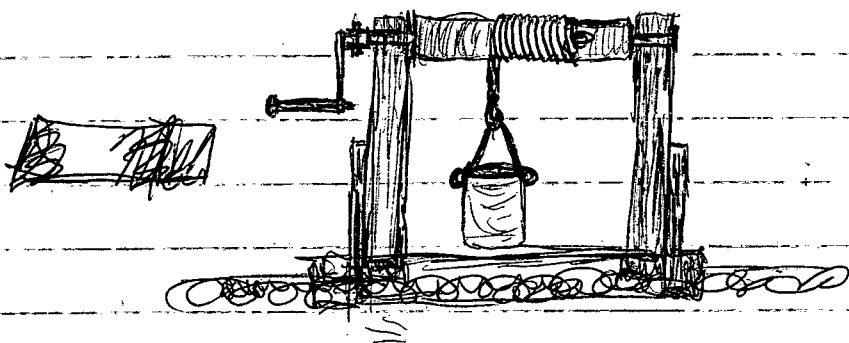
Nov 28 We finished the timbering then
(33) steamed another round into the hole.

Nov 29 Mucked the thaw out. We went
through a layer of wood which
had to be half dug, half chopped
at around 18' to 19'. Then finished
mucking to 20'. It's becoming
(34) a hard pull with a rope & pulley.
Decided to construct windlass.
Drilled some more holes and loaded &
blasted them.

Nov 30 Mucked out the blasted material and
started putting the windlass together.
Got everything framed in, need to
(35) modify the cranking, which we did
back at camp.

Dec 1 Finished the windlass and steamed a round. The points were starting to hit gravel at around 22'.

(36)

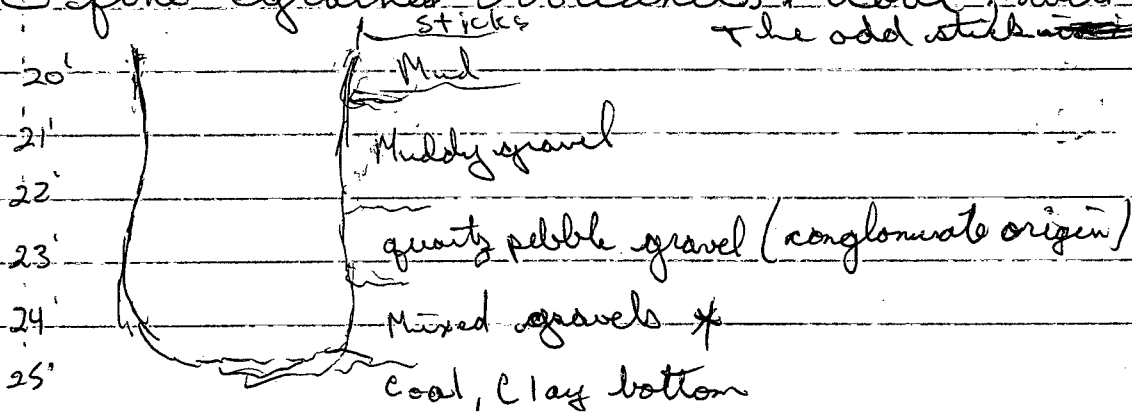


Dec 2 Upon mucking out found a sloppy gravel of quartz pebbles + some volcanics from 21' → 22.5', from 22.5' to 23.5'

(37)

there was a layer of quartz pebbles, well rounded, from 23.5' to 24.5'

* { there was a mix of quartz pebbles, conglomerate, schist, sandstone + some fine grained volcanics + coal, with the odd stick ~~in it~~

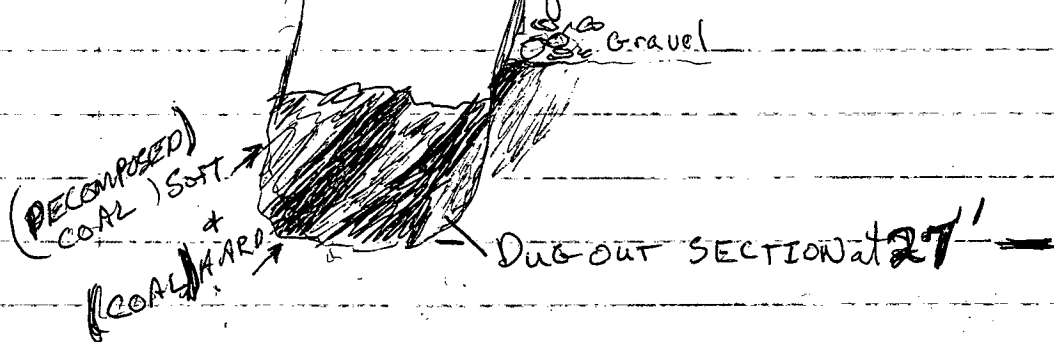


Along the bottom of the thaw there was a consistent layer of coal going across the whole R limit side of the shaft bottom, the left limit side had a dark clay. Took some pails of this gravel and panned them down, found a little black sand + garnet but no gold. The coal that we grabbed burned well with hardly any smell.

Dec 3 Steamed another round straight down. The point on the upstream side went down no problem without banging the downstream side was hard from 2 to 3 feet where I left it. The creek water was slowing down, had a hard time getting water for a steam.

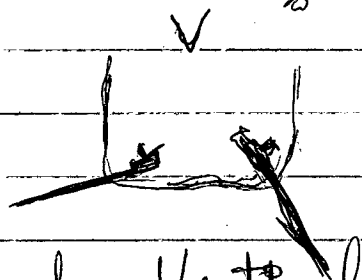
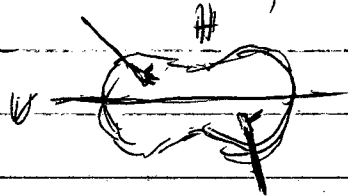
Dec 4 Dug 25' into coal layer to where I figured ~~to where I figured~~ the points could go sideways or as close as possible. The layer

was a mix of ^{coal} mud & hard coal



Dec 5 Hauled up the ^{snow} water melter for water, stove
 solid. Steamed a round trying to
 go to the left limit and the
 right limit horizontally. Because
 of the narrowness of the best
 round could only get a makeshift
 right limit, left limit horizontal
 angle

(40)



Paint
 Positioning of horizontal and vertical
 views

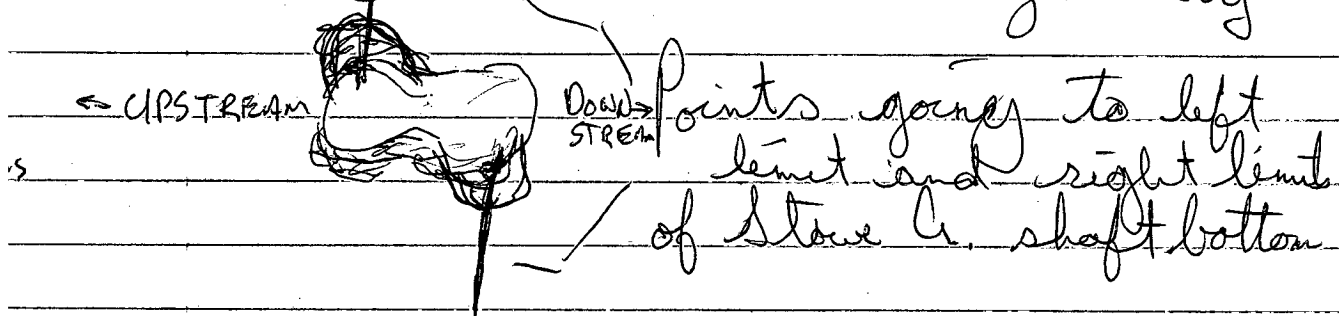


- Pipe welded to Fire box
 Drum to hold snow & water

- Snow melter

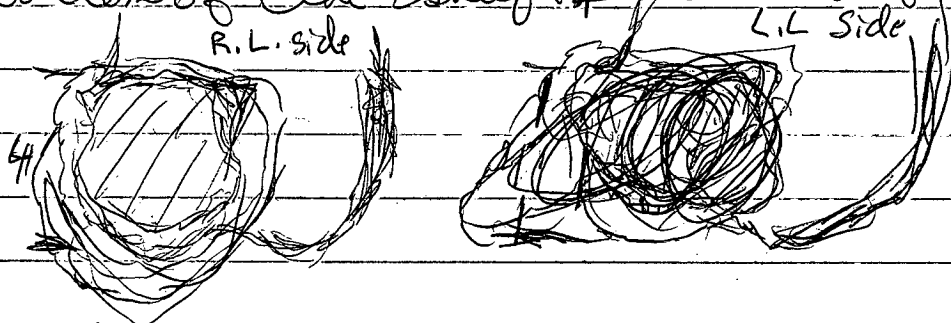
- Fire box

Dec 6 Steamed another round after
digging out some thaw so that
(41) the points could go 180° to
each other and horizontally



Finished the steam and put a sealed
tarp layer 6' above the water layer to
hold the heat down for snow thaw.

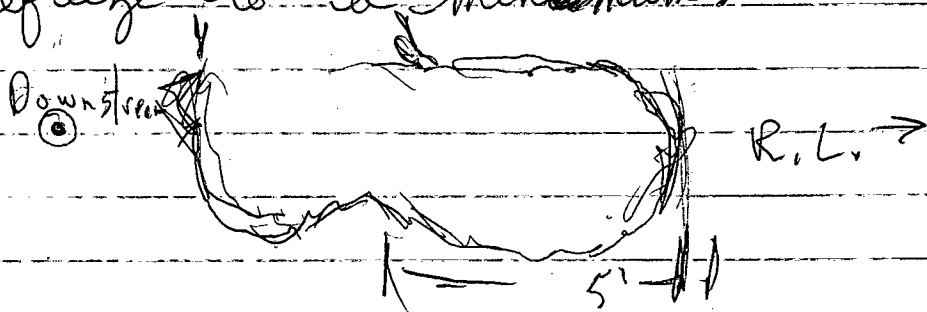
Dec 7 Dug and pulled out another foot
(42) and a half of material out of the
bottom of the shaft & into the drift starts.



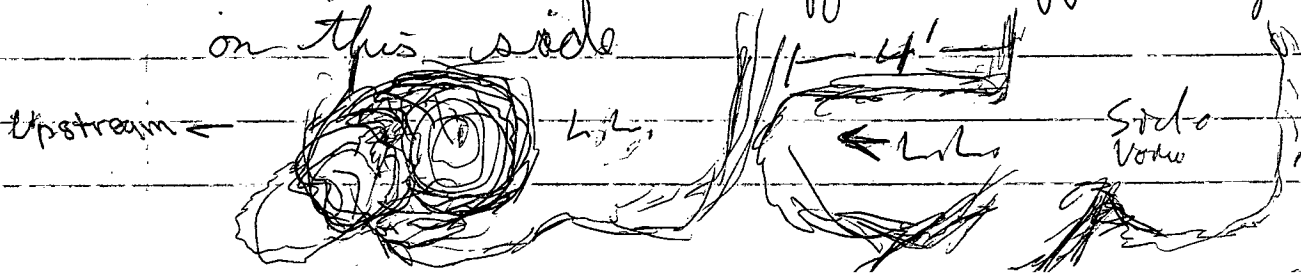
Material goes soft then hard as

it goes through intact and decomposed layers of coal. ~~and~~ Panned some of the decomposed material which had nothing in it.

(43) Dec 8 Dug out the R.L. limit side of the drifting back in $5' \times 4' + 3'$. Hit the some hard and soft seams of coal. Went and cut some wood for camp, after covering the hole up to keep the refreeze to a minimum.



(44) Dec 9 Dug the L.L. limit knobby side out. Due to the somewhat different angles the two streams went in the little caverns went off at different angles on this side.



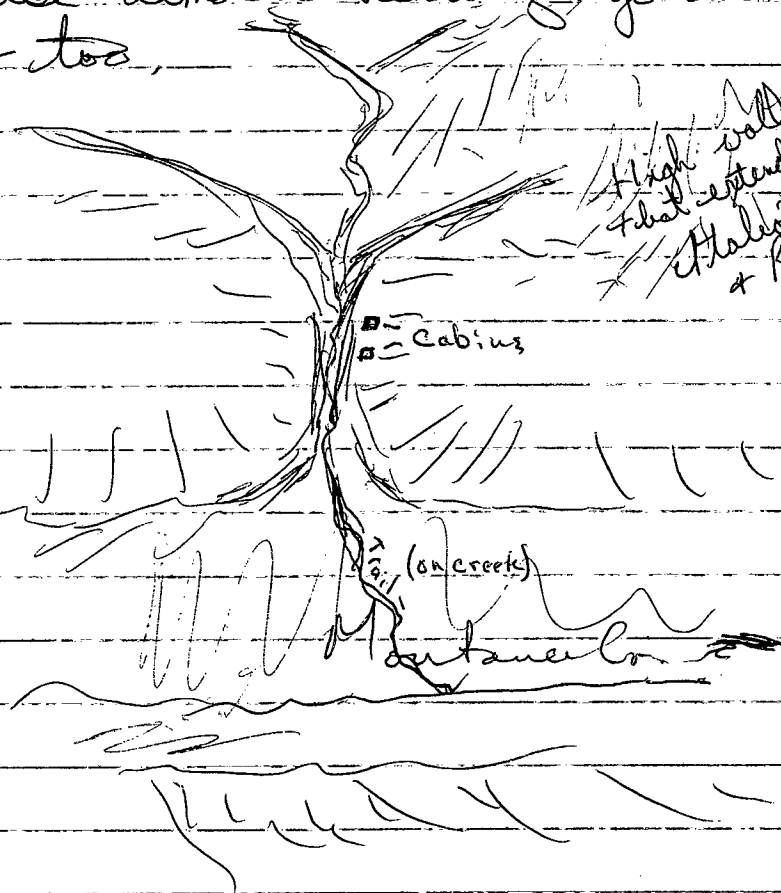
Dec 10 The coal was a little more intact
(45) on this side. Burned a little pile
of it, glowed for a long time.

Dec 11 Went to Dawson on the skidoo for
more grub, gas + a few days.

Dec 13 Came back in from Dawson over
Eldorado Cr. / Calder Cr. route

Dec 14 Went up Montana Cr. to check
a possibility for a shaft site
(46) Cut in a skidoo trail around ~~2000~~²⁰⁰⁰'
to where we were out of the Montana Cr.
benched valley. This was the first
left limit trail. past Italian Cr., almost
right across from California Cr.,
some of the side hill rocks were what
looked like ^{sheared} ~~granitic~~ ^{with} ~~gneiss~~ ~~that~~ developed
Black biotite ^{with} and pink feldspars.
Found a place where there were
a couple of old cabins around 1000'

below where the creek collects all its tributaries into one main channel. These narrows before they emptied into the main Montana Cr. valley looked to have the best potential, as someone else almost a century ago had thought so too.



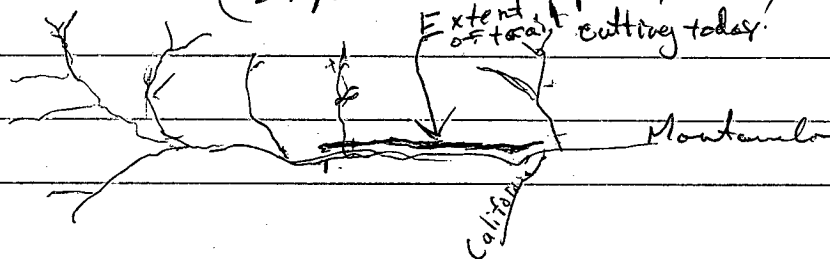
(47)

Left Fork road

Dec 15 Went up and around to the top end of Montana Cr. to see if a trail could be taken down

off the Rosebute Cr. road into the
uppermost reaches of Montana Cr.
From the looks of things it would
be ^{almost} just as much bush working.
There were some clear spots going down,
starting off, but the buck brush and
the slope canceled out this shorter 2
mile trail down. The 2 1/2+ miles
from California Cr. to upper
collecting narrows of Montana Cr.
following the main Montana Cr. valley
would be a chop but at least
somewhat slopeless, something to
think about when hauling a load.

Dec 16 Started cutting trail to the upper
(48) end. Made it to just past the (Hawk Claw
trail. (1st left limit trail, ~~past~~ going
upstream from California Cr.) by
dark. (1 3/4 miles approx.)



Dec 17 Finished the trail to the upper
narrow and found a spot which
(49) looked as good as any just below
where all the upper tribos. come
together and ~~fed~~ funnel through
this narrowest of parts of Montana Cr.
From past prospecting these hillsides
in places were harboring ~~the~~ what
looked like the right schists for placer
channel development. (Microscopic quartz, bean
Enough light was left to make it
back down and into Stowe Cr. ~~to~~
~~go~~ for a load. Managed to ^{get} loaded
and off at dark. Had a little trouble
at one glacier but made it back to
Bismark Cr. / Montana Cr. camp.

Dec 18 Got the first load of gear
upon site. Got the snow melter
(50) set up and melting, then went back
for another load. Managed to
fit all the steaming / digging gear
on the one sled and away I went.

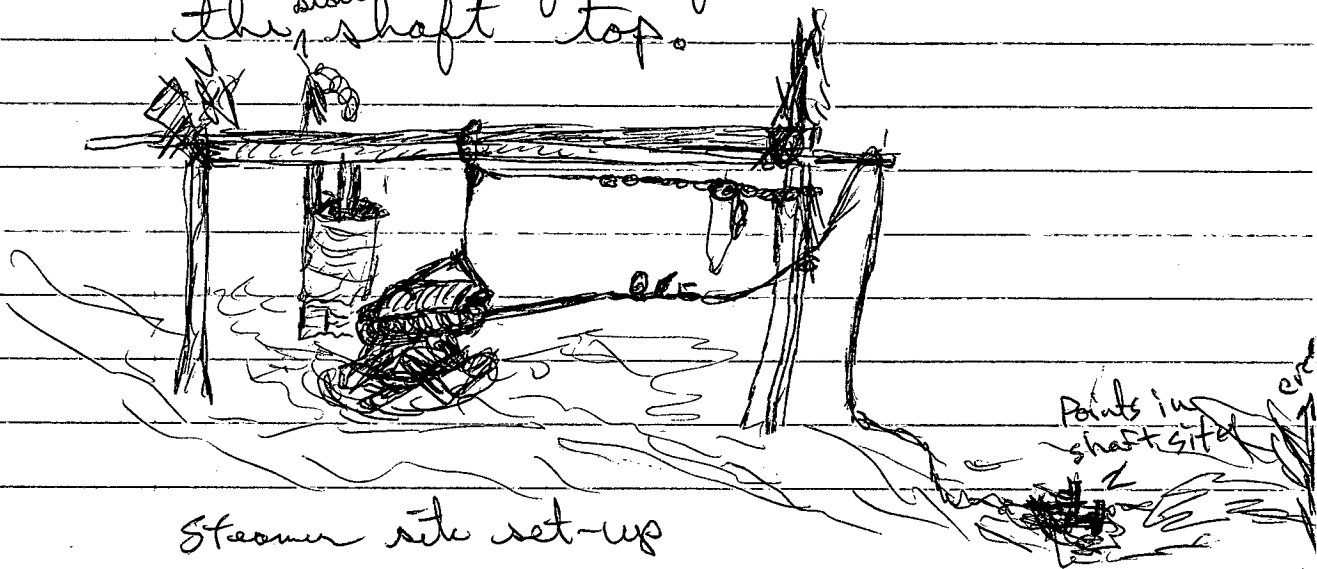
Dec 19 ~~After~~ Unloaded the sled and finished melting enough snow for a stean by the time it was dark, Stoped up

(51) the fire under the ~~no~~ snow melter for ~~and~~ the night and headed down the trail

Dec 20 Went up and finished setting up. Filled up the steamer, hung it in place, lit the fire and got the points

(52) bubbling away. Chopped the upper vegetation a bit to cause a puddle to form from the steam water.

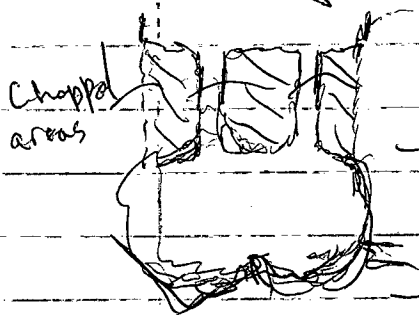
When it finished we ~~threw~~ ^{threw} the coals and fire from the stean on the ^{started} shaft top.



Steamer site set-up

Points in shaft site

Dec 21. The thaw was still not very good
There is such an insulation factor in
(53) the top vegetation layer. The top
2.0' had to be chopped and holed.
There was around 6" of thaw from
the fire but that was it. This
2' of chopping was tough, but some
bigger chunks were slabbing off
so that progress was made. Underneath
this there was a ball of thaw which
allowed the slabbing to progress the
way it did.



At around 5' down
hit a green micaceous
sand. Total depth was
5.5' which was good depth.
Melted enough snow for
a steam, stoked up the fire and
headed out.

Dec 22 Put a steam down the hole.
The points hit gravel at around 6.5' →
7.0'. Pounded them for another 2'
through this gravel and let them
(54) percolate. After it finished I
covered up the hole with a
tarp and left it for the night
for max. thaw.

Dec 23 Vern and I set up the pulley and
mucked out to 10.5'. The gravel
thawed well overnight in this material.
(55) A well washed gravel came in at
just over 7'. This gravel was almost
totally ^{50%} schist and ^{50%} quartz. Penned
some garnets and black sand out of
it also. Right at the end went
through a thin mud stick layer
10' - 10.5'. The gravels looked to
be of mostly local origin (sub-
angular) although some of the quartz was
totally rounded & iron stained.

Dec 24 Headed into Dawson, will have to finish shaft in new year.

This is probably some of the best looking material ever seen on Montana. It will be very interesting to see what bedrock holds.



NEVILLE CROSBY INC.

325 W. 6th AVENUE, VANCOUVER, B.C. V5Y 1L1

TELEPHONE USE-4343 TELEX 04-507762

MINING & FORESTRY SUPPLIES

**Waterproof Level Book
NCI #342**

MC. VAN. 99

PAUL MALKIN

IAN FRANCIS

115P

94-067

JUNE 6 94

IAN FRANCIS AND MYSELF
PAUL MALKIN WENT TO MAYO
AND UP TO WHERE CLEAR CREEK
ROAD LEAVES THE KLONDIKE HWY.
WE DEPARTED AT 8:30 AM WHEN
ARRIVED MAYO 1:30 PM DEPARTED
MAYO 3:30 MET ROGER HULSTEIN
AT MAYO GAS STATION SAID HI!
TOTAL KMS 420 TO MAYO 70 TO
CLEAR CREEK. TURNOFF A TOTAL OF
940 KMS RETURN.

TARGET IS A SMALL GRANITE, GRANODIORITE, QUARTZ
DIORITE PLUG APPROX 2.5 KMS ON THE CONSERVATIVE
TRAIL WEST OF MINTO LAKE 115P 9 (BOSTON
Geology map 1946-1999) THIS AREA SHOWED A HIGH
OF 1426 PPB AU AT SAMPLE LOCATION 1352
(SAMPLE 115P 871352) REGION SEDY WATER SAMPLES.

JULY 16/94



①

LEFT (FINALLY) WHSE AT 9 AM
DROVE TO CARMACKS TO PICK UP
IAN WHO HAD BEEN AT THE
SATO CLAIM 115-H #21 SINCE
JULY 12/94 ETA WAS 11 AM IN
CARMACKS BUT WAS POSTPONED TILL
2 PM DUE TO HEAVY FOREST FIRE
COMMITMENT OF HELICOPTER. ARRIVED
IN MAYO AT 5:30 PM FUELED TRUCK.
DROVE TO 5 MILE LAKE YTC CAMPSITE
NORTH OF MAYO SET UP TENT AT
CAMP SITE #20. DROVE IN TO TARGET
AREA 45 KM FROM CAMPGROUND MSR9.
35 KM ON THE MINTO LAKE RD. DROVE
TO BEAR OR CARLSON CRK. (OPEN FILE 1993-
10(G) KREFT) WALKED UP DRAINAGE LOOKED
AT CREEK GRAVELS AND BOULDERS AS
THERE ISNT ANY ROCK EXPOSURE IN THIS
AREA (DRAINAGE) BOTTOM. FOUND NEW FRAGMENTS
IN THE DRAINAGE BUT NO INFORMATION WAS
RECORDED ON ITS LOCATED. FORK IN UPPER
DRAINAGE AREA HAS BEEN RECENTLY MINED
FOR SOME TIME. DROVE BACK TO 5 MILE
CAMP GROUND.

DEPARTED 11 AM 5 MILES (2)

JULY 17/94

MADE OUR WAY ALONG THE CONSERVATIVE TRAIL PAST MINTO LAKE THROUGH THE M'LAGAN CRK. DRAINAGE, LOCATED OLD ROAD HEADING SW OFF THE MAIN TRAIL. FOLLOWED TILL WE CAME TO THE BEAR OR CARLSON CRK DRAINAGE DRAINAGE ROCK IS MOSTLY PHYLLITE WITH SOME QUARTZITE. WE FOUND NO ROCK EXPOSURES IN DRAINAGE HOWEVER. THE CRK IN THIS IS IN A DEEP RAINE ON THE NE SIDE OF THE DRAINAGE THERE ARE EXPOSURES OF PHYLLITE OF THE YUKON GROUP. DRIVEN BACK AT 5 MILES LAKE AROUND 6 PM MET DANIELE HEON. AT CAMP GROUND. EXPLAINED MY TARGET TO HER. SHE SAID THAT THE CONCLUSION ON THE GOLD ANOMALY ON THE REGIONAL STREAM BEDY SAMPLE HAD BEEN THAT THE GOLD WAS IN OVERBURDEN GLACIAL DEPOSIT AND NOT LOCAL. DECIDED TO

GO TO CLEAR CRK AREA OF McQueston. Mon. JULY 18/94 (115 P 14) HAD LUNCH TO MAYO, THEN DEPARTED FOR DAWSON claim office as we couldn't get the claim info in Mayo we needed for NTS. 115 P 14 Arrived in Dawson @ 1:30 pm Departed for Barlow Dome arrived at Dome 3pm. Made camp at km. 2 + 10 ft.

The Clear Crk Rd. located old
cat road that runs from highway
Clear Crk Rd NW toward Syenite
Mt. Traversed down this cat road
for 2 kms. RETURNED TO CAMP. Decided
to traverse to Syenite Crk across
the Little Klondike River.

^{Tues}
July 19 - started out at 9am Followed
old cat road to a point where
it switches back down into the
drainage. We carried on
over the top of the ridge down
into the Little Klondike River
Drainage. We found a tree across
the river due to the banks being
undercut uprooting trees. We
crossed carefully. We prospected
gravel bars along the river
down stream. then headed toward
the crk SE of Syenite Crk
found old 1920's? log cabin and
what seemed like old placer
working close to the confluence
of this crk. at Klondike River.
We then went over the ridge

that separates this drainage
and Synerite Crk drainage
to the north. We took a
soil sample (SAM.10 CABIN CRK)
at this ridge these drainages
originate on Synerite m.f.
We made it into Synerite Crk
drainage and followed it down
to the continuation of an
old cut rd. we had started
our traverse on. came to the
Little Klondike River Crossing
of this cut track stripped
off and waded across
(cold) and (RUGS) worked our
way back to our ridge and
back up to the Clear Crk
Rd. arrived back at 9pm
EXHAUSTED to camp. Decided
to head back to WILSE Next
day. HAVE to talk to KAREN about
using HELICOPTER to EXPLORE
across Little Klondike as
crossing it is dangerous.

JULY 20 

(5)

Wake up to a very-moist morning
Gamm had a ulpit-by-something at
3³⁰ couldn't keep my dog from
growling but kept myself awake
Packed up camp departed for
Whse road very wet and slippery
rained all the way till Lake Laberg
arrived in Whse 4pm. Phoned
Karen's office talked to Shirley
about project plans told
Karen away till the 5th Aug
Slept well?

JULY 20 wrote, researched, relaxed,
and saw Shirley planned next
excursion

JULY 29 ☀️ AND CLAIM ①

ARRIVED FROM QUIET LAKE THIS MORNING SLEPT AT MOOSE LARK LAST NIGHT. STARTED TRAVERSE SOUTH TOWARDS DRAINAGE EAST OF SQUAW CRK. DRAINAGE. TOOK SAMPLES ALONG TRAVERSE SAMPLES:

- R-001 QUARTZ
- 295m R-002 ALTERED QUARTZITE
- 250m R-002 GRAB
- 345m R-003 BRECCIA ?
- 590m R-004 GRAB
- 2000m R-005 BRECCIA OR CONGLO
- 2570m R-006

TRAVERSED ALL THE WAY DOWN TO THE CRK. FOUND OLD PLACER WORKING... NEWSPAPER CALENDER ETC 1989 FOUND PLACER CLAIM POST: ELDORADO CRK .MI POST 2 POST 1 POST IS DOWN STREAM MAURICE GERVAIS PLACER JULY 22/88 34436

THIS DRAINAGE IS ELDORADO CRK WENT BACK TO CAMP.

E.O.T 7pm

JULY 30



(2)

STARTED TRAVERSE TOWARDS (SOUTH)

ELDORADO CRK AT 7:45 AM. DROVE DOWN

RD AT PICKED UP YESTERDAY'S SAMPLES

WENT DOWN TO CRK TOOK MORE

SAMPLES FROM IN PLACE

R-008 PORPHYRY BOWDER (FRESH OXIDATION)

R-009 "HORNFIELD"?

R-010. ALTERATION

WALKED UP DRAINAGE. DRAINAGE AT

THIS POINT CUTS THROUGH INTRUSIVE

ROCKS (GRANITE GRANODIORITE QUARTZ
MONZONITE) - (BOSTON GEOLOGY MAP 1946-49)

LARGE PORPHYRY BOULDERS COVER

THE DRAINAGE BED. WE WALKED

UP DRAINAGE ACROSS CONTACT

WITH ROCKS OF THE YUKON GROUP

QUARTZITE SCHIST. TO THE EAST

ROCK EXPOSURE IS OF THE INTRUSIVE

ROCKS AND ALSO TO THE SOUTH AND

WEST AREAS OF CONTACTS SEEM

EXTREMELY WEATHERED AND THEREFORE

COVERED BY OOSE BURDEN IN RECESIONS.

ARRIVED BACK AT CAMP AT 4:30 PM.

JULY 31



(3)

WENT TO DEMASTER CORNER LAST NIGHT FOR GAS AND A MEAL. WASHED IN THE KLONDIKE RIVER (GREAT) ARRIVED BACK AT CAMP AT 10 pm. WE HAD INCREDIBLE WIND & RAIN STORM LAST NIGHT. FROM 12³⁰ AM - 3 AM. THE RIDGE OUR CAMP IS ON IS ~~GOING~~ ~~ERASED~~ TO THE ELEMENTS. BUT BUGS ARE NOT BAD.

TODAY WE ARE ON A RIDGE NORTH OF OUR CAMP. THIS RIDGE WAS BURNED WITHIN THE LAST 2-3 YEARS WITHIN THE BURN IS A PILE OF ROCK WHICH SEEM TO BE INTRUSIVE IN COMPOSITION.

TOOK THREE SAMPLES FROM WITHIN THE BURN AREA.

BR-111 GRAB DYKE - INTRUSIVE?

BR-112 GRAB

BR-113

SAMPLE BR-113 IS TAKEN FROM A (STONE RING) A FROST HEATING.

FOLLOWED AN OLD RD DOWN TO THE SOUTH KLONDIKE RIVER ROCK OF YUKON GROUP.

1915

GOT BACK TO CAMP AROUND 3:30pm
DECIDED TO GO TO QUARTZ CRK
ARRIVED QUARTZ CRK 9:30 TALKED
TO LON AUSTIN WHO HAS A PLACER
CLAIM ON QUARTZ CRK WATCHED
HIM PAN OUT HIS FINES AND
RECOVERED GALENA FROM TAILINGS
(FINES) HAD SUPPER WITH MR. AUSTIN
DECIDED TO INVESTIGATE SOURCE OF
GALENA IN QUARTZ CRK DRAINAGE.
WENT BACK TO CAMP 8pm.
BROKE CAMP AND STARTED OUT AT
10pm TO DRIVE TO W.H.S.E. ARRIVED
WHITEHORSE NOON AUG. 1.

AUG. 7.

③

④

-FET WHESE NOON ARRIVED CLEAR CRK

7pm AFTER GOING TO DENPOSTER CORNER

FOR GAS IN TRUCK & GERRY CAN. MADE

CAMP AT SAME SPOT APPROX 38 km

CLEAR CRK RD. ABOVE RIDGE THAT

DIVIDES SQUAN AND ELBORADO CRKS

⑤ AUG 8 W. GOT UP AT 7AM SMOKE

FROM FIRES (FOREST VERY HEAVY

THIS MORNING). DROVE TO QUARTZ

CRK STARTED TO HIKE UP right (west)

SIDE OF QUARTZ CRK DRAINAGE ON A

SOUTHERLY TRAVERSE THEN ACROSS THE

CRK QUARTZ & A RAVIDE AREA IS

COVERED WITH SSM STRENGTH SAPPING

MOSS AND OVERBURDEN. ANY OUTCROP

IS OF THE YUKON GROUP. ANY GROUND OF

INTEREST IS STAKED. TRAVERSED BACK

DOWN INTO CLEAR CRK DRAINAGE. ARRIVED

BACK AT CAMP. 5pm.

THERE IS GALENA IN QUARTZ CRK DRAINAGE.

WHERE HAS IT COME FROM?



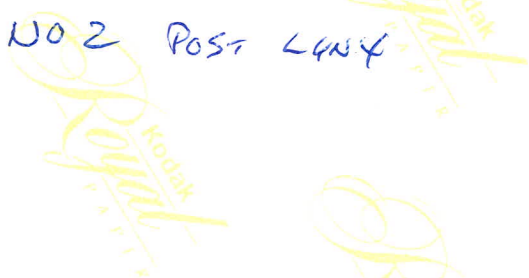
N 12
L 1018
300 L
D 114
P. 1000
10. 81

NO 1 Post LYNY



No. 2
DIA
OCT 14
1955
No. 2
1955

NO 2 POST L434



LEWIS
AUG 9 1950

(6)

GET UP AT 7:30 AM

WENT BACK TO QUARTZ CRK TRAVERSED
UP TOWARDS THE WEST RIDGE ABOVE LEFT
FOUR OF CLEAR CRK SOUTH OF THE QUENSTON
DREDGE. TRAVERSED UP SLOPE CONNECTED WITH
YESTERDAY'S TRAVERSE CAME DOWN QUARTZ
CRK DRAINAGE TOOK TWO (2) SEDIMENT
SAMPLES OUT OF QUARTZ CRK.

QCCK 101, QCCK 102. SLEPT AT
CAMP ~~AUG 10 1950~~ ⁽¹⁾ ~~STAYING~~ HOME AFTERNOON
ON THE 10TH - DUPLICATED

SAMPLES FROM BURN AREA. (JULY 31)

THE MORNING. WENT TO DEMPSTER
CORNER FOR GAS ARRIVED
WHSE 8 PM.

JULY 25/74 (1)



3:00 AM

ARRIVED QUIET LAKE CAMPGROUND
(YES) 12 NOON SET UP CAMP. HAD
LUNCH. HERDED OUT TO STATION
SOME 17 KM NORTH OF CAMPGROUND
ON THE SOUTH CANOL RD. BROKE SOME
MUCK, DECIDED TO GO BACK UP SOUTH
CANOL RD. / SOUTH TO AN OLD ROAD
ENTERING FROM THE EAST SURTHOR
UP ON THE SOUTH CANOL APPROX. 7 KM
NORTH OF THE QUIET LAKE CAMPGROUND
THIS ROAD HEADS IN A N.W. DIRECTION
AN OLD BRIDGE AT LAKE COCKER HAS
COLLAPSED AND IS IMPASSABLE. TOOK
SEDY SAMPLE FROM CREEK.
WENT BACK TO LINK SHOWING COLLECTED
SAMPLES (ROCK) 02-5 WENT BACK
TO CAMP MADE SUPPER 6:30
WROTE ROAD VENT TO BED.

JULY 26/94

(2)



Got up 8 AM had breakfast
departed Quiet Lake camp
9 AM. Went down same
road as yesterday (July 25).
Traversed in a N.W. direction approx
2 km prospecting to large outcrops
(andesite with abundant quartz tube
sand) QZ-2 - QZ-3, QZ-4, QZ-6
QZ-7 and stills QZ-1 - QZ-5
Traversed SW, intersected rd
approx 1 km N. of the point of
starting, went N. on old rd
and then headed due west toward
Quiet Lake. Very wet ground
immediately N. of to south
canyon rd. Walked back to
truck drove to collection site
at approx km 150 to have
a bath in the lake. Arrived
back at Quiet Lake camp at
4:30 pm. Made supper.

JULY 27/94



(3)

WOT OVERCAST
DAY MADE BREAKFAST. SET IN
TRUCK CAB AND DISCUSSED
PROGRAM FOR THE DAY. DECIDED
TO START AT KM 89 SOUTH
CANAL RD. AND TAKE SECS
EVERY 300m ALONG RD. ALL
THE WAY TO THE LINK TOOK
20 SAMPLES Q3-1 = Q3-23
ARRIVED BACK AT CAMP 4 PM
VERY WET. HAD SUPPER.



4

JULY 28/99.

WENT UP AT 8:30. STOPPED
RANWINE HAD BREAKFAST BEHIND
CAMP. DEPARTED QUIET LAKE
CAMP AT 10:30 STOPPED AT
LYNY SHOWING CORRECTED MOUNTAIN
RANGES THEN STRAIGHT OUT FOR
OLSON CREEK. AT NOON DEPARTED
N. TO CROSS RIVER FOR PINE
THEN EAST TO CARMACKS LOTS
OF FOREST FIRES. DROVE TO
WILSON CREEK LOTS. 12 MIDNIGHT
MADE CAMP.

Quiet Lake

July 25/95

San Francis

Paul Malpin asst

equipment - 4x4 truck 3
- silver rangers
- hammers
- U.V. lamp
- sample bags
- tape thread

Semmy and Lot

15-

Quiet Lake samples

Q1 - taken in stream
concentrated in
pan to sand size

Q2 - 50cm quartz
50cm sheared andesite

Q3 - 1m sample - 30cm brown
sheared andesite 30cm white w/iron
contacts - 40cm sheared gray
with quartz

Q4 1m sample - 30cm limonite
70cm sheared andesite

Q5B Quartz laced Volcanic
w/green/malachite?

Q5C mariposite?

Q5 Iron oxide quartz sheared
andesite

July 26/96 Quiet

Sample Q2-1

coarse grained quartz
granite sub crop?

Q2-2 Great

fine grained flow banded
minor sulfides (pyrite)
etc. is a knob of
coarse to fine grained
monzonite - float is
~~granite~~ chert and
~~quartz~~

Q2-3 top of knob

intrusive w/ quartz vein
2cm thick

Q2-4 soil north of

knob top of drainage

Q2-5 stream

Q2-6 north of stream
on flat perch

Q2-7 float dark

fine grained w/ calc

in north fork 50 m from

fork

EOT Kilo 89 Canal Rd
to 5 1/2 kilometers
and a mile pit 9 1/2 km

July 27/94 / Rain

SOIL Q3-1
Phyllite on Bedrock

Q3-2 - Horizon - Brown

Q3-3 - Loam shif rounded rocks

Q3-4 - GRAVEL SILT

Q3-5 - SKIPPED

Q3-6 - Clay-sand - Brown

Q3-7 - Black clay-organic

Q3-8 - GRAVEL wet

Q3-9 - Clay wet

Q3-10 - Clay wet - iron stain

Q3-11 - GRAVEL

Q3-12 - Clay - quartzite

Q3-13 - Gravel rounded

Q3-14 r/c Quartz

Q3-15 r/c Quartzite

Q3-16 r/c green stone

Q3-17 Sub crop green

Q-3-18 - Brown SANDY

Q-3-19 - " "

Q-3-20 " "

Q-3-21 " "

Q-3-22 O/c

Q-3-22 Rock sample Green
bedded with Quartz
with and across bedding

Q-3-23 Subcrop Bam

OCT. 1



WENT UP AT 7:30 AM
ON THE EAST SIDE TO GO UP
DOPE FROM SHOWING. THERE IS
A LOT OF OUTCROP AS SLOPE
IS STEEP 35° - 50° THE TREES ARE
SCARED FROM ROCKS ROLLING (FALLING)
FROM THE TOP OF THE RIDGE.
FROM THE RIDGE TOP YOU CAN
SEE QUIET LAKE TO THE NORTH
AND SW AND THE NISUTLIN
RIVER AND NISUTLIN BATHOLITH
TO THE EAST. FOUND A LAKE ON
TO A ~~WATERS~~ RIDGE. TO THE SEWN.
SLOPE IS GENTLE ON THE EASTERN
SIDE OF THE MT. HEADED NORTH
ALONG EAST SIDE OF RIDGE.
NOT MUCH ROCK EXPOSURE ON
THIS SLOPE. WENT AROUND
SHOULDER AND WENT ~~ACROSS~~
SLOPE BACK DOWN TO SOUTH
CANYON RD. FIRED FLAT TIRE
ON TRUCK WENT BACK TO CAMP
ARRIVED HERE AT 5:00 MADE
SUPPER.
BAGGED SAMPLES.

Samp 96

STN.	Depth.	Texture	Colour.	Shape Fragments	Ca.
------	--------	---------	---------	--------------------	-----

Oct. 2



Got up at 800 HAD

~~WAS~~ COLDER THIS MORNING.
 QUITE A FEW HUNTERS CAME INTO
 THE CAMP SITE LAST NIGHT ~~STAYING~~
 ETC. MET SOME HUNTERS S. NORTH
 OF THE "STOWING" SO I THINK
 I WILL STAY SOUTH O.K. IT

TODAY. STARTED OUT HOPPING DOWN
 TO THE SLOPE HORIZON S.E. VERY
 NET GROUND SO I HEADED NORTH
 UP THE SHOULDER TO WHERE I
 WAS YESTERDAY. NICE VIEW FROM
 UP ON TOP. THINK I WILL GO DOWN
 ALONG THE WEST SIDE OF THE RIDGE
 TOOK SOME ROCK SAMPLES OF
 OUTCROP STILL DARK GREEN AND
 TO GRAY WEATHERED FOLLOWED SAME
 ROUTE DOWN TO RD/SOUTH CANAL
 WENT TO ~~WORK~~ TO ~~WORK~~ GOT BACK
 TO CAMP SITE AT 400 ~~SIGHT ONLY~~
 HAD SUPPER
 RUBBED ROCKS

SAMP. 7 20 GUS CROP

SAMP. 9 21 FUL CROP

MON OCT 3



DECIDED TO TO ALONG TRAIL
FOR A FEW DAYS ALONG THE EAST
SIDE OF THE (LYNX MT) AMONG AN
OLD LOGGING? RD THAT RUNS
BETWEEN THE MT AND THE NISUTLIN
RIVER TO THE EAST. LEFT TRUCK 9 KM
NORTH OF CAMP GROUND. STARTED OUT AT
11 AM WITH ENOUGH SUPPLIES FOR A FEW DAYS
I HOPE TO MAKE IT TO THE SOUTH
CANOE NORTH OF THE TRANSPORTATION
MAINTENANCE CAMP AT KM 100 SOUTH
CANOE. ALONG OLD RD THERE WAS
RECENTLY BEEN LOGGING WITH AREA.
I HOPE THAT THERE ABOUT MANY
HUNTERS OVER ON THIS SIDE. AREA
IS HEAVILY FORESTED WHERE NOT
LOGGED CHECKED KNOW TO THE WEST
AND HEADED TOWARD TWO HUNTER
KNOWS TO THE NORTH WEST. AREA IS
INTERMEDIATE GROUND IS REALLY NOT
BETTER CLOSER TO THE MT SIDE
MADE CAMP BETWEEN TWO KNOWS
DRIED BOOTS AND ATE.

OCT. 4

63

WIND MY DOG WENT CRAZY
LAST NIGHT MUST HAVE BEEN
SOMEWHERE AROUND. GOT UP AT
8:30 TO RAIN DRIZZLE. BRUCE
~~CAMP~~ AND HEARD NW CHECKED
AROUND KNOLL AND HIKE DUE
N. A LITTLE DOWN SLOPE AND
TO THE EAST FROM SAT. TRAILHEAD
CAME TO CREEK DRAINAGE HEAVY
MOSS. CAME BACK ONTO OLD RD
MADE CAMP ON CREEK AT RD.
LEFT MOST GEAR HERE AND TRAVEL
BACK SOUTH ALONG RD. CAME BACK
TO CAMP HAD SUPPER HEARD
SHOTS QUITE CLOSE. AFTER
DARK WENT TO 360 TENT
SMELLS OF WET DOG ON WALLS

OCT. 5.

GET UP AT 7:30 STAYED IN
BAG TILL 9:00 HAD SOME CEREAL
PACKED MY GEAR COLD HEADED
NORTH ALONG OVERCROWN RD
MOSTLY FOREST AND MOSS
NO OUTCAMP CAMP ~~TO~~ OLD
FORK IN RD TOOK ~~WEST~~
FORK CLIMBED OUT KNOLL
TO THE NORTH EAST TOOK
SOME SAMPLES. CAME TO
SOUTH CANAL RD AT ABOUT
4:00 LEFT PACK ETC IN RUSH
AND STARTED SOUTH ON CANAL
RD. WALKED TILL 6:30 GOT RIDGE
TO TRUCK WENT TO GET PACK
GOT TO QUINN LAKE CAMPGROUND
AT 8:00 MADE A BIG SUPPER
FOUND OUT I LEFT MY HAMMER
AND SAMPLES BACK AT LAST
SOMEONE SAYS WILL GET THEM
TOMORROW.

Q. 22 - GREEN W QUARTZ.

○
CALCITE
FIZZES

~~Q. 22~~

Q-23

ROUNDED QUARTZ
ROCKER

WITH LARGE
PYRITE CONTACTS

OCT. 6

83
A 100

WOT UP LATE 900 HAD BREAKFAST
LEFT CAMP AT 1030 DROVE TO POINT
NORTH OF HIGHWAYS MAINTENANCE
CAMP QUIET LAKE. PICKED UP PACK
AND TENT & SLEEPING BAG. THEN HIKED
IN TO WHERE MY HAMMER AND SAMPLES
WERE. GOT BACK TO TRUCK AT 2 PM
WENT BACK TO SHOWING THEN WENT
BACK TO QUIET LAKE CAMP GROUND
BROKE CAMP AND HEADED BACK TO
WHITEHORSE ARRIVED WHITEHORSE AT
SUPPER

OCT 13

CAME TO QUIET LARGE CAMP GROUND
LAST NIGHT - ARRIVED AT 9:30 PM
HIT SNOW ON THE WAY HERE, IT
RAINED LAST NIGHT COOLER THAN
LAST WEEK. TOOK SAMPLES IN TO
LAB ON TUES SO HAVE DECIDED TO
STAKE ONE UNIT TO HOLD INACTIVE
WILL GO OUT TODAY TO TAKE SOME
SOIL SAMPLES AND TO PROSPECT AREA
ABOVE SHOWING BOTH NORTH & SOUTH.
LEFT CAMP AT 9:00 AM A LOT OF
HUNTERS AROUND DRINKING ETC. SNOW
IS QUITE LOW. EXPOSED GROUND IS
FROZEN. WENT ALONG CONTOUR THEN UP
SLOPE TO THE NORTH THEN ALONG
CONTOUR TO THE SOUTH. TOOK
SOME SOILS AND TOOK SOILS AT
SHOWING. ~~CAME BACK TO CAMP~~
AT 4:00 TO MAKE SUPPER. I
HAVE DECIDED TO STAKE TOMORROW
WEATHER PERMITTED.

105 F-3

Post 2

NO. 1

NO 2

LYNX

LYNX

N

OCT. 14
1999

1200' R
300' L

PAUL
MALCIN

OCT. 14

12:30
pm

1999

PAUL
MALCIN

10 AM

LYNX CL. LN. @ 6.2 km NORTH FROM LAKE CRK.

NTS 105 F 3

LAT. 61° 06' LONG 133° 03'

LYNX CLAIM IS LOCATED APPROX
17 km NORTH OF THE QUIET LAKE
Y.T.G. CAMPGROUND ON THE SOUTH
CANAL ROAD

OCT.

Paul Malcin

Oct. 14.

COT UP AT 8³⁰ COOL HEAD
BREAKFAST HAVE PLANNED
WAY TO STAKE SHOWING COT
TO SHOWING AT 9³⁰ START TO
STAKE AT 10 AM. TOOK SAMPLES
ALONG BLAZE LINE. FINISHED
AT 12.30 CUT MY HAND NOT BAD.
TOOK SOILS AT SHOWING WENT ACROSS
RD (SOUTH CANAL) AND PROSPECTED
AREA BELOW SHOWING DOWN TO LAKE
QUITE LARGE AREA PLUS FOUND
OLD RD ALONG LAKE FOUND
SOME FLOAT ALONG LAKE SHORE
LIKE ROCK JAMP. 9-7 HIKED
BACK TO SHOWING ARRIVED BEE
AT SHOWING AT 5⁰⁰ HAD SUPPER
WROTE AND READ. SLIGHT RAIN.

OCT 13

LYNX SOIL - SAMP (LETTER) (DIR)

LXS-AS	BROWN	ROCKY
LXS-BS	L BR	CLAY
LXS-CS	L BR	CLAY-LESS
LXS-DS	"	"
LXS-ES	1.5 M N OF LXS-DS	
	ALTE ALTER CD. BROWND.	

OCT 14

POST 1

NO. 1

LYNX
N

1200' R

300' L

OCT. 14

1994

PAUL

MALKIN

10 AM

NO. 2

LYNX

OCT. 14

1994

PAUL

MALKIN

12 30 PM

OCT. 15

GOT UP AT 8³⁰ MADE BREAKFAST
LAST NIGHT I HAD A GOOD
SLEEP. SOMEONE DROVE INTO MY
CAMPSITE AT 3³⁰AM ON AN ATV
THEY KEPT THEIR LIGHTS ON
MY TRUCK FOR SOMETIME
THEN ROLLED OUT AND LEFT
I DON'T THINK BEING HERE ON
WEEKENDS DURING HURTING SEASON
IS A GOOD IDEA (TO MANY GUYS)
I LEFT CAMP AT 10 AND WENT
TO SLOWING THEN WALKED NORTH
ON THE SOUTH CANAL RD TO
WHERE IT RUNS CLOSE TO THE
LAKE. LOCATED OLD RD AND FOLLOWED
IT ALONG LAKE SHORE PICKED
SOME MORE FEAT FROM BEARS
CAME ACROSS SOUTH CANAL AND
COUNTERED BACK TO SLOWING
(TRUCK) RUCK AT CAMP AT
4³⁰ HAD SUPPER.

OCT 16

AWOKES AT 800 THIS MORNING
WAITED TILL 830 FOR IT TO GET LIGHT.
HAD BREAKFAST (GOOD) NOT A NICE
DAY TODAY WEATHER WISE. LEFT
CAMP AT 10. WENT TO WHERE I
LEFT HAMMER TO TRY AND
FIND MY DAVIDS ARMY KNIFE
NO LUCK - MAYBE IT WILL SHOW
UP. TOOK A BETTER LOOK AT THE
N.E. SLOPE OF THIS KNOLL. THIS
KNOLL IS APPROX 5km N OF LYNX
SHOWING THERE WERE MAG LEWIS
RECORDS IN THIS AREA. RAN
ACROSS A COUPLE OF HUNDRES
THING TO LEAVE. BACK TO CAMP,
40° HAD SNIPPER ROAD AND
WENT TO BED.

~~OCT 17~~
OCT 17 GOT UP AT AT 830 MADE
BREAKFAST TOOK DOWN CAMP
PUT 5gals GAS IN TRUCK HOPE
IT MAKES IT TO JAKES CORNER. WENT
TO SHOWING 10 TRIED TO HIKE UP TO
TALAS BUT TOMORRE ICE & SNOW HAD
LUNCH LEFT FOR WASH. GOT HOME AT 630

1 SAND POST NO 2 CLIN

2 SAND 47m N DOWN LN

69 m CROSSED OLD
QUIET LN.

3 SAND 60m.

330 m N LYNX
CL LN. SMALL CRK
1' FEET WIDE
RUNNING
WATER

2 SAND TAKEN
IN CRK.

70m WEST TO RD FROM
POST #1 70m WEST
THIS POINT IS 40m S
OF EXCAVATION (LYNX SHOWING)
LYNX SHOWING IS 70m
TOTAL EXPOSURE 50m OF
WHICH HAS KNOWN MINE SEPAR.

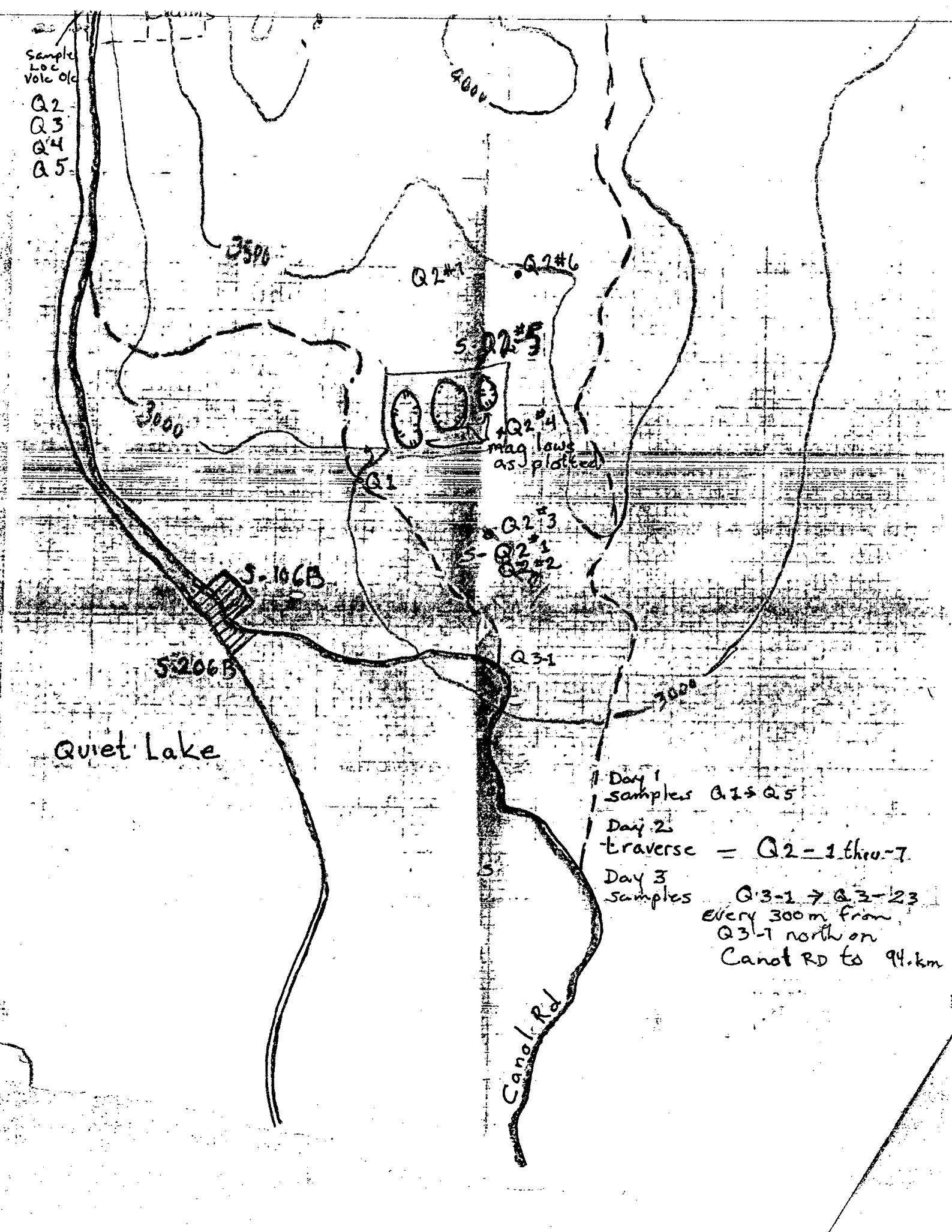
Sample
Loc
Volc Old

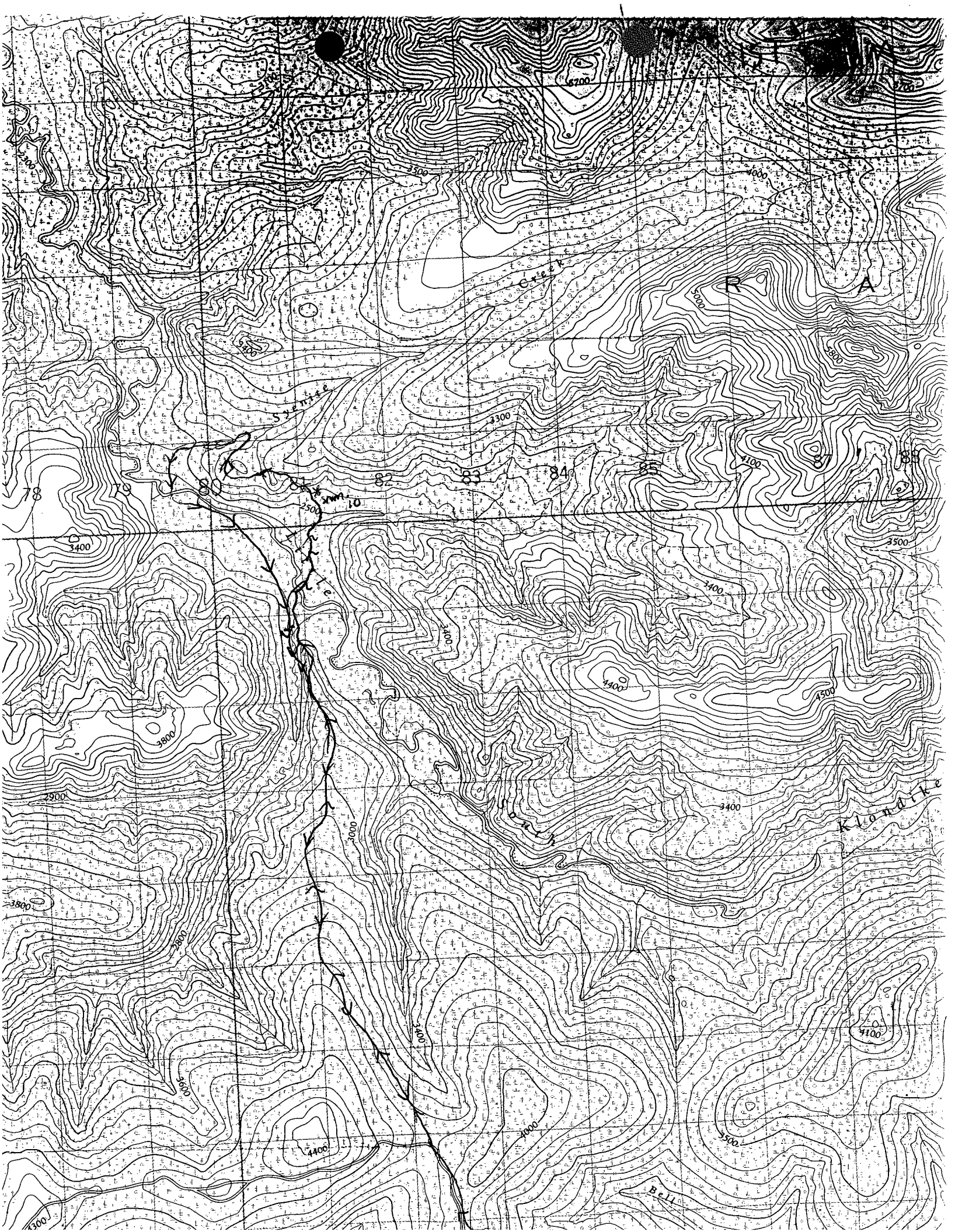
Q2
Q3
Q4
Q5

Quiet Lake

Canal Rd

Day 1
samples Q1 to Q5
Day 2
traverse = Q2-1 thru-7
Day 3
samples Q3-1 to Q3-23
every 300m from
Q3-1 north on
Canal Rd to 94km

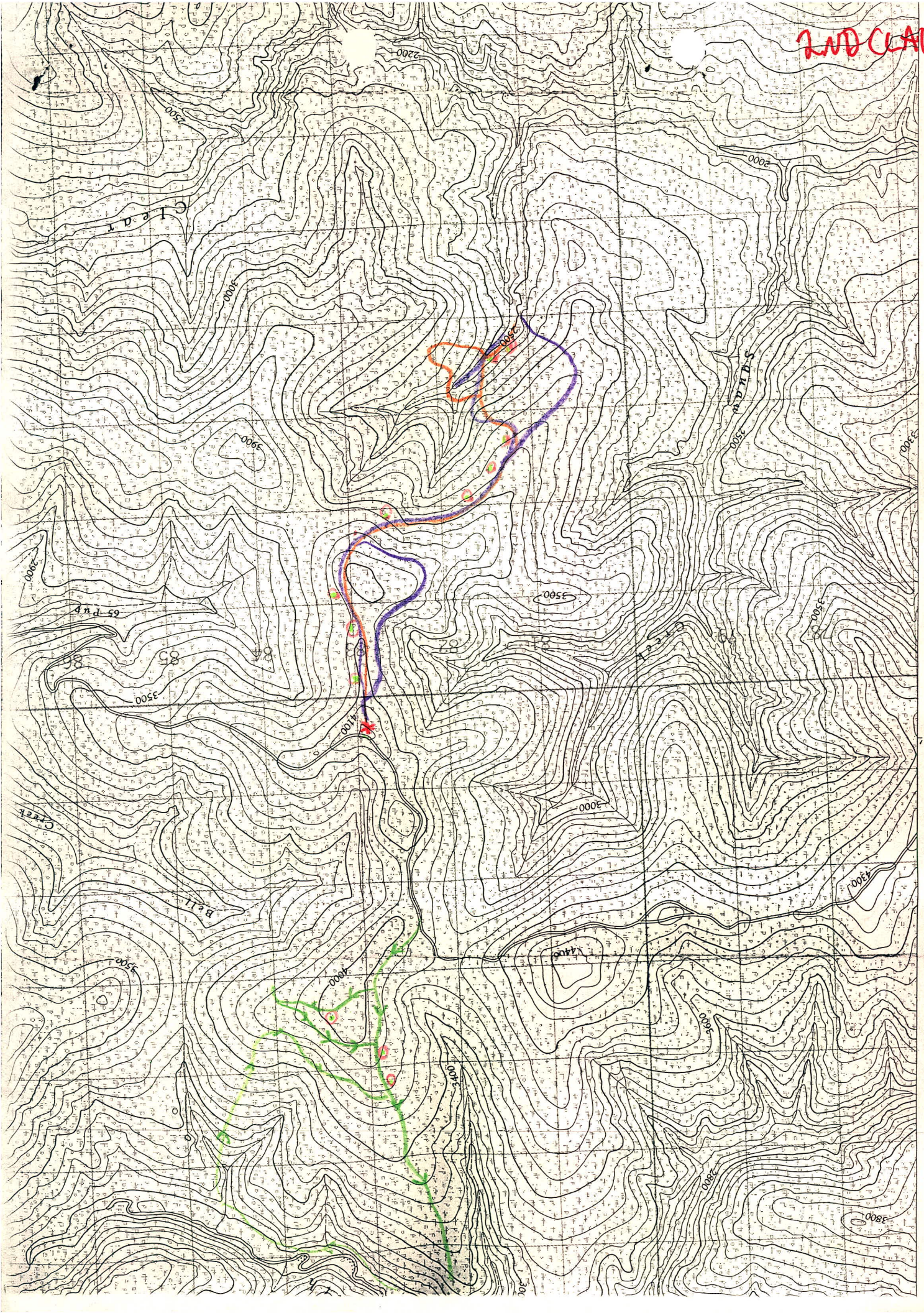




2ND CLAIM

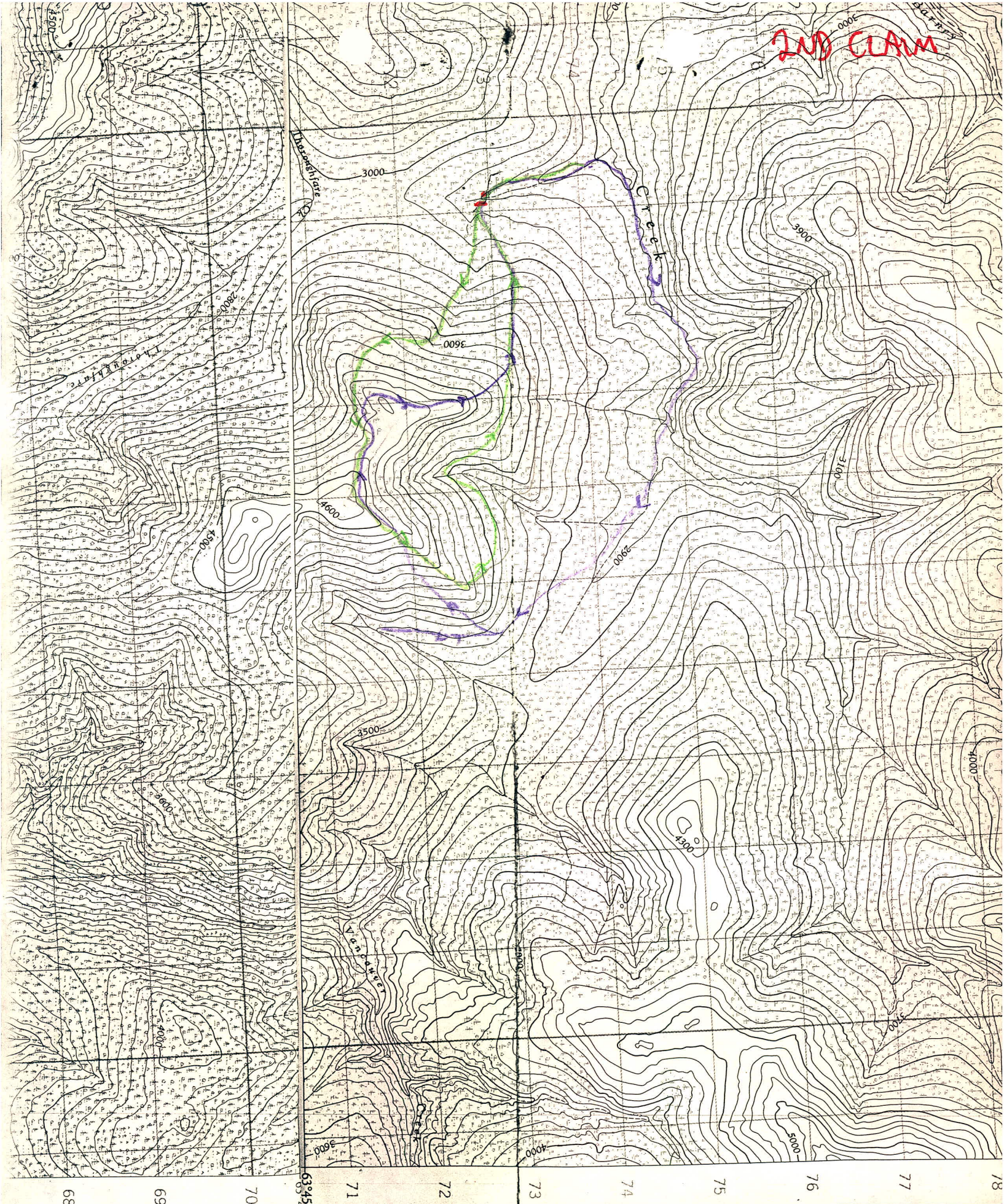
TOPO MAP N15P/14 CLEAR CRK TRAVERSE JULY 29 JULY 30 JULY 31
CAMP LOCATION *
SAMP LOCATIONS

73
74
75
76
77
78
79
80
81
82
83
84
85
86



— N —>

2ND CLAM



TOPO MAPS 115P11 MCQUESTEN
 115P14 CLEAR CRK
 TRAVERSE AUG 8 ——— TRAVERSE AUG 9
 SAMP. ●

