

Summary Report  
YMIP Application #94-076 Mr. Lee Olynyk

**(A) Project Location:**

A block of seven placer claims occupying 3500 lineal feet of Upper Last Chance Creek was the location of the evaluation project. The claims, plotted on claimsheet 115 O 14G, are:

Lyle	P34160
Pak Wan 2 - 5	P 34156 - 59
Lee	P 35827
Wanlee	P 35828

These claims are situated in the Dawson Mining District and are accessible by 2 wheel drive vehicle, 20 minutes from Dawson City.

**(B) Program:**

A Yukon company, 2001 Yukon Ltd. was contracted to drill 1170 Ft of Hex - core auger footage. A Mobile model B31 continuous auger drill mounted on a RN 110 Nodwell tracked carrier was employed. Total depth drilled and recovered with a 6 in diameter auger was 385 ft. The remaining 785 ft were drilled with 8 in flyts. Drilling on the property commenced on the 11th of August 1994 and was completed on the 24th of September. A total of five lines were drilled, comprising a total of 35 holes. The average depth per hole was 33.4 feet. A minimum of six feet of bedrock was taken in each hole to ensure total sample value capture. Samples were concentrated on site in a long tom, bagged, tagged and transported to camp for further concentration by hand panning. Panned samples were weighed and evaluated.

**(C) Drill Sample Evaluation:**

Of the 35 holes sampled 17 were gold bearing. Samples were weighed to the accuracy of one milligram (mg) and ranged from one to 135 milligrams of gold per hole. Calculating the surface area of the bedrock stratigraphic section ( $A = \pi r^2$ ) as a percentage of a square yard of bedrock, and overlaying the gold values expressed in troy ounces, values were given to each hole. ie. an 8 inch hole (7.75 in actual diameter) containing a 10 mgs of gold calculates to represent a value of .009 oz/sq yd.

With the possible exception of line 5 a definite paystreak for the targeted claimblock was identified. Grades established range from 0.01 oz / sq yd of bedrock surface area to 0.16 oz / sq yd. If a person was to assume a sluice section depth of 5 ft then the grade would be expressed as ranging from .006 oz / cubic yd to 0.096 oz / cubic yd. When averaging the "pay streak" holes (14 in total) values average 0.022 oz / sq yd of bedrock. Again, assuming a 5 ft sluice section values may be expressed as .0126 oz / cu yd of material. Assuming a gold price of \$525 Cnd and an average fineness of .700 these results can be expressed as having an average grade of \$4.63 per cubic yard.

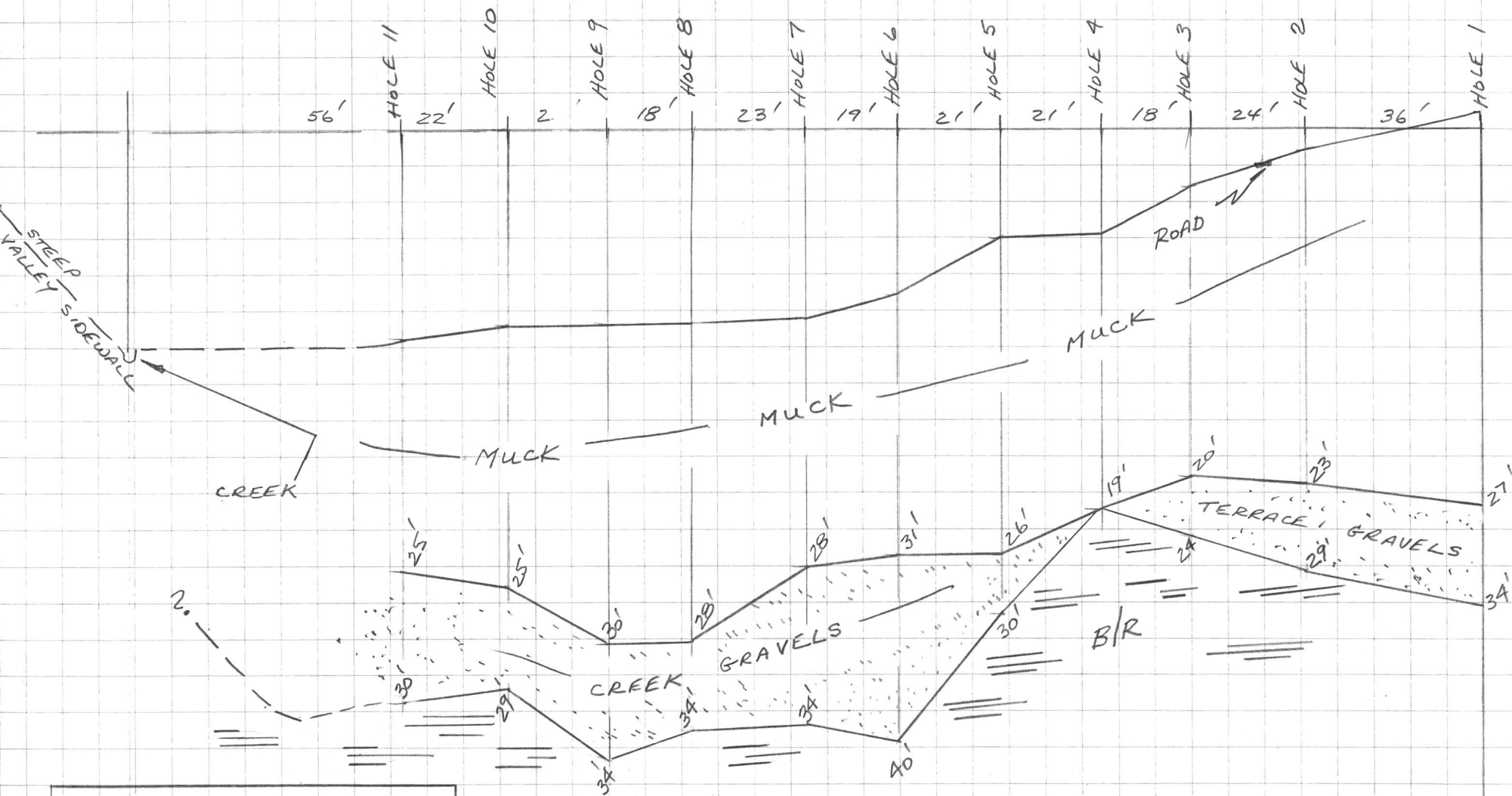
**(D) Recommendations:**

Based on the current gold price it is recommended that the claimblock be put into production. Prior to launching an expensive stripping program it is recommended that additional holes be put down to more accurately define the side limits of the paystreak thereby eliminating unnecessary material handling costs.



LAST CHANCE CR.

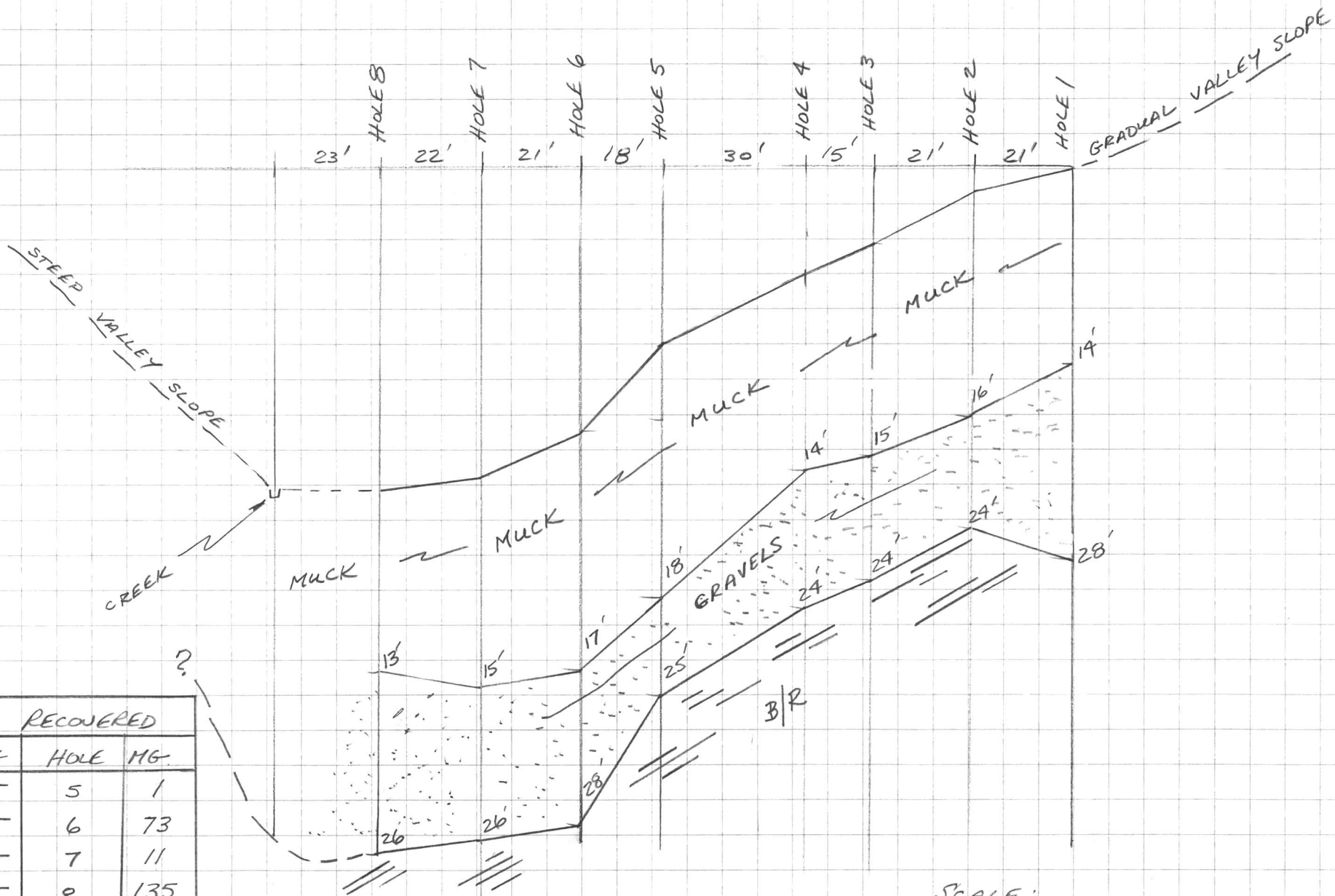
LINE 94-1 (81' UPSTR OF POST 1 P35827; P2 P35780)  
 (X-SECT LOOKING UPSTR)



GOLD RECOVERED			
HOLE	MG.	HOLE	MG.
1	—	7	20
2	—	8	17
3	3	9	7
4	—	10	—
5	2	11	—
6	—		

SCALE  
 HORIZONTAL 1" = 30'  
 VERTICAL 1" = 10'

LAST CHANCE CR.  
LINE 94-2 (195' DOWNSTR OF POST 1 P35780)  
(X-SECTION LOOKING UPSTR)



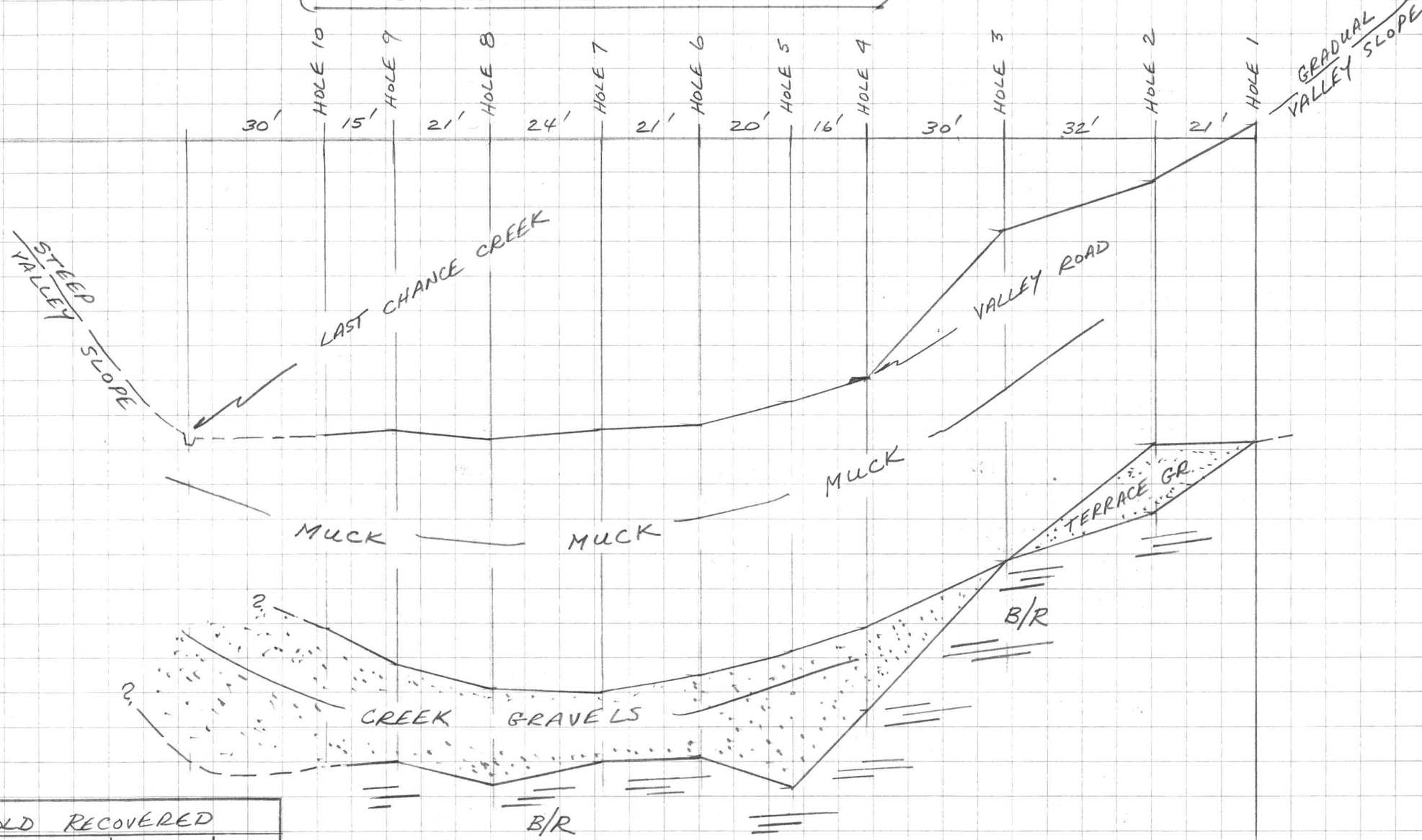
GOLD RECOVERED			
HOLE	MG	HOLE	MG
1	—	5	1
2	—	6	73
3	—	7	11
4	—	8	135

AUGER SIZE 8"

SCALE:  
HORIZONTAL 1" = 30'  
VERTICAL 1" = 10'

LAST CHANCE CR.

LINE 94-3 (120' DOWNSTR OF POST 2 P34158; POST 1 P34156)  
 (X-SECT LOOKING UPSTR.)



GOLD RECOVERED			
HOLE	MG.	HOLE	MG.
1	—	6	37
2	—	7	—
3	—	8	13
4	—	9	15
5	1	10	25

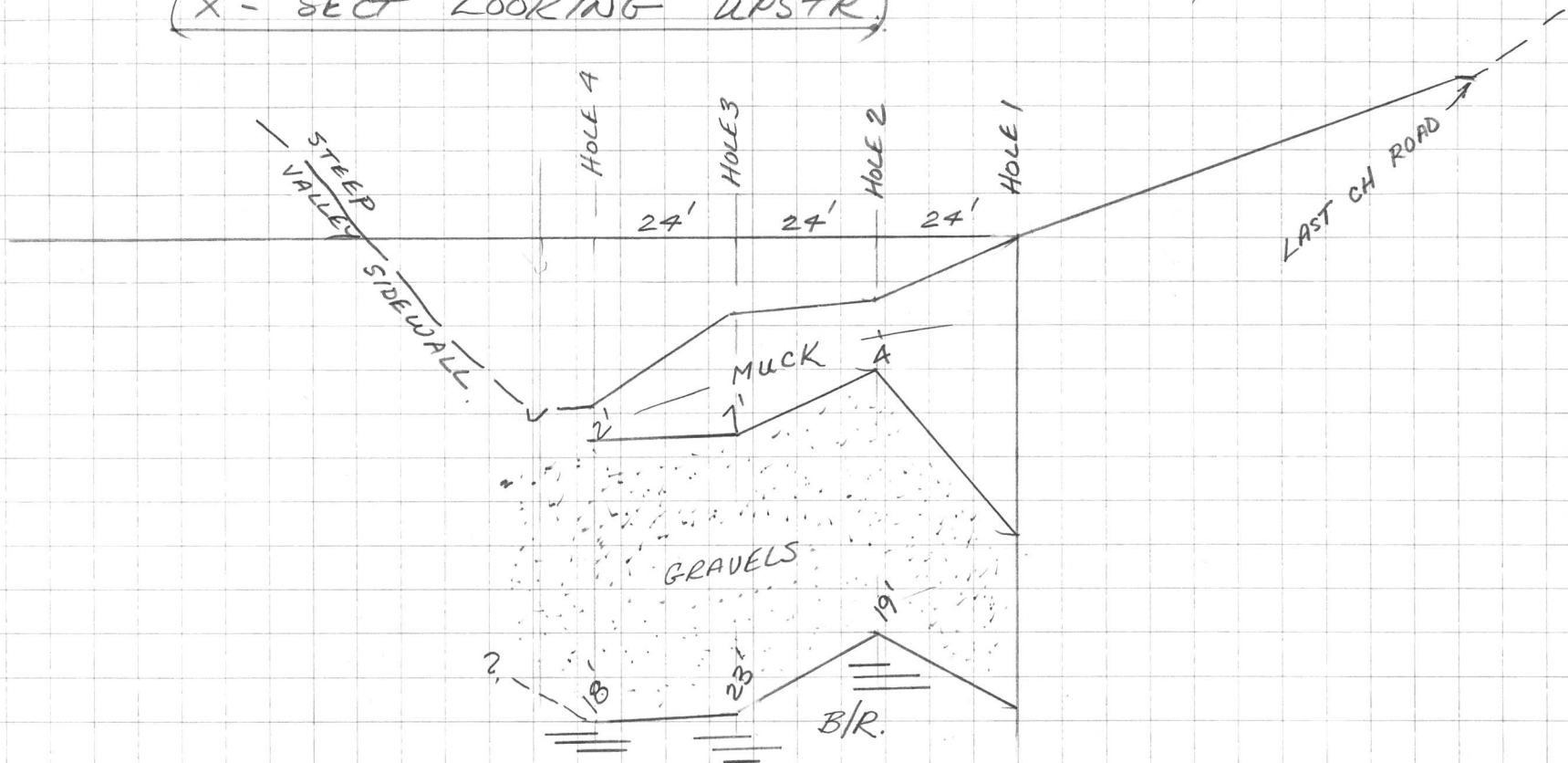
AUGER  
 SIZE 8"

SCALE  
 HORIZONTAL 1" = 30'  
 VERTICAL 1" = 10'

LAST CHANCE CR.

LINE 94-4 (DOWNSTR 120' OF POST 1 34158) (400' UPSTR OF 16A/D)

(X-SECT LOOKING UPSTR.)



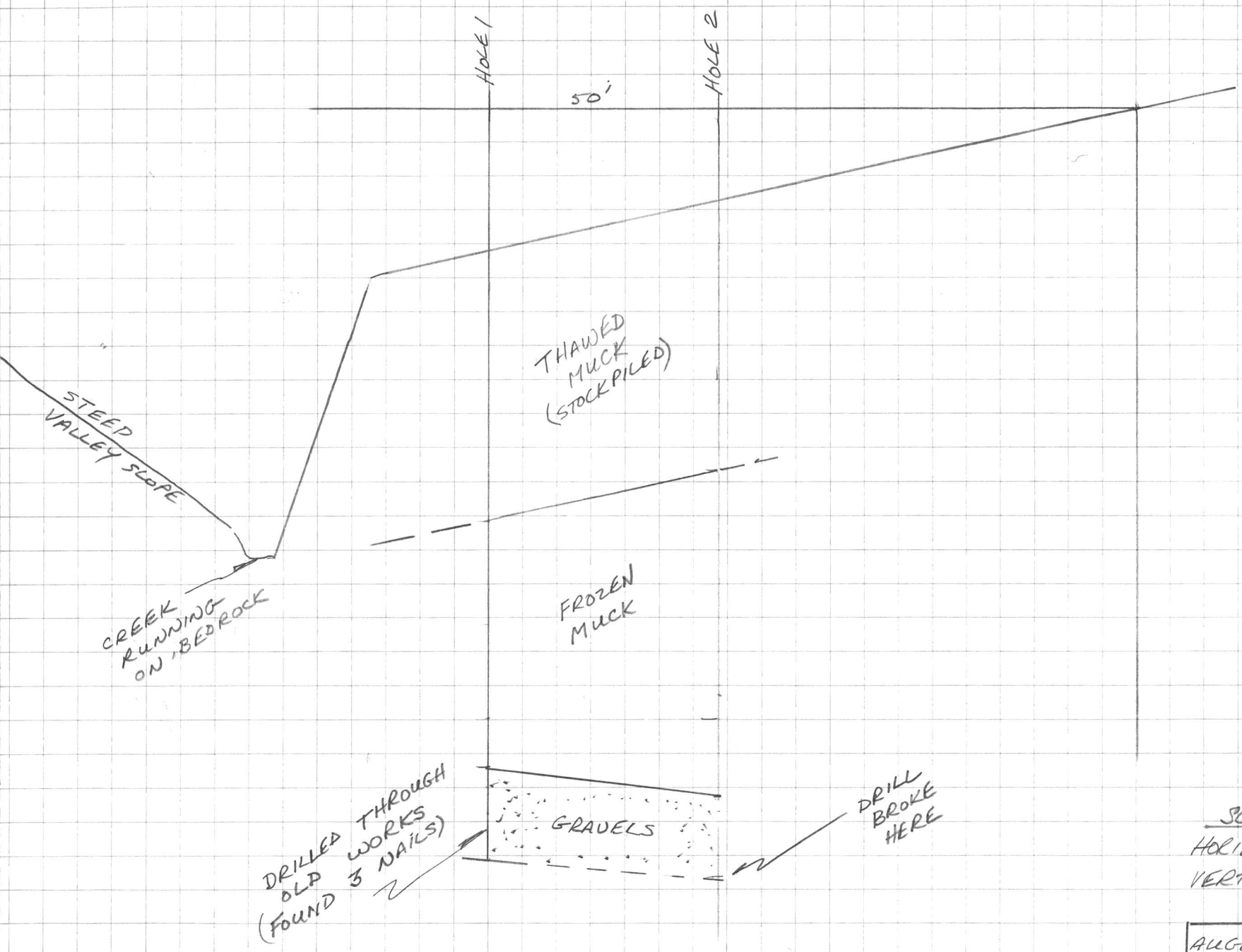
GOLD RECOVERED	
HOLE	MG.
1	12
2	21
3	6
4	—
AUGER SIZE 8"	

SCALE:

HORIZONTAL: 1" = 30'

VERTICAL: 1" = 10'

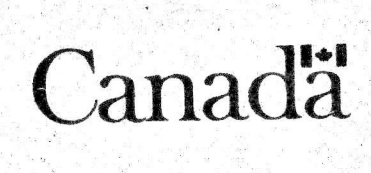
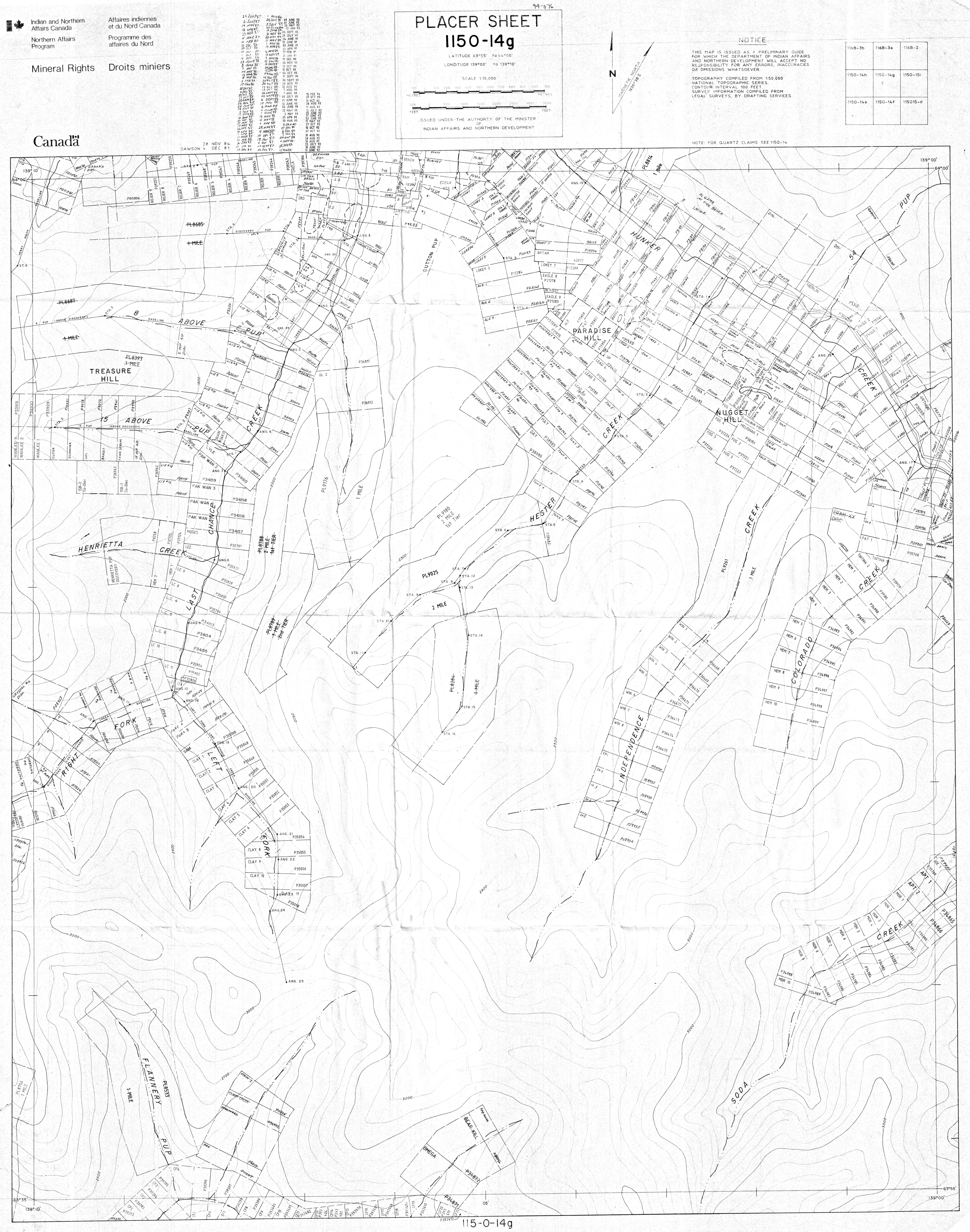
LAST CHANCE CR.  
LINE 94-5 IMMEDIATELY UPSTR OF 15AD/16AD BOUNDARY (50')  
X-SECTION LOOKING UPSTR.



SCALE  
HORIZONTAL: 1" = 30'  
VERTICAL: 1" = 10'

AUGER SIZE 8"

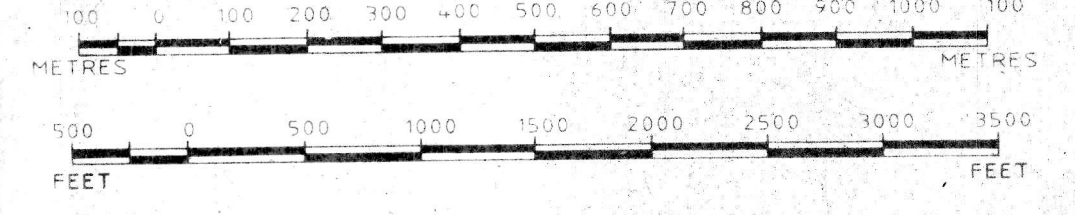




# PLACER SHEET 1150-14g

LATITUDE 63°55' to 64°00'  
LONGITUDE 139°00' to 139°10'

SCALE 1:10,000



ISSUED UNDER THE AUTHORITY OF THE MINISTER OF INDIAN AFFAIRS AND NORTHERN DEVELOPMENT

### NOTICE

THIS MAP IS ISSUED AS A PRELIMINARY GUIDE FOR WHICH THE DEPARTMENT OF INDIAN AFFAIRS AND NORTHERN DEVELOPMENT WILL ACCEPT NO RESPONSIBILITY FOR ANY ERRORS, INACCURACIES OR OMISSIONS WHATSOEVER.

TOPOGRAPHY COMPILED FROM 1:50,000 NATIONAL TOPOGRAPHIC SERIES.  
CONTOUR INTERVAL 100 FEET  
SURVEY INFORMATION COMPILED FROM LEGAL SURVEYS BY DRAFTING SERVICES.

1150-3b	1168-3a	1168-2
1150-14h	1150-14g	1150-15i
1150-14e	1150-14f	115015-d

DAWSON 28 NOV 84  
DEC 84

NOTE: FOR QUARTZ CLAIMS SEE 1150-14

