

SUMMARY REPORT
YMIP APPLICATION #96-048, OLTNYK, LAST CHANCE

(A) PROJECT LOCATION

THE PROJECT WAS LOCATED ON TWO DISTINCTLY SEPARATE TOPOGRAPHICAL AREAS. ONE IS DESCRIBED AS GUMBO HILL AND THE OTHER AS THE LEFT LIMIT BENCH IMMEDIATELY UPSTREAM OF TREASURE HILL.

BOTH LOCATIONS ARE IN THE LAST CHANCE CREEK DRAINAGE BASIN, TRIBUTARY TO HUNKER CREEK, TRIBUTARY TO THE KLONDIKE RIVER. BOTH PROJECTS ARE LOCATED ON CLAIMSHEET 115.0.149, IN THE DAWSON MINING DISTRICT.

GUMBO HILL IS SITUATED ON THE LEFT LIMIT OF LAST CHANCE CREEK, APPROXIMATELY 1000' DOWNSTREAM OF LEFT LIMIT TRIBUTARY 8 ABOVE DISCOVERY PUP. (REFERRED TO AS PROPERTY 'A')

THE AREA DESCRIBED AS THE LEFT LIMIT BENCH IMMEDIATELY UPSTREAM OF TREASURE HILL IS SITUATED APPROXIMATELY 1000' NORTH OF LEFT LIMIT TRIBUTARY 15 ABOVE DISCOVERY PUP. THE AREA EXPLORED PARALLELED 15 PUP FOR APPROXIMATELY 3500'. (REFERRED TO AS PROPERTY 'B')

(B) ACCESS

ACCESS TO PROPERTY 'A' CAN BE GAINED BY LEAVING THE LAST CHANCE CREEK ROAD APPROXIMATELY 500' DOWNSTREAM FROM 8 A/D PUP AT ITS INTERSECTION POINT WITH GUMBO HILL FOUR WHEEL DRIVE ROAD.

ACCESS CONTINUED

ACCESS TO PROPERTY 'B' IS GAINED BY DRIVING UPSTREAM IS A/D PUP FOUR WHEEL DRIVE ROAD APPROXIMATELY 400' TO ITS INTERSECTION POINT WITH THE ATV PROPERTY 'B' ROAD.

C) GEOLOGY

LAST CHANCE CREEK CONSISTS MAINLY OF CREEK GRAVELS OF 'COUNTRY ROCK' ORIGIN & SOME TYPICAL WHITE CHANNEL GRAVELS WHERE THE PRESENT CREEK COURSE HAS CUT THROUGH THE ANCIENT ELEVATED BODY OF WHITE CHANNEL ERA GRAVELS. THESE GRAVELS, SITUATED APPROXIMATELY 300' ABOVE THE CURRENT VALLEY BOTTOM, ARE TYPICALLY BROWN IN COLOUR EXCLUDING THE LOWER 6' SECTION WHICH ARE QUARTZ RICH AND WHITE IN COLOUR.

A MASSIVE BODY OF HIGHLY DECOMPOSED ANGULAR GRAVELS WERE FOUND UPSLOPE OF THE HYDRAULIC CUT ON GUMBO HILL AND APPEARED TO BE OUTSIDE OF THE RECOGNIZED LIMITS OF LAST CHANCE CREEK SOURCE. THE DRILL PROGRAM ATTEMPTED TO PROVE SOURCE (LAST CHANCE OR 8 A/D PUP) AND ESTABLISH VALUES.

BEDROCK IS TYPICALLY BLACK CARBONACEOUS SCHIST BUT IN SOME LOCATIONS APPEARS TO BE OVERLAIN WITH A REDDY, CRUMBLER BEDROCK WITH GRAVELS SOMETIME SEPARATING THE TWO LAYERS. ON BOTH HILLS, ONCE COMPETENT BEDROCK WAS LOCATED, WAS PREDOMINANTLY BLACK.

D) WORK ACCOMPLISHED

PROPERTY A (GUMBO HILL)

WITH A DB H CATERPILLAR DOZER, 1900' OF DRILL GRID LINE WAS ESTABLISHED AND 39 DRILL PADS WERE LEVELLED. ADDITIONALLY, THE DB H OPENED UP 250' OF ABANDONED HYDRAULIC CUT FACE INTO BEDROCK FOR AN AVERAGE DEPTH OF 8'.

WITH A MOBILE MODEL B31 CONTINUOUS AUGER DRILL, MOUNTED ON A RN 110 TRACKED CARRIER, 39 HOLES FOR A TOTAL OF 802' WERE DRILLED. EIGHT INCH FLYIGHTS WERE EMPLOYED TO MAXIMIZE SAMPLING ACCURACY. (IN CONTRAST TO 6")

A TOTAL OF SEVEN LINES WERE DRILLED. FIVE WERE DRILLED IN A DIRECTION PERPENDICULAR TO LAST CHANCE CR. DIRECTION IN AN EFFORT TO DETERMINE ITS CHANNEL BOUNDARIES (AND ECONOMIC BOUNDARIES)

TWO LINES WERE DRILLED PERPENDICULAR TO B A/D PUP DIRECTION TO DETERMINE WHETHER THE UPSLOPE GRAVELS WERE FROM AN B A/D PUP SOURCE, IN CONTRAST TO LAST CHANCE SOURCE.

DRILL HOLES AVERAGED 20.5' IN DEPTH AND INCLUDED A MINIMUM OF 5' OF BEDROCK. OCCASSIONALLY ADDITIONAL BEDROCK WAS DRILLED IN ORDER TO ABSOLUTELY DETERMINE MATERIAL TYPE AND TO CALIBRATE OTHER HOLES.

PROPERTY B (UPSTP. OF TREASURE HILL)

APPROXIMATELY 1.45 KM OF TRAIL AND DRILL/TRENCH GRID LINES WAS CONSTRUCTED WITH A DBH CATERPILLAR DOZER.

THIRTEEN TRENCHES AVERAGING 15' WIDE X 6' DEEP X 50' IN LENGTH WERE EXCAVATED IN ORDER TO LOCATE THE PRECURSOR OF THE LAST CHANCE CHANNEL. TRENCHES WERE DUG A MINIMUM OF 5' INTO BEDROCK.

IN ADDITION TO THE TRENCHES, FOUR DRILL HOLES FOR A TOTAL OF 252' WERE DRILLED. THEIR PURPOSE WAS TO DISPROVE THE EXISTENCE OF A SECOND BEDROCK LEVEL OR BURIED CHANNEL.

SAMPLING PROPERTY A. & B.

TRENCHES WERE SAMPLED OVER THE ENTIRE VERTICAL SECTION OF BOTH SIDEWALLS. ONE CUBIC FOOT SAMPLES WERE TAKEN FROM EACH TRENCH.

DRILL HOLE CUTTINGS FROM TOP TO BOTTOM WERE PROCESSED.

SAMPLES WERE LABELLED AND TRANSPORTED TO THE CREEK WHERE THEY WERE CONCENTRATED IN A LONGTOM. LONGTOMMED SAMPLES WERE FURTHER CONCENTRATED BY PANNING. PANNED SAMPLES WERE DRIED, FINISH CLEANED, DRIED, WEIGHED AND EVALUATED.

E) SAMPLE EVALUATION

SAMPLES TAKEN ALONG THE FACE OF ANY TRENCH WERE TAKEN ALONG AN 8" COLUMN SO AS TO REFLECT EQUIVALENT BEDROCK AREA VALUES AS A DRILL HOLE. SAMPLES WERE WEIGHED TO THE ACCURACY OF ONE MILLIGRAM AND RANGED FROM ONE TO 68 MILLIGRAMS. TO DETERMINE VALUES PER CUBIC SLUICE YARD THE SURFACE AREA OF THE SAMPLE WAS FIRST CALCULATED.

SURFACE AREA OF THE SAMPLE WAS CALCULATED AS $AREA = \pi \text{ RADIUS SQUARED}$

$$\text{ie. } (3.14 \times 3.875 \times 3.875) = 47.150 \text{ SQUARE INCHES.} \\ \text{OR } 0.03638 \text{ SQUARE YARDS.}$$

TO CALCULATE THE VALUE OF A MILLIGRAM OF GOLD A PRICE OF \$500⁰⁰ CANADIAN WAS ASSUMED; AS WELL AS A PROVEN FINENESS OF 700.

$$\text{VALUE OF 1 MILLIGRAM OF GOLD} = \frac{1}{31,100} \times \$500 \times 700 \\ = \$0.01125$$

VALUE OF GOLD CONTAINED ON ONE SURFACE YARD OF BEDROCK PER MILLIGRAM

$$= \frac{\$0.01125}{0.03638} \\ = \$0.31$$

$$\text{EXAMPLE: VALUE OF A 20 MG HOLE} = \frac{20 \times \$0.01125}{0.03638} \\ \text{(PER SURFACE YARD OF BEDROCK)} \\ = \$6.18$$

VALUE PER CUBIC YARD OF BEDROCK IF ONE ASSUMES A 5' SLUICE SECTION

$$= \frac{\$6.18 \times 3'}{5'} \\ = \$3.71$$

F) RESULTS & RECOMMENDATIONS

PROPERTY 'A'

DRILL HOLES REVEALED TWO CHANNELS CUT INTO BEDROCK TRAVELLING IN THE DIRECTION OF LAST CHANCE CREEK. IT IS BELIEVED THAT THESE ARE BACK CHANNELS OR MEANDERS OF THE ANCIENT LAST CHANCE CR. IN BOTH CASES WHERE THE CHANNEL WAS DEEP, GOLD VALUES WERE ENHANCED.

BASED ON HOLES WITH RECOVERY GREATER THAN 10 MILLIGRAMS A POTENTIAL PAYSTREAK WAS SUPERIMPOSED ON THE DRILL GRID MAP (SEE 'PAYSTREAK' MAP). AN AREA OF 3500 SQUARE YARDS OF BEDROCK WAS SHOWN TO CONTAIN VALUES AVERAGING 16.66 MG. OR A VALUE OF \$5.16 (\$3.10 PER SLUICE YARD ASSUMING A 5' SECTION.)

RECENT STUDIES CONCERNING THE RECOVERY RATES OF AUGER DRILLS HAVE SHOWN RATES OF 50% RECOVERY AVERAGE (AS PROVEN BY BULK TESTING & MINING) (HAKONSON, 60 MILE, 1996) ASSUMING THIS TO BE THE CASE, VALUES OF THE SECTION WOULD DOUBLE.

BASED ON THE ABOVE IT IS RECOMMENDED THAT THE DELINEATED AREA BE SELECTIVELY MINED. IT IS FURTHER RECOMMENDED THAT THE AREA BETWEEN THE PAYSTREAK OUTLINED AND THE POND (SEE PAYSTREAK MAP) BE FURTHER TESTED TO POTENTIALLY ENLARGEN THE DEPOSIT.

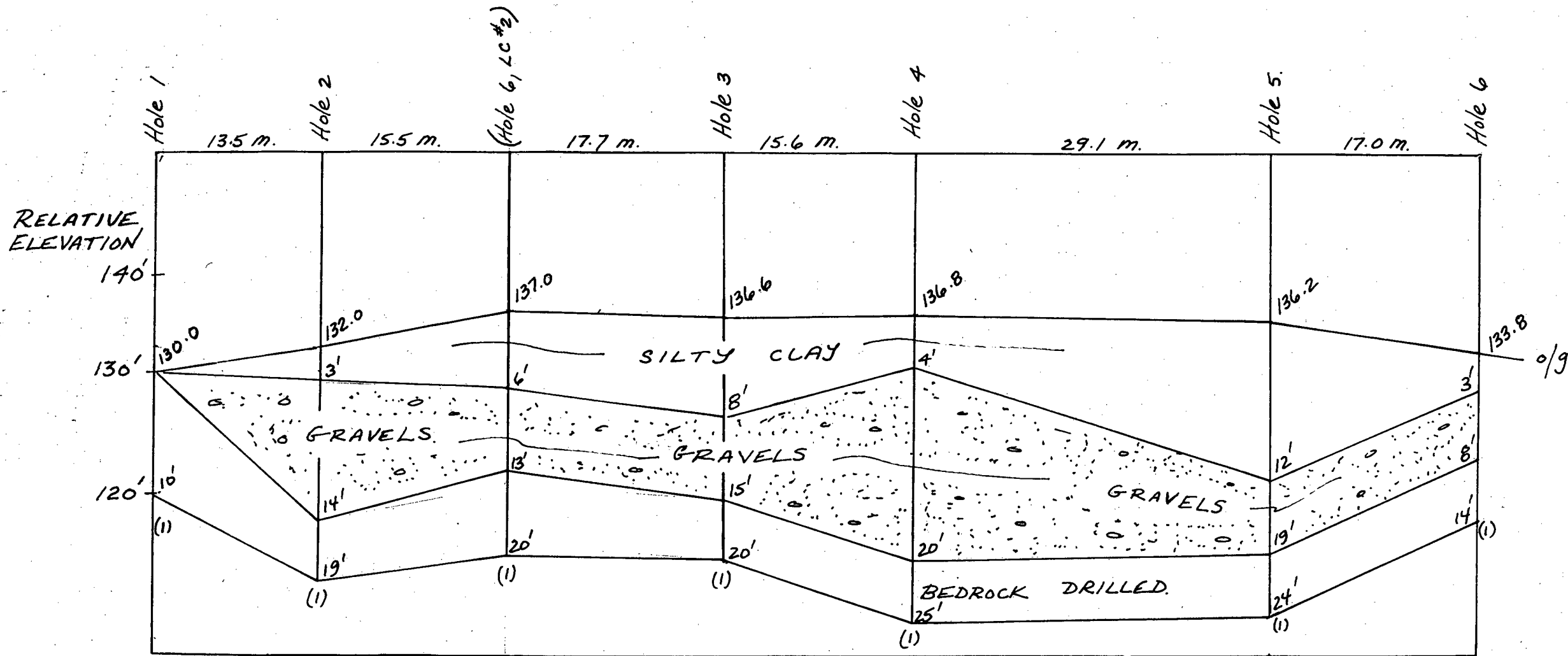
PROPERTY 'B'

NOT A SINGLE TRACE OF GOLD WAS FOUND IN EITHER OF THE TRENCHES OR DRILL HOLES. IT IS SUPPOSED THAT ANY PRECURSOR OF THE ANCIENT LAST CHANCE CHANNEL WAS ERODED BY IS ABOVE DISCOVERY PUP.

NO FURTHER EXPLORATION WORK IS RECOMMENDED.

WRITTEN: L.A. OLYNYK FEB 1997

LINE GUM #1
 GUMBO HILL - LAST CHANCE CR.
 CROSS SECTION LOOKING UPSTREAM & PUP DIRECTION.

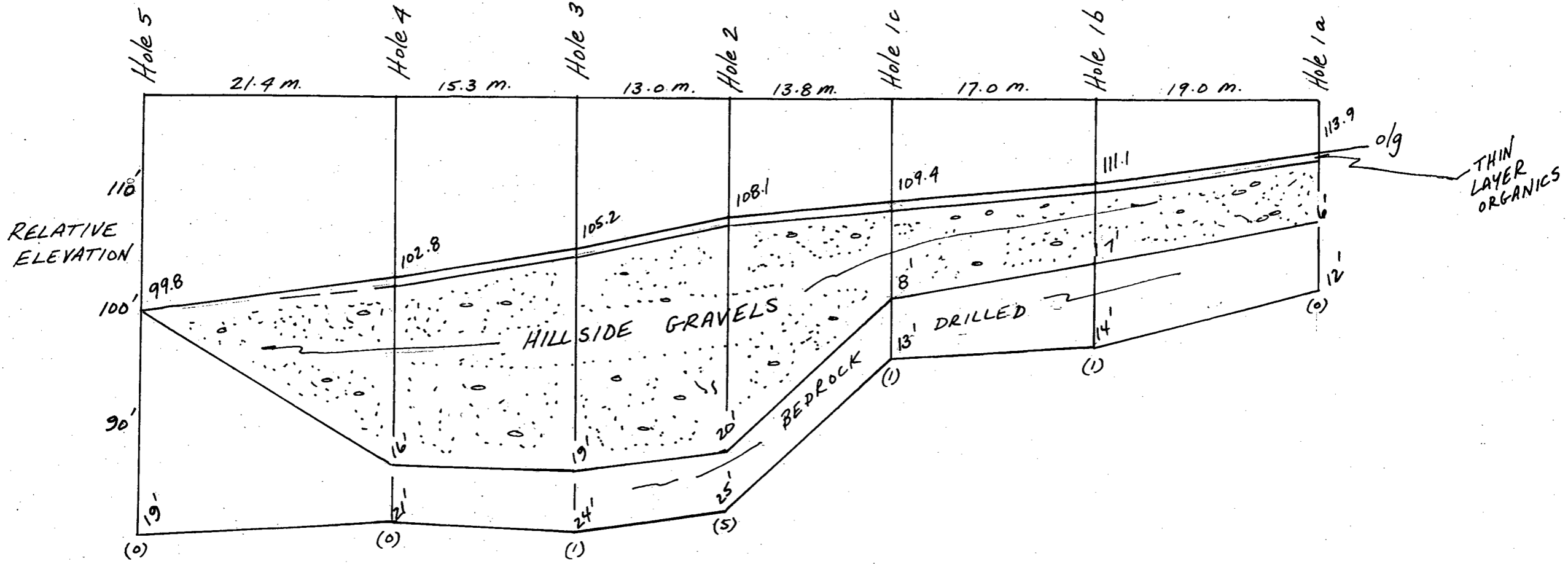


SCALE
 HORIZONTAL 1" = 10 metres (1 square per unit)
 VERTICAL 1" = 10 feet (" " " ")

AUGER SIZE 7.75" average
 GOLD RECOVERED: expressed in milligrams ie (1)

115 0 14 g
 GUMBO HILL
 LAST CHANCE CREEK
 DRILLED SEPT/OCT 1996
 DRAWN BY LEE OLYNYK

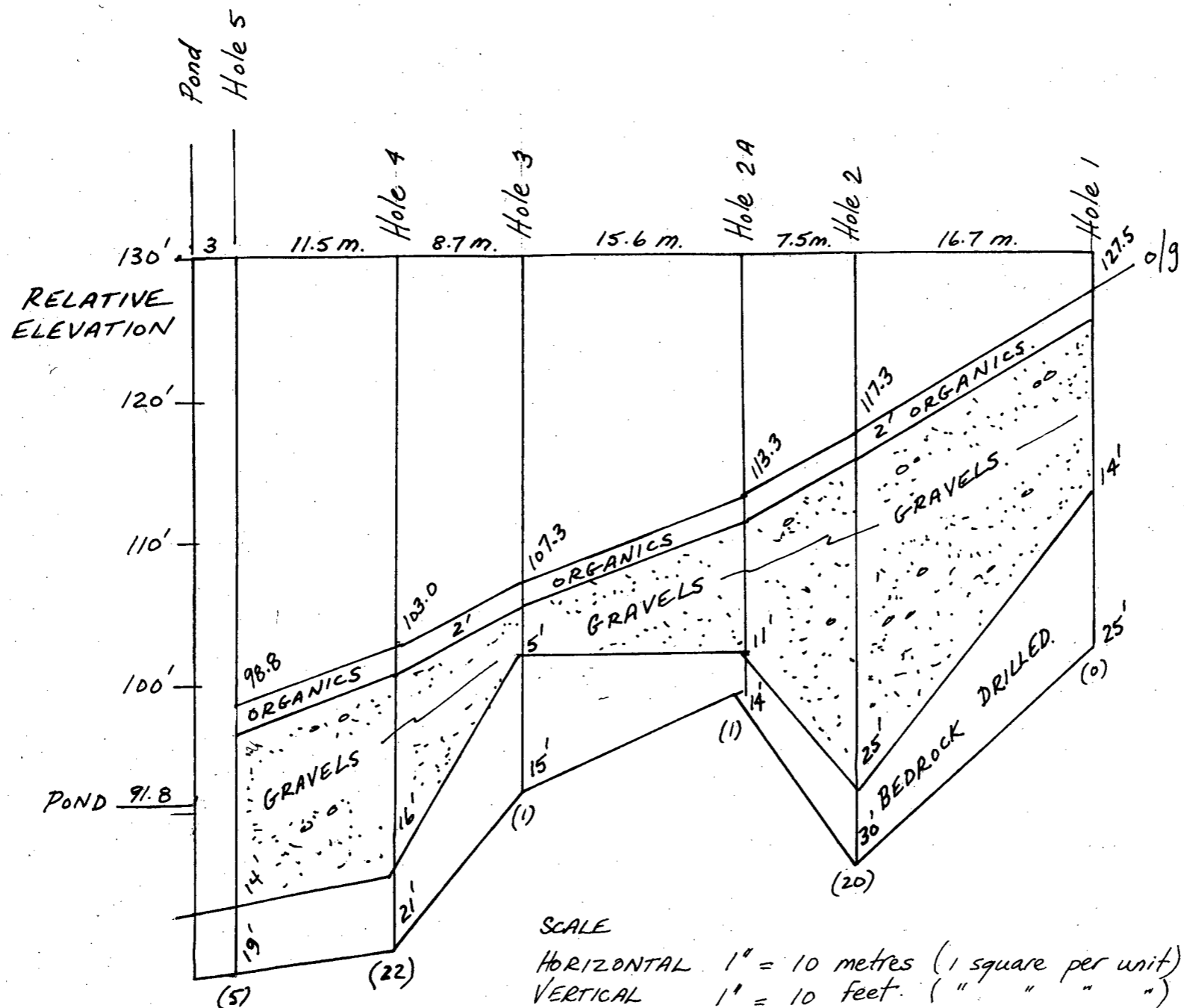
LINE - GUM #2
 GUMBO HILL - LAST CHANCE CR.
 CROSS SECTION LOOKING UPSTREAM 8 PUP DIRECTION.



SCALE:
 HORIZONTAL 1" = 10 metres (1 square per unit)
 VERTICAL 1" = 10 feet (" " " ")
 AUGER SIZE 7.75" DIA. AVERAGE
 GOLD VALUES RECOVERED: expressed in milligrams ie (5)

115 0 14 g.
 GUMBO HILL
 LAST CHANCE CREEK
 DRILLED: SEPT/OCT 1996
 DRAWN BY: LEE OLYNYK

LINE L.C #1
GUMBO HILL - LAST CHANCE CR.
CROSS SECTION LOOKING UPSTREAM LAST CHANCE CR. DIRECTION.



GOLD RECOVERED Expressed in milligrams re. (20)

SCALE
HORIZONTAL 1" = 10 metres (1 square per unit)
VERTICAL 1" = 10 feet (" " " " "
AUGER SIZE 7.75" AVERAGE

115 0 14 g.
GUMBO HILL
LAST CHANCE CREEK

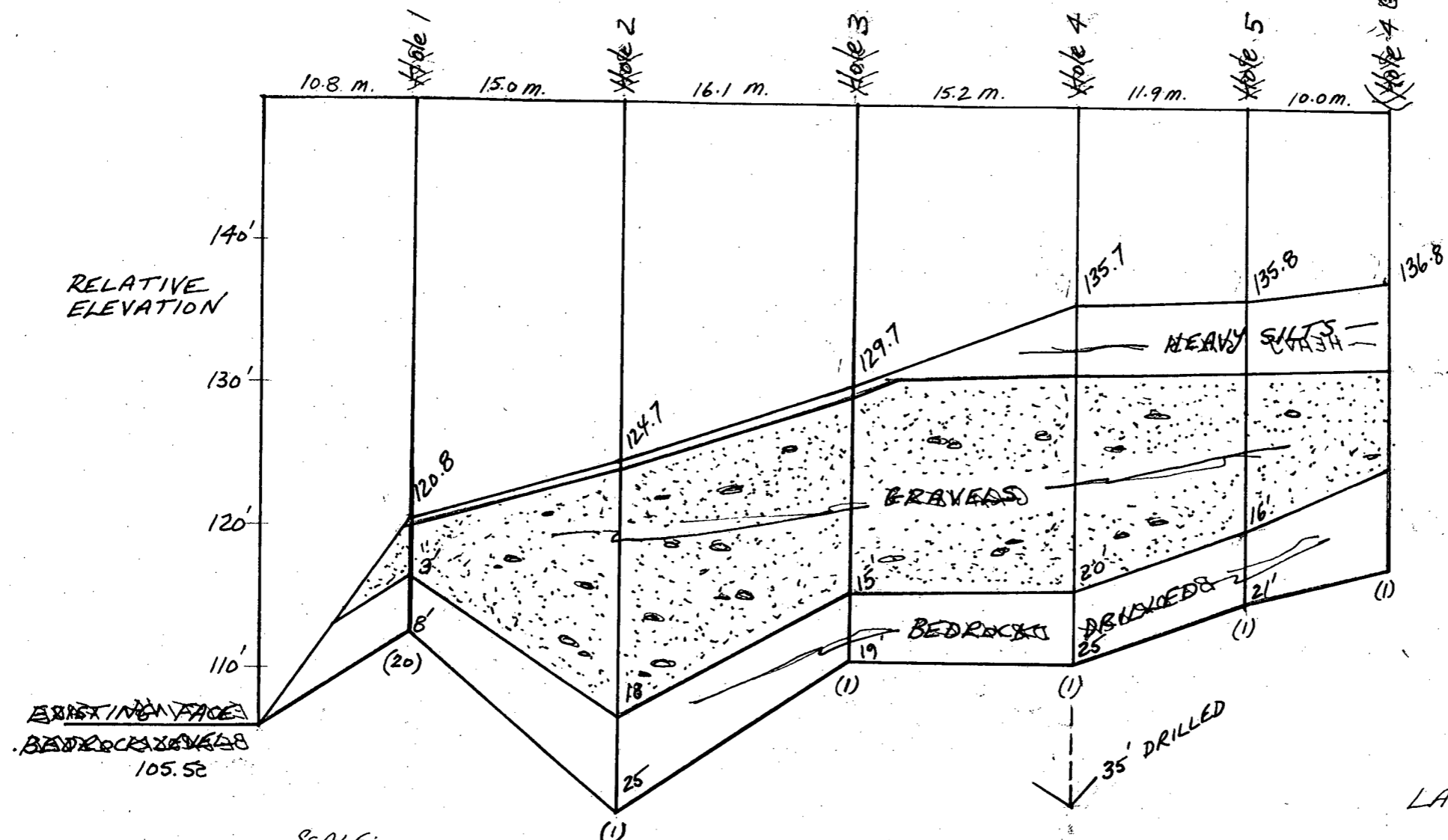
DRILLED: SEPT/OCT 1996
DRAWN BY: LEE OLYNYK

LINE L.C #3

GUMBO HILL - LAST CHANCE CR.

CROSS SECTION LOOKING EAST ALONG LAST CHANCE CR. DIRECTION

HOLE 4 (GUMBO HILL)



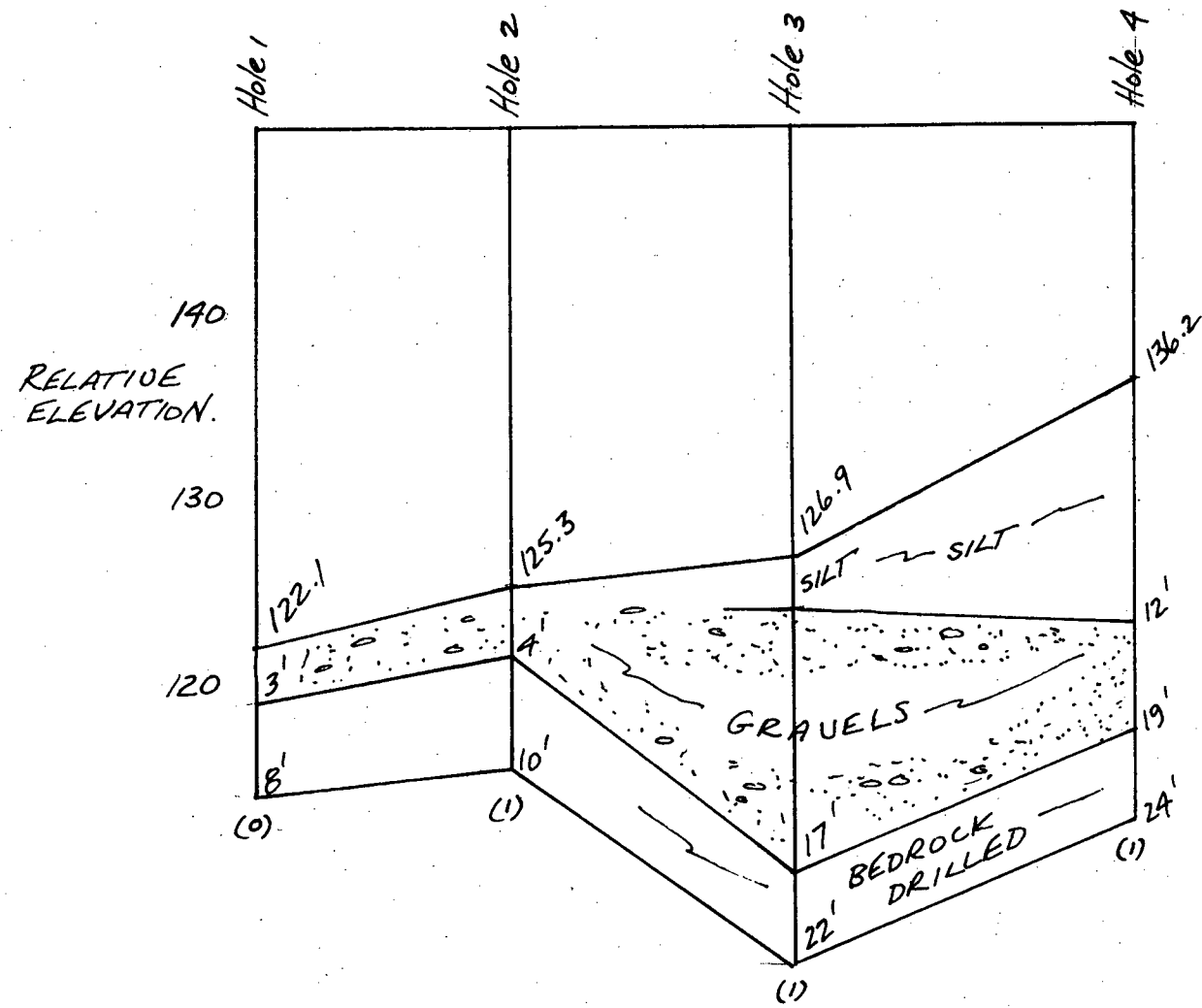
SCALE:

HORIZONTAL 1" = 10 metres (1 square per unit)
VERTICAL 1" = 10 feet (1 square per unit)

AUGER SIZE: 7.75" average
GOLD RECOVERED: expressed in milligrams. 18 (20)

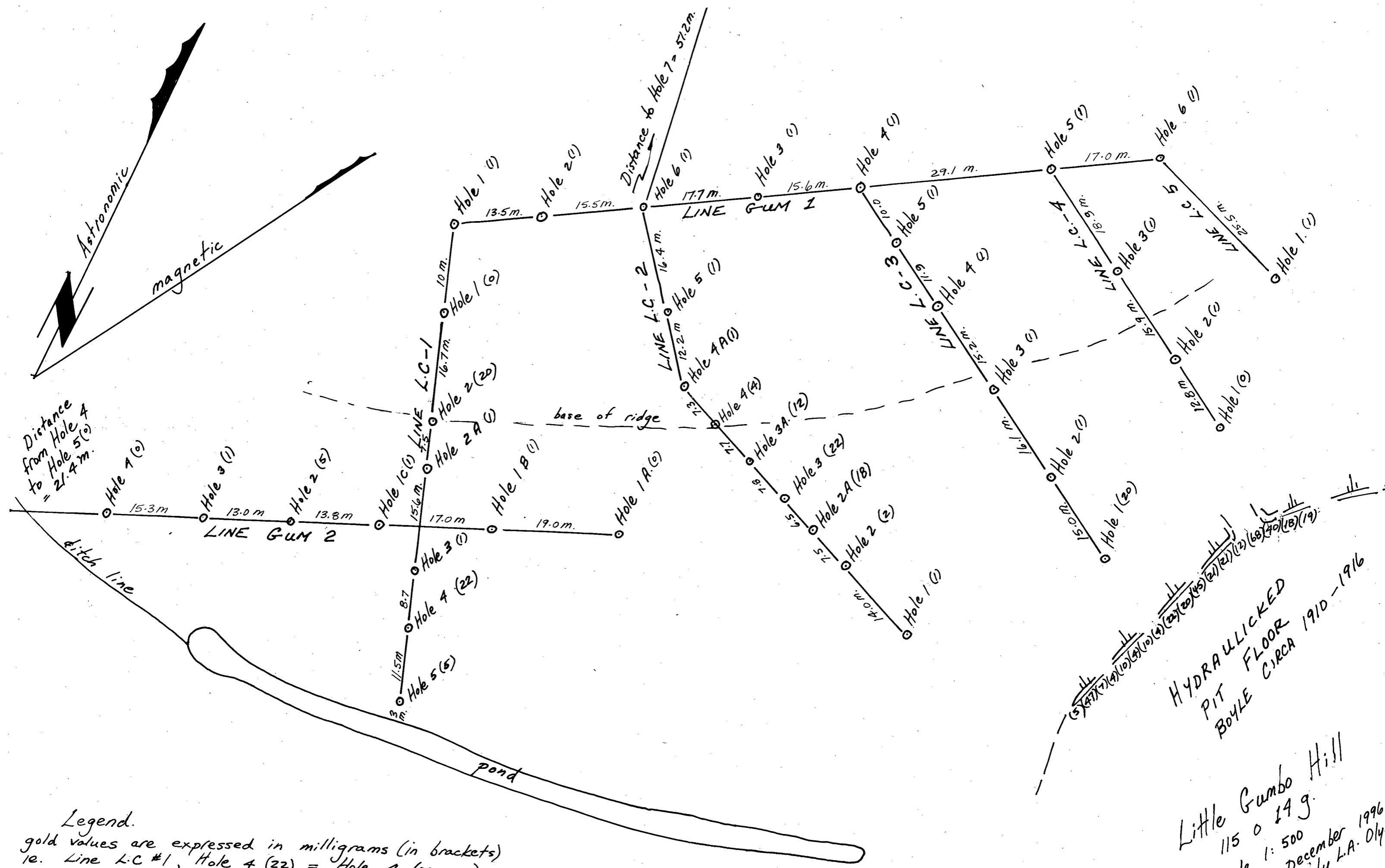
115 o 14 g.
GUMBO HILL
LAST CHANCE CR.
DRILLED SEPT/OCT 1996
DRAWN BY LEE OLYNYK

LINE - L.C # 4
 GUMBO HILL - LAST CHANCE CR.
 CROSS SECTION LOOKING UPSTREAM LAST CHANCE CR. DIRECTION



SCALE.
 HORIZONTAL 1" = 10 metres (1 square per unit)
 VERTICAL 1" = 10 feet (1 square per unit)
 AUGER SIZE: 7.75" average
 GOLD RECOVERED: expressed in milligrams ie. (0)

115 o 14 g
 GUMBO HILL
 LAST CHANCE CREEK
 DRILLED SEPT/OCT 1996.
 DRAWN BY. LEE OLYNYK



Distance from Hole 4 to Hole 5 (0) = 21.4 m.

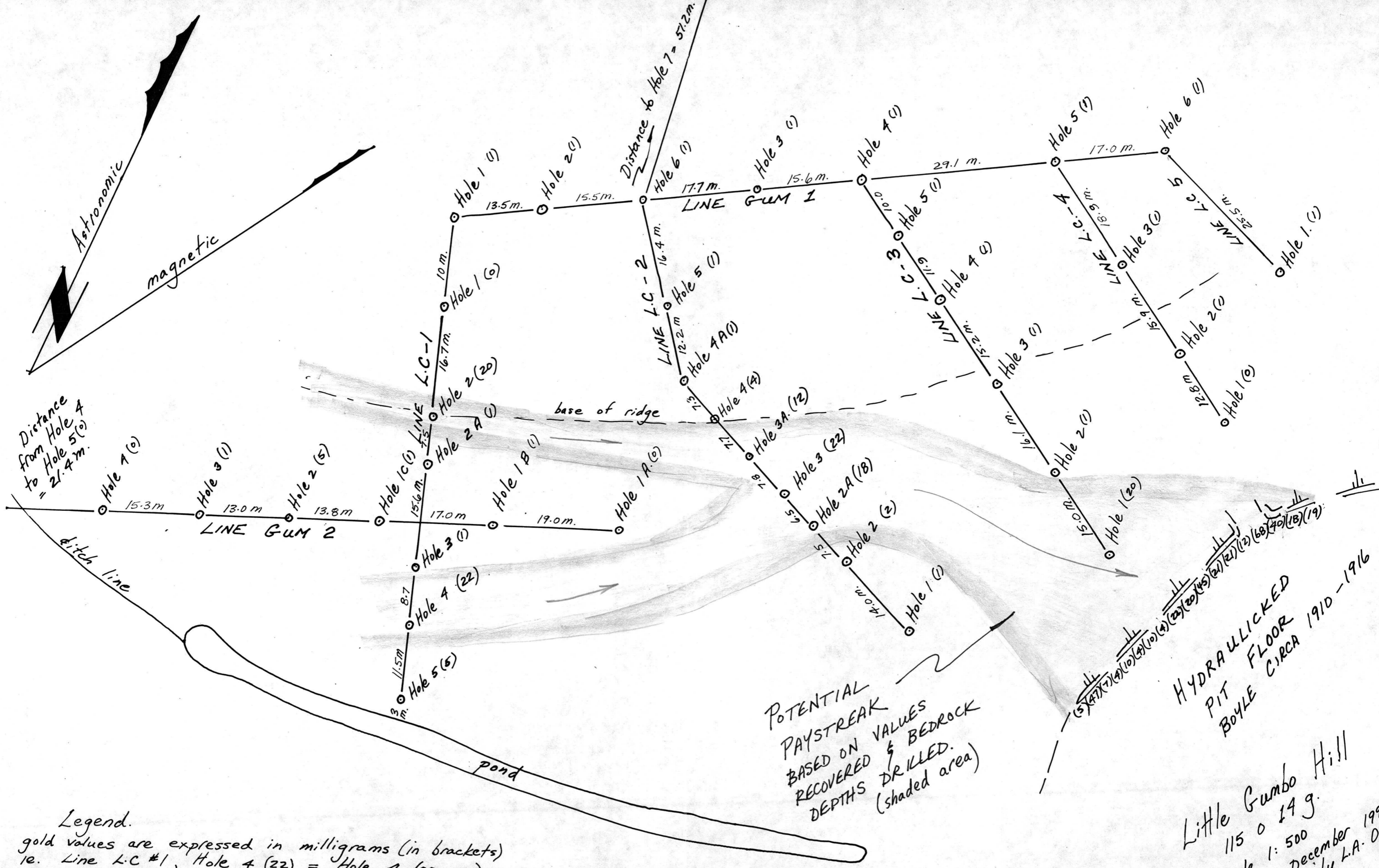
Distance to Hole 7 = 57.2 m.

Legend.

gold values are expressed in milligrams (in brackets)
 ie. Line L.C. #1, Hole 4 (22) = Hole 4 (22 mg.)
 All work done on P.C. Liz #5 P22104

HYDRAULICKED
 PIT FLOOR
 BOYLE CIRCA 1910-1916

Little Gumbo Hill
 115 0 14 g.
 Scale 1: 500
 21 December 1996
 drawn by L.A. Oly

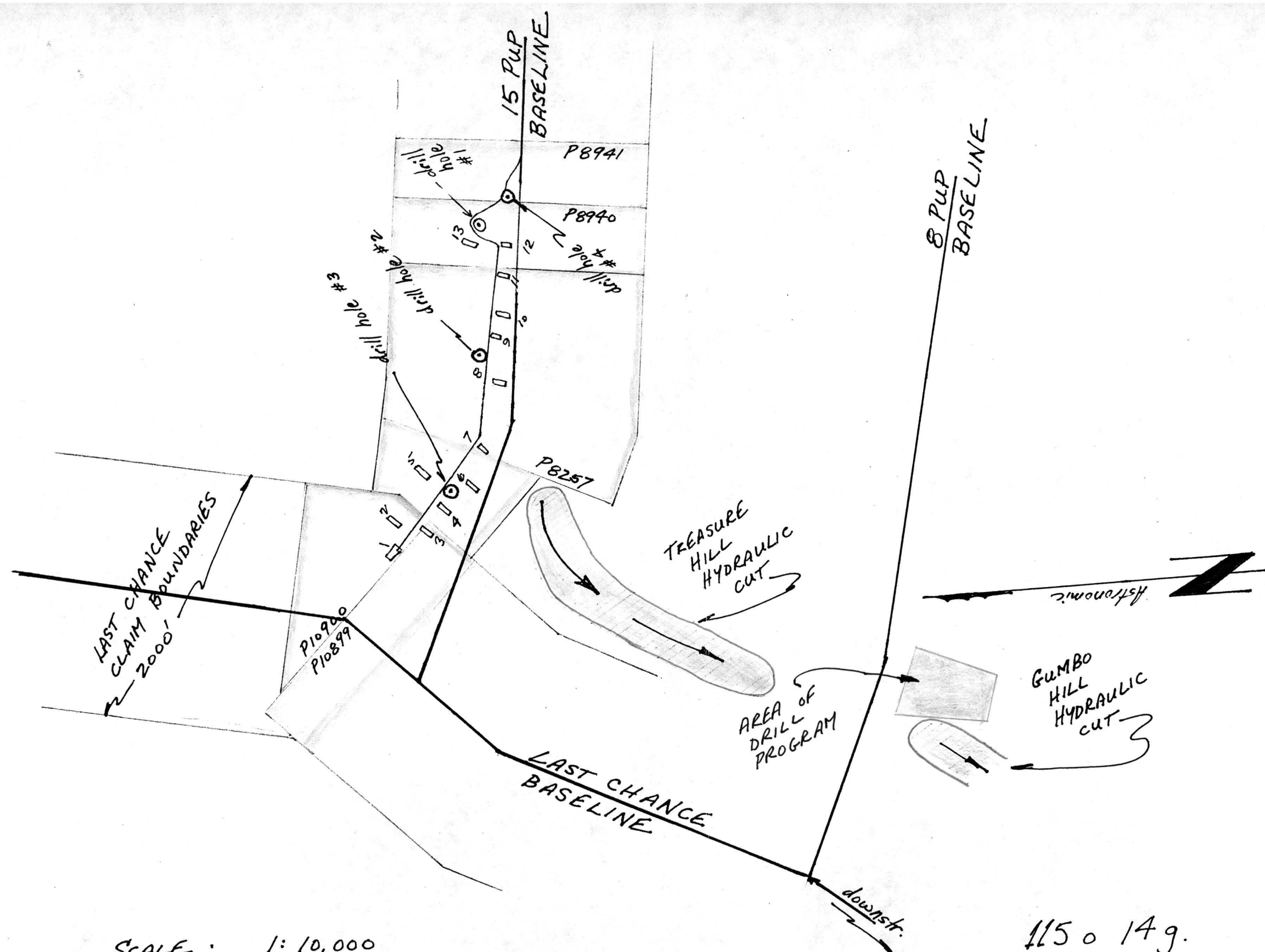


Legend.
 gold values are expressed in milligrams (in brackets)
 ie. Line L.C #1, Hole 4 (22) = Hole 4 (22 mg.)
 All work done on P.C. Liz #5 P22104

POTENTIAL
 PAYSTREAK
 BASED ON VALUES
 RECOVERED & BEDROCK
 DEPTHS
 (shaded area)

HYDRAULICKED
 PIT FLOOR
 BOYLE CIRCA 1910-1916

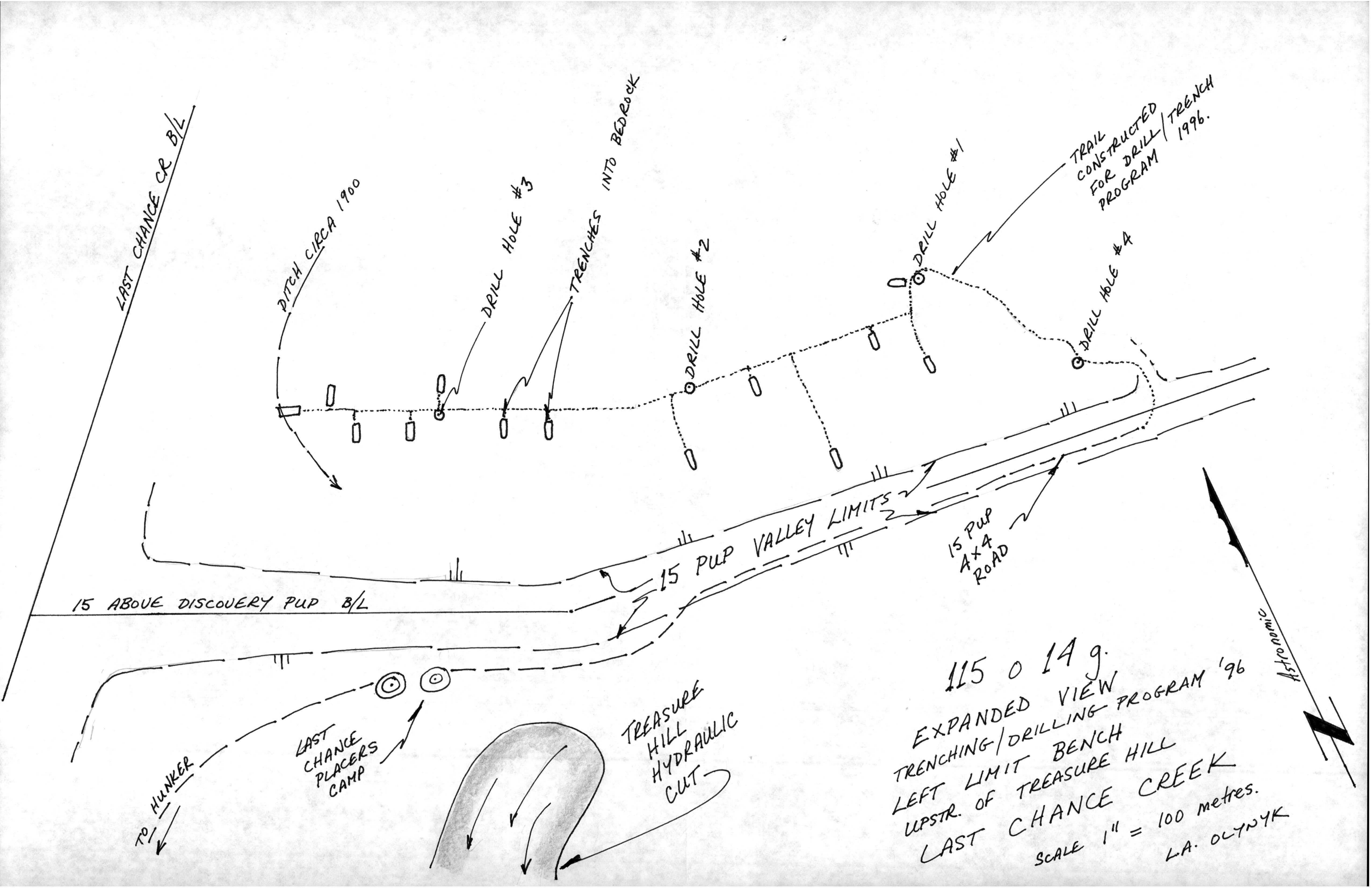
Little Gumbo Hill
 115 0 14 g.
 Scale 1: 500
 21 December 1996
 drawn by L.A. Oly



SCALE : 1:10,000
(833' = 1 INCH)

- 13 TRENCHES 15' x 6' DEEP x 50' IN LENGTH □
- 4 DRILL HOLES (7.75" AV. DIAMETER) ⊙
- HOLE #1 0-65' BLACK CARBONACEOUS SCHIST
- HOLE #2 0-65' DECOMPOSED GRAY SCHIST.
- HOLE #3 0-10' BROWN, GRAY BEDROCK; 10-78' CARBONACEOUS SCHIST.
- HOLE #4 0-3' SILT; 3-20' GRAY B/R; 20-44' BLK CARBONACEOUS SCHIST.

1150 14g.
TRENCHING/DRILLING
LEFT LIMIT BENCH
UPSTR OF TREASURE HILL
LAST CHANCE CREEK



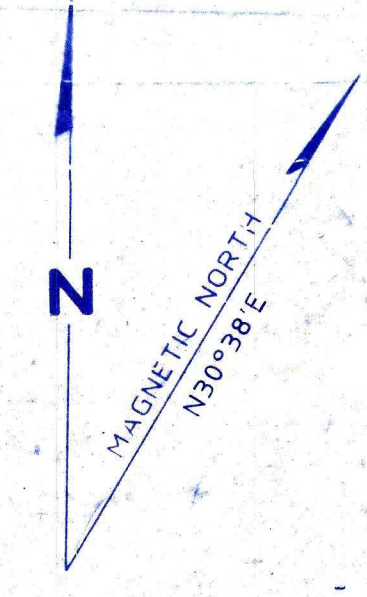
PLACER SHEET 1150-14g

LATITUDE 63°55' 10 64°00'
 LONGITUDE 139°00' 10 139°10'

SCALE 1:10,000



ISSUED UNDER THE AUTHORITY OF THE MINISTER OF INDIAN AFFAIRS AND NORTHERN DEVELOPMENT



NOTICE

THIS MAP IS ISSUED AS A PRELIMINARY GUIDE FOR WHICH THE DEPARTMENT OF INDIAN AFFAIRS AND NORTHERN DEVELOPMENT WILL ACCEPT NO RESPONSIBILITY FOR ANY ERRORS, INACCURACIES OR OMISSIONS WHATSOEVER.

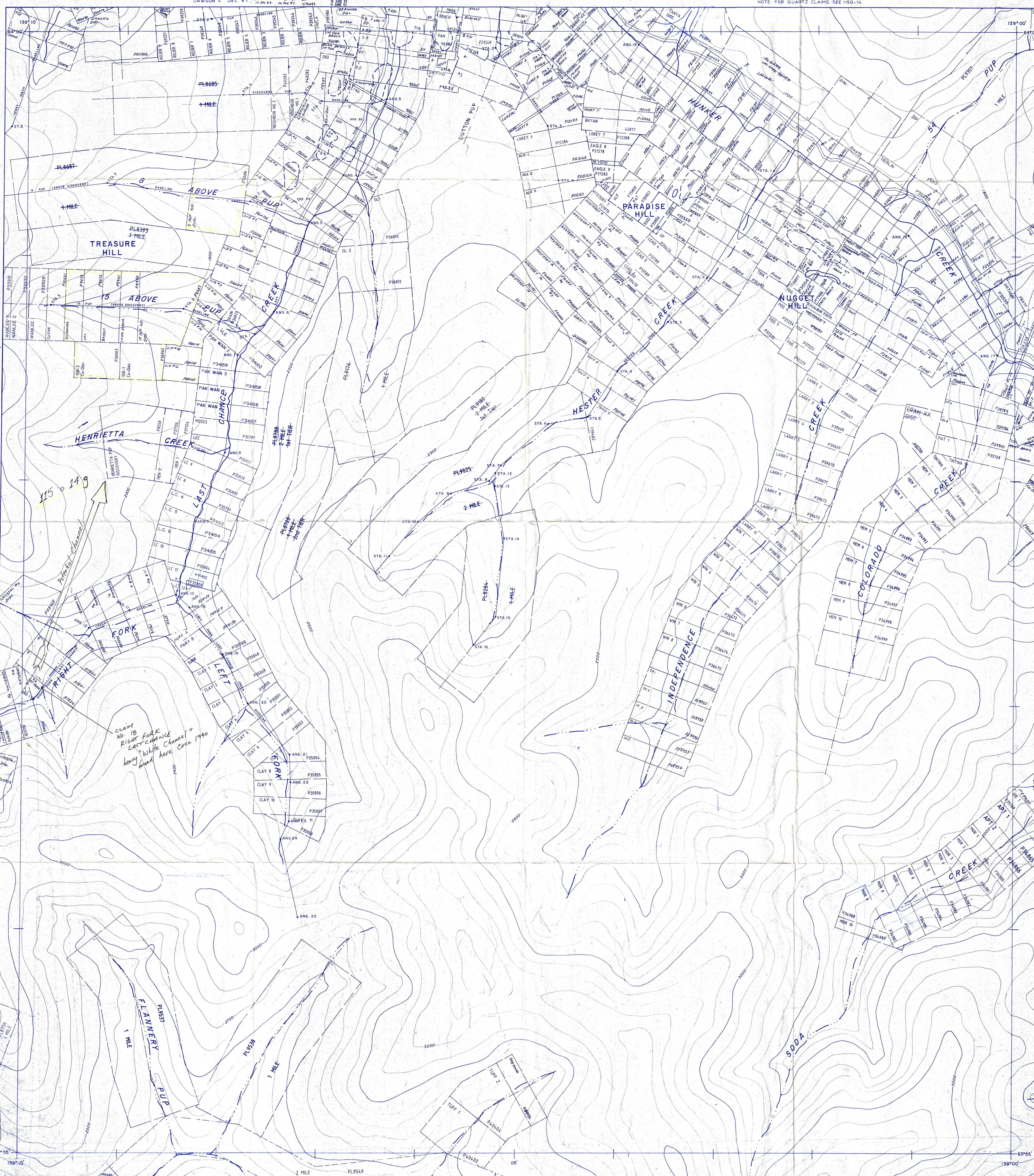
TOPOGRAPHY COMPILED FROM 1:50,000 NATIONAL TOPOGRAPHIC SERIES.
 CONTOUR INTERVAL 100 FEET.
 SURVEY INFORMATION COMPILED FROM LEGAL SURVEYS BY DRAFTING SERVICES.

1150-3b	1168-3a	1168-2
1150-14h	1150-14g	1150-15i
1150-14e	1150-14f	115015-d



DAWSON 28 NOV 84
 DEC 81

NOTE: FOR QUARTZ CLAIMS SEE 1150-14



115-0-14g

CLAIM NO. 18
 RIGHT FORK
 LAST CHANCE
 known "White Channel"
 found here circa 1940