

98-046

YUKON ENERGY MINES  
& RESOURCES LIBRARY  
P.O. Box 2703  
Whitehorse, Yukon Y1A 2C8

TEN MILE - SIXTY MILE PROSPECT

Location-Claim map- 1150/12

63:30 - 140:00

ACCESS- Ten Mile Creek can be accessed in high water by boat. In low water it can be accessed from the Yukon River overland 13 miles to Ten Mile Creek. Also accessable by airplane to ~~LA~~mmers airstrip at the mouth of Ten Mile.

SUMMARY - After years of looking for the source os the Ten Mile silver and gold showings, I have , in my mind reached a conclusion as to the main source. Placer gold and trace minerals, mainly garnet and black magnetite were prospected and followed fromthe Ten Mile area to the mouth and down the Yukon River 4 -5 miles. No gold or trace minerals in any amount were found upstream on the Yukon River from the mouth of the Sixty Mile River. Prospect shafts were dug in several locations (map insert). Up to 100 fine flour gold colors were panned on a small island in front of the Sixty Mile mouth. The river was very low at this time. Gold values up to \$2.75 a yard were found on lower bedrock terraces down-stream from the mouth of Sixty Mile. What I thought was an old buried channel connecting Sixty Mile to the Sixty Mile Slough was prospected with a six foot deep shaft. Float gravel was on the surface in this area, but it did not go down from the surface. Frozen ground was encountered so I could not dig further. The prospect was approximately 3/4 of a mile from the Yukon River. The hole was filled back in

as trappers and other people use this trail . It appears to be faulted and had a small mag. reading. Garnets found in ~~powd~~ samples from the prospect areas have the same shist like characteristics as the garnets from Ten Mile. Skarn type contacts were searched for along the Yukon River but none were found. My opinion is that this gold and trace minerals come out of the Sixty Mile drainage from the Ten Mile area. Out flow from the Pre Reid Glaciation ~~th~~<sup>A</sup> came out of the Stewart River to the Indian River , likely filled up the Sixty Mile River Valley and went as far as 13 Mile Creek, and up 2-3 miles in Ten Mile Creek. ~~I~~<sup>T</sup> could have possibly gone up Sestak Creek and around, down to Ten Mile. When this receded it transferred some of the gold from Ten Mile down Sixty Mile to the Yukon River .

A vein of light brown drizzly quartz -8 feet wide was prospected about 6 miles upstream from the mouth of the Sixty Mile River. It is located on a bluff approximately 200 feet from the Sixty Mile Valley floor in line with the Ten Mile fault. This vein would have to be showing on a cross fault which is a good place to prospect. This vein and several other smaller veins come up through a fractured Granite to Granite Gniess. Gold and Silver anomalies were found on the 8 foot wide vein and another area 1000 feet away , with some Jasper. Mr. Bostock assayed this 8 foot vein at .117 oz./ton, the highest found in the area.

(Bostock report insert) I believe this vein extended 2-3

miles up Ten Mile Creek at a higher level and contributed to the Ten Mile Creek gold and silver minerals. Pieces of rough quartz - up to 3 feet across are found on hillsides of the Ten Mile drainage area. This vein likely varies with gold values on strike and if drilled could contain more gold further down. Float and pieces of the vein itself were crushed and panned . A malleable silver oxidized metal was found, I believe it to be Silver Chloride.

Some Jasper was found in the same area as the 8 foot wide vein. When assayed this showed some gold and silver. In conclusion I feel this vein system could be mineralized for several miles at depth and is a good prospect for future development. In my years of prospecting and reading much of Bostock, he is usually right. He says the possibilities of more gold on strike is possible in this vein.

A four wheel A.T.V. and Jeep were rented for transport of people and supplies . A 11 foot inflatable boat was rented to travel shallow waters on the back sloughs of the Yukon River. Air travel was by Bonanza Aviation.

09/10/98

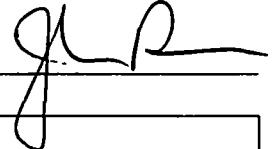
Certificate of Analysis

Page 1

Daniel Hermanutz

WO# 05621

Certified by



Sample #	Au ppb
r V-1	23
r V-2	5
r V-3	10
r V-4	<5
r V-5	<5
r V-6	<5
r V-7	24
r V-8	<5
ss40 RD-1	<5
ss S-1	35
ss S-2	7
ss S-3	<5
ss S-5	<5
ss S-6	<5
ss WSH	<5



# CERTIFICATE OF ANALYSIS

## iPL 98J1098

2036 Columbia Street  
 Vancouver, B.C.  
 Canada V5Y 3E1  
 Phone (604) 879-7878  
 Fax (604) 879-7898  
 [109817:44:49:89101498]

### Northern Analytical Laboratories

**15 Samples**

Out: Oct 14, 1998 In: Oct 13, 1998

Project : W.O. #5621  
 Shipper : Norm Smith  
 Shipment: PO#: 054575  
**Analysis:**  
 ICP(AqR)30

**Comment:**

**Document Distribution**

1 Northern Analytical Laboratories	EN	RT	CC	IN	FX
105 Copper Road	1	2	1	1	0
Behorse	DL	3D	EM	BT	BL
Y1A 2Z7	0	0	0	0	0
Canada	Ph:867/668-4968				
Att: Norm Smith	Fx:867/668-4890				
	Em:NAL@hypertech.yk.ca				

CODE	AMOUNT	TYPE	PREPARATION DESCRIPTION	PULP	REJECT		
B311	15	Pulp	Pulp received as it is, no sample prep.	12M/Dis	00M/Dis		
<b>Analytical Summary</b>							
##	Code	Method	Units	Description	Element	Limit Low	Limit High
01	0721	ICP	ppm	Ag ICP	Silver	0.1	99.9
02	0711	ICP	ppm	Cu ICP	Copper	1	20000
03	0714	ICP	ppm	Pb ICP	Lead	2	20000
04	0730	ICP	ppm	Zn ICP	Zinc	1	20000
05	0703	ICP	ppm	As ICP	Arsenic	5	9999
06	0702	ICP	ppm	Sb ICP	Antimony	5	999
07	0732	ICP	ppm	Hg ICP	Mercury	3	9999
08	0717	ICP	ppm	Mo ICP	Molybdenum	1	999
09	0747	ICP	ppm	Tl ICP (Incomplete Digestion)	Thallium	10	999
10	0705	ICP	ppm	Bi ICP	Bismuth	2	9999
11	0707	ICP	ppm	Cd ICP	Cadmium	0.1	99.9
12	0710	ICP	ppm	Co ICP	Cobalt	1	9999
13	0718	ICP	ppm	Ni ICP	Nickel	1	9999
14	0704	ICP	ppm	Ba ICP (Incomplete Digestion)	Barium	2	9999
15	0727	ICP	ppm	W ICP (Incomplete Digestion)	Tungsten	5	999
16	0709	ICP	ppm	Cr ICP (Incomplete Digestion)	Chromium	1	9999
17	0729	ICP	ppm	V ICP	Vanadium	2	9999
18	0716	ICP	ppm	Mn ICP	Manganese	1	9999
19	0713	ICP	ppm	La ICP (Incomplete Digestion)	Lanthanum	2	9999
20	0723	ICP	ppm	Sr ICP (Incomplete Digestion)	Strontium	1	9999
21	0731	ICP	ppm	Zr ICP	Zirconium	1	9999
22	0736	ICP	ppm	Sc ICP	Scandium	1	9999
23	0726	ICP	%	Ti ICP (Incomplete Digestion)	Titanium	0.01	1.00
24	0701	ICP	%	Al ICP (Incomplete Digestion)	Aluminum	0.01	9.99
25	0708	ICP	%	Ca ICP (Incomplete Digestion)	Calcium	0.01	9.99
26	0712	ICP	%	Fe ICP	Iron	0.01	9.99
27	0715	ICP	%	Mg ICP (Incomplete Digestion)	Magnesium	0.01	9.99
28	0720	ICP	%	K ICP (Incomplete Digestion)	Potassium	0.01	9.99
29	0722	ICP	%	Na ICP (Incomplete Digestion)	Sodium	0.01	5.00
30	0719	ICP	%	P ICP	Phosphorus	0.01	5.00

EN=Envelope # P Report Style CC=Copies IN=Invoices Fx=Fax(1=Yes 0=No) Totals: 1=Copy 1=Inv 0=3 1/2 Disk  
 DL=Download 3 Disk EM=E-Mail BT=BBS Type BL=BBS(1=Yes 0=No) ID=C030901

\* Our liability is limited solely to the analytical cost of these analyses.

**BC Certified Assayer: David Chiu**



# CERTIFICATE OF ANALYSIS

## iPL 98J1098

2036 Columbia Street  
 Vancouver, B.C.  
 Canada V5Y 3E1  
 Phone (604) 879-7878  
 Fax (604) 879-7898

INTERNATIONAL PLASMA LABORATORY LTD.

Client : Northern Analytical Laboratories  
 Project: W.O. #5621

**15 Samples**  
 15=Pulp

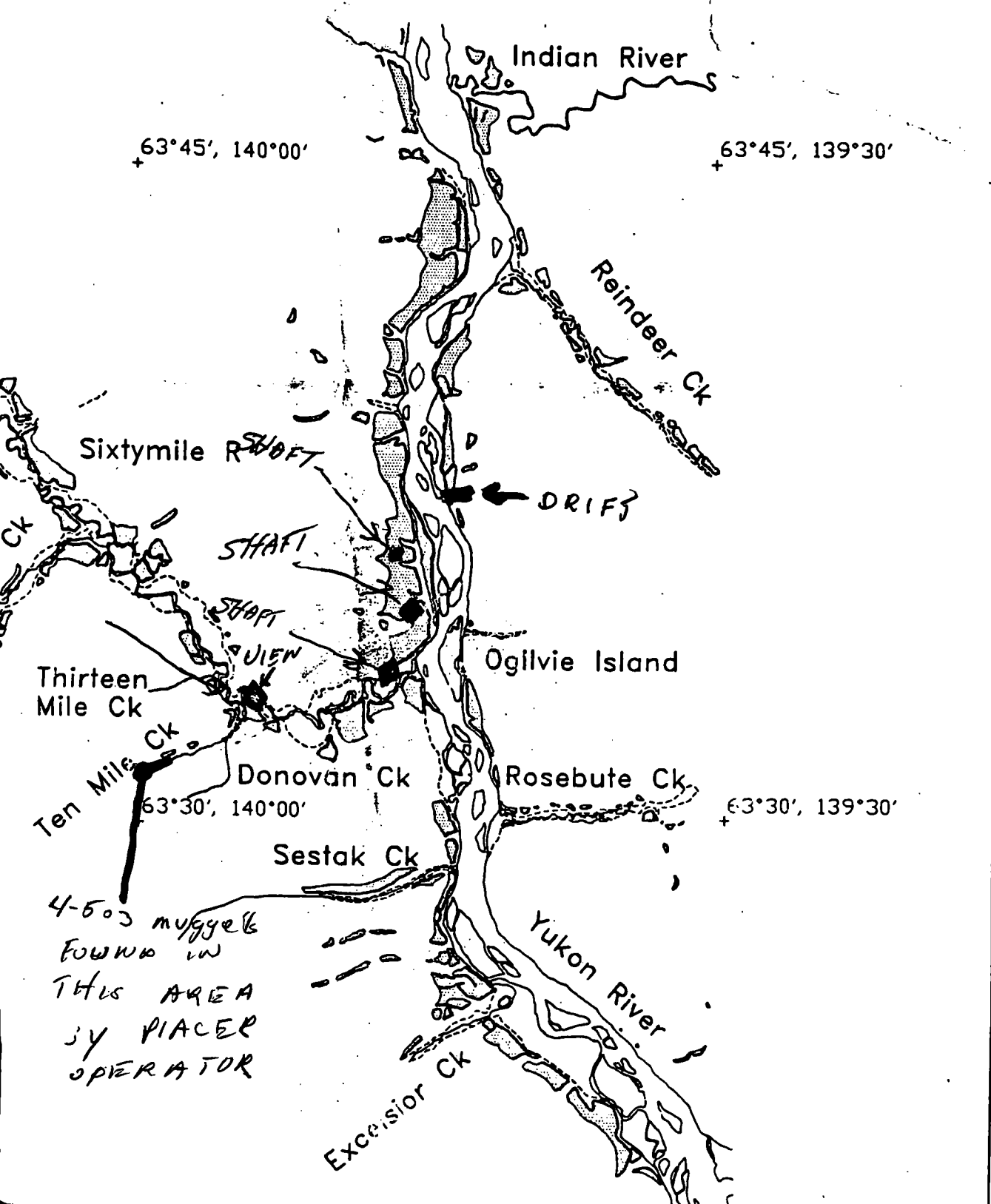
[109817:44:49:89101498] Out: Oct 14, 1998 Page 1 of 1  
 In : Oct 13, 1998 Section 1 of 1

Sample Name	Ag ppm	Cu ppm	Pb ppm	Zn ppm	As ppm	Sb ppm	Hg ppm	Mo ppm	Tl ppm	Bi ppm	Cd ppm	Co ppm	Ni ppm	Ba ppm	W ppm	Cr ppm	V ppm	Mn ppm	La ppm	Sr ppm	Zr ppm	Sc ppm	Ti %	Al %	Ca %	Fe %	Mg %	K %	Na %	P %
RD - 1	P <	26	34	95	55	<	<	2	<	<	9.8	17	18	301	<	24	93	358	37	28	6	8	0.04	1.94	0.43	4.46	0.52	0.11	<	0.06
S - 1	P 0.3	54	13	140	100	<	<	3	<	<	7.3	17	23	224	<	28	82	908	13	90	7	5	0.11	2.98	3.78	2.74	0.89	0.52	0.14	0.33
S - 2	P <	77	12	86	86	<	<	3	<	<	12.2	20	24	166	<	26	167	683	9	33	6	12	0.19	3.17	0.70	5.25	1.46	0.13	<	0.05
S - 3	P <	40	10	77	57	<	<	1	<	<	7.2	18	20	285	<	25	84	1006	8	50	3	6	0.14	1.89	0.65	3.30	0.88	0.43	<	0.07
S - 5	P <	52	15	76	70	<	<	1	<	<	8.9	24	37	206	<	59	100	807	8	41	3	9	0.14	2.36	0.72	3.89	1.41	0.23	<	0.06
S - 6	P <	51	12	111	65	<	<	1	<	<	8.2	19	21	512	<	23	98	832	10	55	2	6	0.16	2.28	0.86	3.57	1.05	0.71	<	0.09
V 1	P 0.7	39	91	48	223	<	<	3	<	<	5.2	13	10	117	<	106	85	404	2	23	1	5	0.13	1.22	0.44	2.37	0.95	0.25	<	0.09
V 2	P 0.2	10	22	17	46	<	<	<	<	<	1.8	3	7	43	<	175	22	128	<	5	<	1	0.02	0.31	0.08	0.86	0.19	0.08	0.01	0.01
V 3	P 0.1	8	21	23	45	<	<	2	<	<	3.0	5	5	47	<	117	37	191	3	16	1	2	0.04	0.53	0.20	1.46	0.29	0.15	0.01	0.04
V - 4	P <	11	6	19	23	<	<	1	<	<	1.9	4	7	29	<	154	22	154	<	10	<	1	0.04	0.33	0.18	0.91	0.21	0.10	0.01	0.02
V - 5	P <	10	12	67	43	<	<	1	<	<	5.1	12	8	135	<	77	53	363	8	44	2	2	0.14	1.17	0.54	2.33	0.87	0.39	0.03	0.09
V - 6	P <	4	2	5	9	<	<	1	<	<	0.5	1	4	20	<	169	3	86	<	4	<	<	<	0.08	0.04	0.30	0.03	0.04	0.01	0.01
V - 7	P 1.3	6	11	22	41	<	<	16	<	<	1.8	4	6	74	<	182	17	114	3	17	<	1	0.04	0.45	0.14	0.87	0.19	0.16	0.01	0.03
V - 8	P <	3	16	5	8	<	<	2	<	<	0.5	1	2	150	<	87	<	36	26	3	7	1	<	0.11	0.01	0.30	0.01	0.14	0.01	<
WSH	P <	41	11	69	50	<	<	2	<	<	6.9	18	30	297	<	37	89	582	5	37	2	5	0.12	1.90	0.50	3.21	0.81	0.17	<	0.05

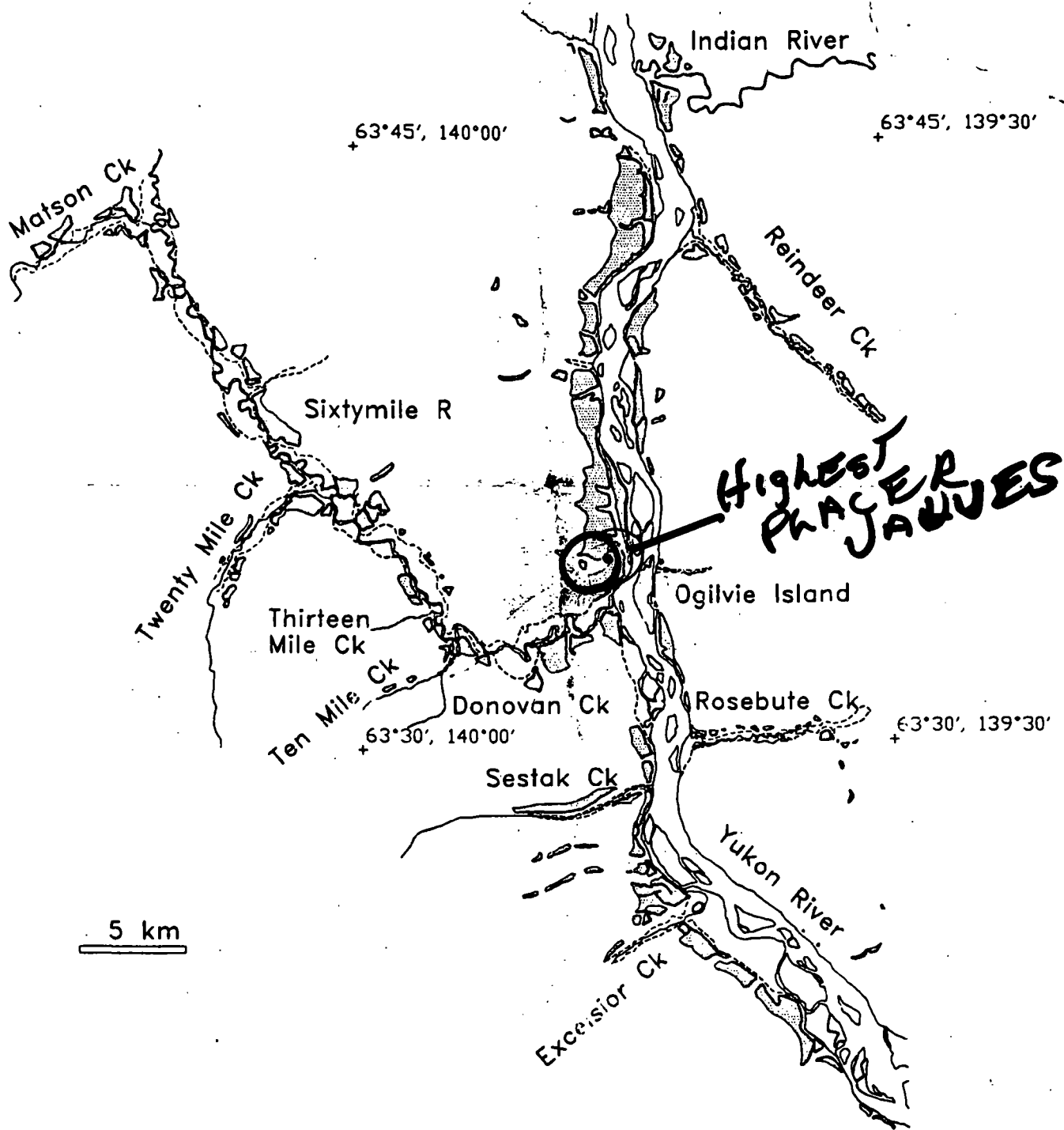
Min Limit 0.1 1 2 1 5 5 3 1 10 2 0.1 1 1 2 5 1 2 1 2 1 1 1 0.01 0.01 0.01 0.01 0.01 0.01 0.01 0.01 0.01  
 Max Reported\* 1.9 20000 20000 20000 9999 999 9999 999 999 9999 99.9 9999 9999 9999 9999 9999 9999 9999 9999 9999 9999 9999 9999 9999 1.00 9.99 9.99 9.99 9.99 9.99 5.00  
 Method ICP  
 —=No Test Ins=Insufficient Sample Del=Delay Max=No Estimate Rec=ReCheck m=x1000 %=Estimate % NS=No Sample P=Pulp

# PROSPECT PLACER SHAFTS

D SHAFT  
□ DRIFT



4-500 nuggets  
found in  
this area  
by placer  
operator





value, but the prospects are certainly encouraging enough to warrant further investigation.

The existence of a group of quartz veins at the head of Victoria gulch, carrying free gold in such quantities, is interesting from the fact that the pay streak on Bonanza creek practically stops at the mouth of this gulch. Victoria gulch itself is gold-bearing, and the gold obtained near its head is rough and unworn and looks as if it had just dropped out of its original matrix. It is not inferred from this, of course, that all the gold on Bonanza creek originated from this source, as the coarse gold found along this stream could not have travelled any distance, but that some of it came from this point seems beyond question.

Quartz veins are prominent in places along Sixty-mile river and a couple of specimens collected proved to be auriferous. A vein about four feet wide cuts the granite-gneisses about a mile below Twelve-mile creek, in the upper portion of the river. A specimen from this vein was assayed in the laboratory of the Survey and yielded 0.058 ounces of gold to the ton. A vein was also found about six miles above the mouth of the river, on a bluff 200 feet above the level of the valley, a specimen from which assayed 0.117 ounces or nearly \$2.50 to the ton. This vein consisted of light brown drusy quartz and at the point examined it was fully eight feet in width. It apparently belongs to a different class from the ordinary small gash veins of the district, and is worth a closer examination, as the proportion of gold usually varies along the strike and portions of this vein may be rich enough to work.

Quartz veins occur in the schists of the Salmon river country, but the only specimens assayed from this district proved to be barren. Specimens from a vein on Fish creek, a tributary of the South fork, which carried iron and copper pyrites and galena were shown to the writer. The vein is stated to be of large size, but it was not examined.

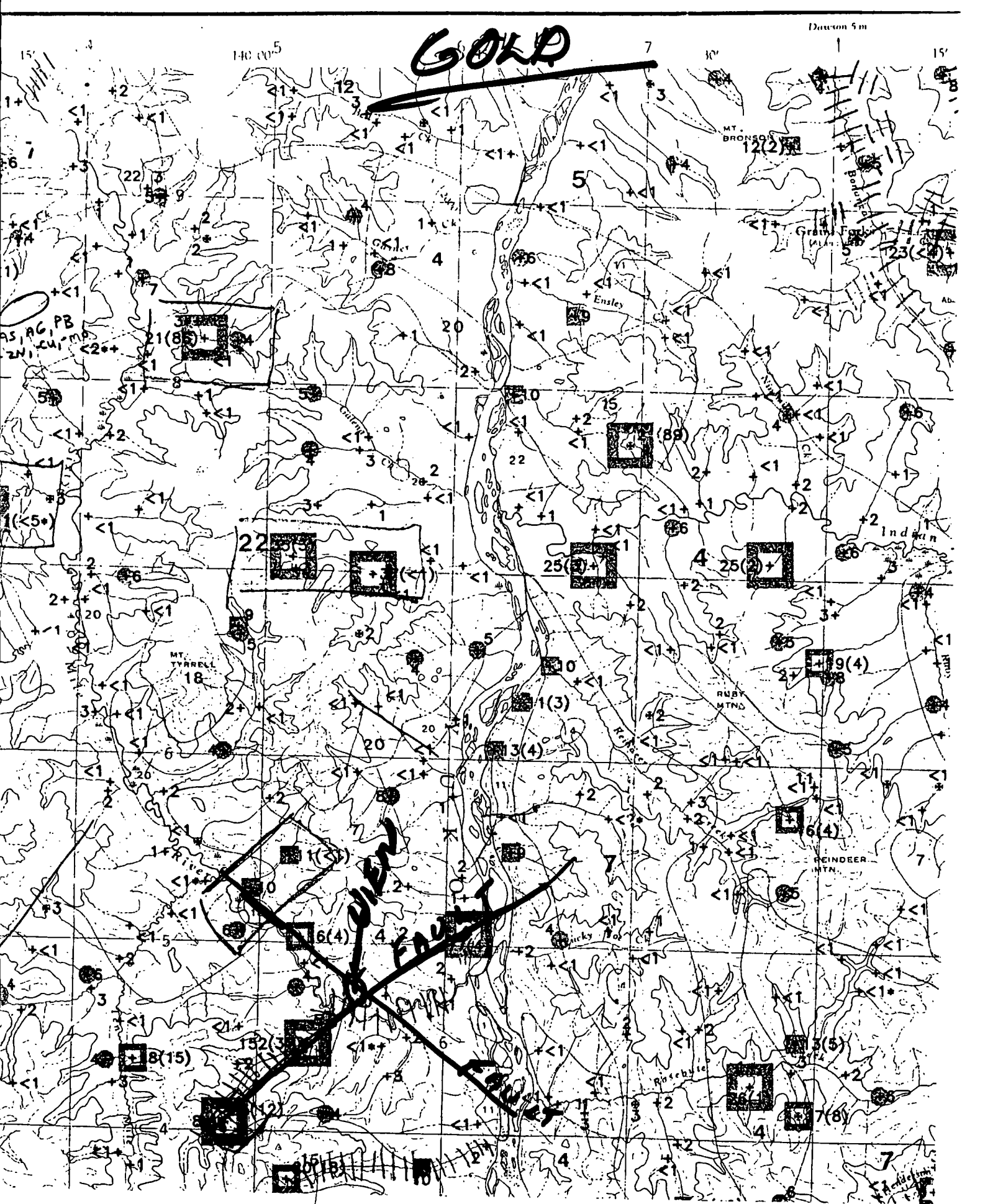
#### River Dredging

The dredging operations at Cassiar bar, on the Lewes river, in 1900 proved a failure. About 50,000 cubic yards of gravel were washed, and the average yield, so I was informed by one of those interested, averaged only five cents per cubic yard. The bar has been abandoned and the plant transferred to a claim on Bonanza creek, where it is reported to be doing satisfactory work. Cassiar bar was worked in early days by the miners, and was supposed to offer exceptional facilities for dredging. The failure there has, on this account, led to an impression that a like result would attend dredging operations in any part of the district. This opinion, it seems to me, is not well founded. Cassiar bar is situated a long distance from the source of supply and, as a consequence, the gold is very light, and is confined, as is usual in such circumstances, to a thin layer of gravel immediately beneath the surface. The conditions are entirely different on streams or portions of streams, near to, or cutting the rocks from which the gold originates. The grains in the latter case are heavier, are less easily moved, and the gravels increase in richness, as a rule, towards bed-rock. The bars on Forty-mile river, a stream cutting the gold-bearing schists throughout nearly its whole course, afford a good example of this. The gold on the auriferous bars on this stream is much coarser than that obtained from Cassiar bar and the best pay occurs near bed-rock. The gravels on the Klondike river below the mouths of the gold-bearing creeks has been proved to be auriferous to some

*Bos Toth Report*

extent down to bed-rock, and gold, in grains much coarser than the ordinary flake gold of river-bars, has been found in the bed of the Stewart, and also on the bars of the Big Salmon. Whether dredging would pay on any of the streams mentioned, is a question which can only be answered by careful prospecting or actual work, but it is obvious that the result of a single experiment cannot be accepted as settling the matter in the negative for the whole district.

# GOLD



117 sq. NO GOVERNMENT SURVEY IN 3000 P.P.B. THIS AREA?

























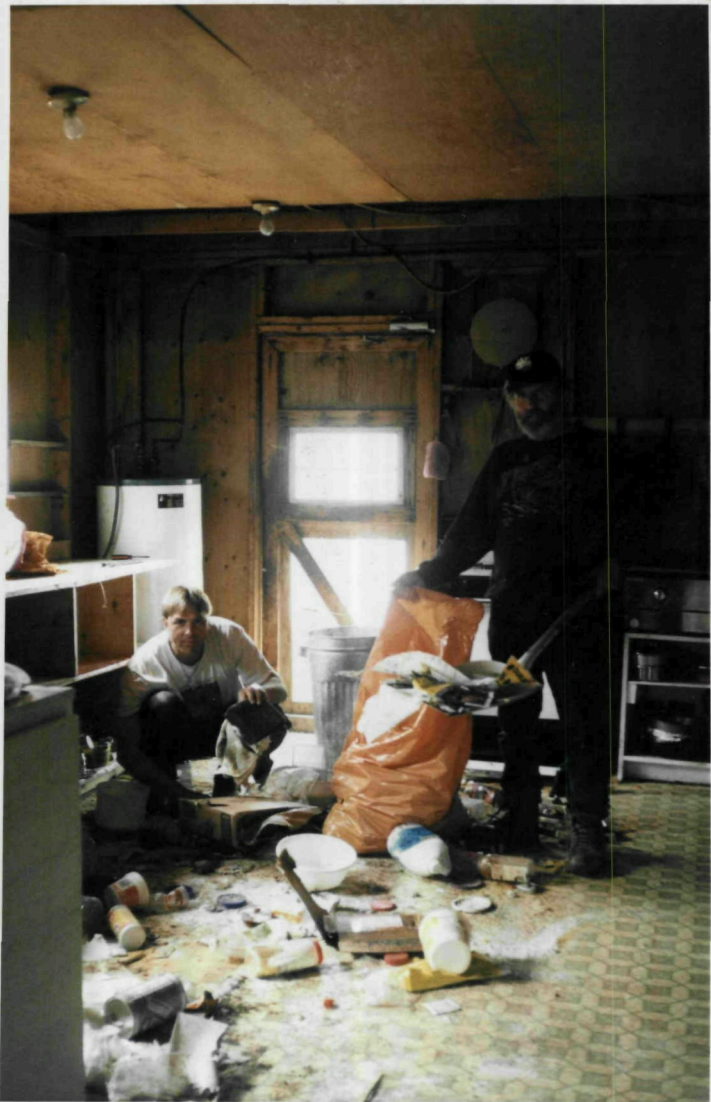


Chopping willows  
on airstrip to  
get airplane  
out.





Staking claim  
on ten mile  
of his claim was  
not recorded.



Cleaning up  
Camp on 10 miles  
after Bear.

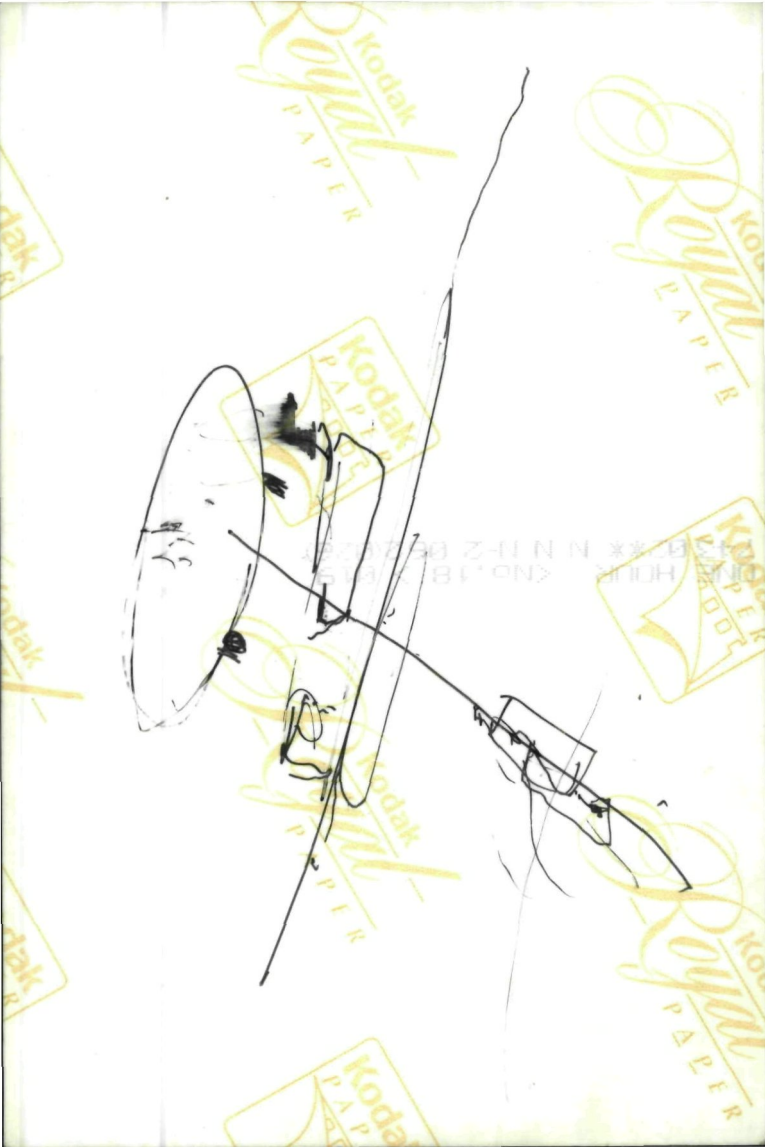














~~2~~ LOOKING  
AT PYRITE  
ZONE THREE  
MILES FROM  
MOUTH OF  
TENN  
MILE

















98-046

Sunday  
DimancheMonday  
LundiThursday  
JeudiFriday  
VendrediYUKON ENERGY SERVICES  
& REPAIRS LIBRARYP.O. Box 2113  
Whitehorse, Yukon Y1A 2C8July  
Juillet

5

July - Juillet 1997							July - Juillet 1998							July - Juillet 1999							July - Juillet 2000						
S/D	M/L	T/M	W/M	TH/J	F/V	S/S	S/D	M/L	T/M	W/M	TH/J	F/V	S/S	S/D	M/L	T/M	W/M	TH/J	F/V	S/S	S/D	M/L	T/M	W/M	TH/J	F/V	S/S
6	7	8	9	10	11	12	5	6	7	8	9	10	11	4	5	6	7	8	9	10	2	3	4	5	6	7	8
13	14	15	16	17	18	19	12	13	14	15	16	17	18	11	12	13	14	15	16	17	9	10	11	12	13	14	15
20	21	22	23	24	25	26	19	20	21	22	23	24	25	18	19	20	21	22	23	24	16	17	18	19	20	21	22
27	28	29	30	31			26	27	28	29	30	31		25	26	27	28	29	30	31	30	31					

Went with food & motor from Dawson to Sixty mile River with Fred Hoines. Walked up small pup 1 mile below. ~~The~~ Sixty mile sampling bedrock and panning. Some small colours were found on surface. ~~At~~ ~~it~~ Made a decision where to test. Returned to Yukon River and took jeep and I went to 10 mile camp. This camp belongs to John Carter.

6

July  
JuilletSunday  
DimancheMonday  
LundiTuesday  
MardiWednesday  
MercrediThursday  
JeudiFriday  
VendrediSaturday  
Samedi

July - Juillet 1997								July - Juillet 1998								July - Juillet 1999								July - Juillet 2000							
S/D	M/L	T/M	W/M	TH/J	F/V	S/S		S/D	M/L	T/M	W/M	TH/J	F/V	S/S		S/D	M/L	T/M	W/M	TH/J	F/V	S/S		S/D	M/L	T/M	W/M	TH/J	F/V	S/S	
6	7	8	9	10	11	12	13	5	6	7	8	9	10	11	12	4	5	6	7	8	9	10	11	2	3	4	5	6	7	8	9
13	14	15	16	17	18	19	20	12	13	14	15	16	17	18	19	11	12	13	14	15	16	17	18	9	10	11	12	13	14	15	16
20	21	22	23	24	25	26	27	19	20	21	22	23	24	25	26	18	19	20	21	22	23	24	25	16	17	18	19	20	21	22	23
								26	27	28	29	30	31			25	26	27	28	29	30	31		30	31						

Reed and I returned  
to Apukon River to  
small pup with tools  
to dig prospect hole  
1 mile up small creek.  
dug two feet down  
and returned to tent  
mile by jeep. Too many  
bears to set up camp  
so will ~~stay~~ use  
10 mile as base  
and travel with jeep  
to Apukon.

Sunday            Monday            Tuesday            Wednesday             
 Dimanche            Lundi            Mardi            Mercredi             
 Thursday            Friday            Saturday             
 Jeudi            Vendredi            Samedi           

July  
 Juillet

7

July - juillet 1997							July - juillet 1998							July - juillet 1999							July - juillet 2000						
S/D	M/L	T/M	W/M	TH/J	F/V	S/S	S/D	M/L	T/M	W/M	TH/J	F/V	S/S	S/D	M/L	T/M	W/M	TH/J	F/V	S/S	S/D	M/L	T/M	W/M	TH/J	F/V	S/S
6	7	8	9	10	11	12	5	6	7	8	9	10	11	4	5	6	7	8	9	10	2	3	4	5	6	7	8
13	14	15	16	17	18	19	12	13	14	15	16	17	18	11	12	13	14	15	16	17	9	10	11	12	13	14	15
20	21	22	23	24	25	26	19	20	21	22	23	24	25	18	19	20	21	22	23	24	16	17	18	19	20	21	22
27	28	29	30	31			26	27	28	29	30	31		25	26	27	28	29	30	31	30	31					

Prove from 10 mile  
 camp to Yukon river  
 walked up small pass  
 and dug down it about  
 4 ft. small colours  
 of gold but no great  
 amount. Spent day  
 and returned to 10 mile  
 camp. No water  
 in hole yet as very  
 dry.

# 8

# July Juillet

 Sunday  
Dimanche

 Monday  
Lundi

 Tuesday  
Mardi

 Wednesday  
Mercredi

 Thursday  
Jeudi

 Friday  
Vendredi

 Saturday  
Samedi

July - Juillet								1997								July - Juillet								1998								July - Juillet								1999								July - Juillet								2000																																																						
S/D	M/L	T/M	W/M	THJ	F/V	S/S		S/D	M/L	T/M	W/M	THJ	F/V	S/S		S/D	M/L	T/M	W/M	THJ	F/V	S/S		S/D	M/L	T/M	W/M	THJ	F/V	S/S		S/D	M/L	T/M	W/M	THJ	F/V	S/S		S/D	M/L	T/M	W/M	THJ	F/V	S/S		S/D	M/L	T/M	W/M	THJ	F/V	S/S																																																								
6	7	8	9	10	11	12	13	5	6	7	8	9	10	11	4	5	6	7	8	9	10	11	11	12	13	14	15	16	17	18	5	6	7	8	9	10	11	12	12	13	14	15	16	17	18	19	2	3	4	5	6	7	8	9	9	10	11	12	13	14	15	16	16	17	18	19	20	21	22	23	2	3	4	5	6	7	8	9	10	11	12	13	14	15	16	17	16	17	18	19	20	21	22	23	30	31	25	26	27	28	29	30	30	31	25	26	27	28	29	30

Drove back to Yukon  
 River with Reed and  
 went up small gup  
 to prospect hole. Reed  
 wandered up small  
 tributaries of gup: mostly  
 rock outcroppings & and  
 very interesting flood.  
 We are looking for  
 a Spain type contact  
 Return with Jeep to  
 Ten Miles.



Sunday  
Dimanche

Monday  
Lundi

Tuesday  
Mardi

Wednesday  
Mercredi

Thursday  
Jeudi

Friday  
Vendredi

Saturday  
Samedi

July  
Juillet

9

July - juillet 1997							July - juillet 1998							July - juillet 1999							July - juillet 2000						
S/D	M/L	T/M	W/M	TH/J	F/V	S/S	S/D	M/L	T/M	W/M	TH/J	F/V	S/S	S/D	M/L	T/M	W/M	TH/J	F/V	S/S	S/D	M/L	T/M	W/M	TH/J	F/V	S/S
6	7	8	9	10	11	12	5	6	7	8	9	10	11	4	5	6	7	8	9	10	2	3	4	5	6	7	8
13	14	15	16	17	18	19	12	13	14	15	16	17	18	11	12	13	14	15	16	17	9	10	11	12	13	14	15
20	21	22	23	24	25	26	19	20	21	22	23	24	25	18	19	20	21	22	23	24	16	17	18	19	20	21	22
27	28	29	30	31			26	27	28	29	30	31		25	26	27	28	29	30	31	23	24	25	26	27	28	29

Above the Gibson  
River with jeep. Day  
1 ft more in prospect  
hole. Problems with  
water. Abandoned hole  
and went down  
upon river by foot  
to ~~the~~ ~~as~~  
to Dawson as Reid had  
something else to do.

# 10

# July Juillet

Sunday  
Dimanche

Monday  
Lundi

Tuesday  
Mardi

Wednesday  
Mercredi

Thursday  
Jeudi

Friday  
Vendredi

Saturday  
Samedi

July - Juillet 1997								July - Juillet 1998								July - Juillet 1999								July - Juillet 2000							
S/D	M/L	T/M	W/M	TH/J	F/V	S/S		S/D	M/L	T/M	W/M	TH/J	F/V	S/S		S/D	M/L	T/M	W/M	TH/J	F/V	S/S		S/D	M/L	T/M	W/M	TH/J	F/V	S/S	
6	7	8	9	10	11	12	13	5	6	7	8	9	10	11	4	5	6	7	8	9	10	11	11	12	13	14	15	16	17	18	
13	14	15	16	17	18	19	20	12	13	14	15	16	17	18	11	12	13	14	15	16	17	18	18	19	20	21	22	23	24	25	
20	21	22	23	24	25	26	27	19	20	21	22	23	24	25	18	19	20	21	22	23	24	25	25	26	27	28	29	30	31		
27	28	29	30	31				26	27	28	29	30	31		25	26	27	28	29	30	31		30	31							





Sunday \_\_\_\_\_ Monday \_\_\_\_\_ Tuesday \_\_\_\_\_ Wednesday \_\_\_\_\_  
 Dimanche \_\_\_\_\_ Lundi \_\_\_\_\_ Mardi \_\_\_\_\_ Mercredi \_\_\_\_\_  
 Thursday \_\_\_\_\_ Friday \_\_\_\_\_ Saturday \_\_\_\_\_  
 Jeudi \_\_\_\_\_ Vendredi \_\_\_\_\_ Samedi \_\_\_\_\_

July  
 Juillet

27

July - Juillet 1997								July - Juillet 1998								July - juillet 1999								July - Juillet 2000																																	
S/D	M/L	T/M	W/M	TH/J	F/V	S/S		S/D	M/L	T/M	W/M	TH/J	F/V	S/S		S/D	M/L	T/M	W/M	TH/J	F/V	S/S		S/D	M/L	T/M	W/M	TH/J	F/V	S/S																											
6	7	8	9	10	11	12		5	6	7	8	9	10	11	12		4	5	6	7	8	9	10	11	12		2	3	4	5	6	7	8	9	10	11	12																				
13	14	15	16	17	18	19		12	13	14	15	16	17	18	19	20		11	12	13	14	15	16	17	18	19	20	21	22	23	24	25	26	27	28	29	30	31																			
20	21	22	23	24	25	26		19	20	21	22	23	24	25	26	27	28	29	30	31		18	19	20	21	22	23	24	25	26	27	28	29	30	31		30	31																			



28

July  
JuilletSunday  
DimancheMonday  
LundiTuesday  
MardiWednesday  
MercrediThursday  
JeudiFriday  
VendrediSaturday  
Samedi

July - juillet 1997								July - juillet 1998								July - juillet 1999								July - juillet 2000							
S/D	M/L	T/W	W/M	TH/J	F/V	S/S		S/D	M/L	T/W	W/M	TH/J	F/V	S/S		S/D	M/L	T/W	W/M	TH/J	F/V	S/S		S/D	M/L	T/W	W/M	TH/J	F/V	S/S	
6	7	1	2	3	4	5		5	6	7	1	2	3	4		4	5	6	7	1	2	3		2	3	4	5	6	7	1	
13	14	15	16	17	18	19		13	14	15	16	17	18	19		11	12	13	14	15	16	17		9	10	11	12	13	14	15	
20	21	22	23	24	25	26		19	20	21	22	23	24	25		18	19	20	21	22	23	24		16	17	18	19	20	21	22	
27								26	27	28	29	30	31			25	26	27	28	29	30	31		23	24	25	26	27	28	29	

Flew with Bonanza  
air to Tombers airstrip  
on Ten Mile Creek.

Ried Hines was taken  
in to help with a grid  
program on 10 mile creek.

Spent 2 hrs with  
machete & axe clearing  
willows off of airstrip  
BENT 200 WNW  
on willows on landing  
Brian was not happy.

Airstrip was overgrown  
from no recent mining  
activity. Camp was  
wrecked by bears.  
Spent rest of evening  
cleaning up camp.

Went with Jay up  
10 mile to show Ried  
~~the~~ the area to be  
sampled. ~~Had~~ Hauled  
hardware and supplies from  
airstrip to camp.



Sunday  
Dimanche

Monday  
Lundi

Tuesday  
Mardi

Wednesday  
Mercredi

July  
Juillet

29

Thursday  
Jeudi

Friday  
Vendredi

Saturday  
Samedi

July - juillet 1997							July - juillet 1998							July - juillet 1999							July - juillet 2000						
S/D	M/L	T/W	W/M	TH/J	F/Y	S/S	S/D	M/L	T/W	W/M	TH/J	F/Y	S/S	S/D	M/L	T/W	W/M	TH/J	F/Y	S/S	S/D	M/L	T/W	W/M	TH/J	F/Y	S/S
6	7	8	9	10	11	12	5	6	7	8	9	10	11	4	5	6	7	8	9	10	2	3	4	5	6	7	8
13	14	15	16	17	18	19	12	13	14	15	16	17	18	11	12	13	14	15	16	17	9	10	11	12	13	14	15
20	21	22	23	24	25	26	19	20	21	22	23	24	25	18	19	20	21	22	23	24	16	17	18	19	20	21	22
27	28	29	30	31			26	27	28	29	30	31		25	26	27	28	29	30	31	30	31					

High Hines sampled  
Left limit 3 miles up  
on Ten mile and  
I sampled and bagged  
right limit on 10 mile  
We were about 3 miles  
up from mouth.  
Loaded A.T.V on  
Jeep and took it out  
on road road to upper  
River and returned to  
Camp with A.T.V.



30

July  
JuilletSunday  
DimancheMonday  
LundiTuesday  
MardiWednesday  
MercrediThursday  
JeudiFriday  
VendrediSaturday  
Samedi

July - Juillet							1997							July - Juillet							1998							July - Juillet							1999							July - Juillet							2000						
SD	ML	TM	WM	TH	FV	SS	SD	ML	TM	WM	TH	FV	SS	SD	ML	TM	WM	TH	FV	SS	SD	ML	TM	WM	TH	FV	SS	SD	ML	TM	WM	TH	FV	SS	SD	ML	TM	WM	TH	FV	SS	SD	ML	TM	WM	TH	FV	SS							
6	7	8	9	10	11	12	5	6	7	8	9	10	11	4	5	6	7	8	9	10	11	12	13	14	15	16	17	2	3	4	5	6	7	8	9	10	11	12	13	14	15	16	17	18	19	20	21	22	23	24	25	26	27	28	29
13	14	15	16	17	18	19	12	13	14	15	16	17	18	11	12	13	14	15	16	17	18	19	20	21	22	23	24	1	2	3	4	5	6	7	8	9	10	11	12	13	14	15	16	17	18	19	20	21	22	23	24	25	26	27	28
20	21	22	23	24	25	26	19	20	21	22	23	24	25	18	19	20	21	22	23	24	25	26	27	28	29	30	31	10	11	12	13	14	15	16	17	18	19	20	21	22	23	24	25	26	27	28	29	30							
27	28	29	30	31			26	27	28	29	30	31		25	26	27	28	29	30									3	4	5	6	7	8	9	10	11	12	13	14	15	16	17	18	19	20	21	22	23	24	25	26	27	28	29	30

Sampled and bagged  
Left & right limit  
3 miles up DOMINE  
CREEK. Stopped the  
area and returned  
to Dawson City by  
2:06 Airplane.

Sunday            Monday            Tuesday            Wednesday             
 Dimanche            Lundi            Mardi            Mercredi           

Thursday            Friday            Saturday             
 Jeudi            Vendredi            Samedi           

August  
 Août

4

August - Août 1997							August - Août 1998							August - Août 1999							August - Août 2000						
SID	M/L	T/M	W/M	THJ	F/V	S/S	SID	M/L	T/M	W/M	THJ	F/V	S/S	SID	M/L	T/M	W/M	THJ	F/V	S/S	SID	M/L	T/M	W/M	THJ	F/V	S/S
3	4	5	6	7	8	9	2	3	4	5	6	7	8	1	2	3	4	5	6	7	6	7	8	9	10	11	12
10	11	12	13	14	15	16	9	10	11	12	13	14	15	8	9	10	11	12	13	14	13	14	15	16	17	18	19
17	18	19	20	21	22	23	16	17	18	19	20	21	22	15	16	17	18	19	20	21	20	21	22	23	24	25	26
24	25	26	27	28	29	30	23	24	25	26	27	28	29	22	23	24	25	26	27	28	27	28	29	30	31		
31							30	31						29	30												

Met Jim Roberts down  
 by boat landing. He  
 agreed to come up river.  
 Gathered up supplies  
 and small ~~to~~ Winopa pump  
 and returned up river  
 to sixty miles. Took  
 jeep drive to ten mile  
 Camp. While going  
 up on airstrip noticed  
 Bears feeding on hillside.  
 Two sheep were reported  
 in area. While glassing  
 with binoculars noticed  
 something white in  
 small poplars. Decided  
 it was not sheep but  
 maybe Oryzopsis or limestone  
 outcrop. Got some barrels  
 and chained them together  
 to cross river.

5

August  
AoûtSunday  
DimancheMonday  
LundiTuesday  
MardiWednesday  
MercrediThursday  
JeudiFriday  
VendrediSaturday  
Samedi

August - Août 1997								August - Août 1998								August - Août 1999								August - Août 2000							
S/D	M/L	T/M	W/M	TH/J	F/V	S/S		S/D	M/L	T/M	W/M	TH/J	F/V	S/S		S/D	M/L	T/M	W/M	TH/J	F/V	S/S		S/D	M/L	T/M	W/M	TH/J	F/V	S/S	
3	4	5	6	7	8	9	10	2	3	4	5	6	7	8	9	1	2	3	4	5	6	7	8	6	7	8	9	10	11	12	13
10	11	12	13	14	15	16	17	9	10	11	12	13	14	15	16	8	9	10	11	12	13	14	15	13	14	15	16	17	18	19	20
17	18	19	20	21	22	23	24	16	17	18	19	20	21	22	23	15	16	17	18	19	20	21	22	20	21	22	23	24	25	26	27
24	25	26	27	28	29	30	31	23	24	25	26	27	28	29	30	22	23	24	25	26	27	28	29	27	28	29	30	31			
31								30	31							29	30	31													

Crossed Sixty mile River  
with tubrell raft  
and started up hill  
to check Quartz siting  
Very steep hill and hard  
walking. Checked the  
showing and found a  
8 ft wide quartz vein  
I believed to be the  
one Bostock reported  
at 117 oz ton. Crossed  
back over river and  
returned to camp.

Sunday Dimanche    Monday Lundi    Tuesday Mardi    Wednesday Mercredi  
 Thursday Jeudi    Friday Vendredi    Saturday Samedi

August  
Août

6

August - Août 1997								August - Août 1998								August - Août 1999								August - Août 2000							
S/D	M/L	T/M	W/M	TH/J	F/V	S/S		S/D	M/L	T/M	W/M	TH/J	F/V	S/S		S/D	M/L	T/M	W/M	TH/J	F/V	S/S		S/D	M/L	T/M	W/M	TH/J	F/V	S/S	
3	4	5	6	7	8	9		2	3	4	5	6	7	8	9	1	2	3	4	5	6	7		6	7	8	9	10	11	12	
10	11	12	13	14	15	16		10	11	12	13	14	15	16	17	8	9	10	11	12	13	14		13	14	15	16	17	18	19	
17	18	19	20	21	22	23		16	17	18	19	20	21	22	23	15	16	17	18	19	20	21		20	21	22	23	24	25	26	
24	25	26	27	28	29	30		23	24	25	26	27	28	29		22	23	24	25	26	27	28		27	28	29	30	31			
31								30	31							29	30	31													

Crossed ~~off~~ river and  
 raft with hammers  
 and back packs. Noticed  
 the bears on hillside.  
 One laid down. The  
 other a bigger bear ran  
 over the ridge. Sampled  
 the view and took rock  
 samples back to camp.

# 7

# August Août

Sunday  
DimancheMonday  
LundiTuesday  
MardiWednesday  
MercrediThursday  
JeudiFriday  
VendrediSaturday  
Samedi

August - Août 1997							August - Août 1998							August - Août 1999							August - Août 2000						
S/D	M/L	T/M	W/M	TR/J	F/V	S/S	S/D	M/L	T/M	W/M	TR/J	F/V	S/S	S/D	M/L	T/M	W/M	TR/J	F/V	S/S	S/D	M/L	T/M	W/M	TR/J	F/V	S/S
3	4	5	6	7	8	9	2	3	4	5	6	7	8	1	1	2	3	4	5	6	7	8	9	10	11	12	13
10	11	12	13	14	15	16	9	10	11	12	13	14	15	15	16	17	18	19	20	21	22	23	24	25	26	27	28
17	18	19	20	21	22	23	16	17	18	19	20	21	22	22	23	24	25	26	27	28	29	30	31	1	2	3	4
24	25	26	27	28	29	30	23	24	25	26	27	28	29	29	30	31											
31							30	31																			

Crossed river and sampled  
area again. Hauled  
more rock samples  
to camp for crushing





Sunday \_\_\_\_\_ Monday \_\_\_\_\_ Tuesday \_\_\_\_\_ Wednesday \_\_\_\_\_  
 Dimanche \_\_\_\_\_ Lundi \_\_\_\_\_ Mardi \_\_\_\_\_ Mercredi \_\_\_\_\_  
 Thursday \_\_\_\_\_ Friday \_\_\_\_\_ Saturday \_\_\_\_\_  
 Jeudi \_\_\_\_\_ Vendredi \_\_\_\_\_ Samedi \_\_\_\_\_

August  
Août

8

August - Août 1997								August - Août 1998								August - Août 1999								August - Août 2000							
S/D	M/L	T/M	W/M	TH/J	F/V	S/S		S/D	M/L	T/M	W/M	TH/J	F/V	S/S		S/D	M/L	T/M	W/M	TH/J	F/V	S/S		S/D	M/L	T/M	W/M	TH/J	F/V	S/S	
3	4	5	6	7	8	9		2	3	4	5	6	7	8		1	2	3	4	5	6	7		6	7	8	9	10	11	12	
10	11	12	13	14	15	16		9	10	11	12	13	14	15		8	9	10	11	12	13	14		13	14	15	16	17	18	19	
17	18	19	20	21	22	23		16	17	18	19	20	21	22		15	16	17	18	19	20	21		20	21	22	23	24	25	26	
24	25	26	27	28	29	30		23	24	25	26	27	28	29		22	23	24	25	26	27	28		27	28	29	30	31			
31								30	31							29	30	31													

Crossed River and  
sampled area. Placed  
more rock samples  
to comp for crushing



9

August  
Août

Sunday

Dimanche

Monday

Lundi

Tuesday

Mardi

Wednesday

Mercredi

Thursday

Jeudi

Friday

Vendredi

Saturday

Samedi

August - Août 1997							August - Août 1998							August - Août 1999							August - Août 2000						
S/D	M/L	T/M	W/M	TH/J	F/V	S/S	S/D	M/L	T/M	W/M	TH/J	F/V	S/S	S/D	M/L	T/M	W/M	TH/J	F/V	S/S	S/D	M/L	T/M	W/M	TH/J	F/V	S/S
3	4	5	6	7	8	9	2	3	4	5	6	7	8	1	2	3	4	5	6	7	6	7	8	9	10	11	12
10	11	12	13	14	15	16	9	10	11	12	13	14	15	8	9	10	11	12	13	14	13	14	15	16	17	18	19
17	18	19	20	21	22	23	16	17	18	19	20	21	22	15	16	17	18	19	20	21	20	21	22	23	24	25	26
24	25	26	27	28	29	30	23	24	25	26	27	28	29	22	23	24	25	26	27	28	27	28	29	30	31		
31							30	31						29	30						28	29					

Drove Jeep from 10 mile camp to River. Hunted small pump and tools and gas up ~~small~~ tributary to prospect shaft to pump water from hole as it rained a bit. Went with motor boat to Dawson for more supplies.

Sunday \_\_\_\_\_ Monday \_\_\_\_\_ Tuesday \_\_\_\_\_ Wednesday \_\_\_\_\_  
 Dimanche \_\_\_\_\_ Lundi \_\_\_\_\_ Mardi \_\_\_\_\_ Mercredi \_\_\_\_\_  
 Thursday \_\_\_\_\_ Friday \_\_\_\_\_ Saturday \_\_\_\_\_  
 Jeudi \_\_\_\_\_ Vendredi \_\_\_\_\_ Samedi \_\_\_\_\_

August  
 Août

18

August - Août 1997								August - Août 1998								August - Août 1999								August - Août 2000							
S/D	M/L	T/M	W/M	TH/J	F/V	S/S		S/D	M/L	T/M	W/M	TH/J	F/V	S/S		S/D	M/L	T/M	W/M	TH/J	F/V	S/S		S/D	M/L	T/M	W/M	TH/J	F/V	S/S	
3	4	5	6	7	8	9	10	2	3	4	5	6	7	8	9	1	2	3	4	5	6	7	8	6	7	8	9	10	11	12	13
10	11	12	13	14	15	16	17	9	10	11	12	13	14	15	16	8	9	10	11	12	13	14	15	13	14	15	16	17	18	19	20
17	18	19	20	21	22	23	24	16	17	18	19	20	21	22	23	15	16	17	18	19	20	21	22	20	21	22	23	24	25	26	27
24	25	26	27	28	29	30	31	23	24	25	26	27	28	29	30	22	23	24	25	26	27	28	29	27	28	29	30	31			



19

August  
AoûtSunday  
DimancheMonday  
LundiTuesday  
MardiWednesday  
Mercredi ✓Thursday  
JeudiFriday  
VendrediSaturday  
Samedi

August - Août 1997							August - Août 1998							August - Août 1999							August - Août 2000						
S/D	M/L	T/M	W/M	TH/J	F/V	S/S	S/D	M/L	T/M	W/M	TH/J	F/V	S/S	S/D	M/L	T/M	W/M	TH/J	F/V	S/S	S/D	M/L	T/M	W/M	TH/J	F/V	S/S
3	4	5	6	7	1	2	2	3	4	5	6	7	1	1	2	3	4	5	6	7	6	7	1	2	3	4	5
10	11	12	13	14	15	16	9	10	11	12	13	14	15	8	9	10	11	12	13	14	13	14	15	16	17	18	19
17	18	19	20	21	22	23	16	17	18	19	20	21	22	15	16	17	18	19	20	21	20	21	22	23	24	25	26
24	25	26	27	28	29	30	23	24	25	26	27	28	29	22	23	24	25	26	27	28	27	28	29	30	31		
31							30	31						29	30	31											

Put a inflatable raft  
on pump and Weber ~~and~~  
~~also~~ with a two-stroke  
horse motor on Howard  
Smith barge and a  
12 ft aluminum riveted  
ghus motor on this barge  
is heading to sixty mile  
for Coast McKenzie.

Went to pickup and  
flew in with legs  
the mechanics. ~~that~~ We  
picked up D.S. and and shove  
it from 10 mile to river  
with fuel tank. Wades  
till 9:AM barge was  
not here yet so returned  
to camp

Sunday \_\_\_\_\_ Monday \_\_\_\_\_ Tuesday \_\_\_\_\_ Wednesday \_\_\_\_\_  
 Dimanche \_\_\_\_\_ Lundi \_\_\_\_\_ Mardi \_\_\_\_\_ Mercredi \_\_\_\_\_  
 Thursday \_\_\_\_\_ Friday \_\_\_\_\_ Saturday \_\_\_\_\_  
 Jeudi \_\_\_\_\_ Vendredi \_\_\_\_\_ Samedi \_\_\_\_\_

August 20  
 Août

August - Août 1997							August - Août 1998							August - Août 1999							August - Août 2000						
S/D	M/L	T/M	W/M	TH/J	F/Y	S/S	S/D	M/L	T/M	W/M	TH/J	F/Y	S/S	S/D	M/L	T/M	W/M	TH/J	F/Y	S/S	S/D	M/L	T/M	W/M	TH/J	F/Y	S/S
3	4	5	6	7	8	9	2	3	4	5	6	7	8	1	2	3	4	5	6	7	6	7	8	9	10	11	12
10	11	12	13	14	15	16	9	10	11	12	13	14	15	8	9	10	11	12	13	14	13	14	15	16	17	18	19
17	18	19	20	21	22	23	16	17	18	19	20	21	22	15	16	17	18	19	20	21	20	21	22	23	24	25	26
24	25	26	27	28	29	30	23	24	25	26	27	28	29	22	23	24	25	26	27	28	27	28	29	30	31		
31							30	31						29	30	31											

Went from 10 mile back  
 out to river pick up  
 2000 gals fuel and went  
 back to ten miles. I  
 loaded up my ball mill  
 with rocks fired up  
 generator and let them  
 get crushed up.



# 25

# August Août

Sunday  
Dimanche  
Thursday  
Jeudi

Monday  
Lundi  
Friday  
Vendredi

Tuesday  
Mardi  
Saturday  
Samedi

Wednesday  
Mercredi

August - Août 1997							August - Août 1998							August - Août 1999							August - Août 2000						
S/D	M/L	T/M	W/M	TH/J	F/V	S/S	S/D	M/L	T/M	W/M	TH/J	F/V	S/S	S/D	M/L	T/M	W/M	TH/J	F/V	S/S	S/D	M/L	T/M	W/M	TH/J	F/V	S/S
3	4	5	6	7	1	2	2	3	4	5	6	7	1	1	2	3	4	5	6	7	6	7	1	2	3	4	5
10	11	12	13	14	8	9	9	10	11	12	13	14	8	8	9	10	11	12	13	14	13	14	15	16	17	18	19
17	18	19	20	21	15	16	16	17	18	19	20	21	15	15	16	17	18	19	20	21	20	21	22	23	24	25	26
24	25	26	27	28	22	23	23	24	25	26	27	28	22	22	23	24	25	26	27	28	27	28	29	30	31	28	29
31					30		30	31					30	29	30	31											

Stayed in camp crushing  
rock and helping to  
clean up garbage from  
other miners and boys.



Sunday \_\_\_\_\_ Monday \_\_\_\_\_ Tuesday \_\_\_\_\_ Wednesday \_\_\_\_\_  
 Dimanche \_\_\_\_\_ Lundi \_\_\_\_\_ Mardi \_\_\_\_\_ Mercredi \_\_\_\_\_  
 Thursday \_\_\_\_\_ Friday \_\_\_\_\_ Saturday \_\_\_\_\_  
 Jeudi \_\_\_\_\_ Vendredi \_\_\_\_\_ Samedi \_\_\_\_\_

August  
Août

24

August - Août 1997							August - Août 1998							August - Août 1999							August - Août 2000						
SID	M/L	T/M	W/M	TH/J	F/V	S/S	SID	M/L	T/M	W/M	TH/J	F/V	S/S	SID	M/L	T/M	W/M	TH/J	F/V	S/S	SID	M/L	T/M	W/M	TH/J	F/V	S/S
3	4	5	6	7	8	9	2	3	4	5	6	7	8	1	2	3	4	5	6	7	6	7	8	9	10	11	12
10	11	12	13	14	15	16	9	10	11	12	13	14	15	8	9	10	11	12	13	14	13	14	15	16	17	18	19
17	18	19	20	21	22	23	16	17	18	19	20	21	22	15	16	17	18	19	20	21	20	21	22	23	24	25	26
24	25	26	27	28	29	30	23	24	25	26	27	28	29	22	23	24	25	26	27	28	27	28	29	30	31		
31							30	31						29													

Stayed at camp  
 hauling water and firing  
 robbers while crushing  
 rock in ball mill.



# 25

# August Août

Sunday \_\_\_\_\_ Monday \_\_\_\_\_ Tuesday \_\_\_\_\_ Wednesday \_\_\_\_\_  
 Dimanche \_\_\_\_\_ Lundi \_\_\_\_\_ Mardi \_\_\_\_\_ Mercredi \_\_\_\_\_  
 Thursday \_\_\_\_\_ Friday \_\_\_\_\_ Saturday \_\_\_\_\_  
 Jeudi \_\_\_\_\_ Vendredi \_\_\_\_\_ Samedi \_\_\_\_\_

August - Août 1997							August - Août 1998							August - Août 1999							August - Août 2000						
S/D	M/L	T/M	W/M	TH/J	FR/V	S/S	S/D	M/L	T/M	W/M	TH/J	FR/V	S/S	S/D	M/L	T/M	W/M	TH/J	FR/V	S/S	S/D	M/L	T/M	W/M	TH/J	FR/V	S/S
3	4	5	6	7	7	2	2	3	4	5	6	7	7	7	2	3	4	5	6	7	6	7	7	2	3	4	5
10	11	12	13	14	15	16	9	10	11	12	13	14	15	8	9	10	11	12	13	14	13	14	15	16	17	18	19
17	18	19	20	21	22	23	16	17	18	19	20	21	22	15	16	17	18	19	20	21	20	21	22	23	24	25	26
24	25	26	27	28	29	30	23	24	25	26	27	28	29	22	23	24	25	26	27	28	27	28	29	30	31	1	2
31							30	31						29	30						28	29					

Stayed in camp crushing  
 rock and helping to  
 clean up garbage for  
 other miners and boys.





Sunday \_\_\_\_\_ Monday \_\_\_\_\_ Tuesday \_\_\_\_\_ Wednesday \_\_\_\_\_  
 Dimanche \_\_\_\_\_ Lundi \_\_\_\_\_ Mardi \_\_\_\_\_ Mercredi \_\_\_\_\_  
 Thursday \_\_\_\_\_ Friday \_\_\_\_\_ Saturday \_\_\_\_\_  
 Jeudi \_\_\_\_\_ Vendredi \_\_\_\_\_ Samedi \_\_\_\_\_

August  
Août

26

August - Août 1997							August - Août 1998							August - Août 1999							August - Août 2000						
S/D	M/L	T/M	W/M	TH/J	F/V	S/S	S/D	M/L	T/M	W/M	TH/J	F/V	S/S	S/D	M/L	T/M	W/M	TH/J	F/V	S/S	S/D	M/L	T/M	W/M	TH/J	F/V	S/S
3	4	5	6	7	8	9	2	3	4	5	6	7	8	1	2	3	4	5	6	7	6	7	8	9	10	11	12
10	11	12	13	14	15	16	9	10	11	12	13	14	15	8	9	10	11	12	13	14	13	14	15	16	17	18	19
17	18	19	20	21	22	23	16	17	18	19	20	21	22	15	16	17	18	19	20	21	20	21	22	23	24	25	26
24	25	26	27	28	29	30	23	24	25	26	27	28	29	22	23	24	25	26	27	28	27	28	29	30	31		
31							30	31						29	30	31											

Shove from camp to  
 River with Lee and  
 took 12 ft aluminum  
 boat & motor back to  
 Tom Dawson.

# 8

# September Septembre

Sunday  
DimancheMonday  
LundiTuesday  
MardiWednesday  
MercrediThursday  
JeudiFriday  
VendrediSaturday  
Samedi

September - Septembre 1997								September - Septembre 1998								September - Septembre 1999								September - Septembre 2000							
S/D	M/L	T/M	W/M	TH/J	F/V	S/S		S/D	M/L	T/M	W/M	TH/J	F/V	S/S		S/D	M/L	T/M	W/M	TH/J	F/V	S/S		S/D	M/L	T/M	W/M	TH/J	F/V	S/S	
7	8	9	10	11	12	13	6	13	14	15	16	17	18	19	5	12	13	14	15	16	17	18	3	10	11	12	13	14	15	16	
14	15	16	17	18	19	20	7	14	15	16	17	18	19	20	6	13	14	15	16	17	18	19	4	11	12	13	14	15	16	17	
21	22	23	24	25	26	27	13	20	21	22	23	24	25	26	12	19	20	21	22	23	24	25	10	17	18	19	20	21	22	23	
28	29	30					20	27	28	29	30				26	26	27	28	29	30			24	24	25	26	27	28	29	30	

Traveled with my  
18 ft fibre glass & 50h  
mercury boat up river  
to Sixty mile. Camped  
in boat overnight.

Sunday  
Dimanche  
Thursday  
Jeudi

Monday  
Lundi  
Friday  
Vendredi

Tuesday  
Mardi  
Saturday  
Samedi

Wednesday  
Mercredi

September  
Septembre

9

September - Septembre 1997								September - Septembre 1998								September - Septembre 1999								September - Septembre 2000							
S/D	M/L	T/M	W/M	TH/J	F/V	S/S		S/D	M/L	T/M	W/M	TH/J	F/V	S/S		S/D	M/L	T/M	W/M	TH/J	F/V	S/S		S/D	M/L	T/M	W/M	TH/J	F/V	S/S	
7	1	2	3	4	5	6		6	7	1	2	3	4	5		5	6	7	1	2	3	4		3	4	5	6	7	1	2	
14	8	9	10	11	12	13		13	14	8	9	10	11	12		12	13	14	15	16	17	18		10	11	12	13	14	15	16	
21	15	16	17	18	19	20		20	21	15	16	17	18	19		19	20	21	22	23	24	25		17	18	19	20	21	22	23	
28	22	23	24	25	26	27		27	28	22	23	24	25	26		26	27	28	29	30		25		24	25	26	27	28	29	30	

Pumped up Zodiac boat  
put on motor and went  
1 mile downstream from  
mouth to pup. Water is  
very low and too shallow  
for big boat. Went  
1 mile up ~~to~~ pup to  
prospect holes pumped  
out the water. Was able  
to dig 1 more foot.

Returned to mouth of  
twenty mile and left  
in big boat.



# 10

# September Septembre

Sunday  
DimancheMonday  
LundiTuesday  
MardiWednesday  
MercrediThursday  
JeudiFriday  
VendrediSaturday  
Samedi

September - Septembre 1997							September - Septembre 1998							September - Septembre 1999							September - Septembre 2000						
S/D	M/L	T/M	W/M	TH/J	F/V	S/S	S/D	M/L	T/M	W/M	TH/J	F/V	S/S	S/D	M/L	T/M	W/M	TH/J	F/V	S/S	S/D	M/L	T/M	W/M	TH/J	F/V	S/S
1	2	3	4	5	6	7	1	2	3	4	5	6	7	1	2	3	4	5	6	7	1	2	3	4	5	6	7
8	9	10	11	12	13	14	8	9	10	11	12	13	14	8	9	10	11	12	13	14	8	9	10	11	12	13	14
15	16	17	18	19	20	21	15	16	17	18	19	20	21	15	16	17	18	19	20	21	15	16	17	18	19	20	21
22	23	24	25	26	27	28	22	23	24	25	26	27	28	22	23	24	25	26	27	28	22	23	24	25	26	27	28
29	30						29	30						29	30						29	30					

Left sixty mile mouth  
early morning & went  
to prospect hole on small  
pup. carried in small  
aluminum shuce and  
sweered all the dirt  
back into hole. Walked  
back to SOPAC &  
return to sixty mile  
River mouth and camped  
in boat.

Sunday \_\_\_\_\_ Monday \_\_\_\_\_ Tuesday \_\_\_\_\_ Wednesday \_\_\_\_\_  
 Dimanche \_\_\_\_\_ Lundi \_\_\_\_\_ Mardi \_\_\_\_\_ Mercredi \_\_\_\_\_  
 Thursday \_\_\_\_\_ Friday \_\_\_\_\_ Saturday \_\_\_\_\_  
 Jeudi \_\_\_\_\_ Vendredi \_\_\_\_\_ Samedi \_\_\_\_\_

September 11  
 Septembre 11

September - Septembre 1997							September - Septembre 1998							September - Septembre 1999							September - Septembre 2000						
S/D	M/L	T/M	W/M	TH/J	F/V	S/S	S/D	M/L	T/M	W/M	TH/J	F/V	S/S	S/D	M/L	T/M	W/M	TH/J	F/V	S/S	S/D	M/L	T/M	W/M	TH/J	F/V	S/S
7	1	2	3	4	5	6	6	7	1	2	3	4	5	5	6	7	1	2	3	4	10	11	12	13	14	15	16
14	8	9	10	11	12	13	13	14	8	9	10	11	12	12	13	14	15	16	17	18	17	18	19	20	21	22	23
21	15	16	17	18	19	20	20	21	22	23	24	25	26	19	20	21	22	23	24	25	24	25	26	27	28	29	30
28	22	23	24	25	26	27	27	28	29	30				26	27	28	29	30			24	25	26	27	28	29	30

Left sixty mile mouth  
 early morning went  
 with Sochea to small  
 pup. Picked out gas  
 pumps shoes and tools  
 and concentrate and  
 returned to sixty mile  
 river and slept in boat.



# 12

## September Septembre

Sunday  
Dimanche

Monday  
Lundi

Tuesday  
Mardi

Wednesday  
Mercredi

Thursday  
Jeudi

Friday  
Vendredi

Saturday  
Samedi

September - Septembre 1997							September - Septembre 1998							September - Septembre 1999							September - Septembre 2000							
S/D	M/L	T/M	W/M	TH/J	F/V	S/S	S/D	M/L	T/M	W/M	TH/J	F/V	S/S	S/D	M/L	T/M	W/M	TH/J	F/V	S/S	S/D	M/L	T/M	W/M	TH/J	F/V	S/S	
7	1	2	3	4	5	6	6	7	8	9	10	11	12	5	6	7	8	9	10	11	4	3	4	5	6	7	1	2
14	8	9	10	11	12	13	13	14	15	16	17	18	19	12	13	14	15	16	17	18	10	11	12	13	14	15	16	9
21	15	16	17	18	19	20	20	21	22	23	24	25	26	19	20	21	22	23	24	25	17	18	19	20	21	22	23	16
28	22	23	24	25	26	27	27	28	29	30				26	27	28	29	30			24	25	26	27	28	29	30	15

Stayed today on small island in front of sixty mile river mouth. Water very low. Had some panning and got a good pan of 100 flou gold coins?



Sunday \_\_\_\_\_ Monday \_\_\_\_\_ Tuesday \_\_\_\_\_ Wednesday \_\_\_\_\_  
 Dimanche \_\_\_\_\_ Lundi \_\_\_\_\_ Mardi \_\_\_\_\_ Mercredi \_\_\_\_\_  
 Thursday \_\_\_\_\_ Friday \_\_\_\_\_ Saturday \_\_\_\_\_  
 Jeudi \_\_\_\_\_ Vendredi \_\_\_\_\_ Samedi \_\_\_\_\_

# September 13

## Septembre

September - Septembre 1997								September - Septembre 1998								September - Septembre 1999								September - Septembre 2000							
S/D	M/L	T/M	W/M	TH/J	F/V	S/S		S/D	M/L	T/M	W/M	TH/J	F/V	S/S		S/D	M/L	T/M	W/M	TH/J	F/V	S/S		S/D	M/L	T/M	W/M	TH/J	F/V	S/S	
7	1	2	3	4	5	6		6	7	1	2	3	4	5		5	6	7	1	2	3	4		3	4	5	6	7	1	2	
14	8	9	10	11	12	13		13	14	8	9	10	11	12		12	13	14	15	16	17	18		10	11	12	13	14	15	16	
21	15	16	17	18	19	20		20	21	15	16	17	18	19		19	20	21	22	23	24	25		17	18	19	20	21	22	23	
28	22	23	24	25	26	27		27	28	22	23	24	25	26		26	27	28	29	30				24	25	26	27	28	29	30	

Returned with boat to  
 from Sixty mile river  
 to Newton city smelt  
 propeller in slough by  
 Leonard Dobbells water  
 is very low.



Sunday  
Dimanche

Monday  
Lundi

Tuesday  
Mardi

Wednesday  
Mercredi

September  
Septembre

15

Thursday  
Jeudi

Friday  
Vendredi

Saturday  
Samedi

September - Septembre 1997								September - Septembre 1998								September - Septembre 1999								September - Septembre 2000							
S/D	M/L	T/M	W/M	TH/J	F/V	S/S		S/D	M/L	T/M	W/M	TH/J	F/V	S/S		S/D	M/L	T/M	W/M	TH/J	F/V	S/S		S/D	M/L	T/M	W/M	TH/J	F/V	S/S	
7	1	2	3	4	5	6		6	7	8	9	10	11	12		5	6	7	8	9	10	11	12		3	4	5	6	7	8	9
14	15	16	17	18	19	20		13	14	15	16	17	18	19		12	13	14	15	16	17	18	19		10	11	12	13	14	15	16
21	22	23	24	25	26	27		20	21	22	23	24	25	26		19	20	21	22	23	24	25	26		17	18	19	20	21	22	23
28	29	30						28	29	30						26	27	28	29	30					24	25	26	27	28	29	30

7 lew & Jan Wild on  
with B. Mungia Air  
accompanied by Doug  
Jackson. Hauled supplies  
and groceries ~~from~~  
and gas etc from  
gristmill to camp.  
Doug took 4 wheel A.T.A  
and looked the creek and  
proposed great over to  
get his bearings & directions.  
Better to do this before  
you get lost.





16

September  
SeptembreSunday  
Dimanche

Monday

Lundi

Tuesday

Mardi

Wednesday

Mercredi

Thursday  
Jeudi

Friday

Vendredi

Saturday

Samedi

September - Septembre 1997							September - Septembre 1998							September - Septembre 1999							September - Septembre 2000							
S/D	M/L	T/W	W/M	TH/J	F/V	S/S	S/D	M/L	T/W	W/M	TH/J	F/V	S/S	S/D	M/L	T/W	W/M	TH/J	F/V	S/S	S/D	M/L	T/W	W/M	TH/J	F/V	S/S	
7	1	2	3	4	5	6	6	7	8	9	10	11	12	5	6	7	8	9	10	11	12	3	4	5	6	7	8	9
14	15	16	17	18	19	20	13	14	15	16	17	18	19	12	13	14	15	16	17	18	19	10	11	12	13	14	15	16
21	22	23	24	25	26	27	20	21	22	23	24	25	26	19	20	21	22	23	24	25	26	17	18	19	20	21	22	23
28	29	30					27	28	29	30				26	27	28	29	30				24	25	26	27	28	29	30

Grew to Ten mile  
 creek with Bonanza  
 division with Doug  
 Jackson. Hauled supplies  
 and gas, propane etc to  
 Camp. Doug went with  
 4 wheel A.T.V. to get  
 his directions and bearings.  
 Better to do this than  
 get lost.

Sunday \_\_\_\_\_ Monday \_\_\_\_\_ Tuesday \_\_\_\_\_ Wednesday \_\_\_\_\_  
 Dimanche \_\_\_\_\_ Lundi \_\_\_\_\_ Mardi \_\_\_\_\_ Mercredi \_\_\_\_\_  
 Thursday \_\_\_\_\_ Friday \_\_\_\_\_ Saturday \_\_\_\_\_  
 Jeudi \_\_\_\_\_ Vendredi \_\_\_\_\_ Samedi \_\_\_\_\_

September 17  
 Septembre 17

September - Septembre 1997								September - Septembre 1998								September - Septembre 1999								September - Septembre 2000							
S/D	M/L	T/M	W/M	TH/J	F/V	S/S		S/D	M/L	T/M	W/M	TH/J	F/V	S/S		S/D	M/L	T/M	W/M	TH/J	F/V	S/S		S/D	M/L	T/M	W/M	TH/J	F/V	S/S	
7	1	2	3	4	5	6		6	7	8	9	10	11	12		5	6	7	8	9	10	11		3	4	5	6	7	8	9	
14	8	9	10	11	12	13		13	14	15	16	17	18	19		12	13	14	15	16	17	18		10	11	12	13	14	15	16	
21	15	16	17	18	19	20		20	21	22	23	24	25	26		19	20	21	22	23	24	25		17	18	19	20	21	22	23	
28	22	23	24	25	26	27		27	28	29	30					26	27	28	29	30				24	25	26	27	28	29	30	

Crossed Sixty mile River  
 with raft. Doug was  
 sent booming the area  
 silt and rock sampling.  
 I spent the day staking  
 and breaking rocks.  
 all rocks have a strong  
 garlic odor (Sulfur).

Returned to camp  
 with samples for  
 crushing in small  
 ball mill in future.

Ball mill is modified  
 on a cement mixer



18

September  
SeptembreSunday  
DimancheMonday  
LundiTuesday  
MardiWednesday  
MercrediThursday  
JeudiFriday  
VendrediSaturday  
Samedi

September - Septembre 1997							September - Septembre 1998							September - Septembre 1999							September - Septembre 2000						
SD	ML	Tu	We	Th	Fr	Sa	SD	ML	Tu	We	Th	Fr	Sa	SD	ML	Tu	We	Th	Fr	Sa	SD	ML	Tu	We	Th	Fr	Sa
7	1	2	3	4	5	6	6	7	8	9	10	11	12	5	6	7	8	9	10	11	3	4	5	6	7	8	9
14	8	9	10	11	12	13	13	14	15	16	17	18	19	12	13	14	15	16	17	18	10	11	12	13	14	15	16
21	15	16	17	18	19	20	20	21	22	23	24	25	26	19	20	21	22	23	24	25	17	18	19	20	21	22	23
28	22	23	24	25	26	27	27	28	29	30	24	25	26	26	27	28	29	30	24	25	24	25	26	27	28	29	30

~~Sampled~~ along and I  
crossed Sixty Mile Run  
in barrel raft. We  
staked and sampled  
the prospect area across  
from airstrip 6 miles  
up from airstrip. More  
rocks were hauled back  
to crush. No free gold  
is found.

Sunday \_\_\_\_\_ Monday \_\_\_\_\_ Tuesday \_\_\_\_\_ Wednesday \_\_\_\_\_  
 Dimanche \_\_\_\_\_ Lundi \_\_\_\_\_ Mardi \_\_\_\_\_ Mercredi \_\_\_\_\_

Thursday \_\_\_\_\_ Friday \_\_\_\_\_ Saturday \_\_\_\_\_  
 Jeudi \_\_\_\_\_ Vendredi \_\_\_\_\_ Samedi \_\_\_\_\_

September  
 Septembre

19

September - Septembre 1997								September - Septembre 1998								September - Septembre 1999								September - Septembre 2000							
S/D	M/L	T/M	W/M	TH/J	F/V	S/S		S/D	M/L	T/M	W/M	TH/J	F/V	S/S		S/D	M/L	T/M	W/M	TH/J	F/V	S/S		S/D	M/L	T/M	W/M	TH/J	F/V	S/S	
7	1	2	3	4	5	6		6	7	8	2	3	4	5		5	6	7	8	1	2	3	4	3	4	5	6	7	1	2	3
14	8	9	10	11	12	13		13	14	15	16	17	18	19		12	13	14	15	16	17	18	19	10	11	12	13	14	15	16	17
21	15	16	17	18	19	20		20	21	22	23	24	25	26		19	20	21	22	23	24	25	26	17	18	19	20	21	22	23	24
28	22	23	24	25	26	27		27	28	29	30					26	27	28	29	30				24	25	26	27	28	29	30	

Doug and I spent the morning finishing staking and rock sampling. Doug spent the rest of the day having rock samples to camp for crushing.



20

September  
SeptembreSunday  
Dimanche  
Thursday  
JeudiMonday  
Lundi  
Friday  
VendrediTuesday  
Mardi  
Saturday  
SamediWednesday  
Mercredi

September - Septembre 1997								September - Septembre 1998								September - Septembre 1999								September - Septembre 2000							
S/D	M/L	T/W	W/M	TH/J	F/V	S/S		S/D	M/L	T/W	W/M	TH/J	F/V	S/S		S/D	M/L	T/W	W/M	TH/J	F/V	S/S		S/D	M/L	T/W	W/M	TH/J	F/V	S/S	
7	8	9	10	11	12	13	6	6	7	8	9	10	11	12	5	5	6	7	8	9	10	11	4	3	4	5	6	7	8	9	2
14	15	16	17	18	19	20		13	14	15	16	17	18	19		12	13	14	15	16	17	18		10	11	12	13	14	15	16	
21	22	23	24	25	26	27		20	21	22	23	24	25	26		19	20	21	22	23	24	25		17	18	19	20	21	22	23	
28								27	28	29	30					26	27	28	29	30				24	25	26	27	28	29	30	

~~cut~~ Doug and I cut  
 wood and gathered up  
 gear and returned  
 to Dawson on 206  
 Bonanza in as Doug  
 went back to work  
 on Hunter Creek,

28

September  
SeptembreSunday  
Dimanche  
Thursday  
JeudiMonday  
Lundi  
Friday  
VendrediTuesday  
Mardi  
Saturday  
SamediWednesday  
Mercredi

September - Septembre 1997								September - Septembre 1998								September - Septembre 1999								September - Septembre 2000							
S/D	M/L	T/M	W/M	TH/J	F/V	S/S		S/D	M/L	T/M	W/M	TH/J	F/V	S/S		S/D	M/L	T/M	W/M	TH/J	F/V	S/S		S/D	M/L	T/M	W/M	TH/J	F/V	S/S	
7	1	2	3	4	5	6		6	7	1	2	3	4	5		5	6	7	1	2	3	4		3	4	5	6	7	1	2	
14	8	9	10	11	12	13		13	14	15	16	17	18	19		12	13	14	15	16	17	18		10	11	12	13	14	15	16	
21	15	16	17	18	19	20		20	21	22	23	24	25	26		19	20	21	22	23	24	25		17	18	19	20	21	22	23	
28	22	23	24	25	26	27		27	28	29	30					26	27	28	29	30				24	25	26	27	28	29	30	

Flew to Ten Mile  
 Cr. with Bonanza  
 Aviation with  
 Doug Jackson & Mel Weber  
 Hauled supplies in  
 to 10 mile Camp.  
 Worked on old Nodwell  
 to be able to cross  
 sixty mile river with  
 7 tree people.

Managed to get NODWELL  
 running and moved it  
 down to sixty mile  
 and left it there.

Sunday \_\_\_\_\_ Monday \_\_\_\_\_ Tuesday \_\_\_\_\_ Wednesday \_\_\_\_\_  
 Dimanche \_\_\_\_\_ Lundi \_\_\_\_\_ Mardi \_\_\_\_\_ Mercredi \_\_\_\_\_  
 Thursday \_\_\_\_\_ Friday \_\_\_\_\_ Saturday \_\_\_\_\_  
 Jeudi \_\_\_\_\_ Vendredi \_\_\_\_\_ Samedi \_\_\_\_\_

September 29  
 Septembre 29

September - Septembre 1997								September - Septembre 1998								September - Septembre 1999								September - Septembre 2000							
S/D	M/L	T/M	W/M	TH/J	F/V	S/S		S/D	M/L	T/M	W/M	TH/J	F/V	S/S		S/D	M/L	T/M	W/M	TH/J	F/V	S/S		S/D	M/L	T/M	W/M	TH/J	F/V	S/S	
7	1	2	3	4	5	6		6	7	1	2	3	4	5		5	6	7	1	2	3	4		3	4	5	6	7	1	2	
14	8	9	10	11	12	13		13	14	15	16	17	18	19		12	13	14	15	16	17	18		10	11	12	13	14	15	16	
21	15	16	17	18	19	20		20	21	22	23	24	25	26		19	20	21	22	23	24	25		17	18	19	20	21	22	23	
28	22	23	24	25	26	27		27	28	29	30					26	27	28	29	30				24	25	26	27	28	29	30	

~~Go~~ Went from camp to airstrip with jeep. fired up NoDUEHL and crossed the river. MEK helped to carry samples to NoDUEHL and along sampled rock and collected silt. some staking ~~at~~ claims, post marking etc. was done. Crossed back through river with NoDUEHL and took jeep to camp.



30

September  
SeptembreSunday  
Dimanche  
Thursday  
jeudiMonday  
Lundi  
Friday  
VendrediTuesday  
Mardi  
Saturday  
SamediWednesday  
Mercredi

September - Septembre 1997								September - Septembre 1998								September - Septembre 1999								September - Septembre 2000							
S/D	M/L	T/M	W/M	TH/J	F/V	S/S		S/D	M/L	T/M	W/M	TH/J	F/V	S/S		S/D	M/L	T/M	W/M	TH/J	F/V	S/S		S/D	M/L	T/M	W/M	TH/J	F/V	S/S	
7	1	2	3	4	5	6		6	7	8	9	10	11	12	13	5	6	7	8	9	10	11	12	3	4	5	6	7	8	9	10
14	15	16	17	18	19	20	21	13	14	15	16	17	18	19	20	12	13	14	15	16	17	18	19	10	11	12	13	14	15	16	17
21	22	23	24	25	26	27	28	20	21	22	23	24	25	26	27	19	20	21	22	23	24	25	26	17	18	19	20	21	22	23	24
28								27								26								24							

Went with Jeep from  
Camp up on 10 mile  
creek to NDDAWEK.

DD06 was driven  
across sixty mile upstream  
from 10 mile mouth and  
left there to sample  
and prospect (Rock chip)  
this area. Mel Weber  
and I then took Redwell  
and went down the sixty  
mile 2 mile and check  
out stopping for any  
mineralization. Found  
very little in bedrock  
but noticed Quartz crystals  
from the 8 ft men in  
river bottom gravel on  
sand bars. Took NDDWEK  
and picked him up  
and went to camp.  
He also had rock crystal  
float from 8 ft men  
upstream from 7 dis  
is interesting?





Sunday \_\_\_\_\_ Monday \_\_\_\_\_ Tuesday \_\_\_\_\_ Wednesday \_\_\_\_\_  
 Dimanche \_\_\_\_\_ Lundi \_\_\_\_\_ Mardi \_\_\_\_\_ Mercredi \_\_\_\_\_  
 Thursday \_\_\_\_\_ Friday \_\_\_\_\_ Saturday \_\_\_\_\_  
 Jeudi \_\_\_\_\_ Vendredi \_\_\_\_\_ Samedi \_\_\_\_\_

October  
 Octobre

1

October - Octobre 1997								October - Octobre 1998								October - Octobre 1999								October - Octobre 2000							
S/D	M/L	T/M	W/M	THJ	F/V	S/S		S/D	M/L	T/M	W/M	THJ	F/V	S/S		S/D	M/L	T/M	W/M	THJ	F/V	S/S		S/D	M/L	T/M	W/M	THJ	F/V	S/S	
5	6	7	8	9	10	11	12	11	12	13	14	15	16	17	3	4	5	6	7	8	9	10	1	2	3	4	5	6	7	8	
12	13	14	15	16	17	18	19	18	19	20	21	22	23	24	10	11	12	13	14	15	16	17	8	9	10	11	12	13	14	15	
19	20	21	22	23	24	25	26	25	26	27	28	29	30	31	17	18	19	20	21	22	23	24	15	16	17	18	19	20	21	22	
26	27	28	29	30	31			18	19	20	21	22	23	24	24	25	26	27	28	29	30	31	22	23	24	25	26	27	28	29	

Drove from camp to  
 airstrip with jeep  
 took Hochwell crossed  
 the river. Mel and  
 myself did more staking  
 plug two sent over the  
 hill to check you  
 outcropping and silt  
 sample over hill. We  
 collected more immediately  
 rock packet down  
 to Hochwell crossed  
 river and returned to  
 camp.



# 2

# October Octobre

Sunday  
DimancheMonday  
LundiTuesday  
MardiWednesday  
MercrediThursday  
JeudiFriday  
VendrediSaturday  
Samedi

October - Octobre 1997								October - Octobre 1998								October - Octobre 1999								October - Octobre 2000							
S/D	M/L	T/M	W/M	TH/J	F/V	S/S		S/D	M/L	T/M	W/M	TH/J	F/V	S/S		S/D	M/L	T/M	W/M	TH/J	F/V	S/S		S/D	M/L	T/M	W/M	TH/J	F/V	S/S	
5	6	7	8	9	10	11		4	5	6	7	8	9	10		3	4	5	6	7	8	9		1	2	3	4	5	6	7	
12	13	14	15	16	17	18		11	12	13	14	15	16	17		10	11	12	13	14	15	16		8	9	10	11	12	13	14	
19	20	21	22	23	24	25		18	19	20	21	22	23	24		17	18	19	20	21	22	23		15	16	17	18	19	20	21	
26	27	28	29	30	31			25	26	27	28	29	30	31		24	25	26	27	28	29	30		22	23	24	25	26	27	28	

Packed up camp and  
 some samples. A log  
 up bunk houses cut wood  
 for future people and  
 went to airstrip. Doug  
 had to go to work again  
 so we all went to town  
 in 206 airplane (Boonza  
 Aviation).



Sunday \_\_\_\_\_ Monday \_\_\_\_\_ Tuesday \_\_\_\_\_ Wednesday \_\_\_\_\_  
 Dimanche \_\_\_\_\_ Lundi \_\_\_\_\_ Mardi \_\_\_\_\_ Mercredi \_\_\_\_\_  
 Thursday \_\_\_\_\_ Friday \_\_\_\_\_ Saturday \_\_\_\_\_  
 Jeudi \_\_\_\_\_ Vendredi \_\_\_\_\_ Samedi \_\_\_\_\_

January  
 Janvier

26

January - Janvier 1997								January - Janvier 1998								January - Janvier 1999								January - Janvier 2000								
S/D	M/L	T/M	W/M	TH/J	F/V	S/S		S/D	M/L	T/M	W/M	TH/J	F/V	S/S		S/D	M/L	T/M	W/M	TH/J	F/V	S/S		S/D	M/L	T/M	W/M	TH/J	F/V	S/S		
5	6	7	8	9	10	11	4	11	12	13	14	15	16	17	18	3	10	11	12	13	14	15	16	2	2	3	4	5	6	7	8	1
12	13	14	15	16	17	18	5	19	20	21	22	23	24	25	26	11	17	18	19	20	21	22	23	4	9	10	11	12	13	14	15	3
19	20	21	22	23	24	25	12	26	27	28	29	30	31			18	24	25	26	27	28	29	30	5	16	17	18	19	20	21	22	4
26	27	28	29	30	31		18	25	26	27	28	29	30	31		18	31							6	23	24	25	26	27	28	29	5

Report preparations

Maps, Transverses, etc



# 27

# January Janvier

Sunday  
Dimanche  
Thursday  
Jeudi

Monday  
Lundi  
Friday  
Vendredi

Tuesday  
Mardi  
Saturday  
Samedi

Wednesday  
Mercredi

January - Janvier 1997							January - Janvier 1998							January - Janvier 1999							January - Janvier 2000						
S/D	M/L	T/M	W/M	TH/J	F/V	S/S	S/D	M/L	T/M	W/M	TH/J	F/V	S/S	S/D	M/L	T/M	W/M	TH/J	F/V	S/S	S/D	M/L	T/M	W/M	TH/J	F/V	S/S
5	6		1	2	3	4	4	5	6	7	8	9	10	3	4	5	6	7	8	9	2	3	4	5	6	7	8
12	13	7	8	9	10	11	11	12	13	14	15	16	17	10	11	12	13	14	15	16	1	2	3	4	5	6	7
19	20	21	22	23	24	25	18	19	20	21	22	23	24	17	18	19	20	21	22	23	16	17	18	19	20	21	22
26	27	28	29	30	31		25	26	27	28	29	30	31	24	25	26	27	28	29	30	16	17	18	19	20	21	22
														31							30	31					

Report preparator  
maps Travers etc



12 MAR 84  
 19 MAY 80  
 10 APR 74  
 DAWSON 19 MAY 65

1	2	3	4	5	6	7	8	9	10	11	12	13	14	15	16	17	18	19	20	21	22	23	24	25	26	27	28	29	30	31	32	33	34	35	36	37	38	39	40	41	42	43	44	45	46	47	48	49	50	51	52	53	54	55	56	57	58	59	60	61	62	63	64	65	66	67	68	69	70	71	72	73	74	75	76	77	78	79	80	81	82	83	84	85	86	87	88	89	90	91	92	93	94	95	96	97	98	99	100
---	---	---	---	---	---	---	---	---	----	----	----	----	----	----	----	----	----	----	----	----	----	----	----	----	----	----	----	----	----	----	----	----	----	----	----	----	----	----	----	----	----	----	----	----	----	----	----	----	----	----	----	----	----	----	----	----	----	----	----	----	----	----	----	----	----	----	----	----	----	----	----	----	----	----	----	----	----	----	----	----	----	----	----	----	----	----	----	----	----	----	----	----	----	----	----	----	----	----	-----

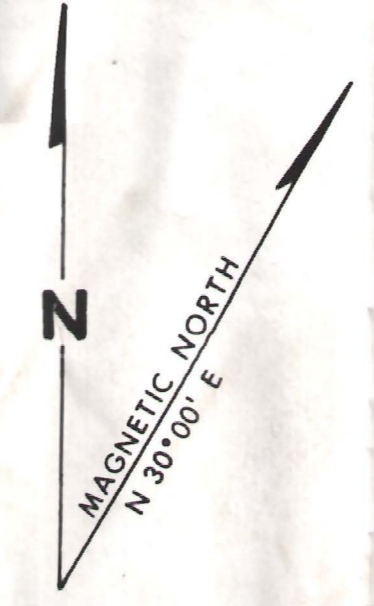
## SHEET 1150-12

### QUARTZ & PLACER

LATITUDE 63° 30' to 63° 45'  
 LONGITUDE 139° 30' to 140° 00'

SCALE 1:31,680

ISSUED UNDER THE AUTHORITY OF THE MINISTER  
 OF  
 INDIAN AFFAIRS AND NORTHERN DEVELOPMENT



**NOTICE**

THIS MAP IS ISSUED AS A PRELIMINARY GUIDE FOR WHICH THE DEPARTMENT OF INDIAN AFFAIRS AND NORTHERN DEVELOPMENT WILL ACCEPT NO RESPONSIBILITY FOR ANY ERRORS, INACCURACIES OR OMISSIONS WHATSOEVER.

TOPOGRAPHY COMPILED FROM 1:50,000 NATIONAL TOPOGRAPHIC SERIES. CONTOUR INTERVAL 500 FEET. SURVEY INFORMATION COMPILED FROM LEGAL SURVEYS, BY DRAFTING SERVICES.

Note: Entry on certain lands is withdrawn from staking in cross-hatched areas to facilitate the settlement of Native Land Claims without prejudice to Existing Surface and Subsurface Rights.

115-N-16	115-O-13	115-O-14
115-N-9	115-O-12	115-O-11
115-N-8	115-O-5	115-O-6

