

**YEIP
2000-
021
2000**

YEIP
00-021
2000
IM

Yukon Territorial Government
Exploration Incentive Program

Target Exploration

Seattle Creek Hardrock exploration

May 1, 2000 -- Nov. 1, 2000

YB44019 --- YB44058

Latitude 63 45' -- 64 00'

Longitude 136 00' -- 136 30'

Quartz claim sheet 115P-16

**YUKON ENERGY, MINES
& RESOURCES LIBRARY**
P.O. Box 2703
Whitehorse, Yukon Y1A 2C8

Prepared by Daniel C. Klippert

**YEIP
2000-
021
2000**

YE 1P.
00-021
2000

Yukon Territorial Government
Exploration Incentive Program
Target Exploration
Seattle Creek Hardrock exploration
May 1, 2000 -- Nov. 1, 2000
YB44019 --- YB44058
Latitude 63 45' -- 64 00'
Longitude 136 00' -- 136 30'
Quartz claim sheet 115P-16

**YUKON ENERGY, MINES
& RESOURCES LIBRARY**
P.O. Box 2703
Whitehorse, Yukon Y1A 2C8

Prepared by Daniel C. Klippert

2000-021

2000 Hard rock Exploration D.C.K. Claims

LOCATION

The D.C.K. claim block is located approximately 50 miles north-northwest of Mayo, Yukon. It is accessible by a 4-wheel drive road which branches off the South McQuesten road and follows upstream on Ross Creek.(see fig. 1)

GEOLOGY

Recent 1:50 000 scale mapping by Murphey and Heon (1995) shows that the property lies in the immediate hanging wall of the Robert Service Thrust Fault, which has emplaced phyllite and meta-quartzite of the late Proterozoic-Early Cambrian Highland group over Keno Hill Quartzite of Mississippian age. (see fig.5)

All of the rocks on the property are mapped as Highland Group. They lie on the south limb of the east, north-east trending Anticline, the axis of which runs along the McQuesten River Valley 8.5 km north of the property. Foliation strikes generally east, north-east, parallel to the McQuesten Anticline. Discordant foliations and several strong air photo lineaments indicate that the property is cut by north south faults or fracture zones which may have localised mineralising fluids.

The western property boundary lies approximately 1.3 km east of the Morrison Creek stock, a biotite granite body of Cretaceous age. Results of a regional aeromagnetic survey suggest that a buried intrusion or associated hornfels zone may extend beneath the south part of the property. (see fig. 4+5)

WORK PERFORMED 2000

Trenching on the DCK claim block was performed between May 1, 1999 and Oct. 31 1999 with the assistance of the Yukon mining incentive program. Utilising a D8k+D9H Cat Bulldozing Trenching commenced in the spring on the access and progressed intermittently through out the summer and fall.(see fig. 2)

TRENCHING CENTRAL RIDGE 2000

A trench approximately 2 km. in length was excavated on the lower west side of the central ridge. The exploration trench was excavated to a depth of 4 to 6 feet deep intersecting frozen gravel through out approximately 95% of the over all length. The remaining 5% of trench exposed large jagged edged bedrock boulders locked in a frozen gravel-mud matrix.

PAN SAMPLING

Pan samples were taken at 100 m. intervals where gravel had thawed . Very fine gold and black sand was recovered from locations #6,8,9+10 (see fig. 2)

SOILS SAMPLING CENTRAL RIDGE

A one and one half inch iedleman auger was used to collected 65 soil samples at depths ranging from half a meter to a meter deep. Soils ranged in colour red , orange, yellow to grey.(see fig 3)

INTERPRETATION OF DATA COLLECTED 2000

The 2000 geochemical soils sampling program out lined another anomalous area approximately half a km. in length. Soils sampling carried out approximately 100 M. below and parallel to this line during a previous exploration program proved to be anomalous as well. At the time there was some concern that these geochem numbers may have been washed downstream from another gold arsenic antimony and bismuth anomaly located over the west spur ridge. The MJ2000 geochem soils line indicates that gold mineralisation occurs for 2 km. in a north south direction and over 2 km. on a south west trend on the DCK Block .The geochemistry seems to suggest that the east to west gold mineralisation is structurally related to the Heon showing situated on the Copper Ridge property a few km. to the south west. It is quite possible that this mineralised system runs south west for many km. possibly all the way to Sheelite dome.(see fig3,4+5)

The MK2000 samples line on top of the central ridge produced only a couple of slightly anomalous readings which suggests that the gold mineralisation does not extended to the surface on the north end of the ridge. The geochemical work that has been accomplished over the years has roughly out lined an area 2 square km. anomalous in gold arsenic antimony and bismuth.

Pan samples that were washed seem to confirm these geochem numbers, however, the gold that was recovered was almost microscopic. (see fig 2).

Many targets have not been examined from previous exploration . The 2 km x 2 km mineralisation that has been outlined by the soil geochemistry, leaves much exploration to be done in the future.

N

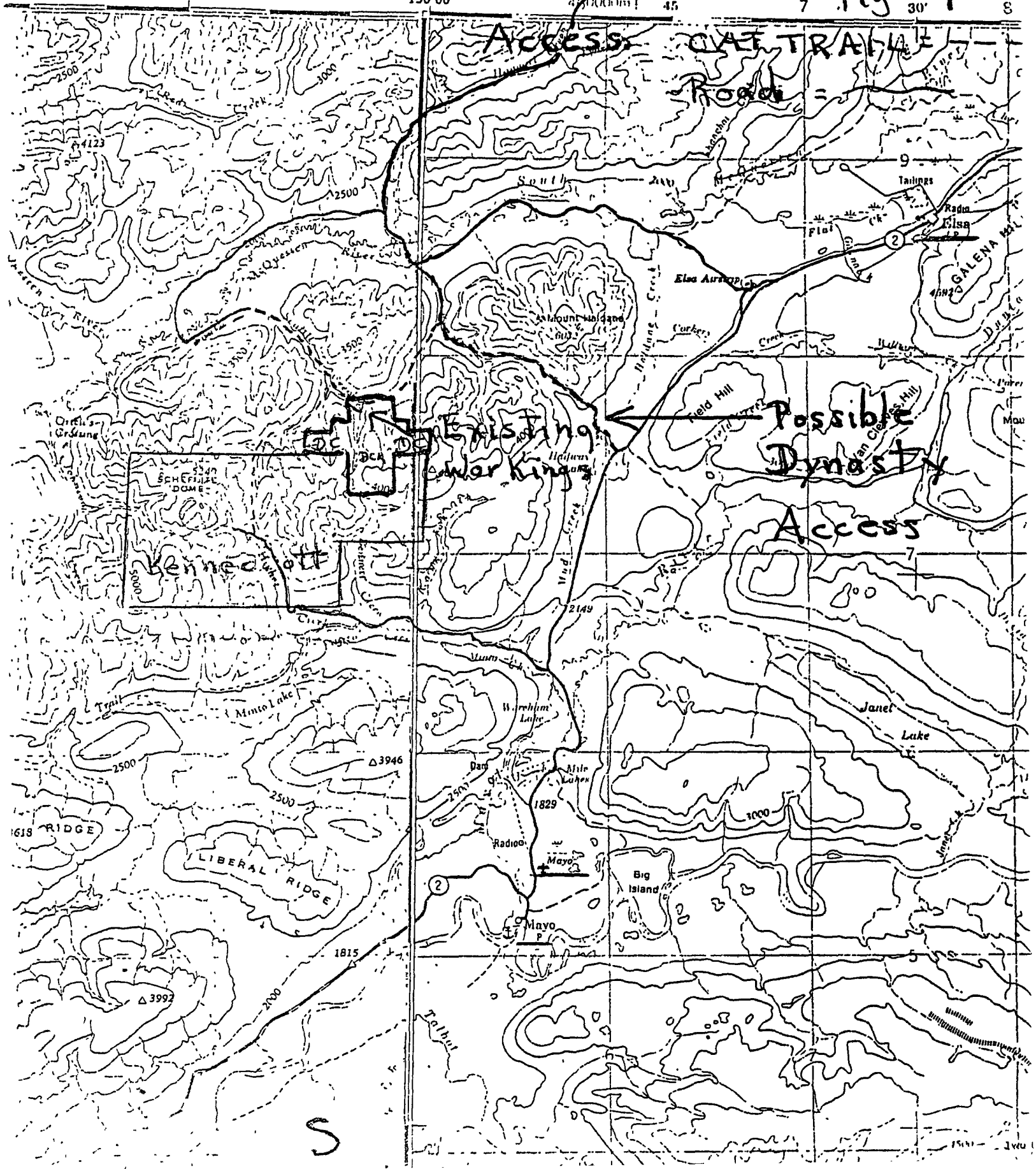
new millennium

dynasty



SECTION 3 Seattle Creek Workings

15' 1" 136°00' 45' 45' 7 Fig # 1 30' 1 8



S

N

Fig 2

Trenches

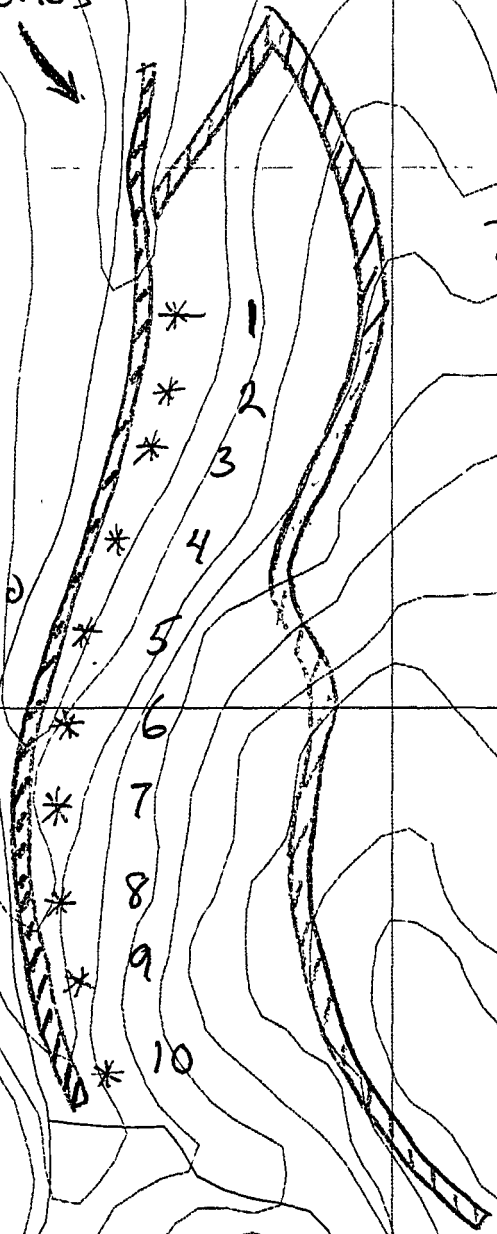


Panning Sites = *
in trench

All pans taken had
Black sand present
no hematite

Very
Very fine
gold discovered
pan ##

- # 6
- # 8
- # 9
- # 10



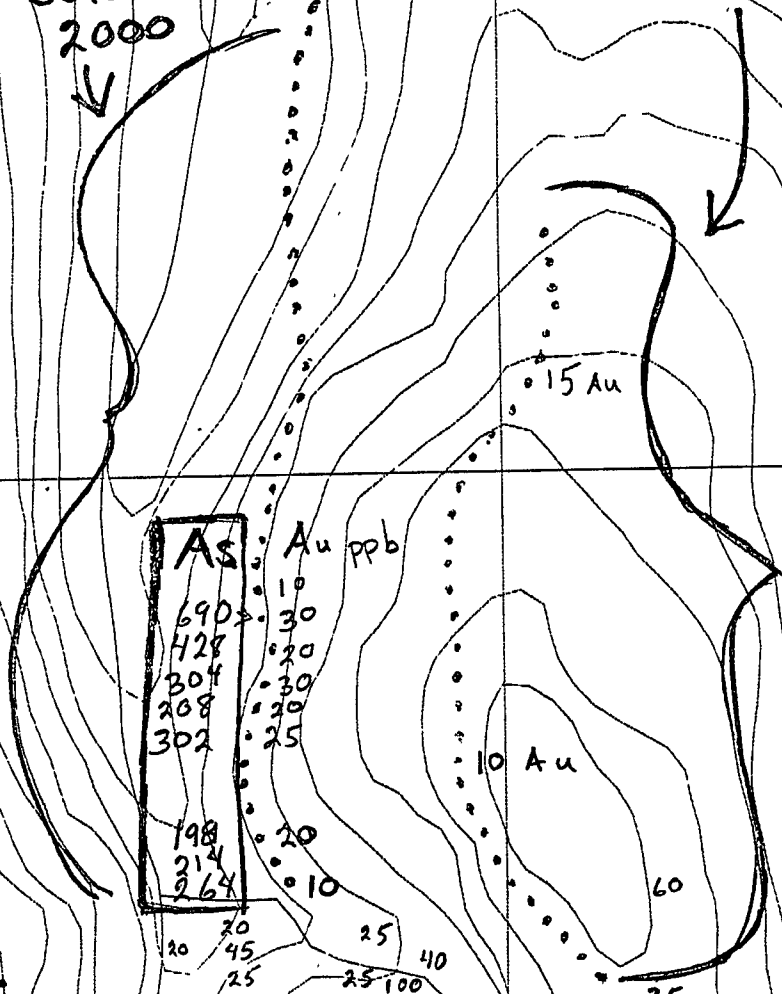
S

N.

Fig 3

M J
Seals line
2000

MK Seals line
2000



As	Au ppb
690	30
428	20
304	30
208	20
302	25
198	20
214	10
264	10

50 50 Au ppb
30 25
25
15
95
50
Prior to 2000

Au ppb

Prior to 2000

75 357
30 30
30 25
30 25
30 20
25

25 25 40

10 grams / ten
Rock sample
outside rich

S

N

Government Interpretation

Fig. 4

 = Anomaly

D.C.K.
Anomaly

Granite
Stocks

Granite
Stocks

CONTROL

Kennecott

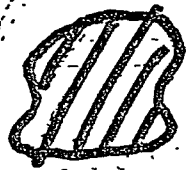
Copper Ridge

Anomalies

50

S

Fig 5

 = Anomaly

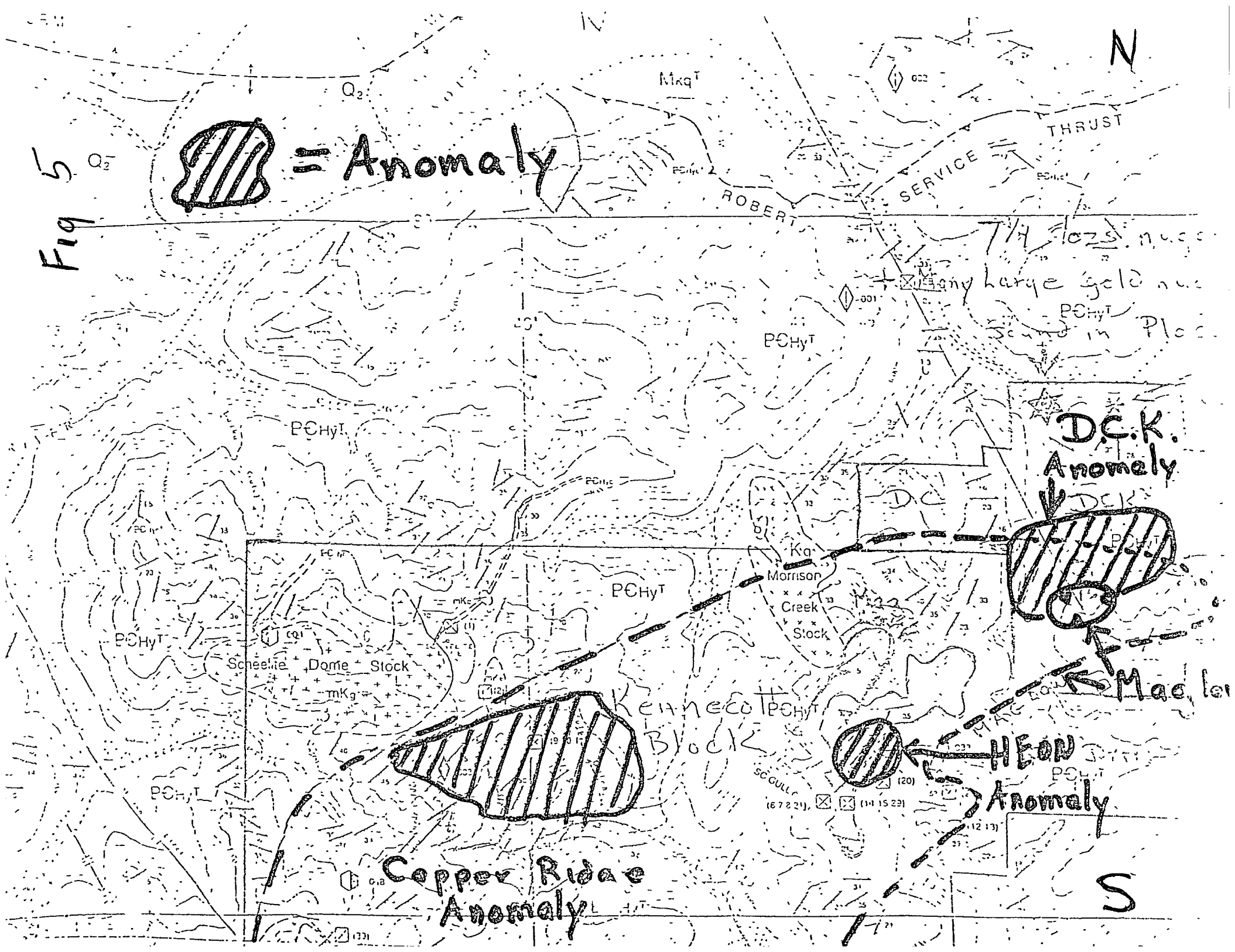
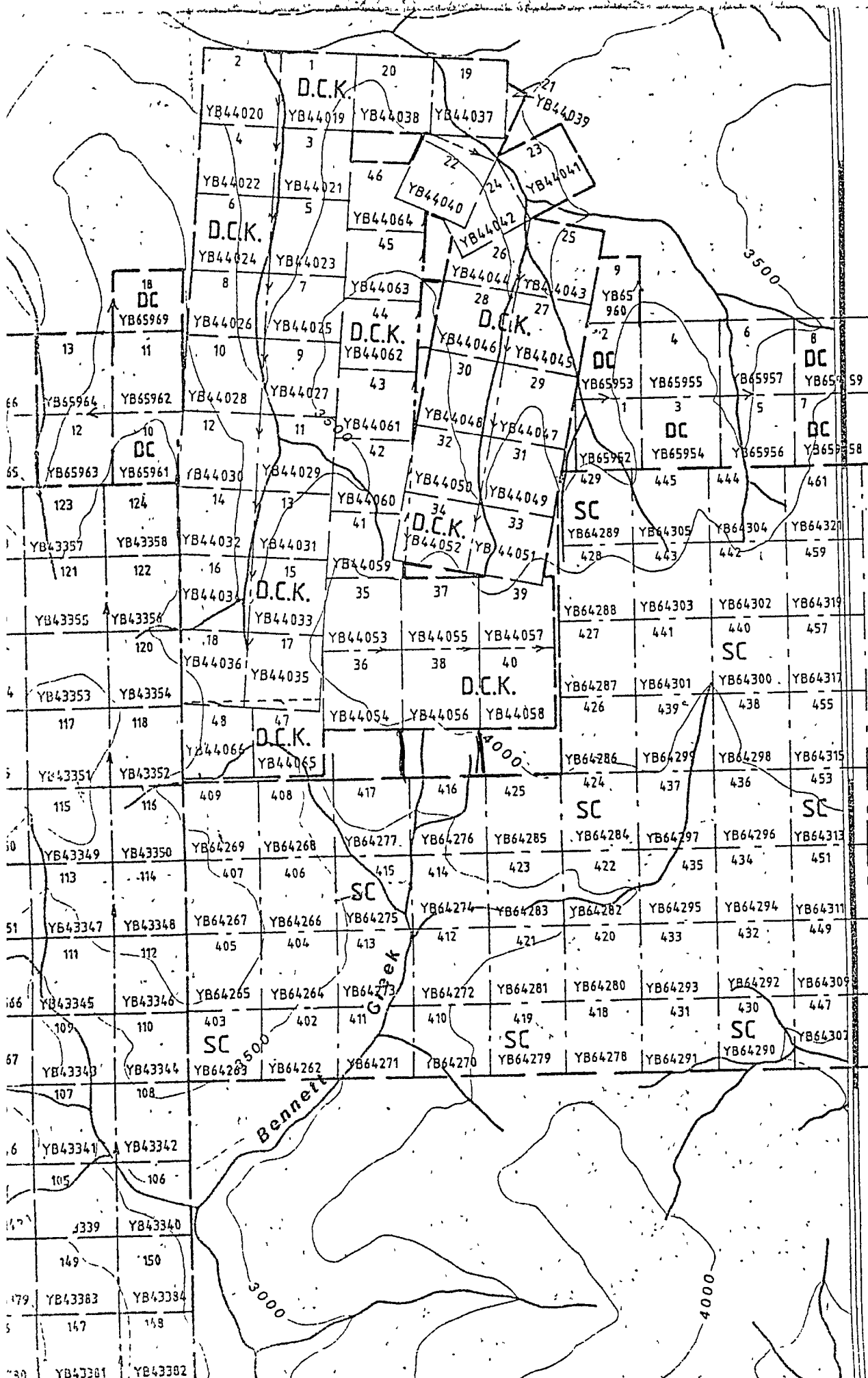
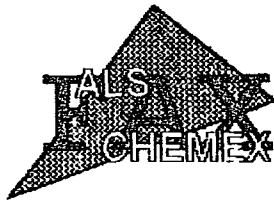


Fig 6
N



S



ALS Chemex

Aurora Laboratory Services Ltd
 Analytical Chemists * Geochemists * Registered Assayers
 212 Brooksbank Ave., North Vancouver
 British Columbia, Canada V7J 2C1
 PHONE: 604-984-0221 FAX: 604-984-0218

To DAN KLIPPERT EXPLORATION AND CONSTRUCTION

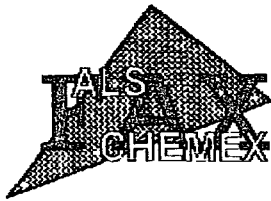
BOX 52
 MAYO, YT
 Y0B 1M0

Project :
 Comments: ATTN: DAN KLIPPERT

Page Number :2-A
 Total Pages :2
 Certificate Date:08-NOV-00
 Invoice No :10032473
 P O Number :
 Account : OEN

CERTIFICATE OF ANALYSIS A0032473

SAMPLE	PREP CODR	As ppb FA+AA	Ag ppm	Al %	As ppm	B ppm	Ba ppm	Be ppm	Bi ppm	Ca %	Cd ppm	Co ppm	Cr ppm	Cu ppm	Fe %	Ga ppm	Hg ppm	K %	La ppm	Mg %
MK 008-00	201 202	< 5	< 0.2	1.52	24	< 10	120	< 0.5	< 2	0.07	< 0.5	9	22	20	2.73	< 10	< 1	0.04	20	0.42
MK 009-00	201 202	< 5	0.2	1.97	224	< 10	80	< 0.5	< 2	0.10	< 0.5	21	24	13	4.46	< 10	< 1	0.05	40	0.79
MK 010-00	201 202	< 5	0.2	1.85	14	< 10	200	< 0.5	2	0.10	< 0.5	14	23	32	3.37	< 10	< 1	0.05	20	0.58
MK 011-00	201 202	10	0.6	0.97	114	< 10	400	0.5	< 2	0.25	< 0.5	33	67	42	6.27	< 10	< 1	0.10	10	0.60
MK 012-00	201 202	< 5	< 0.2	1.56	14	< 10	290	0.5	< 2	0.12	< 0.5	12	26	26	2.84	< 10	< 1	0.06	10	0.45
MK 013-00	201 202	< 5	< 0.2	1.89	20	< 10	260	0.5	< 2	0.12	< 0.5	10	34	24	3.42	< 10	< 1	0.06	10	0.51
MK 014-00	201 202	5	0.2	0.48	178	< 10	230	< 0.5	< 2	0.15	0.5	17	6	42	3.39	< 10	< 1	0.08	40	0.09
MK 015-00	201 202	< 5	< 0.2	0.86	22	< 10	6620	< 0.5	< 2	0.08	2.0	15	7	44	3.25	< 10	< 1	0.05	20	0.12
MK 016-00	201 202	< 5	< 0.2	1.35	8	< 10	430	< 0.5	< 2	0.19	< 0.5	12	24	29	2.80	< 10	< 1	0.06	10	0.45
MK 017-00	201 202	< 5	< 0.2	1.30	20	< 10	250	< 0.5	< 2	0.09	< 0.5	12	20	26	2.73	< 10	< 1	0.06	20	0.39
MK 018-00	201 202	< 5	< 0.2	1.42	70	< 10	220	< 0.5	< 2	0.17	< 0.5	14	39	29	3.01	< 10	< 1	0.05	10	0.56
MK 019-00	201 202	< 5	0.6	1.46	64	< 10	180	< 0.5	< 2	0.21	< 0.5	24	52	52	4.03	< 10	< 1	0.09	30	0.82
MK 020-00	201 202	< 5	< 0.2	1.39	8	< 10	380	0.5	< 2	0.20	0.5	18	25	42	3.37	< 10	< 1	0.06	20	0.53
MK 021-00	201 202	< 5	< 0.2	1.85	8	< 10	210	0.5	< 2	0.07	< 0.5	30	12	48	4.21	< 10	< 1	0.05	30	0.76
MK 022-00	201 202	< 5	0.2	1.53	8	< 10	100	< 0.5	< 2	0.07	< 0.5	15	26	25	3.04	< 10	< 1	0.05	10	0.42
MK 023-00	201 202	< 5	< 0.2	1.76	28	< 10	230	< 0.5	< 2	0.10	< 0.5	23	44	38	3.99	< 10	< 1	0.06	20	0.88
MK 024-00	201 202	< 5	< 0.2	1.74	14	< 10	360	0.5	< 2	0.12	< 0.5	20	27	62	3.77	< 10	< 1	0.04	30	0.66
MK 025-00	201 202	< 5	< 0.2	1.53	24	< 10	290	0.5	< 2	0.11	< 0.5	17	23	30	3.21	< 10	< 1	0.04	30	0.53
MK 026-00	201 202	15	< 0.2	1.16	20	< 10	280	< 0.5	< 2	0.18	< 0.5	11	19	25	2.46	< 10	< 1	0.04	10	0.34
MK 027-00	201 202	5	0.2	0.89	12	< 10	120	< 0.5	< 2	0.11	< 0.5	10	14	21	2.24	< 10	1	0.04	10	0.23
MK 028-00	201 202	5	< 0.2	1.26	18	< 10	130	< 0.5	< 2	0.13	< 0.5	10	27	22	2.68	< 10	< 1	0.03	10	0.48
MK 029-00	201 202	< 5	0.6	1.81	18	< 10	250	0.5	< 2	0.19	< 0.5	16	28	39	3.97	< 10	< 1	0.04	30	0.69
MK 030-00	201 202	< 5	0.2	3.21	60	< 10	110	< 0.5	< 2	0.15	< 0.5	43	163	56	5.77	< 10	< 1	0.04	10	2.30
MK 031-00	201 202	< 5	< 0.2	1.78	24	< 10	190	< 0.5	< 2	0.12	< 0.5	15	50	29	3.16	< 10	< 1	0.04	10	0.82
MK 032-00	201 202	< 5	< 0.2	1.33	20	< 10	220	< 0.5	< 2	0.18	< 0.5	11	26	27	2.75	< 10	< 1	0.05	20	0.44



ALS Chemex

Aurora Laboratory Services Ltd
 Analytical Chemists * Geochemists * Registered Assayers
 212 Brooksbank Ave., North Vancouver
 British Columbia, Canada V7J 2G1
 PHONE: 604-984-0221 FAX: 604-984-0218

To: DAN KLIPPERT EXPLORATION AND CONSTRUCTION

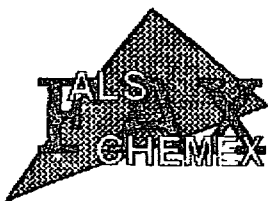
BOX 52
 MAYO, YT
 Y0B 1M0

Page Number 2-B
 Total Pages 2
 Certificate Date 06-NOV-02
 Invoice No. 10032473
 P.O Number
 Account :OEN

Project
 Comments: ATTN: DAN KLIPPERT

CERTIFICATE OF ANALYSIS A0032473

SAMPLE	PREP CODE	Nb ppm	Mo ppm	Na %	Ni ppm	P ppm	Pb ppm	S %	Sb ppm	Sc ppm	Sr ppm	Ti %	Tl ppm	U ppm	V ppm	W ppm	Zn ppm
MK 008-00	201 202	245	< 1	0.01	18	400	16 < 0.01	4	1	11	0.01	< 10	< 10	30	< 10		52
MK 009-00	201 202	645	< 1	0.01	45	530	32 < 0.01	6	1	8	< 0.01	< 10	< 10	16	10		104
MK 010-00	201 202	535	1	0.01	30	380	16 < 0.01	6	3	14	0.02	< 10	< 10	31	< 10		70
MK 011-00	201 202	2880	1	0.01	101	710	10 0.01	6	8	21	0.01	< 10	< 10	26	< 10		56
MK 012-00	201 202	460	1	0.01	25	460	12 < 0.01	8	4	16	0.04	< 10	< 10	37	< 10		66
MK 013-00	201 202	280	1	0.01	26	430	18 < 0.01	6	4	15	0.03	< 10	< 10	48	10		64
MK 014-00	201 202	600	< 1	0.01	44	410	54 < 0.01	4	2	10	< 0.01	20	< 10	7	< 10		108
MK 015-00	201 202	650	6	0.01	61	460	22 0.01	10	3	15	< 0.01	10	< 10	20	< 10		210
MK 016-00	201 202	545	1	0.01	29	550	14 < 0.01	12	4	19	0.03	< 10	< 10	35	< 10		64
MK 017-00	201 202	500	1	0.01	27	330	20 < 0.01	6	3	11	0.02	< 10	< 10	28	10		64
MK 018-00	201 202	390	< 1	0.01	40	360	30 < 0.01	12	3	17	0.02	< 10	< 10	30	< 10		64
MK 019-00	201 202	745	< 1	0.01	78	720	40 < 0.01	10	3	18	0.01	< 10	< 10	21	< 10		96
MK 020-00	201 202	1190	< 1	0.01	40	370	10 < 0.01	< 2	4	23	0.03	< 10	< 10	32	< 10		82
MK 021-00	201 202	1045	1	0.01	44	280	18 < 0.01	< 2	3	10	0.01	10	< 10	20	< 10		96
MK 022-00	201 202	500	< 1	0.01	28	360	16 0.01	8	1	10	0.02	< 10	< 10	34	< 10		62
MK 023-00	201 202	820	1	0.01	63	370	22 < 0.01	< 2	3	14	0.01	< 10	< 10	22	< 10		88
MK 024-00	201 202	675	< 1	0.01	37	340	12 < 0.01	4	4	17	0.04	< 10	< 10	34	10		88
MK 025-00	201 202	700	< 1	0.01	37	290	20 < 0.01	2	4	16	0.02	< 10	< 10	26	10		76
MK 026-00	201 202	370	< 1	0.01	21	430	6 < 0.01	8	3	16	0.03	< 10	< 10	30	10		56
MK 027-00	201 202	305	< 1	0.01	18	470	14 0.01	2	< 1	8	0.01	< 10	< 10	22	< 10		56
MK 028-00	201 202	355	< 1	0.01	30	430	16 < 0.01	2	2	13	0.02	< 10	< 10	25	< 10		62
MK 029-00	201 202	420	< 1	0.01	41	510	4 < 0.01	12	3	20	0.03	< 10	< 10	29	< 10		104
MK 030-00	201 202	1540	1	0.01	92	440	22 < 0.01	6	9	20	0.01	< 10	< 10	65	< 10		98
MK 031-00	201 202	590	< 1	0.01	38	310	12 < 0.01	10	5	15	0.03	< 10	< 10	43	< 10		66
MK 032-00	201 202	405	< 1	0.01	25	410	10 < 0.01	8	3	18	0.04	< 10	< 10	34	< 10		70



ALS Chemex
 Aurora Laboratory Services Ltd.
 Analytical Chemists * Geochemists * Registered Assayers
 212 Brooksbank Ave. North Vancouver
 British Columbia, Canada V7J 2C1
 PHONE: 604-984-0221 FAX: 604-984-0218

To: DAN KLIPPERT EXPLORATION AND CONSTRUCTION

BOX 52
 MAYO, YT
 Y0B 1M0

Page Number 1-A
 Total Pages 2
 Certificate Date 03-14
 Invoice No. 1003
 P.O. Number
 Account : OEN

Project:
 Comments: ATTN: DAN KLIPPERT

CERTIFICATE OF ANALYSIS A0032473

SAMPLE	PREP CODE	Au ppb FA+AA	Ag ppm	Al %	As ppm	B ppm	Ba ppm	Be ppm	Bi ppm	Ca %	Cd ppm	Co ppm	Cr ppm	Cu ppm	Fe %	Ga ppm	Hg ppm	K %	La ppm
NJ 001-00	201 202	10	4.2	1.99	264	10	140	0.5	8	0.92	< 0.5	24	167	72	4.38	< 10	< 1	0.19	10
NJ 002-00	201 202	< 5	1.4	1.13	214	10	130	0.5	2	0.26	< 0.5	20	55	42	4.20	< 10	< 1	0.11	20
NJ 003-00	201 202	20	0.4	2.13	198	< 10	110	< 0.5	6	0.77	< 0.5	19	96	96	3.70	< 10	< 1	0.16	10
NJ 004-00	201 202	< 5	0.6	1.51	134	< 10	60	< 0.5	4	0.16	< 0.5	19	40	56	4.80	< 10	< 1	0.10	30
NJ 005-00	201 202	< 5	0.4	1.19	168	< 10	200	< 0.5	< 2	0.18	< 0.5	13	26	33	3.25	< 10	< 1	0.09	20
NJ 006-00	201 202	5	3.8	0.81	140	< 10	90	< 0.5	< 2	0.02	< 0.5	4	9	21	2.05	< 10	< 1	0.06	20
NJ 007-00	201 202	25	1.4	0.70	302	< 10	70	< 0.5	< 2	0.03	< 0.5	7	13	29	2.56	< 10	< 1	0.06	20
NJ 008-00	201 202	20	0.6	1.46	208	10	130	0.5	6	0.44	< 0.5	17	65	47	3.69	< 10	< 1	0.13	20
NJ 009-00	201 202	30	0.8	1.55	304	< 10	130	0.5	< 2	0.82	< 0.5	18	48	48	3.73	< 10	< 1	0.12	20
NJ 010-00	201 202	20	1.4	0.73	428	< 10	80	< 0.5	< 2	0.44	1.0	13	15	34	3.09	< 10	< 1	0.12	30
NJ 011-00	201 202	30	0.8	1.37	690	< 10	240	0.5	6	0.40	< 0.5	13	25	27	3.05	< 10	< 1	0.09	30
NJ 012-00	201 202	10	0.6	1.27	168	< 10	220	< 0.5	< 2	0.46	< 0.5	13	38	33	3.03	< 10	< 1	0.09	10
NJ 013-00	201 202	< 5	< 0.2	1.10	42	< 10	240	< 0.5	< 2	0.34	< 0.5	10	23	21	2.27	< 10	< 1	0.05	10
NJ 014-00	201 202	< 5	0.2	1.19	118	< 10	140	< 0.5	6	0.21	< 0.5	11	27	24	2.91	< 10	< 1	0.07	30
NJ 015-00	201 202	5	0.2	1.04	90	< 10	80	< 0.5	< 2	0.06	< 0.5	17	16	27	3.74	< 10	< 1	0.08	20
NJ 016-00	201 202	< 5	2.0	0.80	252	< 10	90	< 0.5	2	0.10	< 0.5	15	13	25	3.17	< 10	< 1	0.07	10
NJ 017-00	201 202	10	< 0.2	1.64	198	< 10	170	< 0.5	4	0.32	< 0.5	18	84	30	3.59	< 10	< 1	0.06	10
NJ 018-00	201 202	< 5	0.2	1.10	60	< 10	100	< 0.5	< 2	0.07	< 0.5	8	19	18	2.44	< 10	< 1	0.05	10
NJ 019-00	201 202	< 5	0.2	1.46	78	< 10	180	< 0.5	2	0.35	< 0.5	15	51	28	3.39	< 10	< 1	0.06	10
NJ 020-00	201 202	< 5	< 0.2	1.51	44	< 10	140	< 0.5	2	0.19	< 0.5	15	39	29	3.48	< 10	< 1	0.05	10
NJ 021-00	201 202	< 5	< 0.2	1.51	24	< 10	110	< 0.5	6	0.07	< 0.5	15	22	32	3.34	< 10	< 1	0.06	10
NJ 022-00	201 202	25	< 0.2	1.33	18	< 10	110	< 0.5	2	0.16	< 0.5	13	21	29	3.23	< 10	< 1	0.05	20
NJ 023-00	201 202	< 5	< 0.2	1.23	26	< 10	190	< 0.5	2	0.31	< 0.5	14	32	26	2.90	< 10	< 1	0.05	10
NJ 024-00	201 202	< 5	< 0.2	1.42	16	< 10	140	< 0.5	2	0.15	< 0.5	12	20	28	3.25	< 10	< 1	0.04	10
NJ 025-00	201 202	< 5	< 0.2	1.32	22	< 10	140	< 0.5	< 2	0.13	< 0.5	12	17	28	3.10	< 10	< 1	0.04	10
NJ 026-00	201 202	< 5	< 0.2	1.50	14	< 10	70	< 0.5	< 2	0.12	< 0.5	16	20	31	3.72	< 10	< 1	0.04	30
NJ 027-00	201 202	< 5	< 0.2	1.10	24	< 10	150	< 0.5	4	0.27	< 0.5	13	17	19	2.93	< 10	< 1	0.05	10
NJ 028-00	201 202	< 5	< 0.2	1.39	18	< 10	140	< 0.5	< 2	0.12	< 0.5	13	22	20	3.04	< 10	< 1	0.04	10
NJ 029-00	201 202	< 5	< 0.2	1.92	32	< 10	120	< 0.5	< 2	0.17	< 0.5	15	24	35	3.66	< 10	< 1	0.04	30
NJ 030-00	201 202	5	< 0.2	1.14	22	< 10	190	< 0.5	< 2	0.27	< 0.5	12	18	24	2.53	< 10	< 1	0.04	10
NJ 031-00	201 202	< 5	< 0.2	1.09	38	< 10	120	< 0.5	< 2	0.33	0.5	13	16	27	3.10	< 10	< 1	0.05	10
NJ 032-00	201 202	5	0.6	1.05	34	< 10	140	< 0.5	< 2	0.16	0.5	16	14	25	3.01	< 10	< 1	0.05	10
NJ 033-00	201 202	< 5	< 0.2	1.13	34	< 10	160	< 0.5	< 2	0.20	< 0.5	13	23	24	2.87	< 10	< 1	0.05	10
MK 001-00	201 202	< 5	< 0.2	0.38	6	< 10	110	0.5	< 2	0.17	< 0.5	13	8	22	3.08	< 10	< 1	0.06	50
MK 002-00	201 202	< 5	0.2	1.34	26	< 10	220	0.5	< 2	0.58	< 0.5	12	18	26	2.84	< 10	< 1	0.05	20
MK 003-00	201 202	< 5	< 0.2	1.15	22	< 10	140	< 0.5	< 2	0.12	< 0.5	13	18	25	3.19	< 10	< 1	0.06	30
MK 004-00	201 202	< 5	< 0.2	1.10	26	< 10	190	< 0.5	< 2	0.08	< 0.5	16	18	26	3.39	< 10	< 1	0.06	30
MK 005-00	201 202	5	< 0.2	1.91	52	< 10	120	0.5	< 2	0.18	< 0.5	17	24	39	3.92	< 10	< 1	0.05	10
MK 006-00	201 202	5	< 0.2	2.01	164	< 10	180	0.5	< 2	0.07	< 0.5	25	20	40	4.56	< 10	< 1	0.06	30
MK 007-00	201 202	< 5	< 0.2	1.72	44	< 10	130	0.5	< 2	0.05	< 0.5	15	23	33	3.40	< 10	< 1	0.04	30

CERTIFICATION

ALS Chemex

Aurora Laboratory Services Ltd.

Analytical Chemists * Geochemists * Registered Assayers

212 Brooksbank Ave. North Vancouver
 British Columbia, Canada V7J 2C1
 PHONE 604-984-0221 FAX 604-984-0218

To: DAN KLIPPERT EXPLORATION AND CONSTRUCTION *

BOX 52
 MAYO, YT
 Y0B 1M0

Page Number : 1-B
 Total Pages 2
 Certificate Date 06-NOV-00
 Invoice No 10032473
 P. O. Number
 Account OEN

Project
 Comments: ATTN: DAN KLIPPERT

CERTIFICATE OF ANALYSIS A0032473

SAMPLE	PREP CODE	Mn ppm	Mo ppm	Na %	Ki ppm	P ppm	Pb ppm	S %	Sb ppm	Sc ppm	Sr ppm	Ti %	Tl ppm	U ppm	V ppm	W ppm	Zn ppm
MJ 001-00	201 202	720	< 1	0.01	122	640	58	0.04	16	5	60	0.04	< 10	< 10	44	< 10	104
MJ 002-00	201 202	715	1	0.01	60	420	56	0.01	14	4	19	< 0.01	< 10	< 10	23	< 10	128
MJ 003-00	201 202	510	1	0.01	93	290	16	0.01	8	4	29	0.08	< 10	< 10	48	< 10	104
MJ 004-00	201 202	535	1	0.01	66	370	20	0.01	6	2	14	0.01	< 10	< 10	22	< 10	112
MJ 005-00	201 202	525	< 1	0.01	33	450	20	0.03	4	2	20	0.01	< 10	< 10	24	< 10	88
MJ 006-00	201 202	120	1	0.01	12	280	128	0.03	2	1	12	< 0.01	< 10	< 10	19	< 10	74
MJ 007-00	201 202	180	< 1	0.01	19	300	34	0.03	2	1	18	< 0.01	< 10	< 10	17	< 10	60
MJ 008-00	201 202	565	1	0.01	63	620	26	0.01	4	3	31	0.01	< 10	< 10	24	< 10	96
MJ 009-00	201 202	775	< 1	0.01	55	560	30	0.03	2	3	41	0.01	10	< 10	25	< 10	104
MJ 010-00	201 202	395	< 1	0.01	28	410	120	0.07	6	2	45	< 0.01	10	< 10	9	< 10	148
MJ 011-00	201 202	620	< 1	0.01	32	320	36	0.01	< 2	3	23	0.01	< 10	< 10	25	< 10	78
MJ 012-00	201 202	390	< 1	0.01	40	590	18	0.01	2	4	32	0.01	< 10	< 10	31	< 10	88
MJ 013-00	201 202	410	< 1	0.01	24	450	10	0.02	< 2	2	25	0.01	< 10	< 10	25	< 10	72
MJ 014-00	201 202	470	< 1	0.01	30	410	20	< 0.01	< 2	2	19	< 0.01	< 10	< 10	21	< 10	76
MJ 015-00	201 202	665	< 1	0.01	31	350	20	0.01	2	1	11	0.01	< 10	< 10	18	< 10	92
MJ 016-00	201 202	640	< 1	0.01	28	420	54	0.01	4	1	15	< 0.01	< 10	< 10	16	< 10	88
MJ 017-00	201 202	540	1	0.01	85	470	30	0.01	6	4	24	0.01	< 10	< 10	28	< 10	88
MJ 018-00	201 202	370	1	0.01	19	470	20	0.03	2	1	18	0.01	< 10	< 10	25	< 10	58
MJ 019-00	201 202	560	< 1	0.01	48	460	36	0.01	2	3	24	0.01	< 10	< 10	26	< 10	80
MJ 020-00	201 202	530	< 1	0.01	50	410	22	< 0.01	4	3	16	0.01	< 10	< 10	24	< 10	80
MJ 021-00	201 202	535	< 1	0.01	31	350	22	< 0.01	2	1	10	0.01	< 10	< 10	23	< 10	78
MJ 022-00	201 202	495	< 1	0.01	31	450	16	0.01	2	1	14	0.01	< 10	< 10	21	< 10	78
MJ 023-00	201 202	625	1	0.01	38	480	20	0.01	4	3	25	0.01	< 10	< 10	23	< 10	76
MJ 024-00	201 202	505	1	0.01	29	460	18	0.01	6	1	15	0.01	< 10	< 10	23	< 10	74
MJ 025-00	201 202	420	< 1	0.01	27	450	20	0.01	4	1	14	0.01	< 10	< 10	20	< 10	72
MJ 026-00	201 202	490	< 1	0.01	35	380	14	< 0.01	2	1	12	0.01	< 10	< 10	18	< 10	88
MJ 027-00	201 202	740	1	0.01	26	440	20	0.01	2	1	20	0.01	< 10	< 10	20	< 10	70
MJ 028-00	201 202	505	1	0.01	27	420	18	0.01	2	1	12	< 0.01	< 10	< 10	23	< 10	68
MJ 029-00	201 202	615	< 1	0.01	33	400	18	0.01	2	2	14	< 0.01	< 10	< 10	21	< 10	84
MJ 030-00	201 202	355	1	0.01	25	510	10	0.01	2	2	18	0.01	< 10	< 10	21	10	66
MJ 031-00	201 202	420	1	0.01	29	360	36	0.01	2	2	12	< 0.01	< 10	< 10	16	10	100
MJ 032-00	201 202	820	< 1	0.01	29	480	36	0.01	2	2	12	< 0.01	< 10	< 10	15	< 10	104
MJ 033-00	201 202	450	< 1	0.01	30	450	22	0.01	8	2	12	< 0.01	< 10	< 10	20	< 10	74
ME 001-00	201 202	650	< 1	< 0.01	25	390	20	< 0.01	< 2	3	19	< 0.01	10	< 10	10	< 10	74
ME 002-00	201 202	380	1	0.01	26	530	18	0.01	8	3	30	0.01	< 10	< 10	31	< 10	62
ME 003-00	201 202	425	< 1	0.01	26	300	22	< 0.01	10	2	15	0.01	< 10	< 10	25	< 10	72
ME 004-00	201 202	535	< 1	0.01	31	270	8	< 0.01	10	3	12	0.01	10	< 10	23	< 10	78
ME 005-00	201 202	545	3	0.01	28	440	12	0.04	< 2	2	14	0.01	< 10	< 10	30	< 10	72
ME 006-00	201 202	950	< 1	0.01	43	220	20	< 0.01	< 2	3	11	0.01	< 10	< 10	18	< 10	114
ME 007-00	201 202	415	< 1	0.01	28	240	20	< 0.01	2	3	10	0.02	10	< 10	28	< 10	68

CERTIFICATION

11/26/00 11:56:00 66/90/11


Nov. 7 '00 9:56

Dan Klippert Exploration

FAX 14039962377

D.C. Klippert FXPI.

Box 52 Mayo, Yukon Y0B1M0

OUR NUMBER	084176
DATE	Oct 31 2000
CUSTOMER'S ORDER	
SALESMAN	
TERMS	
F.O.B.	

SOLD TO Y.M.I.P. Economic Development
 Whitehorse Yukon

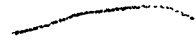
SHIPPED TO _____

ADDRESS _____ VIA _____

INVOICE

	D.C.K. Target Trenching	Hardrock	FX
	Headwater Seattle cr		
80			\$ 15 200
120	hrs @ \$190 ⁰⁰	D8K	22 800
90	hrs @ \$240 ⁰⁰	D9H	\$ 21 600 ⁰⁰
		Total	\$ 44 400⁰⁰
		Reduce by	36 800
		Kon Galambos	

REDIFORM - 7M31



Mobilization

3800
~~3800~~
 7600

24000
~~24000~~
 Hr.

19000
~~19000~~
 Hr.

D9H D8K

Apr. 14	snow removal			10	
15	"			10	
17	"			10	
18	"			10	

Aug 28	Trenching	Area A		10	10
29	"	"	"	10	10
31	Retrench	Area e		10	

Oct 12	Trenching	Area A		10	10
13				10	10
16				10	10
17	Trenching	Area B		10	10
18				10	10
19				10	10

44,900
~~7,600~~
 36,800

KEN
 90hrs 120hrs

21600	22800
	21300
	44900

