

Report
On
Little Blanche Creek
2001 Exploration Program

NTS 115-O-14

For
Y.M.I.P.

By
Bernie Kreft

September 6, 2001

2001 - 047

YUKON ENERGY, MINES
& RESOURCES LIBRARY
PO Box 2703
Whitehorse, Yukon Y1A 2C6

Project Location – Little Blanche Creek is located at 139°10' W/63°50' N, on NTS map 115-O-14 in central Yukon Territory, approximately 30km SSE of Dawson City. The property consists of 15 contiguous placer claims (Oro 28-42; P10445-P10459) located within the Dawson Mining District.

Access – Access was achieved by truck from Dawson City, via the Bonanza Creek road and the Victoria Gulch road. Total distance one-way is approximately 34 kilometres with a travel time of about 1.0 hour.

Work Program – Exploration work consisted of surficial mapping, followed by a 17-hole, 537-foot auger drill program.

Surficial mapping (1:1000) was accomplished by ground traversing, with all distances measured by hip-chain. All traverses were made perpendicular to the creek flow at spacings of between 80 metres and 120 metres. All points of interest were tied into the nearest perpendicular line. The mapping covered the lower 13 claims and took 2 trips totaling 8 days to complete.

Auger drilling was completed using a Nodwell mounted 6" auger drill owned and operated by Sylvain Fleurant of Dawson City. The drilling was located on claims P10452, P10447-P10449 and took one trip totaling 6 days to complete.

Results – Mapping located 4 shafts and two old cabins (1898 era) along with a more recent shaft, camp and an area of bulldozer stripping. It also showed that on the majority of the property (lower 12 claims) there are no topographical features which would hinder a/o prevent placer gold mining. The lack of extensive old-timer workings on the property is undoubtedly due to low water flow in the creek which would have prevented hydraulicking a/o ground-sluicing, as well as the thickness of black muck which would have prevented open cut mining. The upper 3 claims of the property are narrow enough to preclude mechanized placer mining; these claims were not mapped for that reason.

Auger drilling consisted of 14 holes in 3 lines cutting across the valley, along with one short line of 3 holes between the right limit of the valley and a large elevated area in the centre of the valley. All 3 lines encountered at least one intersection with economic gold grades. The short line along the right limit encountered no measurable gold, even though all previous drilling to that point had seemed to indicate that the "pay" followed the right limit bank.

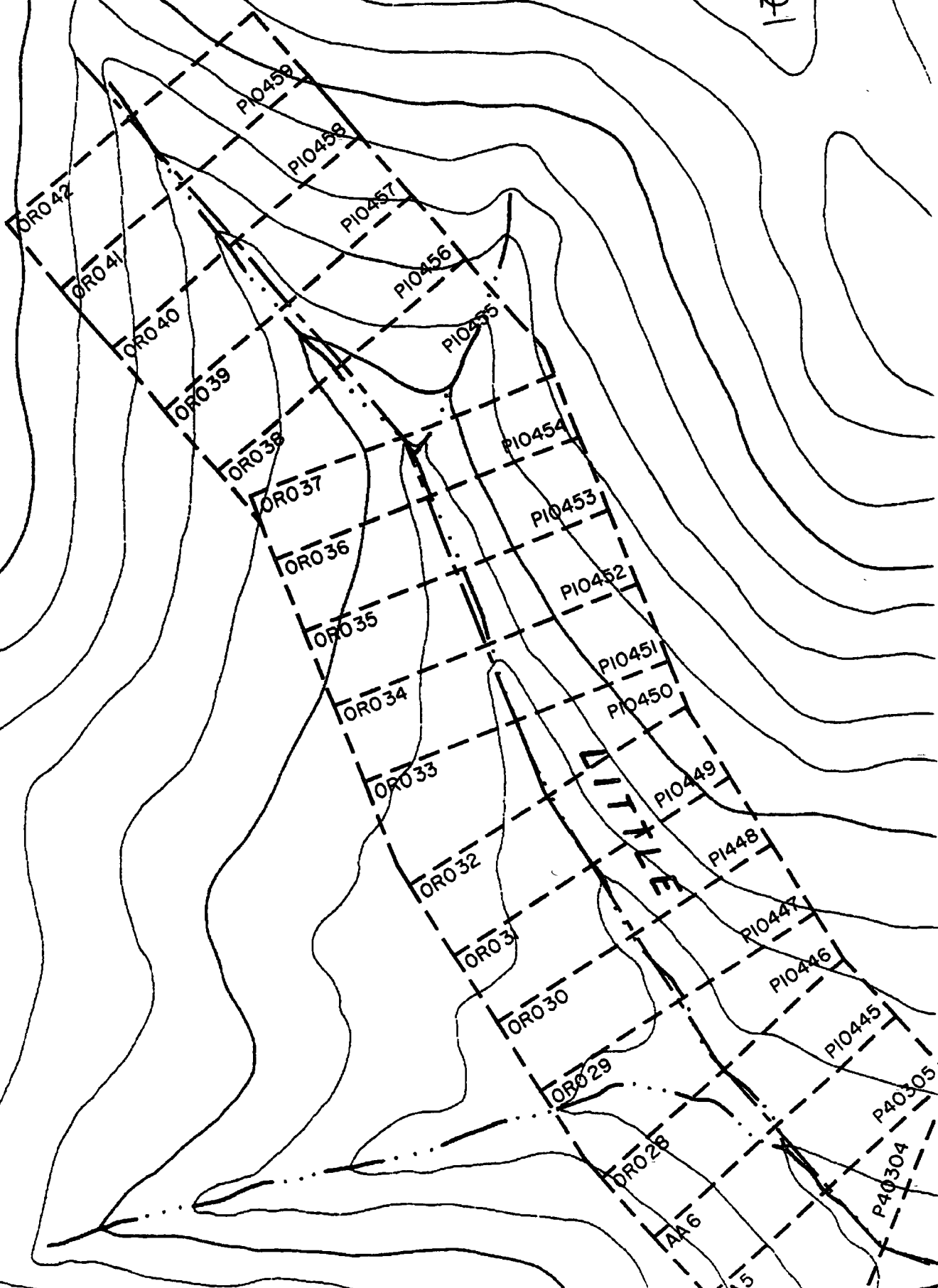
Conclusions – Gold grades sufficient for economic mining have been returned from auger drilling of a creek where ground conditions such as valley width and gradient are favourable for mining. Low water flow (>200 igpm) is the likely reason for the lack of extensive old-timer workings in the Little Blanche Creek valley.

Recommendations – Further work is recommended and should consist of bulk-sampling (100 cubic yard sample) in the vicinity of one of the higher-grade auger drill holes. A bulk sample is absolutely necessary to get an accurate grade determination of a placer deposit. The bulk sample results will be compared too, and be used to help calibrate the values encountered in, the remaining auger drill holes.

3400

115-0-14 F

121



PLACER DRILL LOG

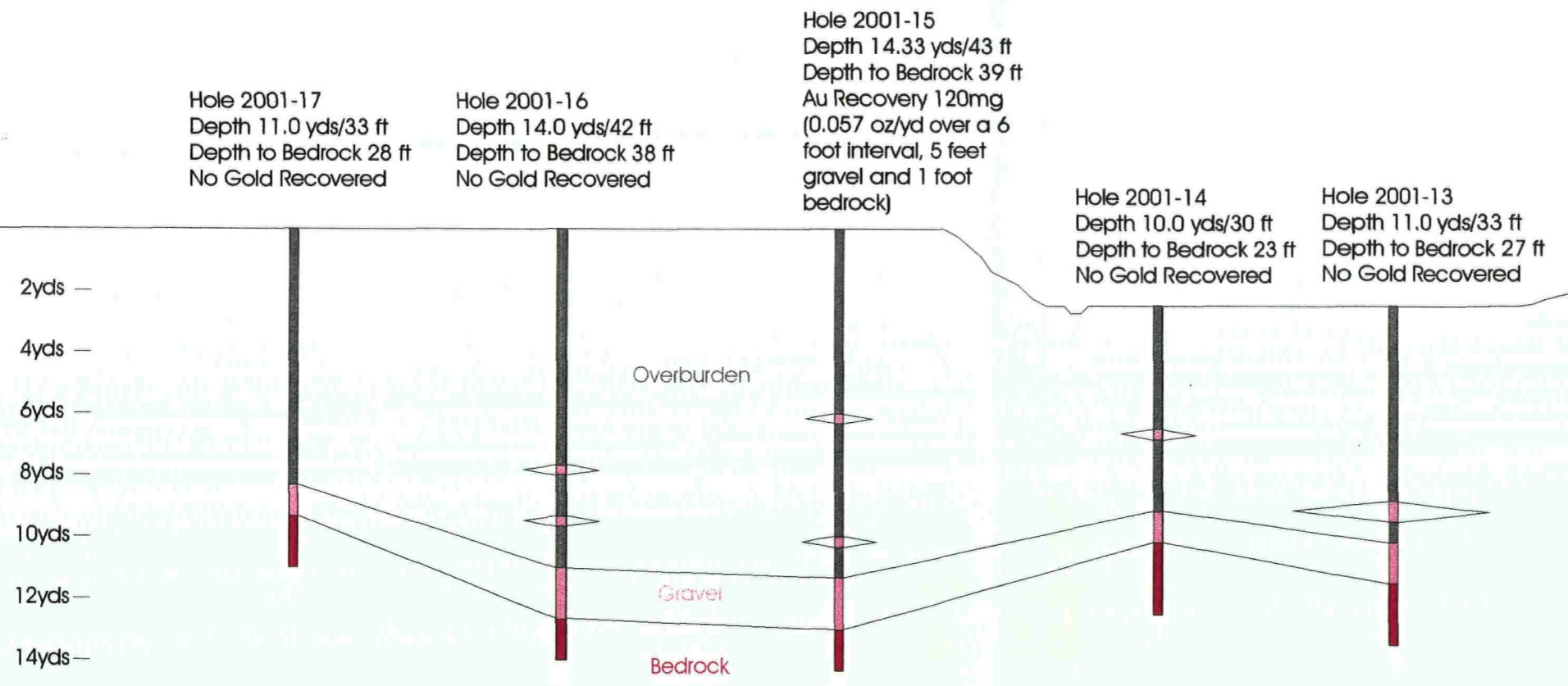
Date: 6-Jul-01		Time:		Driller: Sylvain Fleurant		Helper:	
Type of Drill: auger				Inside Diameter of Drill: 6inch			
Location: Little Blanche				Lease or Grant Numbers:			
Drill Hole Number	Total Footage	Breakdown IN Feet (of materials encounterd)			Remarks: samples/results		
1	32	19ft muck 3ft gravel 2ft broken bedrock 8ft bedrock					
2	35	15ft muck 1gravel bolder 2muck gravel 1soft bedrock 4muck 5broken bedrock					
		7bedrock medium hard					
3	27	3ft frozen muck 8ft thawed muck 8ft frozen muck 5ft gravel 3ft bedrock					
		lot of water from the top					
4	35	14ft muck 1ft gravel 1ft muck 4ft gravel 3ft broken bedrock 7ft gravel 5ft bedrock					
(line2) 5	27	14ft muck 9ft gravel 4ft bedrock					
6	28	7ft thawed muck 6ft frozen muck 10ft gravel 5ft bedrock					
7	33	8ft muck thawed 4ft frozen muck 1ft muck gravel 4ft gravel 1ft muck 9ft fine					
		gravel muck 1ft broken bedrock 5 bedrock					
8	38	16ft muck 2ft gravel 3ft sand muck 2ft ice 2ft water 3ft sand 10ft bedrock soft					
		lot of water sample not good					
9	27	21ft muck 2ft ice 4ft gravel sample no good to much water					
		Date: 6-Jul-01		Signed (Driller or Representative)		<i>Sylvain Fleurant</i>	

PLACER DRILL LOG

Date: 8-Jul-01		Time:	Driller: Sylvain Fleurant	Helper:
Type of Drill: auger			Inside Diameter of Drill: 6 inch	
Location: Litle Blanche		Lease or Grant Numbers:		
Drill Hole Number	Total Footage	Breakdown IN Feet (of materials encounterd)	Remarks: samples/results	
3line 10	18	3ft muck 5ftmuck gravel 5ftbroken bedrock 5ft bedrock	medium hard	
11	28	8ft thawed muck 13ft gravel 2ft broken bedrock 5ft bedrock	medium hard	
12	28	20ft muck 4ft gravel 4ft bedrock	medium hard	
4line 13	33	19ftmuck 2ft gravel 2ft muck4ftgravel 6ft bedrock	medium hard	
14	30	12ft muck 1ft gravel 7ftmuck 3ft broken bedrock 5ft bedrock	medium hard	
		litle water from the top		
15	43	18ftmuck 1ft gravel 11ft muck 1ft gravel 3ft muck 2ft gravel 3ft soft bedrock		
		4ft bedrock	medium hard	
16	42	23ft muck 1ft gravel 4ft muck 1ft gravel 4ft muck 5ft gravel 4ft bedrock	medium hard	
17	33	25ft muck 3ft gravel 5ft bedrock	medium hard	
Date: 8-Jul-01 Signed (Driller or Representative) <i>Sylvain Fleurant</i>				

SW

NE

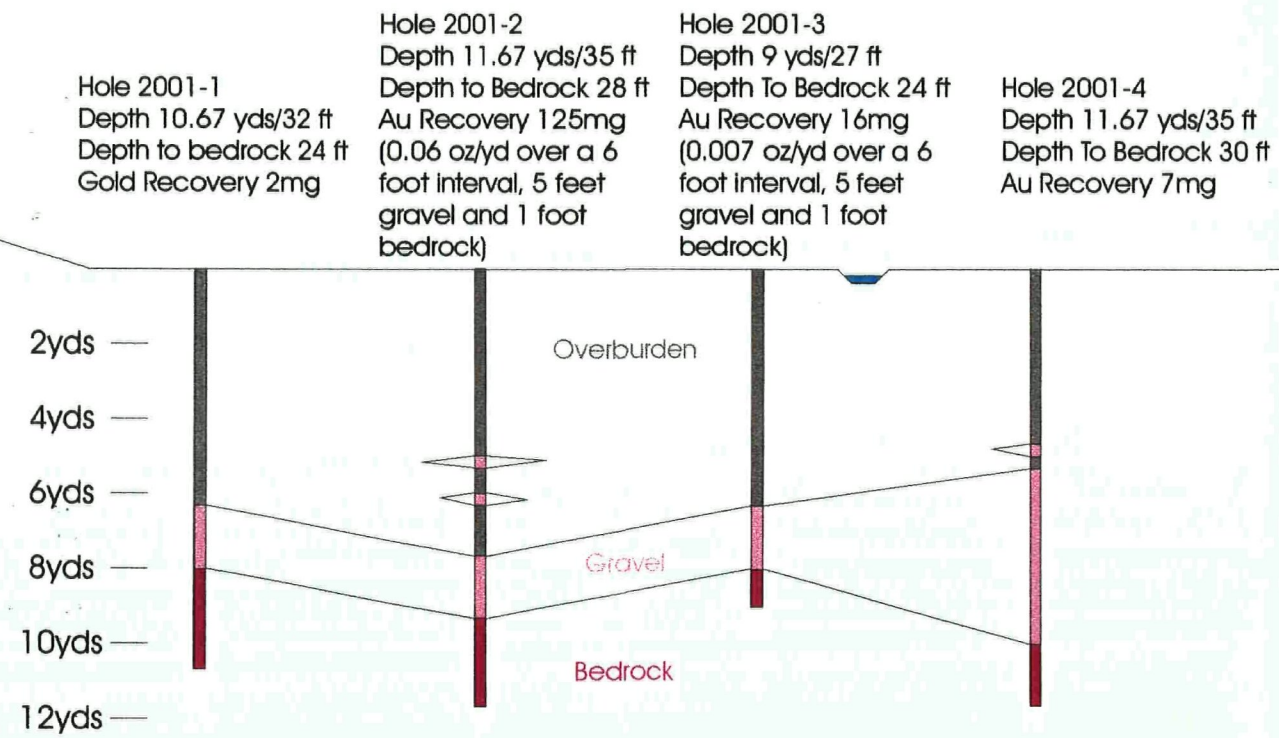


(View Looking Upstream)

Placer Drilling On Little Blanche Creek
 Cross-Section Of Line #4
 Claim P10452
 Nodwell Mounted 6inch Auger Drill
 July 2001 1cm=2yds
 0yds 2yds 4yds 6yds 8yds 10yds

SW

NE



Placer Drilling On Little Blanche Creek
 Cross-Section Of Line #1
 Claim P10447
 Nodwell Mounted 6inch Auger Drill
 July 2001 1cm=2yds

0yds 2yds 4yds 6yds 8yds 10yds

SW

NE

Hole 2001-9 Depth 9.0 yds/27 ft Bedrock not reached	Hole 2001-8 Depth 12.67 yds/38 ft Depth to Bedrock 36 ft No Gold Recovered	Hole 2001-7 Depth 11.0 yds/33 ft Depth to Bedrock 28 ft Au Recovery 15mg	Hole 2001-6 Depth 9.33 yds/28 ft Depth to Bedrock 23 ft Au Recovery 10mg	Hole 2001-5 Depth 9.0 yds/27 ft Depth to Bedrock 23 ft Au Recovery 2mg
---	---	---	---	---

2yds —
4yds —
6yds —
8yds —
10yds —
12yds —
14yds —
16yds —

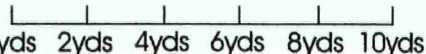
Overburden

Gravel

Bedrock

(View Looking Upstream)

Placer Drilling On Little Blanche Creek
Cross-Section Of Line #2
Claim P10448
Nodwell Mounted 6inch Auger Drill
July 2001 1cm=2yds



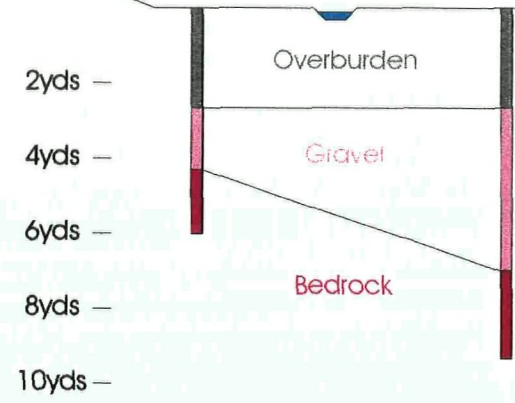
0yds 2yds 4yds 6yds 8yds 10yds

SW

NE

YUKON ENERGY, MINES
& RESOURCES LIBRARY
P.O. Box 2703
Whitehorse, Yukon Y1A 2C8

Hole 2001-10	Hole 2001-11
Total Depth 6.0 yds/18 ft	Total Depth 9.33 yds/28 ft
Depth To Bedrock 13 ft	Depth To Bedrock 23 ft
No Gold Recovered	Au Recovery 2mg

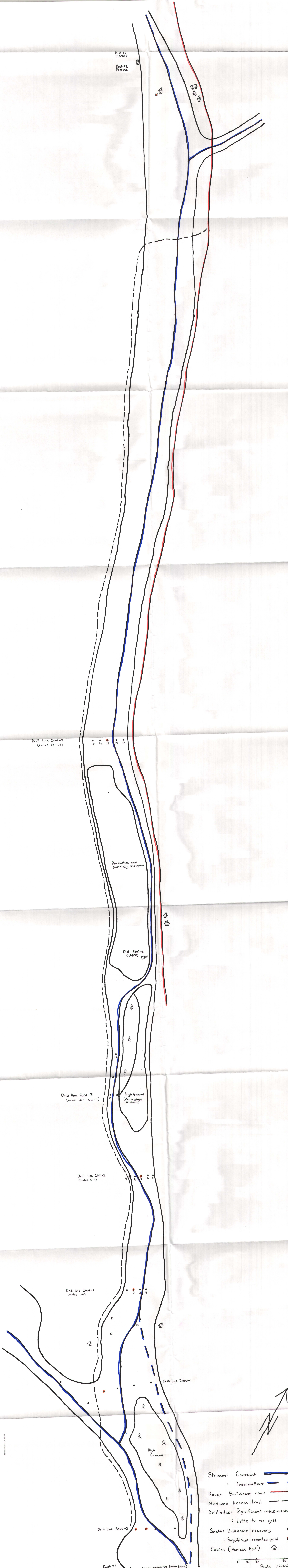


(View Looking Upstream)

YUKON ENERGY, MINES
& RESOURCES LIBRARY
P.O. Box 2703
Whitehorse, Yukon Y1A 2C8

Placer Drilling On Little Blanche Creek
Cross Section Of Line #3
Claim P10448
Nodwell Mounted 6inch Auger Drill
July 2001 1cm=2yds

0yds 2yds 4yds 6yds 8yds 10yds



Stream: Constant
 : Intermittent
 Rough Bulldozer road
 Nadwell Access trail
 Drillholes: Significant measurable gold
 : Little to no gold
 Shaft: Unknown recovery
 : Significant reported gold
 Cabins (Various Eras)

0 10 20 30 40 50 60 70 80
 Scale 1:1000

YUKON ENERGY, MINES & RESOURCES LIBRARY
 PO Box 2708
 Whitehorse, Yukon Y1A 2C8