

**YEIP  
2004  
-020**

**A Report on the 2004  
Prospecting Season**

**by: Eugene Curley**

YMIP 04-020

# Summary

Target #1

The 2004 Prospecting Season began on June 17 with a visit to the Dawson area and Indian R - Sulphur and Dominion Creek as well as Australia and Wounded Moose CK.

The Roadside from Indian R Bridge to Dominion Creek was examined for Geology type and any veining was examined for approx 6 Km along the north side of Indian R. All float was examined for Chalcopyrite and copper stain. Various veins cut the shists which range from light grey shists to mafic. Veining widths range from 1" to 18" - no copper mineralization was found. The topography along this area consists of steep hillsides with pine, Poplar, willow, spruce along the higher levels which are open with reasonable visibility. The lower levels along the river are much thicker and hard to walk through. Scattered Rock pieces protrude from the hillsides as mass covering is not deep in the more open areas, which allows you to determine the rock types in the area.

The South side of Indian R. from the Bridge to Dominion Creek was examined for Geology and outcrop. Outcrop is rare and the only bedrock visible was along the river Banks where placer miners dug to bedrock.

This Bedrock is mostly light grey schists with scattered small veinlets and only Pyrite mineralization. The hillsides above the valley (north facing) are covered by heavy moss and Permafrost exists below the moss. Some Rock Pieces can be found where cats hone and are mostly schists with occasional Granitic Rocks. A large Placer cut near Wounded Moose Cr. was examined. The cut was hundreds of feet long and had approx a 20' wall. Very little mineralization occurred in this cut which was very disappointing. The Rocks in the cut were assorted metasediments & Granite Rocks. Australia Creek contains much different rocks than Indian R. a high proportion of Granite rocks and much less metasediments.

From Australia Creek to Dominion Cr the sidehills are also covered by deep moss and no outcrop.

All the tailing piles from Dominion and Sulphur Crs and Indian R.

were examined in a general way. Sampling of the tailings was limited to mineralized silica rocks.

10 samples were submitted for assay.

Samples were concentrated around the area where High Grade Copper float was found.

Sample locations are plotted on the attached map along with areas travelled over.

Sample 403<sup>(a carbonate)</sup> returned significant values in the assay but was low in copper. most assays had high iron and some interesting additional numbers.

see attached assay certificate -

The season was cut short due to smoke & Breath Problems and as a result the Geochem and panning was not completed. - Discussions with prospectors and Geologists has resulted in the opinion that the high grade copper float may be associated with the large mag low on the indian R. and could possibly be located with Geophysics.

Target # 2

The Bearfeed Creek area was visited on three days to try and locate an old trail access to the prospecting area. one good trail was located on the west side of Bearfeed Cr. but did not continue all the way - this trail will be used in future to access the prospecting area but a lot of road will have to be cut for A.T.V. access a light aircraft was hired to over fly the area as trails are clearly visible from the air. But due to engine trouble the flight was not completed.

all prospecting done in the 2004 season was done on foot and By A.T.V.

4

assay Results, map with Geology and map with  
sample locations and Routes taken while Prospecting  
are attached - a field notes Book is also included

Signed

Eugene Curley



GEOCHEMICAL ANALYSIS CERTIFICATE

Curley, Eugene, File # A007781



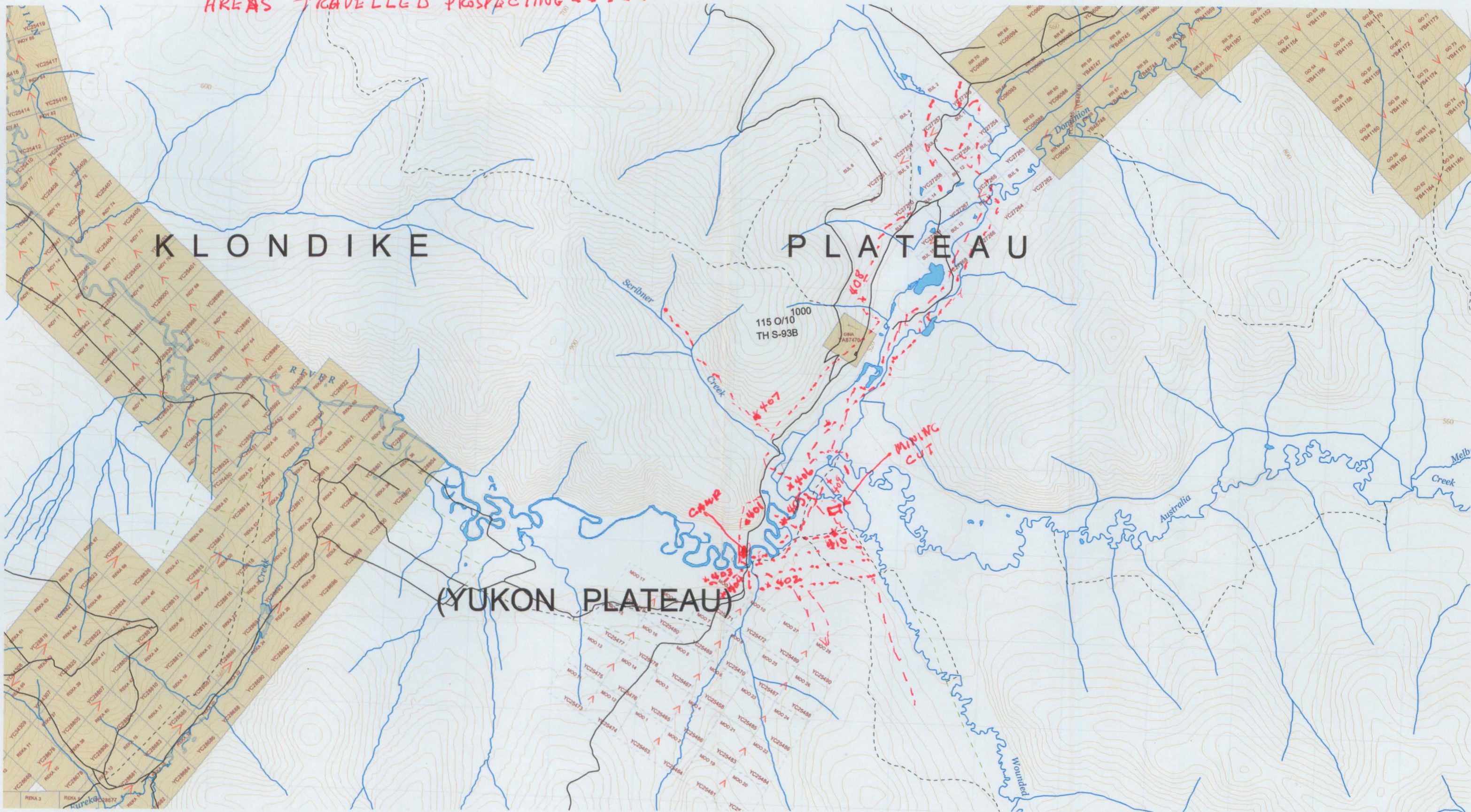
SAMPLE#	Mo	Cu	Pb	Zn	Ag	Ni	Co	Mn	Fe	As	U	Au	Th	Sr	Cd	Sb	Bi	V	Ca	P	La	Cr	Mg	Ba	Tl	B	Al	Na	K	W	Au*	
	ppm	ppm	ppm	ppm	ppm	ppm	ppm	ppm	%	ppm	ppm	ppm	ppm	ppm	ppm	ppm	ppm	ppm	%	%	ppm	ppm	%	ppm	%	%	%	%	%	%	ppm	ppb
SI	<1	<1	<3	3	<3	<1	<1	7	.19	<2	<8	<2	<2	3	<5	3	3	4	.13	.002	<1	1	<.01	5	<.01	3	.01	.52	.01	<2	<.5	
401	3	7	4	12	<.3	2	5	379	.91	2	<8	<2	4	53	<.5	3	3	18	3.64	.043	5	9	.38	19	.15	3	.79	.02	.04	<2	1.0	
402	1	32	4	34	<.3	9	3	140	2.86	14	<8	<2	19	9	<.5	9	<3	9	.09	.013	22	18	.26	39	.02	<3	.40	.06	.08	<2	1.3	
403	<1	7	5	18	.3	925	70	1532	4.44	968	<8	<2	<2	132	.8	3	<3	15	2.27	.008	3	482	9.27	363	<.01	<3	.12	<.01	<.01	<2	115.7	
404	<1	92	<3	1303	<.3	111	9	795	34.50	413	<8	<2	3	19	5.3	43	<3	131	.12	.939	19	40	.15	1268	<.01	<3	.25	<.01	.03	<2	4.1	
405	4	18	<3	247	<.3	70	9	757	17.63	273	<8	<2	<2	11	.5	15	<3	100	.04	.043	3	28	.07	2340	<.01	<3	.17	<.01	.03	<2	.6	
406	<1	205	4	146	<.3	33	31	1808	9.43	15	<8	<2	2	21	.5	<3	<3	205	.39	.093	7	24	1.91	235	.15	<3	2.49	.01	.15	<2	1.0	
407	5	2	3	5	<.3	4	1	45	.59	16	<8	<2	<2	22	<.5	5	3	25	.02	.018	6	15	.03	391	<.01	<3	.19	<.01	.08	<2	.5	
408	14	218	11	406	<.3	100	7	429	13.22	384	<8	<2	<2	49	1.9	54	<3	53	.04	.095	6	22	.04	529	<.01	<3	.25	<.01	.05	<2	2.6	
409	1	36	4	238	<.3	160	23	1918	16.60	136	<8	<2	11	10	.5	<3	<3	49	.31	.113	26	22	.05	158	.01	<3	.66	<.01	.06	<2	1.1	
410	22	58	335	27	1.2	9	4	88	3.53	34	<8	<2	3	33	<.5	<3	6	50	.31	.113	5	29	.15	64	.35	<3	.09	.04	.12	<2	13.1	
RE 410	24	58	344	29	1.4	9	4	89	3.57	36	<8	<2	3	34	.5	3	<3	51	.32	.114	5	29	.15	65	.35	<3	.09	.04	.12	<2	11.8	
STANDARD DS6/AU-R	11	125	28	140	.5	24	10	700	2.91	23	<8	<2	3	40	5.8	5	5	57	.82	.079	15	190	.58	162	.08	16	1.88	.08	.16	4	492.2	

GROUP 10 - 0.50 GM SAMPLE LEACHED WITH 3 ML 2-2-Z NCL-HNO3-H2O AT 95 DEG. C FOR ONE HOUR, DILUTED TO 10 ML, ANALYSED BY ICP-ES.  
 (>) CONCENTRATION EXCEEDS UPPER LIMITS. SOME MINERALS MAY BE PARTIALLY ATTACKED. REFRACTORY AND GRAPHITIC SAMPLES CAN LIMIT AU SOLUBILITY.  
 ASSAY RECOMMENDED FOR ROCK AND CORE SAMPLES IF CU PB ZN AS > 1%, AG > 30 PPM & AU > 1000 PPB  
 - SAMPLE TYPE: ROCK R150 60C AU\* IGHITED, ACID LEACHED, ANALYZED BY ICP-MS. (15 gm)  
 Samples beginning 'RE' are Returns and 'RRE' are Reject Returns.

Date 11/18/05 DATE RECEIVED: DEC 22 2004 DATE REPORT MAILED: Jan 12/05



SAMPLE LOCATIONS \*  
AREAS TRAVELLED PROSPECTING - - -



GEOLOGY MAP

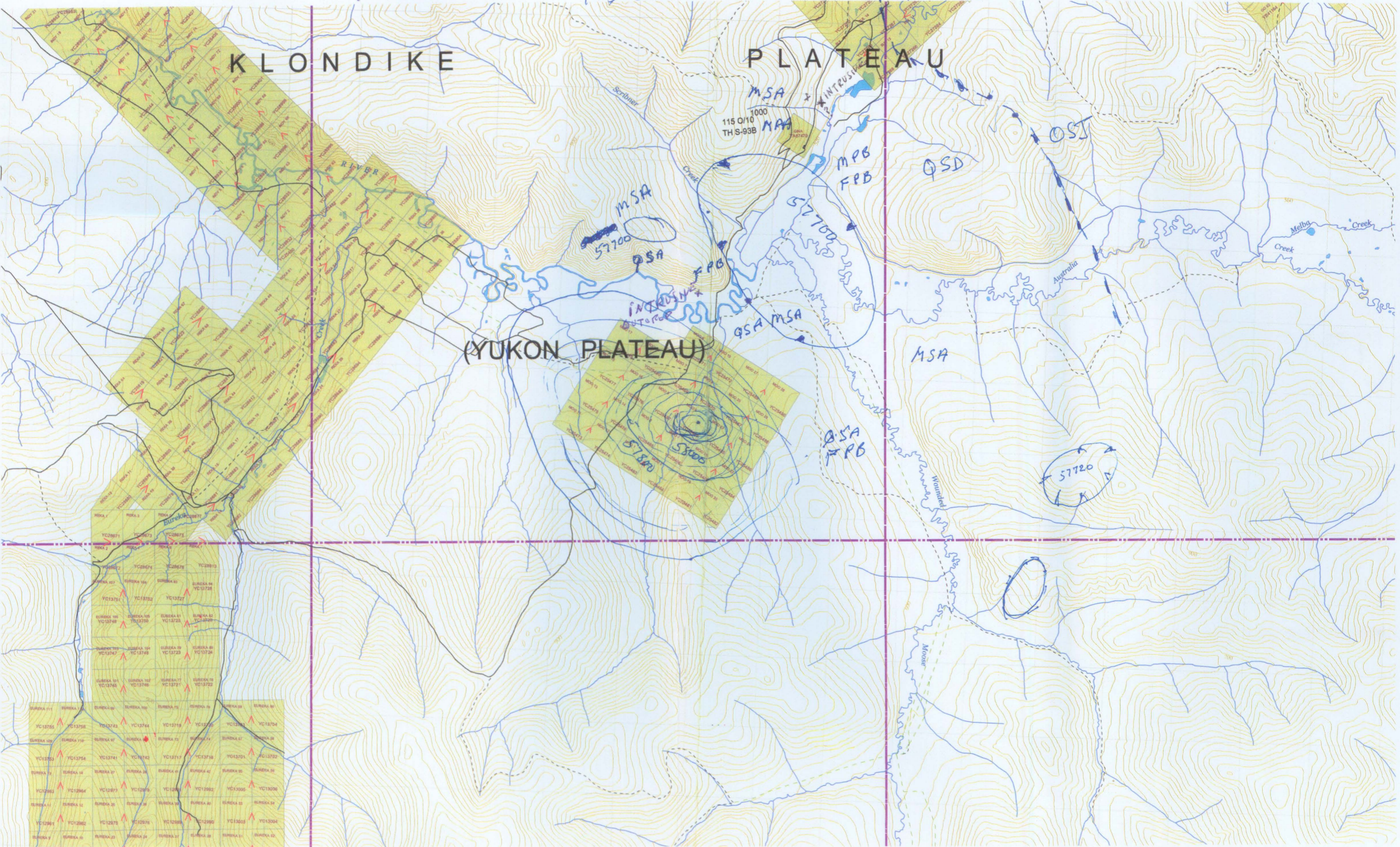
1150.10

THRUST FAULT

KLONDIKE

PLATEAU

(YUKON PLATEAU)



Early Cretaceous

YUKON 111	YUKON 112	YUKON 113	YUKON 114	YUKON 115	YUKON 116	YUKON 117	YUKON 118
YUKON 119	YUKON 120	YUKON 121	YUKON 122	YUKON 123	YUKON 124	YUKON 125	YUKON 126
YUKON 127	YUKON 128	YUKON 129	YUKON 130	YUKON 131	YUKON 132	YUKON 133	YUKON 134
YUKON 135	YUKON 136	YUKON 137	YUKON 138	YUKON 139	YUKON 140	YUKON 141	YUKON 142
YUKON 143	YUKON 144	YUKON 145	YUKON 146	YUKON 147	YUKON 148	YUKON 149	YUKON 150
YUKON 151	YUKON 152	YUKON 153	YUKON 154	YUKON 155	YUKON 156	YUKON 157	YUKON 158
YUKON 159	YUKON 160	YUKON 161	YUKON 162	YUKON 163	YUKON 164	YUKON 165	YUKON 166
YUKON 167	YUKON 168	YUKON 169	YUKON 170	YUKON 171	YUKON 172	YUKON 173	YUKON 174
YUKON 175	YUKON 176	YUKON 177	YUKON 178	YUKON 179	YUKON 180	YUKON 181	YUKON 182
YUKON 183	YUKON 184	YUKON 185	YUKON 186	YUKON 187	YUKON 188	YUKON 189	YUKON 190
YUKON 191	YUKON 192	YUKON 193	YUKON 194	YUKON 195	YUKON 196	YUKON 197	YUKON 198
YUKON 199	YUKON 200	YUKON 201	YUKON 202	YUKON 203	YUKON 204	YUKON 205	YUKON 206
YUKON 207	YUKON 208	YUKON 209	YUKON 210	YUKON 211	YUKON 212	YUKON 213	YUKON 214
YUKON 215	YUKON 216	YUKON 217	YUKON 218	YUKON 219	YUKON 220	YUKON 221	YUKON 222
YUKON 223	YUKON 224	YUKON 225	YUKON 226	YUKON 227	YUKON 228	YUKON 229	YUKON 230

MP = mafic plutonic      FFB = Mesodiabase      QSD = foliated muscovite feldspar quartz schist      MSA = mafic schist chlorite quartz







**ACME ANALYTICAL LABORATORIES LTD.**

852 East Hastings, Vancouver, B.C., CANADA V6A 1R6

Phone: (604) 253-3158 Fax: (604) 253-1716

Our GST # 100035377 RT



**CURLEY, EUGENE**  
 Box 47  
 Faro, YT  
 Y0B 1K0

Inv.#: **A407781B**  
 Date: Jan 14 2005

QTY	ASSAY	PRICE	AMOUNT
10	GEO1 @	13.25	132.50
10	R150 - ROCK @	5.25	52.50
SURCHARGE FOR UNDER 20 SAMPLES PER BATCH LESS 50% PAID BY GOVERNMENT OF YUKON			185.00
			20.00
			-102.50
GST Taxable 7.00% GST			102.50
			7.18
CAD \$			<b>109.68</b>

COPIES 1

Please pay last amount shown. Return one copy of this invoice with payment.  
 TERMS: Net two weeks. 1.5 % per month charged on overdue accounts.

[ ACME 3 ]

287|YXY|00232164

287 00232164

<b>SHIPPERS NAME AND ADDRESS</b> Eugene/Curley  Whitehorse YT CANADA		<b>SHIPPERS ACCOUNT NUMBER</b> 99516421		NOT NEGOTIABLE <b>AIR WAYBILL</b> (AIR CONSIGNMENT NOTE)		<b>AIR NORTH LTD.</b> 150 Condor Rd. Whitehorse, YT Y1A 6E6 GST No. R100094499	
<b>CONSIGNEES NAME AND ADDRESS</b> Acme Analytical Labs 852 E. Hastings St Vancouver BC CANADA		<b>CONSIGNEES ACCOUNT NUMBER</b> 99516422		It is agreed that the goods described herein are accepted in apparent good order and condition (except as noted) for carriage SUBJECT TO THE CONDITIONS OF CONTRACT ON THE REVERSE HEREOF. THE SHIPPER'S ATTENTION IS DRAWN TO THE NOTICE CONCERNING CARRIERS' LIMITATION OF LIABILITY. Shipper may increase such limitation of liability by declaring a higher value for carriage and paying a supplemental charge if required.			
<b>ISSUING CARRIERS AGENT NAME AND CITY</b> AIR NORTH LTD. Whitehorse				<b>ALSO NOTIFY NAME AND ADDRESS (OPTIONAL ACCOUNTING INFORMATION)</b>			
<b>AGENTS IATA CODE</b> 287		<b>ACCOUNT NO.</b>		<b>ACCOUNTING INFORMATION</b>  CREDIT:VISA			
<b>AIRPORT OF DEPARTURE (ADDR OF FIRST CARRIER) AND REQUESTED ROUTING</b> Whitehorse							
<b>ROUTING AND DESTINATION</b>							
TO	BY FIRST CARRIER	TO	BY	TO	BY	CURRENCY	DECLARED VALUE FOR CARRIAGE
YVR	4N					CDN	NVD
<b>AIRPORT OF DESTINATION</b> Vancouver		<b>FOR CARRIER USE ONLY</b> FLIGHT/DATE		<b>AMOUNT OF INSURANCE</b>		<b>DECLARED VALUE FOR CUSTOMS</b> NCV	
INSURANCE: If shipper requests insurance in accordance with conditions on reverse hereof, indicate amount to be insured in figures in box marked amount of insurance.						TC	

**HANDLING INFORMATION** these commodities licensed by US for ultimate destination Diversion contrary to US law is provided

Please Deliver

NO. OF PIECES RCP	GROSS WEIGHT	RATE CLASS COMMOITY ITEM NO.	CHARGEABLE WEIGHT	RATE CHARGE	TOTAL	NATURE AND QUANTITY OF GOODS (INCL. DIMENSION OR VOLUME)
1	11	P	11.00	1.00	11.00	Rock Samples
				NSC 10%	2.50	DIMS 1.0X1.0X1.0 INCHES.
1	11.0				27.50	

PREPAID WEIGHT CHARGE COLLECT A. 27.50		PUP ZONE B.	PICKUP CHARGES C. 12.00	ORIGIN ADVANCE CHARGES K.	DESCRIPTION OF ORIGIN ADVANCE L.	ITEMS PREPAID COLLECT
VALUATION CHARGE D.		DEL ZONE J.	DELIVERY CHARGES C. 12.00	DEST. ADVANCE CHARGES L.	DESCRIPTION OF DEST. ADVANCE M.	ITEMS COLLECT
TAX L. 2.76		SHIPPER'S R.F.C.		OTHER CHARGES AND DESCRIPTION F.		
TOTAL OTHER CHARGES DUE AGENT B.F.		Shipper certifies that the particulars on the face hereof are correct and that insofar as any part of the consignment contains restricted articles, such part is properly described by name and is in proper condition for carriage by air according to applicable national government regulations, and for international shipments, the current international Air Transport Association's Restricted Articles Regulations				
TOTAL OTHER CHARGES DUE CARRIER C. 12.00		SIGNATURE OF SHIPPER OR HIS AGENT				
CURRENCY COD →		EXECUTED ON				
TOTAL PREPAID 42.26		21-12-2004 05:28 Whitehorse				
CURRENCY CONVERSION RATES TOTAL COLLECT IN DESTINATION CURRENCY		(Date) (Time) at (Place) SIGNATURE OF ISSUING CARRIER OR ITS AGENT				
CHARGES AT DESTINATION		TOTAL COLLECT CHARGES				

**David Downing**  
14 Buttercup Place  
Whitehorse, Yukon  
Y1A 5V1

---

25 February 2004

Invoice: 200402003

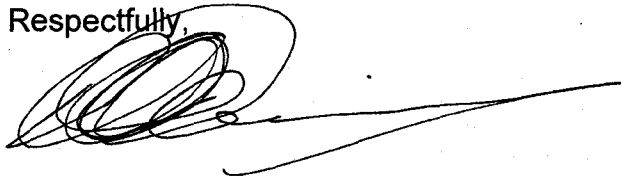
Mr. Eugene Curley  
By Hand  
Whitehorse, Yukon

Paid in full \$500.00 for:

Desktop publishing, editing, and graphics creation of Yukon Prospectors Assistance Proposal from interviews and handwritten notes supported by geologic, geophysical and geochemical maps and reports. Supporting geology reports and maps purchased for inclusion in the proposal are included in the fixed cost price.

It's been a pleasure working with you Eugene. Good luck with your application and prospecting.

Respectfully,

A handwritten signature in black ink, appearing to be 'David Downing', with a long horizontal line extending to the right.

David Downing

