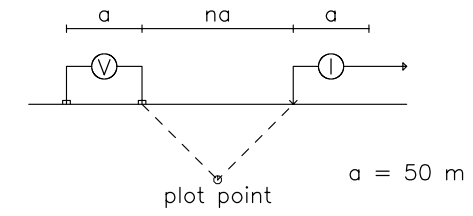


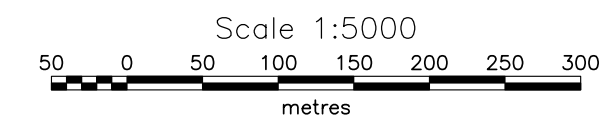
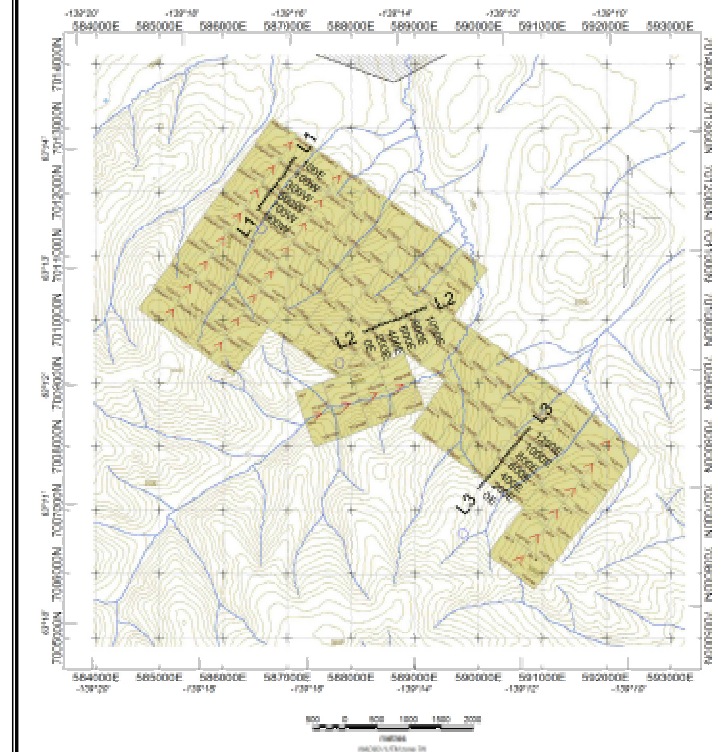
# L1

## Modified Pole-Dipole Array



Stationary electrode at 1200 W.  
Survey moved to the east.

Vertical exaggeration on modelled sections = 0.5



COPPER RIDGE EXPLORATIONS INC.

INDUCED POLARIZATION SURVEY  
L1 Thistle Project Figure E1  
Pseudosections of App. Resistivity,  
App. Chargeability & Error  
Resistivity & Chargeability Models

Yukon Territory, Canada Dawson Mining District  
NTS: 1150/03 PROJ: Local  
DATE: Oct 18, 2005 JOB: KRX-05-01-YT

AURORA GEOSCIENCES LTD.

