

James S. Dodge
P.O.Box 31013 RPO
Whitehorse, Yukon
Y1A 5P7 Canada

Steve Traynor
Yukon Geological Survey
Box 2703 (K102)
Whitehorse, Yukon
Y1A 2C6 Canada

Re: YMIP ~~1006~~ 06-010

Dear Mr. Traynor:

I should like to report that a medical attention by Dr. Carew of Klondike Medical Clinic had caused me to withdraw from field work for a 6-week period during August-September. Thereby completion of prospecting in the east-of-Hoole River YMIP area was not possible.

A few days ago Dr. Carew reported that on the basis of test results I could resume prospecting. Since my total helicopter expenses were high in proportion to the number of field prospecting days so far completed, it appears prudent to propose an alternate ground prospecting programme to be undertaken before the next snowfall.

LOCATION

The area of interest lies in the southwest corner of Claim Sheet 105 F/7 in the southern Yukon between Quiet Lake and Big Creek along the South Canol road. (Maps 1,2)

No valid quartz claims are known in the area (Map 3)

GEOLOGY

Reference is made to Yukon Platinum Occurences as a derivative Open File 2001-2 and particularly to the ultramafic terrane of the St. Cyr klippe missed tagged as site 12B with the larger nickel geochemical anomaly.(Map 4).

The area for prospecting of ultramafic rocks is divided into a southern (S) and northern (N) creek sectors. The applicant knows of a serpentized ultramafic eclogite exposed in S creek at approximately 609300/6793000 TUM. However, no samples were taken to test for Ni,Cr,Co or PGE. Glacial overburden conceals both ends of the 30m long bedrock exposure in the creek . Nephrite is exposed between the serpentinite and eclogite.

OPERATION MODE

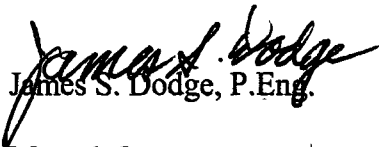
Initially S creek will be prospected from the Canol Road to the bedrock ultramafic outcrops. Silt samples will be taken every 50m and panned for heavy mineral concentrates both below and above the outcrops.

Detailed geologic mapping of the bedrock and its representative sampling will be undertaken with emphasis on till sampling along the covered extension of the bedrock north and south. Close attention for presence of chromite in this ophiolitic ultramafic will be given following the potential seen in the Squanga Lake terrane.

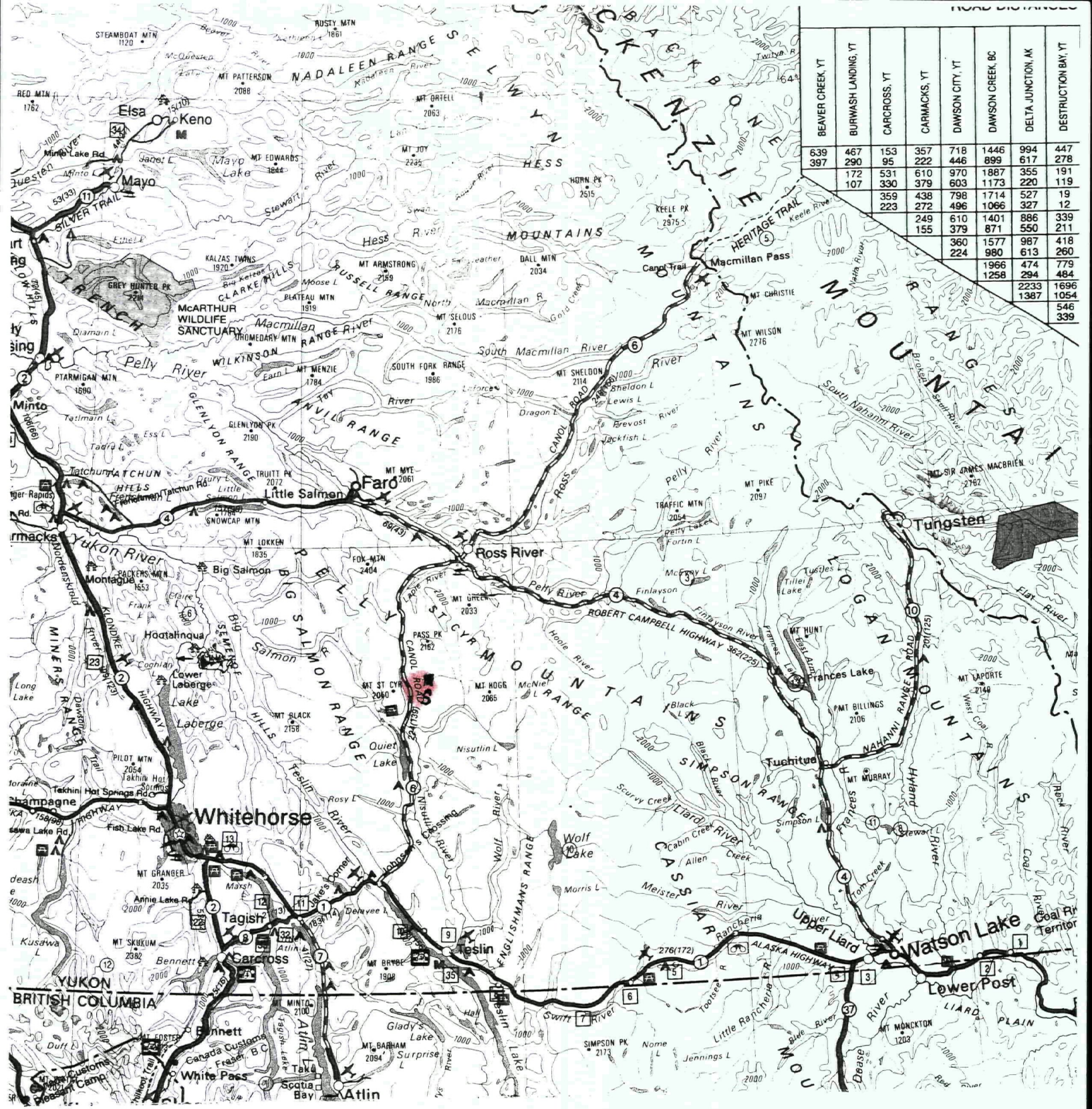
The field prospecting in the (N) creek will be patterned after that experienced in (S) creek, including stream silt sampling.

DURATION

An 8-day grassroots programme is proposed so long as heavy snows do not hinder field work. Base camps on the South Canol road will be the 4-wheel vehicle. Satellite phone will be rented. All trash will be trucked back to Whitehorse. GPS will be used to mark sample sites and eliminate need for route blazing.


James S. Dodge, P.Eng.

Maps 1-5



BEAVER CREEK YT	BURWASH LANDING YT	CARCROSS YT	CARMACKS YT	DAWSON CITY YT	DAWSON CREEK BC	DELTA JUNCTION AK	DESTRUCTION BAY YT
639	467	153	357	718	1446	994	447
397	290	95	222	446	899	617	278
	172	531	610	970	1887	355	191
	107	330	379	603	1173	220	119
		359	438	798	1714	527	19
		223	272	496	1066	327	12
			249	610	1401	886	339
			155	379	871	550	211
				360	1577	987	418
				224	980	613	260
					1966	474	779
					1258	294	484
						2233	1696
						1387	1054
							546
							339

SOUTH

Canol Road



River - km 105

naturalist Charles Sheldon
his river for a local trapper and
ss hermit.

r Peak

n Land Surveyor Arthur St. Cyr
ower Peak in 1898 when he
eying the Quiet Lake and Big
River area.

Lake Grader Station

98.7

l Road was closed in 1945. Quiet
der Station was established two
r when the road was seasonally
d. The old equipment parked
used during the original road
ion.

Lake Recreation Site - km 99

r canoe trip down the Big
river here. This is a Class II river
e challenging at high water.
see bears during the salmon

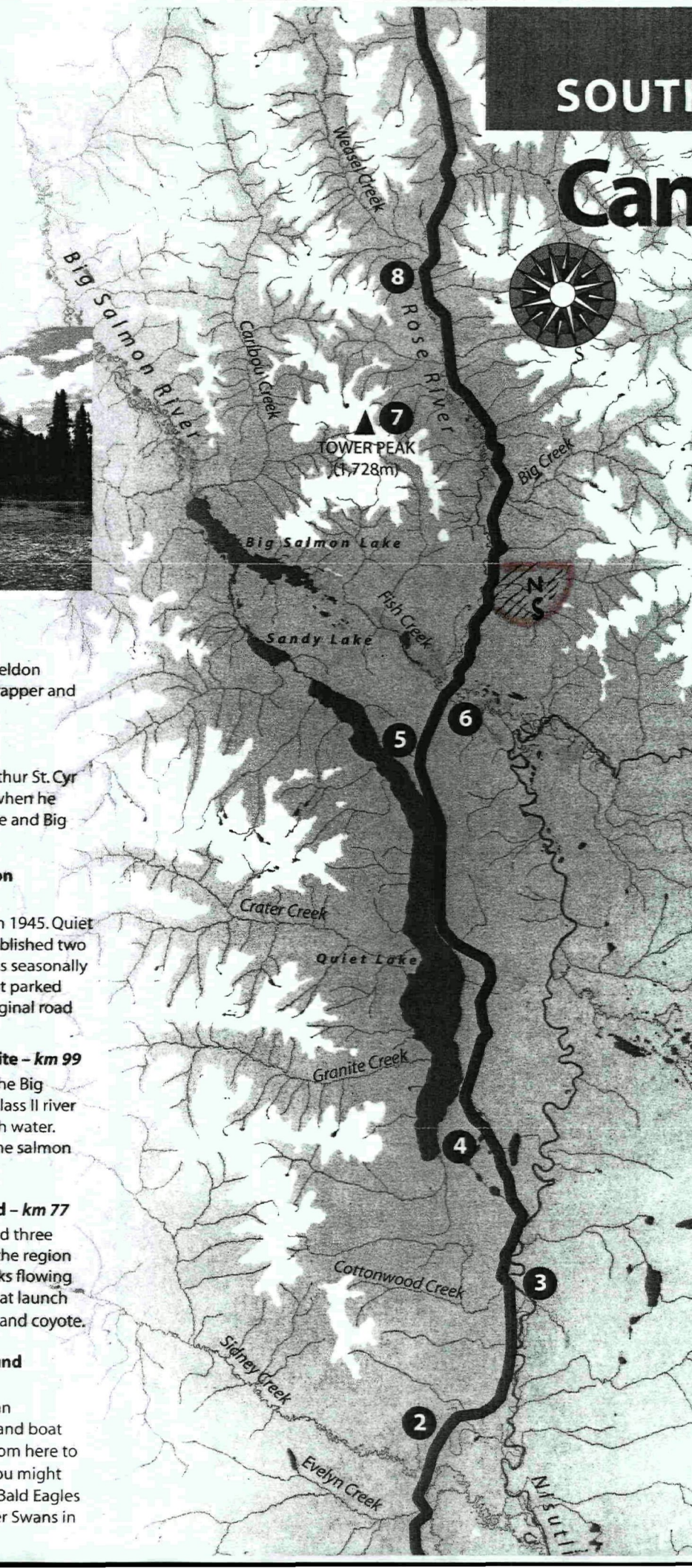
Lake Campground - km 77

ohn McCormack and three
inspectors explored the region
ed most of the creeks flowing
t Lake. There is a boat launch
ch for moose, mink and coyote.

in River Campground

7.5

ravel road leads to an
ined campground and boat
is a 6-day paddle from here to
ay on Teslin Lake. You might
e, bear, beaver and Bald Eagles
river and Trumpeter Swans in
nds.



Lupines in bloom



Lapie Canyon



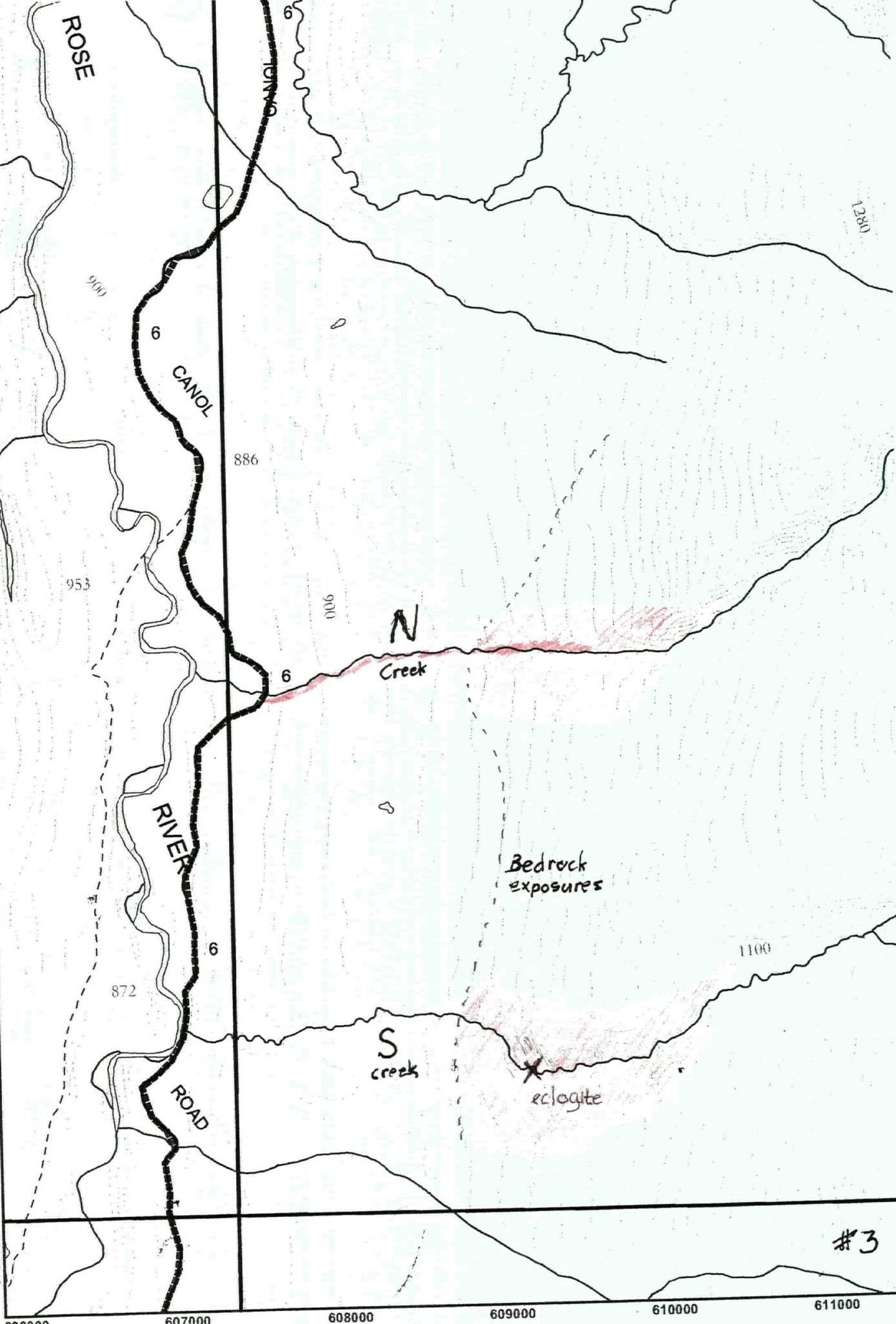
South Canol hoodoos



South Canol Road

#2

6799000
6798000
6797000
6796000
6795000
6794000
6793000
6792000



ROSE

RIVER

ROAD

CANAL

CANAL

N
Creek

S
creek

Bedrock
exposures

eclogite

#3

61°15'0"N

133°0'0"W

606000 607000 608000 609000 610000 611000

Ple Occurrence

Selected units with PGE potential

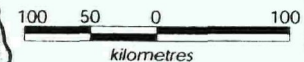
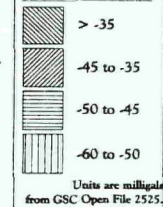
PTK:2	Late Cretaceous Carmacks Group intrusions
	Jurassic alkalic intrusions
	Triassic Galena suite mafic intrusions
PTK:3	Triassic Klucane ultramafic suite
	Mississippian - Permian Cache Creek Group ultramafic rocks
	Devonian - Permian Yukon-Tanana/Slide Mountain ultramafic rocks
	Devonian - Mississippian Earn Group black clastic rocks
	Cambrian-Silurian Marmot Formation volcanic rocks

Units from Yukon Digital CD - Goodley & Makpooze, 1

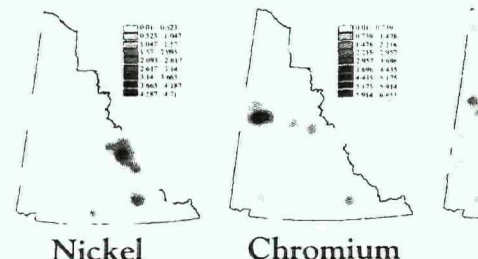
Name
Stride
Arch
Pickhandle
Dickson
Destruction
Kluane
Wash
Linda
Glen
Canalask
Swede Johnson
Wellgreen
Airways
Congdon
Yellow
Onion
Epic
Mansfield (BC)
Lindsay
Squanga
TOG
Marsh
Michie
Military (Phil)
Pyroxene
Sato
Dunite Mountain
Tam (Falcon)
Drizzle (Jet)
Nidderly (Jet)
Sanguinetti (Taiga)
Rein (Taiga)
Nick
Porphyry
Nick
Barker Creek
AR
Swede Johnson Creek
Spy - Klu
Florence Creek

▲ Apla
▲ Apl
▲ Por
* Pla
Occ
Occ

Gravity



Density of Geochemical Anomalies (ave.)



Nickel

Chromium

Figure 11. Anomalies in each cell by sampling the 100m grid for each area listed in the table. Nickel values are based on the area of the cell in each cell. Chromium values are based on the area of the cell in each cell.

Resources Website
Dev. Mes. Earn Group
compendium Ni/Zn
vol. 2001/04/05
E. Earn



Stewart Harris (Equity Engineering) points to the massive stromatolite sulphide horizon on Blackstone Resource's Taiga property hosted in Earn Group black shales. Samples from this unit returned values up to 5.21% Ni and 904 ppb combined Au + PGE.



Hydrothermal barite mound in Earn Group strata on Taiga property. Drill intersections through this section returned 25.5m of 0.51% Ni and 0.41% Zn.



Manson Creek Resources conducted grab sampling of heavily serpentinized ultramafic flows and associated rocks on the Nad property (NTS 106C/3) adjacent to the Craig property in 2001. Sampling consistently returned elevated nickel values in the 0.10% to 0.56% range (29 grab samples). To date, these flows have been identified over a minimum strike length of eight kilometres. Whole rock geochemistry indicates that the ultramafic rocks are komatiitic; pentlandite has been positively identified under petrographic examination as the nickel-bearing sulphide phase.



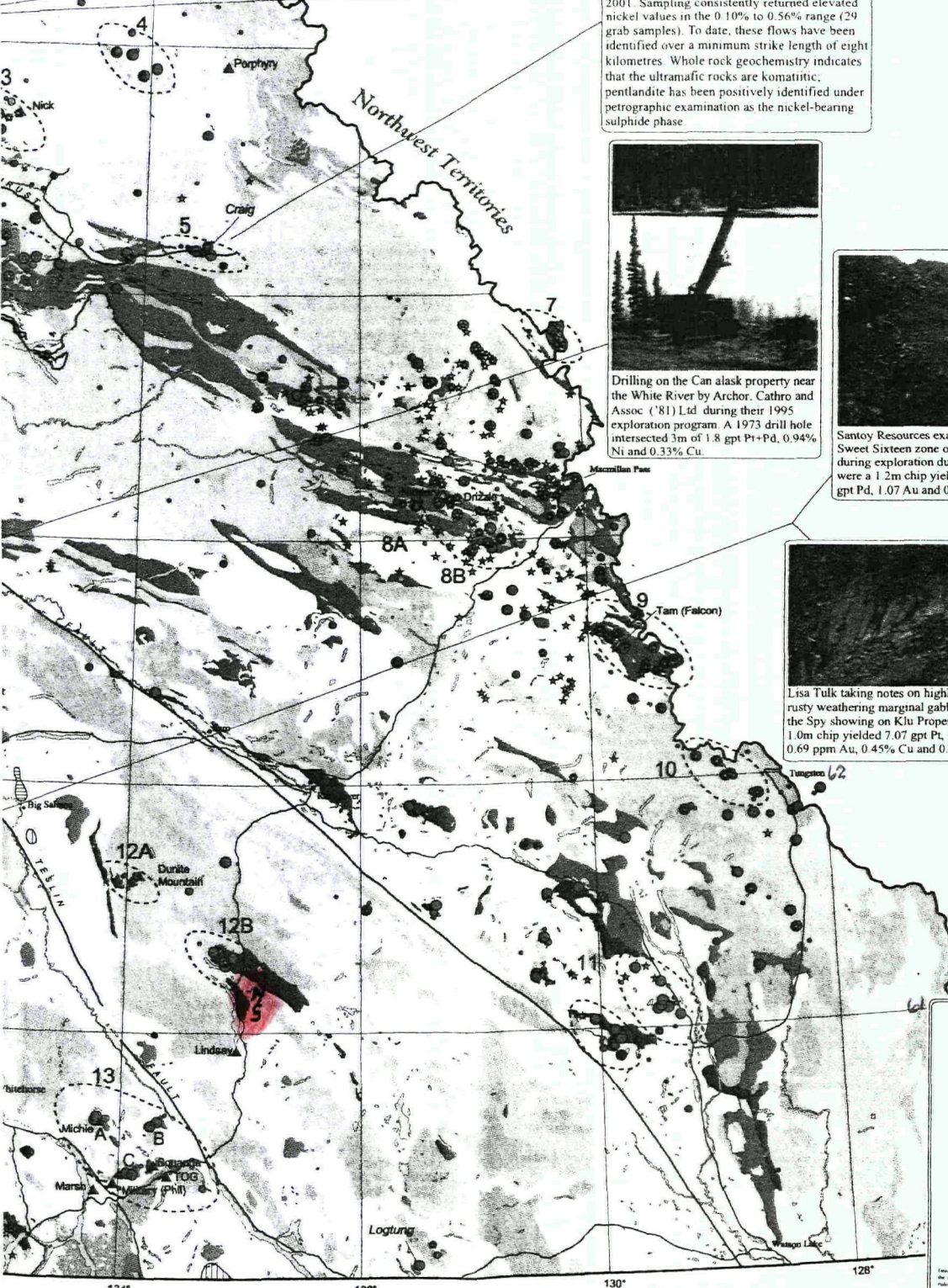
Drilling on the Can Alaska property near the White River by Archor, Cathro and Assoc ('81) Ltd during their 1995 exploration program. A 1973 drill hole intersected 3m of 1.8 gpt Pt+Pd, 0.94% Ni and 0.33% Cu.



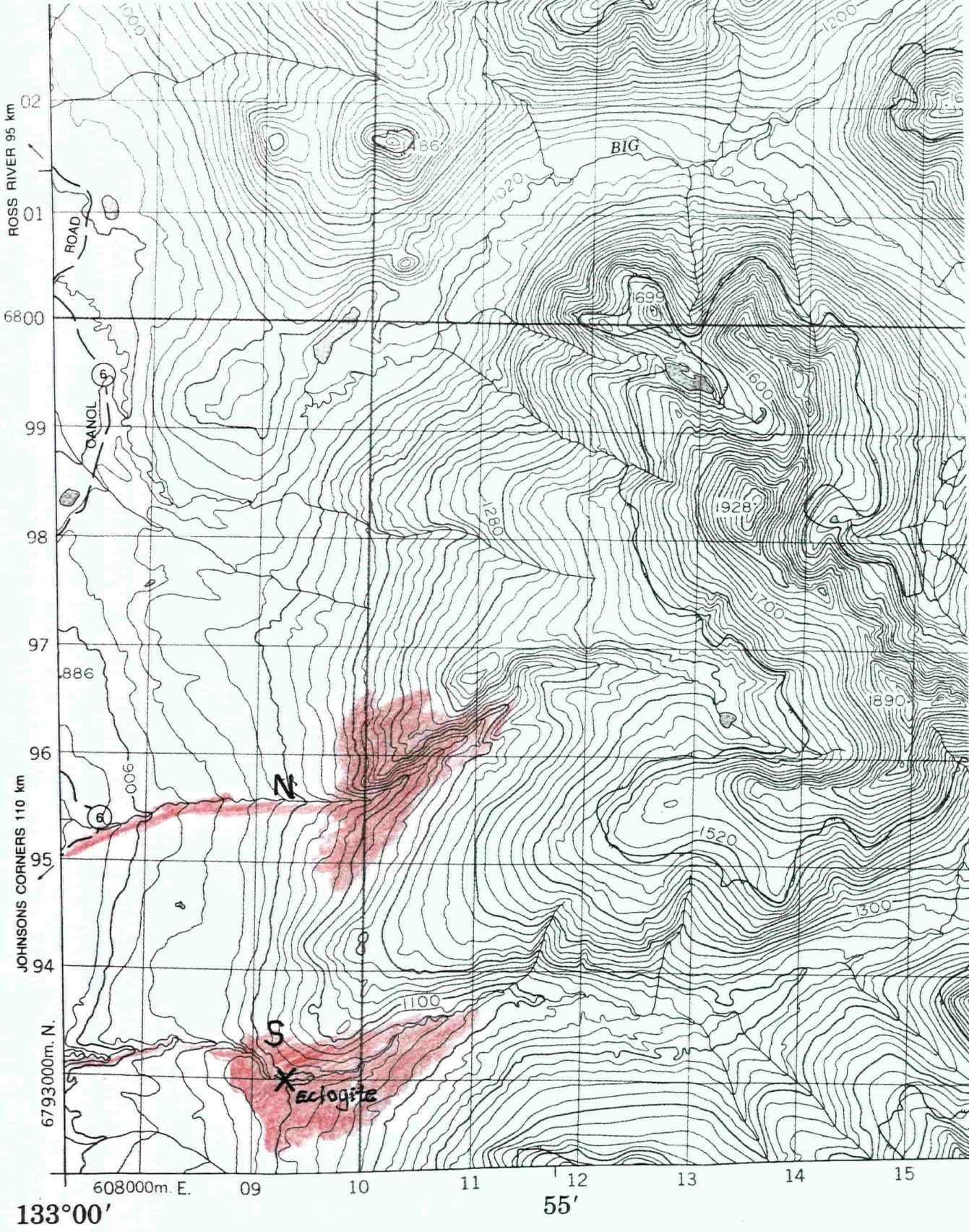
Santoy Resources examine trench through Sweet Sixteen zone on their Klu property during exploration during 2000 field season were a 1.2m chip yielded 1.84 gpt Pt, 1.55 gpt Pd, 1.07 Au and 0.12% Cu.



Lisa Tulk taking notes on highly mineralized, rusty weathering marginal gabbro ore zone at the Spy showing on Klu Property where a 1.0m chip yielded 7.07 gpt Pt, 1.34 gpt Pd, 0.69 ppm Au, 0.45% Cu and 0.16% Ni.



British Columbia



PRODUCED BY THE SURVEYS AND MAPPING BRANCH,
 DEPARTMENT OF ENERGY, MINES AND RESOURCES,
 OTTAWA. CULTURE CHECK 1983. PUBLISHED IN 1984.

COPIES MAY BE OBTAINED FROM THE CANADA MAP OFFICE,
 DEPARTMENT OF ENERGY, MINES AND RESOURCES, OTTAWA,
 OR YOUR NEAREST MAP DEALER.

© 1984. HER MAJESTY THE QUEEN IN RIGHT OF CANADA,
 DEPARTMENT OF ENERGY, MINES AND RESOURCES.

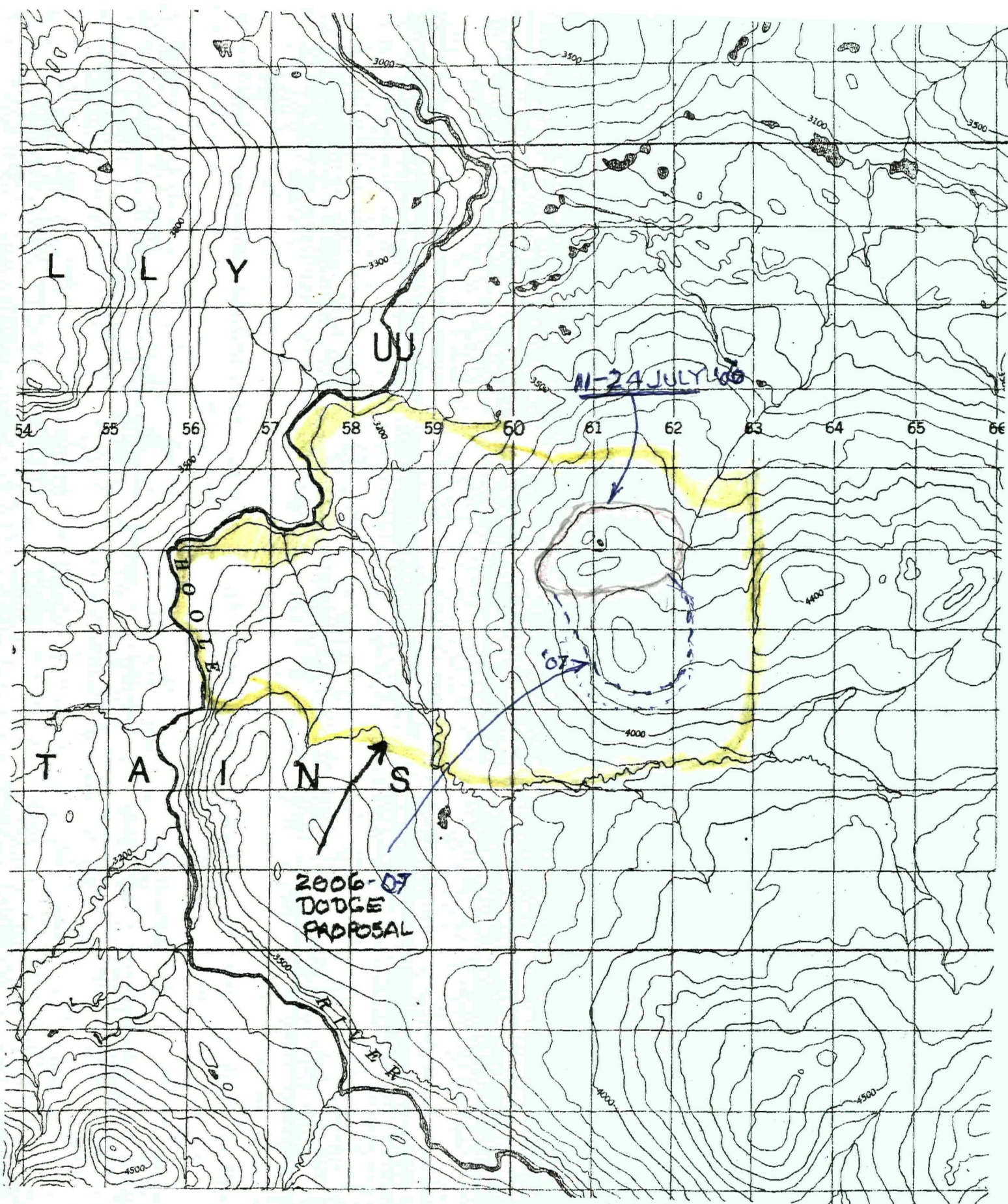
ELEVATIONS IN METRES ABOVE MEAN SEA LEVEL

CONTOUR INTERVAL 20 METRE

NORTH AMERICAN DATUM 1927
 TRANSVERSE MERCATOR PROJECTION

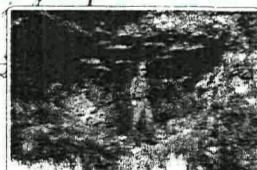
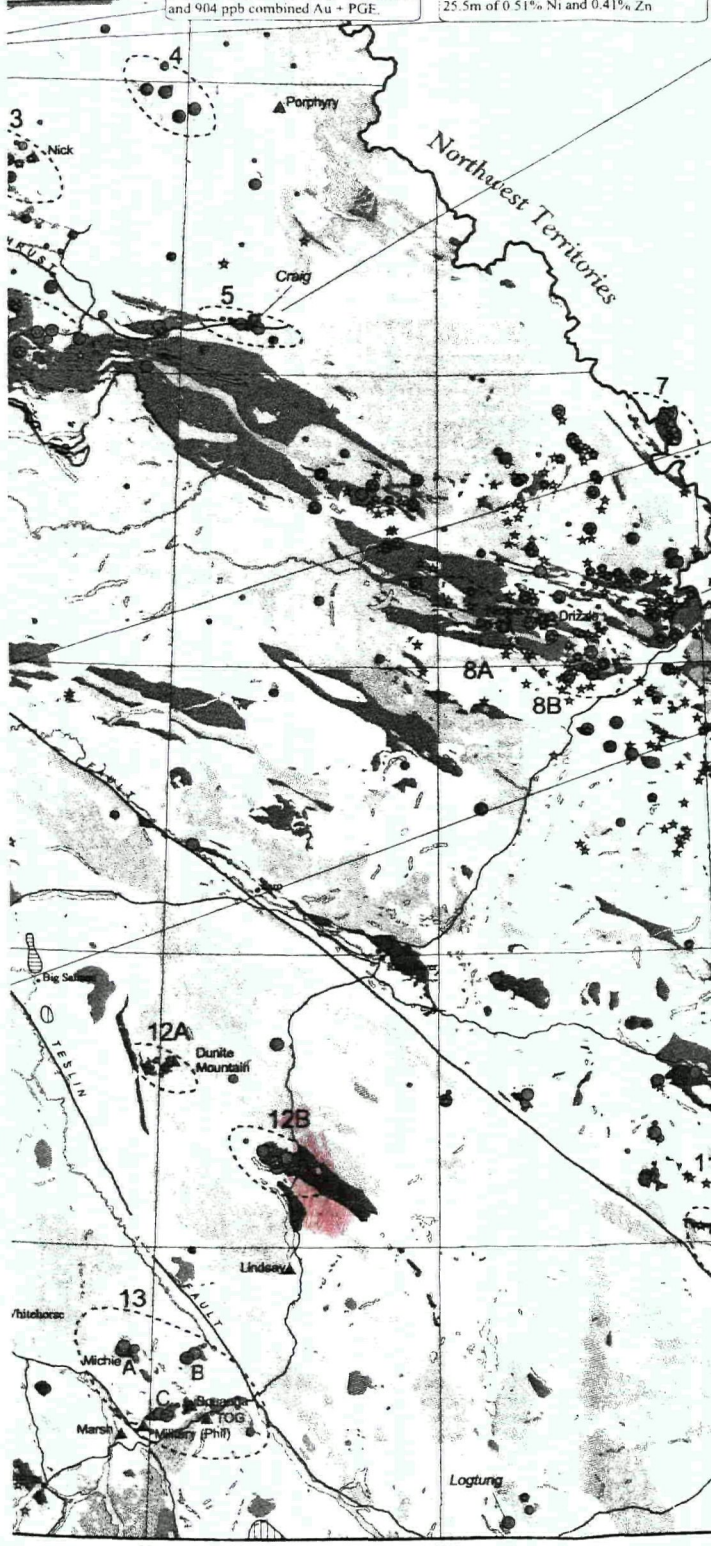
INFORMATION CONCERNING BENCH MARKS AND HORIZONTAL SURVEY MONUMENTS CAN BE OBTAINED FROM GEODETIC SURVEY, SURVEYS AND MAPPING BRANCH, OTTAWA.

#5



1000m 1056.12

rees Website.



Stewart Harris (Equity Engineering) points to the massive stratiform sulphide horizon on Blackstone Resource's Taiga property hosted in Earn Group black shales. Samples from this unit returned values up to 5.21% Ni and 904 ppb combined Au + PGE.



Hydrothermal barite mound in Earn Group strata on Taiga property. Drill intersections through this section returned 25.5m of 0.51% Ni and 0.41% Zn.



Manson Creek Resources conducted grab sampling of heavily serpentinized ultramafic flows and associated rocks on the Nad property (NTS 106C/3) adjacent to the Craig property in 2001. Sampling consistently returned elevated nickel values in the 0.10% to 0.56% range (29 grab samples). To date, these flows have been identified over a minimum strike length of eight kilometres. Whole rock geochemistry indicates that the ultramafic rocks are komatiitic; pentlandite has been positively identified under petrographic examination as the nickel-bearing sulphide phase.



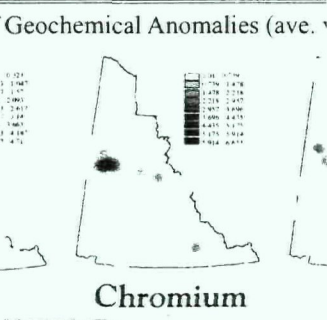
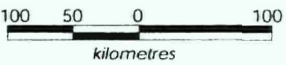
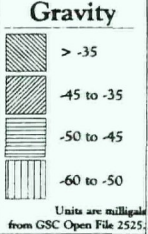
Drilling on the Can Alaska property near the White River by Anchor, Cathro and Assoc ('81) Ltd during their 1995 exploration program. A 1973 drill hole intersected 3m of 1.8 gpt Pt+Pd, 0.94% Ni and 0.33% Cu.



Santoy Resources examine trench through Sweet Sixteen zone on their Klu property during exploration during 2000 field season where a 1.2m chip yielded 1.84 gpt Pt, 1.55 gpt Pd, 1.07 Au and 0.12% Cu.



Lisa Tulk taking notes on highly mineralized, rusty weathering marginal gabbro ore zone at the Spy showing on Klu Property where a 1.0m chip yielded 7.07 gpt Pt, 1.34 gpt Pd, 0.69 ppm Au, 0.45% Cu and 0.16% Ni.



Density of Geochemical Anomalies (ave. ...)

Selected units with PGE potential

Light grey	Late Cretaceous Carmacks Group intrusions
Dark grey	Jurassic alkalic intrusions
Medium grey	Triassic Galena suite mafic intrusions
Dark grey with dots	Triassic Klwane ultramafic suite
Light grey with dots	Mississippian - Permian Cache Creek Group ultramafic rocks
Dark grey with dots	Devonian - Permian Yukon-Tanana/Slide Mountain ultramafic
Medium grey with dots	Devonian - Mississippian Earn Group black clastic rocks
Dark grey with dots	Cambrian-Silurian Marmot Formation volcanic rocks

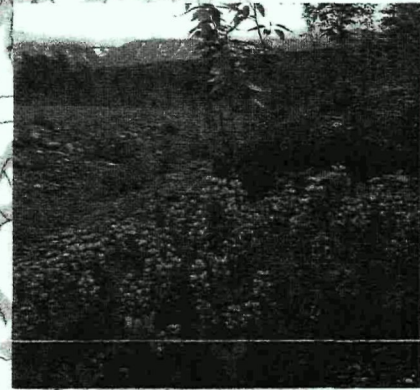
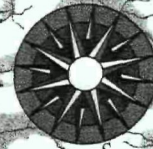
Units from Yukon Digital CD - Gorday & Makopson, 1

Name
Stride
Arch
Pickhandle
Dickson
Destruction
Kluane
Wash
Linda
Glen
Canalask
Swede Johnson
Wellgreen
Airways
Congdon
Yellow
Onion
Epic
Mansfield (BC)
Lindsay
Squamga
TOG
Marsh
Michie
Military (Phil)
Pyroxene
Sato
Dunite Mountain
Tam (Falcon)
Drizzle (Jet)
Nidderly (Jet)
Sanguinetti (Taiga)
Rein (Taiga)
Nick
Porphyry
Nick
Barker Creek
AR
Swede Johnson Creek
Spy - Klu
Florenc Creek

British Columbia

SOUTH

Canol Road



Lupines in bloom



Lapie Canyon



South Canol hoodoos



South Canol Road

#2

River - km 105

naturalist Charles Sheldon
his river for a local trapper and
ss hermit.

r Peak

n Land Surveyor Arthur St. Cyr
ower Peak in 1898 when he
eying the Quiet Lake and Big
River area.

Lake Grader Station

98.7

l Road was closed in 1945. Quiet
der Station was established two
r when the road was seasonally
l. The old equipment parked
used during the original road
ion.

Lake Recreation Site - km 99

r canoe trip down the Big
River here. This is a Class II river
e challenging at high water.
see bears during the salmon

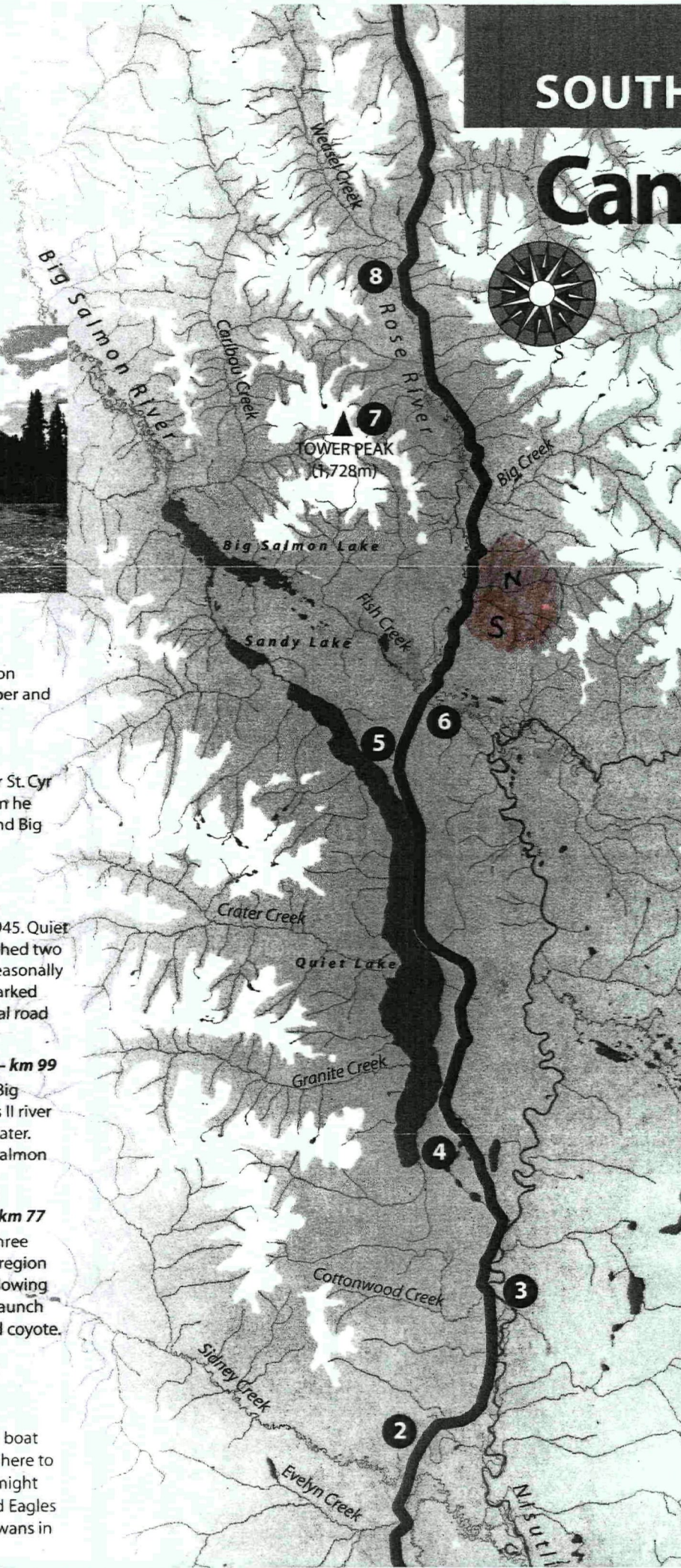
: Lake Campground - km 77

ohn McCormack and three
spectors explored the region
ed most of the creeks flowing
t Lake. There is a boat launch
ch for moose, mink and coyote.

in River Campground

7.5

ravel road leads to an
ined campground and boat
is a 6-day paddle from here to
ay on Teslin Lake. You might
e, bear, beaver and Bald Eagles
river and Trumpeter Swans in
nds.



Big Salmon River

Wetzel Creek

Caribou Creek

8

7

TOWER PEAK
(728m)

Big Salmon Lake

Big Creek

Sandy Lake

5

6

Crater Creek

Quiet Lake

Granite Creek

4

Cottonwood Creek

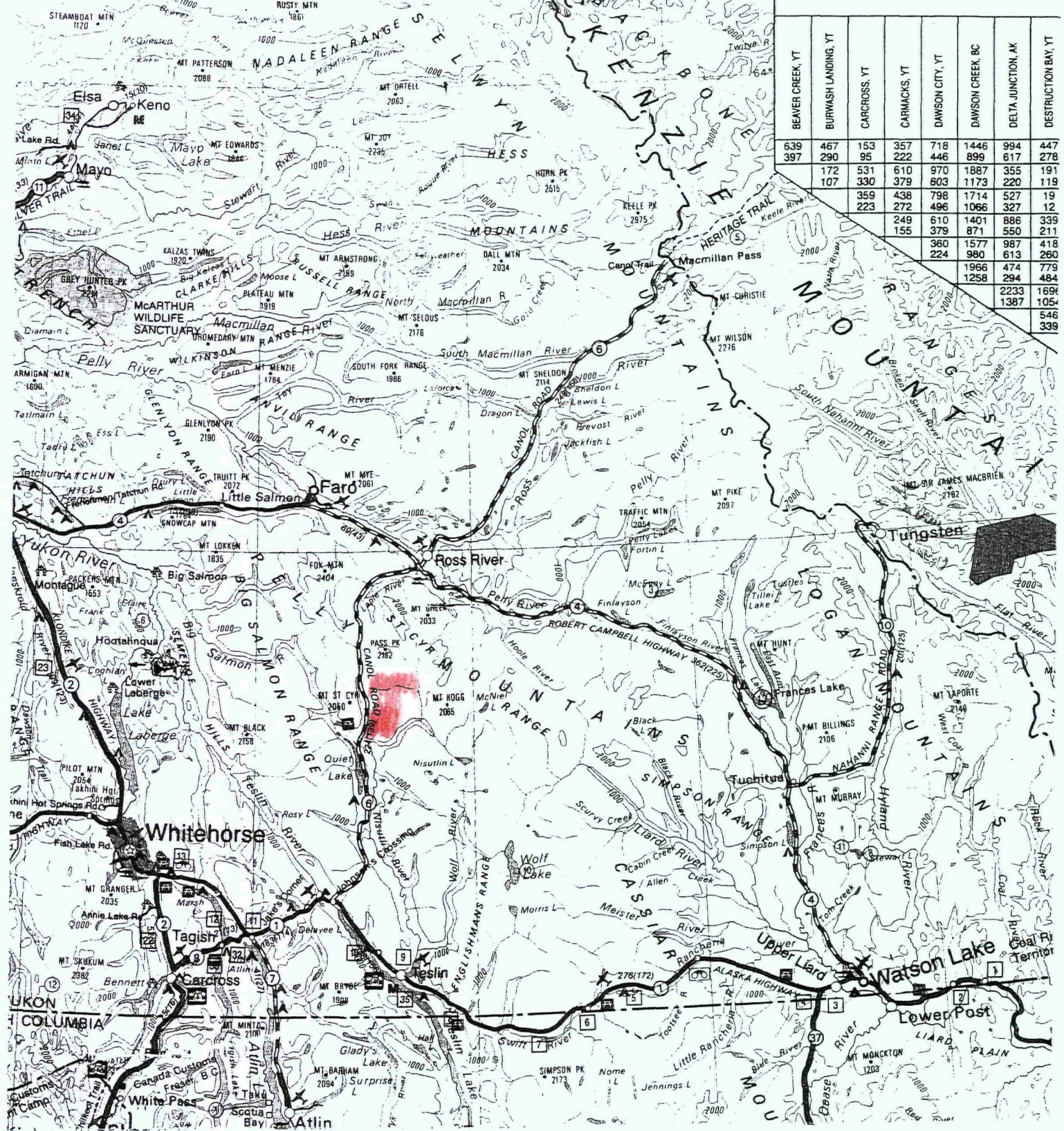
3

Sidney Creek

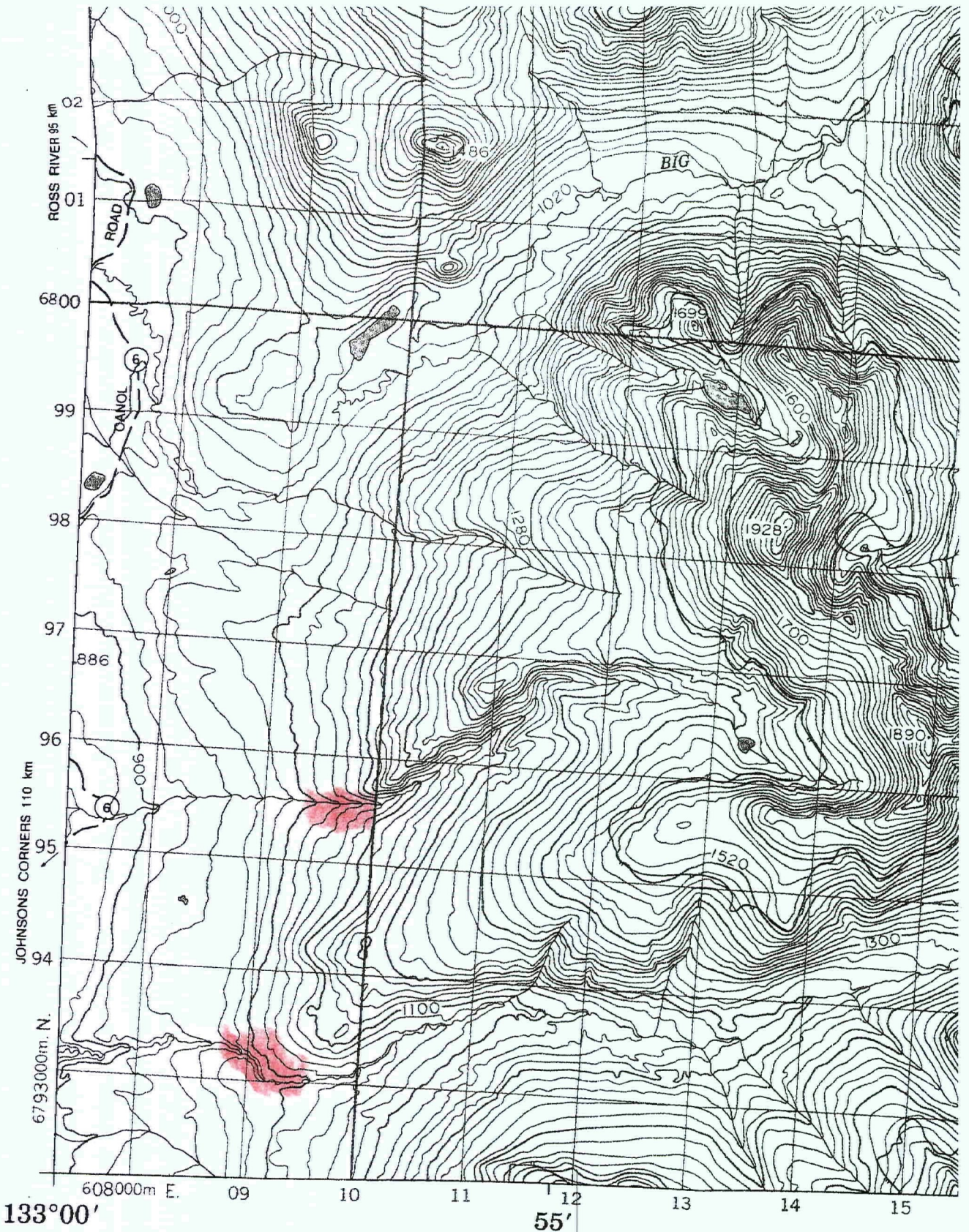
2

Evelyn Creek

Nisutl



BEAVER CREEK, YT	BURWASH LANDING, YT	CARCROSS, YT	CARMACKS, YT	DAWSON CITY, YT	DAWSON CREEK, BC	DELTA JUNCTION, AK	DESTRUCTION BAY, YT
639	467	153	357	718	1446	994	447
397	290	95	222	446	899	617	278
	172	531	610	970	1887	355	191
	107	330	379	603	1173	220	119
		359	438	798	1714	527	19
		223	272	496	1066	327	12
			249	610	1401	886	339
			155	379	871	550	211
				224	980	613	260
					1966	474	779
					1258	294	484
						2233	1696
						1387	1054
							546
							339



PRODUCED BY THE SURVEYS AND MAPPING BRANCH,
DEPARTMENT OF ENERGY, MINES AND RESOURCES,
OTTAWA. CULTURE CHECK 1983. PUBLISHED IN 1984

COPIES MAY BE OBTAINED FROM THE CANADA MAP OFFICE,
DEPARTMENT OF ENERGY, MINES AND RESOURCES, OTTAWA,
OR YOUR NEAREST MAP DEALER.

© 1984 HER MAJESTY THE QUEEN IN RIGHT OF CANADA.
DEPARTMENT OF ENERGY, MINES AND RESOURCES.

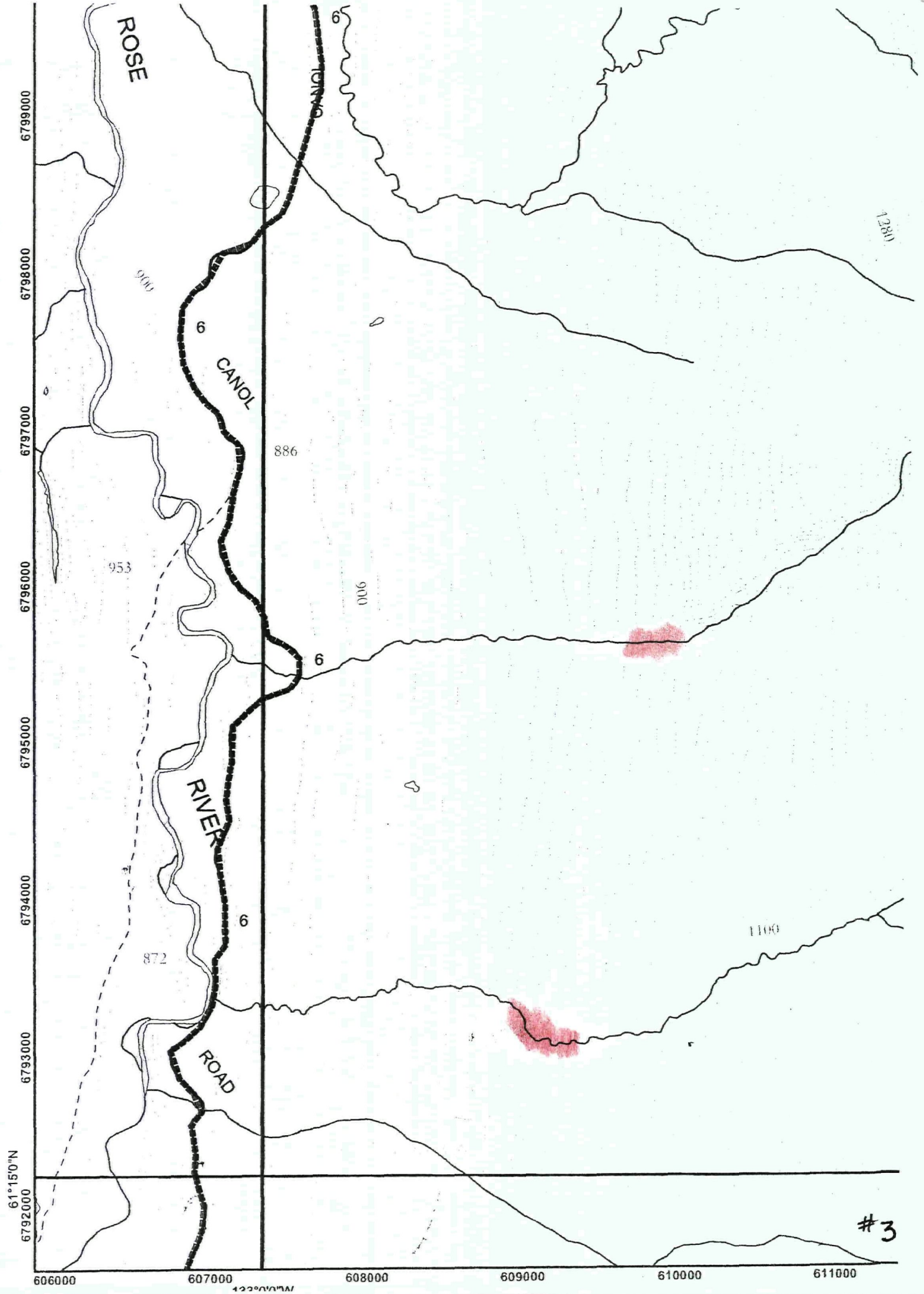
ELEVATIONS IN METRES ABOVE MEAN SEA LEVEL

CONTOUR INTERVAL..... 20 METRE

NORTH AMERICAN DATUM 1927

TRANSVERSE MERCATOR PROJECTION

INFORMATION CONCERNING BENCH MARKS AND HORIZONTAL SURVEY MONUMENTS CAN BE OBTAINED FROM GEODETIC SURVEY, SURVEYS AND MAPPING BRANCH, OTTAWA.



#3

From ACME ANALYTICAL LABORATORIES LTD. 852 E. HASTINGS ST. VANCOUVER BC V6A 1R6
To Dodge, Jim

Acme file # A607590 Received: OCT 10 2006 * 8 samples in this disk file.

Analysis: GROUP 1DX - 15.0 GM SAMPLE LEACHED WITH 90 ML 2-2-2 HCL-HNO3-H2O AT 95 DEC

ELEMENT	Mo	Cu	Pb	Zn	Ag	Ni	Co	Mn
SAMPLES	ppm	ppm	ppm	ppm	ppm	ppm	ppm	ppm
G-1	0.8	3.4	3.4	47	<.1	3.9	4.1	549
Dodge #1	0.4	52.7	5.6	33	<.1	25.7	12	121
Dodge #2	1.1	49.5	9.4	36	<.1	57.7	16	750
Dodge #3	0.3	29.1	7.4	39	<.1	145.1	21.3	473
Dodge #4	0.4	43.9	8	70	<.1	55	24.5	389
Dodge #5	0.2	32.2	7.3	58	<.1	40.8	16.8	362
Dodge #6	0.8	8.8	5.9	29	<.1	20.3	6.5	148
STANDAR	20.7	108.9	72.6	416	0.8	54.4	9.7	630

6 PHONE(604)253-3158 FAX(604)253-1716 @ CSV TEXT FORMAT

3. C FOR ONE HOUR, DILUTED TO 300 ML, ANALYSED BY ICP-MS.

Fe %	As ppm	U ppm	Au ppb	Th ppm	Sr ppm	Cd ppm	Sb ppm	Bi ppm
1.9	0.6	3.1	0.8	4.8	70	0.1	<.1	0.1
2.64	1.6	1.1	5.7	6.1	734	0.1	<.1	1.2
3.08	4.4	2.4	1.8	8.7	67	0.1	0.2	0.1
3.67	32.7	1.5	4.8	7.7	981	0.1	7.4	1.2
4.22	1.1	1.6	2.1	9.5	468	0.1	<.1	1.4
3.72	0.9	1.4	0.5	9	426	0.1	0.2	0.4
1.22	1.8	2.4	1.5	9.5	358	0.1	0.2	0.5
2.42	48.9	5.1	61.1	4.6	75	6.6	6.2	4.8

Al %	Na %	K %	W ppm	Hg ppm	Sc ppm	Tl ppm	S %	Ga ppm	
1.05	0.105	0.5	0.8	<.01		2	0.3	<.05	5
3.97	0.389	0.2	0.4	<.01		3.3	0.1	0.07	11
1.33	0.021	0.28	0.2	0.01		1.9	0.1	<.05	4
4.86	0.387	0.31	1	<.01		6.6	0.3	0.4	14
5.81	0.44	0.83	0.4	<.01		6	0.5	0.34	17
5.29	0.408	0.61	0.4	<.01		6.5	0.4	0.3	15
2.06	0.157	0.28	0.4	0.01		2	0.2	<.05	6
0.98	0.078	0.44	3.9	0.21		2.4	4.4	0.21	4

V ppm	Ca %	P %	La ppm	Cr ppm	Mg %	Ba ppm	Ti %	B ppm	
34	0.55	0.079	10	13	0.58	212	0.132		1
28	2.53	0.023	19	37	0.44	40	0.09		3
26	2.34	0.049	27	99	1.2	144	0.089		1
36	6.9	0.04	25	149	2.12	83	0.093		3
50	3.02	0.045	27	68	1.09	83	0.167		4
46	3.09	0.036	27	61	1.02	71	0.155		4
13	2.37	0.044	16	22	0.27	81	0.045		3
84	0.93	0.078	12	168	1.06	373	0.122		38

Se
ppm
<.5
<.5
<.5
<.5
<.5
<.5
<.5

3.2

From ACME ANALYTICAL LABORATORIES LTD. 852 E. HASTINGS ST VANCOUVER BC V6A 1R6
To Dodge, Jim

Acme file # A607590 Received: OCT 10 2006 * 8 samples in this disk file.

Analysis: GROUP 1DX - 15.0 GM SAMPLE LEACHED WITH 90 ML 2-2-2 HCL-HNO3-H2O AT 95 DEC

ELEMENT	Mo	Cu	Pb	Zn	Ag	Ni	Co	Mn
SAMPLES	ppm	ppm	ppm	ppm	ppm	ppm	ppm	ppm
G-1	0.8	3.4	3.4	47	<.1	3.9	4.1	549
Dodge #1	0.4	52.7	5.6	33	<.1	25.7	12	121
Dodge #2	1.1	49.5	9.4	36	<.1	57.7	16	750
Dodge #3	0.3	29.1	7.4	39	<.1	145.1	21.3	473
Dodge #4	0.4	43.9	8	70	<.1	55	24.5	389
Dodge #5	0.2	32.2	7.3	58	<.1	40.8	16.8	362
Dodge #6	0.8	8.8	5.9	29	<.1	20.3	6.5	148
STANDAR	20.7	108.9	72.6	416	0.8	54.4	9.7	630

3. C FOR ONE HOUR, DILUTED TO 300 ML, ANALYSED BY ICP-MS.

Fe %	As ppm	U ppm	Au ppb	Th ppm	Sr ppm	Cd ppm	Sb ppm	Bi ppm
1.9	0.6	3.1	0.8	4.8	70	0.1	<.1	0.1
2.64	1.6	1.1	5.7	6.1	734	0.1	<.1	1.2
3.08	4.4	2.4	1.8	8.7	67	0.1	0.2	0.1
3.67	32.7	1.5	4.8	7.7	981	0.1	7.4	1.2
4.22	1.1	1.6	2.1	9.5	468	0.1	<.1	1.4
3.72	0.9	1.4	0.5	9	426	0.1	0.2	0.4
1.22	1.8	2.4	1.5	9.5	358	0.1	0.2	0.5
2.42	48.9	5.1	61.1	4.6	75	6.6	6.2	4.8

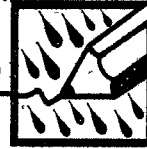
V ppm	Ca %	P %	La ppm	Cr ppm	Mg %	Ba ppm	Ti %	B ppm	
34	0.55	0.079	10	13	0.58	212	0.132		1
28	2.53	0.023	19	37	0.44	40	0.09		3
26	2.34	0.049	27	99	1.2	144	0.089		1
36	6.9	0.04	25	149	2.12	83	0.093		3
50	3.02	0.045	27	68	1.09	83	0.167		4
46	3.09	0.036	27	61	1.02	71	0.155		4
13	2.37	0.044	16	22	0.27	81	0.045		3
84	0.93	0.078	12	168	1.06	373	0.122		38

Al %	Na %	K %	W ppm	Hg ppm	Sc ppm	Tl ppm	S %	Ga ppm	
1.05	0.105	0.5	0.8	<.01		2	0.3	<.05	5
3.97	0.389	0.2	0.4	<.01		3.3	0.1	0.07	11
1.33	0.021	0.28	0.2		0.01	1.9	0.1	<.05	4
4.86	0.387	0.31	1	<.01		6.6	0.3	0.4	14
5.81	0.44	0.83	0.4	<.01		6	0.5	0.34	17
5.29	0.408	0.61	0.4	<.01		6.5	0.4	0.3	15
2.06	0.157	0.28	0.4		0.01	2	0.2	<.05	6
0.98	0.078	0.44	3.9		0.21	2.4	4.4	0.21	4

Se
ppm
<.5
<.5
<.5
<.5
<.5
< 5
<.5

3.2

"*Rite in the Rain*"[®]
ALL-WEATHER WRITING PAPER



LEVEL

All-Weather Notebook
No. 311

DODGE *YMIP*
2006

4 5/8" x 7" - 48 Numbered Pages

Medical abort

09V 0362502
6834336

July 10

Shawcross

Drove MLK to Lupine Cyn Campground

Windy Lake

July 11

Trans North Ross River

Singer Passover 1 pm

Mucky terrane beaching 5 mi. Camp pond

UAT 4068 ft

U¹ 37562'

61967

131' 17.052

1076 083

131' 62

(611, 351)

0360963

6355916

July 12

Spot also visible

Swath 4311

Fruit

#1

Moss (green) in sedge grass

Bluish-green for paper elaboration - branching

07 nite

23°C peak aft

July 13 Sun + 15-min rain

Frost covered float.

#2 0.3-cpe tabaceous float

Qtz cpe granules + minor heavy grains
 Calcareous grey schist. pub-
 crop.

July 14

Cry 10°C low 10°C hi

#3 Section to crest - thin bedded
 calcareous shales (not greenish)
 (not greenish)

: 0074311

15 JULY

in Rain - 10 am - 5 pm
Brush soaked

10°C

sat.

15 July

Sunday - 15°C

N.L. 7:15
661-3111

raining in pm + fog

17 July

17 July

cloudy am 16°C

x ridge line. 11 am
4197' alt

#4 0360981

6835049

gneiss / augen gneiss

#5 ridge - west end - drop off to W
4211' 12 noon

0360806

6835008

18 July Dylan Tues 18°C cloudy
 305-669-9936
 Ni/Lyn 67 4311

No brush openings to bedrock(?) or
 float. along crest of #NW hill

~~18~~ 19 July
 70 JX m
 143 limed like
 209 jet Campbell

19 ~~July~~ grey 14°C Wed
 Drizzle to rain by p.m.
 At camp

#6 20 July Thur 20°C grey
 dug pit (60m N of camp) and
 examined float from permafrost
 base of hillside. Variety grasses

21

Fri clear am 12°C Chilly pm
heavy rain for 1½ hrs

Architectural (vitrina?)

Cherwin

22 July

Saturday 18°C

Site test pit 2

4104

6361271

6835340

Site is same as pit 2
20 July

23 July - Sunday 04°C cool - followed
game trails on hillside (no outcrops).

24 July Monday 13°C clear
Lift out TINNULIAPTER to RR
Drive on evening to Mary Lk.

Treenierlands

August 03 Thur.

Drove - Marylake to Swiss River

@ 7 pm Trans North Bayou

Camp Site

@ 4247 to ~~Swiss River~~

UTM

OV 036 2504

UTM 0834 330

Brushed tent sets to 10pm

Partly sunny 12°

August 04 Friday

Treated elec trap w/ more cricket
from ferrets

August 05 Sat.

Rain 7am - 4pm really brush wet

Tel. 667-4311

Aug 06 - Sun

13°

Called TWA - pain stomach - 4pm
Out to Lake campground - ~~at~~Aug 07 drove 1 am to where I
Dr. Carew afternoon