

**GEOCHEMICAL**

**YMIP REPORT  
06-051**

**CANTUNG AREA**

**HORN WEST AREA  
NTS # 105 H / 14  
LAT: 61° 58 N  
LONG: 129° 00 W**

**HORN NORTH AREA  
NTS # 105 I / 02  
LAT: 62° 05 N  
LONG: 128° 58 W**

**HORN SOUTH AREA  
NTS # 105 H / 16  
LAT: 61° 51 N  
LONG: 128° 56 W**

**WATSON LAKE MINING DISTRICT**

**AUTHOR OF REPORT SHAWN RYAN**

**WORK PERFORMED AUGUST 23 to AUGUST 29, 2006**

**DATE OF REPORT JANUARY 25, 2007**

## TABLE OF CONTENT

1.0	Summary	p.3
2.0	INTRODUCTION	p.3
3.0	PROJECT LOCATION	p.3
4.0	ACCESS	p.3
5.0	GEOLOGY	p.4
5.1	REGIONAL GEOLOGY	p.4
6.0	WORK PERFORMED / METHODS	p.4
6.3	Soil Survey	p.4
7.0	INTERPRETATION	p.4
8.0	RECOMMENDATION	p.5
9.0	REFERENCES CITED	p.5
10.0	Cost	p.5
11.0	Qualification	p.6
	Gold Soil geochemistry map	Figure 1
	Arsenic Soil geochemistry map	Figure 2
	Tungsten Soil geochemistry map	Figure 3
	Bismuth soil geochemistry map	Figure 4
	Assay Data / GPS Soil Location Data	Appendix

## **1.0 SUMMARY**

The Cantung Focus Regional program has seen 16 man days of work collecting 408 soils on five different target areas. Surprisingly the program was not successful in identifying new gold targets.

## **2.0 INTRODUCTION**

The Cantung Regional Focus Program was undertaken to evaluate new gold targets such as the Horn, Hy, Fer Properties that are located in area. The Focus Regional program had three separate areas evaluated. On August 23 a crew of 9 men mobilized to the area and a helicopter mobilized on August 24, 2006. A Focus Regional Program was conducted in conjunction with geophysical and soil survey on the nearby Horn Property. The helicopter was used to mobilize crew daily to the different traverse sites. A total of 480 soils were collected on three different targets.

## **3.0 LOCATION**

The Cantung Focus Regional Program is located just west of the Cantung Mine. The project area is located 200 kilometers north east of the community of Watson Lake. The Project covered three different map sheets NTS 105 H / 14, 105 H / 16 and 105 I / 02.

## **4.0 ACCESS**

The main access point to the Cantung Focus Regional program was 157 kilometers up the Cantung. A helicopter was used to move crew from a small gravel pit located off the Cantung highway.

## **5.0 REGIONAL GEOLOGY**

The regional geology description was taken from the Yukon Geology Web Site.

The Cantung Regional Focus Program covered one rock. The rock unit is known as the Hyland Group. Specifically the Yusezyu Formation which consist of coarse turbiditic clastic rocks , grit and quartz-pebble conglomerate, minor limestone, fine clastic rocks, maroon and green shales; scattered mafic volcanic rock.

## **6.0 WORK PERFORMED / METHODS**

### **6.1 Regional Soil Survey**

The Cantung Regional Focus Program had a total of 16 man days of soil work. In total there was 408 soils collected from five different targets areas.

All soil sample where taken with one meter soil probes and sometime with a prospector pick. We carried both on rocky talus slope. Soil sample location where marked on the ground with orange flagging and recorded in Garmin GPS. About 400-500 grams of soil was collected and place in well mark kraft soil bags.

All samples where brought out to Dawson and air dried repacked in rice bags and sent to Acme Labs in Vancouver. Sample where process with Aqua Regia ICP-MS for 36 elements.

The GPS where downloaded every night and store in a personal computer.

## **7.0 INTERPRETATION**

The regional soil survey intent was to target gold targets such as the Horn, Hy and Fer Properties. Soil traverse where laid out with the intent on working geophysical mag high, mag low contact areas. To my surprise we only found one minor gold anomaly running 35 ppb Au. The regional soil survey did uncover one valley that was running anomalous in tungsten and bismuth (Area C) but surprisingly no gold. At the beginning of the program I thought we might find many gold targets and this would bring down the importance of the old targets found to date but this is exactly opposite we covered 45 kilometer of ground on 16 different traverse and found really nothing. This I feel increase the value and the importance of the known targets. Since we can safely say now that gold is not found every where.

## 8.0 RECOMMENDATION

The only recommendation I could think of is to conduct a follow up in the valley that indicating the tungsten and bismuth soil anomalies. I feel this must be some how intrusive related. There may be a tungsten skarn around.

## 9.0 REFERENCES CITED

The regional geology description was taken from the Yukon Geology Web Site.

## 10.0 COST

Wage 16 man days @ \$250.00 per day	\$4,000.00
Wage 9 man days @ \$250.00 per day (Mobe/demobe) \$2,200.00	
Food Allowance 25 man days @ \$42.5	\$1062.50
Assay Cost 408 soil @ \$18.00 per sample Includes Bags, Flagging, Packing and Drying in Dawson And shipping cost to Vancouver.	\$7,344.00
Transportation Helicopter 9.8 Hours @ \$1259.00	\$12,338.00
Transportation Truck Cost plus gas \$150.00 per day for 7days	\$1,050.00
Report writing	\$300.00
Total	\$28,294.00

## 11.0 QUALIFICATION

I Shawn Ryan located in Dawson City, Yukon work as a professional prospector. I run a small exploration company located in Dawson City.

I have worked in the exploration business for the last 23 years. I worked the first 12 years as a contractor working on numerous projects in the NWT, Ontario, Quebec and the Yukon. I have worked the last 8 years as a local prospector for myself.

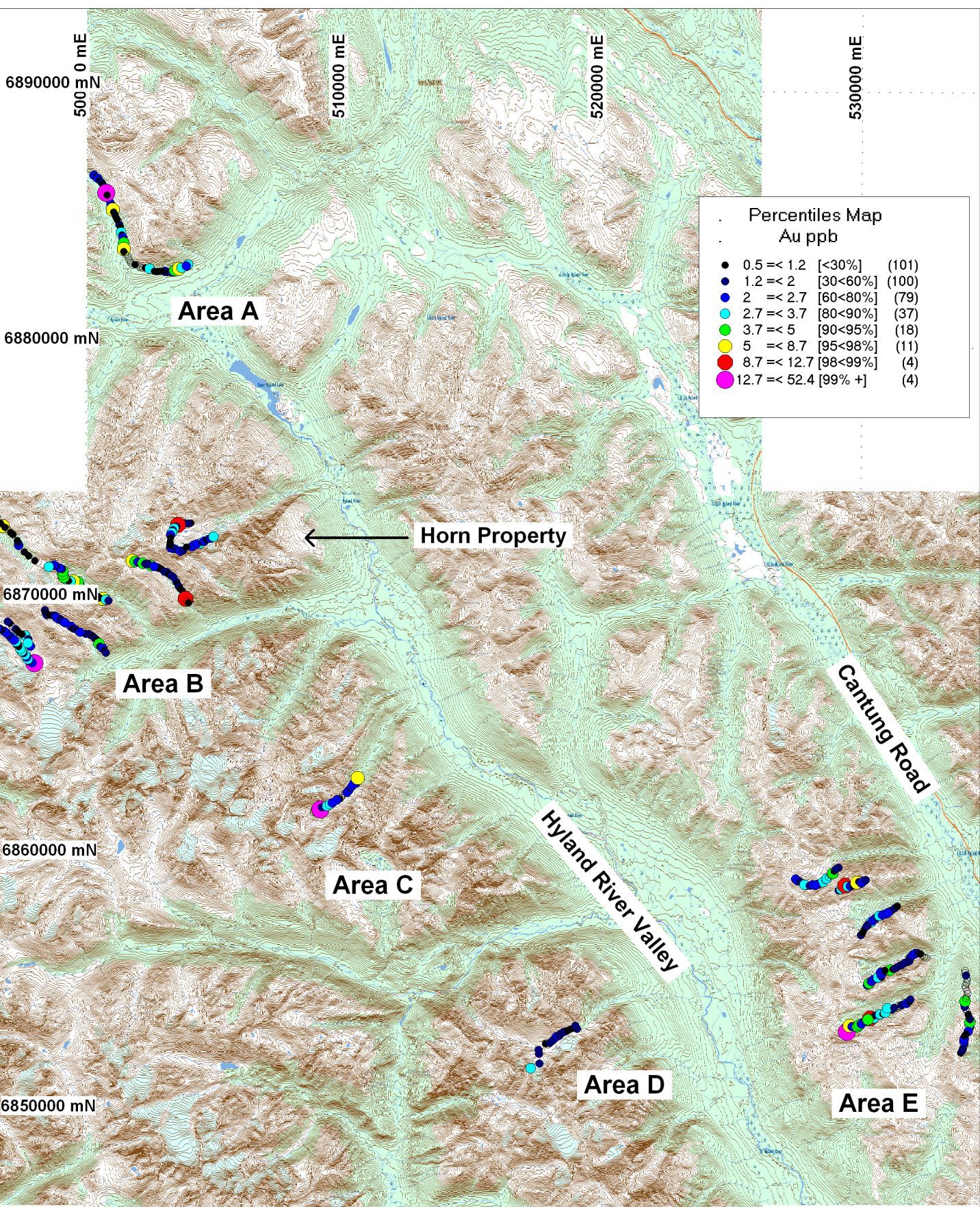
I have being trained to run various geophysical instruments and surveys such as magnetic surveys, max-min surveys, induce polarity surveys and VLF surveys.

I have overseen the entire Hyland West Project and was party chief in charge.

Dated this 29 of January 2007 in Dawson City, Yukon.

Respectfully submitted

Shawn Ryan



**Percentiles Map  
Au ppb**

● 0.5 =< 1.2	[<30%]	(101)
● 1.2 =< 2	[30<60%]	(100)
● 2 =< 2.7	[60<80%]	(79)
● 2.7 =< 3.7	[80<90%]	(37)
● 3.7 =< 5	[90<95%]	(18)
● 5 =< 8.7	[95<98%]	(11)
● 8.7 =< 12.7	[98<99%]	(4)
● 12.7 =< 52.4	[99% +]	(4)

© 2007 Ryanwood Exploration  
 © 2007 Ryanwood Exploration  
 © 2007 Ryanwood Exploration

6890000 mN

6880000 mN

6870000 mN

6860000 mN

6850000 mN

6840000 mN

500000 mE

5100000 mE

5200000 mE

5300000 mE

**Ryanwood Exploration**

---

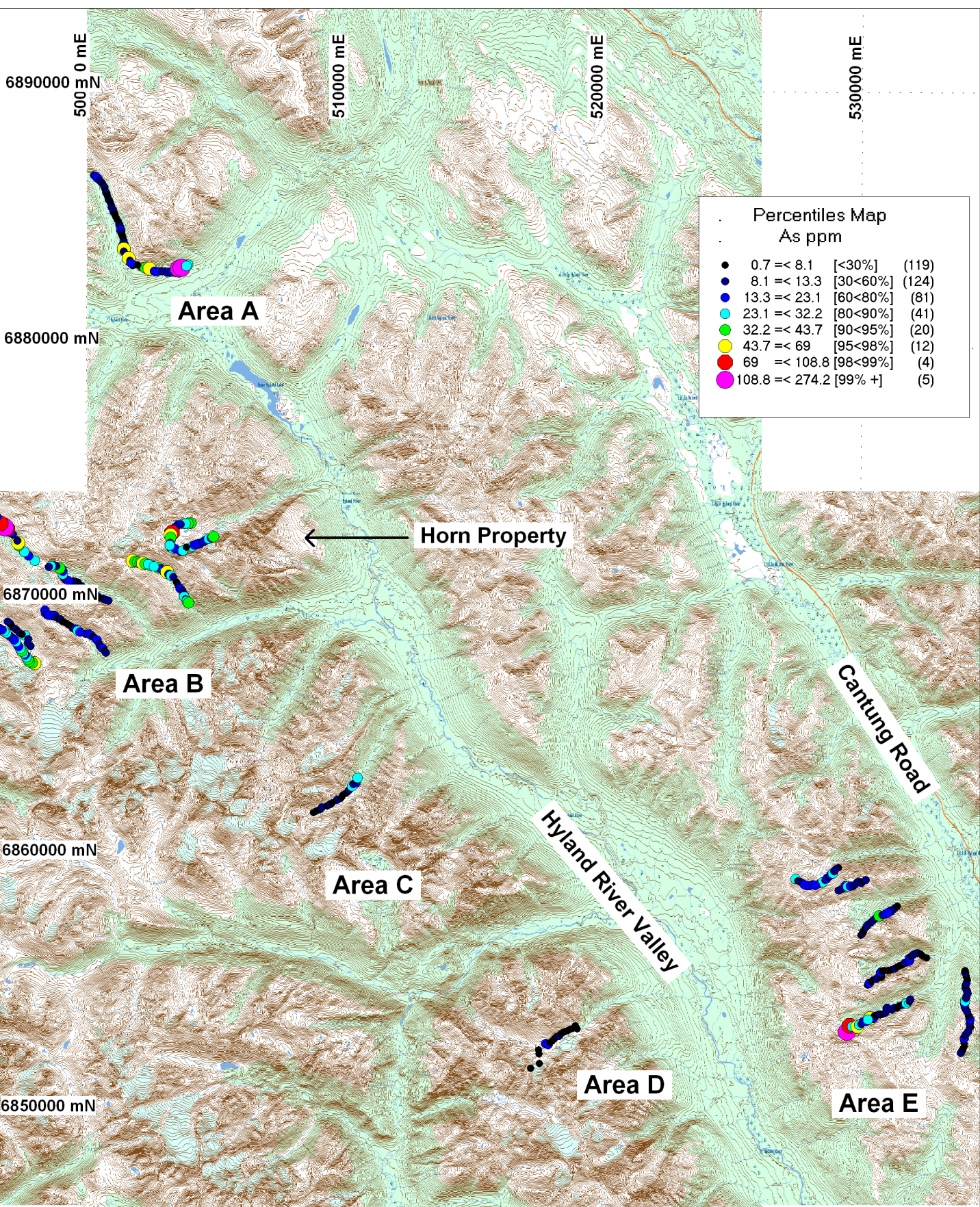
Horn Regional Survey

Gold Soil Survey

Figure 1

---

Date: 11/22/2007  
 Author: S.Ryan  
 Office:  
 Drawing:  
 Scale: 1:200000  
 Projection: UTM Zone 9 (NAD 83)



© 2007 Esri. All rights reserved. © 2007 Canadian Centre for Mapping and Remote Sensing. All rights reserved.

6890000 mN

6880000 mN

6870000 mN

6860000 mN

6850000 mN

6840000 mN

500000 mE

5100000 mE

5200000 mE

5300000 mE

**Ryanwood Exploration**

---

Horn Regional Survey

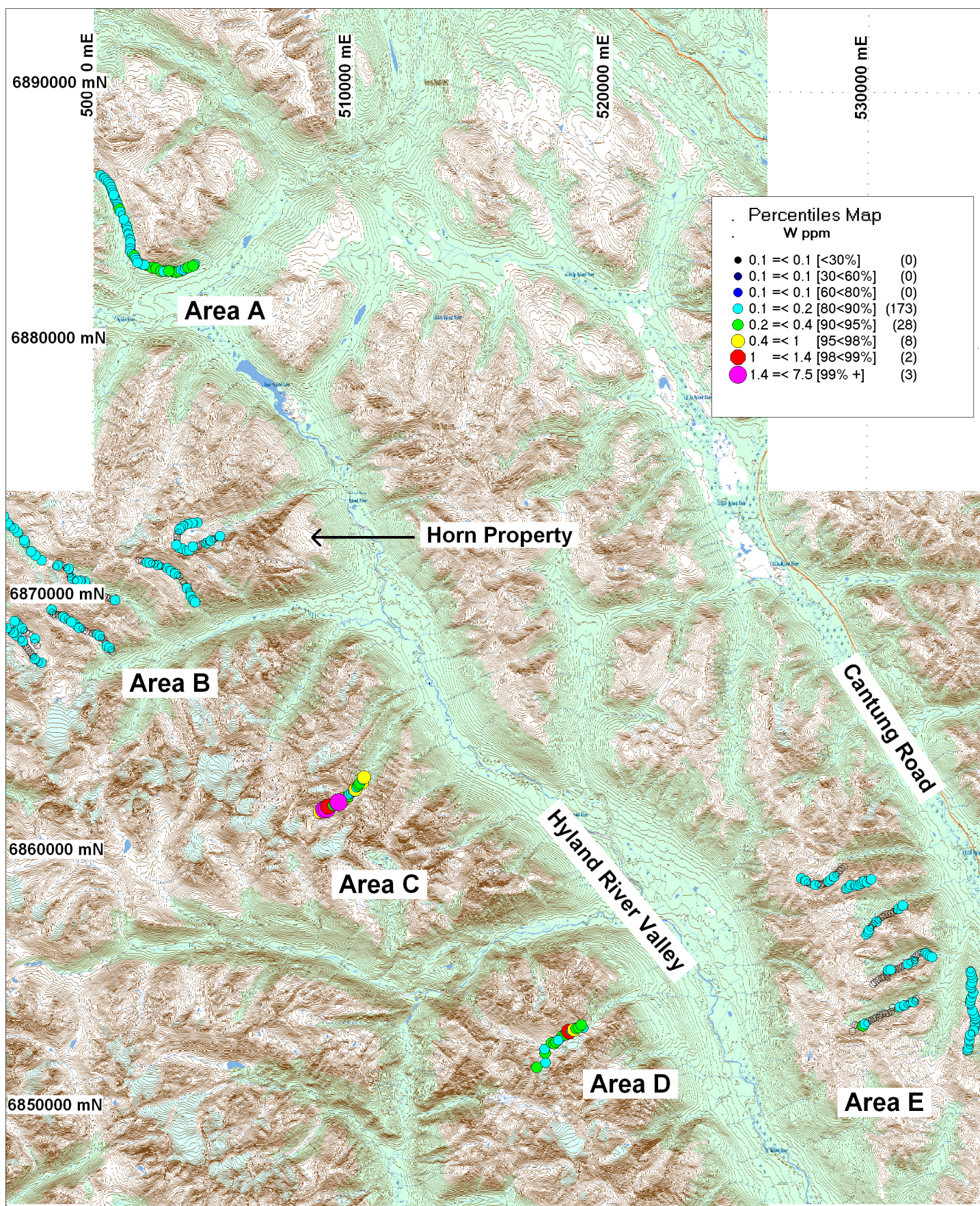
Arsenic Soil Survey

Figure 2

---

Scale: 1:200000      Projection: UTM Zone 9 (NAD 83)





6890000 mN

6880000 mN

6870000 mN

6860000 mN

6850000 mN

6840000 mN

500000 mE

5100000 mE

5200000 mE

5300000 mE

500000 mE

5100000 mE

5200000 mE

5300000 mE

**Ryanwood Exploration**

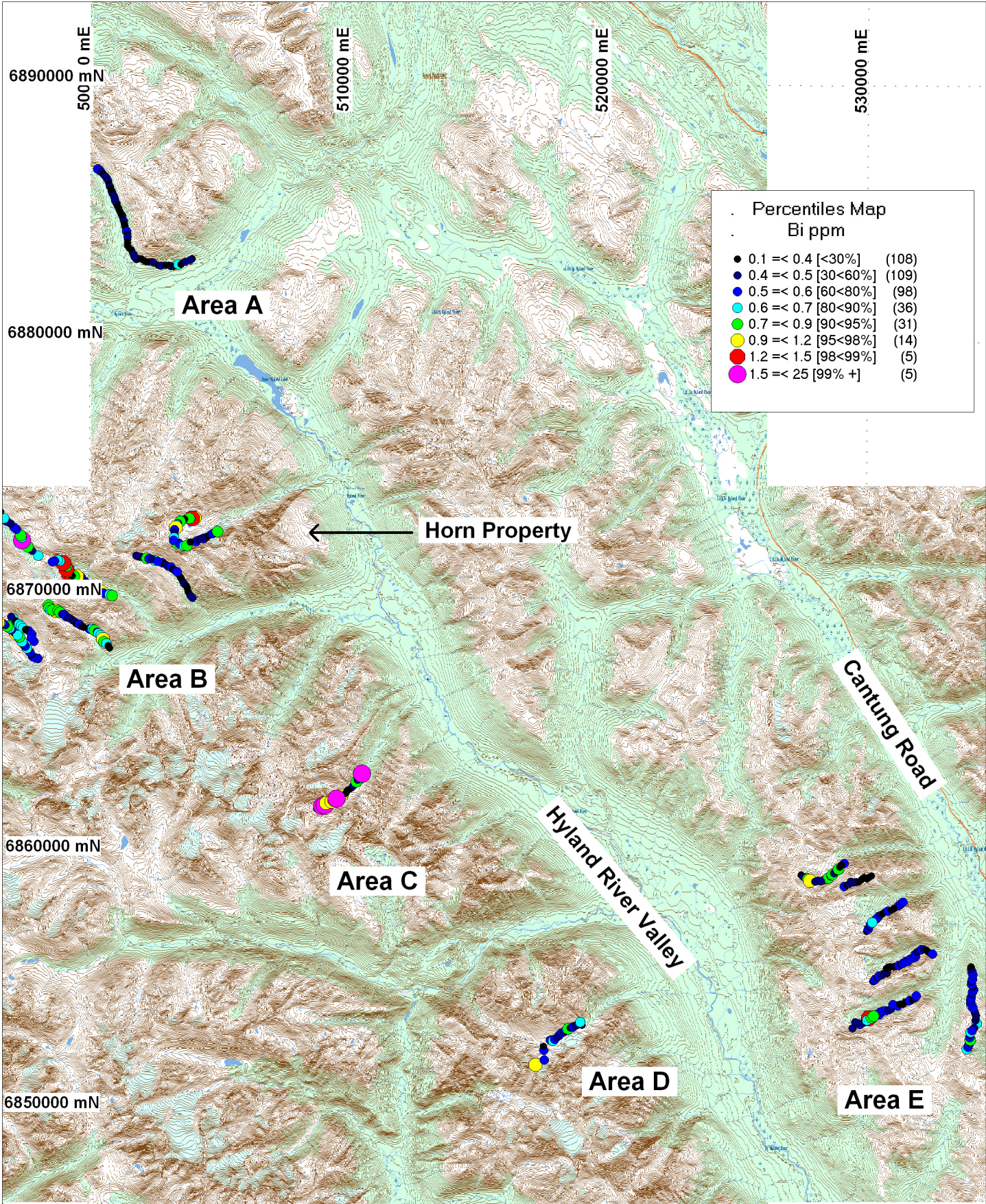
---

Horn Regional Survey

Tungsten Soil Survey

**Figure 3**

Scale: 1:200000      Projection: UTM Zone 9 (NAD 83)



6890000 mN

6880000 mN

6870000 mN

6860000 mN

6850000 mN

6840000 mN

500000 mE

5100000 mE

5200000 mE

5300000 mE

**Ryanwood Exploration**

---

Horn Regional Survey

Bismuth Soil Survey

Figure 4

---

Scale: 1:200000      Projection: UTM Zone 9 (NAD 83)

SAMPLES	GPS ID	Datum	Easting	Northing	Date Time	Elevation	Mo	Cu	Pb	Zn	Ag	Ni	Co
HR-02002	HR02002	NAD83-9V	530339	6855124	28/08/2006 11:25	1761.1	0.4	34.1	32.5	94	0	35.7	14.8
HR-02003	HR02003	NAD83-9V	530416	6855194	28/08/2006 11:33	1731.6	0.3	46.5	35	103	0	42.2	18.2
HR-02004	HR02004	NAD83-9V	530488	6855266	28/08/2006 11:42	1705.7	0.3	26.8	21.8	92	0	30.5	10.2
HR-02005	HR02005	NAD83-9V	530569	6855330	28/08/2006 11:49	1683.4	0.5	41.9	35.6	103	0	39.5	17.3
HR-02006	HR02006	NAD83-9V	530672	6855372	28/08/2006 11:57	1679.4	0.6	26	25.4	61	0	29.8	17.8
HR-02007	HR02007	NAD83-9V	530750	6855423	28/08/2006 12:05	1663.9	0.4	41.6	44.3	67	0.1	25.3	18.8
HR-02008	HR02008	NAD83-9V	530888	6855437	28/08/2006 12:14	1659	0.3	27.2	30.1	60	0	27.1	13.9
HR-02009	HR02009	NAD83-9V	530874	6855530	28/08/2006 12:29	1631.9	0.4	41.9	44.9	90	0.2	43.1	29.9
HR-02010	HR02010	NAD83-9V	530845	6855627	28/08/2006 12:38	1622.8	0.5	32.5	28	72	0	38.1	20
HR-02011	HR02011	NAD83-9V	530919	6855675	28/08/2006 12:45	1619.1	0.3	5.4	5.2	11	0	2.7	1.6
HR-02012	HR02012	NAD83-9V	531019	6855699	28/08/2006 13:01	1613.6	0.4	11.2	9	23	0	7.5	3.5
HR-02013	HR02013	NAD83-9V	531125	6855701	28/08/2006 13:10	1603.2	0.2	12.4	14.2	25	0	16.5	8.6
HR-02014	HR02014	NAD83-9V	531226	6855713	28/08/2006 13:19	1585.9	0.7	9.4	40.2	20	0.2	13.9	12.3
HR-02015	HR02015	NAD83-9V	531322	6855742	28/08/2006 13:28	1565.8	0.3	43.3	27.3	95	0	36.6	19.4
HR-02016	HR02016	NAD83-9V	531404	6855782	28/08/2006 13:37	1568.8	0.4	43	33	86	0	33.8	28.3
HR-02017	HR02017	NAD83-9V	531486	6855840	28/08/2006 13:45	1557.5	0.4	74	33.2	98	0	37.1	20.4
HR-02018	HR02018	NAD83-9V	531575	6855876	28/08/2006 13:53	1548.7	0.9	58.1	29.7	86	0.1	35.7	26.1
HR-02019	HR02019	NAD83-9V	531684	6855918	28/08/2006 14:04	1543.5	1	119.5	20.3	44	0	33.3	31.4
HR-02020	HR02020	NAD83-9V	531786	6856000	28/08/2006 14:31	1533.1	0.4	64.8	33.8	75	0	29.1	21.7
HR-02021	HR02021	NAD83-9V	531875	6856016	28/08/2006 14:38	1522.5	0.8	39.4	49.8	64	0.1	21	19.1
HR-02022	HR02022	NAD83-9V	531963	6856067	28/08/2006 14:51	1509.1	0.6	49.3	36.7	97	0	36	23.1
HR-02023	HR02023	NAD83-9V	531967	6856171	28/08/2006 15:04	1466.1	0.7	35.5	24.5	87	0	32.7	14.1
HR-02024	HR02024	NAD83-9V	532020	6856257	28/08/2006 15:11	1450.8	0.6	28.5	24.1	57	0	18.3	9.4
HR-02025	HR02025	NAD83-9V	532103	6856315	28/08/2006 15:19	1448.4	0.3	33.4	28.9	96	0	36.5	15.3
HR-02026	HR02026	NAD83-9V	532196	6856358	28/08/2006 15:28	1442.9	0.3	36.9	31.6	100	0	37.6	17.2
HR-02027	HR02027	NAD83-9V	532291	6856387	28/08/2006 15:36	1439.9	0.3	35.8	29	94	0	37.3	15.3
HR-02028	HR02028	NAD83-9V	532381	6856351	28/08/2006 15:47	1434.1	0.5	15.9	12.3	33	0	8.6	4.1
HR-02029	HR02029	NAD83-9V	532457	6856282	28/08/2006 16:07	1422.5	0.3	6.4	6.9	10	0	2.9	1.7
HR-02030	HR02030	NAD83-9V	532538	6856230	28/08/2006 16:19	1410	0.1	1.7	2.3	5	0	1	2.2
HR-02031	HR02031	NAD83-9V	532633	6856198	28/08/2006 16:33	1397.5	0.5	26.6	17.2	56	0	16.6	9.6
HR-02132	HR02132	NAD83-9V	497194	6868545	28/08/2006 12:26	1592	0.5	80.4	61.2	142	0.1	70.6	43.6
HR-02133	HR02133	NAD83-9V	497118	6868614	28/08/2006 12:36	1578.3	0.6	64.3	43.2	103	0	48.2	32.5
HR-02134	HR02134	NAD83-9V	497037	6868679	28/08/2006 12:47	1580.4	0.4	44.6	29.5	83	0	30.8	14.1
HR-02135	HR02135	NAD83-9V	496964	6868747	28/08/2006 12:56	1570.3	0.3	73	49	96	0	40.8	26.3
HR-02136	HR02136	NAD83-9V	496875	6868815	28/08/2006 13:05	1560	1	103.5	160.5	130	0	50.5	82.4
HR-02137	HR02137	NAD83-9V	496790	6868867	28/08/2006 13:14	1556.6	0.4	35.8	33.1	147	0	32.8	16.7
HR-02138	HR02138	NAD83-9V	496706	6868922	28/08/2006 13:23	1546.9	0.5	49.4	37.8	113	0	32.1	16.6
HR-02139	HR02139	NAD83-9V	496603	6868952	28/08/2006 13:55	1545	0.3	53.4	37.9	129	0	40	20.1
HR-02140	HR02140	NAD83-9V	496501	6868979	28/08/2006 14:08	1540.2	0.8	71.4	47.3	127	0	55.8	39.1
HR-02141	HR02141	NAD83-9V	496403	6869004	28/08/2006 14:18	1533.1	0.6	39.7	43.1	119	0	37.6	29.5
HR-02142	HR02142	NAD83-9V	497012	6869201	28/08/2006 14:53	1510.6	1.4	24.5	32.1	57	0	12.5	11.6
HR-02143	HR02143	NAD83-9V	497087	6869128	28/08/2006 15:01	1508.8	1	27.7	36.9	64	0	17	9.8
HR-02144	HR02144	NAD83-9V	497155	6869047	28/08/2006 15:08	1515.8	0.3	16.2	15.5	19	0	5.1	3.4
HR-02145	HR02145	NAD83-9V	497213	6868977	28/08/2006 15:16	1510.6	0.5	14.4	16.4	40	0	10.5	5.6
HR-02146	HR02146	NAD83-9V	497311	6868916	28/08/2006 15:26	1515.8	1	42	43.5	97	0	36.7	25.5
HR-02147	HR02147	NAD83-9V	497382	6868840	28/08/2006 15:34	1521	0.9	30.9	41.4	89	0.2	27.1	19.2
HR-02148	HR02148	NAD83-9V	497461	6868756	28/08/2006 15:42	1532.8	0.7	36.4	32.7	124	0	32.1	16.8
HR-02149	HR02149	NAD83-9V	497569	6868703	28/08/2006 16:00	1560	0.4	18.1	17.3	61	0	19.1	7.5
HR-02150	HR02150	NAD83-9V	497690	6868651	28/08/2006 16:11	1554.5	0.7	34.6	42	98	0	22.5	21.2
HR-02151	HR02151	NAD83-9V	531220	6858023	28/08/2006 14:31	1459.1	0.6	21.8	19.5	34	0	18.8	8.8
HR-02152	HR02152	NAD83-9V	531315	6858068	28/08/2006 14:37	1460	0.5	33.4	46.6	88	0	26.9	17.8
HR-02153	HR02153	NAD83-9V	531394	6858140	28/08/2006 14:47	1445.1	0.6	46.8	48.8	102	0	36.9	22.3
HR-02154	HR02154	NAD83-9V	531477	6858205	28/08/2006 14:55	1421.6	0.5	62	46.9	127	0.1	50.9	24.6
HR-02162	HR02162	NAD83-9V	529555	6853292	28/08/2006 11:10	1793.7	1.3	47.7	35.6	120	0.1	49.5	32.1
HR-02163	HR02163	NAD83-9V	529653	6853524	28/08/2006 11:28	1723.9	0.9	44	50.1	97	0.2	48.8	19.7
HR-02164	HR02164	NAD83-9V	529751	6853499	28/08/2006 11:36	1709	0.4	31.4	34.3	77	0	30.3	18
HR-02165	HR02165	NAD83-9V	529841	6853456	28/08/2006 11:45	1698.3	0.9	50.8	43.8	94	0	44.9	22.6

SAMPLES	Mn	Fe	As	U	Au	Th	Sr	Cd	Sb	Bi	V	Ca	P	La	Cr	Mg	Ba	Ti	B	Al
HR-02002	487	3.87	7	1.2	2.6	10.5	10	0.1	0.6	0.4	9	0.09	0.03	24	20	0.72	35	0.001	1	1.79
HR-02003	497	3.77	14.2	1	4.1	17.8	15	0.1	1.1	0.5	8	0.13	0.048	29	19	0.69	39	0.001	0	1.76
HR-02004	353	3.57	6.6	1.1	2.6	9.5	7	0.1	0.4	0.4	8	0.06	0.047	21	20	0.63	40	0.001	0	1.66
HR-02005	568	3.96	7.9	1.2	2.1	14.3	13	0.1	0.4	0.5	9	0.12	0.047	25	23	0.83	20	0.001	0	1.76
HR-02006	705	2.99	8.7	1.2	1.3	6.1	7	0.1	0.9	0.4	8	0.06	0.066	23	15	0.44	30	0.003	0	1.33
HR-02007	892	2.62	9.7	1.9	3.5	5.7	17	0.1	1	0.4	8	0.28	0.06	15	12	0.41	39	0.004	1	1.49
HR-02008	881	2.84	4.3	1.1	0.7	7.8	13	0.1	0.4	0.3	7	0.19	0.066	29	13	0.45	38	0.008	0	1.2
HR-02009	715	3.79	7.5	2	2.1	13.2	19	0.1	0.7	0.4	9	0.26	0.051	32	18	0.68	35	0.003	0	1.75
HR-02010	545	3.1	13.5	1.2	2	5.9	9	0.1	1.5	0.3	7	0.13	0.043	24	14	0.41	35	0.001	0	1.39
HR-02011	91	0.6	1.3	0.3	0	0.2	5	0	0.2	0.1	9	0.05	0.034	6	2	0.04	21	0.011	0	0.45
HR-02012	139	1.18	1.9	0.5	0.8	0.9	4	0	0.2	0.2	7	0.03	0.041	10	6	0.12	29	0.006	0	0.68
HR-02013	881	2.31	2	0.5	2	4.1	33	0.1	0.1	0.1	5	0.84	0.044	27	7	0.32	33	0.006	0	0.93
HR-02014	2076	2.32	6.8	0.6	4.9	6.3	133	0.1	1	0.2	0	7.46	0.049	11	7	0.2	29	0.002	1	0.48
HR-02015	666	4.05	5	1.4	0.9	14.3	11	0.1	0.3	0.5	9	0.14	0.049	30	22	0.79	24	0.001	0	1.82
HR-02016	847	3.63	9.1	2.2	1.7	13.8	11	0	0.6	0.4	7	0.1	0.05	21	18	0.68	22	0.001	0	1.61
HR-02017	664	4.2	6.3	2.3	1.5	12.3	15	0.1	0.4	0.5	9	0.11	0.054	26	20	0.74	26	0.001	0	1.91
HR-02018	872	3.84	6.3	1.9	1.8	7.6	15	0.1	0.3	0.5	9	0.17	0.059	15	23	0.67	28	0.002	1	1.78
HR-02019	853	3.22	7.6	3	1.6	8.6	16	0.1	0.5	0.5	8	0.22	0.085	11	19	0.54	30	0.003	1	1.35
HR-02020	650	3.6	11.1	2.5	1.8	14.2	14	0	0.7	0.5	6	0.15	0.05	14	14	0.54	29	0.002	0	1.49
HR-02021	633	2.56	8.4	2.1	0.8	4.6	7	0.1	0.5	0.4	7	0.07	0.079	8	13	0.38	19	0.004	0	1.1
HR-02022	787	3.93	13.8	2.3	1.7	14.7	15	0.1	1.2	0.5	7	0.17	0.056	19	16	0.53	28	0.001	0	1.5
HR-02023	361	3.81	14	1.8	1.2	11.8	13	0.1	1.2	0.5	7	0.17	0.038	15	16	0.51	32	0.001	0	1.45
HR-02024	408	2.74	6.9	6.8	1.5	2.8	19	0	0.5	0.4	9	0.17	0.083	8	13	0.3	26	0.004	0	1.14
HR-02025	465	3.78	8.5	1.5	2	12.8	19	0	0.6	0.4	10	0.18	0.059	22	21	0.73	17	0.001	0	1.54
HR-02026	389	3.89	8.7	2.2	2.2	12.5	23	0	0.5	0.5	10	0.23	0.06	18	22	0.79	17	0.001	0	1.62
HR-02027	350	3.75	9.2	2	1.9	12.4	18	0	0.5	0.4	10	0.17	0.063	23	21	0.77	23	0.001	0	1.63
HR-02028	121	2.3	6.8	0.8	0.7	3.5	3	0	0.4	0.3	9	0.01	0.037	13	7	0.11	22	0.004	0	0.9
HR-02029	19	0.54	2	0.4	0	0.4	5	0	0.3	0.2	5	0.01	0.032	5	2	0.01	11	0.003	0	0.34
HR-02030	157	0.29	0	0.2	0	0	7	0.1	0	0	6	0.05	0.029	1	0	0.02	13	0.015	0	0.29
HR-02031	702	2.77	2.2	0.7	0	2.5	4	0	0.3	0.5	12	0.03	0.055	12	15	0.36	21	0.004	0	1.03
HR-02132	1695	5.45	23	1.3	3.4	14.8	19	0.1	0.7	0.9	12	0.36	0.077	30	19	0.71	15	0.002	0	1.66
HR-02133	688	4.06	17.1	0.7	2.4	14.3	17	0.1	0.6	0.5	15	0.2	0.045	29	28	0.82	33	0.002	0	1.91
HR-02134	447	3.49	12.3	0.9	1.6	8.8	5	0	0.6	0.4	11	0.02	0.053	25	20	0.62	44	0.001	0	1.69
HR-02135	753	4.27	23.6	0.9	2.4	11.6	5	0	0.8	0.6	13	0.04	0.057	28	19	0.61	30	0.003	0	1.58
HR-02136	1730	4.38	27.4	0.9	2.6	15.3	8	0.1	0.7	0.8	18	0.04	0.04	36	32	0.89	41	0.001	0	2.26
HR-02137	597	3.6	16.2	0.8	1	9.7	8	0.1	0.5	0.4	12	0.11	0.057	26	18	0.58	34	0.003	1	1.4
HR-02138	633	3.5	14.5	2.1	1.5	8.7	5	0.1	0.5	0.5	13	0.04	0.071	22	18	0.58	38	0.003	0	1.59
HR-02139	577	3.84	18.5	1.1	2	13.1	15	0.1	0.7	0.6	13	0.2	0.055	33	20	0.69	32	0.003	0	1.63
HR-02140	987	4.37	21.8	2.3	1.4	9.5	7	0.1	1.1	0.9	10	0.05	0.072	27	15	0.44	40	0.002	0	1.29
HR-02141	1153	3.95	17.4	1.4	0.7	6.2	4	0.1	1	0.6	18	0.02	0.089	23	20	0.55	29	0.01	0	1.78
HR-02142	597	2.04	8.3	5.6	1.4	0.7	12	0	0.4	0.4	15	0.08	0.086	17	12	0.24	34	0.009	1	1.19
HR-02143	478	2.67	13.1	1.7	1.1	4	5	0	0.4	0.6	15	0.02	0.126	30	18	0.43	20	0.005	0	1.42
HR-02144	155	0.92	2.3	0.7	0	0.4	4	0.1	0.1	0.2	8	0.03	0.052	9	6	0.09	17	0.009	0	0.88
HR-02145	467	2.11	5.3	0.9	0	0.5	4	0.1	0.3	0.3	10	0.02	0.104	13	11	0.18	27	0.002	0	0.83
HR-02146	974	3.59	13	1.9	1.7	10.8	10	0	0.8	0.6	10	0.07	0.059	34	23	0.65	22	0.002	0	1.63
HR-02147	847	2.86	6.1	2.2	0.6	4.2	13	0.1	0.4	0.6	11	0.13	0.117	20	21	0.53	27	0.003	0	1.55
HR-02148	559	3.71	10.5	2.2	0.8	9.5	13	0.1	0.5	0.6	12	0.07	0.064	34	21	0.67	36	0.002	0	1.8
HR-02149	166	2.33	4.9	3.5	0.9	4.1	35	0	0.3	0.3	10	0.23	0.058	19	14	0.45	34	0.006	0	1.48
HR-02150	872	3.01	26.8	2	2.7	4.8	11	0.1	0.6	0.5	9	0.06	0.087	23	13	0.42	31	0.003	0	1.38
HR-02151	537	1.81	13.7	0.8	1.7	3.7	10	0	0.5	0.2	9	0.15	0.055	14	14	0.27	26	0.009	0	0.89
HR-02152	700	3.46	10.8	1.3	1.1	6.1	11	0	0.5	0.5	11	0.14	0.059	20	19	0.56	38	0.002	0	1.65
HR-02153	906	3.81	13.2	2.1	1.9	14.1	9	0	0.5	0.5	10	0.12	0.042	33	23	0.74	41	0.002	0	1.71
HR-02154	901	4.04	6.4	2	1.1	9.6	15	0.1	0.5	0.5	12	0.27	0.085	29	18	0.56	37	0.005	1	1.5
HR-02162	512	3.65	111.6	2.6	12.7	15.6	17	0.1	0.9	0.4	10	0.21	0.04	24	26	0.65	27	0.001	0	1.68
HR-02163	781	4.11	84.9	1.2	7.2	16.1	17	0.1	2.1	0.4	9	0.22	0.048	20	23	0.54	24	0.001	1	1.39
HR-02164	459	2.77	27.9	1.2	2.4	6.6	11	0.1	0.5	0.4	11	0.1	0.052	12	17	0.51	38	0.003	0	1.63
HR-02165	538	4.31	17.5	2.5	0.7	8.7	22	0	0.8	0.5	14	0.2	0.066	23	25	0.7	52	0.001	0	1.91

SAMPLES	Na	K	W	Hg	Sc	Tl	S	Ga	Se	Analysis:	Acme file #
HR-02002	0.003	0.03	0	0.02	2.1	0.1	0	5	0	GROUP 1DX - 15.0 GM	A607419
HR-02003	0.003	0.05	0	0.03	3.5	0	0	4	0	GROUP 1DX - 15.0 GM	A607419
HR-02004	0.002	0.03	0	0.02	1.7	0	0	5	0	GROUP 1DX - 15.0 GM	A607419
HR-02005	0.002	0.03	0	0.02	2.6	0	0	5	0	GROUP 1DX - 15.0 GM	A607419
HR-02006	0.007	0.03	0	0.02	0.9	0	0	4	0	GROUP 1DX - 15.0 GM	A607419
HR-02007	0.011	0.04	0	0.03	1.2	0.1	0	4	0	GROUP 1DX - 15.0 GM	A607419
HR-02008	0.008	0.03	0	0.03	2.3	0	0	3	0	GROUP 1DX - 15.0 GM	A607419
HR-02009	0.008	0.04	0	0.02	2.1	0	0	5	0	GROUP 1DX - 15.0 GM	A607419
HR-02010	0.006	0.03	0	0.01	0.9	0	0	4	0	GROUP 1DX - 15.0 GM	A607419
HR-02011	0.014	0.02	0.1	0.01	0.2	0	0	2	0	GROUP 1DX - 15.0 GM	A607419
HR-02012	0.01	0.02	0.1	0.01	0.4	0	0	3	0	GROUP 1DX - 15.0 GM	A607419
HR-02013	0.011	0.02	0	0.01	2	0	0	2	0	GROUP 1DX - 15.0 GM	A607419
HR-02014	0.003	0.02	0	0.01	2.1	0	0.11	1	0	GROUP 1DX - 15.0 GM	A607419
HR-02015	0.003	0.03	0	0	1.4	0	0	5	0	GROUP 1DX - 15.0 GM	A607419
HR-02016	0.002	0.03	0	0.02	1.5	0	0	4	0	GROUP 1DX - 15.0 GM	A607419
HR-02017	0.002	0.04	0	0.01	1.4	0	0	5	0	GROUP 1DX - 15.0 GM	A607419
HR-02018	0.006	0.06	0	0.02	1.1	0	0	5	0	GROUP 1DX - 15.0 GM	A607419
HR-02019	0.005	0.06	0.1	0.05	1.3	0.1	0	4	0	GROUP 1DX - 15.0 GM	A607419
HR-02020	0.003	0.04	0	0.01	1.6	0	0	3	0	GROUP 1DX - 15.0 GM	A607419
HR-02021	0.008	0.04	0.1	0.04	0.8	0	0.06	3	0	GROUP 1DX - 15.0 GM	A607419
HR-02022	0.003	0.04	0	0.01	2	0	0	4	0	GROUP 1DX - 15.0 GM	A607419
HR-02023	0.003	0.04	0	0.01	1.7	0.1	0	3	0	GROUP 1DX - 15.0 GM	A607419
HR-02024	0.009	0.04	0	0.03	0.8	0	0	4	0	GROUP 1DX - 15.0 GM	A607419
HR-02025	0.003	0.02	0	0.01	2.2	0	0	5	0	GROUP 1DX - 15.0 GM	A607419
HR-02026	0.002	0.02	0	0.01	1.9	0	0	5	0	GROUP 1DX - 15.0 GM	A607419
HR-02027	0.002	0.02	0	0.02	2	0	0	5	0	GROUP 1DX - 15.0 GM	A607419
HR-02028	0.01	0.04	0.1	0.01	0.6	0.1	0	3	0	GROUP 1DX - 15.0 GM	A607419
HR-02029	0.009	0.02	0.1	0.01	0.2	0	0	2	0	GROUP 1DX - 15.0 GM	A607419
HR-02030	0.021	0.02	0.1	0.01	0.1	0	0	2	0	GROUP 1DX - 15.0 GM	A607419
HR-02031	0.007	0.03	0.1	0.01	0.6	0	0	5	0	GROUP 1DX - 15.0 GM	A607419
HR-02132	0.002	0.03	0	0.01	3.1	0	0	4	0	GROUP 1DX - 15.0 GM	A607419
HR-02133	0.003	0.09	0.1	0	1.8	0.1	0	5	0	GROUP 1DX - 15.0 GM	A607419
HR-02134	0.003	0.06	0	0	1.2	0.1	0	4	0	GROUP 1DX - 15.0 GM	A607419
HR-02135	0.002	0.04	0.1	0.02	1.5	0	0	4	0	GROUP 1DX - 15.0 GM	A607419
HR-02136	0.003	0.04	0	0.02	1.6	0	0	6	0	GROUP 1DX - 15.0 GM	A607419
HR-02137	0.003	0.05	0	0.02	1.3	0	0	3	0	GROUP 1DX - 15.0 GM	A607419
HR-02138	0.004	0.06	0.1	0.02	1.2	0.1	0	4	0	GROUP 1DX - 15.0 GM	A607419
HR-02139	0.003	0.06	0	0.01	1.7	0	0	4	0	GROUP 1DX - 15.0 GM	A607419
HR-02140	0.004	0.04	0	0.02	1.8	0	0	3	0	GROUP 1DX - 15.0 GM	A607419
HR-02141	0.003	0.04	0.1	0.01	1.1	0.1	0	4	0.5	GROUP 1DX - 15.0 GM	A607419
HR-02142	0.012	0.03	0.1	0.02	0.5	0.1	0.08	4	0	GROUP 1DX - 15.0 GM	A607419
HR-02143	0.007	0.04	0.1	0.02	0.7	0.1	0	5	0.5	GROUP 1DX - 15.0 GM	A607419
HR-02144	0.014	0.02	0.1	0.02	0.2	0	0	3	0	GROUP 1DX - 15.0 GM	A607419
HR-02145	0.007	0.04	0.1	0.04	0.2	0	0	4	0	GROUP 1DX - 15.0 GM	A607419
HR-02146	0.004	0.04	0.1	0.02	1.3	0	0	4	0	GROUP 1DX - 15.0 GM	A607419
HR-02147	0.006	0.04	0	0.02	0.9	0	0.09	4	0	GROUP 1DX - 15.0 GM	A607419
HR-02148	0.004	0.05	0	0.01	1.4	0	0	5	0	GROUP 1DX - 15.0 GM	A607419
HR-02149	0.011	0.03	0	0.01	0.8	0	0	4	0	GROUP 1DX - 15.0 GM	A607419
HR-02150	0.006	0.03	0	0.01	0.8	0	0	4	0	GROUP 1DX - 15.0 GM	A607419
HR-02151	0.017	0.03	0	0.02	1.4	0	0	2	0	GROUP 1DX - 15.0 GM	A607419
HR-02152	0.007	0.03	0.1	0.01	1.1	0	0	5	0	GROUP 1DX - 15.0 GM	A607419
HR-02153	0.003	0.03	0	0.01	1.9	0	0	5	0	GROUP 1DX - 15.0 GM	A607419
HR-02154	0.006	0.06	0.1	0.04	2.3	0	0	4	0	GROUP 1DX - 15.0 GM	A607419
HR-02162	0.004	0.04	0	0.01	1.6	0	0	4	0	GROUP 1DX - 15.0 GM	A607419
HR-02163	0.003	0.04	0	0.03	3	0.1	0	3	0	GROUP 1DX - 15.0 GM	A607419
HR-02164	0.011	0.03	0	0.01	1	0.1	0	4	0	GROUP 1DX - 15.0 GM	A607419
HR-02165	0.004	0.03	0	0.02	2.8	0.1	0	5	0.5	GROUP 1DX - 15.0 GM	A607419

SAMPLES	GPS ID	Datum	Easting	Northing	Date Time	Elevation	Mo	Cu	Pb	Zn	Ag	Ni	Co
HR-02166	HR02166	NAD83-9V	529958	6853491	28/08/2006 11:53	1681.6	0.9	50	30.2	98	0	90.5	25.4
HR-02167	HR02167	NAD83-9V	530028	6853570	28/08/2006 12:03	1645.3	0.3	24.1	16.7	56	0	26.1	8.7
HR-02168	HR02168	NAD83-9V	530111	6853595	28/08/2006 12:12	1625.2	0.7	63.9	40.7	84	0.1	33.2	23.6
HR-02169	HR02169	NAD83-9V	530185	6853687	28/08/2006 12:24	1619.7	0.8	79.6	98.4	89	0.1	34.8	32.5
HR-02170	HR02170	NAD83-9V	530287	6853698	28/08/2006 12:33	1611.8	0.9	93.8	92	118	0	51	42.4
HR-02171	HR02171	NAD83-9V	530369	6853767	28/08/2006 12:49	1597.5	0.9	66.9	61.7	118	0	49.9	29.4
HR-02172	HR02172	NAD83-9V	530456	6853832	28/08/2006 12:58	1582.5	0.7	30.8	33.3	85	0	33.2	17.6
HR-02173	HR02173	NAD83-9V	530583	6853834	28/08/2006 13:08	1585	0.5	45.1	44.8	107	0.1	41.6	25
HR-02174	HR02174	NAD83-9V	530623	6853926	28/08/2006 13:16	1590.8	0.6	45.9	42.7	104	0.1	44.1	25.6
HR-02175	HR02175	NAD83-9V	530718	6853969	28/08/2006 13:34	1551.7	0.6	41.1	43.3	106	0.1	41.1	22.2
HR-02176	HR02176	NAD83-9V	530832	6853980	28/08/2006 13:48	1560	0.4	53.4	49.6	107	0.2	36.8	27.1
HR-02177	HR02177	NAD83-9V	530949	6854001	28/08/2006 13:57	1546.3	0.4	25.5	23.1	62	0	22.7	12.7
HR-02178	HR02178	NAD83-9V	531048	6854056	28/08/2006 14:07	1539.5	0.6	30.6	31.7	59	0.1	34.4	18.8
HR-02179	HR02179	NAD83-9V	531116	6854218	28/08/2006 14:18	-9999	0.5	36.9	36.4	85	0.1	38.3	18.1
HR-02180	HR02180	NAD83-9V	531116	6854218	28/08/2006 14:27	-9999	0.4	39.9	34.3	80	0.1	39.3	20.4
HR-02181	HR02181	NAD83-9V	531290	6854168	28/08/2006 14:37	1522.8	0.6	37.6	37.8	92	0	35.3	18.2
HR-02182	HR02182	NAD83-9V	531380	6854248	28/08/2006 14:54	1510.9	0.4	12.5	17.5	32	0	20.7	9.9
HR-02183	HR02183	NAD83-9V	531491	6854242	28/08/2006 15:06	1517.6	0.4	21.2	20.2	56	0	21.1	10.5
HR-02184	HR02184	NAD83-9V	531570	6854308	28/08/2006 15:20	1481.3	0.3	20.6	23	42	0	13.6	7.2
HR-02185	HR02185	NAD83-9V	531673	6854339	28/08/2006 15:27	1477.4	0.3	22.3	23.4	56	0	20.1	10.1
HR-02186	HR02186	NAD83-9V	531756	6854372	28/08/2006 15:37	1468.5	0.5	39.6	52.3	88	0	21.8	12.7
HR-02187	HR02187	NAD83-9V	531862	6854411	28/08/2006 15:51	1467.3	0.5	26	33.7	46	0.2	32.5	21.4
HR-02188	HR02188	NAD83-9V	531911	6854438	28/08/2006 15:58	1462.1	0.1	2.6	1.8	5	0	0.9	0.6
HR-02189	HR02189	NAD83-9V	531979	6854475	28/08/2006 16:07	1449.9	0.4	31.5	32.3	84	0	33.2	23.2
HR-02190	HR02190	NAD83-9V	532005	6854570	28/08/2006 16:25	1431.6	0.5	52.8	50.6	87	0	37.9	25.9
HR-02201	HR02201	NAD83-9V	498055	6867580	28/08/2006 9:57	1645	1.1	46	35.5	97	0	48.5	27.3
HR-02202	HR02202	NAD83-9V	497955	6867601	28/08/2006 10:14	1634	0.5	44.3	33.9	82	0	26.2	11.7
HR-02203	HR02203	NAD83-9V	497851	6867648	28/08/2006 10:23	1636.2	0.5	36.6	29.5	87	0	38.1	17
HR-02204	HR02204	NAD83-9V	497785	6867726	28/08/2006 10:30	1634.3	0.6	40.8	30	80	0.1	39.3	18.7
HR-02205	HR02205	NAD83-9V	497738	6867818	28/08/2006 10:38	1628.9	0.4	46.8	32	96	0	36.3	16.2
HR-02206	HR02206	NAD83-9V	497691	6867909	28/08/2006 10:46	1617.9	0.6	22.2	24.4	61	0	18.6	10.4
HR-02207	HR02207	NAD83-9V	497627	6867977	28/08/2006 10:55	1625.2	0.9	61.8	44.5	91	0	55.3	29.3
HR-02208	HR02208	NAD83-9V	497552	6868049	28/08/2006 11:04	1628.2	0.5	56.5	37	103	0	46.6	24.4
HR-02209	HR02209	NAD83-9V	497495	6868136	28/08/2006 11:11	1623.7	0.5	38.4	36.3	89	0	32.9	13.9
HR-02210	HR02210	NAD83-9V	497440	6868228	28/08/2006 11:21	1619.7	0.4	38.9	42.2	95	0	36.8	16.8
HR-02211	HR02211	NAD83-9V	497392	6868317	28/08/2006 11:31	1612.1	0.8	54.9	48.3	119	0	49.9	22.2
HR-02212	HR02212	NAD83-9V	497337	6868411	28/08/2006 11:41	1603.2	0.6	70.3	58.5	125	0.2	67.1	37.2
HR-02213	HR02213	NAD83-9V	497266	6868473	28/08/2006 12:19	1583.4	0.7	64.7	41.4	119	0	51	22.3
HR-02214	HR02214	NAD83-9V	533968	6852483	28/08/2006 10:49	1866.6	0.6	52.7	39.5	79	0	32.7	18.5
HR-02215	HR02215	NAD83-9V	534017	6852567	28/08/2006 11:02	1865.7	0.5	42.3	32.6	100	0	34.2	17.2
HR-02216	HR02216	NAD83-9V	534057	6852664	28/08/2006 11:08	1857.8	0.5	33.5	21.6	64	0	32.3	15.8
HR-02217	HR02217	NAD83-9V	534094	6852753	28/08/2006 11:14	1861.1	0.6	30.9	9.9	78	0	33.9	15.4
HR-02218	HR02218	NAD83-9V	534093	6852853	28/08/2006 11:22	1875.7	0.7	112.5	7.3	117	0.1	40.4	21.4
HR-02219	HR02219	NAD83-9V	534074	6852946	28/08/2006 11:30	1862.9	0.6	55.8	19.6	85	0	33.8	17.5
HR-02220	HR02220	NAD83-9V	534105	6853051	28/08/2006 11:36	1859	0.6	32.4	36.2	127	0	31.9	16.9
HR-02221	HR02221	NAD83-9V	534112	6853150	28/08/2006 11:43	1851.1	0.7	47.4	47.6	92	0.1	41.3	38.3
HR-02222	HR02222	NAD83-9V	534166	6853233	28/08/2006 11:49	1850.4	0.7	29.5	44.9	94	0	30.9	14.7
HR-02223	HR02223	NAD83-9V	534244	6853320	28/08/2006 11:57	1854.4	0.5	29.5	33.7	71	0	30	13.1
HR-02224	HR02224	NAD83-9V	534287	6853409	28/08/2006 12:02	1848.3	0.6	20.8	14	44	0	14.8	7.5
HR-02225	HR02225	NAD83-9V	534342	6853492	28/08/2006 12:11	1830.6	0.5	48.4	33.5	101	0.2	37.6	29.1
HR-02226	HR02226	NAD83-9V	534294	6853618	28/08/2006 12:23	1823	0.9	31.4	22.7	72	0	28.9	12.8
HR-02227	HR02227	NAD83-9V	534311	6853713	28/08/2006 12:32	1809	0.5	12.7	28.8	71	0	18.1	13.6
HR-02228	HR02228	NAD83-9V	534313	6853814	28/08/2006 12:44	1791.3	1	26.1	17.2	53	0	21.2	9.9
HR-02229	HR02229	NAD83-9V	534272	6853908	28/08/2006 12:52	1766.3	0.4	32.1	19.3	69	0	24.9	12.2
HR-02230	HR02230	NAD83-9V	534242	6853999	28/08/2006 13:00	1731	0.6	31.4	18.3	66	0	30.3	15.3
HR-02231	HR02231	NAD83-9V	534187	6854107	28/08/2006 13:10	1702.6	0.7	20.2	20.6	72	0	25.5	11.3
HR-02232	HR02232	NAD83-9V	534149	6854202	28/08/2006 13:20	1680.4	0.6	26	31.6	82	0	34.9	17.6

SAMPLES	Mn	Fe	As	U	Au	Th	Sr	Cd	Sb	Bi	V	Ca	P	La	Cr	Mg	Ba	Ti	B	Al
HR-02166	724	4.39	55.4	1.9	3.8	7.3	59	0.1	0.7	0.4	33	0.7	0.09	21	38	1.44	75	0.073	1	2.47
HR-02167	236	2.16	23.9	1.5	4.8	3.4	55	0.1	0.5	0.2	13	1.02	0.062	11	14	0.47	45	0.017	1	1.14
HR-02168	749	3.16	13.1	2.1	2.2	8.3	21	0.1	0.5	0.6	10	0.42	0.072	12	17	0.53	37	0.004	0	1.52
HR-02169	1064	3.66	17.1	0.9	1.3	9.2	6	0.1	0.5	1.3	16	0.05	0.074	11	26	0.69	22	0.003	0	1.81
HR-02170	1501	4.3	14.5	1.5	2	17.5	14	0.1	0.7	0.7	17	0.11	0.048	21	34	1.03	46	0.001	0	2.24
HR-02171	782	4.54	25.4	6.5	4	15.8	23	0	1.1	0.7	15	0.14	0.038	19	31	0.98	31	0.001	0	2.39
HR-02172	613	3.53	58.3	1.1	9.9	5.3	16	0.1	4.7	0.5	8	0.19	0.063	12	13	0.25	29	0.002	0	0.97
HR-02173	758	4.06	14.2	1.3	3	16.5	31	0.1	1.2	0.5	10	0.45	0.067	15	22	0.73	19	0.001	0	1.58
HR-02174	803	4.25	5.9	1.4	0.8	14.8	20	0.1	0.5	0.5	10	0.27	0.059	15	24	0.72	24	0.002	0	1.73
HR-02175	786	4.16	5.9	1.7	1.8	13	19	0.1	0.4	0.5	8	0.22	0.057	10	22	0.63	25	0.002	0	1.5
HR-02176	1082	3.91	10.5	2.5	3.4	13.7	42	0.1	0.5	0.5	9	0.52	0.053	9	20	0.61	61	0.002	0	1.93
HR-02177	364	2.38	4.1	1.2	0.8	5	36	0.1	0.4	0.4	7	0.6	0.063	6	12	0.34	32	0.005	1	1.06
HR-02178	472	3.52	11.3	1.4	2.9	14.2	23	0	0.8	0.4	8	0.42	0.054	13	18	0.57	33	0.002	0	1.41
HR-02179	503	3.54	16.3	1.4	2.2	12.3	42	0.1	0.8	0.4	7	0.62	0.058	21	18	0.59	25	0.001	0	1.35
HR-02180	605	3.74	12.2	1.2	3.5	13.3	21	0	0.7	0.5	9	0.3	0.055	17	23	0.69	29	0.002	0	1.67
HR-02181	809	3.45	8.4	1.1	1.7	9.3	14	0.1	0.4	0.5	9	0.2	0.07	20	22	0.61	31	0.002	0	1.47
HR-02182	647	2.2	8.7	1.8	1.4	8.9	11	0.1	0.4	0.2	6	0.16	0.064	23	11	0.32	32	0.004	0	1.11
HR-02183	409	1.99	3.4	0.8	0	3.2	7	0.1	0.3	0.2	6	0.11	0.054	16	11	0.28	23	0.004	0	0.84
HR-02184	336	1.56	2.3	0.7	0	0.8	4	0	0.2	0.2	8	0.04	0.06	12	9	0.2	15	0.008	1	0.81
HR-02185	408	2.14	6.9	1.7	1.4	3.9	35	0	0.6	0.3	8	0.67	0.054	17	10	0.34	40	0.006	0	1.25
HR-02186	411	3.96	10.5	1.7	0	6.8	9	0.1	0.7	0.5	9	0.11	0.082	16	18	0.47	21	0.001	0	1.61
HR-02187	917	3.03	24.2	1	2.6	5.2	5	0.1	2	0.3	8	0.05	0.077	22	14	0.36	18	0.008	0	1.36
HR-02188	14	0.27	0	0.2	0	0.1	6	0	0	0	4	0.03	0.021	1	1	0.02	11	0.016	0	0.27
HR-02189	653	3.73	5.6	1.9	0.9	7.6	23	0	0.4	0.4	14	0.3	0.065	12	27	0.7	36	0.002	0	1.8
HR-02190	939	3.99	8.6	2.5	1.8	16.3	16	0	0.6	0.5	11	0.23	0.038	16	27	0.77	23	0.001	0	1.9
HR-02201	902	3.44	51.3	3.4	49.7	8	30	0.2	0.9	0.5	13	0.27	0.06	17	14	0.65	26	0.008	1	1.27
HR-02202	328	3.53	38.5	0.9	2.4	7.3	5	0.1	1.2	0.5	9	0.03	0.073	21	16	0.44	15	0.003	0	1.16
HR-02203	554	3.24	40.2	2	1.7	7.5	12	0.1	1.5	0.5	8	0.1	0.059	26	13	0.54	20	0.003	0	1.2
HR-02204	621	3.37	32.2	1.1	3.5	7.6	103	0.1	1.7	0.4	6	2.61	0.061	19	13	0.46	19	0.002	0	0.94
HR-02205	517	3.7	29.8	0.9	2.2	6.3	9	0.1	1	0.5	11	0.09	0.065	18	20	0.5	31	0.003	1	1.41
HR-02206	517	2.61	22.3	0.6	2.9	1.9	10	0.1	0.8	0.4	9	0.12	0.085	12	10	0.23	32	0.004	1	0.75
HR-02207	537	4.18	25.3	2.2	1.9	14.1	9	0.1	1.9	0.6	8	0.08	0.064	35	16	0.49	17	0.002	0	1.1
HR-02208	486	3.79	40.2	0.8	2.8	12.7	41	0.1	1.2	0.5	7	0.83	0.043	22	12	0.41	19	0.001	1	0.92
HR-02209	200	3.16	24.9	1.2	3.2	9.5	39	0.1	1.5	0.5	4	0.42	0.055	21	7	0.21	26	0.001	0	0.69
HR-02210	452	3.38	21.1	3.1	0.8	8.5	30	0.1	0.6	0.6	8	0.21	0.046	20	16	0.5	18	0.002	0	1.28
HR-02211	629	3.99	22.4	2.1	2.5	11.5	24	0.1	1	0.6	10	0.25	0.057	23	18	0.51	31	0.002	0	1.27
HR-02212	1499	5	23.5	1.6	2.9	11.5	19	0.2	1	0.8	12	0.27	0.087	30	20	0.69	44	0.002	0	1.65
HR-02213	1136	4.25	14	1.1	2.6	10.8	15	0.2	0.8	0.6	12	0.3	0.072	25	24	0.72	44	0.002	0	1.63
HR-02214	485	4.23	9.7	1.1	0.9	8.9	6	0	0.9	0.6	13	0.09	0.036	34	19	0.51	26	0.002	0	1.59
HR-02215	405	4.27	9	1.1	1.5	7.8	5	0.1	0.9	0.5	17	0.03	0.057	28	24	0.61	31	0.005	0	1.97
HR-02216	375	3.6	6.7	1	1.4	6.6	7	0	0.5	0.5	12	0.05	0.053	29	16	0.35	31	0.004	0	1.19
HR-02217	646	3.56	1.7	0.6	0	2.9	3	0.1	0.2	0.4	20	0.03	0.091	18	27	0.57	27	0.008	0	1.51
HR-02218	4756	4.14	1.1	0.7	1.3	6.4	7	0.3	0.2	0.8	22	0.05	0.072	12	36	0.88	48	0.005	1	2.17
HR-02219	597	3.73	5	1.4	2.1	6.6	6	0.1	0.5	0.5	23	0.06	0.065	36	30	0.73	31	0.01	0	1.76
HR-02220	819	3.44	17.7	1.1	2.6	6.6	24	0.2	1.5	0.4	9	0.56	0.078	18	14	0.35	35	0.002	1	1.1
HR-02221	1129	4.69	7.2	1.7	0.8	12.1	6	0.1	0.6	0.6	13	0.05	0.054	20	25	0.68	24	0.002	0	1.81
HR-02222	536	3.6	9	1.4	1.1	5.8	6	0.1	1.4	0.5	14	0.04	0.064	20	20	0.47	32	0.004	0	1.48
HR-02223	548	3.52	9.9	1.4	2	7.4	8	0.1	1.4	0.4	12	0.02	0.053	22	19	0.47	23	0.004	1	1.38
HR-02224	382	2.28	3.7	0.7	0.6	2.4	4	0.1	0.4	0.3	13	0.03	0.074	10	15	0.3	20	0.008	0	1.01
HR-02225	675	4.14	6.8	1	0.9	16.2	24	0.1	1.2	0.6	11	0.47	0.044	24	26	0.74	21	0.001	2	2.12
HR-02226	416	3.09	11.5	1.1	3.3	5.6	8	0.1	1.2	0.4	20	0.08	0.067	26	23	0.5	52	0.011	0	1.45
HR-02227	900	2.12	9.9	0.7	3.8	13.7	8	0.1	2.5	0.3	6	0.21	0.031	18	8	0.22	42	0.001	0	0.81
HR-02228	327	3.1	19.8	1.1	1.6	4.9	4	0.1	1.3	0.4	16	0.03	0.074	19	16	0.25	18	0.005	0	0.9
HR-02229	481	3.31	9.3	1.2	0	5.7	6	0.1	0.7	0.4	13	0.09	0.074	16	18	0.45	46	0.004	0	1.36
HR-02230	491	3.35	5.9	1.3	1	8.3	9	0.1	0.6	0.4	13	0.1	0.065	23	23	0.59	28	0.007	1	1.5
HR-02231	366	4.27	9.3	0.9	0	10.4	3	0.1	0.6	0.5	18	0.01	0.038	29	23	0.57	26	0.004	0	1.69
HR-02232	547	3.89	9.7	0.9	0	11.4	5	0.1	0.7	0.6	12	0.04	0.053	28	26	0.69	42	0.002	0	1.96

SAMPLES	Na	K	W	Hg	Sc	Tl	S	Ga	Se	Analysis:	Acme file #
HR-02166	0.01	0.08	0.2	0.02	3	0.1	0	7	0	GROUP 1DX - 15.0 GM	A607419
HR-02167	0.019	0.03	0.1	0.02	1.3	0	0.09	3	0	GROUP 1DX - 15.0 GM	A607419
HR-02168	0.011	0.03	0	0.02	1.9	0	0.07	4	0.5	GROUP 1DX - 15.0 GM	A607419
HR-02169	0.008	0.03	0	0.02	1.1	0	0	6	0	GROUP 1DX - 15.0 GM	A607419
HR-02170	0.003	0.03	0	0.01	1.7	0	0	6	0	GROUP 1DX - 15.0 GM	A607419
HR-02171	0.003	0.03	0	0.01	1.8	0	0	7	0	GROUP 1DX - 15.0 GM	A607419
HR-02172	0.009	0.03	0	0.01	1.5	0	0	3	0	GROUP 1DX - 15.0 GM	A607419
HR-02173	0.003	0.03	0	0.02	2.7	0	0	4	0	GROUP 1DX - 15.0 GM	A607419
HR-02174	0.003	0.03	0	0.03	2.9	0	0	5	0	GROUP 1DX - 15.0 GM	A607419
HR-02175	0.003	0.03	0	0.04	3.2	0	0	4	0	GROUP 1DX - 15.0 GM	A607419
HR-02176	0.007	0.05	0	0.03	3.2	0.1	0.07	5	0	GROUP 1DX - 15.0 GM	A607419
HR-02177	0.012	0.02	0	0.03	1.7	0	0.08	3	0	GROUP 1DX - 15.0 GM	A607419
HR-02178	0.006	0.03	0	0.02	2.3	0	0	4	0	GROUP 1DX - 15.0 GM	A607419
HR-02179	0.004	0.02	0	0.02	3.3	0	0.06	4	0	GROUP 1DX - 15.0 GM	A607419
HR-02180	0.004	0.03	0	0.03	2.1	0	0	5	0	GROUP 1DX - 15.0 GM	A607419
HR-02181	0.005	0.04	0	0.01	1.3	0	0.07	5	0	GROUP 1DX - 15.0 GM	A607419
HR-02182	0.007	0.04	0.1	0.01	1.3	0	0	3	0	GROUP 1DX - 15.0 GM	A607419
HR-02183	0.01	0.03	0	0.02	0.7	0	0	3	0	GROUP 1DX - 15.0 GM	A607419
HR-02184	0.013	0.03	0.1	0.02	0.3	0	0	3	0	GROUP 1DX - 15.0 GM	A607419
HR-02185	0.016	0.02	0	0.01	1	0	0.07	3	0	GROUP 1DX - 15.0 GM	A607419
HR-02186	0.003	0.03	0	0.02	0.8	0.1	0	5	0	GROUP 1DX - 15.0 GM	A607419
HR-02187	0.01	0.03	0	0.02	1.1	0.1	0	4	0	GROUP 1DX - 15.0 GM	A607419
HR-02188	0.023	0.02	0.1	0.02	0.1	0	0	2	0	GROUP 1DX - 15.0 GM	A607419
HR-02189	0.005	0.04	0	0.03	1.9	0.1	0.06	5	0	GROUP 1DX - 15.0 GM	A607419
HR-02190	0.003	0.04	0	0.03	2.8	0	0	5	0	GROUP 1DX - 15.0 GM	A607419
HR-02201	0.004	0.07	0.1	0.01	1.2	0.1	0	4	0.6	GROUP 1DX - 15.0 GM	A607419
HR-02202	0.002	0.03	0	0.01	1	0	0	3	0	GROUP 1DX - 15.0 GM	A607419
HR-02203	0.003	0.03	0	0.01	1.5	0	0	3	0.5	GROUP 1DX - 15.0 GM	A607419
HR-02204	0.003	0.03	0.1	0.01	2.3	0	0.08	3	0	GROUP 1DX - 15.0 GM	A607419
HR-02205	0.004	0.04	0	0.01	1.6	0	0	4	0.5	GROUP 1DX - 15.0 GM	A607419
HR-02206	0.006	0.04	0	0.03	0.6	0	0.07	3	0	GROUP 1DX - 15.0 GM	A607419
HR-02207	0.002	0.04	0	0.02	1.4	0.1	0	3	0	GROUP 1DX - 15.0 GM	A607419
HR-02208	0.002	0.06	0	0.01	1.6	0.1	0	3	0	GROUP 1DX - 15.0 GM	A607419
HR-02209	0.003	0.05	0	0.02	1.5	0.1	0	2	0	GROUP 1DX - 15.0 GM	A607419
HR-02210	0.003	0.03	0	0	1.9	0	0	3	0	GROUP 1DX - 15.0 GM	A607419
HR-02211	0.004	0.04	0	0.01	2.1	0	0	4	0.5	GROUP 1DX - 15.0 GM	A607419
HR-02212	0.003	0.08	0.1	0.02	2.8	0	0	4	0	GROUP 1DX - 15.0 GM	A607419
HR-02213	0.002	0.06	0	0.02	2.4	0	0	4	0	GROUP 1DX - 15.0 GM	A607419
HR-02214	0.003	0.03	0	0.02	1.2	0	0	5	0	GROUP 1DX - 15.0 GM	A607419
HR-02215	0.002	0.03	0.1	0.01	1.3	0.1	0	6	0	GROUP 1DX - 15.0 GM	A607419
HR-02216	0.003	0.03	0.1	0.01	1.4	0	0	3	0	GROUP 1DX - 15.0 GM	A607419
HR-02217	0.003	0.03	0	0.03	0.8	0	0	5	0	GROUP 1DX - 15.0 GM	A607419
HR-02218	0.004	0.04	0	0.1	1.5	0	0.08	7	0	GROUP 1DX - 15.0 GM	A607419
HR-02219	0.003	0.04	0.1	0.01	1.2	0	0	6	0	GROUP 1DX - 15.0 GM	A607419
HR-02220	0.003	0.03	0	0.03	2.4	0	0	3	0	GROUP 1DX - 15.0 GM	A607419
HR-02221	0.003	0.03	0.1	0.04	2.2	0	0	5	0	GROUP 1DX - 15.0 GM	A607419
HR-02222	0.002	0.03	0	0.01	1.4	0	0	4	0	GROUP 1DX - 15.0 GM	A607419
HR-02223	0.003	0.03	0.1	0.01	1.2	0	0	4	0	GROUP 1DX - 15.0 GM	A607419
HR-02224	0.009	0.03	0.1	0.04	0.9	0	0	4	0	GROUP 1DX - 15.0 GM	A607419
HR-02225	0.003	0.04	0	0.02	2.2	0	0	6	0	GROUP 1DX - 15.0 GM	A607419
HR-02226	0.005	0.05	0.1	0.02	1.6	0.1	0	5	0	GROUP 1DX - 15.0 GM	A607419
HR-02227	0.003	0.03	0	0.02	1.9	0.1	0	1	0	GROUP 1DX - 15.0 GM	A607419
HR-02228	0.003	0.03	0.1	0.02	0.9	0.1	0	4	0	GROUP 1DX - 15.0 GM	A607419
HR-02229	0.005	0.04	0.1	0.01	1.3	0	0	4	0	GROUP 1DX - 15.0 GM	A607419
HR-02230	0.005	0.04	0.1	0.01	1.2	0	0	5	0	GROUP 1DX - 15.0 GM	A607419
HR-02231	0.002	0.04	0.1	0.02	1.2	0	0	6	0	GROUP 1DX - 15.0 GM	A607419
HR-02232	0.003	0.05	0	0.01	1.4	0	0	5	0	GROUP 1DX - 15.0 GM	A607419



SAMPLES	GPS ID	Datum	Easting	Northing	Date Time	Elevation	Mo	Cu	Pb	Zn	Ag	Ni	Co
HR-02233	HR02233	NAD83-9V	534108	6854291	28/08/2006 13:28	1654.1	0.3	32.9	30.5	90	0	34.3	17.4
HR-02234	HR02234	NAD83-9V	534106	6854406	28/08/2006 13:34	1631.6	0.7	41.8	47.7	123	0.1	41.2	21.1
HR-02235	HR02235	NAD83-9V	534123	6854514	28/08/2006 13:42	1616	0.6	35.1	31	93	0	35.2	18.7
HR-02236	HR02236	NAD83-9V	534151	6854620	28/08/2006 13:46	1601.1	0.8	18.7	20	67	0	27.6	13.2
HR-02237	HR02237	NAD83-9V	534177	6854717	28/08/2006 13:53	13786.7	0.4	26.7	21.1	76	0	33.9	14.3
HR-02238	HR02238	NAD83-9V	534218	6854820	28/08/2006 14:00	1586.5	0.4	23.8	23.7	81	0	30.9	13.5
HR-02239	HR02239	NAD83-9V	534187	6854923	28/08/2006 14:11	1574.6	0.5	21	20.9	68	0	27.7	12.1
HR-02240	HR02240	NAD83-9V	534132	6855024	28/08/2006 14:16	1551.1	0.6	12	33.6	56	0	16.3	9.8
HR-02241	HR02241	NAD83-9V	534120	6855121	28/08/2006 14:28	1537.4	0.5	12.7	24.8	36	0.1	14.1	9.8
HR-02242	HR02242	NAD83-9V	534174	6855215	28/08/2006 14:45	1531.6	0.4	21.2	26.5	79	0	36	16.8
HR-02243	HR02243	NAD83-9V	534199	6855322	28/08/2006 14:49	1525.2	0.3	4.2	8.6	22	0	6.5	2.9
HR-02244	HR02244	NAD83-9V	534182	6855402	28/08/2006 15:36	-9999	0.7	31.4	26.5	92	0	34.9	23.4
HR-02245	HR02245	NAD83-9V	534160	6855518	28/08/2006 15:46	1524.9	0.7	20.1	18.5	59	0	19.9	10.5
HR-02246	HR02246	NAD83-9V	534128	6855613	28/08/2006 15:47	1520.6	1.1	10.5	12.7	23	0	15.6	8.7
HR-02247	HR02247	NAD83-9V	534112	6855707	28/08/2006 15:53	1509.1	0.3	12.9	19.9	34	0	17.1	9.7
HR-02301	HR02301	NAD83-9V	517324	6851818	27/08/2006 14:12	1943.1	1.6	140.1	31.9	168	0.2	105.5	61.1
HR-02302	HR02302	NAD83-9V	517671	6852008	27/08/2006 14:40	1849.8	0.4	59.7	11.7	84	0	43.1	23.5
HR-02303	HR02303	NAD83-9V	517636	6852383	27/08/2006 15:00	1818.1	0.9	74.1	18.9	135	0	65.8	37.1
HR-02304	HR02304	NAD83-9V	517621	6852550	27/08/2006 15:07	1793.4	0.4	93.5	10.9	77	0	42.7	22.8
HR-02305	HR02305	NAD83-9V	517895	6852785	27/08/2006 15:21	1766	0.9	41.7	18.8	132	0	29.5	14.7
HR-02306	HR02306	NAD83-9V	517993	6852750	27/08/2006 15:32	1730.7	1.1	74.4	23.3	203	0	58.4	27.5
HR-02307	HR02307	NAD83-9V	518059	6852827	27/08/2006 15:41	1714.2	0.9	68.5	17.5	144	0	38.3	24.1
HR-02308	HR02308	NAD83-9V	518156	6852888	27/08/2006 15:52	1693.8	0.8	118.4	16.1	126	0	60.4	32.8
HR-02309	HR02309	NAD83-9V	518232	6852974	27/08/2006 16:02	1683.7	0.5	75.2	14.5	124	0	51.6	23.5
HR-02310	HR02310	NAD83-9V	518321	6853056	27/08/2006 16:14	1682.5	1.1	39.7	16.3	120	0	35.7	21.8
HR-02311	HR02311	NAD83-9V	518412	6853103	27/08/2006 16:23	1688.6	1.2	50	16	155	0	49.1	28.1
HR-02312	HR02312	NAD83-9V	518492	6853177	27/08/2006 16:35	1672.7	1.2	29	17.2	110	0	26.1	13.2
HR-02313	HR02313	NAD83-9V	518570	6853236	27/08/2006 16:44	1673.7	1.2	35.8	16.9	145	0	31.8	28.9
HR-02314	HR02314	NAD83-9V	518664	6853268	27/08/2006 16:57	1636.2	0.7	18.5	11.6	83	0	13	12.3
HR-02315	HR02315	NAD83-9V	518761	6853299	27/08/2006 17:09	1630.4	1.2	38.8	18	177	0	30.6	14.6
HR-02316	HR02316	NAD83-9V	518842	6853352	27/08/2006 17:23	1605.7	1	36.5	10.4	124	0	30.6	20.8
HR-02317	HR02317	NAD83-9V	518936	6853389	27/08/2006 17:36	1596.8	1	43.4	18	148	0	33.4	25.9
HR-02318	HR02318	NAD83-9V	519051	6853491	27/08/2006 17:47	1586.2	0.7	49.3	22	144	0	41.5	19.1
HR-02319	HR02319	NAD83-9V	519119	6853379	27/08/2006 17:56	1591.1	0.4	40.9	8.7	68	0	28.5	16.6
HR-02320	HR02320	NAD83-9V	529210	6858813	28/08/2006 13:13	1942.8	0.5	41.4	27.1	101	0	44.4	23.6
HR-02321	HR02321	NAD83-9V	529300	6858865	28/08/2006 13:22	1958.6	0.4	24.4	26.4	62	0.1	22.6	13.2
HR-02322	HR02322	NAD83-9V	529402	6858916	28/08/2006 13:31	1973	0.8	40.7	27.1	37	0.2	32.5	22
HR-02323	HR02323	NAD83-9V	529460	6859007	28/08/2006 13:39	1964.7	0.9	35.5	27.2	89	0	35.8	18.9
HR-02324	HR02324	NAD83-9V	529561	6858981	28/08/2006 13:50	1954.1	0.4	72.9	30.7	25	0	26.2	19.8
HR-02325	HR02325	NAD83-9V	529658	6858995	28/08/2006 14:00	1938.8	0.8	108	25.5	58	0.1	37.1	24
HR-02326	HR02326	NAD83-9V	529766	6858995	28/08/2006 14:10	1931.8	0.4	35.6	22	57	0	18.9	8.3
HR-02327	HR02327	NAD83-9V	529852	6859052	28/08/2006 14:18	1922.7	0.5	28.8	15.2	56	0	21.4	10.6
HR-02328	HR02328	NAD83-9V	529912	6859135	28/08/2006 14:29	1929.4	0.6	19.4	20.2	44	0	17.1	9.1
HR-02329	HR02329	NAD83-9V	529984	6859169	28/08/2006 14:36	1931.8	0.5	16.6	14	46	0	18.1	7.8
HR-02330	HR02330	NAD83-9V	530086	6859118	28/08/2006 14:45	1923.6	0.8	20.9	18	60	0	20.4	10
HR-02336	HR02336	NAD83-9V	508870	6861788	27/08/2006 13:04	1663	1.7	10	7.6	35	0	10.1	6.8
HR-02337	HR02337	NAD83-9V	508965	6861828	27/08/2006 13:14	1667	1.8	13	8.4	36	0	9.1	5.2
HR-02338	HR02338	NAD83-9V	509049	6861867	27/08/2006 13:22	1670.9	3.7	101.8	14.8	88	0	27.1	18.7
HR-02339	HR02339	NAD83-9V	509146	6861901	27/08/2006 13:32	1660.6	1.4	81.6	12.8	44	0	13.5	5.5
HR-02340	HR02340	NAD83-9V	509192	6861995	27/08/2006 13:39	1652	2.3	37.3	13.4	64	0	31.9	17
HR-02341	HR02341	NAD83-9V	509398	6862043	27/08/2006 13:59	1589.5	1.2	72.1	19.4	92	0	55.9	47.9
HR-02342	HR02342	NAD83-9V	509511	6862112	27/08/2006 14:12	1552	2.1	91.7	20.7	122	0	50.8	45.5
HR-02343	HR02343	NAD83-9V	509603	6862161	27/08/2006 14:22	1531.3	0.5	36	18.1	85	0	29.5	15.7
HR-02344	HR02344	NAD83-9V	509787	6862279	27/08/2006 14:44	1518.8	1	56.3	18.2	114	0	46.3	19.8
HR-02345	HR02345	NAD83-9V	509879	6862315	27/08/2006 14:52	1502.1	1.3	20.4	10.5	67	0	21.1	15.4
HR-02346	HR02346	NAD83-9V	509961	6862379	27/08/2006 15:03	1489.6	0.3	8.6	11.8	81	0	16.2	8.8
HR-02347	HR02347	NAD83-9V	510002	6862471	27/08/2006 15:16	1474	0.4	7.9	5.8	52	0	8.2	4.6

SAMPLES	Mn	Fe	As	U	Au	Th	Sr	Cd	Sb	Bi	V	Ca	P	La	Cr	Mg	Ba	Ti	B	Al
HR-02233	458	3.98	10.8	0.8	1.3	12.2	4	0.1	0.9	0.5	11	0.04	0.04	23	25	0.69	37	0.001	0	1.97
HR-02234	962	4.54	15.6	1.5	2.2	9.8	11	0.1	3.2	0.5	10	0.22	0.073	23	17	0.5	45	0.003	0	1.33
HR-02235	416	3.98	28.4	1.1	4.2	7.1	6	0.1	2.3	0.5	14	0.06	0.049	21	19	0.46	33	0.003	0	1.4
HR-02236	293	3.82	9.8	0.8	0	10	3	0.1	0.7	0.4	17	0.02	0.043	26	26	0.48	28	0.005	0	1.77
HR-02237	341	4.01	9.9	1.1	0	9.1	4	0	0.8	0.5	13	0.03	0.037	26	24	0.65	45	0.002	0	1.87
HR-02238	319	4.13	9.8	0.8	0	10.4	3	0.1	0.8	0.5	13	0.01	0.034	24	26	0.64	31	0.002	1	1.97
HR-02239	299	3.72	9.2	0.7	0	8.4	3	0	0.7	0.4	14	0.01	0.043	23	24	0.57	37	0.002	1	1.83
HR-02240	652	3.66	8.3	0.9	0	3.5	4	0	1.2	0.5	16	0.02	0.051	22	15	0.22	23	0.005	0	0.85
HR-02241	439	3.09	7.9	0.7	0	1.9	3	0	1	0.4	11	0.01	0.05	15	12	0.19	17	0.007	0	0.83
HR-02242	328	4.17	11.6	0.8	0	11.7	3	0.1	0.7	0.5	14	0.02	0.028	25	27	0.63	40	0.002	0	2.29
HR-02243	76	1.27	3	0.3	0	2.5	3	0	0.5	0.2	15	0.01	0.019	17	9	0.15	24	0.006	0	0.8
HR-02244	770	4.93	6.2	0.8	0	6.1	10	0.1	0.4	0.5	20	0.13	0.088	17	27	0.65	31	0.005	0	2.03
HR-02245	351	4.4	7	0.6	1.3	6.2	5	0	0.6	0.5	29	0.04	0.059	27	21	0.36	28	0.006	0	1.49
HR-02246	182	2.8	11.3	0.5	0	9.2	3	0	1.2	0.4	20	0.01	0.021	34	15	0.09	40	0.003	0	0.88
HR-02247	287	2.78	8	0.5	0	10.6	3	0.1	0.6	0.3	7	0.01	0.016	25	14	0.21	54	0.001	0	1.23
HR-02301	1239	9.9	4.7	1.9	2.9	17.6	381	0.3	0.2	1.1	77	4.2	0.087	59	67	1.76	107	0.217	0	3.38
HR-02302	409	3.7	2.7	1	1.2	10.1	255	0.1	0.1	0.5	31	4.45	0.053	30	27	0.96	50	0.101	0	1.71
HR-02303	1346	5.93	3.2	1.2	1.6	11.5	307	0.2	0.2	0.5	64	2.98	0.074	42	57	1.53	75	0.155	0	3.18
HR-02304	474	3.79	3.5	0.6	1.7	5.7	16	0.1	0.1	0.3	56	0.07	0.047	13	45	0.9	51	0.109	0	2.71
HR-02305	425	3.44	19.6	1.5	0.8	4.5	60	0.1	0.1	0.5	44	0.16	0.063	33	31	0.75	53	0.107	0	2.27
HR-02306	792	4.2	22.4	2.2	0	11.8	91	0.2	0.1	0.6	36	0.19	0.055	45	26	0.84	69	0.126	0	2.21
HR-02307	515	3.26	3.8	2.2	1.3	8.7	41	0.1	0.1	0.5	33	0.11	0.058	39	24	0.66	55	0.103	0	1.85
HR-02308	560	4.67	3.3	1.3	1.3	7.7	229	0.2	0.1	0.4	89	0.32	0.051	22	66	1.35	91	0.134	0	3.09
HR-02309	524	4.64	2.1	1.5	1.2	7	134	0.1	0.1	0.5	78	0.32	0.048	30	64	1.27	82	0.15	0	3.1
HR-02310	896	4.48	1.2	1.1	2.6	7.4	105	0.2	0.1	0.5	57	0.21	0.08	40	53	0.92	64	0.149	0	2.33
HR-02311	1117	5.59	8.9	1.2	1.9	8.4	190	0.2	0.1	0.4	68	0.71	0.13	49	66	1.11	81	0.202	0	2.41
HR-02312	475	4.02	1.4	1.2	1.2	4.2	151	0.1	0.1	0.5	48	0.26	0.075	46	40	0.81	73	0.128	0	2.38
HR-02313	1351	5.07	1.1	1.2	1.2	4.8	95	0.2	0.1	0.7	53	0.53	0.101	52	43	0.79	67	0.117	0	2.49
HR-02314	980	2.54	0.7	0.8	1.2	1	37	0.2	0.1	0.3	33	0.21	0.071	19	21	0.33	54	0.066	1	1.45
HR-02315	417	4.24	1	1.6	1.1	5.7	76	0.1	0.1	0.5	50	0.47	0.094	53	39	0.92	68	0.153	0	2.12
HR-02316	801	4.02	1.1	1.5	0.7	4.7	43	0.2	0	0.4	51	0.27	0.103	39	41	0.77	47	0.13	0	2.07
HR-02317	827	4	1.4	1.3	1	4	75	0.2	0.1	0.4	47	0.27	0.065	36	36	0.81	68	0.12	0	2.03
HR-02318	495	4.2	2.5	1.9	1.6	10.3	117	0.2	0.2	0.6	46	0.53	0.073	51	40	1.05	64	0.142	1	2.35
HR-02319	521	3.18	1.6	0.7	1.4	6.8	289	0.1	0.1	0.3	28	5.5	0.044	20	23	0.73	38	0.08	1	1.42
HR-02320	679	4.34	8.9	1	1.3	13.1	8	0	0.9	0.5	18	0.09	0.055	44	32	0.79	27	0.003	0	1.99
HR-02321	540	2.76	10.9	1.3	2.9	4.4	34	0.2	1.3	0.3	6	0.79	0.076	9	8	0.18	34	0.002	1	0.72
HR-02322	1479	3.97	12.8	1.2	2.4	15.4	15	0.2	1	0.4	6	0.3	0.054	14	11	0.24	33	0.003	1	0.84
HR-02323	599	3.95	15.7	1.4	12.2	6.4	6	0.1	1.4	0.4	15	0.05	0.06	31	21	0.39	26	0.009	1	1.2
HR-02324	955	3.16	26.3	1.3	3.4	13	10	0	1.3	0.4	5	0.15	0.057	29	4	0.08	28	0.002	0	0.5
HR-02325	1057	3.82	22	1.9	2.4	14.8	13	0.1	1.3	0.4	11	0.18	0.055	20	14	0.28	35	0.009	1	0.99
HR-02326	455	2.54	9.8	0.9	1	3.4	8	0.1	0.6	0.3	11	0.08	0.063	24	10	0.23	34	0.006	0	1.02
HR-02327	545	2.67	8.5	1.2	0.9	8.3	15	0.1	0.7	0.3	16	0.16	0.087	33	14	0.29	46	0.017	0	0.99
HR-02328	319	2.33	10.7	0.7	5.1	1.4	8	0.2	0.5	0.3	17	0.07	0.066	19	14	0.25	26	0.009	1	1
HR-02329	430	2.06	8.1	0.9	0.8	9.3	13	0.1	0.4	0.2	13	0.13	0.071	32	12	0.28	38	0.012	1	1.01
HR-02330	535	2.5	9.2	1	2.5	6.8	13	0.1	0.5	0.3	21	0.11	0.098	32	16	0.32	33	0.023	1	1.11
HR-02336	360	2.13	3.7	4.1	0	1	18	0.1	0.1	0.5	41	0.14	0.039	8	18	0.52	72	0.072	0	1.82
HR-02337	287	1.72	2.1	2.1	0	0.8	13	0.1	0.2	0.3	29	0.09	0.066	6	18	0.37	44	0.057	0	1.8
HR-02338	1033	5	4.7	3.8	5.8	11.9	27	0.1	0.2	6.5	40	0.23	0.081	17	33	0.78	63	0.102	1	3.36
HR-02339	196	4.96	8	2.2	18.3	2.3	10	0.1	0.3	25	41	0.06	0.084	12	35	0.35	38	0.067	0	2.72
HR-02340	323	3.14	11.1	4.5	1.7	3.7	25	0.1	0.3	1	45	0.2	0.061	16	35	0.69	59	0.052	0	3.28
HR-02341	1039	4.99	6	2.2	3	10.7	53	0.1	0.1	1.1	34	0.18	0.059	26	37	0.73	71	0.029	0	2.29
HR-02342	1154	4.56	11.6	3.3	3.5	6.3	31	0.1	0.2	1.1	33	0.13	0.07	18	30	0.65	81	0.077	0	2.48
HR-02343	1010	3.16	5.3	1.8	2.4	4.2	71	0.3	0.1	1.6	35	0.42	0.072	19	34	0.64	62	0.058	1	3.76
HR-02344	487	3.95	11.5	1.5	2.1	2.9	23	0.2	0.2	0.9	33	0.1	0.059	15	29	0.64	83	0.05	0	2.42
HR-02345	694	2.91	6.5	1	0.9	0.8	18	0.3	0.1	0.5	29	0.11	0.065	14	24	0.44	92	0.034	0	1.4
HR-02346	447	2.32	0.7	0.9	0	3.7	71	0.5	0	0.2	39	1.26	0.145	16	44	1.5	123	0.117	0	2.63
HR-02347	189	1.32	1	0.6	0	0.9	64	0.2	0.1	0.1	23	0.59	0.08	9	22	0.92	131	0.054	0	1.84

SAMPLES	Na	K	W	Hg	Sc	Tl	S	Ga	Se	Analysis:	Acme file #
HR-02233	0.003	0.05	0	0.01	1.4	0	0	5	0	GROUP 1DX - 15.0 GM	A607419
HR-02234	0.004	0.03	0.1	0.03	4.5	0	0	4	0	GROUP 1DX - 15.0 GM	A607419
HR-02235	0.002	0.03	0.1	0.01	1.7	0	0	4	0	GROUP 1DX - 15.0 GM	A607419
HR-02236	0.002	0.03	0.1	0.02	1.3	0.1	0	5	0	GROUP 1DX - 15.0 GM	A607419
HR-02237	0.003	0.05	0	0.01	1.5	0.1	0	5	0	GROUP 1DX - 15.0 GM	A607419
HR-02238	0.002	0.04	0.1	0.01	1.4	0.1	0	5	0	GROUP 1DX - 15.0 GM	A607419
HR-02239	0.003	0.04	0	0.02	1.2	0	0	5	0	GROUP 1DX - 15.0 GM	A607419
HR-02240	0.002	0.03	0.1	0.01	1	0	0	5	0	GROUP 1DX - 15.0 GM	A607419
HR-02241	0.009	0.02	0.1	0.01	0.8	0	0.06	4	0	GROUP 1DX - 15.0 GM	A607419
HR-02242	0.002	0.05	0.1	0.02	1.6	0	0	5	0	GROUP 1DX - 15.0 GM	A607419
HR-02243	0.004	0.02	0.1	0.01	0.6	0	0	4	0	GROUP 1DX - 15.0 GM	A607419
HR-02244	0.005	0.03	0.1	0.02	2.1	0	0	7	0	GROUP 1DX - 15.0 GM	A607419
HR-02245	0.003	0.03	0.1	0.02	1.2	0.1	0	9	0	GROUP 1DX - 15.0 GM	A607419
HR-02246	0.003	0.03	0.1	0	0.8	0.1	0	5	0	GROUP 1DX - 15.0 GM	A607419
HR-02247	0.004	0.06	0	0.01	1.1	0	0	4	0	GROUP 1DX - 15.0 GM	A607419
HR-02301	0.097	1.2	0.2	0.01	8.6	0.6	1.01	11	1.4	GROUP 1DX - 15.0 GM	A607419
HR-02302	0.025	0.62	0.1	0	3.5	0.3	0.45	5	0	GROUP 1DX - 15.0 GM	A607419
HR-02303	0.078	0.48	0.2	0.01	7.4	0.4	0.11	10	0.5	GROUP 1DX - 15.0 GM	A607419
HR-02304	0.009	0.47	0.1	0.04	3.9	0.3	0	7	0	GROUP 1DX - 15.0 GM	A607419
HR-02305	0.011	0.31	0.2	0.01	2.9	0.3	0	8	0	GROUP 1DX - 15.0 GM	A607419
HR-02306	0.01	0.54	0.2	0.01	3.2	0.4	0	7	0	GROUP 1DX - 15.0 GM	A607419
HR-02307	0.011	0.39	0.2	0.01	2.6	0.3	0	6	0.5	GROUP 1DX - 15.0 GM	A607419
HR-02308	0.015	0.69	0.1	0	6.5	0.6	0	9	0	GROUP 1DX - 15.0 GM	A607419
HR-02309	0.017	0.65	0.1	0.01	6.3	0.5	0	11	0	GROUP 1DX - 15.0 GM	A607419
HR-02310	0.014	0.45	0.2	0.01	4.6	0.4	0	9	0	GROUP 1DX - 15.0 GM	A607419
HR-02311	0.026	0.67	0.2	0.01	6.5	0.5	0	11	0	GROUP 1DX - 15.0 GM	A607419
HR-02312	0.015	0.38	0.1	0.01	3.2	0.4	0.07	10	0	GROUP 1DX - 15.0 GM	A607419
HR-02313	0.015	0.53	1	0.01	3.4	0.4	0.08	11	0	GROUP 1DX - 15.0 GM	A607419
HR-02314	0.014	0.17	0.1	0.02	1.2	0.2	0.06	7	0	GROUP 1DX - 15.0 GM	A607419
HR-02315	0.014	0.59	0.4	0.01	3.8	0.5	0.09	10	0	GROUP 1DX - 15.0 GM	A607419
HR-02316	0.017	0.36	0.2	0.01	3.6	0.4	0	8	0	GROUP 1DX - 15.0 GM	A607419
HR-02317	0.01	0.67	0.2	0.01	3	0.5	0.07	9	0	GROUP 1DX - 15.0 GM	A607419
HR-02318	0.029	0.66	0.2	0.01	4.3	0.5	0	8	0	GROUP 1DX - 15.0 GM	A607419
HR-02319	0.04	0.4	0.1	0	3.1	0.3	0.18	5	0	GROUP 1DX - 15.0 GM	A607419
HR-02320	0.003	0.03	0	0.01	2.4	0	0	5	0	GROUP 1DX - 15.0 GM	A607419
HR-02321	0.004	0.04	0.1	0.04	1.9	0	0.11	1	0	GROUP 1DX - 15.0 GM	A607419
HR-02322	0.004	0.05	0.1	0.01	2.7	0.1	0	2	0	GROUP 1DX - 15.0 GM	A607419
HR-02323	0.002	0.04	0.1	0.01	1.4	0.1	0	3	0	GROUP 1DX - 15.0 GM	A607419
HR-02324	0.006	0.04	0	0.01	2	0.1	0	1	0	GROUP 1DX - 15.0 GM	A607419
HR-02325	0.004	0.05	0.1	0.02	2.5	0	0	3	0	GROUP 1DX - 15.0 GM	A607419
HR-02326	0.004	0.04	0.1	0	0.9	0.1	0	3	0	GROUP 1DX - 15.0 GM	A607419
HR-02327	0.003	0.04	0.1	0	1.7	0	0	3	0	GROUP 1DX - 15.0 GM	A607419
HR-02328	0.003	0.03	0.1	0.01	0.6	0.1	0	3	0	GROUP 1DX - 15.0 GM	A607419
HR-02329	0.003	0.04	0.1	0.01	1.5	0	0	2	0	GROUP 1DX - 15.0 GM	A607419
HR-02330	0.005	0.05	0.1	0.01	1.5	0.1	0	3	0.6	GROUP 1DX - 15.0 GM	A607419
HR-02336	0.017	0.13	0.5	0.02	1.8	0.2	0	8	0.5	GROUP 1DX - 15.0 GM	A607419
HR-02337	0.014	0.15	0.2	0.03	1.2	0.1	0	7	0.6	GROUP 1DX - 15.0 GM	A607419
HR-02338	0.015	0.32	2.9	0.01	4.4	0.3	0	9	1.2	GROUP 1DX - 15.0 GM	A607419
HR-02339	0.004	0.13	7.5	0.06	2.1	0.2	0.08	10	1.1	GROUP 1DX - 15.0 GM	A607419
HR-02340	0.009	0.18	1	0.03	2.5	0.3	0	9	0.9	GROUP 1DX - 15.0 GM	A607419
HR-02341	0.007	0.29	0.2	0.01	3.4	0.3	0	8	0	GROUP 1DX - 15.0 GM	A607419
HR-02342	0.011	0.39	0.6	0.04	3.4	0.5	0	8	0.5	GROUP 1DX - 15.0 GM	A607419
HR-02343	0.032	0.16	1.4	0.04	2.6	0.3	0	12	0.6	GROUP 1DX - 15.0 GM	A607419
HR-02344	0.009	0.26	0.5	0.02	2.1	0.3	0	8	0	GROUP 1DX - 15.0 GM	A607419
HR-02345	0.006	0.19	0.4	0.02	1.1	0.3	0.07	7	0	GROUP 1DX - 15.0 GM	A607419
HR-02346	0.084	0.17	0.2	0.02	3.7	0.2	0.06	9	0	GROUP 1DX - 15.0 GM	A607419
HR-02347	0.067	0.06	0.1	0.01	1.5	0.1	0	6	0	GROUP 1DX - 15.0 GM	A607419

SAMPLES	GPS ID	Datum	Easting	Northing	Date Time	Elevation	Mo	Cu	Pb	Zn	Ag	Ni	Co
HR-02348	HR02348	NAD83-9V	510096	6862519	27/08/2006 15:30	1460	0.3	14.5	10.7	77	0	18.1	8.7
HR-02349	HR02349	NAD83-9V	510176	6862582	27/08/2006 15:41	1472.5	1.3	36	10.9	106	0.1	19.8	14.8
HR-02350	HR02350	NAD83-9V	510236	6862660	27/08/2006 15:57	1458.2	1.3	41.3	14.7	199	0.2	39.6	14.8
HR-02351	HR02351	NAD83-9V	510284	6862752	27/08/2006 16:08	1437.7	0.7	7.1	4.2	25	0	5.4	4.2
HR-02352	HR02352	NAD83-9V	510355	6862824	27/08/2006 16:17	1429.8	1.3	43.9	23.9	109	0	34.2	15.6
HR-02353	HR02353	NAD83-9V	510415	6862906	27/08/2006 16:24	1460.6	1	69.2	19.9	106	0.1	40.2	31.6
HR-02354	HR02354	NAD83-9V	510509	6862946	27/08/2006 16:40	1417.9	0.5	37.7	16.3	97	0	37.4	21.1
HR-02355	HR02355	NAD83-9V	510529	6863047	27/08/2006 16:50	1422.5	0.3	11.5	5.8	12	0	7.6	4.5
HR-02356	HR02356	NAD83-9V	510579	6863141	27/08/2006 17:00	1400.9	1.5	80.4	25.4	107	0.1	54.9	28.4
HR-02410	HR02410	NAD83-9V	501832	6871593	26/08/2006 11:02	1941.9	0.4	63	32.4	128	0	55.5	41.2
HR-02411	HR02411	NAD83-9V	501934	6871570	26/08/2006 11:26	1907.7	1.5	67.7	66.5	119	0	54.3	42.6
HR-02412	HR02412	NAD83-9V	502031	6871540	26/08/2006 11:35	1887	0.6	82.1	44.9	144	0	68.3	54.4
HR-02413	HR02413	NAD83-9V	502131	6871512	26/08/2006 11:42	1872.4	1	90.3	39.6	99	0.2	45.8	30.5
HR-02414	HR02414	NAD83-9V	502225	6871503	26/08/2006 11:50	1830.3	5.5	97	43.7	121	0.7	71.7	30.7
HR-02415	HR02415	NAD83-9V	502325	6871482	26/08/2006 11:57	1806.9	0.5	85.3	42.5	119	0	51.2	35.9
HR-02416	HR02416	NAD83-9V	502428	6871458	26/08/2006 12:04	1797.7	0.5	57.6	34.6	95	0	35.2	19.7
HR-02417	HR02417	NAD83-9V	502530	6871411	26/08/2006 12:12	1782.2	6.2	79.6	40	114	0.2	50.7	32
HR-02418	HR02418	NAD83-9V	502654	6871379	26/08/2006 12:20	1749.9	0.9	61	28.1	100	0	39.9	18.6
HR-02419	HR02419	NAD83-9V	502739	6871355	26/08/2006 12:27	1747.1	0.6	28.4	16.9	66	0	21.1	10.2
HR-02420	HR02420	NAD83-9V	502832	6871320	26/08/2006 12:34	1736.8	0.6	55.5	27.8	105	0	36.8	15.3
HR-02421	HR02421	NAD83-9V	502916	6871289	26/08/2006 12:43	1726.1	0.5	42.1	26.1	67	0	25.5	17.3
HR-02422	HR02422	NAD83-9V	502972	6871240	26/08/2006 12:56	1704.4	1	32.9	20.7	75	0	24.4	11
HR-02423	HR02423	NAD83-9V	503071	6871170	26/08/2006 13:05	1701.4	0.8	39.7	39.9	100	0	36.4	24.4
HR-02424	HR02424	NAD83-9V	503169	6871158	26/08/2006 13:26	1687.4	1.2	78.2	66	85	0	38.8	44.7
HR-02425	HR02425	NAD83-9V	503235	6871072	26/08/2006 13:35	1700.5	0.5	38.1	26.7	83	0	32.6	23.3
HR-02426	HR02426	NAD83-9V	503324	6871026	26/08/2006 13:46	1701.1	0.4	47.4	27.9	92	0	38	20.4
HR-02427	HR02427	NAD83-9V	503411	6870965	26/08/2006 13:58	1701.4	0.5	48.6	35.1	109	0	46.9	20.3
HR-02428	HR02428	NAD83-9V	503521	6870784	26/08/2006 14:16	1670.9	0.4	30.4	23.7	89	0	34.7	13.2
HR-02429	HR02429	NAD83-9V	503575	6870688	26/08/2006 14:34	1659.9	0.3	29.5	19.5	84	0	30.8	12.4
HR-02430	HR02430	NAD83-9V	503628	6870594	26/08/2006 14:45	1637.7	0.3	22.8	17.5	74	0	25.8	9.9
HR-02431	HR02431	NAD83-9V	503685	6870504	26/08/2006 14:54	1627.9	0.5	25.7	23.3	73	0	23.6	11.6
HR-02432	HR02432	NAD83-9V	503756	6870429	26/08/2006 15:04	1627.9	0.4	26.8	22.9	77	0	26.6	13.2
HR-02433	HR02433	NAD83-9V	503805	6870347	26/08/2006 15:13	1617	0.2	21.6	15.4	44	0	15.5	8.8
HR-02434	HR02434	NAD83-9V	503828	6870198	26/08/2006 15:28	1605.4	0.5	21	20.1	70	0	21.4	9.5
HR-02435	HR02435	NAD83-9V	503888	6870116	26/08/2006 15:36	1563.6	0.3	33.8	22.5	111	0	33.6	10.4
HR-02436	HR02436	NAD83-9V	503938	6870027	26/08/2006 15:58	1528.6	0.4	28.4	22.8	83	0	25.5	11.9
HR-02437	HR02437	NAD83-9V	504010	6869961	26/08/2006 16:06	1507.8	0.4	32.8	25.7	89	0	30.6	14.2
HR-02438	HR02438	NAD83-9V	497808	6868515	28/08/2006 16:58	1586.2	0.4	32.3	34.6	104	0	24.6	18
HR-02439	HR02439	NAD83-9V	497785	6868366	28/08/2006 17:09	1571.2	0.4	42.1	38.7	140	0	26.6	9.2
HR-02440	HR02440	NAD83-9V	497886	6868252	28/08/2006 17:21	1564.5	0.5	48.9	57.8	205	0.1	31.7	21
HR-02445	HR02445	NAD83-9V	499785	6870668	26/08/2006 13:56	1623.1	0.4	59	34.2	88	0	32.6	21.3
HR-02446	HR02446	NAD83-9V	499857	6870599	26/08/2006 14:06	1622.5	0.5	42.8	38	88	0	32.5	24.7
HR-02447	HR02447	NAD83-9V	499938	6870507	26/08/2006 14:15	1612.4	0.5	52.9	40	102	0	41.1	28.6
HR-02448	HR02448	NAD83-9V	500018	6870450	26/08/2006 14:27	1620.6	0.2	14.5	13.1	42	0	9.5	7
HR-02449	HR02449	NAD83-9V	500085	6870364	26/08/2006 14:37	1613	0.7	62.9	46.8	138	0	51.3	38.1
HR-02450	HR02450	NAD83-9V	500179	6870304	26/08/2006 14:49	1602	0.3	42.5	27.8	104	0	34.8	20.9
HR-02451	HR02451	NAD83-9V	500288	6870258	26/08/2006 14:58	1592.9	0.2	36.8	20	95	0	31.9	16.3
HR-02452	HR02452	NAD83-9V	500376	6870208	26/08/2006 15:08	1584	0.3	28.9	23.4	66	0	20.4	13.4
HR-02453	HR02453	NAD83-9V	500471	6870190	26/08/2006 15:19	1573.1	0.8	82.8	95.4	126	0	60.3	56.4
HR-02454	HR02454	NAD83-9V	500566	6870137	26/08/2006 15:32	1564.5	0.4	50.6	31.7	81	0	35.3	21.2
HR-02455	HR02455	NAD83-9V	500695	6870096	26/08/2006 15:42	1572.5	0.8	50	46	107	0	42.7	37.1
HR-02456	HR02456	NAD83-9V	500800	6870072	26/08/2006 15:51	1570.3	0.9	51.9	47	111	0	50.5	37.4
HR-02457	HR02457	NAD83-9V	500897	6870031	26/08/2006 15:59	1545.6	0.5	54.1	49.5	142	0	40.6	27.5
HR-02458	HR02458	NAD83-9V	530169	6859180	28/08/2006 14:52	1916.3	0.3	23.9	14.8	57	0	24	10.1
HR-02459	HR02459	NAD83-9V	530251	6859239	28/08/2006 14:59	1910.2	0.6	24.1	14.6	56	0	23.9	12.2
HR-02461	HR02461	NAD83-9V	499722	6870754	26/08/2006 13:42	1617.9	0.6	37.5	36.3	106	0	30.5	18.8
HR-02462	HR02462	NAD83-9V	499632	6870782	26/08/2006 13:32	1632.5	0.4	31.5	28	62	0	28	16.4

SAMPLES	Mn	Fe	As	U	Au	Th	Sr	Cd	Sb	Bi	V	Ca	P	La	Cr	Mg	Ba	Ti	B	Al
HR-02348	441	2.33	1.3	0.7	0	4.4	144	0.4	0	0.2	46	2.16	0.114	17	46	1.89	235	0.106	1	2.87
HR-02349	457	1.61	5.6	2.3	2.5	1.1	95	0.8	0.3	0.2	14	1.15	0.11	23	15	0.58	127	0.029	1	1.41
HR-02350	361	2.76	8.2	2.4	2.5	3.2	165	1.4	0.3	0.4	33	1.79	0.162	28	32	1.31	226	0.053	1	2.37
HR-02351	167	0.91	2	0.6	0.9	0.1	20	0.1	0.1	0.1	10	0.06	0.058	4	5	0.09	33	0.006	0	0.53
HR-02352	311	4.47	28.6	2.9	2	4.8	38	0.2	0.4	0.8	19	0.08	0.071	24	22	0.55	59	0.015	0	2.12
HR-02353	542	2.86	12.2	2.1	2	2.4	37	0.2	0.2	0.4	20	0.16	0.069	27	23	0.66	58	0.031	0	1.71
HR-02354	436	3.09	16	1.7	2	2.9	47	0.1	0.2	0.6	14	0.31	0.056	26	19	0.65	42	0.032	0	1.72
HR-02355	91	0.66	3	0.7	0	0.3	14	0	0	0.1	3	0.06	0.035	10	3	0.06	15	0.013	0	0.68
HR-02356	551	4.86	27.3	3.1	6.8	17.7	57	0.2	0.3	2.1	18	0.17	0.058	48	22	0.86	29	0.106	0	1.72
HR-02410	703	4.33	44.4	2.5	6.6	17.1	13	0	0.6	0.4	9	0.06	0.038	15	24	0.76	11	0.002	0	1.69
HR-02411	914	4.12	40.9	2.6	4.5	16.3	15	0.1	0.5	0.4	9	0.09	0.05	25	26	0.7	12	0.002	0	1.56
HR-02412	861	4.59	35.8	2.8	2.4	16.7	19	0.1	0.8	0.4	11	0.1	0.064	34	28	0.8	13	0.003	0	1.72
HR-02413	779	2.99	43.1	1	1.4	9.8	78	0.7	0.4	0.4	8	2.16	0.061	22	13	1.15	11	0.001	1	0.72
HR-02414	1354	4.59	68.3	1.9	4.1	8.9	14	1.3	2.2	0.8	6	0.14	0.042	40	9	0.28	26	0.001	0	0.68
HR-02415	904	4.14	33.1	1.3	1.8	14	13	0.1	0.3	0.5	12	0.09	0.045	44	26	0.87	21	0.003	0	1.92
HR-02416	622	3.62	25.6	1.1	1.5	9.9	7	0.1	0.3	0.4	12	0.03	0.043	31	23	0.67	29	0.004	0	1.74
HR-02417	889	3.99	42.8	1.8	3.9	8.8	70	0.6	1	0.6	8	2.48	0.053	23	15	1.04	15	0.002	1	0.97
HR-02418	700	3.78	27.1	1.2	2.6	8.9	10	0.1	0.3	0.5	12	0.08	0.053	26	26	0.76	22	0.003	0	1.72
HR-02419	428	2.35	13.2	0.7	1.2	3.8	4	0.1	0.1	0.3	9	0.03	0.058	15	17	0.46	22	0.006	0	1.31
HR-02420	448	4.08	41.8	4.1	1.6	5.4	15	0.1	0.2	0.5	12	0.14	0.058	18	29	0.9	15	0.003	0	1.94
HR-02421	375	2.85	21.7	2.1	0.8	4	16	0.1	0.1	0.3	12	0.15	0.055	16	19	0.88	29	0.006	1	1.52
HR-02422	435	2.83	21.9	2.2	0.7	3.2	16	0.1	0.3	0.4	12	0.12	0.074	12	17	0.49	29	0.004	0	1.13
HR-02423	735	3.48	23.8	2.5	1.6	5.1	6	0.1	0.3	0.4	13	0.05	0.085	22	22	0.57	22	0.004	0	1.5
HR-02424	864	3.26	43.7	1.4	1.3	6.6	7	0.1	0.3	0.5	13	0.04	0.076	33	22	0.64	20	0.007	0	1.51
HR-02425	553	3.07	20.2	1.2	0.7	8.2	9	0.1	0.3	0.3	10	0.06	0.052	25	21	0.58	20	0.004	0	1.4
HR-02426	582	3.52	24.1	1.4	1.2	10.5	12	0.1	0.3	0.4	11	0.09	0.047	33	22	0.7	18	0.003	0	1.5
HR-02427	541	3.95	10.6	1.9	1.5	6.6	16	0.1	0.3	0.5	13	0.19	0.079	20	25	0.66	34	0.005	0	1.7
HR-02428	324	3.19	6.6	1.7	1.6	6.8	21	0.1	0.3	0.3	10	0.29	0.061	15	15	0.49	29	0.004	0	1.21
HR-02429	236	2.96	6.9	1.2	1.1	7.2	15	0.1	0.2	0.3	10	0.18	0.056	14	17	0.59	18	0.004	0	1.31
HR-02430	263	3.01	9.5	0.9	1.5	4.8	6	0.1	0.2	0.3	11	0.04	0.059	14	19	0.59	26	0.004	0	1.5
HR-02431	469	3.23	22.4	1	0.5	2.8	4	0.1	0.3	0.4	14	0.02	0.082	14	17	0.55	24	0.005	0	1.39
HR-02432	509	3.33	10.3	0.9	1.1	6	7	0.1	0.2	0.3	12	0.06	0.057	16	19	0.62	27	0.003	0	1.48
HR-02433	394	2.04	9.2	0.6	0.8	1.8	5	0	0.1	0.2	8	0.05	0.043	10	11	0.35	24	0.005	0	1.11
HR-02434	410	2.93	27	0.7	0.5	1.1	7	0.1	0.2	0.3	12	0.06	0.098	13	17	0.55	29	0.002	0	1.29
HR-02435	188	2.98	6.9	1.4	11.9	5.4	25	0.1	0.2	0.3	9	0.82	0.064	18	15	0.44	21	0.003	0	1.17
HR-02436	600	3.15	29.8	0.9	0	2.6	8	0.1	0.3	0.4	13	0.12	0.099	16	17	0.52	34	0.004	0	1.44
HR-02437	632	3.42	37.8	0.9	1	5.7	7	0.1	0.3	0.4	12	0.05	0.082	21	19	0.64	30	0.004	0	1.57
HR-02438	733	3.26	9.6	1.7	1.6	6	7	0.1	0.5	0.5	9	0.03	0.082	27	15	0.52	24	0.003	0	1.51
HR-02439	278	3.18	9.6	6.1	2.9	4	38	0.1	0.6	0.5	8	0.73	0.074	14	16	0.45	23	0.002	1	1.36
HR-02440	869	3.58	11.7	5.2	2.5	5.6	41	0.2	0.6	0.5	10	0.58	0.115	16	16	0.52	29	0.004	0	1.56
HR-02445	773	2.95	7.7	0.9	2	9.9	66	0.1	0.4	0.4	10	2.61	0.066	20	12	0.49	36	0.012	0	0.99
HR-02446	772	2.93	8.3	0.8	0	10.8	156	0.1	0.4	0.4	4	9.14	0.048	14	10	0.5	21	0.004	0	0.81
HR-02447	897	3.14	10.1	0.9	1.4	12.4	68	0.2	0.4	0.5	6	3.58	0.057	22	13	0.5	30	0.005	0	1.02
HR-02448	1329	1.86	5	1	1.1	0.8	74	0.1	0.2	0.1	6	4.52	0.078	7	3	0.21	45	0.015	0	0.66
HR-02449	1443	3.84	11.8	1.4	2.5	10.5	24	0.2	0.5	0.5	8	0.72	0.066	28	15	0.57	28	0.004	0	1.07
HR-02450	663	3.23	8.1	0.9	1.1	10.3	142	0.1	0.3	0.5	6	6.41	0.058	22	16	0.62	19	0.003	0	1.15
HR-02451	646	3.29	3.2	1	0	5.8	16	0.1	0.2	0.4	18	0.27	0.058	24	21	0.63	57	0.011	0	1.59
HR-02452	706	3.09	7	0.7	1	2.9	5	0.1	0.2	0.5	14	0.07	0.073	20	15	0.36	19	0.009	0	1.34
HR-02453	1684	4.84	22.2	1.3	1.8	18.1	12	0.1	0.5	0.9	16	0.08	0.059	69	27	0.76	25	0.004	0	1.86
HR-02454	1272	3.22	5.3	0.6	1.1	4.5	8	0.1	0.2	0.5	17	0.16	0.054	26	22	0.66	28	0.01	0	1.43
HR-02455	1135	4.06	11.9	1.6	5	14.3	9	0	0.5	0.5	12	0.04	0.053	45	21	0.61	22	0.003	1	1.59
HR-02456	1116	4.43	11.8	1.7	2.8	15.4	16	0	0.5	0.6	12	0.11	0.057	45	23	0.67	17	0.003	1	1.62
HR-02457	1164	4.24	11.6	1.5	1.4	7	21	0.2	0.5	0.7	12	0.62	0.092	24	15	0.45	35	0.008	0	1.16
HR-02458	339	2.74	7	1.1	2.2	9.3	12	0	0.3	0.3	11	0.11	0.075	35	12	0.45	27	0.005	1	1.39
HR-02459	505	3.04	9.2	1.6	1.6	8.3	11	0.1	0.6	0.3	19	0.11	0.059	28	16	0.45	56	0.013	1	1.55
HR-02461	837	3.05	8	1	3.7	8.7	115	0.2	0.5	0.4	7	4.8	0.073	22	11	0.49	28	0.008	0	0.83
HR-02462	419	2.61	5.9	0.7	0.7	8.5	149	0.1	0.3	0.3	5	8.32	0.046	13	11	0.51	25	0.007	1	0.87

SAMPLES	Na	K	W	Hg	Sc	Tl	S	Ga	Se	Analysis:	Acme file #
HR-02348	0.132	0.13	0.1	0.02	4.2	0.2	0	10	0	GROUP 1DX - 15.0 GM	A607419
HR-02349	0.039	0.05	0.1	0.02	0.9	0.1	0.13	4	1	GROUP 1DX - 15.0 GM	A607419
HR-02350	0.078	0.08	0.8	0.01	2.4	0.2	0.14	7	1.5	GROUP 1DX - 15.0 GM	A607419
HR-02351	0.014	0.04	0.1	0.02	0.1	0.1	0	3	0	GROUP 1DX - 15.0 GM	A607419
HR-02352	0.006	0.05	0.3	0.02	0.9	0.1	0	6	0	GROUP 1DX - 15.0 GM	A607419
HR-02353	0.013	0.07	0.3	0.02	1.1	0.1	0.08	6	0	GROUP 1DX - 15.0 GM	A607419
HR-02354	0.02	0.1	0.4	0.01	0.8	0.2	0	5	0	GROUP 1DX - 15.0 GM	A607419
HR-02355	0.017	0.02	0.1	0.01	0.2	0.1	0	2	0	GROUP 1DX - 15.0 GM	A607419
HR-02356	0.009	0.16	0.5	0.01	1.4	0.2	0	5	0.6	GROUP 1DX - 15.0 GM	A607419
HR-02410	0.002	0.01	0	0	1.3	0	0	5	0	GROUP 1DX - 15.0 GM	A607419
HR-02411	0.003	0.02	0	0.01	1.4	0	0	5	0	GROUP 1DX - 15.0 GM	A607419
HR-02412	0.002	0.02	0	0	1.5	0	0	5	0	GROUP 1DX - 15.0 GM	A607419
HR-02413	0.001	0.02	0.1	0	2.5	0	0	2	0	GROUP 1DX - 15.0 GM	A607419
HR-02414	0.003	0.02	0.1	0.03	3.6	0	0	2	0.9	GROUP 1DX - 15.0 GM	A607419
HR-02415	0.002	0.04	0	0.01	1.5	0	0	5	0	GROUP 1DX - 15.0 GM	A607419
HR-02416	0.005	0.04	0	0.01	1.1	0	0	5	0	GROUP 1DX - 15.0 GM	A607419
HR-02417	0.002	0.03	0.1	0.01	2.1	0	0.06	3	0.6	GROUP 1DX - 15.0 GM	A607419
HR-02418	0.002	0.04	0	0	1.4	0	0	4	0	GROUP 1DX - 15.0 GM	A607419
HR-02419	0.006	0.03	0	0.02	0.7	0	0	4	0	GROUP 1DX - 15.0 GM	A607419
HR-02420	0.002	0.02	0	0.01	1.6	0	0	6	0	GROUP 1DX - 15.0 GM	A607419
HR-02421	0.005	0.03	0.1	0.01	1.4	0	0	4	0	GROUP 1DX - 15.0 GM	A607419
HR-02422	0.004	0.04	0	0.01	1.1	0	0	3	0	GROUP 1DX - 15.0 GM	A607419
HR-02423	0.003	0.03	0.1	0.01	0.9	0	0	4	0	GROUP 1DX - 15.0 GM	A607419
HR-02424	0.005	0.03	0	0.01	1.1	0	0	5	0	GROUP 1DX - 15.0 GM	A607419
HR-02425	0.004	0.03	0.1	0.01	1.1	0	0	4	0	GROUP 1DX - 15.0 GM	A607419
HR-02426	0.002	0.03	0	0.01	1.3	0	0	4	0	GROUP 1DX - 15.0 GM	A607419
HR-02427	0.004	0.03	0	0.02	1.8	0	0	5	0	GROUP 1DX - 15.0 GM	A607419
HR-02428	0.003	0.03	0	0.01	1.4	0	0	3	0	GROUP 1DX - 15.0 GM	A607419
HR-02429	0.003	0.02	0	0.01	1.1	0	0	3	0	GROUP 1DX - 15.0 GM	A607419
HR-02430	0.003	0.02	0	0.01	0.9	0	0	4	0	GROUP 1DX - 15.0 GM	A607419
HR-02431	0.003	0.03	0.1	0.02	0.7	0.1	0	4	0	GROUP 1DX - 15.0 GM	A607419
HR-02432	0.002	0.03	0	0.01	1	0	0	4	0	GROUP 1DX - 15.0 GM	A607419
HR-02433	0.01	0.03	0	0.02	0.5	0	0	3	0	GROUP 1DX - 15.0 GM	A607419
HR-02434	0.004	0.04	0.1	0.02	0.4	0	0	4	0	GROUP 1DX - 15.0 GM	A607419
HR-02435	0.003	0.02	0	0.02	1.6	0	0.06	3	0	GROUP 1DX - 15.0 GM	A607419
HR-02436	0.005	0.04	0.1	0.01	0.7	0	0	4	0	GROUP 1DX - 15.0 GM	A607419
HR-02437	0.003	0.04	0.1	0.01	1.1	0	0	4	0	GROUP 1DX - 15.0 GM	A607419
HR-02438	0.005	0.04	0.1	0.01	0.9	0.1	0	4	0	GROUP 1DX - 15.0 GM	A607419
HR-02439	0.006	0.02	0	0.02	1.4	0	0.07	3	0.5	GROUP 1DX - 15.0 GM	A607419
HR-02440	0.008	0.04	0	0.03	1.9	0	0.06	4	0.5	GROUP 1DX - 15.0 GM	A607419
HR-02445	0.009	0.03	0	0.01	1.7	0	0	2	0	GROUP 1DX - 15.0 GM	A607419
HR-02446	0.003	0.04	0	0.01	1.6	0	0	2	0	GROUP 1DX - 15.0 GM	A607419
HR-02447	0.003	0.05	0	0.01	1.8	0	0	3	0	GROUP 1DX - 15.0 GM	A607419
HR-02448	0.024	0.02	0.1	0.01	1	0	0	1	0	GROUP 1DX - 15.0 GM	A607419
HR-02449	0.003	0.03	0.1	0.05	3.1	0	0	3	0	GROUP 1DX - 15.0 GM	A607419
HR-02450	0.003	0.03	0	0.01	1.6	0	0	3	0	GROUP 1DX - 15.0 GM	A607419
HR-02451	0.011	0.06	0	0.01	1.5	0	0	4	0	GROUP 1DX - 15.0 GM	A607419
HR-02452	0.009	0.02	0	0.01	0.8	0	0	4	0	GROUP 1DX - 15.0 GM	A607419
HR-02453	0.003	0.03	0	0.02	2.3	0	0	5	0	GROUP 1DX - 15.0 GM	A607419
HR-02454	0.009	0.03	0	0.01	1.2	0	0	4	0	GROUP 1DX - 15.0 GM	A607419
HR-02455	0.005	0.03	0	0.01	1.7	0	0	4	0	GROUP 1DX - 15.0 GM	A607419
HR-02456	0.003	0.03	0	0.02	1.9	0	0	5	0	GROUP 1DX - 15.0 GM	A607419
HR-02457	0.007	0.04	0.1	0.04	2.9	0	0	3	0	GROUP 1DX - 15.0 GM	A607419
HR-02458	0.003	0.03	0	0	1.2	0	0	3	0	GROUP 1DX - 15.0 GM	A607419
HR-02459	0.005	0.05	0.1	0.01	2	0.1	0	4	0	GROUP 1DX - 15.0 GM	A607419
HR-02461	0.004	0.04	0.1	0.01	2.5	0	0	2	0	GROUP 1DX - 15.0 GM	A607419
HR-02462	0.005	0.04	0	0.01	1.6	0	0	2	0	GROUP 1DX - 15.0 GM	A607419

SAMPLES	GPS ID	Datum	Easting	Northing	Date Time	Elevation	Mo	Cu	Pb	Zn	Ag	Ni	Co
HR-02463	HR02463	NAD83-9V	499542	6870776	26/08/2006 13:19	1661.2	1.6	90.8	54.5	156	0.1	58.7	53.5
HR-02464	HR02464	NAD83-9V	499444	6870780	26/08/2006 13:10	1694.4	1.1	76.9	53.1	109	0.1	39.4	48.3
HR-02465	HR02465	NAD83-9V	499349	6870798	26/08/2006 12:59	1703.8	0.7	14.1	58.8	299	0	12.1	9.4
HR-02466	HR02466	NAD83-9V	499239	6870861	26/08/2006 12:45	1707.5	0.8	157	93.6	231	0.2	75.6	75.1
HR-02467	HR02467	NAD83-9V	499167	6870930	26/08/2006 12:28	1704.7	0.5	55.9	47.4	106	0	38.5	24.8
HR-02468	HR02468	NAD83-9V	499137	6871047	26/08/2006 12:19	1702.6	0.6	109.3	136.8	182	0	72.1	54.3
HR-02469	HR02469	NAD83-9V	499131	6871172	26/08/2006 12:07	1705.4	0.2	64.6	86	144	0.1	51.1	30.8
HR-02470	HR02470	NAD83-9V	499105	6871259	26/08/2006 11:57	1717.9	0.3	28.8	70.3	110	0	43.1	23.7
HR-02471	HR02471	NAD83-9V	499014	6871298	26/08/2006 11:46	1717.5	0.5	94.5	97.1	191	0.1	75.5	41.5
HR-02472	HR02472	NAD83-9V	498880	6871386	26/08/2006 11:36	1721.8	0.5	51.4	39.2	133	0.1	54.2	22.1
HR-02473	HR02473	NAD83-9V	498785	6871416	26/08/2006 11:28	1727.6	0.4	51.6	47.6	131	0.1	53.2	23.6
HR-02474	HR02474	NAD83-9V	498682	6871377	26/08/2006 11:18	1716	1.5	20.1	134.5	182	0	30.4	19.4
HR-02475	HR02475	NAD83-9V	498584	6871351	26/08/2006 11:10	1713.3	0.4	37.2	33.1	84	0	28.2	19.8
HR-02476	HR02476	NAD83-9V	503290	6872119	26/08/2006 13:18	1902	0.5	43.6	56.3	99	0	36.5	27.4
HR-02477	HR02477	NAD83-9V	503385	6872089	26/08/2006 13:31	1905.6	1.3	85.5	62.6	157	0	62	37.8
HR-02478	HR02478	NAD83-9V	503481	6872058	26/08/2006 13:43	1874.2	1.1	43.2	39.4	75	0	24.6	9.2
HR-02479	HR02479	NAD83-9V	503667	6871980	26/08/2006 14:03	1837.9	0.8	71.8	48.4	127	0.1	59.8	37.8
HR-02480	HR02480	NAD83-9V	503776	6871995	26/08/2006 14:15	1826.1	0.7	88	52.4	128	0.1	60.2	38.9
HR-02481	HR02481	NAD83-9V	503908	6872133	26/08/2006 14:37	1804.1	0.4	41.1	26.4	75	0	32.8	16.5
HR-02482	HR02482	NAD83-9V	504128	6872155	26/08/2006 14:58	1767.8	1	70.1	42	106	0	45	46.7
HR-02483	HR02483	NAD83-9V	504209	6872216	26/08/2006 15:07	1773	0.8	69	42.7	96	0.1	42.9	47.1
HR-02484	HR02484	NAD83-9V	504304	6872264	26/08/2006 15:18	1770	0.5	54.3	33.6	103	0	47.2	34.3
HR-02485	HR02485	NAD83-9V	504425	6872280	26/08/2006 15:26	1763.9	0.9	69.6	43.5	95	0	39.7	39.5
HR-02486	HR02486	NAD83-9V	504517	6872322	26/08/2006 15:35	1760.2	0.4	48.6	33.5	98	0	46.9	32.3
HR-02487	HR02487	NAD83-9V	504596	6872377	26/08/2006 15:45	1753.8	1.2	39.9	22.6	71	0	32.7	15.1
HR-02488	HR02488	NAD83-9V	504683	6872429	26/08/2006 15:55	1734.6	0.7	53.8	34.6	77	0	34.8	24.3
HR-02489	HR02489	NAD83-9V	504775	6872465	26/08/2006 16:03	1715.1	1.3	67.1	54.5	83	0.1	41.7	30.1
HR-02490	HR02490	NAD83-9V	504870	6872505	26/08/2006 16:11	1717.2	0.7	79.5	61.6	69	0	45.6	43
HR-02491	HR02491	NAD83-9V	504952	6872552	26/08/2006 16:21	1658.1	0.9	60.8	38.8	91	0	37.6	12.7
HR-02492	HR02492	NAD83-9V	530355	6857492	28/08/2006 12:22	1552.7	0.4	27.3	36.5	62	0.1	24.1	16.9
HR-02493	HR02493	NAD83-9V	530459	6857567	28/08/2006 12:32	1548.7	0.3	52.6	59.6	129	0.1	52.5	31.2
HR-02494	HR02494	NAD83-9V	530527	6857644	28/08/2006 12:46	1531.6	0.3	39	30.5	38	0.1	49.7	27.5
HR-02495	HR02495	NAD83-9V	530610	6857709	28/08/2006 13:00	1530.1	0.4	47.5	48.4	91	0	34.6	27.5
HR-02496	HR02496	NAD83-9V	530709	6857755	28/08/2006 13:13	1517.6	0.3	84	43.4	84	0.1	50	32.5
HR-02497	HR02497	NAD83-9V	530788	6857825	28/08/2006 13:23	1546.9	0.5	63.8	55.9	91	0.1	41.5	24.5
HR-02498	HR02498	NAD83-9V	530914	6857871	28/08/2006 13:45	1529.2	0.6	61.6	52.5	115	0.1	55.1	28.9
HR-02499	HR02499	NAD83-9V	531026	6857909	28/08/2006 13:56	1505.4	0.5	43.1	29.5	56	0	41.9	20.6
HR-02500	HR02500	NAD83-9V	531130	6857961	28/08/2006 14:08	1487.4	0.5	51.1	24.5	59	0	52.2	23.3
HR-04512	HR04512	NAD83-9V	527545	6859254	28/08/2006 11:08	1886.1	0.7	16.1	26.3	79	0	27.8	16.2
HR-04513	HR04513	NAD83-9V	527625	6859195	28/08/2006 11:22	1871.2	0.3	34.1	33.3	92	0	28.1	13.5
HR-04514	HR04514	NAD83-9V	527718	6859162	28/08/2006 11:30	1854.4	1	33.4	60.5	79	0	24.7	17.7
HR-04515	HR04515	NAD83-9V	527802	6859104	28/08/2006 11:40	1839.5	0.4	78.7	96.4	126	0	40.2	29.5
HR-04516	HR04516	NAD83-9V	527887	6859042	28/08/2006 11:48	1823.6	0.5	79.7	86.4	133	0.3	51.4	69.4
HR-04517	HR04517	NAD83-9V	527985	6859001	28/08/2006 11:56	1816.9	0.7	46	43.3	95	0	29	21.6
HR-04518	HR04518	NAD83-9V	528090	6859005	28/08/2006 12:03	1817.8	0.6	25.9	42.5	87	0	29.9	20
HR-04519	HR04519	NAD83-9V	528197	6859038	28/08/2006 12:15	1798.6	0.2	45.7	38.6	93	0	39.7	22.6
HR-04520	HR04520	NAD83-9V	528303	6859012	28/08/2006 12:24	1762	0.2	37.7	39.2	91	0	38	21.5
HR-04521	HR04521	NAD83-9V	528400	6859050	28/08/2006 12:37	1727	0.3	38	55.2	95	0.1	38.8	21.7
HR-04522	HR04522	NAD83-9V	528491	6859088	28/08/2006 12:51	1695	0.3	18.5	27.9	58	0	18.1	8.2
HR-04523	HR04523	NAD83-9V	528589	6859149	28/08/2006 13:03	1670.6	0.3	65.3	77.2	145	0	50	43.2
HR-04524	HR04524	NAD83-9V	528680	6859216	28/08/2006 13:14	1661.2	0.4	29.3	31.5	78	0	25	14.3
HR-04525	HR04525	NAD83-9V	528745	6859275	28/08/2006 13:23	1680.7	0.4	56.3	81.9	104	0	40.4	30.9
HR-04526	HR04526	NAD83-9V	528820	6859338	28/08/2006 13:34	1674.6	0.4	18.7	8.6	48	0	14.7	8.8
HR-04527	HR04527	NAD83-9V	528897	6859408	28/08/2006 13:45	1673.7	0.2	15.9	18.4	47	0	17.1	13.9
HR-04528	HR04528	NAD83-9V	528976	6859481	28/08/2006 13:53	1669.1	0.4	30.8	18.6	31	0	46.4	27.6
HR-04529	HR04529	NAD83-9V	529036	6859567	28/08/2006 14:04	1652.3	0.3	13.6	14.5	23	0	13.7	13.6
HR-04530	HR04530	NAD83-9V	529107	6859659	28/08/2006 14:13	1634.9	0.3	24.3	19.2	34	0	18.3	13.5

SAMPLES	Mn	Fe	As	U	Au	Th	Sr	Cd	Sb	Bi	V	Ca	P	La	Cr	Mg	Ba	Ti	B	Al
HR-02463	1701	4.64	12.5	3.1	6.5	12.8	15	0.1	0.7	0.9	15	0.21	0.067	44	31	0.85	32	0.004	1	2.03
HR-02464	1557	3.51	7.2	2.7	2.8	9	9	0.1	0.4	0.7	12	0.07	0.073	42	19	0.56	29	0.008	1	1.56
HR-02465	747	1.54	13.3	1.5	0.9	3	710	1.1	0.4	0.2	3	28.7	0.087	7	4	0.35	145	0.003	0	0.3
HR-02466	1398	4.32	16.2	6.3	3.6	20.5	15	0.1	0.5	1.2	14	0.08	0.09	37	22	0.78	26	0.005	0	1.79
HR-02467	850	3.71	11.9	1.6	3.8	15.6	66	0.1	0.3	0.7	12	3.15	0.054	21	19	0.86	26	0.004	2	1.59
HR-02468	1457	4.54	23.1	3.7	4.4	21.2	13	0.1	0.6	1.2	14	0.08	0.054	42	26	0.94	29	0.008	0	1.96
HR-02469	1226	4.06	13.7	1.3	4.1	12.5	17	0.1	0.4	0.8	11	0.22	0.076	25	20	0.73	30	0.006	0	1.61
HR-02470	732	4.12	15.6	1	1.8	9.2	10	0.1	0.4	0.8	11	0.08	0.056	20	20	0.65	25	0.005	0	1.67
HR-02471	1492	4.49	42.9	1.3	2.5	10.4	23	0.1	0.5	1.2	10	0.16	0.054	25	18	0.67	28	0.006	1	1.5
HR-02472	472	4.61	11.4	1.3	1.9	14.6	49	0.1	0.7	0.6	10	0.64	0.096	38	18	0.7	21	0.002	0	1.5
HR-02473	957	4.37	11.2	1.1	2.1	9.8	47	0.1	0.6	0.6	11	0.62	0.101	26	18	0.68	35	0.006	1	1.63
HR-02474	13047	5.18	25.9	1.7	2.5	1.9	28	0.7	0.9	0.5	11	0.26	0.156	23	8	0.24	70	0.005	0	1.14
HR-02475	593	3.29	9.3	1.9	2.7	7.1	11	0.1	0.4	0.5	13	0.12	0.063	25	17	0.67	30	0.005	0	1.56
HR-02476	918	3.25	22.1	2	2.3	14.8	15	0.1	0.4	0.3	12	0.1	0.05	17	18	0.6	15	0.002	0	1.35
HR-02477	563	3.86	31.9	4.8	2.2	7.5	13	0.1	0.7	0.7	26	0.07	0.115	13	22	0.65	32	0.017	0	1.69
HR-02478	238	3.43	21.8	1.9	1.2	4.2	8	0.1	0.6	0.5	23	0.05	0.096	13	19	0.51	23	0.015	0	1.39
HR-02479	696	4.1	19.3	3	2	15.3	24	0.1	0.5	0.6	8	0.22	0.063	15	14	0.52	16	0.004	1	1.09
HR-02480	678	4.25	31.9	4	1.8	16	15	0.2	0.7	0.7	12	0.11	0.07	19	18	0.7	18	0.005	0	1.49
HR-02481	324	2.84	7.6	1.2	1	10.6	16	0.1	0.3	0.3	9	0.19	0.065	13	12	0.43	19	0.006	0	0.94
HR-02482	793	3.74	23.1	4.3	2.2	16.2	12	0	0.5	0.5	12	0.07	0.058	23	20	0.67	18	0.004	0	1.48
HR-02483	819	3.45	21.5	3.2	2.1	15.6	12	0.1	0.5	0.4	12	0.06	0.046	18	21	0.63	18	0.004	0	1.45
HR-02484	814	3.82	16.5	2.4	2.4	14.7	20	0	0.6	0.4	13	0.09	0.046	23	24	0.78	20	0.007	0	1.7
HR-02485	1033	3.88	16.7	3	2.8	12.7	13	0.1	0.5	0.5	16	0.05	0.05	21	24	0.77	16	0.006	0	1.74
HR-02486	863	3.83	12.9	1.7	0.8	12.8	21	0.1	0.5	0.4	12	0.11	0.05	20	23	0.82	15	0.005	3	1.72
HR-02487	751	2.9	17.8	1.2	2.3	4.5	10	0.3	0.5	0.3	12	0.08	0.08	16	20	0.57	22	0.005	0	1.18
HR-02488	781	3.01	19.2	1.2	0.9	11	15	0.1	0.4	0.4	9	0.12	0.06	32	16	0.69	12	0.003	2	1.24
HR-02489	1129	3.18	29.3	1	1.3	11.8	17	0.2	0.5	0.5	10	0.2	0.059	33	18	0.78	21	0.002	0	1.25
HR-02490	739	2.34	17.6	2.7	2.1	20.5	6	0.1	0.5	0.4	10	0.06	0.055	42	15	0.46	24	0.002	0	1.37
HR-02491	557	4.7	42.7	2.4	2.7	16.3	7	0.1	1	0.8	20	0.03	0.092	24	26	0.77	22	0.004	0	1.95
HR-02492	677	3.25	8.8	1	1.7	11.9	7	0	1	0.3	11	0.07	0.081	30	15	0.38	25	0.006	0	1.46
HR-02493	785	3.85	9.5	3.2	3	17.9	17	0.1	0.6	0.5	11	0.2	0.054	36	19	0.64	30	0.002	0	1.58
HR-02494	841	3.2	9.4	1.7	2	15.2	17	0	0.5	0.5	9	0.17	0.053	33	14	0.52	41	0.004	0	1.37
HR-02495	575	3.22	10.6	2.2	2.6	14.6	11	0	0.4	0.4	10	0.14	0.058	45	15	0.57	25	0.002	0	1.46
HR-02496	805	3.46	10.7	1.7	1.5	17	19	0.1	1	0.3	7	0.2	0.05	26	12	0.46	36	0.002	1	1.19
HR-02497	1445	4.02	32.6	2.6	2.7	12.6	17	0.1	1.7	0.3	8	0.23	0.065	28	11	0.38	47	0.001	1	1.3
HR-02498	814	4.08	10.1	2.8	2.2	12.8	19	0.1	0.7	0.5	9	0.35	0.074	27	18	0.61	31	0.002	1	1.4
HR-02499	743	3.4	15.1	1.4	2.6	18.8	22	0.1	0.8	0.3	11	0.23	0.062	31	28	0.67	31	0.002	1	1.44
HR-02500	799	4.07	15.8	1.2	2.4	13	18	0.1	0.7	0.3	21	0.25	0.061	22	48	1.02	24	0.003	0	1.73
HR-04512	1084	3.77	30.2	1	2.3	7.4	6	0.1	1.3	0.3	13	0.02	0.077	23	13	0.33	43	0.005	1	1.75
HR-04513	1105	3.02	7.7	1.7	2.1	11.6	7	0.1	0.5	0.4	8	0.08	0.044	21	15	0.48	46	0.001	0	1.74
HR-04514	1449	2.42	10.5	1.5	1.4	10.1	10	0.4	0.7	0.4	6	0.1	0.07	19	13	0.35	44	0.003	1	1.46
HR-04515	1341	4.54	10.3	1.7	1.8	22.4	24	0.2	0.7	0.7	10	0.27	0.058	16	22	0.79	38	0.001	0	2.24
HR-04516	1115	4.32	19.8	1.8	2.7	22.7	29	0.1	0.7	1	8	0.33	0.049	25	20	0.73	22	0.001	0	1.9
HR-04517	1028	3.52	17.9	1.9	1.8	11.3	19	0.1	1.1	0.5	7	0.16	0.067	27	12	0.39	40	0.001	0	1.57
HR-04518	805	2.93	14.8	1.1	1.4	3.1	6	0.2	1.2	0.4	13	0.03	0.1	15	16	0.29	39	0.004	0	1.48
HR-04519	602	3.79	20.7	1.1	2.3	15	24	0.1	1.2	0.4	7	0.32	0.054	41	18	0.58	31	0.001	1	1.58
HR-04520	999	3.72	15.4	1.8	2.5	12.6	19	0.1	1.2	0.4	8	0.24	0.058	35	17	0.52	48	0.001	0	1.61
HR-04521	1097	3.54	10.8	1.9	2.2	11.8	29	0.1	0.7	0.4	5	0.25	0.056	32	12	0.4	62	0.002	1	1.35
HR-04522	381	2.01	8.4	1	0.9	3.6	14	0.1	0.5	0.2	7	0.15	0.056	23	7	0.22	49	0.003	0	1.06
HR-04523	1382	4.58	23.6	2.2	3.4	18.5	10	0.1	1.2	0.8	13	0.11	0.05	59	22	0.75	44	0.003	1	2.09
HR-04524	740	2.88	3.4	1.4	0	9.8	7	0.1	0.3	0.4	12	0.05	0.058	39	18	0.54	33	0.005	1	1.54
HR-04525	1079	4.24	14.8	2	3.1	17.8	10	0.1	1.1	0.8	11	0.18	0.047	37	26	0.9	43	0.004	0	1.98
HR-04526	459	2.08	1.4	0.8	0	1.7	6	0	0.2	0.4	12	0.03	0.071	21	13	0.37	25	0.007	0	1.13
HR-04527	538	2.55	16.1	0.8	0.9	12.9	4	0.1	0.5	0.2	1	0.03	0.037	26	3	0.26	24	0	0	1.35
HR-04528	1562	4.02	27.7	1.8	3.7	11.6	29	0.1	1	0.7	18	0.27	0.058	21	27	0.53	28	0	1	1.33
HR-04529	985	1.78	9	1.2	1.1	17.7	13	0	0.5	0.3	1	0.12	0.05	31	4	0.19	15	0.001	0	0.55
HR-04530	968	2.72	11.3	1.4	1.5	12	16	0.1	0.8	0.3	5	0.14	0.077	35	6	0.21	20	0.002	0	0.76



SAMPLES	Na	K	W	Hg	Sc	Tl	S	Ga	Se	Analysis:	Acme file #
HR-02463	0.005	0.04	0.1	0.04	2.1	0	0	6	0	GROUP 1DX - 15.0 GM	A607419
HR-02464	0.01	0.03	0.1	0.02	1.6	0	0	4	0	GROUP 1DX - 15.0 GM	A607419
HR-02465	0.002	0.01	0	0.05	1.1	0	0	1	0	GROUP 1DX - 15.0 GM	A607419
HR-02466	0.014	0.05	0.1	0.03	2.7	0.1	0	5	0	GROUP 1DX - 15.0 GM	A607420
HR-02467	0.008	0.06	0	0.01	2.8	0	0	4	0	GROUP 1DX - 15.0 GM	A607420
HR-02468	0.009	0.05	0	0.01	2.7	0	0	6	0	GROUP 1DX - 15.0 GM	A607420
HR-02469	0.007	0.02	0	0	3.2	0	0	5	0	GROUP 1DX - 15.0 GM	A607420
HR-02470	0.003	0.02	0.1	0.02	1.8	0	0	4	0	GROUP 1DX - 15.0 GM	A607420
HR-02471	0.006	0.03	0	0.01	4.5	0	0	5	0	GROUP 1DX - 15.0 GM	A607420
HR-02472	0.005	0.03	0	0.01	2.5	0	0	4	0	GROUP 1DX - 15.0 GM	A607420
HR-02473	0.012	0.03	0	0.01	3	0	0	4	0.7	GROUP 1DX - 15.0 GM	A607420
HR-02474	0.008	0.02	0.1	0.06	3	0	0.06	3	0	GROUP 1DX - 15.0 GM	A607420
HR-02475	0.009	0.04	0	0.01	1.5	0	0	5	0	GROUP 1DX - 15.0 GM	A607420
HR-02476	0.003	0.02	0	0.01	1.4	0	0	4	0	GROUP 1DX - 15.0 GM	A607420
HR-02477	0.007	0.05	0.1	0.02	1.7	0.1	0	5	0.9	GROUP 1DX - 15.0 GM	A607420
HR-02478	0.007	0.04	0.1	0.02	1.1	0.1	0	5	1.1	GROUP 1DX - 15.0 GM	A607420
HR-02479	0.003	0.03	0.1	0.03	2.4	0	0	3	0	GROUP 1DX - 15.0 GM	A607420
HR-02480	0.004	0.02	0.1	0.02	1.7	0	0	4	0	GROUP 1DX - 15.0 GM	A607420
HR-02481	0.008	0.02	0.1	0.01	1.5	0	0	3	0.7	GROUP 1DX - 15.0 GM	A607420
HR-02482	0.005	0.03	0	0.02	1.5	0	0	4	0	GROUP 1DX - 15.0 GM	A607420
HR-02483	0.005	0.03	0	0.02	1.4	0	0	4	0	GROUP 1DX - 15.0 GM	A607420
HR-02484	0.006	0.05	0	0.01	2	0	0	5	0	GROUP 1DX - 15.0 GM	A607420
HR-02485	0.006	0.03	0.1	0.02	1.8	0	0	5	0.6	GROUP 1DX - 15.0 GM	A607420
HR-02486	0.003	0.03	0	0	1.9	0	0	5	0	GROUP 1DX - 15.0 GM	A607420
HR-02487	0.007	0.03	0.1	0.02	1.7	0	0	3	0	GROUP 1DX - 15.0 GM	A607420
HR-02488	0.004	0.02	0	0.01	1.9	0	0	3	0.6	GROUP 1DX - 15.0 GM	A607420
HR-02489	0.002	0.03	0	0.02	2.2	0	0	3	0.6	GROUP 1DX - 15.0 GM	A607420
HR-02490	0.007	0.04	0	0.01	1.3	0.1	0	3	0	GROUP 1DX - 15.0 GM	A607420
HR-02491	0.008	0.03	0.1	0.02	1.8	0.1	0	6	0	GROUP 1DX - 15.0 GM	A607420
HR-02492	0.004	0.03	0	0.02	1.2	0	0	4	0	GROUP 1DX - 15.0 GM	A607420
HR-02493	0.003	0.05	0.1	0.02	2.1	0	0	4	0	GROUP 1DX - 15.0 GM	A607420
HR-02494	0.009	0.06	0	0.01	1.9	0	0	3	0	GROUP 1DX - 15.0 GM	A607420
HR-02495	0.005	0.04	0	0.01	1.4	0	0	4	0.5	GROUP 1DX - 15.0 GM	A607420
HR-02496	0.005	0.07	0	0.02	1.7	0	0	3	0	GROUP 1DX - 15.0 GM	A607420
HR-02497	0.003	0.06	0	0.05	2.8	0.1	0	3	0	GROUP 1DX - 15.0 GM	A607420
HR-02498	0.004	0.05	0	0.05	2.1	0.1	0	3	0	GROUP 1DX - 15.0 GM	A607420
HR-02499	0.004	0.06	0	0.02	2.1	0	0	4	0	GROUP 1DX - 15.0 GM	A607420
HR-02500	0.005	0.05	0	0.03	3	0	0	4	0	GROUP 1DX - 15.0 GM	A607420
HR-04512	0.004	0.05	0.1	0.01	1.7	0.1	0	3	0.5	GROUP 1DX - 15.0 GM	A607420
HR-04513	0.003	0.05	0	0.01	1.5	0.1	0	4	0	GROUP 1DX - 15.0 GM	A607420
HR-04514	0.007	0.06	0.1	0.03	1.3	0.1	0	3	0.7	GROUP 1DX - 15.0 GM	A607420
HR-04515	0.003	0.05	0	0.01	1.8	0.1	0	5	0	GROUP 1DX - 15.0 GM	A607420
HR-04516	0.003	0.05	0	0.03	2.8	0.1	0	5	0	GROUP 1DX - 15.0 GM	A607420
HR-04517	0.007	0.05	0	0.02	1.6	0.1	0	3	0	GROUP 1DX - 15.0 GM	A607420
HR-04518	0.008	0.05	0.1	0.02	1.1	0.1	0	4	0.7	GROUP 1DX - 15.0 GM	A607420
HR-04519	0.005	0.06	0	0.01	2.6	0	0	4	0	GROUP 1DX - 15.0 GM	A607420
HR-04520	0.006	0.05	0	0.01	2.5	0.1	0	4	0	GROUP 1DX - 15.0 GM	A607420
HR-04521	0.007	0.09	0	0.02	2.5	0.1	0	3	0.8	GROUP 1DX - 15.0 GM	A607420
HR-04522	0.016	0.06	0	0.02	1.1	0.1	0	2	0	GROUP 1DX - 15.0 GM	A607420
HR-04523	0.003	0.04	0.1	0.01	2.7	0.1	0	5	0	GROUP 1DX - 15.0 GM	A607420
HR-04524	0.01	0.03	0.1	0	1.1	0	0	4	0	GROUP 1DX - 15.0 GM	A607420
HR-04525	0.004	0.03	0	0.01	2	0	0	6	0	GROUP 1DX - 15.0 GM	A607420
HR-04526	0.013	0.03	0.1	0.01	0.5	0	0	4	0	GROUP 1DX - 15.0 GM	A607420
HR-04527	0.004	0.03	0	0.01	1	0	0	1	0	GROUP 1DX - 15.0 GM	A607420
HR-04528	0.003	0.03	0	0.01	6.6	0	0	2	0	GROUP 1DX - 15.0 GM	A607420
HR-04529	0.003	0.03	0	0.01	1.3	0	0	1	0	GROUP 1DX - 15.0 GM	A607420
HR-04530	0.004	0.04	0	0.01	1.5	0	0	1	0	GROUP 1DX - 15.0 GM	A607420

SAMPLES	GPS ID	Datum	Easting	Northing	Date Time	Elevation	Mo	Cu	Pb	Zn	Ag	Ni	Co
HR-04531	HR04531	NAD83-9V	529207	6859702	28/08/2006 14:25	1626.1	0.2	31.3	33.1	69	0	31	23.9
HR-04713	HR04713	NAD83-9V	500269	6886657	27/08/2006 12:14	1556.6	0.4	37.4	28.2	105	0	40.9	12.5
HR-04714	HR04714	NAD83-9V	500347	6886592	27/08/2006 12:33	1558.1	0.4	29	34.4	84	0	31	12.3
HR-04715	HR04715	NAD83-9V	500424	6886527	27/08/2006 12:39	1559.7	0.2	34.6	23.6	76	0	33.1	12.8
HR-04716	HR04716	NAD83-9V	500490	6886449	27/08/2006 12:46	1556.6	0.5	18.3	16	81	0	25.2	9.2
HR-04717	HR04717	NAD83-9V	500561	6886369	27/08/2006 12:51	1553.6	0.7	37.6	29.9	84	0	30.3	12
HR-04718	HR04718	NAD83-9V	500620	6886288	27/08/2006 12:57	1547.8	0.5	15.5	22.4	83	0	23.2	10.5
HR-04719	HR04719	NAD83-9V	500665	6886185	27/08/2006 13:03	1541.7	0.6	29	22.3	94	0	26.4	12
HR-04720	HR04720	NAD83-9V	500702	6886072	27/08/2006 13:16	1535	0.2	19.9	19.1	69	0	24	8.9
HR-04721	HR04721	NAD83-9V	500739	6885971	27/08/2006 13:24	1531.6	0.7	25.2	20.6	70	0	21.8	10.5
HR-04722	HR04722	NAD83-9V	500775	6885877	27/08/2006 13:31	1532.2	0.3	13.6	15	73	0	21.6	7.5
HR-04723	HR04723	NAD83-9V	500804	6885780	27/08/2006 13:40	1530.4	0.3	14.4	17.2	86	0	22.4	10.4
HR-04724	HR04724	NAD83-9V	500847	6885688	27/08/2006 13:49	1527.7	0.5	28.7	18.4	39	0.1	35.4	15.5
HR-04725	HR04725	NAD83-9V	500893	6885601	27/08/2006 13:56	1529.5	0.2	26.3	19.4	75	0	30.6	13.4
HR-04726	HR04726	NAD83-9V	500924	6885505	27/08/2006 14:31	1533.8	0.2	32.5	19.8	73	0	33.4	14.5
HR-04727	HR04727	NAD83-9V	500941	6885405	27/08/2006 14:38	1525.8	0.1	28.3	20.7	82	0	32.3	14.6
HR-04728	HR04728	NAD83-9V	500990	6885316	27/08/2006 14:44	1528	0.2	19.6	19.1	66	0	24.6	10.8
HR-04729	HR04729	NAD83-9V	501036	6885221	27/08/2006 14:51	1526.7	0.3	22	16.4	71	0	26.7	10.1
HR-04730	HR04730	NAD83-9V	501085	6885128	27/08/2006 14:58	1519.7	0.2	18.8	14.1	74	0	23.7	9.4
HR-04731	HR04731	NAD83-9V	501126	6885033	27/08/2006 15:03	1511.2	0.2	20	15.9	63	0	21.7	8.6
HR-04732	HR04732	NAD83-9V	501174	6884928	27/08/2006 15:11	1500.8	0.2	20.7	16.5	61	0	23.2	10.1
HR-04733	HR04733	NAD83-9V	501214	6884835	27/08/2006 15:17	1492.9	0.3	22.4	20.4	75	0	27.2	12.2
HR-04734	HR04734	NAD83-9V	501255	6884723	27/08/2006 15:24	1481.9	0.2	16.8	12.5	64	0	21.9	7.6
HR-04735	HR04735	NAD83-9V	501298	6884625	27/08/2006 15:31	1479.8	0.3	25.5	15.7	75	0	31.1	10.9
HR-04736	HR04736	NAD83-9V	501315	6884521	27/08/2006 15:37	1480.7	0.3	20.4	13.4	58	0	25.1	9.1
HR-04737	HR04737	NAD83-9V	501324	6884422	27/08/2006 15:46	1475.8	0.2	15.5	12.2	41	0	13.9	5.6
HR-04738	HR04738	NAD83-9V	501362	6884319	27/08/2006 16:01	1485	0.2	16.3	15	67	0	20.2	7.6
HR-04739	HR04739	NAD83-9V	501392	6884221	27/08/2006 16:08	1491.7	0.3	35.6	16.4	68	0	31	12.6
HR-04740	HR04740	NAD83-9V	501433	6884121	27/08/2006 16:15	1496.9	0.3	17	11.7	54	0	19	8.1
HR-04741	HR04741	NAD83-9V	501431	6884012	27/08/2006 16:24	1490.5	0.2	28.8	13.5	62	0	21.6	8.3
HR-04742	HR04742	NAD83-9V	501422	6883895	27/08/2006 16:32	1478.9	0.5	18.6	14.8	57	0	20.5	8.2
HR-04743	HR04743	NAD83-9V	501435	6883775	27/08/2006 16:46	1469.7	0.3	27.9	17.6	51	0	25.7	13
HR-04744	HR04744	NAD83-9V	501438	6883672	27/08/2006 16:58	1460	0.3	16.3	15.2	76	0	22.6	9.7
HR-04746	HR04746	NAD83-9V	530086	6857074	28/08/2006 11:25	1632.2	0.5	17.9	25.6	65	0	19.7	10.9
HR-04747	HR04747	NAD83-9V	530142	6857157	28/08/2006 11:39	1607.8	0.4	36.2	40	98	0.1	34	14.3
HR-04748	HR04748	NAD83-9V	530179	6857252	28/08/2006 11:59	1595.3	0.3	19.8	45	56	0	16.5	13.9
HR-04749	HR04749	NAD83-9V	530237	6857333	28/08/2006 12:08	1585.6	0.4	17.8	30.3	59	0	23.1	12.8
HR-04750	HR04750	NAD83-9V	530290	6857421	28/08/2006 12:14	1577.6	0.3	33.3	37.8	82	0	42.1	20.7
HR-05936	HR05936	NAD83-9V	504073	6873070	26/08/2006 10:20	1859.9	1.1	221.2	160	145	0.3	56.1	64.6
HR-05937	HR05937	NAD83-9V	503974	6873061	26/08/2006 10:34	1868.4	1.1	125.1	87.5	163	0	76.4	67.2
HR-05938	HR05938	NAD83-9V	503874	6873056	26/08/2006 11:01	1866.9	0.7	87.4	51.3	127	0	45.3	29.6
HR-05939	HR05939	NAD83-9V	503774	6873040	26/08/2006 11:09	1866	0.6	77.3	29.3	97	0	44.9	27.8
HR-05940	HR05940	NAD83-9V	503679	6873016	26/08/2006 11:29	1874.2	0.6	21.3	18.2	61	0	24.9	15.5
HR-05941	HR05941	NAD83-9V	503578	6873011	26/08/2006 11:38	1878.2	0.4	24.5	18.1	71	0	25.8	8.4
HR-05942	HR05942	NAD83-9V	503508	6872942	26/08/2006 11:48	1873.6	0.9	69.4	70.1	81	0	32.6	12.2
HR-05943	HR05943	NAD83-9V	503435	6872871	26/08/2006 11:59	1880.3	0.9	30.4	31.9	70	0	22.7	10
HR-05944	HR05944	NAD83-9V	503374	6872801	26/08/2006 12:11	1865.4	1.3	63.6	64.2	90	0	32.9	26.4
HR-05945	HR05945	NAD83-9V	503343	6872706	26/08/2006 12:19	1860.2	7.2	97.5	61.8	127	0.4	70.9	30
HR-05946	HR05946	NAD83-9V	503302	6872614	26/08/2006 12:26	1866.9	3	81.4	32.4	95	0.2	45.1	20.5
HR-05947	HR05947	NAD83-9V	503299	6872514	26/08/2006 12:35	1890.7	1.7	47.8	26.5	77	0.2	33.8	15.5
HR-05948	HR05948	NAD83-9V	503289	6872412	26/08/2006 12:43	1903.2	0.6	48.3	32.6	77	0	35.4	23.9
HR-05949	HR05949	NAD83-9V	503278	6872312	26/08/2006 12:59	1888.2	0.4	29.6	65.7	83	0	36.4	28.5
HR-05950	HR05950	NAD83-9V	503259	6872205	26/08/2006 13:07	1884.9	0.9	66.2	44.5	131	0	59.4	25.3
HR-05951	HR05951	NAD83-9V	502066	6883102	27/08/2006 13:38	1483.8	0.1	29.5	11.9	81	0	37.4	16.2
HR-05952	HR05952	NAD83-9V	502155	6883051	27/08/2006 13:47	1485	0.1	6.3	7.1	19	0	4.9	2.2
HR-05953	HR05953	NAD83-9V	502257	6883054	27/08/2006 13:56	1480.4	0.2	19.9	12.1	54	0	20.7	6.7
HR-05954	HR05954	NAD83-9V	502352	6883041	27/08/2006 14:09	1464.3	0.1	3.1	3.7	16	0	2.8	1.6

SAMPLES	Mn	Fe	As	U	Au	Th	Sr	Cd	Sb	Bi	V	Ca	P	La	Cr	Mg	Ba	Ti	B	Al
HR-04531	752	3.41	7.3	1.5	1.3	20.3	18	0	0.4	0.5	8	0.17	0.056	43	15	0.63	21	0.001	1	1.46
HR-04713	569	4.18	11.1	2	2.1	19.4	35	0.2	0.3	0.5	10	0.34	0.076	36	21	0.73	36	0.005	1	1.63
HR-04714	681	3.91	18.8	1.4	1	9.5	12	0.1	0.3	0.5	10	0.13	0.118	40	17	0.48	21	0.003	1	1.4
HR-04715	474	3.53	15.6	1.9	2.2	15.6	19	0.1	0.2	0.4	9	0.19	0.056	37	18	0.63	23	0.006	0	1.5
HR-04716	144	3.07	8.4	3.1	0.7	10.9	29	0	0.1	0.3	10	0.35	0.072	29	18	0.57	26	0.005	1	1.52
HR-04717	91	2.56	8.1	3.3	1.3	17.8	25	0	0.2	0.4	10	0.17	0.05	35	19	0.71	35	0.003	1	1.46
HR-04718	205	3	7.4	5.5	0.5	13.4	29	0	0.1	0.4	10	0.31	0.073	32	19	0.62	25	0.004	0	1.51
HR-04719	332	3.68	11.3	4.9	1.6	13.4	34	0	0.1	0.4	12	0.23	0.057	39	22	0.76	19	0.004	0	1.61
HR-04720	162	2.69	6.7	2.3	0.8	11.7	28	0	0.2	0.3	9	0.25	0.062	32	15	0.53	18	0.005	0	1.23
HR-04721	131	3.25	12	2.6	52.4	14.3	25	0	0.1	0.4	11	0.17	0.045	29	18	0.66	38	0.003	0	1.47
HR-04722	178	2.67	5.3	1.7	0.6	9.3	37	0	0.1	0.3	9	0.34	0.051	29	15	0.51	25	0.005	0	1.33
HR-04723	223	3.12	6	3.8	0	12.7	17	0	0.1	0.4	11	0.15	0.043	29	18	0.59	29	0.005	0	1.38
HR-04724	1162	4.08	10.6	5.5	0.5	15.4	56	0	0.2	0.4	22	0.61	0.129	16	23	0.99	42	0.084	0	1.76
HR-04725	487	3.35	7.8	1.2	1.3	8	12	0.1	0.2	0.4	13	0.08	0.051	28	18	0.64	40	0.018	1	1.7
HR-04726	650	3.39	6.7	1	2.4	10.8	18	0.1	0.2	0.4	15	0.15	0.044	28	19	0.69	43	0.032	1	1.51
HR-04727	460	3.45	9.4	1.3	0.9	9.9	12	0.1	0.2	0.4	15	0.09	0.047	24	21	0.67	37	0.036	1	1.93
HR-04728	302	3.38	8.5	1	8.4	10.4	8	0.1	0.1	0.4	12	0.04	0.038	24	19	0.71	32	0.012	0	1.7
HR-04729	323	3.17	8.6	0.8	1.1	11	7	0.1	0.2	0.3	11	0.06	0.049	21	19	0.63	34	0.005	1	1.66
HR-04730	252	3.27	8	0.7	0.5	11	8	0.1	0.2	0.3	10	0.06	0.038	25	19	0.68	30	0.005	0	1.57
HR-04731	261	2.6	3.9	1.1	1	7.5	23	0.1	0.1	0.3	7	0.26	0.05	26	13	0.5	21	0.005	1	1.12
HR-04732	267	2.77	6.5	1	1	7.7	9	0	0.1	0.3	13	0.07	0.035	23	18	0.62	38	0.017	1	1.49
HR-04733	426	3.25	6.6	1.1	0	11.7	9	0.1	0.2	0.4	9	0.08	0.067	33	16	0.62	20	0.004	0	1.26
HR-04734	233	2.78	9.1	2	1.9	8.5	11	0	0.1	0.3	10	0.1	0.052	25	16	0.57	36	0.009	0	1.46
HR-04735	233	3.1	10.9	1.7	0.5	5.7	8	0.1	0.1	0.4	13	0.04	0.044	27	19	0.59	31	0.016	1	1.69
HR-04736	265	2.46	15.5	1.2	1	7.3	9	0.1	0.1	0.3	10	0.08	0.047	23	15	0.49	26	0.013	0	1.2
HR-04737	171	1.88	10.5	0.9	3.2	3.2	11	0.1	0.1	0.2	7	0.12	0.049	20	8	0.34	44	0.007	1	1.04
HR-04738	238	2.45	6	0.9	0.9	5.3	12	0.1	0.1	0.3	9	0.15	0.057	20	12	0.41	46	0.006	1	1.27
HR-04739	297	3.36	6.6	2.6	2.3	16.7	16	0.1	0.2	0.5	9	0.14	0.05	34	17	0.7	16	0.007	0	1.47
HR-04740	264	2.65	7	1.4	0.6	3.2	7	0.1	0.2	0.3	11	0.02	0.076	20	16	0.51	20	0.005	0	1.34
HR-04741	233	2.94	11.7	2.1	3.8	8	7	0	0.1	0.4	9	0.04	0.04	27	16	0.58	21	0.007	0	1.44
HR-04742	282	2.65	34.4	3	3.6	4.6	8	0	0.1	0.3	12	0.05	0.067	25	16	0.48	41	0.01	1	1.45
HR-04743	339	2.61	52.6	2.5	7.7	7.3	12	0	0.2	0.3	9	0.05	0.047	31	12	0.42	37	0.007	0	1.19
HR-04744	627	2.93	10	1.1	1	2.3	26	0.1	0.1	0.3	18	0.14	0.071	19	21	0.54	45	0.017	1	1.7
HR-04746	521	2.5	7.1	1.6	1.3	2.1	6	0.1	0.4	0.3	16	0.04	0.077	17	14	0.31	34	0.006	1	1.3
HR-04747	528	3.59	9.3	5.2	1	8.1	17	0.1	0.5	0.5	14	0.2	0.077	29	20	0.51	63	0.002	1	1.88
HR-04748	832	2.61	1.8	0.8	0	3.4	5	0	0.2	0.4	12	0.03	0.074	23	14	0.43	21	0.007	0	1.34
HR-04749	423	3.46	6.5	3.8	1.1	10.8	33	0	0.3	0.5	11	0.23	0.034	33	19	0.55	74	0.001	1	1.8
HR-04750	683	4.44	8.4	1.7	1.4	13.4	23	0	0.4	0.6	12	0.35	0.072	41	21	0.64	45	0.002	0	1.93
HR-05936	1412	4.71	37.4	7.3	0.9	26.2	5	0.1	1.1	1	19	0.1	0.089	28	34	0.98	26	0.007	1	2.35
HR-05937	1282	5.68	42.7	6	1.3	17	6	0.1	1.4	1.2	17	0.05	0.086	36	34	0.98	23	0.003	0	2.31
HR-05938	5227	5.3	26.4	5.3	1.6	12	17	0.3	0.4	0.7	19	0.9	0.461	59	25	1.07	42	0.011	1	2.57
HR-05939	1279	4.41	29.2	2.3	2	17.6	10	0	0.6	0.5	18	0.09	0.068	50	28	1.34	23	0.004	4	2.45
HR-05940	1214	2.93	10.6	1.3	0	5.6	6	0	0.3	0.3	15	0.04	0.072	30	18	0.58	18	0.007	0	1.45
HR-05941	496	3.42	15.7	1.1	8.7	8.2	4	0	0.3	0.3	16	0.02	0.044	39	27	0.81	20	0.004	0	1.89
HR-05942	259	3.23	10	2.2	1.2	10.8	9	0	0.4	0.7	17	0.05	0.052	41	24	0.81	19	0.013	0	1.65
HR-05943	344	2.82	20.3	1.6	3.3	6.4	7	0.1	0.5	0.4	22	0.06	0.073	20	19	0.56	21	0.017	0	1.33
HR-05944	983	3.63	29.8	2.6	1.2	3.7	7	0.2	0.6	0.6	23	0.04	0.089	17	22	0.61	35	0.013	1	1.56
HR-05945	558	4.7	103.4	3.7	3.5	10.1	30	0.9	1.4	0.9	9	1.11	0.061	17	8	0.97	14	0.002	1	0.61
HR-05946	461	3.46	49.1	2.4	2.4	8	19	0.4	1	0.5	11	0.55	0.067	14	10	0.78	12	0.005	1	0.7
HR-05947	583	3.02	37.4	0.9	0.9	9.4	11	0.4	0.8	0.4	8	0.11	0.047	32	14	0.66	14	0.001	1	1.16
HR-05948	1081	3.12	27.2	0.5	0	9.6	31	0.2	0.4	0.4	9	4.08	0.044	22	15	0.7	29	0.007	1	1.34
HR-05949	1124	3.28	9.6	0.5	0.7	8.5	6	0	0.2	0.6	12	0.03	0.052	31	22	0.91	23	0.002	0	1.85
HR-05950	383	3.4	27.1	5	0.9	6.1	16	0	0.5	0.5	21	0.09	0.09	16	23	0.61	29	0.015	0	1.57
HR-05951	350	3.92	4.5	1.6	0	14.5	391	0	0.1	0.3	75	2.4	0.031	15	72	1.31	60	0.12	1	5.39
HR-05952	82	0.71	5.5	0.8	0	1	923	0.1	0.2	0.1	1	28.12	0.042	5	1	0.21	7	0.002	1	0.14
HR-05953	391	2.02	32.6	1.4	0.8	4.7	531	0.1	0.1	0.2	13	17.03	0.073	18	13	0.51	30	0.017	1	1.02
HR-05954	179	0.52	1.7	1.2	0	0.8	811	0	0.1	0.1	2	29.03	0.049	7	2	0.28	8	0.003	1	0.24

SAMPLES	Na	K	W	Hg	Sc	Tl	S	Ga	Se	Analysis:	Acme file #
HR-04531	0.004	0.05	0	0.01	1.7	0	0	4	0	GROUP 1DX - 15.0 GM	A607420
HR-04713	0.005	0.07	0.1	0	2.4	0	0	4	0	GROUP 1DX - 15.0 GM	A607420
HR-04714	0.003	0.03	0	0.01	1.3	0	0	3	0.5	GROUP 1DX - 15.0 GM	A607420
HR-04715	0.003	0.04	0.1	0.01	1.7	0	0	4	0	GROUP 1DX - 15.0 GM	A607420
HR-04716	0.007	0.03	0.1	0.01	1.3	0	0	4	0	GROUP 1DX - 15.0 GM	A607420
HR-04717	0.004	0.04	0.1	0.01	1.6	0.1	0.06	4	0	GROUP 1DX - 15.0 GM	A607420
HR-04718	0.007	0.04	0.1	0.01	1.6	0	0	4	0	GROUP 1DX - 15.0 GM	A607420
HR-04719	0.003	0.03	0.1	0.01	1.6	0	0	5	0	GROUP 1DX - 15.0 GM	A607420
HR-04720	0.004	0.04	0.1	0.01	1.1	0	0	4	0	GROUP 1DX - 15.0 GM	A607420
HR-04721	0.004	0.04	0.1	0.01	1.2	0	0	4	0	GROUP 1DX - 15.0 GM	A607420
HR-04722	0.006	0.05	0.1	0.01	1.1	0	0	3	0	GROUP 1DX - 15.0 GM	A607420
HR-04723	0.004	0.04	0.1	0.01	1.2	0	0	4	0	GROUP 1DX - 15.0 GM	A607420
HR-04724	0.011	0.15	0.1	0.01	2.6	0.3	0	6	0	GROUP 1DX - 15.0 GM	A607420
HR-04725	0.004	0.07	0.1	0.01	1.3	0.1	0	5	0	GROUP 1DX - 15.0 GM	A607420
HR-04726	0.009	0.13	0.1	0.01	1.7	0.2	0	5	0	GROUP 1DX - 15.0 GM	A607420
HR-04727	0.006	0.12	0.1	0.01	1.6	0.2	0	5	0	GROUP 1DX - 15.0 GM	A607420
HR-04728	0.003	0.07	0.2	0.01	1.1	0.1	0	4	0	GROUP 1DX - 15.0 GM	A607420
HR-04729	0.003	0.06	0.1	0.01	1.1	0.1	0	4	0	GROUP 1DX - 15.0 GM	A607420
HR-04730	0.003	0.05	0	0.01	1.2	0.1	0	4	0	GROUP 1DX - 15.0 GM	A607420
HR-04731	0.011	0.02	0	0.01	1.1	0	0	3	0	GROUP 1DX - 15.0 GM	A607420
HR-04732	0.004	0.08	0.1	0.01	1.1	0.1	0	4	0.5	GROUP 1DX - 15.0 GM	A607420
HR-04733	0.004	0.03	0	0.01	1	0	0	3	0	GROUP 1DX - 15.0 GM	A607420
HR-04734	0.003	0.07	0.1	0.01	1.2	0.1	0	4	0	GROUP 1DX - 15.0 GM	A607420
HR-04735	0.003	0.08	0.1	0.01	1	0.1	0	4	0	GROUP 1DX - 15.0 GM	A607420
HR-04736	0.004	0.07	0.1	0.01	0.9	0.1	0	3	0	GROUP 1DX - 15.0 GM	A607420
HR-04737	0.016	0.03	0	0.01	0.7	0	0	2	0	GROUP 1DX - 15.0 GM	A607420
HR-04738	0.007	0.04	0.1	0	0.9	0	0	3	0	GROUP 1DX - 15.0 GM	A607420
HR-04739	0.003	0.03	0	0	1.1	0	0	4	0	GROUP 1DX - 15.0 GM	A607420
HR-04740	0.005	0.04	0.1	0.01	0.5	0.1	0	4	0	GROUP 1DX - 15.0 GM	A607420
HR-04741	0.003	0.04	0.1	0	1	0.1	0	4	0	GROUP 1DX - 15.0 GM	A607420
HR-04742	0.005	0.08	0.1	0.01	0.9	0.1	0	4	0	GROUP 1DX - 15.0 GM	A607420
HR-04743	0.005	0.06	0.1	0	0.7	0.1	0	3	0	GROUP 1DX - 15.0 GM	A607420
HR-04744	0.007	0.1	0.1	0.01	1	0.1	0	5	0	GROUP 1DX - 15.0 GM	A607420
HR-04746	0.011	0.06	0.1	0.02	0.9	0.1	0	4	0	GROUP 1DX - 15.0 GM	A607420
HR-04747	0.007	0.06	0.1	0.02	1.8	0.1	0	5	0	GROUP 1DX - 15.0 GM	A607420
HR-04748	0.011	0.03	0.1	0.01	0.7	0	0	5	0	GROUP 1DX - 15.0 GM	A607420
HR-04749	0.005	0.06	0	0.01	1.2	0.1	0	5	0	GROUP 1DX - 15.0 GM	A607420
HR-04750	0.005	0.05	0	0.01	1.9	0.1	0	5	0	GROUP 1DX - 15.0 GM	A607420
HR-05936	0.011	0.05	0.1	0.01	3.8	0.1	0	7	0	GROUP 1DX - 15.0 GM	A607420
HR-05937	0.006	0.02	0	0.01	2.4	0	0	6	0	GROUP 1DX - 15.0 GM	A607420
HR-05938	0.012	0.03	0.1	0.02	5	0	0	8	0	GROUP 1DX - 15.0 GM	A607420
HR-05939	0.005	0.07	0	0	2.9	0	0	6	0	GROUP 1DX - 15.0 GM	A607420
HR-05940	0.007	0.02	0.1	0.01	1	0	0	5	0	GROUP 1DX - 15.0 GM	A607420
HR-05941	0.005	0.03	0	0.02	1.2	0	0	6	0	GROUP 1DX - 15.0 GM	A607420
HR-05942	0.008	0.04	0.1	0.01	1.5	0	0	5	0	GROUP 1DX - 15.0 GM	A607420
HR-05943	0.006	0.03	0.1	0.02	1.2	0.1	0	5	0	GROUP 1DX - 15.0 GM	A607420
HR-05944	0.005	0.04	0.1	0.02	1.4	0.1	0	5	0	GROUP 1DX - 15.0 GM	A607420
HR-05945	0.003	0.02	0	0.03	2.3	0.1	0	1	0	GROUP 1DX - 15.0 GM	A607420
HR-05946	0.003	0.02	0	0.03	2	0.1	0	1	0	GROUP 1DX - 15.0 GM	A607420
HR-05947	0.002	0.03	0	0.02	1.6	0	0	2	0	GROUP 1DX - 15.0 GM	A607420
HR-05948	0.004	0.1	0	0.01	2.8	0	0	3	0	GROUP 1DX - 15.0 GM	A607420
HR-05949	0.002	0.02	0	0.01	1.1	0	0	5	0	GROUP 1DX - 15.0 GM	A607420
HR-05950	0.006	0.04	0.1	0.01	1.4	0	0	5	0.6	GROUP 1DX - 15.0 GM	A607420
HR-05951	0.339	0.11	0	0.01	5.5	0.4	0	15	0	GROUP 1DX - 15.0 GM	A607420
HR-05952	0.003	0.01	0	0.01	0.7	0	0.06	0	0	GROUP 1DX - 15.0 GM	A607420
HR-05953	0.016	0.08	0.2	0.01	2.1	0.1	0	2	0	GROUP 1DX - 15.0 GM	A607420
HR-05954	0.003	0.01	0	0.01	0.7	0	0	0	0	GROUP 1DX - 15.0 GM	A607420

SAMPLES	GPS ID	Datum	Easting	Northing	Date Time	Elevation	Mo	Cu	Pb	Zn	Ag	Ni	Co
HR-05955	HR05955	NAD83-9V	502441	6883004	27/08/2006 14:19	1448.7	0.4	40.8	23.2	104	0.1	35	14.4
HR-05956	HR05956	NAD83-9V	502618	6882909	27/08/2006 14:42	1404.8	0.2	29	17.6	67	0	29.7	12.3
HR-05957	HR05957	NAD83-9V	502723	6882896	27/08/2006 14:54	1389.9	0.4	19.2	34.6	67	0	27.4	14.5
HR-05958	HR05958	NAD83-9V	502823	6882909	27/08/2006 15:14	1374.3	0.2	28.2	15.8	71	0	32.2	11.6
HR-05959	HR05959	NAD83-9V	502924	6882911	27/08/2006 15:26	1368.9	0.2	40.4	17.5	75	0.1	35.5	11.8
HR-05960	HR05960	NAD83-9V	503025	6882919	27/08/2006 15:40	1361.2	0.5	28.9	18.4	79	0	42	12.3
HR-05961	HR05961	NAD83-9V	503119	6882882	27/08/2006 15:52	1346.3	0.3	50.3	23.4	80	0	48.5	14.3
HR-05962	HR05962	NAD83-9V	503213	6882855	27/08/2006 16:03	1338.1	0.2	26.8	19	76	0	37.2	13.8
HR-05963	HR05963	NAD83-9V	503314	6882896	27/08/2006 16:17	1334.1	0.3	39.7	18.4	74	0	40.7	13.3
HR-05964	HR05964	NAD83-9V	503402	6882943	27/08/2006 16:30	1336.9	0.2	46.4	30	85	0.2	48.1	13
HR-05965	HR05965	NAD83-9V	503507	6882952	27/08/2006 16:43	1326.2	0.2	45.3	18.9	83	0.1	51.5	13.2
HR-05966	HR05966	NAD83-9V	503574	6883023	27/08/2006 16:59	1333.8	0.3	47.4	18.6	72	0	59.3	14.6
HR-05967	HR05967	NAD83-9V	503668	6883054	27/08/2006 17:13	1335.9	0.3	43.2	18.6	99	0	55.7	22.5
HR-05968	HR05968	NAD83-9V	503850	6883116	27/08/2006 17:40	1331.7	0.2	39.2	18.4	80	0.1	42.4	13
HR-05969	HR05969	NAD83-9V	503928	6883169	27/08/2006 17:50	1336.9	0.2	27.7	13.9	73	0	42.8	10.9
HR-05970	HR05970	NAD83-9V	498438	6869652	28/08/2006 10:18	1944.9	1.2	72.3	71.3	179	0.1	50.8	55.5
HR-05971	HR05971	NAD83-9V	498469	6869554	28/08/2006 10:23	1936.1	0.8	62.8	64.1	122	0	44.9	46.9
HR-05972	HR05972	NAD83-9V	498506	6869462	28/08/2006 10:45	1898.9	0.5	69.4	77.7	115	0	47.3	51
HR-05973	HR05973	NAD83-9V	498599	6869458	28/08/2006 10:55	1882.1	0.7	85	74.8	132	0	65.7	77.7
HR-05974	HR05974	NAD83-9V	498709	6869446	28/08/2006 11:13	1870.3	1	74.9	87	140	0	60.3	60.4
HR-05975	HR05975	NAD83-9V	498822	6869445	28/08/2006 11:18	1861.4	1.2	68.7	85.1	128	0	68.4	63.5
HR-05976	HR05976	NAD83-9V	498894	6869378	28/08/2006 11:27	1845.3	0.9	57.7	62.8	113	0	48.5	35.6
HR-05977	HR05977	NAD83-9V	498967	6869316	28/08/2006 11:36	1827	0.8	50.4	54.9	89	0	40.3	36
HR-05978	HR05978	NAD83-9V	499050	6869295	28/08/2006 11:54	1819	0.8	51.8	48.3	102	0	44.9	28.5
HR-05979	HR05979	NAD83-9V	499117	6869215	28/08/2006 11:59	1793.7	0.7	42.5	44.5	110	0	39.7	25.6
HR-05980	HR05980	NAD83-9V	499210	6869182	28/08/2006 12:07	1781.3	0.4	35.3	26.8	85	0	36.2	19.1
HR-05981	HR05981	NAD83-9V	499297	6869137	28/08/2006 12:24	1778.2	0.6	38.9	31	95	0	33.7	19.9
HR-05982	HR05982	NAD83-9V	499380	6869075	28/08/2006 12:32	1766.9	0.4	49.1	29.4	98	0	39.4	19.9
HR-05983	HR05983	NAD83-9V	499468	6869027	28/08/2006 12:40	1753.8	0.4	32.5	22.5	78	0	28.6	14.6
HR-05984	HR05984	NAD83-9V	499520	6868942	28/08/2006 12:53	1716.3	0.7	27.1	18	65	0	20.7	11.4
HR-05985	HR05985	NAD83-9V	499631	6868915	28/08/2006 13:06	1688.6	1	50.6	42.9	96	0	28.5	19.3
HR-05986	HR05986	NAD83-9V	499719	6868858	28/08/2006 13:18	1699	1.4	49.9	37.3	91	0	33.7	21.6
HR-05987	HR05987	NAD83-9V	499807	6868805	28/08/2006 13:28	1663	0.6	35.6	23.7	81	0	30	13.8
HR-05988	HR05988	NAD83-9V	500027	6868734	28/08/2006 13:54	1657.8	0.5	32.8	34.7	118	0	36.6	21.5
HR-05989	HR05989	NAD83-9V	500140	6868724	28/08/2006 14:02	1670.6	0.9	52.3	52	100	0	42.7	30.8
HR-05990	HR05990	NAD83-9V	500230	6868686	28/08/2006 14:13	1664.5	0.6	46.9	55.6	103	0	38.9	30.7
HR-05991	HR05991	NAD83-9V	500312	6868631	28/08/2006 14:24	1652	0.8	31	43.3	66	0	23.4	23.4
HR-05992	HR05992	NAD83-9V	500388	6868562	28/08/2006 14:34	1644.7	1	51.1	51.9	103	0	46.9	31.1
HR-05993	HR05993	NAD83-9V	500459	6868486	28/08/2006 14:45	1634.9	0.9	46.6	56.3	100	0	39.8	36.9
HR-05994	HR05994	NAD83-9V	500550	6868339	28/08/2006 15:17	1606.9	0.4	87.6	68.4	149	0	59.9	45.9
HR-05995	HR05995	NAD83-9V	500587	6868243	28/08/2006 15:24	1598.7	1.3	59	80.2	108	0	37.7	43
HR-05996	HR05996	NAD83-9V	500696	6868170	28/08/2006 15:46	1583.1	1.1	52.2	77.8	116	0.1	34.1	38.4
HR-05997	HR05997	NAD83-9V	500760	6868092	28/08/2006 15:54	1549.3	0.5	9.7	25.2	18	0	4.5	7.5
HR-05998	HR05998	NAD83-9V	500803	6868004	28/08/2006 16:21	1507.8	0.4	17.7	14.2	46	0.1	12.7	8.5
HR-06320	HR06320	NAD83-9V	498043	6871578	26/08/2006 11:34	1691.6	0.5	32.9	40	121	0	42.1	18
HR-06323	HR06323	NAD83-9V	497801	6871772	26/08/2006 11:58	1707.8	0.4	20.1	30.9	117	0	32.2	12.6
HR-06325	HR06325	NAD83-9V	497636	6871930	26/08/2006 12:15	1696.8	0.8	32.9	45.9	107	0	37.9	21.4
HR-06328	HR06328	NAD83-9V	497420	6872174	26/08/2006 12:43	1697.4	1.1	120.1	104.8	233	0.4	111.1	49
HR-06329	HR06329	NAD83-9V	497405	6872275	26/08/2006 12:55	1700.5	0.5	55	39.3	140	0.2	54.8	22
HR-06330	HR06330	NAD83-9V	497367	6872367	26/08/2006 13:03	1696.8	0.5	45.7	51.7	137	0.1	61.2	24.6
HR-06333	HR06333	NAD83-9V	497191	6872599	26/08/2006 13:31	1664.5	0.2	37.6	35.2	90	0	43.7	17
HR-06334	HR06334	NAD83-9V	497109	6872668	26/08/2006 13:42	1644.4	0.5	23	32.2	87	0	25.1	10.2
HR-06336	HR06336	NAD83-9V	496969	6872821	26/08/2006 14:07	1650.8	0.4	26.8	31.6	64	0	24.3	11.2
HR-06337	HR06337	NAD83-9V	496887	6872878	26/08/2006 14:18	1664.8	0.4	35.6	32.7	76	0	32.3	15.2
HR-06338	HR06338	NAD83-9V	496800	6872932	26/08/2006 14:32	1644.7	0.5	43.3	46.4	93	0	40.8	26.6
HR-06339	HR06339	NAD83-9V	496709	6873035	26/08/2006 14:45	1653.2	1.7	31.9	64.5	68	0.1	22.5	20.7
HR-06341	HR06341	NAD83-9V	496582	6873286	26/08/2006 15:17	1812.3	0.2	13.5	8.3	29	0	8.8	3.5

SAMPLES	Mn	Fe	As	U	Au	Th	Sr	Cd	Sb	Bi	V	Ca	P	La	Cr	Mg	Ba	Ti	B	Al
HR-05955	590	3.41	51.8	10.2	3.2	3.4	122	0.1	0.3	0.4	25	1.11	0.108	27	26	0.7	42	0.028	1	2.25
HR-05956	451	3.06	17.4	1.5	0.7	9.4	86	0	0.2	0.3	22	0.62	0.035	21	24	0.66	46	0.036	0	1.96
HR-05957	458	3.92	22.5	7	0.5	5.4	342	0.3	0.4	0.4	15	1.92	0.278	25	17	0.3	35	0.026	13	2.71
HR-05958	423	3.18	13.1	1.3	0.9	9.7	81	0.1	0.2	0.3	21	0.5	0.042	22	25	0.7	41	0.038	0	1.87
HR-05959	308	2.95	11	2.6	0.9	6.1	133	0	0.2	0.3	15	1.17	0.054	40	18	0.52	53	0.029	1	1.74
HR-05960	377	2.88	11.2	5	2.2	7	58	0.1	0.2	0.3	16	0.39	0.059	27	20	0.63	37	0.03	0	1.55
HR-05961	567	3.72	13.8	2.5	1.3	13.6	78	0.1	0.2	0.4	19	0.48	0.049	25	23	0.86	46	0.054	1	1.97
HR-05962	537	3.03	11.5	1.1	0.5	5.4	208	0.1	0.2	0.3	20	3.13	0.054	18	21	0.57	40	0.04	1	1.76
HR-05963	392	3.14	16.2	1.3	2	9.6	140	0.1	0.2	0.3	19	1.47	0.066	24	23	0.65	43	0.039	0	1.76
HR-05964	391	3.38	29	5.6	4.4	8.5	72	0.1	0.2	0.6	18	0.57	0.06	46	22	0.66	56	0.028	1	1.93
HR-05965	383	3.19	45.1	2.9	1.4	6.7	102	0.1	0.2	0.3	20	0.77	0.063	26	23	0.64	54	0.037	2	2.05
HR-05966	352	3.29	108.8	3.2	6.3	11.6	70	0.1	0.2	0.3	19	0.41	0.049	35	25	0.68	50	0.036	1	1.86
HR-05967	483	3.31	120.4	2.9	3.5	13.4	43	0.1	0.2	0.4	17	0.21	0.068	35	22	0.73	42	0.032	0	1.8
HR-05968	316	3.42	30.5	1.7	2.6	10.6	93	0.1	0.2	0.4	21	0.71	0.054	91	25	0.71	55	0.036	0	2.02
HR-05969	248	2.79	24.6	2.2	3	10.3	41	0	0.1	0.3	15	0.28	0.048	81	21	0.66	48	0.027	0	1.58
HR-05970	1392	5.02	15.6	3.1	1.6	9.1	11	0.1	0.7	0.8	27	0.06	0.131	38	29	0.81	39	0.016	0	2.37
HR-05971	1100	5	14.4	1.4	1	10.8	6	0.1	0.6	0.8	15	0.04	0.105	41	25	0.71	20	0.006	0	1.92
HR-05972	2135	4.05	9.9	1.3	1.2	16.4	18	0.1	0.3	0.6	12	0.13	0.067	41	23	0.72	24	0.002	1	1.92
HR-05973	1864	4.12	15	2.6	0.7	12.9	11	0.1	0.6	0.7	10	0.03	0.104	30	17	0.54	30	0.005	0	1.72
HR-05974	1872	4.6	18.6	2.5	0.5	12.3	10	0.1	0.7	0.9	12	0.07	0.074	37	20	0.7	33	0.004	0	1.84
HR-05975	2115	4.45	21.1	2.5	1.7	14.2	14	0.1	1	0.7	11	0.08	0.078	34	19	0.63	41	0.003	0	1.69
HR-05976	1554	4.61	12.8	2.1	2.2	14.6	12	0.1	0.4	0.8	15	0.09	0.062	43	26	0.86	32	0.005	0	1.96
HR-05977	1423	3.2	8	1.8	2.1	7.4	8	0	0.4	0.4	10	0.06	0.079	29	14	0.4	25	0.006	0	1.24
HR-05978	1264	3.92	10.1	1.8	1.3	12.2	9	0	0.5	0.5	16	0.06	0.054	42	24	0.77	32	0.006	0	1.62
HR-05979	1350	4.27	7.7	1.8	1.3	14.1	6	0.1	0.2	0.5	16	0.03	0.072	50	25	0.82	26	0.005	1	1.94
HR-05980	722	4.02	6.2	1.1	2.3	15.7	20	0	0.2	0.4	17	0.13	0.058	56	22	0.79	26	0.015	2	1.63
HR-05981	889	4.2	5.9	1.2	0.6	13.6	8	0	0.3	0.4	17	0.05	0.06	59	24	0.78	31	0.008	1	1.66
HR-05982	1254	4.2	8	2.9	1	14.3	10	0.1	0.2	0.4	23	0.05	0.044	52	28	0.92	47	0.016	2	2.01
HR-05983	712	3.41	6.4	3	2.6	11	14	0.1	0.2	0.4	16	0.07	0.043	41	21	0.71	20	0.009	1	1.45
HR-05984	835	2.8	4.2	1	1.1	2.6	10	0.1	0.2	0.3	18	0.14	0.067	23	17	0.56	42	0.01	0	1.65
HR-05985	1727	3.3	22	2.9	1.9	4.5	15	0.1	0.3	0.5	21	0.05	0.098	30	19	0.59	35	0.01	1	1.64
HR-05986	1557	3.6	24	9.5	0.7	11.3	18	0.1	0.4	0.4	17	0.09	0.058	40	20	0.68	30	0.01	0	1.49
HR-05987	412	3.19	14.5	3.8	2	11.7	16	0	0.2	0.3	12	0.09	0.043	38	18	0.63	21	0.006	1	1.45
HR-05988	1434	4.32	11.8	1.7	1.9	9.1	8	0.1	0.3	0.5	17	0.03	0.063	40	22	0.69	41	0.006	1	2.07
HR-05989	1103	3.96	14.7	1.7	1.3	13.7	14	0.1	0.8	0.6	15	0.07	0.064	56	21	0.64	42	0.006	1	1.64
HR-05990	1059	3.9	14.8	1.8	1.8	11.4	12	0.1	0.6	0.7	15	0.05	0.06	53	21	0.64	36	0.006	1	1.79
HR-05991	1647	2.62	6.9	1.1	1	1.8	10	0.1	0.3	0.4	13	0.12	0.086	24	16	0.39	35	0.006	1	1.21
HR-05992	1599	4.15	11.6	1.5	1.3	7.9	19	0.1	0.7	0.6	13	0.19	0.066	41	22	0.65	22	0.004	1	1.56
HR-05993	1307	4.12	14.8	1.9	1	9.4	17	0.1	0.9	0.6	13	0.04	0.062	50	18	0.52	26	0.003	1	1.5
HR-05994	1366	4.59	11.2	1	4.2	15.8	14	0.1	0.3	0.9	15	0.19	0.046	45	25	0.79	42	0.005	0	2.03
HR-05995	1924	3.51	11.6	2.1	1.2	6.8	12	0.1	0.5	0.7	16	0.04	0.086	42	22	0.57	36	0.01	4	1.61
HR-05996	2108	3.94	14.5	2.1	2	8.8	11	0.1	0.5	0.6	17	0.06	0.124	50	21	0.59	34	0.013	2	1.77
HR-05997	556	1.16	2.4	0.6	0.8	0.2	6	0	0.1	0.2	12	0.02	0.057	10	5	0.08	19	0.005	1	0.51
HR-05998	548	2.39	10.4	0.6	1.4	1.7	6	0	0.3	0.3	15	0.02	0.069	23	13	0.27	38	0.005	1	1.06
HR-06320	899	4.44	26.7	5	0.6	7.1	11	0.1	0.5	0.6	17	0.07	0.083	35	21	0.61	40	0.008	1	1.85
HR-06323	1562	3.46	15.7	1	1.1	5.7	9	0.1	0.3	0.4	11	0.06	0.119	25	16	0.34	33	0.004	0	1.47
HR-06325	1040	4.68	28.7	2.2	1.1	7.2	14	0.1	0.6	0.7	12	0.09	0.172	26	18	0.52	34	0.006	1	1.67
HR-06328	1408	9.06	40.9	3.5	2.6	12.7	62	0.3	1.4	1.5	11	0.8	0.143	25	18	0.66	32	0.002	2	1.35
HR-06329	771	4.86	52.6	2.1	1.8	11.4	43	0.1	0.6	0.6	12	0.38	0.089	34	20	0.67	26	0.005	0	1.57
HR-06330	1210	5.19	12.6	4.3	1	11.4	26	0.2	0.4	0.8	10	0.24	0.107	46	19	0.56	35	0.006	0	1.54
HR-06333	434	3.86	9.3	0.9	0.5	13.9	16	0	0.2	0.5	11	0.11	0.046	41	21	0.68	40	0.002	2	1.9
HR-06334	404	3.11	17.2	1.6	1	8	18	0.1	0.4	0.5	11	0.21	0.083	29	12	0.29	52	0.003	1	1.08
HR-06336	307	2.99	69	0.9	0	7.8	5	0.1	0.4	0.4	10	0.03	0.048	30	16	0.43	32	0.003	1	1.32
HR-06337	467	2.96	120.4	9.9	0.7	12.1	20	0.1	0.5	0.4	9	0.18	0.037	37	15	0.44	36	0.005	0	1.16
HR-06338	650	3.49	274.2	1.8	5	7.9	13	0.2	0.8	0.5	12	0.14	0.066	18	19	0.58	31	0.003	0	1.5
HR-06339	854	3.3	105.5	12.6	0.7	2.1	22	0.3	0.6	0.6	17	0.22	0.197	14	17	0.29	36	0.006	2	1.44
HR-06341	102	1.31	14.3	1.3	0	0.9	39	0.1	0.5	0.2	6	1.08	0.084	11	4	0.12	32	0.011	1	0.92

SAMPLES	Na	K	W	Hg	Sc	Tl	S	Ga	Se	Analysis:	Acme file #
HR-05955	0.036	0.07	0.2	0.03	1.8	0.1	0.11	5	0.5	GROUP 1DX - 15.0 GM	A607420
HR-05956	0.04	0.09	0.2	0.01	2.6	0.2	0	5	0	GROUP 1DX - 15.0 GM	A607420
HR-05957	0.069	0.04	0.1	0.03	2.8	0.1	0.07	5	0	GROUP 1DX - 15.0 GM	A607420
HR-05958	0.036	0.1	0.2	0.01	2.5	0.1	0	5	0	GROUP 1DX - 15.0 GM	A607420
HR-05959	0.04	0.09	0.2	0.02	2.3	0.1	0.06	4	0.9	GROUP 1DX - 15.0 GM	A607420
HR-05960	0.017	0.1	0.2	0.01	1.5	0.1	0	4	0	GROUP 1DX - 15.0 GM	A607420
HR-05961	0.044	0.12	0.1	0.01	2.6	0.2	0	5	0	GROUP 1DX - 15.0 GM	A607420
HR-05962	0.046	0.08	0.2	0.03	2.4	0.1	0.07	4	0	GROUP 1DX - 15.0 GM	A607420
HR-05963	0.046	0.11	0.2	0.01	2.5	0.2	0	4	0	GROUP 1DX - 15.0 GM	A607420
HR-05964	0.025	0.11	0.1	0.03	2.2	0.2	0	4	0	GROUP 1DX - 15.0 GM	A607420
HR-05965	0.044	0.1	0.1	0.02	2.5	0.2	0	5	0	GROUP 1DX - 15.0 GM	A607420
HR-05966	0.026	0.11	0.1	0.01	2.2	0.2	0	5	0	GROUP 1DX - 15.0 GM	A607420
HR-05967	0.008	0.1	0.2	0.01	1.7	0.2	0	4	0	GROUP 1DX - 15.0 GM	A607420
HR-05968	0.035	0.11	0.2	0.01	2.4	0.1	0	5	0	GROUP 1DX - 15.0 GM	A607420
HR-05969	0.013	0.07	0.1	0.01	1.5	0.1	0	4	0	GROUP 1DX - 15.0 GM	A607420
HR-05970	0.006	0.07	0.1	0.02	2.4	0.1	0	6	0	GROUP 1DX - 15.0 GM	A607420
HR-05971	0.003	0.03	0	0.01	1.6	0	0	5	0	GROUP 1DX - 15.0 GM	A607420
HR-05972	0.005	0.04	0	0	2.3	0	0	5	0	GROUP 1DX - 15.0 GM	A607420
HR-05973	0.007	0.03	0	0	1.7	0.1	0	4	0	GROUP 1DX - 15.0 GM	A607420
HR-05974	0.004	0.03	0	0.02	2	0.1	0	4	0	GROUP 1DX - 15.0 GM	A607420
HR-05975	0.005	0.02	0	0.02	2	0.1	0	5	0	GROUP 1DX - 15.0 GM	A607420
HR-05976	0.006	0.05	0.1	0.01	2.6	0.1	0	5	0	GROUP 1DX - 15.0 GM	A607420
HR-05977	0.009	0.03	0.1	0.03	1.2	0	0	3	0	GROUP 1DX - 15.0 GM	A607420
HR-05978	0.005	0.03	0	0.01	1.6	0	0	5	0	GROUP 1DX - 15.0 GM	A607420
HR-05979	0.007	0.04	0	0.01	1.8	0	0	5	0	GROUP 1DX - 15.0 GM	A607420
HR-05980	0.006	0.09	0.1	0	2.1	0	0	5	0	GROUP 1DX - 15.0 GM	A607420
HR-05981	0.003	0.04	0	0.02	1.4	0	0	4	0	GROUP 1DX - 15.0 GM	A607420
HR-05982	0.015	0.1	0.1	0.01	3.1	0.1	0	6	0	GROUP 1DX - 15.0 GM	A607420
HR-05983	0.005	0.03	0	0.01	1.3	0	0	4	0	GROUP 1DX - 15.0 GM	A607420
HR-05984	0.011	0.05	0.1	0.02	1.1	0	0	4	0.5	GROUP 1DX - 15.0 GM	A607420
HR-05985	0.009	0.06	0	0.01	1.3	0.1	0	5	0	GROUP 1DX - 15.0 GM	A607420
HR-05986	0.006	0.04	0	0.02	1.8	0	0	5	0.5	GROUP 1DX - 15.0 GM	A607420
HR-05987	0.005	0.05	0	0.01	1.2	0	0	4	0.6	GROUP 1DX - 15.0 GM	A607420
HR-05988	0.004	0.09	0	0.03	1.5	0	0	5	0	GROUP 1DX - 15.0 GM	A607420
HR-05989	0.005	0.05	0	0.02	1.5	0	0	4	0	GROUP 1DX - 15.0 GM	A607420
HR-05990	0.006	0.05	0.1	0.01	1.5	0.1	0	5	0	GROUP 1DX - 15.0 GM	A607420
HR-05991	0.01	0.04	0.1	0.02	0.9	0	0	3	0	GROUP 1DX - 15.0 GM	A607420
HR-05992	0.005	0.05	0	0.01	1.5	0	0	4	0.7	GROUP 1DX - 15.0 GM	A607420
HR-05993	0.005	0.05	0	0.01	1.4	0	0	4	0	GROUP 1DX - 15.0 GM	A607420
HR-05994	0.008	0.08	0	0.01	2.3	0	0	5	0	GROUP 1DX - 15.0 GM	A607420
HR-05995	0.009	0.05	0.1	0.03	1.4	0.1	0	5	0	GROUP 1DX - 15.0 GM	A607420
HR-05996	0.007	0.07	0.1	0.02	1.7	0.1	0	5	0	GROUP 1DX - 15.0 GM	A607420
HR-05997	0.017	0.02	0	0.02	0.2	0	0	3	0.9	GROUP 1DX - 15.0 GM	A607420
HR-05998	0.012	0.08	0	0.02	0.5	0.1	0	5	0.7	GROUP 1DX - 15.0 GM	A607420
HR-06320	0.004	0.05	0.1	0.01	1.5	0	0	5	0.9	GROUP 1DX - 15.0 GM	A607420
HR-06323	0.004	0.04	0.1	0.01	1.5	0	0	4	0	GROUP 1DX - 15.0 GM	A607420
HR-06325	0.005	0.05	0.1	0.02	1.8	0	0.07	4	0	GROUP 1DX - 15.0 GM	A607420
HR-06328	0.004	0.04	0	0.02	3	0	0.09	4	1.1	GROUP 1DX - 15.0 GM	A607420
HR-06329	0.005	0.04	0.1	0.01	2.5	0	0.08	5	0.6	GROUP 1DX - 15.0 GM	A607420
HR-06330	0.005	0.03	0.1	0.02	3.3	0	0	4	0.5	GROUP 1DX - 15.0 GM	A607420
HR-06333	0.004	0.09	0	0	1.3	0.1	0	5	0.6	GROUP 1DX - 15.0 GM	A607420
HR-06334	0.003	0.05	0.1	0.02	1.7	0.1	0	2	1	GROUP 1DX - 15.0 GM	A607420
HR-06336	0.003	0.05	0.1	0.01	0.9	0	0	3	0	GROUP 1DX - 15.0 GM	A607420
HR-06337	0.006	0.06	0	0	1.4	0	0	3	0	GROUP 1DX - 15.0 GM	A607420
HR-06338	0.004	0.04	0.1	0.01	1.2	0	0.06	4	0	GROUP 1DX - 15.0 GM	A607420
HR-06339	0.005	0.04	0.1	0.05	0.7	0.1	0.18	5	0.7	GROUP 1DX - 15.0 GM	A607420
HR-06341	0.026	0.02	0.1	0.01	1.3	0	0.1	2	0.5	GROUP 1DX - 15.0 GM	A607420

SAMPLES	GPS ID	Datum	Easting	Northing	Date Time	Elevation	Mo	Cu	Pb	Zn	Ag	Ni	Co
HR-06342	HR06342	NAD83-9V	496460	6873356	26/08/2006 15:30	1857.8	0.3	35.6	16.1	43	0	27.3	11.4
HR-06343	HR06343	NAD83-9V	501506	6883569	27/08/2006 12:04	1470.1	0.3	15.8	12.3	65	0	20	8
HR-06344	HR06344	NAD83-9V	501591	6883512	27/08/2006 12:14	1477.4	0.2	22.8	14.4	76	0	31.5	14
HR-06345	HR06345	NAD83-9V	501619	6883419	27/08/2006 12:23	1479.2	0.2	20.8	13.5	55	0	26.4	8.2
HR-06346	HR06346	NAD83-9V	501662	6883331	27/08/2006 12:33	1467.6	0.2	22.5	30.4	92	0.1	29.2	10.5
HR-06347	HR06347	NAD83-9V	501710	6883238	27/08/2006 12:45	1467	0.3	20.5	24.2	132	0	30.9	10.2
HR-06348	HR06348	NAD83-9V	501771	6883154	27/08/2006 12:56	1457.9	0.2	29.9	23.6	89	0	36.9	13.1
HR-06349	HR06349	NAD83-9V	501871	6883158	27/08/2006 13:17	1461.2	0.2	20.6	43.9	54	0	22.3	7.1
HR-06350	HR06350	NAD83-9V	501976	6883149	27/08/2006 13:29	1472.8	0.1	8.8	7.2	28	0	10.3	4.4



SAMPLES	Mn	Fe	As	U	Au	Th	Sr	Cd	Sb	Bi	V	Ca	P	La	Cr	Mg	Ba	Ti	B	Al
HR-06342	310	3	21	2.2	1.6	3	18	0.1	2.3	0.3	5	0.29	0.054	25	7	0.27	24	0.002	0	0.59
HR-06343	256	2.62	11.5	1.4	0	2.7	13	0.1	0.1	0.3	12	0.08	0.061	17	16	0.51	36	0.009	0	1.48
HR-06344	278	3.54	11.7	0.9	0	10	13	0.1	0.1	0.3	13	0.07	0.037	19	22	0.68	33	0.008	0	1.83
HR-06345	510	2.31	59.5	1.6	0	14.3	28	0.1	0.2	0.2	9	0.34	0.049	35	14	0.61	30	0.031	0	1.1
HR-06346	370	3.31	7.5	3.2	0	8.7	731	0.2	0.4	0.4	4	12.59	0.247	33	8	0.3	38	0.01	0	1.29
HR-06347	260	2.97	14.9	2.5	0	7.3	572	0.4	0.4	0.4	6	8.86	0.073	25	11	0.3	47	0.009	0	1.67
HR-06348	371	3.14	9.6	1.9	0	13.6	129	0.1	0.2	0.4	10	1.78	0.105	31	15	0.51	73	0.01	0	1.72
HR-06349	1691	4.64	6.2	1.3	0.6	12.6	45	0.3	0.1	0.2	23	1.56	0.05	30	24	1.39	98	0.081	0	2.42
HR-06350	202	1.22	6.1	0.9	0	1.5	674	0.1	0.1	0.1	3	22.6	0.057	9	5	0.38	20	0.005	0	0.57

SAMPLES	Na	K	W	Hg	Sc	Tl	S	Ga	Se	Analysis:	Acme file #
HR-06342	0.002	0.03	0.1	0.02	2.5	0	0	1	0	GROUP 1DX - 15.0 GM	A607420
HR-06343	0.006	0.06	0.1	0.01	0.7	0.1	0	4	0	GROUP 1DX - 15.0 GM	A607420
HR-06344	0.004	0.07	0.2	0.02	1.2	0.1	0	5	0	GROUP 1DX - 15.0 GM	A607420
HR-06345	0.009	0.05	0.1	0.01	2.2	0.1	0	2	0	GROUP 1DX - 15.0 GM	A607420
HR-06346	0.022	0.04	0.1	0.02	3.7	0.1	0	2	0	GROUP 1DX - 15.0 GM	A607420
HR-06347	0.024	0.04	0.1	0.03	3.1	0.1	0.08	3	0	GROUP 1DX - 15.0 GM	A607420
HR-06348	0.011	0.09	0	0.01	2.6	0.1	0	4	0	GROUP 1DX - 15.0 GM	A607420
HR-06349	0.009	0.41	0.1	0.01	2.3	0.6	0	5	0	GROUP 1DX - 15.0 GM	A607420
HR-06350	0.007	0.05	0.1	0.01	0.8	0	0	1	0	GROUP 1DX - 15.0 GM	A607420