

**GEOCHEMICAL**

**YMIP REPORT  
06-055**

**GULF MINERALS TARGETS**

**GULF EAST AREA**

NTS # 105 J / 10

LAT: 62° 37 N

LONG: 130° 51 W

**GULF NORTH AREA**

NTS # 105 J / 16

LAT: 62° 47 N

LONG: 130° 03 W

**WATSON LAKE MINING DISTRICT**

**AUTHOR OF REPORT SHAWN RYAN**

**WORK PERFORMED JULY 14 AND AUGUST 10, 2006**

**DATE OF REPORT JANUARY 25, 2007**

## TABLE OF CONTENT

<b>1.0</b>	<b>Summary</b>	<b>p.3</b>
<b>2.0</b>	<b>INTRODUCTION</b>	<b>p.3</b>
<b>3.0</b>	<b>PROJECT LOCATION</b>	<b>p.3</b>
<b>4.0</b>	<b>ACCESS</b>	<b>p.3</b>
<b>5.0</b>	<b>GEOLOGY</b>	<b>p.4</b>
<b>5.1</b>	<b>REGIONAL GEOLOGY</b>	<b>p.4</b>
<b>6.0</b>	<b>WORK PERFORMED / METHODS</b>	<b>p.4</b>
<b>6.1</b>	<b>Soil Survey</b>	<b>p.4</b>
<b>7.0</b>	<b>INTERPRETATION</b>	<b>p.4</b>
<b>8.0</b>	<b>RECOMMENDATION</b>	<b>p.5</b>
<b>9.0</b>	<b>REFERENCES CITED</b>	<b>p.5</b>
<b>10.0</b>	<b>Cost</b>	<b>p.5</b>
<b>11.0</b>	<b>Qualification</b>	<b>p.5</b>
	<b>Dragon east Zn geochemistry map</b>	<b>Figure 1</b>
	<b>Gulf North Zn geochemistry map</b>	<b>Figure 2</b>
	<b>Gulf North Ni geochemistry map</b>	<b>Figure 3</b>
	<b>Gulf North Mo geochemistry map</b>	<b>Figure 4</b>
	<b>Gulf North U geochemistry map</b>	<b>Figure 5</b>
	<b>Assay Data / GPS Soil Location Data</b>	<b>Appendix</b>



## **1.0 SUMMARY**

The Gulf Minerals Focus Regional program has seen 24 man days of work collecting 244 soils on two different target areas. The regional soil program uncovered one area that should be follow for its zinc potential.

## **2.0 INTRODUCTION**

The Gulf Mineral Regional Focus Program was undertaken to evaluate new gold and base metal targets. The Focus Regional program had two separate areas evaluated. On July 13 a crew of was mobilized to the Gulf target area. The crew collected 128 soil samples from Gulf North project on July 14 but got weather out on July 15 and decides to return back to Dawson since poor weather was setting in for a few days. The crew returned on Aug 9 and collected 115 soils on the Gulf East project and staked part of the Gulf North project on August 10, 2006.

## **3.0 LOCATION**

The Gulf Mineral Regional Focus Program is located north- west Ross River. The Gulf East project is located 110 kilometers north-west of Ross River and the Gulf North Project is located 150 kilometers north-west of Ross. The Gulf East is situated on NTS 105J / 10 and the Gulf North is situated on NTS 105 J / 16.

## **4.0 ACCESS**

The main assess point to the Gulf Minerals Focus Regional program was by traveling up the North Canol road for about 2.5 hours to a staging area by Dragon Lake. A helicopter came out Ross River and ferried the crew to the traverse site.

## **5.0 REGIONAL GEOLOGY**

The regional geology description was taken from the Yukon Geology Web Site.

The Gulf Mineral Regional Focus Program covered mainly one rock type. The rock unit is known as the Road River which consists of shale and cherts.

## **6.0 WORK PERFORMED / METHODS**

### **6.1 Regional Soil Survey**

The Gulf Minerals Regional Focus Program had a total of 8 man days of soil work. In total there was 244 soils collected from two different targets areas.

All soil sample where taken with one meter soil probes and sometime with a prospector pick. We carried both on rocky talus slope. Soil sample location where marked on the ground with orange flagging and recorded in Garmin GPS. About 400-500 grams of soil was collected and place in well mark kraft soil bags.

All samples where brought out to Dawson and air dried repacked in rice bags and sent to Acme Labs in Vancouver. Sample where process with Aqua Regia ICP-MS for 36 elements.

The GPS where downloaded every night and store in a personal computer.

## **7.0 INTERPRETATION**

The regional soil survey intent was to follow up some Gulf Minerals heavy mineral silt anomalies that they uncovered during a regional heavy silt survey in the late 70's early 80's. The 2006 program focus on two targets one a gold anomaly found just east of the Sheldon lakes and the second target was a copper zinc anomaly located 8 kilometers south – east of the Itsi Lake area. The Gulf East had 115 soils collected on 8.2 kilometers of traverse with no gold anomalies found. The zinc was slightly anomalous but I feel that due to background since it's located in the road river formation rock unit.

The Gulf north target produce much better results with 129 soils collected on 6.6 kilometers of traverse. A very interesting zinc anomaly showed up on the last three soils collected on the most western traverse. Values of 3573 ppm Zn, 36 ppm Mo, 993 Ni, 44 ppm U, and 75 ppm Cd where detected. The geochemical signature looks interesting from the zinc potential but it may be due also to what I call the nickel sedex horizon. The Nickel Sedex horizon is a shaly horizon that holds all of the mention geochem signature plus a few more. So I question the result but will look into it further.

## 8.0 RECOMMENDATION

The only recommendation I could think of is to conduct a follow up in the Gulf North target. It may be Nickel Sedex type target but another day of follow up when in the area would be beneficial to understanding the nature of the multi element anomaly.

## 10.0 COST

Wage 24 man days @ \$250.00 per day	\$6,000.00
Food Allowance 24 man days @ \$42.50	\$1,020.00
Assay Cost 244 soil @ \$18.00 per sample	\$4,392.00
Transportation Cost	
Helicopter 8.1 hours @ \$1259.00	\$10,197.9
Truck and Gas 5 days @ \$150.00	\$750.00
Report writing	\$500.00
Total	\$22,859.9

## 11.0 QUALIFICATION

I Shawn Ryan located in Dawson City, Yukon work as a professional prospector. I run a small exploration company located in Dawson City.

I have worked in the exploration business for the last 23 years. I worked the first 12 years as a contractor working on numerous projects in the NWT, Ontario, Quebec and the Yukon. I have worked the last 8 years as a local prospector for myself.

I have being trained to run various geophysical instruments and surveys such as magnetic surveys, max-min surveys, induce polarity surveys and VLF surveys.

I have overseen the entire Gulf Project and was party chief in charge.

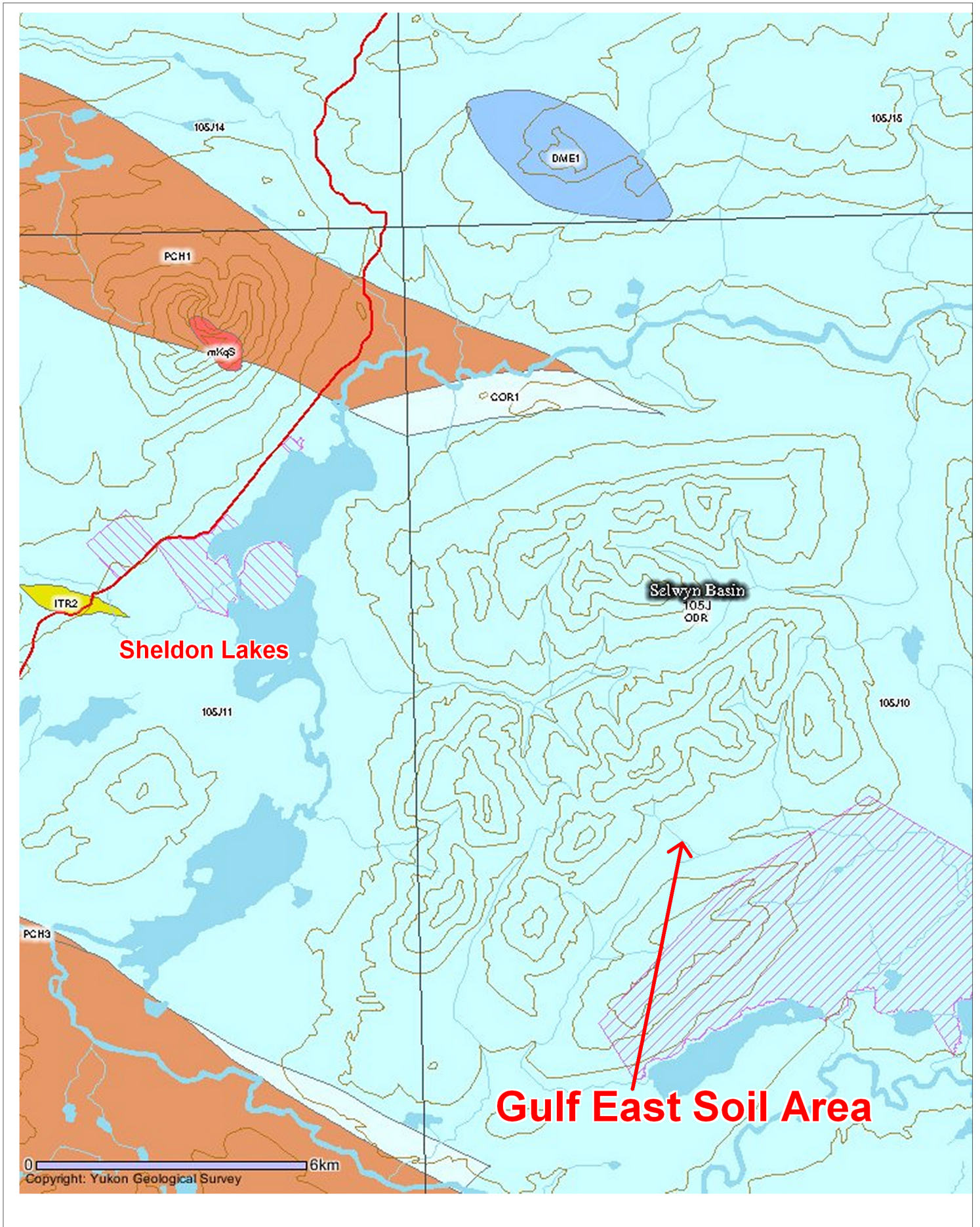
I own 100% of the GULF NORTH claims.

Dated this 28 of January 2007 in Dawson City, Yukon.

Respectfully submitted

Shawn Ryan

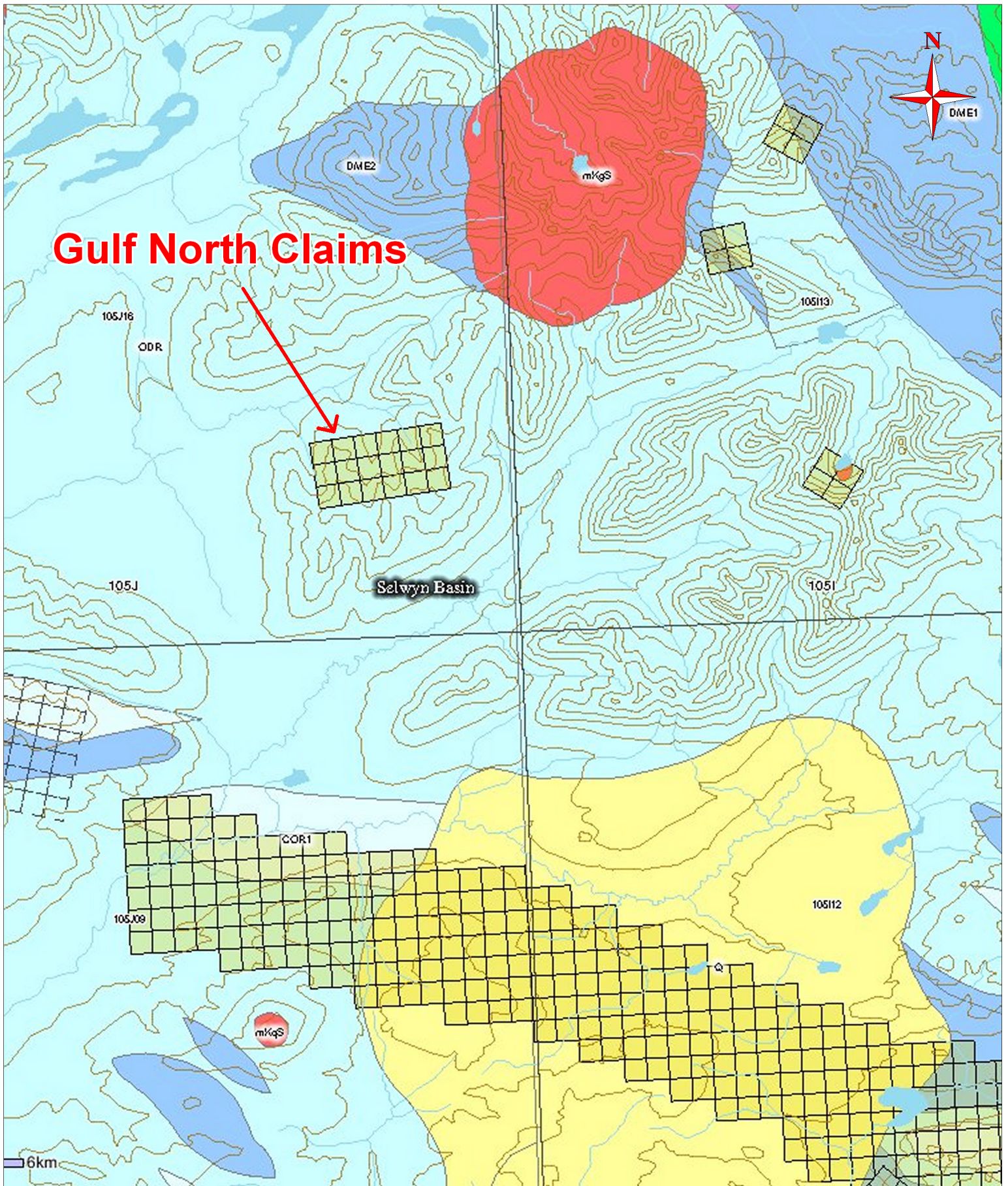
# Gulf East Area



YTG Geology Map



# Gulf North Area



YTG Geology Map



## Gulf East Geology

### ORDOVICIAN TO LOWER DEVONIAN

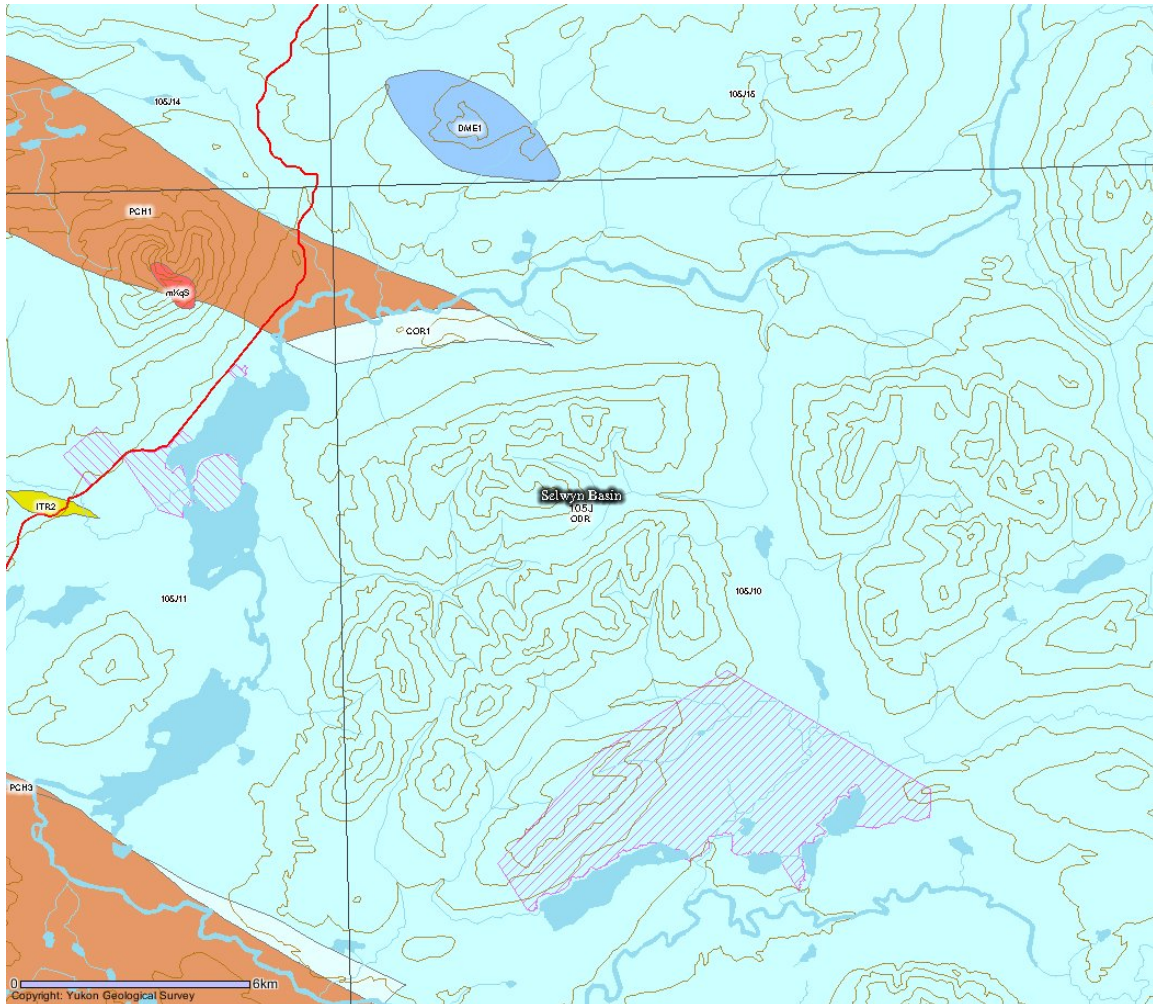
ODR

#### ODR: ROAD RIVER - SELWYN

black shale and chert (1) overlain by orange siltstone (2) or buff platy limestone (3); locally contains beds as old as Middle Cambrian (4); correlations with basinal strata in Richardson Mountains include: ODR1 with CDR2 (upper part) and ODR2 with CDR4 (**Road River Gp.**)

1. black, gun-blue, or silvery white weathering black graptolitic shale and black chert; resistant grey weathering, thin to medium bedded, light grey to black, greenish grey or turquoise chert; minor argillaceous limestone (**Road River Gp., Duo Lake and Elmer Creek**)
2. rusty dark green to orange buff weathering, pyritic, burrowed, thin to thick bedded, argillite and dolomitic siltstone with members or partings of black shale and chert; minor bright orange dolostone (**Road River Gp., Steel**)
3. blue-grey weathering, black limestone; tan, buff, or dark grey weathering platy, silty limestone (**Sapper**)
4. black shale; limestone, limestone conglomerate, and interstratified argillite and pale yellow limestone

# Gulf East Geology



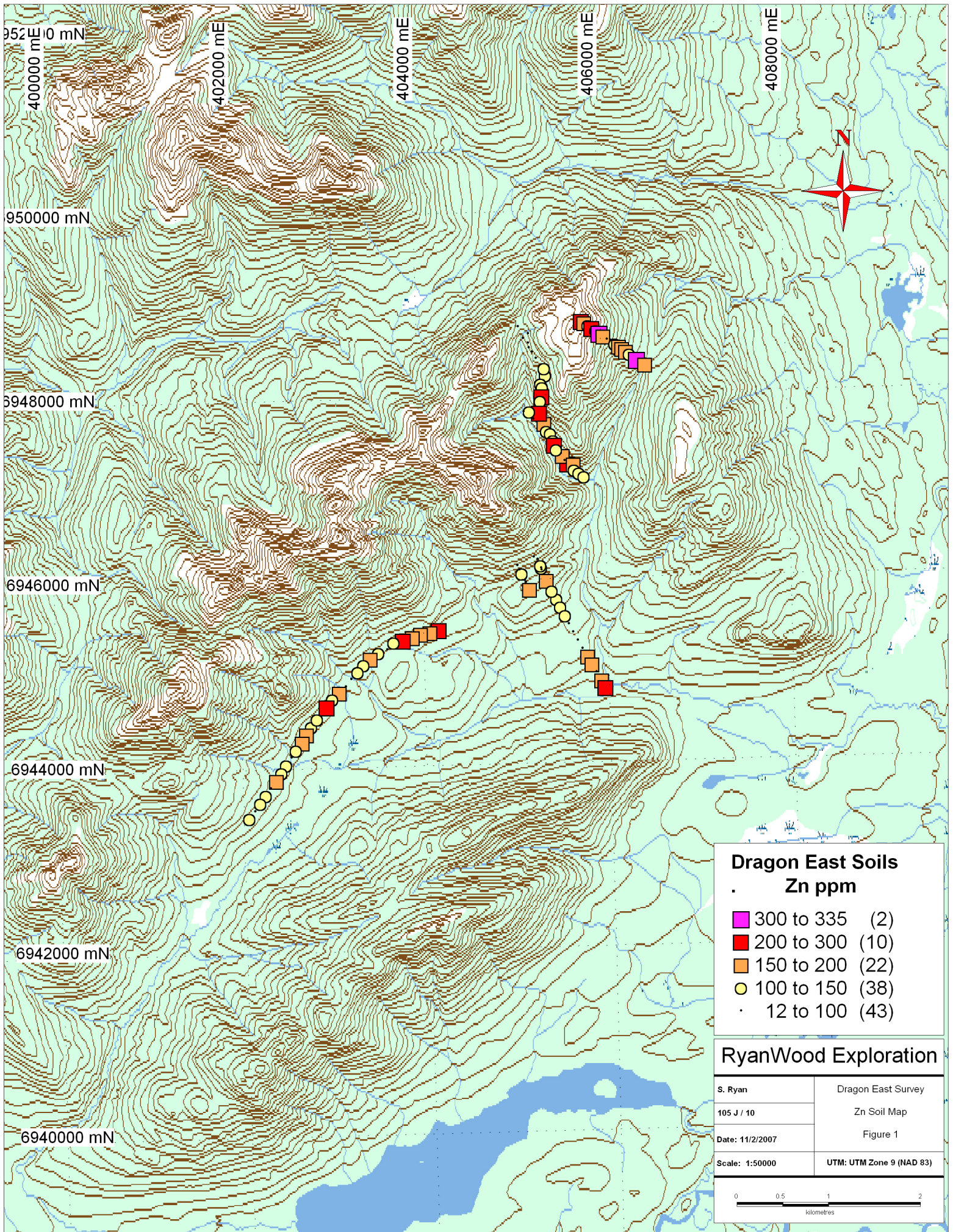
**ODR**

## **ODR: ROAD RIVER - SELWYN**

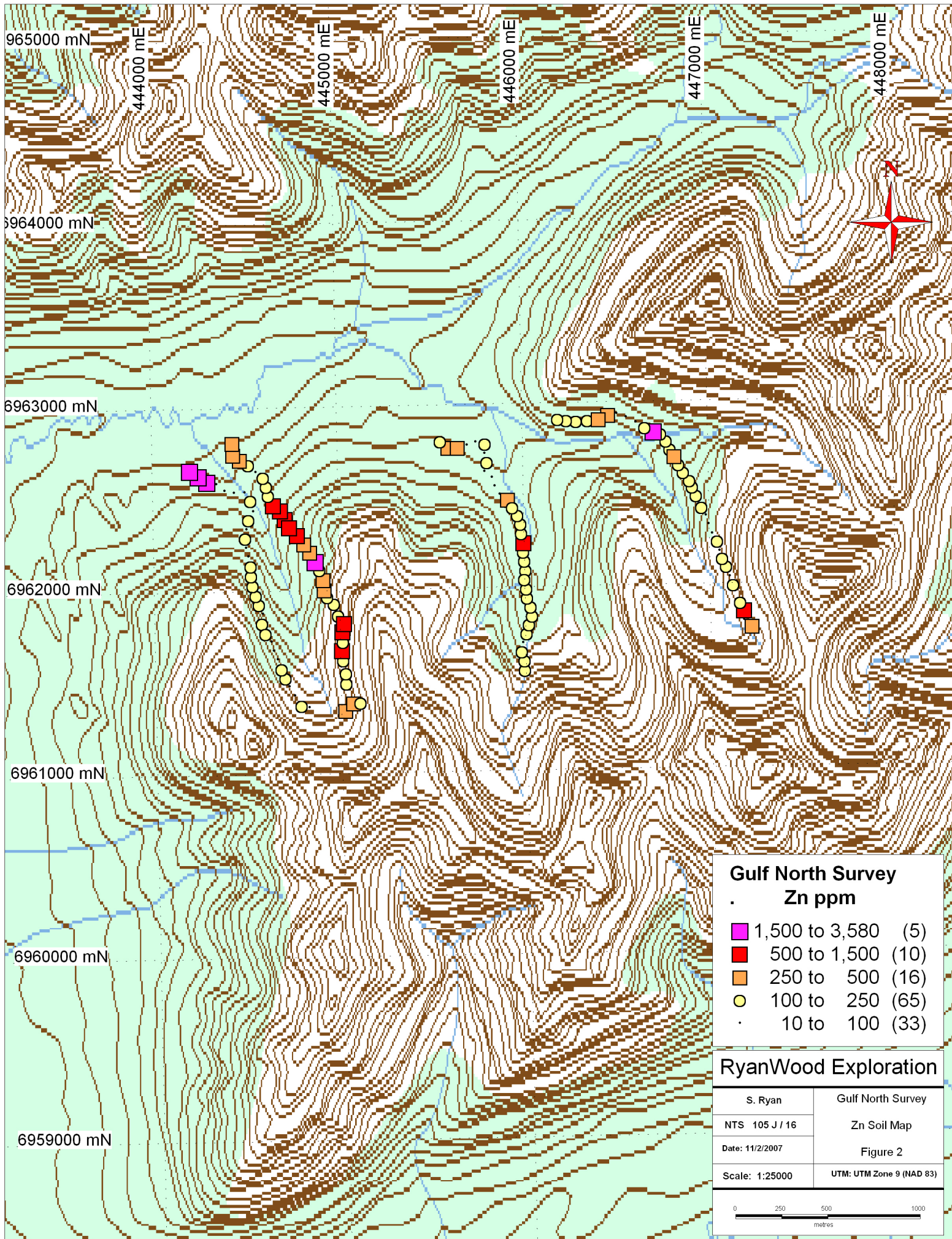
black shale and chert (1) overlain by orange siltstone (2) or buff platy limestone (3); locally contains beds as old as Middle Cambrian (4); correlations with basinal strata in Richardson Mountains include: ODR1 with CDR2 (upper part) and ODR2 with CDR4 (**Road River Gp.**)



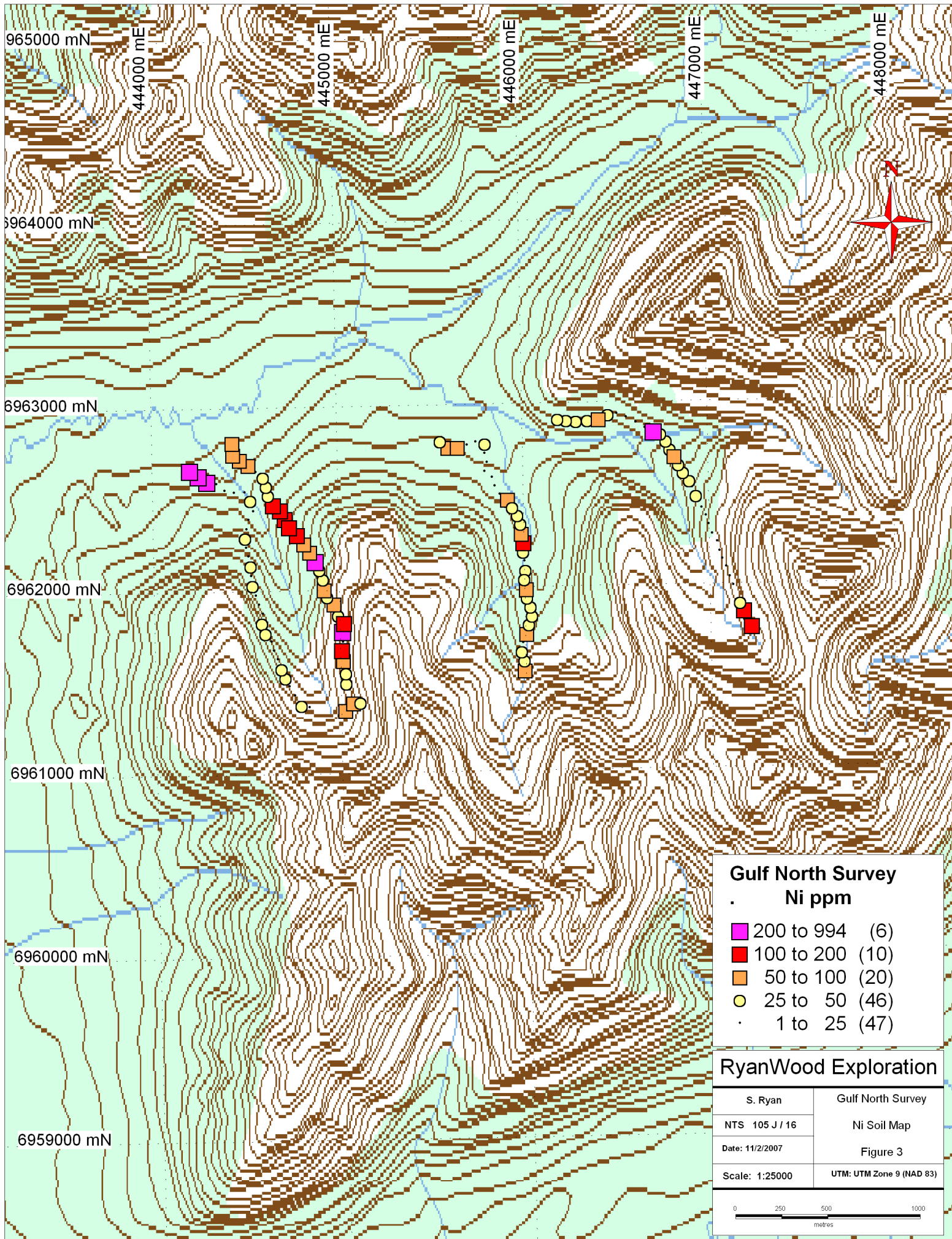




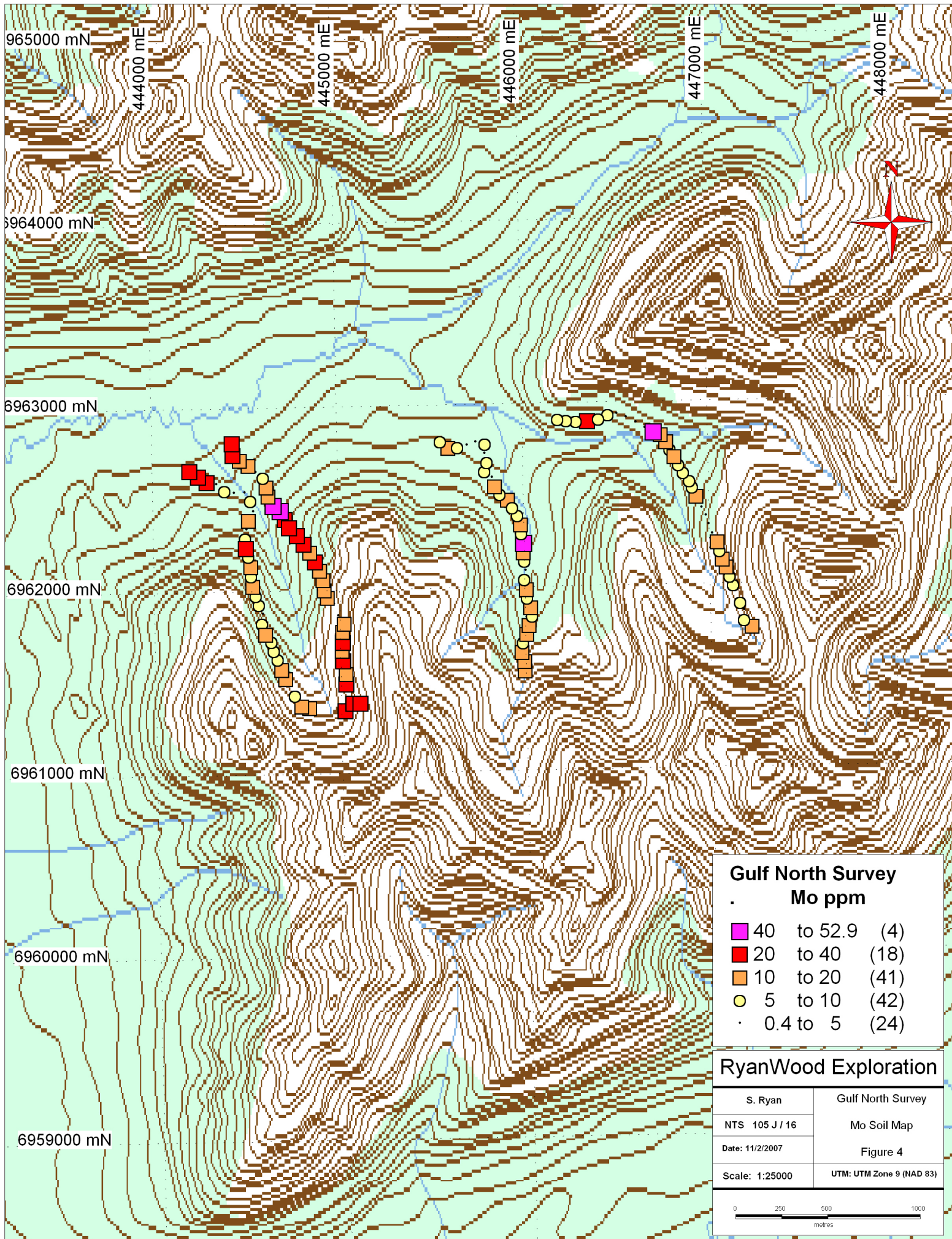












**Gulf North Survey**  
Mo ppm

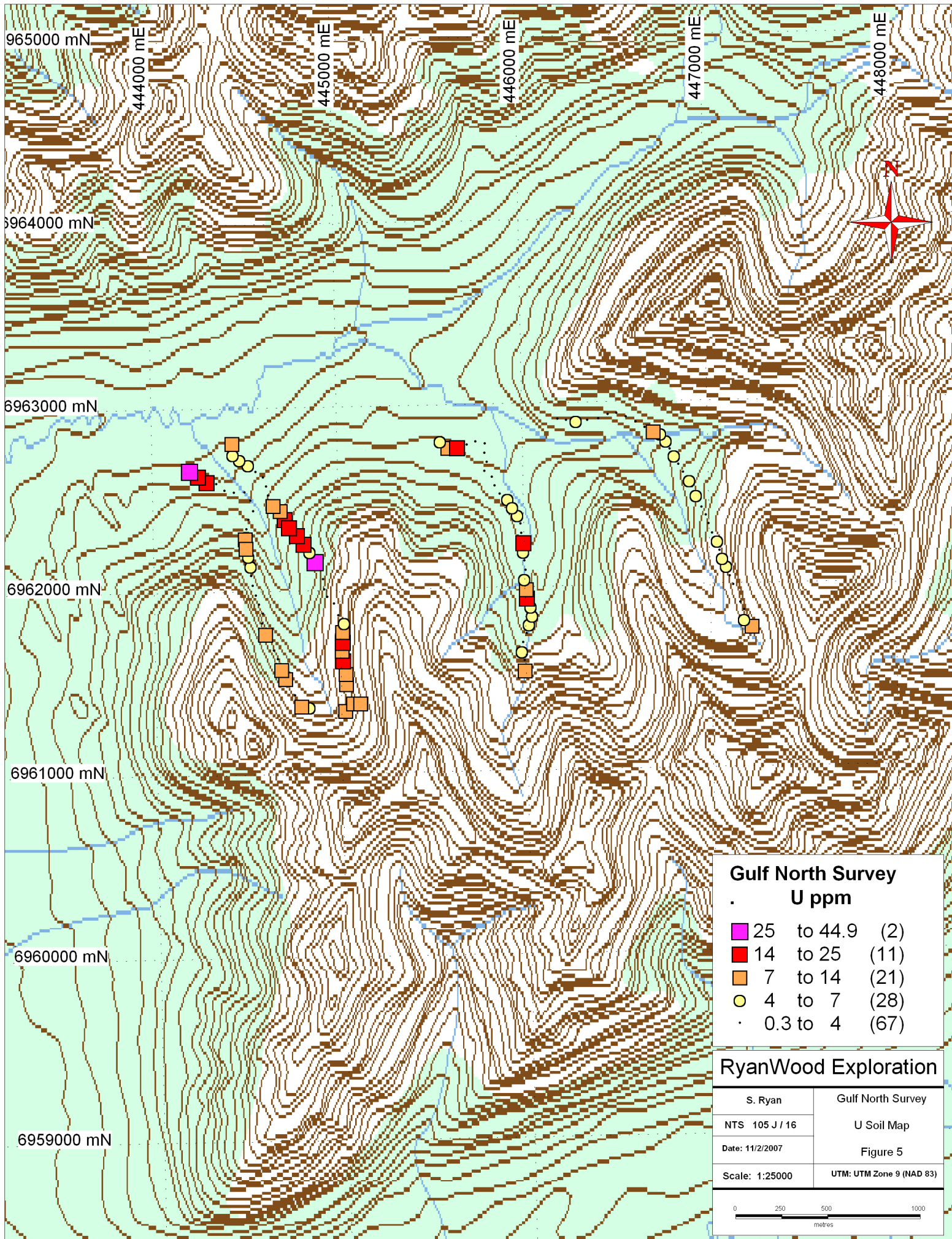
■	40 to 52.9	(4)
■	20 to 40	(18)
■	10 to 20	(41)
●	5 to 10	(42)
·	0.4 to 5	(24)

**RyanWood Exploration**

S. Ryan	Gulf North Survey
NTS 105 J / 16	Mo Soil Map
Date: 11/2/2007	Figure 4
Scale: 1:25000	UTM: UTM Zone 9 (NAD 83)

0 250 500 1000 metres



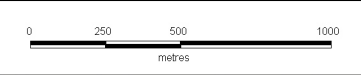


**Gulf North Survey**  
U ppm

■	25 to 44.9	(2)
■	14 to 25	(11)
■	7 to 14	(21)
●	4 to 7	(28)
·	0.3 to 4	(67)

**RyanWood Exploration**

S. Ryan	Gulf North Survey
NTS 105 J / 16	U Soil Map
Date: 11/2/2007	Figure 5
Scale: 1:25000	UTM: UTM Zone 9 (NAD 83)



SAMPLES	GPS ID	Datum	Easting	Northing	Date Time	Elevation	Mo	Cu	Pb	Zn	Ag	Ni	Co
DE 02571	DE02571	NAD83-9V	405794	6948792	10/08/2006 12:19	1593.2	3.3	91	13.2	230	0.2	58.6	11.9
DE 02572	DE02572	NAD83-9V	405827	6948774	10/08/2006 12:27	1580.1	3.3	81.2	11.2	178	0.2	45	11.2
DE 02573	DE02573	NAD83-9V	405868	6948744	10/08/2006 12:34	1556.3	4.1	75.1	20.6	132	0	42.5	6.2
DE 02574	DE02574	NAD83-9V	405906	6948714	10/08/2006 12:39	1528.3	4.2	95.5	14.2	202	0.4	39.3	12.4
DE 02575	DE02575	NAD83-9V	405949	6948685	10/08/2006 12:46	1507.8	3.4	51.7	13.4	135	0.1	26.2	5.6
DE 02576	DE02576	NAD83-9V	405989	6948656	10/08/2006 12:52	1484.1	3.6	74.6	11.6	334	0	69.1	13.8
DE 02577	DE02577	NAD83-9V	406030	6948625	10/08/2006 13:00	1460.9	2.9	43.2	18.7	151	0	35.7	10.1
DE 02578	DE02578	NAD83-9V	406069	6948589	10/08/2006 13:09	1437.1	2.4	25.1	8.9	87	0	17.9	4.1
DE 02579	DE02579	NAD83-9V	406110	6948574	10/08/2006 13:19	1416.7	1.5	15	5.4	34	0	7.4	2.2
DE 02580	DE02580	NAD83-9V	406152	6948536	10/08/2006 13:29	1401.2	2.7	48.7	15.3	120	0.3	23.6	4.3
DE 02581	DE02581	NAD83-9V	406194	6948511	10/08/2006 13:35	1369.5	6.6	67.8	10.5	159	0	34	5.5
DE 02582	DE02582	NAD83-9V	406228	6948482	10/08/2006 13:41	1353.9	7	56.3	16.8	193	0.2	35.3	10.9
DE 02639	DE02639	NAD83-9V	402752	6944456	10/08/2006 13:31	1146.4	4.9	75.5	9.9	123	1.2	31.1	5
DE 02640	DE02640	NAD83-9V	402700	6944377	10/08/2006 13:42	1146.4	4.4	57	8.5	155	1.1	32.7	6.7
DE 02641	DE02641	NAD83-9V	402652	6944289	10/08/2006 13:52	1141.5	5.9	60.2	12.8	171	0.4	30.7	15.5
DE 02642	DE02642	NAD83-9V	402581	6944206	10/08/2006 14:10	1151.5	4.7	51.9	10.4	146	0.3	26.6	8.1
DE 02643	DE02643	NAD83-9V	402531	6944127	10/08/2006 14:18	1156.7	1.1	9.5	4.7	16	0	3.6	0.8
DE 02644	DE02644	NAD83-9V	402472	6944046	10/08/2006 14:28	1158.8	3.8	58.8	12.7	125	0.2	41.2	14.2
DE 02645	DE02645	NAD83-9V	402419	6943962	10/08/2006 14:38	1167.1	4.4	48	11.4	122	0.2	26	7.9
DE 02646	DE02646	NAD83-9V	402359	6943878	10/08/2006 14:46	1160.1	4.8	75.3	13.3	175	0.4	38	12.7
DE 02801	DE02801	NAD83-9V	405109	6948749	10/08/2006 9:48	1456.3	3.4	58.7	15.8	80	0.4	20.3	6.7
DE 02802	DE02802	NAD83-9V	405217	6948673	10/08/2006 10:09	1469.1	3.4	57.7	13.9	96	0.1	37.4	12.2
DE 02803	DE02803	NAD83-9V	405161	6948622	10/08/2006 10:20	1469.1	3.4	45.1	13.6	87	0.1	21.5	6.8
DE 02804	DE02804	NAD83-9V	405214	6948568	10/08/2006 10:25	1451.5	4.7	46	15.9	88	0.2	22.8	8.1
DE 02805	DE02805	NAD83-9V	405222	6948520	10/08/2006 10:34	1455.1	4.2	60	14.5	90	0.2	21.2	6.5
DE 02806	DE02806	NAD83-9V	405252	6948469	10/08/2006 10:45	1444.1	5.8	80.3	40.6	81	0.1	33.4	17.5
DE 02807	DE02807	NAD83-9V	405293	6948401	10/08/2006 10:52	1437.4	2.6	30.3	11.2	56	0.1	15.4	4.3
DE 02808	DE02808	NAD83-9V	405378	6948321	10/08/2006 11:02	1425.9	1.8	14.8	7	69	0.1	9.8	8.3
DE 02809	DE02809	NAD83-9V	405380	6948290	10/08/2006 11:17	1425.9	5.2	45.9	15.8	117	0.2	31.8	7.1
DE 02810	DE02810	NAD83-9V	405389	6948214	10/08/2006 11:22	1431.6	4.4	41.6	14.2	120	0.2	29.6	10
DE 02811	DE02811	NAD83-9V	405372	6948155	10/08/2006 11:31	1414.6	2.3	64.2	15.3	85	0	46.1	13
DE 02812	DE02812	NAD83-9V	405336	6948119	10/08/2006 11:40	1403.9	4.9	60.2	16.6	101	0.5	43.2	6.4
DE 02813	DE02813	NAD83-9V	405354	6948083	10/08/2006 11:48	1399	4.2	87.6	15.4	132	0.6	55.7	11.9
DE 02814	DE02814	NAD83-9V	405359	6948037	10/08/2006 11:56	1385	1.6	36.4	6.2	63	0.3	26.6	6.6
DE 02815	DE02815	NAD83-9V	405348	6947984	10/08/2006 12:04	1386.2	14.2	63.6	18.6	217	0.7	88.2	10.4
DE 02816	DE02816	NAD83-9V	405328	6947935	10/08/2006 12:11	1375.3	3.5	52.4	13.4	122	0.2	39.7	12.3
DE 02817	DE02817	NAD83-9V	405316	6947808	10/08/2006 12:28	1316.7	4.9	65.6	13.3	203	0.6	44.2	13.1
DE 02818	DE02818	NAD83-9V	405251	6947790	10/08/2006 12:41	1283.8	1	17.2	4.7	27	0.2	7.5	2.6
DE 02819	DE02819	NAD83-9V	405205	6947822	10/08/2006 12:51	1278.3	3.6	50	13.1	128	0.2	35.2	13
DE 02820	DE02820	NAD83-9V	405146	6947825	10/08/2006 13:00	1262.2	3.6	32.1	9.9	99	0.1	23.2	6.2
DE 02821	DE02821	NAD83-9V	405204	6947757	10/08/2006 13:13	1261.6	4	50	13	99	0.2	24	7.2
DE 02822	DE02822	NAD83-9V	405253	6947742	10/08/2006 13:22	1262.5	2.9	25.5	10.7	92	0.3	20.8	8.9
DE 02823	DE02823	NAD83-9V	405283	6946146	10/08/2006 12:49	1262.5	2.1	25	4.8	107	0.4	24.9	3.9
DE 02824	DE02824	NAD83-9V	405291	6946124	10/08/2006 12:57	1262.5	3.3	44.4	10	125	0.2	28.3	11
DE 02825	DE02825	NAD83-9V	405363	6947690	10/08/2006 13:57	1273.8	4.6	53.9	14	164	0.3	43.8	17.2
DE 02826	DE02826	NAD83-9V	405387	6947607	10/08/2006 14:10	1262.2	4.1	35.3	14.5	131	0.2	26.9	9.6
DE 02827	DE02827	NAD83-9V	405429	6947581	10/08/2006 14:20	1265.2	3.4	33.5	12.1	115	0.3	25.7	7.5
DE 02828	DE02828	NAD83-9V	405455	6947501	10/08/2006 14:26	1241.8	4.1	35.5	11.2	115	0.3	21.5	5.8
DE 02829	DE02829	NAD83-9V	405466	6947455	10/08/2006 14:35	1257.3	6.7	53.1	12.2	203	0.2	39.6	10.4
DE 02830	DE02830	NAD83-9V	405489	6947403	10/08/2006 14:51	1256.1	5.1	32.7	10.7	112	0.2	20.8	4.3
DE 02831	DE02831	NAD83-9V	405554	6947339	10/08/2006 14:59	1238.7	4.7	67.8	13.1	180	0.3	45.9	15.8
DE 02832	DE02832	NAD83-9V	405577	6947282	10/08/2006 15:08	1232	2.8	22.6	6.9	59	0.3	12	2.8
DE 02833	DE02833	NAD83-9V	405606	6947247	10/08/2006 15:19	1226.5	5.3	81.6	12.5	222	0.5	45.1	12.8
DE 02834	DE02834	NAD83-9V	405671	6947242	10/08/2006 15:27	1211.3	5	69.1	12.8	165	0.6	40.3	12.5
DE 02835	DE02835	NAD83-9V	405677	6947177	10/08/2006 15:35	1236	4.1	36.7	10.3	149	0.3	27.1	6.5
DE 02836	DE02836	NAD83-9V	405725	6947144	10/08/2006 15:42	1222.9	4.2	42.5	15	129	0.1	27.5	6.8
DE 02837	DE02837	NAD83-9V	405781	6947103	10/08/2006 15:52	1214.6	3.5	37.7	8.6	118	0.2	26.7	6.4

SAMPLES	Mn	Fe	As	U	Au	Th	Sr	Cd	Sb	Bi	V	Ca	P	La	Cr	Mg	Ba	Ti	B	Al
DE 02571	557	4.05	10.7	1.6	6.6	3.9	25	0.8	1.7	0.3	53	0.15	0.12	13	21	0.28	164	0.028	2	1.15
DE 02572	558	3.45	10	1.5	9.9	0.4	29	0.5	1.6	0.2	59	0.1	0.131	11	25	0.23	133	0.013	2	1.09
DE 02573	309	3.14	8.9	0.6	3.3	0.3	10	0.2	1.5	0.3	69	0.02	0.086	12	28	0.04	86	0.013	2	0.37
DE 02574	1385	2.77	7.9	1.9	10.8	0.1	36	0.8	1.8	0.2	51	0.09	0.21	9	22	0.14	214	0.003	4	0.87
DE 02575	408	1.89	6.2	0.7	2.2	0	11	0.4	1.3	0.2	53	0.02	0.109	10	18	0.04	151	0.002	3	0.47
DE 02576	369	4.12	14	1.2	4	1.2	14	0.6	1.7	0.3	52	0.08	0.102	11	19	0.2	105	0.018	1	1.06
DE 02577	432	2.93	13.1	1	5.7	0.8	11	0.3	1.7	0.3	55	0.06	0.108	13	20	0.18	76	0.023	2	0.81
DE 02578	159	1.67	6.1	0.6	2.3	0.1	8	0.1	1.3	0.2	64	0.01	0.04	12	16	0.06	81	0.011	2	0.76
DE 02579	90	0.78	2.6	0.3	0	0.1	8	0.1	0.5	0.1	22	0.05	0.049	6	6	0.02	43	0.015	1	0.51
DE 02580	163	3.15	11.5	0.6	1.3	0.2	18	0.1	1.7	0.3	74	0.01	0.079	7	30	0.05	161	0.007	3	0.69
DE 02581	260	1.98	5	0.4	0	0	11	0.2	1.1	0.2	42	0.01	0.061	6	10	0.02	66	0.005	2	0.56
DE 02582	894	3.41	15	2.1	3.4	0.8	31	0.4	2.3	0.3	111	0.16	0.288	9	27	0.23	175	0.01	4	1.32
DE 02639	211	1.55	9	4	5.8	0.6	56	1.3	2.4	0.2	136	0.31	0.143	7	23	0.21	692	0.005	5	1.16
DE 02640	474	1.91	7.3	2.5	7.3	0.4	47	1.2	2	0.2	93	0.27	0.122	8	20	0.26	637	0.005	6	1.23
DE 02641	1024	2.31	11.2	2.7	8.4	2	41	0.8	3	0.2	98	0.16	0.167	10	20	0.22	337	0.008	5	0.97
DE 02642	566	2.09	9.8	1.8	4.8	1.2	26	0.6	2.2	0.2	80	0.08	0.095	9	18	0.24	306	0.007	6	1.04
DE 02643	42	0.36	2.4	0.3	1.1	0	5	0.4	0.2	0.1	23	0.01	0.038	6	6	0.03	92	0.003	1	0.41
DE 02644	2944	2.41	9.2	1.9	6.9	2.6	26	0.8	1.7	0.2	59	0.13	0.109	12	17	0.23	386	0.007	3	0.89
DE 02645	419	3.08	14.6	1.6	9.5	2.7	16	0.2	1.8	0.2	81	0.03	0.096	10	26	0.23	274	0.006	3	1.34
DE 02646	948	2.67	11.3	2.1	7.6	1.4	32	0.6	2.2	0.2	78	0.13	0.111	9	22	0.31	353	0.006	6	1.26
DE 02801	378	3.27	8.8	1.3	6.9	0.1	16	0.4	1.7	0.3	52	0.01	0.119	7	22	0.15	236	0.005	2	1.11
DE 02802	1078	3.44	12	1	4.2	0.3	19	0.1	1.8	0.2	49	0.03	0.08	10	22	0.16	154	0.012	1	1
DE 02803	410	3.15	9.5	1	3.5	0.2	17	0.2	1.5	0.3	51	0.02	0.096	10	23	0.14	173	0.004	2	1.09
DE 02804	319	3.26	11.2	0.8	2.1	0.2	30	0.1	1.7	0.3	54	0.01	0.149	9	18	0.1	185	0.006	4	0.9
DE 02805	299	4.54	11.1	0.8	2.5	0.6	16	0.2	1.7	0.3	46	0.01	0.106	8	21	0.15	185	0.005	2	1.4
DE 02806	1013	4.34	22.6	1.3	1.1	1.2	23	0.1	3.1	0.6	36	0.01	0.133	8	20	0.18	292	0.005	4	1.27
DE 02807	285	1.82	6.7	0.6	1.3	0	15	0.1	1.1	0.2	36	0.01	0.078	6	12	0.07	143	0.002	2	0.73
DE 02808	2557	1.25	3.2	0.7	1	0	11	0.9	0.7	0.1	25	0.03	0.109	3	10	0.06	342	0.002	1	0.67
DE 02809	782	2.87	12.9	1.2	2	0.1	31	0.1	2.3	0.2	60	0.01	0.097	9	17	0.07	239	0.006	2	0.83
DE 02810	1114	2.87	11.9	1.3	1.4	0.1	21	0.3	2.2	0.3	68	0.02	0.108	9	22	0.16	180	0.005	2	1.06
DE 02811	1555	2.46	8.2	0.6	0.6	0.2	10	0.1	1.3	0.3	39	0.01	0.059	6	14	0.06	135	0.012	1	0.82
DE 02812	508	2.89	13.9	0.7	0	0.1	49	0.1	2.6	0.2	71	0.01	0.093	5	17	0.03	333	0.005	3	0.66
DE 02813	2870	3.02	20.2	0.8	7.9	0.5	16	0.2	3.2	0.3	64	0.02	0.049	4	21	0.04	289	0.007	2	0.74
DE 02814	862	1.76	7.3	0.4	2	0.3	10	0.1	1.2	0.2	35	0.03	0.042	4	10	0.05	83	0.015	1	0.63
DE 02815	1059	4.84	18.3	5.2	3.5	1	174	0.3	2.4	0.2	87	0.02	0.25	13	22	0.11	529	0.003	3	1.07
DE 02816	1357	2.92	9.4	0.9	2.8	0.2	37	0.4	1.4	0.2	44	0.03	0.081	8	16	0.17	296	0.006	2	0.91
DE 02817	1550	2.19	6.4	3.9	6.6	0.3	107	1.6	2.3	0.2	63	0.91	0.129	6	17	0.23	1051	0.005	5	0.88
DE 02818	269	0.79	2.3	0.8	2.5	0	8	0.4	0.3	0.1	25	0.03	0.056	5	9	0.06	134	0.003	3	0.62
DE 02819	1168	2.79	9.7	1.2	5.6	0.6	26	0.4	1.7	0.2	59	0.06	0.093	12	22	0.26	226	0.012	3	1.09
DE 02820	308	2.29	8.1	0.9	3.5	0.3	13	0.3	1.5	0.2	61	0.03	0.047	9	21	0.22	170	0.01	2	1.04
DE 02821	531	2.03	7.8	0.8	2.6	0.2	18	0.1	1.5	0.2	74	0.03	0.11	9	19	0.1	167	0.007	5	0.67
DE 02822	2107	1.77	7	0.9	4	0.2	22	0.8	1.1	0.2	59	0.1	0.072	8	17	0.2	500	0.009	3	0.92
DE 02823	311	1.15	3.3	1.5	4.6	0	41	0.9	0.8	0.1	62	0.39	0.079	5	12	0.18	797	0.008	3	0.86
DE 02824	747	2.22	6.6	1.4	6.4	0.5	27	0.8	1.3	0.2	54	0.1	0.064	9	18	0.23	379	0.008	4	1.06
DE 02825	1607	2.82	10.6	1.6	8.1	1.6	32	0.8	2	0.2	76	0.13	0.094	10	23	0.31	318	0.009	3	1.14
DE 02826	626	3.2	12	0.8	2.1	0.9	21	0.4	1.7	0.3	86	0.04	0.08	12	24	0.19	206	0.016	2	1.14
DE 02827	520	2.34	8.3	0.9	2.1	0.4	17	0.4	1.5	0.2	76	0.03	0.071	11	19	0.17	189	0.011	2	0.97
DE 02828	412	2.18	7.9	1	2.2	0.1	19	0.3	1.7	0.2	88	0.03	0.072	8	18	0.16	154	0.007	2	0.97
DE 02829	716	2.75	11.4	1.8	6.8	0.7	25	0.8	3.1	0.2	121	0.04	0.098	10	26	0.22	300	0.007	4	1.05
DE 02830	227	2.05	7.9	0.9	2	0.2	21	0.3	1.8	0.2	94	0.02	0.075	10	17	0.11	227	0.008	2	0.95
DE 02831	1978	2.76	10.5	2	5.9	1.1	24	0.9	2.2	0.2	88	0.05	0.111	11	23	0.22	278	0.011	3	1.49
DE 02832	98	1.22	4.8	0.5	0.5	0	14	0.2	0.9	0.2	61	0.01	0.044	8	13	0.05	170	0.007	3	0.54
DE 02833	1038	2.39	9.7	3.2	6.9	1.2	33	0.9	3.1	0.2	121	0.09	0.109	12	23	0.21	361	0.012	3	1.03
DE 02834	1000	2.92	11.1	1.8	7.4	1.7	26	0.6	2.4	0.2	84	0.05	0.099	9	24	0.2	242	0.009	3	1.49
DE 02835	505	2.03	7.7	1.3	4.2	1.3	19	0.3	2.1	0.2	92	0.03	0.072	9	19	0.17	199	0.013	3	0.9
DE 02836	401	2.88	9.8	0.9	1.6	1.4	23	0.3	1.8	0.2	93	0.02	0.082	9	22	0.14	224	0.012	2	1.12
DE 02837	478	1.89	7.7	1.3	3.2	0.3	15	0.7	1.7	0.2	71	0.03	0.092	8	19	0.18	286	0.006	4	0.91

SAMPLES	Na	K	W	Hg	Sc	Tl	S	Ga	Se	Analysis	Acme file
DE 02571	0.004	0.07	0.2	0.03	3.2	0.1	0	3	1.8	GROUP 1DX - 15.0 GM	A606514
DE 02572	0.004	0.07	0.2	0.06	1.1	0.2	0	4	1.7	GROUP 1DX - 15.0 GM	A606514
DE 02573	0.002	0.06	0.2	0.02	0.9	0.1	0	4	0.6	GROUP 1DX - 15.0 GM	A606514
DE 02574	0.003	0.12	0.1	0.1	0.3	0.2	0	4	2.4	GROUP 1DX - 15.0 GM	A606514
DE 02575	0.004	0.09	0.1	0.04	0.2	0.1	0	4	1	GROUP 1DX - 15.0 GM	A606514
DE 02576	0.003	0.06	0.3	0.04	2.3	0.1	0	3	1.1	GROUP 1DX - 15.0 GM	A606514
DE 02577	0.004	0.06	0.3	0.02	1.3	0.1	0	5	1.2	GROUP 1DX - 15.0 GM	A606514
DE 02578	0.006	0.05	0.2	0.01	0.4	0.1	0	5	0.7	GROUP 1DX - 15.0 GM	A606514
DE 02579	0.013	0.03	0.1	0.01	0.3	0	0	2	0	GROUP 1DX - 15.0 GM	A606514
DE 02580	0.007	0.11	0.1	0.05	0.9	0.3	0	6	1.9	GROUP 1DX - 15.0 GM	A606514
DE 02581	0.009	0.04	0.1	0.02	0.2	0.1	0	4	0.6	GROUP 1DX - 15.0 GM	A606514
DE 02582	0.003	0.16	0.1	0.07	1.6	0.3	0	6	1.9	GROUP 1DX - 15.0 GM	A606514
DE 02639	0.012	0.12	0.1	0.35	1.9	0.3	0	3	1.5	GROUP 1DX - 15.0 GM	A606514
DE 02640	0.012	0.16	0.1	0.22	1.2	0.2	0	4	2.2	GROUP 1DX - 15.0 GM	A606514
DE 02641	0.003	0.15	0.1	0.12	2.2	0.3	0	3	1.4	GROUP 1DX - 15.0 GM	A606514
DE 02642	0.006	0.14	0.1	0.09	2	0.2	0	4	1.2	GROUP 1DX - 15.0 GM	A606514
DE 02643	0.007	0.05	0	0.02	0.2	0.1	0	3	0	GROUP 1DX - 15.0 GM	A606514
DE 02644	0.003	0.11	0.1	0.19	2.6	0.2	0	3	1.1	GROUP 1DX - 15.0 GM	A606514
DE 02645	0.003	0.13	0.1	0.08	2.4	0.2	0	5	1.3	GROUP 1DX - 15.0 GM	A606514
DE 02646	0.005	0.18	0.1	0.15	2.3	0.3	0	4	2.2	GROUP 1DX - 15.0 GM	A606514
DE 02801	0.004	0.1	0.1	0.09	0.4	0.2	0.06	5	1.4	GROUP 1DX - 15.0 GM	A606514
DE 02802	0.003	0.08	0.1	0.04	0.9	0.2	0	4	1.4	GROUP 1DX - 15.0 GM	A606514
DE 02803	0.004	0.11	0.1	0.06	0.3	0.2	0	5	1	GROUP 1DX - 15.0 GM	A606514
DE 02804	0.006	0.12	0.1	0.04	0.6	0.2	0	6	1.2	GROUP 1DX - 15.0 GM	A606514
DE 02805	0.004	0.14	0.1	0.06	1.1	0.2	0	6	1.5	GROUP 1DX - 15.0 GM	A606514
DE 02806	0.006	0.18	0.1	0.08	1.5	0.2	0	5	1.7	GROUP 1DX - 15.0 GM	A606514
DE 02807	0.007	0.08	0.1	0.03	0.2	0.1	0	4	0.5	GROUP 1DX - 15.0 GM	A606514
DE 02808	0.01	0.06	0.1	0.04	0.1	0.1	0	3	0.6	GROUP 1DX - 15.0 GM	A606514
DE 02809	0.004	0.11	0.1	0.07	0.4	0.2	0	4	1.9	GROUP 1DX - 15.0 GM	A606514
DE 02810	0.004	0.09	0.1	0.06	0.3	0.2	0	5	1.5	GROUP 1DX - 15.0 GM	A606514
DE 02811	0.009	0.05	0.1	0.03	1	0.1	0	4	0.8	GROUP 1DX - 15.0 GM	A606514
DE 02812	0.012	0.12	0.1	0.04	0.4	0.3	0.16	4	2.3	GROUP 1DX - 15.0 GM	A606514
DE 02813	0.006	0.06	0.1	0.1	1.4	0.2	0	4	2.6	GROUP 1DX - 15.0 GM	A606514
DE 02814	0.012	0.04	0.1	0.04	0.7	0.1	0	3	1.3	GROUP 1DX - 15.0 GM	A606514
DE 02815	0.011	0.18	0.1	0.25	1.2	0.7	0.35	4	3	GROUP 1DX - 15.0 GM	A606514
DE 02816	0.005	0.1	0.1	0.05	0.5	0.1	0	4	1	GROUP 1DX - 15.0 GM	A606514
DE 02817	0.006	0.13	0.1	0.15	1.1	0.2	0.1	4	2.2	GROUP 1DX - 15.0 GM	A606514
DE 02818	0.014	0.05	0.1	0.07	0.1	0.1	0	3	0	GROUP 1DX - 15.0 GM	A606514
DE 02819	0.004	0.13	0.1	0.05	1.5	0.2	0	5	1.4	GROUP 1DX - 15.0 GM	A606514
DE 02820	0.003	0.08	0.2	0.06	1	0.2	0	5	0.9	GROUP 1DX - 15.0 GM	A606514
DE 02821	0.004	0.14	0.1	0.04	0.6	0.2	0	6	1.2	GROUP 1DX - 15.0 GM	A606514
DE 02822	0.008	0.1	0.1	0.05	0.7	0.1	0	4	0.7	GROUP 1DX - 15.0 GM	A606514
DE 02823	0.019	0.07	0.1	0.07	0.4	0.1	0.09	3	2.1	GROUP 1DX - 15.0 GM	A606514
DE 02824	0.008	0.11	0.1	0.08	1.4	0.2	0	4	1.5	GROUP 1DX - 15.0 GM	A606514
DE 02825	0.003	0.12	0.1	0.07	1.9	0.2	0	4	2	GROUP 1DX - 15.0 GM	A606514
DE 02826	0.003	0.11	0.1	0.03	1.5	0.2	0	6	1.3	GROUP 1DX - 15.0 GM	A606514
DE 02827	0.003	0.1	0.2	0.02	1	0.2	0	5	1.1	GROUP 1DX - 15.0 GM	A606514
DE 02828	0.006	0.09	0.1	0.02	0.4	0.2	0	5	1	GROUP 1DX - 15.0 GM	A606514
DE 02829	0.002	0.11	0.1	0.05	1.3	0.2	0	4	1.7	GROUP 1DX - 15.0 GM	A606514
DE 02830	0.006	0.1	0.1	0.02	0.8	0.2	0.08	5	1.2	GROUP 1DX - 15.0 GM	A606514
DE 02831	0.005	0.1	0.2	0.12	1.9	0.2	0	4	1.3	GROUP 1DX - 15.0 GM	A606514
DE 02832	0.006	0.08	0.1	0.02	0.3	0.1	0	4	0.7	GROUP 1DX - 15.0 GM	A606514
DE 02833	0.005	0.13	0.1	0.22	2.5	0.2	0	3	1.7	GROUP 1DX - 15.0 GM	A606514
DE 02834	0.004	0.1	0.2	0.1	1.9	0.2	0	4	1.7	GROUP 1DX - 15.0 GM	A606514
DE 02835	0.006	0.09	0.1	0.04	1.5	0.2	0	5	1.5	GROUP 1DX - 15.0 GM	A606514
DE 02836	0.004	0.11	0.1	0.02	2	0.2	0	5	1.5	GROUP 1DX - 15.0 GM	A606514
DE 02837	0.006	0.11	0.1	0.04	0.8	0.2	0	3	1.1	GROUP 1DX - 15.0 GM	A606514



SAMPLES	GPS ID	Datum	Easting	Northing	Date Time	Elevation	Mo	Cu	Pb	Zn	Ag	Ni	Co
DE 02883	DE02883	NAD83-9V	404167	6945475	10/08/2006 10:12	1152.8	5.4	92.3	13.1	220	0.5	58.2	13.5
DE 02884	DE02884	NAD83-9V	404069	6945449	10/08/2006 10:36	1158.5	5.6	81.5	12	190	0.3	38	9.2
DE 02885	DE02885	NAD83-9V	403966	6945438	10/08/2006 10:46	1165.9	3.2	74.1	8.4	167	0.8	39.1	8.1
DE 02886	DE02886	NAD83-9V	403874	6945400	10/08/2006 10:55	1162.5	2.9	69.6	8.9	191	0.8	43.4	7.9
DE 02887	DE02887	NAD83-9V	403775	6945368	10/08/2006 11:06	1172.6	4.8	121.4	12	209	0.7	57.2	12
DE 02888	DE02888	NAD83-9V	403672	6945350	10/08/2006 11:16	1170.1	2.7	53.7	8	112	0.3	25.5	6.4
DE 02889	DE02889	NAD83-9V	403600	6945276	10/08/2006 11:26	1161.3	1	22.4	3.2	34	0.5	13.8	2.8
DE 02890	DE02890	NAD83-9V	403504	6945240	10/08/2006 11:33	1163.4	4.6	52.2	12.8	119	0.2	18.1	6.5
DE 02891	DE02891	NAD83-9V	403413	6945178	10/08/2006 11:44	1158.5	4.6	58.8	8.1	166	0.6	36.5	8.4
DE 02892	DE02892	NAD83-9V	403339	6945112	10/08/2006 11:54	1154.9	4.8	61.3	11.1	123	0.3	27.5	7.9
DE 02893	DE02893	NAD83-9V	403271	6945038	10/08/2006 12:05	1157.9	5.4	49.9	10.7	119	0.1	23.9	9.6
DE 02894	DE02894	NAD83-9V	403203	6944963	10/08/2006 12:14	1144.5	2.9	33.3	6.7	71	0.5	12.2	2.4
DE 02895	DE02895	NAD83-9V	403141	6944884	10/08/2006 12:23	1144.8	2.9	32.7	10.3	74	0.2	12.1	3.4
DE 02896	DE02896	NAD83-9V	403067	6944818	10/08/2006 12:40	1144.2	5	63.9	10.3	164	0.8	36.6	9.3
DE 02897	DE02897	NAD83-9V	402988	6944751	10/08/2006 12:53	1140.9	3.9	42.4	9.2	103	0.5	16.5	4.6
DE 02898	DE02898	NAD83-9V	402930	6944664	10/08/2006 13:02	1152.8	5.7	89.6	11.9	212	0.5	49.6	11.1
DE 02900	DE02900	NAD83-9V	402820	6944536	10/08/2006 13:21	1146.7	3.9	45.3	7.6	119	0.7	20.8	6.3
DE 02911	DE02911	NAD83-9V	405158	6945893	10/08/2006 10:19	1179.6	5.8	72.5	14.1	178	0.7	25.4	6.2
DE 02912	DE02912	NAD83-9V	405145	6945925	10/08/2006 10:37	1188.1	3.1	121.3	12.8	89	0	41.2	14.2
DE 02913	DE02913	NAD83-9V	405124	6945968	10/08/2006 10:49	1187.5	3.5	56.6	9.7	74	0	25.4	16.7
DE 02914	DE02914	NAD83-9V	405111	6945991	10/08/2006 10:58	1181.1	3.2	26.1	10	81	0.2	12	4.1
DE 02915	DE02915	NAD83-9V	405099	6946013	10/08/2006 11:05	1167.7	1.4	9	5	29	0.1	5.2	1.1
DE 02916	DE02916	NAD83-9V	405090	6946039	10/08/2006 11:13	1160.4	1.4	11.8	3.6	29	0	5.3	1.1
DE 02917	DE02917	NAD83-9V	405080	6946063	10/08/2006 11:26	1157.6	2.1	37.2	9.5	111	0.1	22.5	8.9
DE 02918	DE02918	NAD83-9V	405058	6946106	10/08/2006 11:35	1179.3	2.9	34.7	10.2	91	0	18	5.3
DE 02919	DE02919	NAD83-9V	405036	6946155	10/08/2006 11:45	1202.1	0.9	29.5	4.4	27	0	13	4.3
DE 02920	DE02920	NAD83-9V	405216	6946245	10/08/2006 11:59	1209.4	2.5	48.4	8.4	67	0	20.6	6.7
DE 02921	DE02921	NAD83-9V	405258	6946215	10/08/2006 12:26	1204.6	0.3	13.7	2.3	12	0	5	2.2
DE 02922	DE02922	NAD83-9V	405270	6946168	10/08/2006 12:38	1195.4	1.5	12.6	1.7	20	0	10.4	1.6
DE 02923	DE02923	NAD83-9V	405283	6946146	10/08/2006 12:48	1179	3.7	91.4	10.9	143	0.3	38.5	9.4
DE 02924	DE02924	NAD83-9V	405291	6946123	10/08/2006 12:57	1164.6	3	34.5	7.9	67	0.1	19.8	5.8
DE 02925	DE02925	NAD83-9V	405296	6946099	10/08/2006 13:04	1162.2	2.4	24.4	6.7	55	0	14.4	3.1
DE 02926	DE02926	NAD83-9V	405306	6946075	10/08/2006 13:12	1170.4	3.9	47.1	10.6	81	0.2	26.5	5.5
DE 02927	DE02927	NAD83-9V	405324	6946027	10/08/2006 13:21	1182.9	1.8	38.9	9	64	0	11.6	2.9
DE 02928	DE02928	NAD83-9V	405345	6945987	10/08/2006 13:36	1169.2	4.5	82.8	25.6	169	0.3	32.1	13.4
DE 02929	DE02929	NAD83-9V	405400	6945869	10/08/2006 13:48	1144.2	2.7	33	11.6	116	0.2	14.3	5
DE 02930	DE02930	NAD83-9V	405449	6945779	10/08/2006 13:56	1124.7	2.4	39.9	15.3	133	0	24.4	14.2
DE 02931	DE02931	NAD83-9V	405489	6945692	10/08/2006 14:08	1110.4	3.7	26.9	8.6	132	0.2	19.1	8.7
DE 02932	DE02932	NAD83-9V	405536	6945600	10/08/2006 14:19	1090.9	3.3	81.6	9.1	129	1.1	36.6	8.5
DE 02933	DE02933	NAD83-9V	405576	6945508	10/08/2006 14:38	1084.2	3.4	23.6	8.6	98	0.4	15.4	4.7
DE 02934	DE02934	NAD83-9V	405623	6945419	10/08/2006 14:48	1083.9	1.2	20.2	6.6	18	0.9	3.3	0.6
DE 02935	DE02935	NAD83-9V	405671	6945328	10/08/2006 15:01	1074.7	3	14.7	7.9	55	0.3	8.1	1.8
DE 02936	DE02936	NAD83-9V	405719	6945236	10/08/2006 15:12	1062.2	3.3	26.7	6.5	58	0.4	11.8	1.7
DE 02937	DE02937	NAD83-9V	405770	6945152	10/08/2006 15:23	1062.2	5.5	65.8	11.9	195	0.5	30	6.2
DE 02938	DE02938	NAD83-9V	405816	6945063	10/08/2006 15:31	1047	5.4	50.7	11.5	156	0.4	23.6	5.1
DE 02939	DE02939	NAD83-9V	405865	6944979	10/08/2006 15:40	1029	3.5	28.3	11.2	93	0.3	14.3	3.3
DE 02940	DE02940	NAD83-9V	405917	6944887	10/08/2006 15:49	1021.4	4.9	72.2	9.9	185	0.4	31.1	8.6
DE 02941	DE02941	NAD83-9V	405958	6944804	10/08/2006 16:00	1008.9	5.1	77.3	9.6	206	0.6	40.2	6
DE 02951	DE02951	NAD83-9V	406270	6948451	10/08/2006 13:50	1337.2	9.9	66.6	7.9	193	0	45.5	9
DE 02952	DE02952	NAD83-9V	406309	6948421	10/08/2006 13:56	1324.1	5.5	57.4	10.3	132	0	25.6	6.3
DE 02953	DE02953	NAD83-9V	406346	6948381	10/08/2006 14:04	1302.1	3.6	41.1	7.4	86	0.1	22	4.3
DE 02954	DE02954	NAD83-9V	406388	6948359	10/08/2006 14:11	1297.2	7.7	65.4	11.1	335	0.3	53.8	7.3
DE 02955	DE02955	NAD83-9V	406475	6948306	10/08/2006 14:19	1290.8	6.7	36.7	11.6	162	0.2	24.3	5.5
DE 02994	DE02994	NAD83-9V	402301	6943799	10/08/2006 14:56	1168.6	2.7	25.4	8.9	82	0.3	13.7	3.6
DE 02995	DE02995	NAD83-9V	402241	6943719	10/08/2006 15:05	1167.7	3.8	34.5	7.6	112	0	20.5	3.9
DE 02996	DE02996	NAD83-9V	402182	6943637	10/08/2006 15:13	1176.8	4.7	50.8	14.4	121	0.1	23.6	9.3
DE 02997	DE02997	NAD83-9V	402122	6943555	10/08/2006 15:22	1173.5	0.8	17.8	3.5	31	0.3	7.9	1.6

SAMPLES	Mn	Fe	As	U	Au	Th	Sr	Cd	Sb	Bi	V	Ca	P	La	Cr	Mg	Ba	Ti	B	Al
DE 02883	680	2.65	9	3	6.6	3.5	49	2.1	2.6	0.2	89	0.13	0.124	10	22	0.28	566	0.005	7	1.14
DE 02884	551	2.67	9.8	3.1	8.1	3.1	28	0.4	2.6	0.2	103	0.04	0.097	10	23	0.3	471	0.004	4	1.44
DE 02885	699	2.33	6.4	2.8	8.6	1	54	0.9	1.6	0.2	92	0.39	0.133	11	27	0.39	553	0.005	7	1.53
DE 02886	602	2.26	5.9	2.4	11	1.4	64	1.1	1.4	0.2	88	0.53	0.13	8	26	0.41	465	0.006	10	1.61
DE 02887	873	3.61	10.1	3.4	13.9	2.3	65	0.4	2	0.2	129	0.41	0.153	8	45	0.57	507	0.006	10	2.21
DE 02888	352	1.87	4.6	2.3	8	1.3	41	0.4	0.9	0.2	100	0.19	0.121	8	26	0.23	502	0.004	5	1.33
DE 02889	264	0.87	2.3	0.7	3.1	0	29	0.5	0.3	0.1	26	0.21	0.081	3	9	0.1	358	0.007	3	0.64
DE 02890	369	2.14	7.3	1.1	3.8	0.4	20	0.2	1.2	0.2	84	0.02	0.156	8	24	0.29	233	0.004	12	1.32
DE 02891	772	2.35	7	2.5	10	1.3	55	1.8	1.3	0.2	88	0.32	0.178	10	24	0.35	737	0.006	7	1.37
DE 02892	736	2.06	8.6	2.3	6.2	1.7	45	0.7	1.6	0.2	68	0.2	0.14	10	16	0.25	402	0.006	5	0.79
DE 02893	735	2.65	8.8	1.5	5.4	1.9	17	0.4	1.2	0.2	99	0.03	0.105	8	24	0.32	349	0.006	6	1.54
DE 02894	82	1.09	4	1.2	2.7	0.2	22	0.4	0.8	0.1	48	0.09	0.084	6	14	0.17	278	0.002	4	0.74
DE 02895	197	2.19	7.7	0.6	0.8	0.1	12	0.1	1	0.2	86	0.02	0.134	6	13	0.12	122	0.004	3	0.81
DE 02896	647	1.68	4.7	2.8	13.4	1.8	82	1.9	1.5	0.2	83	0.62	0.173	9	26	0.43	542	0.008	9	1.16
DE 02897	219	1.69	6.3	1.6	5.5	0.5	20	0.4	1.1	0.2	73	0.06	0.115	8	18	0.19	287	0.004	4	1.05
DE 02898	720	2.5	10.6	3	4.7	3.1	53	1	2.7	0.2	107	0.18	0.134	11	21	0.24	925	0.007	5	0.85
DE 02900	616	1.62	5.3	2.3	7.3	0.8	51	1.4	1	0.2	74	0.33	0.123	7	19	0.26	370	0.004	4	1.18
DE 02911	366	2.85	9	0.8	2.7	1.8	59	0.5	2.1	0.3	91	0.06	0.207	8	18	0.17	968	0.009	4	1.01
DE 02912	1162	3.94	5.8	0.3	0	0.2	12	0.3	1.2	0.4	72	0.03	0.071	7	18	0.02	168	0.015	2	0.38
DE 02913	2218	3.35	11	0.4	0.9	0.5	8	0.1	1.3	0.3	86	0	0.063	6	19	0.05	115	0.01	2	0.72
DE 02914	453	1.79	6.6	0.6	1.2	0.8	9	0.1	1.3	0.2	73	0.01	0.056	6	12	0.08	127	0.008	2	0.62
DE 02915	48	0.67	2.8	0.3	0	0.2	5	0.1	0.4	0.1	37	0.01	0.019	8	8	0.03	87	0.008	2	0.39
DE 02916	43	0.56	2.6	0.2	1.4	0	6	0.1	0.3	0.1	29	0.01	0.025	6	7	0.04	74	0.006	3	0.31
DE 02917	692	2.1	6.7	0.8	5.4	1	13	0.5	1	0.2	50	0.03	0.082	6	15	0.16	200	0.007	3	0.81
DE 02918	357	2.93	9.1	0.6	0.6	1.8	9	0.1	1.4	0.2	72	0.01	0.069	7	16	0.12	122	0.011	3	0.89
DE 02919	309	1.17	3	0.1	0	0.3	4	0	0.4	0.1	33	0.01	0.025	4	7	0.02	44	0.019	1	0.17
DE 02920	970	2.29	6.9	0.4	4.1	0.2	11	0.1	1	0.2	45	0.02	0.05	6	16	0.05	114	0.008	1	0.53
DE 02921	263	0.5	0.9	0.1	0	0	6	0.2	0.2	0	11	0.03	0.026	1	4	0.01	49	0.007	0	0.15
DE 02922	88	0.81	1.1	0.1	0	0	6	0.2	0.3	0	16	0.02	0.027	2	11	0.01	33	0.011	0	0.14
DE 02923	497	2.53	9.9	2.1	5.3	3	45	0.3	1.8	0.2	75	0.31	0.099	11	21	0.5	267	0.01	2	1.11
DE 02924	467	1.82	6.1	0.5	1	0.1	9	0.1	1	0.2	52	0.02	0.083	5	13	0.04	116	0.004	2	0.47
DE 02925	159	1.47	6.2	0.3	0.7	0.1	7	0.1	0.8	0.2	55	0.01	0.047	8	10	0.04	81	0.008	2	0.35
DE 02926	260	2.51	11.6	0.5	0	0.6	11	0	1.2	0.2	77	0.01	0.072	6	14	0.06	122	0.009	1	0.6
DE 02927	194	1.89	5.5	0.4	1	1	9	0.1	1	0.2	55	0.01	0.057	6	10	0.04	88	0.014	1	0.47
DE 02928	717	4.28	9	1.1	2.8	2.7	28	0.5	1.9	0.3	70	0.03	0.153	6	20	0.28	285	0.004	3	1.21
DE 02929	255	3.27	8.5	0.5	3.1	1.7	12	0.4	1.4	0.3	64	0.03	0.084	9	16	0.15	148	0.015	3	0.87
DE 02930	409	3.61	3.2	0.7	13.8	2.7	36	0.3	0.7	0.3	42	0.25	0.043	10	25	0.69	432	0.009	4	1.4
DE 02931	426	2.35	11.1	0.8	3.6	2.4	28	0.4	1.5	0.2	64	0.14	0.026	11	18	0.3	261	0.014	3	0.79
DE 02932	524	2.23	6.2	3.8	11.8	1.9	55	1	1.1	0.2	59	0.44	0.097	10	20	0.36	390	0.006	2	1.26
DE 02933	587	1.86	7.2	0.9	4.4	0.9	18	0.4	1.2	0.1	93	0.05	0.106	6	19	0.14	185	0.006	3	1.07
DE 02934	28	0.48	2.3	0.6	0.5	0.1	13	1.4	0.3	0.1	27	0.03	0.053	7	10	0.03	300	0.007	0	0.86
DE 02935	110	1.42	8.1	0.6	0.9	0.2	15	0.2	0.9	0.2	83	0.02	0.096	5	13	0.07	157	0.009	1	0.69
DE 02936	116	0.77	3.7	1.4	3.5	0.1	15	0.7	0.9	0.1	58	0.04	0.046	5	16	0.07	242	0.004	3	0.66
DE 02937	322	2.48	11.4	2.5	10.7	2.1	27	0.7	2.6	0.2	112	0.06	0.091	8	24	0.24	319	0.004	4	1.16
DE 02938	231	2.38	10.3	2.2	12.4	3	24	0.3	2.2	0.2	116	0.02	0.071	8	28	0.25	245	0.004	5	1.26
DE 02939	216	1.95	8	0.9	1	0.4	10	0.1	1.3	0.3	89	0.01	0.071	10	17	0.08	144	0.008	3	0.72
DE 02940	665	2.31	11.4	3.4	6.6	2.1	27	1.3	2.5	0.2	89	0.1	0.101	11	22	0.25	343	0.007	4	0.96
DE 02941	491	2.07	9.2	3.6	4.8	1.8	42	1.1	2.8	0.2	101	0.16	0.103	11	23	0.27	566	0.008	6	0.9
DE 02951	172	2.2	6.9	0.5	1.3	0.2	13	0.1	1	0.4	58	0.01	0.047	12	20	0.05	89	0.005	2	0.6
DE 02952	193	2.4	8.9	0.7	0	0.4	10	0.2	1.2	0.3	51	0.02	0.052	7	14	0.06	121	0.011	2	0.71
DE 02953	93	1.28	5.9	0.7	0	0.1	7	0.1	0.9	0.2	48	0.01	0.042	8	17	0.03	74	0.006	1	0.54
DE 02954	554	2.15	7.7	3.5	7.7	0.5	38	1.2	2.3	0.2	62	0.19	0.15	7	15	0.18	329	0.004	4	0.99
DE 02955	252	2.18	9.3	1.6	4.3	0.4	12	0.3	1.9	0.2	108	0.02	0.117	8	25	0.16	193	0.005	3	0.83
DE 02994	234	1.51	6.5	1	2.5	0.4	14	0.2	0.9	0.2	71	0.03	0.078	10	18	0.18	227	0.005	6	0.93
DE 02995	193	1.82	7.2	1.1	5.1	0.9	17	0.4	1.5	0.2	73	0.04	0.068	10	20	0.23	278	0.005	5	0.98
DE 02996	767	2.84	9.6	1.3	7.3	1.2	21	0.2	1.4	0.3	74	0.03	0.132	9	22	0.29	254	0.004	4	1.19
DE 02997	88	0.78	1.5	0.7	1	0.1	17	0.6	0.2	0.1	27	0.11	0.057	6	9	0.07	187	0.006	1	0.5

SAMPLES	Na	K	W	Hg	Sc	Tl	S	Ga	Se	Analysis	Acme file
DE 02883	0.003	0.25	0	0.43	3.3	0.2	0	4	2.6	GROUP 1DX - 15.0 GM	A606514
DE 02884	0.002	0.17	0	0.31	3.2	0.2	0	4	2	GROUP 1DX - 15.0 GM	A606514
DE 02885	0.009	0.22	0.1	0.27	2.6	0.2	0	5	1.8	GROUP 1DX - 15.0 GM	A606514
DE 02886	0.008	0.24	0.1	0.36	2.7	0.3	0	5	2.9	GROUP 1DX - 15.0 GM	A606514
DE 02887	0.006	0.37	0.1	0.31	5.5	0.3	0.07	6	3.9	GROUP 1DX - 15.0 GM	A606514
DE 02888	0.004	0.21	0.1	0.21	2.4	0.2	0	5	1.7	GROUP 1DX - 15.0 GM	A606514
DE 02889	0.022	0.08	0	0.08	0.3	0.1	0	2	0.7	GROUP 1DX - 15.0 GM	A606514
DE 02890	0.006	0.3	0	0.06	0.7	0.3	0	6	0.9	GROUP 1DX - 15.0 GM	A606514
DE 02891	0.006	0.21	0.1	0.25	2.1	0.3	0	4	2.5	GROUP 1DX - 15.0 GM	A606514
DE 02892	0.003	0.16	0.1	0.18	2.1	0.2	0	3	1.7	GROUP 1DX - 15.0 GM	A606514
DE 02893	0.004	0.16	0.3	0.07	2.1	0.2	0.06	5	1.4	GROUP 1DX - 15.0 GM	A606514
DE 02894	0.009	0.13	0.1	0.08	0.3	0.1	0.06	4	1	GROUP 1DX - 15.0 GM	A606514
DE 02895	0.005	0.11	0.1	0.03	0.3	0.2	0	6	1.1	GROUP 1DX - 15.0 GM	A606514
DE 02896	0.005	0.26	0.1	0.37	2.8	0.3	0.06	4	3.9	GROUP 1DX - 15.0 GM	A606514
DE 02897	0.008	0.14	0.1	0.11	0.8	0.2	0.07	5	1.9	GROUP 1DX - 15.0 GM	A606514
DE 02898	0.003	0.17	0.1	0.35	3.1	0.2	0	4	1.6	GROUP 1DX - 15.0 GM	A606514
DE 02900	0.009	0.17	0.1	0.16	1.2	0.2	0.07	4	2	GROUP 1DX - 15.0 GM	A606514
DE 02911	0.003	0.23	0.1	0.05	1.7	0.2	0	5	3.2	GROUP 1DX - 15.0 GM	A606514
DE 02912	0.007	0.04	0.1	0.01	1.2	0.1	0	5	0.5	GROUP 1DX - 15.0 GM	A606514
DE 02913	0.003	0.07	0.1	0.02	1.4	0.2	0	7	1.2	GROUP 1DX - 15.0 GM	A606514
DE 02914	0.004	0.07	0.1	0.02	0.8	0.2	0	4	1.1	GROUP 1DX - 15.0 GM	A606514
DE 02915	0.003	0.07	0.1	0.01	0.3	0.1	0	4	0	GROUP 1DX - 15.0 GM	A606514
DE 02916	0.005	0.08	0.1	0.01	0.2	0.1	0	4	0	GROUP 1DX - 15.0 GM	A606514
DE 02917	0.003	0.09	0.1	0.02	1.4	0.1	0	3	0.9	GROUP 1DX - 15.0 GM	A606514
DE 02918	0.002	0.06	0.1	0.02	1.6	0.1	0	5	0.8	GROUP 1DX - 15.0 GM	A606514
DE 02919	0.01	0.02	0.1	0	0.6	0	0	3	0	GROUP 1DX - 15.0 GM	A606514
DE 02920	0.003	0.06	0.1	0.01	0.9	0.1	0	3	1	GROUP 1DX - 15.0 GM	A606514
DE 02921	0.016	0.02	0.1	0.01	0.1	0	0	1	0	GROUP 1DX - 15.0 GM	A606514
DE 02922	0.016	0.03	0.1	0.01	0.3	0	0.09	1	0	GROUP 1DX - 15.0 GM	A606514
DE 02923	0.004	0.14	0.1	0.14	3	0.1	0	4	1.7	GROUP 1DX - 15.0 GM	A606514
DE 02924	0.005	0.07	0.1	0.03	0.4	0.1	0	4	0.9	GROUP 1DX - 15.0 GM	A606514
DE 02925	0.003	0.07	0.1	0.02	0.4	0.1	0	5	0.5	GROUP 1DX - 15.0 GM	A606514
DE 02926	0.003	0.09	0.1	0.03	1.1	0.1	0	7	1.1	GROUP 1DX - 15.0 GM	A606514
DE 02927	0.004	0.06	0.1	0.01	1.1	0.1	0.08	5	0.7	GROUP 1DX - 15.0 GM	A606514
DE 02928	0.002	0.18	0.1	0.04	2.9	0.2	0	4	2.6	GROUP 1DX - 15.0 GM	A606514
DE 02929	0.003	0.14	0.1	0.02	1.5	0.2	0.08	6	0.9	GROUP 1DX - 15.0 GM	A606514
DE 02930	0.004	0.23	0	0.06	2.3	0.1	0	6	1.1	GROUP 1DX - 15.0 GM	A606514
DE 02931	0.004	0.15	0.1	0.07	1.6	0.2	0.06	4	1.2	GROUP 1DX - 15.0 GM	A606514
DE 02932	0.006	0.12	0.1	0.86	3	0.2	0.07	4	2.1	GROUP 1DX - 15.0 GM	A606514
DE 02933	0.004	0.1	0.1	0.05	1.3	0.2	0	4	1.2	GROUP 1DX - 15.0 GM	A606514
DE 02934	0.01	0.05	0	0.08	0.3	0.1	0	5	0.7	GROUP 1DX - 15.0 GM	A606514
DE 02935	0.005	0.07	0.1	0.05	0.6	0.2	0	4	0.9	GROUP 1DX - 15.0 GM	A606514
DE 02936	0.009	0.08	0	0.07	0.3	0.2	0	3	1	GROUP 1DX - 15.0 GM	A606514
DE 02937	0.003	0.13	0.1	0.21	2	0.3	0	4	1.5	GROUP 1DX - 15.0 GM	A606514
DE 02938	0.002	0.15	0.1	0.14	2.1	0.3	0	4	1.9	GROUP 1DX - 15.0 GM	A606514
DE 02939	0.004	0.11	0.1	0.03	0.7	0.2	0	5	1.1	GROUP 1DX - 15.0 GM	A606514
DE 02940	0.003	0.12	0.1	0.22	2.4	0.2	0	3	1.5	GROUP 1DX - 15.0 GM	A606514
DE 02941	0.005	0.17	0.1	0.32	2.4	0.2	0	3	1.4	GROUP 1DX - 15.0 GM	A606514
DE 02951	0.004	0.07	0.1	0.02	0.6	0.1	0	6	0	GROUP 1DX - 15.0 GM	A606514
DE 02952	0.008	0.06	0.1	0.03	1.3	0.1	0	5	1	GROUP 1DX - 15.0 GM	A606514
DE 02953	0.01	0.04	0.1	0.03	0.3	0.1	0	4	0	GROUP 1DX - 15.0 GM	A606514
DE 02954	0.009	0.15	0.1	0.09	1.8	0.1	0	3	1.6	GROUP 1DX - 15.0 GM	A606514
DE 02955	0.003	0.12	0.1	0.05	0.8	0.2	0	4	1.2	GROUP 1DX - 15.0 GM	A606514
DE 02994	0.004	0.19	0.1	0.06	0.8	0.2	0	5	0.6	GROUP 1DX - 15.0 GM	A606514
DE 02995	0.003	0.17	0.1	0.04	1.3	0.2	0	4	0	GROUP 1DX - 15.0 GM	A606514
DE 02996	0.003	0.16	0.1	0.06	1.4	0.2	0	5	0	GROUP 1DX - 15.0 GM	A606514
DE 02997	0.016	0.06	0	0.04	0.3	0.1	0	2	0	GROUP 1DX - 15.0 GM	A606514

SAMPLES	GPS ID	Datum	Easting	Northing	Date Time	Elevation	Mo	Cu	Pb	Zn	Ag	Ni	Co
DE 02998	DE02998	NAD83-9V	402058	6943474	10/08/2006 15:31	1171.3	2.6	49.2	7.4	142	0.5	31.6	5.5

SAMPLES	Mn	Fe	As	U	Au	Th	Sr	Cd	Sb	Bi	V	Ca	P	La	Cr	Mg	Ba	Ti	B	Al
DE 02998	570	1.99	6	2	7.5	1.3	36	0.6	1.2	0.2	65	0.23	0.093	9	21	0.3	470	0.007	6	1.26

SAMPLES	Na	K	W	Hg	Sc	Tl	S	Ga	Se	Analysis	Acme file
DE 02998	0.012	0.18	0.1	0.22	2.1	0.2	0	4	2	GROUP 1DX - 15.0 GM	A606514

SAMPLES	GPS ID	Datum	Easting	Northing	Date Time	Elevation	Mo	Cu	Pb	Zn	Ag	Ni
GN-7012	GN07012	NAD83-9V	447221	6961767	14/07/2006 9:59	1531.9	18	272.9	76.4	276	2.4	114.7
GN-7013	GN07013	NAD83-9V	447179	6961799	14/07/2006 10:06	1528	9	95.2	33.1	85	0.6	19
GN-7014	GN07014	NAD83-9V	447181	6961853	14/07/2006 10:14	1508.8	2.6	366.4	9.1	525	0.4	133.9
GN-7015	GN07015	NAD83-9V	447161	6961895	14/07/2006 10:22	1509.7	5.8	145.3	45.6	226	0.3	31.7
GN-7016	GN07016	NAD83-9V	447125	6961991	14/07/2006 10:37	1498.1	8.4	85.5	44.8	124	0.5	21.6
GN-7017	GN07017	NAD83-9V	447106	6962039	14/07/2006 10:43	1512.1	7.3	90	39.3	96	0.7	17.2
GN-7018	GN07018	NAD83-9V	447087	6962093	14/07/2006 10:48	1506.3	13.1	105	63.5	129	0.9	20.5
GN-7019	GN07019	NAD83-9V	447068	6962135	14/07/2006 10:59	1496.3	15.9	83.6	61.7	144	0.8	24.4
GN-7020	GN07020	NAD83-9V	447054	6962178	14/07/2006 11:07	1486.2	5.9	50.8	47.4	98	0.5	17.2
GN-7251	GN07251	NAD83-9V	445993	6961548	14/07/2006 9:57	1465.8	18.3	46.7	19.3	225	1	63
GN-7252	GN07252	NAD83-9V	445991	6961599	14/07/2006 10:07	1441.4	12.5	40.6	22.4	124	1.4	29.4
GN-7253	GN07253	NAD83-9V	445978	6961648	14/07/2006 10:16	1436.2	10.3	68.7	23.5	129	1.3	33.4
GN-7254	GN07254	NAD83-9V	445986	6961698	14/07/2006 10:25	1419.8	6.2	40.1	15.2	81	0.6	17.1
GN-7255	GN07255	NAD83-9V	446005	6961746	14/07/2006 10:35	1417.6	12.6	95	29	248	0.8	74.8
GN-7256	GN07256	NAD83-9V	446019	6961795	14/07/2006 10:46	1404.8	12.6	69.6	28.2	146	1.4	43
GN-7257	GN07257	NAD83-9V	446036	6961842	14/07/2006 10:56	1382.9	8.8	57.1	21.9	109	1	28.5
GN-7258	GN07258	NAD83-9V	446030	6961892	14/07/2006 11:06	1376.5	14.2	45	18	155	0.8	49.4
GN-7259	GN07259	NAD83-9V	446010	6961940	14/07/2006 11:14	1371.3	6.2	32.4	18.7	140	0.7	45.2
GN-7260	GN07260	NAD83-9V	446007	6961990	14/07/2006 11:30	1360.6	11.3	109.8	19.4	189	1	61
GN-7261	GN07261	NAD83-9V	445999	6962041	14/07/2006 11:39	1361.2	8.8	55.4	18.7	220	0.6	40.9
GN-7262	GN07262	NAD83-9V	446005	6962091	14/07/2006 11:48	1354.2	2.2	32.4	4.7	116	0.7	30.8
GN-7263	GN07263	NAD83-9V	445999	6962141	14/07/2006 11:56	1354.2	7.5	50.9	15.8	100	0.3	23
GN-7264	GN07264	NAD83-9V	445995	6962192	14/07/2006 12:09	1345.1	11.4	70.5	23.8	127	1.4	28.5
GN-7265	GN07265	NAD83-9V	445997	6962242	14/07/2006 12:19	1344.2	41.2	212.1	18.8	626	2.9	159.1
GN-7266	GN07266	NAD83-9V	445985	6962292	14/07/2006 12:29	1346.3	5.7	88.7	27	144	0.4	56.1
GN-7267	GN07267	NAD83-9V	445983	6962343	14/07/2006 12:59	1353	11	56.1	20	132	0.3	26.9
GN-7268	GN07268	NAD83-9V	445966	6962392	14/07/2006 13:07	1342.9	7.3	40.9	15.2	247	0.3	34
GN-7269	GN07269	NAD83-9V	445939	6962434	14/07/2006 13:15	1342.6	7.5	46.4	14.9	204	1.5	28.4
GN-7270	GN07270	NAD83-9V	445916	6962479	14/07/2006 13:22	1342	10.5	57	55.7	414	0.8	51.7
GN-7271	GN07271	NAD83-9V	445873	6962508	14/07/2006 13:30	1341.7	6.1	28.4	18.1	65	0.2	13.5
GN-7272	GN07272	NAD83-9V	445847	6962554	14/07/2006 13:39	1339.6	11	43	44.1	89	0.7	18.3
GN-7273	GN07273	NAD83-9V	445833	6962602	14/07/2006 13:47	1336.5	3.6	46	9.1	67	1.4	15
GN-7274	GN07274	NAD83-9V	445793	6962634	14/07/2006 13:58	1335	7.2	32.4	22.3	76	0.7	16
GN-7275	GN07275	NAD83-9V	445807	6962683	14/07/2006 14:17	1329.8	8.4	55.1	17.9	114	0.7	22.3
GN-7276	GN07276	NAD83-9V	445796	6962733	14/07/2006 14:28	1328	3.6	16.7	9.4	47	0.3	8.5
GN-7277	GN07277	NAD83-9V	445798	6962784	14/07/2006 14:36	1322.5	8.7	58.2	16.4	140	0.7	31.6
GN-7278	GN07278	NAD83-9V	445748	6962796	14/07/2006 14:46	1323.1	3.2	12.7	6.7	40	0.2	7.6
GN-7279	GN07279	NAD83-9V	445700	6962780	14/07/2006 14:58	1320.4	3.9	29.1	9.4	76	0.5	13.1
GN-7280	GN07280	NAD83-9V	445650	6962768	14/07/2006 15:05	1320.4	8	111.7	22.9	331	1.4	62.9
GN-7281	GN07281	NAD83-9V	445598	6962768	14/07/2006 15:16	1319.5	10	78.1	20.5	415	0.9	71.8
GN-7282	GN07282	NAD83-9V	445558	6962801	14/07/2006 15:25	1321.3	6.9	63.1	12.6	220	0.8	43.5
GN-7351	GN07351	NAD83-9V	444827	6961365	14/07/2006 10:11	1492	14	58.9	40.9	74	1.4	14.1
GN-7352	GN07352	NAD83-9V	444784	6961373	14/07/2006 10:33	1493.8	15.8	163.2	19.6	133	1.8	30.3
GN-7353	GN07353	NAD83-9V	444750	6961430	14/07/2006 10:36	1496.3	7.6	48.2	16.2	83	0.7	13.8
GN-7354	GN07354	NAD83-9V	444721	6961480	14/07/2006 10:45	1513.6	2.9	27.6	13.6	31	0.4	4.9
GN-7355	GN07355	NAD83-9V	444700	6961526	14/07/2006 10:55	1499	19.6	90.2	47.3	159	1.9	30.1
GN-7356	GN07356	NAD83-9V	444681	6961574	14/07/2006 11:04	1500.8	14.9	78	27.7	145	1.4	28.5
GN-7357	GN07357	NAD83-9V	444660	6961628	14/07/2006 11:17	1498.7	9.3	44.9	12.6	87	0.8	16.1
GN-7358	GN07358	NAD83-9V	444639	6961677	14/07/2006 11:26	1505.1	9.2	34	15.7	70	0.8	13.2
GN-7359	GN07359	NAD83-9V	444627	6961726	14/07/2006 11:35	1492.3	7.1	45.6	26.8	66	0.4	14.4
GN-7360	GN07360	NAD83-9V	444598	6961770	14/07/2006 11:46	1483.8	13.7	68.6	34.2	106	1	35.6
GN-7361	GN07361	NAD83-9V	444580	6961825	14/07/2006 11:54	1496.6	9.7	42.6	12.6	132	0.4	26.3
GN-7362	GN07362	NAD83-9V	444585	6961879	14/07/2006 12:08	1473.7	2.5	20	6.3	43	0.2	8.4
GN-7363	GN07363	NAD83-9V	444565	6961929	14/07/2006 12:18	1473.1	5.3	90.9	14	121	0.3	20.6
GN-7364	GN07364	NAD83-9V	444547	6961978	14/07/2006 12:29	1465.2	5.3	46.5	9.9	103	0.4	17
GN-7365	GN07365	NAD83-9V	444532	6962031	14/07/2006 12:38	1459.4	10	65.5	28.5	134	0.8	29.9
GN-7366	GN07366	NAD83-9V	444524	6962085	14/07/2006 12:51	1442.6	6.9	39.1	17	118	0.3	22.4

SAMPLES	Co	Mn	Fe	As	U	Au	Th	Sr	Cd	Sb	Bi	V	Ca	P	La	Cr	Mg	Ba
GN-7012	55	6740	6.28	54	9.2	12	4.1	114	4.6	8.8	0.6	118	0.09	0.428	25	32	0.23	241
GN-7013	25.5	3333	6.03	27.6	4.3	6	0.7	44	0.3	4.5	0.4	67	0.05	0.252	15	21	0.13	698
GN-7014	251.6	50000	31.31	31.2	1.4	2.6	1.1	7	7.3	1.5	0.1	11	0.01	0.168	5	4	0.02	3918
GN-7015	10.5	510	6.8	34.2	3.1	9.3	5.7	44	0.2	5.8	0.4	41	0.02	0.13	17	21	0.15	670
GN-7016	9.3	671	5.15	38.6	3.8	11.6	1.4	47	0.3	5.9	0.4	55	0.02	0.196	18	26	0.25	673
GN-7017	6.5	754	4.52	33.1	3.5	10.7	1.8	42	0.2	5.4	0.4	50	0.05	0.21	17	21	0.21	584
GN-7018	5.7	270	5.88	45.5	6.1	9.9	3.5	88	0.3	6.8	0.5	71	0.02	0.216	26	23	0.18	548
GN-7019	6.6	653	6.65	66.9	6.3	8.3	1.7	130	0.3	7.7	0.6	87	0.03	0.3	27	26	0.17	204
GN-7020	4	280	6.1	52	3.4	7.6	1.7	54	0.1	5.6	0.4	59	0.01	0.259	19	26	0.19	1039
GN-7251	5.8	563	6.49	37.7	8.9	2.8	0.8	132	1.6	8.6	0.3	78	0.39	0.59	10	20	0.18	1093
GN-7252	4.3	320	4.14	30	3.8	2.7	0.3	84	1.1	6.4	0.3	85	0.18	0.361	12	19	0.1	985
GN-7253	6.2	360	4.3	29.4	4.6	5.2	3.3	91	0.3	6.3	0.3	58	0.06	0.256	17	18	0.15	633
GN-7254	3.6	358	2.64	15.3	1.9	3.3	0.2	52	0.1	3	0.2	46	0.04	0.218	10	11	0.06	499
GN-7255	25.6	1252	6.79	39.6	3.3	4	1.6	89	2.2	8	0.5	74	0.32	0.343	16	30	0.28	914
GN-7256	14.2	977	5.98	37.2	4.2	5.9	1.1	71	0.5	7	0.4	81	0.21	0.408	15	22	0.14	687
GN-7257	8.4	808	4.09	25.8	5	3.1	0.4	74	0.5	3.9	0.3	50	0.36	0.288	10	14	0.1	532
GN-7258	28.3	3750	3.08	21.9	5.2	2.4	0.1	58	3	3.5	0.3	50	0.15	0.343	9	13	0.06	732
GN-7259	13.3	2396	2.71	18.9	16.9	4	0.4	74	1.8	2.3	0.3	48	0.44	0.333	11	15	0.15	533
GN-7260	13.6	1768	2.95	21.5	7.3	0	0.4	57	4.7	4.5	0.3	71	0.1	0.227	13	12	0.06	581
GN-7261	8	931	3.05	17.1	6.4	4.8	0.3	47	1.5	2.7	0.3	61	0.09	0.207	13	15	0.07	556
GN-7262	2.7	270	0.91	5.9	3.9	2.6	0.2	31	1	1.3	0.1	23	0.18	0.119	4	5	0.05	182
GN-7263	10.7	890	3.9	20.3	2.8	2.8	0.2	33	0.5	2.9	0.2	51	0.13	0.229	10	14	0.07	279
GN-7264	12.9	1087	5.13	32.6	4.4	3.7	0.9	93	0.4	4.9	0.3	77	0.17	0.401	13	20	0.13	1006
GN-7265	26.3	2406	3.71	46.7	17.9	6.5	1.9	69	7.2	19.4	0.3	181	0.26	0.346	19	33	0.14	679
GN-7266	17.6	493	5.54	24.7	2.2	10.4	0.3	11	0.4	2.8	0.6	39	0.04	0.241	10	30	0.47	298
GN-7267	6.7	511	4.13	21.1	2.4	3.8	0.1	22	0.5	3.5	0.3	52	0.06	0.222	11	15	0.07	302
GN-7268	1.9	62	2.58	11	4.3	2.6	2.8	31	1.3	1.8	0.3	68	0.13	0.127	18	20	0.26	608
GN-7269	3.7	173	2.48	12.9	5.7	4.3	0.3	41	0.9	2.8	0.3	63	0.11	0.187	13	18	0.16	530
GN-7270	60	3044	5.05	195.8	6.5	5.6	2	29	2.6	10.8	0.6	22	0.11	0.232	13	8	0.1	340
GN-7271	2.6	148	1.73	14.4	1.4	1.5	0.1	27	0.2	1.9	0.3	61	0.05	0.13	13	10	0.04	255
GN-7272	3.4	248	2.82	27.1	2.2	2.6	0.2	43	0.1	4.5	0.4	78	0.05	0.215	14	13	0.04	286
GN-7273	4.2	402	1.76	6.6	3.7	5.1	0.1	12	0.6	1.3	0.2	32	0.03	0.172	10	10	0.07	254
GN-7274	3.1	128	2.53	20.3	1.8	1.7	0.1	30	0.2	3.6	0.2	45	0.05	0.143	11	10	0.06	418
GN-7275	4.5	159	3.6	21.2	3.4	5.7	0.3	40	0.4	3.6	0.3	60	0.06	0.217	13	19	0.09	395
GN-7276	1.8	142	1	6.4	1.9	1.4	0	29	0.6	1.2	0.2	33	0.11	0.164	7	10	0.06	544
GN-7277	5.7	237	4.53	25.4	3.3	10.4	1	50	0.4	5.6	0.2	57	0.06	0.261	13	21	0.15	528
GN-7278	2.2	231	0.89	4.1	1.2	0	0.1	18	0.3	0.9	0.1	21	0.07	0.144	5	7	0.06	295
GN-7279	3.9	189	1.87	12.3	2.3	2.1	0.1	38	0.5	1.9	0.1	34	0.17	0.135	5	9	0.1	360
GN-7280	10.8	683	3.65	17.9	20.5	11.6	1.3	135	2.7	4.6	0.3	69	0.8	0.358	11	23	0.31	890
GN-7281	11.7	735	3.6	16.3	9.3	6.5	1.5	88	3.1	4.4	0.3	77	0.4	0.279	12	24	0.3	977
GN-7282	5.9	559	2.21	8.5	6.6	4.6	0.7	83	1.6	2.7	0.2	58	0.52	0.295	9	16	0.22	779
GN-7351	2.8	201	3.15	32.5	4.9	8.7	1.7	85	0.2	6.7	0.5	77	0.08	0.229	18	23	0.08	1744
GN-7352	3.7	175	4.27	20.5	7.3	7.8	1.6	108	0.4	6.1	0.4	126	0.04	0.248	15	51	0.21	2378
GN-7353	4.9	202	2.04	15.2	3.4	4.3	0.4	58	0.4	3	0.2	65	0.08	0.161	10	16	0.07	1076
GN-7354	1.8	97	0.77	6.8	2	5.5	0.2	46	0.4	1.3	0.2	27	0.06	0.132	8	7	0.03	1451
GN-7355	4.7	131	4.04	39.7	7.6	13.4	1.3	108	1.1	9.3	0.5	115	0.06	0.323	24	33	0.21	2059
GN-7356	6.6	307	4.19	30.2	7.1	10.1	0.8	91	0.6	6.7	0.3	96	0.07	0.329	16	28	0.2	1127
GN-7357	2.7	170	2.83	16.3	3.7	7.7	0.2	58	0.2	3.3	0.2	64	0.03	0.212	8	21	0.07	992
GN-7358	2.8	164	2.12	16.2	2.9	2.7	0.1	57	0.1	2.9	0.2	69	0.02	0.157	10	17	0.04	1127
GN-7359	6.2	465	3.05	25.7	2.5	4.6	0.4	74	0.2	3.2	0.2	32	0.08	0.155	11	7	0.04	420
GN-7360	6.8	693	4.71	33.1	8.1	4.3	0.5	118	0.4	3.8	0.4	141	0.1	0.444	13	29	0.06	662
GN-7361	3.3	97	2.4	13.2	2	1.6	0	37	1	2.3	0.2	87	0.02	0.152	8	21	0.04	472
GN-7362	1.5	32	0.95	4.1	0.6	0	0	11	0.1	0.6	0.1	32	0.02	0.064	2	8	0.02	103
GN-7363	3.8	93	3.14	12.6	1	2.4	0.2	17	0.2	2	0.2	60	0.02	0.1	8	14	0.03	192
GN-7364	3.4	66	2.03	9	0.9	1.4	0.1	21	0.2	1.8	0.2	54	0.01	0.093	8	10	0.02	244
GN-7365	4.8	158	3.13	20.4	2.8	1.5	0	59	0.5	3.3	0.3	71	0.02	0.209	11	17	0.04	625
GN-7366	4.5	114	2.88	17.3	1.5	4.2	0.1	38	0.2	2.7	0.3	68	0.02	0.146	11	14	0.05	383



SAMPLES	Ti	B	Al	Na	K	W	Hg	Sc	Tl	S	Ga	Se	Analysis	Acme file
GN-7012	0.012	4	1.87	0.011	0.27	0.2	0.58	4.5	1.1	0.6	5	6.5	GROUP 1DX - 15.00 GM	A604855
GN-7013	0.008	3	1.27	0.009	0.11	0.1	0.1	1.3	1.3	0.21	4	3.2	GROUP 1DX - 15.00 GM	A604855
GN-7014	0.008	1	0.61	0.004	0.05	0	0.06	1.1	3.1	0.28	3	1.8	GROUP 1DX - 15.00 GM	A604855
GN-7015	0.015	2	1.04	0.005	0.12	0.1	0.03	4	0.7	0.17	4	2.3	GROUP 1DX - 15.00 GM	A604855
GN-7016	0.007	1	1.6	0.004	0.12	0.1	0.08	1.6	0.5	0.21	5	2.7	GROUP 1DX - 15.00 GM	A604855
GN-7017	0.01	2	1.25	0.007	0.13	0.1	0.09	2	0.6	0.23	5	2.3	GROUP 1DX - 15.00 GM	A604855
GN-7018	0.008	2	1.08	0.006	0.26	0.1	0.05	3	0.9	0.49	5	4.5	GROUP 1DX - 15.00 GM	A604855
GN-7019	0.006	4	1.21	0.008	0.35	0.1	0.11	2.1	0.8	0.74	5	5.7	GROUP 1DX - 15.00 GM	A604855
GN-7020	0.005	3	1.59	0.006	0.2	0.1	0.07	1.8	0.6	0.38	7	2.4	GROUP 1DX - 15.00 GM	A604855
GN-7251	0.006	1	1.06	0.01	0.19	0.1	0.19	1.4	0.3	0.44	3	5.7	GROUP 1DX - 15.00 GM	A604855
GN-7252	0.004	3	0.61	0.006	0.17	0.1	0.05	0.6	0.3	0.26	3	4.6	GROUP 1DX - 15.00 GM	A604855
GN-7253	0.003	4	0.86	0.004	0.24	0.1	0.45	3	0.4	0.36	3	4.5	GROUP 1DX - 15.00 GM	A604855
GN-7254	0.003	2	0.67	0.009	0.13	0.1	0.08	0.3	0.2	0.2	3	2.8	GROUP 1DX - 15.00 GM	A604855
GN-7255	0.005	3	1.08	0.004	0.18	0.1	0.07	2.1	0.3	0.23	4	6.8	GROUP 1DX - 15.00 GM	A604855
GN-7256	0.006	3	0.89	0.005	0.18	0.1	0.1	1.5	0.3	0.23	3	6.2	GROUP 1DX - 15.00 GM	A604855
GN-7257	0.005	2	0.72	0.01	0.12	0.1	0.08	1	0.2	0.24	3	3.2	GROUP 1DX - 15.00 GM	A604855
GN-7258	0.002	2	0.9	0.01	0.1	0.1	0.09	0.3	0.3	0.24	3	3.3	GROUP 1DX - 15.00 GM	A604855
GN-7259	0.005	3	0.9	0.012	0.11	0.1	0.07	0.7	0.3	0.18	3	1.9	GROUP 1DX - 15.00 GM	A604855
GN-7260	0.004	2	0.59	0.007	0.12	0.2	0.14	0.8	0.2	0.16	2	4.1	GROUP 1DX - 15.00 GM	A604855
GN-7261	0.004	1	0.82	0.007	0.09	0.1	0.09	0.5	0.3	0.13	3	2.2	GROUP 1DX - 15.00 GM	A604855
GN-7262	0.011	1	0.75	0.02	0.03	0.1	0.17	0.7	0.1	0.06	2	1.3	GROUP 1DX - 15.00 GM	A604855
GN-7263	0.004	1	0.67	0.007	0.07	0.1	0.06	0.4	0.1	0.12	3	2.5	GROUP 1DX - 15.00 GM	A604855
GN-7264	0.006	2	1.1	0.008	0.16	0.2	0.2	1.1	0.4	0.31	3	6.2	GROUP 1DX - 15.00 GM	A604855
GN-7265	0.004	3	0.97	0.004	0.11	0.2	0.77	2.6	0.8	0.11	2	11.3	GROUP 1DX - 15.00 GM	A604855
GN-7266	0.003	1	2.25	0.005	0.06	0	0.16	0.6	0.2	0.13	6	3.5	GROUP 1DX - 15.00 GM	A604855
GN-7267	0.003	2	0.87	0.007	0.06	0.1	0.09	0.4	0.2	0.11	4	3.5	GROUP 1DX - 15.00 GM	A604855
GN-7268	0.003	2	1.34	0.004	0.09	0.1	0.41	2.1	0.3	0.06	5	5.9	GROUP 1DX - 15.00 GM	A604855
GN-7269	0.002	2	1.26	0.006	0.09	0.1	0.3	0.7	0.3	0.12	3	3.5	GROUP 1DX - 15.00 GM	A604855
GN-7270	0.003	2	0.87	0.005	0.08	0.1	0.2	1.8	0.2	0.12	2	4.9	GROUP 1DX - 15.00 GM	A604855
GN-7271	0.003	2	0.57	0.006	0.07	0.1	0.03	0.3	0.2	0.09	4	1.8	GROUP 1DX - 15.00 GM	A604855
GN-7272	0.002	0	0.54	0.003	0.08	0.1	0.04	0.3	0.2	0.13	4	3.1	GROUP 1DX - 15.00 GM	A604855
GN-7273	0.002	0	1.6	0.006	0.05	0.1	0.18	0.3	0.2	0.09	3	1.6	GROUP 1DX - 15.00 GM	A604855
GN-7274	0.003	2	0.66	0.009	0.08	0.1	0.05	0.4	0.2	0.12	3	2.7	GROUP 1DX - 15.00 GM	A604855
GN-7275	0.003	3	1.11	0.005	0.08	0.1	0.11	0.3	0.2	0.12	3	2.5	GROUP 1DX - 15.00 GM	A604855
GN-7276	0.002	1	0.56	0.011	0.06	0.1	0.06	0.2	0.2	0.09	2	1.4	GROUP 1DX - 15.00 GM	A604855
GN-7277	0.005	1	1.01	0.004	0.09	0.1	0.05	1	0.2	0.15	3	3.4	GROUP 1DX - 15.00 GM	A604855
GN-7278	0.003	2	0.46	0.016	0.05	0.1	0.03	0.3	0.1	0.07	2	0.6	GROUP 1DX - 15.00 GM	A604855
GN-7279	0.005	2	0.48	0.014	0.06	0.1	0.05	0.3	0.1	0.06	2	1.3	GROUP 1DX - 15.00 GM	A604855
GN-7280	0.008	3	1.34	0.007	0.12	0.1	0.41	2.9	0.3	0.22	3	3.2	GROUP 1DX - 15.00 GM	A604855
GN-7281	0.005	3	1.28	0.005	0.15	0.1	0.23	2.6	0.3	0.12	4	2.9	GROUP 1DX - 15.00 GM	A604855
GN-7282	0.006	3	1.1	0.011	0.1	0.1	0.19	1.6	0.2	0.14	3	2.9	GROUP 1DX - 15.00 GM	A604855
GN-7351	0.006	2	0.71	0.008	0.15	0.1	0.28	2.8	0.5	0.22	3	6.5	GROUP 1DX - 15.00 GM	A604855
GN-7352	0.006	2	1.22	0.004	0.1	0.1	0.22	4.4	0.7	0.15	5	8.6	GROUP 1DX - 15.00 GM	A604855
GN-7353	0.011	2	0.74	0.01	0.08	0.1	0.08	1.2	0.3	0.11	2	3.7	GROUP 1DX - 15.00 GM	A604855
GN-7354	0.008	2	0.75	0.015	0.07	0.1	0.11	0.7	0.2	0.1	2	1.8	GROUP 1DX - 15.00 GM	A604855
GN-7355	0.008	3	1.28	0.007	0.15	0.1	0.37	2.6	0.7	0.22	4	9.2	GROUP 1DX - 15.00 GM	A604855
GN-7356	0.008	2	1.23	0.011	0.14	0.2	0.18	1.9	0.5	0.24	4	5.2	GROUP 1DX - 15.00 GM	A604855
GN-7357	0.003	1	0.84	0.01	0.09	0	0.14	0.3	0.4	0.25	2	4.6	GROUP 1DX - 15.00 GM	A604855
GN-7358	0.004	1	0.58	0.011	0.09	0.1	0.09	0.4	0.4	0.2	3	4.4	GROUP 1DX - 15.00 GM	A604855
GN-7359	0.008	1	0.54	0.02	0.22	0	0.08	1.1	0.3	0.58	2	2.2	GROUP 1DX - 15.00 GM	A604855
GN-7360	0.006	2	1.21	0.009	0.2	0.2	0.14	0.6	0.3	0.49	4	4.2	GROUP 1DX - 15.00 GM	A604855
GN-7361	0.002	2	0.5	0.012	0.08	0.1	0.05	0.2	0.2	0.2	3	2.4	GROUP 1DX - 15.00 GM	A604855
GN-7362	0.004	1	0.28	0.017	0.03	0	0.03	0.2	0.1	0.07	2	0.9	GROUP 1DX - 15.00 GM	A604855
GN-7363	0.008	2	0.69	0.016	0.06	0.1	0.04	0.5	0.1	0.09	4	2	GROUP 1DX - 15.00 GM	A604855
GN-7364	0.003	1	0.48	0.012	0.06	0.1	0.03	0.2	0.1	0.08	3	1.7	GROUP 1DX - 15.00 GM	A604855
GN-7365	0.002	2	0.64	0.008	0.1	0.1	0.06	0.2	0.3	0.2	3	3.6	GROUP 1DX - 15.00 GM	A604855
GN-7366	0.004	0	0.76	0.007	0.07	0.2	0.04	0.3	0.2	0.12	5	1.8	GROUP 1DX - 15.00 GM	A604855

SAMPLES	GPS ID	Datum	Easting	Northing	Date Time	Elevation	Mo	Cu	Pb	Zn	Ag	Ni
GN-7367	GN07367	NAD83-9V	444523	6962140	14/07/2006 13:03	1424	17.6	66.6	17.6	245	2.1	47.7
GN-7368	GN07368	NAD83-9V	444512	6962192	14/07/2006 13:13	1411.2	8.4	38.6	6.8	38	3.8	9.3
GN-7369	GN07369	NAD83-9V	444499	6962240	14/07/2006 13:24	1391.7	23.7	62.4	11.5	61	6.9	12.8
GN-7370	GN07370	NAD83-9V	444497	6962291	14/07/2006 13:37	1358.8	6	61.6	2.6	204	5.8	43.3
GN-7371	GN07371	NAD83-9V	444503	6962340	14/07/2006 13:56	1346	2.8	11.9	7.3	45	0.2	7.6
GN-7427	GN07427	NAD83-9V	444519	6962691	14/07/2006 15:21	1287.2	11.1	95.2	16.9	241	0.3	57.9
GN-7428	GN07428	NAD83-9V	444472	6962720	14/07/2006 15:37	1278	11.5	84.8	17.3	262	0.7	56.3
GN-7429	GN07429	NAD83-9V	444437	6962749	14/07/2006 15:40	1278.3	24.2	85.2	19.5	363	0.6	84.5
GN-7430	GN07430	NAD83-9V	444435	6962813	14/07/2006 15:47	1278.3	25.2	144.6	12.6	437	0.6	99.4
GN-7435	GN07435	NAD83-9V	444933	6961965	14/07/2006 12:53	1448.7	11.6	65.5	23.8	249	0.5	46.2
GN-7436	GN07436	NAD83-9V	444916	6962005	14/07/2006 13:06	1442.3	14	67	18.4	306	0.6	56.6
GN-7437	GN07437	NAD83-9V	444911	6962060	14/07/2006 13:22	1421.3	12.2	48.8	13.6	252	0.3	40.4
GN-7438	GN07438	NAD83-9V	444894	6962112	14/07/2006 13:26	1410	11.5	48	13.8	239	0.3	39.3
GN-7439	GN07439	NAD83-9V	444871	6962160	14/07/2006 13:29	1396.9	36	148.7	15.3	3573	2	993.9
GN-7440	GN07440	NAD83-9V	444842	6962212	14/07/2006 13:43	1382.6	15.3	56.2	12.5	251	1.2	53.3
GN-7441	GN07441	NAD83-9V	444811	6962258	14/07/2006 13:54	1368.9	29.7	105.1	14.6	448	1.6	91.4
GN-7442	GN07442	NAD83-9V	444776	6962306	14/07/2006 13:59	1356.1	35.6	287.4	13.9	839	3.7	178.8
GN-7443	GN07443	NAD83-9V	444736	6962349	14/07/2006 14:11	1349.7	30.6	261.7	12.9	754	3.4	157
GN-7444	GN07444	NAD83-9V	444713	6962395	14/07/2006 14:14	1340.8	31.9	242.7	14.4	671	3.8	139
GN-7445	GN07445	NAD83-9V	444689	6962442	14/07/2006 14:22	1330.5	43	214.8	14.7	886	3	153
GN-7446	GN07446	NAD83-9V	444650	6962470	14/07/2006 14:34	1328	40.1	224.3	14.4	881	2.6	145.3
GN-7447	GN07447	NAD83-9V	444625	6962523	14/07/2006 14:38	1316.7	11.6	63.5	17.3	204	0.5	39.3
GN-7448	GN07448	NAD83-9V	444614	6962571	14/07/2006 14:43	1309.1	11.4	74.7	17.4	238	0.7	45.8
GN-7449	GN07449	NAD83-9V	444598	6962621	14/07/2006 15:02	1303.6	8.9	59.5	14.4	186	0.5	37.2
GN-7450	GN07450	NAD83-9V	444559	6962652	14/07/2006 15:18	1293.9	2.8	21.2	10.2	97	0.1	18.1
GN-7451	GN07451	NAD83-9V	447042	6962230	14/07/2006 11:15	1474.9	11.2	64	49.2	103	1.1	21.1
GN-7452	GN07452	NAD83-9V	447015	6962275	14/07/2006 11:23	1467.9	3.7	40.1	37.7	88	0.4	15.3
GN-7453	GN07453	NAD83-9V	446996	6962325	14/07/2006 11:32	1463.3	4.1	35.5	29.1	85	0.3	13.1
GN-7454	GN07454	NAD83-9V	446983	6962374	14/07/2006 11:41	1445.4	3.5	33.2	36.5	82	0.3	13
GN-7455	GN07455	NAD83-9V	446960	6962417	14/07/2006 11:50	1429.2	2.6	31.2	19.7	116	0.3	15.7
GN-7456	GN07456	NAD83-9V	446933	6962481	14/07/2006 11:58	1424.3	14.6	52.3	33.1	240	0.5	45.6
GN-7457	GN07457	NAD83-9V	446911	6962528	14/07/2006 12:07	1418.8	9.2	46.1	33.4	146	0.4	24.8
GN-7458	GN07458	NAD83-9V	446898	6962564	14/07/2006 12:14	1408.5	7.7	37.3	39.1	154	0.8	31.3
GN-7459	GN07459	NAD83-9V	446864	6962608	14/07/2006 12:21	1411.2	9.2	54.9	33.3	201	0.8	42.7
GN-7460	GN07460	NAD83-9V	446841	6962653	14/07/2006 12:28	1410.6	9.1	55.4	23	155	0.5	28.4
GN-7461	GN07461	NAD83-9V	446818	6962700	14/07/2006 12:35	1399.3	12.1	39.5	18.8	284	0.4	63.1
GN-7462	GN07462	NAD83-9V	446796	6962737	14/07/2006 12:42	1387.4	8.2	42	25.4	151	0.5	29.6
GN-7463	GN07463	NAD83-9V	446774	6962782	14/07/2006 12:51	1364.6	10.1	57.1	25.1	138	0.5	28.1
GN-7464	GN07464	NAD83-9V	446745	6962820	14/07/2006 12:58	1375.9	12.9	57.1	25.7	165	0.5	28.6
GN-7488	GN07488	NAD83-9V	446708	6962836	14/07/2006 13:25	1360.3	52.9	71	18.3	1637	0.5	523.8
GN-7489	GN07489	NAD83-9V	446661	6962857	14/07/2006 13:35	1365.2	0.8	17.1	2.7	121	0	19.2
GN-7490	GN07490	NAD83-9V	446614	6962888	14/07/2006 13:42	1357.9	1.3	22.2	4.3	76	0	14
GN-7491	GN07491	NAD83-9V	446562	6962916	14/07/2006 13:55	1358.2	0.9	21.7	4	26	0.2	5.6
GN-7492	GN07492	NAD83-9V	446510	6962938	14/07/2006 14:02	1360.6	0.4	4.9	2	14	0	1.8
GN-7493	GN07493	NAD83-9V	446465	6962932	14/07/2006 14:10	1362.2	5.9	48.1	21.2	351	0.2	44.5
GN-7494	GN07494	NAD83-9V	446413	6962909	14/07/2006 14:18	1357	6.5	52.2	17.5	376	0.6	59.5
GN-7495	GN07495	NAD83-9V	446354	6962901	14/07/2006 14:25	1351.5	21.8	56	27.3	239	1.7	49.8
GN-7496	GN07496	NAD83-9V	446292	6962899	14/07/2006 14:33	1348.4	5	65.2	13	126	1.1	36.8
GN-7497	GN07497	NAD83-9V	446239	6962903	14/07/2006 14:41	1344.8	6	80.5	18.4	153	0.6	31.6
GN-7498	GN07498	NAD83-9V	446192	6962912	14/07/2006 14:48	1339.6	8.3	76.4	19	156	0.4	28.4
GN-8125	GN08125	NAD83-9V	444516	6962391	14/07/2006 14:01	1333.2	11.3	24.6	23.7	117	0.5	17.4
GN-8126	GN08126	NAD83-9V	444541	6962439	14/07/2006 14:11	1319.5	4.4	14.3	5.4	55	0	9.7
GN-8127	GN08127	NAD83-9V	444528	6962497	14/07/2006 14:20	1314.9	9	66.4	16	186	0.5	35.2
GN-8128	GN08128	NAD83-9V	444497	6962543	14/07/2006 14:31	1309.4	4.6	26	6.6	67	0.9	13.3
GN-8129	GN08129	NAD83-9V	444441	6962542	14/07/2006 14:44	1308.8	1.7	10.8	2.1	25	0.2	4.7
GN-8130	GN08130	NAD83-9V	444390	6962552	14/07/2006 14:56	1303.9	5.3	22.3	9.9	82	0.3	13.7
GN-8131	GN08131	NAD83-9V	444345	6962590	14/07/2006 15:08	1291.7	3.8	16.3	4	46	0.2	6.5

SAMPLES	Co	Mn	Fe	As	U	Au	Th	Sr	Cd	Sb	Bi	V	Ca	P	La	Cr	Mg	Ba
GN-7367	4.9	87	3.06	19.4	4.4	1.7	0.3	35	0.7	9.6	0.3	385	0.04	0.166	12	34	0.08	914
GN-7368	0.9	18	0.69	4.4	4.3	2.1	0	16	0.5	4.2	0.1	492	0.03	0.078	8	53	0.02	811
GN-7369	1	17	1.79	15	7.6	4.4	0.1	22	0.6	7.9	0.2	384	0.02	0.123	14	96	0.02	549
GN-7370	0.8	19	0.53	3	7.1	1.9	0	35	1.1	2.6	0.1	142	0.18	0.157	4	27	0.02	1531
GN-7371	2	125	1.22	4.2	0.7	0	0.2	12	0.1	0.9	0.2	46	0.01	0.053	12	10	0.1	180
GN-7427	21.8	1459	3.77	22.3	4.7	6.6	3	55	1.3	5.7	0.3	90	0.16	0.183	19	21	0.26	506
GN-7428	11.3	713	3.47	22.5	4.3	7	0.7	49	1.3	5.5	0.3	114	0.13	0.156	17	25	0.23	599
GN-7429	11.3	648	4.23	40.3	5.8	4.1	0.6	50	1.1	10.9	0.3	222	0.11	0.266	17	33	0.16	545
GN-7430	12.8	639	4.01	34.5	9.5	3.6	1.7	55	1.4	13	0.2	198	0.26	0.39	18	33	0.13	450
GN-7435	12.7	2362	3.75	10.5	2	2.4	0.4	39	0.6	3.6	0.4	66	0.02	0.213	10	16	0.04	498
GN-7436	8.3	1021	3.45	14.7	2.7	2.9	0.3	49	0.6	6.1	0.3	72	0.03	0.197	12	17	0.03	334
GN-7437	5.5	320	2.78	11.8	1.4	1.9	0.2	29	0.2	3.7	0.3	76	0.01	0.117	12	10	0.02	256
GN-7438	5.9	505	2.75	10.3	1.4	1.4	0.2	26	0.2	3.3	0.3	69	0.01	0.113	11	10	0.02	284
GN-7439	28.4	10560	5.45	99	44.9	7.3	1.1	147	75.5	17.8	0.3	190	0.54	0.518	8	57	0.12	1852
GN-7440	6.7	324	2.16	16.4	6.3	3.9	1	69	1	6.1	0.2	104	0.14	0.257	11	21	0.14	511
GN-7441	12.4	632	3.08	32.2	15.7	7	2.1	94	2.6	12.4	0.2	186	0.22	0.298	13	31	0.14	681
GN-7442	10.5	560	2.68	31.3	15.6	4.1	2.1	160	9.8	17.4	0.2	167	0.7	0.341	13	38	0.09	728
GN-7443	9.3	514	2.42	28.3	14.9	1	2.3	163	8.8	16.1	0.2	154	0.7	0.355	13	35	0.08	686
GN-7444	8.4	493	2.65	25.3	15.1	4.9	1.9	203	9.4	15.7	0.2	156	0.8	0.376	13	39	0.12	891
GN-7445	11.3	549	2.86	36.1	13.6	5.4	1.7	133	8.4	19.9	0.2	176	0.57	0.276	15	32	0.11	612
GN-7446	10.6	465	2.88	34.7	13.6	4	2	134	9	18.7	0.2	178	0.58	0.282	15	31	0.12	653
GN-7447	8.2	331	3.14	18.1	3.1	2.7	0.7	50	0.4	4.8	0.3	82	0.05	0.177	13	20	0.16	494
GN-7448	13.6	612	3.69	21.8	3.6	3.3	1.6	61	0.7	5.6	0.3	86	0.1	0.206	14	23	0.22	626
GN-7449	9.3	402	2.83	15.3	2.9	3.9	1	59	0.5	4.1	0.2	70	0.1	0.17	14	19	0.16	619
GN-7450	13.4	1335	4.16	5	0.9	3.7	1.3	14	1	1.3	0.2	29	0.02	0.09	18	10	0.13	279
GN-7451	4.5	255	5.2	43.3	4.4	8.6	2.5	86	0.2	8	0.4	57	0.08	0.285	18	19	0.17	694
GN-7452	2.6	130	5.32	30.8	1.4	7.1	2.7	38	0.1	5.3	0.3	30	0.01	0.19	14	22	0.33	1108
GN-7453	2.3	106	4.76	25.3	1.2	5.6	2.1	31	0.1	4.3	0.3	37	0.02	0.157	13	18	0.15	784
GN-7454	2.1	106	6.1	24.9	1.5	6.3	1.7	38	0.2	4.5	0.3	30	0.02	0.186	15	24	0.24	754
GN-7455	2.6	193	2.28	11.1	2.1	3.5	0.5	28	0.7	2	0.2	24	0.08	0.159	9	11	0.12	584
GN-7456	8.2	492	3.56	28.2	5.9	5.7	0.8	54	0.8	7.3	0.3	63	0.24	0.255	12	18	0.18	710
GN-7457	4	179	4.54	28.5	1.9	2.9	1.6	54	0.2	5.1	0.3	51	0.02	0.17	18	18	0.2	933
GN-7458	7.2	399	3.79	21	4.1	5.7	0.9	64	0.4	3	0.4	57	0.11	0.322	14	21	0.23	1484
GN-7459	6.7	233	5.56	31.1	3.4	6.8	1.5	78	0.4	5.8	0.4	68	0.33	0.283	15	25	0.26	1225
GN-7460	6.1	267	4.13	21.7	3.1	5.8	0.4	33	0.3	4.8	0.2	51	0.04	0.259	12	19	0.12	534
GN-7461	15.1	2618	4.74	27.5	4	2.8	0.9	59	1.2	6.1	0.3	57	0.39	0.432	9	19	0.24	692
GN-7462	6.2	325	3.93	22	1.8	6.8	0.7	44	0.2	4.8	0.2	46	0.03	0.175	14	13	0.14	506
GN-7463	5.7	370	3.9	26.3	4.9	4.5	0.1	59	0.8	4.5	0.3	57	0.16	0.266	10	19	0.12	516
GN-7464	7.9	942	3.43	24.2	4.2	5	0.6	54	0.5	5.2	0.2	55	0.04	0.173	11	13	0.07	419
GN-7488	93.3	21237	20.55	180.8	8.5	4.3	1.2	42	6.5	6.7	0.1	32	0.07	0.414	6	8	0.06	578
GN-7489	3.3	35	0.61	0.7	0.7	2.9	0.3	22	0.5	0.4	0	18	0.23	0.07	4	4	0.07	73
GN-7490	2.4	50	0.62	1.1	1.2	3.4	0.2	31	0.6	0.6	0.1	17	0.26	0.083	5	7	0.1	160
GN-7491	2.2	98	0.8	2.3	0.6	2.7	0.1	8	0.3	0.4	0.1	12	0.05	0.062	4	5	0.04	175
GN-7492	0.8	42	0.32	0	0.4	1	0.2	14	0.2	0.1	0.1	5	0.13	0.038	2	2	0.03	86
GN-7493	14.1	397	3.77	18.1	3.4	2.6	2.3	42	2	4.8	0.3	42	0.27	0.123	14	19	0.45	449
GN-7494	7.8	405	3.38	14.6	3.3	5.6	1.8	50	2.3	4.4	0.2	42	0.23	0.153	13	17	0.35	540
GN-7495	7.8	282	4.2	51.5	3.4	7.1	1	71	0.5	11.2	0.3	96	0.06	0.252	12	18	0.22	982
GN-7496	4.8	396	2.07	10.9	4.4	7.6	0.7	55	1.1	2.8	0.2	39	0.34	0.228	8	13	0.14	402
GN-7497	16.3	1427	3.97	18.4	2.7	9	3.1	41	0.5	4.2	0.2	39	0.04	0.175	14	17	0.26	474
GN-7498	5.6	371	3.84	18.6	2.1	4.9	1.1	28	0.2	3.8	0.2	46	0.01	0.12	16	16	0.16	344
GN-8125	2.6	62	2.44	22.8	1.2	1.7	0.4	44	0.1	3.9	0.3	131	0.01	0.091	14	18	0.05	520
GN-8126	1.7	94	0.75	5.4	0.7	0.5	0	13	0	1.4	0.1	39	0.01	0.043	8	5	0.02	129
GN-8127	5.9	197	3.92	20.1	2.6	3.5	1.6	55	0.2	4.7	0.2	98	0.04	0.252	15	26	0.18	522
GN-8128	1.6	57	0.86	6.8	1.5	1.2	0.1	18	0.2	1.6	0.1	42	0.03	0.073	6	10	0.03	223
GN-8129	1.6	31	0.71	2.4	0.3	0	0.2	4	0	0.5	0.1	29	0.01	0.024	6	5	0.03	75
GN-8130	2.5	469	1.59	9.8	0.8	1.6	0.1	21	0.3	2.1	0.1	57	0.02	0.067	8	8	0.03	235
GN-8131	1.8	32	0.72	4.8	0.5	1.8	0.1	8	0.1	0.8	0.1	44	0.01	0.031	12	7	0.02	163

SAMPLES	Ti	B	Al	Na	K	W	Hg	Sc	Tl	S	Ga	Se	Analysis	Acme file
GN-7367	0.005	2	1.34	0.006	0.07	0.2	0.25	0.6	0.8	0.16	6	11.3	GROUP 1DX - 15.00 GM	A604855
GN-7368	0.006	2	0.39	0.013	0.06	0.1	0.4	0.2	0.7	0.13	4	10	GROUP 1DX - 15.00 GM	A604855
GN-7369	0.006	1	0.46	0.013	0.11	0.2	0.39	0.4	1.3	0.38	6	21.5	GROUP 1DX - 15.00 GM	A604855
GN-7370	0.003	1	0.61	0.022	0.04	0.1	0.45	0.2	0.4	0.12	2	6.9	GROUP 1DX - 15.00 GM	A604855
GN-7371	0.006	0	0.51	0.008	0.05	0.1	0.03	0.3	0.2	0	4	1	GROUP 1DX - 15.00 GM	A604855
GN-7427	0.007	2	0.97	0.003	0.13	0.1	0.07	2.4	0.3	0.07	3	3.9	GROUP 1DX - 15.00 GM	A604855
GN-7428	0.008	3	1.23	0.006	0.12	0.1	0.12	1.5	0.4	0.11	4	4.1	GROUP 1DX - 15.00 GM	A604855
GN-7429	0.007	1	1.15	0.004	0.1	0.2	0.1	1.3	0.4	0.09	4	6.2	GROUP 1DX - 15.00 GM	A604855
GN-7430	0.006	3	0.78	0.003	0.09	0.2	0.18	1.9	0.4	0	2	6.6	GROUP 1DX - 15.00 GM	A604855
GN-7435	0.005	1	0.84	0.005	0.08	0.2	0.05	0.6	0.3	0.17	3	3.8	GROUP 1DX - 15.00 GM	A604855
GN-7436	0.003	2	0.74	0.003	0.08	0.1	0.05	0.4	0.3	0.12	2	5.4	GROUP 1DX - 15.00 GM	A604855
GN-7437	0.002	1	0.44	0.006	0.07	0.1	0.02	0.2	0.2	0.1	3	3.1	GROUP 1DX - 15.00 GM	A604855
GN-7438	0.002	1	0.44	0.005	0.07	0.1	0.02	0.3	0.2	0.11	3	1.9	GROUP 1DX - 15.00 GM	A604855
GN-7439	0.007	2	0.97	0.007	0.12	0.1	0.61	2.4	0.4	0.2	3	10.9	GROUP 1DX - 15.00 GM	A604855
GN-7440	0.004	2	0.73	0.005	0.08	0.1	0.14	1.4	0.4	0.1	2	4.7	GROUP 1DX - 15.00 GM	A604855
GN-7441	0.004	2	0.85	0.004	0.1	0.2	0.26	3.1	0.6	0.09	2	7.5	GROUP 1DX - 15.00 GM	A604855
GN-7442	0.003	3	0.44	0.004	0.1	0.1	0.73	3.5	0.6	0.13	1	18.3	GROUP 1DX - 15.00 GM	A604855
GN-7443	0.003	2	0.42	0.003	0.1	0.1	0.66	3.3	0.6	0.11	1	14.3	GROUP 1DX - 15.00 GM	A604855
GN-7444	0.007	3	0.53	0.004	0.11	0.1	0.57	3.2	0.6	0.13	1	14.6	GROUP 1DX - 15.00 GM	A604855
GN-7445	0.004	2	0.54	0.004	0.1	0.1	0.6	3	0.7	0.09	1	15	GROUP 1DX - 15.00 GM	A604855
GN-7446	0.004	2	0.56	0.004	0.1	0.1	0.62	3.1	0.6	0.09	1	14.3	GROUP 1DX - 15.00 GM	A604855
GN-7447	0.005	1	0.82	0.004	0.1	0.2	0.07	1	0.3	0.12	3	3.1	GROUP 1DX - 15.00 GM	A604855
GN-7448	0.006	2	0.95	0.003	0.11	0.2	0.05	1.9	0.3	0.11	3	4.3	GROUP 1DX - 15.00 GM	A604855
GN-7449	0.005	2	0.83	0.004	0.1	0.1	0.06	1.3	0.2	0.08	3	2.8	GROUP 1DX - 15.00 GM	A604855
GN-7450	0.004	0	0.61	0.004	0.07	0.1	0.04	1.9	0.1	0	2	0.9	GROUP 1DX - 15.00 GM	A604855
GN-7451	0.005	3	0.96	0.005	0.19	0.1	0.12	2.3	0.5	0.34	3	4.9	GROUP 1DX - 15.00 GM	A604855
GN-7452	0.006	1	1.37	0.005	0.17	0.1	0.03	1.5	0.5	0.29	5	1.2	GROUP 1DX - 15.00 GM	A604855
GN-7453	0.005	1	1.27	0.004	0.11	0.1	0.04	1.4	0.4	0.19	5	1.6	GROUP 1DX - 15.00 GM	A604855
GN-7454	0.007	2	1.56	0.004	0.11	0	0.04	1.1	0.3	0.13	5	2	GROUP 1DX - 15.00 GM	A604855
GN-7455	0.005	1	1.26	0.014	0.1	0.1	0.05	0.6	0.3	0.1	4	1.4	GROUP 1DX - 15.00 GM	A604855
GN-7456	0.006	3	1.1	0.007	0.14	0.1	0.09	1.3	0.4	0.17	3	3.6	GROUP 1DX - 15.00 GM	A604855
GN-7457	0.006	2	1.17	0.005	0.18	0.1	0.04	1.6	0.4	0.22	4	2.7	GROUP 1DX - 15.00 GM	A604855
GN-7458	0.006	3	1.73	0.007	0.18	0.1	0.18	1.4	0.7	0.2	5	2.9	GROUP 1DX - 15.00 GM	A604855
GN-7459	0.006	3	1.24	0.006	0.2	0.1	0.09	2	0.5	0.3	4	3.9	GROUP 1DX - 15.00 GM	A604855
GN-7460	0.003	1	1.06	0.005	0.09	0.1	0.09	0.6	0.3	0.15	3	3	GROUP 1DX - 15.00 GM	A604855
GN-7461	0.01	2	1.11	0.007	0.11	0.1	0.07	1.8	0.2	0.2	3	3.1	GROUP 1DX - 15.00 GM	A604855
GN-7462	0.005	1	0.74	0.004	0.12	0.1	0.02	1.1	0.2	0.17	3	2.9	GROUP 1DX - 15.00 GM	A604855
GN-7463	0.002	2	1.2	0.006	0.1	0.1	0.08	0.3	0.3	0.18	4	3.9	GROUP 1DX - 15.00 GM	A604855
GN-7464	0.005	2	1.1	0.009	0.08	0.1	0.04	0.9	0.3	0.14	4	2.3	GROUP 1DX - 15.00 GM	A604855
GN-7488	0.008	2	0.71	0.006	0.07	0.1	0.19	2.1	0.4	0.15	2	4.2	GROUP 1DX - 15.00 GM	A604855
GN-7489	0.032	1	0.51	0.028	0.03	0	0.02	0.6	0.1	0.24	2	2.1	GROUP 1DX - 15.00 GM	A604855
GN-7490	0.028	2	0.75	0.027	0.03	0.1	0.03	0.8	0.1	0.14	3	2.5	GROUP 1DX - 15.00 GM	A604855
GN-7491	0.012	1	1.03	0.014	0.02	0.1	0.05	0.5	0.1	0	3	1.3	GROUP 1DX - 15.00 GM	A604855
GN-7492	0.014	1	0.69	0.016	0.02	0.1	0.02	0.3	0	0	2	0.5	GROUP 1DX - 15.00 GM	A604855
GN-7493	0.004	2	1	0.003	0.08	0.1	0.03	2.2	0.2	0.07	4	2.8	GROUP 1DX - 15.00 GM	A604855
GN-7494	0.003	3	0.95	0.003	0.1	0.1	0.06	2.4	0.3	0.1	3	4.4	GROUP 1DX - 15.00 GM	A604855
GN-7495	0.004	1	1.1	0.006	0.14	0.1	0.22	1.6	0.6	0.23	4	4.5	GROUP 1DX - 15.00 GM	A604855
GN-7496	0.004	2	0.92	0.011	0.08	0.1	0.21	2.4	0.2	0.11	2	3.5	GROUP 1DX - 15.00 GM	A604855
GN-7497	0.004	1	1.05	0.003	0.11	0.1	0.07	2.6	0.3	0.12	3	2.2	GROUP 1DX - 15.00 GM	A604855
GN-7498	0.004	2	0.89	0.002	0.08	0.1	0.08	1.4	0.2	0.09	4	2.4	GROUP 1DX - 15.00 GM	A604855
GN-8125	0.004	1	0.59	0.006	0.08	0.1	0.02	1	0.3	0.14	6	2.4	GROUP 1DX - 15.00 GM	A604855
GN-8126	0.003	2	0.24	0.008	0.04	0.1	0.02	0.3	0.1	0	2	0.9	GROUP 1DX - 15.00 GM	A604855
GN-8127	0.005	1	0.98	0.004	0.13	0.1	0.04	2.2	0.3	0.15	4	3.6	GROUP 1DX - 15.00 GM	A604855
GN-8128	0.002	2	0.27	0.009	0.04	0.2	0.06	0.4	0.1	0.06	2	1.8	GROUP 1DX - 15.00 GM	A604855
GN-8129	0.007	0	0.38	0.011	0.02	0.1	0.01	0.4	0.1	0	3	0	GROUP 1DX - 15.00 GM	A604855
GN-8130	0.004	1	0.37	0.009	0.05	0.1	0.03	0.5	0.1	0.08	3	1.6	GROUP 1DX - 15.00 GM	A604855
GN-8131	0.005	1	0.3	0.006	0.03	0.1	0.04	0.3	0.1	0	3	0.6	GROUP 1DX - 15.00 GM	A604855

SAMPLES	GPS ID	Datum	Easting	Northing	Date Time	Elevation	Mo	Cu	Pb	Zn	Ag	Ni
GN-8132	GN08132	NAD83-9V	444295	6962605	14/07/2006 15:21	1287.2	38.4	143.2	9.9	3333	1.5	314.5
GN-8134	GN08134	NAD83-9V	444250	6962635	14/07/2006 15:31	1282	32.8	133.9	11.2	2666	1.8	236.5
GN-8135	GN08135	NAD83-9V	444203	6962666	14/07/2006 15:41	1275.3	32.5	167.2	10	3075	1.6	336.2
GN-8234	GN08234	NAD83-9V	445021	6961345	14/07/2006 10:04	1511.5	30.4	133.1	17.7	439	4.5	59.8
GN-8235	GN08235	NAD83-9V	445065	6961385	14/07/2006 10:32	1488	26.4	118.9	20.6	374	3.9	52
GN-8236	GN08236	NAD83-9V	445102	6961384	14/07/2006 10:44	1492.9	32.4	139.7	17.1	185	5.9	42.5
GN-8237	GN08237	NAD83-9V	445029	6961491	14/07/2006 10:52	1511.2	31.8	129.7	19.2	169	6.5	36.5
GN-8238	GN08238	NAD83-9V	445026	6961546	14/07/2006 10:56	1500.8	18.5	83.2	11.8	103	5.5	25.2
GN-8239	GN08239	NAD83-9V	445014	6961618	14/07/2006 11:11	1507.5	34.2	162.1	16.1	225	10.5	57.9
GN-8240	GN08240	NAD83-9V	445009	6961673	14/07/2006 11:23	1508.2	16.2	207.7	16.5	622	9.7	164.3
GN-8241	GN08241	NAD83-9V	445014	6961719	14/07/2006 11:40	1495.3	36.4	165.8	9.9	102	16.3	23.4
GN-8242	GN08242	NAD83-9V	445012	6961777	14/07/2006 11:57	1495.3	11.4	234.9	15.2	733	8.4	243
GN-8243	GN08243	NAD83-9V	445021	6961822	14/07/2006 12:02	1493.8	14.4	264.4	43	666	1.5	162.7
GN-8244	GN08244	NAD83-9V	444991	6961862	14/07/2006 12:18	1482.9	3.9	60.1	10.7	226	0.2	48.4
GN-8245	GN08245	NAD83-9V	444968	6961926	14/07/2006 12:43	1470.4	3.9	62.7	11.1	237	0.3	52.3

SAMPLES	Co	Mn	Fe	As	U	Au	Th	Sr	Cd	Sb	Bi	V	Ca	P	La	Cr	Mg	Ba
GN-8132	10.6	1165	2.12	35.3	21.3	5.6	0.9	55	35.6	22.8	0.1	282	0.49	0.182	13	32	0.17	758
GN-8134	12.1	1260	2.31	34.1	19.5	5.7	0.6	46	29.1	17.8	0.2	243	0.37	0.181	13	31	0.16	717
GN-8135	6.2	591	2.12	31.3	27.7	6.6	0.7	54	32.6	18.2	0.2	251	0.5	0.16	13	32	0.19	997
GN-8234	6.6	476	5.72	44	12.9	8.6	2.7	82	1.5	17.8	0.3	273	0.03	0.437	12	31	0.06	206
GN-8235	7.6	497	6.64	42.1	10	7.2	3.3	88	1.4	16.3	0.3	223	0.03	0.42	11	25	0.05	129
GN-8236	4.3	255	4.74	45	13.4	7.8	0.3	134	1.2	9.1	0.3	330	0.12	0.674	9	60	0.07	1067
GN-8237	3.7	188	4.45	39.1	13.3	7.5	0.3	166	1.2	8.1	0.3	365	0.18	0.69	10	59	0.07	925
GN-8238	2	72	1.95	16.9	12	2.8	0.2	127	0.6	7	0.2	334	0.15	0.294	10	52	0.05	771
GN-8239	3.4	91	4.01	30.7	16.9	9	0.7	181	1	13	0.2	852	0.11	0.394	13	87	0.09	261
GN-8240	19.8	1195	5.79	24.1	10.1	9.4	2.6	109	3.3	5.5	0.2	174	0.13	0.466	9	79	0.08	426
GN-8241	1.2	28	2.8	34.5	21	6.7	0	107	0.6	15.8	0.1	426	0.07	0.453	10	115	0.03	400
GN-8242	23.8	1505	6.08	26.8	10.9	6	3.8	116	4.1	5.9	0.2	162	0.18	0.412	9	82	0.12	255
GN-8243	21	471	12.85	24.3	5.3	25.5	5	136	0.7	5.6	0.4	90	0.09	0.428	13	42	0.13	231
GN-8244	13.1	581	3.59	7.5	1.3	3.6	0.2	24	0.3	1.3	0.2	36	0.06	0.113	7	10	0.05	296
GN-8245	13.5	586	3.83	8	1.4	4.5	0.3	25	0.4	1.5	0.2	38	0.06	0.118	8	10	0.06	318

SAMPLES	Ti	B	Al	Na	K	W	Hg	Sc	Tl	S	Ga	Se	Analysis	Acme file
GN-8132	0.004	3	1	0.006	0.07	0.1	0.63	2.7	1.5	0.09	2	6.8	GROUP 1DX - 15.00 GM	A604855
GN-8134	0.005	1	0.93	0.007	0.06	0.3	0.7	2.2	1.3	0.07	2	5.7	GROUP 1DX - 15.00 GM	A604855
GN-8135	0.005	5	0.97	0.008	0.06	0.2	0.77	2.3	1.4	0.1	2	6.2	GROUP 1DX - 15.00 GM	A604855
GN-8234	0.006	1	1.35	0.01	0.17	0.2	1.18	3.3	1.1	0.65	3	10.5	GROUP 1DX - 15.00 GM	A604855
GN-8235	0.005	1	1.29	0.012	0.18	0.2	0.91	3.7	1.1	0.79	3	11.1	GROUP 1DX - 15.00 GM	A604855
GN-8236	0.005	2	1.91	0.004	0.11	0.3	1.14	1	1.1	0.32	4	16.1	GROUP 1DX - 15.00 GM	A604855
GN-8237	0.004	2	1.75	0.005	0.11	0.2	1.07	0.9	1.2	0.34	4	18.3	GROUP 1DX - 15.00 GM	A604855
GN-8238	0.007	3	0.73	0.011	0.11	0.1	0.37	0.9	0.6	0.23	3	20.2	GROUP 1DX - 15.00 GM	A604855
GN-8239	0.012	3	1.32	0.012	0.2	0.2	1.06	3.4	1.6	0.53	6	31.1	GROUP 1DX - 15.00 GM	A604855
GN-8240	0.011	2	2.31	0.007	0.13	0.1	0.73	6.6	0.6	0.3	5	18.8	GROUP 1DX - 15.00 GM	A604855
GN-8241	0.003	1	1.09	0.012	0.14	0.2	1.72	0.6	1.6	0.49	6	38.6	GROUP 1DX - 15.00 GM	A604855
GN-8242	0.012	1	2.69	0.007	0.14	0.1	0.79	9.8	0.5	0.3	4	17.7	GROUP 1DX - 15.00 GM	A604855
GN-8243	0.007	2	1.65	0.017	0.24	0.1	0.21	8.3	0.4	0.7	4	10.4	GROUP 1DX - 15.00 GM	A604855
GN-8244	0.005	2	0.79	0.011	0.07	0.1	0.03	1.2	0.1	0.13	3	1.3	GROUP 1DX - 15.00 GM	A604855
GN-8245	0.006	1	0.84	0.012	0.07	0.1	0.03	1.1	0.1	0.14	3	1.6	GROUP 1DX - 15.00 GM	A604855