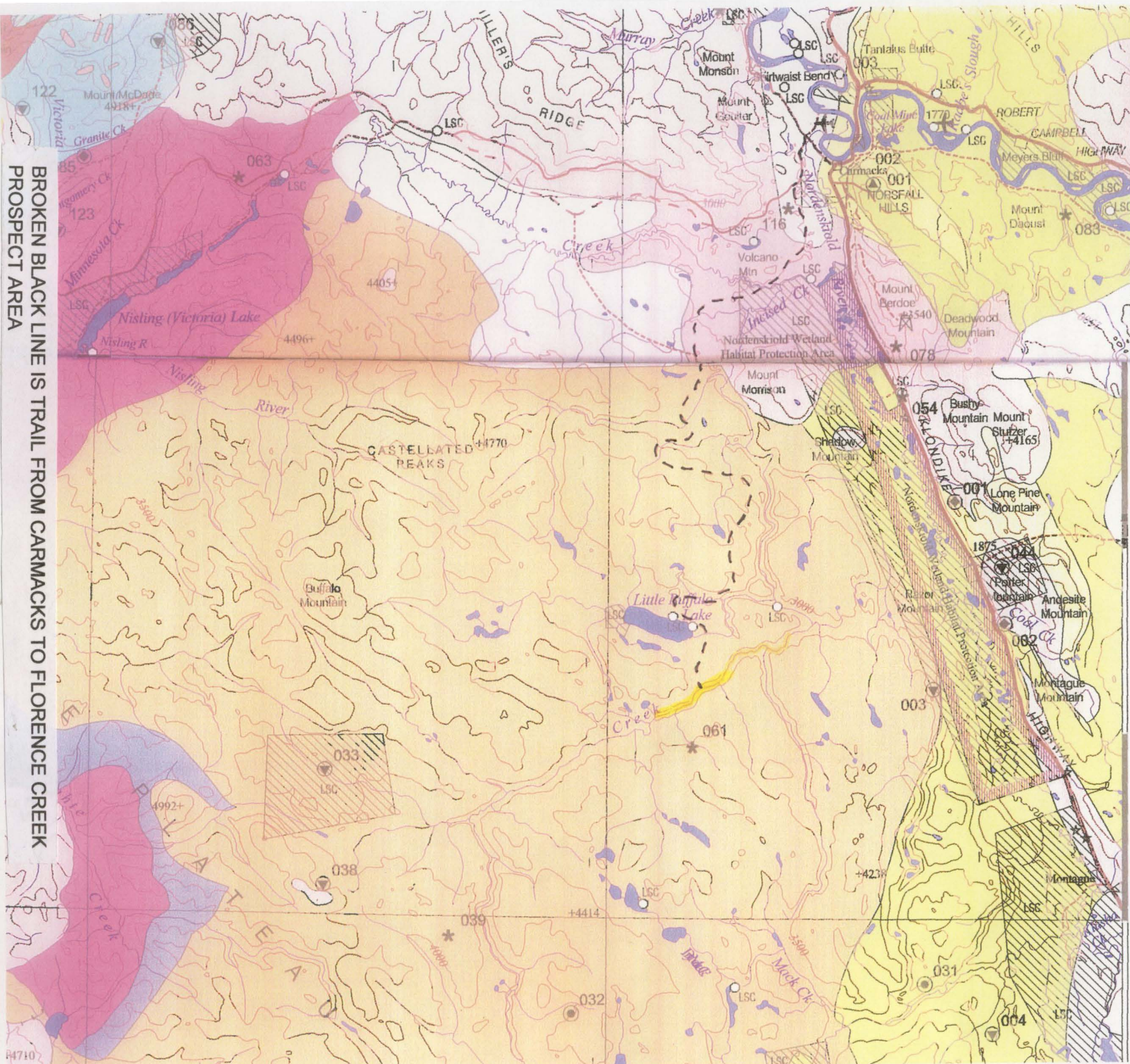


TARGET EVALUATION
REPORT OF 2008 FIELD ACTIVITIES
FUNDED UNDER YMIP GRANT O8-003

PREPARED FOR
DIAMOND TOOTH RESOURCES
PO. BOX 1170
MARSH LAKE YUKON
YOB 1Y1

BY:
CHARLIE BROWN PROSPECTOR
2008

BROKEN BLACK LINE IS TRAIL FROM CARMACKS TO FLORENCE CREEK
PROSPECT AREA



688
686
684
682
680
678
676
674
672
670
668
666
664
662
660
658
656
654
652
650
648
646
644
642
640
638
636
634
632
630
628
626
624
622
620
618
616
614
612
610
608
606
604
602
600
598
596
594
592
590
588
586
584
582
580
578
576
574
572
570
568
566
564
562
560
558
556
554
552
550
548
546
544
542
540
538
536
534
532
530
528
526
524
522
520
518
516
514
512
510
508
506
504
502
500
498
496
494
492
490
488
486
484
482
480
478
476
474
472
470
468
466
464
462
460
458
456
454
452
450
448
446
444
442
440
438
436
434
432
430
428
426
424
422
420
418
416
414
412
410
408
406
404
402
400
398
396
394
392
390
388
386
384
382
380
378
376
374
372
370
368
366
364
362
360
358
356
354
352
350
348
346
344
342
340
338
336
334
332
330
328
326
324
322
320
318
316
314
312
310
308
306
304
302
300
298
296
294
292
290
288
286
284
282
280
278
276
274
272
270
268
266
264
262
260
258
256
254
252
250
248
246
244
242
240
238
236
234
232
230
228
226
224
222
220
218
216
214
212
210
208
206
204
202
200
198
196
194
192
190
188
186
184
182
180
178
176
174
172
170
168
166
164
162
160
158
156
154
152
150
148
146
144
142
140
138
136
134
132
130
128
126
124
122
120
118
116
114
112
110
108
106
104
102
100
98
96
94
92
90
88
86
84
82
80
78
76
74
72
70
68
66
64
62
60
58
56
54
52
50
48
46
44
42
40
38
36
34
32
30
28
26
24
22
20
18
16
14
12
10
8
6
4
2
0

Suffalo

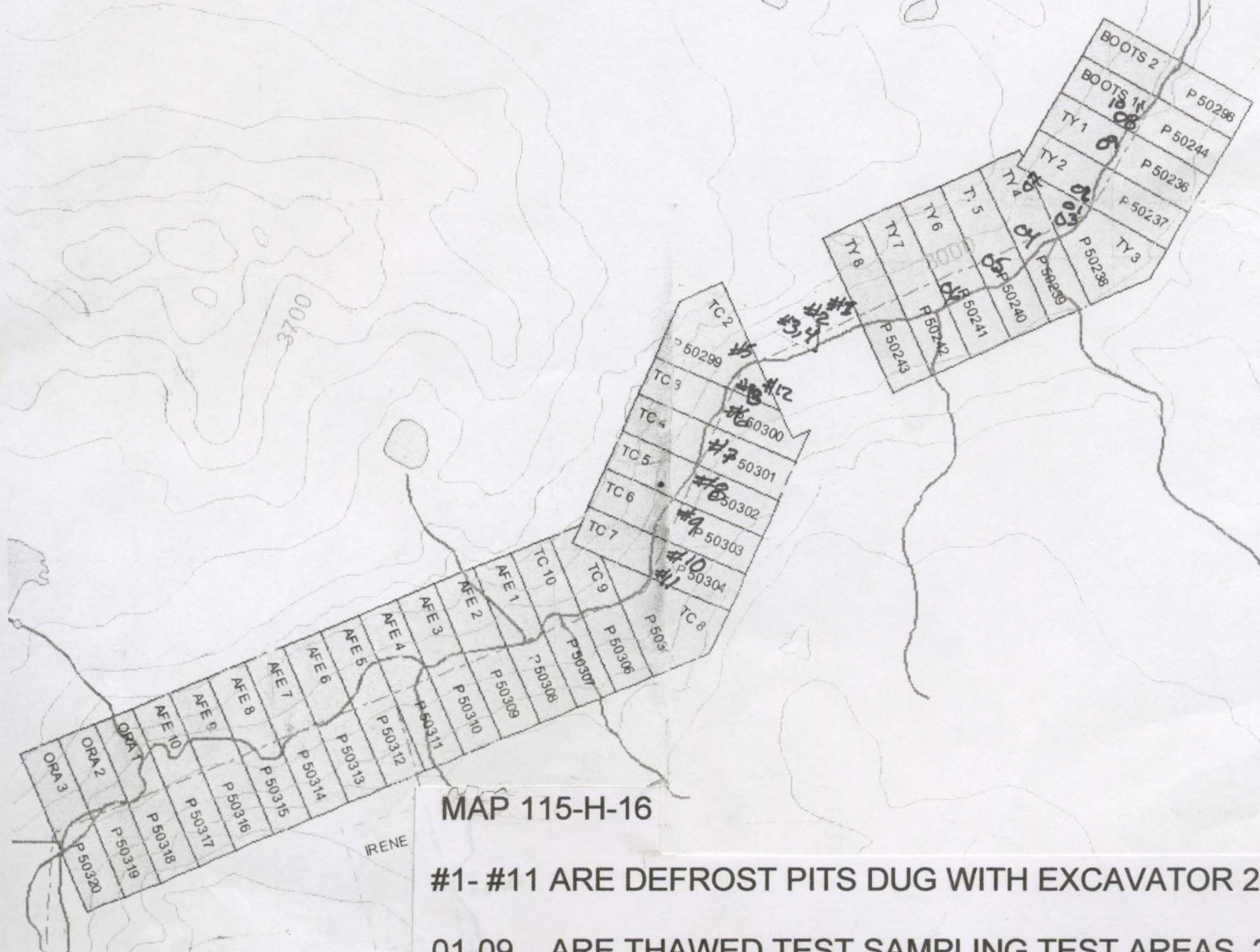
Lake

LSC S-227B1

2 MILES

MW00262

N
WIL



MAP 115-H-16

#1- #11 ARE DEFROST PITS DUG WITH EXCAVATOR 2008

01-09 ARE THAWED TEST SAMPLING TEST AREAS 2008

NOTE: BETWEEN TC2 AND TY8 THERE IS NO GAP
TC1 JOINS UP TO TY8

(1)

TABLE OF CONTENTS

	PAGE
INTRODUCTION	2
AREA 1- FLORENCE CREEK TY 1-8 & BOOTS1 PL claims	PROJECT SUMMARY 2
AREA 2 FLORENCE CREEK 2 Mile PL lease Florence creek	PROJECT SUMMARY 2
	AREA LOCATION AND ACCESS 3
	PREVIOUS WORK AND EXPLORATION 3
	REGIONAL AND GENERAL GEOLOGY 4
	DESCRIPTION AND SUMMARY OF WORK 4
	PLACER PANNING RESULTS 6
	CONCLUSIONS AND RECOMONDATIONS 7
	PROSPECTING ACTIVITIES, FIELD NOTES 8
FIGURE 1- FLORENCE CREEK AREA- Project location map (side pocket folder)	
FIGURE 2- FLORENCE CREEK AREA- Regional geology	4
VARIOUS FIELD MAPS - creek pictures - Trenching, sampling (side pocket folder)	

(2)

INTRODUCTION

This report prepared for Diamond Tooth Resources funded under Target Evaluation Grant 08-003 of the Yukon Mineral incentive program. (YMIP). A detailed summary of field activities and copies of field notes are included for Area1 and Area. On page 8.

AREA 1- FLORENCE CREEK TY1-8, BOOTS1

PROJECT SUMMARY

Work in this area was viable for prospecting in 2008. Old timers workings from the 80's created thawed ground, making for digging trenches in thawed ground possible with a small excavator. Doing small volume Testing of the claims with small sluice plant and panning out results.

AREA 2- FLORENCE CREEK 2 MILE LEASE

PROJECT SUMMARY

Work done in this area was frozen. Defrosting was done. Stripping moss and small trees was done in a number of areas on the 2 mile lease. Shown in the creek pictures on work map sheet. Every thing was frozen on the 2 mile lease. Stripping these pits creates defrost and thaw for future prospecting. Next season 2009 these trenches will thawed and will be ready for prospecting. Digging volume tests finding out gold and PGE values.

(3)

AREA LOCATION AND ACCESS

The project area is located 124 km NE of Whitehorse and 45km SE of Carmacks. Florence Creek is located in the Whitehorse mining district. Map 115H16. Access to the work areas is via a cat trail south of Carmacks. Crossing the Nordenskiold River bridge. Once across the bridge you turn right onto the Mt Nansen road, traveling the Nansen road you go 2 km turning left on the Buffalo lake cat road. Once on this you follow it to Buffalo lake when you cross Buffalo creek. Its another 3km to Florence creek. Here you will see old cat workings from the 80s, 90s.

PREVIOUS WORK AND EXPLORATION ACTIVITY

National Geochemical Reconnaissance (NGR) regional stream sediment geochemistry reveals a single sample, multi- element anomaly of Cu, Fe, Ni, As, Co, V on a tributary entering Florence Creek from the South. GSC Open files 1219, 1986).

Previous work done on Florence creek goes back to the early 70s. With prospectors hand trenching and sluicing. In about 1980 some more serious mining was done with equipment. Old sluice box sits on the property 3'x 24' sluice run, which was feed with a cat. This method of mining was not practical and was abandoned until 1990 when a small bobcat was walked out to Florence and some small placer anomalies of interest gold and PGE were recovered for assaying.

Due to the price of gold dropping in the 90s activity on Florence creek lost interest. In 2000 a small hand test was done, following a bedrock rim near the old sluice box. Again 2001 due to the mineral prices, this area received very little interest. Precious metals taking a huge jump in 2007 prospecting is again showing interest in Florence creek.

(4)

REGIONAL AND GENERAL GEOLOGY

The area is underlain by hornblende granodiorite and porphyritic quartz monzonite granitoid rocks. Studies of the surficial geology of the Florence Creek drainage south of Little Buffalo Lake show that McConnell age glacial and glaciofluvial deposits predominate (Huges 1989). Glacial deposits are generally composed of moraine colluvial blankets and moraine veneers on bedrock. However, glaciofluvial plain, glacialfluvial terrace and complexes of both are also present. Northerly directed melt water channels of variable length follow topographic lows.

DESCRIPTION AND SUMMARY OF WORK

AREA 1- Work began in July 2008. On TY1-8 and Boots1. Having thaw in this area it was possible to use a 10,000 lb excavator to dig test holes exposing glacial moraine at different depths to screen and load screened material into a 4 wheeler ATV dump wagon. Once this was done a 4 wheeler would haul the screened material to a small super sluice where it was dumped and stock piled for sluicing. The material was then sluiced keeping track of the yardage. The sluice runs were cleaned up and Au and Pt panned out getting placer results.

AREA 2- Work was in July and August 2008. This area is all frozen and has no workings. Using a 10,000 excavator, areas were stripped proximity 20'x60'x2' deep to frozen ground. A total of 13 pits were stripped to allow for thaw for 2009 season. The glacial moraine on surface was similar to AREA 1. With granodiorite, ultra mafic, and ultra basic boulders frozen in a matrix of smaller glacial moraine. Samples taken from the frozen trenches showed no Au and only black sand was recovered except for Pit #11. White ash was taken from here, because that is all that was thawed. It was screened out put threw a small mini rocker box than panned out, and a small piece of Au was recovered.

(5)

DISCRIPTION AND SUMMARY OF WORK

The first trip into Florence was in June 7th to break the one mile lease into claims, and to stake BOOTS 1.

Actual work began in July 9 2008, A 10,000 lb Kobota track excavator was walked from Carmacks (Rowlinson Creek) to Florence Creek 22.5 miles. Arctic Cat 4 wheeler and 1800 lb tilt ATV wagon was used to bring fuel and supplies out to Florence Creek. 2'' Honda pump, 1'x 4' super sluice box, 11/2'x 4'x4' screen was also brought in to screen material 1 1/2 ''for sluicing. A prospector (myself) and assistant worked and prospected the claims and the 2 mile lease on Florence Creek.

Area 1-The excavator was used to dig thawed granodirite and ultra mafic and basic alluvial till. Material was screened down to 1 1/2'' minus. The screened material was than loaded onto the 1800lb tilt ATV wagon. We started with loading 1/2 yards onto the dump wagon. Finding this to heavy and we down sized to 1/4 yard screened loads. The material was than brought to the super sluice and was put threw the sluice plant with the excavator or hand shoveled. The 2'' Honda pump was used to feed water to the plant from the creek for the start up. We found it easier to pump water from pit 03-01, making it easier to operate. We started off with 7 yards screened material test. Our smallest 1/4 yard screened tests. Finding gold on the TY claims and Boots1.

AREA 2:The 2 mile lease which is all frozen. Stripping of moss and trees had to be done with the excavator. Pits averaging 20' x 60 ft 2' deep were stripped and grubbed, for thawing and future testing.

More staking was done down stream joining Boots1. Boots2, 3, 4, 5, were staked. The Two mile lease was broken into claims. TC 3, 4, 5, 6, 7, 8, 9, and 10. AFE 1, 2, 3, 4, 5, 6, 7, 8, 9, AND 10. Ora 1, 2, and 3. TC1, and TC2, was staked to fill in the gap between TY8 and TC3.

(6)

PLACER

TEST RESULTS AREA 1

CLAIMS	RECOVERED
TY3 - 01-01, 7 yds screened material (100mg fines) 2 nuggets Pt? 137.1mg	716.5 mg
TY2 - 02-01, ½ yd. screened material	32.7 mg
TY3 - 03-01, ½ yd. screened material	32.8 mg
TY4 - 04-01, 1 ¼ yds. screened material	138.9 mg
TY5 - 05-01, 2 ¼ yds screened material (50 mg fines)	629.0 mg
TY5 - 05-02, 1 yd. screened material sluiced on bedrock contact (20mg fines)	554.5 mg
TY6 - 06-01, 1 yd. screened material	60.8 mg
TY3 - 07-01 ½ yd. screened material (Top of road to Florence creek)	12.2 mg
BOOTS1 - 08-01 2 - 5 gallon pails put threw mini derocker and panned	15.1 mg

TEST AREA 2: TWO MILE LEASE

July 24th R/L TC1 - Pit # 1, Dug down to frost. 21'x 60'x 2.5' - No Au, but black sand

July 25th R/L TC1 - Pit # 2, dug down to frost. 21 x 66'x 2.5' - No Au, but black sand

July 24th R/L TC2 - Pit # 3, Dug down to water. 15'x15'x 2.5' - No Au, but black sand

July 25th R/L TC3 - Pit # 4, Dug down to frost. 21'x 54'x 2.5' - No Au, but black sand

Aug.11th R/L TC4 - Pit # 5, Dug down to frost 21'x 60'x 2.5' - 1 fly s—t , black sand

Aug.12th L/L TC3 - Pit # 6, Dug down to frost 21'x 42'x 2.5 - No Au, but black sand

Aug. 13th L/L TC4 - Pit # 7, Rd. side cut to frost 15'x 15'x 4' - No Au, but black sand

Aug. 13th L/L TC5 - Pit # 8, Dug down to frost 28' x 63'x 2' - No Au, but black sand

(7)

Aug. 14th L/L TC6 - Pit # 9, Dug down to frost 27' x 60' x 2' - No Au, but black sand

Aug. 14th L/L TC7 - Pit #10, Dug down to frost 25' x 40' x 2.5' - No Au, but black sand

Aug. 15th L/L TC7 - Pit # 11. Dug down to frost 20' x 40' x 2' - No Au, but black sand

Aug. 16th L/L TC2 - Pit # 12 Dug down to frost 60' x 20' x 2' - No Au, but black sand

Aug. 16th L/L TC2 - Pit # 13 Dug down to frost 120' x 60' x 2.5' - No Au, but black sand

Aug. 19th R/L TY1 -Pit 09-01 Dug down to frost 10' x 10' x 5' - defrost for future test

Aug. 19th R/L Boots1 Pit 010-01 Dug down to frost 70' x 20' x 3' - defrost for future test

Aug. 20th R/L Boots 1 Pit 011-01 Dug down to frost 70' x 20' x 2.5' - defrost for future test
Panned out one small color in the white ash

CONCLUSIONS AND RECOMONDATIONS

All the testing, sluicing and panning on the TY's 1-8 and Boots1 had promising showings of Au and indications of Pt. The top gravels showed fine Au. Digging closer to bedrock contact Au values got better. On trench 05-02 bedrock was exposed and dug, at about 13' and the gold values doubled from trench 05-01 which was from 2ft. from surface down to 11ft from surface gravels, above bedrock test 05-02.

Trench 06-01 was fine gold on surface to 6'. From looking at old timers workings and seeing bedrock contact 20' to 25' to bedrock and with my prospecting to date on Florence. I would mention that a bedrock sample should be taken at the bottom of trench (see picture #12 field side pocket) 06-01 which is on TY6, where thawed bedrock could be exposed to do a sluice test to see if this continues else where.

More sampling should take place on the TY1 and Boots1-5 where there are old timers thawed workings from the 80's. Some defrosting trenches from 2008 will make this area a good prospect because of surface gold found on Boots1. 15.1 mg in a couple 5 gallon pails.

Claims TC 1-7 has a total of 11 trenches dug down to frost exposing 21' x 50' average 2' deep pits. These area's will be thawed out enough in summer of 2009 to dig with the excavator and prospect the thawed gravels for Au and Pt values.

(8)

FIELD ACTIVITIES FLORENCE CREEK AREA1 AND AREA2

June 6, Drove to Carmacks with 4 wheeler and ATV dump trailer loaded on dodge 1 ton and 16' trailer. Drove 4 wheeler and ATV trailer into Florence creek checking out the Florence Creek trail to see what shape it was in. Had to winch the 4 wheeler in a couple spots due to glaciers. Stayed over night, no tent just a big fire with tarps wrapped around to keep warm.

June 7, Froze last night, Was very cold never had a good sleep. Up early. I helped Ted Tellis stake his 1 mile lease into claims TY1 to TY8 claims. I staked the Boots1 claim for prospecting 2008. Drove back to Carmacks with 4 wheeler and ATV wagon..
Then to Army beach with dodge 1 ton and trailer. Arrived home late.

July 9, 10, 11, was spent walking 10,000 lb. Kobota excavator, cat training Toyota landcruiser with trailer and 4 wheeler with ATV wagon to haul fuel and prospecting supplies, from Rowlison creek lay down to Florence Creek. 22.5 miles.

July 12, Gay hauled in supplies from Toyota Landcruiser lay down which is 3 miles from Florence creek with 4 wheeler and trailer. I finished walking excavator into camp. We set up camp using Ted Tullis's old tent frame. Throwing a 30'x 30' tarp over the ridge pole and calling this home.

July 13, Gay and I did a walk around checking out the thawed areas from old workings. Looking for areas to do sluice tests. I stripped 1.5 ft. of over burden on test 01-01. Making an area to set up super sluice and settling pond. Set up 2" pump hooking up hoses. We put screen on suction hose and planted into the creek. Gay collected 5 gal. pail samples for testing from test area 01-01.

July 14, Put final touches on sluice plant. Screened out 1 1/2" material amongst Granitic, gabbro and ultra mafic boulders. The odd junks of decomposed basalt with lots of olivine was noticable. Feeding the sluice plant with the excavator. Gay tended the supersluice pulling over size rocks. We put the first 1 1/2 yards of screened material threw super sluice test 01-01. I screened another 2 1/2 yards of screened material for sluicing. I cleaned up top run getting some nice visible color.

July 15, Panned out Gays prospect samples from 01-01. Got some fine flat gold and lots of black sand. Gay and I put another 2 1/2 yards of 01-01 screened material threw the box. Gay collected more samples from different areas. Cleaned up both runs 01-01, getting gold. Sluiced total 4 screened yards 01-01.

(9)

July 16, Walked excavator to TY5 01-03 started piling up thawed material for screening. Was digging material in water so will have to let material sit and dry out before screening. Gay did some more sampling at 01-03. I lost a tooth on the excavator. I searched for it and was very luck to find it. Gay and I decided it a good idea for her to go to town and get keeper pins and some extra teeth for exc. I pulled more gravel for sluicing TY4 01-04 wet gravel well have to dry out before screening.

July17 panned out concentrate from Gays samples 01-03, 01-04. Getting gold and black sand in every sample. Looking at the tailings from sluice test 01-01, a lot of the rocks not getting washed and the over size being left behind. Loosing 30% plus gold and PGE is not getting washed, I finished pulling gravel from 01-04 stock piling material for sluice

July 17 test. Gay came back 5:30pm. We finished the screened stock pile and a total of 4 1/2 yards of screened material was sluiced to dated for 01-01.

July18. Cleaned up 1 test 01-01. Gay sampled. I dug deeper stepping down with excavator 8ft.-12ft. Screened out material 2 1/2 yards total. We sluiced the screened material. Cleaned up the runs. Gold is getting heavier. Sluiced a total of 7 screened yards for 01-01 .

July19th. Gay went sampling. I Hooked up a 1'' line ran to the sluice plant for hydrloicing in the sluice run.. Helping surging in the sluice runs. I Walked excavator to test 05-01. (old bobcat working from 1990). At 4' deep on old trench I dug down to 8' and screened material and stock piled for sluicing. I Walked excavator to 04-01.

July20th. I loaded 3 ATV wagon loads 1/4 yard loads on ATV wagon. Gay hauled to sluice plant and stock piled. We sluiced screened material from 04-01. Did a cleanup. 2 1/2 yards with over size. Nice looking color with visible Pt. Major black sand in the tailings pond from sluicing. Collected the black sand from settling pond.

July21. Gay out sampling with 5 gal. Pails, and mini rockerbox. Cleaned 4 wheeler trail to test area 02-01. Piled up pay gravels to be screened at a later date. I panned out Gays samples. Getting gold and black sand.

July22. Gay went down to creek near old sluice plant and collected samples. I took excavator and dug down deeper towards bedrock 05-02, stock piling gravel for screening. Panned out Gays samples She got nice colors and lots of black.

July23. Gay and I went up on the road bench that comes into Florence creek and took 3-5 gallon pail samples from 07 (#1 pail taken half way up 1st bench on road got couple colors and lots of black sand). (#2 pail taken flat part of bench got 1 small color, lots black sand)(#3 pail taken at road crossing Buffalo creek, got one small piece of sharp gold and lots of black sand). Walked excavator to 2 mile lease picked out a couple areas

to dig test holes. Started to dig test Pit #1 for defrosting. Gay picked me up on 4 wheeler took me back to camp.

July 24. 2 mile lease is frozen. I dug down to frost stripping moss and trees piling over burden into wind row. I finished stripping pit #1 and stripped pit #3. Gay brought fuel for the exc. She took samples in between the frozen boulders. I fueled and greased machine.

July 25. Stripped and grubbed test pit #2 and #4. Gay took more samples from surface frost. We walked further up stream looking for a creek crossing that is not steep on both sides of the creek. We found a promising place to cross at a later date.

July 26. Panned out #1, #2, #3, #4, never got any color but did get black sand. I walked excavator down stream towards camp to test pit 06-01. Pulling sluicing material with excavator up out of trench stock piling material for future sluicing. This trench is about 25' - 30' vertical from creek. A lot deeper than test area 01 or 05.

July 27. Loaded empty fuel cans and dirty clothes on ATV and 4 wheeler. Gay and I drove 4 wheeler and ATV wagon to Rawlison laydown. Went to Army Beach and cleaned out sample 01-01 and sample 05-01. Separating Au from black sand and Pt..

July 30 Gay and I fueled up jerry cans. Took fuel back out to Florence creek. I walked excavator to TY2 to screen material for morning.

July 31. Gay sampled 02-01 put the samples threw the mini derocker. I screened material for future sluicing. 7pm went back to Whitehorse for family gathering.

August 4. Gay and I went up flying in Cessna 172 doing reconnaissance flight over Florence Creek and Buffalo lake area. Went down Inciser creek and Nordenscold taking lots of photos. Getting a great visual of the glacial movement. Of all the gossans and the intrusive basalts cutting the granitics.

August 6. Gay I went back into Florence creek with 4 wheeler. I loaded up ATV wagon with two ¼ yards loads totaling ½ yard screened material 02-01. Gay stock piled at sluice plant. I walked machine to 03-01. The wet screened material has dried out nicely. Screened out material and loaded up Gay with ATV wagon and she stock piled at sluice plant for future hand sluicing.

Aug 7 I walked excavator up on the road bench that comes into Florence creek, where we found some interesting color back in July 23. 07-01 I dug test hole and screened out material and loaded 2 ATV wagons 1/4 yard each and Gay took screened material to sluice plant for sluicing at later date.

(11)

Aug. 8. I walked excavator back down to Boots1 claim cleaning up trail. Dug 3 test pits (#1 15ftx15ftx05ft frozen and wet), (#2 15ftx15ftx10ft water in pit) (#3 15ftx15ftx10ft thawed). Gay finished sluicing 02-01. We cleaned up go some interesting color.

Aug. 9. Gay hand tested Boots1 #1, #2, #3 with mini rocker. I walked excavator back to 06-01. Moving some big rocks. Stripped and grubbed a bigger area, so 4 wheeler can turn around and to screen out material. Screened material for sluicing.

Aug 10 Test 04-01 Loaded screened material on ATV wagon. 4 times ¼ yard each load. Gay hauled to wash plant. Gay started sluicing 06-01 test. Total 1 yard screened material was sluiced.

Aug11 Gay continued sluicing 06-01 feeding plant by hand. I walked excavator up stream to two mile lease. Walking to TC I dug Pit #5 21ft x 60x 2.5ft deep hit frost. Wasn't much thaw to take sample. Exposed some frozen white ash. I ribboned off a trail to the creek to walk excavator to make the creek crossing.

Aug12 Gay hand sluiced. I made environmentally friendly creek crossing creek with excavator to the R/H limit. I walked machine up stream 15 meters from high water and dug pit #6. Hit frost and digging into rounded gabbro ultra mafic and granodirite boulders.

Aug13 Gay hand sluiced Boots1 #1, #2, #3 samples. I walked excavator up stream on L/L bench cutting a side hill trench. Test #7, Piling up thawed material to do a mini rocker test for panning. I walked excavator to test pit #8 stripping down to frost. I scratched up a thawed wet sample from surface with excavator to test with mini derocker. Panned out Boots1 #1, #2, #3 samples and got interesting colors to warrant going back and stripping test pit to frost for the future testing.

Aug 14 Gay ran sluice plant sluicing. I walked excavator to pit #9 beside a huge boulder. Stripping a pit. Scratching up some frozen material for mini rocker test. Walked machine to test pit #10 to a small bench L/L that cut pit #9 bench. A little steep but using moss for footing it was possible to climb. Dug pit #10 to frost. This area looks like bedrock will be shallow. Granitic boulders, Gabbros and ultra mafics are showing up on surface in all the pits on L/Limit.

Aug 15 Gay took samples from pit #6, #7, #8, I Walked machine to test pit #11, dug to frost opening up a pit. I hit frost exposing white ash. Looking upstream from pit #11 you see TC10 and AFE1-5. Looking up stream on the bench the bench widens out flat and is only 1-2 meters from the creek. Making this area a must for testing in the future AFE 1-10 claims. Walking on foot looking for a path to walk excavator down the bench to get down to the creek, it will take some excavator time. Might be easier to follow along L/Limit staying beside the creek.

(12)

Aug.16 I Walked excavator down stream to creek crossing scratching around granitic boulder exposing frozen bedrock at pit #9 . I walked excavator down stream past pit #6 started test pit #12 digging down to frost. Walked machine up stream 60 meters and started #13 pit 15 meters from high water on creek. Once thawed out these pits #6, #7, #8, #9, #10 will all be down hill to the sluice plant.

Aug 17 Crossed creek with excavator and walked to 05-02 picking up the screen. Taking out a few trees and some boulders. I dug into decomposed granitic bedrock and screened out material for sluicing Loaded 4 wheeler with 4 loads ¼ yard each. Gay stock piled at sluice plant, Starting breaking two mile lease into claims. TC 2, 3, 4, and 5. Used 4 wheeler made it quick and easy.

Aug 18 Gay hand bombed 05-01 into the sluice plant. Than off to town she went for more fuel. I went and broke the two mile lease into claims. TC6-10, AFE 1-10, ORA 1, 2 and 3. I Panned on Florence creek going up stream while staking. Never found any colors but panned black sand in every pan. There is huge ultramafic and gabbro boulders at TC10 and AFE1. Looking up stream a wide flat bench starts here going for about ½ mile than valley slowly starts to narrow with lots of potential benches that are not to far off of the creek to prospect in the future. AFE 4 and 5 there was no over size rocks. Auger drill could be way to prospect the AFE claims because of the water table. The rocks were foot ball size being granitic, gabbro and ultra mafic. Getting to ORA1, 2 and 3 the valley starts to narrow.

Aug 19 Cleaned up sluice runs test 05-02, 2 yard total test. Nice gold. I walked machine back to boots1. On the way I dug test pit 09-01 on the TY1 claim hit thaw. On the BOOTS1 I dug down to frost 10-01 and hit frost. Walking on foot prospecting to end of bench down stream 1500' from Boots1. There is old cat trench workings with thawed ground. This area will have to be staked, for future prospecting. Walking back to excavator I could here Gay coming back with the 4 wheeler from town.

Aug 20 Gay took 2-m5 gal pails from Buffalo creek. I dug test pit 11-01 hit some thaw mostly frozen. Panned out samples got interesting color in one pail lots of black sand from Buffalo creek. Since its good access on the road coming in would be worth staking.

Aug 21 We did our final clean ups panning out concentrates. Started to put hoses and pump away. Drove up to Buffalo creek and Gay staked 2 mile lease in her name.

Aug 22 finished taking camp staked BOOTS2 and cut claim posts for BOOTS 3, 4, 5, will have to come back to finish staking the boots claims because we don't have any POA's in the Whitehorse district. We finished packing up drove 4 wheeler and ATV wagon to Ted's hill 11 miles from Florence creek camp. It was raining and we spun out on Ted's hill leaving the ATV wagon and some supplies behind. We got home 1am Army Beach.

(13)

Sept.23 Gay and I went back to Florence creek with 4 wheeler. Gay and I finished staking TC1 and BOOTS 2, 3, 4, and 5 claims Stayed over night.

Sept. 24 Dug out mini derocker, gold pans and shovel, for helicopter trip with Bill Labarge. Left for Army beach.. Arriving Ted's hill, 11 miles from Florence Creek. We hauled all the belongings left behind from August 23 prospect up the hill and loaded up the ATV wagon and drove to Rawlinson creek lay down. Loading everything onto 12' trailer and dodge 1 ton. We arrived at Army beach late.

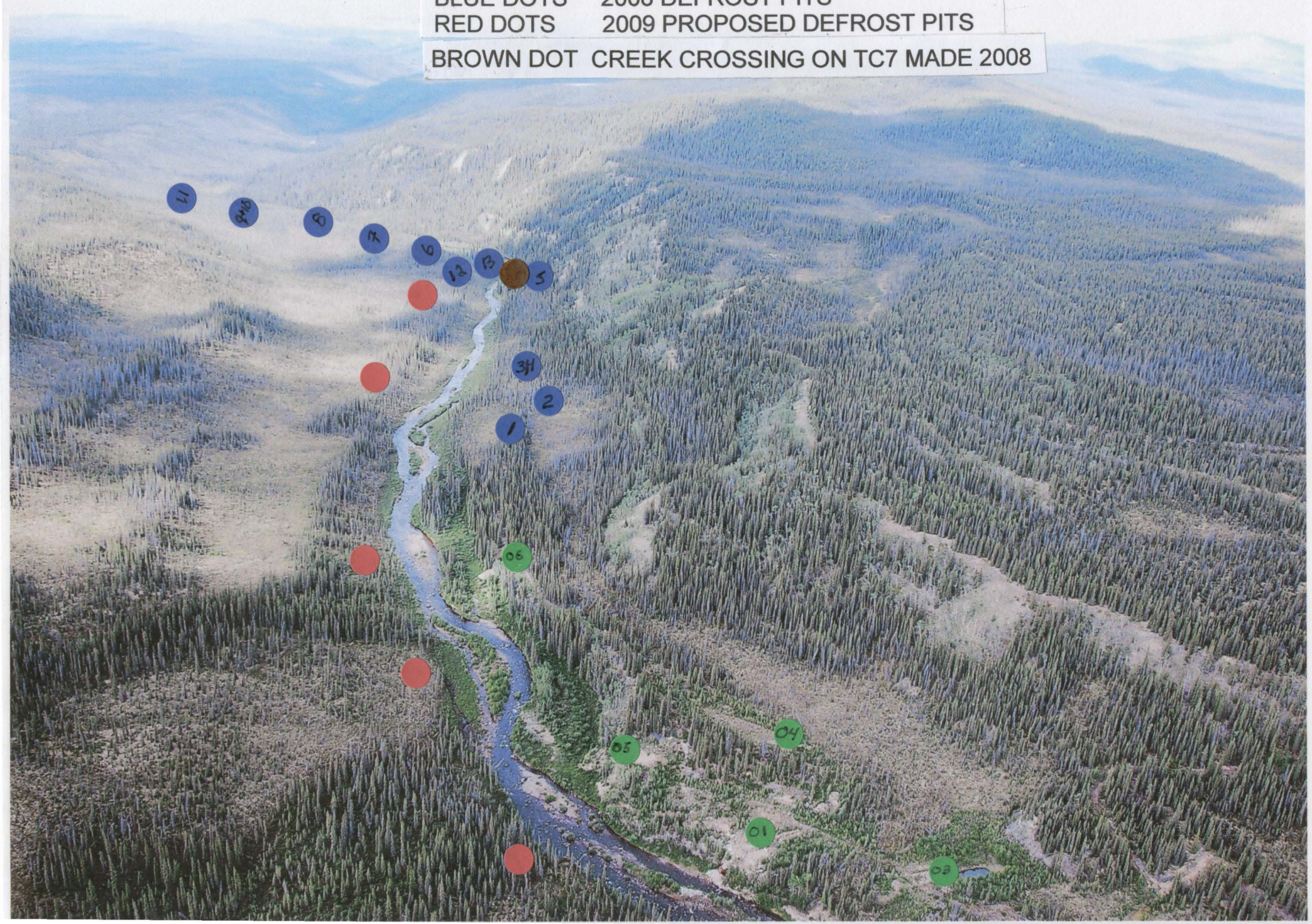
Sept.26 Gay and I drove to Carmacks and did a reconnaissance flight with Bill Labarge in helicopter. Landing at camp we did some sampling with mini rocker and panned. We flew up to the head waters of Florence landing at Rusty canyon and right fork panning the creek. We flew down stream checking out potential placer areas landing at the bend Florence and Inciser and did some panning.

Nov. 12, 13, 14 finished panning and separating black sand from Au.samples.
01-01- 2hrs, 02-01- 2 hrs ,03-01- ½ hr.,04-01- 1.2hr, 05-02, 2hrs ,06-01-1/2hr,
07-01-1/2hr, 08-01-1/2hr.

Total 8 1/2hrs

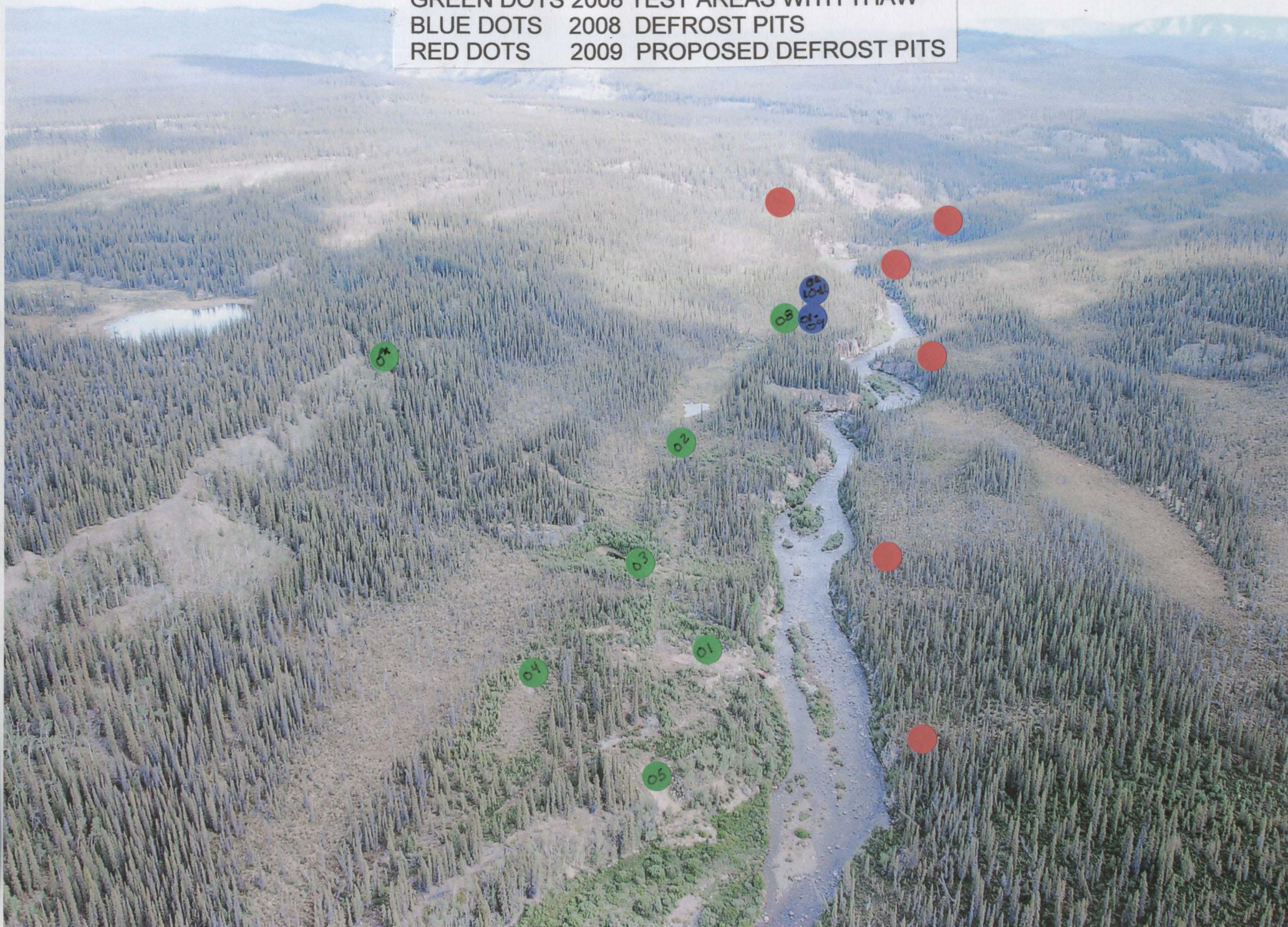
Nov, Dec. 2008 worked on Submission report for Diamond Tooth Resources hrs ?

FLORENCE CREEK WORK SITES 2008
LOOKING UP STREAM FROM OLD SLUICE BOX
GREEN DOTS 2008 TEST AREAS WITH THAW
BLUE DOTS 2008 DEFROST PITS
RED DOTS 2009 PROPOSED DEFROST PITS
BROWN DOT CREEK CROSSING ON TC7 MADE 2008



FLORENCE CREEK WORKS SITES 2008
LOOKING DOWN STREAM FROM OLD SLUICE BOX

GREEN DOTS 2008 TEST AREAS WITH THAW
BLUE DOTS 2008 DEFROST PITS
RED DOTS 2009 PROPOSED DEFROST PITS



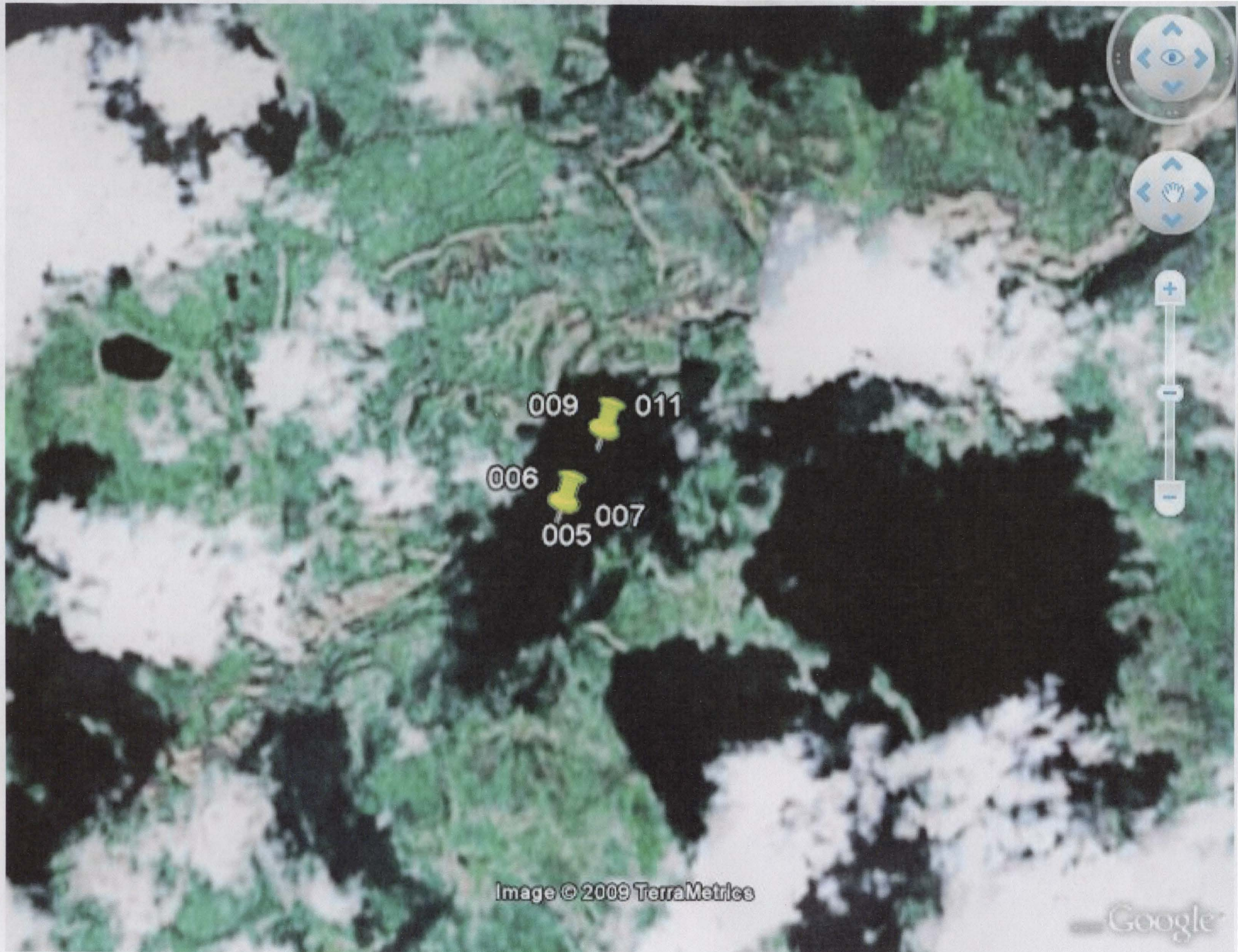


Image © 2009 TerraMetrics

Google



#1

1ST. TRIP TO FLORENCE JUNE 7TH 2008



#2

CAMP AT FLORENCE 2008



#3

TEST 05-01 2008 FLORENCE CREEK



#4

SCREENING OVER SIZE TO 1 1/2"



#5

LOADING ATV WAGON FOR STOCK PILE



#6

STOCK PILING PAY GRAVELS FOR
SLUICING



#7 SLUICING WITH 2" PUMP



#8

03-01 2" HONDA PUMP AT WATER HOLE



#9
BLACK SAND FROM TEST SLUICING



#10 TESTING WITH MINI DEROCKER



#11

05-02 BEDROCK CONTACT TIP OF BAR



#12

06-01 OLD TIMERS CAT TRENCH



#13

BOOTS1 DEFROST FOR 2009 SEASON



#14

R/LIMIT CREEK CROSSING TC7 CLAIM



#15
DEFROST PIT #11 RED DOT ON TREE IS
LOOKING OVER TC10 AND AFE1



#15

DEFROST PIT #11

LOOKING FROM #11 DEFROST PIT, AT

TC10 AND AFE1

01-01
616.5 mg
7 yards screened



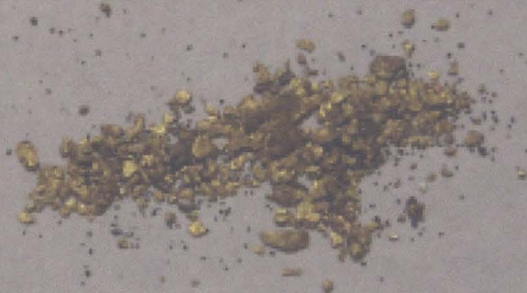
#16

01-01 SURFACE TO 11' DEEP. COURSE
GREY PIECES WG. 137.1MG,PT?

05-01

579. mg

2 1/2 yds screened



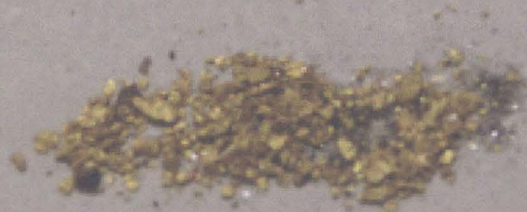
#17

05-01 TOP GRAVELS 1'-11'

05-02

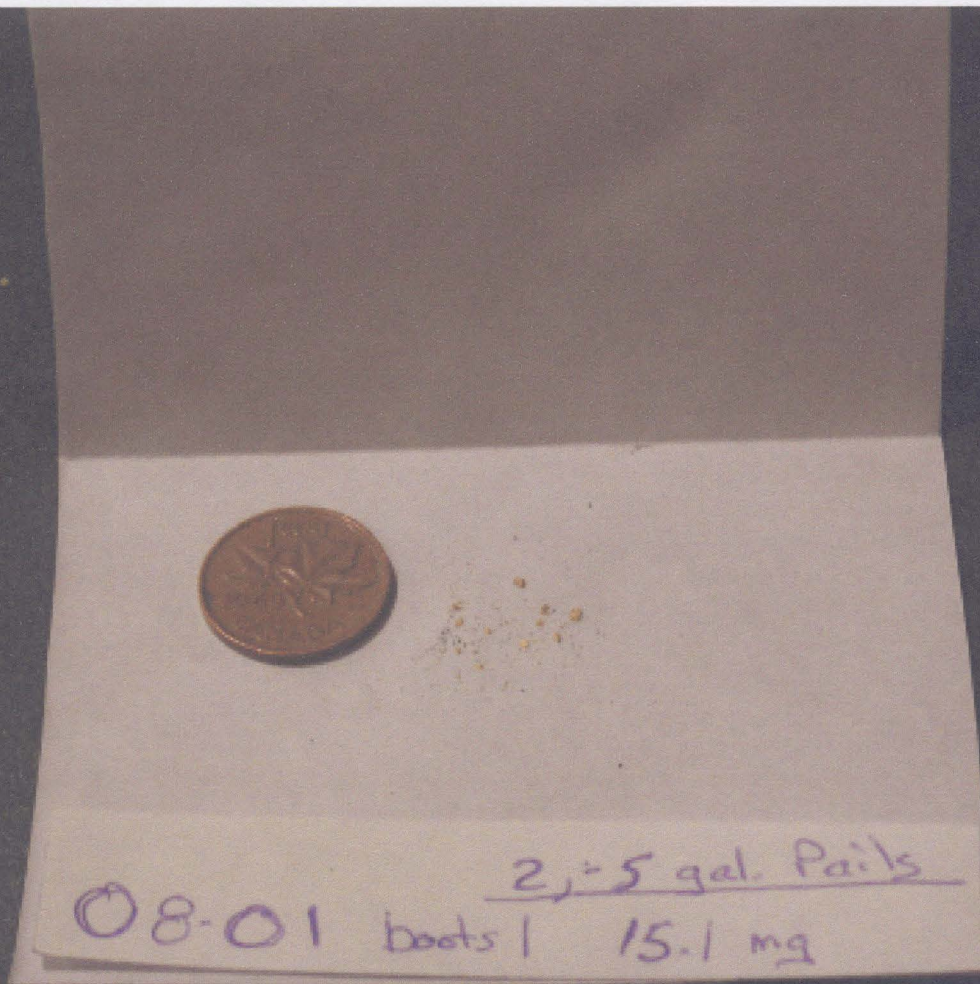
534.5 mg

Bedrock contact
1 yard screened



#18

BEDROCK CONTACT REFER. PIC. #11



#19

FROZEN SURFACE PAY BOOTS1