

08-045

Rancheria Area - Final Report
2008 YMIP FUNDING
UNDER THE FOCUSED
REGIONAL MODULE

PREPARED FOR:
TANANA EXPLORATION INC.
27 TUTSHI ROAD
WHITEHORSE, YUKON
Y1A 3R4

BY:
WADE CARRELL
FEBRUARY 2009

INTRODUCTION

This report outlines basic exploration work directed at appraising the regional mineral potential of the Rancheria area in south- eastern Yukon. The exploration work was carried out during the 2008- field season and is based on research completed by Wade Carrell, whose statement of qualifications is appended to this report. Personnel involved in the project were Wade Carrell and 1 contract worker.

PROJECT LOCATION

The project area is centered on Spencer Creek in the Rancheria area of the southeast Yukon. It is located on the Wolf Lake map sheet and covers parts of NTS map sheets 105 B 1, 2, 7 and 8 and is roughly located between 60° 00' to 60° 20' N Latitude by 130° 15' to 130° 55' W Longitude. Laying within the Watson Lake Mining District the majority of the area, except for that which is claimed by the Liard First Nation in the Boulder Creek area (near the center of the project area) and a few scattered blocks of Quartz mineral claims, is vacant Crown Land (see Appendix A for target locations, regional geology and magnetic maps). Current claim sheets and claim status reports are attached.

AREA ACCESS

From Whitehorse, area access is best accomplished by road east on the Alaska Highway to the Rancheria area, a distance of approximately 270 km one way. Further access to the various targets within the project area will utilize existing mining roads consisting of 4x4 and quad trails that leave the highway to the north and south at various points between Continental Divide and Watson Lake and provide direct access to the various targets outlined below.

EXPLORATION MODELS

The main target of exploration within the project area focused on a variety of copper-gold-silver-lead-zinc mineral deposit types, principally represented by two main deposit types, consisting of carbonate replacements and polymetallic veins in faults and shear zones.

TARGET DESCRIPTIONS

Precious and base metal mineralization occurring within Paleozoic sedimentary rocks and Cretaceous plutonic rocks as veins and replacement lenses is well documented throughout the

Rancheria area within and along both margins of the Cassiar Batholith (see generalized Regional Geology, Appendix A). Numerous occurrences (30+) were discovered during two main periods of exploration in the late 1970's and the mid to late 1980's that dominantly contain silver-rich galena, sphalerite, pyrite and chalcopyrite as well as lesser amounts of arsenopyrite, freibergite, tetrahedrite and pyrrhotite.

Mineralization appears to be structurally controlled by northeast-southwest jointing and to a lesser extent, by the lithological contact between limestone and phyllite. It is attributed to the migration of hydrothermal solutions migrating along the jointing and is readily identified in the field by the presence of iron and manganese gossans.

Research has identified several areas of interest within the regional, which are shown in Appendix A and are described below. Details of specific mineral occurrences within these areas are provided as summary copies from the MINFILE database and are attached as Appendix B.

TARGET AREA # 1 – Located at approximately 60°10'N to 60°15'N Latitude between 130°20'W to 130°35'W Longitude on the border between map sheets 105B-01 and 02 in the headwaters area of Spencer Creek. This target area is underlain by Paleozoic limestone, phyllite and schist, near the contact with the Cassiar Batholith along its eastern margin. A total of seven showings, including four drilled prospects have been identified in this area. Lenses of massive galena and polymetallic veins containing sphalerite, galena, chalcopyrite and siderite occur in northwest trending faults. Mineralization has been previously exposed over hundreds of meters of strike length, which at times is present in widths of up to 4 meters. Historic reports of massive galena-sphalerite boulders in the area have apparently never been traced back to a bedrock sources (Minfile Occurrences 105B 060, 116, 117, 118, 122 & 133). Prospecting in conjunction with soil/till sampling was carried out in an attempt to identify the source of the high-grade boulders as well as possibly other previously unrecognized occurrences. Late in 2005 two small claim blocks were staked to protect the Lena (Minfile # 105B122) and Schellenburg (Minfile # 105B133) occurrences. Additional claims were staked in 2007 to spoil the area. Small orientation ICP/MMI soil surveys were done on the Berg, J T, Lena and Ophir claims in 2007 to test the reliability of this new geochemical analysis. Results from off claim samples indicate extensive mineralization in the area. Due to budget constraints this area was not visited in 2008.

TARGET AREA # 2 – Located at approximately 60°03'N to 60°05'N Latitude/130°50'W to 130°51'W Longitude on map sheet 105B-02 and easily accessible by 4x4 truck, this area occurs adjacent to the Alaska Highway near Continental Divide Lodge (5km West). Placer gold was

discovered on Carlick Creek in 1974 by Mr. H. Hibbing. Various operators in the area throughout the 1980s found variable amounts of silver and zinc mineralization at or near the contact of the Cassiar Granite Batholith and the cloritic- schists on its western margin. Two major fault zones intersect at the confluence of Carlick Creek and the Rancheria Rift Valley. Several splay faults in the vicinity carry values to 5.6 oz/t silver, 2.2% lead and 15.9% zinc. Except for two claims held by Mr. Hibbing this target area was vacant crown land. Porcupine Creek follows the Cassiar Fault north of the Rancheria Rift. Prospecting and a silt sampling survey across the fault structures north and south of the rift were completed to test for further extensions of the known mineralization along various fault structures. Assays are pending.

TARGET AREA # 3 – Located at approximately 60°00'N to 60°03'N Latitude/135°23'W Longitude on map sheet 105B-01, which is accessible from the Alaska Highway by 4x4- road. This area lies immediately south of a drill indicated 3 to 7 million ton silver, lead and zinc deposit on the Wildcat claims (Minfile 105B-001, Star occurrence), which was discovered in 1983 during drilling of a significant EM anomaly by Butler Mountain Minerals Inc. Geophysics carried out during that time period indicated a significant EM signature further to the south which research suggest has apparently never been followed up. Interestingly, mapping of this area indicates a fault perpendicular to and running off the Dale fault, coincident with the unexplained geophysical anomaly in this area. Prospecting and geochemical soil/till sampling are proposed to investigate these prospective and coincident features. Late in the 2004 exploration season, the company staked a row of claims to protect this target in anticipation of carrying out the exploration program outlined above. Stream sediment and till geochemistry surveys were carried out over this ground in 2005. A small orientation ICP/MMI soil survey was done in 2007. Results from the north end of the claim block were disappointing. However anomalous values of copper, gold and silver were returned from a soil line south of the claims near the B.C. Border. This area should be considered as a reconnaissance target. Additionally a similar fault structure lying immediately to the east on vacant Crown Land was to be investigated as part of regional reconnaissance of this target. This area was not visited in 2008, due to budget constraints.

TARGET AREA # 4 – Located at approximately 60°15'N to 60°18'N Latitude/135°13' W to 135°22' W Longitude on map sheet 105B-08, this area is road accessible via the Spencer Creek road and is situated 38 km north of the Alaska Highway. Previously described as Minfile Occurrence #105B 114, this area was investigated by Regional Resource Ltd in the early 1980's. The OXIDE - ZONE, was protected, by staking, completed by Tanana, late in 2004. Limited prospecting, geochemical till sampling and chip sampling, of the trenches was done in 2005. I

returned to the area in 2006 to investigate the geology north of the main showing. I found an extensive area of massive silica rich rocks which exhibit characteristics similar to jadeite. Only seventeen man days were spent hand trenching and sampling the oxide zone in 2008.

PROJECT RATIONALE

An abundance of under-explored and un-staked high-grade silver-lead-zinc and gold targets are known to exist within this region, which is easily accessible directly from the Alaska Highway, in an area that has not seen any significant exploration activity for nearly 20 years. During two previous periods of historic exploration in this region, work was highly concentrated on a few specific occurrences. Little or no follow-up work on targets identified peripheral to these occurrences on the extensive claim holding of a small number of companies which blanketed the area was carried out and many of these claims were held afterwards by payments in lieu of work for extended periods of time. Numerous historic assessment reports that have been incorporated into the MINFILE database are available on line and for viewing in the library at the Elijah Smith building. Research of these reports has lead to the identification of most of the targets described in this regional reconnaissance report.

DESCRIPTION AND TYPE OF WORK

A regional exploration program for various types of Ag, Au, Cu, Pb & Zn mineralization was undertaken in the previously described target areas during the 2008 field season. The project was to rely heavily on ongoing detailed research and a program of targeted geochemical silt, soil/till and rock sampling surveys and prospecting to vector targets for a more detailed follow-up program and ground geophysics. Picks and shovels were used for hand trenching and pit sampling for soils and till. A shovel, ½" screen, 2 plastic buckets and a gold pan were used for collecting stream silt samples. Prospector's rock hammers were used to collect rock samples. All samples collected were placed in plastic sample bags and delivered to Eco Tech Lab in Whitehorse for sample prep. After drying, crushing and screening, 15 gram samples were sent to Eco Tech Laboratory in Kamloops, B. C. for aqua regia digestion and 32 element ICP fire assay. Sampling was initiated as soon as local conditions permitted within the areas described above and as shown on the Claim map sheets in the map pocket at the end of this report.

Targeted geochemical sampling of silt, soil & rock was carried out in the priority areas described above using techniques employed by the Yukon Geological Survey. Detailed prospecting and sampling of representative lithologies was carried out in conjunction with silt/till

sampling and any mineralized float or outcrop discovered was prospected and sampled immediately.

~~Due to the stock market crash and immediate budget constraints only 24 rock samples and 8 silt samples were sent to Echo Tech Lab in Kamloops, for standard ICP multi-element analysis. Detailed follow-up and investigation of anomalies detected during the initial exploration phase were to be undertaken on a priority basis after compilation of the analytical results and the collected geological data. Phase two exploration activities were canceled.~~

~~Phase 1 reconnaissance and sampling took 34 man days and \$19,023.40 was spent to complete this work (a Detailed Project Budget is presented as Appendix C). Budgeting for Phase 2 assumes correction of stock market woes in the future.~~

ENVIRONMENT/RESOURCES

No special environmental/resource concerns are known for any of these areas. The Department of Indian and Northern Affairs has implemented land use regulations in the Yukon Quartz Mining Act. Under these regulations, approval of a land use permit will be required prior to commencing any exploration activity that exceeds the Class 1 threshold (Class 1 activities are exempt). The work currently completed will not exceed the Class 1 threshold and thus activities in these areas adhered to the operating conditions set out in Schedule III of the Yukon Quartz Mining Land Use Regulations and follow reclamation techniques set out in DIAND's Handbook to Reclamation Techniques in the Yukon for camp sites and control of erosion associated with trenching. Native land tenure and title rights were respected on any claimed land adjacent to the project areas and any environmental concerns were addressed through strict adherence to the Operating Conditions of the Mining Land Use Regulations for Class I, II, III and IV Programs. In addition any camp areas were properly maintained by following guidelines for no-trace camping and all garbage was properly handled and removed from the areas during and upon completion of each project. Of up most importance was the maintenance of water quality standards in the areas by ensuring that creek banks were not disturbed and/or eroded and that wash and human waste disposal areas did not contaminate any ground water sources.

DESCRIPTION OF SUPPORTING DATA/RESULTS

Find attached to this report:

YMIP Final Submission Form; A detailed summary of all expenditures incurred during the exploration program, tabulated by dates, recipients of payment, nature of expense and the amount, supported by accompanying receipts or invoices not previously submitted; A daily log outlining the work activity for each day, including dates worked and a description of the work accomplished. This log will be accompanied by copies of detailed field notes and traverse maps showing the location of work performed, observations made, etc.; Maps and plans indicating the location of all work performed and samples taken; Copies of all assay certificates and analytical results.

CONCLUSIONS AND RECOMMENDATIONS

Chip sampling of the trenches dug across the Oxide Zone on the Meister Silver property, reflects similar values taken from the cat trenches across this zone previously.

Pan concentrates from samples taken on Carlick and Porcupine Creeks indicate potential for placer gold to be concentrated in the gravels of both of these streams. However no promising results came from rock samples taken in the immediate area. Follow – up prospecting is recommended for Porcupine Creek. Claims staked on Carlick Creek in 2008 will be allowed to lapse to avoid any conflict with other claim holders.

Until stock market conditions improve, Junior and Major mining companies find funding or the price of gold and silver skyrocket, no further work is recommended in this area.

REFERENCES

AMUKUN, S.W., AND LOWEY, G.W., 1987. Geology of Sab Lake (105 B 7) and Meister Lake (105 B 8). DIAND Open File 1987-1.

CANADIAN OCCIDENTAL PETROLIUM LTD., 1980. Assessment Report #090629 by E.J. Sacks

CANADIAN OCCIDENTAL PETROLEUM LTD., 1981. Assessment Report #090841 by R.M. Kuehnbaum.

DEKLERK, R. and TRAYNOR, S. (COMPILERS), 2004. Yukon MINFILE – a database of mineral occurrences. Yukon Geological Survey, CD-ROM.

EMPEROR MINES LTD, 1968. Assessment Report #018615 by D. Rees and H. Yen.

GORDEY, S.P. and MAKEPEACE, A.J., 2003. Yukon Digital Geology, version 2.0, S.P. Gordey and A.J. Makepeace (comp); Geological Survey of Canada, Open File 1749 and Yukon Geological Survey, Open File 2003-9(D).

HIBBING, H., Sep/88. Assessment Report #092527 by H. Hibbing.

LEE, G., Jul/97. Assessment Report #093738 by M.A. Power.

LISTED VENTURES INC, Sep/87. Assessment Report #092111 by G.S. Davidson and R.C.R. Robertson.

LISTED VENTURES INC, Jan/89. Assessment Report #092615 by G.E. Nicholson.

LOANN SILVER MINES LTD, 1982. Assessment Report #091054 by V. Cukor.

LOWEY, G.W. AND LOWEY, J.F., 1986. Geology of the Spencer Creek (105 B 1) and Daughney Lake (105 B 2) map areas, Rancheria District, Southeast Yukon. DIAND Open File 1986-1.

MINERAL HILL MINES LTD, 1971. Assessment Report #060876 by W.A. Fowers.

REGIONAL RESOURCES LTD, May/82. Assessment Report #091028 by C.G. Verley and M.H. Sanguinetti.

REGIONAL RESOURCES LTD, Dec/82. Assessment Report #091419 by M.H. Sanguinetti and B.A. Youngman.

REGIONAL RESOURCES LTD and GETTY CANADIAN METALS LTD, Mar/84. Assessment Report #091518 by M.H. Sanguinetti.

REGIONAL RESOURCES LTD, Dec/84. Assessment Report #091589 by M.A. Stammers.

REGIONAL RESOURCES LTD and GETTY CANADIAN METALS LTD, Mar/85. Assessment Report #091614 by M.A. Stammers.

UNITED KENO HILL MINES LTD, Nov/85. Assessment Report #091668 by T.C. Stubens.

YUKON GEOLOGICAL SURVEY WEBSITE – MAP GALLERY

APPENDIX A

TARGET AREA LOCATION MAPS
REGIONAL GEOLOGY MAPS
MAGNETIC MAPS

APPENDIX B

MINFILE OCCURRENCE SUMMARIES

APPENDIX C

PROJECT BUDGET
ACTIVITY LOG
ASSAY CERTIFICATES
SAMPLE LOCATION MAPS

APPENDIX D

STATEMENT OF QUALIFICATIONS

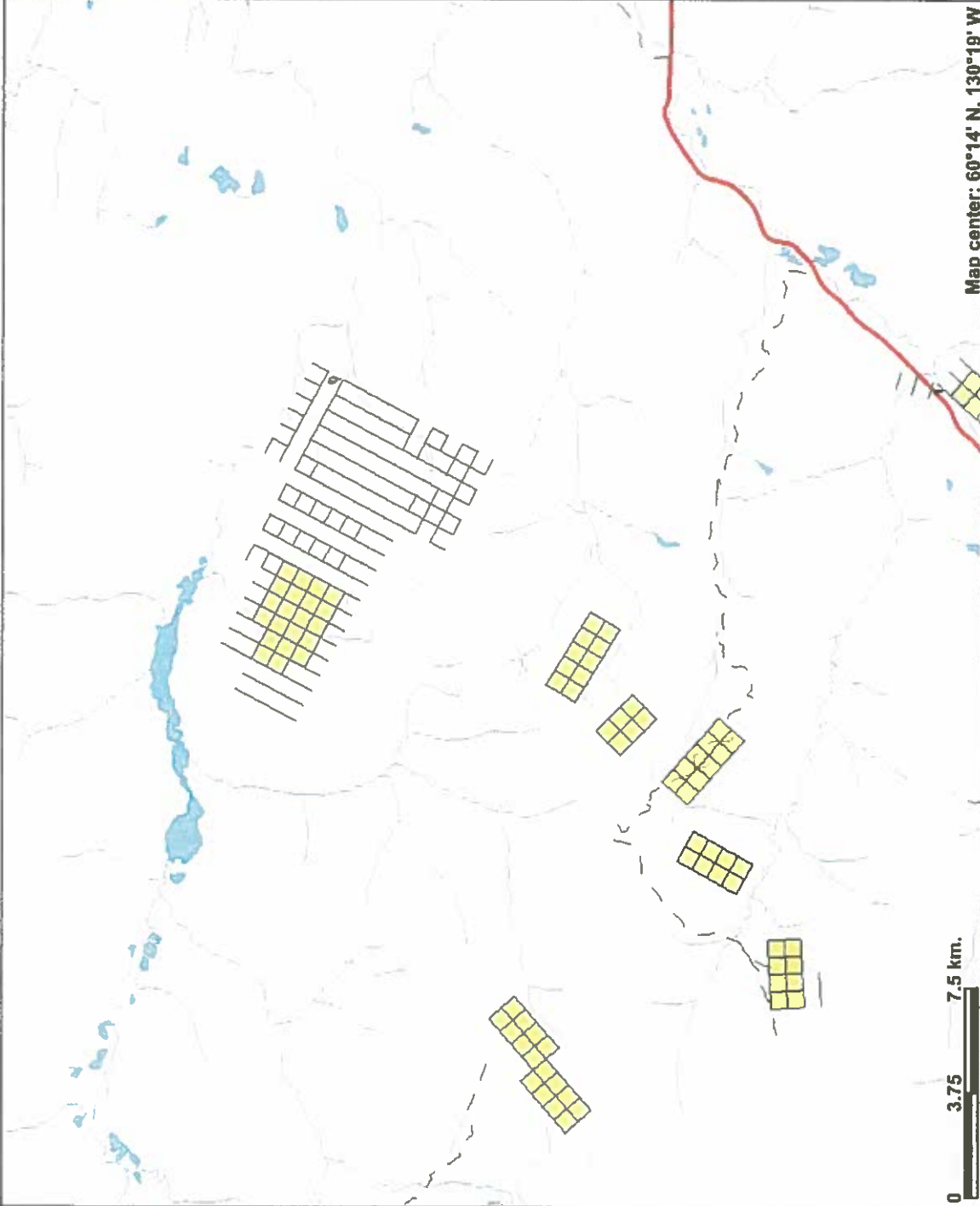
Rancheria - North Property Locations



Legend

- Yukon Border - Surveyed
- Quartz Claims
 - Active
 - Expired
- Land and Sea
 - Ocean
 - Yukon
 - Other

Scale: 1:217,172



Map center: 60°14' N, 130°19' W

0 3.75 7.5 Km.

This map is a user generated static output from an Internet mapping site and is for general reference only. Data layers that appear on this map may or may not be accurate, current, or otherwise reliable. THIS MAP IS NOT TO BE USED FOR NAVIGATION.

Rancheria - North Regional Geology Map



Legend

Yukon Border - Surveyed

Quartz Claims

- Active
- Expired

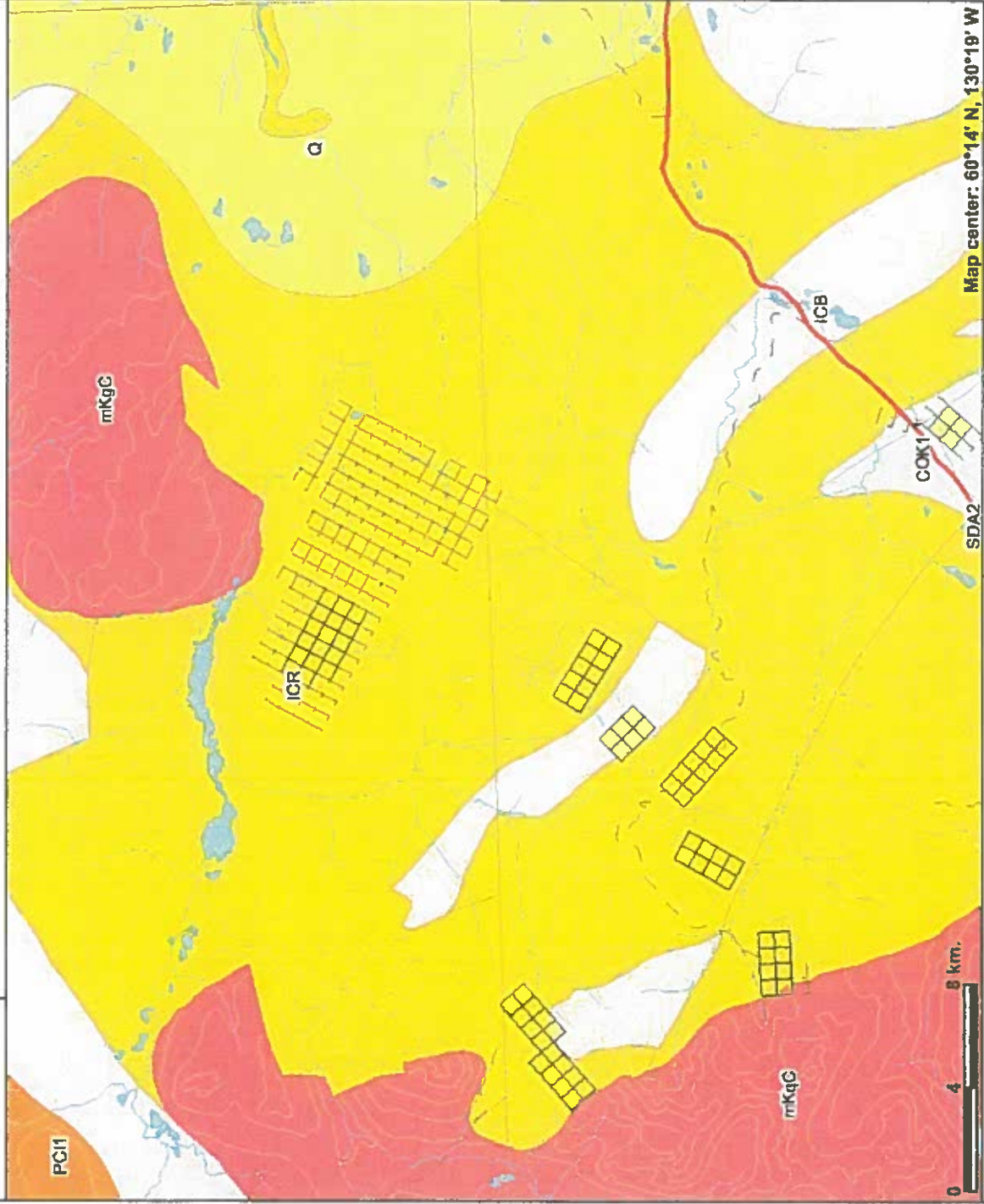
Land and Sea

- Ocean
- Yukon
- Other

Bedrock Geology - Regional Unit (250K)

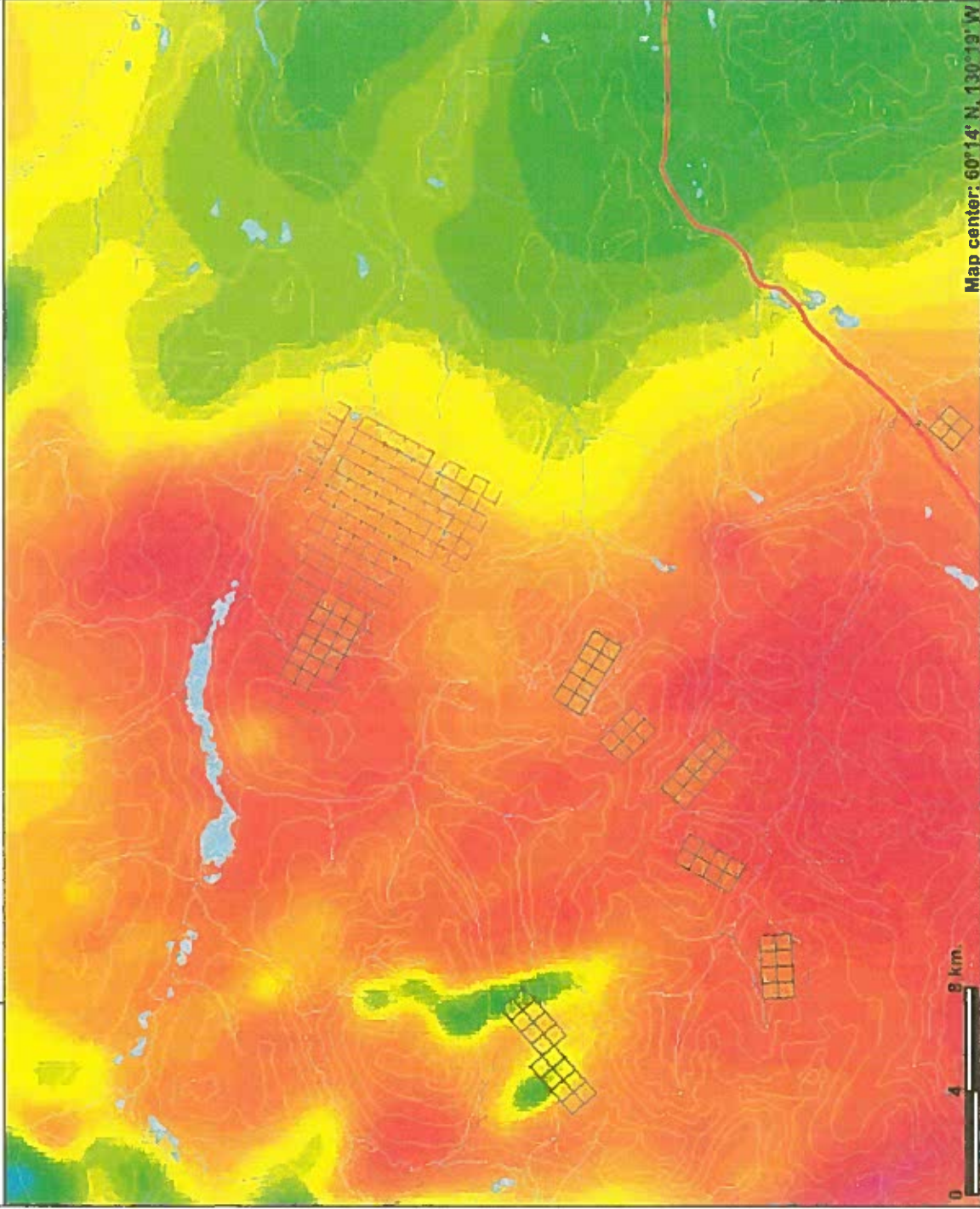
- CDB1
- CDB2
- CDB3
- CDR
- CDR1
- CDR2
- CDR3
- CDR4
- CDR5
- CDR6
- CDS1
- CDS2
- CDS3
- CDS4
- CDS5
- CE
- CH1
- CH2
- CK
- CK1
- CK2
- CK3
- CK4
- CKY
- CL

Scale: 1:233,615



This map is a user generated static output from an internet mapping site and is for general reference only. Data layers that appear on this map may or may not be accurate, current, or otherwise reliable. THIS MAP IS NOT TO BE USED FOR NAVIGATION.

Rancheria - North Geophysical Map

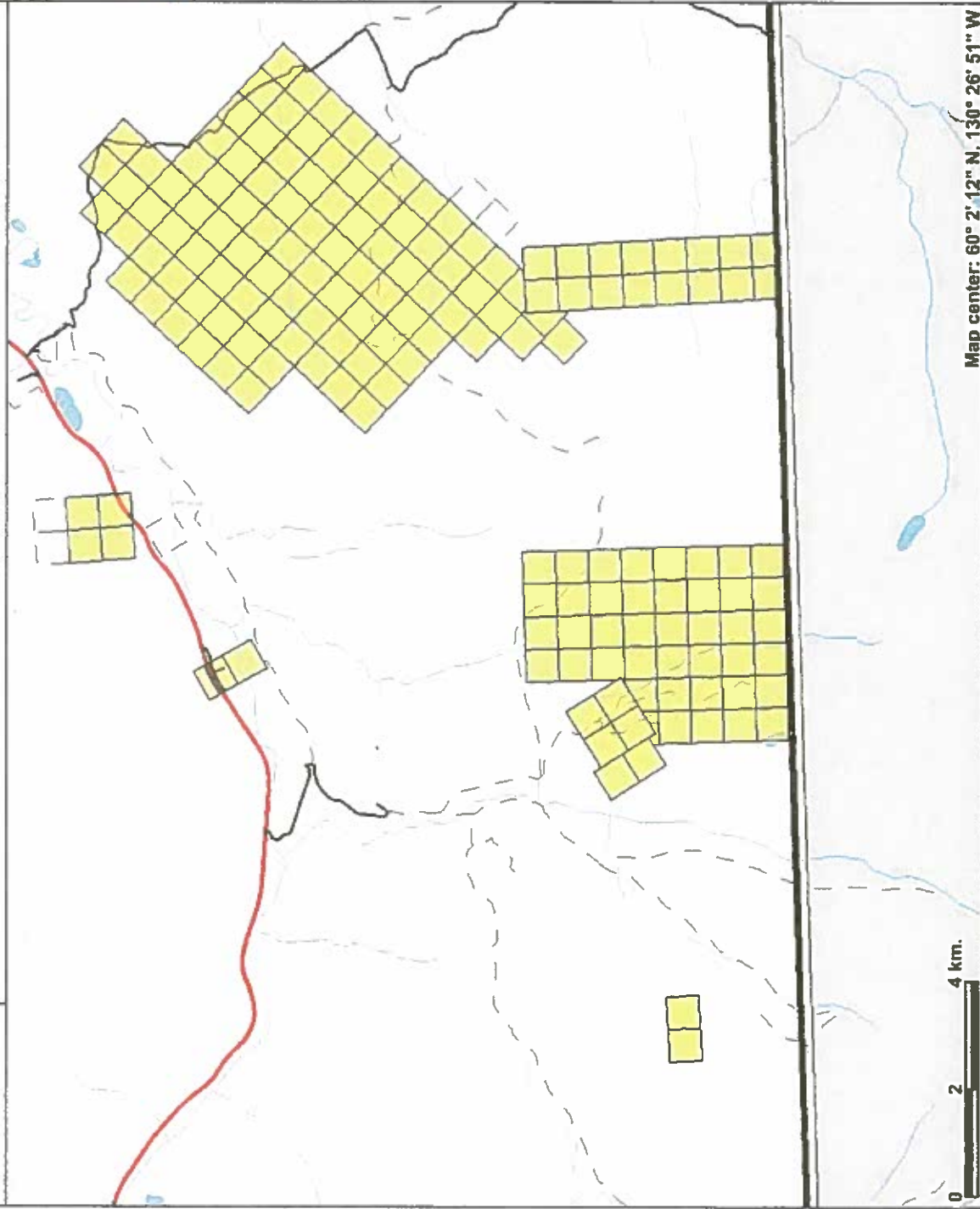


- Legend**
- Yukon Border - Surveyed
 - Quartz Claims
 - Active
 - Expired
 - Land and Sea
 - Ocean
 - Yukon
 - Other
 - Geophysics Residual Total Field Raster

Scale: 1:233,615

This map is a user generated static output from an internet mapping site and is for general reference only. Data layers that appear on this map may or may not be accurate, current, or otherwise reliable. THIS MAP IS NOT TO BE USED FOR NAVIGATION.

Rancheria - South Property Locations

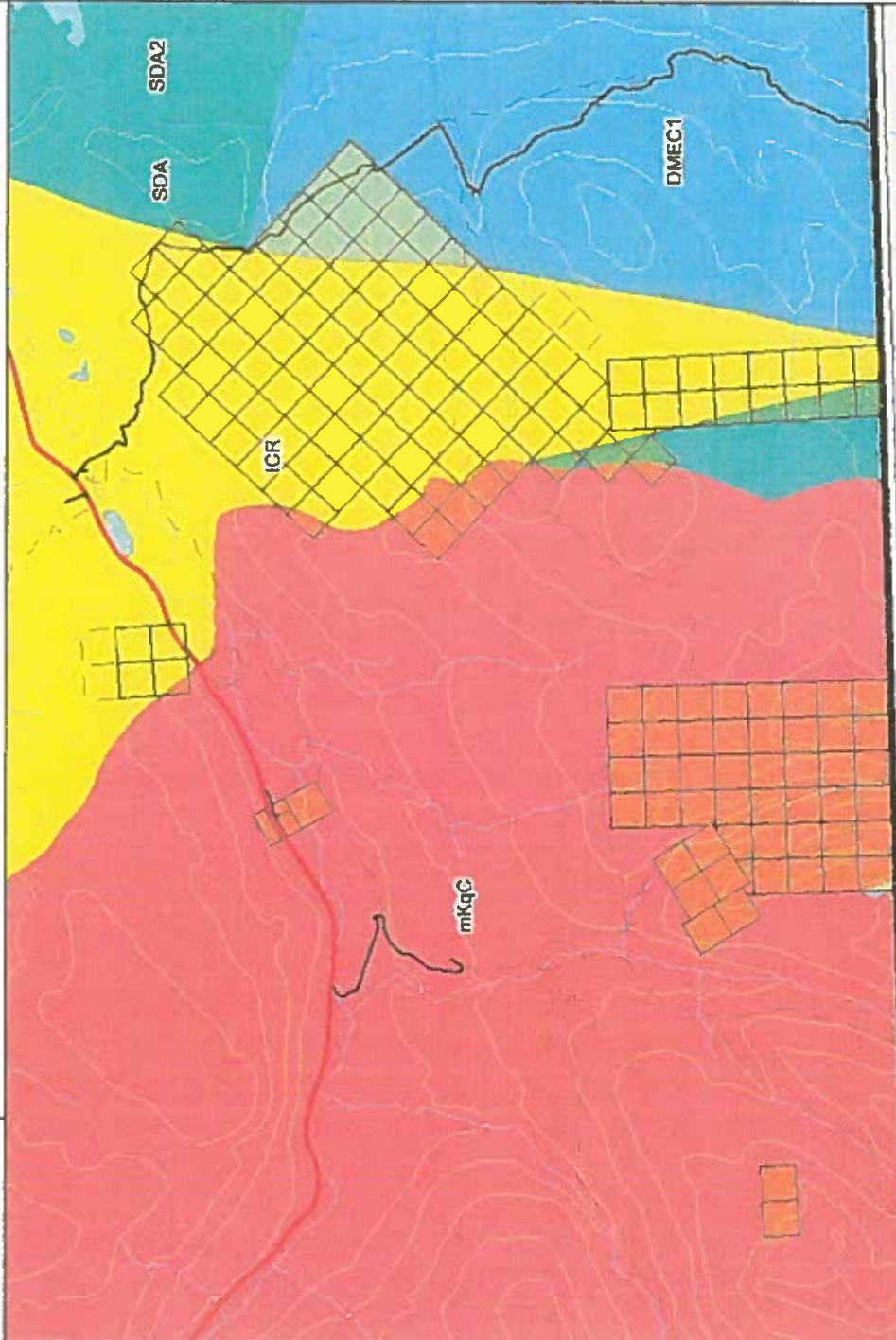


- Legend**
- Yukon Border - Surveyed
 - Quartz Claims
 - Active
 - Expired
 - Land and Sea
 - Ocean
 - Yukon
 - Other

Scale: 1:112,624

This map is a user generated static output from an Internet mapping site and is for general reference only. Data layers that appear on this map may or may not be accurate, current, or otherwise reliable. THIS MAP IS NOT TO BE USED FOR NAVIGATION.

Rancheria - South Regional Geology Map



Legend

Yukon Border - Surveyed

Quartz Claims

- Active
- Expired

Land and Sea

- Ocean
- Yukon
- Other

Bedrock Geology - Regional Unit (250K)

- CDB1
- CDB2
- CDB3
- CDR
- CDR1
- CDR2
- CDR3
- CDR4
- CDR5
- CDR6
- CDS1
- CDS2
- CDS3
- CDS4
- CDS5
- CE
- CH1
- CH2
- CK
- CK1
- CK2
- CK3
- CK4
- CKY
- CL

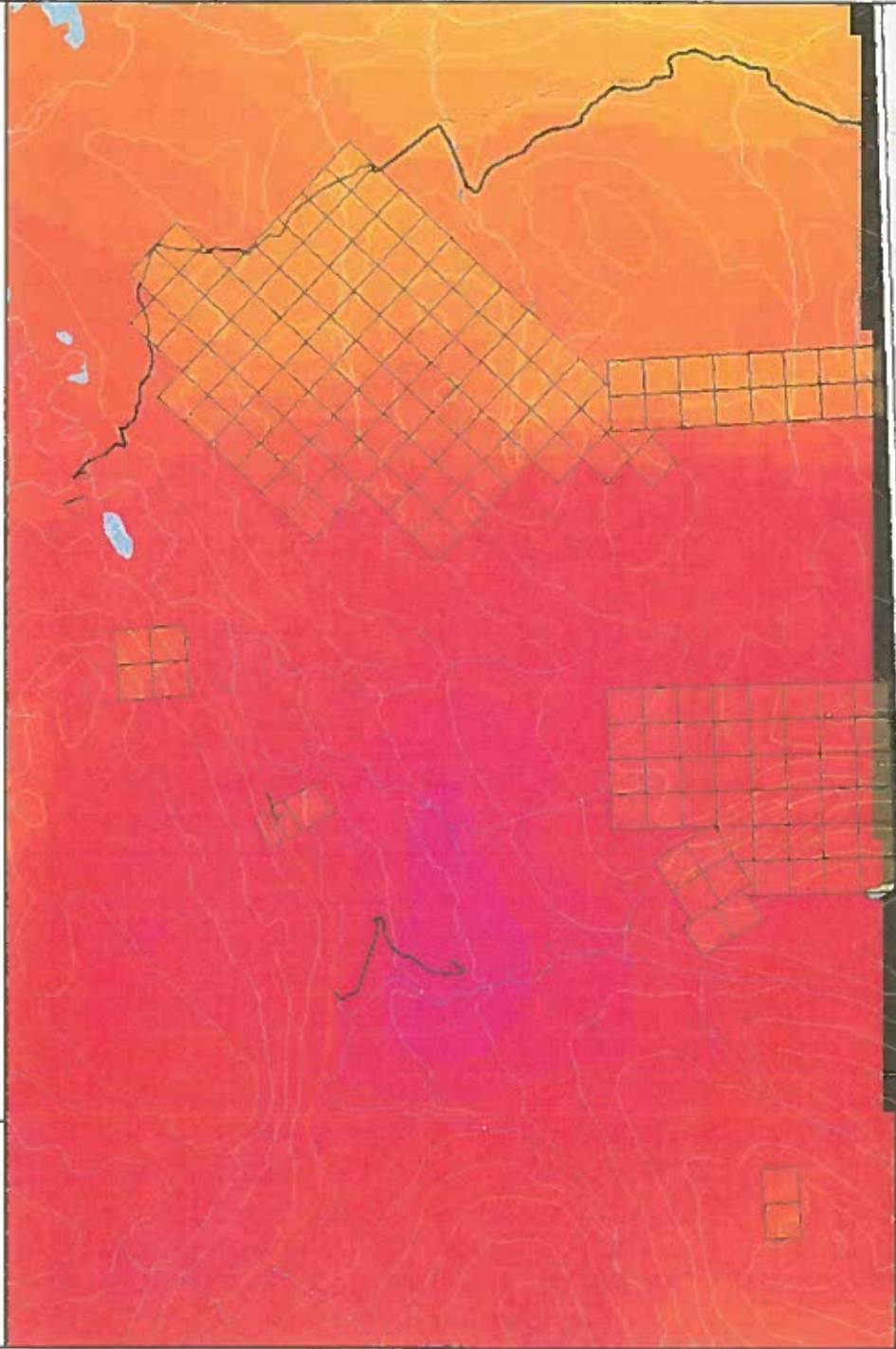
Scale: 1:116,807

Map center: 60°2' N, 130°25' W

0 2 4 km.

This map is a user generated static output from an internet mapping site and is for general reference only. Data layers that appear on this map may or may not be accurate, current, or otherwise reliable. THIS MAP IS NOT TO BE USED FOR NAVIGATION.

Rancheria - South Geophysical Map



Map center: 60°2' N, 130°25' W



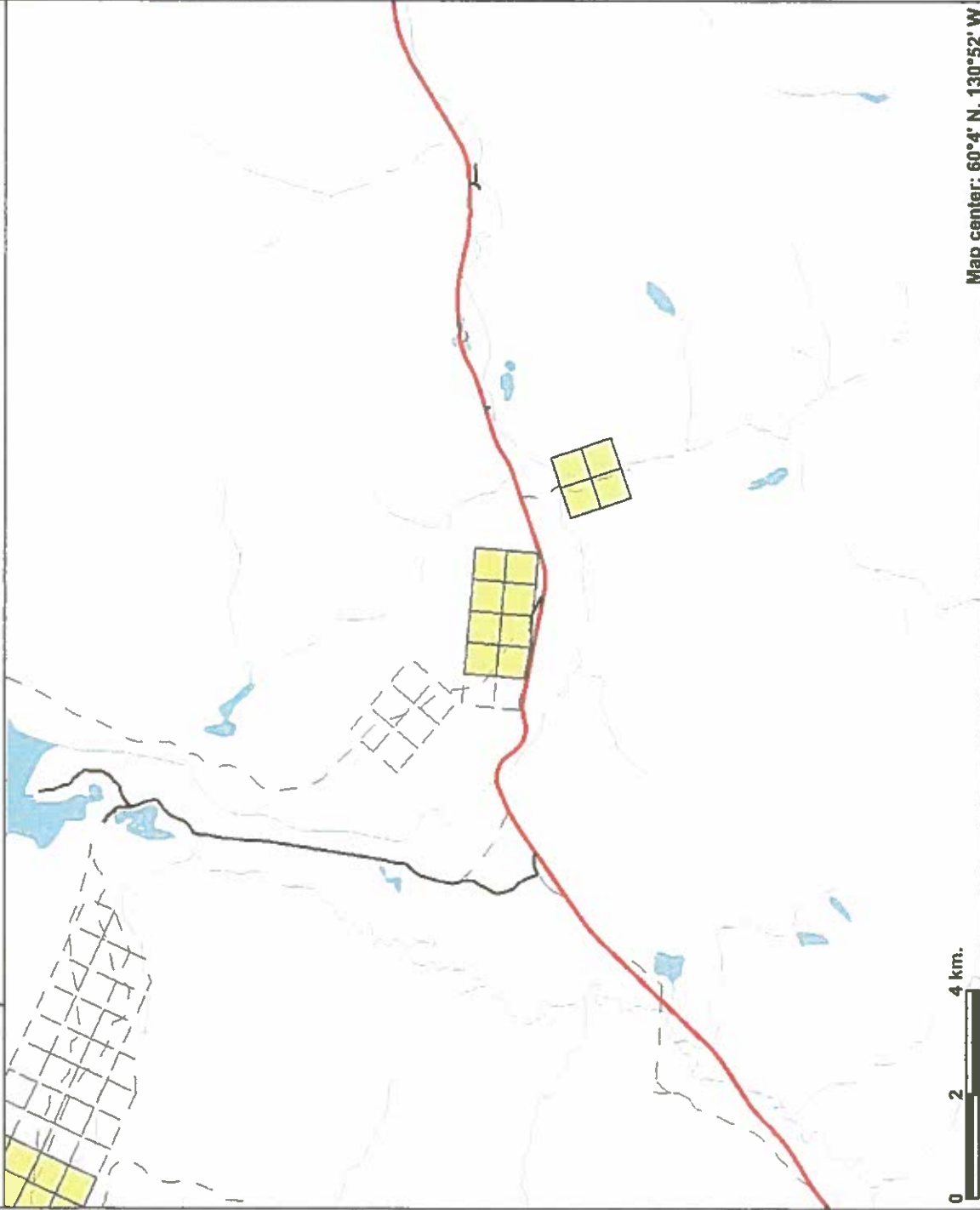
- Legend**
- Yukon Border - Surveyed
 - Quartz Claims
 - Active
 - Expired
 - Land and Sea
 - Ocean
 - Yukon
 - Other
 - Geophysics Residual Total Field Raster



Scale: 1:116,807

This map is a user generated static output from an internet mapping site and is for general reference only. Data layers that appear on this map may or may not be accurate, current, or otherwise reliable. THIS MAP IS NOT TO BE USED FOR NAVIGATION.

Carlick Creek; Rancheria - West



0 2 4 km.

Map center: 60°4' N, 130°52' W

This map is a user generated static output from an internet mapping site and is for general reference only. Data layers that appear on this map may or may not be accurate, current, or otherwise reliable. THIS MAP IS NOT TO BE USED FOR NAVIGATION.



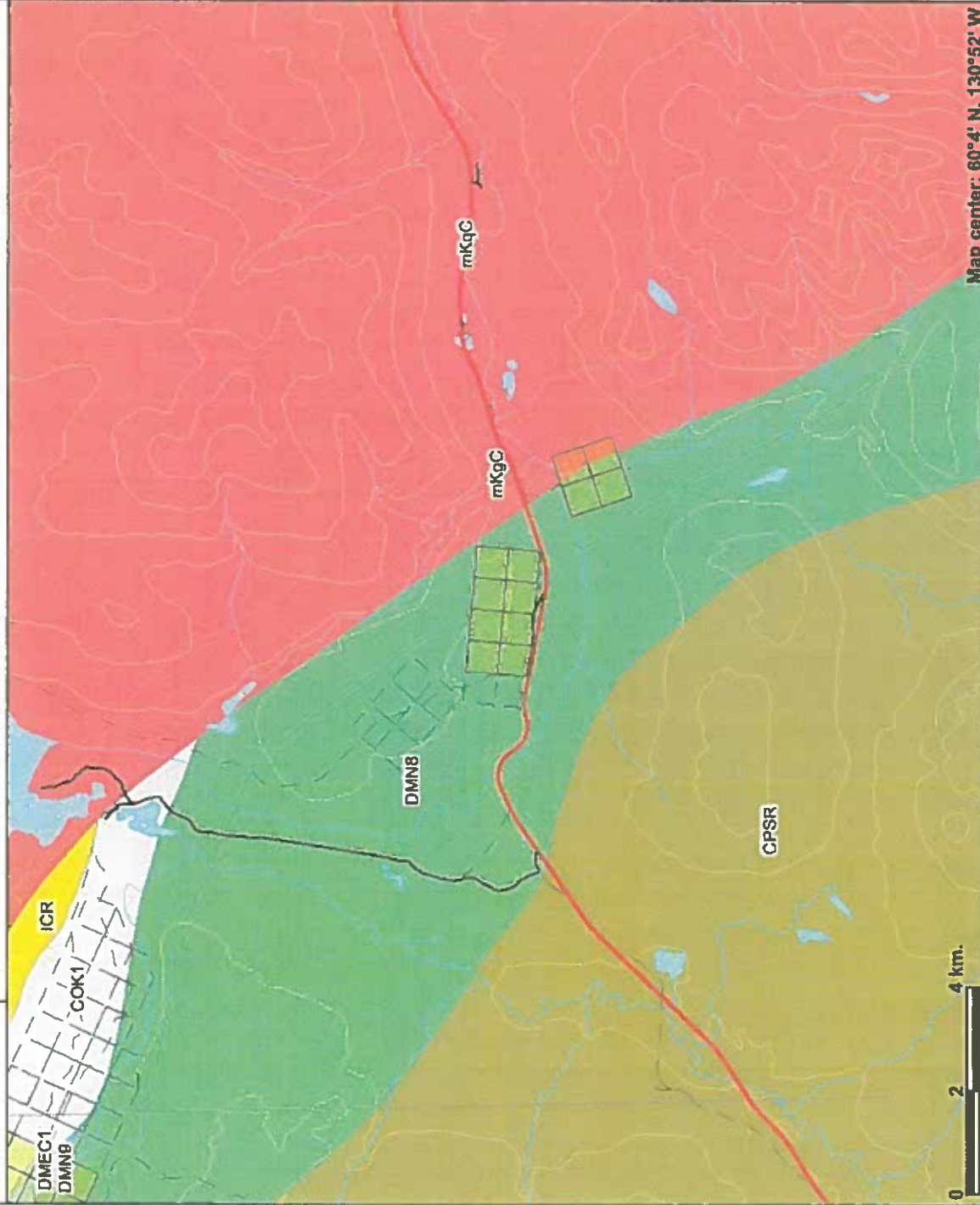
Legend

- Yukon Border - Surveyed
- Quartz Claims
 - Active
 - Expired
- Land and Sea
 - Ocean
 - Yukon
 - Other



Scale: 1:116,807

Carlick Creek - Regional Geology



Map center: 60°4' N, 130°52' W

0 2 4 km.

This map is a user generated static output from an internal mapping site and is for general reference only. Data layers that appear on this map may or may not be accurate, current, or otherwise reliable. THIS MAP IS NOT TO BE USED FOR NAVIGATION.

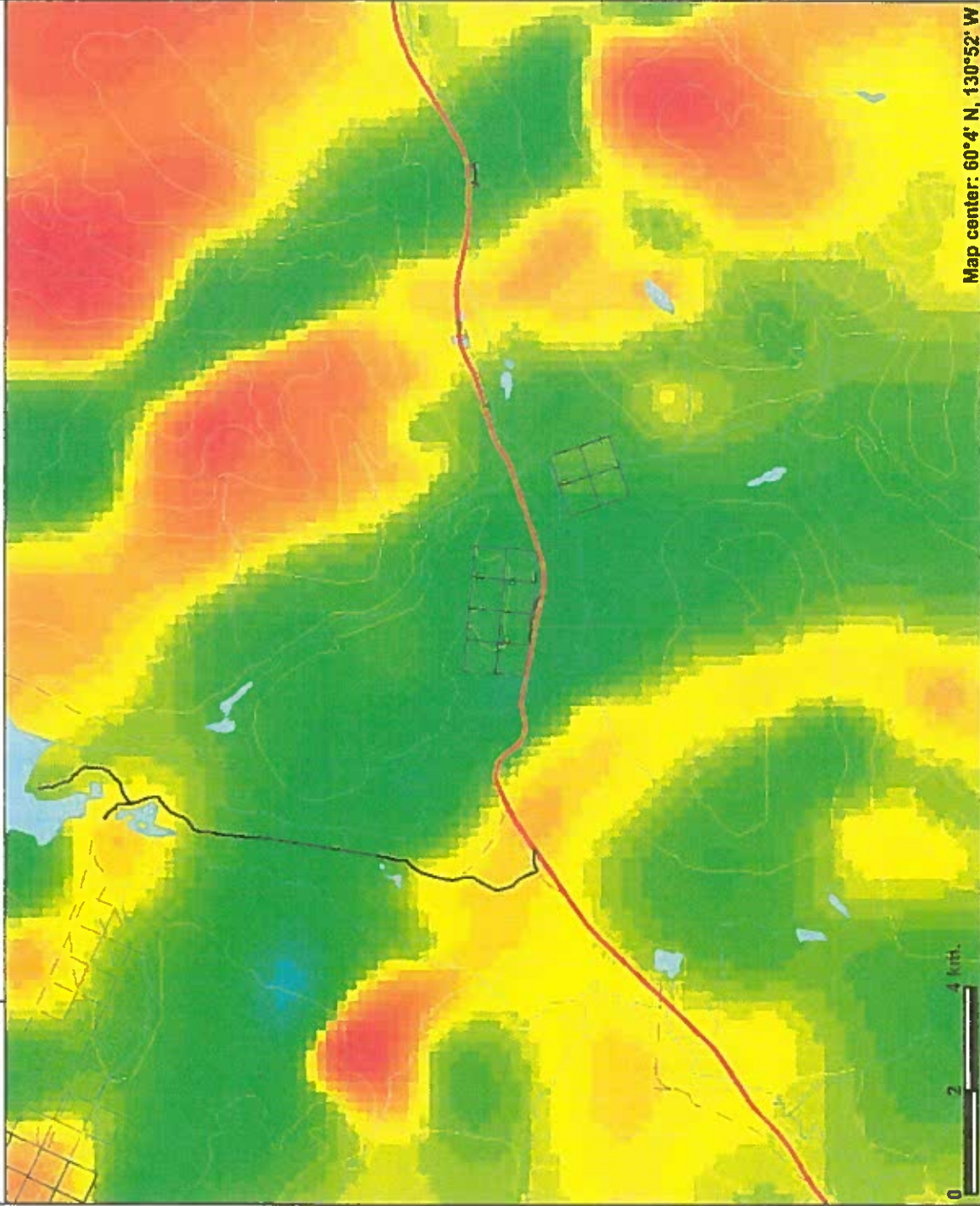


Legend

- Yukon Border - Surveyed
- Quartz Claims
 - Active
 - Expired
- Land and Sea
 - Ocean
 - Yukon
 - Other
- Bedrock Geology - Regional Unit (250K)
 - CDB1
 - CDB2
 - CDB3
 - CDR
 - CDR1
 - CDR2
 - CDR3
 - CDR4
 - CDR5
 - CDR6
 - CDS1
 - CDS2
 - CDS3
 - CDS4
 - CDS5
 - CE
 - CH1
 - CH2
 - CK
 - CK1
 - CK2
 - CK3
 - CK4
 - CKY
 - CL

Scale: 1:116,807

Rancheria - West Geophysical Map



0 2 4 km.

Map center: 60°4' N, 130°52' W

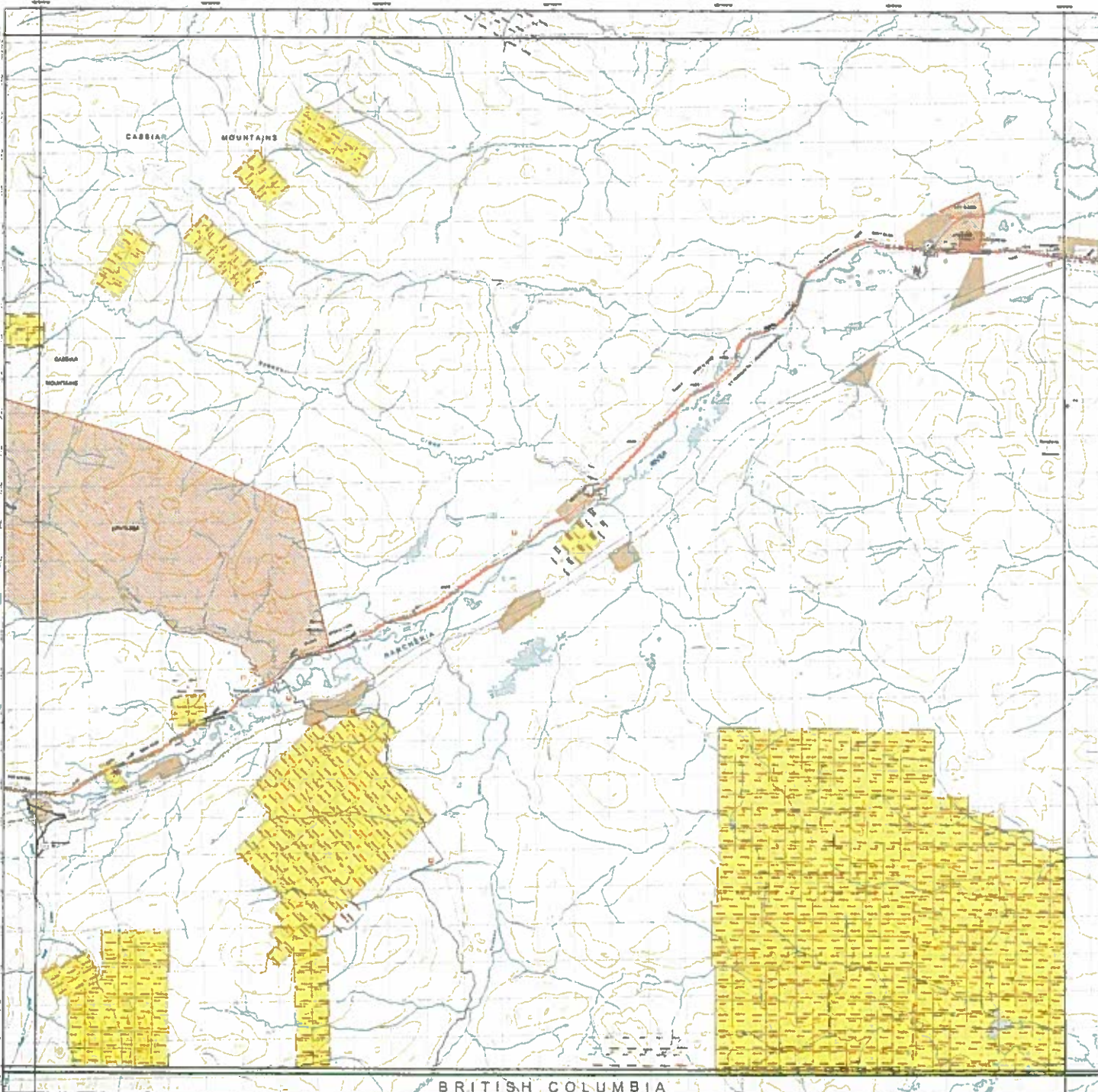
This map is a user generated static output from an internet mapping site and is for general reference only. Data layers that appear on this map may or may not be accurate, current, or otherwise reliable. THIS MAP IS NOT TO BE USED FOR NAVIGATION.



- ### Legend
- Yukon Border - Surveyed
 - Quartz Claims
 - Active
 - Expired
 - Land and Sea
 - Ocean
 - Yukon
 - Other
 - Geophysics Residual Total Field Raster



Scale: 1:116,807



BRITISH COLUMBIA

[Symbol]	Forest cover/active
[Symbol]	Forest cover/retired
[Symbol]	Open
[Symbol]	Water
[Symbol]	Wetlands
[Symbol]	Wetlands - National Wetlands Inventory
[Symbol]	Wetlands - National Wetlands Inventory - Seasonal
[Symbol]	Wetlands - National Wetlands Inventory - Temporary
[Symbol]	Wetlands - National Wetlands Inventory - Permanent
[Symbol]	Wetlands - National Wetlands Inventory - Seasonal - High
[Symbol]	Wetlands - National Wetlands Inventory - Seasonal - Low

[Symbol]	Heritage Conservation
[Symbol]	Heritage Conservation - Provincial
[Symbol]	Heritage Conservation - National
[Symbol]	Heritage Conservation - World
[Symbol]	Heritage Conservation - Other
[Symbol]	Heritage Conservation - Provincial - Archaeological
[Symbol]	Heritage Conservation - Provincial - Cultural
[Symbol]	Heritage Conservation - Provincial - Historical
[Symbol]	Heritage Conservation - Provincial - Scientific
[Symbol]	Heritage Conservation - Provincial - Technical
[Symbol]	Heritage Conservation - Provincial - Traditional
[Symbol]	Heritage Conservation - Provincial - Visual

[Symbol]	Highway
[Symbol]	Major road
[Symbol]	Minor road
[Symbol]	Footpath
[Symbol]	Water
[Symbol]	Wetlands
[Symbol]	Wetlands - National Wetlands Inventory
[Symbol]	Wetlands - National Wetlands Inventory - Seasonal
[Symbol]	Wetlands - National Wetlands Inventory - Temporary
[Symbol]	Wetlands - National Wetlands Inventory - Permanent
[Symbol]	Wetlands - National Wetlands Inventory - Seasonal - High
[Symbol]	Wetlands - National Wetlands Inventory - Seasonal - Low

105B01
MINING CLAIMS



105B01	105B02	105B03
105B04	105B05	105B06
BC	BC	BC

British Columbia
Mining Claims
105B01
Scale 1:250,000
1984

This map was prepared by the British Columbia Ministry of Energy, Mines and Petroleum Development. It is based on data provided by the British Columbia Land Title Office and the British Columbia Geological Survey. The map is intended for general information only and should not be used for legal purposes. For more information, contact the British Columbia Ministry of Energy, Mines and Petroleum Development.

105B01
MINING CLAIMS
Scale 1:250,000
1984

This map was prepared by the British Columbia Ministry of Energy, Mines and Petroleum Development. It is based on data provided by the British Columbia Land Title Office and the British Columbia Geological Survey. The map is intended for general information only and should not be used for legal purposes. For more information, contact the British Columbia Ministry of Energy, Mines and Petroleum Development.

Claim Status Report

13 February 2009

Claim Name and Nbr.	Grant No.	Expiry Date	Registered Owner	% Owned	NTS #'s
H.O.C. 1 - 16	YC25212 - YC25227	2011/09/03	TANANA EXPLORATION INC.	100.00	105B01
JT 1 - 10	YC71815 - YC71824	2012/07/20	TANANA EXPLORATION INC.	100.00	105B01
OPHIR 1 - 10	YC71797 - YC71806	2011/07/20	Ivan Elash Wade Scott Carrell	50.00 50.00	105B01
OPHIR 11 - 16	YC71807 - YC71812	2010/07/20	Ivan Elash Wade Scott Carrell	50.00 50.00	105B01
OPHIR 17 - 18	YC71813 - YC71814	2009/07/20	Ivan Elash Wade Scott Carrell	50.00 50.00	105B01
OPHIR 19 - 24	YC71968 - YC71973	2013/08/24	Ivan Elash Wade Scott Carrell	50.00 50.00	105B01

Criteria(s) used for search:

CLAIM NTS: 105B01 CLAIM STATUS: ACTIVE & PENDING OWNER(S): CARRELL WADE SCOTT, ELASH IVAN, TANANA EXPLORATION INC. REGULATION TYPE: QUARTZ

Left column indicator legend:

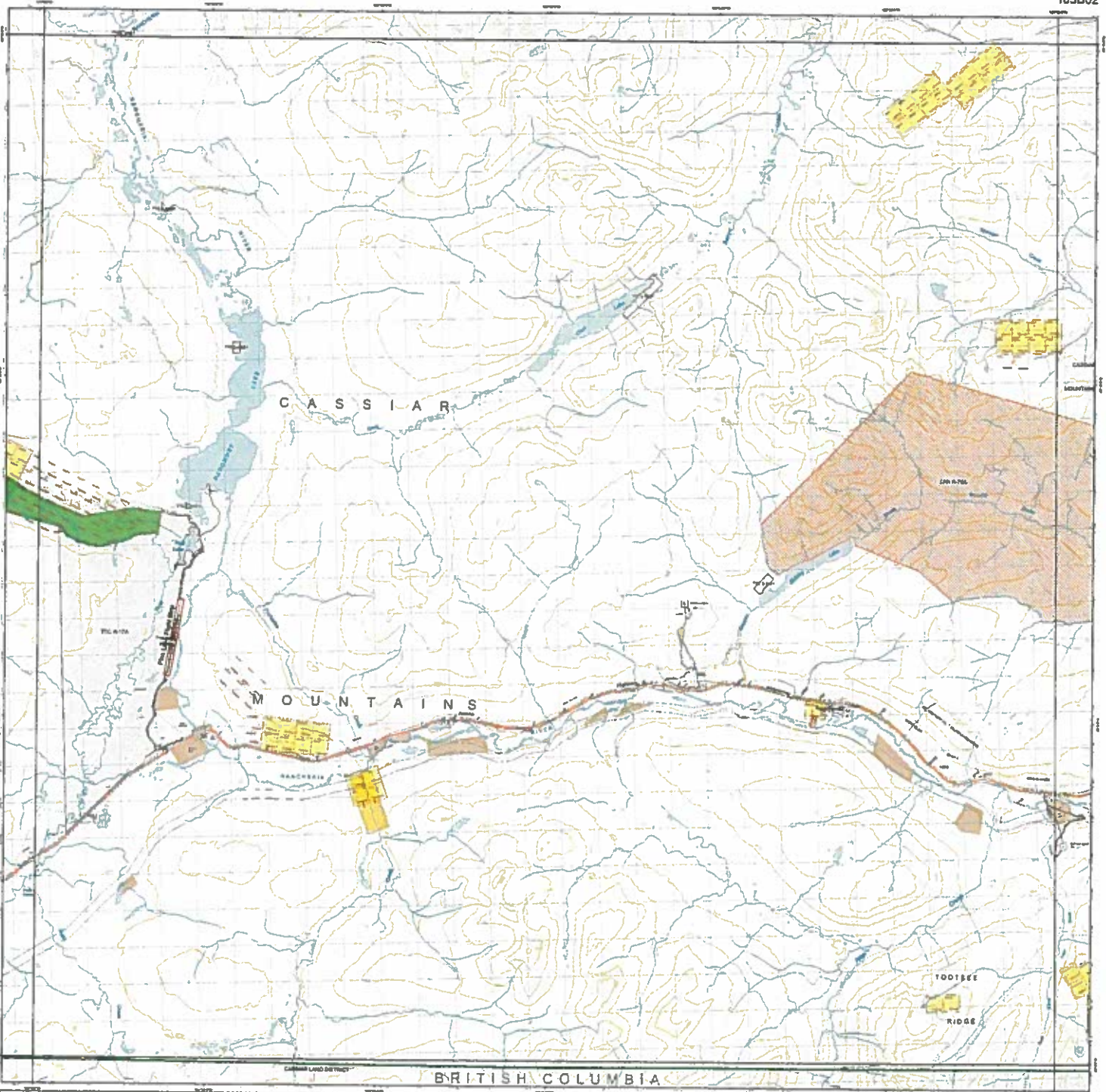
R - Indicates the claim is on one or more pending renewal(s).
P - Indicates the claim is pending.

Right column indicator legend:

L - Indicates the Quartz Lease.
F - Indicates Full Quartz fraction (25+ acres)
P - Indicates Partial Quartz fraction (<25 acres)

Total claims selected : 50

D - Indicates Placer Discovery
C - Indicates Placer Codiscovery
B - Indicates Placer Fraction



105B02
MINING CLAIMS

Mining

- Placer mining claims
- Mineral rights
- Surface rights
- Water rights
- Other

Administrative Boundaries

- Province
- County
- District
- Other

Land Tenure

- Registered land
- Unregistered land
- Other

Other map features

- Water bodies
- Other

Scale

1:50,000

British Columbia

Claim Status Report

13 February 2009

Claim Name and Nbr.	Grant No.	Expiry Date	Registered Owner	% Owned	NTS #'s
BERG 1 - 6	YC71769 - YC71774	2011/07/12	TANANA EXPLORATION INC.	100.00	105B02
BERG 7 - 8	YC29253 - YC29254	2010/08/30	TANANA EXPLORATION INC.	100.00	105B02
BERG 9 - 16	YC71775 - YC71782	2011/07/12	TANANA EXPLORATION INC.	100.00	105B02
JTR 3 - 4	YC73305 - YC73306	2009/06/13	Ivan Elash	100.00	105B02
LENA 1 - 2	YC71765 - YC71766	2013/07/12	TANANA EXPLORATION INC.	100.00	105B02
LENA 3 - 6	YC29157 - YC29160	2012/08/10	TANANA EXPLORATION INC.	100.00	105B02
LENA 7 - 8	YC71767 - YC71768	2013/07/12	TANANA EXPLORATION INC.	100.00	105B02
RIDGE 1 - 2	YC71763 - YC71764	2013/07/05	Ivan Elash Wade Scott Carrell	50.00 50.00	105B02

Criteria(s) used for search:

CLAIM NTS: 105B02 CLAIM STATUS: ACTIVE & PENDING OWNER(S): CARRELL WADE SCOTT, ELASH IVAN, TANANA EXPLORATION INC. REGULATION TYPE: QUARTZ

Left column indicator legend:

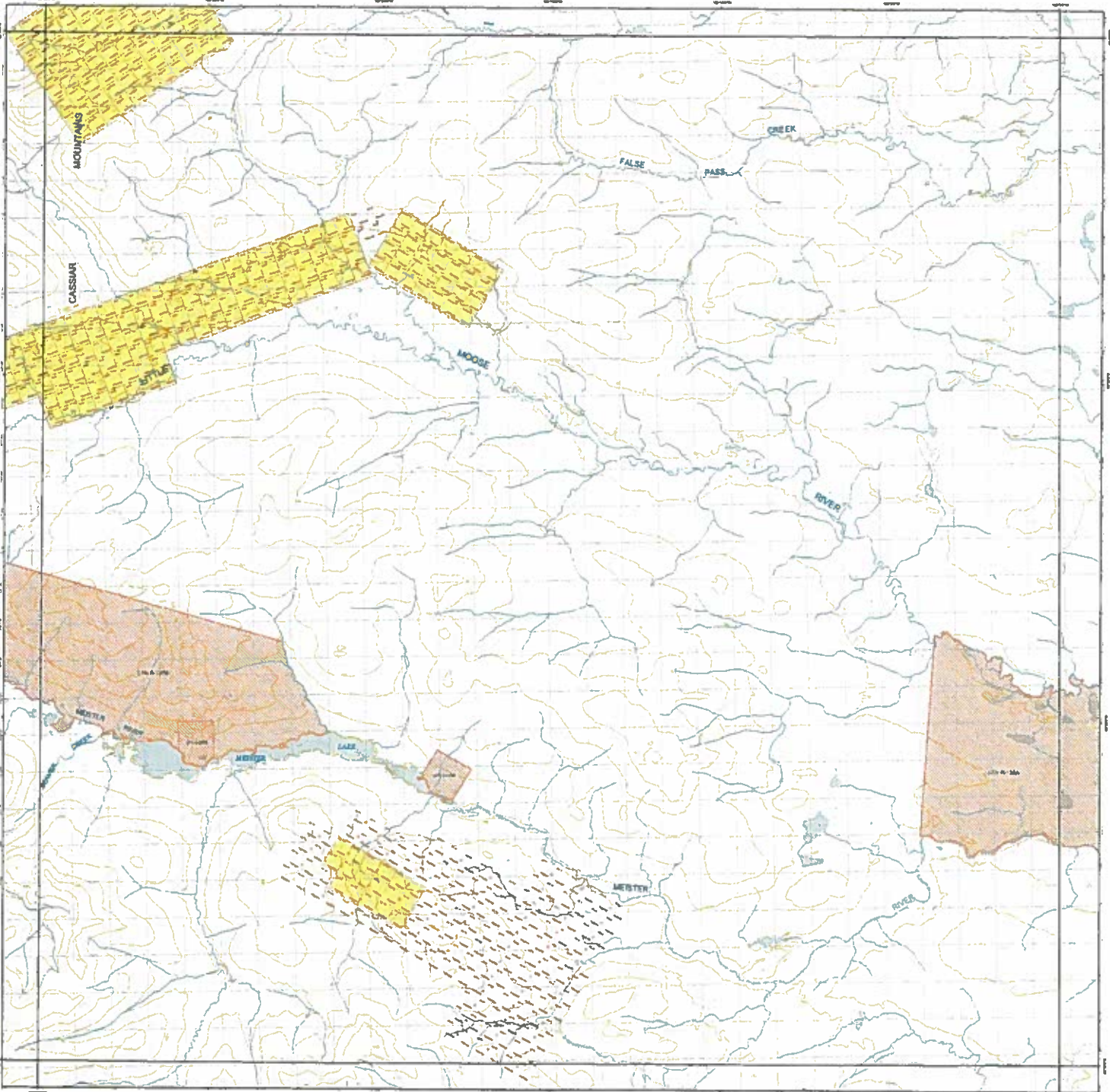
R - Indicates the claim is on one or more pending renewal(s).
P - Indicates the claim is pending.

Right column indicator legend:

L - Indicates the Quartz Lease.
F - Indicates Full Quartz fraction (25+ acres)
P - Indicates Partial Quartz fraction (<25 acres)

Total claims selected : 28

D - Indicates Placer Discovery
C - Indicates Placer Codiscovery
B - Indicates Placer Fraction



Mining

- Placer mining claims
- Surface mining claims
- Subsurface mining claims
- Other mining claims
- Abandoned claims
- Other

Administrative boundaries

- County
- Indian reserve
- Other

Land Tenure

- Land ownership
- Other

Boundaries

- Other

105B08

MINING CLAIMS

Map No. 27, 2008

Natural Resources Canada
Ministry of Natural Resources

Scale

1:50,000

Projection

North American Datum 1983
Universal Transverse Mercator Zone 18
Scale: 1:50,000

Grid

105B10	105B11	105B12
105B07	105B08	105B09
105B05	105B06	105B04

Notes

This map is a compilation of information from various sources. It is not intended to be used as a legal document. For more information, contact the Natural Resources Canada office in your area.

Claim Status Report

13 February 2009

Claim Name and Nbr.	Grant No.	Expiry Date	Registered Owner	% Owned	NTS #'s
MS 115 - 120	YC25245 - YC25250	2009/09/10	TANANA EXPLORATION INC.	100.00	105B08
MS 122	YC25252	2009/09/10	TANANA EXPLORATION INC.	100.00	105B08
MS 124 - 126	YC25254 - YC25256	2009/09/10	TANANA EXPLORATION INC.	100.00	105B08

Criteria(s) used for search:

CLAIM NTS: 105B08 CLAIM STATUS: ACTIVE & PENDING OWNER(S): ELASH IVAN, TANANA EXPLORATION INC.
REGULATION TYPE: QUARTZ

Left column indicator legend:

R - Indicates the claim is on one or more pending renewal(s).
P - Indicates the claim is pending.

Right column indicator legend:

L - Indicates the Quartz Lease.
F - Indicates Full Quartz fraction (25+ acres)
P - Indicates Partial Quartz fraction (<25 acres)

Total claims selected : 10

D - Indicates Placer Discovery
C - Indicates Placer Codiscovery
B - Indicates Placer Fraction

#####

Alex Stewart Geochemical
 ECO TECH LABORATORY LTD.
 10041 Dallas Drive
 KAMLOOPS, B.C.
 V2C 6T4

ICP CERTIFICATE OF ANALYSIS AW 2008- 8622

Phone: 250-573-5700
 Fax : 250-573-4557

Values in ppm unless otherwise reported

Et #.	Tag #	Ag	Al	As	Ba	Bi	Ca	Cd	Co	Cr	Cu	Fe	Ga	Hg	K	La	Mg	Mn	Mo	Na	Ni	P	Pb	S	Sb	Sc	Se	Sr
		ppm	%	ppm	ppm	ppm	%	ppm	ppm	ppm	ppm	%	ppm	ppb	%	ppm	%	ppm	ppm	%	ppm	ppm	ppm	%	ppm	ppm	ppm	ppm
1	0176	0.2	0.74	6.3	144.5	0.22	0.74	0.67	5.7	93.0	15.2	1.86	3.6	20	0.10	14.5	0.58	260	1.88	0.059	25.1	1025	14.77	0.06	0.90	2.0	1.0	26.5
2	0177	0.5	0.69	6.7	147.0	0.16	0.68	0.59	4.8	87.0	14.7	1.47	3.0	15	0.10	9.5	0.54	237	2.05	0.056	24.2	1044	8.64	0.04	1.08	1.7	0.8	25.0
3	0178	0.2	0.62	5.6	100.5	0.12	0.50	0.52	4.4	100.5	13.1	1.32	2.9	25	0.09	9.5	0.47	200	1.70	0.054	23.0	819	7.90	0.06	0.80	1.6	0.7	19.5
4	0179	1.2	0.55	33.5	98.5	0.14	0.57	1.38	5.4	82.5	266.4	3.49	2.2	20	0.12	8.5	0.19	79	8.17	0.035	53.0	3949	16.48	0.10	2.00	1.8	8.3	39.0
5	0180	0.9	0.75	35.0	113.0	0.22	0.84	3.52	21.3	81.0	400.9	4.80	3.0	30	0.12	10.0	0.32	287	8.05	0.039	123.0	5442	12.58	0.10	1.86	2.5	5.3	43.5
6	0181	1.5	0.42	23.3	88.0	0.12	4.38	1.03	3.9	114.5	241.4	1.78	1.9	35	0.12	6.5	0.60	147	5.75	0.032	54.6	7713	22.62	0.14	1.74	1.3	8.8	105.5
7	0182	1.1	0.34	8.2	61.5	0.32	0.46	0.40	3.5	98.0	155.4	1.30	1.4	30	0.10	6.0	0.22	71	2.29	0.030	20.5	1283	88.84	0.12	0.96	1.1	7.1	23.5
8	0183	0.7	0.34	77.9	122.0	0.16	0.16	0.10	2.7	49.5	40.4	4.71	1.9	10	0.14	6.5	0.10	81	6.95	0.039	14.0	1627	13.24	0.50	1.12	0.8	8.4	18.5
9	0184	0.2	0.96	9.8	130.5	0.18	0.72	0.63	7.8	82.5	21.9	2.04	4.0	35	0.11	11.5	0.63	356	2.30	0.050	33.9	821	9.82	0.06	1.12	2.3	1.0	21.5
10	0185	0.6	0.21	30.6	47.5	0.12	3.80	6.73	15.3	121.0	75.2	2.51	1.1	20	0.08	6.0	1.58	274	5.51	0.032	102.8	2013	42.98	0.32	2.00	2.0	9.1	169.5
11	0186	1.2	0.04	28.5	556.0	0.14	>10	40.74	11.5	36.0	23.1	2.29	0.3	45	0.02	2.0	6.28	694	22.19	0.036	185.4	231	17.16	0.12	10.90	1.6	2.9	472.0
12	0187	2.4	0.20	136.3	162.5	0.22	0.35	1.42	4.9	136.5	49.1	3.50	1.0	70	0.07	3.5	0.12	49	23.00	0.032	98.9	3006	39.15	0.20	9.58	0.6	5.9	28.0
13	0188	0.6	0.11	9.0	308.5	<0.02	8.90	0.95	2.6	82.5	20.0	1.60	0.4	10	0.04	2.5	3.60	592	3.25	0.034	28.6	652	11.35	0.08	1.66	0.9	0.8	406.0
14	0189	0.2	0.06	6.6	467.5	0.04	>10	12.64	12.7	33.5	6.3	0.84	0.3	5	0.02	2.5	7.72	804	2.08	0.034	41.9	460	18.26	0.08	0.90	1.0	0.7	584.5
15	0190	17.2	0.04	>10000	225.5	8.78	3.72	231.90	0.7	7.0	32.6	32.57	1.8	60	<0.01	1.5	0.04	>10000	3.04	0.029	1.7	469	660.19	0.06	17.14	0.3	0.2	27.0
16	0191	14.2	0.16	6266.0	43.0	15.82	0.23	99.49	1.3	6.5	386.8	29.96	2.2	75	0.02	4.5	0.04	4244	7.50	0.028	11.5	413	1286.48	0.04	38.26	0.8	0.3	7.0
17	0192	>30	0.06	7619.0	284.5	50.90	0.14	386.10	1.4	9.5	1538.0	35.74	12.5	80	0.02	2.5	0.02	>10000	9.30	0.031	5.6	437	1791.92	0.04	32.26	0.9	4.2	123.0
18	0193	>30	0.12	3718.0	773.5	18.80	0.18	324.10	3.3	13.0	750.8	28.90	8.7	95	0.02	8.0	0.03	>10000	13.34	0.035	14.9	1072	4497.88	0.02	17.00	4.2	2.6	149.5
19	0194	>30	0.11	7580.0	516.5	74.68	0.26	217.00	2.2	23.5	1337.0	33.00	8.1	85	0.02	4.0	0.04	>10000	15.64	0.030	10.3	1267	>10000	0.08	28.66	1.0	3.2	93.5
20	0195	>30	0.08	5653.0	394.0	56.06	0.12	438.40	1.3	9.5	1883.0	34.10	12.3	105	0.02	3.5	0.02	>10000	19.71	0.033	6.5	855	2745.76	0.04	13.52	0.8	2.8	105.5
21	0196	>30	0.19	3560.0	3111.0	42.62	0.13	286.10	3.3	8.0	1502.0	30.72	19.0	215	0.03	6.0	0.06	>10000	17.92	0.035	14.9	1059	2663.60	0.04	46.38	1.3	2.7	206.5
22	0197	>30	0.05	1975.0	820.0	26.34	0.10	304.20	0.7	7.5	526.3	37.24	9.2	90	0.02	2.0	0.02	>10000	5.46	0.030	2.1	365	631.07	0.04	7.72	0.5	1.0	173.5
23	0198	>30	0.06	2348.0	303.5	31.36	0.07	455.20	0.9	10.5	937.3	33.02	10.7	85	0.02	4.5	0.01	>10000	4.67	0.032	3.5	321	2914.24	0.06	16.22	0.5	1.8	160.5
24	0199	25.4	0.08	2823.0	709.5	16.78	0.10	391.90	0.8	12.5	582.5	35.07	9.8	70	0.02	3.0	0.04	>10000	5.93	0.034	4.4	373	646.36	0.06	8.60	0.4	1.1	263.5

Alex Stewart Geochemical
 ECO TECH LABORATORY LTD.

ICP CERTIFICATE OF ANALYSIS AW 2008- 8622

Et.#.	Tag #	Ag ppm	Al %	As ppm	Ba ppm	Bi ppm	Ca %	Cd ppm	Co ppm	Cr ppm	Cu ppm	Fe %	Ga ppm	Hg ppb	K %	La ppm	Mg %	Mn ppm	Mo ppm	Na %	Ni ppm	P ppm	Pb ppm	S %	Sb ppm	Sc ppm	Se ppm	Sr ppm
-------	-------	--------	------	--------	--------	--------	------	--------	--------	--------	--------	------	--------	--------	-----	--------	------	--------	--------	------	--------	-------	--------	-----	--------	--------	--------	--------

QC DATA:

Repeat:

1	0176	0.2	0.74	6.2	140.5	0.20	0.74	0.60	5.6	92.5	14.8	1.82	3.6	20	0.10	14.0	0.58	259	1.86	0.056	24.9	1041	14.60	0.06	0.88	2.0	0.9	26.0
10	0185	0.6	0.21	30.0	46.5	0.12	3.65	6.71	14.7	117.5	72.2	2.41	1.0	15	0.07	6.0	1.54	263	5.44	0.031	97.9	1951	42.94	0.32	1.98	1.9	8.8	163.5

Resplit:

1	0176	0.2	0.72	6.9	143.5	0.24	0.70	0.61	5.1	87.0	14.3	1.71	3.3	15	0.10	13.0	0.57	249	1.70	0.056	22.6	1006	15.03	0.06	0.84	1.8	0.8	25.0
---	------	-----	------	-----	-------	------	------	------	-----	------	------	------	-----	----	------	------	------	-----	------	-------	------	------	-------	------	------	-----	-----	------

Standard:

Pb129a	11.7	0.86	6.8	62.5	0.44	0.46	60.07	4.9	11.5	1437.0	1.60	2.4	85	0.08	4.0	0.71	364	1.99	0.059	5.5	434	6196.32	0.80	16.80	0.6	0.3	28.0
--------	------	------	-----	------	------	------	-------	-----	------	--------	------	-----	----	------	-----	------	-----	------	-------	-----	-----	---------	------	-------	-----	-----	------

Aqua Regia Digest/ICPMS Finish

JJ/kk
 dt/mr/8622
 XLS/09

DETAILED BUDGET FOR TANANA EXPLORATION'S
2008 YMIP FOCUSED REGIONAL EXPLORATION PROPOSAL

RANCHERIA	AREA 1		AREA 2		AREA 3		AREA 4		TOTAL
	Phase 1 Regional	Phase 2 Followup	Phase 1 Regional	Phase 2 Followup	Phase 1 Regional	Phase 2 Followup	Phase 1 Regional	Phase 2 Followup	
DAILY LIVING EXPENSE (\$35/man/day)									
-Wade Carrell	350.00	175.00	350.00	175.00	350.00	175.00	350.00	175.00	2100.00
-Field Assisstant	350.00	175.00	350.00	175.00	350.00	175.00	350.00	175.00	2100.00
-Field Assisstant	350.00	175.00	350.00	175.00	350.00	175.00	350.00	175.00	2100.00
TRAVEL									
-HELICOPTER (@\$975/hr.)									
-TRUCK (@ \$0.42/km)	294.00	294.00	294.00	294.00	294.00				1470.00
-QUAD self owned, 25%	375.00	187.50	375.00	187.50	375.00	187.50	375.00	187.50	2250.00
-QUAD self owned, 25%	375.00	187.50	375.00	187.50	375.00	187.50	375.00	187.50	2250.00
ANALYSIS/SHIPPING COSTS									
ROCKS, ICP multi-element	1910.00	955.00	955.00	955.00	955.00				5730.00
TILL, MMI multi- element	7000.00		3500.00		3500.00				14000.00
CONTRACTORS									
-Wade Carrell	3000.00	1000.00	3000.00	1000.00	3000.00	1000.00	3000.00	1000.00	16000.00
-Ivan Elash	3000.00	1000.00	3000.00	1000.00	3000.00	1000.00	3000.00	1000.00	16000.00
-D. Carrell	1500.00	750.00	1500.00	750.00	1500.00	750.00	1500.00	750.00	9000.00
GEOCHEMICAL SAMPLING	included	included	included	included	included	included	included	included	included
TRENCHING	included	included	included	included	included	included	included	included	included
RECLAMATION	included	included	included	included	included	included	included	included	included
REPORT PREPARATION									800.00
FIELD SUPPLIES	150.00		150.00		150.00		150.00		600.00
TOTALS	18654.00	4899.00	14199.00	4899.00	14199.00	3650.00	9450.00	3650.00	74400.00

PERSONNEL: WADE CARRELL, IVAN ELASH

DATE	PERSONNEL	ACTIVITY DESCRIPTION
JUNE 6/08	WC X IE X	Claim Staking; Carlick Cr.; Register in Watson Lake
JUNE 7/08	X	Prospecting & sampling on Carlick Cr.; Return to Whitehorse
JUNE 28/08	X	Mobilized to Rancharia; Tagged posts on Carlick Creek claims
JUNE 29/08	X	Prospecting & rock sampling on Carlick Creek
JUNE 30/08	X	Prospecting & Stream Sampling; Carlick Creek Area
JULY 1/08	X	Prospecting & Stream Sampling; Spencer Creek Area
AUG 23/08	X	Mobilize to Meister Camp; Start Trench # 1
AUG 24/08	X	Hand trenching; Trench # 1 and #2
AUG 25/08	X	Hand trenching; Trench # 3 and # 4
AUG 26/08	X	Hand Trenching; Trench # 5
AUG 27/08	X	Hand Trench # 6 and Hand Pit #1
AUG 28/08	X	Hand Trenching; Trench # 7
AUG 29/08	X	Hand Trenching; Trench #7; Mobilize to Whitehorse
SEPT 2/08	X	Mobilize to Rancharia
SEPT 3/08	X	Mobilize to Meister Camp; Start Trench # 8
SEPT 4/08	X	Hand Trenching; Trench # 8; Mobilize to Rancharia
SEPT 5/08	X	Mobilize to Whitehorse

STATEMENT OF QUALIFICATIONS

I, Wade Carrell, of 27 Tutshi Road; Whitehorse, in the Territory of the Yukon,
DO HEREBY CERTIFY:

1. THAT I am a Prospector working independently in Whitehorse, Yukon and that I am a Canadian citizen over the age of nineteen with no net income from mineral production.
2. THAT I have successfully completed the Yukon Chamber of Mines Basic Prospecting Course (1993) and the Advanced Prospecting Course (1994 and 1998).
3. THAT I have been engaged in mineral exploration and mining for 15 years in the Yukon and have work extensively on both hard-rock and placer projects for myself and in the past for 15053 Yukon Inc., Dooley Placer Ltd. and for Tanana Exploration Inc, all of Whitehorse and for Klondike Gold Corporation and CMC Metals Ltd. of Vancouver, B.C.
4. THAT this report is based in part on research that I have completed and discussed with Steve Traynor a geologist with the Yukon Geological Survey and with Jim McFaul a contract geologist with Aurora Geosciences Ltd.
5. THAT I have personally supervised and undertaken the exploration work outlined herein.

SIGNED at Whitehorse, Yukon Territory, this 5th day of February, 2009.



Wade S. Carrell – Pres.
Tanana Exploration Inc.