

**TARGET EVALUATION  
REPORT OF 2009 FIELD ACTIVITIES  
FUNDED UNDER YMIP GRANT 09-041**

**PREPARED FOR  
DOS CERROS, CHARLIE BROWN  
PO BOX 1170  
MARSH LAKE YUKON**

**BY:  
CHARLIE BROWN PROSPECTOR  
FEUARY 2010**

## TABLE OF CONTENTS

	PAGE
INTRODUCTION	1
PROJECT SUMMARY AREA #1 Dos Cerros	1
PROJECT SUMMARY Area #2 L/Limit Klondike River 2 <sup>nd</sup> Tier	1
AREA LOCATION AND ACCESS	1 and 2
PREVIOUS WORK AND EXPLORATION	2
REGIONAL AND GENERAL GEOLOGY	2
DESCRIPTION AND SUMMARY OF WORK	3
AUGER DRILL LOGS - FIELD MAPS	15 to 22
PHOTO MARKING WORK LOCATIONS	14
PANNING RESULTS	12
CONCLUSIONS AND RECOMONDATIONS	3 and 4
DOS CERROS AND 2 <sup>ND</sup> TIER KLONDIKE Project location map	13
KLONDIKE RIVER - regional geology	2
SUMMARY OF PROSPECTING Activities and field notes	4 to 11

(1)

## INTRODUCTION

This report prepared for Dos Cerros, Charlie Brown. Funded under Target Evaluation Grant 09-041 of the Yukon Mineral Incentive program, YMIP. A detailed summary of field activities and copies of field notes are included.

### PROJECT UMMARY

Area #1,- DOS CERROS Placer Map 116B-03b. Placer claims TY6 and 7, Caitlin 1-6, Deadman Gulch Gophers 1-7, L/Limit Deaman Gulch Emma's 1-6

Work started in June 2009. Dos Cerro's, hand shovelling was performed on the Emma 2 claim exposing Klondike wash. Sampling was finished up on samples from 2008 prospect on the TY6 and 7 claim, gumbo sericite bedrock was sampled. In End of Sept and Oct. 2009 6" auger drill mounted on nodwell was used to drill to bedrock on the dos Cerros. Samples were put into 20-liter pails and sluice and concentrates panned out in a insulated caboose.

### PROJECT SUMMARY

AREA #2 - 2<sup>ND</sup> KLONDIKE RIVER L/LIMIT Placer Map 116B-03b. Incas 1-4, Knowtown 1-5, Snoopy 1, Vinnieland 2 and 1 mile lease.

Worked started on 2<sup>nd</sup> Tier, June of 2009 doing reconnaissance. Prospecting the L/Limit to mark out for drill holes and areas to shaft. Areas were covered with water making traveling difficult on the trails. End of Sept. Kubota drained water. Shaft site were chosen. 8" auger was used to drill finding thawed ground depth. Hand shafts were dug using steam and a 22lb electric jack hammer. Sampling between over size cobbles in shaft was tested by panning.

## AREA LOCATION AND ACCESS

### DOS CERROS AND 2<sup>ND</sup> TIER L/LIMIT KLONDIKE RIVER

Dos Cerros is approximately 16 km east of Dawson City. You drive all weather road from Dawson City to Bear Creek Subdivision Road. Turning right on the subdivision rd. this road will take you to the mouth of Bear Creek. From here you go up the left limit on the Bear Creek mining road passing old placer mining equipment for about ¾ of a mile. Coming to the Fox claim P00218. Once here you will see a freshly grubbed trail on your right. This trail is accessible by walking or using a 4wheel ATV. Following this trail for 1km, will take you up to the top of Dos Cerrros where it flattens out. You will see new workings. If you follow this trail it will take you around to Deadman Gulch too the Emma claims.

Dos Cerros is readily accessible from Dawson City by 4 wheel drive. When you come to bear Creek crossing at the Fox claim you will have to switch to a ATV 4 wheeler to get up to Dos Cerros.

(2)

## 2<sup>ND</sup> TIER KLONDIKE RIVER L/LIMIT

Klondike River 2<sup>nd</sup> Tier L/limit access is approximately 16km east of Dawson City. You drive all weather road from Dawson City to Bear Creek Subdivison road. Turning right onto the subdivision road will take you to the confluence of Bear Creek and Klondike, looking on your right hand side you will see a small shack that is covered with rusty old flattened out kerosene cans from the old timers. Turning right here onto a 10% down grade trail built out of old tailings from the dredge. Following this trail for a couple hundred ft. you follow a dyke. Turning right following the trail, going through the Bear Creek compound. Follow the vehicle tracks for about 1000ft. You will pass a broken chain link fence than go down a incline and cross Bear Creek. Once across the creek you are on the Inca 4 claim. Follow his trail and it will take you to the 2009 work site.

2<sup>nd</sup> Tier Klondike L/Limit is readily accessible from Dawson City with 4 wheel drive. Once you get on the trail beside kerosene tin shack 4 wheel drive is necessary here. Watch out for any water holes going into the Incas. They won't be deep but very slippery and you could get stuck.

## PREVIOUS WORK AND EXPLORATION

Area #1 No serious work was ever done for placer on the two flat benches on Dos Cerros. On the L/limit and R/limit, I have found some old cat trenches that look more like assesment work from the 80's. These cat trenches are not very deep and don't show any signs of hitting bedrock. Building the old siphon at turn of the last century. Excavating was done using frizzlows (horse drawn scrapers) removing over burden clays and making a bed for the siphon to sit on. I found a couple old time shafts on the TY6 and Caitlin2 claims. These pits or shafts were not dug deep because under the pea gravel layer there is a water table.

Area #2 Work done on 2<sup>nd</sup> Tier Klondike River. Dredges #1, #2, #3 worked in this area. Dredge #1 worked the shallow bedrock at the mouth of Bear Creek 1905, 1906, 1907. Dredge #2 was built in 1910 between Quigley Gulch and Deadman Gulch and dredged the 1 mile lease between Deadman Gulch and Bear Creek, Dredge #2 mined part of the Incas 2, 3, and 4 mining up to a bedrock rim leaving about a 400ft wide virgin area 1500ft long that stretches from INCA4 to INCA1. Dredge #3 made a pass along Knowtown 1-5 and part of Inca 1, in 1951 and 52. Between Quigley Gulch and Deadman Gulch Dredge 3 retired on the vinnie claims.. Talking to Art Fry the Dredge Master on Dredge #3. Back in the early 1990's. He mentioned to me that there is a bedrock rim that runs parallel to the Klondike between Quigley Gulch and Bear Creek that the Dredges could not chew through and step over. Finding old steam hoses, (PHOTO 8) steam points, and a huge boiler on the INCA claims. Tells me this is how the INCA claims got all the over burden stripped off down to gravel at early 1900's. Getting property ready for dredging. Makes this area a interesting prospect.

## REGIONAL AND GENERAL GEOLOGY

### AREA #1 DOS CERROS

The Klondike district lies within the unglaciated portion of the northeren Cordillera. Bedrock in the exposed areas consists mainly of carbonaceous phyllite and quartz with pale green to rusty brown weathering muscovite- carbonate schist. Alluvial on surface, pea gravel mixed with clay rusty seams. Black organic peat is exposed along the trail in places. Vegetation is willows birch, popular aspen and spruce .

### KLONDIKE 2<sup>ND</sup> TIER

A good portion of the Klondike River Valley is covered with tailings from the old dredges from 1905-1952. Bedrock taken from the tailngs piles is chlorite schist, graphite schist., pyrite cubes in graphite schist, quartz with siderite, limonite and some green phyllite and brown muscovite schist's. Vegetation is second growth poplar, birch, willow and aspen.



(3)

## DISCRIPTION AND SUMMARY OF WORK

AREA #1- DOS CERROS Work began in June 2008 hand shovelling on Emmas exposing (PHOTO1) Klondike wash and on the TY claims hand sampling gumbo sericite schist mixed with cobbles that was freeze dried over the winter from 2008 prospect. This material was hand shovelled into 20- litre pails taken down the hill to Bear creek ( because of bear problems)and put through the mini rocker box the concentrates from the mini rocker were panned by hand. Kubota excavator was used opening trails for auger drill. Oct. 2009 Seven auger holes 6'' in diameter were drilled on top of Dos Cerros. Sluicing out material recovered from drill holes in a heated caboose (PHOTO 3) and panning out sluice concentrates.

AREA#2- 2<sup>nd</sup> Tier Klondike. Major work started End of Sept. 2009 Using a 10,000 excavator draining ponds and trenching areas draining wet areas and swamps that covered the main trail. A culvert 1' x 14' long was found on the property and was placed in the Deadman Gulch drain to make a crossing. The Kubota grubbed for shafting. Making these shafting areas large enough to work around. Kubota did many jobs. It stock piled material that was excavated while preparing Gopher shaft site. Klondike schist bedrock and Klondike wash (PHOTO 16). Might of came from one of the old shafts that was near by, a volume test of this material was started (panning) but was to cold to sluice this material. Kubota logged wood for timbers for building the head frame on the shaft. Logged for wood for supplying heat in the head frame and to burn in the steamer for steaming the shaft. Kubota removed snow on the road and in front of head frame. 8'' Auger drill drilled holes on the Inca's to test to see how deep the water table was. Shafting was dug by hand. Using a 22lb electric jack hammer. Chipping frozen muck with a spoon bit . Using a bull bit to chisel and loosen Klondike wash. A steamer was used creating steam from the steamer. Steamer supplied steam to a steam point thawing the Klondike wash gravel in the shaft, using the electric jack hammer to help loosen over size cobbles. Loose and thawed material mixed with water was hand shovelled into a reinforced bucket. Was brought to the surface by rope pulling by hand. Sampling around over size cobbles was done with gold pan.

## CONCLUSION AND AND RECOMONDATIONS

Area #1 Dos Cerros. No white channel palo gravels were exposed with Auger Drilling. Trying to recover proper samples with Auger drilling. Was difficult in drill holes 01-09, 02-09, 03-09, 04-09., because of the thawed pea gravel and wet muck lens and water table about 20ft - 30ft thick on the surface of these holes. Bringing an auger drill sample up to the surface and passing through this thawed wet lens of wet material made sampling impossible. Drill hole 02-09 and 06-09 traces of gold was recovered. Having a water table and so much thaw on this bench. Shafting would not be a good choice to get to bedrock. To do more prospecting on this bench to find frozen areas to do auger drilling. Ground Penetrating Radar or Resistivity should be done.

Finding Klondike wash on the Emma 2 claim, bench on the R/Limit of Quigley Gulch. Ground penetrating radar or Resistivity to find frost and bedrock. Followed by Auger drilling would be a cheap way of doing exploratory prospecting to locate frozen zones, wet zones and bedrock depths where auger drilling could take place.

Area #2 2<sup>nd</sup> Tier Klondike River. Water was a huge problem when prospecting this spring and fall. Using the Kobota excavator helped immensely draining water and wet spots. 8'' Auger drilling was done to find how deep the water table and how deep the thaw is on the Incas 4, 3, 2, claims. (PHOTO6) Drilling 2 holes, one hole reached 11 ft. drilling into thawed Klondike wash and the other hole reached 14ft deep drilling into thawed Klondike wash. Collecting this information I abandoned the idea of digging a shaft in this area. Finding a frozen area with no surface water and in line where dredge #3 hit the bedrock reef. A shaft was started on Inca 1 claim Gopher 1 shaft. 8ft of frozen silt and 10ft of frozen Klondike wash was dug. At 18ft thaw was Reached. PHOTO 14).

(4)

The shaft was left to freeze up over winter. Shafting was not a success because of water.

Having problems with water and finding thawed ground on the Inca 4,3,2, claims. The old timers talk about a old channel coming out of Bear Creek. I have drill reports from Quigley Gulch that's showing bedrock dipping towards the high wall on the L/Limit being the deepest part of the Klondike valley. Ground penetrating radar and Resistivity would help to find thawed, frozen ground and bedrock in this area.

Having Dredge #1 mine 30,000 ounces of gold in the area the size of one creek claim 500ft x 2000ft coming out of Bear Creek, makes this a great prospect. The INCAS border this are at the mouth of Bear Creek. Having water problems. Drilling and shafting does not work in wet ground. When Ground Penetrating or Resistivity is done and frost and bedrock depths are established. Do a volume test. Use a large excavator for stripping and cross cut a trench across the valley into the old channels, using a 6 inch pump to drain the water table. If the area being excavated is thawed to bedrock stockpile the pay gravels for the Kubota excavator to feed the pay gravels through a test box getting dollar per yard test. If frost is encountered and over burden and pay is frozen, use the small Kubota to dig drains and lower and maintain sump allowing the pit to thaw. When the 6 inch pumps the water table. Use a smaller pump 3'' to keep water off the pit floor to keep it thawing untill bedrock is reached in the drains. Once pay is thawed volume sample of pay can be sluiced.

(5)

#### PROSPECTING ACTIVITIES AND FIELD NOTES 09-041

June 20<sup>th</sup> Saturday Gay and I loaded up 4 wheeler ATV quad, ATV dump trailer onto 12,000lb support trailer. Packed prospecting tools and supplies for Dawson City.

June 21 Sunday fueled up, I drove 1 ton Dodge pulling 12000 lb trailer with prospecting supplies. Gay drove V/W Beetle to Dawson City. Stayed at Bonnaza Gold Hotel 1<sup>st</sup> night.

June 22 Monday Went to Dawson City Mining Recorder to get up date on the Snoopy claims 1-11. Mining Recorder and I decided to withdraw these claims because inspections said posts were too far in from the claim boundary. Restake a 1 Mile Prospect Lease could be staked over top of the Snoopy 1-11. Saw Bill Labarge at Mining Recorder Office talked to him about Ground Penetrating Radar for the Klondike. Drove out to Eldorado checked out Henrys Keystone Drill for drilling on the 2<sup>nd</sup> Tier of the Klondike. Needs lots of work and won't be ready any time soon. Cam Arkinstall he was mining next to Henry's Drill. He gave us the OK to stay in his trailer at the Bear Creek lay down. Drove back to Bear Creek lay down. Unloaded ATV and dump trailer. Gay and I drove ATV up to Dos Cerros to the Caitlins dropped off tools. Was told a Mother and two cubs were spotted upstream on the Bear Creek road. Checked for signs for Bears on Dos Cerros, never saw any signs of bears. Drove the ATV down to the Inca claims. Checked out the spring run off. Can't believe the amount of water that is ponding on the trail. A D7 would have difficult time trying to drain these ponds and pull a drill around on the trails.

June 23<sup>rd</sup> Tuesday Went back to the Mining Recorder signed a withdrawal for Snoopy 1-11 claims. Its now open ground. I will stake a 1 Mile Prospect Lease over the old Snoopy 1-11 claims ASP. Went to the Inspections office and got the proper GPS readings to place #1 and #2 post plus where to place all the posts when it comes time to break into claims. Met with Bill Labarge and told him about the water problems on the Incas. We talked that hand shafting might be another option to get to bedrock. Gay and I went to the Klondike and staked 1 mile Placer Prospect Lease 2<sup>nd</sup> Tier between Bear Creek and Quigley Gulch. Finished 11pm light rain.

June 24<sup>th</sup> Wednesday I recorded the 1 Mile Prospect Lease 2<sup>nd</sup> Tier map 116B03b. On the way back to Bear Creek I drove out to Hunker to see John Alton. Told him about the water problem he said that he had his 235 he could let go if that was any help. Drove back to Bear Creek lay down Gay and I drove ATV 4 wheeler to the Incas 1-4. Did a walk around and found a area off the trail 600ft long 200ft wide that has been stripped of all frozen muck and Klondike wash is on surface. This area is surrounded by water. Walking the old Tailings pile the tailings have a lot of broken bedrock sitting on top. This indicates that the dredge hit a bedrock reef. Art Fry and old Dredge Master from Dredge #3 mentioned that Dredge #3 hit a bedrock rim and because of the dredges age and having wooden hull it could not dig bedrock. Gay drove 4wheeler ATV up to TY6 and gathered bedrock contact from 10C Pit from 2008 prospect. She brought down 4, 20-liter pails to Bear Creek to sample. (because of bears) Gay drove 4 wheeler ATV back to the Incas and picked me up.

June 25<sup>th</sup> Thursday I drove 4 wheeler ATV up to Caitlins 1-5. Walking old cat trail bedrock is exposed on surface. Pit 1A and Pit 2B is holding water for drill sampling. Marked out areas for drilling. Gay put 3 buckets of gumbo sericite phyllite mixed with baseball size cobbles through minirocker and panned out concentrates. Got fine black sand and a trace of gold.

June 26<sup>th</sup> Friday Raining am. I went to town and picked up more fuel and groceries. Gay finished putting the remaining bucket through the mini rocker from 10C. Panned out concentrates got fine black sand and trace of Gold. I'm back from town. Gay drove me up to the Caitlins 1 and 2. Gay shovelled in 4, 20-liter pails and loaded them on to the 4 wheeler and brought them down to Bear Creek for sampling. I walked down the North face walking over a couple benches on the rim of the hill Caitlin 2. If auger drilling is successful. With some excavator time a trail could be built to reach this area. Once on the bottom on the Inca 4. I

(6)

waded through knee deep water to get to the trail where Gay picked me up with 4 wheeler ATV. Gay put 2, 20-liter pails of gumbo sericite, phyllite schist with cobbles of quartz through the mini rocker and got fine black sands and fine trace color? Of gold. Gumbo makes sluicing slow.

June 27<sup>th</sup> Saturday Gay and I drove 4 wheeler ATV up to Dos Cerros across Deadman Gulch to Emmas 1-6. I walked Emma 4, 5, 6, claims. Ground is a flat on the bench. Kubota and auger drill will have no problem working in this area. We took the pick and shovel down the North slope of Emma 2 and 3. Took photos GPS point. The gravels on the Emma bench are a lot coarser look like Klondike wash. Caitlin bench was pea gravel on surface. Taking an elevation point with the GPS the bedrock contact was 1498 ft. ASL. The top of the gravel Bench on the Emma 2 was 1728 ASL. 220 ft of colluvium gravel. Walked back to the ATV and drove back to Bear Creek lay down camp.

June 28<sup>th</sup> Sunday Gay finished hand sluicing 10C. Recovered fine black sand no gold. I drove ATV 4 wheeler down to Incas to take photos of water problems on the Inca and Knowtown. My conclusion today. Use small excavator Kubota to drain ponds and prepare shaft sites. Dig a shaft in front of where Dredge #3 was chewing at the bedrock reef. This area can be reached with Kubota. Packed up all prospecting tools and loaded up 4 wheeler ATV and tub trailer and drove back to Whitehorse Army Beach.

June 29<sup>th</sup> Monday I went to see Steve Traynor but he was not in the Office. Relayed my message to Mike Burke and explained how I had water problems on the Incas and Knowtowns. Getting a drill on site would be difficult. I was also having problems getting a drill to drill the 2<sup>nd</sup> Tier of the Klondike. He mentioned he would pass the message along to Steve. I went home and e-mailed Steve explaining these problems.

#### BACK TO DOS CERROS AND 2<sup>ND</sup> TIER L/LIMIT ON KLONDIKE

Sept 27 Sunday Drove Dodge 4x4 1 ton pulling 12,000 lb trailer from Army Beach to Carmacks to pick up 10,000lb Kubota excavator and prospecting tools. From Carmacks drove to Dos Cerros Klondike River Bear Creek.

Sept 28<sup>th</sup> Monday Drove out to Bear Creek landing. Unloaded 4 wheeler ATV Drove to Incas 1-4. Ribboned off trail for Kubota excavator to follow to work site. Checked the flooded areas checking to see where to drain these areas with excavator to get access to build shafts.

Sept. 29<sup>th</sup> Tuesday unloaded Kubota excavator at Bear Creek landing. Walked Kubota to the Incas. Started grubbing for the trail.

Sept. 30<sup>th</sup> Wednesday grubbing with Kubota excavator. These wet area on Incas 4, and 3 are being drained With Kubota. Fuel is being hauled with 4 wheeler ATV.

Oct. 1<sup>st</sup> Thursday grubbed area for potential shaft site Inca 3 using Kubota.

Oct. 2<sup>nd</sup> Friday Grubbed another shaft site and grubbed 40ft x 60ft around shaft site.

Oct. 3<sup>rd</sup> Saturday Grubbed area for potential shaft site. Making area big enough to turn dodge 1 ton 4x4 around.

Oct. 4<sup>th</sup> Sunday grubbing with Kubota in a very wet area Inca 2. Drained a pond. Feeding from Deadman Gulch. will need a culvert to cross over to Inca 1.

Oct 5<sup>th</sup> Monday Found 14ft long 12 inch thick culvert in our bone yard. Using thumb on excavator I picked up the culvert and walked it over to the preped site on Inca 2 and planted the culvert back filling making a trail to cross over to higher ground. Once getting across and having water flowing. I did a walk around on foot checking out potential shaft sites. I found an old working shaft from maybe the 30's. and 40's.

(7)

Oct 6<sup>th</sup> Tuesday Sylvain the Auger driller. Said he will be able to drill on the Dos Cerros in a week or ten days. Drove out to work area. Started to grub trail to Gopher #1 site where its high enough to be out of the water table. Grubbed area near tailings bond where its safe to get water for steaming.

Oct 7<sup>th</sup> Wednesday Kubota unearthed old workings, chlorite schist, graphite schist, and Klondike wash could be from this old shaft. Collected 8, 20-liter pails to test sluice and pan when it warms up.

Oct 8<sup>th</sup> Thursday Stripped and grubbed area large enough for Gopher #1 claim to have turnaround for Dodge 1 ton. Area is wet and spongy. Dug drain around shaft site to let water drain and dry out.

Oct 9<sup>th</sup> Friday Cut trail to Gopher #2 shaft. Cutting drains on both sides of the trail, to drain work site. Gay arrived on site to Dawson today .

Oct 10<sup>th</sup> Saturday Gay brought new 22lb Bosch electric jack hammer out to Shaft site. I picked shaft Gopher #1 site and dug down to frost with Kubota. 3ft. Gay and I used electric jack hammer and 5500 watt generator. Started Chipping out frozen muck with the spoon bit.

Oct 11<sup>th</sup> Gay has no problem operating the 22lb. electric jack hammer, chipping the frozen silt muck. I walked Kubota excavator across culvert upstream on the Klondike to the Inca3 to start grubbing for Snoopy 1 shaft.

Oct 12<sup>th</sup> Monday Gay worked on Gopher 1 shaft. She mentioned its slow going through a layer of frozen trees and roots.. I finished grubbing Snoopy #1 site making area large enough to turn Dodge 4x4 around.

Oct 13<sup>th</sup> Tuesday used Kubota to build trail and clearing site for Snoopy #2 site. Gay hand bombing loose material and chipping on Gopher #1 shaft.

Oct 14<sup>th</sup> Wednesday Walked Kubota back to Gopher #1 shaft. Helped Gay muck out shaft with Kubota. Gay using electric jack hammer on Gopher #1 shaft. I finished digging drain around Snoopy #1 shaft.

Oct 15<sup>th</sup> Thursday I walked Kubota up to Dos Cerros Caitlin claims. Opened up trail for auger drilling. Gay worked on Gopher #1 shaft. Gay drove up to Dos Cerros bringing fuel and picked me up.

Oct 16<sup>th</sup> Friday I helped Gay work on the shaft. Pulling pails by hand. Gay drove me up to Dos Cerros I did some preping for the drill. Gay picked me up with ATV.

Oct. 17<sup>th</sup> Saturday Gay drove me back up to Dos Cerros with ATV 4 wheeler. She went bsck to Gopher #1 shaft and chipped on bottom of hole. Walked Kubota back to the Incas. I helped Gay on shaft having a hard time getting bucket of excavator in the hole to muck out. Pulled buckets by hand.

Oct. 18<sup>th</sup> Sunday Day off.

Oct 19<sup>th</sup> Monday Gay is using electric jack hammer chipping on Gopher #1 shaft. Sylvain showed up with auger drill and caboose. Unloaded his drill and caboose at the Bear Creek laydown. Sylvain walked his drill and caboose up to Dos Cerros. I helped Gay chip on the shaft and pull a couple buckets. I drove up to Dos Cerros and took Sylvain over to where #1 hole was to be drilled. Sylvain said he will start drilling in the morning.

Oct 20<sup>th</sup> Tuesday Sylvain drilled 09-01 got down 58ft no bedrock. 09-02 got down 53ft no bedrock. I discused with Sylvain where we might hit bedrock and follow bedrock out on next drill hole to get away from the colluvium slide. We chose a drill site on the TY claims. Sylvain sampled drill holes 01, 02,. I drove down and helped Gay on the Gopher #1 shaft.

(8)

Oct 21<sup>st</sup> Wednesday Light snow , Drove out to the Inca's, dropped Gay off at shaft. Drove ATV 4 wheeler up to Dos Cerros. Checked to see how Sylvain was making out. He started 09-3. I went back down to Inca's to help Gay. I took 4 wheeler ATV and went and checked on Sylvain at Dos Cerros. He finished drilling 09-03 hit bedrock. He was drilling 09-04 and hit major water table. He got down 18ft and we decided to cancel this hole. He drilled 09-05 hole hit bedrock, dug hole 78ft deep.

Oct 22<sup>nd</sup> Thursday Warmed up melting. Helped Gay chip away on shaft and pull buckets on Gopher #1 shaft. Drove 4 wheeler ATV up to Dos to check on Sylvain. Sylvain ran out of water on 1A and 1B test site from 2008 prospect. I hooked up ATV trailer and hauled samples down to Bear creek for Sylvain to sluice out drill samples. Sylvain finished drilling 09-06 40ft hit bedrock and 09-07 46ft and hit bedrock.

Oct 23 Friday Sylvain finished sluicing and sampling drill holes. He told me he will get me the results next week. Gay and I pulled pails on shaft and did more chipping. Shaft is frozen and dry. Down 8ft. We will have to build a head frame and shelter over the shaft.

Oct.24<sup>th</sup> Saturday used power saw and Kubota. Cut two 11'' x 11'' logs 14ft long. Placed over Gopher #1 shaft. Dug out semi thawed material on surface with Kubota and placed these two logs across shaft hole at 4ft centers. Gay helped. We levelled off the logs and will let freeze in.

Oct 25<sup>th</sup> Sunday I walked Kubota excavator to the Snoopy #1 shaft on the Inca 4 claim. Gay brought generator and electric jack hammer and we chiselled out the frozen material on surface. Chiselling a hole 4ft x 3ft. To make a solid collar. Chipped through the semi frozen top layer and dug into the thawed grave. Hit water table at 3ft. Started another hole using Kubota about 15ft away digging down 5ft. Digging into the water table to make a sump. Planted 2inch electric submersible pump and pump water out of sump. The water table in the Snoopy#1 shaft dropped. Will have to wait for frost to freeze this hole to get any deeper.

Oct 26<sup>th</sup> Monday Walked Kubota to Snoopy #2 shaft Inca 4 claim. Dug test hole for shaft. Hit water table at 3 1/2ft deep. Back filled Snoopy #2 shaft test hole. Walked Kubota back to Snoopy#1 shaft site and backed filled 5 1/2 ft. sump hole beside Snoopy #1 shaft. Gay took gen. set back to Gopher #1 shaft site and chiselled on shaft. I cut logs for Snoopy #1 shaft . 2 logs 1 log - 9'' x 9'' x 14ft long and 1 log 8'' x 8'' x 14ft. Long. For platform on Snoopy #1 shaft

Oct 27<sup>th</sup> Tuesday Walked Kubota excavator back to Gopher #1 shaft. On the way I dug a test hole on Inca 2 claim dug a test hole down 5ft and hit the water table. I back filled hole walked Kubota to Gopher #1 shaft site. Gay and I chiselled on shaft and pulled buckets.

Oct 28<sup>th</sup> Wednesday Gay and I used Kubota excavator and placed pallets over top of 14ft logs for floor. Did some chipping with jack hammer pulled buckets for shaft. Cut 12'' x 12'' log 20ft long. Pulled this log over to Gopher #1 shaft site.

Oct 29<sup>th</sup> Thursday Gay and I finished screwing down platform floor. Starting to hit Klondike wash in shaft. Switched bits using a bull bit on the electric jack hammer to dig the Klondike wash. I cut 20ft log and squared it to 12''x 12'' and 9'' x9'' and placed it over the other two logs on the shaft to make a 4ft x 4ft square hole (collar) for the head frame to sit on.

Oct 30<sup>th</sup> Friday Pulled frozen chips from jack hammer out of shaft. Chipped more frozen Klondike wash. Set headframe with Kubota and spiked it down to the log collar.

Oct 31<sup>st</sup> Saturday Started to place shelter over head frame at Gopher #1 shaft site. Cut spruce sapplings 4'' 5'' thick in half to make later for shaft. Chipping shaft with bull tips on electric jack hammer. Shaft is frozen dry and is at 10ft.

Nov. 1<sup>st</sup> Sunday Drove to Whitehorse to pick up more supplies. Gay stayed behind in Dawson City.

(9)

Nov. 2<sup>nd</sup> Monday Whitehorse  
3<sup>rd</sup> Tuesday Whitehorse  
4<sup>th</sup> Wednesday Whitehorse

Nov 5<sup>th</sup> Thursday Melting in Whitehorse, Loaded up supplies for Dawson. Went into Whitehorse Mining Recorders. Talked to Bill Labarge about this years projects. Off to Dawson City. Arrived late in Dawson. Warm.

Nov. 6<sup>th</sup> Friday 0 temp. Started Kubota excavator. Gay cleaned snow off the platform. I walked excavator to Incas 2 and 3 claims. Dug a test hole Snoopy #4 shaft site hit water table 3ft. Dug test pit Snoopy #5 shaft site broke through frost hit water table at 4 ½ ft. Back filled Snoopy 4 and 5 sites. Walked Kubota back to Gopher #1 shaft. Gay Chipped on Gopher #1 shaft with electric jack hammer. Marty's 8 inch auger drill mounted on a Nodwell is sitting at the mouth of Bear Creek.

Nov. 7<sup>th</sup> Saturday temp - 5 I talked to Marty Knutson on the phone. He sais he could try and drill a couple auger holes on the Incas to see how deep the water table is and how deep it is to frost. I helped Marty walk his drill to the Inca 4 claim. The first hole he drilled he got down 11ft and broke a button off the bit, he pulled out hit water and wet fine gravel, no bedrock. He changed bits and dug another hole about 40ft from 01 hole. Drill 02 got down 14ft. Bit broke in half, hit water, pulled out 4" size Klondike wash cobbles. Was hard to tell if bottom of hole was frozen or thawed. Gay worked on shaft chipping the sides to make shaft wider.

Nov. 8<sup>th</sup> Sunday temp -8 Gay and I pulled buckets mucking out shaft. Worked on plat form on the Gopher #1 shaft. Placed roof supports on head frame.

Nov. 9<sup>th</sup> temp -10 Monday I chipped bottom of shaft with 22lb electric jack hammer. Some big cobbles of Klondike wash showing up 2'x2'. Gay and I mucked out shaft.

Nov.10th Tuesday temp -15 Picked up pallets at Kluane Frightlines on the way to the shaft for steamer and to burn in stove for headframe. Gay and I chipped away on shaft trying to loosen over size cobbles. Still in frost.

Nov. 11<sup>th</sup> Wednesday temp -11 Mucked out shaft. Loosened over size cobble 2' x2' with electric jack hammer. Wrapped rope around cobble and pulled out of shaft. Set 45 gallon drum stove inside head frame.

Nov.12th Thursday temp. 0 degrees 6" snow fell over night. Pulled snow from shaft. Finished putting tarps over head frame platform. Strapped down tarps on roof and walls. Hooked up lights. Head frame over shaft is covered in with heat and we can work out of the elements.

Nov. 13<sup>th</sup> Friday temp -28 clear. Started fire in head frame. Used electric hammer chipped on bottom of shaft. Mucked out shaft. Having wood stove and shelter covering shaft makes working at -28 not a problem. Slow going.

Nov.14<sup>th</sup> Saturday temp -10 with 10" of snow fell and still snowing. Lite fire in head frame. Chipping bottom of shaft and mucking out shaft.

Nov.15<sup>th</sup> Sunday temp -15 Gay took day off. I cleared snow with Kubota excavtor. Cleared snow off the hill crossing Bear Creek at Inca 4 claim. Logged some birch logs for stove in head frame.

Nov.16<sup>th</sup> Monday temp -20 I chipped in bottom of shaft trying to loosen more over size cobbles 2'x2'. Mucked out chips from between the cobbles. Gay panned some material at 14ft and got fine trace of gold.

(10)

Nov. 17<sup>th</sup> Tuesday temp -20 Picked up more pallets at Kluane Frieghtlines. Put 2x4 treads on the 4'' and 5'' sapplings cut in half to make a ladder. Placed in shaft and screwed to the log collar. Rebuilt bucket for mucking out shaft. Screwed 3/4 inch plywood to the bottom of pail. Reinforced the handles on the shovel with 3/8 cable. Chipped between over size cobbles can't get the cobbles loose. Mucked out the chips from jack hammering in the shaft.

Nov. 18<sup>th</sup> Wednesday temp -20 Chipped bottom of shaft making shaft larger to undercut the cobble. This worked. Cobble is loose. Wrapped cobble with chain and sling and pulled out of shaft. Going to set up to steam.

Nov. 19<sup>th</sup> Thursday temp -15 Plugged in Kubota and did snow removal. Cut logs for the tri pod. Stood 3 logs upright making tripod for 100lb propane bottle to hang off of for steaming. Gathered up hose fittings for building steamer. Chipped another over size cobble out of shaft.

Nov. 20<sup>th</sup> Friday temp -20 Chiselled around more cobbles. Mucked out shaft. Hooked up come along to tripod and hung 100lb propane bottle from tri pod. Marty Knutson came out to shaft site to check on us. He mentioned he had a steamer that he built and if we wanted we were welcome to use it. He said to come and take a look. We drove over to his property and liked what we saw and decided to pick the steamer up the next day in the day light.

Nov. 21<sup>st</sup> Saturday temp -17 Gay and drove back out to Marty's shop at Hunker Creek and loaded up his steamer. Took it out to Inca 3 shaft site and put fittings and a new pressure gauge on the steamer. Need one more fitting for steamer hose. Can't pick up till Monday.

Nov. 22<sup>nd</sup> Sunday temp -28 Day off repairing extension cords. Panned out 1 20- litre bucket old timers bedrock graphite schist and chlorite schist mixed with Klondike wash from old shaft site Inca2 claim. Never recovered any gold put did pan out some pyrites.

Nov. 23<sup>rd</sup> Monday -28 Picked up more pallets from Kluane Frieghtlines. Cut more birch with power saw. Cut up pallets. Gay started fire in head frame. I started fire in steamer. Filled steamer with water we hauled from camp. Steamer is working. Using one steam point. Steam point is creating lots of steam in head frame. Hard to see. Put steam point in bottom of shaft in the center. Let steamer run out of steam. Will let sit over night.

Nov. 24<sup>th</sup> Tuesday temp -28 Started fire in head frame. Gay and I mucked out water and loose Klondike wash material. Used electric jack kammer to loosen steamed cobbles. Steaming is working good at this point in time. Started fire in steamer filled steamer with water. Steamed with one steam point. Let steamer run out of steam. Let sit over night to get more thaw. Will muck out in the am.

Nov. 25<sup>th</sup> Wednesday temp -20 Started fire in head frame. Mucked out water and thawed Klondike wash from shaft. Used electric jack hammer to loosen cobbles. Started fire in steamer. Steamed with one steam point. Let sit over night for more thaw.

Nov. 26<sup>th</sup> Thursday temp -10 Started fire in head frame. Mucked out water and thawed Klondike wash out of shaft. Lit fire in steamer, filled steamer with water. Steamed with one steam point. Ran steamer out of steam .Let sit over night for more thaw.

Nov. 27<sup>th</sup> Friday temp -7 Lit fire in head frame. Mucked out water and thawed Klondike wash out of shaft. Lit fire in steamer. Filled steamer with water. Steamed with one steam point. Ran steamer out of steam. Let sit over night for more thaw.



(11)

Nov. 28<sup>th</sup> Saturday temp -8 Lit fire in head frame. Mucked out water and thawed Klondike wash. Pulled out more buckets of water than what was but in the steamer. Mucked out thawed Klondike wash. Digging down and pulling more buckets of water. Water is moving in the bottom of the shaft. Hit thawed water table. Will let freeze for a couple days. Off to Whitehorse left Dawson in the late pm.

Nov. 29<sup>th</sup> Sunday temp mild -2 at Army Beach Marsh Lake.

Nov. 30<sup>th</sup> Monday Gay and I drove back to Dawson with more supplies.

Dec. 1<sup>st</sup> Tuesday temp -15 Drove out to shaft site. Sides of shaft are showing signs of sluffing from the heat of the thawed water. Bottom of shaft is frozen with 1ft of loose sitting on the bottom from the sides of shaft sluffing. Started fire in head frame. Gay and I mucked out loose material on the bottom of shaft. Water froze on the bottom of shaft. Used electric chipping hammer to chip the ice. Mucked out ice and loose material to get down to original depth before we left for Whitehorse. Shaft is 18ft. Deep. Chipped out more semi froze ice and Klondike wash. Mucked out this material. Gay sampled a couple pans never got any color.

Dec 2<sup>nd</sup> Wednesday temp -15 Picked up more pallets at Kluane Frieight lines. Lit fire in head frame. Shaft froze up over night. Bottom of shaft is to soft and thawed to steam. Chipped ice and Klondike wash with electric jack hammer. Mucked out loose material. Signs of thaw showing up. Will let freeze over night.

Dec. 3<sup>rd</sup> Thursday temp-15 Lit stove in head frame. Chipping very bottom of shaft with electric jack hammer. Hitting over size cobbles. Cobbles are loosening up with jack hammer. Can't steam. Steam will thaw making mushroom effect on the bottom of shaft. Mucked out the semi thawed material. Thinking of using hot water to thaw.

Dec 4<sup>th</sup> Friday temp -20 Plugged in excavator. Started fire in head frame. Heating up water on stove inside head frame to thaw bottom of shaft. Used excavator to log more birch for stove. Did some snow removal. Gay watched fire heating water on stove. Poured hot water down to the bottom of the shaft. Let sit. Chipped bottom of shaft with electric jack hammer. Mucked out water and loose cobbles. Hitting sluch. Will let freeze over night.

Dec 5<sup>th</sup> Saturday temp. -20 Started fire in head frame. Chipped frozen sides of bottom of shaft. Sides of shaft are freezing in. Dug out center of shaft on the bottom. Mucked out shaft hit thawed material. Will let freeze up over night. Gay and walked down to Knowtown 5 claim. We checked out old shaft from the early days 1990's. Checked to see what it would take to finish digging this shaft. Needs grubbing and excavator work to grub around shaft to make work area flat around shaft. Took GPS of shaft.

Dec 6<sup>th</sup> Sunday temp-25 Lit fire in head frame. Worked in shaft. Shaft is slowly freezing up. Used electric jack hammer lossened cobbles. Mucked out cobbles and Klondike wash from bottom of shaft. Small pepples have been thawing from the sides of shaft. Falling into work area. Will have to let freeze over winter and see what March 2010 brings. Down 19 1/2ft - 20ft.

Dec. 7<sup>th</sup> Monday temp -12 Plugged in excavator. Packing up. Covered in top of shaft. Screwed down wooden cover making it safe so no one can fall into shaft. Gay packing up prospecting and shafting tools. Loaded up Marty's steamer onto Dodge 1 ton 4x4 truck. Started Kubota excavator and moved it to higher ground away from th high water at spring run off. Took Marty's steamer back to his shop on Hunker.

Dec. 8<sup>th</sup> Tuesday. Temp -10 Finished loading up tools and prospecting supplies onto dodge 1 ton and onto 12,000 lb trailer. Put some tools in back of ford 4x4. Gay and I drove back to Whitehores Army beach. I left Kubota excavator at the Inca's.

(12)

**PANNING RESULTS DOS CERROS**

**RESULTS**

TY 6 claim SAMPLE 10B from 2008 prospect, 4 - 20-liter pails  
put through mini rocker box. Concentrates were panned out  
Material was sericite phyllite schist mixed with quartz cobbles on bedrock

recovered fine black sand  
fine trace of gold

TY6 claim Sample 10C from 2008 prospect. 4 - 20 liter pails  
put through mini rocker box. Concentrates were panned out  
Material was sericite phyllite schist mixed with quartz cobbles on bedrock  
1<sup>st</sup> 2 pails sluiced out

recovered fine black sand  
Fine trace of gold  
recovered fine black sand  
No gold

Pails 3 and 4

**PANNING RESULTS FROM 6" AUGER DRILL DOS CERROS**

Drill hole 09-02  
Drill hole 09-02  
Drill hole 09-03  
Drill hole 09-04  
Drill hole 09-05  
Drill hole 09-06  
Drill hole 09-07

no gold  
recovered trace of gold  
no gold  
no gold  
no gold  
recovered trace of gold  
no gold

**PANNING RESULTS FROM GOPHER #1 SHAFT**

Panned shaft material between over size cobbles at 14ft

recovered fine trace of gold

Panned shaft material at 18ft

recovered no gold

**PANNING RESULTS FROM OLD WORKING SHAFT**

Material Kubota stock pile panned out 1 20-liter pail

recovered no gold  
Small pyrites

CB 09-01 8" auger drill hole

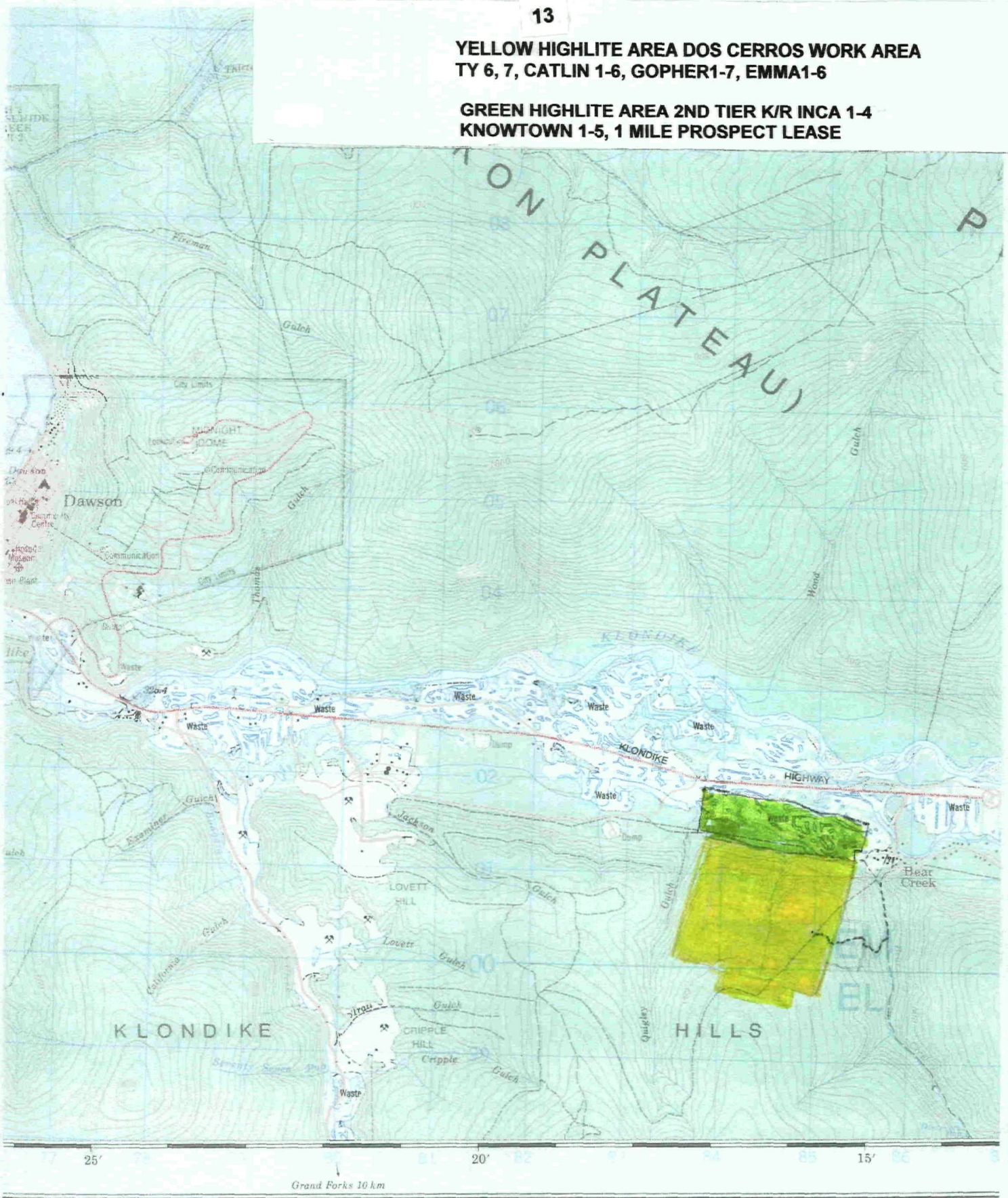
no sample

CB 09-01 8" auger drill hole

no sample

**YELLOW HIGHLIGHT AREA DOS CERROS WORK AREA  
TY 6, 7, CATLIN 1-6, GOPHER1-7, EMMA1-6**

**GREEN HIGHLIGHT AREA 2ND TIER K/R INCA 1-4  
KNOWTOWN 1-5, 1 MILE PROSPECT LEASE**



25' 20' 15'

Grand Forks 10 km

Routes  
 revêtement dur .....  
 revêtement dur

dual highway  
 double chaussées  
 2 lanes

more than 2 lanes  
 plus de 2 voies  
 less than 2 lanes

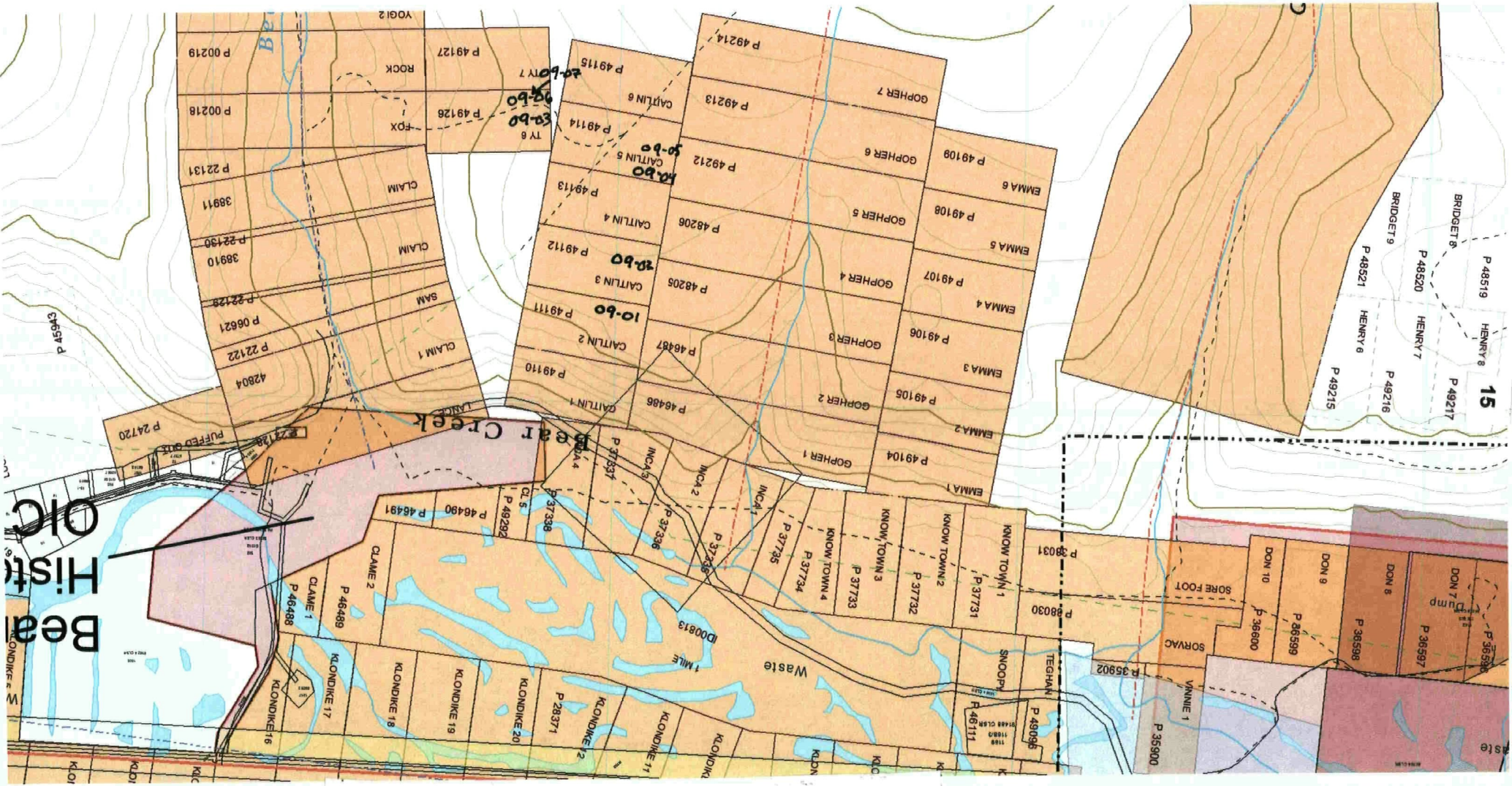
**DAWSON**  
YUKON TERRITORY TERRITOIRE





**BLUE CROSS 8" AUGER DRILL SITE 2ND TIER**  
**YELLOW CROSS TRAIL TO DOS CERROS**  
**BLUE DOTS DRILL SITES DOS CERROS**  
**YELLOW DOT SAMPLING AREA WITH CABOOSE DOS CERROS**  
**RED DOT GOPHER #1 SHAFT 2ND TIER INCA #2 K/R**  
**BLACK DOT SNOOPY #1 SHAFT 2ND TIER INCA #1 K/R**  
**RED CROSS DOT 1990'S SHAFT 38' DEEP KNOWTOWN #5 2ND TIER K/R**  
**GREEN DOT JUNE PROSPECTING HAND SHOVELING KLONDIKE WASH**

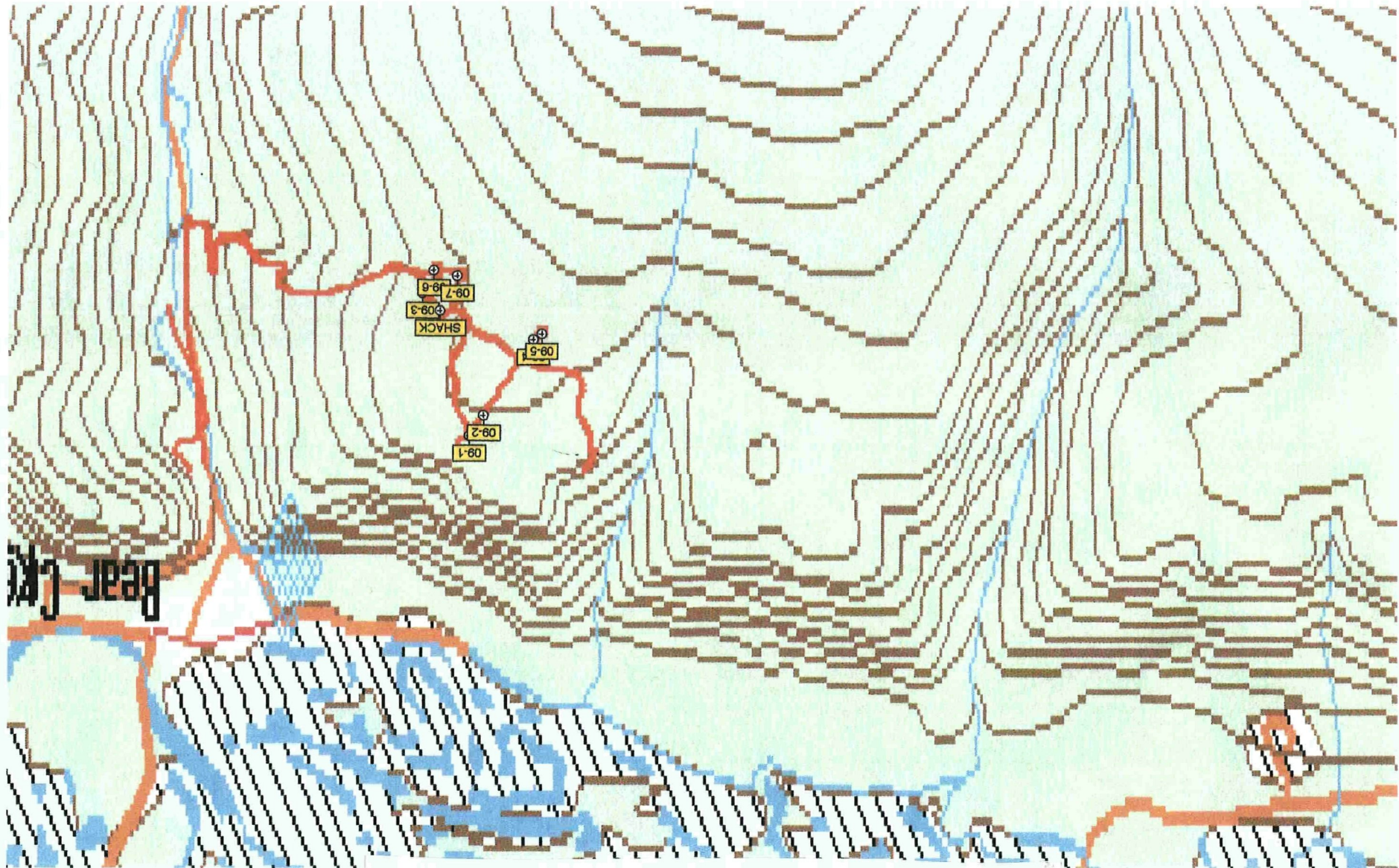




6" AUGER DRILL LOCATION MAP 116B03b DOS CERROS AP


030-B9111






6" AUGER DRILL GPS LOCATION MAP 116B03b DOS CERROS

**PLACER DRILL LOG**


<b>Date:</b> 22-Oct-09		<b>Time:</b>	<b>Driller:</b> Sylvain Fleurant	<b>Helper:</b>
<b>Type of Drill:</b> auger			<b>Inside Diameter of Drill:</b> 6 inch	
<b>Location:</b> Bear Creek Map;116-B-03B			<b>Lease or Grant Numbers:</b> Claim p 49126 - p 49127	
Drill Hole Number	Total Footage	Breakdown IN Feet (of materials encountered)	Remarks: samples/results	
09-6	40ft	4ft thawed gravel 4ft thawed muck gravel mix 1ft hard bolder 4ft soft muck sand mix 5ft soft thawed gravel damp 15ft frozen		
		hard gravel ( bedrock at 33ft ) 5ft soft bedrock brown mix gravel 2ft hard bedrock dark green black (gold trace )		
09-7	46ft	3ft thawed gravel 2ft sand 2ft hard gravel 7ft thawed muck 4ft frozen muck 1ft gravel 3ft muck 1ft gravel medium hard 2ft		
		sand 3ft soft gravel 2ft gravel medium hard 2ft sand 4ft soft gravel 3ft hard gravel ( bedrock at 40ft ) 8ft very hard bedrock brown		
<b>total</b>	<b>86ft</b>		<b>Date:</b> 22-Oct-09	<b>Signed (Driller or Representative)</b> 

**PLACER DRILL LOG**

Date: 21-Oct-09		Time:	Driller: Sylvain Fleurant	Helper:
Type of Drill: auger		Inside Diameter of Drill: 6 inch		
Location: Bear Creek Map;116-B-03B		Lease or Grant Numbers: Claim p 49112 to p49114		
Drill Hole Number	Total Footage	Breakdown IN Feet (of materials encountered)	Remarks: samples/results	
09-3	43ft	21ft soft thawed gravel 2ft thawed muck 1ft soft gravel 3ft muck 1ft gravel medium hard ( maybe bedrock at 28ft) 5ft gravel or bedrock 2ft hard bedrock ( pull out at 35ft no bedrock lot cave in , gravel with brown tint maybe bedrock went back in )	8ft bedrock hard (hole went cooked, because of cave in bedrock did not come on surface went pull out bad recovery )	
09-4	18ft	8ft thawed muck water 1ft frozen muck 1ft frozen gravel medium hard 8ft hard gravel ( to much water hole cancel )		
	2ft up	in elevation		
09-5	78ft	5ft thawed muck 11ft frozen muck (16ft) 2ft hard gravel 3ft medium hard gravel 8ft hard gravel 3ft soft gravel 1ft hard gravel 1ft soft gravel (34ft) 9ft muck 12ft muck 3ft muck gravel mix 5ft muck 1ft soft gravel (bedrock at 64ft ) 14ft bedrock medium hard dark green		
total	139ft	Date: 21-Oct-09	Signed (Driller or Representative) 	

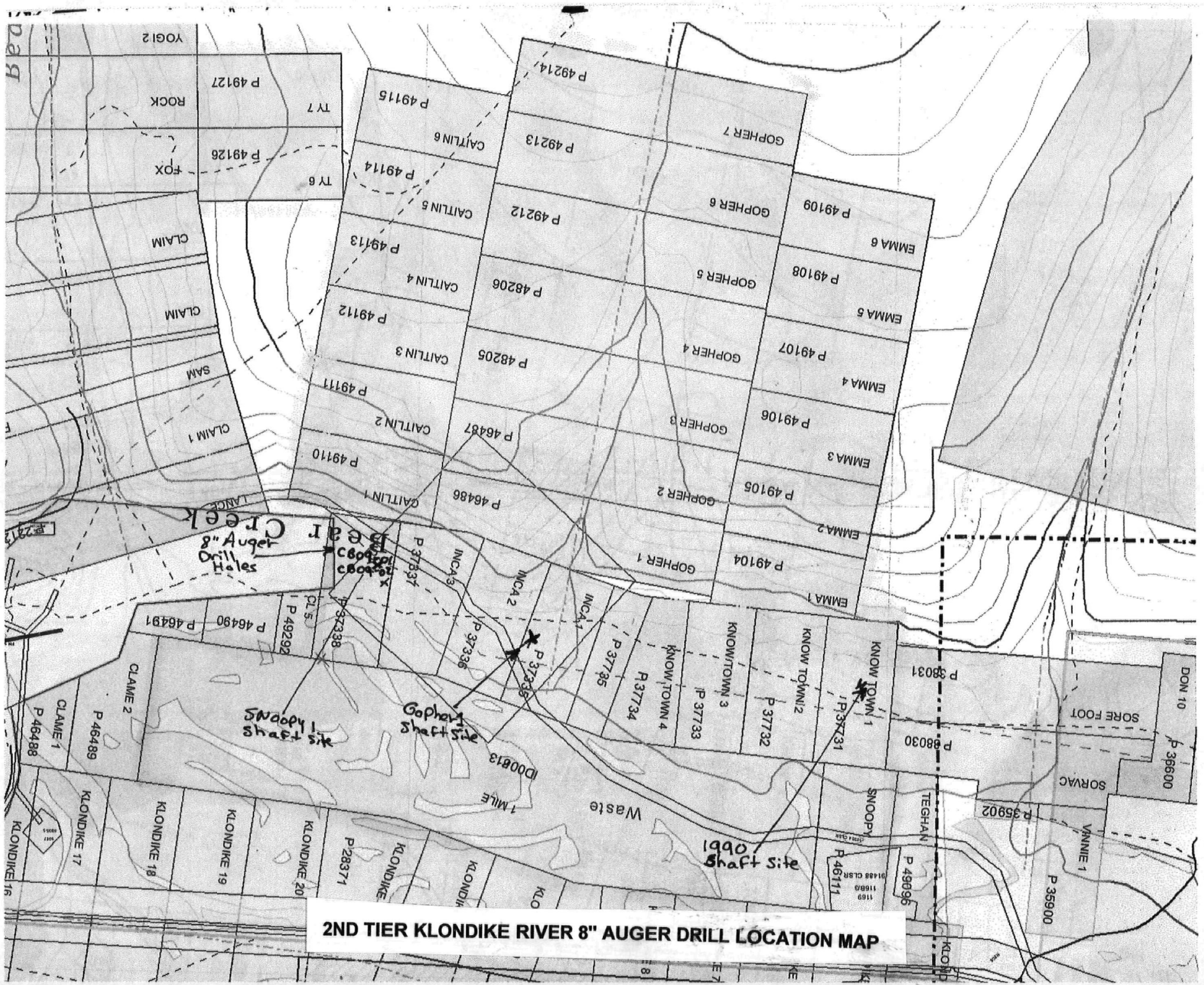


**PLACER DRILL LOG**

Date: 20-Oct-09	Time:	Driller: Sylvain Fleurant	Helper:
Type of Drill: auger		Inside Diameter of Drill: 6 inch	
Location: Bear Creek Map;116-b-03b		Lease or Grant Numbers: Claim p 49111	
Drill Hole Number	Total Footage	Breakdown IN Feet (of materials encountered)	Remarks: samples/results
09-1	58ft	8ft thawed pea gravel damp 15ft thawed muck 9ft muck barley frozen 3ft muck gravel mix 8ft muck frozen barley 11 muck	
		little gravel mix 4ft soft thawed gravel water bad recovery gravel mix with the muck on the way up very hard to sluice	
		not reach bedrock	
09-2	53ft	13ft thawed pea gravel 22ft thawed muck 7ft soft gravel 8ft thawed gravel medium hard water 2ft medium hard gravel frozen	
		1ft hard frozen gravel water bad recovery (gravel mix with muck on the way up very hard to drill it put pressure on auger and lose drilling power sample don't want to come up ) (gold trace )	
total	111ft	Date: 20-Oct-09	Signed (Driller or Representative) 

19

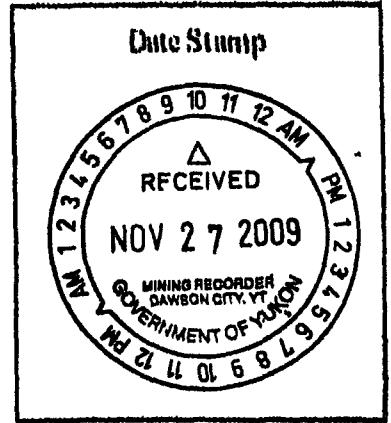
<sup>2</sup> HOLE	TOTAL DEPT	MUCK	OVERBURD	GRAVEL	FROZEN or THAWED	BEDROCK	DEPT TO BEDROCK	WEIGHT	
BEAR CREEK AREA CLAIM P49111 AREA									
09-1	58 FT			58	THAWED WATER	?	?		
09-2	53 FT			53 BOTTOM	WATER FROZEN	?	?	TRACE	⊙
09-3	43 FT		27	1	FROZEN	15 ?	28 or 33 FT		
09-4-	18 FT	9		9	FROZEN WATER	CANCEL TO MUCH WATER			
	2 FT UP IN ELEVATION ↓								
09-5-	78 FT	16.		48	FROZEN	14 DARK GREEN	64 FT		
09-6	40 FT		18	15	FROZEN	7 BROWN DARK GREEN	33 FT	TRACE	⊙
09-7	46 FT		36	3	FROZEN	6 BROWN	40 FT		



2ND TIER KLONDIKE RIVER 8" AUGER DRILL LOCATION MAP

# Placer Drill Log

Date: Nov 7/09 Driller: Hartin Knutson  
 Type of drill: Auger Inside Diameter of Drill: 8"  
 Location: L.L. Klondike Valley D/S Mouth of Bear Creek  
 Lease or Grant Number: P37337



2nd Tier L.L. limit Klondike River

Drill Hole Number	Total Footage	Breakdown in feet	Materials encountered	Remarks: Samples / Results
CB09-01	11	0-5	Fine Sandy Gravel	Black / Wet @ 3'
		5-10	Fine Sandy Gravel with Cobbles	Black - Wet Hole
		10-11	Boulders	Refusal
CB09-02	14	0-5	Fine Sandy Gravel	Black / Wet
		5-10	Sandy Gravel with Cobbles	Black Wet Hole
		10-14	Gravel with boulders	Hard Drilling. Refusal Second Attempt, Bit Failed. Frozen
	25			

Nov 8/09

Signed (Driller or Representative):

**PROSPECTING  
PHOTOS  
TARGET EVALUATION  
GRANT 09-0411  
CHARLIE BROWN  
DOS CERROS  
KLONDIKE RIVER**





PHOTO 1

JUNE PROSPECT HAND DUG EXPOSING KLONDIKE WASH ON EMMA 2 DOS CERROS





PHOTO 2

6" AUGER DRILL DRILLING ON DOS CERROS





PHOTO 3

SLUICING AUGER DRILL SAMPLES IN CABOOSE ON CAITLIN 5 DOS CERROS





PHOTO 4

4 WHEELER ATV HAULING DRILLED SAMPLES IN 20-LITER BUCKETS DOS CERROS





**PHOTO 5**

**STARTING SNOOPY #1 SHAFT. HIT WATER TABLE ON INCA #4 2ND TIER KLONDIKE**





PHOTO 6

8" AUGER DRILL DRILLING WATER TABLE TO FROST INCAS #4 2ND TIER KLONDIKE





PHOTO 7

STARTING TO TRENCH AROUND GOPHER #1 SHAFT DRAINING SWAMP INCA #2  
2ND TIER KLONDIKE





PHOTO 8

OLD STEAM HOSES KUBOTA DUG UP BESIDE SNOOPY #1 SHAFT 2ND TIER KLONDIKE





PHOTO 9

OLD SHAFT ON INCA #2 2ND TIER KLONDIKE



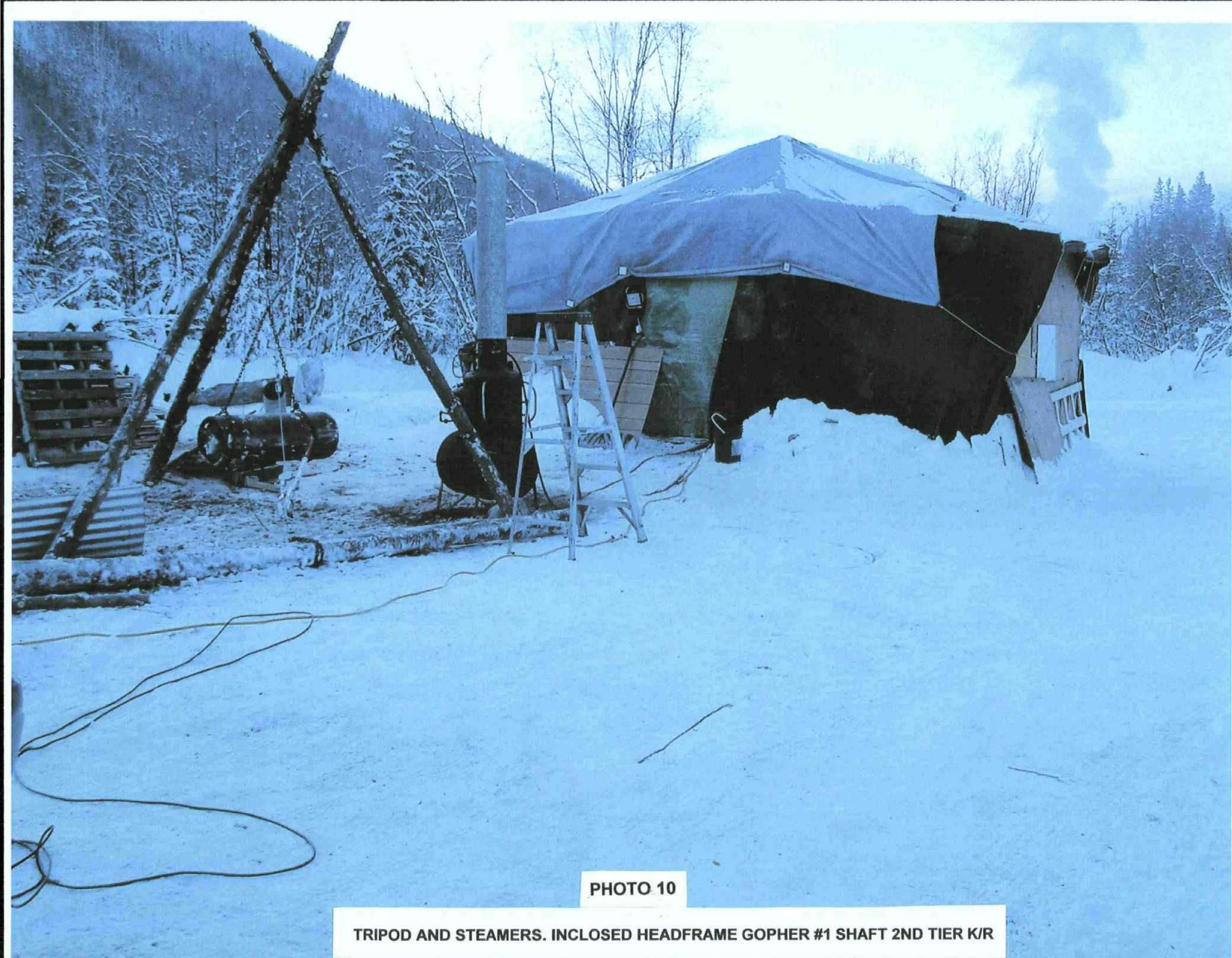


PHOTO 10

TRIPOD AND STEAMERS. INCLOSED HEADFRAME GOPHER #1 SHAFT 2ND TIER K/R





PHOTO 11

OVERSIZE COBBLES GOPHER #1 SHAFT 2ND TIER K/R





PHOTO 12

MORE COBBLES WITH 22LB ELECTRIC JACK HAMMER GOPHER #1 SHAFT 2ND TIER K/R



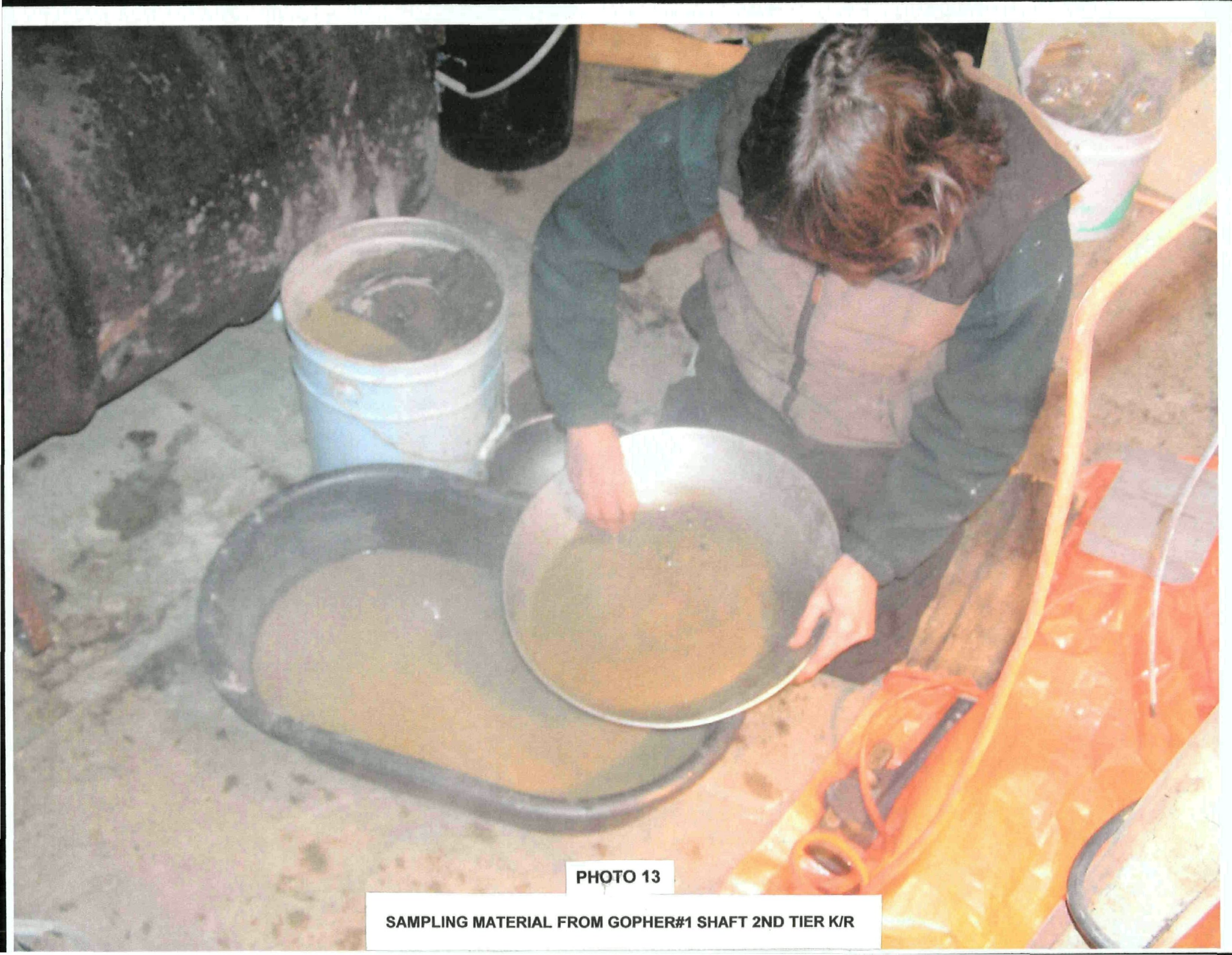


PHOTO 13

SAMPLING MATERIAL FROM GOPHER#1 SHAFT 2ND TIER K/R



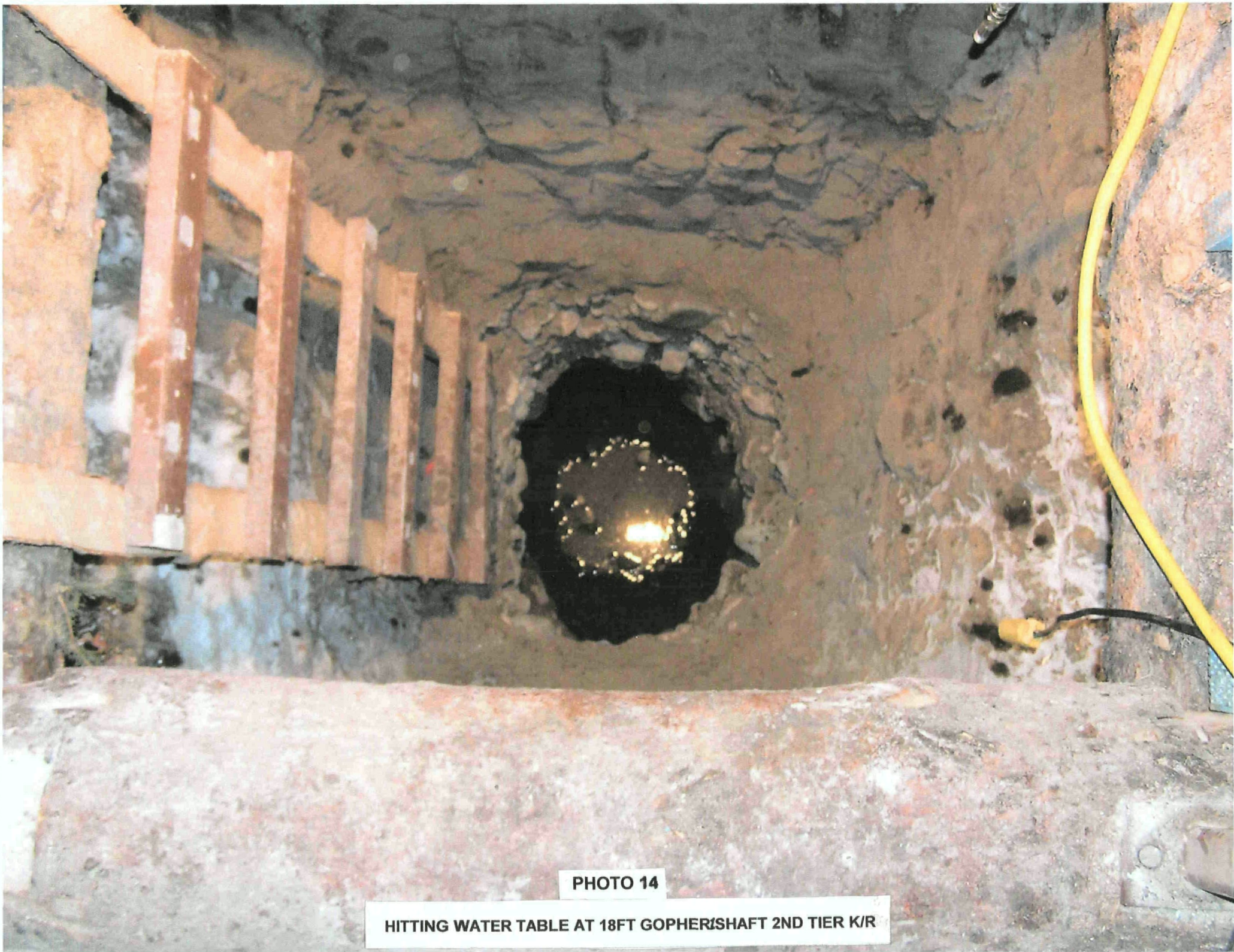


PHOTO 14

HITTING WATER TABLE AT 18FT GOPHER/SHAFT 2ND TIER K/R





PHOTO 15

KUBOTA UNCOVERED OLD WORKINGS CHLORITE GRAPHITE SCHIST AND KLONDIKE WASH 2ND TIER K/R BESIDE OLD SHAFT