

**TARGET EVALUATION
REPORT OF 2009 FIELD ACTIVITIES
FUNDED UNDER YMIP GRANT 09-042**

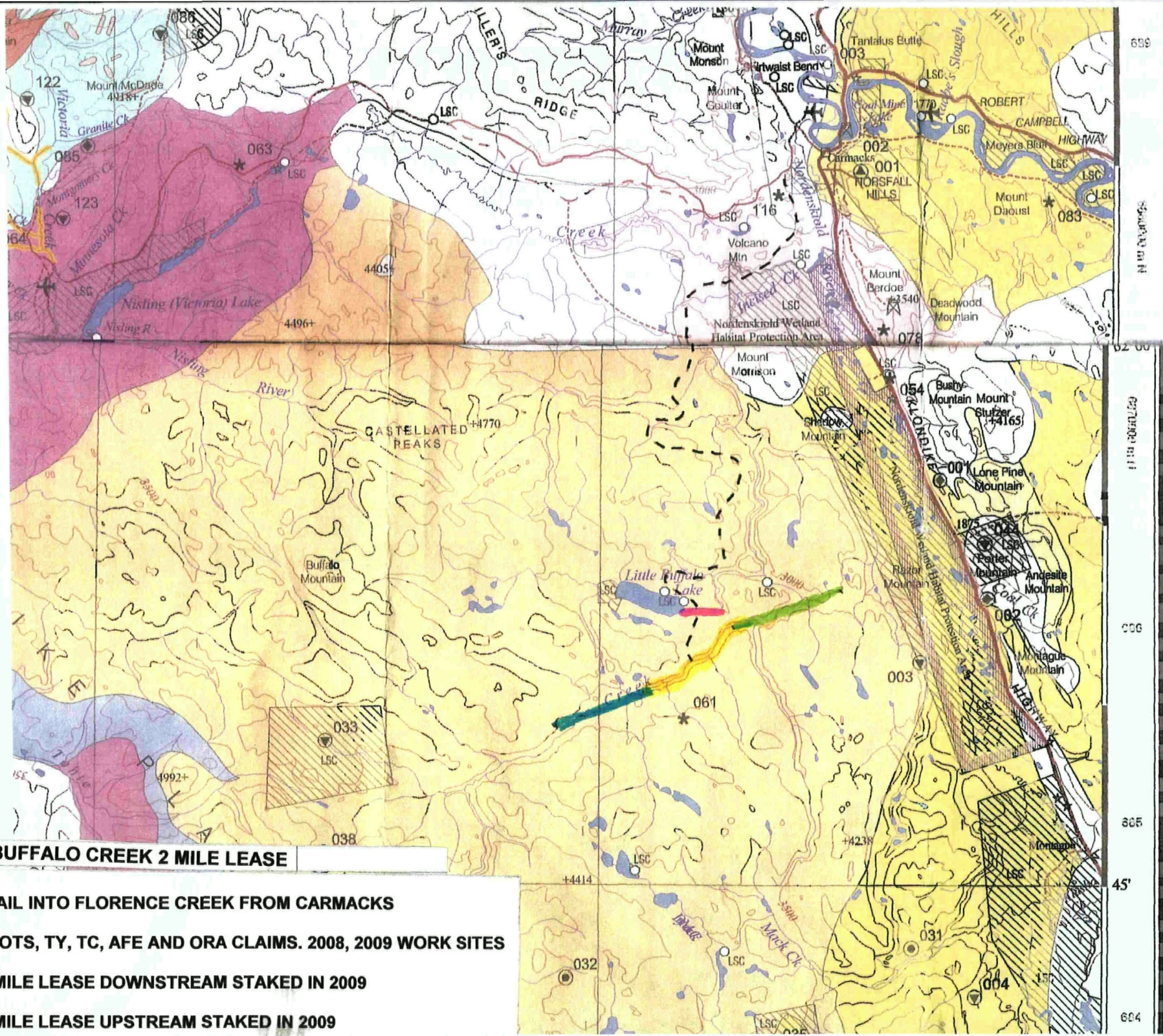
**PREPARED FOR
DIAMOND TOOTH RESOURCES
PO. BOX 1170
MARSH LAKE YUKON
YOB 1Y1**

**BY
CHARLIE BROWN PROSPECTOR
FEBUARY 2010**

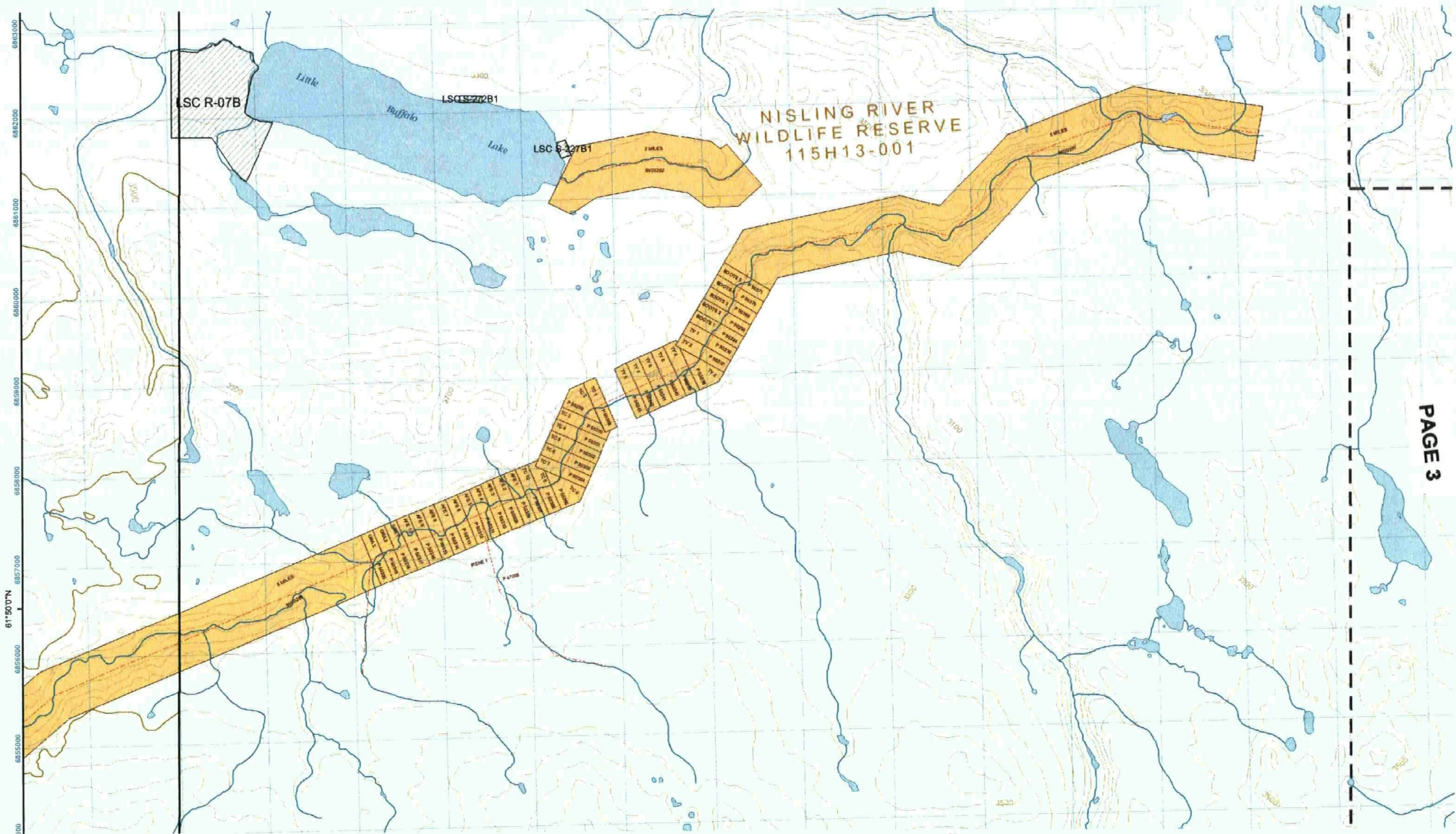
(1)

TABLE OF CONTENTS

	PAGE
INTRODUCTION	4
AREA 1 FLORENCE CREEK PROJECT SUMMARY	1
AREA 2 FLORENCE CREEK PROJECT SUMMARY	1
AREA 3 BUFFALO CREEK PROJECT SUMMARY	1
AREA LOCATION AND ACCESS	1
PROJECT LOCATION MAPS Florence & Buffalo creek	2 and 3
PREVIOUS WORK AND EXPLORATION	4
REGIONAL AND GENERAL GEOLOGY	5
DESCRIPTION AND SUMMARY OF WORK	5
CONCLUSIONS AND RECOMMENDATIONS	6
RESULTS HAND SAMPLING AND SUPER SLUICE TESTS	PAGES 8 TO 12
PROSPECTING ACTIVITIES FIELD NOTES	PAGES 15 TO 21
VARIOUS FIELD MAPS	7 and 13
VARIOUS FIELD PHOTOS showing test pits	PAGES 21 TO 24
PROSPECTING PHOTOS right side pocket in folder	



- BUFFALO CREEK 2 MILE LEASE**
- TRAIL INTO FLORENCE CREEK FROM CARMACKS**
- BOOTS, TY, TC, AFE AND ORA CLAIMS. 2008, 2009 WORK SITES**
- 5 MILE LEASE DOWNSTREAM STAKED IN 2009**
- 5 MILE LEASE UPSTREAM STAKED IN 2009**



FLORENCE CREEK & BUFFALO CREEK

PLACER MAP 015H16

PLACER CLAIMS AND LEASES

(4)

INTRODUCTION

This report prepared for Diamond Tooth Resources. Funded under Target Evaluation grant 09-042 of the Yukon Mineral incentive program. (YMIP). A detailed summary of field activities and copies of field notes are included for Florence Creek and Buffalo Creek.

PROJECT SUMMARY

AREA 1 FLORENCE CREEK BOOTS 1-5, TY 1- 6 CLAIMS

Work in this area is prospecting for alluvial placer Au and PGE. 10,000 lb Kubota excavator was used to excavate thawed material from old timers work sites from late 60's and early 80's. Thawed material was than put through a super sluice box and concentrates were panned out. Areas that were frozen. The excavator was used to grub these areas and let ground thaw naturally for future testing.

AREA 2 FLORENCE CREEK TY 7and 8, TC 1-10

Work in this area is prospecting for alluvial placer Au and PGE. Defrost pits that were dug in 2008 were left to thaw. In 2009 Kubota excavator returned and excavated the defrost material. Sampling the thawed material from the bottom of the hole was collected into 20-liter pails and ran through a mini rocker box and concentrates were panned out recovering Au and PGE grains.

AREA 3 BUFFALO CREEK 2 Mile Prospect Lease 1W00262

Work in this area is prospecting for alluvial placer Au and PGE. Kubota excavator was used to excavate thawed placer gravels and stripped frozen areas for future sampling. Thawed material was collected into 20-litre pails and ran through a mini rocker box panning out concentrates.

AREA LOCATION AND ACCESS

The project area is located 124 km NE of Whitehorse and 45km SE of Carmacks. Florence Creek is located in the Whitehorse Mining District on Map 115H16. Access to the work area via a cat trail south of Carmacks. Driving through Carmacks, you cross the Nordenskiold River Bridge. Once across the bridge you take the first left onto the Mount Nansen road. On the Nansen road you travel 2km turning left onto the Buffalo lake cat trail. Staying right on this trail it will take you to Rawlinson creek about 7kms. From Rawlinson Creek to Buffalo creek is about 29km To Buffalo Creek another 6.5 km to Florence Creek. You will know when you get to Florence Creek. You will see a old rusty sluice box and old cat trench workings.

Traveling from Carmacks to Rawlinson creek lay down. You should have a 4 wheel drive. The trail can get slick with any amount of rain. Once you get to Rawlinson creek you will need a ATV 4 wheeler to cross the creek. Traveling to Florence creek the first 16kms trail is good. There are a couple small shallow creek crossings. The trail is mostly dry. Traveling into Florence Creek has been no problem with ATV.

PREVIOUS WORK AND EXPLORATION

Previous exploration work on Florence Creek goes back to the late 60's and early 80's. A cat trail was pushed into Florence in the late sixties. Cat trenches were dug and ground was thawed out allowing for a sluice box and grizzly to be brought in to mine. The sluice box has a 3ft x 28ft run with rail road iron used for a grizzly. It was feed with a cat pushing material into the sluice box. In 1990 a small 825 Bobcat was walked into Florence creek and did a small placer test recovering AU and PGE. In 2000 a hand test was done on the bench near where the old sluice box sits. PGE grains and a small amount of gold (grams)were recovered. Prospecting continued back in 2008 using a Kubota excavator recovering Au and PGE grains, Excavating these thawed out areas and testing virgin bedrock. Gold values increased on bedrock

REGIONAL AND GENERAL GEOLOGY

This area is underlain by hornblende granodiorite and porphyritic quartz monzonite granitoid rocks. Studies of surficial geology of the Florence Creek drainage south of Little Buffalo Lake show that the McConnell age glacial and glaciological deposits predominate (Huges 1989). Glacial deposits are generally composed of moraine colluvial blankets and moraine veneers on bedrock. However, glaciological plain, glacial fluvial terrace and complexes of both are also present. Northerly directed melt water channels of variable length follow topographic lows. Alluvial till is ultra mafic/basic and granodiorite cobbles mixed with decomposed granitics.

DESCRIPTION AND SUMMARY OF WORK

The first trip into Florence Creek was, July 2nd 2009. Actual work started July 3rd. A 10,000lb. Excavator was stored over the winter at Florence Creek. A 4 wheeler ATV, and a 1800lb. Dump trailer was used to transport fuel for the Kubota and supplies for camp from Rawlinson Creek lay down. The ATV 4 wheeler and dump trailer was also used to transport super sluice box, pump hoses to different test sites for sluicing (PHOTO 12).

AREA 1

Boots 1-5, TY1-6 claims. These claims have old timers workings that have thawed areas for doing testing. Testing these areas in 2008, 2009 with a Kubota excavator proved up promising results. Sampling thawed ultra mafic/basic granodiorite cobbles mixed with decomposed granite. This thawed material was screened down to 1 ½ inch with the Kubota and put through a small 1ft x 4ft run super sluice box. Water to the sluice plant was supplied by a 2" Honda pump. A box tender was needed to work the super sluice box. Raking riffles and keeping the sluice runs free from any surging. Once test was complete the nomad matting was taken out of the sluice runs, rolled up and put into a 20- liter pail. The concentrate from the mats were panned out and any Au or PGE was collected and weighed out.

AREA 2

This area is frozen with no old timers workings prior to 2008. In 2008 and 2009 a 10,000lb Kubota excavator excavated trenches and pits of different dimensions on the R/Limit and L/Limit of TY 7 and 8, TC 1-10 claims. Having some thaw from 2008 dig. In 2009 the Kubota excavated the existing pits of any thaw. Trying to dig down to bedrock excavating thawed material. Thawed material being ultra mafic/basic and granodiorite cobbles mixed with decomposed granite. Thawed material was collected into 20-liter pails and put through a mini rocker box. Concentrates were panned out and studied for any visible Au and PGE. Samples were saved in zip lock bags. Any test that showed any promising colors. When ground is defrosted, a volume test will follow.

CONCLUSIONS AND RECOMONDATIONS

Staking the BOOTS 2, 3, 4, 5, Claims in Sept. 2008, prospecting and testing thawed areas on these claims. Testing with Kubota excavator feeding a super sluice box in 2009 showed encouraging results. Test 01-09 recovered 97.4 mg in one yard of screened material on surface. Clean water was used for this test sluice. 06-09 test site showed the best hand panning results compared to all other test sites on Florence Creek in 2008 and 2009. Doing a volume test and recirculating water from a small water hole on site test sluicing 1 yard screened material. Only 60.5 mg of Au and visible Pt was recovered from this test. With the kind of panning we were getting in 06-09 pit compared to other test areas the results should have been better. I feel the water that was used for sluicing 06-09 was too muddy feeding the sluice box and Au and Pt. was being washed out the box. (PHOTO 5) In the future pumping clean water from a small tributary from about 350ft away could be used for water supply for testing this area. Only 200ft of hose was available for 2009 season.

Testing in 2008 on the bench at Florence creek and reaching bedrock, Au values increased closer to bedrock and on bedrock. Hand sampling in the creek Test 041-09 and 042-09 (PAGE 22) interesting colors were recovered on surface making values in the creek promising.

Across from 042 test. Test 08-09 bedrock was exposed hand testing 4-20 litre pails proved that volume testing to be done. Having a water source further than 200ft to do a sluice test. (PHOTO 7) A volume test was not done in 2009.

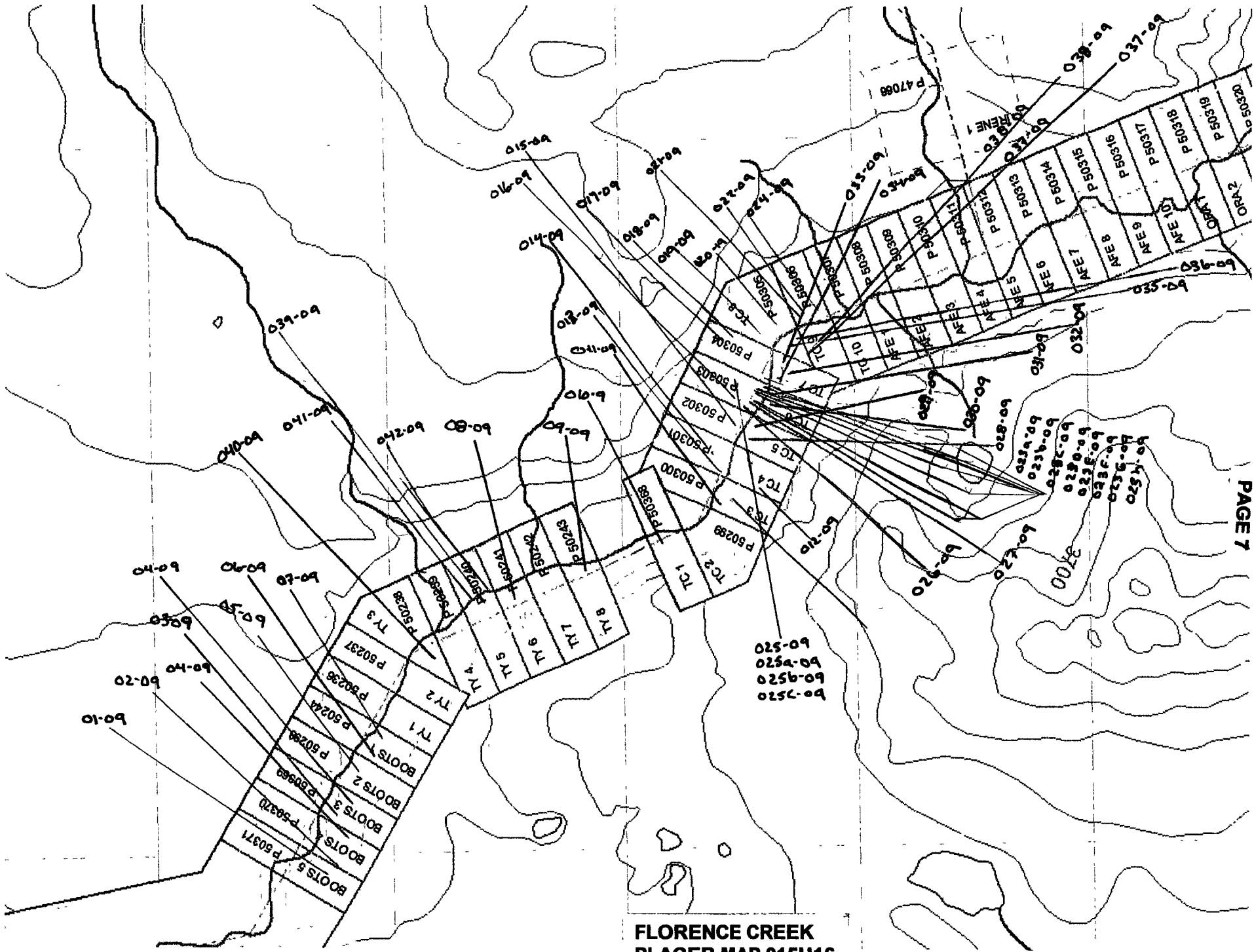
Areas tested on the L/limit bench, 50ft from high water on the creek bed (flats) returned interesting colors. These test areas need more defrosting followed by volume testing. On the R/limit across Florence Creek up on the bench. Test pits 23f, 23g, 23h, and test pits 016-09 - 022-09 and 024-09 (PAGE 24) never recovered any traces of Au and Pt. This area is all frozen and will have to thaw out to dig to a deeper depth to do a proper test to get any values. Testing down stream on this bench R/Limit which I proposed to do in 2009, did not take place because no Au or Pt was recovered on this bench. Having more thawed material on the L/Limit is where prospecting must take place. I chose to walk the Kubota upstream to do more testing on this L/Limit to access the TC10, AFE and the ORA claims. Prospecting as close to the 50ft high water line as possible to do testing. (PHOTO 8) shows the creek widening out with islands in the middle of the creek where thaw would be more plentiful for testing.

Prospecting up stream a few miles from ORA3 claim I sluiced out a couple 20litre pails of gravel Ultra mafic/basic cobbles. Panned some fine Au and a small speck of silver maybe Pt. Finding a number of bedrock out crops along this section was interesting. In order to prospect this area I stake 5 miles prospect lease up stream from ORA3 claim #2 post.

Going downstream from camp about 4 miles, I prospected a melt channel. Taking a couple 20-litre pails of side hill glacial till back to camp. This material was hand panned never showed any colors of Au or Pt. The panned out tailings from the 2-20 litre pails and the sluiced tailings from 06-09 (PHOTO 18 AND 19) had similarities 4 miles apart. The sediment stream assay from this area down stream 4 miles returned the highest Au anomaly reading for all Florence Creek and Buffalo Creek water shed.

A 5 mile prospect Lease was staked down stream from Boots5 claim #2 post.

BUFFALO CREEK The area where testing was done no bedrock was reached. Tests on the trail were thawed. Traces of Au and a small tiny silver trace was recovered. Defrost pits dug closer to the creek need more thawing. Once these pits are defrosted volume sampling can take place.



**FLORENCE CREEK
PLACER MAP 015H16
TEST PIT SITES 2009**

PLACER TEST RESULTS FLORENCE CREEK 2009 SEASON

CLAIMS	TEST	RESULTS
Boots 5 L/L	01-09 1 yard of screened material sluiced	Au 97.4 mg
Boots 4 L/L	02-09 1 yard of screened material sluiced	Au 33mg
Boots 3 L/L	03-09 panning. Panned colors	Au colors
	04-09 frozen	No sample
Boots 4	04-09 frozen	No sample
Boots 2	05-09 frozen	No sample
Boots 1 L/L	06-09 1 yard of screened material sluiced	PGE grains Au 60.5mg
	07-09 frozen no sample	
TY 6 L/L	08-09 4 - 20 litre pails put through super sluice and panned	Au 15mg
TY 8 L/L	09-09 new pit excavated. Frozen	no sample
TC 1 L/L	010-09 1-20 litre put through mini rocker, trace black sand	No Au
TC 3 L/L	011-09 no gravel decomposed granite mixed with blue clay 1-20 litre pail put through mini rocker recovered black sand	No Au
TC 4 L/L	012-09 Defrosted pit from 2008, thawed got sample at 71ft granodiorite And ultra mafic/basic foot ball size cobbles. Ran 2-20 litre Pails trough mini rocker recovered black sand interesting colors	Au & PGE
TC 4 R/L	013-09 Defrosted pit across Florence from 2008. Thawed, got sample at 8ft. Granodiorite and ultra mafic/basic foot ball size cobbles. Ran 2-20 litre pails through mini rocker. Recovered Black sand and interesting colors	Au
TC 4 R/L	014- 09 Defrosted pit from 2008 very spongy and wet. Too wet to walk excavator and collect sample	No sample
TC 5 R/L	015-09 Defrosted pit from 2008 thawed glacial brown clay sitting on Top of ultra mafic/basic and granodiorite cobbles. Ran 1-20 Litre pail through mini rocker box. Recovered trace black sand	No Au
TC 6 R/L	016-09 Defrosted pit from 2008, thawed down 5ft. Ultra mafic/basic And granodiorite over size rounded cobbles 2ft x 2ft in size On surface. Decomposed granite mixed with black muck and ultra mafic/basic granodiorite cobbles. Ran 1-20 litre pail through Mini rocker recovered black sand	No Au
TC 7 R/L	017-09 Defrosted pit from 2008 thawed to 4ft in depth. Stock piled thawed black muck and decomposed granite and ultra mafic/basic granodiorite cobbles. Sluiced 1-20 litre pail panned out concentrate. Recovered black sand	No Au

(9)

CLAIMS	TEST		RESULTS
TC 7	R/L 018-09	Sample was taken from side of trail, thawed from 2008. Hit frost at 4 1/2 ft. Stock piled thawed black muck and decomposed granite and ultra mafic/basic granodiorite cobbles. Sluiced 1-20 litre pail, panned out concentrates. Recovered black sand	No Au
TC8	R/L 019-09	Sample was taken from side of trail, thawed from 2008 Hit frost 4ft. Black muck mixed with ultra mafic/basic granodiorite cobbles on surface. Sluiced 1-20 litre pail of wet ultra mafic/basic mixed with decomposed granite. Recovered black sand .	No Au
TC8	R/L 020-09	Sample was taken from side of trail, thawed from 2008 Hit frost at 4ft. Black muck and ultra mafic/basic granodiorite Cobbles on surface. Sluiced 1-20 litre pail of ultra mafic/basic Mixed with decomposed granite. Recovered black sand.	No Au
TC8	R/L 021-09	Sample was taken from side of trail, thawed from 2008. Hit frost at 4 1/2ft. Black muck and ultra mafic/basic Granodiorite cobbles on surface. Sluiced 1-20litre pail Of ultra mafic/basic mixed with decomposed granite. Recovered black sand.	No Au
TC9	R/L 022-09	Defrost pit from 2008 defrost. Dug down 4ft hit frost. Black muck mixed with ash. Ecavatingthis pit last year we got a very tiny speck of gold in the white ash. Will have to wait for mother nature to defrost this pit.	No sample
TC6	R/L 023a-09	Dug pit 4ft deep on creek flats, oversize size 3ft x 4ft ultra mafic/basic granodiorite boulders on surface, mixed with smaller size ultra mafic/basic granodiorite and decomposed granite. Sluiced 2-20 litre pails. Recovered heavy black sand	No Au
TC6	R/L 023b-09	Dug pit 5ft on creek flats hit frost, oversize 3ft x 3ft ultra mafic/basic granodiorite boulders, mixed with smaller size ultra mafic/basic granodiorite and decomposed granite. Sluiced 2-20 litre pails. Recovered heavy course black sand and Interesting colors gold	Au
TC6	R/L 023c-09	Dug pit thawed got down 7ft. Surface granodiorite and ultra mafic/basic 3ft x 4ft boulders mixed with smaller granodiorite and ultra mafic/basic cobbles. Hit water table. Sluiced 2-20 litre Pails. Recovered heavy course black sand	No Au
TC6	R/L 023d-09	Dug test near side hill trench by creek flats. Dug down 6ft hit top of water table. 3ft x 3ft ultra mafic/basic and granodiorite boulders on surface. Ultra mafic/basic granodiorite cobbles mixed with decomposed granite was tested. 2-20 litre pails was Sluiced. Recovered heavy black sand and interesting colors	Au PGE

CLAIMS TEST		RESULTS
TC6 R/L 023e-09	Halfway up side hill trail above creek flats. Over size boulders from colluvium 5ft x 4ft mafic/basic and granodiorite boulders. Ultra mafic/basic and granodiorite cobbles mixed with decomposed granite material was tested. 2-20 litre pails were Sluiced. Recovered black sand	No Au
TC7 R/L 023f-09	Top of side hill above creek dug pit 4ft hit frost. Scratched Around over size 2ft x 3ft cobbles of granodiorite. Sampled decomposed granite mixed with granodiorite and ultra mafic/basic cobbles. 2-20 litre pails were sluiced out. Recovered black sand.	No Au
TC7 R/L 023g-09	Side hill trench hit frost 3ft. 1ft black muck. 2ft thawed wet Ultra Mafic/basic gravels mixed with decomposed granite. 1-20 litre pail was sluiced. Recovered black sand.	No Au
TC7 R/L 023h-09	End of side hill trench. Hit frost dug down 3 1/2 ft. 1 1/2ft of over burden. One over size 4ft x 3ft ultra mafic/ basic boulder sticking out of over burden. Scratched up sample of Decomposed granite and ultra mafic/basic material. 1-20 litre Pail was sluiced . Recovered blak sand	No Au
TC9 R/L 024-09	End of trail. Wet area. Sampled 1 pan of black muck decomposed granite. Recovered trace of black sand.	No Au
TC6 R/L 025-09	Dug pit on thawed trail from 2008 thawed 6ft. Uncovered 1ft x 2ft cobble. Mixed with rusty decomposed granite and ultra mafic/basic material. Sluiced 1-20 litre pail Recovered black sand	No Au
TC6 R/L 025a-09	Dug pit on thawed trail from 2008 thawed 6ft. football size ultra mafic/basic cobbles mixed with rusty decomposed granite. Sluiced 1-20 litre pail. Recovered black sand	No Au
TC6 R/L 025b-09	Dug pit on thawed trail from 2008 thawed 6ft. Ultra mafic/basic granodiorite football size cobbles Mixed with rusty decomposed granite. Sluiced 1-20 litre Pail. Recovered black sand	No Au
TC6 R/L 026-09	Dug pit on creek flats 60 ft from high water. Thawed pit Dug down 6ft. One over size ultra mafic/basic boulder 4ft x 5ft on surface mixed with over size ultra mafic/basic and Granodiorite cobbles mixed with decomposed granite. Sluiced 2-20 litre pails. Recovered course black sand. Couple interesting colors Au.	Au

CLAIMS	TESTS		RESULTS
TC6	R/L 027-09	Dug pit on creek flats 60 ft from high water. Thawed pit Dug down 7ft hit top of water table. Dug around over size ultra mafic/basic 2ft x 3ft cobbles. Collected from bottom of Hole ultra mafic/basic and granodiorite material mixed with decomposed granite. Sluiced 2-20 litre pails. Recovered Coarse black sand and interesting Au colors	Au
TC5	L/L 028-09	Dug pit on creek flats 60ft from high water. Thawed pit Dug down 6ft. Dug out over size ultra mafic/basic and Granodiorite football size cobbles, mixed with decomposed Granite. Sluiced 2-20 litre pails. Recoverd course black sand. Couple colors of gold.	Au
TC5	L/L 029-09	Dug pit on creek flats 60 ft from high water. Semi thawed pit. Dug down 5ft hitting over size ultra mafic/basic cobbles On surface. Orange colored decomposed granite and mixed with ultra mafic/basic cobbles was dug from the bottom of pit. 2-20 litre pails were sluiced. Recovered course black sand And couple interesting colors gold	Au
TC6	L/L 030-09	Side hill trench 4ft deep over size granodiorite 2ft x 2ft size cobbles on surface. Football size ultra mafic/basic Cobbles mixed with ultra mafic/basic decomposed granite. 2-0 litre pails were sluiced. Recoverd black sand and 1 garnet	No Au
TC6	L/L 031-09	Side hill trench 4ft deep. Fine decomposed granite mixed with Ultra mafic/basic football size granodiorite. Sluiced 1-20 litre Pail. Recovered fine black sand	No Au
TC7	L/L 032-09	Wet thawed till mixed with ultra mafic/basic cobbles	no sample
TC7	L/L 033-09	From side hill trench 5 ft deep hit frost. Ultra mafic/basic And granodiorite football size cobbles mixed with Decomposed granite. Sluiced 1-20 litre pail. Recovered Fine black sand no Au	No Au
TC7	L/L 034-09	Side hill trench 4ft deep hit frost. Ultra mafic/basic and granodiorite football size cobbles mixed with decomposed Granite. Sluiced 1 20- litre pail. Rcovered fine black sand	No Au
TC8	L/L 035-09	Side hill trench 4ft deep frozen. Different small gravels Mixed golf ball size and football size cobbles Of ultra mafic/basic and granodiorite mixed with decomposed Granite sand . Sluiced 2-20 litre pails. Recovered black sand	No Au
TC8	L/L 036-09	Side hill cut 2 1/2ft deep hit frost over size granodiorite boulders	
TC9	L/L 037-09	up to 3ft x 2ft - 5ft x 5ft sitting on surface. Sluiced 1-20 litre pail from each test. Decomposed granite and baseball size	
TC9	L/L 038-09	Ultra mafic/basic material. Recovered fine black sand no Au	No Au

CLAIM	TEST		RESULTS
TY5 L/L	039-09	Dug test pit below rock bluff near old sluice box. Hit frost at 5ft. Ultra mafic/basic and granodiorite cobbles hit water sampled 1-20-litre pails recovered coarse black sand and 1 color	Au
TY3 L/L	040-09	Dug three test pits at cross roads. Excavated fine decomposed Granite. Never reached bedrock. Sluiced 1020 litre pail from Each pit. Recovered coarse black sand.	No Au
TY4 L/L	041-09	Hand testing shovelling into mini rocker on creek islands. Sluicing 2-20 litre pails Panning concentrates. Recovered interesting colors	Au
TY5 L/L	042-09	Hand testing shovelling into mini rocker on creek island. Sluicing 2-20 litre pails Panning concentrates. Recovered interesting colors	Au

LSC S-227B1

2 MILES

- buf 03-09
- buf 04-09
- buf 01-09
- buf 02-09
- buf 05-09
- buf 06-09

IW00262

TRAIL TO Florence Creek

NE
WILD

BOOTS

**BUFFALO CREEK
PLACER MAP 015H16
TEST PIT SITES**

(14)

PLACER RESULTS BUFFALO CREEK
2 MILE PROSPECT LEASE 1W00262

TEST		RESULTS
R/L Buf 01-09	Dug pit on trail 7ft deep thawed. Manganese stained granodiorite Baseball size and football size cobbles and ultra mafic/ basic material Mixed with decomposed granite. Sluiced 2-20 litre pails. Recovered Course black sand and trace of gold.	Fine color Au
R/L Buf 02-09	Stripped pit, dug down 2 1/2ft hit frost. Frozen black muck.	No sample
R/L Buf 03-09	Stripped pit down 2 1/2ft hit frost. Manganese stained granodiorite And ultra mafic/basic baseball size cobbles mixed decomposed Granite. Sluiced 1-20 litre pail. Recovered black sand no Au	No Au
L/L Buf 04-09	Dug test pit 65ft from high water. Dug 4ft deep hit frost. Manganese stained granodiorite and ultra mafic/basic foot ball size cobbles Mixed with decomposed granite. Sluiced 2-20 litre pails. Recovered coarse black sand fine Au and Pt fine colors	Fine colors Au Pt
L/L Buf 05-09	Dug pit 2 1/2ft deep hit frost thawed black muck mixed with Granodiorite football size cobbles no sample	no sample
L/L Buf 06-09	Dug pit 60ft from high water next to creek. Hit frost at 4ft deep. Manganese stained granodiorite football size cobbles a couple football size semi round ultra mafic/basic cobbles mixed with Decomposed granite. Sluiced 2-20 litre pails. Recovered coarse black and 1 tiny trace of gold.	Au

PROSPECTING AND FIELD ACTIVITIES

July 1st Wednesday Loaded up prospecting supplies and ATV 4 wheeler and dump trailer onto support trailer. Loaded up flat deck on Dodge. Gay loaded up ford 4x4 ford. I e-mailed Steve Traynor about prospects for 2010.

July 2nd Thursday Gay and I left for Florence Creek. Arrived Rawlinson Creek laydown at 2pm. Organized some of the prospecting equipment onto ATV dump wagon. Off to Florence Creek. Crossing Fritz Creek we bottomed out entering the crossing. The front axle on the tandems on the dump got bent. We limped on to Florence Creek. Took 5 ½ hrs and usually takes 2 ½ hrs. We set up primitive camp. Kubota excavator stayed in Florence over the winter. I walked to Kubota excavator. Checked lubes, Kubota started no problem. Blew up air mattress. Slept under the stars.

July 3rd Friday Walked Kubota from Boots 1 and 2 claim posts downstream to Boots 3 and 4 claim posts. Along the way I grubbed a trail for the 4 wheeler to travel on. We dropped trailer at new camp site claim posts Boots 3 and 4. Gay drove 4 wheeler ATV to old camp site from 2008. She picked up gold pans shovel, mini rocker and some camping supplies. Finding thawed material on surface I started digging test holes 03-09 on the Boots 3 claim close to Boots 3 and 4 post. I dug down 5ft hit frost. Piled up granodiorite and ultra mafic/basic material. Gay gathered sample at 03-09

July 4th Saturday Gay drove 4 wheeler ATV back to old camp site. Picked up panning tub and more prospecting supplies. I started to strip trench 04-09 on Boots 4 claim. Area is frozen.

July 5th Sunday I walked Kubota excavator to Boots 4 and 5 claim posts. Grubbing old trail from the old timers removing and grubbing second growth. Thawed area near old timers camp site. Started digging granodiorite and ultra mafic/basic alluvial surface material. Digging down I hit a clay seam. Under the clay seam I 6'' and 8'' alluvial gravels sitting on top of granodiorite decomposed bedrock. Gay drove 4 wheeler ATV to Rawlinson and got more fuel. Gay gathered 20 litre pails of clay contact gravels and gravel contact on decomposed bedrock.

July 6th Monday sampled 02-09. I walked Kubota back to 04-09 dug out 6'' frost still frozen. Dug out some more gravels on 03-09

July 7th Tuesday stripped huge area down to frost on area on 04-09. Gay sampled

July 8th Wednesday Gay and I did walk around looking for place closer to camp to do hand testing. Found a small trip near camp Magoon creek. Flagged area out. Started stripping hit frozen black muck. Setting up camp in our spare time.

July 9th Thursday Gay and I drove 4 wheeler and checked out last years 2008 trenches upstream to TC4 claim. Crossed Florence Creek. Water is low this season compared to last season 2008. Some dry and wet areas. Wet areas look to be a problem and will need some fixing up with Kubota. I drove Gay to Rawlinson Creek landing. She is going to Whitehorse to get some supplies. I brought more fuel back into Florence.

July 10th Friday I walked Kubota back to 02-09 trench. I started new trench 01-09. Started stripping and setting up for volume testing at a later date. Gay radio phoned and said she will be ready for pick up on Saturday.

July 11th Saturday I did some more stripping 01-09. Made a water hole to collect water for sluicing 01-09 and 02-09. Went to Rawlinson with 4 wheeler and picked up Gay and supplies.

(16)

July 12th Sunday Gay sampled 03-09. Gathered samples from 01-09 and 02-09. I worked on preparing for volume test 02-09 with the excavator.

July 13th Monday Cool rain off and on. Gay sluiced 02-01 panned interesting colors. I made the sump bigger at water hole excavating frozen clay layer mixed with gravel.

July 14th Tuesday Hot Worked on 01-09 started settling pond for sluicing. Gay sampled clay and gravel contact. Gumbo clay very difficult to separate from gravel. I walked Kubota back over to 02-09. Found some thawed material. Exposed clay layer digging down 4ft hit gravel cobbles 4''- 6'' in size. I exposed a seam 8'' thick of these cobbles granodiorite ultra mafic/ basic sitting on decomposed granites.

July 15th Wednesday I took advantage of the thawed bedrock with the excavator. I exposed and stripped a large area. Stripping the clay off of the gravel contact near bedrock. I excavated the gravel and decomposed bedrock contact 8'' to a 1ft thick. Stock piled this material into a pile for future sluicing. Gay sampled the seam of gravel and got lots of black sand. (PHOTO3)

July 16th Thursday Walked Kubota back to new camp at Boots 3 and 4 claim post. Did some more stripping 04-09 170' x 75 x 1.5ft deep frozen black muck. Did some more stripping 03-09 granodiorite gravels and ultramafic basic material. Gay sampling.

July 17th Friday Gay went to Rawlinson Creek to pick up 2'' pump and hose. More fuel. I stripped a trail to water hole that Gay and I flged out on the 8th. I dug water hole closer to camp with excavator and Stripped 180' x 25' wide area when defrosted will make a good area to do a volume test, water is close for sluicing. Gay is back from Rawlinson. Gay gathered samples out of water hole gumbo clay contact.

July 18th Saturday I'm starting to walk Kubota upstream on the L/Limit bench of Florence creek. Started to strip 05-09 trench. This trench crosses an old channel glacial fluvial? Trench is frozen got down 1' 1/2ft. Gay sampled gumbo clay out of water. No Au

July 19th Sunday Gay went back to Rawlinson and picked up more fuel. I stripped more over burden off of 05-09. Gay did more testing panned colors from 03-09.

July 20th Monday Finished stripping 05-09. Gathered up empty fuel jugs. Gay and went to Carmacks to get fuel and check e-mails at Coal Mine Camp site. Excess fuel is stored in cono cover of ford pic-up. Drove 4 wheeler ATV back to Carmacks.

July 21st Tuesday Gay went back to Rawlinson to get more fuel. Having trailer axle broken on ATV dump trailer makes more trips with 4 wheeler ATV. I walked Kubota excavator to Boots1 claim 10-02-08 was the pit number in 2008 and is being changing to 06-07 for 2009. Dug down 4ft hit water table. 3ft x 3ft ultra mafic/basic and granodiorite boulders. Dug out material for sampling. Repaired a couple soft spots on trail with Kubota.

July 22nd. Wednesday very windy. Finished digging 06-09. Tough digging with over size material in the way. 1ft soil, 8'' white ash. Digging down 4ft I exposed some mafic/basic and granodiorite cobbles mixed with decomposed granite. This material will be screened at a later date. Gay can collect sample of this material. Dug a pond for doing volume sluice test. This area needs more thawing. Gay gathering samples and sampling

July 23rd Thursday finished digging 07-09 trench from last years thaw. Tried to get into glacial gravels mafic/basic and granodiorite. Only got down 6ft still into frozen black muck. Across the trail I dug into last years pit. Still frozen not much of a sample. stock piled for putting into 20 liter pails. Gay sampling

(17)

July 24th Friday I walked Kubota back to Boots 5 claim. Used 2'' pump and washed out rad of Kubota. The clay at 02-09 pit is dry enough to separate from gravels. I stockpiled some more ultra mafic/basic and granodiorite gravels for a volume test. Gay took a couple pans of this small seam between the clay and gravel contact on the rusty decomposed granite bedrock. Got more than normal amount of black sand.

July 25th Saturday Stripping clay seam off of gravel seam that sits on decomposed granite bedrock. Gay gathering 20 litre pails and sampling.

July 26th Sunday Finished stripping clay layer separating clay from gravel for volume test. Walked Kubota back to 03-09 at camp near Boots 3 and 4 claim posts. Dug some more in 03-09 pit hit frost. Gravel thawing slowly.

03a-09 and 03b-09 is changed to 04-09 Water hole is 04-09 along with defrost pit beside camp Boots4 claim. Clay layer is frozen at the water hole. Did a walk around for the next area that I chose to have a defrost pit. Not far from the water hole. Gay panning and sampling.

July 27/09 Monday Hot Walked Kubota to pit 06-09 stripped some more overburden down to frost. Hard digging around over size rocks loose from frozen material. Gay and I went to Rawlinson creek. Gay went to Whitehorse for supplies. I brought more fuel back to Florence Creek.

July 28th Tuesday I walked Kubota back to 02-09 and washed out rad. I stock piled more gravel sitting on top of decomposed bedrock. Stock piled decomposed bedrock for a separate test. Talked to Gay said she will need to be picked up on Wednesday.

July 29th Wednesday Lots of smoke very hot. Worked on settling pond 02-09 finished stock piling and preparing for sluicing. Off to pick Gay up at Rawlinson. Checked in at Forestry at Carmacks to see where fires are burning. The Ranger told me the closet fire was 30kms away at the Buffalo corrals. The winds are blowing away from Buffalo Lake and we will be ok. He said there is a no burn ban on. No camp fires. I brought Gay and more fuel back to camp. Got back 1am.

July 30th Thursday Gay went back to Rawlinson laydown with 4 wheeler and dump trailer to pick up some plywood and tin for camp. She got back late and bent an axle on the dump trailer. I finished preping and digging a settling pond on 02-09.

July 31st Friday Its Hot. I moved over to 01-09 with Kubota. Started settling pond for sluicing. Gay went sampling with mini rocker on Florence Creek. 041-09 042-09, taking advantage of low water. I finished up at 01-09. Walked Kubota back to 03-09 marked out a couple dry logs for screen plant feed to sit on. Will cut these logs when it cools down.

Aug. 1st Saturday Started walking Kubota upstream from camp. On the way I dug out thaw from frozen pits 03-09 04-09 down to frost. Dug out placer samples for sampling. Walked machine to Boots 2 claim. Serviced Kubota. Gay gathered samples for test panning.

Aug. 2nd Sunday Worked on 05-09 defrost pit. Making pit larger. Hit boulders sticking out in the frozen black soil. Finished stripping 05-09 defrost pit. Walked Kubota up to TY1 claim dug out more thaw on 07-09 frozen black muck no gravel.. Collected a sample for sampling across trail from 07-09 pit fro last years pit still frozen. Gay is sampling. Walked Kubota upstream to TY8.

(18)

Aug. 3rd Monday I started digging defrost area 09-09 on TY8 claim. Stripped of moss and trees. Hit frost. This site is close to water source. the creek. I finished stripping 09-09. I stripped trench 010-09 last years defrost pit excavating thawed black muck and white ash mixed with layers of decomposed granite. Got down 8ft hit frost. Stock piled sample for testing. Defrost pit 011-09 on TC3 claim. 2 1/2ft colluvial boulders on surface. Excavated 3 1/2ft thawed black muck no ash 4 1/2ft of glacial til gravel and clay Decomposed granite with layers of green blue clay on bottom of thawed pit. Hit frost at 8ft. Stock piled sample for testing . Gay collecting samples.

Aug 4th Tuesday Walked Kubota upstream to TC4 012-09 defrost pit from 2008. 18'' white ash on surface. 3ft black muck. Granodiorite and ultra mafic/basic boulders blended in with thawed black muck. Excavated football size ultra mafic/basic and granodiorite mixed with decomposed granite. Buried my boom down 11ft thawed all the way. Stock piled sample for testing. This area is very wet and spongy. Still needs drying out. Material was like wet concrete. Stock piled sample. Gay is sampling.

Aug 5th Wednesday Walked Kubota across Florence creek R/Limit. 013-09. Last years defrost pit. Dug 2ft -3ft thawed black with white ash mixed in. Some over size Ultra Mafic /basic cobbles and granodiorite boulders on surface. Pit is very wet, sloopy and spongy. Stock piled sample for testing. Gay sampling. Gay picked me up with 4 wheeler ATV at end of shift.

Aug. 6th Thursday Walked Kubota upstream to 014-09. This area is very spongy and wet. Tried to get into pit and collect placer sample with excavator. Was not possible. No sample for 014-09. Walked Kubota up to 015-09. Collected sample glacial till colluvial material mixed with black muck, ash sitting on top of decomposed weathered rusty granite mixed with football size cobbles of ultra mafic/basic and granodiorite. No over size boulders were exposed. Stockpiled sample for testing. Walked Kubota down towards the creek flats. Started stripping areas for pits 023A- 023H. Hard digging over size cobbles and some frost. Pits 016-09, 017-09, 018-09,09-09, 020-09,021-09,022-09 are situated higher on the bench upstream and will be excavated at a later date. Still very hot. Gay hand sluicing. Washed out radiator on Kubota.

August 7th Friday TC7 claim. Smoky trying to rain. Excavated pits 23A-09 and 23B-09. Pits were thawed. Excavated around over size boulders 3ft x 2 1/2ft (PHOTO 14) ultra mafic/ basic and granodiorite mixed with decomposed granite. Some wet clay on surface. Stock piled samples for testing. Gay gathered samples. I Reclaimed these 2 pits.

Aug. 8th Saturday Finally getting rain. Gay stayed in camp and sampled. I drove 4 wheeler ATV to TC7 and dug pits 023C-09, 023D-09 and 023E-09. Dug out over size boulders on surface. Ultra mafic/basic and granodiorite cobbles mixed with decomposed granite were excavated. Samples were stockpiled for testing. These pits were reclaimed to keep trail open.

Aug. 9th Sunday Finished digging test pits 023F-09, 023G-09, 02H-09. Excavating over size boulders with ultra mafic/basic and granodiorite cobbles. Stock piled samples for testing. Back filled pits to keep trail open. Gay is taking samples from pits. Starting to rain. Rained heavy all night.

Aug 10th Monday Having a hard time to sample on this side hill trench. Will start my way up to 022-09 pit from last year. Side hill is very wet making sampling on some of the pits impossible. Will dig trenches and ditches off and on the trail to collect samples. Cleaning up last years trail on the way to 022-09 pit. Taking advantage of the thawed moss and black muck making the trail smother and dryer to travel on. Dug samples 016-09, 017-09, 018-09 from side of trail. Black muck mixed with cobbles of decomposed granite. Stock piled samples for testing. Gay sampling at camp.

(19)

Aug. 11th Tuesday Dug pits 019-09, 020-09, 021-09 with Kubota excavator along side of trail. Collected samples alongside of trail for testing. Black muck mixed with cobbles of ultra mafic/basic and decomposed granite. Stock piled samples for testing. Gay collecting and sluicing samples.

Aug. 12th Gay panning samples in camp. I drove 4 wheeler ATV to Kubota. I walked Kubota up to pit 022-09. I dug down 4ft hit frost. Excavated black muck and white ash. Never got sample. Taking GPS readings of pit's on the way back to camp. Packing up to go to Rawlinson landing than Whitehorse for fuel and supplies. Arrived Army beach 9pm. Gay staying in camp to sample.

Aug. 13th Charlie in town getting fuel and supplies. Gay sampling at Florence Creek.

Aug 14th Charlie in town getting fuel and supplies. Gay sampling at Florence Creek.

Aug 15th Charlie drove back to Florence creek with fuel and supplies. Gay sampling at Florence Creek.

Aug 16th Sunday. Gay drove me to the R/limit of Florence Creek to pit 022-09 to work on 024a-09 and 024b-09. These two pits will become 024-09 pit. Have had lots of rain making every thing wet for excavating. Using lots of moss to get footing for Kubota to sit on so not to get stuck. Hitting lots of frost on 024-09 dig. Doesn't look promising to get to TC and AFE 1 claim from this Petes Gulch. Gay sampling in creek with mini rocker and gold pan.

Aug 17th Monday Worked on trench 024-09. Hitting to much frost and thaw making it difficult to dig on the side hill. PHOTO10 I'm pulling out will find another way to get to TC10 and AFE1 claims. Gay collected a sample from trench -24-09

Aug. 18th Tuesday Starting to walk Kubota excavator down to creek. Walking on the thawed trail from 2008. I found some thaw and excavated 3 pits. 025-09, 025a-09, 025b-09. 10ft x 10ft x 6ft deep. These pits were dug on the trail and were back filled to keep trail open. Gay collecting samples.

Aug. 19th Wednesday Finished walking Kubota down to R/Limit of creek. About 20 meters from high water. (pits 26a and 26b are changed to 026-09, 027-09) Dug pits 026-09, 027-09. Dug around oversize boulder. Material is ultra mafic/basic and granodiorite cobbles. Material is thawed. Stock piled material for sampling. Gay collected samples. Gay hooked up two inch pump. I walked Kubota to pump and washed out rad and cleaned off tracks. To cross creek.

Aug.20th Thursady Walked Kubota across creek to L/Limit. Once across Gay I went for walk around on foot. We flagged off a trail for Kubota to follow. Dug pits 028-09 029-08 60ft from high water on creek. Stock piled sample. I walked Kubota to side hill trench and started 03-09. Gay sampling at creek.

Aug. 21st Friday. I finished digging side hill trench 030-09. Gay panning samples from 026-09, 027-09.

Aug. 22nd.Saturday Excavated thawed area dug out 031-09. L/Limit Florence Creek. Stock piled sample from bottom of pit. Gay sampled.

Aug 23rd Sunday Started sid hill trench 032-09. Wet area. Dug and cut a couple swales on trail to help dry drain side hill trench. Gay panning samples.

Aug.24th Monday Finished digging side hill trench 032-09. Very muddy. Track came off of Kubota (PHOTO15) Gay went to Rawlinson creek to pick up fuel and supplies and to phone Janice at YGS. I walked back to camp to get tools to put back track back on.

(20)

Aug. 25th Tuesday Gay and I drove 4 wheeler ATV back to the excavator with tools to loosen track on excavator. We put track back on excavator. Finished digging 033-09 pit. Stock piled material for testing. Gay sampled. Stared pit 034-09 stock piled material from 034-09.

Aug. 26th Wednesday Started side hill trench 035-09. Excavating interesting gravels mafic ultra mafic/basic and granodiorite mixed with decomposed granite sand. Stock piled sample for testing. Gay gathering samples. I started excavating side hill trench 036-09.

Aug 27th Thursday Finished working on side hill trench 036-09. Started Excavating 037-09 and 08-09 excavating ultra mafic basic and granodiorite cobbles mixed with decomposed granite. Stock piled sample for testing. Got to the top of the bluff looking over R/Limit of TC10 and AFE1 claims. PHOTO 09 Next years prospect. Gay gathering samples. Started to walk excavator to Buffalo creek.

Aug. 28th Friday Packed up empty fuel jugs. Charlie off to Whitehorse. Dropped Gay off at excavator on the way to Rawlinson creek. she will walk machine to Buffalo creek and start stripping. I ribboned off pits for Gay to strip on way to Whs. Going by Buffalo Creek. I'm got back late to Florence Creek picked Gay up at Buffalo creek. Drove back to camp at Florence.

Aug. 29th Saturday Drove back to Buffalo Creek finished digging 3 test pits. Buf 01-09, buf02-09, buf 03-09. On the R/Limit of Buffalo creek. Gay gathered samples and sluiced them out. Drove back with 4 wheeler ATV to Florence Creek camp.

Aug. 30th Sunday Drove 4 wheeler back to Buffalo Creek. I walked Kubota across creek L/Limit. Dug out pit buf 03-02, buf 04-02. Excavated and stock piled sample for testing. Gay gathered samples sluiced samples. I stripped Buf 05-09. Drove back to Florence Creek with 4wheeler ATV. Gay has to go to Whitehorse in the am.

Aug. 31st Monday Drove 4 wheeler ATV to Buffalo Creek. Gay dropped me off and took 4 wheeler back to Rawlinson and drove Ford pic-up to Whitehorse. I finished digging buf 05-09 to frozen to collect sample. Excavated pit buf 06-09. Stock piled sample for testing. I put test buf 06-09 through mini rocker, panning out concentrates. Walked Kubota back to Florence creek walking machine to cross roads at Florence Creek. From here I walked to camp. Gay brought more fuel and supplies back to camp with 4 wheeler ATV. She got back at 9:30 at night.

Sept. 1st Tuesday Walked Excavator to rock bluff near old sluice box. This is where Tom Morgan and I did a volume test in 2000. Test pit 039-09. Excavated ultra mafic/basic and granodiorite cobbles, mixed with decomposed granite. Hit frost at 5ft. Stock piled material for testing. Walked excavator back to cross roads. Dug three pits at 040-09. Gay gathered samples and sluiced them out. I walked Kubota to 06-07.

Sept. 2nd Wednesday. Started prepping 06-09 for sluicing. Gay panned interesting colors at this site. Stock piled sluicing material for screening.

Sept. 3rd Thursday. Walked Kubota to 02-09. On the way just before camp I dug out thawed black muck that was sitting on the trail and was ponding with water. Dug to frost and drained off the water. Did some more prep work on 02-09. Pit is very wet and was good timing to stock pile material for sluicing when it was much dryer in July. Gay brought pump and hose to 02-09. Gay set up pump and hoses.

(20)

Sept. 4th Friday dug out slop and wet mud at entrance to 02-09. Replaced muddy material with dryer material to make proper ramp to walk excavator into pit. Gay and I set up sluice box. Putting mats and expanded metal in the sluice runs. Sluiced 1 yd of screened material through the super sluice. Got colors. Ran 1 yard of decomposed granite bedrock through the sluice plant got traces of colors. Gay worked sluice runs.

Sept. 5th Saturday Gay took sluice plant apart. I walked Kubota over to 01-09 test site. Finished of settling pond. For sluicing.

Sept. 6th Sunday Screened Ultra mafic/basic cobbles mixed with decomposed granite, down to 1 ½" size for sluicing. We moved sluice plant over to test sit 01-09. Set up super sluice and hooked up hoses.

Sept. 7th Monday Gay and I sluiced 01-09. Gay keep the runs from overflowing. Put 1 yard trough. Gay cleaned up top run panned out nice colors. We took super sluice apart. Loaded sluice plant and pump and hoses onto 4 wheeler ATV and dump trailer. Gay drove 4 wheeler and ATV dump trailer to 06-09 test site. I walked Kubota to camp for service.

Sept. 8th Tuesday Bill Labarge came out to camp with Helicopter. We loaded gold pans, pick, shovel, 20-litre pails and mini rocker box in helicopter. We flew 7 miles upstream. Landed and did a volume test. Got very fine gold and 1 tiny piece of silver looking mineral Pt? We flew 4 miles down stream and landed and collected 2-20 litre pails of placer gravels for panning out at a later at camp. Bill flew back to Carmacks. I did oil change on Kubota excavator.

Sept.9th Wednesday I walked Kubota upstream to 06-09. Finished off settling pond. Screened and stock piled material down to 1 ½" for sluicing. Gay and I set up sluice plant and hooked up hoses and pump. We only have a small amount of water for this test. We will be recirculating the water. Only need 50ft of hose. Sluiced 1 screened yard of material. Ran out of clean water. Panned out top run. Gold is looking courser still no bedrock. Long day.

Sept.10th Thursday Gay went to Carmacks to pick up more fuel. Walked Kubota up stream to TY6 claim. 08-09 test site. Can get up on the bench. Excavated a ramp to walk excavator up to the bench. Stripped old trees, stumps and slide material mixed with oversize boulders. Exposed bedrock from gravels. (PHOTO7)Gay came and picked me up at 6pm and brought me back to camp.

Sept. 11th Friday Back to 08-09 worked on exposing a large area of bedrock contact with Kubota. Can't do volume test only have 200ft hose. Water is 300ft away to feed the sluice plant. Will be done in the future. Gathered up 20 litre pails for putting through mini rocker box. Gay panned 1 20-litre pail and got colors.

Sept.12th Saturday Stripped pits for defrost 043-09,044-09,045-09 below 08-09 on the creek flats. Gay finished putting tags on post Boots 2,3, 4,5. Took GPS readings of pits on L/Limit.

Sept 13th Sunday Gay hand panned 2 -20 litre pails from 4 miles downstream helicopter trip with Bill Labarge. I drove 4 wheeler down to TC claims and started staking DTR 5 mile prospect lease.

Sept. 14th Monday Gay finished panning out concentrates and finished panning out bottom runs on super sluice test. I finished staking DTR 5 mile prospect lease.

Sept. 15th Tuesday I started walking Kubota excavator out. Got as far as the cross roads. Gay picked me up with 4 wheeler ATV and we drove back to Whitehorse.

Sept. 16th Wednesday Town day.

(21)

Sept. 17th Thursday Gay and I went back to Florence Creek staking Charlie Brown 5 mile prospect lease

Sept. 18th Friday Worked on staking Charlie Brown 5 mile prospect lease.

Sept. 19th Saturday Finished off staking Charlie Brown 5 mile lease . Drove back to Army beach.

Sept. 20th Sunday Gay and I drove back to Rawlinson landing. Took 4 wheeler back to Florence Creek camp.

Sept. 21st Monday Gay drove me to Kubota excavator. Gay went back and worked on taking camp down. She brought me more fuel at the end of the day. I walked excavator out to 4 ½ mile. I worked on road ditching wet spots. Gay and I went back to Carmacks than to Whitehorse to do business.

Sept. 22nd Tuesday Whitehorse Marsh Lake recorded 5 mile leases.

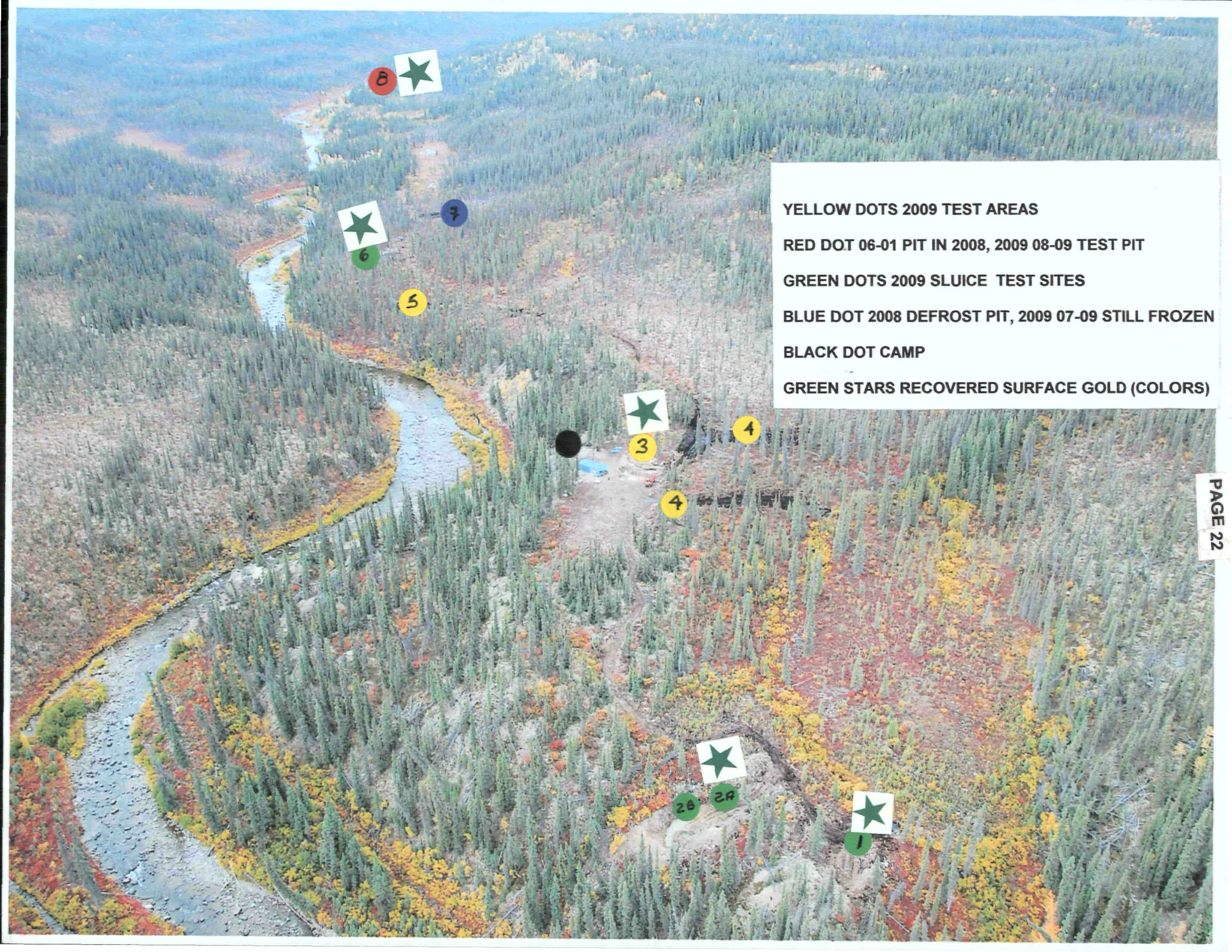
Sept. 23rd Wednesday Gay and I drove back to Florence Creek. She dropped me off at excavator. I finished light ditching at 4 ½ mile. Walked excavator to 10 mile touching up trail. Gay went back to camp and brought me more fuel. Serviced Kubota and we drove 4 wheeler ATV back to camp.

Sept 24th Thursday Gay brought me back to the Kubota excavator at 10 mile. Did some light touch ups on the trail. Did some touch ups at 10 ½ mile. Walked Kubota as far as 15 mile pulling rocks and over blown trees off the trail. Gay picked me up with more fuel. We drove 4 wheeler ATV back to camp.

Sept. 25th I helped Gay finish taking camp down. Took stove out of plastic shack. Closed Camp down. Gay and I drove to 15 mile with 4 wheeler ATV. Trail is in good shape from here to Rawlinson. Covered a few rocks that were sticking out on the trail. Rocks that bent axle on dump trailer. Walked Kubota to Rawlinson creek lay down. Gay drove Ford and I drove Dodge 1 ton pulling 12,000lb trailer back to Army Beach to load up for Dawson City.

Sept. 26th and 27th getting ready for Dawson City Dos Cerros.

Sept. 28th Left Whitehorse solo to Carmacks to pick up Kubota excavator and 4 wheeler ATV. Loaded up Dodge 1 ton and 12,000lb trailer. Than off to Dawson City Dos Cerros.



YELLOW DOTS 2009 TEST AREAS
RED DOT 06-01 PIT IN 2008, 2009 08-09 TEST PIT
GREEN DOTS 2009 SLUICE TEST SITES
BLUE DOT 2008 DEFROST PIT, 2009 07-09 STILL FROZEN
BLACK DOT CAMP
GREEN STARS RECOVERED SURFACE GOLD (COLORS)

YELLOW DOTS 2009 TEST SITES

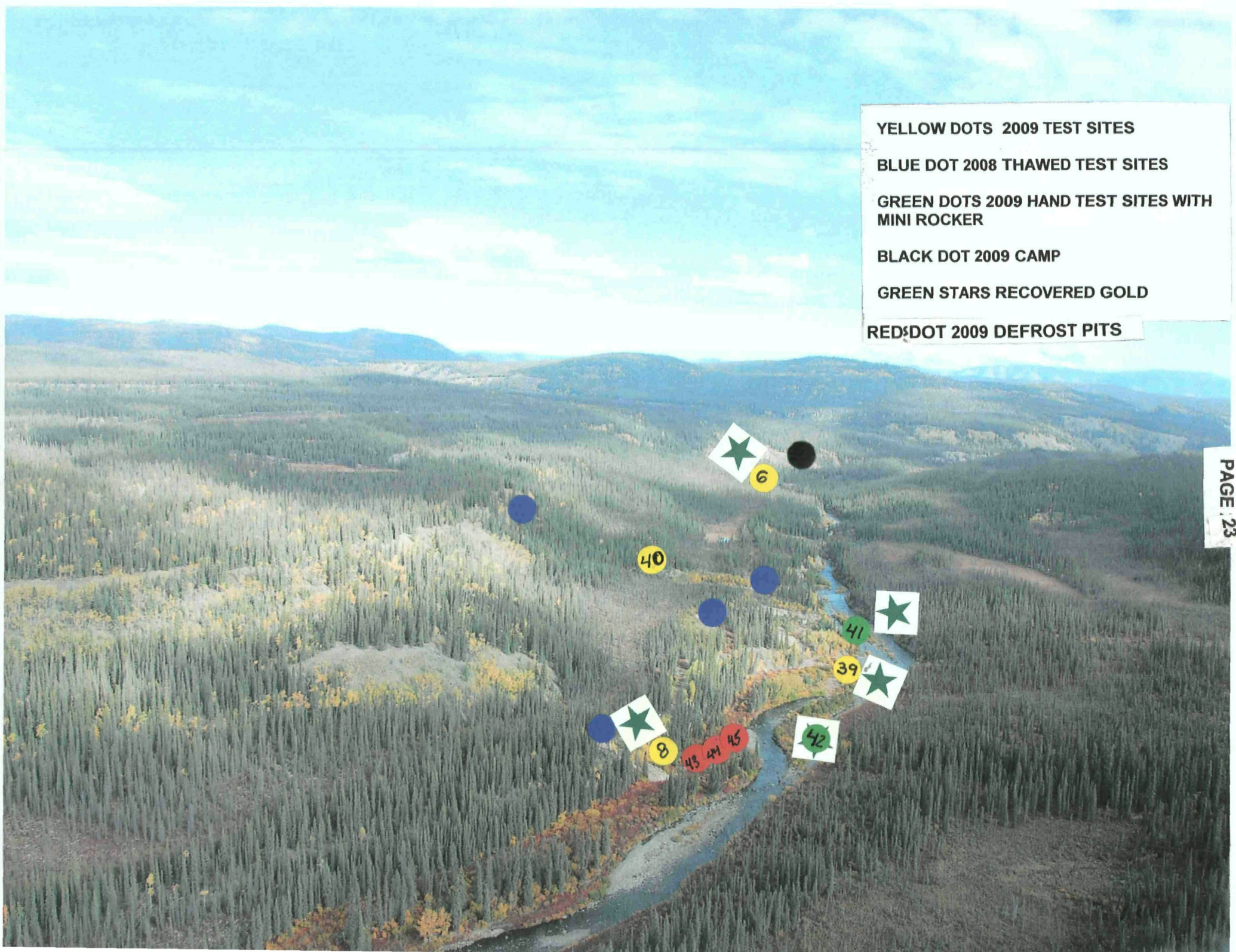
BLUE DOT 2008 THAWED TEST SITES

**GREEN DOTS 2009 HAND TEST SITES WITH
MINI ROCKER**

BLACK DOT 2009 CAMP

GREEN STARS RECOVERED GOLD

RED DOT 2009 DEFROST PITS



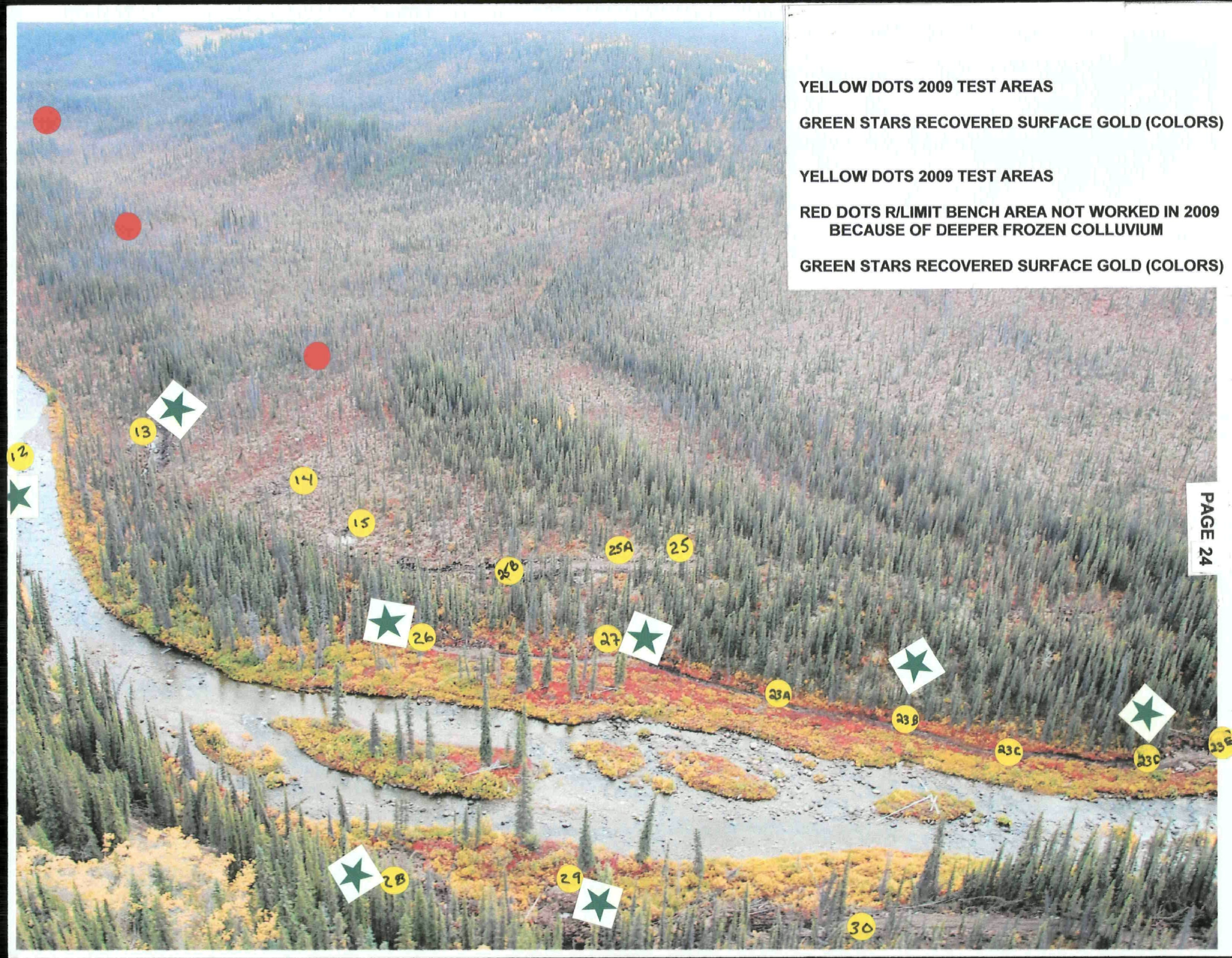
YELLOW DOTS 2009 TEST AREAS

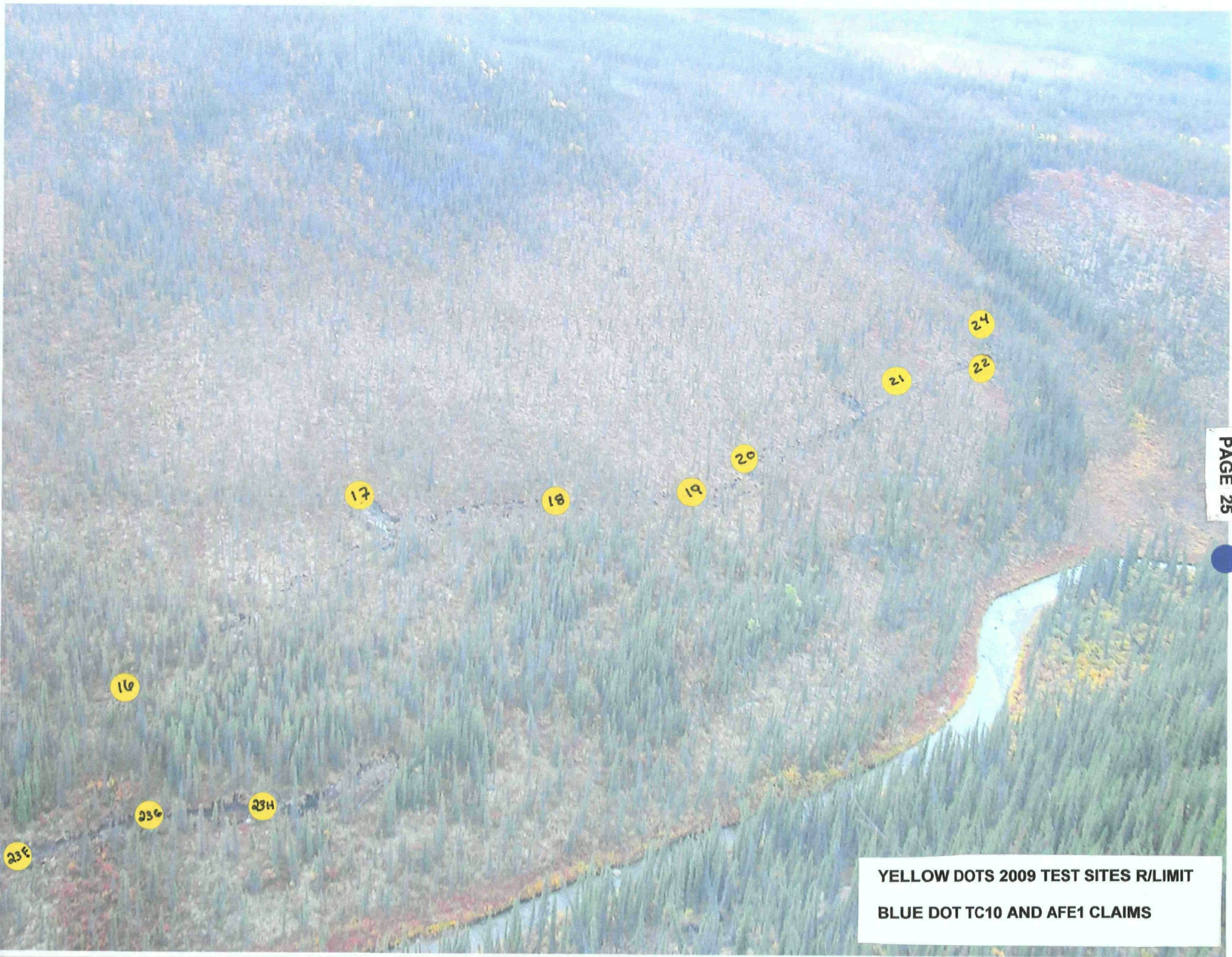
GREEN STARS RECOVERED SURFACE GOLD (COLORS)

YELLOW DOTS 2009 TEST AREAS

RED DOTS R/LIMIT BENCH AREA NOT WORKED IN 2009
BECAUSE OF DEEPER FROZEN COLLUVIUM

GREEN STARS RECOVERED SURFACE GOLD (COLORS)





YELLOW DOTS 2009 TEST SITES R/LIMIT
BLUE DOT TC10 AND AFE1 CLAIMS

23E

23G

23H

10

17

18

19

20

21

22

24

**PROSPECTING
PHOTOS
TARGET EVALUATION
GRANT 09-042
DIAMOND TOOTH RESOURCES
FLORENCE CREEK
2009**



PHOTO 1

TEST PIT 01-09 BOOTS 5 CLAIM



PHOTO 2

TEST PIT 02-09 BOOTS 5 CLAIM



PHOTO 3

BLACK SAND RECOVERED FROM 1 PAN
TEST 02-09



PHOTO 4

SCREENING OVERSIZE DOWN TO 1 1/2 INCH FOR TEST SLICING



PHOTO 5

TEST 06-09 CLOSED CIRCUIT SYSTEM



PHOTO 6

SAMPLING 20 LITER PAILS WITH MINI ROCKER BOX



PHOTO 7

TEST 08-09 GREEN DOTS BEDROCK CONTACT
VOLUME TEST FOR 2010

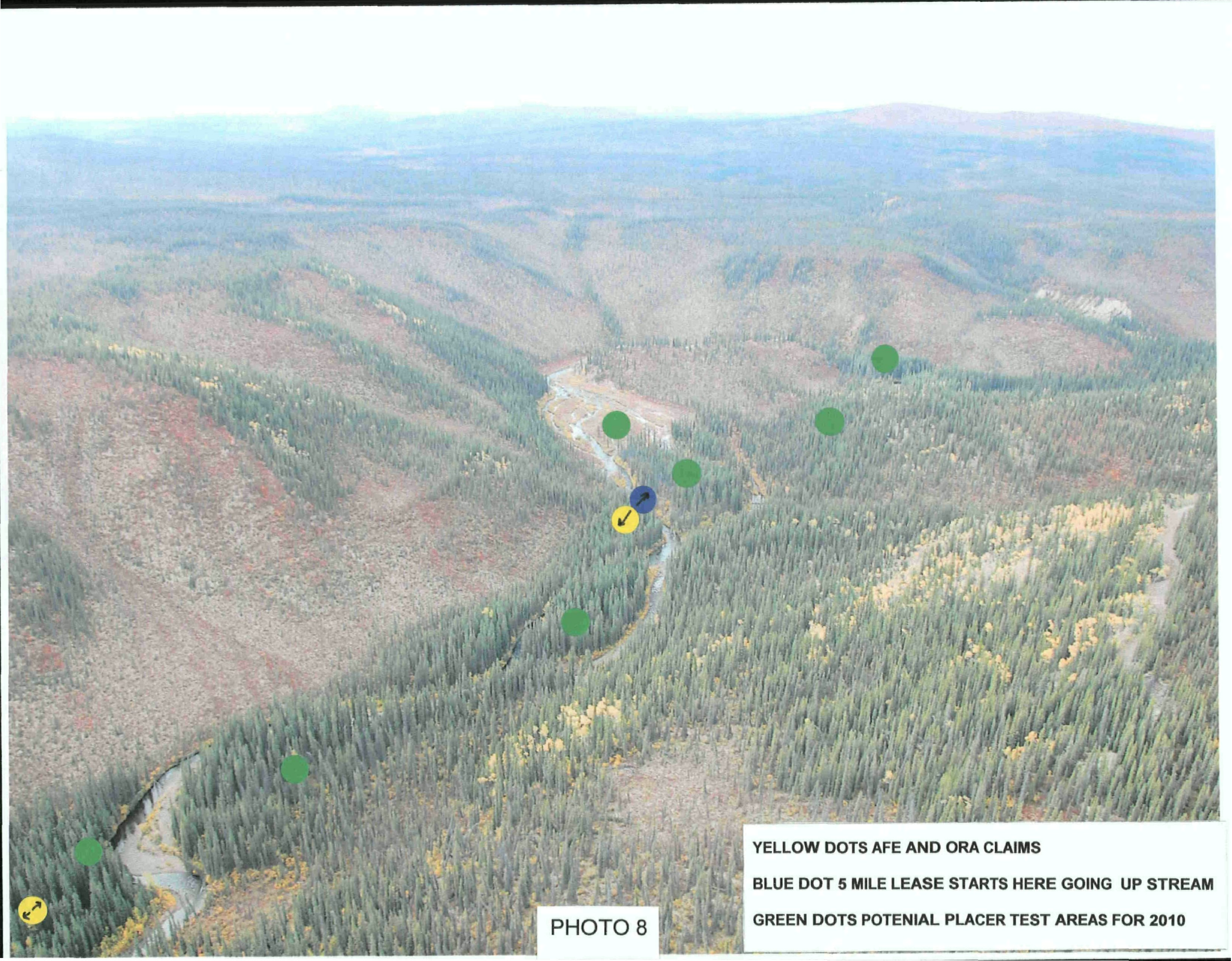


PHOTO 8

YELLOW DOTS AFE AND ORA CLAIMS
BLUE DOT 5 MILE LEASE STARTS HERE GOING UP STREAM
GREEN DOTS POTENTIAL PLACER TEST AREAS FOR 2010



PHOTO 9

**END OF TRAIL L/LIMIT PIT 038-09 ON TC9 CLAIM
LOOKING UPSTREAM LOOKING THROUGH THE TREES
YOU WOULD SEE TC10 AND AFE1-10 CLAIMS.
NOTICE BIG BOULDERS ON SURFACE**



PHOTO 10

END OF THE TRAIL R/LIMIT TC8 024-09 TEST PIT



PHOTO 11

END OF TRAIL R/LIMIT PIT 024-09 ON TC9 CLAIM
LOOKING UPSTREAM OVER TC10 AND AFE 1-10 CLAIMS



PHOTO 12

4 WHEELER ATV PULLING DUMP TRAILER
LOADED WITH 2" PUMP AND SUPER SLUICE
READY FOR NEXT DIG



03

PHOTO 13

03-09 TEST PIT AT CAMP

DEFROST Pit



PHOTO 14

**OVERSIZE GRANODIORITE & ULTRA MAFIC/BASIC BOULDERS
ON SURFACE 023B-09 TEST SITE R/LIMIT TC6 CLAIM**



PHOTO 15

032-09 TEST PIT TRACK CAME OFF IN THE MUD



PHOTO 16

BAGGED SAMPLES FROM 20/LITER PAILS RAN THROUGH MINI ROCKER BOX FLORENCE CREEK 2009



PHOTO 17

RED DOT BUFFALO CREEK

YELLOW DOT THAWED TEST PIT 01-09 ON TRAIL



PHOTO 18

TAILINGS FROM PANNING 4 MILES UPSTREAM ON 5 MILE LEASE

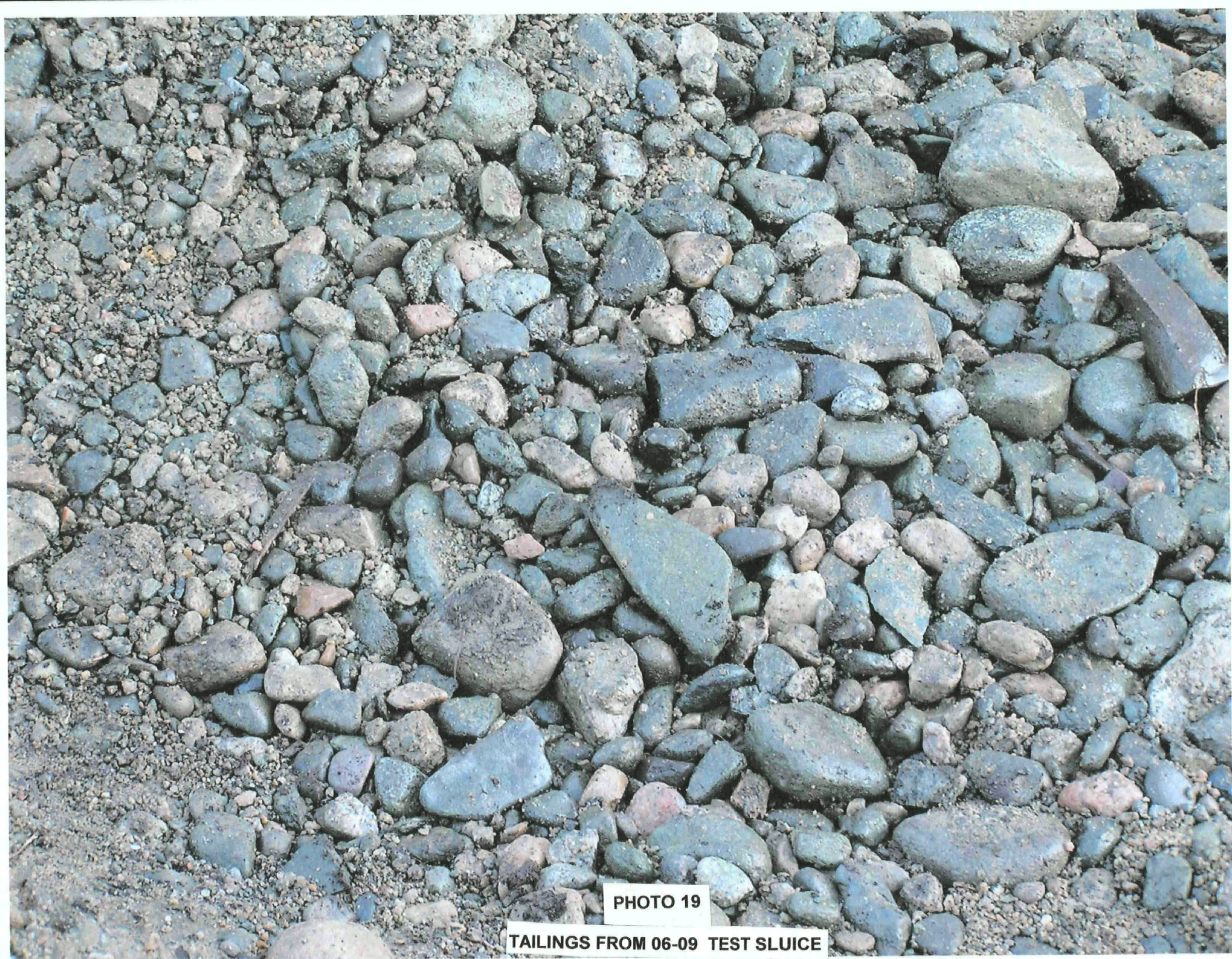


PHOTO 19

TAILINGS FROM 06-09 TEST SLUICE