

**EVALUATION REPORT
on the
NINES CREEK PROJECT**

Nines 31 to 78 (P 50506-P 50557)
Klu 3-6 (YD17350-YD17353)

NTS: 115G/02

Latitude 61° 10' 53" Longitude 138° 42' 11"

Whitehorse Mining District

Work performed between September 25 - 27, 2008
and
August 21 – 31, 2009
September 9, 2009

For
Ralph Keefe
P.O. Box 201
Francois Lake, British Columbia
V0J 1R0

Ken Galambos, P.Eng.
KDG Exploration Services
1535 Westall Ave.
Victoria, British Columbia
V8T 3G6

March 19, 2010

1.0 EXECUTIVE SUMMARY

Initial evaluation of the property in 2008 indicated an area worth further exploration. This included the collection and processing of 4 two-bucket samples from each claim in the lower creek area and two one-bucket samples collected from the lower canyon. Pan concentrate samples were analysed to determine the amount of fine gold contained in the sample after the removal of any visible gold. Free gold was weighed where possible and an estimate of the relative amount of placer magnetite was made for each sample. The largest amount of gold collected during the sampling program weighed 2.6mg from a 2.13m (7') deep pit that did not reach bedrock located on Nines 32. Pan concentrates yielded up to 4.02g/t gold from the Lower Canyon high grade (LC-HG) sample.

Four rock samples including one bedrock sample were collected in 2008 and analysed to determine their gold content. One float sample collected in the Lower Canyon area returned a value of 9.61g/t gold from a piece of massive magnetite containing 2-3% pyrite and traces of chalcopyrite. Twenty-six float and bedrock samples were collected during the 2009 exploration program with the highest result of 1.39g/t gold being returned from a grab sample of bedrock material, possibly an altered andesite.

A Total Magnetic Field survey completed during 2009 revealed magnetic high anomalies both above and below the upper and lower canyon area which could be related to the alluvial environment and may represent concentrations of placer magnetite. Placer gold is often concentrated in the same area due to its high specific gravity. The largest flake of placer gold (16.6mg) collected by the author was from a one bucket sample of mixed gravels located on bedrock approximately 500m below Nines 31. The sample was from the far right limit of the creek, well above the active creek channel.

It is the author's opinion that the work completed on the Nines Creek property registered to Ralph Keefe indicates that it is a placer gold property worthy of further exploration.

Table of Contents

	Page
1.0 Executive Summary	i
2.0 Introduction and Terms of Reference	1
2.1 Qualified Person and Participating Personnel.....	1
2.2 Terms, Definitions and Units.....	1
2.3 Source Documents.....	1
2.4 Limitations, Restrictions and Assumptions.....	2
2.5 Scope.....	2
3.0 Reliance on Other Experts	2
4.0 Property Description and Location	3
4.1 Location and Access.....	3
4.2 Physiography and Climate.....	3
4.3 Land Tenure.....	3
5.0 History	5
6.0 Geological Setting	6
6.1 Regional Geology.....	6
6.2 Property Geology.....	7
7.0 Deposit Models	8
7.1 Gulch Placers.....	8
7.2 Glacial Placers.....	8
7.3 Volcanic Massive Sulphide deposits.....	8
8.0 Mineralization	9
9.0 Previous Exploration	9
9.1 Placer Sampling Method and Approach.....	10
9.2 Sample Preparation, Analysis and Security.....	11
9.3 Sample Results.....	11
10.0 Drilling	12
11.0 Current Exploration Program	12
11.1 Geophysical Survey Method and Approach.....	12
11.2 Geophysical Results.....	12
11.3 Prospecting Survey Method and Approach.....	13
11.4 Prospecting Survey Results.....	13
12.0 Data Verification	15
13.0 Adjacent Properties	15
13.1 Klu property.....	15
13.2 Fry Pan Creek.....	16
13.3 Burwash Creek.....	16
14.0 Mineral Processing and Metallurgical Testing	17
15.0 Resource and Mineral Reserve Estimates	17
16.0 Interpretation and Conclusions	17
17.0 Recommendations and Budget	17
18.0 References	18
19.0 Certification, Date and Signature	20

	Page
20.0 Appendices	21
Appendix A - Weight of Recovered Gold	
Appendix B - Assay Results of Sample Concentrates	
Appendix C - Total Magnetic Field Survey on Placer Prospecting Lease IW00266 Nines Creek, Yukon	
Appendix D - Assay Results of Prospecting Samples	

List of Illustrations

Figure 1 Property Location map.....	3
Figure 2 Regional Geology map.....	6
Figure 3 Sample Location map.....	14
Figure 4 Adjacent Properties.....	15
Figure 5 Adjacent Placer Properties.....	16

List of Tables

Table 1 Claim Data.....	4
-------------------------	---

List of Photographs

Access road.....	3
Historic placer claim tag.....	5
Panning at mouth of canyon.....	10
Excavator used in sampling program.....	10
Sampling test pit material.....	10
Processing of bulk sample.....	11
Panning of concentrate sample.....	11
Placer gold flakes recovered.....	11

2.0 INTRODUCTION AND TERMS OF REFERENCE

2.1 Qualified Person and Participating Personnel

Mr. Kenneth D. Galambos, P.Eng. was commissioned by Ralph Keefe of Francois Lake, British Columbia to examine and evaluate the traditional placer gold potential and the gold content contained in the magnetite and other heavy minerals present in the creek gravels on the Nines Creek Project and to make recommendations for the next phase of exploration work in order to test the economic potential of the property.

This report describes the property in accordance with the guidelines specified in National Instrument 43-101 and is based on historical information and an examination and evaluation of the property by the author from September 25 to 27, 2008. The author was assisted in the field by Mr. Ralph Keefe of Francois Lake, British Columbia. Subsequent programs conducted during the summer of 2009 entailed the services of Bob Sterling, an independent geophysical contractor and Ralph Keefe to complete a magnetic survey planned by the author. This was followed by a small prospecting program by Mr. Keefe to evaluate the hard rock potential of the area.

2.2 Terms, Definitions and Units

- All costs contained in this report are denominated in Canadian dollars.
- Distances are primarily reported in metres (m) and kilometers (km) and in feet (ft) when reporting historical data.
- Volumes are expressed as bank cubic yards (bcy) which is the in-situ volume and loose cubic yards (lcy), the disturbed volume of material that is typically sampled.
- GPS refers to global positioning system.
- Minfile showing refers to documented mineral occurrences on file with the Yukon Geological Survey.
- The term ppm refers to parts per million, equivalent to grams per metric tonne (g/t).
- ppb refers to parts per billion.
- The abbreviation oz/t refers to troy ounces per imperial short ton.
- The symbol % refers to weight percent unless otherwise stated. 1% is equivalent to 10,000ppm.
- Elemental and mineral abbreviations used in this report include: gold (Au), pyrite (Py) and chalcopyrite (Cpy).

2.3 Source Documents

Sources of information are detailed below and include the available public domain information and private company data.

- Research of the Minfile data available for the area at <http://www.geology.gov.yk.ca/>
- Research of mineral titles at <http://www.yukonminingrecorder.ca/>

- Review of company reports and annual assessment reports filed with the government at <http://emr.gov.yk.ca/library/>
- Review of geological maps and reports completed by the Yukon Geological Survey or its predecessors.
- Published scientific papers on the geology and mineral deposits of the region and on mineral deposit types.
- The author has previous independent experience and knowledge of the regional area having worked on the Frypan Creek property now registered to 41783 Yukon Inc. and having conducted regional exploration throughout the belt for Hudson Bay Exploration and Development Ltd. and Noranda Exploration Ltd. NPL.
- Work on the property by the author from September 25 to 27, 2008 and by Keefe and Sterling, August 22 to 28, 2009.

2.4 Limitations, Restrictions and Assumptions

The author has assumed that the previous documented work in the area of the property is valid and has not encountered any information to discredit such work.

2.5 Scope

This report describes the current exploration programs, geology, previous exploration history and mineral potential of the Nines Creek Project. Research included a review of the historical work that related to the immediate and surrounding area of the property. Regional geological data and current exploration information have been reviewed to determine the geological setting of the mineralization and to obtain an indication of the level of industry activity in the area. The property was examined and originally evaluated by the author in late September, 2008 after the staking of the 5 mile placer lease by Mr. Keefe. Work consisted of limited geological mapping, rock and geochemical sampling of the heavy minerals in the creek. Following up on this initial visit, the owner of the property conducted geophysical surveys in 2009 and converted the 5 mile lease to claims and staked four quartz claims. Once the claims were accepted at the Whitehorse Mining Recorder's office, Mr. Keefe returned to the area to stake an additional 2 mile lease on the south fork of Nines Creek, prospect and sample the newly established claims.

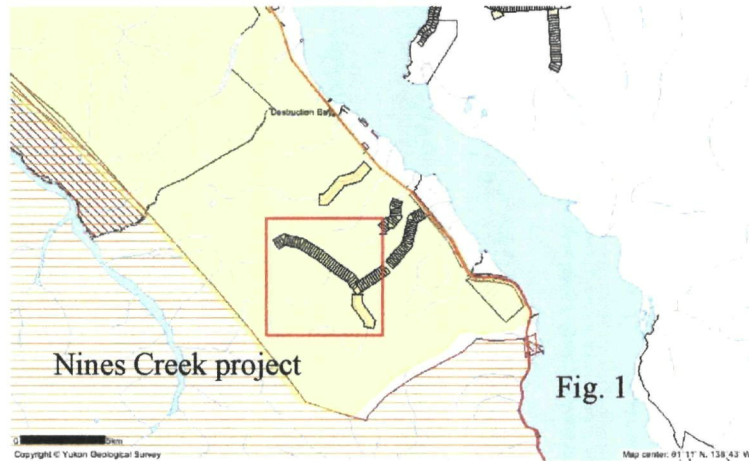
3.0 RELIANCE ON OTHER EXPERTS

Some data referenced in the preparation of this report was compiled by geologists employed by the Yukon Geological Survey including its predecessor and the Geological Survey of Canada, both prior to and after the inception of National Instrument 43-101. These individuals would be classified as "qualified persons" today, although that designation may not have existed when some of the historic work was done. The author assumes no responsibility for the interpretations and inferences made by these individuals prior to the inception of the "qualified person" designation.

4.0 PROPERTY DESCRIPTION AND LOCATION

4.1 Location and Access

The Nines Creek project area lies on the south side of Kluane Lake in the Kluane Game Sanctuary. The centre of the area lies approximately 25 km SE of the community of Burwash Landing, Yukon on mapsheets 115G02 and 115G07. The property is accessed through a Government gravel pit with a two-wheel drive trail at a point approximately 8km southeast of the community of Destruction Bay, Yukon. The claims lie in the Whitehorse Mining District and are administered out of Whitehorse, Yukon.



2wd access road into the project area



4.2 Physiography and Vegetation

Nines Creek lies within the St. Elias Mountains in south western Yukon. The majority of the property has a moderate grade while the property is confined to a fairly tight creek channel. The creek channel is essentially barren with low scrub encroaching into the creek banks. Below the property and once the creek has exited the front ranges, it has deposited significant quantities of gravel in a large alluvial fan deposit. The width of the fan where it exits the gulch is roughly 80m and from air photo interpretation the fan reaches a width in excess of 3km on the shores of Kluane Lake a distance in excess of 5km. Much of this area is barren with only scattered clumps of low shrubs and isolated trees. In areas of heavier vegetation, spruce and cottonwood predominated with alder and willow common in the wetter areas.

4.3 Land Tenure

The Nines Creek claim group consists of fifty-two contiguous placer claims, a 2-mile Placer Prospecting Lease and four quartz claims located in the Whitehorse Mining District. The claims were staked by Ralph Keefe.

Table 1: Claim Data

ClaimName	Claim#	GrantNumber	Claim Owner	RecordingDate	ExpiryDate
NINES	31	P 50506	Ralph Keefe - 100%.	9/1/2009	9/1/2010
NINES	32	P 50507	Ralph Keefe - 100%.	9/1/2009	9/1/2010
NINES	33	P 50508	Ralph Keefe - 100%.	9/1/2009	9/1/2010
NINES	34	P 50509	Ralph Keefe - 100%.	9/1/2009	9/1/2010
NINES	35	P 50510	Ralph Keefe - 100%.	9/1/2009	9/1/2010
NINES	36	P 50511	Ralph Keefe - 100%.	9/1/2009	9/1/2010
NINES 36A		P 50512	Ralph Keefe - 100%.	9/1/2009	9/1/2010
NINES 36B		P 50513	Ralph Keefe - 100%.	9/1/2009	9/1/2010
NINES 36C		P 50514	Ralph Keefe - 100%.	9/1/2009	9/1/2010
NINES 36D		P 50515	Ralph Keefe - 100%.	9/1/2009	9/1/2010
NINES	37	P 50516	Ralph Keefe - 100%.	9/1/2009	9/1/2010
NINES	38	P 50517	Ralph Keefe - 100%.	9/1/2009	9/1/2010
NINES	39	P 50518	Ralph Keefe - 100%.	9/1/2009	9/1/2010
NINES	40	P 50519	Ralph Keefe - 100%.	9/1/2009	9/1/2010
NINES	41	P 50520	Ralph Keefe - 100%.	9/1/2009	9/1/2010
NINES	42	P 50521	Ralph Keefe - 100%.	9/1/2009	9/1/2010
NINES	43	P 50522	Ralph Keefe - 100%.	9/1/2009	9/1/2010
NINES	44	P 50523	Ralph Keefe - 100%.	9/1/2009	9/1/2010
NINES	45	P 50524	Ralph Keefe - 100%.	9/1/2009	9/1/2010
NINES	46	P 50525	Ralph Keefe - 100%.	9/1/2009	9/1/2010
NINES	47	P 50526	Ralph Keefe - 100%.	9/1/2009	9/1/2010
NINES	48	P 50527	Ralph Keefe - 100%.	9/1/2009	9/1/2010
NINES	49	P 50528	Ralph Keefe - 100%.	9/1/2009	9/1/2010
NINES	50	P 50529	Ralph Keefe - 100%.	9/1/2009	9/1/2010
NINES	51	P 50530	Ralph Keefe - 100%.	9/1/2009	9/1/2010
NINES	52	P 50531	Ralph Keefe - 100%.	9/1/2009	9/1/2010
NINES	53	P 50532	Ralph Keefe - 100%.	9/1/2009	9/1/2010
NINES	54	P 50533	Ralph Keefe - 100%.	9/1/2009	9/1/2010
NINES	55	P 50534	Ralph Keefe - 100%.	9/1/2009	9/1/2010
NINES	56	P 50535	Ralph Keefe - 100%.	9/1/2009	9/1/2010
NINES	57	P 50536	Ralph Keefe - 100%.	9/1/2009	9/1/2010
NINES	58	P 50537	Ralph Keefe - 100%.	9/1/2009	9/1/2010
NINES	59	P 50538	Ralph Keefe - 100%.	9/1/2009	9/1/2010
NINES	60	P 50539	Ralph Keefe - 100%.	9/1/2009	9/1/2010
NINES	61	P 50540	Ralph Keefe - 100%.	9/1/2009	9/1/2010
NINES	62	P 50541	Ralph Keefe - 100%.	9/1/2009	9/1/2010
NINES	63	P 50542	Ralph Keefe - 100%.	9/1/2009	9/1/2010
NINES	64	P 50543	Ralph Keefe - 100%.	9/1/2009	9/1/2010
NINES	65	P 50544	Ralph Keefe - 100%.	9/1/2009	9/1/2010
NINES	66	P 50545	Ralph Keefe - 100%.	9/1/2009	9/1/2010
NINES	67	P 50546	Ralph Keefe - 100%.	9/1/2009	9/1/2010
NINES	68	P 50547	Ralph Keefe - 100%.	9/1/2009	9/1/2010
NINES	69	P 50548	Ralph Keefe - 100%.	9/1/2009	9/1/2010
NINES	70	P 50549	Ralph Keefe - 100%.	9/1/2009	9/1/2010
NINES	71	P 50550	Ralph Keefe - 100%.	9/1/2009	9/1/2010
NINES	72	P 50551	Ralph Keefe - 100%.	9/1/2009	9/1/2010
NINES	73	P 50552	Ralph Keefe - 100%.	9/1/2009	9/1/2010
NINES	74	P 50553	Ralph Keefe - 100%.	9/1/2009	9/1/2010

NINES	75	P 50554	Ralph Keefe - 100%.	9/1/2009	9/1/2010
NINES	76	P 50555	Ralph Keefe - 100%.	9/1/2009	9/1/2010
NINES	77	P 50556	Ralph Keefe - 100%.	9/1/2009	9/1/2010
NINES	78	P 50557	Ralph Keefe - 100%.	9/1/2009	9/1/2010
		IW00285	Ralph Keefe - 100%.	9/10/2009	9/10/2010
Klu	3	YD17350	Ralph Keefe - 100%.	9/1/2009	9/1/2010
Klu	4	YD17351	Ralph Keefe - 100%.	9/1/2009	9/1/2010
Klu	5	YD17352	Ralph Keefe - 100%.	9/1/2009	9/1/2010
Klu	6	YD17353	Ralph Keefe - 100%.	9/1/2009	9/1/2010

5.0 HISTORY

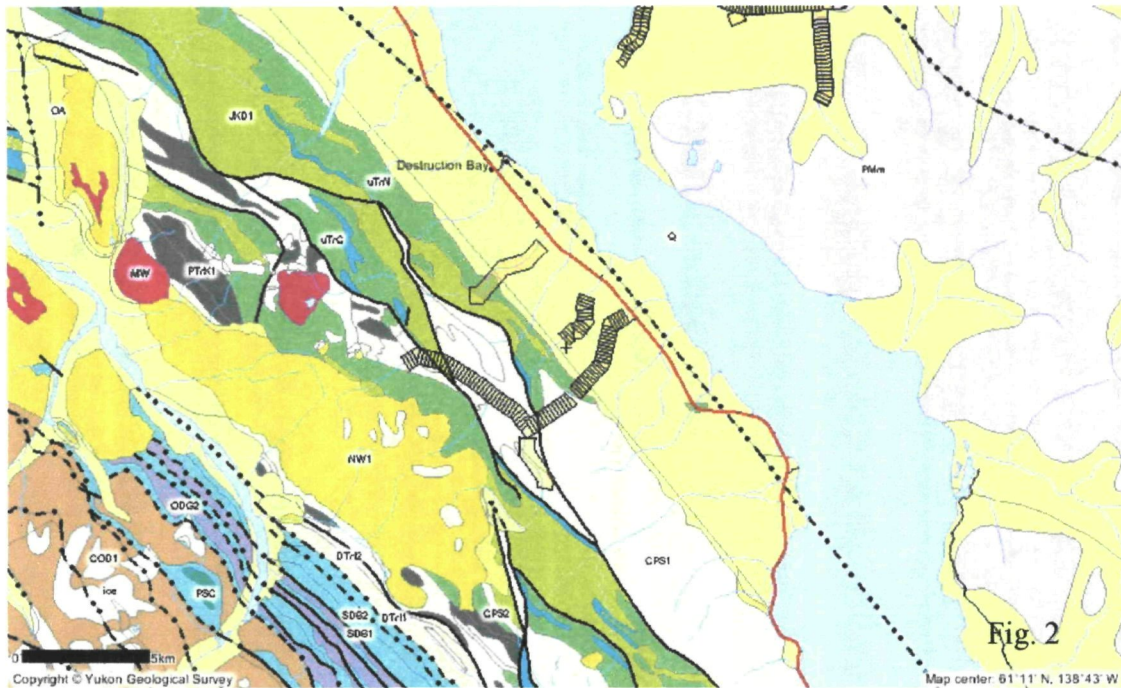
Only limited exploration has been completed on Nines Creek prior to 2008. The area was initially withdrawn from staking during the time leading up to the creation of Kluane National Park in 1972 and again prior to the settlement of the Kluane First Nations Final Agreement on October 18, 2003. The area was open for development for a brief time during the late 1980s as evidenced by old



claim posts near the lower canyon on Nines Creek. Claim tags revealed the creek had been staked by William M. Blahitka and recorded as Frija with tenure # P 27510 on August 26, 1988. The claim expired the following year without any work being filed for assessment. The alluvial fan on Nines Creek had also been tested by a local Destruction Bay equipment operator at one point as well, with only a few colors being recovered. (pers com). The surface gravels of the lower Nines Creek alluvial fan target was also systematically evaluated in September of 2008 by Nines Creek Gold Corp.

6.0 GEOLOGICAL SETTING

6.1 Regional Geology



The bedrock geology in the area is as follows:

NW1: WRANGELL LAVAS

rusty red-brown, phytic and non-phyric basaltic andesite flows (minor pillow lava), interbedded with felsic tuff, volcanic sandstone and conglomerate; acid pyroclastics related to intra-Wrangell intrusions; thin basaltic andesite and andesite flows (**Wrangell Lavas**)

MW: WRANGELL SUITE

fine to medium grained, hornblende +/- biotite granodiorite and porphyritic (K-feldspar) hornblende granodiorite; medium grained, uniform biotite diorite and pyroxene gabbro; subvolcanic hornblende +/- biotite rhyolite, rhyodacite, dacite, and trachyte (**Wrangell Suite**)

CPS1: SKOLAI

volcanics succeeded upward by clastic strata, tuff, breccia, argillite, agglomerate, augite-phyric basaltic to andesitic flows (Station Cr. Fm); succeeded by thin-bedded argillite, siltstone, minor greywacke and conglomerate and local thin basaltic flows, breccia and tuff (Hasen Cr. Fm) (**Skolai Gp., Station Creek and Hasen Creek**)

JKD1: DEZADEASH

interbedded light to dark buff-grey lithic greywacke, sandstone, siltstone, thin dark grey shale, argillite, phyllite and conglomerate; rare tuff
(Dezadeash)

uTrC: CHITISTONE

thin interbedded light to dark grey argillaceous limestone and dark grey argillite; massive light grey limestone, limestone breccia and darker grey, well-bedded limestone; white to creamy-white gypsum and anhydrite
(McCarthy, Chitistone and Nizina limestones)

uTrN: NICOLAI

amygdaloidal basaltic and andesitic flows, with local tuff, breccia, shale and thin-bedded bioclastic limestone; volcanic breccia, pillow lava and conglomerate at base; locally includes dark grey phyllite and minor thin grey limestone of Middle Triassic **(Nicolai Greenstone)**

PTrK1: KLUANE ULTRAMAFIC SUITE

medium grey-green, massive, medium grained, pyroxene gabbro and greenstone sills; sheeny black peridotite, rare dunite **(Kluane-type Mafic-Ultramafics; Squaw Datasaka Ranges Gabbro-Diabase Sills)**

6.2 Property Geology

The placer claims comprising the Nines Creek property overlie only a few of the regionally present units but the alluvial deposits are composed of a mix of most of the rocks in the area including a few erratic boulders of granitic composition. Rocks that have been mapped in the immediate area include:

CPS1: SKOLAI

volcanics succeeded upward by clastic strata, tuff, breccia, argillite, agglomerate, augite-phyric basaltic to andesitic flows (Station Cr. Fm); succeeded by thin-bedded argillite, siltstone, minor greywacke and conglomerate and local thin basaltic flows, breccia and tuff (Hasen Cr. Fm) **(Skolai Gp., Station Creek and Hasen Creek)**

JKD1: DEZADEASH

interbedded light to dark buff-grey lithic greywacke, sandstone, siltstone, thin dark grey shale, argillite, phyllite and conglomerate; rare tuff
(Dezadeash)

uTrN: NICOLAI

amygdaloidal basaltic and andesitic flows, with local tuff, breccia, shale and thin-bedded bioclastic limestone; volcanic breccia, pillow lava and conglomerate at base; locally includes dark grey phyllite and minor thin grey limestone of Middle Triassic **(Nicolai Greenstone)**

7.0 DEPOSIT TYPES

7.1 Gulch Placers

Gulch placers are very high energy lag systems that exist in confined drainages. As with all lag deposits, they are poorly sorted and contain angular to sub-rounded particles ranging from silt to boulder in size. Boulder clusters exist within the drainage and protect poorly sorted material which acts like natural riffles that collect gold particles. The deposits can be quite rich, but may be spotty with localized concentrations of gold. Pay zones are typically narrow and range from a few inches to several feet and are normally located at or near bedrock or false bedrock within the sediment package. The source for the gold particles is quite close and the deposit forms more from the removal of lighter material than the lengthy transportation of the heavy minerals. Gold particles in a pure gulch placer will exhibit little rounding or folding and tend to be crystalline, flat, wire or shot like as found in the lode source.

7.2 Glacial Placers

Glacial movement tends to smear any existing placer or lode deposits in a down ice direction and generally results in poorly sorted moraine containing abundant clay or rock flour. The glacial deposits rarely concentrate any heavy minerals and can often bury existing gulch placers beneath barren sediments. Placer deposits that form from gold bearing glacial sediments are typically gulch and alluvial deposits that have formed from the reworking of these glacial sediments.

7.3 Volcanic Massive Sulphide Deposits

The primary model suggested by Steve Israel of the Yukon Geological Survey for the mineralization found on the Nines Creek property is that of a volcanic massive sulphide deposit. Examples in similar settings would include the Besshi deposits in Japan, Windy Craggy located in British Columbia and Greens Creek deposit in Alaska. Noranda/Kuroko type VMS deposits found in similar terranes include Tulsequah Chief, Kutcho Creek and Myra Falls in British Columbia.

Israel has noted VMS style mineralization in the Lower Station Creek formation volcanic rocks which have returned a 320 Ma age which coincides with VMS mineralization that has recently been found in the upper portion of the Sicker Arc on Vancouver Island. Massive magnetite deposits and magnetite-bearing jasper form as exhalative lenses up to a metre thick and several tens of metres in strike length elsewhere in the Station Creek basalts.

The Besshi type deposits generally form as thin sheets of massive to well layered iron sulphides (pyrrhotite and or pyrite) with chalcopyrite, sphalerite and minor galena interlayered terrigenous clastic rocks and calcalkaline mafic to intermediate tuffs and flows. The deposits generally form in extensional environments such as back-arc basins, rift basins in the early stages of continental separation and oceanic ridges proximal to continental margins. Deposits are generally a few metres thick and up several kilometers in strike

length and down dip though they can occur as stacked lenses. Primary mineralization generally consists of pyrite, pyrrhotite, chalcopyrite, sphalerite, cobaltite, magnetite, galena, bornite, tetrahedrite, cubanite, stannite, molybdenite, arsenopyrite and marcasite. As such, copper, gold, silver, zinc and lead are the main commodities found in Besshi type deposits although the relative amounts of each mineral may vary widely. Alteration generally consists of quartz, chlorite, calcite, siderite, ankerite, pyrite, sericite and graphite.

The grade and tonnage potential for these types of deposits varies considerably from an average of 0.22Mt, containing 1.5% Cu, 2-9g/t Ag and 0.4-2% Zn for the type-locality Besshi deposits to the very large Windy Craggy deposit which has reserves of more that 113.0 Mt containing 1.9% Cu, 3.9 g/t Ag and 0.08% Co. (Cox and Singer, 1986).

Associated deposit types are generally confined to Cu and Zn veins.

8.0 MINERALIZATION

Discussion of mineralization on the property is confined to placer and "hard rock" gold. There has been no attempt made to determine the purity of the placer gold collected to date. Geochemical and fire assay techniques used in determining gold content of float and bedrock samples is a true representation of the contained metal. Nines Creek is shown to contain grains of placer gold in as yet undetermined concentrations. The recovered gold from the property ranges in size from very small flakes up to 2.6mg in size. The largest flake recovered on the creek to date weighed 16.6mg and was collected by the author from a one bucket sample of mixed gravels located on bedrock approximately 500m below Nines 31.

9.0 PREVIOUS EXPLORATION

Only limited exploration has been completed on Nines Creek prior to 2008. The area was open for development for a brief time during the late 1980s as evidenced by old claim posts near the lower canyon on Nines Creek. Claim tags revealed the creek had been staked by William M. Blahitka and recorded as Frija with tenure # P 27510 on August 26, 1988. The claim expired the following year without any work being filed for assessment. The alluvial fan on Nines Creek had also been tested by a local Destruction Bay equipment operator at one point as well, with only a few colors being recovered. (pers com). The surface gravels of the lower Nines Creek alluvial fan target was also systematically evaluated in September of 2008 by Nines Creek Gold Corp.

In September, 2008 the Nines Creek property owned by Ralph Keefe was evaluated using a backhoe test pitting program of the creek gravels.

9.1 Placer Sampling Method and Approach

Sampling of potentially gold bearing placer gravels in 2008 remained consistent throughout the exploration program with the exception of samples collected in the lower canyon area. Here, two one-bucket samples were collected and panned on site to eliminate the transportation of the larger sample over rough ground by foot to the ATV located approximately 100m distance.



All other test sites were dug with a small excavator. At each test site, the operator was instructed to deposit a representative, top to bottom, section of gravel to be further processed by the author. A two bucket, 0.053 loose cubic yard (lcy) screened sample, was then collected from this material. Material collected for processing passed through an expanded metal screen with an opening size of 1.6 x 3.8cm (5/8" x 1 1/2"). Oversize was

separated into cobble and boulder fractions and estimates were made as to the % of each fraction present.

Photographs were taken of each test hole to record the relative size of each hole, the gravels present and any unique features such as tree trunks or peat moss present in the test pit.

Photographs were also taken of the distribution of gravel/cobble/boulder present at each site. The weight of each sample averaged 77.339kg (170.5 lbs). Each two bucket sample was then transported by an all terrain



vehicle (ATV) to the processing trailer for further concentration. Sluice concentrates were then further concentrated by panning and larger gold grains removed for weighing.

Test pits were filled in prior to the end of the program and the area returned to as close to its natural condition as possible.

9.2 Sample Preparation, Analysis and Security

A processing site was set up on claim Nines 21 where water was available for a small sluice box which was used to concentrate each sample. The sluice was set at an industry standard slope of 1½" of drop per foot of run to collect the majority of the heavy minerals present. After each sample was shoveled through the sluice, the matting and screens were totally dismantled from the box, washed to remove the concentrate and then reinstalled. The concentrate was then



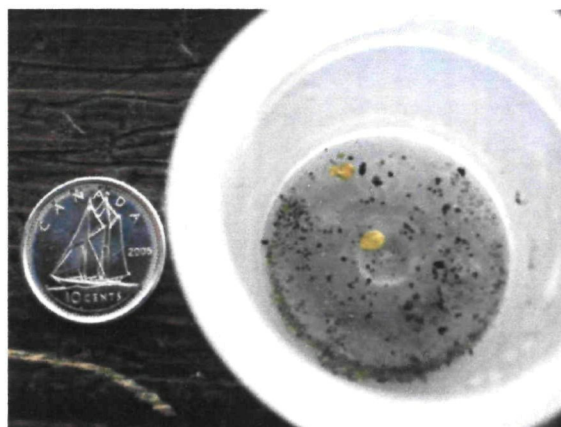
collected in a heavy-weight plastic sample bag. Each sample was double labeled with a small piece of flagging tape inside each bag and with a permanent marker on the outside of the sample bag. The sample was then double bagged to ensure there was no loss of material in case of accidental breakage of the first. The average weight of concentrate collected from each sample was 5.44kg (12 lbs).

After initial concentration of the Nines Creek samples, concentrates were transported to a secure facility and further concentrated to a weight of approximately 100g using a gold wheel and final panning of the heavy minerals. Any recoverable gold was removed at this time and placed into individual 1 dram glass vials which were then labeled with permanent marker as to their respective sample number. These physical gold samples were delivered to Research Consulting Center, a subsidiary of M Quest Capital Corp. for weighing and further testing. The concentrates were transported to Acme Analytical Laboratories, an independent company, and submitted for P200 preparation (Dry at 60°C and pulverize only to 85% passing 200 mesh) and G6 analysis (fire assay for gold using 30g sample).



9.3 Sample Results

Sampling of the Nines Creek gravels resulted in visible gold being present in 5 of 6 samples collected. Of the samples with recoverable gold, only 2 of the samples had weighable gold.



The weight of the largest flakes recovered was 2.6mg from sample N32.1. The weights of the recovered gold are reported in Appendix A. Assaying of the sample concentrates returned values as high as 4.02g/t gold. Assay results of the sample concentrates are reported in Appendix B.

10.0 DRILLING

No drilling has been performed on the property.

11.0 CURRENT EXPLORATION

The 2009 evaluation program consisted of the establishment of a picketed grid over the lower half of the Nines Creek property to facilitate the collection of magnetic survey data in an attempt to locate concentrations of alluvial magnetite. Placer gold is often associated with magnetite and other minerals of high specific gravity. Locating any magnetic high anomalies in the alluvial environment would focus any further evaluation surveys and test pitting contemplated for the property.

A short prospecting program was also completed in the canyon area on September 9, 2009.

11.1 Geophysical Survey Method and Approach

A picketed baseline was established as control for the magnetic survey. Ends of cross lines were marked with pickets and flagging tape. Readings were collected every 5m on lines spaced 20m apart over the creek bed. Two areas were surveyed in detail both above and below a series of canyons located on the creek. The canyon area could not be grid surveyed and was evaluated with a single profile line the length of the lower canyon. Readings were taken every 5m. A GEM Systems GSM 19T proton magnetometer was used for the base station with readings taken every 3 seconds. The mobile unit consisted of a GEM Systems GSM 19 TW proton magnetometer. Mobile stations were read in immediate mode with interpolation. Details on the survey methods are reported in Appendix C.

11.2 Geophysical Results

A number of anomalies were located during the survey which may indicate alluvial magnetite and possible locations where placer gold may accumulate. The profile line through the canyon identified an area of high magnetism which is likely related to bedrock. Layers of massive magnetite and hematite cross the creek and may be the source for some of the magnetite present in the creek gravels.

Anomaly A

A magnetic high anomaly was found above the canyon on lines 61 to 85. Bedrock was not observed in this area. The left and right limit valley slopes consist of alluvial till and/or glacial outwash and slide rock. Anomaly A may be related to the alluvial environment as the width of the active channel decreases

considerably causing the water velocity to slow before entering the canyon. Government geologists have mapped a fault crossing the creek in the area of the magnetic anomaly and it has been suggested that the fault may be the source of the magnetic anomaly. Geophysical maps do not show any magnetic high features at this location and a second theory is that the faulted bedrock has acted as natural riffles and concentrated the magnetite and other heavy minerals at this location. The trend of the magnetic anomaly suggests that it heads southwest and eventually under the till covered bank, possibly preserving any accumulation of heavy minerals present.

Anomaly B

A moderate to high magnetic anomaly was found below the canyon on lines 1 to 9 and 10 to 15. Bedrock outcroppings were not seen in this area. The anomaly on the far right limit is likely related to slide rock or sub-crop as the grid was extended upslope from the edge of the active creek. The anomaly on the mid to left limit may be related to the alluvial environment. Water slows in this area as the extents of the creek valley widen.

A small bench may be present on the right limit lines 1-2 and is coincident with the magnetic high anomaly. A full report on the Nines Creek geophysical surveys are reported in Appendix C.

11.3 Prospecting Survey Method and Approach

Each side of Nines Creek was inspected for obvious mineralization. Special attention was paid to the vicinity of the massive magnetite/hematite showing that was discovered in 2008. Representative samples of bedrock were taken regardless of mineralization being present in order to test for blind gold mineralization. The sample locations were noted in regards to known locations as GPS signal was spotty in most of the canyon area. Locations were later plotted on

11.4 Prospecting Results

Twenty-six grab samples of float and bedrock material were collected during the program to obtain a representative selection of rock types, to determine if mineralization found in the canyon area may be contributing to the placer gold found in the creek and to locate a possibly economic hard rock source. One sample of altered andesite (?) containing minor sulphides returned an assay of 1.39g/t Au. A complete listing of the ICP analysis is reported in Appendix D.

Sample Location Map

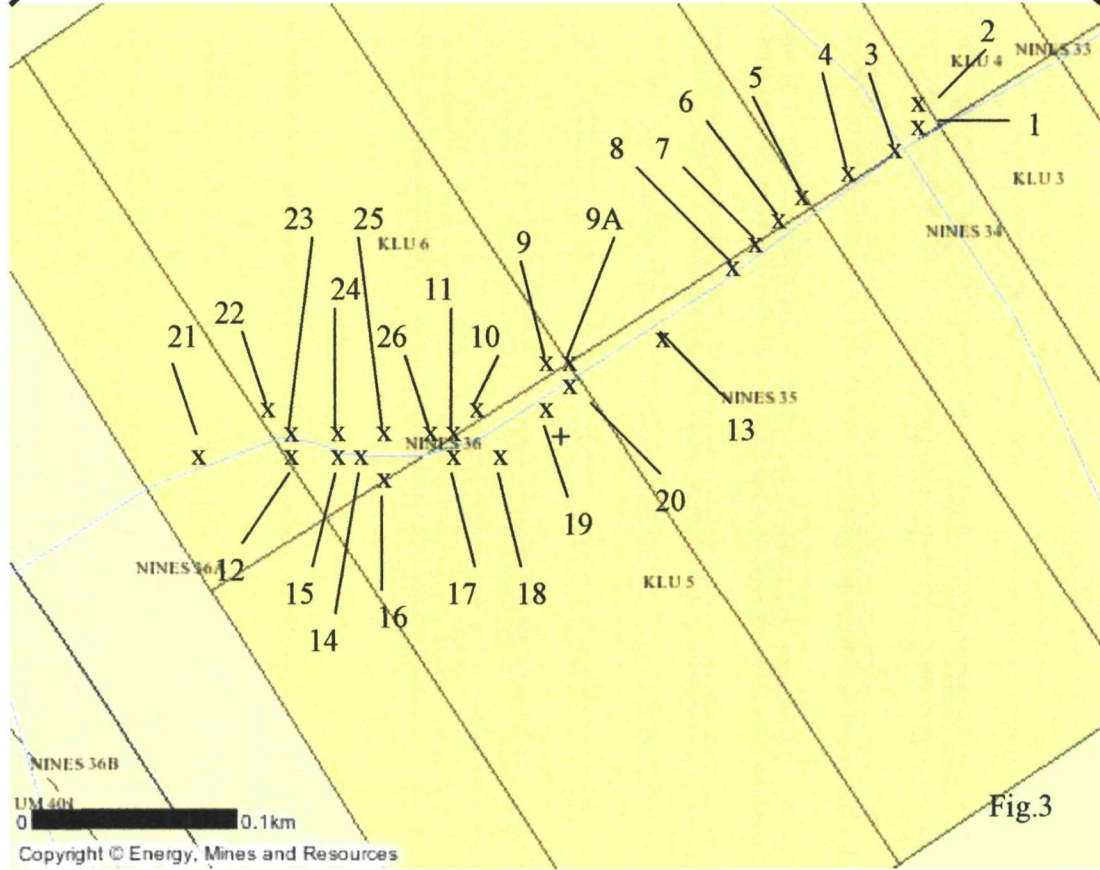
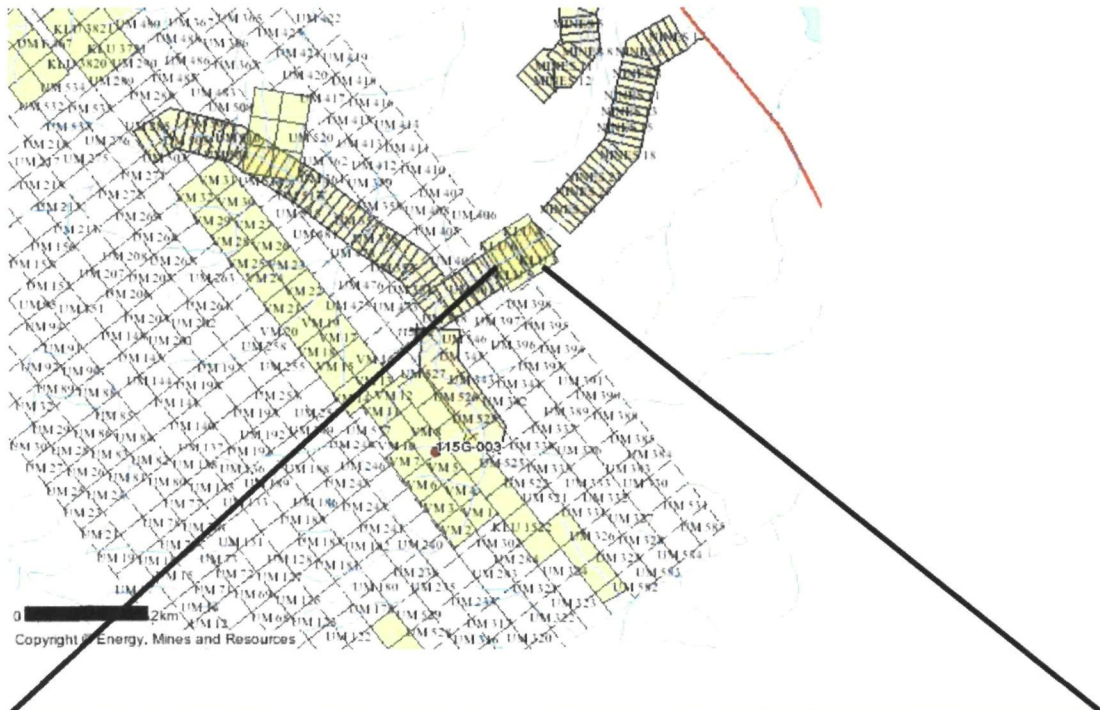


Fig.3

12.0 DATA VERIFICATION

No data verification was completed during the program.

13.0 ADJACENT PROPERTIES

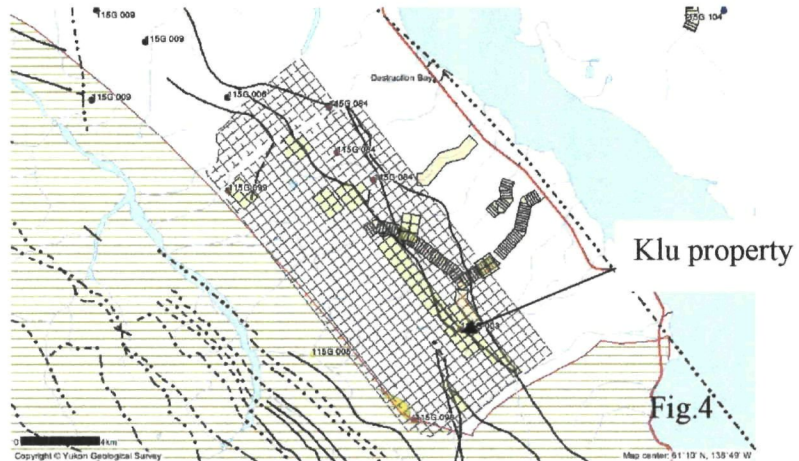
13-1 Klu

The property covers an area of complex geology and thrust faulting in which late Triassic peridotite and gabbro dykes intrude steeply dipping sedimentary rocks of the Permian Hasen Creek Formation.

Ni-Cu-PGE

mineralization in the region is associated with basal marginal gabbro

phase of the Spy Sill. Sulphide mineralization at the Congdon occurrence (Spy Showing) Minfile 115G 003 occurs in siltstone in the footwall of the sill, marginal gabbro and feldspathic peridotite. Chalcopyrite and nickeliferous pyrrhotite at the base of the main peridotite dyke and galena and sphalerite in quartz-carbonate veins up to 30 cm wide which cut the dyke. One vein assayed 1.2% Zn and 0.25% Pb. Minor chalcopyrite and pyrrhotite are reported about 4.8 km to the southeast.



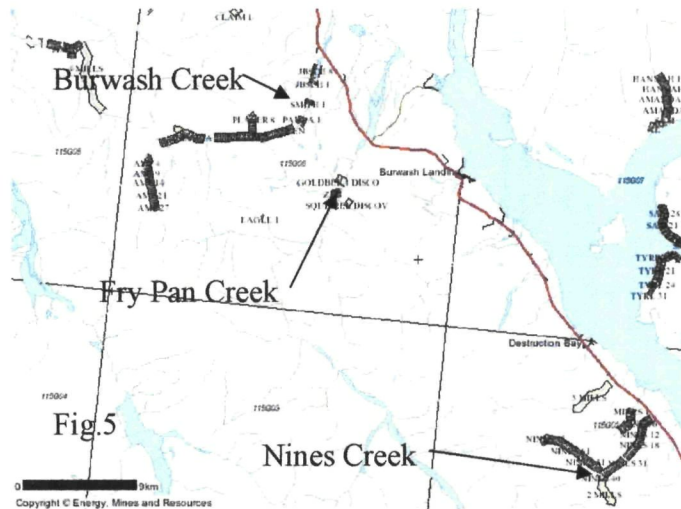
Silt samples from streams draining the Klu claims returned anomalous values (up to 673 ppm Ni) and appear to outline peridotite intrusions. Soil sampling in 1988 outlined four gold and four platinum and palladium anomalies with values up to 920 ppb Au, 158 ppb Pt and 277 ppb Pd over an ultramafic sill. Inco found intermittent sulphide showings over a strike of 3.6 km along the base of the 6 km long Spy Sill. These sulphide showings have highly anomalous PGE grades along with significant Ni and Cu. The number and size of peridotite intrusions occurring on the claim block and in the belt suggest they are part of a very large magmatic system. No significant Ni-Cu-PGE showings have been found at intrusions other than the Spy Sill. Grab samples collected by Inco from the gabbro-siltstone contact assayed up to 3.1% Ni, 2.8% Cu, 0.2% Co, 3.1 g/t Pt, 1.4 g/t Pd and 1.0 g/t Au.

A heavy mineral sample collected 400 m downstream from the intersection of the Spy Sill and the south branch of Nines Creek returned 700 ppm Pt and > 10 000 Au. The high Au value may not necessarily be related to sulphide mineralization.

13-2 Fry Pan Creek (placer)

Fry Pan creek is located 31 km north-west of Nines Creek and exists as a small tributary to the Duke River. Little mining has occurred on the creek and only a few bulk sampling operations have tested the creek gravels. A small test mining of the creek existed in 1989. A second mining operation in 1993 is reported to have sluiced 2500 bcy of material and recovered 256 ounces of placer gold. Test pitting programs

attempted to determine the gold content of the creek gravels in both 1993 and 1995.



The evaluation program completed by the author in 1995 found gold distributed in creek gravels and in the glacial till that covered most of the property. The average grade of the samples collected during the program was 0.33148 oz/lcy. Many of the samples contained a high clay content which proved problematic in the processing (sluicing) and would undoubtedly be an issue in any mining operation on the creek.

13-3 Burwash Creek (placer)

Burwash Creek lies a distance of 37 km north-west of Nines Creek and 6km north-west of Fry Pan Creek. Historical records of gold production are spotty at best with government royalty figures totaling 27,782 crude ounces. This is considered a minimum value as most coarse jewelry gold was and is still sold privately.

Placer gold in Burwash Creek has been found in several types of unconsolidated sediments, including 1) Modern river gravel, 2) at least 2 levels of alluvial bench gravel, 3) Interglacial river gravel, which is in places reworked and buried by modern gravel and glacial material, 4) glaciofluvial gravel, 5) glacial till, 6) colluvium derived from types 2 to 5; 7) tailings from previous mining activity and 8) mine tailings subsequently reworked by flood events in the modern stream.

The fineness of gold on Burwash Creek is unusually consistent throughout its length, varying only from 850 to 860 and showing no distinctive change in distance downstream. The gold is coarse and nuggets are common, with the largest found weighing 16 ounces. Generally the gold is smooth, flat and well travelled, and quartz attachments are rare. In the main valley, the grain size is evenly distributed between plus 8 mesh and minus 8 mesh, while on the benches

coarser gold occurs with the ratio of 90% plus 8 mesh and 10% minus 8 mesh.
(Lebarge, 2008)

14.0 MINERAL PROCESSING AND METALLURGICAL TESTING

There was no mineral processing or metallurgical testing completed during the present program.

15.0 MINERAL RESOURCE AND MINERAL RESERVE ESTIMATES

There was no mineral resource or mineral reserve estimates completed during the present program.

16.0 OTHER RELEVANT DATA AND INFORMATION

There is no other relevant data or information included in this report.

17.0 INTERPRETATION AND CONCLUSIONS

Potentially significant deposits of placer gold may be present on the Nines creek property. Sampling of the Nines Creek gravels in 2008 resulted in visible gold being present in 5 of the 6 samples collected. The weight of the largest flakes recovered was 2.6mg from sample N32.1. The results of the present program demonstrate that the claims comprising the Nines Creek property contain placer gold in the surface environment over a wide area of the creek channel below the lower canyon present on the property. No determination of the potential grade of the placer deposit could be made due to the limited sample size collected during the program.

18.0 RECOMMENDATIONS AND BUDGET

A systematic program of geophysical surveys (resistivity) to determine depth to bedrock followed by excavator test pitting or trenching should be conducted on the property in an effort to determine both the depth of potentially gold bearing gravels and an accurate estimate of the gold content of those gravels. Samples should be taken at appropriate intervals vertically in test pits and both vertically and horizontally in trenches to determine an accurate location of any gold bearing beds and the extent and grade of mineralization within these beds.

Geophysical survey	\$10,000
Excavator (100hr) for testing program	\$20,000
Test plant (10 days)	\$3,000
Mob/demob	\$4,000
Sampler	\$2,000
Forman	\$4,000
Accommodation and meals	\$4,000
Reporting	\$3,000
Contingency (15%)	<u>\$7,500</u>
	\$57,500

19.0 REFERENCES

- Cox, D.P. and Singer, D.A., Editors (1986):** Mineral Deposit Models; U.S. Geological Survey, Bulletin 1693, 379 pages. Höy, T. (1991): Volcanogenic Massive Sulphide Deposits in British Columbia; in Ore Deposits, Tectonics and Metallogeny in the Canadian Cordillera, McMillan, W.J., Coordinator, B.C. Ministry of Energy, Mines and Petroleum Resources, Paper 1991-4, pages 89-123.
- Deklerk, R. and Traynor, S. (compilers), 2005.** Yukon MINFILE 2005 - A database of mineral occurrences. Yukon Geological Survey, CD-ROM.
- Fox, J.S. (1984):** Besshi-type Volcanogenic Sulphide Deposits - a Review; Canadian Institute of Mining and Metallurgy, Bulletin, Volume 77, pages 57-68.
- Franklin, J.M., Lydon, J.W. and Sangster, D.M. (1981):** Volcanic-associated Massive Sulfide Deposits; Economic Geology, 75th Anniversary Volume, pages 485-627.
- Galambos, K. D., 1995.** Evaluation report on Fry Pan Creek property. Yukon Government Assessment Report # 120162.
- Gordey, S. P. and Makepeace, A. J., 2003.** Yukon Digital Geology. Exploration and Geological Services Division, Yukon , Indian and Northern Affairs Canada, Open File 1999-1 (D).
- Hutchinson, R.W. (1980):** Massive Base Metal Sulphide Deposits as Guides to Tectonic Evolution; in The Continental Crust and its Mineral Deposits, Strangway, D.W., Editor, Geological Association of Canada, Special Paper 20, pages 659-684.
- Israel, S., 2009.** Wrangellia, Southwest Yukon: Stratigraphy, Structure, Metallogeny and Tectonic Relationships. Yukon Geological Survey, Geoscience Forum Poster.
- Lebarge, W., 2008.** Burwash Creek Placer Geology, An updated report based on Field Visits September 2008, Yukon Geological Survey, Unpublished report
- M Quest Capital Corporation, March, 2010,** Burwash Creek, Fry Pan Creek, Yukon. Web site: http://www.mquest.biz/show_page.php?page=Home .
- McCulloch, R., Lewis, B., Keill, D. and Shumaker, M., 2003,** Applied Gold Placer Exploration and Evaluation Techniques, Montana Bureau of Mines and Geology, Special Publication 115.

Muller, J.E., 1958, Kluane Lake Map-Area Yukon Territory (115G and F E½), Geological Survey of Canada, Paper 58-9.

Muller, J.E., 1967, Kluane Lake Map-Area Yukon Territory (115G and F E½), Geological Survey of Canada, Memoir 340.

Slack, J.F. (in press): Descriptive and Grade-Tonnage Models for Besshi-type Massive Sulphide Deposits; Geological Association of Canada, Special Paper.

20.0 CERTIFICATION, DATE AND SIGNATURE

1) I, Kenneth Daryl Galambos of 1535 Westall Avenue, Victoria, British Columbia am self-employed as a consultant geological engineer, authored and am responsible for this report entitled "Evaluation Report on the Nines Creek Project", dated March 19, 2010.

2) I am a graduate of the University of Saskatchewan in Saskatoon, Saskatchewan with a Bachelors Degree in Geological Engineering (1982). I began working in the mining field in 1974 and have more than 26 years mineral exploration and production experience, primarily in the North American Cordillera. Highlights of this experience include the discovery and delineation of the Brewery Creek gold deposit, near Dawson City, Yukon for Noranda Exploration Ltd.

3) I am a registered member of the Association of Professional Engineers of Yukon, registration number 0916 and have been a member in good standing since 1988.

4) I have visited the subject mining property of this report and am a "Qualified Person" in the context of and have read and understand National Instrument 43-101 and the Companion Policy to NI 43-101. This report was prepared in compliance with NI 43-101.

5) This report is based upon a site visit to the property from September 25-27, 2008, the author's personal knowledge of the region and a review of additional pertinent data.

6) As stated in this report, in my professional opinion the property is of potential merit and further exploration work is justified.

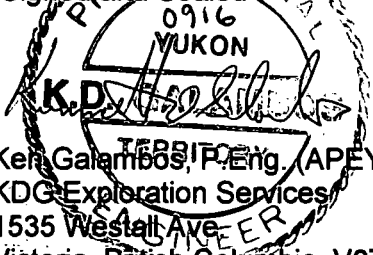
7) To the best of my knowledge this report contains all scientific and technical information required to be disclosed so as not to be misleading.

8) I am partners with Ralph Keefe on Nines Creek and on a number of properties in the Babine/Takla Lakes and other areas of British Columbia. My professional relationship is as a non-arm's length consultant, and I have no expectation that this relationship will change.

9) I consent to the use of this report by Ralph Keefe for such assessment and/or regulatory and financing purposes deemed necessary, but if any part shall be taken as an excerpt, it shall be done only with my approval.

Dated at Victoria, British Columbia this 19th day of March, 2010.

"Signed and Sealed"



K.D. Galambos
Ken Galambos, P.Eng. (APEY Reg. No. 0916)
KDG Exploration Services
1535 Westall Ave.
Victoria, British Columbia V8T 3G6

Appendix A

**Weight
of
Recovered Gold**

Appendix A

Abbreviations for visual estimate of gold in concentrate:
vs-very small, s-small, m-medium, ml-medium large, l-large

Sample #	Gold in fines	Weight of gold
	#	mg
N31-1	0	
N32-1	1 fl, 1 ml	2.6
N33-1	1 s	0.1
N34-1	1 m	0.1
LC-Bank	2 s	0.1
LC-HG	numerous s	2

Appendix B

**Assay Results
of
Sample Concentrates**

	Method Analyte Unit MDL	G6 Au GM/T 0.01
Sample	Type	
N31-1	Concentrate	0.4
N32-1	Concentrate	1.18
N33-1	Concentrate	0.81
N34-1	Concentrate	0.4
LC-BANK	Concentrate	1.76
LC-HG	Concentrate	4.02
Reference		
Materials		
STD OXH55	STD	1.35
STD OXK69	STD	3.69
STD OXH55	STD	1.3
STD OXK69	STD	3.72
STD OXH55	STD	1.29
STD OXK69	STD	3.59
STD OXH55	STD	1.31
STD OXK69	STD	
STD OXH55	STD	1.31
STD OXH55	STD	1.33
STD OXH55	STD	1.38
STD OXH55	STD	1.34
STD OXH55	STD	1.38

Appendix C

**Total Magnetic Field Survey
on
Placer Prospecting Lease IW00266
Nines Creek, Yukon**

Registered Owner: Ralph Keefe

Total Magnetic Field Survey
on
Placer Prospecting Lease IW00266
Nines Creek, Yukon
Registered Owner: Ralph Keefe

Whitehorse Mining District, NTS: 115 G/02
Latitude: 61° 06' 50", Longitude: 138° 44' 00"
Dates Worked: August 22 – 28, 2009

By:

Robert Stirling
12 Mossberry Lane
Whitehorse, Yukon Y1A 5W4
Tel: 867-633-3829

Dated: September 09, 2009

TABLE OF CONTENTS

1.0 Summary and Introduction	3
2.0 Property Description and Location	3
3.0 Accessibility and Infrastructure	4
4.0 History	4
5.0 Physiography and Vegetation	4
6.0 Geological Setting	4
7.0 Geophysical Survey	6
7.1 Layout of Survey Grid	6
7.2 Survey Methods and Equipment	6
8.0 Interpretation and Conclusions	7
9.0 Recommendations	7

FIGURES (following page 3)

- Figure 1: Location Map – Yukon
- Figure 2: Location Map – Prospecting Lease
- Figure 3: Total Magnetic Field Survey – Above Canyon
- Figure 4: Total Magnetic Field Survey – Below Canyon
- Figure 5: Total Magnetic Field Survey – Profile of Lower Canyon

APPENDICES

- Appendix 1: Statement of Costs
- Appendix 2: Log of Work
- Appendix 3: Statement of Qualifications
- Appendix 4: Raw and Corrected Survey Data

Total Magnetic Field Survey on Prospecting Lease IW00266

1.0 Summary and Introduction

A 5 mile placer prospecting lease was staked on Nines Creek in September 2008 by Ralph Keefe, P.O. Box 201, Francois Lake, BC V0J 1R0. In 2008 Ralph Keefe and Ken Galambos spent 3 weeks evaluating the placer potential of Nines Creek.

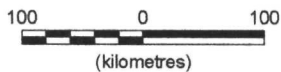
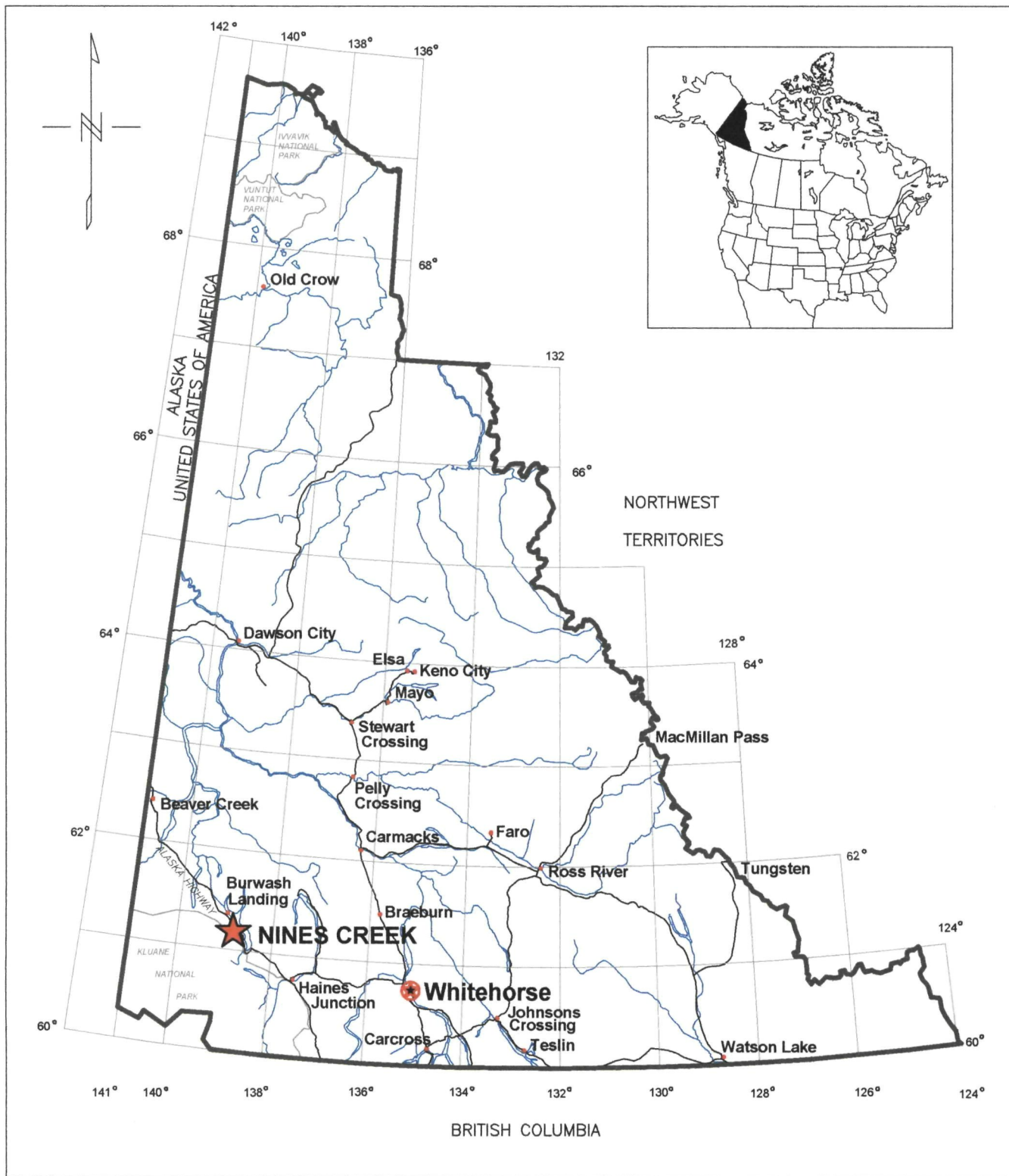
The purpose of the total field magnetic survey was to locate areas of magnetite concentration. Gold and heavy minerals are often associated with magnetite deposition.

2.0 Property Description and Location

The 5 mile prospecting lease is located in the Whitehorse Mining District, N.T.S. 115 G/02. The center of the area surveyed is located at latitude: 61° 06' 50", longitude: 138° 44' 00".

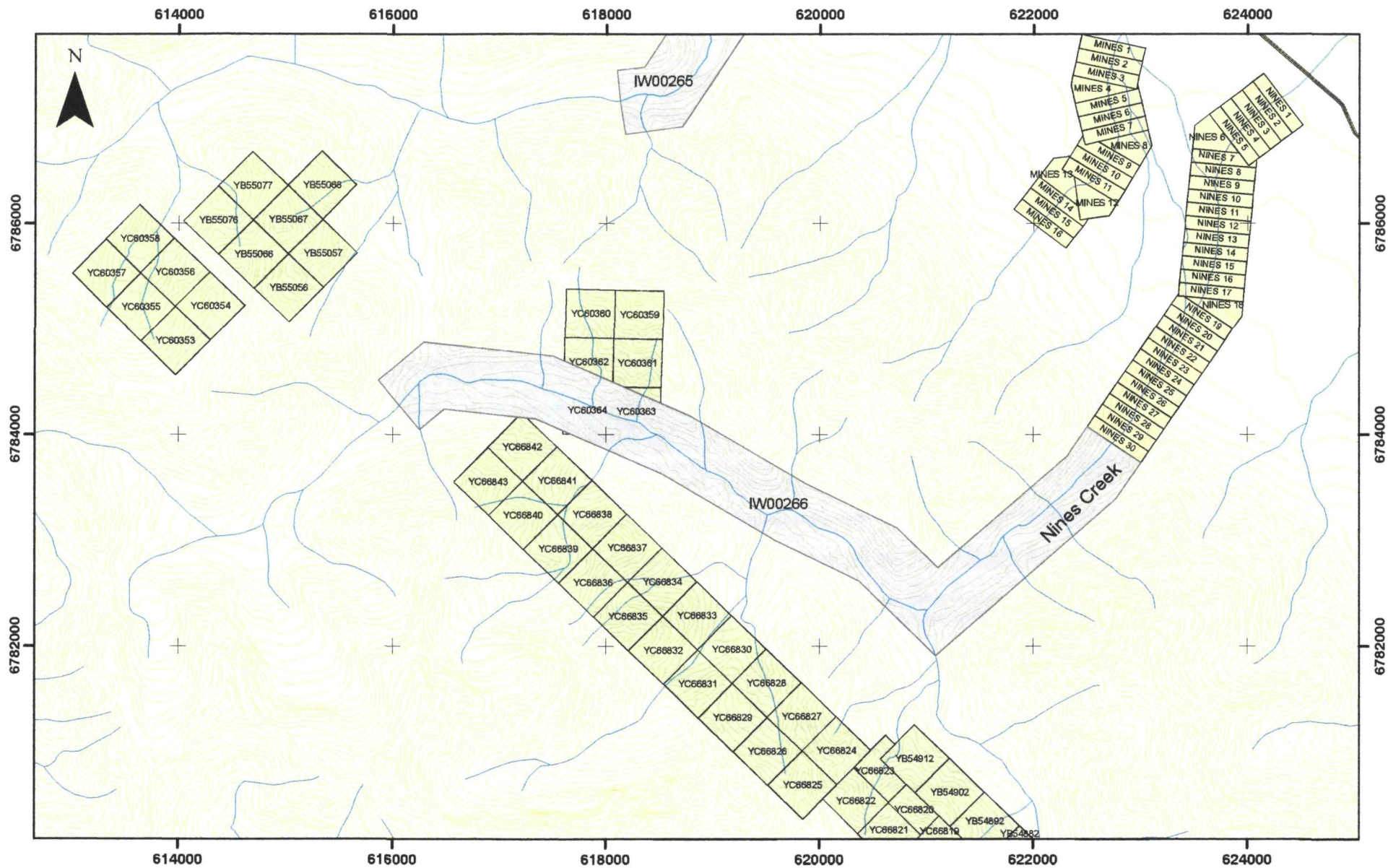
The lease is in good standing and ownership is as follows.

Grant No.	Type	Owner	Recording Date	Expiry Date	NTS
IW00266	Prospecting Lease	Ralph Keefe - 100%	2008-09-30	2009-09-30	115G02



RALPH KEEFE	
NINES CREEK PLACER LEASE IW00266	
LOCATION MAP	
FIGURE 1	
NTS: 115 G/02	Mining District: Whitehorse
Datum: N/A	Projection: N/A
Job: 2009-RK-01	Date: 05 Sept 09
Stewart Basin Exploration	

Prospecting Lease Location Map



0 500 1,000 2,000 3,000 4,000 5,000 Metres

1:50,000

Legend

- Placer Prospecting Lease
- Placer Claim
- Quartz Claim**
- Active

NTS: 115 G02
UTM NAD 83 Zone 7N

Figure 2

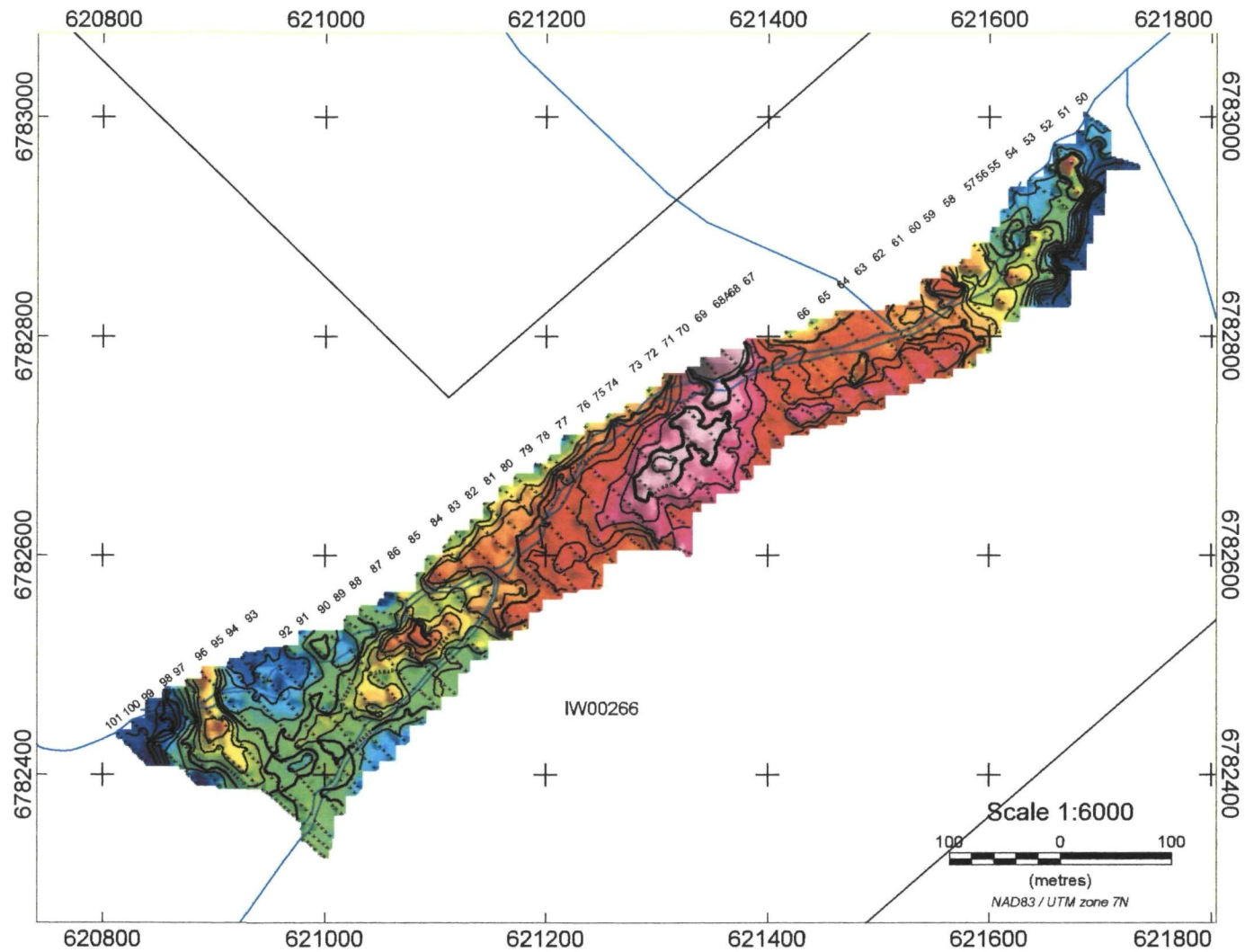
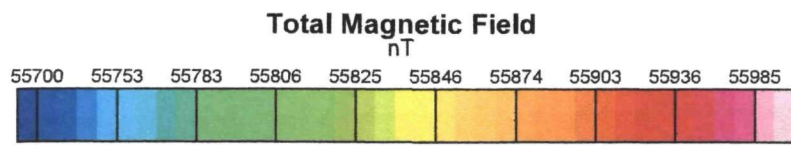


Figure 3



Ralph Keefe
5 Mile Placer Lease IW00266, Nines Creek, Yukon Total Magnetic Field Survey - Above Canyon
115 G/02 - September 09, 2009
Stewart Basin Exploration

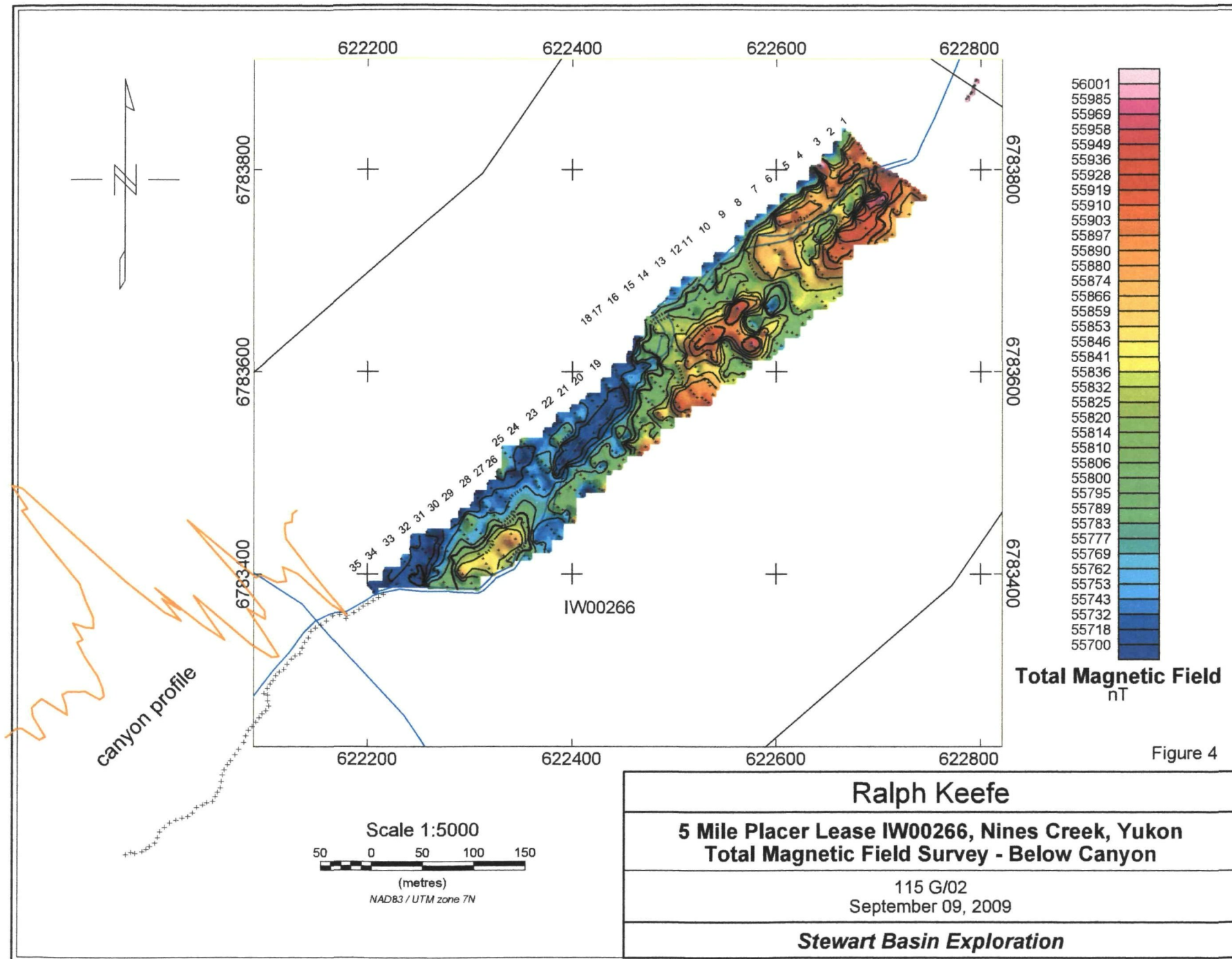
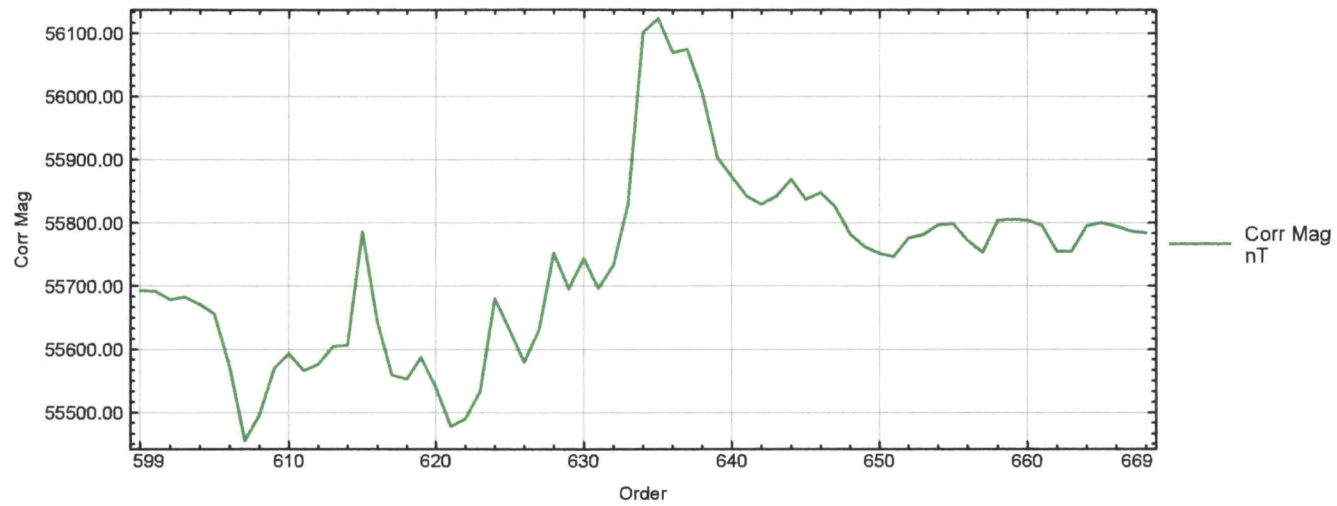


Figure 4

Nines Creek, Total Magnetic Field
Profile through lower canyon, looking south



Stewart Basin Exploration
database: R Keefe\Geosoft\canyon profile.gdb

Figure 5
2009/09/09

3.0 Accessibility and Infrastructure

The lease is located on Nines Creek approximately 270 km northwest of Whitehorse and 8 km southeast of Destruction Bay, Yukon. Nines Creek flows to the northeast into Kluane Lake.

Access is via the Alaska Highway and a 2 wheel drive gravel road for a distance of 3.5 km where it is washed out. Beyond this access is by quad to the base of the canyon, with creek crossings. Access is by foot or helicopter beyond this point.

4.0 History

The history of the area is unknown. There was no evidence of placer mining in the area of the survey. Several older quartz claim posts and one placer post was found.

5.0 Physiography and Vegetation

The area of the survey is located in the St. Elias Mountains to the south of Kluane Lake in the Kluane Game Sanctuary at an elevation of 1,100 metres. Bedrock outcrop was noted in the survey area and in the canyons. Spruce and willow are moderately dense on both limits of the creek. The active creek area is open and rocky with vegetation of thinly scattered willow.

The width of active creek area above the canyon is from 80 to 210 metres. The width of active creek area below the canyon is from 50 to 85 metres.

The gravels in the survey area appear to be thawed.

Evidence of grizzly bear and sheep was noted.

6.0 Geological Setting

The geology in the area is as follows.

NW1: WRANGELL LAVAS

rusty red-brown, phyrlic and non-phyrlic basaltic andesite flows (minor pillow lava), interbedded with felsic tuff, volcanic sandstone and conglomerate; acid pyroclastics related to intra-Wrangell intrusions; thin basaltic andesite and andesite flows (**Wrangell Lavas**)

MW: WRANGELL SUITE

fine to medium grained, hornblende +/- biotite granodiorite and porphyritic (K-feldspar) hornblende granodiorite; medium grained, uniform biotite diorite and pyroxene gabbro; subvolcanic hornblende +/- biotite rhyolite, rhyodacite, dacite, and trachyte (**Wrangell Suite**)

CPS1: SKOLAI

volcanics succeeded upward by clastic strata, tuff, breccia, argillite, agglomerate, augite-phyric basaltic to andesitic flows (Station Cr. Fm); succeeded by thin-bedded argillite, siltstone, minor greywacke and conglomerate and local thin basaltic flows, breccia and tuff (Hasen Cr. Fm) (**Skolai Gp., Station Creek and Hasen Creek**)

JKD1: DEZADEASH

interbedded light to dark buff-grey lithic greywacke, sandstone, siltstone, thin dark grey shale, argillite, phyllite and conglomerate; rare tuff (**Dezadeash**)

uTrC: CHITISTONE

thin interbedded light to dark grey argillaceous limestone and dark grey argillite; massive light grey limestone, limestone breccia and darker grey, well-bedded limestone; white to creamy-white gypsum and anhydrite (**McCarthy, Chitistone and Nizina limestones**)

uTrN: NICOLAI

amygdaloidal basaltic and andesitic flows, with local tuff, breccia, shale and thin-bedded bioclastic limestone; volcanic breccia, pillow lava and conglomerate at base; locally includes dark grey phyllite and minor thin grey limestone of Middle Triassic (**Nicolai Greenstone**)

PTrK1: KLUANE ULTRAMAFIC SUITE

medium grey-green, massive, medium grained, pyroxene gabbro and greenstone sills; sheeny black peridotite, rare dunite (**Kluane-type Mafic-Ultramafics; Squaw Datlasaka Ranges Gabbro-Diabase Sills**)

7.0 Geophysical Survey

A closely spaced total magnetic field survey was performed for the purpose of locating areas of magnetite concentration. Magnetite and heavy mineral concentration is often accompanied by gold. The survey was located in two areas, above and below a section of the creek that passes through a canyon. The canyon exposes bedrock at various locations.

7.1 Layout of Survey Grid

A grid was located using an azimuth of 142 degrees for the grid lines. The compass declination was 23.5 degrees east. The base line was marked with pickets and end of lines with pickets and/or flagging. Line was cut with hand tools and flagged to the extent that one could see from point to point or be able to walk through the bush without too many problems. In open areas line was followed by sighting on the baseline picket or person standing at the picket.

The station spacing was 5 metres and the line spacing 20 metres.

The upper and lower canyons were not accessible to survey with the grid layout so a profile line was run for the length of the lower canyon. The station spacing was 5 metres.

7.2 Survey Methods and Equipment

A GEM Systems GSM 19T proton magnetometer was used for the base station. Base station readings were taken every 3 seconds. A GEM Systems GSM 19 TW proton magnetometer was used for the mobile unit. Mobile stations were read in immediate mode with interpolation.

The mobile unit was equipped with differential GPS. Real time corrections were made when sufficient data was available. Post processing was disabled. GPS positions were recorded in NAD83 UTM Zone 7N. The magnetometer survey was run by Bob Stirling of Whitehorse, Yukon. Ralph Keefe established the survey grid and reference points and assisted with logistics.

Survey data was downloaded each day to a field computer and corrected for diurnal drift. A datum of 56,000 nT was used. Four stations on the grid were read each day in order to level the data. Based on the readings it was not necessary to level data from day to day. Survey data was corrected with GEMLinkW 4.

Number of stations established: 1,700

Line kilometres surveyed: 8.5 km

The survey data was compiled, checked and edited. Approximately 35 southerly GPS locations were edited due to poor satellite reception. The poor reception was related to multipath errors and higher elevation directly to the south of the grid.

Colour contour maps were produced using a minimum curvature gridding method and a grid cell size of 1.25m (25% of the sample spacing). Geosoft Target was used for gridding and geophysical map production.

8.0 Interpretation and Conclusions

The survey was completed successfully and areas of interest were found.

Anomaly A

A magnetic high anomaly was found above the canyon on lines 61 to 85. Bedrock outcrop was not observed in this area. The left and right limit valley slopes consist of alluvial till and/or glacial outwash and slide rock. Anomaly A may be related to the alluvial environment as the water velocity slows here before entering the canyon. The width of the active channel decreases considerably.

Anomaly B

A moderate to high magnetic anomaly was found below the canyon on lines 1 to 9 and 10 to 15. Bedrock outcrop was not seen in this area. The anomaly on the far right limit is likely related to slide rock or sub-crop as the grid was extended upslope from the edge of the active creek. The anomaly on the mid to left limit may be related to the alluvial environment. Water slows in this area as the extents of the creek valley widen.

A small bench may be present on the right limit lines 1-2 and is coincident with the magnetic high anomaly.

9.0 Recommendations

The depth to bedrock should be determined. Excavator test pits were dug on the claims below the lease in 2008 by the respective claim holders. The size of the excavator is unknown. Bedrock was not reached in any of the test pits. (Pers. communication R. Keefe)

A seismic survey may be suitable for determining the depth to bedrock.

The areas of Anomaly A & B should be followed up with excavator test pits and/or drilling to determine if the anomalies are related to the alluvial environment.

Total Magnetic Field Survey on Prospecting Lease IW00266

Appendix 1

Statement of Costs

Prospecting Lease IW00266

Dates worked: August 22 – 28, 2009

Costs are for R. Stirling unless noted.

<u>Item</u>	<u>Details</u>	<u>Amount and Unit Cost</u>	<u>Total Cost</u>
Geophysical survey	R. Stirling	5 days @ \$400/day	\$2,000.00
Gridding for survey	R. Keefe	5 days @ \$400/day	\$2,000.00
Mob-demob	R. Stirling	1 days @ \$300/day	\$300.00
Transportation	Vehicle	2 days @ \$150/day	\$300.00
Transportation	Trailer	2 days @ \$50/day	\$100.00
Transportation	Quad	5 days @ \$75/day	\$375.00
Transportation	Fuel gas	17.4 l @ 1.069/l	\$18.60
Transportation	Fuel diesel	87.24 l @ 1.029/l	\$89.77
Survey equipment	Proton Magnetometers	4 days @ \$175/day	\$700.00
Report	Process data, maps and report writing	2.0 days @ \$400/day	\$800.00
		TOTAL COST	\$6,683.37

Total Magnetic Field Survey on Prospecting Lease IW00266

Appendix 2

Log of Work: Robert Stirling (RS), 12 Mossberry Lane, Whitehorse, Yukon Y1A 5W4
Ralph Keefe (RK), P.O. Box 201, Francois Lake, BC V0J 1R0

Date	Description
Aug. 22 nd	Mobilize gear with truck and trailer from Whitehorse to Nines Creek. RS
Aug. 23 rd	Locate grid lines on right limit below canyon. RS/RK
Aug. 24 th	Magnetometer survey on right and left limit below lower canyon. Download data. Base station was not started correctly so will have to be redone. RS Locate grid lines for survey. RK
Aug. 25 th	Redo mag on right and left limit grid below lower canyon. Download, level and plot data. RS Locate grid lines for survey. RK
Aug. 26 th	Locate baseline above canyon to fork of creek. RS/RK Magnetometer survey on left limit from the forks to start of the upper canyon. Download and level data. RS Locate grid lines for survey. RK
Aug. 27 th	Magnetometer survey on left and right limits of both forks from line 103 towards upper canyon. RS Locate grid lines for survey. RK
Aug. 28 th	Magnetometer survey on right limit ending at the upper canyon. Demob from Nines Creek to Whitehorse. RS Locate grid lines for survey. RK
Aug. 30 th to Sept. 6 th	Process data, produce maps and write report. RS

Appendix 3

Statement of Qualifications

I, Robert Stirling, with business address of 12 Mossberry Lane, Whitehorse, Yukon Y1A 5W4, do hereby certify that:

1. I have been involved in mining and exploration in the Yukon and Northwest Territories since 1977.
2. I am experienced in performing total magnetic field surveys, processing data and producing contour maps.
3. I have been involved in placer prospecting in the Yukon since 1990.
4. I have produced maps and compiled data for geological reports since 1991.
5. I, Robert Stirling collected the data for this report.
6. I, Robert Stirling have no (0%) interest in the prospecting lease described in this report.

Robert Stirling

Appendix 4

Raw and Corrected Survey Data

Survey data is included in text and spreadsheet format in the digital file.

Appendix D

**Assay Results
of
Prospecting Samples**



Acme Analytical Laboratories (Vancouver) Ltd.

1020 Cordova St. East Vancouver BC V6A 4A3 Canada
Phone (604) 253-3158 Fax (604) 253-1716

www.acmelab.com

Client: **Keefe, Ralph R.**
Box 201
Francois Lake BC V0J 1R0 Canada

Submitted By: Ralph R. Keefe
Receiving Lab: Canada-Vancouver
Received: September 16, 2009
Report Date: October 08, 2009
Page: 1 of 2

CERTIFICATE OF ANALYSIS

VAN09004270.1

CLIENT JOB INFORMATION

Project: None Given
Shipment ID:
P.O. Number
Number of Samples: 26

SAMPLE DISPOSAL

DISP-PLP: Dispose of Pulp After 90 days
DISP-RJT: Dispose of Reject After 90 days

Acme does not accept responsibility for samples left at the laboratory after 90 days without prior written instructions for sample storage or return.

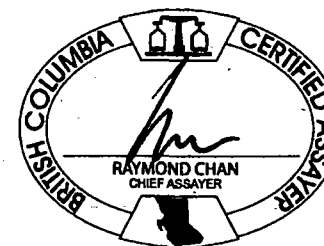
SAMPLE PREPARATION AND ANALYTICAL PROCEDURES

Method Code	Number of Samples	Code Description	Test Wgt (g)	Report Status	Lab
R200-250	26	Crush, split and pulverize 250 g rock to 200 mesh			VAN
1F02	26	1:1:1 Aqua Regia digestion Ultratrace ICP-MS analysis	15	Completed	VAN
G6	1	Fire Assay fusion Au by ICP-ES	30	Completed	VAN

ADDITIONAL COMMENTS

Invoice To: **Keefe, Ralph R.**
Box 201
Francois Lake BC V0J 1R0
Canada

CC: K. Galambos



This report supersedes all previous preliminary and final reports with this file number dated prior to the date on this certificate. Signature indicates final approval; preliminary reports are unsigned and should be used for reference only. All results are considered the confidential property of the client. Acme assumes the liabilities for actual cost of analysis only.

*** asterisk indicates that an analytical result could not be provided due to unusually high levels of interference from other elements.



1020 Cordova St. East Vancouver BC V6A 4A3 Canada
 Phone (604) 253-3158 Fax (604) 253-1716

Acme Analytical Laboratories (Vancouver) Ltd.

www.acmelab.com

Client: Keefe, Ralph R.
 Box 201
 Francois Lake BC V0J 1R0 Canada

Project: None Given
 Report Date: October 08, 2009

Page: 2 of 2 Part 1

CERTIFICATE OF ANALYSIS

VAN09004270.1

Method	WGHT	1F15	1F15	1F15	1F15	1F15	1F15	1F15	1F15	1F15	1F15	1F15	1F15	1F15	1F15	1F15	1F15	1F15	1F15	1F15	
Analyte	Wgt	Mo	Cu	Pb	Zn	Ag	Ni	Co	Mn	Fe	As	U	Au	Th	Sr	Cd	Sb	Bi	V	Ca	
Unit	kg	ppm	ppm	ppm	ppm	ppb	ppm	ppm	ppm	%	ppm	ppm	ppb	ppm	ppm	ppm	ppm	ppm	ppm	%	
MDL	0.01	0.01	0.01	0.01	0.1	2	0.1	0.1	1	0.01	0.1	0.1	0.2	0.1	0.5	0.01	0.02	0.02	2	0.01	
K-1	Rock	0.85	0.38	113.2	1.69	49.3	51	25.4	20.1	746	3.90	0.7	<0.1	0.5	0.4	142.0	0.05	0.74	0.04	71	4.16
K-2	Rock	1.22	0.08	8.94	2.45	14.6	11	51.6	12.0	602	1.34	1.0	<0.1	0.5	<0.1	464.0	0.02	0.12	0.03	50	21.33
K-3	Rock	0.97	0.30	116.8	1.49	44.8	47	42.5	27.2	741	3.73	8.1	0.1	<0.2	0.5	149.4	0.10	1.18	0.03	117	3.39
K-4	Rock	0.62	0.09	63.07	1.99	34.3	36	30.5	19.6	928	3.73	1.2	0.1	14.7	0.9	224.6	0.07	0.59	0.04	78	8.76
K-5	Rock	1.03	0.40	87.42	1.43	44.8	32	161.8	32.6	1301	4.49	1.0	<0.1	1.2	0.2	272.5	0.12	0.44	<0.02	127	9.90
K-6	Rock	0.84	0.14	100.1	3.91	30.2	38	23.8	19.2	1098	3.17	1.6	<0.1	5.5	0.2	333.7	0.17	0.38	0.03	66	10.47
K-7	Rock	0.81	1.14	34.58	5.63	59.3	416	98.8	52.1	749	7.74	10.1	0.2	21.7	1.4	29.8	0.08	0.60	0.12	62	1.46
K-8	Rock	0.90	0.65	115.5	5.27	33.5	299	37.6	12.8	621	3.00	4.1	0.3	0.6	0.2	34.1	0.23	0.51	0.04	85	3.03
K-9	Rock	0.96	0.16	139.0	1.15	53.2	69	33.6	23.4	1142	4.10	1.1	<0.1	1.8	<0.1	207.2	0.25	0.05	<0.02	161	10.94
K-9A	Rock	0.85	3.81	76.37	12.45	16.3	701	41.0	21.8	303	3.81	18.2	0.4	1149	<0.1	22.1	0.19	0.74	0.28	24	1.63
K-10	Rock	1.15	0.25	61.77	0.40	79.4	29	58.3	39.6	1169	5.49	2.5	0.1	1.6	<0.1	162.4	0.18	0.18	<0.02	222	8.45
K-11	Rock	0.45	0.74	88.10	2.92	18.6	79	9.5	10.4	700	1.61	1.2	<0.1	3.1	0.2	82.4	0.09	0.18	0.03	46	12.01
K-12	Rock	0.52	0.13	91.17	1.86	39.4	58	35.1	18.9	1589	4.67	0.6	<0.1	1.1	<0.1	85.0	0.21	0.06	0.03	96	11.87
K-13	Rock	1.37	0.12	54.43	1.44	64.0	40	27.4	26.0	1046	4.73	2.0	<0.1	2.7	<0.1	231.5	0.15	0.06	<0.02	234	11.55
K-14	Rock	0.77	0.17	26.99	1.76	78.6	95	13.4	6.1	462	4.58	2.3	<0.1	5.8	0.3	31.7	0.06	0.26	0.11	26	2.40
K-15	Rock	0.77	0.56	88.14	6.96	49.7	75	90.9	33.2	1134	5.17	2.4	<0.1	1.4	0.3	174.6	0.16	0.08	0.04	208	8.08
K-16	Rock	0.66	0.10	39.85	0.87	69.0	14	77.1	31.5	1153	5.76	1.4	<0.1	0.3	0.3	188.4	0.11	0.10	<0.02	168	7.33
K-17	Rock	0.74	0.48	44.76	0.96	78.5	18	64.6	35.1	1085	6.76	4.2	<0.1	<0.2	0.5	169.6	0.20	0.56	<0.02	187	5.38
K-18	Rock	0.61	0.06	72.13	1.47	63.3	37	39.6	14.4	821	5.54	0.7	0.2	2.0	1.1	81.4	0.04	0.15	0.03	54	2.74
K-19	Rock	0.68	1.38	61.08	4.71	32.5	25	62.8	18.0	1444	3.38	3.1	<0.1	4.0	0.2	310.1	0.27	0.22	<0.02	58	11.21
K-20	Rock	0.60	0.07	75.29	2.42	62.3	93	35.4	22.1	1056	5.50	19.2	<0.1	<0.2	0.2	77.3	0.07	0.26	<0.02	106	5.04
K-21	Rock	0.52	0.08	60.28	1.09	48.2	26	30.0	12.6	779	4.32	0.8	0.1	0.7	0.9	53.3	0.03	0.10	0.03	38	3.67
K-22	Rock	0.70	1.75	2.90	1.32	85.9	34	2.3	8.3	717	3.29	3.3	0.3	0.8	1.1	34.9	0.08	0.18	0.04	38	0.85
K-23	Rock	0.51	0.19	93.81	1.83	52.9	38	65.4	29.9	1083	4.92	1.5	0.2	1.6	0.4	69.3	0.11	0.36	<0.02	190	3.66
K-24	Rock	0.52	0.59	49.91	0.52	64.6	48	31.8	23.4	913	5.09	1.5	<0.1	<0.2	<0.1	66.6	0.17	0.12	<0.02	142	3.89
K-25	Rock	0.70	0.18	107.9	2.53	38.2	48	29.8	18.8	2234	6.80	1.6	0.1	1.2	<0.1	188.1	0.37	0.19	0.03	165	20.50



1020 Cordova St. East Vancouver BC V6A 4A3 Canada
Phone (604) 253-3158 Fax (604) 253-1716

Acme Analytical Laboratories (Vancouver) Ltd.

www.acmelab.com

Client: **Keefe, Ralph R.**
Box 201
Francois Lake BC V0J 1R0 Canada

Project: None Given
Report Date: October 08, 2009

Page: 2 of 2 Part 2

CERTIFICATE OF ANALYSIS

VAN09004270.1

Method	Analyte	Unit	MDL	1F15 P %	1F15 La ppm	1F15 Cr ppm	1F15 Mg %	1F15 Ba ppm	1F15 Ti %	1F15 B ppm	1F15 Al %	1F15 Na %	1F15 K %	1F15 W ppm	1F15 Sc ppm	1F15 Ti ppm	1F15 S %	1F15 Hg ppb	1F15 Se ppm	1F15 Te ppm	1F15 Ga ppm	1F15 Au gm/mt	GG
K-1	Rock			0.052	7.0	41.7	2.26	31.9	0.001	9	1.51	0.026	0.13	<0.1	11.1	<0.02	<0.02	27	0.2	<0.02	3.5		
K-2	Rock			0.020	1.5	184.6	1.42	25.0	0.002	3	1.06	0.001	<0.01	<0.1	9.5	<0.02	<0.02	<5	0.2	0.07	2.1		
K-3	Rock			0.077	5.2	87.6	2.42	67.7	0.071	8	2.31	0.038	0.05	<0.1	19.1	<0.02	<0.02	38	0.2	<0.02	5.3		
K-4	Rock			0.083	6.0	58.0	2.21	41.2	0.001	13	1.31	0.021	0.17	<0.1	10.6	<0.02	0.14	55	0.7	<0.02	3.1		
K-5	Rock			0.048	3.5	184.2	4.10	180.7	0.002	10	2.26	0.013	0.03	<0.1	15.6	<0.02	0.04	80	0.1	0.03	6.0		
K-6	Rock			0.066	3.8	23.4	1.77	53.3	0.002	12	1.83	0.015	0.18	0.1	10.0	<0.02	0.07	37	0.4	<0.02	3.9		
K-7	Rock			0.041	6.0	34.9	1.30	67.8	0.003	10	2.22	0.006	0.12	<0.1	5.4	<0.02	1.83	174	1.1	0.22	6.4		
K-8	Rock			0.025	4.8	27.4	0.67	13.5	<0.001	4	1.27	0.003	0.05	<0.1	3.5	<0.02	0.52	101	1.1	0.03	3.2		
K-9	Rock			0.037	1.4	45.6	3.99	17.3	<0.001	8	0.39	0.006	0.09	<0.1	13.6	<0.02	<0.02	51	0.5	<0.02	1.2		
K-9A	Rock			0.015	2.1	24.4	0.17	22.0	<0.001	2	0.42	0.002	0.04	<0.1	1.3	<0.02	3.15	67	1.9	0.12	1.2	1.39	
K-10	Rock			0.056	2.0	102.1	3.23	8.5	0.005	8	0.61	0.020	0.03	<0.1	28.0	<0.02	<0.02	26	0.4	<0.02	1.8		
K-11	Rock			0.043	2.1	12.3	0.65	21.3	0.093	3	1.10	0.014	0.16	<0.1	4.4	<0.02	0.03	9	0.2	0.04	2.2		
K-12	Rock			0.033	2.3	33.0	1.55	46.0	0.106	2	2.07	0.002	0.04	<0.1	14.4	<0.02	<0.02	12	0.4	<0.02	5.5		
K-13	Rock			0.035	1.1	22.0	4.45	73.0	0.003	3	0.34	0.005	0.02	<0.1	15.0	<0.02	0.03	70	0.8	<0.02	0.9		
K-14	Rock			0.013	4.4	17.8	1.07	409.7	0.006	<1	1.58	0.001	<0.01	<0.1	3.7	<0.02	0.11	51	0.4	0.02	4.4		
K-15	Rock			0.083	6.6	240.9	4.55	26.9	0.005	4	3.83	0.011	0.04	<0.1	21.5	<0.02	0.11	<5	0.4	<0.02	8.1		
K-16	Rock			0.075	5.1	91.6	3.35	7.7	0.002	6	0.41	0.009	0.02	<0.1	21.4	<0.02	<0.02	<5	0.3	<0.02	1.2		
K-17	Rock			0.098	9.4	120.8	3.23	169.4	0.007	12	1.55	0.021	0.02	<0.1	24.0	<0.02	0.09	24	0.7	<0.02	5.7		
K-18	Rock			0.024	12.3	42.1	2.15	368.2	0.058	3	2.46	0.002	0.01	<0.1	4.7	<0.02	0.02	<5	0.3	<0.02	5.0		
K-19	Rock			0.071	6.2	103.7	2.31	67.2	0.001	5	1.57	0.003	0.17	<0.1	9.9	<0.02	<0.02	<5	0.3	<0.02	2.9		
K-20	Rock			0.109	5.4	30.8	2.62	63.0	0.005	6	3.89	0.004	0.24	<0.1	10.4	<0.02	<0.02	<5	0.2	<0.02	6.5		
K-21	Rock			0.039	12.3	20.5	1.38	106.4	0.027	2	1.73	0.006	0.10	<0.1	2.9	<0.02	0.12	<5	0.5	<0.02	4.0		
K-22	Rock			0.299	30.1	2.3	0.24	57.8	0.083	3	0.32	0.098	0.06	<0.1	5.4	<0.02	<0.02	<5	0.3	<0.02	2.2		
K-23	Rock			0.103	2.0	158.7	3.22	47.7	0.222	4	3.02	0.039	0.02	0.1	21.1	<0.02	0.14	14	0.6	<0.02	7.5		
K-24	Rock			0.061	2.2	64.6	1.29	59.1	0.004	12	0.90	0.014	0.18	<0.1	15.8	<0.02	<0.02	<5	0.2	<0.02	2.4		
K-25	Rock			0.048	3.1	23.7	1.64	38.5	0.102	2	2.15	0.002	0.03	0.1	19.9	<0.02	0.12	<5	0.6	0.03	6.0		

This report supersedes all previous preliminary and final reports with this file number dated prior to the date on this certificate. Signature indicates final approval; preliminary reports are unsigned and should be used for reference only.



Acme Analytical Laboratories (Vancouver) Ltd.

1020 Cordova St. East Vancouver BC V6A 4A3 Canada
 Phone (604) 253-3158 Fax (604) 253-1716

www.acmelab.com

Client: **Keefe, Ralph R.**
 Box 201
 Francois Lake BC V0J 1R0 Canada

Project: None Given
 Report Date: October 08, 2009

Page: 1 of 1 Part 1

QUALITY CONTROL REPORT

VAN09004270.1

Method	WGHT	1F15	1F15	1F15	1F15	1F15	1F15	1F15	1F15	1F15	1F15	1F15	1F15	1F15	1F15	1F15	1F15	1F15	1F15	1F15	1F15
Analyte	Wgt	Mo	Cu	Pb	Zn	Ag	Ni	Co	Mn	Fe	As	U	Au	Th	Sr	Cd	Sb	Bi	V	Ca	
Unit	kg	ppm	ppm	ppm	ppm	ppb	ppm	ppm	ppm	%	ppm	ppm	ppb	ppm	ppm	ppm	ppm	ppm	ppm	%	
MDL	0.01	0.01	0.01	0.01	0.1	2	0.1	0.1	1	0.01	0.1	0.1	0.2	0.1	0.5	0.01	0.02	0.02	2	0.01	
Pulp Duplicates																					
K-12	Rock	0.52	0.13	91.17	1.86	39.4	58	35.1	18.9	1589	4.67	0.6	<0.1	1.1	<0.1	85.0	0.21	0.06	0.03	96	11.87
REP K-12	QC		0.12	91.29	1.85	38.6	55	34.8	18.4	1576	4.66	0.5	<0.1	1.0	<0.1	85.2	0.22	0.05	0.03	95	11.76
Reference Materials																					
STD DS7	Standard		21.13	122.9	77.28	404.1	788	57.3	10.0	652	2.51	52.0	5.6	63.8	5.1	84.3	6.97	6.82	5.12	86	1.05
STD OXH55	Standard																				
STD OXK69	Standard																				
STD DS7 Expected			20.5	109	70.6	411	890	56	9.7	627	2.39	48.2	4.9	70	4.4	68.7	6.38	4.6	4.51	84	0.93
STD OXH55 Expected																					
STD OXK69 Expected																					
BLK	Blank		<0.01	<0.01	<0.01	<0.1	<2	<0.1	<0.1	<1	<0.01	<0.1	<0.1	<0.2	<0.1	<0.5	<0.01	<0.02	<0.02	<2	<0.01
BLK	Blank																				
BLK	Blank																				
Prep Wash																					
G1	Prep Blank	<0.01	0.39	3.31	4.64	49.0	13	3.9	4.5	627	2.04	0.4	3.5	1.1	8.2	76.2	0.04	0.08	0.17	40	0.61
G1	Prep Blank	<0.01	0.24	2.94	4.67	49.1	12	3.2	4.3	604	1.94	2.0	3.4	<0.2	7.2	70.6	0.03	0.11	0.26	38	0.57

This report supersedes all previous preliminary and final reports with this file number dated prior to the date on this certificate. Signature indicates final approval; preliminary reports are unsigned and should be used for reference only.



Acme Analytical Laboratories (Vancouver) Ltd.

1020 Cordova St. East Vancouver BC V6A 4A3 Canada
 Phone (604) 253-3158 Fax (604) 253-1716

www.acmelab.com

Client: **Keefe, Ralph R.**
 Box 201
 Francois Lake BC V0J 1R0 Canada

Project: None Given
 Report Date: October 08, 2009

Page: 1 of 1 Part 2

QUALITY CONTROL REPORT

VAN09004270.1

Method		1F15	1F15	1F15	1F15	1F15	1F15	1F15	1F15	1F15	1F15	1F15	1F15	1F15	1F15	1F15	1F15	1F15	1F15	G6
Analyte		P	La	Cr	Mg	Ba	Tl	B	Al	Na	K	W	Sc	Ti	S	Hg	Se	Te	Ga	Au
Unit		%	ppm	ppm	%	ppm	%	ppm	%	%	%	ppm	ppm	ppm	%	ppb	ppm	ppm	ppm	gm/mt
MDL		0.001	0.5	0.5	0.01	0.5	0.001	1	0.01	0.001	0.01	0.1	0.1	0.02	0.02	5	0.1	0.02	0.1	0.01
Pulp Duplicates																				
K-12	Rock	0.033	2.3	33.0	1.55	46.0	0.106	2	2.07	0.002	0.04	<0.1	14.4	<0.02	<0.02	12	0.4	<0.02	5.5	
REP K-12	QC	0.033	2.4	32.4	1.55	44.8	0.101	1	2.05	0.002	0.04	<0.1	14.2	<0.02	<0.02	13	0.3	<0.02	5.4	
Reference Materials																				
STD DS7	Standard	0.079	16.5	197.5	1.10	419.5	0.145	39	1.15	0.107	0.45	3.6	3.0	4.17	0.20	159	3.7	1.04	4.9	
STD OXH55	Standard																			1.15
STD OXK69	Standard																			3.55
STD DS7 Expected		0.08	11.7	179	1.05	370.3	0.124	38.6	0.959	0.089	0.44	3.4	2.5	4.19	0.19	200	3.5	1.08	4.6	
STD OXH55 Expected																				1.282
STD OXK69 Expected																				3.583
BLK	Blank	<0.001	<0.5	<0.5	<0.01	<0.5	<0.001	<1	<0.01	<0.001	<0.01	<0.1	<0.1	<0.02	<0.02	<5	<0.1	<0.02	<0.1	
BLK	Blank																			<0.01
BLK	Blank																			<0.01
Prep Wash																				
G1	Prep Blank	0.094	17.3	13.9	0.55	204.3	0.158	2	1.14	0.134	0.54	<0.1	2.9	0.37	<0.02	6	0.2	<0.02	5.5	
G1	Prep Blank	0.088	16.0	12.1	0.53	196.1	0.152	2	1.06	0.111	0.54	<0.1	2.8	0.34	<0.02	<5	0.2	<0.02	5.0	

This report supersedes all previous preliminary and final reports with this file number dated prior to the date on this certificate. Signature indicates final approval; preliminary reports are unsigned and should be used for reference only.

Nines Creek Target Evaluation Project
Whitehorse Mining Division

NTS 115G02, 07

Latitude 61° 10' N
Longitude 138° 44' W

Location

The Nines Creek project area lies on the south side of Kluane Lake in the Kluane Game Sanctuary. The centre of the area lies approximately 25 km SE of the community of Burwash Landing Yukon on mapsheets 115G02 and 115G07.

Access

Access into the area would be by 4wd truck and ATV on existing trails from the Alaska Highway and then by foot. The western regions would be accessed by helicopter based out of Haines Junction.

Project description

Placer gold is the commodity sought in the present program. The geology in the area is as follows:

NW1: WRANGELL LAVAS

rusty red-brown, phyric and non-phyric basaltic andesite flows (minor pillow lava), interbedded with felsic tuff, volcanic sandstone and conglomerate; acid pyroclastics related to intra-Wrangell intrusions; thin basaltic andesite and andesite flows (**Wrangell Lavas**)

MW: WRANGELL SUITE

fine to medium grained, hornblende +/- biotite granodiorite and porphyritic (K-feldspar) hornblende granodiorite; medium grained, uniform biotite diorite and pyroxene gabbro; subvolcanic hornblende +/- biotite rhyolite, rhyodacite, dacite, and trachyte (**Wrangell Suite**)

CPS1: SKOLAI

volcanics succeeded upward by clastic strata, tuff, breccia, argillite, agglomerate, augite-phyric basaltic to andesitic flows (Station Cr. Fm); succeeded by thin-bedded argillite, siltstone, minor greywacke and conglomerate and local thin basaltic flows, breccia and tuff (Hasen Cr. Fm) (**Skolai Gp., Station Creek and Hasen Creek**)

JKD1: DEZADEASH

interbedded light to dark buff-grey lithic greywacke, sandstone, siltstone, thin dark grey shale, argillite, phyllite and conglomerate; rare tuff (**Dezadeash**)

uTrC: CHITISTONE

thin interbedded light to dark grey argillaceous limestone and dark grey argillite; massive light grey limestone, limestone breccia and darker grey, well-bedded limestone; white to creamy-white gypsum and anhydrite (**McCarthy, Chitistone and Nizina limestones**)

uTrN: NICOLAI

amygdaloidal basaltic and andesitic flows, with local tuff, breccia, shale and thin-bedded bioclastic limestone; volcanic breccia, pillow lava and conglomerate at

base; locally includes dark grey phyllite and minor thin grey limestone of Middle Triassic (**Nicolai Greenstone**)

PTrK1: KLUANE ULTRAMAFIC SUITE

medium grey-green, massive, medium grained, pyroxene gabbro and greenstone sills; sheeny black peridotite, rare dunite (**Kluane-type Mafic-Ultramafics; Squaw Datasaka Ranges Gabbro-Diabase Sills**)

d) Reason and rationale for project.

In 2008, the applicant and Ken Galambos spent approximately 3 weeks evaluating the placer potential of Nines Creek. During the time spent on the property it was possible to examine the many float boulders and outcrops in the immediate creek area. It was recognized that there existed potential for a hard rock source for the placer gold that was present in the creek. During the exploration program, one bedrock grab sample returned a value of approximately 9.5g/t Au and 35% Fe from massive hematite/magnetite located within the 5 mile lease area. As well, flakes of placer gold measuring 3mm across were collected near bedrock on the side of the valley immediately below the 5-mile lease registered in the name of the applicant (personal communication Ken Galambos).

e) Initial exploration on the placer lease will involve a magnetic survey in efforts to locate concentrations of heavy minerals including magnetite which may indicate possible concentrations of placer gold. Surveys will be conducted using 5m stations located on lines spaced 25m apart. Approximately 20 line km of survey will be conducted over the bottom half of the lease. Follow-up hand (and possibly back hoe) test pitting will be conducted where possible on any anomalies found.

f) An assessment report including full disclosure of results obtained would be provided to the YMIP manager and to the appropriate Mining Recorder for assessment credit towards any claims staked during the exploration program. This report would include:

For evaluation and prospecting surveys: a summary of all previous relevant investigation; details of surface evaluation; a description of the methods of sampling employed and the methods of analyzing and assaying; tabulated results of all analyses and assays; and conclusions and recommendations shall be submitted.

For geological mapping: a table of formations; detailed geological information concerning rock types, structures, veins or mineralized zones or coal seams occurring on the claims or leases; an interpretation of the geological observations made; and conclusions and recommendations shall be submitted.

For geophysical surveys: a description of the methods of survey and equipment used; dates of survey; number of stations established; kilometers of line surveyed; copies of geophysical readings or profiles; pertinent calculations; maps showing the data in graphic form; station (GPS) location and survey data in spreadsheet

format; an interpretation of the data collected which would include references to the available geology; and conclusions and recommendations shall be submitted. .

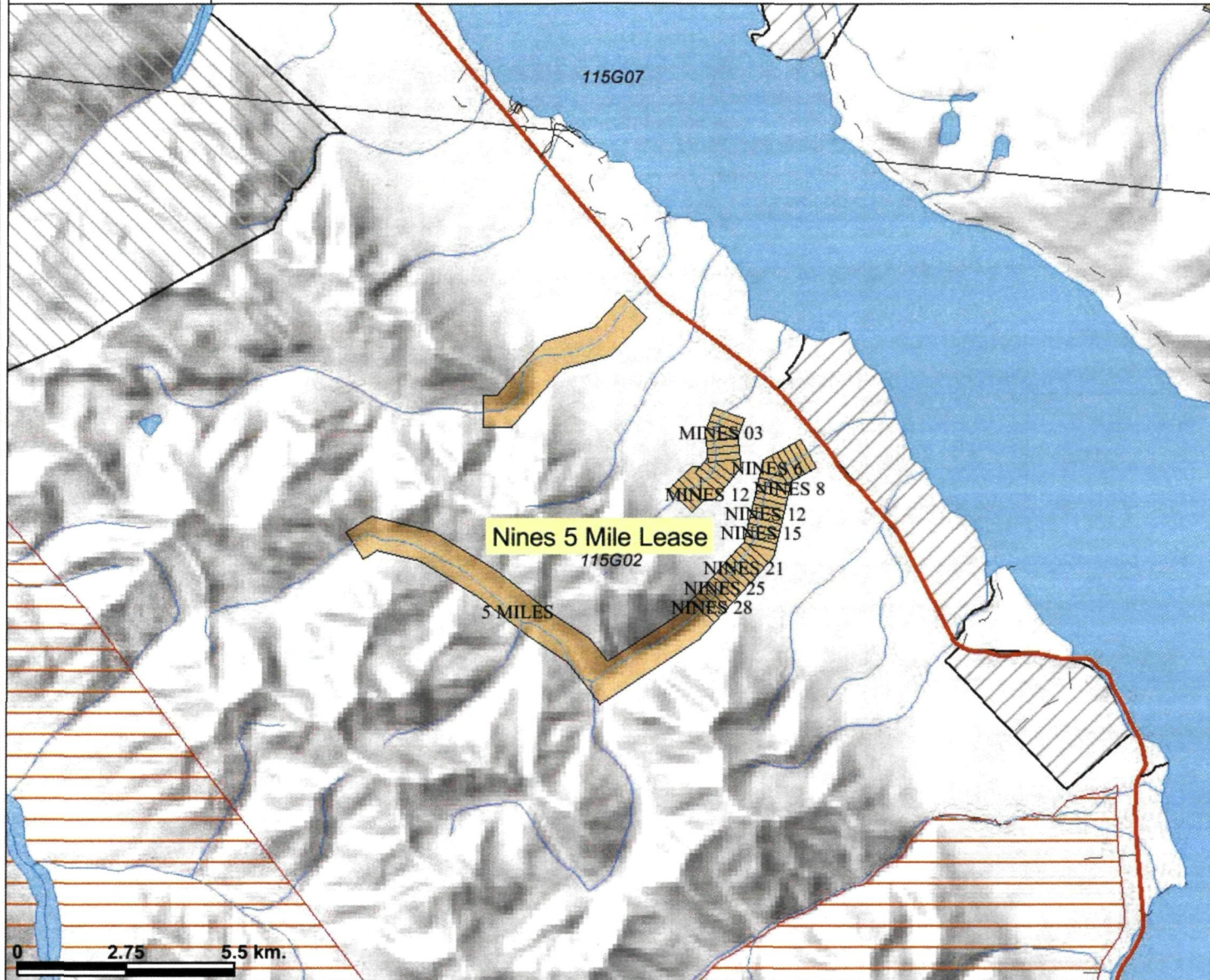
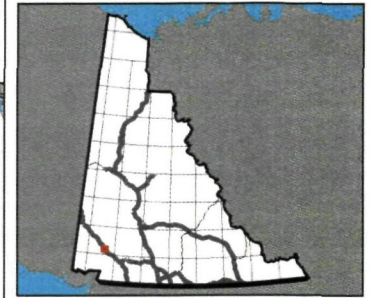
For analytical results: the total number of samples collected; sample location; description; analytical methods used and if a field analytical method is used for determining the metal content, a description of the method; metals determined and concentration units and the name of the commercial lab. Assay results shall be accompanied by assay or analytical certificates (hard copies and electronic copies in spreadsheet format) and plans or sections or both showing sample locations, assay results and the sample dimensions, and indicating the type of grab, chip, panel, channel, drill core or other type of samples taken will be submitted.

For trenching: dates of the work carried out; names of all persons who performed the work; the equipment used; an accurate plan showing the locations of trenches or other surface workings relative to the local topography and claim or lease boundaries; the dimensions of the workings and the volume of material excavated; descriptions of the materials excavated; assays or other analytical results obtained from samples or specimens taken from the workings; and photographs of the trenches prior to backfilling; will be submitted.

g) Estimate of budget
See attached.

h) List of partners applying for YMIP
None

Nines 5 Mile Lease



Legend

- Yukon Border - Surveyed Borders (1M)
- AB
- International
- BC
- NT
- Parks and Special Management Areas 50K
- Y
- N
- Placer Claims²**
- Active
- Expired
- Unsurveyed First Nation Settlement Land
- Surveyed Settlement Lands**
- A
- A/D
- B
- B/D
- FS
- FS/D
- Surface and Subsurface Rights**
- Surface Rights
- Fee Simple
- Uncategorised
- Shaded relief (90m)

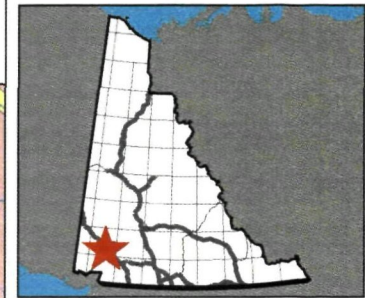
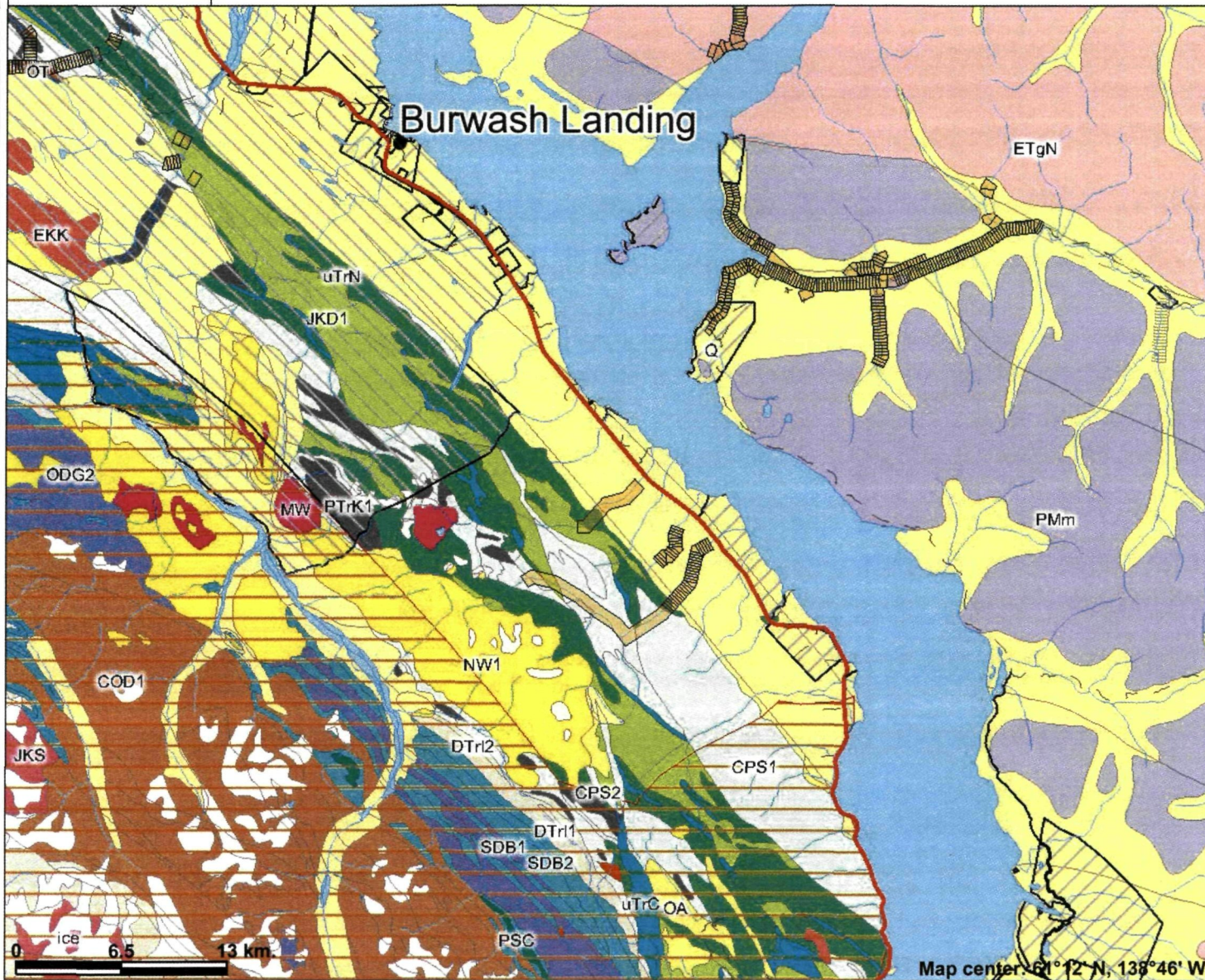
N

Scale: 1:153,120

0 2.75 5.5 km.

This map is a user generated static output from an Internet mapping site and is for general reference only. Data layers that appear on this map may or may not be accurate, current, or otherwise reliable. THIS MAP IS NOT TO BE USED FOR NAVIGATION.
Date Printed: 25-Mar-2009 2:04:52 PM

Nines Regional geology



Legend

- Yukon Border - Surveyed Borders (1M)
 - AB International
 - BC
 - NT
 - Placer Claims**
 - Active
 - Expired
 - Land and Sea**
 - Ocean
 - Yukon
 - Other
 - Parks and Special Management Areas**
 - Y
 - N
 - Surveyed Settlement Lands**
 - Surface and Subsurface Rights
 - Surface Rights
 - Fee Simple
 - Uncategorised
 - Bedrock Geology - Regional Unit (250K)**
 - CDB1
 - CDB2
 - CDB3
 - CDR
 - CDR1
 - CDR2
 - CDR3
 - CDR4
 - CDB5
- Map center: 61° 12' N, 138° 46' W
- Scale: 1:373,467

This map is a user generated static output from an Internet mapping site and is for general reference only. Data layers that appear on this map may or may not be accurate, current, or otherwise reliable. THIS MAP IS NOT TO BE USED FOR NAVIGATION.

Total Magnetic Field Survey
on
Placer Prospecting Lease IW00266
Nines Creek, Yukon
Registered Owner: Ralph Keefe

Whitehorse Mining District, NTS: 115 G/02
Latitude: 61° 06' 50", Longitude: 138° 44' 00"
Dates Worked: August 22 – 28, 2009

By:

Robert Stirling
12 Mossberry Lane
Whitehorse, Yukon Y1A 5W4
Tel: 867-633-3829

Dated: September 09, 2009

TABLE OF CONTENTS

1.0 Summary and Introduction	3
2.0 Property Description and Location	3
3.0 Accessibility and Infrastructure	4
4.0 History	4
5.0 Physiography and Vegetation	4
6.0 Geological Setting	4
7.0 Geophysical Survey	6
7.1 Layout of Survey Grid	6
7.2 Survey Methods and Equipment	6
8.0 Interpretation and Conclusions	7
9.0 Recommendations	7

FIGURES (following page 3)

- Figure 1: Location Map – Yukon
- Figure 2: Location Map – Prospecting Lease
- Figure 3: Total Magnetic Field Survey – Above Canyon
- Figure 4: Total Magnetic Field Survey – Below Canyon
- Figure 5: Total Magnetic Field Survey – Profile of Lower Canyon

APPENDICES

- Appendix 1: Statement of Costs
- Appendix 2: Log of Work
- Appendix 3: Statement of Qualifications
- Appendix 4: Raw and Corrected Survey Data

Total Magnetic Field Survey on Prospecting Lease IW00266

1.0 Summary and Introduction

A 5 mile placer prospecting lease was staked on Nines Creek in September 2008 by Ralph Keefe, P.O. Box 201, Francois Lake, BC V0J 1R0. In 2008 Ralph Keefe and Ken Galambos spent 3 weeks evaluating the placer potential of Nines Creek.

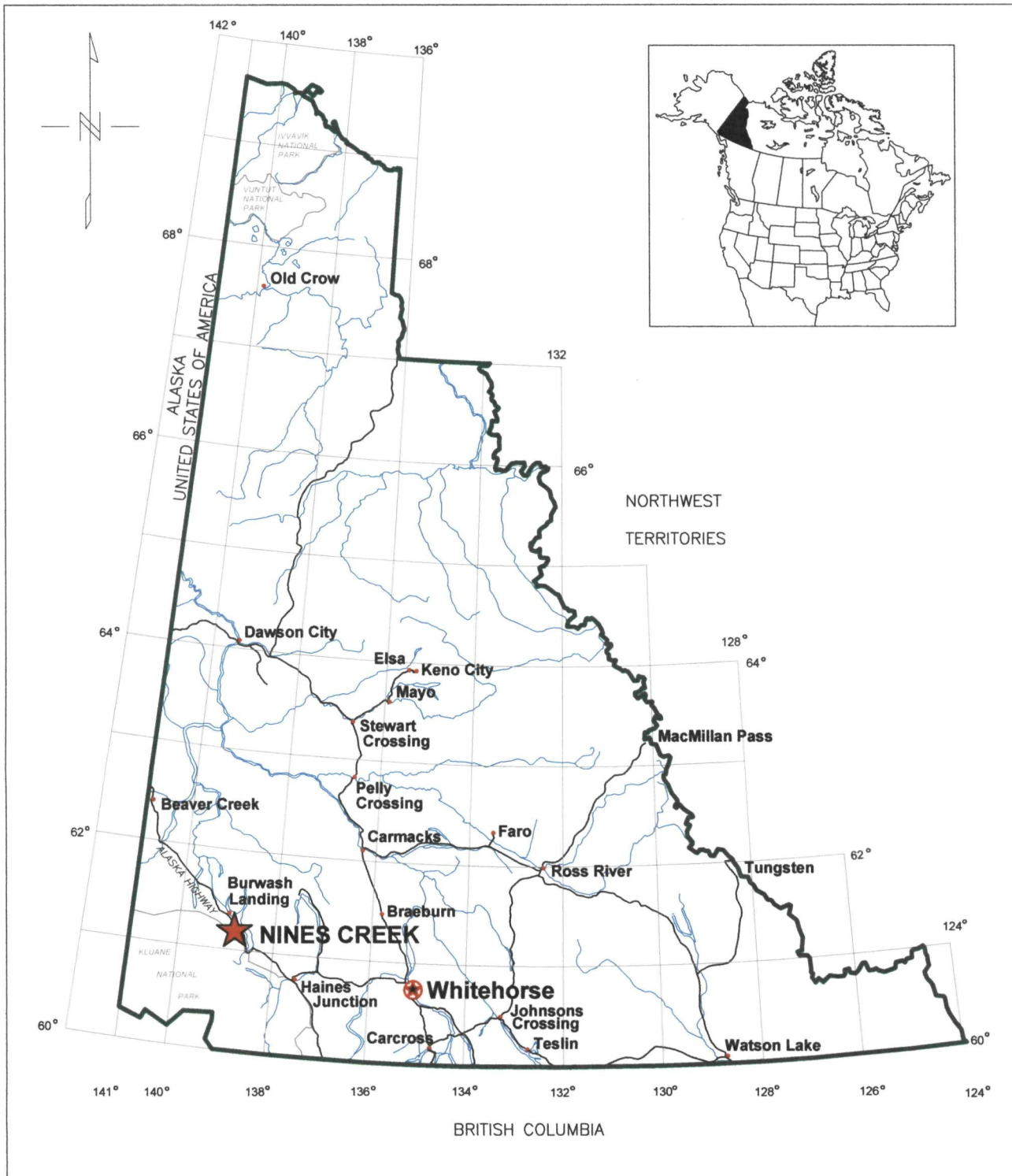
The purpose of the total field magnetic survey was to locate areas of magnetite concentration. Gold and heavy minerals are often associated with magnetite deposition.

2.0 Property Description and Location

The 5 mile prospecting lease is located in the Whitehorse Mining District, N.T.S. 115 G/02. The center of the area surveyed is located at latitude: 61° 06' 50", longitude: 138° 44' 00".

The lease is in good standing and ownership is as follows.

Grant No.	Type	Owner	Recording Date	Expiry Date	NTS
IW00266	Prospecting Lease	Ralph Keefe - 100%	2008-09-30	2009-09-30	115G02

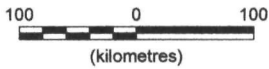


RALPH KEEFE

**NINES CREEK PLACER LEASE IW00266
LOCATION MAP
FIGURE 1**

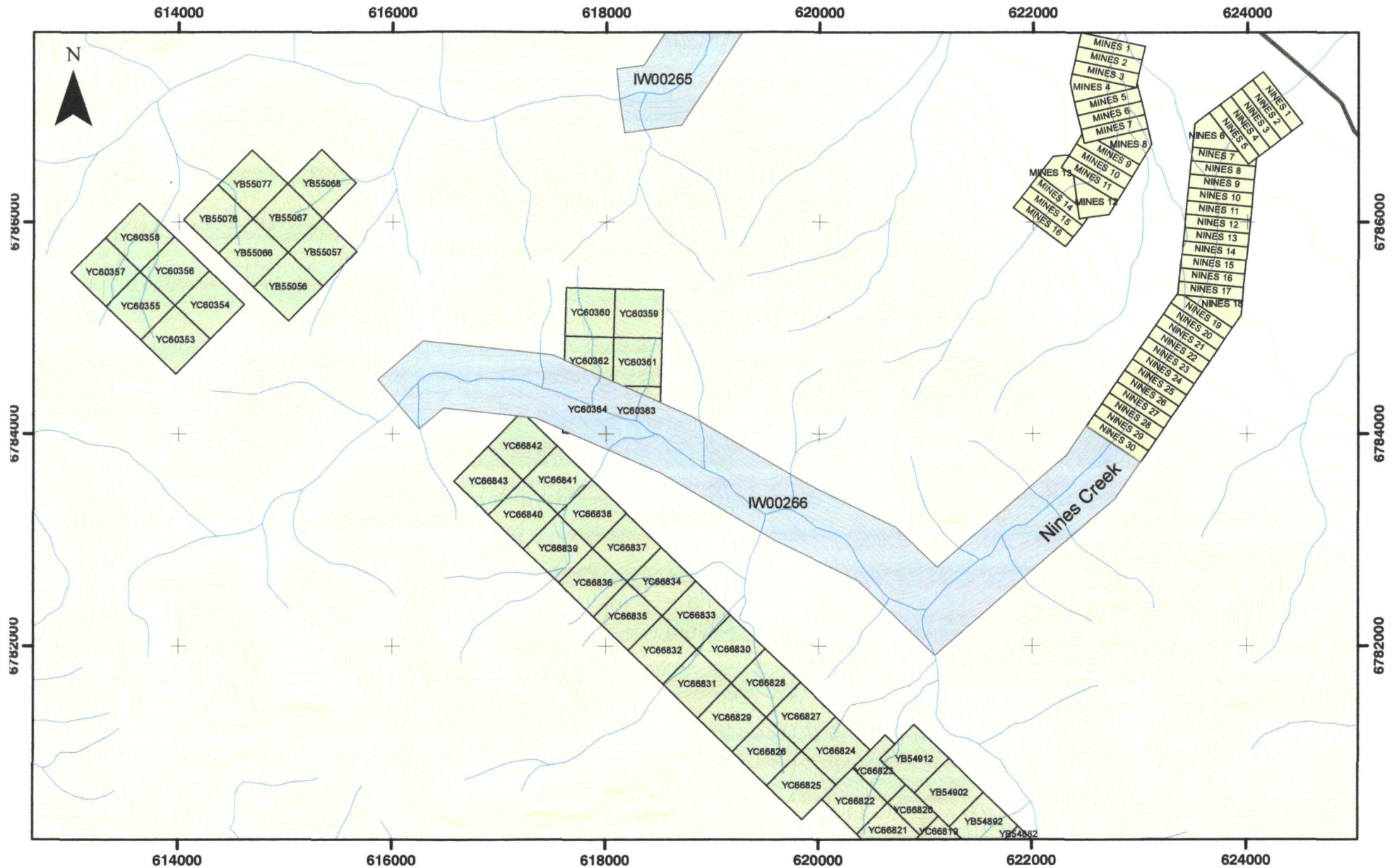
NTS: 115 G/02
Datum: N/A
Job: 2009-RK-01

Mining District: Whitehorse
Projection: N/A
Date: 05 Sept 09



Stewart Basin Exploration

Prospecting Lease Location Map



0 500 1,000 2,000 3,000 4,000 5,000 Metres

1:50,000

Legend

- Placer Prospecting Lease
- Placer Claim
- Quartz Claim**
- Active

NTS: 115 G02
UTM NAD 83 Zone 7N

Figure 2

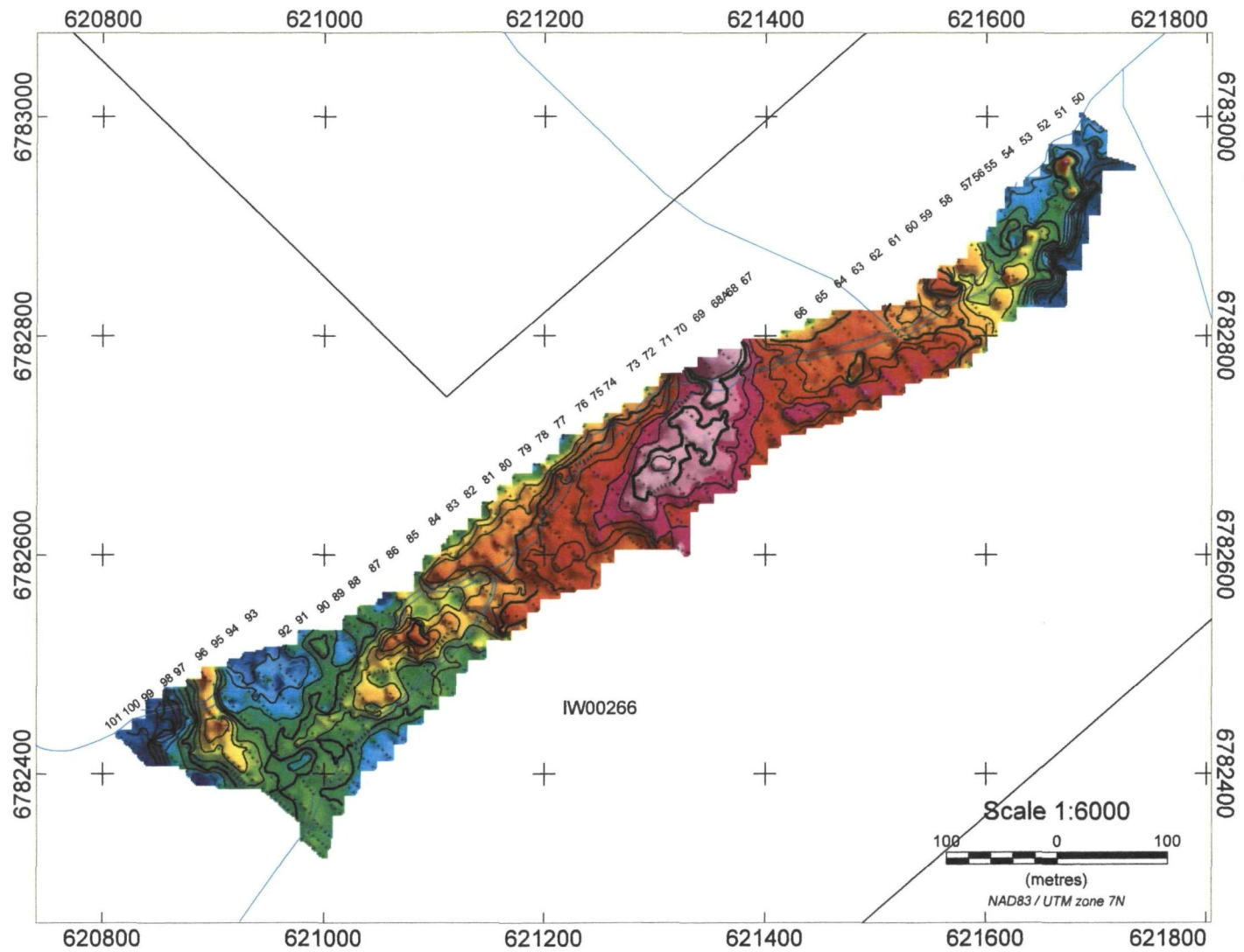
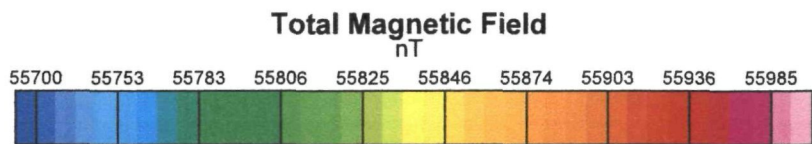


Figure 3



Ralph Keefe
5 Mile Placer Lease IW00266, Nines Creek, Yukon Total Magnetic Field Survey - Above Canyon
115 G/02 - September 09, 2009
Stewart Basin Exploration

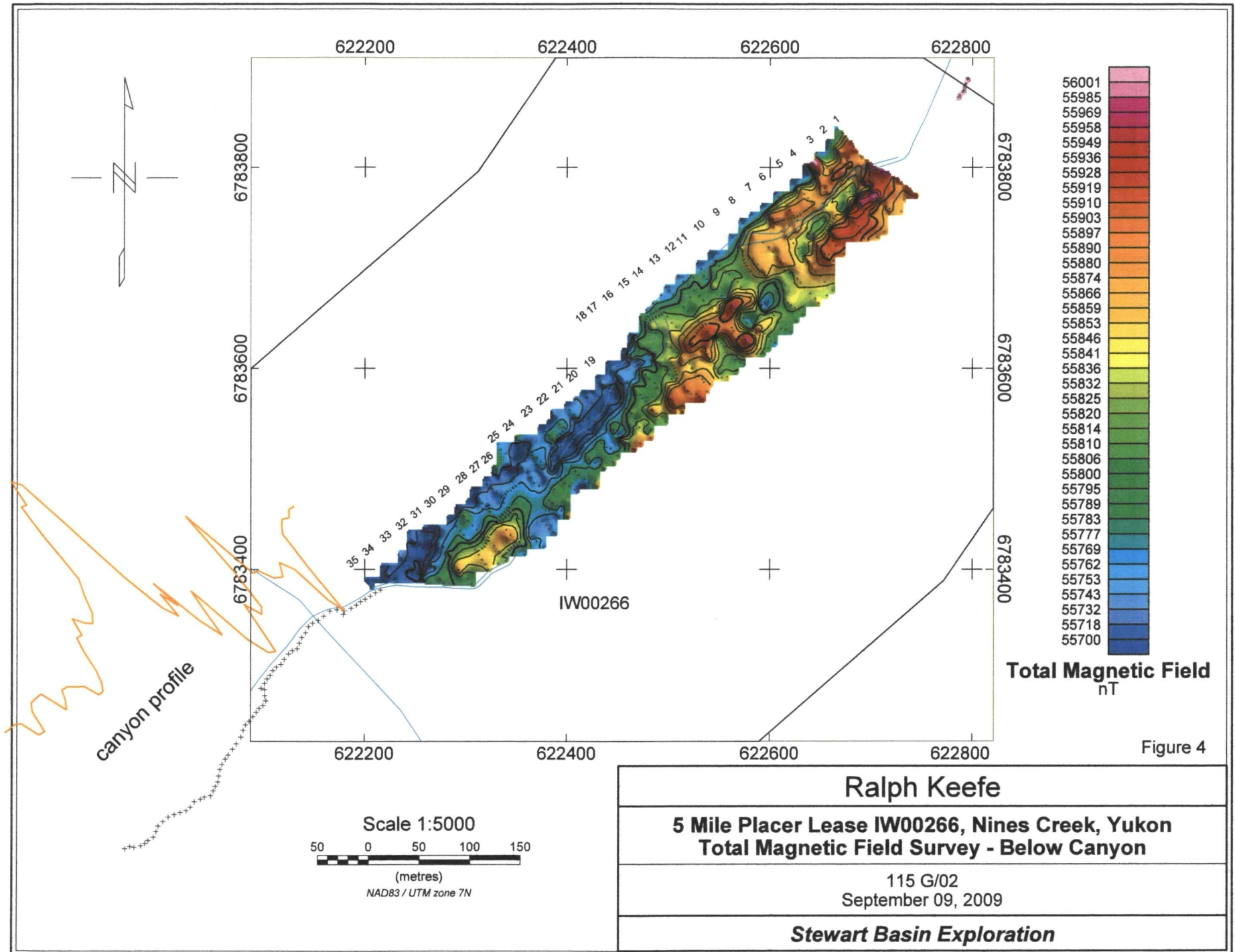
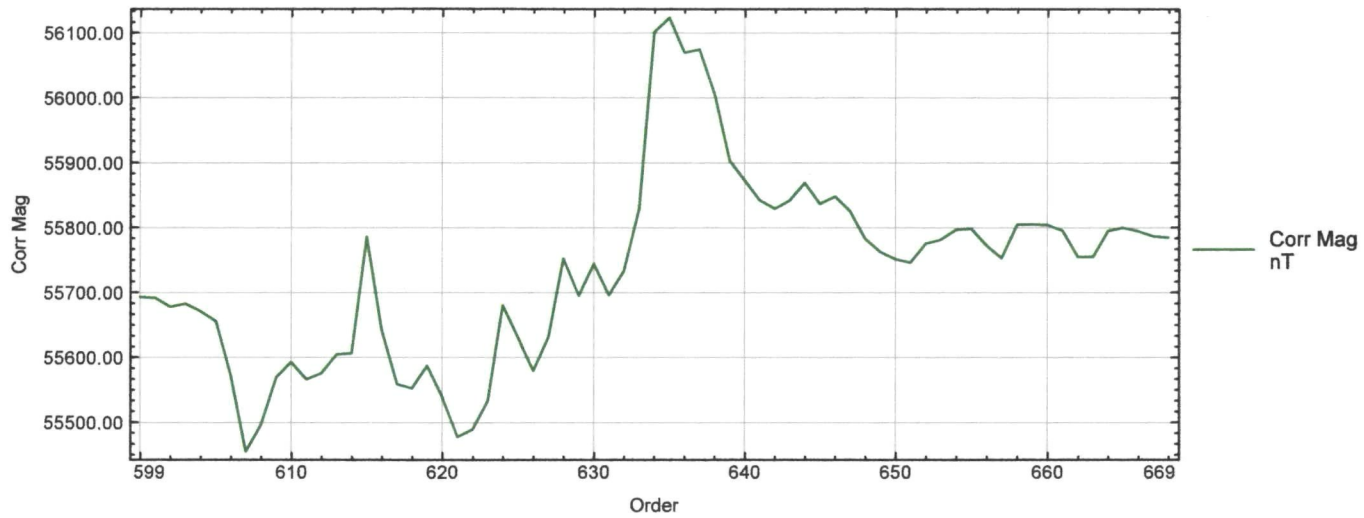


Figure 4

Ralph Keefe
5 Mile Placer Lease IW00266, Nines Creek, Yukon Total Magnetic Field Survey - Below Canyon
115 G/02 September 09, 2009
Stewart Basin Exploration

Nines Creek, Total Magnetic Field Profile through lower canyon, looking south



Stewart Basin Exploration
database: R Keefe\Geosoft\canyon profile.gdb

Figure 5
2009/09/09

3.0 Accessibility and Infrastructure

The lease is located on Nines Creek approximately 270 km northwest of Whitehorse and 8 km southeast of Destruction Bay, Yukon. Nines Creek flows to the northeast into Kluane Lake.

Access is via the Alaska Highway and a 2 wheel drive gravel road for a distance of 3.5 km where it is washed out. Beyond this access is by quad to the base of the canyon, with creek crossings. Access is by foot or helicopter beyond this point.

4.0 History

The history of the area is unknown. There was no evidence of placer mining in the area of the survey. Several older quartz claim posts and one placer post was found.

5.0 Physiography and Vegetation

The area of the survey is located in the St. Elias Mountains to the south of Kluane Lake in the Kluane Game Sanctuary at an elevation of 1,100 metres. Bedrock outcrop was noted in the survey area and in the canyons. Spruce and willow are moderately dense on both limits of the creek. The active creek area is open and rocky with vegetation of thinly scattered willow.

The width of active creek area above the canyon is from 80 to 210 metres. The width of active creek area below the canyon is from 50 to 85 metres.

The gravels in the survey area appear to be thawed.

Evidence of grizzly bear and sheep was noted.

6.0 Geological Setting

The geology in the area is as follows.

NW1: WRANGELL LAVAS

rusty red-brown, phyric and non-phyric basaltic andesite flows (minor pillow lava), interbedded with felsic tuff, volcanic sandstone and conglomerate; acid pyroclastics related to intra-Wrangell intrusions; thin basaltic andesite and andesite flows (**Wrangell Lavas**)

MW: WRANGELL SUITE

fine to medium grained, hornblende +/- biotite granodiorite and porphyritic (K-feldspar) hornblende granodiorite; medium grained, uniform biotite diorite and pyroxene gabbro; subvolcanic hornblende +/- biotite rhyolite, rhyodacite, dacite, and trachyte (**Wrangell Suite**)

CPS1: SKOLAI

volcanics succeeded upward by clastic strata, tuff, breccia, argillite, agglomerate, augite-phyric basaltic to andesitic flows (Station Cr. Fm); succeeded by thin-bedded argillite, siltstone, minor greywacke and conglomerate and local thin basaltic flows, breccia and tuff (Hasen Cr. Fm) (**Skolai Gp., Station Creek and Hasen Creek**)

JKD1: DEZADEASH

interbedded light to dark buff-grey lithic greywacke, sandstone, siltstone, thin dark grey shale, argillite, phyllite and conglomerate; rare tuff (**Dezadeash**)

uTrC: CHITISTONE

thin interbedded light to dark grey argillaceous limestone and dark grey argillite; massive light grey limestone, limestone breccia and darker grey, well-bedded limestone; white to creamy-white gypsum and anhydrite (**McCarthy, Chitistone and Nizina limestones**)

uTrN: NICOLAI

amygdaloidal basaltic and andesitic flows, with local tuff, breccia, shale and thin-bedded bioclastic limestone; volcanic breccia, pillow lava and conglomerate at base; locally includes dark grey phyllite and minor thin grey limestone of Middle Triassic (**Nicolai Greenstone**)

PTrK1: KLUANE ULTRAMAFIC SUITE

medium grey-green, massive, medium grained, pyroxene gabbro and greenstone sills; sheeny black peridotite, rare dunite (**Kluane-type Mafic-Ultramafics; Squaw Datlasaka Ranges Gabbro-Diabase Sills**)

How many lines?

7.0 Geophysical Survey

A closely spaced total magnetic field survey was performed for the purpose of locating areas of magnetite concentration. Magnetite and heavy mineral concentration is often accompanied by gold. The survey was located in two areas, above and below a section of the creek that passes through a canyon. The canyon exposes bedrock at various locations.

7.1 Layout of Survey Grid

A grid was located using an azimuth of 142 degrees for the grid lines. The compass declination was 23.5 degrees east. The base line was marked with pickets and end of lines with pickets and/or flagging. Line was cut with hand tools and flagged to the extent that one could see from point to point or be able to walk through the bush without too many problems. In open areas line was followed by sighting on the baseline picket or person standing at the picket.

The station spacing was 5 metres and the line spacing 20 metres.

The upper and lower canyons were not accessible to survey with the grid layout so a profile line was run for the length of the lower canyon. The station spacing was 5 metres.

7.2 Survey Methods and Equipment

A GEM Systems GSM 19T proton magnetometer was used for the base station. Base station readings were taken every 3 seconds. A GEM Systems GSM 19 TW proton magnetometer was used for the mobile unit. Mobile stations were read in immediate mode with interpolation.

The mobile unit was equipped with differential GPS. Real time corrections were made when sufficient data was available. Post processing was disabled. GPS positions were recorded in NAD83 UTM Zone 7N. The magnetometer survey was run by Bob Stirling of Whitehorse, Yukon. Ralph Keefe established the survey grid and reference points and assisted with logistics.

Survey data was downloaded each day to a field computer and corrected for diurnal drift. A datum of 56,000 nT was used. Four stations on the grid were read each day in order to level the data. Based on the readings it was not necessary to level data from day to day. Survey data was corrected with GEMLinkW 4.

Number of stations established: 1,700

Line kilometres surveyed: 8.5 km

The survey data was compiled, checked and edited. Approximately 35 southerly GPS locations were edited due to poor satellite reception. The poor reception was related to multipath errors and higher elevation directly to the south of the grid.

Colour contour maps were produced using a minimum curvature gridding method and a grid cell size of 1.25m (25% of the sample spacing). Geosoft Target was used for gridding and geophysical map production.

8.0 Interpretation and Conclusions

The survey was completed successfully and areas of interest were found.

Anomaly A

A magnetic high anomaly was found above the canyon on lines 61 to 85. Bedrock outcrop was not observed in this area. The left and right limit valley slopes consist of alluvial till and/or glacial outwash and slide rock. Anomaly A may be related to the alluvial environment as the water velocity slows here before entering the canyon. The width of the active channel decreases considerably.

Anomaly B

A moderate to high magnetic anomaly was found below the canyon on lines 1 to 9 and 10 to 15. Bedrock outcrop was not seen in this area. The anomaly on the far right limit is likely related to slide rock or sub-crop as the grid was extended upslope from the edge of the active creek. The anomaly on the mid to left limit may be related to the alluvial environment. Water slows in this area as the extents of the creek valley widen.

A small bench may be present on the right limit lines 1-2 and is coincident with the magnetic high anomaly.

9.0 Recommendations

The depth to bedrock should be determined. Excavator test pits were dug on the claims below the lease in 2008 by the respective claim holders. The size of the excavator is unknown. Bedrock was not reached in any of the test pits. (Pers. communication R. Keefe)

A seismic survey may be suitable for determining the depth to bedrock.

The areas of Anomaly A & B should be followed up with excavator test pits and/or drilling to determine if the anomalies are related to the alluvial environment.

Total Magnetic Field Survey on Prospecting Lease IW00266

Appendix 1

Statement of Costs

Prospecting Lease IW00266

Dates worked: August 22 – 28, 2009

Costs are for R. Stirling unless noted.

<u>Item</u>	<u>Details</u>	<u>Amount and Unit Cost</u>	<u>Total Cost</u>
Geophysical survey	R. Stirling	5 days @ \$400/day	\$2,000.00
Gridding for survey	R. Keefe	5 days @ \$400/day	\$2,000.00
Mob-demob	R. Stirling	1 days @ \$300/day	\$300.00
Transportation	Vehicle	2 days @ \$150/day	\$300.00
Transportation	Trailer	2 days @ \$50/day	\$100.00
Transportation	Quad	5 days @ \$75/day	\$375.00
Transportation	Fuel gas	17.4 l @ 1.069/l	\$18.60
Transportation	Fuel diesel	87.24 l @ 1.029/l	\$89.77
Survey equipment	Proton Magnetometers	4 days @ \$175/day	\$700.00
Report	Process data, maps and report writing	2.0 days @ \$400/day	\$800.00
		TOTAL COST	\$6,683.37

Total Magnetic Field Survey on Prospecting Lease IW00266

Appendix 2

Log of Work: Robert Stirling (RS), 12 Mossberry Lane, Whitehorse, Yukon Y1A 5W4
Ralph Keefe (RK), P.O. Box 201, Francois Lake, BC V0J 1R0

Date	Description
Aug. 22 nd	Mobilize gear with truck and trailer from Whitehorse to Nines Creek. RS
Aug. 23 rd	Locate grid lines on right limit below canyon. RS/RK
Aug. 24 th	Magnetometer survey on right and left limit below lower canyon. Download data. Base station was not started correctly so will have to be redone. RS Locate grid lines for survey. RK
Aug. 25 th	Redo mag on right and left limit grid below lower canyon. Download, level and plot data. RS Locate grid lines for survey. RK
Aug. 26 th	Locate baseline above canyon to fork of creek. RS/RK Magnetometer survey on left limit from the forks to start of the upper canyon. Download and level data. RS Locate grid lines for survey. RK
Aug. 27 th	Magnetometer survey on left and right limits of both forks from line 103 towards upper canyon. RS Locate grid lines for survey. RK
Aug. 28 th	Magnetometer survey on right limit ending at the upper canyon. Demob from Nines Creek to Whitehorse. RS Locate grid lines for survey. RK
Aug. 30 th to Sept. 6 th	Process data, produce maps and write report. RS

Appendix 3

Statement of Qualifications

I, Robert Stirling, with business address of 12 Mossberry Lane, Whitehorse, Yukon Y1A 5W4, do hereby certify that:

1. I have been involved in mining and exploration in the Yukon and Northwest Territories since 1977.
2. I am experienced in performing total magnetic field surveys, processing data and producing contour maps.
3. I have been involved in placer prospecting in the Yukon since 1990.
4. I have produced maps and compiled data for geological reports since 1991.
5. I, Robert Stirling collected the data for this report.
6. I, Robert Stirling have no (0%) interest in the prospecting lease described in this report.

R. Stirling

Robert Stirling

Sept. 9/09 .

Appendix 4

Raw and Corrected Survey Data

Survey data is included in text and spreadsheet format in the digital file.