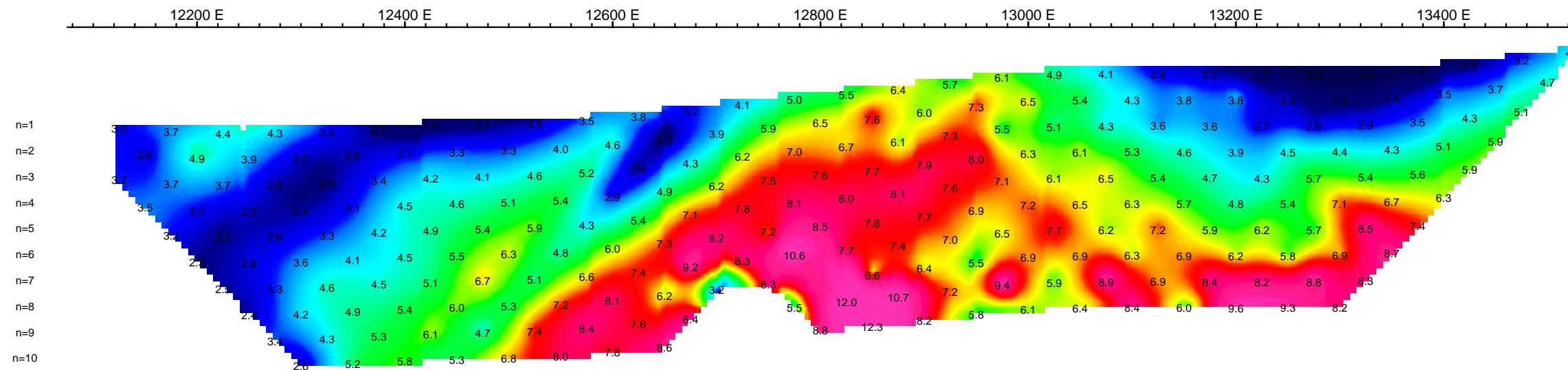
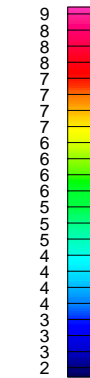


App. Chargeability  
mV/V

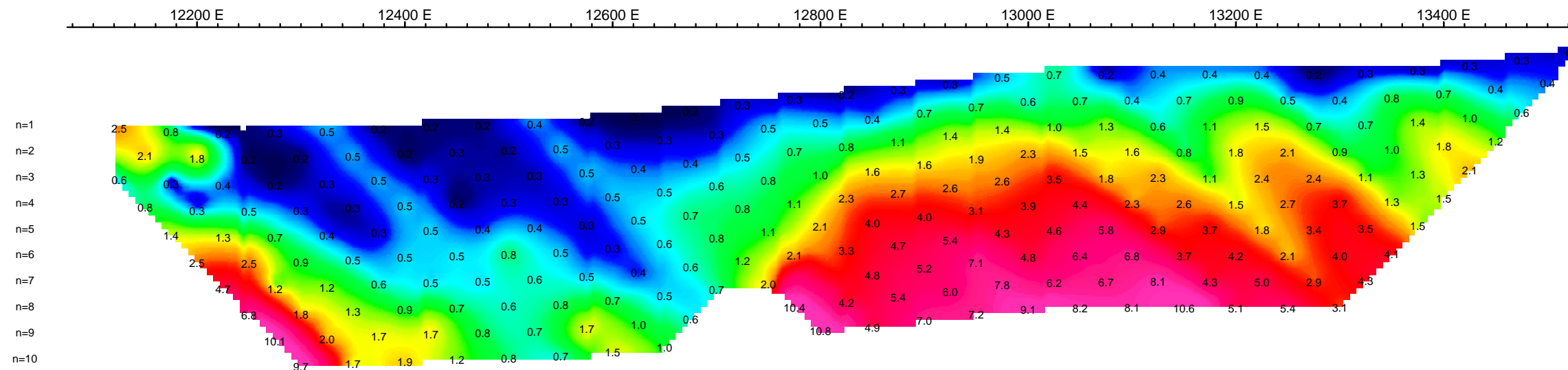


App. Chargeability  
mV/V

n=1  
n=2  
n=3  
n=4  
n=5  
n=6  
n=7  
n=8  
n=9  
n=10



App. Chargeability Err.  
mV/V

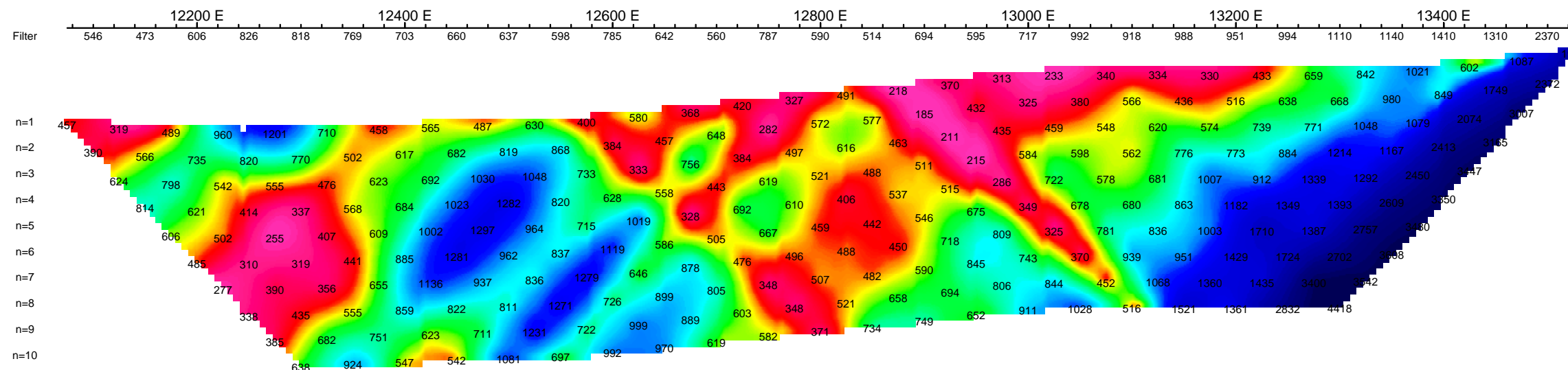


App. Chargeability Err.  
mV/V

n=1  
n=2  
n=3  
n=4  
n=5  
n=6  
n=7  
n=8  
n=9  
n=10

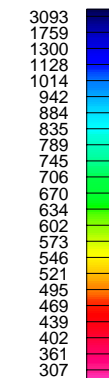


App. Resistivity  
Ohm\*m



App. Resistivity  
Ohm\*m

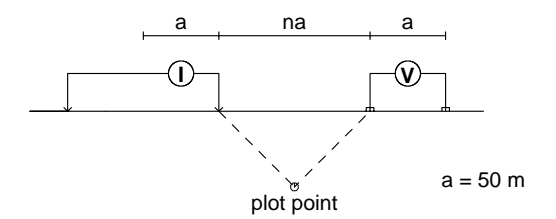
Filter  
n=1  
n=2  
n=3  
n=4  
n=5  
n=6  
n=7  
n=8  
n=9  
n=10



## PSEUDOSECTION PLOTS

12400 N

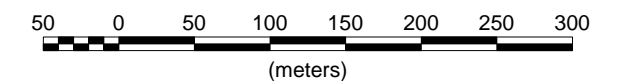
Modified Pole-Dipole Array



Stationary electrode at 12000E (moving W).  
Receiver: Iris ElrecPro  
Transmitter: GDD Tx-II 3.6kW  
Data File: Ice 2009 IP.xyz  
Dates Surveyed : Aug 15, 2009 to Aug 27, 2009

# FIELD

Scale 1:5000



**BC GOLD CORP.**

INDUCED POLARIZATION SURVEY  
ICE PROPERTY  
PSEUDOSECTION PLOTS L12400 N

Mining District: Whitehorse  
Datum: NAD83  
Date: Sept 17, 2009  
NTS: 115/17

GRID: Local  
Proj: UTM Zone 8N  
Job: BCG-9545-YT  
Drawn by: AL

AURORA GEOSCIENCES LTD.