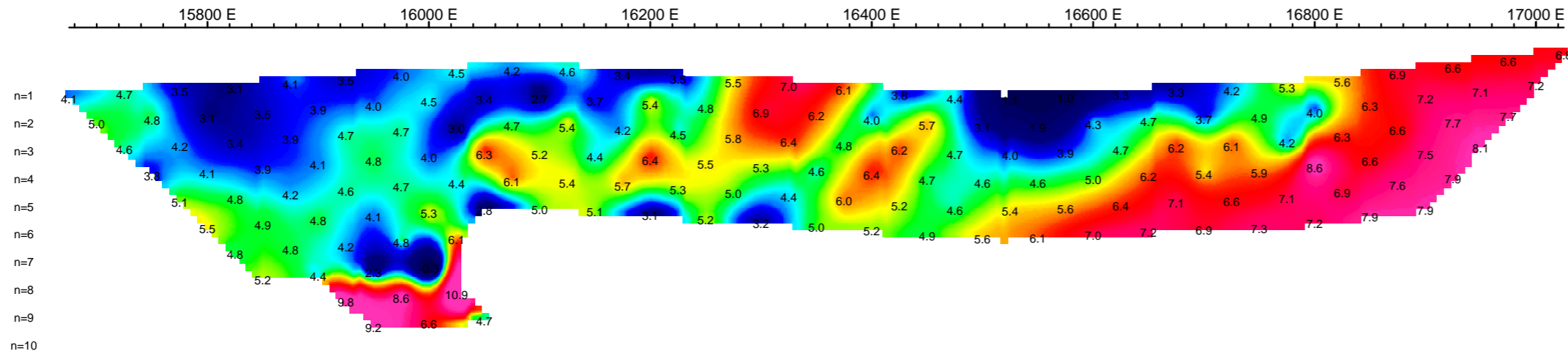


App. Chargeability
mV/V

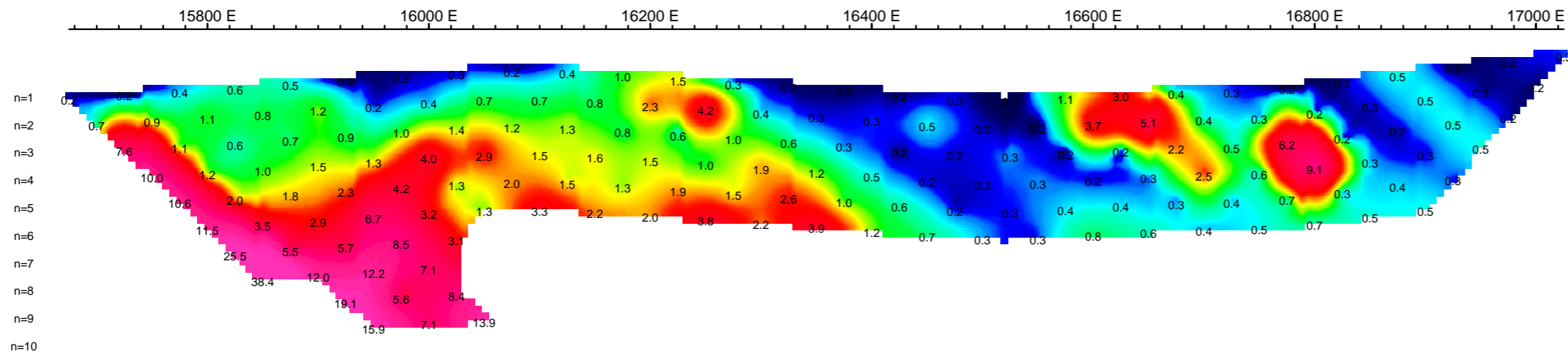


App. Chargeability
mV/V

n=1
n=2
n=3
n=4
n=5
n=6
n=7
n=8
n=9
n=10



App. Chargeability Err.
mV/V

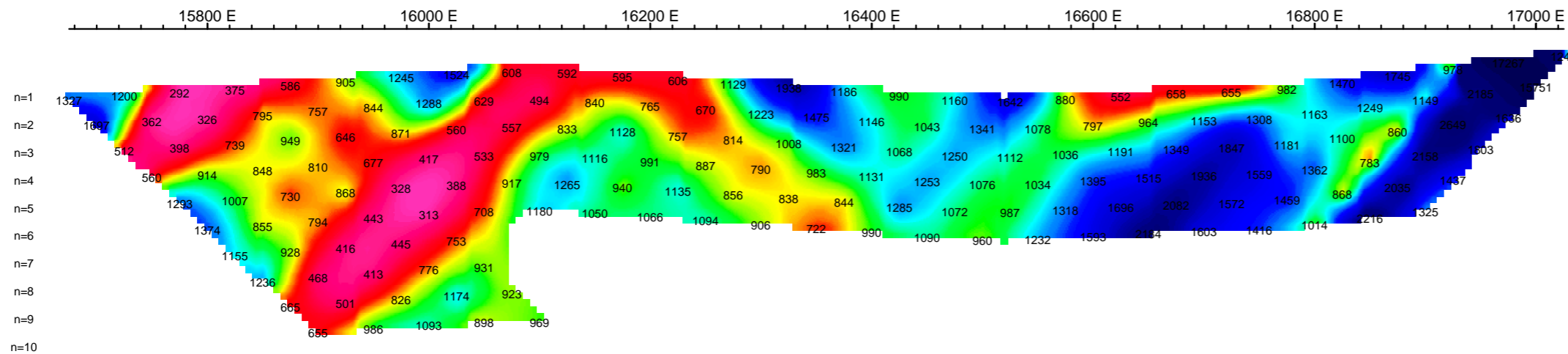


App. Chargeability Err.
mV/V

n=1
n=2
n=3
n=4
n=5
n=6
n=7
n=8
n=9
n=10

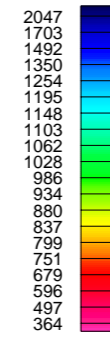


App. Resistivity
Ohm*m

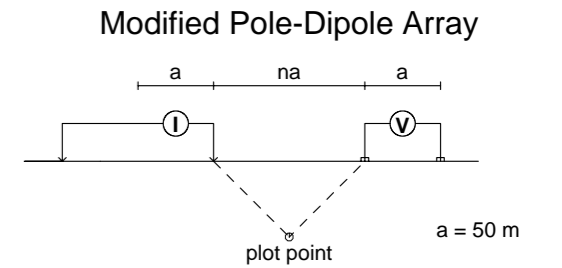


App. Resistivity
Ohm*m

n=1
n=2
n=3
n=4
n=5
n=6
n=7
n=8
n=9
n=10

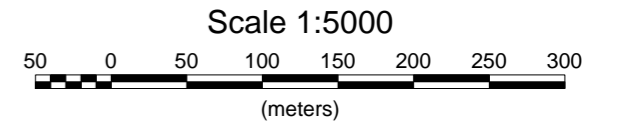


PSEUDOSECTION PLOTS 14600 N



Stationary electrode at 15600E (moving W).
Receiver: Iris ElrecPro
Transmitter: GDD Tx-II 3.6kW
Data File: NEWS IP.xyz
Dates Surveyed : Aug 29, 2009 to Sept 2, 2009

FIELD



BC GOLD CORP.

INDUCED POLARIZATION SURVEY
NORTHEAST WS PROPERTY
PSEUDOSECTION PLOTS L14600 N

Mining District: Whitehorse
Datum: NAD83
Date: Sept 17, 2009
NTS: 115 I/7

GRID: Local
Proj: UTM Zone 8N
Job: BCG-9545-YT
Drawn by: AL

AURORA GEOSCIENCES LTD.