

**YEIP
2010
-010**

TABLE
OF
CONTENTS

Summary	-	Page 1
YMIP Final Submission Form	-	Pages 2 + 3
Drilling Log	-	Pages 4 to 41
Mine Recorded Placer Drill Log	-	Pages 42 to 57
Map	-	Page 58

FROM:

**DAVID LAURENSEN
BOX 645
DAWSON CITY, YUKON
Y0B 1G0**

PROJECT NAME:

CHIEF GULCH

YMIP NO:

10 - 010

YMIP FINAL SUBMISSION FORM

		Date submitted:	
submit by January 31st to: <i>(winter placer projects may submit at pre-approved date)</i>		YMIP- EMR/ YTG Street address: 102-300 Main Street Mailing address: Box 2703, K-102 Whitehorse, Yt, Y1A 2C6	
		YMIP@gov.yk.ca phone: 867-456-3828 fax: 867-667-3198	
CONTACT INFO		PROJECT INFO	
Name:	DAVID LAURENSEN	YMIP no:	10-010
Address:	Box 645 DAWSON CITY, YT. Y0B1G0	Project name:	CHIEF GULCH
email	davesarahlau@hotmail.com	Project type:	PLACER
Phone:	867-334-3185	Project module:	TARGET EVALUATION
Is the final report enclosed?		<input checked="" type="radio"/> yes	<input checked="" type="checkbox"/> hard copy
		<input type="radio"/> no	<input type="checkbox"/> pdf copy
			<input type="checkbox"/> digital spreadsheet of station location data
Comment:			
PROJECT SUMMARY			
Total project expenditures:		86,308.58	
Number of new claims since March 31st:		none	
Has an option resulted since March 31?		<input checked="" type="radio"/> yes <input type="radio"/> no <input type="radio"/> in negotiation	
Number of calendar field days:		96 days	
Number of person-days of employment:		58 days paid _____ days of unpaid work	
Total no. of samples: _____ rocks _____ silts		_____ soils 38 AUGER other	
Total length/volume of trenching: _____		PLACER SAMPLES	
Total number of line-km of geophysics _____			
Total meters drilled		_____ diamond drill _____ RC drill 1261/4 Auger/percussion drill	
Other products (provide details): _____			
<i>This is not an expense claim form. To request reimbursement of expenses, please submit a separate detailed expense claim form.</i>			
FINANCIAL SUMMARY			
Total daily field allowance		18,300	
Total field air transportation costs (helicopter/plane)		Total contractor costs	
Total truck/ mileage costs		262	
Total wages paid		Total excavating/ heavy equipment costs	
Total light equipment rental costs		38,268	
Other (please specify) _____		Total assay/analyses costs	
Other (please specify) _____		3,783	
		Total reclamation costs	
Total report writing cost		1,000	
Total staking costs			

YMIP no: 10-010
Project Name: Chief Gulch
Project Module: Target Evaluation
Project Type: Placer - Auger Drilling 6"
Map: # 115014e
Claims: P17426 and P10466
Name: David Laurenson
Address: Box 645, Dawson City, Yukon, Y0B 1G0
Phone: 867-334-3185
E-mail: davesarahlau@hotmail.com

Driller: David Laurenson
Samples processed by Sarah Laurenson using a long tom and panning.
All equipment used is owned by David Laurenson.
Total Expenditures - \$ 86,308.58

Summary -

There was very little travelled rock in the area we drilled.. We found no gravel. The rocks were quartz, granite and shale. The holes we drilled along no name creek had two layers of black muck. We found some old timer shafts and three boilers and found gold in each hole in that area. We feel that with all the old timer workings it will be worth while to mine the ground.

A note for the drilling report, I started to use the term garnets to describe the rocks left in the pan and when Daniele visited and saw the rocks I said were garnets she said was pyrite. So where ever I used the term garnets it should be pyrite.

YMIP FINAL SUBMISSION FORM

Your feedback on any aspect of the program:

The Department of Energy, Mines and Resources may verify all statements related to and made on this form, in any previously submitted reports, interim claims and in the Summary or Technical Report which accompanies it.

I certify that;

- 1. I am the person, or the representative of the company or partnership, named in the Application for Funding and in the Contribution Agreement under the Yukon Mining Incentives Program.
- 2. I am a person who is nineteen years of age or older, and I have complied with all the requirements of the said program.
- 3. I hereby apply for the final payment of a contribution under the Yukon Mining Incentives Program (YMIP) and declare the information contained within the Summary or Technical Report and this form to be true and accurate.

Date January 27/2011

Signature of Applicant

[Handwritten Signature]

Name (print)

DAVID LAURENSEN

CHIEF GULCH
DRILL LOG

Hole # 1

GPS - Loc. 07 V 0587747 (+/-) Pictures # 13, 15+16
7081581

10 feet of black muck then hit solid rock. Move drill just back a little.
Total - 10 feet
No Sample



#13



#15



#16

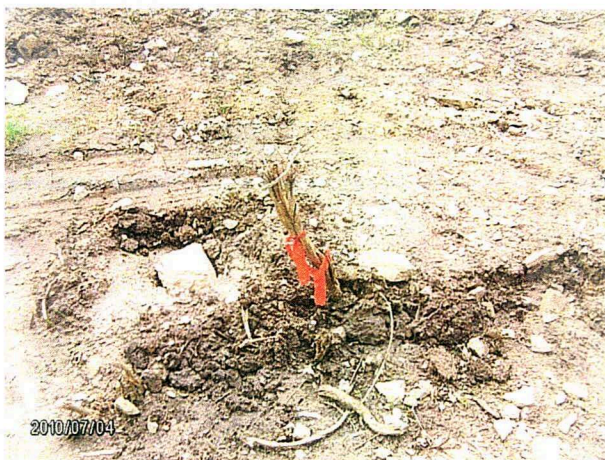
Hole # 2

GPS - Loc. 07 V 0587746
7081590

Pictures # 14,15+16

01 - 12 feet - black muck
12 - 22 feet - brown light material and rock (some quartz).
22 - 35 feet - fine sandy in colour bedrock.
Total - 35 feet

13 pails of sample material
Sample: Some black sand



#14



#15



#16

Hole # 3

Pictures # 17,18,19+20

GPS - Loc. 07 V 0587719
7081579

- 01 - 05 feet - medium size rock
- 05 - 15 feet - small rock, dark brown material
- 15 - 23 feet - small rock and light brown material
- 23 - 31 feet - grey rock
- 31 - 38 feet - small rock and light material
- 38 - 40 feet - grainy silty dry bedrock
- 40 - 44 feet - grainy silty wet bedrock
- Total - 44 feet

15 pails of sample material
Sample: Very little black sand



#17



#18



#19



#20

Hole # 4

Pictures # 17,18,19+20

GPS - Loc. 07 V 0587702
7081396

- 01 - 15 feet - rocks and reddish brown dry overburden
- 15 - 18 feet - brown mud
- 18 - 28 feet - rock, shale and quartz
- 28 - 35 feet - small rocks and grey clay bedrock
- 35 - 40 feet - sandy in colour bedrock

8 pails of sample material

Sample: 1 good speck and small light green rock



#17



#19



#18



#20

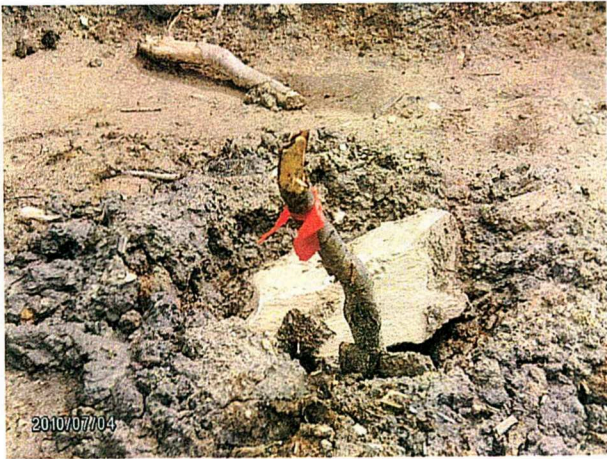
Hole # 5

Pictures # 22 + 23

GPS - Loc. 07 V 0587667
7081506

- 01 - 02 feet - red frozen mud
- 02 - 07 feet - frozen black muck and wood
- 07 - 13 feet - frozen black muck and rock
- 13 - 15 feet - frozen sandy in colour material and rock
- 15 - 23 feet - frozen brown material and rock
- 23 - 25 feet - gummy grey clay bedrock
- Total - 25 feet

5 pails of sample material
Sample: some black sand



#22



#23

Hole # 6

Pictures # 23,24,25

GPS - Loc. 07 V 0587663
7081480

01 - 05 feet - black muck
05 - 12 feet - grainy silty light brown gravel
12 - 25 feet - wet sandy in colour material and some quartz
25 - 36 feet - dry material, rock and quartz
36 - 44 feet - sandy in colour powdery bedrock
Total - 44 feet

13 pails of sample material

Sample: Lots of black sand and garnets, 2 small nuggets + 2 med. colours + 1 speck



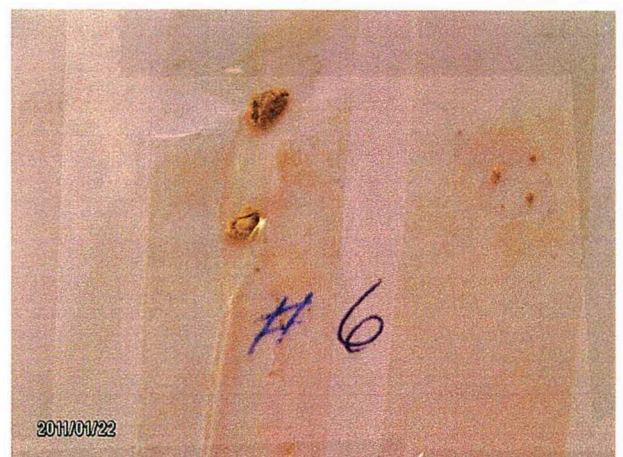
#24



#23



#25



Hole # 7

Picture # 6

GPS - Loc. 07 V 0587778
7081623

- 01 - 05 feet - black muck
- 05 - 16 feet - gravel, dry brown material
- 16 - 26 feet - wet brown material and rock
- 26 - 32 feet - muddy, light brown material and rock
- 32 - 38 feet - water then solid bedrock
- Total - 38 feet

12 pails of sample material
Sample: Little black sand and lots of quartz



#6

Hole # 8

Pictures # 37, 39+40

GPS - Loc. 07 V 0587809
7081651

- 01 - 03 feet - frozen black muck
- 03 - 04 feet - grey frozen material
- 04 - 13 feet - grey dry material and small rocks
- 13 - 20 feet - sandy grey material and rocks
- 20 - 22 feet - steel grey material and rocks
- 22 - 23 feet - frozen lighter grey material + rocks
- 23 - 26 feet - frozen grey material
- 26 - 30 feet - frozen brown material
- 30 - 37 feet - sandy in colour bedrock
- Total - 37 feet

18 pails of sample material

Sample: Some black sand, lots of garnets, lots of quartz and clay.



#39



#40

#37

Hole # 9

Pictures # 5, 1, 34 + 36

GPS - Loc. 07 V 0587856

7081755

- 01 - 03 feet - sandy material and rocks
- 03 - 07 feet - medium brown material and rocks
- 07 - 08 feet - powdery grey material and rocks
- 08 - 10 feet - sandy material and rocks
- 10 - 11 feet - grey powdery material and small rocks
- 11 - 12 feet - grey material and medium rocks
- 12 - 14 feet - grey powdery material
- 14 - 17 feet - grey silty material and medium rocks
- 17 - 21 feet - frozen black muck
- @ 21 feet - solid rock
- Total - 21 feet

6 pails of sample material

Sample: Lots of quartz and mica.



#36

#34

Hole # 10

Pictures # 4 + 33

GPS - Loc. 07 V 0587897
7081729

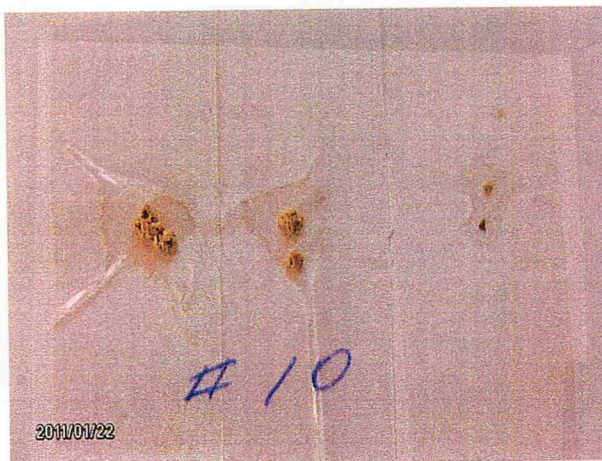
- 01 - 06 feet - frozen black muck
- 06 - 20 feet - grey material and grey rock
- 20 - 23 feet - black muck
- 23 - 25 feet - schist rock
- 25 - 31 feet - small rock, grey and sandy in colour material
- 31 - 38 feet - silty sandy in colour bedrock
- 38 - 42 feet - medium size grey rock and sandy in colour bedrock.
- Total - 42 feet
- 14 pails of sample material
- Sample: 1 small nugget, 2 good colours, 1 small colour and 1 small speck..
- Also lots of black sand and garnets.



#4



#33



Hole # 11

Pictures # 11, 27, 30 + 31

GPS - Loc. 07 V 0587961
7081792

- 01 - 05 feet - frozen black muck
- 05 - 07 feet - frozen grey sandy in colour material with quartz
- 07 - 09 feet - frozen black muck and clay
- 09 - 21 feet - rock and grey material
- 21 - 33 feet - sandy in colour material and small rock, bedrock
- 33 - 43 feet - silty sandy in colour bedrock
- Total - 43 feet

17 pails of sample material

Sample: rocks covered with clay hard to clean and quite a bit of black sand and garnets.



#11



#27



#30



#31

Hole # 12

Pictures # 29, 30 + 31

GPS - Loc. 07 V 0587969
7081810

01 - 07 feet - black muck
07 - 08 feet - rock
08 - 12 feet - grey wet material and rock
@ 12 feet solid rock
Total - 12 feet

3 pails of sample material
Sample: some black sand, garnets and quartz



#29



#30



#31

Hole # 13

Pictures # 32, 33, 34 + 35

GPS - Loc. 07 V 0587887
7081730

- 01 - 07 feet - overburden
- 07 - 11 feet - chocolate brown silty material and rocks
- 11 - 12 feet - sandy in colour silty material, quartz and mica
- 12 - 17 feet - dry material and small rocks
- 17 - 20 feet - dark sandy brown material and small rocks
- 20 - 25 feet - sandy in colour silty bedrock
- @ 25 feet solid bedrock
- Total - 25 feet

10 pails of sample material
Sample: some black sand and lots of garnets



32



33



35



34

Hole # 14

Pictures # 44, 45 + 54

GPS - Loc. 07 V 0587700
7081528

01 - 17 feet - frozen black muck

17 - 23 feet - grey - brown material and crystal quartz

23 - 30 feet - grey - brown material and crystal quartz

30 - 37 feet - sandy brown in colour bedrock

@ 37 feet solid bedrock

Total - 37 feet

13 pails of sample material

Sample: Top 6 pails -lots of quartz, a little black sand + 2 tiny specks

Bottom 7 pails - all bedrock material, lots of quartz, a little black sand and pyrites,
3 tiny specks + 1 med. speck.



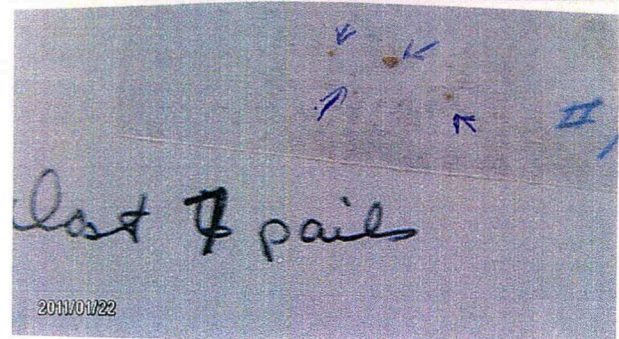
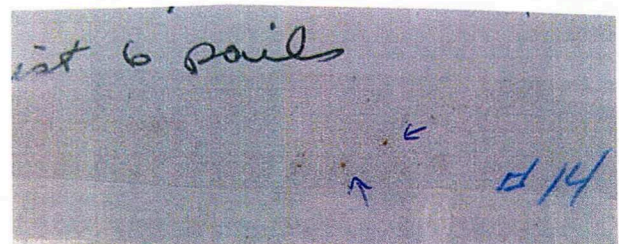
#44



#45



#54



Hole # 15

Pictures # 42, 43.

GPS - Loc. 07 V 0587694
7081519

- 01 - 07 feet - black muck
- 07 - 08 feet - dark brown-grey material, grey rock and quartz
- 08 - 09 feet - frozen brown material and rocks
- 09 - 11 feet - dry brown material and rocks
- 11 - 19 feet - frozen black muck and wood
- 19 - 23 feet - frozen dark grey material and grey rocks
- 23 - 26 feet - frozen black muck, ice and rocks
- 26 - 35 feet - dark grey material and rocks
- 35 - 38 feet - light brown bedrock
- @ 38 feet solid bedrock
- Total - 38 feet

15 pails of sample material

Sample: first 7 pails - lots of quartz, some black sand + 3 specks

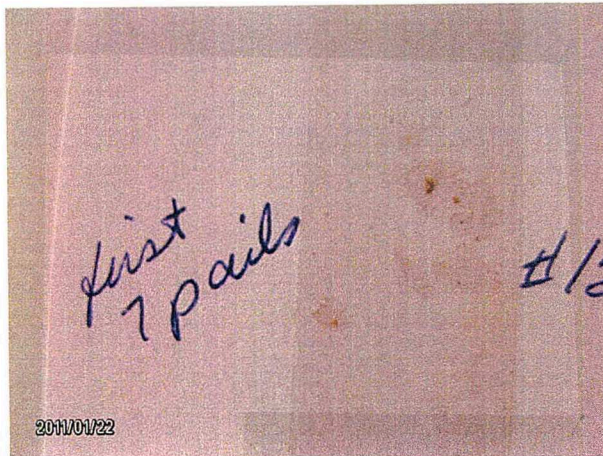
last 8 pails - little quartz, a little black sand and lots of clay on rocks



#42



#43



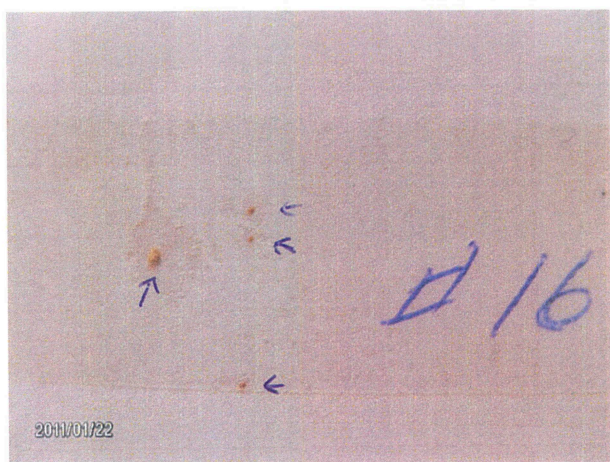
Hole # 16

Pictures # 49, 50 + 51

GPS - Loc. 07 V 0587656
(+/- 29) 7081475

- 01 - 02 - fine gravel
- 02 - 15 - frozen black muck
- 15 - 17 - grey rocks
- 17 - 21 - sandy in colour with rocks and quartz
- 21 - 25 - sandy in colour clay bedrock
- Total - 25 feet

8 pails of sample material
Sample: some black sand, 1 med. Speck + 3 small specks

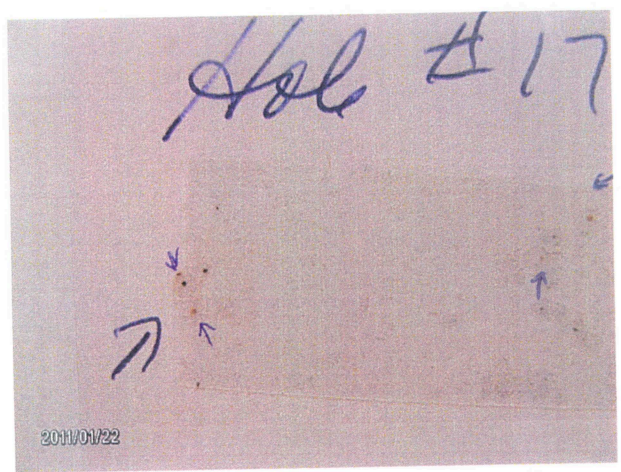


Hole # 17
GPS - Loc. 07 V 0587644
(+/- 31) 7081487

Pictures # 50 + 51

01 - 14 feet - frozen black muck
14 - 23 feet - water and muddy frozen clay, dark sandy colour
@ 23 feet hard to drill
Total - 23 feet

5 pails of sample material
Sample: some quartz, black sand and pyrite + 4 tiny specks of gold



Hole # 18

Pictures # 52, 53

GPS - Loc. 07 V 0587683
(+/- 32) 7081537

- 01 - 06 feet - black muck
- 06 - 08 feet - grey-sandy in colour material, rocks and quartz
- 08 - 12 feet - frozen black muck
- 12 - 15 feet - sandy-grey in colour material, rocks and quartz
- 15 - 17 feet - black muck and wood
- 17 - 30 feet - rock and black material
- 30 - 32 feet - grey wet material and rocks
- 32 - 34 feet - dry grey material and rock
- 34 - 44 feet - grey- sandy in colour bedrock
- @ 44 feet solid bedrock
- Total - 44 feet

20 pails of sample material

Sample: first 10 pails - little black sand, lots of quartz

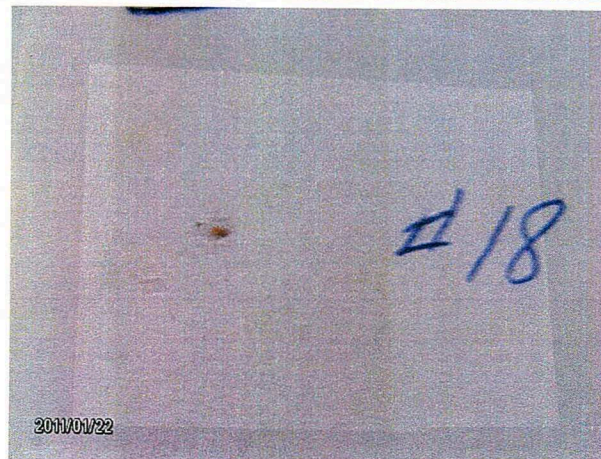
last 10 pails - little black sand, some pyrite and lots of quartz + 1 speck



#52



=53



Hole # 19

Pictures # 60, 61 + 62

GPS - Loc. 07 V 0587668
(+/- 22) 7081512

01 - 07 feet - dry black muck
07 - 18 feet - frozen wet black muck (muddy)
18 - 23 feet - frozen grey material and rocks
@ 23 feet something solid
Total - 23 feet

3 pails of sample material
Sample: some quartz and black sand + 1 tiny speck



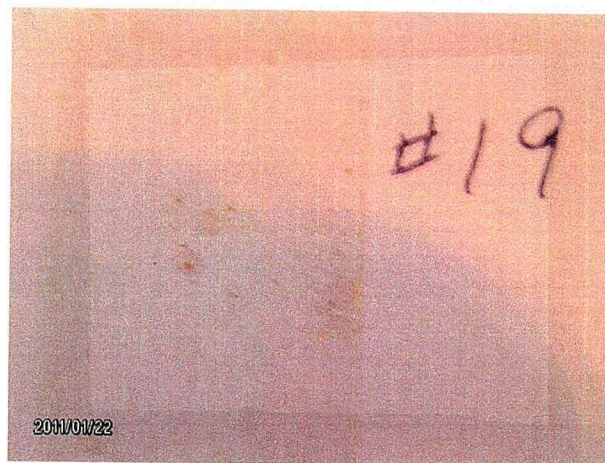
#61



#60



#62



Hole # 20

Pictures # 59 + 60

GPS - Loc. 07 V 0587673-
(+/- 24) 7081518

- 01 - 20 feet - frozen black muck (mud and water)
- 20 - 29 feet - rocks and frozen grey-black material
- 29 - 44 feet - decomposed sandy in colour bedrock
- @ 44 feet solid bedrock

Total - 44 feet

7 pails of sample material

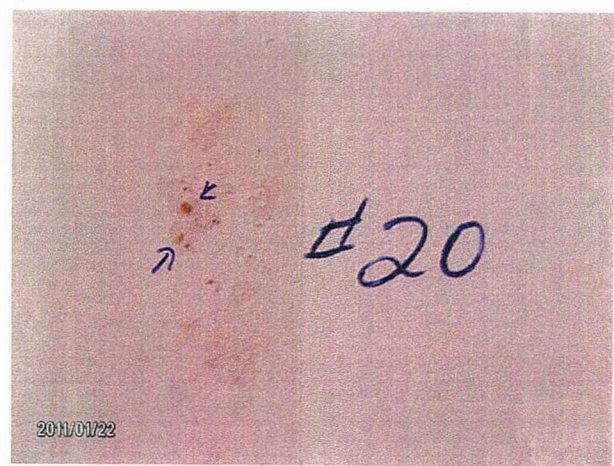
Sample: some quartz, some black sand and a few pyrite + 1 tiny speck and 1 small speck



#59



#60



Hole # 21

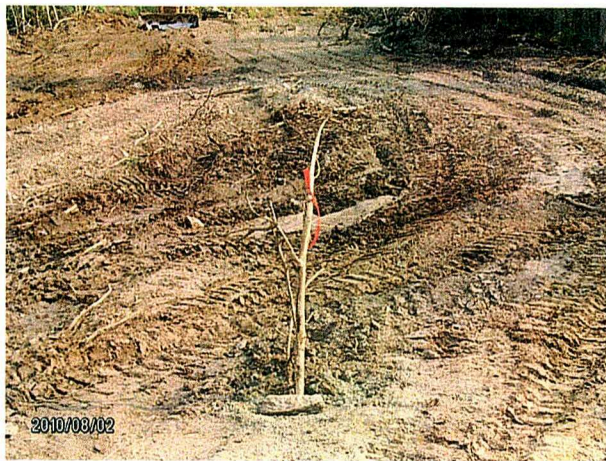
Pictures # 63, 64 + 65

GPS - Loc. 07 V 0587660
(+/- 22) 7081476

01 - 17 feet - frozen black muck and wood
17 - 20 feet - rock and dark grey material
20 - 30 feet - grey clay material and rock
30 - 37 feet - grey bedrock
@ 37 feet solid bedrock
Total - 37 feet

10 pails of sample material

Sample: lots of mica and shale, some black sand + 1 med. colour



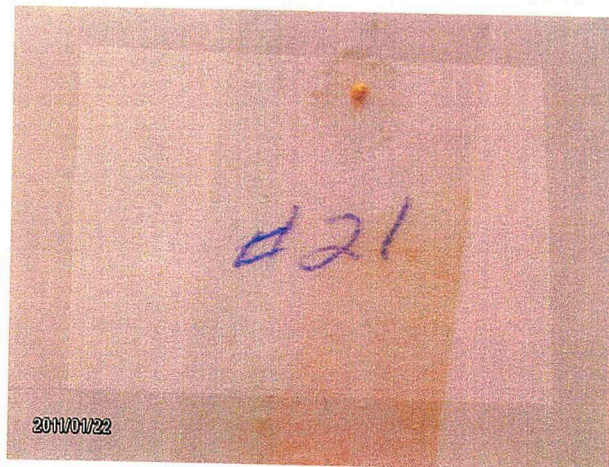
#63



#64



#65



Hole # 22

Pictures # 69 + 70

GPS - Loc. 07 V 0587640
(+/- 27) 7081484

01 - 09 feet - frozen black muck
09 - 17 feet - frozen grey clay, ice, quartz and rock
17 - 19 feet - black muck and then something solid
Total - 19 feet

5 pails of sample material

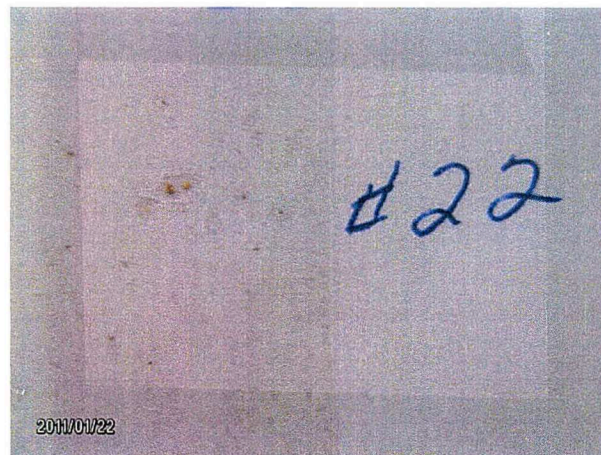
Sample: a little quartz, lots of black sand for the amount of material + 2 specks



69



70



Hole # 23

Pictures # 71 + 72

GPS - Loc. 07 V 0587659
(+/- 32) 7081466

- 01 - 03 feet - black muck
- 03 - 16 feet - silty grey material with small rocks
- 16 - 23 feet - grey mud, rocks and chips
- 23 - 34 feet - decomposed sandy in colour muddy bedrock
- @ 34 feet solid bedrock
- Total - 34 feet

15 pails of sample material

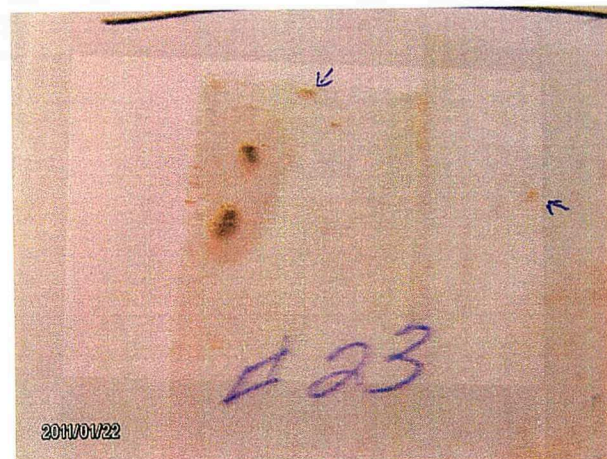
Sample: first 8 pails - lots of quartz and black sand + 1 large colour + 1 med. colour + 2 specks
last 7 pails - all sandy in colour bedrock, little black sand



71



72



Hole # 24

Pictures # 73, 74 + 75

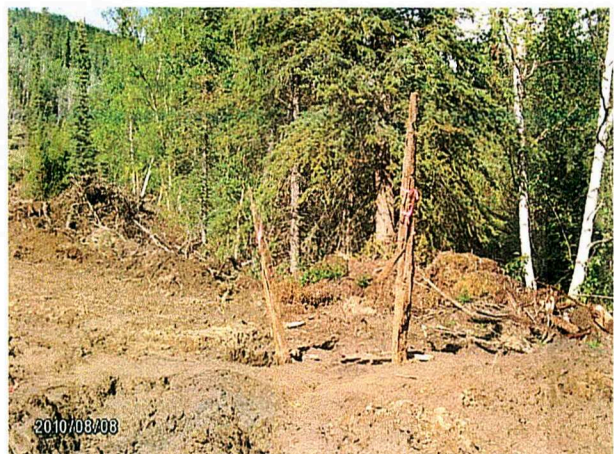
GPS - Loc. 07 V 0587639
(+/- 42) 7081422

01 - 15 feet - frozen black muck
15 - 23 feet - dry grey material and rock
@ 23 feet drill stem got stuck and had a hard time getting stem out hole
Total - 23 feet

3 pails of sample material
Sample: some quartz, little black sand + 1 speck
Moved over a few feet.



73



74



75



Hole # 25

Pictures # 73, 74 + 75

GPS - Loc. 07 V 0587640

(+/- 25) 7081418

01 - 15 feet - frozen black muck

15 - 24 feet - grey material, rock and quartz

24 - 40 feet - light brown - sandy in colour bedrock with rocks and chips

40 - 44 feet - creamy colour powdery solid bedrock

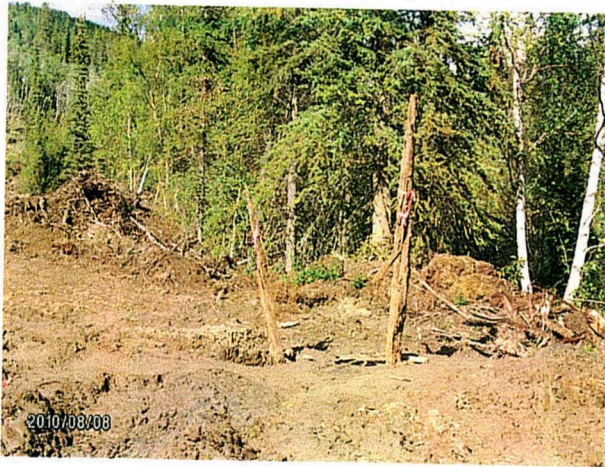
@ 44 feet solid bedrock

Total 44 feet

19 pails of sample

Sample: first 10 pails - some black sand and pyrite

last 9 pails all bedrock - little black sand and a few pyrite + 2 small specks + 1 small colour



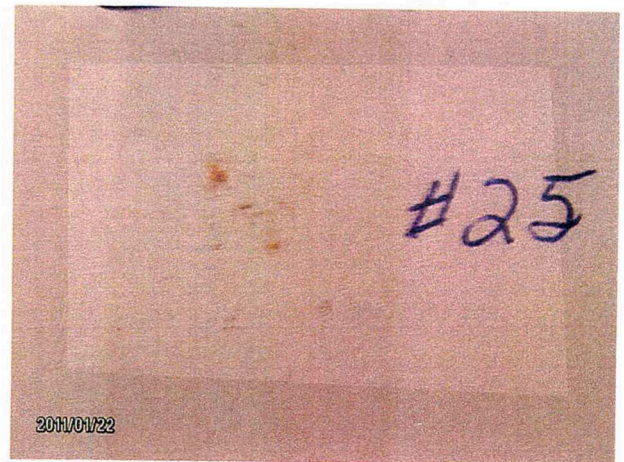
74



73



75



Hole # 26

Pictures # 84, 85, 86 -

GPS - Loc. 07 V 0587635
(+/- 41) 7081438

01 - 08 feet - frozen black muck

08 - 26 feet - frozen grey material, chips, rocks, quartz and wood

26 - 33 feet - decomposed sandy in colour bedrock and chips

33 - 34 feet - powdery solid bedrock

Total - 34 feet

14 pails of sample material

Sample: lots of quartz, shale, mica, some black sand and pyrite + 1 large colour + 2 small colours + 1 speck



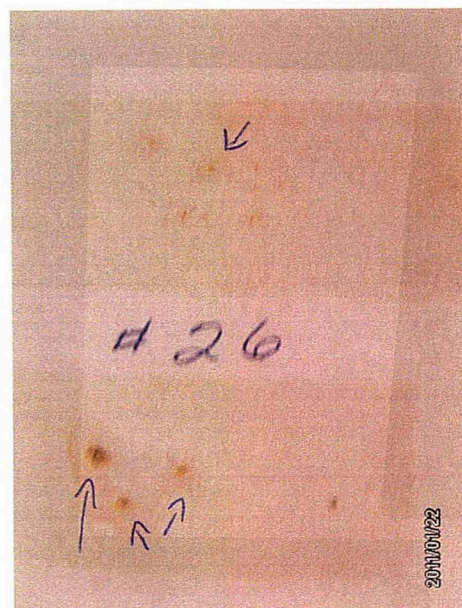
84



85



86



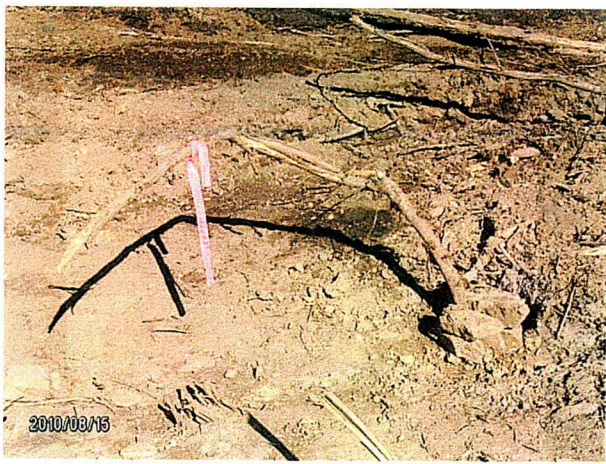
Hole # 27

Pictures # 88, 89, 90.

GPS - Loc. 07 V 0587662
(+/- 38) 7081522

- 01 - 15 feet - frozen black muck
- 15 - 33 feet - wet dark grey material, rock and quartz
- 33 - 38 feet - wet grey silty bedrock
- Total - 38 feet

10 pails of sample of material
Sample: some black sand and quartz + 2 small specks



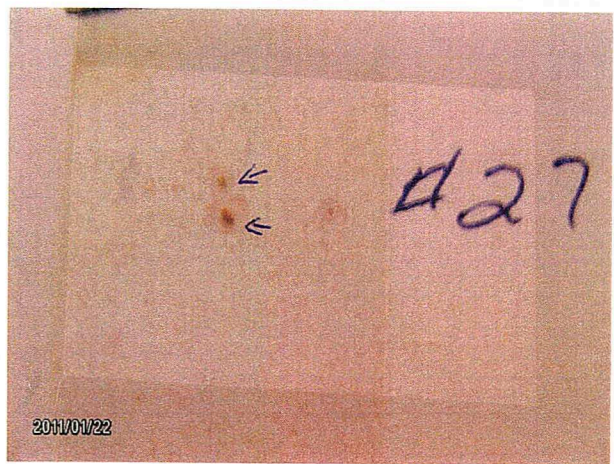
#88



#89



#90



Hole # 28

Pictures # 91, 92, 93

GPS - Loc. 07 V 0587666
(+/- 34) 7081547

01 - 18 feet - frozen black muck and rock
18 - 34 feet - wet grey material, rock and quartz
34 - 42 feet - decomposed and hard light brown
Total - 42 feet

12 pails of sample of material
Sample: little black sand + 2 med. specks + 4 small specks



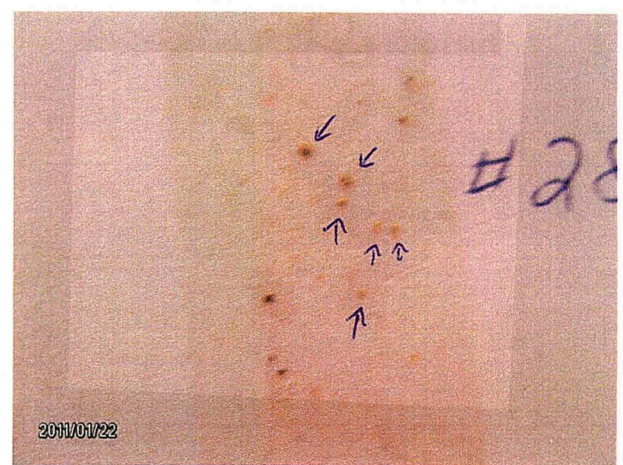
#91



#92



#93



Hole # 29

Pictures # 99, 101 + 103

GPS - Loc. 07 V 0587647

(+/- 22) 7081512

- 01 - 14 feet - frozen black muck and wood
- 14 - 23 feet - frozen grey material, grey rock and quartz
- 23 - 31 feet - dark grey mud
- 31 - 34 feet - rock chips and light brown material
- 34 - 39 feet - sandy in colour bedrock
- @ 39 feet solid bedrock
- Total - 39 feet

12 pails of sample material

Sample: some black sand and a few pyrite + 2 specks



#99

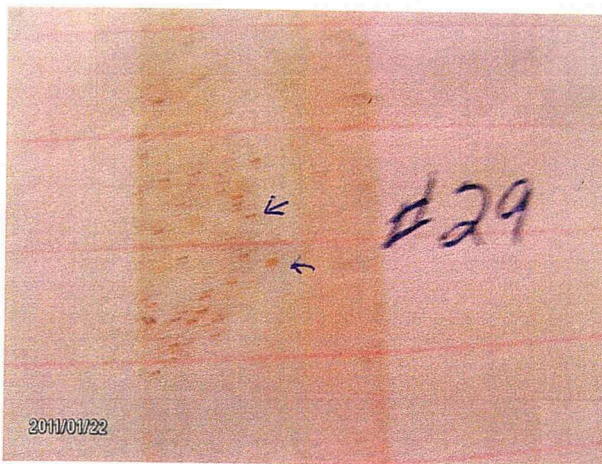


#101



#103

Notes



2011/01/22

Hole # 30

Pictures # 111, 112 + 114

GPS - Loc. 07 V 0587682
(+/- 21) 7081569

- 01 - 06 feet - sandy in colour material and slide rock
- 06 - 18 feet - light brown material and large grey rock
- 18 - 35 feet - mostly loose grey med. rock and broken rock 2" diameter
- 35 - 39 feet - sandy in colour wet bedrock
- Total - 39 feet

10 pails of sample material

Sample: large green/grey rocks and some quartz, lots of mica, a few pyrite and little black sand
+ 1 small speck + 1 tiny speck



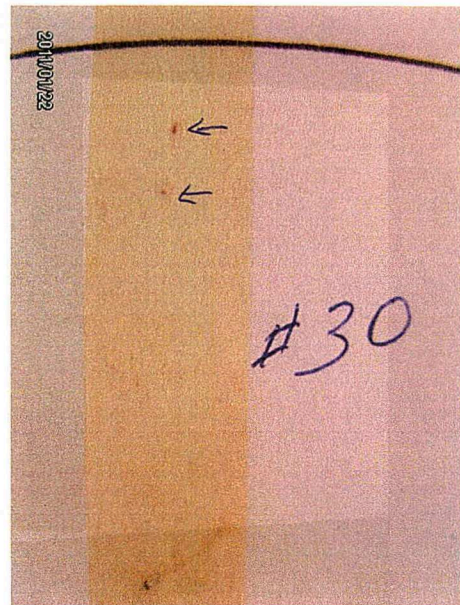
111 hole



112 hole



114 hole #30



Hole # 31

Pictures # 112, 113 + 114

GPS - Loc. 07 V 0587675
(+/- 26) 7081562

- 01 - 08 feet - fluffy dry black material
- 08 - 12 feet - dry black material and rock
- 12 - 20 feet - wet rocky brown material
- 20 - 23 feet - brown material and a few big rocks
- 23 - 26 feet - thick brown mud and chips
- 26 - 33 feet - light brown wet material and chips
- 33 - 37 feet - light brown wet bedrock
- Total - 37 feet

9 pails of sample material (6- 2/3 full, 3 -1/2 full)
Sample: a few quartz, schist, some black sand and pyrite



112



113



114

Hole # 32

Pictures # 107 + 110

GPS - Loc. 07 V 0587608
(+/- 25) 7081524

- 01 - 12 feet - rocks and dry brown material
- 12 - 15 feet - dry grey material and rock chips
- 15 - 18 feet - dry light brown material and rocks
- 18 - 20 feet - dry grey material, grey rock chips and quartz
- 20 - 24 feet - wet brown material, rocks and quartz
- 24 - 29 feet - wet light brown clay bedrock
- @ 29 feet solid bedrock

13 pails of sample material
Sample: lots of quartz, pyrite and lots of black sand



#108



#109



#107



#110

Hole # 33

Pictures # 116, 117, 120 + 121

GPS - Loc. 07 V 0587583
(+/- 33) 7081487

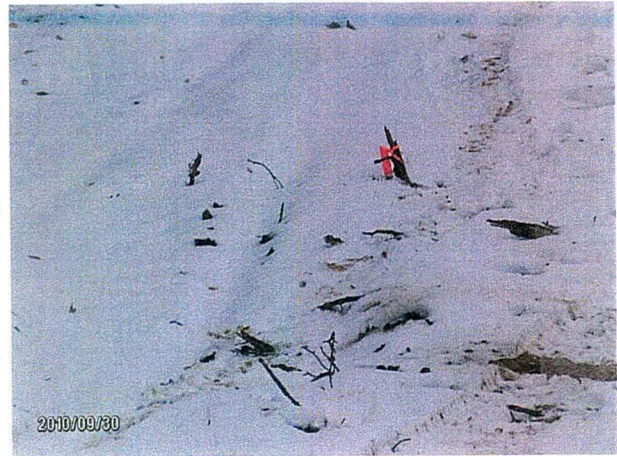
- 01 - 06 feet - over burden
- 06 - 10 feet - wet brown material
- 10 - 11 feet - water
- 11 - 12 feet - muddy brown material
- 12 - 14 feet - wet brown material and chips
- 14 - 15 feet - muddy brown material and rock
- @ 15 feet hit something solid
- Total - 15 feet

4 ½ pails of sample material

Sample: quite a bit of black sand, lots of little black rocks and a few quartz



#116



#117



#121



#120

Hole # 34

Pictures # 115, 120 + 121

GPS - Loc. 07 V 0587574
(+/- 25) 7081478

- 01 - 07 feet - black-grey material and rocks
- 07 - 08 feet - light brown material and rocks
- 08 - 11 feet - black material
- 11 - 25 feet - wet brown material, rock and quartz
- 25 - 35 feet - light brown wet material and chips
- 35 - 39 feet - wet light brown silty bedrock
- @ 39 feet solid bedrock
- Total - 39 feet

18 pails of sample material (1/2 full)
 Sample: first 9 pails - lots of black sand and black rocks and quartz
 last 9 pails - lots of black sand and black rocks + 1 speck
 - clay on rocks, hard to clean



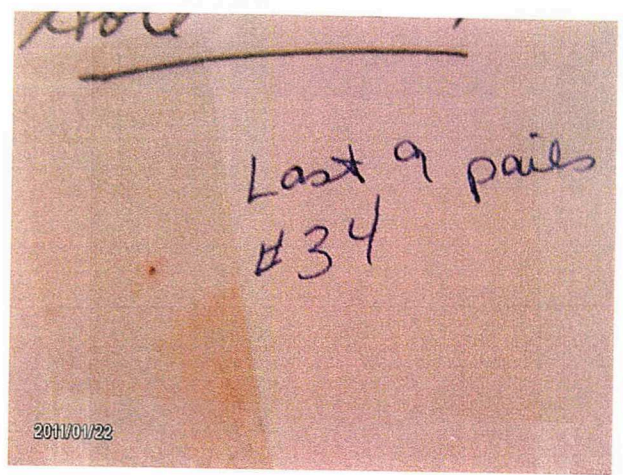
#115



#121



#120



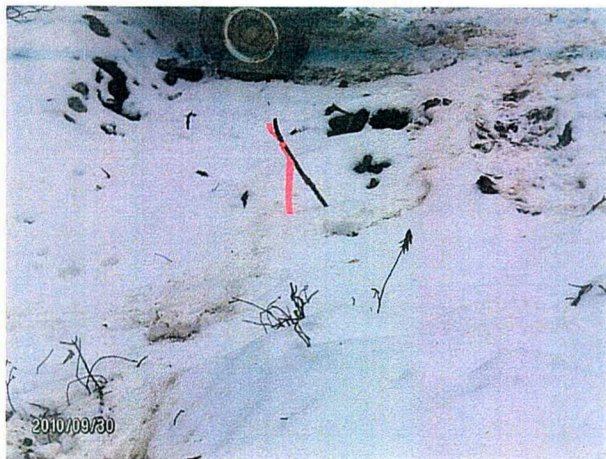
Hole # 35

Pictures # 118, 119, 120 + 121

GPS - Loc. 07 V 0587565
(+/- 18) 7081454

- 01 - 08 - frozen black muck
- 08 - 09 - frozen sandy in colour material
- 09 - 20 - frozen black muck
- 20 - 30 - frozen dark grey material
- 30 - 34 - dry grey material and chips
- 34 - 39 - decomposed brown-grey bedrock
- Total - 39 feet

11 pails of sample material (7-2/3 full, 4-1/2 full)
Sample: some quartz, some black sand and black rocks (less then in #34 + #32)



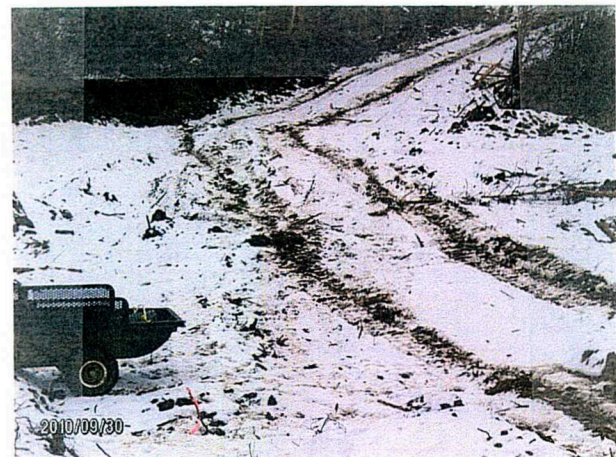
#118



#119



#120



#121

Hole # 36

Pictures # 122, 123 + 125

GPS - Loc. 07 V 0587566
(+/- 27) 7081434

01 - 05 feet - brown material and rocks

05 - 14 feet - frozen black muck

@ 14 feet hit something solid

Total - 14 feet

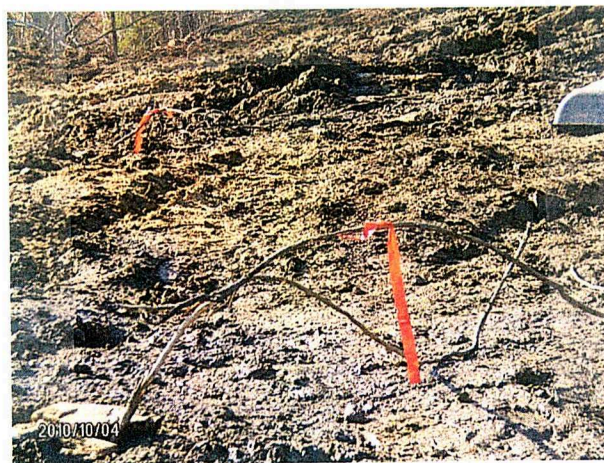
No Sample



#122



#123



#125

Hole # 37

Pictures # 124, 125 + 126

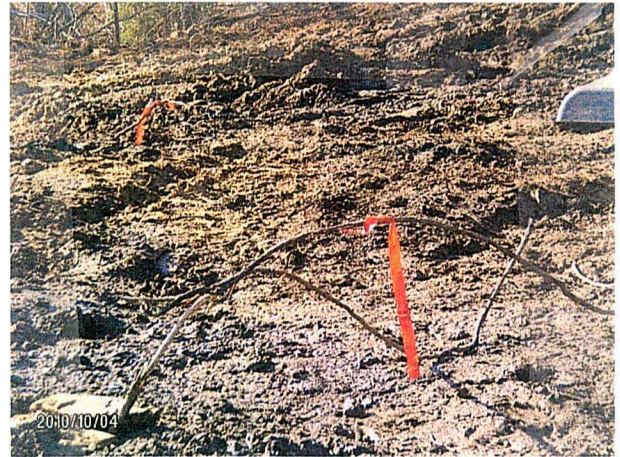
GPS - Loc. 07 V 0587570
(+/- 24) 7081440

01 - 30 feet - frozen black muck, ice and wood
30 - 38 feet - grey material, rock chips and some quartz
38 - 39 feet - decomposed grey bedrock
Total - 39 feet

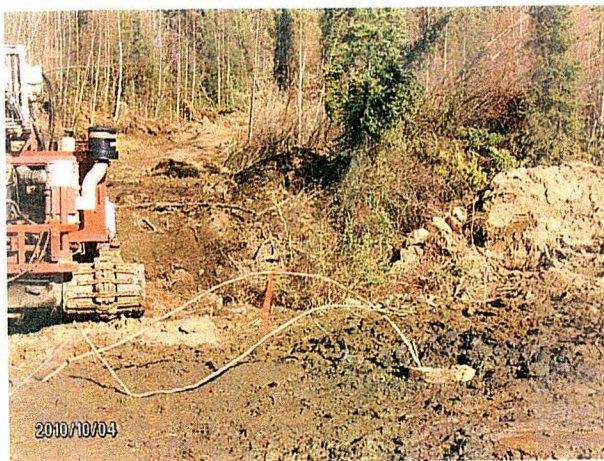
5 pails (2/3) full of sample material
Sample: lots of quartz, some black + 1 speck



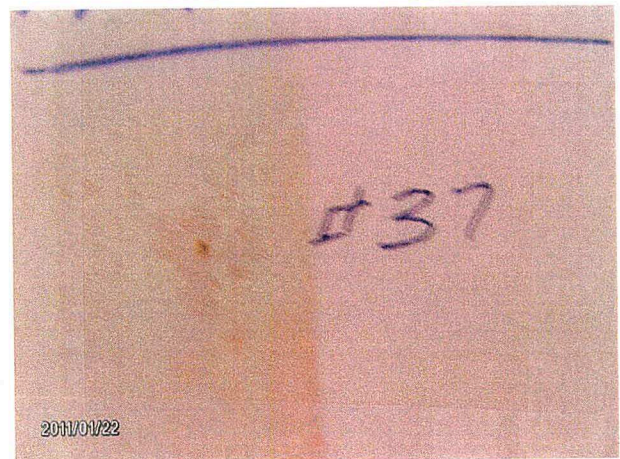
#126



#125



#124



#37

Hole # 38

Pictures # 127, 128 + 129

GPS - Loc. 07 V 0587572
(+/- 32) 7081451

- 01 - 10 feet - frozen black muck
- 10 - 19 feet - dry black muck and rock
- 19 - 26 feet - black material, grey rock and quartz
- 26 - 37 feet - brown material gravel like chips
- 37 - 40 feet - grey rocky bedrock
- 40 - 41 feet - light sandy in colour powdery bedrock
- @ 41 feet solid bedrock
- Total - 41 feet

7 (½ full) and 1/4 pails of sample material
Sample: lots of mica, some quartz, some black sand and pyrite
Material is different here then in hole #35.



127



H/129



#128

Placer Drill Log

Date Stamp

Date: June 5th to 17th. Driller: DAVE LAURENSEN
 Type of drill: AUGER Inside Diameter of Drill: 6"
 Location: CHIEF GULCH
 Lease or Grant Numbers: P17426

Drill Hole Number	Total Footage	Breakdown in feet	Materials encountered	Remarks: Samples / Results
#1	10 ft.	10 ft.	Black muck then hit solid rock	
#2	44 ft.	1-12 ft.	Black muck	
		12-22 ft.	brown light material + some quartz	some
		22-44 ft.	fine sandy material bedrock	black sand
			bedrock then hit solid bedrock	
#3	44 ft.	1-5 ft.	med. grey shale rock	
		5-15 ft.	small rock, dark brown material	
		15-23 ft.	small rock + light brown material	
		23-31 ft.	grey rock	
		31-38 ft.	small rock + light material	very little
		40-44 ft.	fine wet bedrock	black sand
#4	40 ft.	1-15 ft.	rocks + dark reddish brown dry material	
		15-18 ft.	brown material	small light
		18-28 ft.	rock, shale + quartz	green rock
		28-35 ft.	small rock + grey clay material	some black sand
		35-40 ft.	sandy bedrock	1 med. speck.
total	138 ft.			

Date: July 23/2010 Signed (Driller or Representative): [Signature]

Placer Drill Log

Date Stamp

Date: June 18 + 19 + 24 / 2010 Driller: DAVE LAURENSEN
 Type of drill: AUGER Inside Diameter of Drill: 6"
 Location: CHIEF GUICH
 Lease or Grant Numbers: P17426

Drill Hole Number	Total Footage	Breakdown in feet	Materials encountered	Remarks: Samples / Results
# 5	25 ft.	1-2 ft.	red frozen mud	
		2-7 ft.	frozen black muck + wood	
		7-13 ft.	frozen black muck + rock	
		13-15 ft.	frozen sandy material + rock	Some black sand
		15-23 ft.	frozen brown material + rock	
# 6	44 ft.	23-25 ft.	grey clay bedrock	
		1-5 ft.	black muck	
		5-12 ft.	fine light brown gravel	
		12-25 ft.	wet sandy material + some quartz	
		25-36 ft.	dry sandy material, shale + quartz	lots of black sand + garnets
# 7	38 ft.	36-44 ft.	sandy powdery bedrock	
		1-5 ft.	black muck	
		5-16 ft.	gravel + dry brown material	
		16-26 ft.	wet brown material + rock	lots of quartz and little black sand
		26-32 ft.	muddy light brown material + rock	
Total	107 ft.	32-38 ft.	water + then solid bedrock	

Date: July 23/2010 Signed (Driller or Representative): [Signature]

Placer Drill Log

Date Stamp

Date: July 16th / 2010 Driller: DAVE LAURENSEN
 Type of drill: AUGER Inside Diameter of Drill: 6"
 Location: CHIEF GULCH
 Lease or Grant Numbers: P 17426

Drill Hole Number	Total Footage	Breakdown in feet	Materials encountered	Remarks: Samples / Results
# 8	37 ft.	1-3 ft.	frozen black muck	
		3-4 ft.	frozen grey material	
		4-13 ft.	dry grey material, small rocks + mica	
		13-20 ft.	Sandy grey material + rocks	
		20-22 ft.	stiff grey material + rocks	lots of quartz + clay
		22-23 ft.	light grey material (frozen) + rocks	
		23-26 ft.	frozen grey material	lots of garnets +
		26-30 ft.	frozen brown material	some black sands
		30-37 ft.	sandy bedrock	
total	37 ft.			

Date: July 23 / 2010 Signed (Driller or Representative): [Signature]

Placer Drill Log

Date Stamp

Date: June 26 + 29th / 2010 Driller: DAVE LAURENSEN
 Type of drill: AUGER Inside Diameter of Drill: 6"
 Location: NO NAME PUP OF CHIEF GULCH
 Lease or Grant Numbers: P10466

Drill Hole Number	Total Footage	Breakdown in feet	Materials encountered	Remarks: Samples / Results
#9	21 ft.	1-3 ft.	Sandy material + rocks	
		3-7 ft.	med brown material + shale	
		7-8 ft.	powdery grey material + shale	
		8-10 ft.	sandy material + rocks	
		10-11 ft.	grey powdery material + small rocks	lots of quartz
		11-12 ft.	grey material + rocks	and mica
		12-14 ft.	grey powdery material	
		14-17 ft.	grey fine material + med rocks	
#10	42 ft.	17-21 ft.	black muck and then solid bedrock	
		1-6 ft.	frozen black muck	
		6-20 ft.	grey material + grey rock	
		20-23 ft.	black muck	
		23-25 ft.	rock	
		25-31 ft.	small rock + grey + sandy material	some black sand +
		31-38 ft.	fine sandy bedrock	garnets
Total	63 ft.	38-42 ft.	med. grey rock + sandy bedrock	

Date: July 23 / 2010 Signed (Driller or Representative): [Signature]

Placer Drill Log

Date Stamp

Date: July 4th, + 13th, + 14th / 2010 Driller: DAVE LAURENSEN
 Type of drill: AUGER Inside Diameter of Drill: 6"
 Location: No NAME Pup of CHIEF GULCH
 Lease or Grant Numbers: P 10466

Drill Hole Number	Total Footage	Breakdown in feet	Materials encountered	Remarks: Samples / Results
# 11	43 ft.	1-5 ft.	frozen black muck	
		5-7 ft.	grey sandy material (frozen) with quartz	
		7-9 ft.	frozen black muck	quite a bit of
		9-21 ft.	rock + grey clay	black sand +
		21-33 ft.	rock + sandy clay	garnets
# 12	12 ft.	33-43 ft.	fine sandy bedrock	
		1-7 ft.	black muck	
		7-8 ft.	rock	
# 13	25 ft.	8-12 ft.	wet grey bedrock + rock then hit solid bedrock	
		1-7 ft.	overburden	
		8-11 ft.	chocolate brown material + rocks	
		11-12 ft.	sandy fine material + quartz + mica	
		12-17 ft.	grey material + small rocks	some black
		17-20 ft.	dark sandy material + small rocks	sand +
		20-25 ft.	fine sandy bedrock	lots of garnets
Total	80 ft.			

Date: July 23/2010 Signed (Driller or Representative): [Signature]

Placer Drill Log

Date Stamp

Date: July 18th. + 19th. / 2010 Driller: DAVE LAURENSEN
 Type of drill: AUGER Inside Diameter of Drill: 6"
 Location: CHIEF GULCH
 Lease or Grant Numbers: P17426

Drill Hole Number	Total Footage	Breakdown in feet	Materials encountered	Remarks: Samples / Results
# 14	37 ft.	1-17 ft.	frozen black muck	
		17-23 ft.	grey brown material + quartz rock	lots of quartz
		23-30 ft.	sandy brown material + crystal quartz	+ a little
		30-37 ft.	sandy brown bedrock	black sand
# 15	38 ft.	1-7 ft.	Black muck	
		7-8 ft.	dark grey + brown material + grey rock + quartz	
		8-9 ft.	brown frozen material + rocks	
		9-11 ft.	dry brown material + rocks	
		11-19 ft.	frozen black muck + wood	
		19-23 ft.	frozen dark grey material + grey rocks	
		23-26 ft.	frozen black muck, ice + rocks	
		26-35 ft.	dark grey material + rocks	
35-38 ft.	light brown bedrock			
total	75 ft.			

Date: July 23/2010 Signed (Driller or Representative): [Signature]

Placer Drill Log

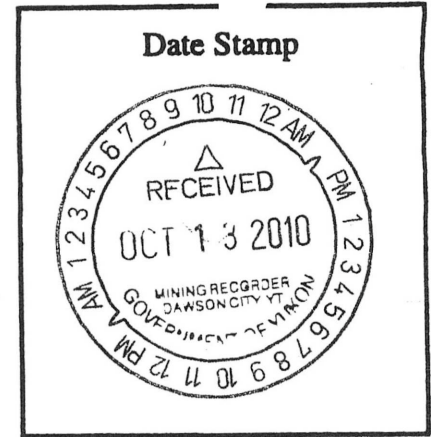
Date Stamp

Date: July 22 / 2010 Driller: DAVE LAURENSEN
 Type of drill: AUGER Inside Diameter of Drill: 6"
 Location: CHIEF GULCH
 Lease or Grant Numbers: P17426

Drill Hole Number	Total Footage	Breakdown in feet	Materials encountered	Remarks: Samples / Results
#16	25 ft.	1-2 ft.	sandy gravel	
		2-15 ft.	frozen black muck	
		15-17 ft.	grey gravel	Some black
		17-21 ft.	sandy material with rocks + quartz	sand
		21-25 ft.	sandy clay bedrock	
	25 ft.			

Date: July 29 / 2010 Signed (Driller or Representative): [Signature]

Placer Drill Log



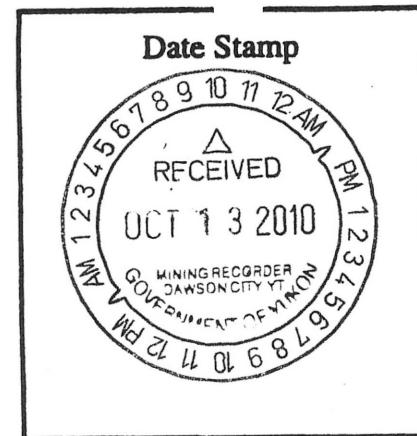
Date: July 25 + 27/2010 Driller: Dave Lawson son
 Type of drill: Auger Inside Diameter of Drill: 6"
 Location: Chief Gulch
 Lease or Grant Numbers: P 17426

Drill Hole Number	Total Footage	Breakdown in feet	Materials encountered	Remarks: Samples / Results
# 17	23 ft.	1-14 ft. 14-23 ft.	frozen black muck water + muddy sandy (color) clay bedrock	Some quartz and some black sand and garnets
# 18	44 ft.	1-6 ft. 6-8 ft. 8-12 ft. 12-15 ft. 15-17 ft. 17-30 ft. 30-32 ft. 32-34 ft. 34-44 ft. at 44 ft.	black muck grey, sandy (color) mat. grey rock + quartz frozen black muck sandy + grey mat. + rocks black muck + wood grey rock + black mat grey wet mat. + rock drier grey mat. + rock grey sandy bedrock Solid bedrock	# 1-10 pails little black sand + lots of quartz # 10-20 pails little black sand + some garnets + lots of quartz
	67 ft.			

Date: Sept. 11/10

Signed (Driller or Representative): [Signature]

Placer Drill Log



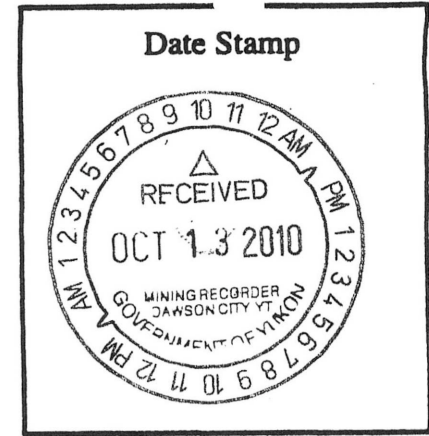
Date: July 29 Driller: Dave Lauranson
 Type of drill: Auger Inside Diameter of Drill: 6"
 Location: Chief Gulch
 Lease or Grant Numbers: P17426

Drill Hole Number	Total Footage	Depth Interval in feet	Materials encountered	Remarks: Samples / Results
#19	23 ft.	1-7 ft.	dry black muck	some quartz and black sand
		7-18 ft.	frozen black muck	
		18-23 ft.	frozen grey mat. + rock	
		23 ft.	hit something solid	
#20	44 ft.	1-20 ft.	frozen black muck	some quartz and some black sand and a few garnets
		20-29 ft.	grey rocks + mat. + black mat. (frozen)	
		29-44 ft.	decomposed bedrock sandy color	
		at 44 ft.	solid bedrock	
	67 ft.			

Date: Sept. 11/10

Signed (Driller or Representative): [Signature]

Placer Drill Log



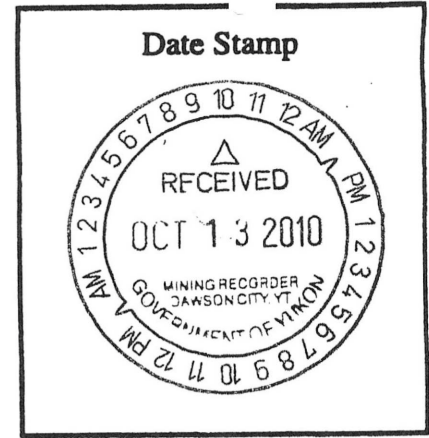
Date: July 31 / Aug 2+3/2010 Driller: Dave Lamenson
 Type of drill: Auger Inside Diameter of Drill: 6"
 Location: Chief Gulch
 Lease or Grant Numbers: P 17426

Drill Hole Number	Total Footage	Breakdown in feet	Materials encountered	Remarks: Samples / Results
# 21	37 ft.	1-17 ft.	frozen black muck + wood	
		17-20 ft.	grey rock + dark grey mat.	lots of mica + shale
		20-30 ft.	grey clay mat + rock	some black sand
		30-37 ft.	grey bedrock	
		at 37 feet	solid bedrock	
# 22	19 ft.	1-9 ft.	frozen black muck	a little quartz
		9-17 ft.	frozen grey clay + ice grey rock + quartz	and lots of black sand
		17-19 ft.	black muck + then solid	
# 23	34 ft.	1-3 ft.	black muck	#1-8 - lots of quartz +
		3-16 ft.	fine grey mat + small rocks	lots of black sand
		16-23 ft.	grey mud, rocks + chips	#9-15 - little black sand
		23-34 ft.	Sandy color muddy decomposed bedrock	
		at 34 ft.	solid bedrock	
	90 ft.			

Date: Sept 11/10

Signed (Driller or Representative): [Signature]

Placer Drill Log

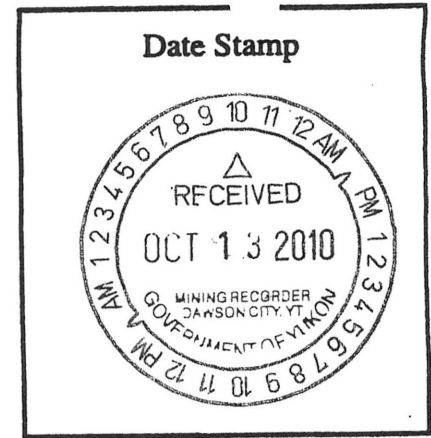


Date: Aug 5 + 7 / 2010 Driller: Dave Laurinsson
 Type of drill: Auger Inside Diameter of Drill: 6"
 Location: Chip Gulch
 Lease or Grant Numbers: P17426

Drill Hole Number	Total Footage	Descriptions in feet	Materials encountered	Remarks: Samples / Results
#24	23 ft.	1-15 ft. 15-23 ft. at 23 ft.	frozen black muck rock chips + grey mat. drill stem got stuck in hole	some quartz and a little black sand
#25	44 ft.	1-15 ft. 15-24 ft. 24-40 ft. 40-44 ft.	frozen black muck grey mat + rock + quartz Sandy bedrock mat. with rocks + chips creamy color powdery solid bedrock	#1-10 - lots of quartz, some black sand + garnet 70-19 - little black sand and a few garnets
#26	34 ft.	1-8 ft. 8-26 ft. 26-33 ft. 33-34 ft.	frozen black muck frozen chips, rock + grey mat. + quartz + wood decomposed sandy bedrock + chips creamy color powdery solid bedrock	lots of quartz, shale + mica. Some black sand + garnets
	101 ft.			

Date: Sept. 11 / 10 Signed (Driller or Representative): [Signature]

Placer Drill Log



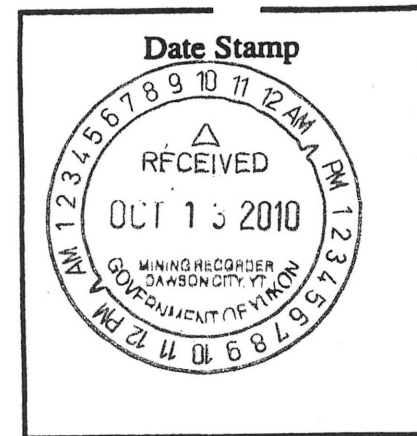
Date: Aug. 11, 12 & 16 / 2010 Driller: Dave Lamenson
 Type of drill: Auger Inside Diameter of Drill: 6"
 Location: Chief Gulch
 Lease or Grant Numbers: P 17426

Drill Hole Number	Total Footage	Depth Interval in feet	Materials encountered	Remarks: Samples / Results
#27	38 ft.	1-15 ft.	frozen black muck	some black sand + Quartz
		15-33 ft.	rock + wet dark grey mat + quartz	
		33-38 ft.	wet grey fine bedrock	
#28	42 ft.	1-18 ft.	frozen black muck + rock	Little black sand
		18-34 ft.	rock + wet grey mat + quartz	
		34-42 ft.	decomposed to hard light brown bedrock	
#29	39 ft.	1-14 ft.	frozen black muck + wood	some black sand and a few garnets
		14-23 ft.	rock + grey frozen mat + quartz	
		23-31 ft.	dark grey mud	
		31-34 ft.	rock chips + light brown mat.	
		34-39 ft.	sandy bedrock	
		at 39 ft.	solid bedrock	
	119 ft.			

Date: Sept. 11/10

Signed (Driller or Representative): [Signature]

Placer Drill Log



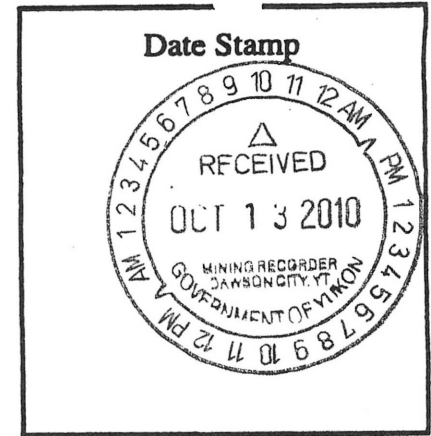
Date: Sept. 17/10 Driller: Dave Lamerson
 Type of drill: Auger Inside Diameter of Drill: 6"
 Location: Chief Gulch
 Lease or Grant Numbers: P17426

Drill Hole Number	Total Footage	Breakdown in feet	Materials encountered	Remarks: Samples / Results
# 30	39 ft.	1-6	Sandy brown mat. + slide rock	(large grey rock and some quartz, lots of mica, some pyrite and a little black sand.
		6-18	light brown mat. + large schist grey rock	
		18-35	mostly loose grey med. rock	
		35-39	sandy wet bedrock	
# 31	37 ft.	1-8	fluffy dry black muck	a few quartz + schist some black sand and pyrite.
		8-12	rock + dry black muck	
		12-20	wet rocky brown mat.	
		20-23	brown mat + a few big rocks	
		23-26	Thick sloppy brown mud + chips	
		26-33	light brown wet mat. + chips	
33-37	light brown wet bedrock			
	76 ft.			

Date: Oct. 8/10

Signed (Driller or Representative): [Signature]

Placer Drill Log



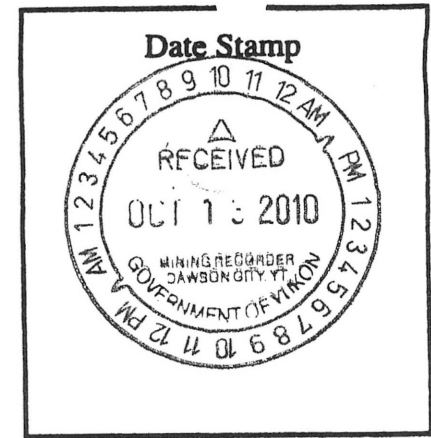
Date: Sept. 17+19/10 Driller: Dave Lamanson
 Type of drill: Auger Inside Diameter of Drill: 6"
 Location: Chief Gulch
 Lease or Grant Numbers: P17426

Drill Number	Total Footage	Breakdown in feet	Materials encountered	Remarks: Samples / Results
32	29 ft.	1-12	grey rocks + brown mat.	lots of quartz, pyrite and black sand
		12-15	grey mat. + rock chips	
		15-18	light brown mat. + rock	
		18-20	grey mat. + grey chips + quartz	
		20-24	wet brown mat. rocks + quartz	
		24-29	wet light brown clay bedrock	
#33	15 ft.	1-6	over burden	quite a bit of black sand and lots of little black rock and a little quartz.
		6-10	wet brown mat.	
		10-11	water	
		11-12	muddy brown mat.	
		12-14	wet brown mat. + chips	
		14-15	muddy brown mat. + rock	
		@ 15 ft.	hit something solid	
	44 ft.			

Date: Oct. 8/10

Signed (Driller or Representative): [Signature]

Placer Drill Log



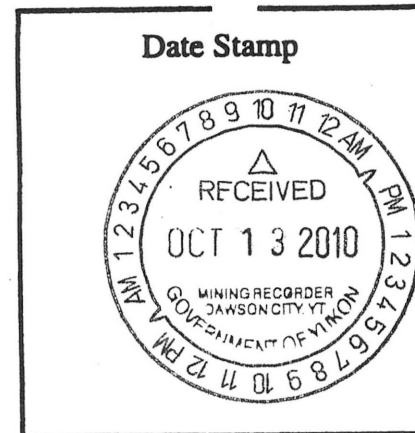
Date: Sept. 19 + 21/10 Driller: Dave Lawenson
 Type of drill: Auger Inside Diameter of Drill: 6"
 Location: Chief Gulch
 Lease or Grant Numbers: P17426

Drill Hole Number	Total Footage	Breakdown in feet	Materials encountered	Remarks: Samples / Results
# 34	39 1/4	1-7	black + grey mat + rocks	1-9 pails - lots of black
		7-8	light brown mat + quartz	sand + quartz + black
		8-11	black mat over boulder	rocks
		11-25	rock + light brown wet mat	10-18 pails - lots of
			schist + quartz	black sand +
			chips + light brown wet mat.	black rocks
# 35	39 1/4	25-35	chips + light brown wet mat.	
		35-39	wet light brown fine mat.	
		@ 39 1/4	solid bedrock	
		1-8	frozen black muck	
		8-9	frozen sandy color mat.	some quartz
	9-20	frozen black muck	some black sand	
	20-30	frozen dark grey mat.	and black rocks	
	30-34	dry grey mat + chips		
	34-39	decomposed brownish grey bedrock		
	78 1/4			

Date: Oct. 8/10

Signed (Driller or Representative): [Signature]

Placer Drill Log

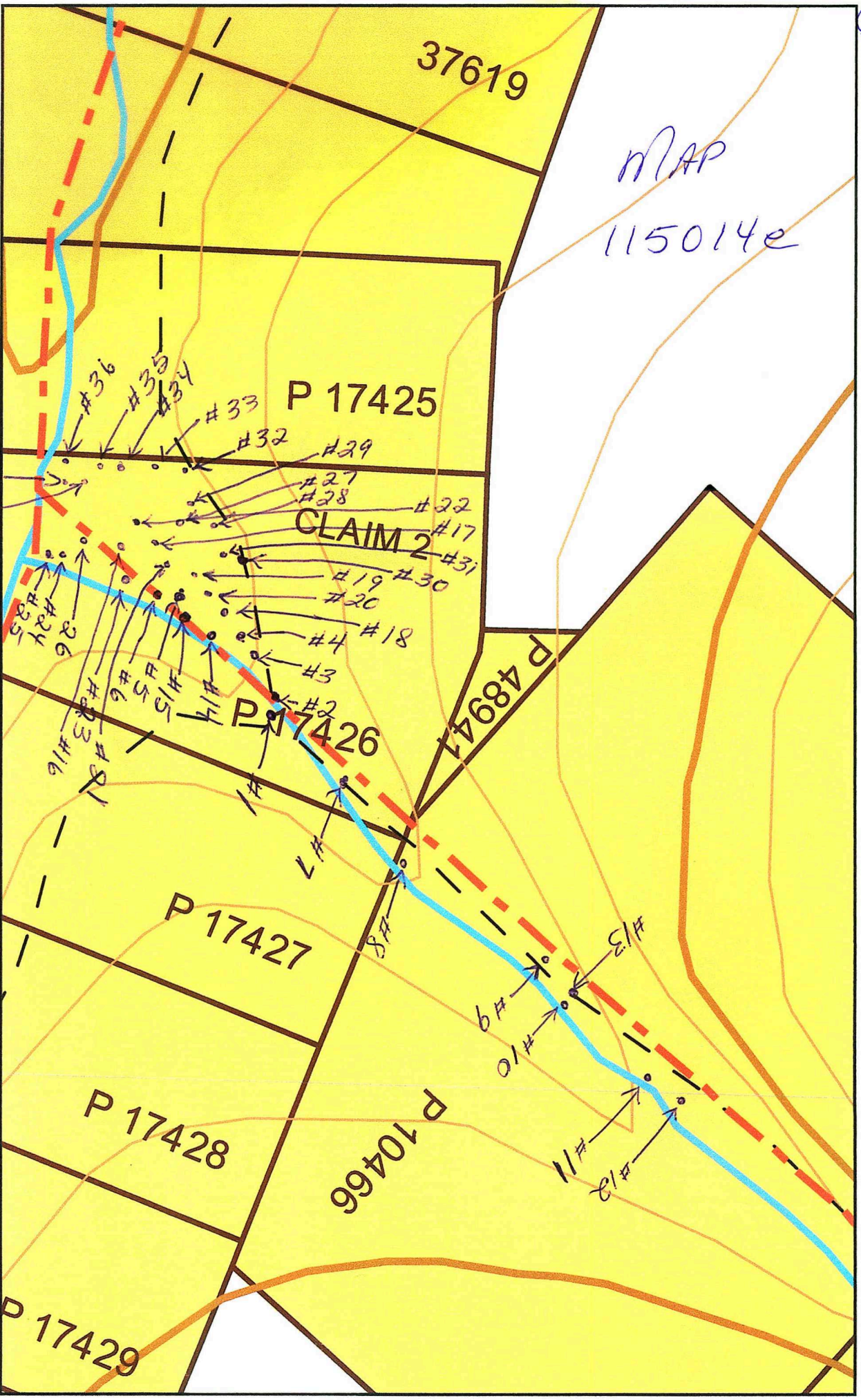


Date: Sept. 30 + Oct. 4th /10 Driller: Dave Lawrenson
 Type of drill: Auger Inside Diameter of Drill: 6"
 Location: Chief Gulch
 Lease or Grant Numbers: P17426

Drill Hole Number	Total Footage	Depth/Intervals in feet	Materials encountered	Remarks: Samples / Results
# 36	14 ft.	1-5	Brown mat. + rocks	
		5-14	frozen black muck	no sample
		@ 14 ft.	hit something solid	
# 37	39 ft.	1-30	frozen black muck, ice + wood	
		30-38	rock chips + black/grey mat. + some quartz	lots of quartz some black sand
		38-39	decomposed grey bedrock	
# 38	41 ft.	1-10	frozen black muck	
		10-19	dry black muck + rock	lots of mica
		19-26	black mat. + grey rock + quartz	some quartz
		26-37	brown mat. + gravel like chips	some black
		37-40	grey schist bedrock	sand + pyrite
		40-41	Solid bedrock (light sandy powder)	
	94 ft.			

Date: Oct. 8 /10

Signed (Driller or Representative): [Signature]



MAP
115014e

P 17425

CLAIM 2

P 17426

P 48941

P 17427

P 17428

P 17429

P 70466

#37
#38

#36
#35
#34

#33
#32
#29

#27
#28
#22
#17

#19
#20
#31
#30

#4
#18
#3

#27
#24
#25
#26
#23
#16
#15
#14
#13
#12
#11
#10
#9
#8
#7
#6
#5
#4
#3
#2

#13
#9
#10

#11
#12

YEIP

2010 - 010

YMIP Program

01-010

David Laurenson

Box 648

Dawson City, YT

Chief Gulch



PS