



## **RECONNAISSANCE GEOCHEMICAL AND GEOLOGICAL REPORT**

**YMIP 10-150 (RUN; Target 9)**

NTS 115J/11, 115J/12

LAT: 62.65° N

LONG: 139.55° W

**WHITEHORSE MINING DISTRICT**

Alan J. Wainwright, Ph.D., P.Geol.  
Kaminak Gold Corp.  
Suite 1440 – 625 Howe Street  
Vancouver BC V6C 2T6

WORK PERFORMED September 5-7, 2010

DATE OF REPORT February 20, 2011

## Table of Contents

1.0 SUMMARY .....	3
2.0 INTRODUCTION .....	3
3.0 LOCATION.....	3
4.0 ACCESS AND PHYSIOGRAPHY.....	3
5.0 PREVIOUS WORK .....	3
6.0 GEOLOGICAL SETTING.....	3
6.1 Regional Geology.....	3
6.2 Property Geology .....	8
7.0 WORK PERFORMED/METHODS.....	9
7.1 Soil Survey .....	9
8.0 RESULTS.....	10
9.0 RECOMMENDATIONS.....	10
10.0 COST SUMMARY .....	11
11.0 REFERENCES CITED .....	11
12.0 QUALIFICATIONS .....	11
13.0 APPENDIX 1 – RUN Claims.....	12
14.0 APPENDIX 2 – Sample locations and analytical results for select elements.....	23

## List of Figures

Figure 1 Location of the RUN claims, 160 km south of Dawson City, west-central Yukon.....	4
Figure 2 RUN claims.....	5
Figure 3 Panoramic view of the RUN propert.....	5
Figure 4 Regional geologic setting for the RUN claims.....	6
Figure 5 Regional aeromagnetic map for the RUN claims.....	7
Figure 6 Property geology map for the RUN claims.....	8
Figure 7 Dun-weathering, foliated mafic-ultramafic rocks from the southeast corner of the RUN claims. ....	9
Figure 8 Gold-in-soil values obtained during the reconnaissance soil campaign at RUN.....	10

## List of Tables

Table 1 Cost summary for work completed in 2010 on the RUN claims.....	11
--	----

## **1.0 SUMMARY**

The RUN claims are located 160 km south of Dawson City in west-central Yukon. The 292 claims were staked in 2010 based on favourable geologic setting, regional aeromagnetic characteristics, and regional structures in addition to the location of Minfile occurrences and anomalous regional stream sediment samples. A reconnaissance soil sampling program was conducted in September 2010 focusing on ridge tops covering the majority of the property at 50 m sample spacing (662 samples). No geochemical anomalies of interest were detected in the sampling program and no further work is recommended on the RUN claims at this time.

## **2.0 INTRODUCTION**

The focused regional exploration program was undertaken by Kaminak Gold Corp. in 2010 in order to target the Dawson Range for gold potential. This document summarizes the reconnaissance geochemical and geological program designed to test the RUN claims (Target 9), located 160 km south of Dawson City, west-central Yukon.

## **3.0 LOCATION**

The RUN claims are located 160 km south of Dawson City in west-central Yukon and approximately 25 km south of the Supremo Zone on Kaminak's Coffee property (Figure 1). A total of 292 claims were staked in 2010 during two campaigns (RUN claims staked by Minconsult and RUN2 claims staked by GroundTruth Exploration; Figure 2; Appendix 1). The RUN and RUN2 claims are contiguous and considered as part of the same RUN exploration project.

## **4.0 ACCESS AND PHYSIOGRAPHY**

The RUN claims were accessed by helicopter based out of the Thistle Creek camp. The area consists of rolling to steep hills centered by a wide flat area (Figure 3). The hills around the periphery of the claim area are incised by streams that drain into the central basin. The higher topography is covered by trees and the lower areas are covered by shrubbery or local swamps. Outcrops are exposed at the highest point on the property in the southeast corner and minor outcrops were noted from the air in treed ridge tops. The elevation range on the property is approximately 550 m to 1300 m.

## **5.0 PREVIOUS WORK**

Limited historic work has been performed on the RUN claims. Minfile occurrence 115J 042 occurs on the east side of the property. The area was staked as the Run claims (Y41252) in Dec/69 by Klondike EL, which performed reconnaissance geochemical work in 1970. The Minfile report indicates that the claims cover the contact between Paleozoic (?) metamorphic rocks and Klotassin granodiorite (Yukon Minfile 115J 042).

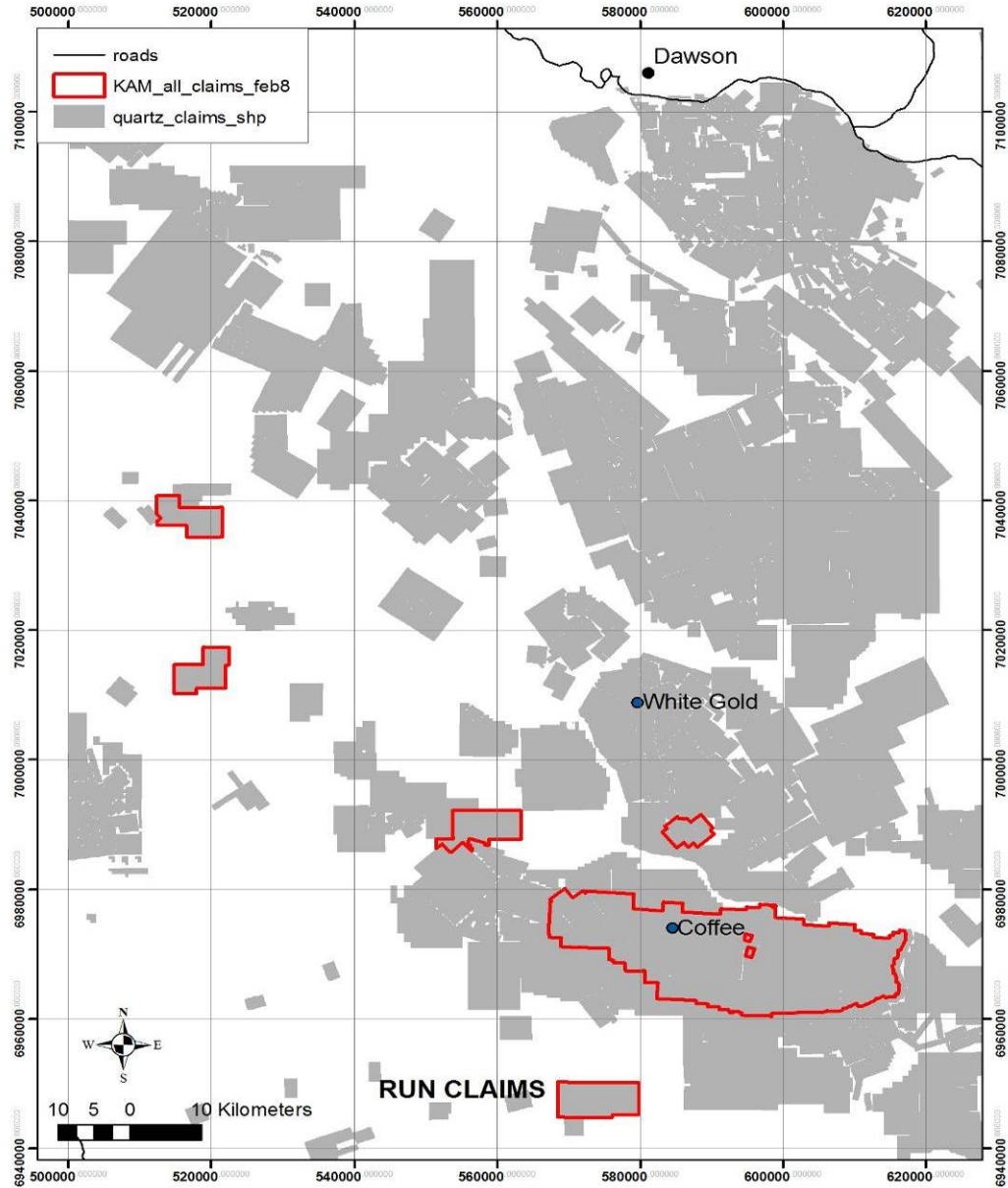
## **6.0 GEOLOGICAL SETTING**

### **6.1 Regional Geology**

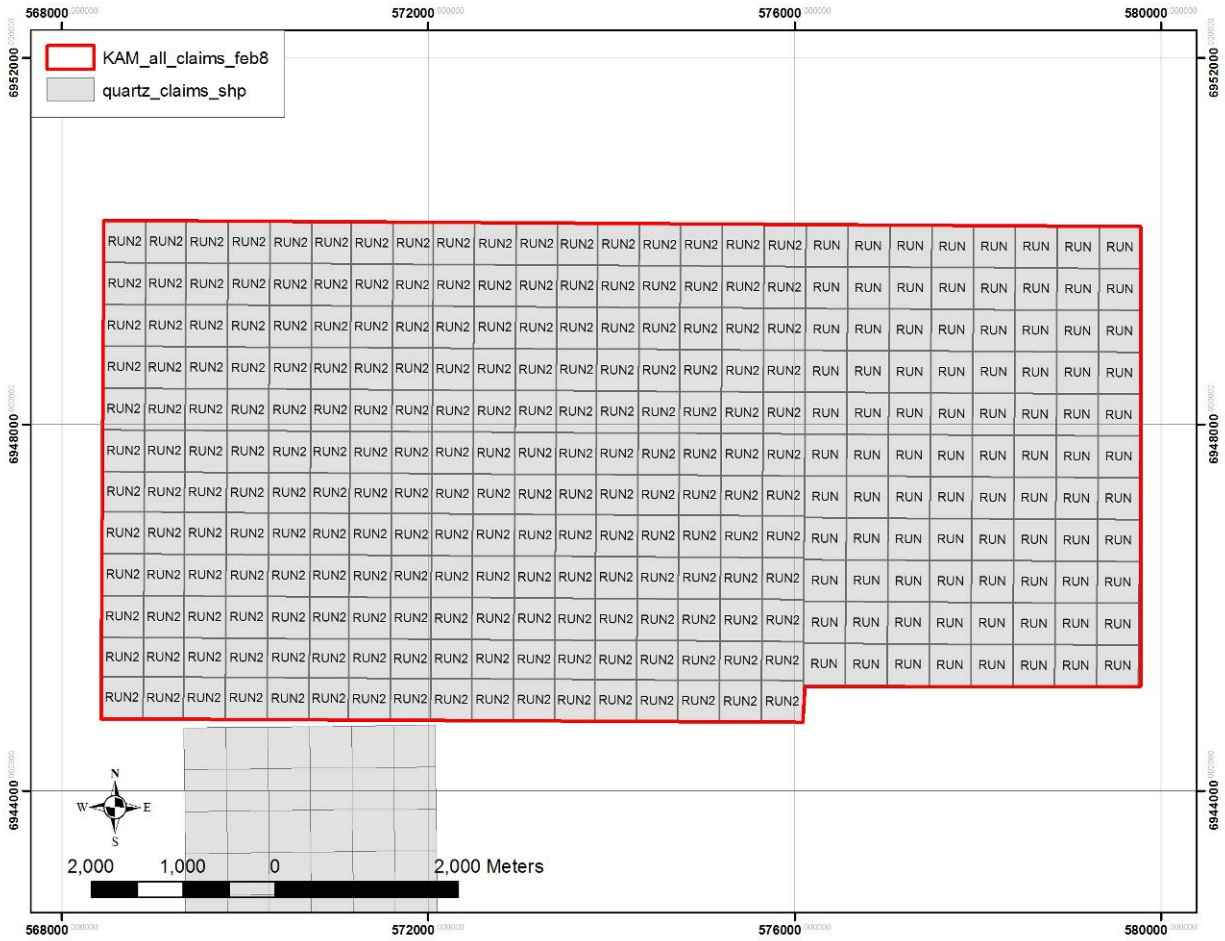
The RUN claims region is underlain by the Yukon-Tanana and Windy-McKinley terranes, which are basement rocks for Mesozoic to Cenozoic plutons and batholiths including those from the Dawson Range intrusive suite (Figure 4). Cretaceous intrusive rocks (Cassiar and Dawson Range suites) are spatially associated with the White Gold and Coffee projects, in addition to a number of other gold-bearing mineral deposits such as Sonora Gulch, Freegold Mountain, Casino and Minto.

The RUN area was initially targeted based on selection of characteristics from regional data that are associated with the White Gold and Coffee Gold environments. Similar to the Coffee claims to the north, the RUN claims are

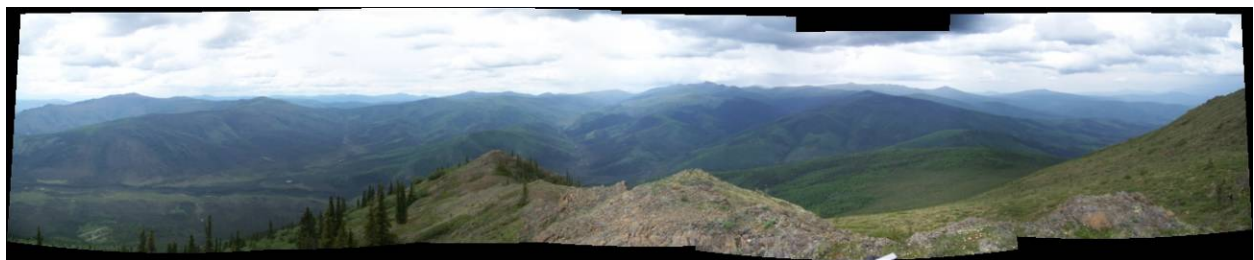
centered on the contact between basement rocks and Dawson Range intrusive rocks. Linear structures seen in the regional aeromagnetic data in addition to discrete magnetic highs are associated with mineral deposits in the region (Figure 5). Moreover, the RUN claims are linked to anomalous regional stream sediment samples (gold; Figure 4) in addition to a Minfile occurrence (115J 042; Figure 5).



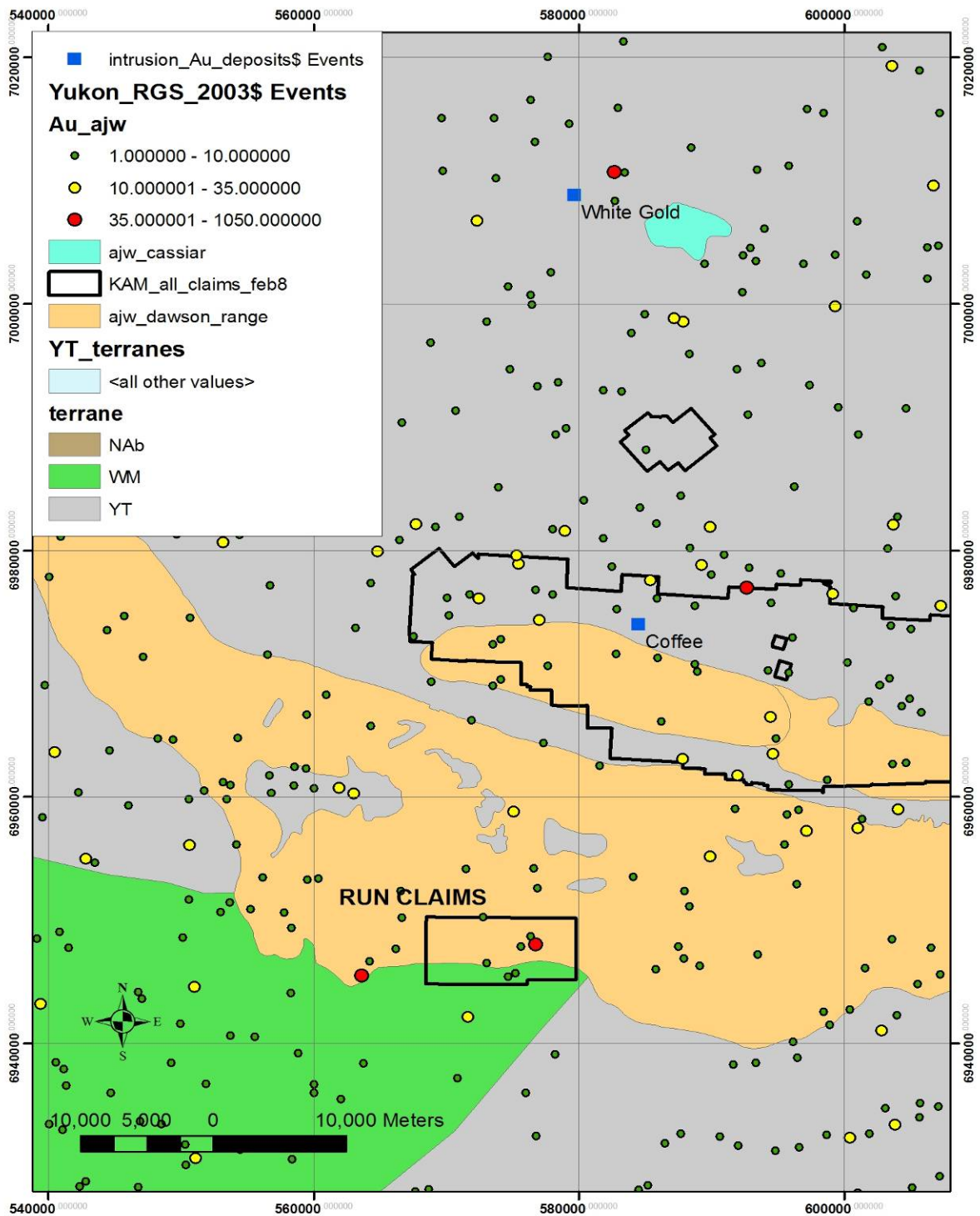
**Figure 1** Location of the RUN claims, 160 km south of Dawson City, west-central Yukon. Coordinate system is UTM NAD83, zone 7.



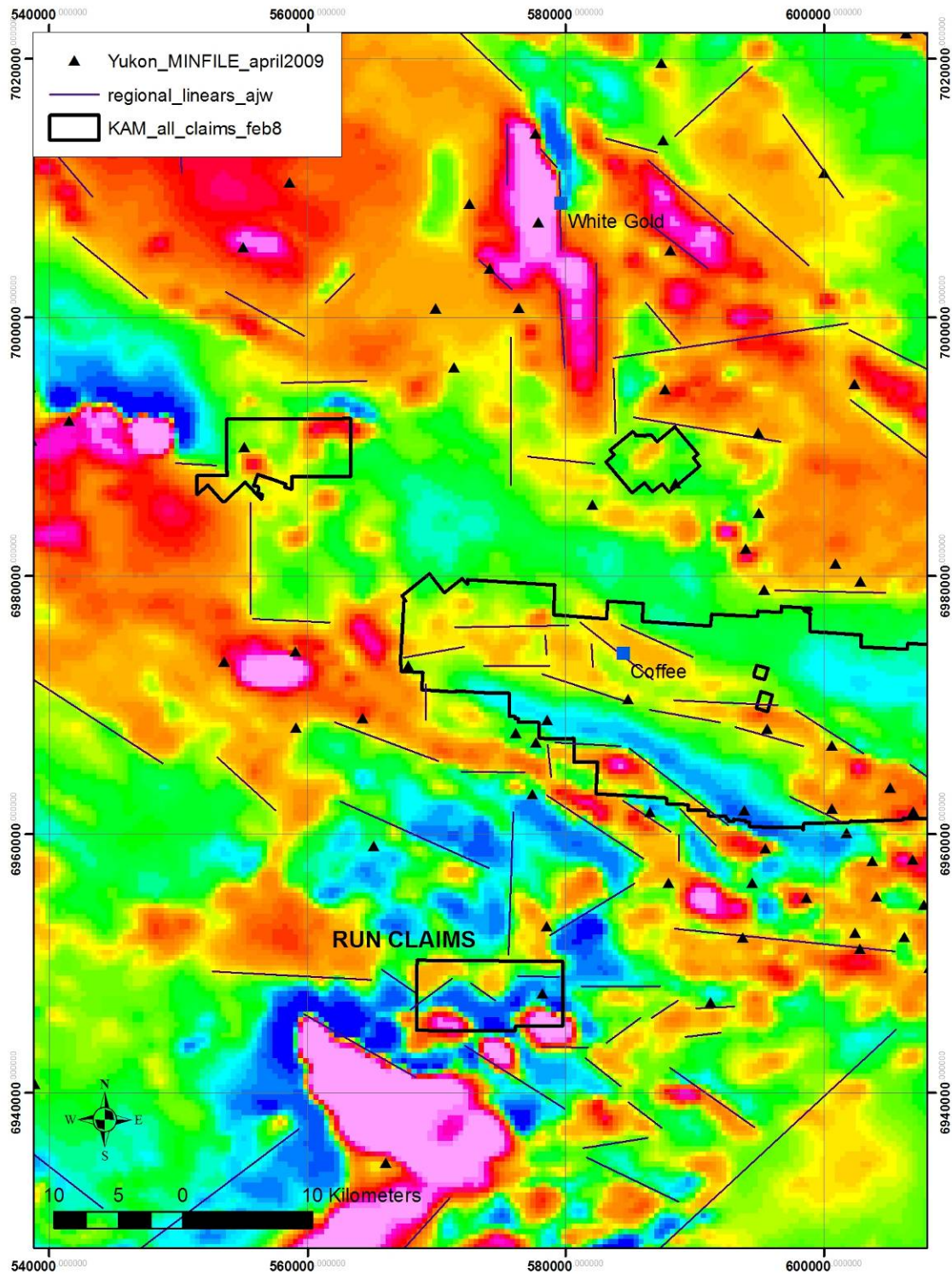
**Figure 2** RUN claims. Coordinate system is UTM NAD83, zone 7.



**Figure 3** Panoramic view of the RUN propert. Photo aimed northwest taken from the southeast corner of the property.



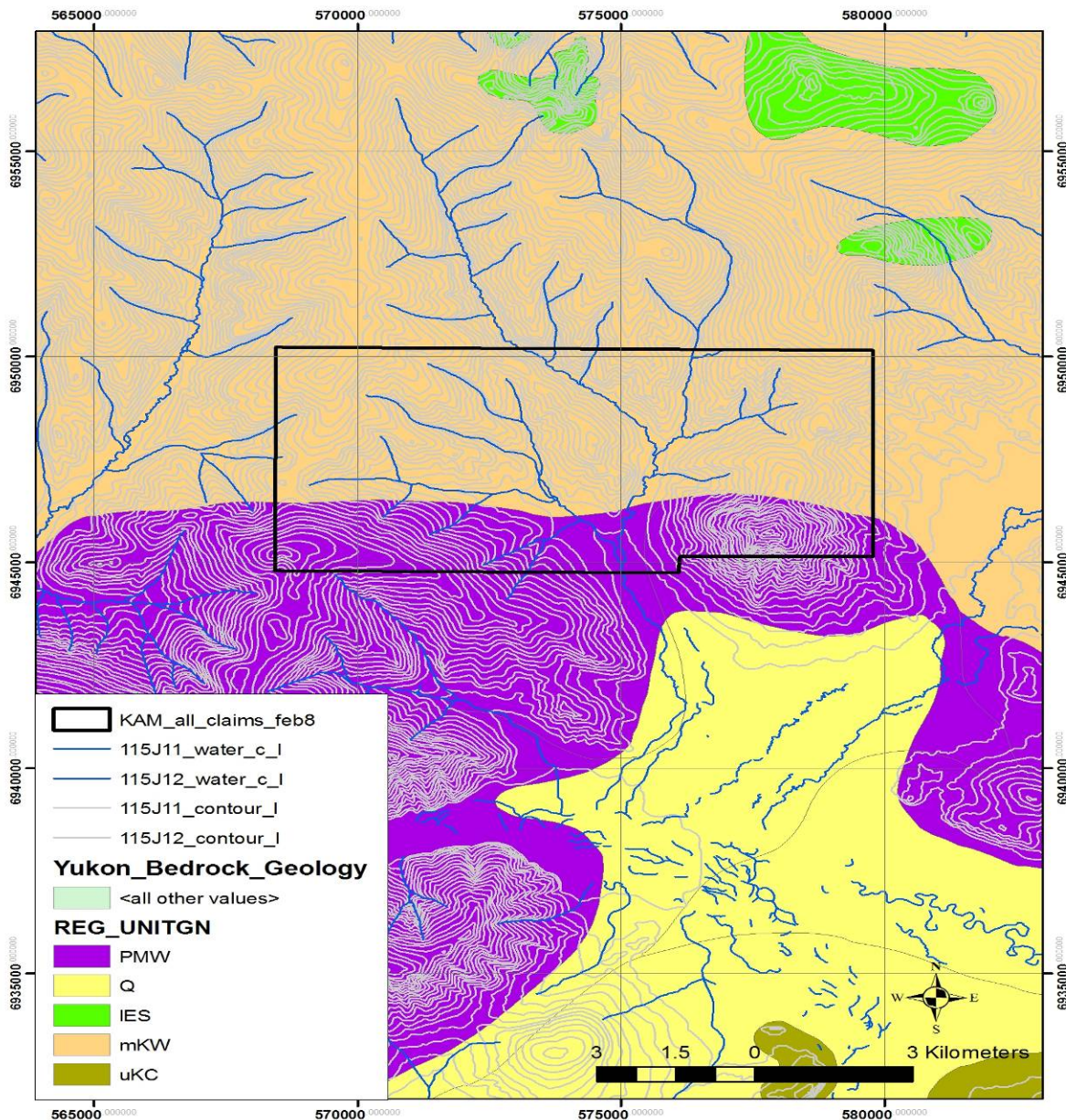
**Figure 4** Regional geologic setting for the RUN claims (from Gordey and Makepeace, 1999). Yukon-Tanana terrane (YT; grey); Windy-McKinley terrane (WM; green); Dawson Range intrusions (orange); Cassiar intrusions (blue). Map is overlain by regional stream sediment data (Au in ppb; Heon, 2003). Coordinate system is UTM NAD83, zone 7.



**Figure 5** Regional aeromagnetic map for the RUN claims. Map is overlain by Minfile occurrences and inferred regional structures. Coordinate system is UTM NAD83, zone 7.

## 6.2 Property Geology

The RUN claims are underlain by Devonian to Cretaceous ultramafic rocks (dunites and harzburgites) in contact with Cretaceous granodiorite/quartz diorite to the north. The interpreted contact strikes east-west (Gordey and Makepeace, 1999; Figure 6). Dun-weathering, foliated pyroxene-olivine bearing rocks were observed during a reconnaissance trip to the southeastern corner of the property (Figure 7). The strike of the foliation was NNN, dipping steeply to the east.



**Figure 6** Property geology map for the RUN claims (from Gordey and Makepeace, 1999). Quaternary alluvium (Q; yellow); Paleogene felsic volcano-sedimentary rocks (IES; green); Cretaceous volcanic rocks (uKC; brown); Cretaceous granodiorite (mKW; orange); Paleozoic/Mesozoic ultramafic rocks (PMW; purple); Coordinate system is UTM NAD83, zone 7.





**Figure 7** Dun-weathering, foliated mafic-ultramafic rocks from the southeast corner of the RUN claims.

## **7.0 WORK PERFORMED/METHODS**

### **7.1 Soil Survey**

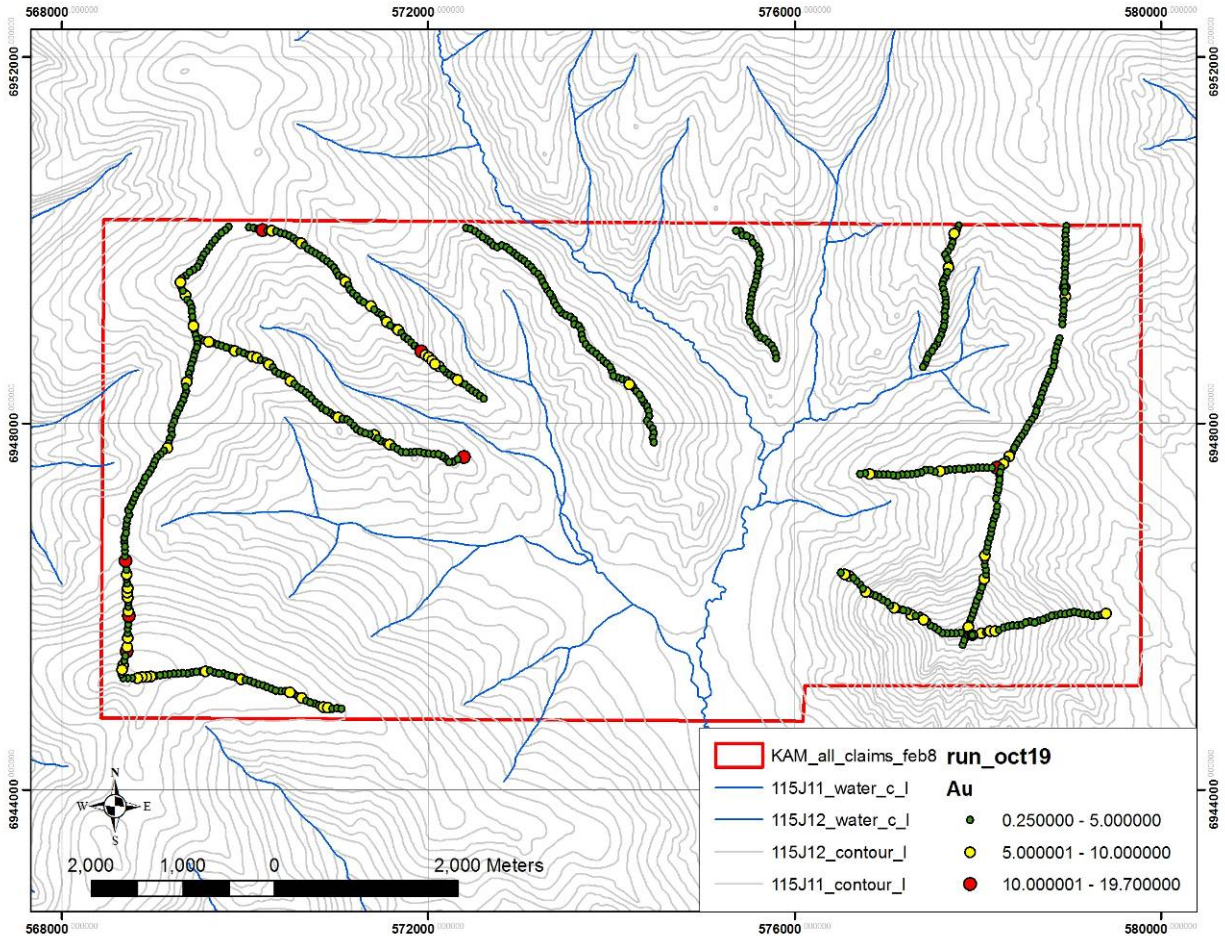
Soil sampling was carried out by Ground Truth Exploration from Dawson City, Yukon. Soil samples were collected along ridge top traverses with sampling stations spaced by 50 metres. 662 samples were collected on the RUN claims during 20 man-days of work (September 5-7, 2010).

Samples were collected using a hand auger to various depths depending on the soil profile. The organic A horizon material was discarded, and augering continued until the C horizon rock chips were encountered, checking for false bottoms on the A horizon profile. Soil samples were collected over intervals varying from 60 to 70 centimetres, with maximum depth not exceeding the 1.25 metre length of the auger. Samples were placed directly in pre-marked bags. A field duplicate sample was collected at a rate of one every twenty-five samples. Sample number, location, depth, and geological parameters were recorded directly into a hand-held computer with a GPS reading of sample location also stored separately as a backup. The sample location was marked with flagging tape and a metal tag on a nearby tree.

The sample information was downloaded from the hand-held computers into spreadsheets, and subsequently integrated into Kaminak's project database. Samples were submitted by the contractor to Acme Laboratories in Vancouver, British Columbia and analysed by ICP-MS for 36 elements (analytical package 15DX).

## 8.0 RESULTS

The soil sample results from the ridge top reconnaissance traverses yielded gold results that range from below detection (<0.5 ppb) to 19.7 ppb Au (Figure 8). These values are not considered anomalous compared to reconnaissance ridge top soil samples from elsewhere in the region. Other elements that may be of interest for base/precious metal exploration such as Cu, Pb, Zn, Ba, As, Hg, Sb, Mo, Ag, W, Bi are not anomalous in the RUN claims dataset (Appendix 2).



**Figure 8** Gold-in-soil values (ppb) obtained during the reconnaissance soil campaign at RUN. Coordinate system is UTM NAD83, zone 7.

## 9.0 RECOMMENDATIONS

The reconnaissance sampling on the RUN claims failed to detect any significant gold-in-soil anomalies greater than 20 ppb Au. Although it is possible that a sizeable anomaly may exist in the lower elevation south-central part of the claims (where no samples were taken), geochemical response will likely be subdued in that area and detection of an anomaly will be problematic. If an anomaly is present between sampled ridge lines, the footprint will be small and not of interest at this time. No further work is recommended for the RUN claims.

## 10.0 COST SUMMARY

The 2010 expenditures on the RUN claims are summarized as follows (Table 1):

**Table 1** Cost summary for work completed in 2010 on the RUN claims.

<b>Item</b>	<b>Cost</b>	<b>Comment</b>
Claim staking	\$71 804.62	Staking contracted to Minconsult and GroundTruth Exploration (292 claims)
Soil sampling	\$16 822.65	Work contracted to GroundTruth Exploration (20 man-days)
Analytical costs	\$12 551.61	662 samples analysed at Acme Labs (Vancouver)
<b>TOTAL</b>	<b>\$101 178.88</b>	

## 11.0 REFERENCES CITED

Gordey, S.P. and Makepeace, A.J. (comp.), 1999: Yukon bedrock geology in Yukon digital geology, S.P. Gordey and A.J. Makepeace (comp.); Geological Survey of Canada Open File D3826 and Exploration and Geological Services Division, Yukon, Indian and Northern Affairs Canada, Open File 1999-1(D).

Heon, D. (compiler), 2003. Yukon Regional Geochemical Database 2003 - Stream sediment analyses. Exploration and Geological Services Division, Yukon Region, Indian and Northern Affairs Canada.

Yukon Minfile 115J 042; <http://ygsftp.gov.yk.ca/httpdocs/minfile/download.html>. (downloaded in 2010)

## 12.0 QUALIFICATIONS

I, Alan John Wainwright, hereby certify that:

1. I am a mineral exploration geologist with offices at Suite 1440 – 625 Howe Street Vancouver BC V6C 2T6.
2. I am a graduate of McGill University (B.Sc., 2000), University of Toronto (M.Sc., 2003) and The University of British Columbia (Ph.D., 2009), all in geology. I have been involved in mineral exploration since 1999.
3. I am a Professional Geoscientist of the Association of Professional Engineers and Geoscientists of the Province of British Columbia, Registration #33841.
4. I have had direct involvement with the exploration program conducted on the area discussed in this report. I am familiar with mineral deposit models and have experience conducting evaluations of mineral properties. I visited the RUN claims on June 5, 2010.

Respectfully submitted,

“Alan J. Wainwright”

### 13.0 APPENDIX 1 – RUN Claims

ClaimName	Grantnumber	ClaimNbr	ExpiryDate	ClaimOwner	Status	OperationRecordingDate	StakingDate	District
RUN	YD59101	1	2011/04/21	Kaminak Gold Corp. - 100%	Active	2010/04/21	2010/04/15	Whitehorse
RUN	YD59102	2	2011/04/21	Kaminak Gold Corp. - 100%	Active	2010/04/21	2010/04/15	Whitehorse
RUN	YD59103	3	2011/04/21	Kaminak Gold Corp. - 100%	Active	2010/04/21	2010/04/15	Whitehorse
RUN	YD59104	4	2011/04/21	Kaminak Gold Corp. - 100%	Active	2010/04/21	2010/04/15	Whitehorse
RUN	YD59105	5	2011/04/21	Kaminak Gold Corp. - 100%	Active	2010/04/21	2010/04/15	Whitehorse
RUN	YD59106	6	2011/04/21	Kaminak Gold Corp. - 100%	Active	2010/04/21	2010/04/15	Whitehorse
RUN	YD59107	7	2011/04/21	Kaminak Gold Corp. - 100%	Active	2010/04/21	2010/04/15	Whitehorse
RUN	YD59108	8	2011/04/21	Kaminak Gold Corp. - 100%	Active	2010/04/21	2010/04/15	Whitehorse
RUN	YD59109	9	2011/04/21	Kaminak Gold Corp. - 100%	Active	2010/04/21	2010/04/15	Whitehorse
RUN	YD59110	10	2011/04/21	Kaminak Gold Corp. - 100%	Active	2010/04/21	2010/04/15	Whitehorse
RUN	YD59111	11	2011/04/21	Kaminak Gold Corp. - 100%	Active	2010/04/21	2010/04/15	Whitehorse
RUN	YD59112	12	2011/04/21	Kaminak Gold Corp. - 100%	Active	2010/04/21	2010/04/15	Whitehorse
RUN	YD59113	13	2011/04/21	Kaminak Gold Corp. - 100%	Active	2010/04/21	2010/04/16	Whitehorse
RUN	YD59114	14	2011/04/21	Kaminak Gold Corp. - 100%	Active	2010/04/21	2010/04/16	Whitehorse
RUN	YD59115	15	2011/04/21	Kaminak Gold Corp. - 100%	Active	2010/04/21	2010/04/16	Whitehorse
RUN	YD59116	16	2011/04/21	Kaminak Gold Corp. - 100%	Active	2010/04/21	2010/04/16	Whitehorse
RUN	YD59117	17	2011/04/21	Kaminak Gold Corp. - 100%	Active	2010/04/21	2010/04/16	Whitehorse
RUN	YD59118	18	2011/04/21	Kaminak Gold Corp. - 100%	Active	2010/04/21	2010/04/16	Whitehorse
RUN	YD59119	19	2011/04/21	Kaminak Gold Corp. - 100%	Active	2010/04/21	2010/04/16	Whitehorse
RUN	YD59120	20	2011/04/21	Kaminak Gold Corp. - 100%	Active	2010/04/21	2010/04/16	Whitehorse
RUN	YD59121	21	2011/04/21	Kaminak Gold Corp. - 100%	Active	2010/04/21	2010/04/16	Whitehorse
RUN	YD59122	22	2011/04/21	Kaminak Gold Corp. - 100%	Active	2010/04/21	2010/04/16	Whitehorse
RUN	YD59123	23	2011/04/21	Kaminak Gold Corp. - 100%	Active	2010/04/21	2010/04/16	Whitehorse
RUN	YD59124	24	2011/04/21	Kaminak Gold Corp. - 100%	Active	2010/04/21	2010/04/16	Whitehorse
RUN	YD59125	25	2011/04/21	Kaminak Gold Corp. - 100%	Active	2010/04/21	2010/04/15	Whitehorse
RUN	YD59126	26	2011/04/21	Kaminak Gold Corp. - 100%	Active	2010/04/21	2010/04/15	Whitehorse

ClaimName	Grantnumber	ClaimNbr	ExpiryDate	ClaimOwner	Status	OperationRecordingDate	StakingDate	District
RUN	YD59127	27	2011/04/21	Kaminak Gold Corp. - 100%	Active	2010/04/21	2010/04/15	Whitehorse
RUN	YD59128	28	2011/04/21	Kaminak Gold Corp. - 100%	Active	2010/04/21	2010/04/15	Whitehorse
RUN	YD59129	29	2011/04/21	Kaminak Gold Corp. - 100%	Active	2010/04/21	2010/04/15	Whitehorse
RUN	YD59130	30	2011/04/21	Kaminak Gold Corp. - 100%	Active	2010/04/21	2010/04/15	Whitehorse
RUN	YD59131	31	2011/04/21	Kaminak Gold Corp. - 100%	Active	2010/04/21	2010/04/15	Whitehorse
RUN	YD59132	32	2011/04/21	Kaminak Gold Corp. - 100%	Active	2010/04/21	2010/04/15	Whitehorse
RUN	YD59133	33	2011/04/21	Kaminak Gold Corp. - 100%	Active	2010/04/21	2010/04/15	Whitehorse
RUN	YD59134	34	2011/04/21	Kaminak Gold Corp. - 100%	Active	2010/04/21	2010/04/15	Whitehorse
RUN	YD59135	35	2011/04/21	Kaminak Gold Corp. - 100%	Active	2010/04/21	2010/04/16	Whitehorse
RUN	YD59136	36	2011/04/21	Kaminak Gold Corp. - 100%	Active	2010/04/21	2010/04/16	Whitehorse
RUN	YD59137	37	2011/04/21	Kaminak Gold Corp. - 100%	Active	2010/04/21	2010/04/16	Whitehorse
RUN	YD59138	38	2011/04/21	Kaminak Gold Corp. - 100%	Active	2010/04/21	2010/04/16	Whitehorse
RUN	YD59139	39	2011/04/21	Kaminak Gold Corp. - 100%	Active	2010/04/21	2010/04/16	Whitehorse
RUN	YD59140	40	2011/04/21	Kaminak Gold Corp. - 100%	Active	2010/04/21	2010/04/16	Whitehorse
RUN	YD59141	41	2011/04/21	Kaminak Gold Corp. - 100%	Active	2010/04/21	2010/04/16	Whitehorse
RUN	YD59142	42	2011/04/21	Kaminak Gold Corp. - 100%	Active	2010/04/21	2010/04/16	Whitehorse
RUN	YD59143	43	2011/04/21	Kaminak Gold Corp. - 100%	Active	2010/04/21	2010/04/16	Whitehorse
RUN	YD59144	44	2011/04/21	Kaminak Gold Corp. - 100%	Active	2010/04/21	2010/04/16	Whitehorse
RUN	YD59145	45	2011/04/21	Kaminak Gold Corp. - 100%	Active	2010/04/21	2010/04/16	Whitehorse
RUN	YD59146	46	2011/04/21	Kaminak Gold Corp. - 100%	Active	2010/04/21	2010/04/16	Whitehorse
RUN	YD59147	47	2011/04/21	Kaminak Gold Corp. - 100%	Active	2010/04/21	2010/04/15	Whitehorse
RUN	YD59148	48	2011/04/21	Kaminak Gold Corp. - 100%	Active	2010/04/21	2010/04/15	Whitehorse
RUN	YD59149	49	2011/04/21	Kaminak Gold Corp. - 100%	Active	2010/04/21	2010/04/15	Whitehorse
RUN	YD59150	50	2011/04/21	Kaminak Gold Corp. - 100%	Active	2010/04/21	2010/04/15	Whitehorse
RUN	YD59151	51	2011/04/21	Kaminak Gold Corp. - 100%	Active	2010/04/21	2010/04/15	Whitehorse
RUN	YD59152	52	2011/04/21	Kaminak Gold Corp. - 100%	Active	2010/04/21	2010/04/15	Whitehorse
RUN	YD59153	53	2011/04/21	Kaminak Gold Corp. - 100%	Active	2010/04/21	2010/04/15	Whitehorse
RUN	YD59154	54	2011/04/21	Kaminak Gold Corp. - 100%	Active	2010/04/21	2010/04/15	Whitehorse
RUN	YD59155	55	2011/04/21	Kaminak Gold Corp. - 100%	Active	2010/04/21	2010/04/15	Whitehorse

ClaimName	Grantnumber	ClaimNbr	ExpiryDate	ClaimOwner	Status	OperationRecordingDate	StakingDate	District
RUN	YD59156	56	2011/04/21	Kaminak Gold Corp. - 100%	Active	2010/04/21	2010/04/15	Whitehorse
RUN	YD59157	57	2011/04/21	Kaminak Gold Corp. - 100%	Active	2010/04/21	2010/04/15	Whitehorse
RUN	YD59158	58	2011/04/21	Kaminak Gold Corp. - 100%	Active	2010/04/21	2010/04/15	Whitehorse
RUN	YD59159	59	2011/04/21	Kaminak Gold Corp. - 100%	Active	2010/04/21	2010/04/14	Whitehorse
RUN	YD59160	60	2011/04/21	Kaminak Gold Corp. - 100%	Active	2010/04/21	2010/04/14	Whitehorse
RUN	YD59161	61	2011/04/21	Kaminak Gold Corp. - 100%	Active	2010/04/21	2010/04/14	Whitehorse
RUN	YD59162	62	2011/04/21	Kaminak Gold Corp. - 100%	Active	2010/04/21	2010/04/14	Whitehorse
RUN	YD59163	63	2011/04/21	Kaminak Gold Corp. - 100%	Active	2010/04/21	2010/04/14	Whitehorse
RUN	YD59164	64	2011/04/21	Kaminak Gold Corp. - 100%	Active	2010/04/21	2010/04/14	Whitehorse
RUN	YD59165	65	2011/04/21	Kaminak Gold Corp. - 100%	Active	2010/04/21	2010/04/14	Whitehorse
RUN	YD59166	66	2011/04/21	Kaminak Gold Corp. - 100%	Active	2010/04/21	2010/04/14	Whitehorse
RUN	YD59167	67	2011/04/21	Kaminak Gold Corp. - 100%	Active	2010/04/21	2010/04/15	Whitehorse
RUN	YD59168	68	2011/04/21	Kaminak Gold Corp. - 100%	Active	2010/04/21	2010/04/15	Whitehorse
RUN	YD59169	69	2011/04/21	Kaminak Gold Corp. - 100%	Active	2010/04/21	2010/04/15	Whitehorse
RUN	YD59170	70	2011/04/21	Kaminak Gold Corp. - 100%	Active	2010/04/21	2010/04/15	Whitehorse
RUN	YD59171	71	2011/04/21	Kaminak Gold Corp. - 100%	Active	2010/04/21	2010/04/15	Whitehorse
RUN	YD59172	72	2011/04/21	Kaminak Gold Corp. - 100%	Active	2010/04/21	2010/04/15	Whitehorse
RUN	YD59173	73	2011/04/21	Kaminak Gold Corp. - 100%	Active	2010/04/21	2010/04/15	Whitehorse
RUN	YD59174	74	2011/04/21	Kaminak Gold Corp. - 100%	Active	2010/04/21	2010/04/15	Whitehorse
RUN	YD59175	75	2011/04/21	Kaminak Gold Corp. - 100%	Active	2010/04/21	2010/04/15	Whitehorse
RUN	YD59176	76	2011/04/21	Kaminak Gold Corp. - 100%	Active	2010/04/21	2010/04/15	Whitehorse
RUN	YD59177	77	2011/04/21	Kaminak Gold Corp. - 100%	Active	2010/04/21	2010/04/15	Whitehorse
RUN	YD59178	78	2011/04/21	Kaminak Gold Corp. - 100%	Active	2010/04/21	2010/04/15	Whitehorse
RUN	YD59179	79	2011/04/21	Kaminak Gold Corp. - 100%	Active	2010/04/21	2010/04/14	Whitehorse
RUN	YD59180	80	2011/04/21	Kaminak Gold Corp. - 100%	Active	2010/04/21	2010/04/14	Whitehorse
RUN	YD59181	81	2011/04/21	Kaminak Gold Corp. - 100%	Active	2010/04/21	2010/04/14	Whitehorse
RUN	YD59182	82	2011/04/21	Kaminak Gold Corp. - 100%	Active	2010/04/21	2010/04/14	Whitehorse
RUN	YD59183	83	2011/04/21	Kaminak Gold Corp. - 100%	Active	2010/04/21	2010/04/14	Whitehorse
RUN	YD59184	84	2011/04/21	Kaminak Gold Corp. - 100%	Active	2010/04/21	2010/04/14	Whitehorse

ClaimName	Grantnumber	ClaimNbr	ExpiryDate	ClaimOwner	Status	OperationRecordingDate	StakingDate	District
RUN	YD59185	85	2011/04/21	Kaminak Gold Corp. - 100%	Active	2010/04/21	2010/04/14	Whitehorse
RUN	YD59186	86	2011/04/21	Kaminak Gold Corp. - 100%	Active	2010/04/21	2010/04/14	Whitehorse
RUN	YD59187	87	2011/04/21	Kaminak Gold Corp. - 100%	Active	2010/04/21	2010/04/14	Whitehorse
RUN	YD59188	88	2011/04/21	Kaminak Gold Corp. - 100%	Active	2010/04/21	2010/04/14	Whitehorse
RUN2	YD50083	1	2011/06/24	Kaminak Gold Corp. - 100%	Active	2010/06/24	2010/06/03	Whitehorse
RUN2	YD50084	2	2011/06/24	Kaminak Gold Corp. - 100%	Active	2010/06/24	2010/06/03	Whitehorse
RUN2	YD50085	3	2011/06/24	Kaminak Gold Corp. - 100%	Active	2010/06/24	2010/06/03	Whitehorse
RUN2	YD50086	4	2011/06/24	Kaminak Gold Corp. - 100%	Active	2010/06/24	2010/06/03	Whitehorse
RUN2	YD50087	5	2011/06/24	Kaminak Gold Corp. - 100%	Active	2010/06/24	2010/06/03	Whitehorse
RUN2	YD50088	6	2011/06/24	Kaminak Gold Corp. - 100%	Active	2010/06/24	2010/06/03	Whitehorse
RUN2	YD50089	7	2011/06/24	Kaminak Gold Corp. - 100%	Active	2010/06/24	2010/06/03	Whitehorse
RUN2	YD50090	8	2011/06/24	Kaminak Gold Corp. - 100%	Active	2010/06/24	2010/06/03	Whitehorse
RUN2	YD50091	9	2011/06/24	Kaminak Gold Corp. - 100%	Active	2010/06/24	2010/06/03	Whitehorse
RUN2	YD50092	10	2011/06/24	Kaminak Gold Corp. - 100%	Active	2010/06/24	2010/06/03	Whitehorse
RUN2	YD50093	11	2011/06/24	Kaminak Gold Corp. - 100%	Active	2010/06/24	2010/06/03	Whitehorse
RUN2	YD50094	12	2011/06/24	Kaminak Gold Corp. - 100%	Active	2010/06/24	2010/06/03	Whitehorse
RUN2	YD50095	13	2011/06/24	Kaminak Gold Corp. - 100%	Active	2010/06/24	2010/06/02	Whitehorse
RUN2	YD50096	14	2011/06/24	Kaminak Gold Corp. - 100%	Active	2010/06/24	2010/06/02	Whitehorse
RUN2	YD50097	15	2011/06/24	Kaminak Gold Corp. - 100%	Active	2010/06/24	2010/06/02	Whitehorse
RUN2	YD50098	16	2011/06/24	Kaminak Gold Corp. - 100%	Active	2010/06/24	2010/06/02	Whitehorse
RUN2	YD50099	17	2011/06/24	Kaminak Gold Corp. - 100%	Active	2010/06/24	2010/06/02	Whitehorse
RUN2	YD50100	18	2011/06/24	Kaminak Gold Corp. - 100%	Active	2010/06/24	2010/06/02	Whitehorse
RUN2	YD50101	19	2011/06/24	Kaminak Gold Corp. - 100%	Active	2010/06/24	2010/06/02	Whitehorse
RUN2	YD50102	20	2011/06/24	Kaminak Gold Corp. - 100%	Active	2010/06/24	2010/06/02	Whitehorse
RUN2	YD50103	21	2011/06/24	Kaminak Gold Corp. - 100%	Active	2010/06/24	2010/06/02	Whitehorse
RUN2	YD50104	22	2011/06/24	Kaminak Gold Corp. - 100%	Active	2010/06/24	2010/06/02	Whitehorse
RUN2	YD50105	23	2011/06/24	Kaminak Gold Corp. - 100%	Active	2010/06/24	2010/06/02	Whitehorse
RUN2	YD50106	24	2011/06/24	Kaminak Gold Corp. - 100%	Active	2010/06/24	2010/06/02	Whitehorse
RUN2	YD50107	25	2011/06/24	Kaminak Gold Corp. - 100%	Active	2010/06/24	2010/06/02	Whitehorse

ClaimName	Grantnumber	ClaimNbr	ExpiryDate	ClaimOwner	Status	OperationRecordingDate	StakingDate	District
RUN2	YD50108	26	2011/06/24	Kaminak Gold Corp. - 100%	Active	2010/06/24	2010/06/02	Whitehorse
RUN2	YD50109	27	2011/06/24	Kaminak Gold Corp. - 100%	Active	2010/06/24	2010/06/02	Whitehorse
RUN2	YD50110	28	2011/06/24	Kaminak Gold Corp. - 100%	Active	2010/06/24	2010/06/02	Whitehorse
RUN2	YD50111	29	2011/06/24	Kaminak Gold Corp. - 100%	Active	2010/06/24	2010/06/02	Whitehorse
RUN2	YD50112	30	2011/06/24	Kaminak Gold Corp. - 100%	Active	2010/06/24	2010/06/02	Whitehorse
RUN2	YD50113	31	2011/06/24	Kaminak Gold Corp. - 100%	Active	2010/06/24	2010/06/02	Whitehorse
RUN2	YD50114	32	2011/06/24	Kaminak Gold Corp. - 100%	Active	2010/06/24	2010/06/02	Whitehorse
RUN2	YD50115	33	2011/06/24	Kaminak Gold Corp. - 100%	Active	2010/06/24	2010/06/02	Whitehorse
RUN2	YD50116	34	2011/06/24	Kaminak Gold Corp. - 100%	Active	2010/06/24	2010/06/02	Whitehorse
RUN2	YD50117	35	2011/06/24	Kaminak Gold Corp. - 100%	Active	2010/06/24	2010/06/03	Whitehorse
RUN2	YD50118	36	2011/06/24	Kaminak Gold Corp. - 100%	Active	2010/06/24	2010/06/03	Whitehorse
RUN2	YD50119	37	2011/06/24	Kaminak Gold Corp. - 100%	Active	2010/06/24	2010/06/03	Whitehorse
RUN2	YD50120	38	2011/06/24	Kaminak Gold Corp. - 100%	Active	2010/06/24	2010/06/03	Whitehorse
RUN2	YD50121	39	2011/06/24	Kaminak Gold Corp. - 100%	Active	2010/06/24	2010/06/03	Whitehorse
RUN2	YD50122	40	2011/06/24	Kaminak Gold Corp. - 100%	Active	2010/06/24	2010/06/03	Whitehorse
RUN2	YD50123	41	2011/06/24	Kaminak Gold Corp. - 100%	Active	2010/06/24	2010/06/03	Whitehorse
RUN2	YD50124	42	2011/06/24	Kaminak Gold Corp. - 100%	Active	2010/06/24	2010/06/03	Whitehorse
RUN2	YD50125	43	2011/06/24	Kaminak Gold Corp. - 100%	Active	2010/06/24	2010/06/03	Whitehorse
RUN2	YD50126	44	2011/06/24	Kaminak Gold Corp. - 100%	Active	2010/06/24	2010/06/03	Whitehorse
RUN2	YD50127	45	2011/06/24	Kaminak Gold Corp. - 100%	Active	2010/06/24	2010/06/03	Whitehorse
RUN2	YD50128	46	2011/06/24	Kaminak Gold Corp. - 100%	Active	2010/06/24	2010/06/03	Whitehorse
RUN2	YD50129	47	2011/06/24	Kaminak Gold Corp. - 100%	Active	2010/06/24	2010/06/02	Whitehorse
RUN2	YD50130	48	2011/06/24	Kaminak Gold Corp. - 100%	Active	2010/06/24	2010/06/02	Whitehorse
RUN2	YD50131	49	2011/06/24	Kaminak Gold Corp. - 100%	Active	2010/06/24	2010/06/02	Whitehorse
RUN2	YD50132	50	2011/06/24	Kaminak Gold Corp. - 100%	Active	2010/06/24	2010/06/02	Whitehorse
RUN2	YD50133	51	2011/06/24	Kaminak Gold Corp. - 100%	Active	2010/06/24	2010/06/02	Whitehorse
RUN2	YD50134	52	2011/06/24	Kaminak Gold Corp. - 100%	Active	2010/06/24	2010/06/02	Whitehorse
RUN2	YD50135	53	2011/06/24	Kaminak Gold Corp. - 100%	Active	2010/06/24	2010/06/02	Whitehorse
RUN2	YD50136	54	2011/06/24	Kaminak Gold Corp. - 100%	Active	2010/06/24	2010/06/02	Whitehorse



ClaimName	Grantnumber	ClaimNbr	ExpiryDate	ClaimOwner	Status	OperationRecordingDate	StakingDate	District
RUN2	YD50137	55	2011/06/24	Kaminak Gold Corp. - 100%	Active	2010/06/24	2010/06/02	Whitehorse
RUN2	YD50138	56	2011/06/24	Kaminak Gold Corp. - 100%	Active	2010/06/24	2010/06/02	Whitehorse
RUN2	YD50139	57	2011/06/24	Kaminak Gold Corp. - 100%	Active	2010/06/24	2010/06/02	Whitehorse
RUN2	YD50140	58	2011/06/24	Kaminak Gold Corp. - 100%	Active	2010/06/24	2010/06/02	Whitehorse
RUN2	YD50141	59	2011/06/24	Kaminak Gold Corp. - 100%	Active	2010/06/24	2010/06/02	Whitehorse
RUN2	YD50142	60	2011/06/24	Kaminak Gold Corp. - 100%	Active	2010/06/24	2010/06/02	Whitehorse
RUN2	YD50143	61	2011/06/24	Kaminak Gold Corp. - 100%	Active	2010/06/24	2010/06/02	Whitehorse
RUN2	YD50144	62	2011/06/24	Kaminak Gold Corp. - 100%	Active	2010/06/24	2010/06/02	Whitehorse
RUN2	YD50145	63	2011/06/24	Kaminak Gold Corp. - 100%	Active	2010/06/24	2010/06/02	Whitehorse
RUN2	YD50146	64	2011/06/24	Kaminak Gold Corp. - 100%	Active	2010/06/24	2010/06/02	Whitehorse
RUN2	YD50147	65	2011/06/24	Kaminak Gold Corp. - 100%	Active	2010/06/24	2010/06/02	Whitehorse
RUN2	YD50148	66	2011/06/24	Kaminak Gold Corp. - 100%	Active	2010/06/24	2010/06/02	Whitehorse
RUN2	YD50149	67	2011/06/24	Kaminak Gold Corp. - 100%	Active	2010/06/24	2010/06/02	Whitehorse
RUN2	YD50150	68	2011/06/24	Kaminak Gold Corp. - 100%	Active	2010/06/24	2010/06/02	Whitehorse
RUN2	YD50151	69	2011/06/24	Kaminak Gold Corp. - 100%	Active	2010/06/24	2010/06/03	Whitehorse
RUN2	YD50152	70	2011/06/24	Kaminak Gold Corp. - 100%	Active	2010/06/24	2010/06/03	Whitehorse
RUN2	YD50153	71	2011/06/24	Kaminak Gold Corp. - 100%	Active	2010/06/24	2010/06/03	Whitehorse
RUN2	YD50154	72	2011/06/24	Kaminak Gold Corp. - 100%	Active	2010/06/24	2010/06/03	Whitehorse
RUN2	YD50155	73	2011/06/24	Kaminak Gold Corp. - 100%	Active	2010/06/24	2010/06/03	Whitehorse
RUN2	YD50156	74	2011/06/24	Kaminak Gold Corp. - 100%	Active	2010/06/24	2010/06/03	Whitehorse
RUN2	YD50157	75	2011/06/24	Kaminak Gold Corp. - 100%	Active	2010/06/24	2010/06/03	Whitehorse
RUN2	YD50158	76	2011/06/24	Kaminak Gold Corp. - 100%	Active	2010/06/24	2010/06/03	Whitehorse
RUN2	YD50159	77	2011/06/24	Kaminak Gold Corp. - 100%	Active	2010/06/24	2010/06/03	Whitehorse
RUN2	YD50160	78	2011/06/24	Kaminak Gold Corp. - 100%	Active	2010/06/24	2010/06/03	Whitehorse
RUN2	YD50161	79	2011/06/24	Kaminak Gold Corp. - 100%	Active	2010/06/24	2010/06/03	Whitehorse
RUN2	YD50162	80	2011/06/24	Kaminak Gold Corp. - 100%	Active	2010/06/24	2010/06/03	Whitehorse
RUN2	YD50163	81	2011/06/24	Reid Gavin - 100%	Active	2010/06/24	2010/06/03	Whitehorse
RUN2	YD50164	82	2011/06/24	Reid Gavin - 100%	Active	2010/06/24	2010/06/03	Whitehorse
RUN2	YD50165	83	2011/06/24	Reid Gavin - 100%	Active	2010/06/24	2010/06/03	Whitehorse

ClaimName	Grantnumber	ClaimNbr	ExpiryDate	ClaimOwner	Status	OperationRecordingDate	StakingDate	District
RUN2	YD50166	84	2011/06/24	Reid Gavin - 100%	Active	2010/06/24	2010/06/03	Whitehorse
RUN2	YD50167	85	2011/06/24	Reid Gavin - 100%	Active	2010/06/24	2010/06/03	Whitehorse
RUN2	YD50168	86	2011/06/24	Reid Gavin - 100%	Active	2010/06/24	2010/06/03	Whitehorse
RUN2	YD50169	87	2011/06/24	Reid Gavin - 100%	Active	2010/06/24	2010/06/03	Whitehorse
RUN2	YD50170	88	2011/06/24	Reid Gavin - 100%	Active	2010/06/24	2010/06/03	Whitehorse
RUN2	YD50171	89	2011/06/24	Reid Gavin - 100%	Active	2010/06/24	2010/06/03	Whitehorse
RUN2	YD50172	90	2011/06/24	Reid Gavin - 100%	Active	2010/06/24	2010/06/03	Whitehorse
RUN2	YD50173	91	2011/06/24	Reid Gavin - 100%	Active	2010/06/24	2010/06/03	Whitehorse
RUN2	YD50174	92	2011/06/24	Reid Gavin - 100%	Active	2010/06/24	2010/06/03	Whitehorse
RUN2	YD50175	93	2011/06/24	Kaminak Gold Corp. - 100%	Active	2010/06/24	2010/06/01	Whitehorse
RUN2	YD50176	94	2011/06/24	Kaminak Gold Corp. - 100%	Active	2010/06/24	2010/06/01	Whitehorse
RUN2	YD50177	95	2011/06/24	Kaminak Gold Corp. - 100%	Active	2010/06/24	2010/06/01	Whitehorse
RUN2	YD50178	96	2011/06/24	Kaminak Gold Corp. - 100%	Active	2010/06/24	2010/06/01	Whitehorse
RUN2	YD50179	97	2011/06/24	Kaminak Gold Corp. - 100%	Active	2010/06/24	2010/06/01	Whitehorse
RUN2	YD50180	98	2011/06/24	Kaminak Gold Corp. - 100%	Active	2010/06/24	2010/06/01	Whitehorse
RUN2	YD50181	99	2011/06/24	Kaminak Gold Corp. - 100%	Active	2010/06/24	2010/06/01	Whitehorse
RUN2	YD50182	100	2011/06/24	Kaminak Gold Corp. - 100%	Active	2010/06/24	2010/06/01	Whitehorse
RUN2	YD50183	101	2011/06/24	Kaminak Gold Corp. - 100%	Active	2010/06/24	2010/06/01	Whitehorse
RUN2	YD50184	102	2011/06/24	Kaminak Gold Corp. - 100%	Active	2010/06/24	2010/06/01	Whitehorse
RUN2	YD50185	103	2011/06/24	Kaminak Gold Corp. - 100%	Active	2010/06/24	2010/06/01	Whitehorse
RUN2	YD50186	104	2011/06/24	Kaminak Gold Corp. - 100%	Active	2010/06/24	2010/06/01	Whitehorse
RUN2	YD50187	105	2011/06/24	Kaminak Gold Corp. - 100%	Active	2010/06/24	2010/06/01	Whitehorse
RUN2	YD50188	106	2011/06/24	Kaminak Gold Corp. - 100%	Active	2010/06/24	2010/06/01	Whitehorse
RUN2	YD50189	107	2011/06/24	Kaminak Gold Corp. - 100%	Active	2010/06/24	2010/06/01	Whitehorse
RUN2	YD50190	108	2011/06/24	Kaminak Gold Corp. - 100%	Active	2010/06/24	2010/06/01	Whitehorse
RUN2	YD50191	109	2011/06/24	Kaminak Gold Corp. - 100%	Active	2010/06/24	2010/06/01	Whitehorse
RUN2	YD50192	110	2011/06/24	Kaminak Gold Corp. - 100%	Active	2010/06/24	2010/06/01	Whitehorse
RUN2	YD50193	111	2011/06/24	Kaminak Gold Corp. - 100%	Active	2010/06/24	2010/06/01	Whitehorse
RUN2	YD50194	112	2011/06/24	Kaminak Gold Corp. - 100%	Active	2010/06/24	2010/06/01	Whitehorse

ClaimName	Grantnumber	ClaimNbr	ExpiryDate	ClaimOwner	Status	OperationRecordingDate	StakingDate	District
RUN2	YD50195	113	2011/06/24	Kaminak Gold Corp. - 100%	Active	2010/06/24	2010/06/01	Whitehorse
RUN2	YD50196	114	2011/06/24	Kaminak Gold Corp. - 100%	Active	2010/06/24	2010/06/01	Whitehorse
RUN2	YD50197	115	2011/06/24	Kaminak Gold Corp. - 100%	Active	2010/06/24	2010/06/01	Whitehorse
RUN2	YD50198	116	2011/06/24	Kaminak Gold Corp. - 100%	Active	2010/06/24	2010/06/01	Whitehorse
RUN2	YD50199	117	2011/06/24	Kaminak Gold Corp. - 100%	Active	2010/06/24	2010/06/01	Whitehorse
RUN2	YD50200	118	2011/06/24	Kaminak Gold Corp. - 100%	Active	2010/06/24	2010/06/01	Whitehorse
RUN2	YD50201	119	2011/06/24	Kaminak Gold Corp. - 100%	Active	2010/06/24	2010/06/01	Whitehorse
RUN2	YD50202	120	2011/06/24	Kaminak Gold Corp. - 100%	Active	2010/06/24	2010/06/01	Whitehorse
RUN2	YD50203	121	2011/06/24	Kaminak Gold Corp. - 100%	Active	2010/06/24	2010/06/01	Whitehorse
RUN2	YD50204	122	2011/06/24	Kaminak Gold Corp. - 100%	Active	2010/06/24	2010/06/01	Whitehorse
RUN2	YD50205	123	2011/06/24	Kaminak Gold Corp. - 100%	Active	2010/06/24	2010/06/01	Whitehorse
RUN2	YD50206	124	2011/06/24	Kaminak Gold Corp. - 100%	Active	2010/06/24	2010/06/01	Whitehorse
RUN2	YD50207	125	2011/06/24	Kaminak Gold Corp. - 100%	Active	2010/06/24	2010/06/01	Whitehorse
RUN2	YD50208	126	2011/06/24	Kaminak Gold Corp. - 100%	Active	2010/06/24	2010/06/01	Whitehorse
RUN2	YD50209	127	2011/06/24	Kaminak Gold Corp. - 100%	Active	2010/06/24	2010/06/01	Whitehorse
RUN2	YD50210	128	2011/06/24	Kaminak Gold Corp. - 100%	Active	2010/06/24	2010/06/01	Whitehorse
RUN2	YD50211	129	2011/06/24	Kaminak Gold Corp. - 100%	Active	2010/06/24	2010/06/01	Whitehorse
RUN2	YD50212	130	2011/06/24	Kaminak Gold Corp. - 100%	Active	2010/06/24	2010/06/01	Whitehorse
RUN2	YD50213	131	2011/06/24	Kaminak Gold Corp. - 100%	Active	2010/06/24	2010/06/01	Whitehorse
RUN2	YD50214	132	2011/06/24	Kaminak Gold Corp. - 100%	Active	2010/06/24	2010/06/01	Whitehorse
RUN2	YD50215	133	2011/06/24	Reid Gavin - 100%	Active	2010/06/24	2010/06/02	Whitehorse
RUN2	YD50216	134	2011/06/24	Reid Gavin - 100%	Active	2010/06/24	2010/06/02	Whitehorse
RUN2	YD50217	135	2011/06/24	Reid Gavin - 100%	Active	2010/06/24	2010/06/02	Whitehorse
RUN2	YD50218	136	2011/06/24	Reid Gavin - 100%	Active	2010/06/24	2010/06/02	Whitehorse
RUN2	YD50219	137	2011/06/24	Reid Gavin - 100%	Active	2010/06/24	2010/06/02	Whitehorse
RUN2	YD50220	138	2011/06/24	Reid Gavin - 100%	Active	2010/06/24	2010/06/02	Whitehorse
RUN2	YD50221	139	2011/06/24	Reid Gavin - 100%	Active	2010/06/24	2010/06/02	Whitehorse
RUN2	YD50222	140	2011/06/24	Reid Gavin - 100%	Active	2010/06/24	2010/06/02	Whitehorse
RUN2	YD50223	141	2011/06/24	Reid Gavin - 100%	Active	2010/06/24	2010/06/02	Whitehorse

ClaimName	Grantnumber	ClaimNbr	ExpiryDate	ClaimOwner	Status	OperationRecordingDate	StakingDate	District
RUN2	YD50224	142	2011/06/24	Reid Gavin - 100%	Active	2010/06/24	2010/06/02	Whitehorse
RUN2	YD50225	143	2011/06/24	Reid Gavin - 100%	Active	2010/06/24	2010/06/02	Whitehorse
RUN2	YD50226	144	2011/06/24	Reid Gavin - 100%	Active	2010/06/24	2010/06/02	Whitehorse
RUN2	YD50227	145	2011/06/24	Reid Gavin - 100%	Active	2010/06/24	2010/06/02	Whitehorse
RUN2	YD50228	146	2011/06/24	Reid Gavin - 100%	Active	2010/06/24	2010/06/02	Whitehorse
RUN2	YD50229	147	2011/06/24	Reid Gavin - 100%	Active	2010/06/24	2010/06/02	Whitehorse
RUN2	YD50230	148	2011/06/24	Reid Gavin - 100%	Active	2010/06/24	2010/06/02	Whitehorse
RUN2	YD50231	149	2011/06/24	Kaminak Gold Corp. - 100%	Active	2010/06/24	2010/06/02	Whitehorse
RUN2	YD50232	150	2011/06/24	Kaminak Gold Corp. - 100%	Active	2010/06/24	2010/06/02	Whitehorse
RUN2	YD50233	151	2011/06/24	Kaminak Gold Corp. - 100%	Active	2010/06/24	2010/06/02	Whitehorse
RUN2	YD50234	152	2011/06/24	Kaminak Gold Corp. - 100%	Active	2010/06/24	2010/06/02	Whitehorse
RUN2	YD50235	153	2011/06/24	Kaminak Gold Corp. - 100%	Active	2010/06/24	2010/06/02	Whitehorse
RUN2	YD50236	154	2011/06/24	Kaminak Gold Corp. - 100%	Active	2010/06/24	2010/06/02	Whitehorse
RUN2	YD50237	155	2011/06/24	Kaminak Gold Corp. - 100%	Active	2010/06/24	2010/06/02	Whitehorse
RUN2	YD50238	156	2011/06/24	Kaminak Gold Corp. - 100%	Active	2010/06/24	2010/06/02	Whitehorse
RUN2	YD50239	157	2011/06/24	Kaminak Gold Corp. - 100%	Active	2010/06/24	2010/06/02	Whitehorse
RUN2	YD50240	158	2011/06/24	Kaminak Gold Corp. - 100%	Active	2010/06/24	2010/06/02	Whitehorse
RUN2	YD50241	159	2011/06/24	Kaminak Gold Corp. - 100%	Active	2010/06/24	2010/06/02	Whitehorse
RUN2	YD50242	160	2011/06/24	Kaminak Gold Corp. - 100%	Active	2010/06/24	2010/06/02	Whitehorse
RUN2	YD50243	161	2011/06/24	Kaminak Gold Corp. - 100%	Active	2010/06/24	2010/06/02	Whitehorse
RUN2	YD50244	162	2011/06/24	Kaminak Gold Corp. - 100%	Active	2010/06/24	2010/06/02	Whitehorse
RUN2	YD50245	163	2011/06/24	Kaminak Gold Corp. - 100%	Active	2010/06/24	2010/06/02	Whitehorse
RUN2	YD50246	164	2011/06/24	Kaminak Gold Corp. - 100%	Active	2010/06/24	2010/06/02	Whitehorse
RUN2	YD50247	165	2011/06/24	Kaminak Gold Corp. - 100%	Active	2010/06/24	2010/06/02	Whitehorse
RUN2	YD50248	166	2011/06/24	Kaminak Gold Corp. - 100%	Active	2010/06/24	2010/06/02	Whitehorse
RUN2	YD50249	167	2011/06/24	Kaminak Gold Corp. - 100%	Active	2010/06/24	2010/06/02	Whitehorse
RUN2	YD50250	168	2011/06/24	Kaminak Gold Corp. - 100%	Active	2010/06/24	2010/06/02	Whitehorse
RUN2	YD50251	169	2011/06/24	Kaminak Gold Corp. - 100%	Active	2010/06/24	2010/06/02	Whitehorse
RUN2	YD50252	170	2011/06/24	Kaminak Gold Corp. - 100%	Active	2010/06/24	2010/06/02	Whitehorse

ClaimName	Grantnumber	ClaimNbr	ExpiryDate	ClaimOwner	Status	OperationRecordingDate	StakingDate	District
RUN2	YD50253	171	2011/06/24	Kaminak Gold Corp. - 100%	Active	2010/06/24	2010/06/02	Whitehorse
RUN2	YD50254	172	2011/06/24	Kaminak Gold Corp. - 100%	Active	2010/06/24	2010/06/02	Whitehorse
RUN2	YD50255	173	2011/06/24	Kaminak Gold Corp. - 100%	Active	2010/06/24	2010/06/02	Whitehorse
RUN2	YD50256	174	2011/06/24	Kaminak Gold Corp. - 100%	Active	2010/06/24	2010/06/02	Whitehorse
RUN2	YD50257	175	2011/06/24	Kaminak Gold Corp. - 100%	Active	2010/06/24	2010/06/02	Whitehorse
RUN2	YD50258	176	2011/06/24	Kaminak Gold Corp. - 100%	Active	2010/06/24	2010/06/02	Whitehorse
RUN2	YD50259	177	2011/06/24	Kaminak Gold Corp. - 100%	Active	2010/06/24	2010/06/02	Whitehorse
RUN2	YD50260	178	2011/06/24	Kaminak Gold Corp. - 100%	Active	2010/06/24	2010/06/02	Whitehorse
RUN2	YD50261	179	2011/06/24	Kaminak Gold Corp. - 100%	Active	2010/06/24	2010/06/02	Whitehorse
RUN2	YD50262	180	2011/06/24	Kaminak Gold Corp. - 100%	Active	2010/06/24	2010/06/02	Whitehorse
RUN2	YD50263	181	2011/06/24	Kaminak Gold Corp. - 100%	Active	2010/06/24	2010/06/02	Whitehorse
RUN2	YD50264	182	2011/06/24	Kaminak Gold Corp. - 100%	Active	2010/06/24	2010/06/02	Whitehorse
RUN2	YD50265	183	2011/06/24	Kaminak Gold Corp. - 100%	Active	2010/06/24	2010/06/02	Whitehorse
RUN2	YD50266	184	2011/06/24	Kaminak Gold Corp. - 100%	Active	2010/06/24	2010/06/02	Whitehorse
RUN2	YD50267	185	2011/06/24	Kaminak Gold Corp. - 100%	Active	2010/06/24	2010/06/02	Whitehorse
RUN2	YD50268	186	2011/06/24	Kaminak Gold Corp. - 100%	Active	2010/06/24	2010/06/02	Whitehorse
RUN2	YD50269	187	2011/06/24	Kaminak Gold Corp. - 100%	Active	2010/06/24	2010/06/02	Whitehorse
RUN2	YD50270	188	2011/06/24	Kaminak Gold Corp. - 100%	Active	2010/06/24	2010/06/02	Whitehorse
RUN2	YD50271	189	2011/06/24	Kaminak Gold Corp. - 100%	Active	2010/06/24	2010/06/02	Whitehorse
RUN2	YD50272	190	2011/06/24	Kaminak Gold Corp. - 100%	Active	2010/06/24	2010/06/02	Whitehorse
RUN2	YD50273	191	2011/06/24	Kaminak Gold Corp. - 100%	Active	2010/06/24	2010/06/02	Whitehorse
RUN2	YD50274	192	2011/06/24	Kaminak Gold Corp. - 100%	Active	2010/06/24	2010/06/02	Whitehorse
RUN2	YD50275	193	2011/06/24	Kaminak Gold Corp. - 100%	Active	2010/06/24	2010/06/01	Whitehorse
RUN2	YD50276	194	2011/06/24	Kaminak Gold Corp. - 100%	Active	2010/06/24	2010/06/01	Whitehorse
RUN2	YD50277	195	2011/06/24	Kaminak Gold Corp. - 100%	Active	2010/06/24	2010/06/01	Whitehorse
RUN2	YD50278	196	2011/06/24	Kaminak Gold Corp. - 100%	Active	2010/06/24	2010/06/01	Whitehorse
RUN2	YD50279	197	2011/06/24	Kaminak Gold Corp. - 100%	Active	2010/06/24	2010/06/01	Whitehorse
RUN2	YD50280	198	2011/06/24	Kaminak Gold Corp. - 100%	Active	2010/06/24	2010/06/01	Whitehorse
RUN2	YD50281	199	2011/06/24	Kaminak Gold Corp. - 100%	Active	2010/06/24	2010/06/01	Whitehorse

ClaimName	Grantnumber	ClaimNbr	ExpiryDate	ClaimOwner	Status	OperationRecordingDate	StakingDate	District
RUN2	YD50282	200	2011/06/24	Kaminak Gold Corp. - 100%	Active	2010/06/24	2010/06/01	Whitehorse
RUN2	YD50283	201	2011/06/24	Kaminak Gold Corp. - 100%	Active	2010/06/24	2010/06/01	Whitehorse
RUN2	YD50284	202	2011/06/24	Kaminak Gold Corp. - 100%	Active	2010/06/24	2010/06/01	Whitehorse
RUN2	YD50285	203	2011/06/24	Kaminak Gold Corp. - 100%	Active	2010/06/24	2010/06/01	Whitehorse
RUN2	YD50286	204	2011/06/24	Kaminak Gold Corp. - 100%	Active	2010/06/24	2010/06/01	Whitehorse

**14.0 APPENDIX 2 – Sample locations and analytical results for select elements. All results in ppm except Au (ppb).**

SampleID	UTM Easting	UTM Northing	Mo	Cu	Pb	Zn	Ag	As	Au	Sb	Bi	Ba	W	Hg
RUN108497	569663	6945287	0.4	29.8	5.6	38	0.05	5.1	2.9	0.3	0.1	158	0.05	0.02
RUN108499	569763	6945271	0.6	31.1	6.5	43	0.05	5.7	2.4	0.2	0.1	172	0.1	0.02
RUN108500	569809	6945252	0.7	26.6	6.2	39	0.05	6.3	2.3	0.3	0.1	143	0.05	0.02
RUN113687	569907	6945228	0.5	28.9	6.4	37	0.05	5.2	3.1	0.3	0.1	153	0.1	0.03
RUN113688	569954	6945212	0.6	27.5	6.5	38	0.1	6.4	5.9	0.3	0.1	163	0.1	0.02
RUN113689	570004	6945206	0.4	36.5	5	33	0.05	4.4	2.6	0.2	0.1	146	0.05	0.02
RUN113690	570052	6945190	0.7	27.9	6.7	38	0.05	6.7	2.5	0.3	0.1	147	0.1	0.02
RUN117658	569517	6945295	0.8	27.7	6.1	41	0.05	6.6	2.5	0.2	0.1	139	0.1	0.02
RUN117659	569567	6945295	0.6	30.5	5.8	40	0.05	5.3	5.2	0.2	0.2	150	0.05	0.02
RUN118965	569817	6950147	0.6	41	22.1	56	0.3	5.7	3.6	0.3	0.1	242	0.1	0.02
RUN118966	569780	6950114	0.6	24	10.9	54	0.1	5.9	2.2	0.3	0.2	217	0.2	0.02
RUN118968	569703	6950046	0.6	26.1	7.5	52	0.05	6	1.9	0.3	0.1	216	0.1	0.02
RUN133034	569641	6949967	0.6	24.4	7.5	56	0.05	5.6	2.9	0.2	0.1	286	0.1	0.005
RUN133034	569641	6949967	0.5	23.6	7.7	56	0.05	5.4	1.7	0.3	0.1	286	0.1	0.01
RUN133035	569608	6949926	0.8	20.6	7.3	54	0.05	5.5	2.8	0.3	0.1	277	0.1	0.01
RUN133052	570531	6945048	0.6	33.1	6	46	0.05	6.9	2.5	0.3	0.1	160	0.1	0.04
RUN133053	570574	6945024	0.7	32.5	7.3	45	0.05	7.3	4.3	0.4	0.1	170	0.1	0.03
RUN133054	570620	6945004	0.5	31.9	5.6	44	0.05	6.1	5.9	0.3	0.1	163	0.05	0.02
RUN133055	570665	6944979	0.5	30.9	6.2	39	0.05	6	2.7	0.3	0.1	183	0.05	0.03
RUN133057	570759	6944944	0.6	44.9	6.6	43	0.05	6	4.3	0.3	0.1	161	0.05	0.03
RUN133058	570805	6944928	0.7	36.5	7	40	0.05	7.6	2.8	0.3	0.2	165	0.1	0.03
RUN133058	570805	6944928	0.7	35.9	7	39	0.05	7.6	3.4	0.3	0.1	157	0.1	0.03
RUN133059	570853	6944911	0.5	62.6	6.3	36	0.05	6.6	2.1	0.3	0.1	163	0.05	0.02
RUN133059	570853	6944911	0.5	59.3	5.8	38	0.05	6.8	5.5	0.3	0.1	170	0.05	0.02
RUN133060	570901	6944901	0.5	40.3	4.6	44	0.05	10.8	6.2	0.5	0.1	158	0.05	0.03
RUN133061	570951	6944891	0.4	38.7	4.9	47	0.05	5.5	2	0.2	0.1	182	0.05	0.02
RUN133062	571001	6944896	0.5	45.3	5.3	40	0.05	6	2.2	0.3	0.1	155	0.1	0.03

SampleID	UTM Easting	UTM Northing	Mo	Cu	Pb	Zn	Ag	As	Au	Sb	Bi	Ba	W	Hg
RUN133063	571052	6944892	0.5	37	5.7	42	0.05	5.6	2.9	0.3	0.1	160	0.05	0.02
RUN138051	569504	6948929	0.5	20	8.7	54	0.05	7.1	2.7	0.3	0.1	234	0.1	0.02
RUN138052	569553	6948906	0.7	17.8	8.6	51	0.05	7.7	0.8	0.3	0.1	204	0.1	0.02
RUN138054	569650	6948878	0.4	19.8	7.2	54	0.05	5.3	2.8	0.3	0.1	339	0.05	0.02
RUN138058	569843	6948820	0.7	15.1	8.2	57	0.05	7.1	2	0.3	0.1	255	0.1	0.02
RUN138059	569889	6948797	0.8	15.8	11.4	52	0.05	6.8	7.6	0.3	0.2	175	0.1	0.03
RUN138300	569417	6945287	0.6	31.8	5.1	40	0.05	5.8	1.7	0.2	0.1	133	0.05	0.01
RUN138301	569368	6945276	0.5	35.5	5.9	40	0.05	5.3	3.2	0.3	0.1	163	0.05	0.03
RUN138302	569318	6945278	0.5	37.6	5.5	40	0.05	5.3	2.7	0.2	0.1	139	0.05	0.02
RUN138303	569269	6945275	0.5	39.2	6.5	53	0.05	8	3.6	0.3	0.1	186	0.05	0.04
RUN138304	569219	6945272	0.5	57	5.1	35	0.05	5.4	4.2	0.3	0.05	147	0.1	0.02
RUN138308	569020	6945249	0.6	40.7	5.5	45	0.05	5.9	4.6	0.2	0.1	164	0.1	0.02
RUN138318	568667	6945366	0.3	30.2	5.4	47	0.05	5.3	8.2	0.3	0.1	126	0.1	0.04
RUN138319	568682	6945415	0.6	30.2	6.1	50	0.05	6.5	4.5	0.3	0.1	157	0.1	0.03
RUN138321	568707	6945513	0.3	31.2	4.4	40	0.05	5.2	10.8	0.2	0.05	155	0.1	0.03
RUN138322	568710	6945563	0.2	42.9	4.8	40	0.05	5.4	7.7	0.3	0.1	137	0.05	0.03
RUN138324	568721	6945662	0.4	31	4.9	42	0.05	3.7	7.7	0.2	0.1	145	0.2	0.03
RUN138325	568718	6945713	0.7	25.7	5.2	56	0.05	5.4	1.9	0.2	0.1	154	0.05	0.03
RUN138326	568719	6945763	0.9	26.9	5	49	0.05	5.3	2.4	0.3	0.1	139	0.05	0.04
RUN138327	568725	6945814	0.3	29	6.8	51	0.05	3.7	2.5	0.3	0.1	162	0.1	0.05
RUN138328	568727	6945865	0.7	26.6	5.2	57	0.05	4.2	1.4	0.3	0.1	148	0.2	0.04
RUN138329	571373	6949283	0.5	27.1	7.3	68	0.05	6.6	6.5	0.4	0.1	300	0.1	0.03
RUN138331	571447	6949217	0.3	24	7.4	48	0.05	4.7	1.6	0.4	0.1	196	0.05	0.03
RUN138335	571548	6949109	0.4	21.1	5.7	45	0.05	4.9	1.6	0.3	0.05	224	0.1	0.03
RUN138337	571627	6949050	0.3	28	7.3	57	0.05	5.7	3.5	0.4	0.1	243	0.05	0.04
RUN138350	572116	6948626	1	36.2	6.4	55	0.05	7.3	5.5	0.4	0.1	176	0.1	0.03
RUN138352	572193	6948561	0.5	31.7	6.7	46	0.05	6.4	1.7	0.3	0.1	172	0.05	0.03
RUN138353	572235	6948535	0.6	37.5	8.1	54	0.05	8	4.7	0.5	0.1	183	0.2	0.03
RUN138354	572277	6948507	0.6	35	6.4	55	0.05	8.4	5	0.4	0.1	165	0.1	0.03
RUN138356	572359	6948450	0.5	32.3	7.6	60	0.05	5.6	2.5	0.4	0.1	300	0.1	0.02
RUN138357	572403	6948427	0.7	17.4	8.6	62	0.05	5.1	4.6	0.4	0.1	311	0.1	0.005
RUN138358	572441	6948394	0.5	20.2	7.3	67	0.05	5.2	1.2	0.3	0.1	408	0.05	0.02
RUN138359	572480	6948364	0.4	7.5	10	80	0.05	3.3	0.25	0.5	0.05	667	0.05	0.005
RUN138360	572522	6948335	0.6	27.2	6.6	80	0.05	5.8	3	0.4	0.05	535	0.05	0.02



SampleID	UTM Easting	UTM Northing	Mo	Cu	Pb	Zn	Ag	As	Au	Sb	Bi	Ba	W	Hg
RUN138361	572562	6948304	0.6	21.2	6.6	63	0.05	4.8	1.5	0.3	0.05	734	0.05	0.005
RUN138362	572604	6948277	0.6	17.8	6.7	80	0.05	8.4	0.25	0.3	0.05	648	0.1	0.01
RUN138430	569237	6948074	0.5	19.7	6.8	43	0.05	6.9	2.4	0.3	0.1	226	0.1	0.03
RUN138431	569225	6948024	0.5	17.1	10.6	49	0.05	5.2	1.5	0.3	0.2	250	0.05	0.02
RUN138432	569204	6947977	0.5	20.4	9.4	53	0.05	5.6	4.6	0.3	0.2	278	0.05	0.01
RUN138433	569196	6947928	0.6	17.1	8.1	46	0.05	7	2.8	0.3	0.1	183	0.05	0.02
RUN138434	569198	6947879	0.6	23.3	9	60	0.05	6.5	2.6	0.3	0.2	299	0.2	0.02
RUN138435	569198	6947879	0.6	22.9	8.5	55	0.05	5.4	4.6	0.3	0.1	284	0.1	0.02
RUN138436	569176	6947834	1.1	15.1	8.7	51	0.05	6.2	2.6	0.3	0.1	164	0.05	0.01
RUN138437	569161	6947786	1.4	19.2	9.6	54	0.1	7.1	0.9	0.3	0.2	258	0.1	0.03
RUN138438	569153	6947738	1.2	16.1	9.1	52	0.05	7.2	8.1	0.5	0.2	257	0.1	0.01
RUN138439	569113	6947707	0.5	24.4	7	70	0.05	6.6	1.4	0.3	0.2	438	0.1	0.005
RUN138440	569113	6947707	0.6	23.7	6.6	67	0.05	6.8	1.6	0.3	0.1	429	0.1	0.02
RUN138441	569080	6947669	0.6	14.4	7.1	66	0.05	5	1.9	0.3	0.1	400	0.1	0.005
RUN138441	569080	6947669	0.7	15.1	6.7	65	0.05	4.9	1.3	0.3	0.1	383	0.05	0.005
RUN138442	569043	6947636	0.7	16.6	7.2	50	0.05	5.7	2.2	0.3	0.1	279	0.05	0.02
RUN138443	569018	6947591	1	14.3	8.9	56	0.05	7.4	3.8	0.3	0.1	218	0.1	0.01
RUN138444	568999	6947543	0.9	13.5	9.6	47	0.05	7.7	4.1	0.5	0.2	187	0.1	0.02
RUN138445	568974	6947500	0.5	18.3	7.8	56	0.05	6.5	2.4	0.3	0.1	288	0.1	0.01
RUN138446	568946	6947458	0.5	14.9	6.2	65	0.05	5.2	1.5	0.2	0.1	323	0.05	0.01
RUN138485	569939	6948788	0.8	15.1	12.1	60	0.05	5.6	1.1	0.3	0.2	282	0.05	0.02
RUN138486	569986	6948769	0.9	18.2	9.7	59	0.1	6.8	3.5	0.3	0.2	264	0.2	0.02
RUN138487	570034	6948753	0.8	15.1	12.5	61	0.05	6.4	1.5	0.3	0.2	236	0.1	0.01
RUN138488	570079	6948732	0.2	20.5	7.2	55	0.05	6.1	6.3	0.3	0.1	276	0.05	0.01
RUN138489	570128	6948717	0.6	18.6	9.1	48	0.05	6.5	7.3	0.3	0.1	284	0.1	0.01
RUN138490	570175	6948697	0.5	17.4	11	50	0.05	5.6	1.9	0.3	0.2	236	0.1	0.02
RUN138491	570223	6948681	0.5	16.2	8.9	55	0.05	5.7	1.6	0.3	0.1	255	0.1	0.02
RUN138492	570260	6948646	0.5	23.8	8.5	62	0.05	5.6	6.5	0.4	0.1	221	0.05	0.04
RUN138493	570302	6948616	0.4	22.8	7.3	50	0.05	6.2	3.6	0.4	0.1	218	0.1	0.02
RUN138494	570325	6948571	0.7	14	7.9	47	0.05	7.1	2.2	0.3	0.1	141	0.1	0.01
RUN138494	570325	6948571	0.8	12.3	7.9	44	0.05	6.9	2.3	0.4	0.1	150	0.1	0.02
RUN138495	570369	6948545	0.3	22.1	7.8	61	0.05	7.3	2.3	0.4	0.1	278	0.05	0.03
RUN138496	570417	6948525	0.4	22.7	6.3	55	0.05	5.7	4.9	0.3	0.1	237	0.05	0.04
RUN138497	570465	6948507	0.4	22	6.7	53	0.05	5.3	2.1	0.3	0.1	248	0.1	0.02

SampleID	UTM Easting	UTM Northing	Mo	Cu	Pb	Zn	Ag	As	Au	Sb	Bi	Ba	W	Hg
RUN138498	570497	6948468	1	33	7.3	57	0.05	7.4	5.4	0.4	0.1	243	0.1	0.03
RUN138499	570536	6948433	0.6	31.1	7	59	0.05	7.2	5	0.4	0.1	244	0.1	0.03
RUN138499	570536	6948433	0.4	30.7	6.9	62	0.05	7.2	3.6	0.4	0.1	256	0.1	0.03
RUN138500	570575	6948400	0.5	27.3	8.2	68	0.05	6	2.2	0.4	0.1	257	0.05	0.03
RUN138991	573458	6949206	0.5	14.5	9.7	68	0.05	5.5	2.7	0.2	0.1	325	0.05	0.005
RUN138992	573503	6949182	1	24.4	10.1	81	0.05	8.1	1.3	0.4	0.1	400	0.2	0.005
RUN138993	573551	6949166	1	15.1	10.1	67	0.05	6.1	0.25	0.4	0.1	246	0.05	0.01
RUN138994	573589	6949132	0.9	25.5	10.6	63	0.05	7.5	2.2	0.4	0.2	216	0.05	0.02
RUN138994	573589	6949132	1.1	25	9.9	64	0.05	7.6	3.2	0.4	0.2	213	0.1	0.02
RUN138995	573611	6949086	0.4	12	15.8	62	0.05	8.1	0.25	0.3	0.2	188	0.05	0.005
RUN139024	570099	6945172	0.4	31.9	6.8	37	0.05	5.5	4.3	0.2	0.1	144	0.05	0.03
RUN139025	570149	6945158	0.4	35.7	6.8	40	0.05	6.2	3	0.4	0.1	169	0.05	0.02
RUN139026	570196	6945141	0.6	31.2	7	41	0.05	6.5	2.6	0.3	0.1	155	0.05	0.03
RUN139027	570243	6945126	0.4	54.4	5.5	40	0.05	5.4	3.5	0.2	0.1	147	0.05	0.02
RUN139028	570291	6945109	0.6	30.8	6.1	38	0.05	6.8	2.5	0.2	0.1	164	0.05	0.03
RUN139030	570386	6945082	0.4	38.1	5.3	45	0.05	5.9	2.5	0.2	0.1	148	0.05	0.03
RUN139031	570436	6945080	0.4	46.4	6.7	43	0.05	5.8	3.3	0.3	0.1	162	0.05	0.02
RUN139051	577859	6945687	0.8	24.6	6.9	52	0.05	7.3	2	0.4	0.1	213	0.05	0.02
RUN139054	577909	6945830	1.1	25.7	8	63	0.05	8.6	1.2	0.5	0.2	138	0.05	0.05
RUN139055	577924	6945879	1.2	20	8	53	0.05	6.8	1.2	0.5	0.2	136	0.1	0.02
RUN139056	577942	6945926	0.7	22.3	5.8	44	0.05	5.6	1.9	0.3	0.1	139	0.05	0.04
RUN139061	578026	6946165	0.8	20.4	6.5	50	0.05	7.9	1.8	0.5	0.2	146	0.05	0.04
RUN139063	578055	6946260	1.1	16.6	7.6	49	0.05	3.9	2.1	0.3	0.1	117	0.05	0.05
RUN139064	578071	6946308	0.4	17.5	5.2	44	0.05	3.1	6.3	0.2	0.1	101	0.05	0.02
RUN139065	578085	6946357	0.4	17.2	3.8	31	0.05	2.1	1.4	0.2	0.05	72	0.05	0.04
RUN139066	578084	6946408	0.2	26.5	4.5	47	0.05	2.4	3.7	0.3	0.05	113	0.05	0.06
RUN139067	578075	6946459	0.2	26.4	5.5	56	0.05	1.9	4.2	0.3	0.1	126	0.05	0.04
RUN139068	578077	6946509	0.3	23.1	6.6	51	0.05	4.2	1.4	0.3	0.1	140	0.1	0.03
RUN139069	578076	6946560	0.5	30.9	9.3	71	0.05	11.9	7.7	0.4	0.6	193	0.3	0.03
RUN139069	578076	6946560	0.5	33.3	8.5	75	0.05	12.1	8	0.4	0.6	189	0.3	0.04
RUN139070	578092	6946609	0.8	31.9	11.8	62	0.05	9	4.7	0.4	0.3	222	0.1	0.03
RUN139070	578092	6946609	0.8	31.7	11.8	59	0.05	9.2	4.9	0.3	0.3	220	0.1	0.03
RUN139071	578107	6946659	0.6	19.5	8.7	64	0.05	6.8	1.2	0.3	0.2	213	0.2	0.02
RUN139072	578113	6946709	0.4	28.1	8.1	54	0.1	9.1	1.9	0.4	0.2	235	0.1	0.02

SampleID	UTM Easting	UTM Northing	Mo	Cu	Pb	Zn	Ag	As	Au	Sb	Bi	Ba	W	Hg
RUN139073	578113	6946709	0.7	26.1	7.6	51	0.05	7.9	3	0.4	0.2	231	0.05	0.02
RUN139074	578128	6946757	0.7	29.3	7.9	52	0.05	8.2	3.1	0.4	0.2	211	0.2	0.03
RUN139075	578144	6946805	0.9	24	7.9	54	0.05	5.9	3.4	0.3	0.1	184	0.05	0.02
RUN139076	578147	6946855	0.9	22.4	9.2	57	0.05	6.8	4.7	0.4	0.2	237	0.05	0.02
RUN139078	578173	6946955	1.1	23.7	7.5	52	0.05	8.2	2.8	0.4	0.2	216	0.05	0.02
RUN139079	578191	6947002	0.9	21.5	5.8	30	0.2	4.8	2.1	0.3	0.2	186	0.3	0.04
RUN139080	578205	6947050	0.9	16.9	6.4	51	0.05	5.3	2.2	0.2	0.1	166	0.2	0.03
RUN139081	578208	6947100	0.6	28.9	6.8	57	0.05	6.6	1.6	0.3	0.1	288	0.2	0.03
RUN139488	570617	6948373	1	36.9	7.3	71	0.05	8.5	4	0.5	0.1	218	0.2	0.02
RUN139489	570660	6948345	0.5	26.9	6.9	72	0.05	5.7	3.6	0.4	0.1	211	0.1	0.02
RUN139490	570698	6948314	0.5	36.5	6.2	58	0.05	7.1	2.1	0.4	0.1	188	0.1	0.02
RUN139491	570730	6948273	0.4	28.3	5.9	102	0.05	6.8	0.7	0.5	0.05	186	0.05	0.02
RUN139492	570767	6948237	1	38	7.1	65	0.05	8	3.8	0.4	0.1	241	0.2	0.03
RUN139493	570807	6948206	0.6	29.2	9.3	49	0.05	6.7	3.3	0.4	0.1	179	0.1	0.03
RUN139584	577998	6947521	0.6	27.9	6.7	52	0.05	7	2.2	0.4	0.1	207	0.1	0.04
RUN139585	577947	6947516	0.7	28.1	7.4	55	0.05	5.3	3.5	0.4	0.1	221	0.2	0.04
RUN139586	577895	6947513	0.5	21.9	8.8	61	0.05	5.1	3.8	0.4	0.2	207	0.3	0.03
RUN139589	577745	6947498	1.1	29.6	7.7	56	0.1	5.1	1.5	0.3	0.1	252	0.1	0.03
RUN139590	577692	6947498	1.4	30.9	8.2	54	0.05	5.2	3.6	0.4	0.2	258	0.2	0.05
RUN139591	577647	6947489	1.1	26.2	7.2	56	0.05	5.8	2.9	0.3	0.1	247	0.1	0.03
RUN139630	574240	6948401	0.4	21	7.6	68	0.05	5.8	3.4	0.3	0.2	406	0.1	0.02
RUN139631	574271	6948354	1.2	16.2	8.5	64	0.05	6.8	1.3	0.5	0.1	284	0.05	0.01
RUN139634	574358	6948228	0.9	19.7	8.7	69	0.05	7.1	3.6	0.3	0.1	326	0.05	0.01
RUN139727	578964	6950155	0.9	30.5	6	64	0.05	5.7	3.8	0.3	0.1	331	0.3	0.03
RUN139728	578961	6950103	0.8	30.3	6.1	65	0.1	5.8	4.5	0.3	0.1	338	0.1	0.04
RUN139729	578952	6950053	0.8	29.2	6	62	0.1	5.5	2.9	0.3	0.1	341	0.2	0.04
RUN139730	578958	6950002	1.3	31.6	6.6	64	0.2	6.3	3.6	0.3	0.2	457	0.1	0.05
RUN139731	578957	6949952	1.4	20.1	8.6	64	0.05	5.9	3.3	0.2	0.5	251	0.3	0.01
RUN139732	578956	6949900	1.2	23.9	9.5	66	0.05	7.6	3.1	0.3	0.3	339	0.2	0.02
RUN139733	578958	6949848	1.9	35.5	8.7	76	0.2	8.6	3.7	0.4	0.2	437	0.2	0.04
RUN139734	578962	6949797	1	23.2	7.6	56	0.1	6.3	1.5	0.3	0.2	300	0.2	0.03
RUN139736	578950	6949695	0.6	34.9	5.7	70	0.1	5.5	4.7	0.3	0.2	411	0.2	0.03
RUN139737	578953	6949643	0.6	30.7	6.9	63	0.1	5.1	2	0.4	0.2	391	0.1	0.04
RUN139738	578946	6949592	0.5	32	5.7	62	0.1	5.9	3.5	0.3	0.1	386	0.2	0.03

SampleID	UTM Easting	UTM Northing	Mo	Cu	Pb	Zn	Ag	As	Au	Sb	Bi	Ba	W	Hg
RUN139740	578945	6949490	1.1	29.1	8.7	63	0.1	6.8	7.4	0.3	0.2	351	0.2	0.02
RUN139743	578951	6949387	1.3	19.6	44.3	70	2.3	6.4	5.3	0.6	2.4	349	0.05	0.04
RUN139747	578928	6949184	0.7	8.2	20.9	109	0.05	3.8	0.25	0.7	0.05	160	0.05	0.01
RUN139748	578925	6949134	0.7	11.3	23	65	0.05	2.5	0.9	0.3	0.2	156	0.05	0.01
RUN139749	578922	6949083	0.8	12.6	33.1	70	0.2	8.3	1	1.1	0.2	354	0.1	0.17
RUN139750	578889	6948931	1.2	24.8	15.3	73	0.1	4.7	2.6	0.3	0.2	269	0.1	0.02
RUN139833	569453	6948787	0.4	16.3	7.4	57	0.05	5.8	3.7	0.3	0.05	339	0.1	0.01
RUN139834	569441	6948740	0.6	18.5	7.3	51	0.05	4.8	2.5	0.2	0.1	249	0.1	0.02
RUN139835	569431	6948690	0.5	18.1	8.8	58	0.05	5.7	0.6	0.3	0.1	334	0.1	0.005
RUN139835	569431	6948690	0.6	18.1	8.7	55	0.05	5.5	2.3	0.3	0.1	333	0.05	0.005
RUN139836	569410	6948644	1	15.1	8.8	56	0.05	10.3	1.3	0.3	0.2	179	0.1	0.02
RUN139837	569408	6948594	0.6	23.7	23.9	55	0.05	8.3	3.2	0.3	0.2	170	0.05	0.02
RUN139838	569389	6948547	0.4	22.1	7.8	48	0.05	5.4	3.2	0.3	0.1	273	0.05	0.03
RUN139839	569384	6948497	0.8	28.9	7.8	60	0.05	10.1	1.9	0.4	0.2	246	0.05	0.04
RUN139840	569362	6948451	0.3	26.2	7	52	0.05	5.4	7.5	0.3	0.1	333	0.1	0.03
RUN139842	569355	6948352	0.7	18.6	6.7	34	0.1	3.8	1.7	0.2	0.1	213	0.1	0.03
RUN139843	569338	6948305	0.4	20.3	6.3	43	0.05	4.2	4.6	0.2	0.1	218	0.1	0.01
RUN139844	569324	6948256	0.6	26.7	8.1	56	0.05	5.9	2.4	0.3	0.1	365	0.1	0.02
RUN139845	569300	6948211	0.8	22.6	8.8	37	0.2	4.9	2.8	0.2	0.2	181	0.1	0.02
RUN139846	569283	6948163	0.5	20.1	7.2	49	0.05	5.2	2.3	0.2	0.1	244	0.1	0.01
RUN139847	569259	6948119	0.5	17.7	7.6	44	0.05	5.1	2.6	0.2	0.1	222	0.1	0.01
RUN143223	569449	6949016	0.5	24	7.1	57	0.05	6.8	2.5	0.3	0.1	212	0.1	0.01
RUN143224	569459	6948965	0.6	20.7	7	56	0.05	7.6	4.1	0.3	0.1	295	0.1	0.02
RUN143225	569475	6948917	0.8	24.9	7.9	61	0.05	7	1.5	0.3	0.1	333	0.1	0.02
RUN144519	570927	6948117	0.4	27.1	7.2	57	0.05	5.9	2	0.3	0.1	187	0.05	0.03
RUN144520	570968	6948087	0.5	17.7	8.2	55	0.05	5.6	3	0.4	0.1	201	0.05	0.01
RUN144521	571014	6948068	0.5	24.9	18.4	63	0.05	5.9	5.1	0.4	0.2	133	0.05	0.04
RUN144522	571061	6948049	0.5	17.8	14.1	51	0.05	8.7	3.4	0.4	0.05	88	0.05	0.02
RUN144523	571112	6948045	0.4	22.4	7.6	53	0.05	6.9	1.7	0.4	0.1	172	0.1	0.03
RUN144524	571152	6948015	0.4	18	7.3	50	0.05	5	3.1	0.3	0.1	170	0.1	0.02
RUN144525	571187	6947980	0.4	30	7.3	53	0.05	5.1	2	0.4	0.1	192	0.05	0.03
RUN144526	571221	6947943	0.6	24	7.4	47	0.05	8.7	2.9	0.4	0.1	210	0.05	0.03
RUN144526	571221	6947943	0.6	23.9	7.2	45	0.05	8.5	3.6	0.4	0.1	209	0.1	0.02
RUN144527	571261	6947914	0.6	21.2	8.1	56	0.05	6.9	2	0.3	0.1	228	0.2	0.02

SampleID	UTM Easting	UTM Northing	Mo	Cu	Pb	Zn	Ag	As	Au	Sb	Bi	Ba	W	Hg
RUN144530	571408	6947876	0.2	16.2	39.3	111	0.05	4.4	6.6	0.4	0.1	245	0.05	0.01
RUN144532	571487	6947812	0.9	17.2	8.5	58	0.05	6.8	0.25	0.5	0.1	209	0.05	0.01
RUN144533	571533	6947791	0.4	24.1	6.3	61	0.05	7.7	2.6	0.4	0.1	210	0.1	0.005
RUN144534	571580	6947776	0.3	42.1	6.8	51	0.1	8.5	6.9	0.4	0.1	202	0.1	0.03
RUN144570	571808	6947688	0.5	25.8	6.6	50	0.05	5.6	2.3	0.3	0.1	200	0.05	0.02
RUN144571	571858	6947694	0.6	28.4	7.8	58	0.05	6.1	4.8	0.4	0.2	193	0.05	0.02
RUN144579	572189	6947618	0.05	14.2	9.8	82	0.05	4.9	0.7	0.4	0.1	254	0.05	0.01
RUN144581	572276	6947590	0.7	24.2	8.4	52	0.05	6.9	4.3	0.4	0.1	273	0.1	0.005
RUN144583	572370	6947623	0.6	34.5	7.1	57	0.05	6.8	3	0.5	0.2	180	0.1	0.04
RUN144584	572385	6947639	0.6	32.2	5.9	50	0.05	6.4	10.7	0.4	0.1	164	0.1	0.03
RUN144688	578874	6948880	1.4	20	8.9	50	0.1	7.1	2.9	0.5	0.2	276	0.05	0.02
RUN144692	578834	6948681	2	21.4	12.8	50	0.1	7.1	2.8	0.4	0.3	196	0.1	0.03
RUN144693	578824	6948630	1.8	29.2	15.2	75	0.05	2.9	0.7	0.3	0.2	333	0.05	0.01
RUN144693	578824	6948630	1.7	28.9	15.3	78	0.05	2.9	0.25	0.3	0.3	335	0.05	0.01
RUN144795	575407	6950099	0.4	11.8	18.5	97	0.05	3.2	0.25	1.3	0.1	145	0.1	0.005
RUN144800	575578	6949939	0.5	12	9.4	69	0.05	4.5	1	0.4	0.1	285	0.05	0.005
RUN144801	575605	6949898	1.8	18.1	9.6	77	0.05	10.9	0.5	0.5	0.2	327	0.3	0.005
RUN144802	575615	6949848	0.6	14.9	5.2	87	0.05	6.1	0.25	0.3	0.05	374	0.05	0.01
RUN144806	575596	6949651	0.7	22.7	14.4	72	0.2	7.7	0.9	0.5	0.2	358	0.1	0.02
RUN144806	575596	6949651	0.7	22.6	14.5	74	0.2	7.9	0.6	0.5	0.2	369	0.2	0.02
RUN145001	569347	6949402	0.7	32.7	6.3	51	0.05	5.2	5.9	0.3	0.1	273	0.1	0.03
RUN145002	569367	6949354	1.3	23	8.5	60	0.05	8	4.2	0.3	0.2	212	0.05	0.03
RUN145003	569400	6949316	0.6	21	6.7	53	0.05	7.4	0.9	0.3	0.05	275	0.2	0.005
RUN145004	569400	6949316	0.5	19.3	5.8	55	0.05	6.7	1.7	0.3	0.1	271	0.1	0.01
RUN145005	569418	6949265	0.5	21.6	5.8	57	0.05	7.2	3.1	0.3	0.1	245	0.1	0.02
RUN145006	569418	6949218	0.5	19.1	6.5	56	0.05	5.2	1.8	0.2	0.1	293	0.05	0.02
RUN145007	569423	6949168	0.8	19.4	8.4	52	0.05	8.4	2.8	0.4	0.1	216	0.05	0.01
RUN145011	569354	6949620	0.5	21.8	6	47	0.05	5.3	3.1	0.2	0.05	233	0.05	0.02
RUN145012	569312	6949586	0.2	10.2	8.2	43	0.05	2.8	0.25	0.2	0.05	913	0.05	0.01
RUN145014	569298	6949491	1	25.6	8.5	57	0.05	8.3	2.4	0.4	0.1	253	0.05	0.02
RUN145016	569321	6949447	0.4	23	6.9	51	0.05	6.1	1.7	0.2	0.1	293	0.1	0.03
RUN145126	577372	6945902	0.3	21.8	4.7	49	0.05	5.5	4.8	0.2	0.05	116	0.1	0.03
RUN145128	577272	6945919	0.3	20.2	5	48	0.05	2.6	6	0.2	0.05	105	0.05	0.03
RUN145129	577235	6945954	0.3	39.5	5.7	49	0.1	3.8	0.25	0.4	0.05	170	0.05	0.04

SampleID	UTM Easting	UTM Northing	Mo	Cu	Pb	Zn	Ag	As	Au	Sb	Bi	Ba	W	Hg
RUN145129	577235	6945954	0.3	40.2	5.8	48	0.1	3.9	1.2	0.3	0.1	176	0.05	0.04
RUN145131	577136	6945979	0.9	15.3	6.8	46	0.05	5.8	0.25	0.4	0.05	92	0.05	0.02
RUN145132	577087	6945991	0.6	17.8	5.3	42	0.05	4.6	7.7	0.3	0.1	121	0.05	0.02
RUN145133	577042	6946015	0.5	19.2	5.1	47	0.05	4	3.6	0.3	0.1	129	0.05	0.03
RUN145134	577008	6946054	0.4	17.2	6.5	59	0.05	3.9	4.6	0.2	0.1	173	0.1	0.02
RUN145135	576962	6946078	0.9	11.7	7.6	40	0.05	3.3	0.25	0.3	0.2	108	0.05	0.01
RUN145136	576918	6946106	0.8	20.1	5.3	49	0.05	5.1	2	0.3	0.1	111	0.3	0.02
RUN145137	576871	6946124	0.6	21.8	5.4	44	0.05	5	2.3	0.3	0.1	135	0.2	0.03
RUN145141	576710	6946243	0.3	19.7	4.3	45	0.05	3.1	4.9	0.2	0.1	99	0.1	0.02
RUN145142	576676	6946281	0.3	26	5	49	0.05	3.5	2.1	0.2	0.1	126	0.1	0.04
RUN145144	576593	6946336	0.2	28.6	4.5	57	0.05	2.9	4.5	0.3	0.1	140	0.2	0.03
RUN145144	576593	6946336	0.1	27	4.5	59	0.05	3	5.2	0.3	0.1	136	0.2	0.03
RUN145145	576546	6946356	0.2	38	7.3	56	0.1	5.4	7.3	0.5	0.2	112	0.1	0.03
RUN145146	576500	6946376	0.1	27.7	4.5	47	0.05	3.8	3.9	0.4	0.2	97	0.2	0.04
RUN145162	572633	6950011	0.3	11.9	7.3	67	0.05	3.4	3	0.3	0.1	378	0.05	0.01
RUN145169	572933	6949866	0.8	19.3	7.8	48	0.05	7.5	1.8	0.4	0.1	210	0.1	0.02
RUN145170	572967	6949831	0.05	8.5	12.9	120	0.05	3.4	0.25	0.2	0.05	339	0.2	0.005
RUN145180	573298	6949463	0.5	15.7	10	80	0.05	7.8	0.7	0.3	0.1	408	0.2	0.005
RUN145182	573355	6949381	0.4	12.5	9.7	69	0.05	4.6	0.6	0.3	0.05	447	0.1	0.005
RUN145183	573373	6949332	0.3	11.1	8.8	63	0.05	3	0.7	0.2	0.1	331	0.05	0.005
RUN145183	573373	6949332	0.4	11.2	8.7	65	0.05	3	0.25	0.2	0.1	325	0.05	0.01
RUN145184	573399	6949289	0.4	27.9	7.2	58	0.05	5.8	1.5	0.3	0.1	287	0.05	0.03
RUN145185	573425	6949246	0.5	28.6	9.9	65	0.05	5.4	2	0.4	0.1	272	0.2	0.02
RUN145265	578778	6948525	0.7	30.3	7.6	54	0.05	6.8	3.1	0.3	0.1	322	0.1	0.03
RUN145268	578737	6948429	0.8	30.5	8.6	55	0.05	7.1	2.3	0.3	0.2	268	0.2	0.03
RUN145275	578620	6948086	1.1	20.7	11	68	0.05	8.3	1.6	0.4	0.2	360	0.1	0.01
RUN145279	578505	6947911	0.8	23.1	7.4	54	0.05	6.9	3.5	0.3	0.1	349	0.05	0.02
RUN145284	578370	6947688	0.5	19.9	6.4	68	0.05	7	4.4	0.3	0.1	275	0.3	0.03
RUN145285	578343	6947645	0.7	17.8	7.4	75	0.1	5.8	5.6	0.2	0.1	213	0.2	0.03
RUN145286	578312	6947604	0.6	16.8	8.2	68	0.05	5.1	2.5	0.2	0.1	184	0.2	0.03
RUN145287	578277	6947565	0.6	15.8	6.4	63	0.05	5.8	6.8	0.3	0.1	172	0.2	0.03
RUN145290	578050	6947520	0.5	26.1	5.9	58	0.05	8.6	3.3	0.4	0.1	208	0.2	0.02
RUN145291	578101	6947517	0.8	25.6	7.1	66	0.05	5.7	1.7	0.3	0.2	260	0.2	0.03
RUN145293	578205	6947519	0.5	28	5.8	64	0.05	6.7	10.6	0.4	0.1	237	0.2	0.03

SampleID	UTM Easting	UTM Northing	Mo	Cu	Pb	Zn	Ag	As	Au	Sb	Bi	Ba	W	Hg
RUN145295	578209	6947239	0.6	21.8	6.1	62	0.05	6.8	2.2	0.3	0.1	210	0.3	0.04
RUN145296	578220	6947286	0.6	20.6	6.5	53	0.05	5.1	2.7	0.3	0.1	194	0.2	0.03
RUN145347	568731	6945903	0.4	24.6	5.2	43	0.05	3.3	2.8	0.3	0.05	151	0.1	0.08
RUN145347	568731	6945903	0.3	27.6	5.1	48	0.05	3.6	15.5	0.3	0.1	149	0.1	0.07
RUN145348	568727	6945953	0.4	32.5	4.3	45	0.05	5	7.1	0.3	0.05	142	0.3	0.03
RUN145349	568726	6946003	0.3	20.5	4.6	46	0.05	4.4	3.9	0.3	0.1	147	0.3	0.04
RUN145350	568723	6946054	0.3	25.2	4.9	44	0.05	7.3	3.1	0.3	0.1	135	0.2	0.06
RUN145351	568719	6946104	0.3	23.4	4.8	44	0.05	7.8	5.2	0.3	0.05	129	0.3	0.04
RUN145352	568713	6946155	0.2	22.2	4.7	45	0.05	6.4	5.5	0.3	0.05	150	0.2	0.03
RUN145353	568717	6946206	0.2	20.2	5.6	42	0.05	5.3	7.6	0.4	0.1	172	0.2	0.05
RUN145354	568715	6946257	0.2	20.8	4.3	34	0.05	3.5	1.9	0.4	0.05	136	0.1	0.04
RUN145355	568707	6946307	0.3	22.2	6.3	43	0.05	5.7	3.3	0.3	0.1	163	0.2	0.04
RUN145356	568704	6946356	0.4	20.2	5.4	54	0.05	6.6	5.7	0.3	0.1	176	0.2	0.03
RUN145358	568702	6946457	0.4	20.5	5.5	48	0.1	7.3	3.2	0.3	0.05	127	0.1	0.04
RUN145363	568690	6946658	0.4	16	5.6	88	0.05	4.9	2.9	0.3	0.05	387	0.1	0.005
RUN145364	568680	6946708	0.9	28.1	8.3	53	0.05	10.1	2.7	0.5	0.2	204	0.05	0.05
RUN145365	568681	6946759	0.9	17.7	7.9	58	0.05	7.9	2.8	0.3	0.1	172	0.1	0.03
RUN145367	568697	6946858	0.5	20.3	8.6	103	0.05	6.3	3.2	0.3	0.05	299	0.1	0.02
RUN145368	568705	6946907	0.9	13.9	6.9	40	0.05	7.6	1.5	0.4	0.1	124	0.1	0.02
RUN145369	568715	6946957	0.4	11.5	8.4	118	0.05	5	0.5	0.2	0.05	372	0.05	0.005
RUN145370	568738	6947005	0.5	16.3	7.4	72	0.05	5.4	0.9	0.2	0.05	304	0.05	0.02
RUN145371	568725	6947055	0.5	15	7.1	82	0.05	3.7	0.7	0.4	0.05	321	0.05	0.02
RUN145372	568750	6947099	0.6	20.3	5.8	64	0.05	6.2	1.2	0.3	0.05	255	0.1	0.02
RUN145373	568771	6947145	0.3	23.3	6.6	68	0.05	4.1	4.9	0.3	0.05	234	0.05	0.03
RUN145374	568794	6947191	0.3	13.4	7.9	67	0.05	2.8	0.7	0.2	0.05	636	0.1	0.01
RUN145375	568814	6947237	0.7	25.9	8.5	55	0.05	8.5	1.8	0.3	0.1	217	0.05	0.03
RUN145376	568844	6947277	0.8	21.1	9.2	64	0.05	6.2	2.2	0.3	0.2	254	0.05	0.02
RUN145377	568865	6947324	0.7	22.9	7.6	53	0.05	8.9	4.5	0.4	0.1	193	0.05	0.03
RUN145378	568893	6947367	0.9	17	8.7	58	0.05	7.9	1.3	0.3	0.1	240	0.1	0.02
RUN145379	568913	6947415	0.5	20.7	6.9	60	0.05	7.1	1.3	0.4	0.1	244	0.1	0.02
RUN145382	577989	6945700	0.5	20.5	5.9	45	0.05	5.4	2	0.4	0.1	121	0.1	0.02
RUN145383	578037	6945714	0.5	17.9	4.8	42	0.05	4.1	6.9	0.2	0.05	133	0.05	0.02
RUN145384	578086	6945723	0.1	20.4	6.2	52	0.05	3.5	2.9	0.2	0.1	119	0.05	0.03
RUN145385	578133	6945740	0.3	22.5	4.3	40	0.05	4	5.5	0.2	0.05	129	0.05	0.03

SampleID	UTM Easting	UTM Northing	Mo	Cu	Pb	Zn	Ag	As	Au	Sb	Bi	Ba	W	Hg
RUN145386	578183	6945738	0.5	27.7	7.5	54	0.05	3.5	9.1	0.2	0.1	154	0.05	0.04
RUN145387	578232	6945752	0.3	23.1	5.3	42	0.05	3.1	1.7	0.2	0.05	139	0.05	0.02
RUN145387	578232	6945752	0.3	23.4	5.3	43	0.05	3	1.8	0.2	0.05	145	0.05	0.04
RUN145388	578278	6945772	0.4	20.2	5.7	40	0.05	3	3.7	0.2	0.05	149	0.05	0.04
RUN145389	578327	6945784	0.2	27.3	5.9	46	0.05	4.8	1.8	0.2	0.1	168	0.05	0.03
RUN145390	578375	6945802	0.6	15.8	5.9	43	0.05	5.8	0.9	0.3	0.1	90	0.05	0.02
RUN145391	578425	6945800	0.9	15	6.6	47	0.05	4.2	1.7	0.4	0.2	117	0.05	0.02
RUN145392	578475	6945808	0.9	17.4	5.2	51	0.05	7.2	1.9	0.5	0.1	88	0.05	0.03
RUN145394	578569	6945842	0.4	19.8	5.6	43	0.05	4.6	2.3	0.2	0.05	146	0.05	0.02
RUN145396	578661	6945851	0.6	13.9	6	40	0.05	5.6	0.25	0.2	0.1	102	0.05	0.01
RUN145398	578757	6945881	0.6	17.4	6.2	52	0.05	4.7	0.25	0.3	0.1	144	0.05	0.02
RUN145400	578853	6945912	0.5	10.2	6.5	38	0.05	3.8	1	0.2	0.1	116	0.05	0.02
RUN145416	577727	6950027	1	38.9	10.3	62	0.3	10.5	1.9	0.5	0.3	378	0.1	0.16
RUN145422	577687	6949752	1.2	14.5	13.5	71	0.1	46.6	3	1.2	0.9	249	0.5	0.05
RUN145423	577678	6949702	0.7	22.1	9.4	50	0.4	9	5.3	0.4	0.5	267	0.2	0.07
RUN145425	577649	6949606	1.1	17.9	12	68	0.1	8	3.1	0.5	0.3	260	0.2	0.02
RUN145430	577645	6949369	1.1	15.1	9.7	106	0.05	5.3	1.4	0.4	0.2	356	0.05	0.02
RUN145431	577645	6949318	0.6	22.1	9.2	110	0.05	8.6	0.25	0.4	0.2	322	0.1	0.02
RUN145432	577645	6949318	0.8	17.1	9.5	102	0.05	8.8	0.25	0.4	0.2	309	0.1	0.02
RUN145433	577646	6949268	1	12.8	8.6	71	0.05	5.1	0.25	0.3	0.2	387	0.1	0.01
RUN145436	577634	6949118	1.2	22	10.3	99	0.05	8.2	0.25	0.5	0.05	351	0.05	0.01
RUN145437	577634	6949118	1.2	21.1	9.9	98	0.05	8.3	0.25	0.4	0.1	358	0.05	0.01
RUN145439	577612	6949018	1.2	17.2	9.4	104	0.05	5.9	0.5	0.3	0.2	485	0.05	0.02
RUN145442	577553	6948876	1.2	15.6	8.7	84	0.2	5.6	0.25	0.4	0.1	449	0.1	0.005
RUN145443	577522	6948837	0.7	24.5	21.4	70	0.05	4.6	0.25	0.5	0.3	212	0.05	0.005
RUN145445	577459	6948758	1	18.7	6.6	75	0.05	6.5	2.1	0.4	0.1	400	0.1	0.005
RUN145447	577425	6948661	1.1	20.9	7.8	93	0.05	6.6	0.25	0.4	0.1	349	0.05	0.01
RUN145448	577402	6948618	1.4	30.3	8.8	95	0.05	7.2	2	0.4	0.1	266	0.05	0.02
RUN93696	569475	6948917	0.7	24.9	8.5	61	0.05	6.9	3.2	0.3	0.1	344	0.1	0.02
RUN108496	569616	6945303	0.4	27.5	6.3	37	0.05	5.6	3.2	0.2	0.2	154	0.1	0.02
RUN108498	569713	6945275	0.6	33.4	6.3	43	0.05	6.1	4.1	0.3	0.1	146	0.05	0.03
RUN113686	569859	6945241	0.6	26.1	7.2	41	0.05	6.4	3.9	0.3	0.2	147	0.1	0.03
RUN117727	578234	6947431	0.8	24.8	6.6	57	0.05	5.5	3.3	0.4	0.1	197	0.3	0.04
RUN118967	569742	6950081	0.4	18.1	7.2	49	0.05	6	2	0.3	0.1	190	0.1	0.03



SampleID	UTM Easting	UTM Northing	Mo	Cu	Pb	Zn	Ag	As	Au	Sb	Bi	Ba	W	Hg
RUN118969	569670	6950009	0.6	25.5	7.9	58	0.05	7.7	2.4	0.3	0.2	298	0.05	0.02
RUN130999	569478	6948866	0.6	17.5	14.1	53	0.05	6	1.5	0.3	0.2	206	0.1	0.02
RUN133036	569577	6949885	0.5	22.4	7.2	46	0.05	5.2	3.4	0.3	0.1	204	0.05	0.03
RUN133036	569577	6949885	0.5	21.8	7.5	45	0.05	5.2	2.5	0.3	0.1	195	0.05	0.02
RUN133037	569546	6949843	0.5	25.5	6.6	49	0.05	5.3	3.2	0.3	0.1	197	0.1	0.04
RUN133038	569525	6949798	0.6	29.1	6.9	53	0.05	6.3	3.5	0.4	0.1	231	0.1	0.03
RUN133051	570485	6945069	0.4	31.5	6.5	39	0.05	6	5.2	0.3	0.1	172	0.1	0.02
RUN133056	570711	6944958	0.6	22.5	6.7	33	0.05	14	2.3	0.6	0.2	143	0.2	0.02
RUN138053	569601	6948892	0.9	19.2	8.1	53	0.05	7.5	6.1	0.3	0.1	232	0.1	0.03
RUN138055	569700	6948862	0.5	17.7	7.3	50	0.05	6.2	1.6	0.3	0.1	245	0.1	0.02
RUN138056	569747	6948849	0.7	15.7	6.7	52	0.05	5.5	2.3	0.2	0.1	235	0.2	0.02
RUN138057	569795	6948834	0.6	18.2	6.7	52	0.05	5.6	2.2	0.3	0.1	281	0.05	0.02
RUN138299	569467	6945292	0.5	29.3	6.6	40	0.05	6.3	2.2	0.2	0.1	169	0.1	0.02
RUN138305	569169	6945268	0.4	31.8	5.6	40	0.05	6	1.6	0.2	0.1	149	0.05	0.02
RUN138306	569119	6945261	0.5	52.3	5.1	35	0.05	5.8	3.4	0.2	0.1	172	0.05	0.03
RUN138307	569069	6945253	0.6	37.6	6.2	46	0.05	7	3	0.3	0.1	167	0.05	0.02
RUN138309	568970	6945243	0.5	48.3	6.1	47	0.05	6.5	5.6	0.3	0.2	162	0.05	0.02
RUN138310	568920	6945239	0.6	38.2	6.4	43	0.05	5.1	8.2	0.3	0.1	146	0.1	0.02
RUN138311	568871	6945233	1.5	34.9	6.8	50	0.1	6.5	6.6	0.4	0.1	106	0.1	0.06
RUN138312	568821	6945225	1	25.7	5.7	42	0.05	6.1	8.5	0.3	0.1	96	0.2	0.03
RUN138313	568770	6945226	1.2	16.8	5.9	31	0.05	5.5	1	0.4	0.1	55	0.1	0.04
RUN138314	568720	6945225	0.5	37.8	5.9	48	0.05	5.8	3.3	0.3	0.1	148	0.1	0.03
RUN138315	568670	6945222	0.9	35.5	5.7	45	0.05	11.3	1.9	0.3	0.1	124	0.1	0.03
RUN138316	568649	6945267	0.5	51.1	4.9	47	0.05	5.8	3.7	0.3	0.1	103	0.05	0.03
RUN138317	568656	6945317	0.5	53.3	5	54	0.05	6	6.3	0.3	0.05	116	0.2	0.02
RUN138320	568696	6945464	0.4	32.8	5.9	48	0.05	4.8	3.3	0.4	0.1	147	0.2	0.03
RUN138330	571407	6949246	0.5	15.1	9.3	59	0.05	4.4	0.8	0.3	0.2	272	0.05	0.01
RUN138332	571488	6949189	0.5	25.2	6.5	51	0.05	6.7	4.8	0.4	0.1	238	0.1	0.03
RUN138333	571515	6949147	0.7	16.1	8.1	43	0.05	4.6	1	0.3	0.1	158	0.05	0.01
RUN138334	571548	6949109	0.5	23	6.4	51	0.05	5.9	6.2	0.3	0.1	247	0.1	0.02
RUN138336	571585	6949074	0.6	27.1	9.2	57	0.05	5.2	2.6	0.3	0.1	226	0.05	0.02
RUN138338	571669	6949023	0.4	27.9	6.6	54	0.05	5.2	7	0.3	0.1	245	0.1	0.03
RUN138339	571705	6948989	0.4	20.1	7.4	47	0.05	5	2.3	0.3	0.1	203	0.1	0.02
RUN138340	571738	6948951	0.5	20.1	7.5	44	0.05	5.8	3	0.3	0.2	242	0.1	0.02

SampleID	UTM Easting	UTM Northing	Mo	Cu	Pb	Zn	Ag	As	Au	Sb	Bi	Ba	W	Hg
RUN138341	571778	6948921	0.4	24.3	5.8	49	0.05	5.6	4.2	0.3	0.2	264	0.1	0.02
RUN138342	571812	6948884	0.4	21.1	6.3	44	0.05	5.7	4.4	0.3	0.1	227	0.2	0.03
RUN138343	571850	6948852	0.5	21.2	5.6	51	0.05	5.3	4.4	0.3	0.1	269	0.2	0.02
RUN138344	571888	6948819	0.5	27	6.7	56	0.05	6.3	3.1	0.4	0.1	300	0.1	0.02
RUN138345	571925	6948785	0.4	28	6.8	56	0.05	6.2	10.8	0.3	0.2	274	0.1	0.03
RUN138346	571964	6948753	0.4	26.5	6.7	46	0.05	6.3	6.8	0.3	0.1	257	0.2	0.03
RUN138347	572005	6948724	0.6	19.1	6.1	56	0.05	7.6	7.5	0.3	0.1	316	0.4	0.02
RUN138348	572042	6948690	0.6	21.8	7	56	0.05	6.8	7.9	0.3	0.1	226	0.2	0.03
RUN138349	572073	6948652	0.4	26.9	6.4	50	0.05	5.7	6.3	0.3	0.1	196	0.1	0.04
RUN138351	572156	6948596	0.6	38.5	9.2	57	0.05	7	3.3	0.5	0.1	180	0.1	0.03
RUN138355	572318	6948478	0.6	39.6	6.9	53	0.05	6.9	6.3	0.5	0.1	184	0.1	0.03
RUN139029	570336	6945090	0.4	59.1	6.6	44	0.05	5.7	2.5	0.2	0.1	168	0.05	0.02
RUN139049	577836	6945590	0.4	26.5	4.9	41	0.05	3.8	1.3	0.2	0.1	146	0.05	0.03
RUN139050	577854	6945637	0.5	27.7	5	49	0.05	5.2	2.4	0.3	0.1	142	0.05	0.02
RUN139052	577880	6945734	0.8	19.3	6	60	0.05	5.7	4.5	0.3	0.1	182	0.05	0.04
RUN139053	577895	6945782	0.3	23.3	5.4	47	0.05	3.3	7.1	0.2	0.1	140	0.1	0.03
RUN139057	577957	6945975	0.3	26.3	5.3	47	0.05	3.2	5	0.2	0.05	120	0.1	0.03
RUN139058	577975	6946023	0.3	25.7	7.6	50	0.05	2.5	2.2	0.2	0.1	142	0.05	0.04
RUN139059	577987	6946072	1.2	27.6	6.2	57	0.05	6.3	1.3	0.5	0.1	153	0.05	0.04
RUN139060	578010	6946117	1.1	24.2	6.9	52	0.05	7.2	0.25	0.5	0.2	207	0.05	0.03
RUN139062	578043	6946212	1	21.6	7.3	52	0.05	9.7	0.25	0.3	0.2	145	0.05	0.03
RUN139077	578163	6946903	1.5	20.8	10.9	58	0.2	10.4	2.9	0.4	0.2	137	0.2	0.04
RUN139494	570839	6948167	0.6	31.1	7.3	71	0.05	6.9	2.3	0.3	0.1	231	0.1	0.03
RUN139494	570839	6948167	0.6	30.6	7.1	72	0.05	6.7	2.2	0.3	0.1	223	0.05	0.03
RUN139495	570885	6948145	0.5	32.7	6.9	62	0.05	7.4	2.2	0.4	0.1	199	0.05	0.03
RUN139496	569502	6949753	1	17.7	9	48	0.05	7.6	4.1	0.4	0.1	196	0.1	0.03
RUN139497	569477	6949709	0.5	24.4	6.8	49	0.05	5.7	3	0.4	0.1	232	0.05	0.02
RUN139498	569435	6949681	0.4	27.6	7	51	0.05	5.5	2.7	0.3	0.1	245	0.1	0.02
RUN139498	569435	6949681	0.4	26.8	6.8	52	0.05	5.5	2.8	0.3	0.1	252	0.05	0.03
RUN139587	577847	6947503	0.6	28	6.8	63	0.05	5.2	2	0.3	0.1	259	0.2	0.03
RUN139587	577847	6947503	0.6	24.4	7	56	0.05	5.1	1.4	0.3	0.1	253	0.2	0.03
RUN139588	577795	6947509	1.4	22.8	7.2	56	0.05	4.7	3.1	0.3	0.1	250	0.2	0.03
RUN139592	577588	6947484	1.1	20.1	6.8	53	0.05	5.5	6.8	0.3	0.1	219	0.05	0.01
RUN139593	577530	6947479	1	22.8	6.6	57	0.05	6.2	2.1	0.3	0.1	233	0.2	0.02

SampleID	UTM Easting	UTM Northing	Mo	Cu	Pb	Zn	Ag	As	Au	Sb	Bi	Ba	W	Hg
RUN139594	577479	6947495	1.3	14.9	8.3	55	0.05	5.4	2	0.3	0.1	202	0.1	0.01
RUN139595	577427	6947494	1.6	17.5	9	53	0.05	6.3	1.8	0.3	0.1	195	0.1	0.02
RUN139596	577381	6947469	1.4	18.6	10.1	52	0.1	7.5	1.8	0.4	0.2	223	0.1	0.02
RUN139597	577330	6947456	1.6	16.3	10.6	51	0.05	7.9	3.6	0.4	0.2	183	0.05	0.01
RUN139598	577279	6947453	1	30.5	11.6	63	0.05	5.9	4.7	0.4	0.2	269	0.05	0.02
RUN139599	577228	6947442	1.4	21.8	20.8	55	0.05	6.7	2.4	0.4	0.3	212	0.05	0.02
RUN139599	577228	6947442	1.5	21	20.3	53	0.05	6.3	1.6	0.4	0.2	206	0.05	0.02
RUN139600	577170	6947447	0.9	35.9	9.4	51	0.05	7.7	3.8	0.5	0.2	277	0.05	0.04
RUN139601	577120	6947433	0.9	24.1	15.8	87	0.05	4.9	1.4	0.5	0.1	364	0.2	0.01
RUN139602	577070	6947437	1.2	27.6	10.5	60	0.05	9.7	1.7	0.6	0.2	273	0.1	0.02
RUN139603	577017	6947445	1	22.5	9.6	50	0.05	9.1	3.2	0.4	0.2	268	0.05	0.01
RUN139604	576968	6947442	0.7	39	13.4	59	0.05	7.8	3.6	0.5	0.2	271	0.05	0.04
RUN139605	576919	6947442	1.1	30.4	11.2	84	0.05	5.2	1.8	0.3	0.2	413	0.05	0.01
RUN139606	576867	6947449	1	18.9	9.4	56	0.05	8.5	2.5	0.4	0.2	253	0.05	0.01
RUN139607	576820	6947452	0.9	26.2	8.7	85	0.05	6	7.1	0.4	0.2	427	0.05	0.02
RUN139608	576769	6947457	1.1	25.1	13	88	0.05	7.9	2.3	0.5	0.2	206	0.05	0.01
RUN139609	576713	6947454	0.8	27.6	18.7	59	0.1	6.1	1.5	0.5	0.3	169	0.1	0.01
RUN139610	576713	6947454	0.8	22.2	16.7	55	0.05	6.1	1.7	0.4	0.2	156	0.1	0.02
RUN139610	576713	6947454	0.9	21.9	17.2	56	0.1	6.3	1.1	0.5	0.2	155	0.2	0.02
RUN139611	573596	6949084	0.7	16.7	11.1	74	0.05	6.1	0.8	0.4	0.2	261	0.05	0.01
RUN139612	573646	6949069	0.4	8.7	6.3	78	0.05	5.1	0.25	0.3	0.05	301	0.05	0.005
RUN139613	573667	6949021	0.7	22.9	12	109	0.05	8.5	0.25	0.5	0.2	484	0.1	0.01
RUN139614	573675	6948965	0.9	14.5	9	86	0.05	5.4	0.25	0.4	0.1	405	0.05	0.01
RUN139615	573690	6948916	0.7	13.1	12.2	103	0.05	5.2	2	0.3	0.2	339	0.1	0.01
RUN139616	573721	6948870	0.9	17.3	10.5	80	0.05	7.8	0.5	0.4	0.1	385	0.05	0.005
RUN139617	573756	6948828	0.8	18.1	8.5	73	0.05	6.4	0.25	0.4	0.1	490	0.1	0.01
RUN139618	573792	6948795	0.8	10	9.9	91	0.05	5	0.25	0.2	0.05	423	0.1	0.005
RUN139619	573833	6948764	1	13.3	11	82	0.05	5.2	3.7	0.4	0.1	381	0.05	0.01
RUN139620	573870	6948727	0.8	11.9	10.8	64	0.05	5.2	0.25	0.5	0.2	233	0.05	0.005
RUN139621	573908	6948691	0.5	16.9	8.8	74	0.05	7.1	1.5	0.3	0.2	308	0.05	0.01
RUN139622	573947	6948658	0.6	11.7	15.8	59	0.05	5.2	1.2	0.3	0.1	228	0.05	0.01
RUN139624	574004	6948575	0.6	15.3	10	59	0.05	6.8	0.6	0.4	0.1	239	0.05	0.005
RUN139626	574069	6948504	0.8	17.2	7.8	83	0.05	6.6	1.6	0.4	0.1	338	0.1	0.01
RUN139627	574118	6948485	0.9	13.7	9.5	70	0.05	5.4	1.6	0.4	0.1	324	0.05	0.005

SampleID	UTM Easting	UTM Northing	Mo	Cu	Pb	Zn	Ag	As	Au	Sb	Bi	Ba	W	Hg
RUN139628	574169	6948474	0.7	23.4	7.5	60	0.05	6.5	1.7	0.3	0.1	329	0.05	0.02
RUN139628	574169	6948474	0.7	23.5	7.3	58	0.05	6.8	2.7	0.3	0.1	318	0.1	0.01
RUN139633	574331	6948269	0.6	16.8	10.4	72	0.05	6.6	0.25	0.3	0.05	358	0.05	0.01
RUN139635	574388	6948185	0.6	15	9.1	74	0.05	6.4	0.5	0.4	0.2	433	0.05	0.02
RUN139636	574402	6948136	1.1	14.3	10.5	47	0.05	5	0.9	0.3	0.2	234	0.1	0.03
RUN139637	574411	6948084	0.8	22.8	9.5	64	0.05	7.3	2.7	0.3	0.1	330	0.05	0.02
RUN139637	574411	6948084	0.6	23.4	9.6	65	0.05	7.3	3	0.3	0.2	336	0.2	0.02
RUN139638	574389	6948033	0.9	19.6	14.3	102	0.05	9.8	1.1	0.4	0.5	471	0.2	0.01
RUN139639	574418	6947989	0.7	15.4	9.2	49	0.05	6.4	2.4	0.3	0.1	237	0.05	0.005
RUN139640	574446	6947945	0.6	9.1	11.6	75	0.05	3.4	0.25	0.4	0.1	292	0.05	0.01
RUN139641	574460	6947896	0.6	14.6	9.3	97	0.05	6.3	0.25	0.4	0.1	513	0.05	0.005
RUN139642	574448	6947847	0.9	21.7	11.7	74	0.05	9.1	1.2	0.5	0.2	291	0.05	0.02
RUN139642	574448	6947847	0.9	25.4	11.7	79	0.05	9.6	2.1	0.6	0.2	322	0.05	0.01
RUN139643	574448	6947847	1.1	22.7	10.6	80	0.05	9.3	2.5	0.6	0.2	327	0.05	0.005
RUN139644	574462	6947798	0.5	34.1	15.9	105	0.05	4.5	0.25	0.4	0.1	609	0.05	0.01
RUN139645	574462	6947798	0.4	13.3	9	87	0.05	4.5	0.25	0.3	0.1	582	0.05	0.02
RUN139735	578953	6949746	0.9	33	8.8	70	0.2	4.9	2.9	0.3	0.3	345	0.3	0.04
RUN139739	578943	6949541	0.8	37.7	7.1	71	0.1	7	2.1	0.3	0.2	443	0.1	0.03
RUN139741	578945	6949490	1	24.6	7.2	64	0.05	6.3	1.4	0.3	0.2	350	0.2	0.02
RUN139742	578946	6949438	1.2	15	10.7	75	0.05	4.6	0.25	0.3	0.2	339	0.1	0.02
RUN139744	578943	6949338	1.1	15	14.6	85	0.05	8.8	0.25	0.6	0.2	454	0.05	0.01
RUN139745	578934	6949287	0.8	19.5	20	98	0.05	5.1	1	0.5	0.2	205	0.1	0.01
RUN139746	578932	6949235	0.8	21.8	13.3	74	0.05	5.3	0.25	0.4	0.2	219	0.05	0.01
RUN139832	569471	6948833	0.4	19.2	9.6	63	0.05	5.1	0.9	0.3	0.1	347	0.1	0.01
RUN139841	569349	6948403	0.5	20.3	7.5	54	0.05	5.3	0.8	0.3	0.1	252	0.1	0.02
RUN143221	569427	6949118	0.9	21.5	8.4	58	0.05	9	4.8	0.4	0.2	213	0.1	0.03
RUN143222	569435	6949065	0.6	21	8.5	49	0.05	9.1	7.2	0.3	0.2	187	0.1	0.01
RUN144529	571358	6947884	0.5	11.1	10.7	85	0.05	5.1	0.25	0.2	0.1	264	0.05	0.005
RUN144531	571447	6947843	0.9	21.7	14.2	78	0.05	8.7	1.1	0.5	0.2	126	0.05	0.01
RUN144572	571908	6947690	0.3	22	8	94	0.05	3.3	1.1	0.2	0.2	366	0.05	0.02
RUN144573	571957	6947680	0.5	29	6.3	64	0.05	7	4.6	0.3	0.2	236	0.1	0.02
RUN144577	572154	6947642	0.6	18.1	10.1	95	0.1	7.4	0.25	0.3	0.2	329	0.2	0.005
RUN144578	572154	6947652	0.5	16.3	9.9	81	0.05	5.6	0.25	0.2	0.1	305	0.1	0.005
RUN144580	572228	6947583	0.3	17.4	10.3	89	0.05	8.9	0.25	0.3	0.1	418	0.1	0.005

SampleID	UTM Easting	UTM Northing	Mo	Cu	Pb	Zn	Ag	As	Au	Sb	Bi	Ba	W	Hg
RUN144580	572228	6947583	0.3	17.5	10.3	88	0.05	8.4	0.7	0.4	0.1	408	0.1	0.005
RUN144582	572322	6947611	0.4	20.3	6.7	72	0.05	3.7	1.5	0.3	0.1	354	0.1	0.02
RUN144689	578860	6948832	0.7	19.2	10.4	75	0.05	3.1	1	0.3	0.1	434	0.05	0.01
RUN144690	578846	6948783	0.8	18.6	10.2	52	0.05	5.9	1.9	0.3	0.1	271	0.1	0.02
RUN144691	578837	6948733	0.6	19.5	13.2	81	0.05	2.2	0.7	0.5	0.05	351	0.05	0.005
RUN144798	575519	6950023	0.6	14	13.1	53	0.05	5.7	1	0.5	0.05	241	0.4	0.01
RUN144799	575546	6949979	0.6	20.5	8.5	55	0.05	6.7	0.9	0.4	0.1	283	0.2	0.005
RUN144803	575617	6949797	0.9	20.4	12.1	93	0.05	8	0.5	0.5	0.2	398	0.1	0.01
RUN144805	575603	6949702	0.9	22.1	13.4	63	0.05	8.3	2.2	2.3	0.1	252	2	0.01
RUN144807	575585	6949602	0.9	13.8	9.6	102	0.05	4.2	0.25	0.4	0.2	391	0.1	0.01
RUN144808	575577	6949552	0.5	9.1	9.7	75	0.05	4.8	1.3	0.4	0.05	291	0.2	0.005
RUN144809	575562	6949503	0.7	16.1	9.6	75	0.05	7	2.3	0.5	0.1	268	0.2	0.02
RUN144810	575542	6949457	0.8	12.5	9.5	74	0.05	5	1.3	0.4	0.2	247	0.05	0.01
RUN144811	575532	6949406	0.7	18.5	12.8	80	0.05	6.5	2.2	0.3	0.2	314	0.1	0.01
RUN144812	575524	6949357	0.4	7.5	14.1	53	0.05	3.5	4.3	0.2	0.5	174	0.3	0.01
RUN144813	575520	6949307	1.4	9.6	14.1	57	0.05	9.2	0.7	0.4	0.1	217	0.1	0.01
RUN144814	575513	6949257	0.7	13.6	9.2	83	0.05	7.9	1.1	0.4	0.2	343	0.2	0.02
RUN144815	575505	6949207	0.8	14.2	7.2	83	0.05	8.4	1.8	0.4	0.1	393	0.05	0.01
RUN144816	575500	6949157	0.5	10.3	17	57	0.05	3.7	0.7	0.3	0.1	231	0.05	0.01
RUN144817	575512	6949108	0.05	14.8	9	75	0.2	2.1	3.9	0.2	0.05	65	0.2	0.03
RUN144818	575542	6949068	0.9	12.5	11.5	78	0.05	5.1	1.4	0.5	0.1	252	0.1	0.005
RUN144819	575577	6949030	0.9	15.5	9.2	75	0.05	6.7	1.1	0.5	0.1	355	0.05	0.005
RUN144819	575577	6949030	0.9	15.3	8.9	75	0.05	6.8	0.25	0.5	0.1	359	0.05	0.005
RUN144820	575592	6948981	0.8	21	12.8	101	0.05	8.2	0.25	0.5	0.2	413	0.1	0.01
RUN144821	575627	6948945	0.7	15.2	7.9	87	0.05	6	1.2	0.4	0.1	519	0.1	0.005
RUN144822	575672	6948921	0.8	27.6	10.2	102	0.05	10.7	0.25	0.7	0.1	466	0.2	0.01
RUN144823	575712	6948887	0.7	18.2	9.2	87	0.05	8	0.25	0.5	0.1	377	0.05	0.01
RUN144824	575750	6948855	0.9	14.2	9.1	94	0.05	5.9	1.1	0.5	0.1	262	0.1	0.005
RUN144825	575771	6948810	0.4	9.9	7.3	78	0.05	5	0.25	0.3	0.05	1702	0.1	0.005
RUN144826	575794	6948763	0.9	29.1	7.3	96	0.05	7.9	0.25	0.6	0.2	513	0.05	0.01
RUN144827	575797	6948711	0.4	11.7	5.5	85	0.05	3.4	0.6	0.2	0.1	539	0.05	0.02
RUN144851	570043	6950145	0.9	19.7	12	51	0.1	8	3.9	0.3	0.2	240	0.1	0.02
RUN144852	570093	6950137	0.9	17.9	14.4	54	0.4	4	4.1	0.3	0.2	203	0.1	0.04
RUN144853	570143	6950123	0.7	23.5	12.9	58	0.2	6.6	2.2	0.3	0.2	213	0.2	0.02

SampleID	UTM Easting	UTM Northing	Mo	Cu	Pb	Zn	Ag	As	Au	Sb	Bi	Ba	W	Hg
RUN144854	570191	6950112	1	24.4	23.8	62	0.2	5.8	13.5	0.4	0.3	240	0.2	0.04
RUN144855	570240	6950104	1	18.5	11.4	60	0.3	4.5	2.5	0.3	0.2	203	0.2	0.05
RUN144856	570291	6950105	0.7	28.2	14.7	54	0.2	4.3	5.6	0.3	0.2	274	0.2	0.03
RUN144857	570341	6950097	0.6	21.1	13.8	64	0.05	4.8	1.4	0.2	0.1	227	0.2	0.02
RUN144858	570389	6950083	0.6	20.7	13.6	56	0.2	4	2.3	0.2	0.2	245	0.2	0.03
RUN144859	570436	6950068	0.5	17.5	10.4	58	0.05	4.6	2.7	0.2	0.1	232	0.2	0.02
RUN144860	570483	6950050	0.7	19.7	11.4	53	0.05	7.3	3	0.3	0.2	244	0.1	0.02
RUN144861	570527	6950027	0.5	16.6	9.4	54	0.05	7.1	1.4	0.3	0.2	258	0.2	0.02
RUN144862	570562	6949994	1	13.2	8.4	50	0.05	4.7	1.3	0.2	0.2	210	0.1	0.02
RUN144862	570562	6949994	1	13.7	8.9	50	0.05	4.6	2	0.3	0.2	204	0.1	0.03
RUN144863	570609	6949970	0.6	14.6	9.6	65	0.05	4.2	0.9	0.2	0.1	331	0.1	0.02
RUN144864	570609	6949970	0.7	15	9.7	65	0.05	5.1	5.8	0.3	0.2	310	0.2	0.02
RUN144865	570651	6949942	0.4	15.4	8.1	54	0.05	5.4	2.8	0.2	0.2	226	0.1	0.02
RUN144866	570689	6949909	0.6	18.1	7.1	54	0.05	5.3	3.1	0.3	0.1	211	0.2	0.02
RUN144867	570729	6949881	0.7	19.4	7.8	54	0.2	3.7	1.7	0.3	0.1	192	0.05	0.03
RUN144868	570775	6949861	0.7	19.6	5.9	47	0.05	5.2	2.9	0.2	0.1	170	0.1	0.02
RUN144869	570818	6949834	0.8	22.7	8	48	0.05	8.8	3.9	0.4	0.1	161	0.1	0.02
RUN144870	570856	6949801	0.6	23.3	6.7	51	0.05	5.1	2.3	0.3	0.1	204	0.1	0.03
RUN144871	570899	6949774	0.4	22.1	7.6	52	0.05	6.5	3.6	0.4	0.1	211	0.1	0.02
RUN144872	570936	6949740	0.6	24.5	6.9	54	0.05	5.5	3	0.3	0.1	211	0.1	0.02
RUN144873	570970	6949705	0.5	23.1	7.8	53	0.05	6.5	1.7	0.3	0.2	222	0.1	0.03
RUN144873	570970	6949705	0.5	21.9	7.5	52	0.05	6.3	1.6	0.3	0.2	218	0.1	0.01
RUN144874	570993	6949659	0.5	21.2	7	51	0.05	4.4	3.7	0.3	0.1	248	0.05	0.02
RUN144875	571021	6949617	1	17	8.5	33	0.3	5.1	2.7	0.3	0.2	135	0.05	0.03
RUN144876	571064	6949590	0.4	22.8	7.7	48	0.05	6	5	0.3	0.1	197	0.1	0.02
RUN144877	571093	6949551	0.5	25.2	7.7	50	0.05	7.7	9.2	0.3	0.1	199	0.1	0.02
RUN144878	571123	6949509	0.6	19.9	8.2	51	0.05	7.3	0.7	0.3	0.2	193	0.1	0.01
RUN144879	571146	6949465	0.7	24.7	8.4	47	0.05	7.4	1.7	0.4	0.2	214	0.1	0.02
RUN144880	571177	6949424	0.4	26.4	7.4	48	0.05	6.9	1.8	0.4	0.1	194	0.05	0.02
RUN144881	571217	6949392	0.6	20.2	7.6	56	0.05	5.5	2.8	0.3	0.1	186	0.1	0.02
RUN144882	571248	6949353	0.7	21.8	8.5	48	0.05	6.5	0.25	0.4	0.2	211	0.1	0.02
RUN144883	571292	6949326	0.7	20.1	8.2	54	0.1	5	4.2	0.3	0.1	205	0.1	0.02
RUN144883	571292	6949326	0.8	21.6	8.5	52	0.1	5.3	2.6	0.3	0.1	210	0.1	0.02
RUN145008	569423	6949168	0.7	21.2	7.4	55	0.05	8.9	1.6	0.3	0.1	225	0.1	0.01

SampleID	UTM Easting	UTM Northing	Mo	Cu	Pb	Zn	Ag	As	Au	Sb	Bi	Ba	W	Hg
RUN145010	569390	6949655	0.5	23.3	7.2	50	0.1	5.1	4.2	0.3	0.1	244	0.05	0.03
RUN145013	569293	6949540	0.5	25.4	6.5	53	0.05	6	5.1	0.3	0.1	243	0.05	0.02
RUN145116	577813	6945718	0.3	18.2	3.9	50	0.05	3.4	0.25	0.1	0.05	82	0.05	0.02
RUN145117	577761	6945715	0.4	25.9	6.6	49	0.05	3.8	2.8	0.3	0.1	122	0.05	0.04
RUN145118	577709	6945714	0.3	22.3	7	49	0.05	3.2	2.1	0.2	0.1	147	0.05	0.03
RUN145119	577659	6945715	0.5	31.2	5.4	37	0.05	5.6	0.7	0.4	0.05	93	0.05	0.05
RUN145120	577608	6945719	0.5	21.6	6.9	39	0.05	7.2	0.7	0.3	0.1	151	0.1	0.03
RUN145121	577565	6945748	0.6	19.4	6.4	54	0.05	6	3.2	0.3	0.1	220	0.05	0.02
RUN145122	577526	6945780	0.9	23.8	7.9	56	0.05	7.4	1.9	0.5	0.1	159	0.05	0.02
RUN145123	577479	6945800	0.8	25.1	8	51	0.05	6.9	2.4	0.3	0.1	161	0.05	0.02
RUN145124	577449	6945840	0.8	25.7	7.1	47	0.05	5.9	1	0.4	0.1	179	0.05	0.02
RUN145125	577405	6945864	0.6	27.4	5.9	47	0.05	5.6	5.7	0.4	0.1	135	0.1	0.03
RUN145127	577322	6945906	0.4	26.3	5.6	52	0.05	5.5	0.9	0.3	0.1	135	0.05	0.04
RUN145130	577185	6945969	0.6	23.1	5.7	46	0.05	5.8	1.9	0.2	0.1	121	0.05	0.02
RUN145138	576823	6946144	0.4	21.2	5.6	51	0.05	3.9	2.8	0.3	0.1	112	0.2	0.03
RUN145139	576776	6946164	0.5	17.6	5.2	43	0.05	4	5.6	0.2	0.1	108	0.1	0.03
RUN145140	576743	6946204	0.4	19.8	5.4	44	0.05	4.6	0.25	0.2	0.2	110	0.2	0.02
RUN145143	576640	6946316	0.2	21.5	4.3	51	0.05	3.6	3.4	0.2	0.1	112	0.1	0.03
RUN145156	572415	6950137	0.3	34.4	25.8	54	0.05	5.4	3	1	0.2	127	0.2	0.02
RUN145157	572464	6950123	0.3	10.4	11.3	62	0.05	4.6	1.4	0.3	0.1	339	0.1	0.01
RUN145158	572464	6950123	0.3	11	10.6	64	0.05	5.6	2.1	0.4	0.05	336	0.2	0.01
RUN145159	572511	6950102	0.4	8.1	9.3	53	0.05	4.2	0.6	0.3	0.05	530	0.05	0.005
RUN145160	572553	6950071	0.7	16.9	9.6	65	0.05	5.3	1.2	0.3	0.1	608	0.1	0.01
RUN145161	572590	6950037	0.3	16.1	7.4	52	0.05	4.3	3.2	0.3	0.05	397	0.05	0.01
RUN145163	572676	6949983	0.7	10.5	14.7	70	0.05	4.9	1.5	0.3	0.1	190	0.05	0.02
RUN145164	572709	6949946	0.6	17.1	9.7	78	0.05	5.5	1.6	0.3	0.2	355	0.1	0.005
RUN145165	572755	6949926	0.5	26.5	9.4	64	0.05	6.2	3	0.3	0.1	389	0.05	0.02
RUN145166	572803	6949942	0.6	12.9	10.9	59	0.05	4.7	1.2	0.3	0.1	217	0.1	0.005
RUN145167	572850	6949924	0.6	33.4	8.5	51	0.05	10.7	3.4	0.4	0.2	199	0.05	0.02
RUN145168	572891	6949896	0.5	32	9.6	62	0.05	7.3	3	0.5	0.2	206	0.05	0.03
RUN145171	573011	6949805	0.3	10.3	9.7	71	0.05	5.9	0.25	0.2	0.05	416	0.2	0.005
RUN145172	573052	6949775	0.4	10.2	10.7	71	0.05	5.7	0.25	0.3	0.05	153	0.3	0.005
RUN145173	573089	6949740	0.6	13.2	12.4	81	0.05	6.1	0.25	0.4	0.1	162	0.5	0.005
RUN145174	573127	6949707	0.9	15.6	9.7	81	0.05	6.8	0.6	0.4	0.1	298	0.1	0.01

SampleID	UTM Easting	UTM Northing	Mo	Cu	Pb	Zn	Ag	As	Au	Sb	Bi	Ba	W	Hg
RUN145175	573158	6949668	1	13.8	13.2	87	0.05	6.7	0.25	0.5	0.1	250	0.05	0.01
RUN145176	573197	6949634	0.3	6.1	10.9	41	0.05	3.9	0.25	0.2	0.2	209	0.05	0.005
RUN145177	573227	6949595	0.6	10.9	10	82	0.05	7.6	0.25	0.5	0.1	228	0.1	0.005
RUN145178	573247	6949549	1.1	15.5	10.6	54	0.05	6.9	1.7	0.5	0.1	267	0.05	0.01
RUN145179	573273	6949506	1.3	18.1	18.3	85	0.05	8.9	2.2	0.4	0.1	592	0.2	0.005
RUN145181	573327	6949422	0.6	11.2	15.5	92	0.05	5.8	0.25	0.4	0.2	171	0.2	0.01
RUN145264	578796	6948572	0.7	15.8	8.1	45	0.05	4.2	2.2	0.2	0.1	222	0.05	0.02
RUN145267	578761	6948476	0.7	23.2	7.5	69	0.05	4.6	1.1	0.3	0.2	388	0.05	0.005
RUN145269	578715	6948382	0.7	31.5	7.5	59	0.05	5.6	3.6	0.3	0.1	427	0.2	0.03
RUN145273	578646	6948186	0.5	25.7	7.1	67	0.05	5.7	3.5	0.3	0.2	358	0.1	0.02
RUN145276	578586	6948046	0.8	16.6	10.7	63	0.05	4.3	0.6	0.3	0.1	325	0.05	0.01
RUN145277	578556	6948001	0.4	19.6	8.6	67	0.05	5	0.8	0.3	0.1	213	0.05	0.01
RUN145278	578531	6947957	0.5	16.2	9.9	83	0.05	2	0.9	0.2	0.1	1321	0.05	0.01
RUN145280	578474	6947868	0.8	23.2	8.7	57	0.05	6.5	1.3	0.3	0.2	341	0.05	0.02
RUN145281	578447	6947824	0.8	27.2	25.2	61	0.1	3.4	3.5	0.3	0.2	325	0.1	0.02
RUN145282	578419	6947780	1.2	19.6	9.5	62	0.1	5.1	3.1	0.3	0.2	238	0.2	0.02
RUN145283	578395	6947733	0.6	23.4	10.5	93	0.05	3.5	1.7	0.3	0.1	350	0.2	0.01
RUN145288	578253	6947520	0.4	21.2	7.5	56	0.05	5.5	2.1	0.3	0.1	208	0.2	0.03
RUN145289	578243	6947470	0.4	23.4	7.4	59	0.05	6.1	2.2	0.3	0.1	230	0.2	0.02
RUN145289	578243	6947470	0.4	21.3	7.6	55	0.05	6	1.8	0.3	0.1	229	0.1	0.03
RUN145292	578153	6947518	0.5	20.7	8.1	56	0.05	6.5	2.8	0.3	0.1	180	0.1	0.03
RUN145294	578197	6947188	0.6	29.5	6.4	63	0.05	5.7	3.3	0.4	0.1	231	0.2	0.03
RUN145297	578230	6947337	0.6	15.7	7.4	55	0.05	5.1	1.8	0.3	0.2	200	0.2	0.02
RUN145298	578235	6947388	0.5	22.7	6.1	60	0.05	5.3	3.2	0.3	0.1	246	0.2	0.03
RUN145357	568708	6946407	0.4	17.2	5.7	54	0.05	8	4.8	0.2	0.1	168	0.2	0.03
RUN145359	568696	6946507	0.4	20.8	6	54	0.05	7.4	19.7	0.3	0.1	162	0.2	0.03
RUN145360	568690	6946557	0.6	21	6	52	0.05	5.4	2.8	0.2	0.1	174	0.1	0.02
RUN145361	568687	6946607	0.5	20.1	6.3	48	0.05	6.4	2.8	0.3	0.1	178	0.1	0.03
RUN145362	568690	6946658	0.5	18.1	6.2	87	0.05	4.8	4.7	0.3	0.05	404	0.2	0.005
RUN145366	568699	6946806	0.5	14.3	8.8	70	0.05	3.9	0.9	0.2	0.1	339	0.05	0.01
RUN145380	577887	6945692	0.6	19.6	5.8	43	0.05	6.5	1.6	0.3	0.1	133	0.05	0.02
RUN145381	577938	6945694	0.4	30.6	6.5	51	0.05	5.4	5.7	0.3	0.1	131	0.05	0.02
RUN145381	577938	6945694	0.5	31.7	6.4	52	0.05	5.5	3.6	0.3	0.1	133	0.05	0.02
RUN145393	578520	6945832	1.1	27	6.9	79	0.05	8.3	0.9	0.5	0.1	115	0.05	0.03



SampleID	UTM Easting	UTM Northing	Mo	Cu	Pb	Zn	Ag	As	Au	Sb	Bi	Ba	W	Hg
RUN145395	578616	6945827	0.3	25.9	5.9	44	0.05	4.5	3	0.2	0.1	169	0.05	0.03
RUN145397	578711	6945858	0.9	18	5.9	50	0.05	4.9	1.9	0.4	0.05	73	0.05	0.02
RUN145399	578802	6945904	0.5	17.1	6.2	42	0.05	5.7	0.6	0.2	0.1	125	0.05	0.02
RUN145401	578903	6945924	1	17.1	6.7	53	0.05	8.3	2.3	0.5	0.1	94	0.05	0.02
RUN145402	578953	6945920	0.9	14.6	5.5	50	0.05	6.1	1.1	0.4	0.05	79	0.05	0.02
RUN145403	579002	6945936	0.8	25	6.1	55	0.1	4.8	1.8	0.4	0.1	146	0.05	0.03
RUN145404	579052	6945948	0.5	23.7	6.3	44	0.05	6.4	2.1	0.3	0.1	151	0.05	0.03
RUN145405	579102	6945938	0.5	18.9	6.6	45	0.05	8.5	1.5	0.3	0.1	138	0.05	0.02
RUN145406	579150	6945920	0.6	26.8	5.3	41	0.05	28.4	4.6	0.4	0.1	132	0.1	0.03
RUN145407	579201	6945924	0.4	23.6	5.3	43	0.05	18.3	3.2	0.3	0.05	123	0.05	0.03
RUN145408	579249	6945906	0.3	20.2	5.2	41	0.05	9.2	2.1	0.3	0.1	98	0.05	0.02
RUN145409	579300	6945904	0.2	33.9	5.4	53	0.05	4.3	2.6	0.4	0.1	149	0.05	0.04
RUN145410	579349	6945918	0.2	27.9	6.5	51	0.05	4.4	2.9	0.4	0.1	135	0.05	0.03
RUN145411	579398	6945928	0.2	27.9	5.6	42	0.05	5.6	2.7	0.4	0.1	141	0.05	0.03
RUN145412	579398	6945928	0.3	33.3	5.3	51	0.05	5.8	5.2	0.4	0.1	151	0.1	0.04
RUN145413	577789	6950163	0.9	14.7	11.7	82	0.05	7.4	0.25	0.4	0.1	224	0.05	0.02
RUN145414	577770	6950115	0.8	19.3	11.3	54	0.1	6	2.5	0.4	0.3	331	0.2	0.02
RUN145415	577738	6950077	0.9	23.7	79.2	63	0.5	7.5	6.8	0.5	0.5	298	0.9	0.02
RUN145417	577721	6949976	0.5	14.7	12.3	63	0.05	3.8	0.6	0.5	0.2	351	0.05	0.005
RUN145418	577701	6949927	0.6	16.2	10.3	62	0.05	7.2	0.25	0.4	0.1	256	0.05	0.005
RUN145419	577674	6949884	0.8	16.4	15.8	55	0.2	40.2	2.1	0.6	0.6	253	0.2	0.03
RUN145420	577642	6949843	2.1	22.6	31.3	61	1.1	15.7	0.7	0.5	3.7	193	0.3	0.09
RUN145421	577665	6949798	1.4	20.1	15	53	0.2	15.2	2.7	0.6	1.2	192	0.2	0.04
RUN145424	577666	6949653	1.6	16.9	20.7	62	0.2	11.4	1	0.5	0.6	196	0.3	0.01
RUN145426	577624	6949564	0.9	25.9	10	78	0.05	11.1	3.3	0.4	0.1	254	0.1	0.01
RUN145427	577610	6949517	0.8	15.8	8.7	114	0.05	7.8	0.9	0.4	0.1	523	0.2	0.01
RUN145428	577621	6949466	1.1	18.8	10.8	97	0.1	7.8	2	0.6	0.2	444	0.05	0.01
RUN145429	577638	6949419	0.4	11.4	21.6	82	0.05	3.5	0.25	0.3	0.3	213	0.05	0.01
RUN145434	577636	6949218	0.4	17	8.1	71	0.05	5.6	0.7	0.4	0.1	213	0.05	0.005
RUN145435	577644	6949169	0.7	20.1	7	81	0.05	6.7	1.7	0.4	0.1	275	0.1	0.02
RUN145438	577628	6949067	1.1	26	8.8	71	0.1	9.3	0.6	0.5	0.2	237	0.8	0.01
RUN145440	577595	6948969	0.8	12.8	8.3	72	0.05	6.3	1.1	0.4	0.1	289	0.05	0.01
RUN145441	577575	6948921	1.3	15.8	9.1	90	0.1	5.9	4.5	0.5	0.2	382	0.05	0.005
RUN145441	577575	6948921	1.3	15.4	8.9	90	0.05	5.9	2.2	0.4	0.1	377	0.05	0.005

SampleID	UTM Easting	UTM Northing	Mo	Cu	Pb	Zn	Ag	As	Au	Sb	Bi	Ba	W	Hg
RUN145444	577496	6948792	0.6	14.2	6.6	81	0.05	4.9	0.25	0.3	0.05	386	0.05	0.005
RUN145446	577441	6948710	0.6	28	7.3	71	0.1	8.2	0.9	0.4	0.2	303	0.1	0.02
RUN139623	573983	6948623	0.8	16.5	7.6	67	0.05	7.7	1.6	0.4	0.1	311	0.05	0.02
RUN139625	574020	6948524	0.4	9.6	8.7	103	0.05	5.7	1.3	0.3	0.3	530	0.1	0.005
RUN139629	574193	6948430	1.5	15.1	7.5	52	0.05	10.5	8.7	0.5	0.2	220	0.05	0.02
RUN139632	574308	6948316	1.7	18	9.2	58	0.05	8.9	2.4	0.5	0.2	239	0.1	0.02
RUN144528	571309	6947895	0.4	32.8	6.6	54	0.05	7.2	2.7	0.4	0.1	210	0.1	0.02
RUN144535	571621	6947747	0.6	30.3	6.1	49	0.05	7.1	2.3	0.3	0.1	159	0.05	0.02
RUN144536	571666	6947724	0.5	35.2	7.1	49	0.05	6.4	2.9	0.3	0.1	163	0.05	0.03
RUN144568	571706	6947694	0.5	32.3	15.9	88	0.05	6.3	2.2	0.4	0.1	235	0.05	0.01
RUN144569	571757	6947684	0.6	35.2	10.8	68	0.05	5.5	2.8	0.4	0.1	211	0.05	0.02
RUN144574	572007	6947675	0.9	20.4	9.4	72	0.05	9	2.8	0.4	0.2	208	0.05	0.005
RUN144575	572058	6947667	0.6	16.2	10.4	66	0.05	5.7	0.5	0.3	0.05	252	0.2	0.005
RUN144575	572058	6947667	0.5	15.2	10.4	67	0.05	5.8	0.25	0.3	0.05	246	0.1	0.005
RUN144576	572109	6947665	0.9	18.8	11.1	90	0.05	7.1	0.25	0.4	0.1	255	0.3	0.005
RUN144794	575358	6950104	0.7	21	8.5	60	0.05	8.7	1.4	0.4	0.1	266	0.1	0.01
RUN144796	575427	6950054	0.7	21.9	14.2	92	0.05	6.6	1	0.3	0.6	220	0.05	0.01
RUN144797	575476	6950051	0.7	37.7	156.3	70	0.1	10.7	4.5	1.9	1.7	154	1.1	0.03
RUN144804	575597	6949751	0.9	24.2	8	89	0.05	8.2	2.8	0.4	0.2	416	0.5	0.02
RUN145270	578698	6948333	0.6	18.7	7.3	60	0.05	5.2	2.1	0.3	0.1	374	0.1	0.02
RUN145271	578688	6948282	0.8	20	8.5	63	0.05	5.4	1.8	0.3	0.1	340	0.05	0.02
RUN145272	578667	6948233	1.4	43.6	8.9	53	0.3	6.8	3.6	0.4	0.2	395	0.1	0.03
RUN145274	578636	6948136	0.6	23.5	7.6	64	0.05	6.4	2.1	0.4	0.1	307	0.1	0.02