

TARGET EVALUATION  
REPORT OF 2011 FIELD ACTIVITIES  
FUNDED UNDER YMIP GRANT 11-026

PREPARED FOR  
CHARLIE BROWN  
PO BOX 1170  
MARSH LAKE YUKON  
Y0B 1Y1

BY  
CHARLIE BROWN PROSPECTOR  
JANUARY 2012

PAGE 1

TABLE OF CONTENTS

	PAGE
INTRODUCTION	2
PROJECT SUMMARY	2
AREA LOCATION AND ACCESS	2
PREVIOUS WORK AND EXPLORATION	3
REGIONAL AND GENERAL GEOLOGY	3
DESCRIPTION AND SUMMARY OF WORK	3
• PLACER MINING TEST RESULTS	4,5
CONCLUSIONS AND RECOMONDATIONS	6
PROSPECTING ACTIVITIES FIELD NOTES	7,8,9,10,11,12
1:50,000 NTS map, Claim map,Air Photo, Prospect area map, Sample location map	(side pocket folder)
Prospect pictures	(side pocket folder)

## INTRODUCTION

This report prepared by Charlie Brown funded under Target Evaluation Grant 11-026 of the Yukon Mineral Incentive Program. (YMIP). A detailed summary of field activities and copies of field notes are included for prospecting work done on the Inca claims at the confluence of Bear Creek/Klondike River. Placer Map 116B3b.

## PROJECT SUMMARY

Placer mining dates back to 1904 in this area, when the first electric dredge was assembled at the mouth of Bear Creek. The discovery of Joe Boyle's old steamer and steam points/hoses on the left/limit, made us come to a conclusion, that this area is thawed. It made this project possible to prospect thawed ground on the left limit Incas 3 and 4 between Bear Creek and Quigley Gulch. An excavator was used to dig thawed material 2ft. into bedrock. The gravels above bedrock and the bedrock were sampled by hand using a mini derocker. 20 liter pails filled with gravel and bedrock, were put through the mini derocker and the concentrates were panned out, finding different pay areas and levels to do volume sluicing. Volume sluicing was done hauling the pay material out of the pit with a 40ton truck, to a test sluice plant.

## PROJECT LOCATION

Dawson Mining Area  
Map Sheet 116B03b  
Latitude 0585143  
Longitude 7101144

## CLAIMS WORK WAS DONE ON

INCA #3 P37337  
INCA #4 P37338  
Owned 100% by Charlie Brown

## AREA LOCATION AND ACCESS

Incas Klondike is approximately 14 km from Dawson City, Yukon. there is a all weather road leaving Dawson City Town site, you travel east on the Klondike Highway. Going 12 kms you turn right onto the Bear Creek Subdivision Rd. Driving through the subdivision @ 30 km/hr for 1 1/2 kms you come to Bear creek and Klondike River confluence. Going up Bear Creek for 100ft. you make a sharp right hand turn. Going down a hill you keep right. You will cross bear Creek at the bottom of the hill. Once across Bear Creek you follow this trail and it will take you to the Incas 3&4 placer claims, prospect work site.

## PREVIOUS WORK AND EXPLORATION ACTIVITY

Previous work done on the Incas dates back to 1905. 4 churn drills were drilling prospect holes proving up placer reserves for Dredge #1 in this area. This was the first electric dredge Canadian #1 in the Klondike Valley and the Klondike. She mined gold at the mouth of Bear Creek and Klondike River. In 1910 Dredge #2 was constructed and floated between Deadman and Quigley Gulch about 1 mile downstream from Bear Creek, she dredged along the left/limit between Bear Creek and Quigley Gulch.

Joe Boyles huge steamer sitting on Incas1. Steam hoses and steam points have been found on Incas3 steaming has taken place in this area.

In Oct.2009 On Incas1 shaft was dug 4' x 3' x 21ft deep and hit thawed ground. The shaft was abandoned. Also in 2009 Nov. two auger holes were drilled one was 14ft deep and the other was 11ft deep, on Inca 3. The auger drill hit larger cobbles of Klondike wash and couldn't drill any deeper. These prospect auger holes never hit frost. Having this prospect info in this area on the Incas 2, 3, and 4 show's the ground has been thawed for dredging.

## REGIONAL AND GENERAL GEOLOGY

The Klondike District lies within the unglaciated portion of the Northern Cordillera. Bedrock in the exposed areas consists mainly of carbonaceous phyllite and quartzite with pale green to rusty brown weathering muscovite-carbonate schist. Bedrock in this area is altered fuschite-bearing ultramafic rocks. These rocks are bright green fresh and weathered color, characteristic of chrome mica. (fuschite/mariposite) mixed with siderite quartz and graphitic schist.

## DISCRIPTION AND SUMMARY OF WORK

Work started in July 16th. ended Oct. 7th 2011. A 200 excavator started grubbing pit #1. This pit was grubbed stripping trees 150ft x 150ft. Once grubbing was done, a test hole was dug south 75 ft from the old dredge tailings. Gravel was exposed at surface and water table was at 4 ft. PHOTO 1. When the water table was discovered waste material had to be dug out of the sump and hauled away. A six inch diesel suction pump was set up to de-water and develop a dry pit. PHOTO 3&4. A 40 ton truck was used to haul out grubbing material and waste gravel loading out with the 200 exc. PHOTO 2. This was the key to the operation, to get the material removed out of the pit. This made it possible to dig material out of the sump loading it onto the truck and tramping it out of the pit and stock piling the waste material onto a dump on the old tailings piles Inca 3. Eventually the suction hose was lowered down to 15ft. keeping the pit dry. This made excavating much simpler than digging material out just using the excavator and moving waste material 3 or 4 times. At 18 ft bedrock was exposed and a bedrock drain for the test pit was started.

When bedrock was exposed. Bedrock and contact gravel material was gathered into 20 liter pails and put through a mini derocker. the concentrates from the mini rocker were panned out. After sampling was done and fine gold was found in the top gravels. The gold bearing gravels and bedrock were loaded out of the prospect pit and stock piled for sluicing on claim Inca 3.

A 121-3 Kubota was used, digging out contacts of tear drop concentrations of gravel for hand sluicing. 1 Ton dodge 4x4 Dodge truck was used for fueling and servicing the needs of the prospect. Arctic cat 4 wheeler ATV was used for odd jobs on site.



## PLACER MINING RESULTS

August 7th Charlie took 2 pans of bedrock graphite quartz green phyllite schist from bedrock drain. no colors no black sand. PHOTO 5. Sampled 2- 20 liter pails in same area put these pails through the mini sluice. No gold and no black sand.

August 11th Jeff Bond and Derek Torgerson came out for a field trip, along with John Brown and Maxwell. We got the first gold colors from panning the the orange gravel contact with the black graphite quartz. We got colors in the pan. The best pan was 5 colors. Putting orange gravels through the mini rocker, fine to coarse Gold was recovered.

August 13th Gay and I sampled tear drop gravel layer in Klondike wash. This was where Jeff Bond mentioned to test. Sampled 2 - 20 liter pail put through mini rocker. Panned out got some fine gold and fine black sand. sampled 1 more 20 liter pails. Put through mini rocker. panned out. Recovered fine black sand and no gold.

August 14th Gay and I took 2 pans each from the orange gravels. Got colors in 2 pans out of the 4 pans.

August 15th Gay sampled 6-20 liter pails from pump sump.

2 pails of green phyllite schist no gold and no black sand

2 pails orange gravels with graphite bedrock. Panned 6 color pan with black sand.

2 pails orange gravels with graphite bedrock. Panned 3 color pan with black sand

August 16th Gay sampled east end of pit where I, Charlie dug out some fractured green muscovite schist. This pan came up with 15-20 coarse pieces of gold and a small amount of black sand PHOTO 6. 2- 20 liter pails of this material were put through the mini derocker panned out and no gold. Gay went over to the west side of the pit (pump side) and took 4 - 20 liter pails of orange gravels mixed with graphite, sluiced them through the mini rocker. Recovered 10 coarser colors on bedrock contact.

August 17th Gay panned different contacts in pit #2. No luck panning any gold. Sampling 2- 20 liter pails in orange gravels putting gravel through mini derocker 5 color medium fine gold and fine black sand was recovered. Sampling phyllite schist putting 1 - 20 liter pail through mini derocker no gold or black sand was recovered.

August 18th Gay sampled tear drop layer of coarse top gravels 5ft off of bedrock (where Jeff Bond mentioned should be panned). Center of pit #1. Took 4 pans and got gold in two of them along with black sand.

August 19th Gay sampled 4 - 20-liter pails of coarse tear drop top gravels 8ft above bedrock. The were put through the mini rocker and the concentrates panned. 10 plus very fine gold colors were recovered along with fine black sand.

August 22nd. Gay sampled more bedrock contact material from bedrock. 2 -20 liter pails Orange gravels mixed with graphite schist in pit #1 south of where pump is set up panning concentrates got a couple colors gold black sand. Sampling the green phyllite schist 2-20 liter pails. No gold and no black sand was recovered.

August 24th Gay sampled top gravels in pit #2 took 2 pans no colors but fine black sand. Taking 4-20liter pails of coarser gravel about 3ft deep from surface. Putting this material through mini derocker and panning out concentrates. A couple colors and very fine black sand was recovered.

These are the prospect samples done by hand with a shovel, mini derocker and gold pan.

The best pan was 15-20 coarse colors found in broken bedrock fractured green chlorite schist

Orange gravels on top of graphite schist bedrock is where we had the most luck in panning the most amount of gold colors. The top gravels 5ft - 8ft above bedrock tier drop concentration ( where Jeff Bond said to test) These areas tested very fine gold with fine black sand.

Sept 8th Volume test sluice was started. Box was feed with a 200 exc. Loading top gravels 8ft off bedrock. 10 hrs sluicing time 1000 yds were put through the box. 2 1/2 ounces were recovered in the top runs. 60% (1 1/2 ounces was recovered in the bottom runs. Total 4 ounces first test. PHOTO 7

Sept. 9th Sunday keep sump pump running.

Sept. 10 Sluice plant sluiced 10hrs 200 exc. feeding bedrock and top gravels through plant.

Sept 11th sluice plant sluiced another 10 hrs total 20 hours sluicing took place 2000 yds of bedrock and top gravel material off of bedrock. Top mats were cleaned and panned out. 5 1/4 ounces recovered in the top runs. 60% more in the Bottom runs. Recovering a total of 8.4 ounces a couple small nuggets were recovered. (PHOTO #8.)

#### EXCAVATED YDS FROM TEST PIT #1

724 truck loads were loaded out of Pit #1- 18 yds per load = 13032 loose yards.

Sluicing material 120 loads hauled to sluice plant x 18 yds load = 2160 yds

Wast metal 10 loads hauled to Rockie claims and Inca 1

#### SLUICING RESULTS

Pit #1 Clean up #1 Sept 24th 2011 243 hrs sluicing recovered 204.61 ounces (66% gold) and 6% melt loss. From approximate 24300 yds sluiced through the box.

Pit #2 Clean up #2 Oct. 07th 2011 203 hrs sluicing recovered 160.67 ounces (66% gold) and 6% melt loss. From approximate 20300 yds through the box.

The Pit size ended up to be 300ft x 300ft average depth 20ft deep. Up to 8ft of top gravels off of bedrock were taken. This was because gold was recovered in these tear drop coarse gravel fans from panning. Comparing this prospect to other placer mines in the Klondike valley only 4 ft of top gravels off of bedrock are being sluiced.



## CONCLUSIONS AND RECOMONDATIONS

In prospecting the left/limit of the Incas, discovering that it was thawed, made this prospect a success. Prospecting was successfull with a 200 exc. (20 ton) instead of the (30 ton ) that was in my original proposal. If a person drilled the Incas, I know the values would not have shown up from drilling and this property would have been abandoned. Drilling and Geophysics 2D Resistivity, would help in planning out the mine plan. To locate where your sump and and drains should be located before you start removing any material.

We used a 40 ton truck, loading it with the 200 exc. PHOTO 2 We hauled material out of the pit. Running a 6" sump pump makes for having a dry pit, making hand sampling possible. By doing this you get a good visual of all the different contacts of gravel and bedrock in the pit.

We learned, trying to dig in this water table, using the first plan using just the excavator. would not have worked. Without using the 40 ton truck we could not have dug 18' to bedrock. We would not have exposed any amount of bedrock square footage to do a proper test on bedrock.

8ft of top gravels off of bedrock were sluiced. This is one reason that less than 1 ounce of gold per hour was recovered in the volume sluicing. Henry Gulch sluiced 8ft of top gravels. Chasing the fine gold in the tear drop alluvial gravels fans. Sluicing only 4ft of gravel of of bedrock would up your ounces per hour. This might happen in 2012.

Once coarse gold was found on bedrock On Sept.11. PHOTO 8. On Sept.12 Henery Gulch brought in more equipment. Another 40 ton truck, 270 excavator., 400 excavator. D9 cat, 988 size loader, They expanded the pits making the two pits that were 150ft x 150ft ended up being 300ft x 300ft. They keep a boarder between the two pits to keep Pit #1 and Pit #2 seperate. Claen up 1 was Pi 1. Clean up 2 was Pit#2. The left limit on the Incas has 500,000 square of thawed material left to strip and mine. 90,000 square ft. was done fall of 2011.

Thanks to YMIP making this prospect a success.Thanks to Henry Gulch Placers having the experiance and knowledge to help out when things got difficult. Henery Gulch says they will be back in 2012.

## FIELD ACTIVITIES INCAS KLONDIKE SUMMER 2011

July 15th: Can now drive to Incas. I flagged out a area 150ft x 150ft grubbing. I chose an area in the tailings pile with what I thought could be promising prospect.

July 16th: Saturday: Walked 200 exc. to the Incas 3. Started grubbing trees with 200 exc. (10hrs)

July 17th: grubbing with 200 exc. on Incas 3 for test pit. Finding old steel plates, cable, dredge bucket lips. (8hrs)

July 18th: grubbing with 200 exc. on Incas 3 for test pit. (10hrs)

July 19th: Jim Leary and Loraine, mining inspectors for Dawson came out to check things out. The mentioned to me that Mellisa will be our mining inspector. I stock piled more trees and stumps. (8hrs)

July 20th: I'm digging a test hole and hitting water at 4 ft. no gravel but digging up slickings with the 200 exc. Grubbing trees. I needed a new plan to make this prospect work. I realized that I'm in slickings. I back filled this pit I need more than a excavator to make this work. Get a truck and load the material out of the pit. Instead of moving it three times and getting disheartened. I went to John Alton and he was mentioning the same idea.

July 21st: Started leveling pad on the old tailings Inca 3 for truck to dump strippings and grubblings. Area where bedrock tailings are exposed. this area I know has been mined and is a great area to stock pile waste material. Made a ramp to the pit for truck to use as haul road. (10 hrs).

July 22nd: Finished leveling pad for waste material to dump on with truck. Truck is on site with driver. Loaded truck with trees and stumps. Truck driver and truck makes this 100% more productive. 30 loads. (9hrs)

July 23rd. Loaded out 25 loads of grubbing, and 5 loads of steel. With 200 exc. and 35ton truck. Hot day. (10rs exc. 9 hrs truck)

July 24th: Sunday: operated 200 exc. fixed punched out road from Saturday. Gathered up more steel into piles to haul out. (6hrs exc.)

July 25th: Loaded out 3 loads of pulleys, flat steel, to the Rocky Claim. Loaded 30 truck loads with Dredge slickings. Preparing for sump hole and building a flat aea for discharge hose to lay on. 30 loads. (10 hrs exc. and truck)

July 26th: Started digging drain on east side of pit. Pulled 35 loads with truck. Digging out blue clay or slickings. Will deal with this later. 6" pump has been delivered on site. Used excavator to build safety berms on old trails at each end of prospect to keep people from entering work site.



July 27th: Used excavator finished digging hole and pad for 6" pump. Finished sloping for discharge hose to sit on. Hauled 25 truck loads. (10hrs truck and exc.)

July 28th: Set 6" pump with excavator. Hooked up suction and discharge hose. Started 6" pump pulling water, will have to reset tomorrow. Used 200 exc. to make a new trail for truck to haul waste out of. (10hrs)

July 29th: Pulled 15 loads gravel. Reset suction on pump. At 8' took a couple pans out of some interesting gravels out of the sump. No gold, some black sand. (8hrs)

July 30th: 6" pump is settling might be too close to dredge limits, will keep an eye on it. Dad came out with 4 wheeler. He did some panning but never found any colors. Pulled 30 loads with 200 exc. and rock truck. (10hr day)

July 31 Sunday: Leveled piles for truck to dump more material onto. Stopped pump let air out of hose. reset suction hose with 200 exc. Pump is keeping up to water table at 900 RPM (8hrs)

Aug 1st: Pump is keeping pit water level down in sump at 900 RPM. Loaded out 35 loads with 200 exc. and truck. (10 hrs)

Aug. 2nd: Set sump pump suction down 4' more. down 12 ft. no sign of bedrock. Stock piled some gravels from 12 ft. in sump hole, panned out no color very fine black sand. Pulled 32 loads with exc. 200 and rock truck. 32 loads. (10hrs)

Aug. 3rd: Water starting to rise in sump drain. Set pump at 1000 RPM to regulate water table. Starting to dig slabby chlorite muscovite schist in the gravels while digging down the drain with exc. 200. Loaded out 40 loads of waste gravel. stock piled a bucket load of phyllite schist, panned two pans no gold no black sand, it's a mystery. (10hrs)

Aug. 4th: Melissa mining inspector came out today. She did an inspection, she got me to dig into the tailings pile to establish a hole for the water from the sump to settle into before it went into dried up tailings pond. Once this was done everything was good. Melissa mentioned that Nathalie Lowry with fisheries and oceans would be coming to do some work around Aug. 24, 2011. Exposed some more green phyllite bedrock from about 11ft. Panned some black sand and pyrite cubes. No gold. Hauled 37 loads with 200 exc. and truck. (10hrs)

Aug. 5th: Digging into black muck under the gravel. looks like old timers have mined here. Dug around sump hose and dropped it down it 15'. Stock piled more gravels with some colluvial bedrock. Hauled 39 loads. (10) hrs. Will do panning later.

Aug. 6th: Digging into green chlorite Schist and broken angular graphite schist bedrock at 18ft. Stock piled some of this material for putting through mini derocker box. hauled 35 loads with 200 exc. and truck. (10hrs)

Aug. 7th; Sunday. Sump pump is keeping pit drain and sump water table low. Studying the pit drain the angular graphite quartz is dipping lower than the green chlorite phyllite schist towards the west where the sump pump is located. We are down 17'-18' in the drain. I loaded up 2 20 liter pails and put the material through the rocker box. Panned out the mats, still no gold and no black sand. took 2 more 20 liter pails in the black graphitic quartz schist. Found no gold and some match head size pyrite cubes. Where is the gold?

Aug.8th Following down swing in the black graphitic bedrock. I took exc. 200 and dug bedrock near sump pump. Getting into a orange colored gravel bedrock with green fuchite looks interesting. stock piled this material for future testing. Hauled out 20 loads of waste gravel with 200 exc. and truck. (10 hrs)

Aug.9th Sump pump is keeping up. Stripping slickings off gravel following the gravel contact into the old dredged mining area. being very carefull not the let any water into pit from Klondike water table. Slickings are coming out dry. (thanks to the sump pump) hauled 37 loads of dry slickings with 200 exc. and truck. (10hrs)

Aug10th: Went and checked sump pump at 6:45. 8am went to Dawson Rocks. Saw Jeff Bond, he mentioned he was going to come out to the Incas on the 11th. Had lunch with Kevin Brewer. Left Dawson Rocks at 2pm. Went checked sump pump. Did some digging with 200 exc. in the sump to expose some material to pan for The 11th when Jeff and Derek show up. (4hrs)

Aug.11th: Picked up Dad and Maxwill to help out prospecting the exposed gravel at the Incas. 9:30 am we escorted Jeff and Derek out to the Incas. Jeff had a sore foot but that never slowed him down for sampling. I filled 200 exc. bucket full of water for a panning tub. Dad helped everyone pan. Jeff explained about the top coarse gravels with the tear drop shapes pointing to the south high wall, that this is a good indicator that the gravels are still going to show up getting closer to the high wall. We took a number of pans. Nothing jumped out at us. We did find some colors in the orange gravels. We glassed the colors that were found and can see some of them are crystal and have not traveled very far. Jeff gave me two nice air photos of this area. I took the 200 exc. and dug into the sump where bedrock gouge was found. I filled the bucket up with gouge ( green white fine fractured white quartz, mixed with some graphite) we panned the bedrock contact gouge. we never found any color in this bucket load. Jeff took a couple samples to get assayed. Jeff mentioned we should sample the top gravels where there is bigger rock and some binder looking material that could hold gold.

Aug.12th: Cool sunny morning fall is in the air. Went and checked on sump pump. Gay arrived in Dawson. spent time with her.

Aug. 13th I walked Kubota 121-3 to the Incas. I dug into the to tear drop gravels filling up 20 liter pail. Gay put gravel through the mini rocker box. Finding black sand and fine gold. Dug around filled two more 20 liter pails. Gay found no colors. Hauled 5 loads of waste gravel with truck loading it with 200 exc. I ran both. Checked pump fueled it up. (8hrs)

Aug: 14th Sunday quite day. went and checked pump at Incas. Thinking about volume testing. Did some test panning in the orange gravel from the sump pump hole. Got a couple colors in 2 of the 4 pans with fine black sand

Aug. 15th: Gay and I went to the Incas she shoveld 6- 20 liter pails of gravels on bedrock contacts ran gravels through mini slice box. 2 pails green phylite bedrock ( no gold or black sand) and 4 pails of graphite and orange gravels. got interesting colors and black sand. I ran 200 exc. expanded drain on the east side of the pit. Dug up some fractured muscovite chlorite schist. at 17ft. Rained off and off all day. Hauled out 5 loads with truck, I ran truck and exc. waiting for sump to drop. Suction pump is set at 1600 rpm. Ran like this for 2 hrs pumping out excess water in drain. When sump was down to normal I reset the pump to 1000rpm. (10hrs)



Aug. 16th: used kubota scratching around for Gay to sample. The water in sump came up. I throttled the sump pump up to 1600 rpm. Gay got some good pans today putting 4 pails of orange gravel through the mini rocker. Starting to find coarser gold. John Alton and Sylvia came out and did some panning with Gay, we got a nice pan 15-20 coarse colors of gold with black sand came from the fractured green muscovite schist from east end down stream of sump from yesterdays dig. A good indicator. Jhon Alton came out and we discussed a plan. Deciding we are going to do volume test everything has to be sluiced top gravels and 2ft bedrock. I used 200 exc. to start stripping upstream towards Bear creek. Used 200 exc. and rock truck. pulled 25 loads. Leveled dump pad. (10 hrs) Pit #1 is ready to do volume test. (10hrs)

Aug. 17th Sorted more junk pipes with 200 exc. Hauled 2 loads old pipes to Knowtown5 to sort out later. Pulled 35 loads gravel. Gay did some more panning. Found colors in the orange gravels pit #1. Got word that Milesa and Nathalie ( Mining inspector and fisheries) will be coming out to see where test sluice can be set up. I have a pit 2000ft away designated in my water licence. I want to set it up closer to the prospect hole keeping the shortest haul possible to save on wear and tear on equipment and fuel. (10hrs)

Aug. 18th stripped and loaded out some more steel. Hauled 3 loads to the rocky claims to sort out at a later date. Pulled 32 loads of gravel with 200 exc. and rock truck. Finding lots of steel pipes, and bucket lips in area #2. Pump is running good keeping up to water table. I showed Gay the top gravels that Jeff Bond said should be tested. Gay took a couple pans and found very fine colors and black sand from gravels about 8ft above bedrock in pit #1. (10hrs)

Aug.19th Milisa mining recorder came out to the Incas. I explained what was needed explaining this was just a test and the shortest haul possible would be needed. I showed her where I want to set the test plant. She said Nathalie was coming on the 23rd and she could make that call. Stripped some top gravels with 200 exc. and rock truck from pit #2 hauled 27 loads. Gay took 4 pails of gravel from the top gravels and put them through the mini sluice. She got some fine black sand and fine gold in pit #1. (10hrs)

Aug.20th Heavy rain all day. Stripped and hauled 18 loads from test pit #2 with 200 exc. rock truck. Stock piled steel and junk to haul out later. Road is pounding out for truck to haul on. Hauled 5 loads of coarse material into pit#2. Leveled out ruts spread over size material onto road. To wet to sample. (10hrs)

Aug.21st: Sunday Pump is working good. Hauled 2 loads of steel of stock piled steel. Took to Rocky3 claim to sort out later. Used 200 exc. and rock truck. (3hrs.)

Aug.22nd: Hauled 25 loads of waste gravels from pit#2. using 200exc. and rock truck. Gay did some more sampling panning different areas on pit #1. She is getting gold colors in the fresh orange gravels and graphite schist south of where sump pump is set, sampling green phyllite schist bedrock. Had to set pump rpm up because sump drain is full of water. Drained off the water. Set pump back to 1000 rpm. (10hrs)

Aug.23rd Milisa and Nathalie came out at 9am. Gave me the OK to set up sluice plant discharging into old settling pond with no water beside where I have been hauling waste gravels. This is good news. Can start setting up test plant. Loaded out 25 loads of waste gravel from pit #2. (10hrs)



Aug. 24th: Dug out some interesting gravels with 200 exc. Gay sampled with pan no gold colors fine black sand. Than filled up 4- 20 liter pails of top gravels in pit #2. Getting fine gold and black sand. Pulled 30 loads with 200exc. and rock truck from pit #2 started leveling where sluice plant is going. (10hrs). No water in pit.

Aug. 25th- 28th keeping sump pump going.

Aug. 29th Hauled 37 loads stripping waste gravel out of pit #2. Used 200 exc. and rock truck. Dumping gravel for pad for sluice plant to sit. (10hrs)

Aug.30th: Leveled piles on dump. Hauled 32 loads of waste gravel hauled to sluice area for test plant to sit on. Test sluice plant and pump on site.

Aug. 31st: Henery Gulch Placers setting up test sluice plant. Loading out top pay gravels to test plant site 20 loads.

Sept. 1st: Henery Gulch Placers setting up test sluice plant. Loading out pay gravels and bedrock to test plant site 30 loads.

Sept. 2nd: went to dig hole in tailings for water suction to pull water for sluice plant. Hit frozen ground. Went to see Randy at mining inspections got letter from him saying can pull from the dredge pond behind sluice plant. This was good news.

Sept. 3rd: Built trail with 200 exc. down to dredge pond, made pad for pump to sit on, to do feed for test sluice plant. (10hrs)

Sept. 4th: Sunday checked on sump pump in pit#1.

Sept. 5th: setting up 6" pump in dredge pond, put screen over suction with 200exc. Henery Gulch set up sluice pump. (10hrs)

Sept. 6th: Hauled 35 loads of pay gravels to test plant stock piled for volume sluicing.

Sept. 7th: Hauled 35 loads of pay gravels to test plant. Test plant is ready to go.

#### BULK TESTING SLUICING

Sept. 8th Started feeding test plant with top gravels. Feeding plant with 200exc. Sluiced 10 hrs. 100 yds hr cleaned top runs.

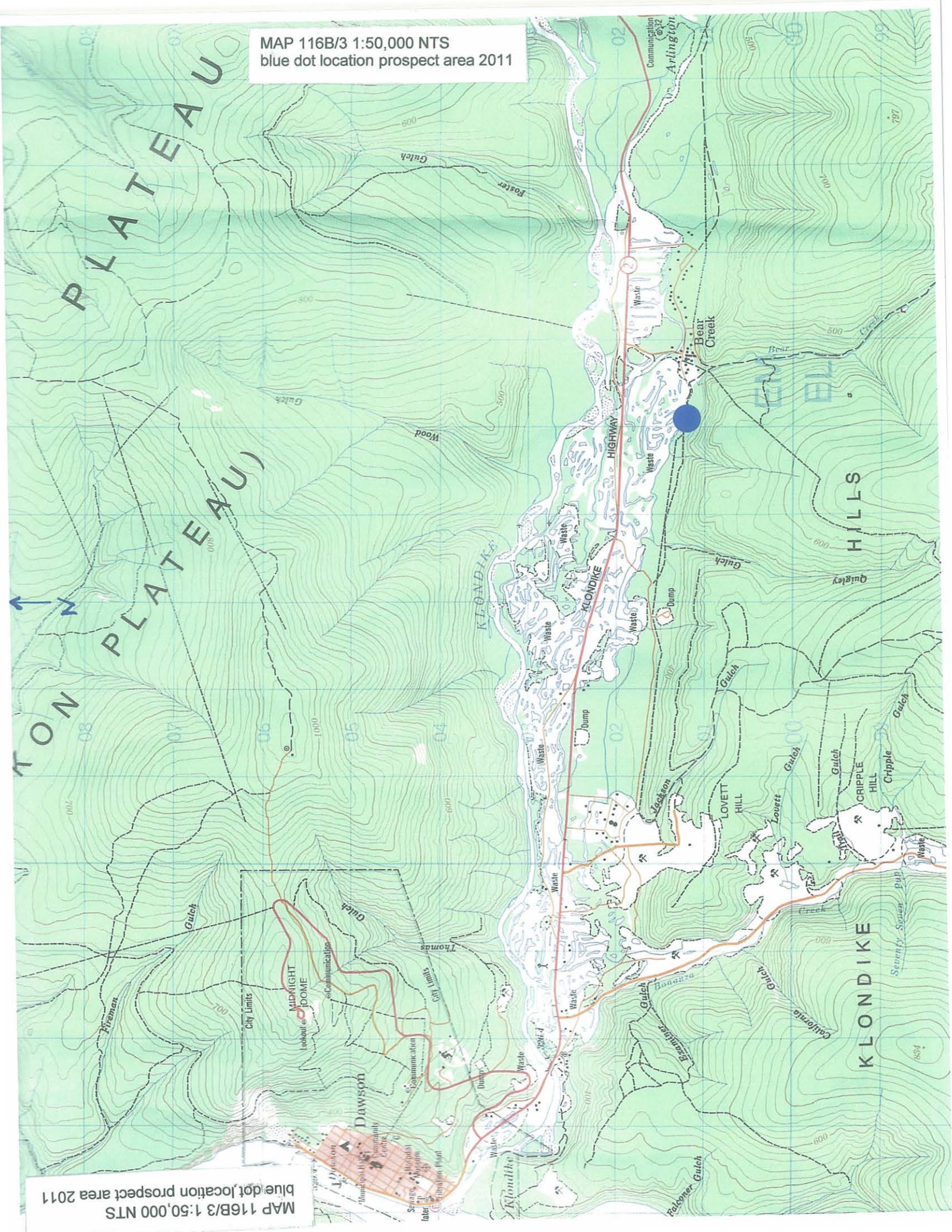
Sept 9th keep sump pump running

Sept10 used 200 exc. to feed test plant for 10 hrs. 100 yards a hr. put through 1000 yards.

Sept. 11th sluiced 10hrs some top gravels and some bedrock. Nightshift sluiced 10 hrs. Total 20 hours sluicing 100 yds hr. Top runs were cleaned up.



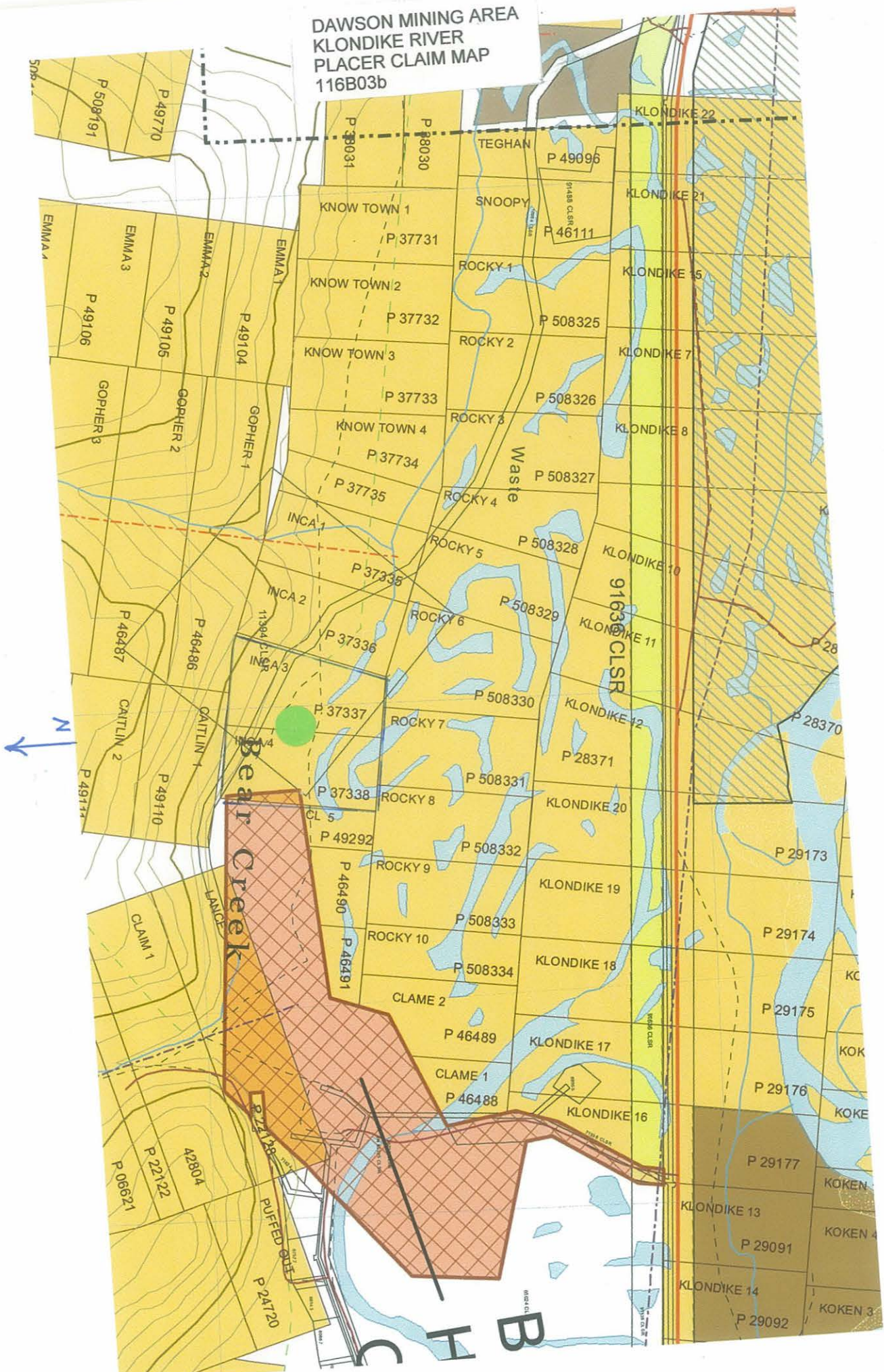
MAP 116B/3 1:50,000 NTS  
blue dot location prospect area 2011



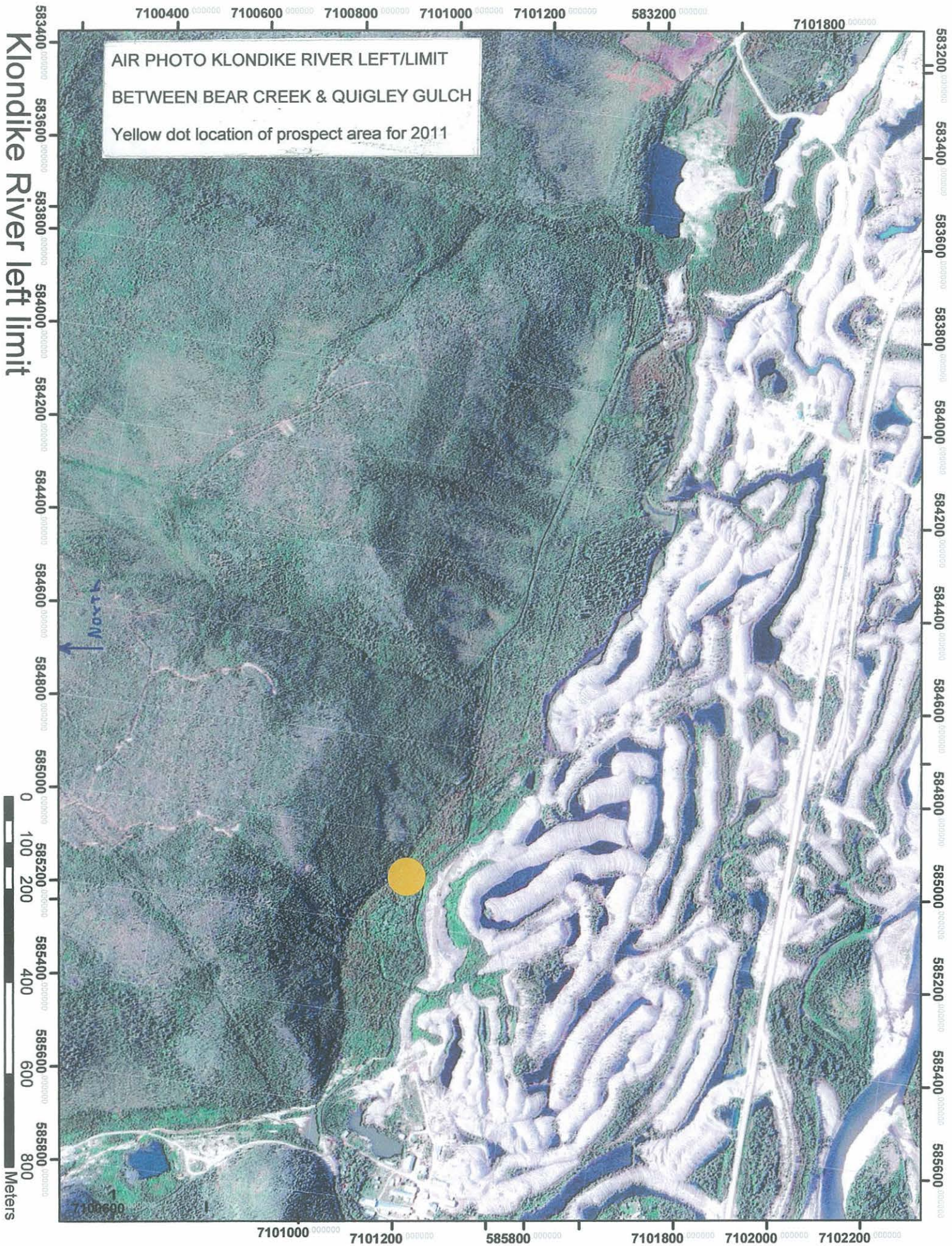
MAP 116B/3 1:50,000 NTS  
blue dot location prospect area 2011



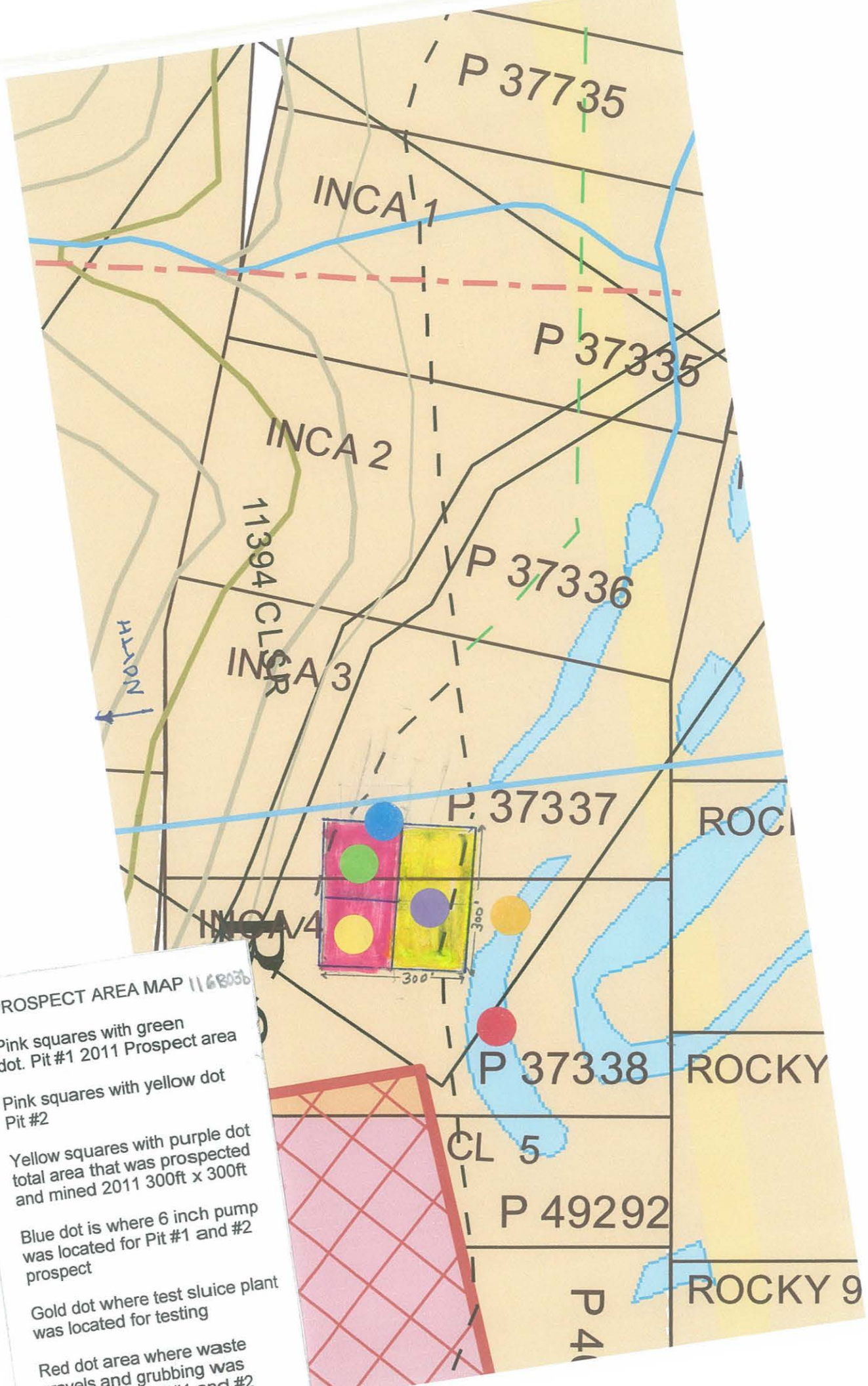
DAWSON MINING AREA  
KLONDIKE RIVER  
PLACER CLAIM MAP  
116B03b











PROSPECT AREA MAP 1168036

- Pink squares with green dot. Pit #1 2011 Prospect area
- Pink squares with yellow dot Pit #2
- Yellow squares with purple dot total area that was prospected and mined 2011 300ft x 300ft
- Blue dot is where 6 inch pump was located for Pit #1 and #2 prospect
- Gold dot where test sluice plant was located for testing
- Red dot area where waste travels and grubbing was done for Pit #1 and #2

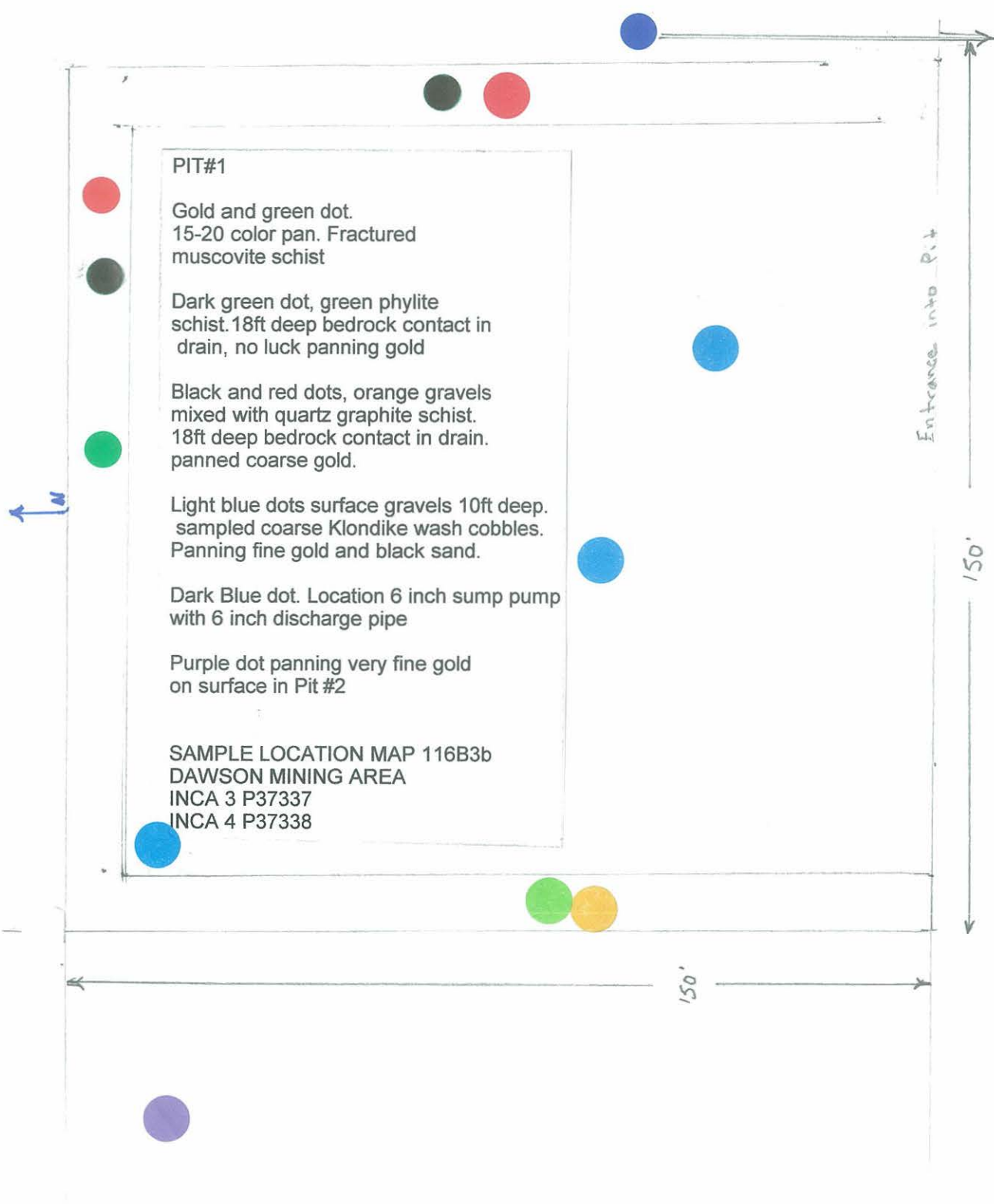






PHOTO 1  
1ST INCOUNTER WITH WATER TABLE PIT #1

PHOTO 1  
Showing how shallow water table is in Pit #1.  
Excavator digging by it self would have not been able to  
get a proper bedrock sample.





PHOTO 2  
LOADING 40 TON TRUCK, 6 INCH SUMP PUMP AND PIPELINE ON R/SIDE  
NOTICE DRAIN START OF DRAIN BEING BUILT PIT#1





PHOTO 3  
DRAIN FULL OF WATER PIT#1





PHOTO 4  
DRAIN BEING PUMPED OUT WITH 6 INCH PUMP PIT#1





PHOTO 5  
GREEN PHYLITE SCHIST BEDROCK AT 18FT NORTH END PIT#1





**PHOTO 6**

Pan taken from coarse fractured green muscovite schist bedrock at 18ft. Shows location on map on page 12 where green and yellow dots are located in drain.





PHOTO 7  
FIRST CLEAN UP 10 HRS TOP GRAVELS PIT#1





PHOTO 8  
SECOND CLEAN UP 20 HRS BEDROCK AND TOP GRAVELS PIT#1



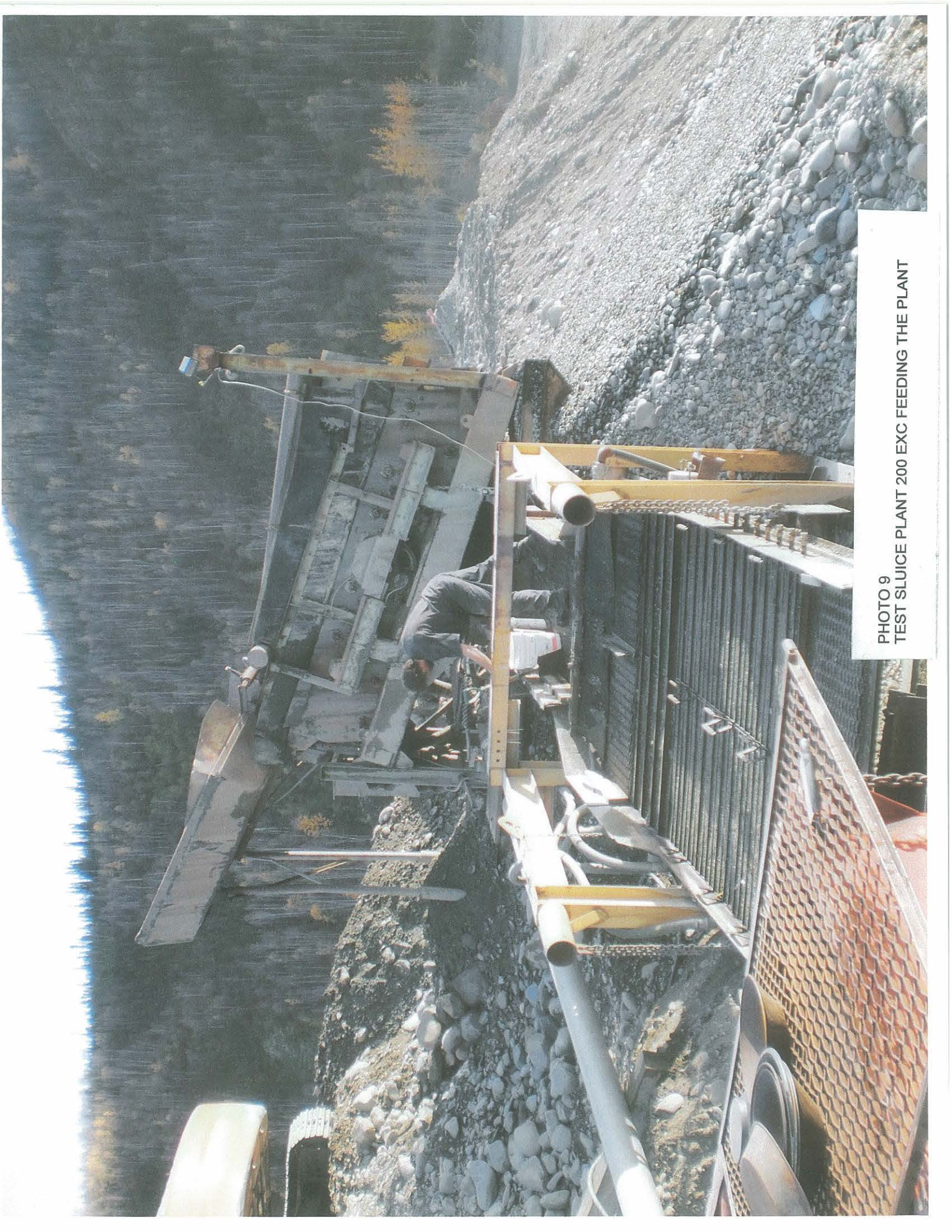


PHOTO 9  
TEST SLUICE PLANT 200 EXC FEEDING THE PLANT