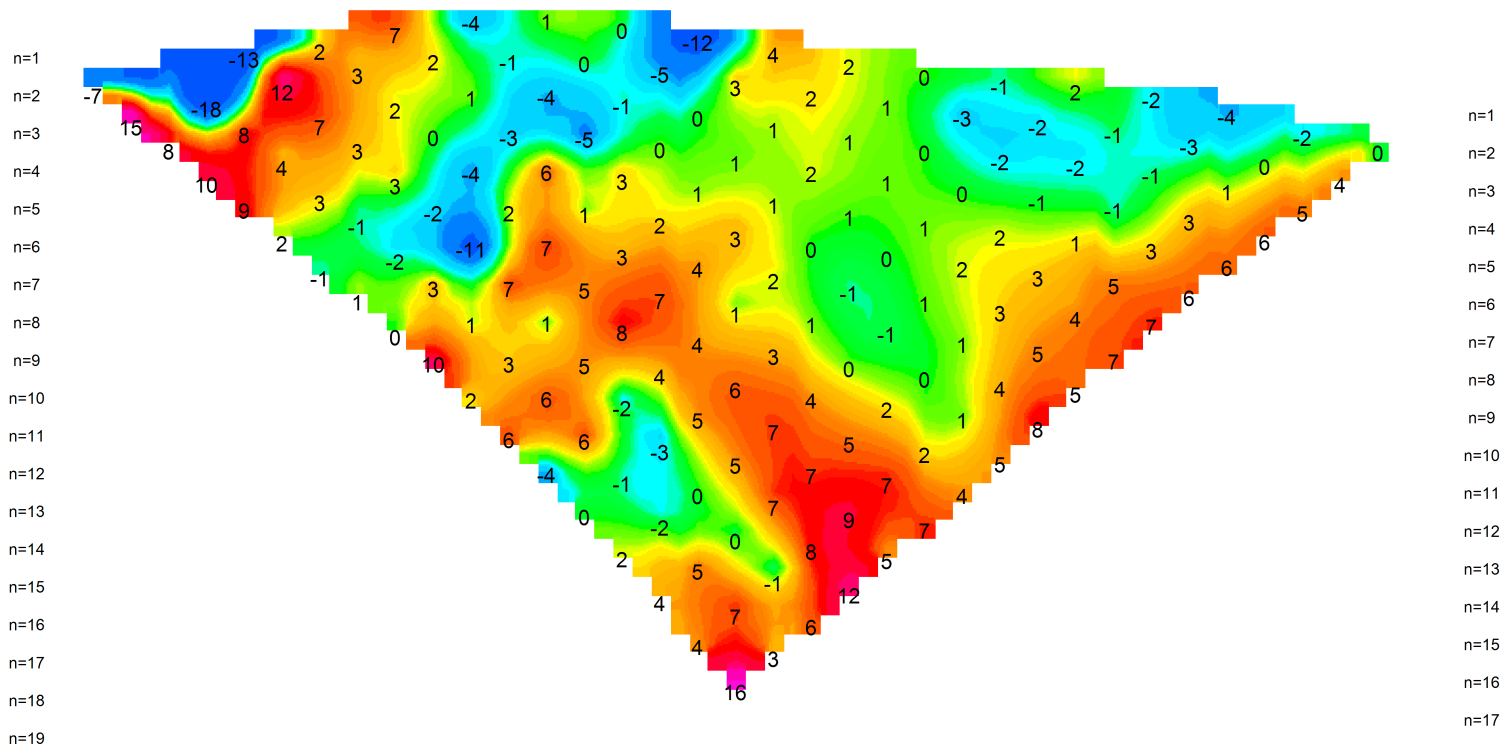
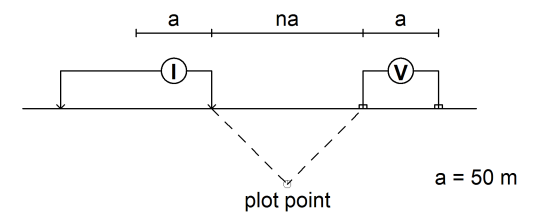


150 N 300 E 400 E 500 E 600 E 700 E 800 E 900 E 1000 E 1100 E



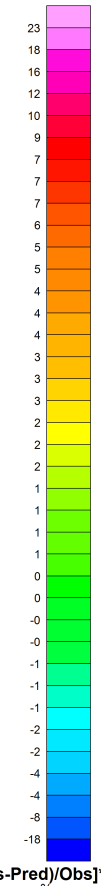
## Stacked Section Map Difference Calculation - 3D EPLDP

Modified Pole-Dipole Array



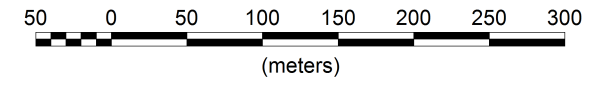
Stationary electrode at -100E (moving E).

Receiver: Iris ElrecPro  
 Transmitter: GDD Tx-II 3.6kW  
 Data File: NTR\_3dpldp.gdb  
 Dates Surveyed : July 12-13, 2012

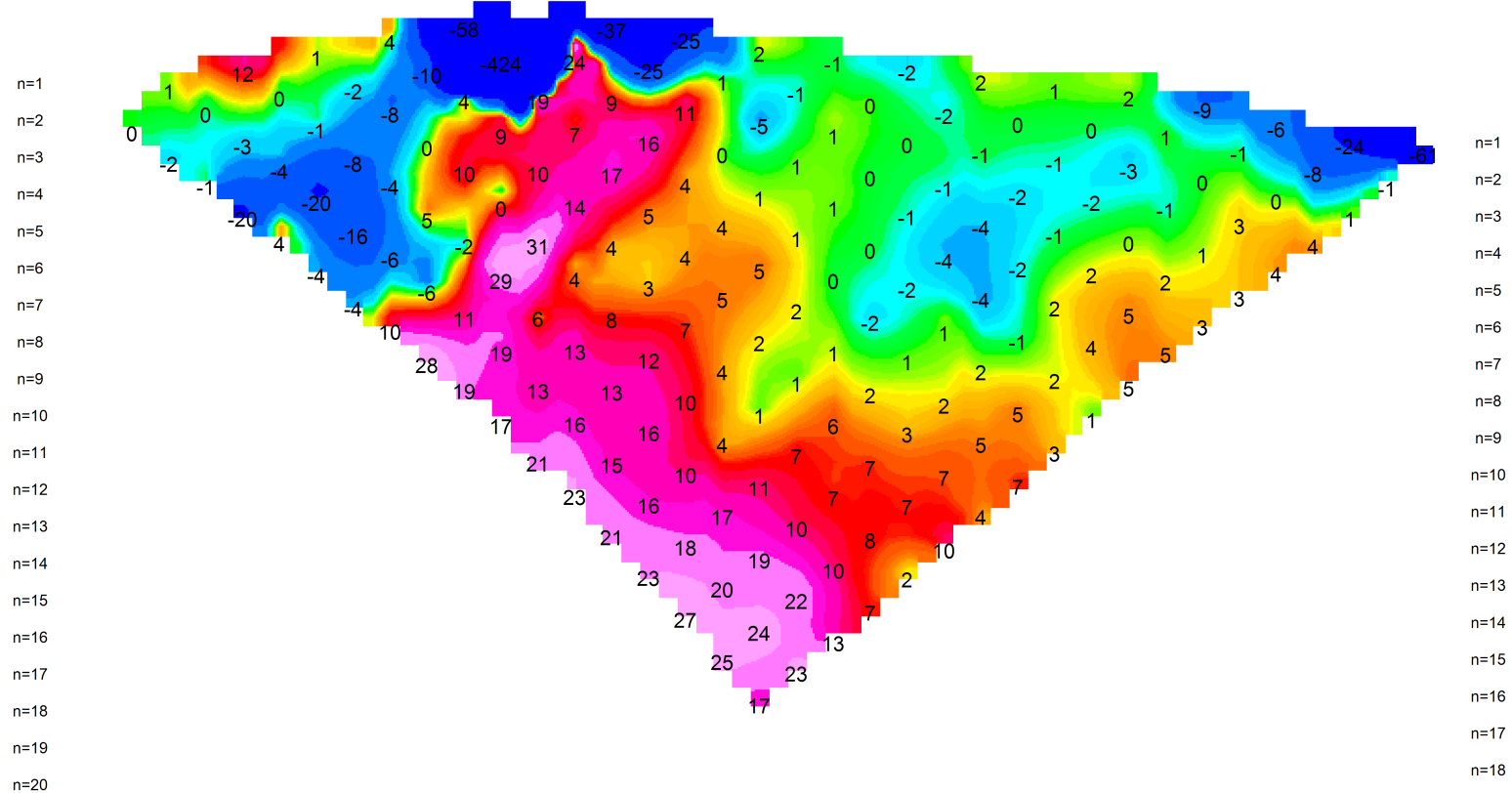


$[(\text{Obs}-\text{Pred})/\text{Obs}] * 100$   
%

Scale 1:5000



50 N 300 E 400 E 500 E 600 E 700 E 800 E 900 E 1000 E 1100 E



NORTHERN TIGER RESOURCES

INDUCED POLARIZATION SURVEY  
 DEL GRID  
 Difference Calculation - 3D EPLDP IP

Mining District: Whitehorse  
 Date: August 12, 2012

NTS: 115L/07  
 Job: NTR-12538-YT

AURORA GEOSCIENCES LTD.