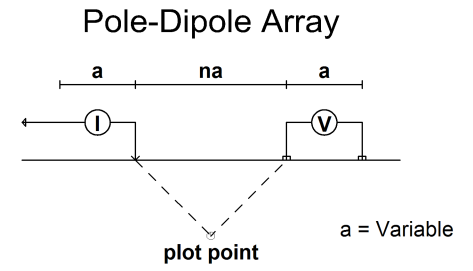


# 2014 South Plateau 3D DC/IP Survey STACKED SECTION



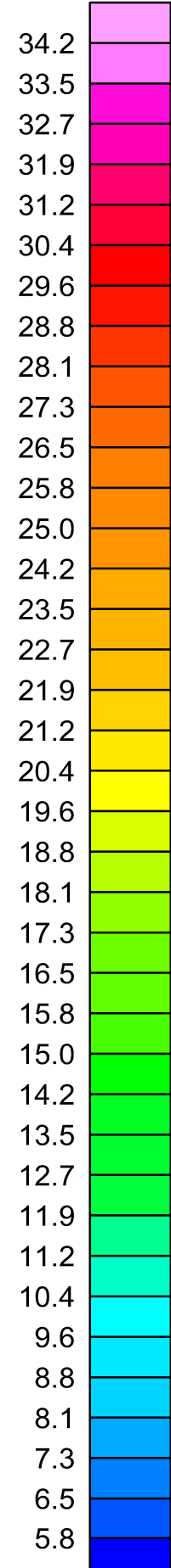
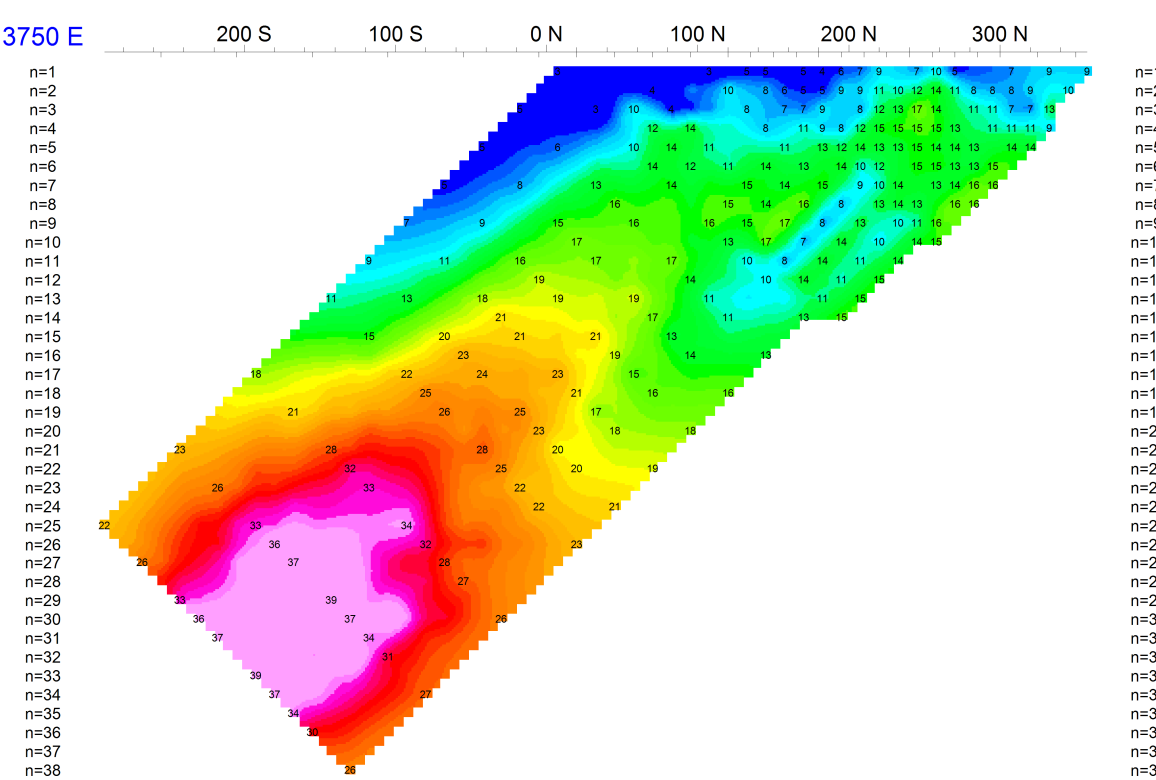
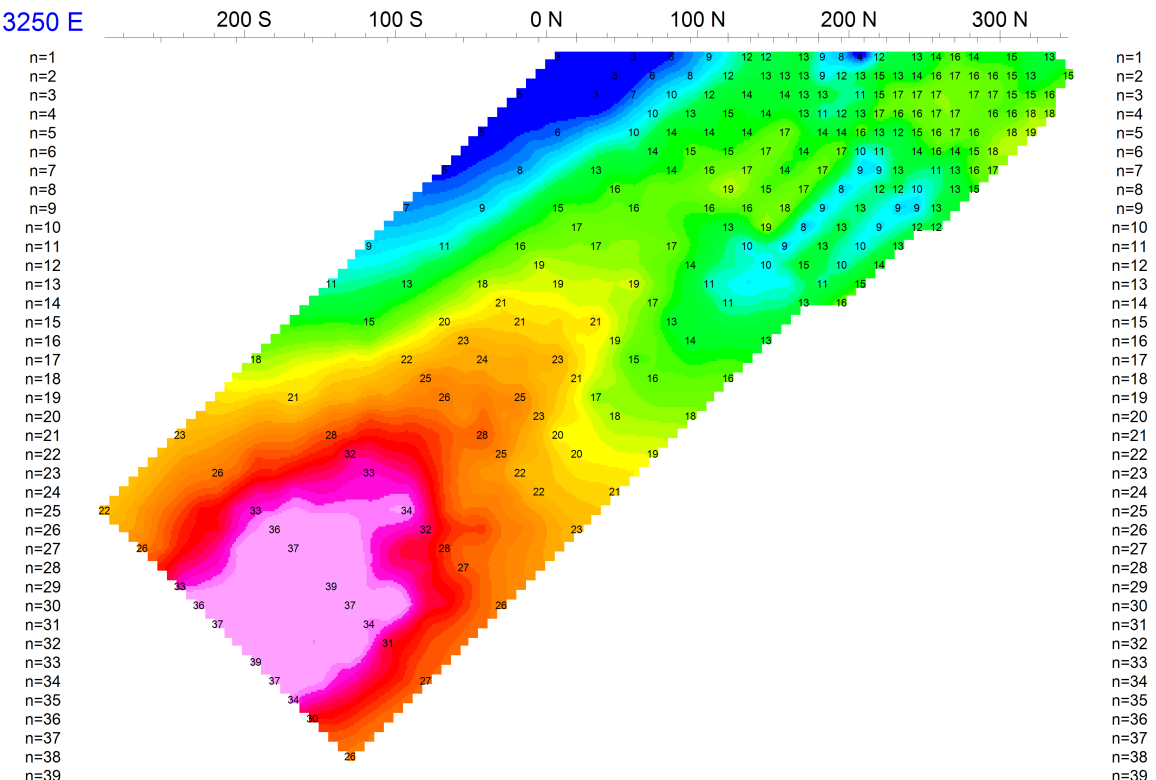
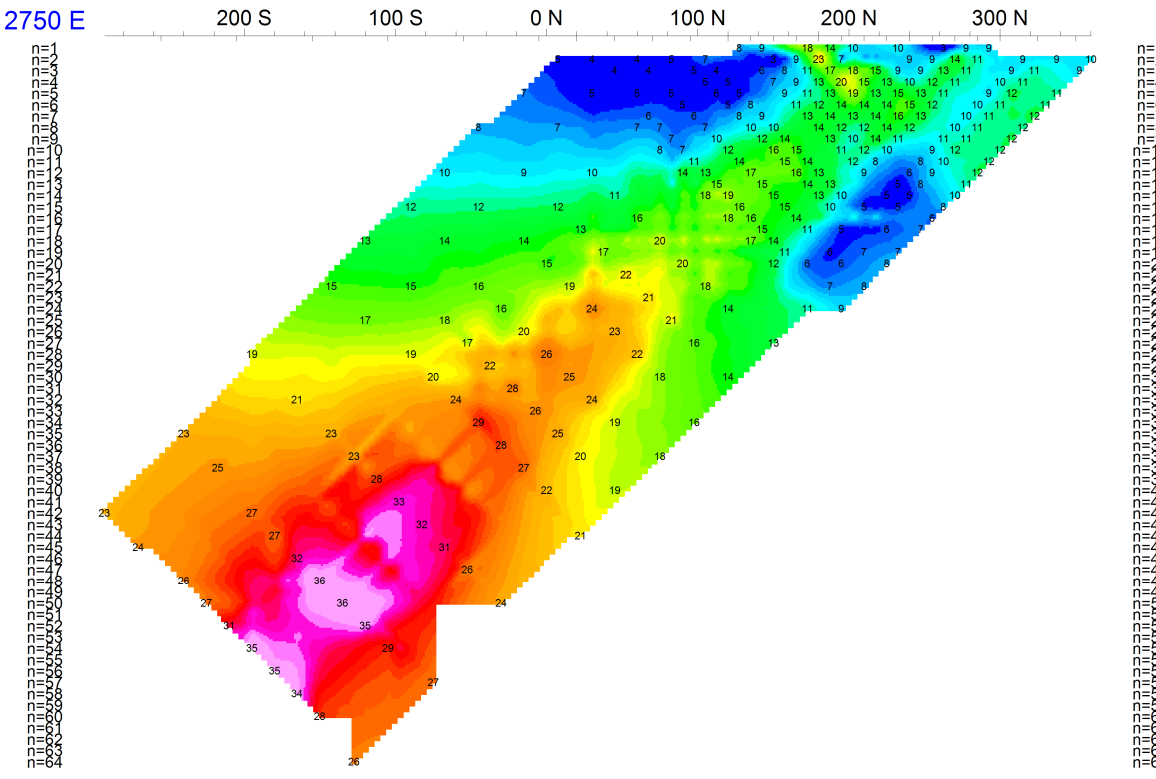
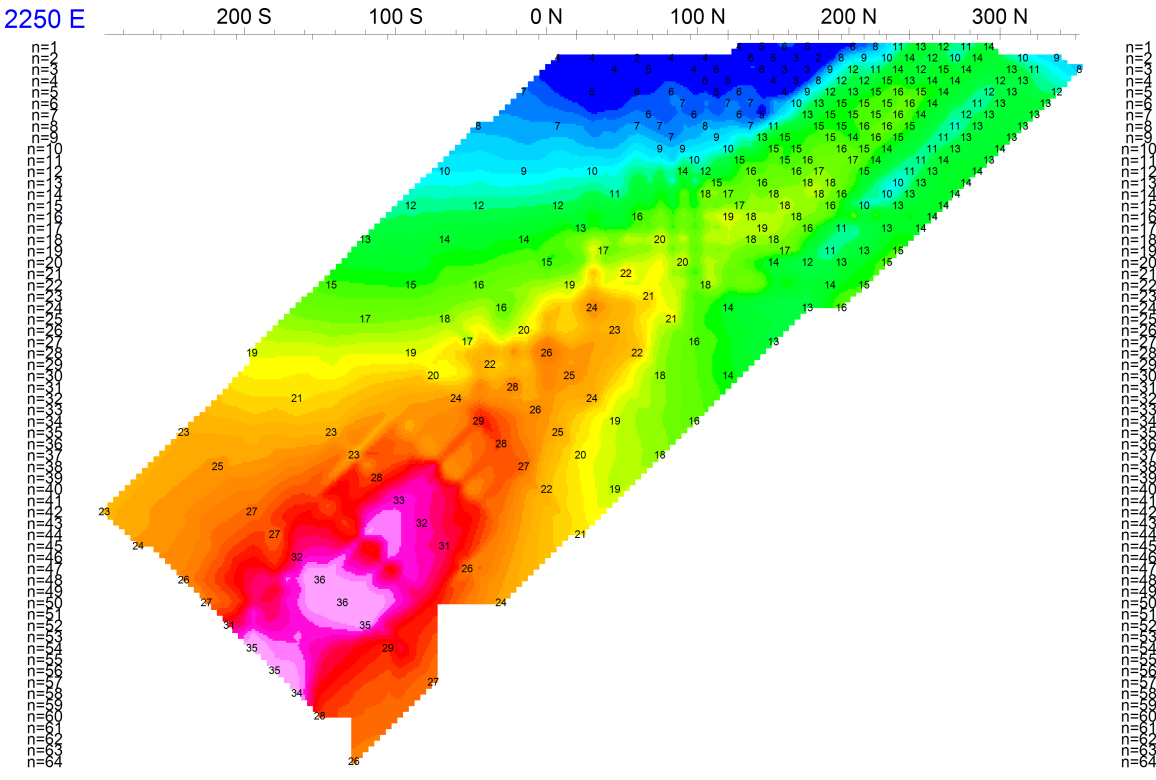
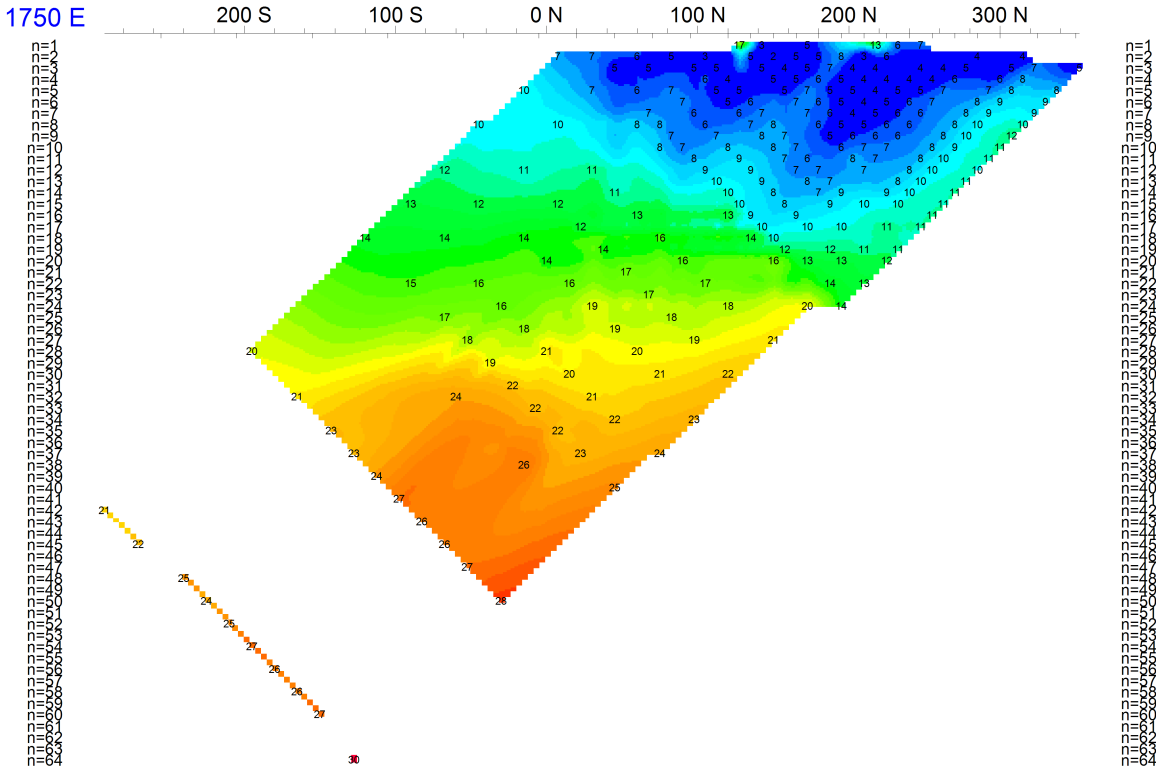
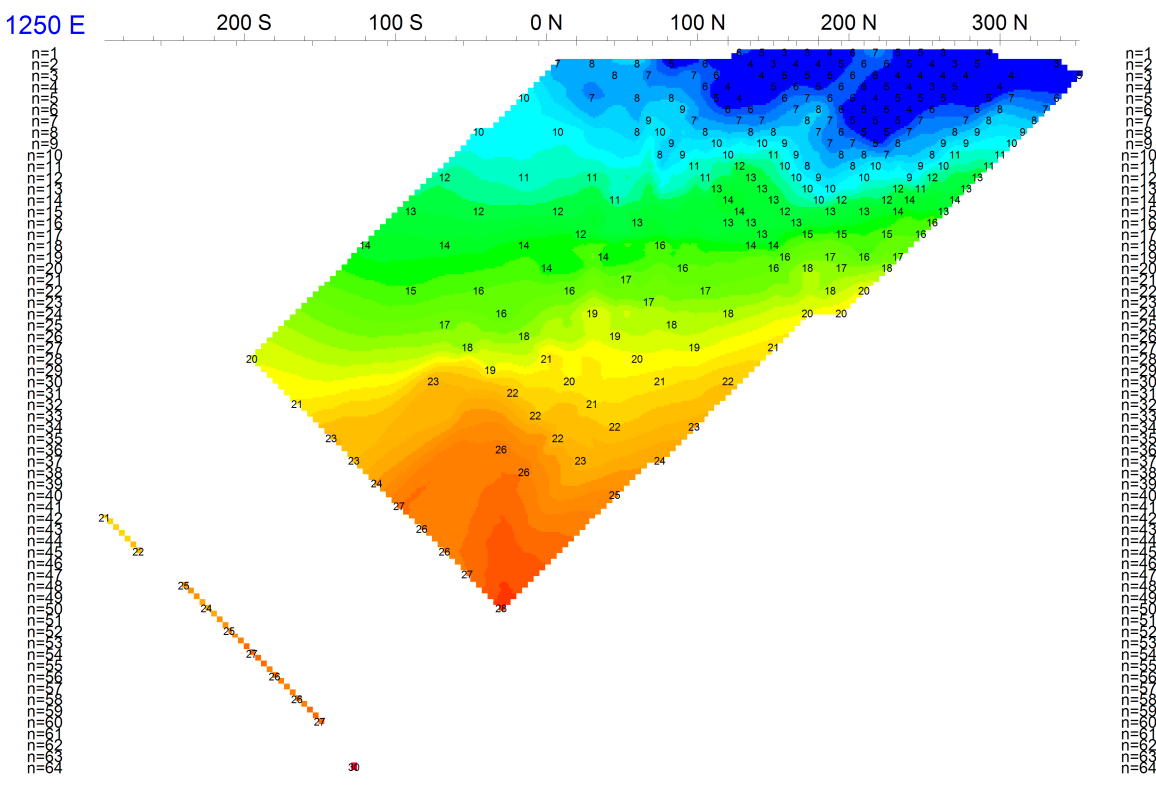
Stationary electrode at 581313E 7017095N

Receivers: Iris ElrecPro

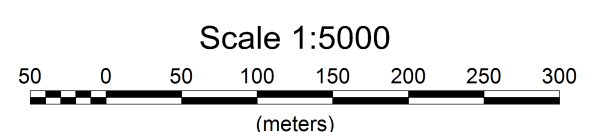
Transmitter: GDD Tx-II 3.6kW

Data File: SouthPlateau\_CoarseGrid\_IP\_PredvsObs.gdb

Dates Surveyed : July 30-August 4, 2014



**Apparent Chargeability**  
mV/V



GOLDSTRIKE RESOURCES LTD.

**2014 3D DC/IP SURVEY**  
**Stacked Section Plots - TX south of RX**  
**Predicted Apparent Chargeability**

Date: November 12, 2014

Job#: GSR-14541-YT

**AURORA GEOSCIENCES LTD.**